

PAPER SIZE: A1 23.4 x 33.1 (994 x 841) • PLOT DATE & TIME: 2018-10-21 22:24:47 • READ DRAWING ACCORDINGLY.

TITRE DU PROJET  
PROJECT TITLE

ÉDIFICE ET ÉTAGE  
BUILDING AND FLOOR

CONÇU PAR  
DESIGNED BY  
NO. DU PROJET  
PROJECT No.

# KELOWNA CONSOLIDATED 471

## #

QUEENSWAY  
KELOWNA, BC

Designer Name  
**DSR18-0006**

**F2** | New Furniture  
**F4** | New Screens  
**F4a** | New Screen power

LES ENTREPRENEURS DOIVENT VÉRIFIER TOUTES LES  
DIMENSIONS ET CONDITIONS EXISTANTES DE  
L'EMPLACEMENT ET DE RAPPORTER TOUT ANOMALIES AU  
GESTIONNAIRES DU PROJECT.  
NE PAS MESURER SUR LES DESSINS.  
CONTRACTORS TO VERIFY ALL DIMENSIONS &  
CONDITIONS ON SITE AND IMMEDIATELY NOTIFY THE  
PROJECT MANAGER OF ALL DISCREPANCIES.  
DO NOT SCALE DRAWINGS.

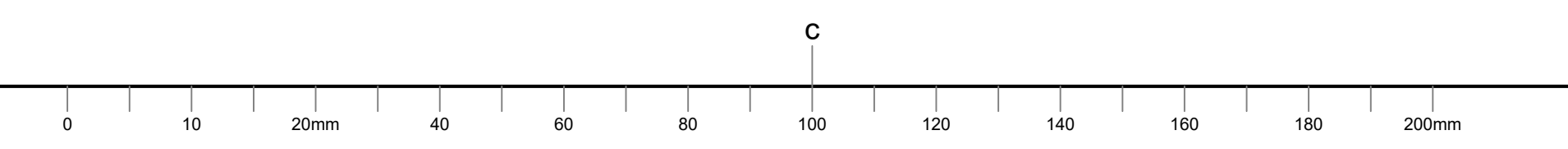
No.	description	date
99	REVISION DESCRIPTION	yyyy/mm/dd
4	REVISION DESCRIPTION	yyyy/mm/dd
3	REVISION DESCRIPTION	yyyy/mm/dd
2	REVISION DESCRIPTION	yyyy/mm/dd
1	REVISION DESCRIPTION	yyyy/mm/dd

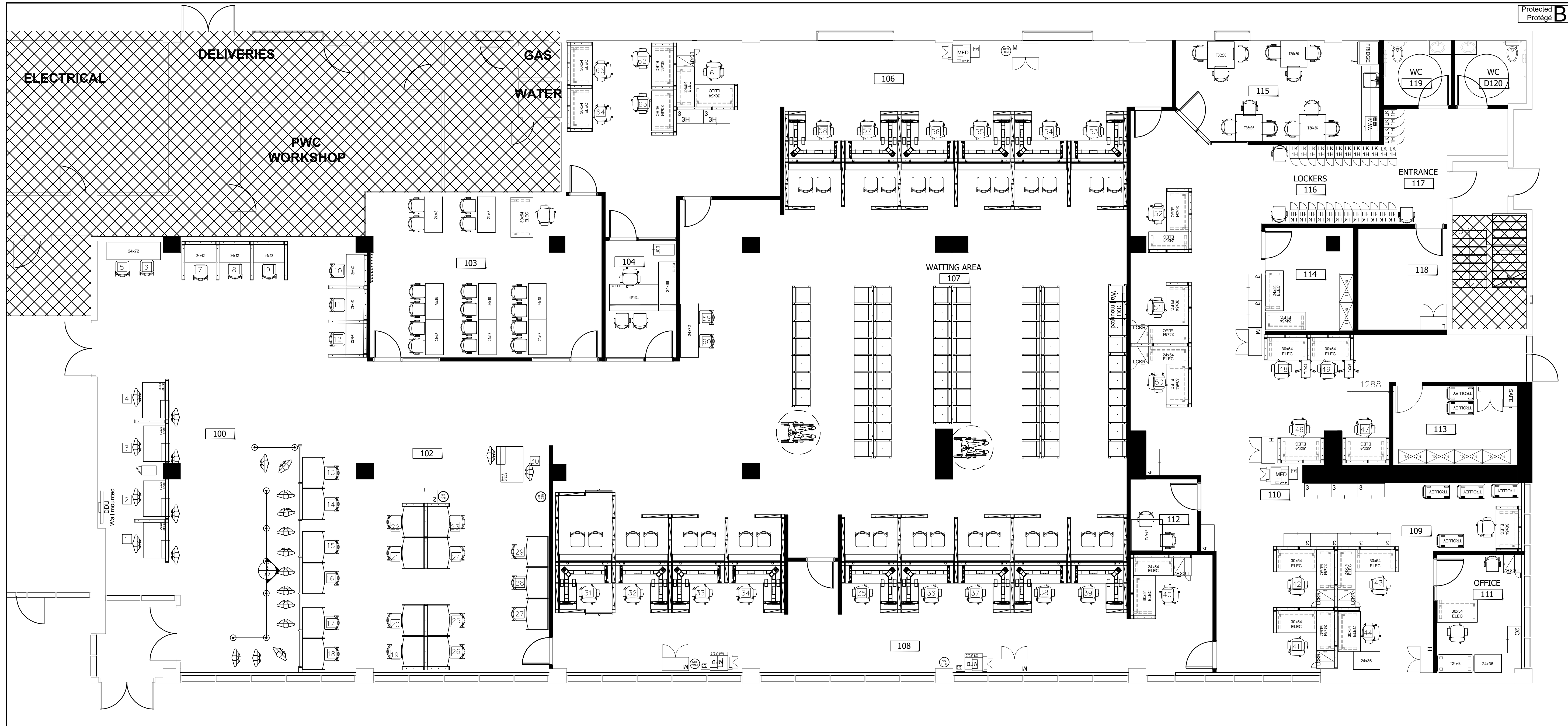
A	A detail no. / no. de détail
B	B location drawing no. / sur dessin no.

Project Projet  
**KELOWNA  
CONSOLIDATED**  
471 #  
QUEENSWAY  
KELOWNA, BC

Drawing Dessin  
**DRAWING TITLE**

Designed By	Conçu par
Date	DESIGNED DATE DES (yyyy/mm/dd)
Reviewed By	REVIEWER_NAME Examiné par
Date	DATE_REV (yyyy/mm/dd)
Approved by CFBO	Approuvé par DGAPP
Date	CFBO_APPROVED DATE_CFBO (yyyy/mm/dd)
Approved by ISB	Approuvé par DGS1
Date	ISB_APPROVED DATE_ISB (yyyy/mm/dd)
Client Approval	Approbation du client
Date	CLIENT_NAME DATE_CLIENT (yyyy/mm/dd)
Project no.	No. du projet
Date	<b>DSR18-0006</b> (yyyy/mm/dd)
Drawing no.	No. du dessin
<b>COVER</b>	





Protected  
Protégé **B**



Blans Immobiliers, Gestion du Changement et Services Régionaux (BIGCSR) / Real Property, Change Management and Regional Services (RPCMRS)

Key Plan / Plan Clé

LES ENTREPRENEURS DOIVENT VÉRIFIER TOUTES LES DIMENSIONS ET CONDITION EXISTANTES DE L'EMPLACEMENT ET DE RAPPORTER TOUT ANOMALIES AU GESTIONNAIRES DU PROJECT. NE PAS MESURER SUR LES DESSINS.

CONTRACTORS TO VERIFY ALL DIMENSIONS & CONDITIONS ON SITE AND IMMEDIATELY NOTIFY THE PROJECT MANAGER OF ALL DISCREPANCIES. DO NOT SCALE DRAWINGS.

99	REVISION DESCRIPTION	yyyy/mm/dd
4	REVISION DESCRIPTION	yyyy/mm/dd
3	REVISION DESCRIPTION	yyyy/mm/dd
2	REVISION DESCRIPTION	yyyy/mm/dd
1	REVISION DESCRIPTION	yyyy/mm/dd
No.	description	date

**A** A detail no. / no. de détail  
**B** B location drawing no. / sur dessin no.

PANEL SYSTEM FINISHES & LEGEND	
FRONT END SURFACE FINISH:	WHITE
EDGE TRIM STYLE:	SLIM
EDGE TRIM FINISH:	CHARCOAL
VERTICAL FINISH COLOUR:	CHARCOAL
ACCESSORIES AND SUPPORTS:	CHARCOAL
STORAGE FRONT DOOR:	CHARCOAL
FREESTANDING STORAGE:	CHARCOAL

OTHER FURNITURE FINISHES & LEGEND	
BACK END HEIGHT ADJUSTABLE SURFACE FINISH:	MAPLE BASE: SILVER
COLLABORATIVE TABLES:	SPEC-MAPLE BASE: SILVER
TRAINING TABLES:	SPEC-MAPLE BASE: SILVER
SIDE CHAIRS:	VERY-CHARCOAL TR-FJ BASE: BLACK
WELCOME/ASSISTANCE POINT:	BRC-MAPLE BASE: CHARCOAL
STEELCASE TASK CHAIRS:	6205 BLACK
ARCONAS BENCH SEATING:	SETZ-CLOUD SILVER
MONITOR ARMS:	ISE-SAVOY SINGLE ARM SILVER
TASK LIGHTING:	FUNDAMENTAL
CPU HOLDERS:	ISE TRACK MOUNT

SIGNAGE LEGEND			
E22	EXTERIOR PRIMARY SIGNAGE (PSPC)	F26	WORKSTATION NUMBERS
F7	NO EATING OR DRINKING	F27	FIRST AID SIGN
F9	BARRIER FREE SIGN	F28	ROOM NUMBERS
F12	GENDER NEUTRAL SIGN	F29	WORKSTATION NAME HOLDER
F19	OFFICIAL LANGUAGE SYMBOLS	F31	RESTRICTED AREA SIGN
F6	RESPECTFUL ENVIRONMENT SIGN	F32	ESCORT AND ID VISITOR SIGN
F23	RECYCLING SIGN	HS	HAND SANITIZER STATION
F24	PHOTOCOPIER/ PRINTER		

**NOTES FOR SYSTEM FURNITURE SUPPLIER/INSTALLER**

- REPAIR ANY DAMAGE CAUSED TO CEILING GRID OR CEILING TILES DURING INSTALLATION.
- SEE POWER AND COMMUNICATION PLAN FOR LOCATION OF VOICE, DATA, ELECTRICAL OUTLETS AND POWER POLES FOR SCREENS 1/A3.
- REMOVE FABRIC ELEMENTS AND OVERHEAD STORAGE MODULES, ON ONE SIDE ONLY, WHERE POWER POLES ENTER THE SCREEN TO ALLOW ACCESS TO ELECTRICIANS AND CABLING TECHNICIANS. REINSTALL ONCE WORK HAS BEEN COMPLETED.
- ADJUST POWER POLE LOCATION AS REQUIRED DEPENDING ON LOCATION OF LIGHTING FIXTURES. ESDC PROJECT MANAGER APPROVE FINAL LOCATION.
- CHECK ALL MEASUREMENTS BEFORE INSTALLING FURNITURE TO ENSURE PROPER SIZING.
- ADJUSTABLE HEIGHT DESKING SURFACES ARE TO BE INSTALLED ACROSS THE OFFICE.
- DUST ALL FURNITURE FOLLOWING INSTALLATION AND REMOVE ANY DEBRIS.

**DRAWING-SPECIFIC NOTES**

- DIGITAL DISPLAY UNIT. SPECIFIC HEIGHT TO BE CONFIRMED. BACKING AND CONDUITS REQUIRED.
- VIDEOCONFERENCING UNIT. SPECIFIC HEIGHT TO BE CONFIRMED. BACKING AND CONDUITS REQUIRED.
- CEILING MICROPHONES AND SPEAKERS.
- CEILING SPEAKERS.
- HDMI CONNECTION.

1 PlanTitle  
SCALE 1:50



Project / Projet

**KELOWNA CONSOLIDATED**  
471 # QUEENSWAY  
KELOWNA, BC

Drawing / Dessin

**NEW FURNITURE**

Designed By / Conçu par  
DESIGNED DATE\_DES (yyyy/mm/dd)

Reviewed By / Examiné par  
REVIEWER\_NAME DATE\_REV (yyyy/mm/dd)

Approved by CFBO / Approuvé par DGAPP  
DATE\_CFBO (yyyy/mm/dd)

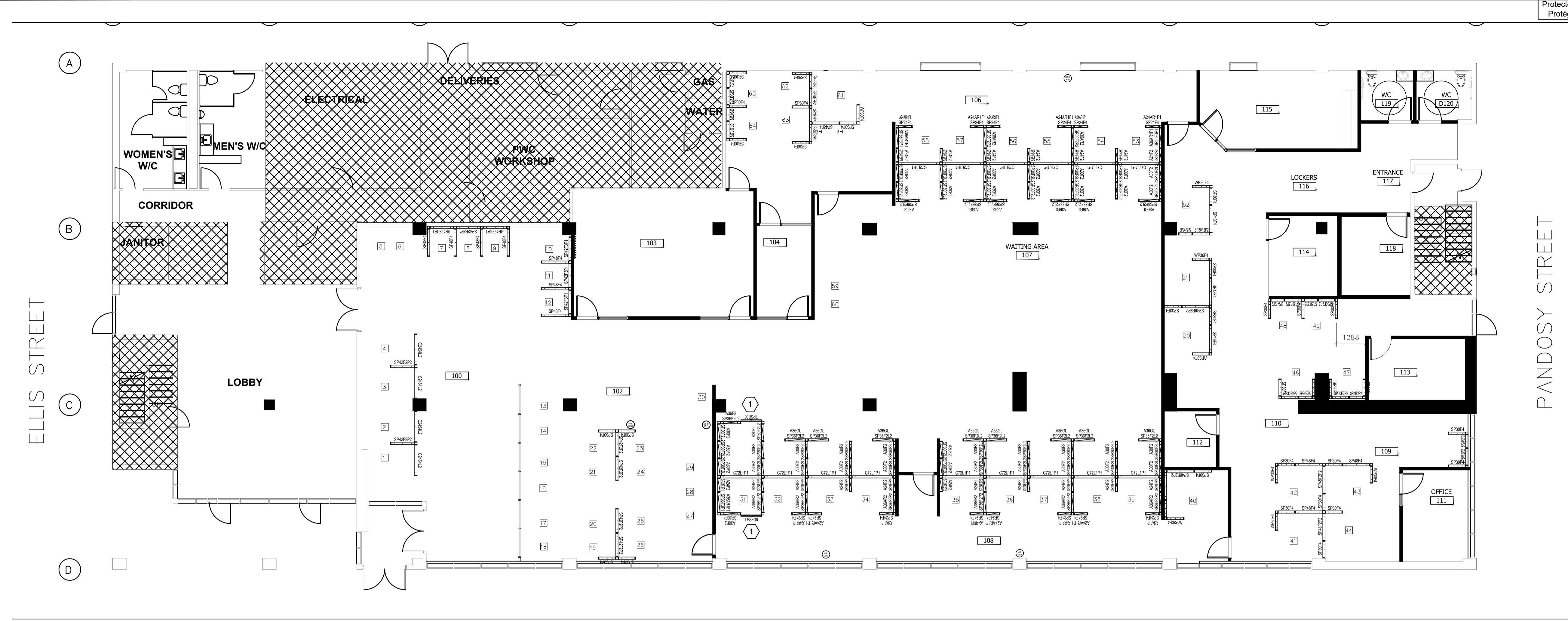
Approved by ISB / Approuvé par DGSI  
ISE APPROVED DATE\_ISB (yyyy/mm/dd)

Client Approval / Approbation du client  
CLIENT\_NAME DATE\_CLIENT (yyyy/mm/dd)

Project no. / No. du projet  
**DSR18-0006**

Drawing no. / No. du dessin  
**F2**

PAPER SIZE: ARCH D 24 x 36 (610 x 914) • PLOT DATE & TIME: 2018-11-20 09:44:34 • READ DRAWING ACCORDINGLY.



LES ENTREPRENEURS DOIVENT VÉRIFIER TOUTES LES DIMENSIONS ET CONDITIONS EXISTANTES DE L'EMPLACEMENT ET DE RAPPORTER TOUT ANOMALIES AU GESTIONNAIRES DU PROJET. NE PAS MESURER SUR LES DESSINS.  
 CONTRACTORS TO VERIFY ALL DIMENSIONS & CONDITIONS ON SITE AND IMMEDIATELY NOTIFY THE PROJECT MANAGER OF ALL DISCREPANCIES. DO NOT SCALE DRAWINGS.

**DRAWING NOTE**  
 1 FROSTED FILM ON GLASS DOOR

99	REVISION DESCRIPTION	yyyy/mm/dd
4	REVISION DESCRIPTION	yyyy/mm/dd
3	REVISION DESCRIPTION	yyyy/mm/dd
2	REVISION DESCRIPTION	yyyy/mm/dd
1	REVISION DESCRIPTION	yyyy/mm/dd
No.	description	date

A A detail no. / no. de détail  
 B B location drawing no. / sur dessin no.

Project / Projet  
**KELOWNA CONSOLIDATED**  
 471 # QUEENSWAY  
 KELOWNA, BC

Drawing / Dessin  
 #####

Designed By / Conçu par	
Date / DATE_DES	(yyyy/mm/dd)
Reviewed By / Examiné par	
Date / REVIEWER_NAME / DATE_REV	(yyyy/mm/dd)
Approved by CFBO / Approuvé par DGAPP	
Date / CFBO_APPROVED / DATE_CFBO	(yyyy/mm/dd)
Approved by ISB / Approuvé par DGSI	
Date / ISB_APPROVED / DATE_ISB	(yyyy/mm/dd)
Client Approval / Approbation du client	
Date / CLIENT_NAME / DATE_CLIENT	(yyyy/mm/dd)
Project no. / No. du projet	DSR18-0006
Date / (yyyy/mm/dd)	
Drawing no. / No. du dessin	F4

**PANEL MATRIX**  
 WORKSURFACE PRIVACY ADD-ON / PANNEAUX ADDITIONNELS POUR INTIMITÉ À LA SURFACE DE TRAVAIL (42" - 48")  
 CUSTOM / SUR MESURE (24" h)

WPXXF4		CXXP1L1		CXXL2	
Upper element 1 / Élément supérieur	Upper element 2 / Élément supérieur	Lower element 1 / Élément inférieur	Lower element 2 / Élément inférieur	Lower element 1 / Élément inférieur	Lower element 2 / Élément inférieur
Fabric / Tissu	Fabric / Tissu	Laminate / Laminé	Fabric + power and data / Tissu + prises électriques et data	Laminate / Laminé	Laminate / Laminé

SPXXF4		SPXXF2P2		SPXXF3P1		SPXXF2L2	
Upper element 1 / Élément supérieur	Upper element 2 / Élément supérieur	Upper element 1 / Élément supérieur	Upper element 2 / Élément supérieur	Upper element 1 / Élément supérieur	Upper element 2 / Élément supérieur	Upper element 1 / Élément supérieur	Upper element 2 / Élément supérieur
Fabric / Tissu	Fabric / Tissu	Fabric / Tissu	Fabric / Tissu	Fabric / Tissu	Fabric / Tissu	Fabric / Tissu	Fabric / Tissu
Lower element 1 / Élément inférieur	Lower element 2 / Élément inférieur	Lower element 1 / Élément inférieur	Lower element 2 / Élément inférieur	Lower element 1 / Élément inférieur	Lower element 2 / Élément inférieur	Lower element 1 / Élément inférieur	Lower element 2 / Élément inférieur
Fabric / Tissu	Fabric / Tissu	Fabric + power and data / Tissu + prises électriques et data	Fabric + power and data / Tissu + prises électriques et data	Fabric / Tissu	Fabric + power and data / Tissu + prises électriques et data	Laminate / Laminé	Laminate / Laminé

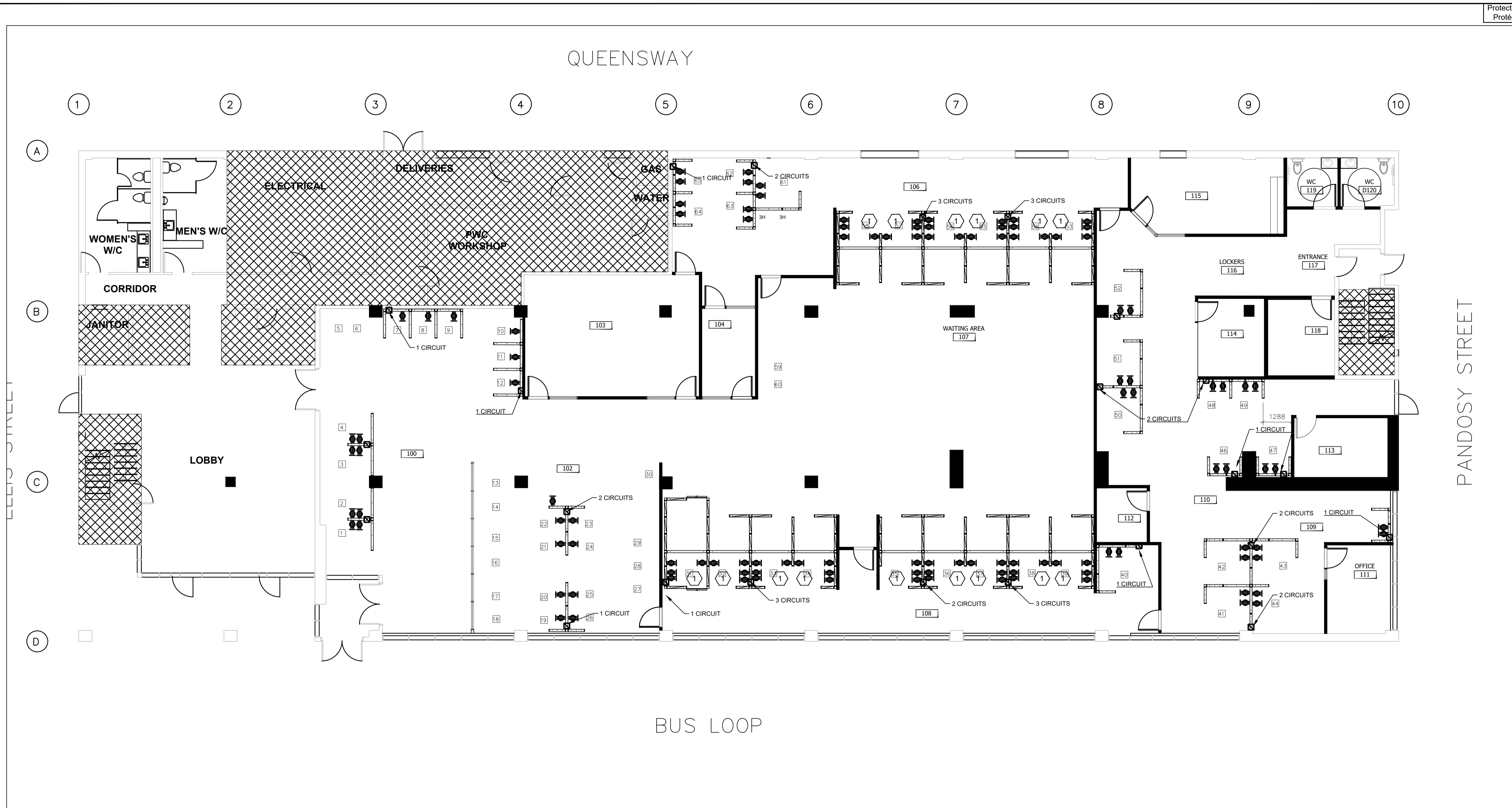
**INTEGRATED ADD-ON** (To be integrated with SEATED PRIVACY HEIGHT to achieve 64" to 66" high)  
 PANNEAUX ADDITIONNELS POUR INTIMITÉ (À être intégrés aux PANNEAUX ADDITIONNELS POUR INTIMITÉ EN POSITION ASSISE pour obtenir une hauteur de 64" à 66" de haut)

AXXF2		AXXAR1F1		AXXAR2		AXXGL	
Add-on 1 / Ajout 1	Add-on 2 / Ajout 2	Add-on 1 / Ajout 1	Add-on 2 / Ajout 2	Add-on 1 / Ajout 1	Add-on 2 / Ajout 2	Add-on 1 / Ajout 1	Add-on 2 / Ajout 2
Fabric / Tissu	Fabric / Tissu	Accessory rail / Rail accessoire	Fabric / Tissu	Accessory rail / Rail accessoire	Accessory rail / Rail accessoire	Frosted / Givré	Frosted / Givré

1 New Panel Plan (For reference only)  
 SCALE 1:100

PAPER SIZE: A1 23.4 x 33.1 (994 x 841) • PLOT DATE & TIME: 2018-10-21 22:24:47 • READ DRAWING ACCORDINGLY.





LES ENTREPRENEURS DOIVENT VÉRIFIER TOUTES LES DIMENSIONS ET CONDITIONS EXISTANTES DE L'EMPLACEMENT ET DE RAPPORTER TOUT ANOMALIES AU GESTIONNAIRES DU PROJET. NE PAS MESURER SUR LES DESSINS.  
CONTRACTORS TO VERIFY ALL DIMENSIONS & CONDITIONS ON SITE AND IMMEDIATELY NOTIFY THE PROJECT MANAGER OF ALL DISCREPANCIES. DO NOT SCALE DRAWINGS.

No.	description	date
99	REVISION DESCRIPTION	yyyy/mm/dd
4	REVISION DESCRIPTION	yyyy/mm/dd
3	REVISION DESCRIPTION	yyyy/mm/dd
2	REVISION DESCRIPTION	yyyy/mm/dd
1	REVISION DESCRIPTION	yyyy/mm/dd

A A detail no. / no. de détail  
B B location drawing no. / sur dessin no.

Project / Projet  
**KELOWNA CONSOLIDATED**  
471 # QUEENSWAY  
KELOWNA, BC

Drawing / Dessin

#####

Designed By / Conçu par	
Date / DATE_DES	(yyyy/mm/dd)
Reviewed By / Examiné par	
Date / DATE_REV	(yyyy/mm/dd)
Approved by CFBO / Approuvé par DGAPP	
Date / DATE_CFBO	(yyyy/mm/dd)
Approved by ISB / Approuvé par DGSJ	
Date / DATE_ISB	(yyyy/mm/dd)
Client Approval / Approbation du client	
Date / DATE_CLIENT	(yyyy/mm/dd)
Project no. / No. du projet	
Date / DATE	(yyyy/mm/dd)
Drawing no. / No. du dessin	

DSR18-0006

F4a

1 New Panel Power Distribution Plan (For reference only)  
SCALE 1:100

POWER & COMMUNICATIONS IN SYSTEMS FURNITURE	
☑	SYSTEMS FURNITURE TOP-FEED SUPPLIED & INSTALLED BY OTHERS. TO BE HOOKED UP BY ELECTRICAL CONTRACTOR. REFER TO M&E DRAWINGS FOR SPECIFICATIONS.
⬆	SYSTEMS FURNITURE BASE FEED SUPPLIED & INSTALLED BY OTHERS. TO BE HOOKED UP BY ELECTRICAL CONTRACTOR. REFER TO M&E DRAWINGS FOR SPECIFICATIONS.
⚡	SYSTEMS FURNITURE DUPLEX OUTLET SUPPLIED AND INSTALLED BY OTHERS. REFER TO MANUFACTURER'S DRAWINGS FOR SPECIFICATIONS.
⚡	COMBINED TELECOMMUNICATION & DATA PLUG-IN JACKS SUPPLIED AND INSTALLED BY SSC. SEE MANUFACTURER FOR MOUNTING FACE PLATE TO FURNITURE DATA KNOCKOUT.
⚡	DATA-ONLY PLUG-IN JACK SUPPLIED AND INSTALLED BY SSC. SEE MANUFACTURER FOR MOUNTING FACE PLATE TO FURNITURE DATA KNOCKOUT.
⚡	DEBIT MACHINE PLUG-IN JACK SUPPLIED AND INSTALLED BY SSC. SEE MANUFACTURER FOR MOUNTING FACE PLATE TO FURNITURE DATA KNOCKOUT.
⚡	BIOMETRIC SOLUTION PLUG-IN JACK SUPPLIED AND INSTALLED BY SSC. SEE MANUFACTURER FOR MOUNTING FACE PLATE TO FURNITURE DATA KNOCKOUT.

NOTE DU FURNITURE SUPPLIER:  
- DUPLEX # IN WORKSTATION TO BE ALIKE.  
- 3 WORKSTATIONS PER CIRCUIT UNLESS OTHERWISE IDENTIFIED.  
- DEDICATE 1 CIRCUIT FOR PRINTERS.

DRAWING - SPECIFIC NOTES  
1 1 WORKSTATION PER CIRCUIT

1 DRAWING - SPECIFIC NOTES  
DRAWING NOTE

PAPER SIZE: A1 23.4 x 33.1 (694 x 841) • PLOT DATE & TIME: 2018-10-21 22:24:47 • READ DRAWING ACCORDINGLY.