
AMENDMENT NO. 001

This amendment is raised to answer Bidder's questions.

QUESTIONS AND ANSWERS

Question 1:

ANNEX "B" – SITE INFORMATION identifies site location as Shirley's Bay, 3701 Carling Ave, Ottawa, K2K 2Y7 Bldg 106. Please provide the longitude and latitude for this location.

Answer 1:

Bldg 106	45°21'00.4"N 75°53'21.8"W
Bldg 75	45°20'50.5"N 75°53'15"W

Question 2:

ANNEX "B" – SITE INFORMATION. Is there Government furnished fiber available for us to use between building 106 and LAB 2? If not, is there conduit available between these locations for us to use?

Answer 2:

There is Multi-Mode Fibre available between Bldg 106 and Bldg 75 room 168

Question 3:

7. DELIVERABLES

- Deliver quantity 2, 20Mbps "Mission Critical" EvPL links, details are in Annex B. Links must be provisioned in an Active-Stand-by mode. The links must be homed to different hardware at the serving Point of Presence/Central Office.
- Provide two independent CPE devices at each location to terminate links.
- Install the necessary equipment required to establish and maintain connectivity that will provide a high availability SLA of 99.99% uptime/availability.

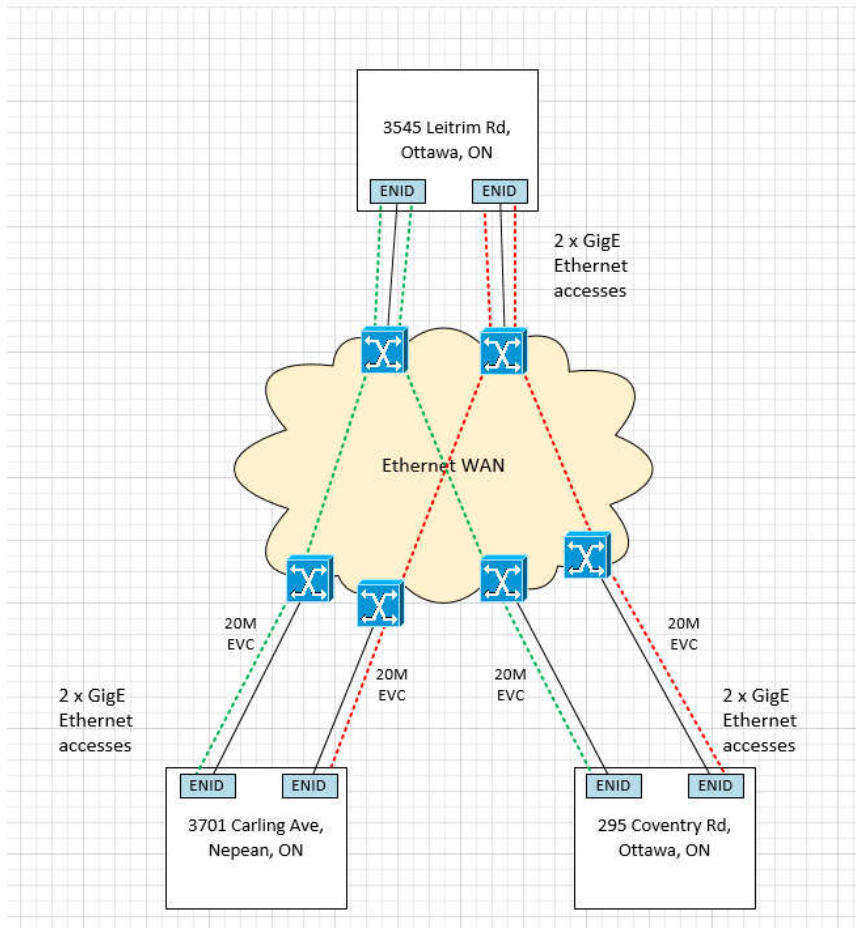
Based on the description in the RFP our understanding is that DND is requesting the following:

- Redundant point-to-point 20M EVPL connections from Leitrim to Coventry
No, not at this time. Only if 99.999% SLA is asked for in the future. Add Move Changes clause
- Redundant point-to-point 20M EVPL connections from Leitrim to Shirley's Bay
No, not at this time. Only if 99.999% SLA is asked for in the future. Add Move Changes clause
- Redundant GigE Ethernet access circuits at all three sites. At a minimum, you require that the two circuits in each HA pair of circuits must home to diverse Ethernet edge switches in the provider's network.
Only in Leitrim, Only if 99.999% SLA is asked for in the future. Add Move Changes clause

- We assume two GigE access circuits only will be delivered to Leitrim and therefore each of these accesses will be a point-to-multipoint connection as shown in the diagram below.
Correct. For Future use, Vlan tag separation between the services. Add Move Changes clause
- At each site each pair of Ethernet accesses will be configured as an active/standby HA pair
No, not at this time. Only if 99.999% SLA is asked for in the future.
- Each access will terminate on a separate CPE device supplied by the service provider.
In Leitrim at the moment, possible in the future. Add Move Changes clause

Questions

1. Please confirm this is correct or clarify the requirements.
See above responses in Red.
2. Regarding the active/standby requirement, will failover be handled on DND devices or do require layer-2 failover functionality to be provided by the service provider?
If 99.999% SLA is asked for in the future, DND eqpt will handle the Layer 2 Failover functionality.



Answer 3:

See above for DND's comments and answers in Red for Question 3 answers.

Question 4:

If possible could DND provide building, floor and room number at this time?

Answer 4:

Shirley's Bay Bldg 106 or Bldg 75 room 168
CFS Leitrim Bldg 250 room 1139 or 1063

Question 5:

Would the Crown consider a two week extension to the middle of June?

Answer 5:

Yes, an extension has been granted until 18 June 2021 for bid submission.

Question 6:

PART 1 - GENERAL INFORMATION 1.1 Security Requirements 1. At the date of bid closing, the following conditions must be met: (a) the Bidder must hold a valid organization security clearance as indicated in Part 6 - Resulting Contract Clauses; (b) the Bidder's proposed individuals requiring access to classified or protected information, assets or sensitive work sites must meet the security requirements as indicated in Part 6 - Resulting Contract Clauses; (c) the Bidder must provide the name of all individuals who will require access to classified or protected information, assets or sensitive work sites.

Please identify specific information that is DND deems "classified or protected information" in this RFQ?

Answer 6:

As per the SRCL Section 6a):

No access to PROTECTED and/or CLASSIFIED information or assets is required.