



RETURN BIDS TO:

RETOURNER LES SOUMISSIONS À:

Bid Receiving Public Works and Government
Services Canada/Réception des soumissions Travaux
publics et Services gouvernementaux Canada
See herein for bid submission
instructions/

Voir la présente pour les
instructions sur la présentation
d'une soumission

NA
British Columbia

**SOLICITATION AMENDMENT
MODIFICATION DE L'INVITATION**

The referenced document is hereby revised; unless otherwise
indicated, all other terms and conditions of the Solicitation
remain the same.

Ce document est par la présente révisé; sauf indication contraire,
les modalités de l'invitation demeurent les mêmes.

Comments - Commentaires

Vendor/Firm Name and Address
Raison sociale et adresse du
fournisseur/de l'entrepreneur

Issuing Office - Bureau de distribution
Public Works and Government Services Canada - Pacific
Region
401 - 1230 Government Street
Victoria, B. C.
V8W 3X4

Title - Sujet CCG - Tug and Barge Services	
Solicitation No. - N° de l'invitation F1705-210009/A	Amendment No. - N° modif. 001
Client Reference No. - N° de référence du client F1705-210009	Date 2021-05-19
GETS Reference No. - N° de référence de SEAG PW-\$XLV-594-8225	
File No. - N° de dossier XLV-1-44006 (594)	CCC No./N° CCC - FMS No./N° VME
Solicitation Closes - L'invitation prend fin at - à 02:00 PM Pacific Daylight Saving Time PDT on - le 2021-05-27 Heure Avancée du Pacifique HAP	
F.O.B. - F.A.B. Specified Herein - Précisé dans les présentes Plant-Usine: <input type="checkbox"/> Destination: <input type="checkbox"/> Other-Autre: <input checked="" type="checkbox"/>	
Address Enquiries to: - Adresser toutes questions à: Birtwistle, Tracy	Buyer Id - Id de l'acheteur xlv594
Telephone No. - N° de téléphone (236) 464-0497 ()	FAX No. - N° de FAX () -
Destination - of Goods, Services, and Construction: Destination - des biens, services et construction:	

Instructions: See Herein

Instructions: Voir aux présentes

Delivery Required - Livraison exigée	Delivery Offered - Livraison proposée
Vendor/Firm Name and Address Raison sociale et adresse du fournisseur/de l'entrepreneur	
Telephone No. - N° de téléphone Facsimile No. - N° de télécopieur	
Name and title of person authorized to sign on behalf of Vendor/Firm (type or print) Nom et titre de la personne autorisée à signer au nom du fournisseur/ de l'entrepreneur (taper ou écrire en caractères d'imprimerie)	
Signature	Date

SOLICITATION AMENDMENT 001

This Amendment is raised to:

- a) Address questions and revise the Solicitation.

Question 1

Regarding Annex A (Statement of Work), Tug and Barge Services:

Part 1.1.7.1 indicates CCG is responsible to load the building halves and associated equipment.

Part 1.2.1.3 indicates that Contractor is responsible for "loading securing of the building halves" and "includes providing load securing materials and or equipment,"

Can you please confirm that CCG in Victoria is responsible for loading the building and other equipment in accordance with Contractor supplied Loading Plan, and the Contractor is responsible for all gear and manpower to secure the load for transit?

Response to Question 1

CCG is responsible for loading the building halves and associated equipment. The contractor is responsible for load securing of building halves and associated equipment. Section 1.2.1.4 requires a Plan from the contractor that identifies the proposed loading arrangement that will allow CCG to discuss with the Contractor prior to loading to ensure the load can be easily offloaded during sling operations as per Section 1.1.7.1.1.

Question 2:

Regarding Annex A (Statement of Work), Tug and Barge Services:

Part 1.1.7 is states "work divided into the following components: load barge, transit, demolition, resupply, construction, and transit and unload barge". This section only covers Load, Transport and Staging. On completion of offload at Gil Island, will there be any material or debris left onboard that needs to be disposed of or is the barge expected to be empty and can be used in other services?

Response to Question 2

Part 1.1.7 should read as "The work is divided into the following components: Barge Loading, Transportation and Staging".

The barge is expected to be empty and can be used in other services once the staging work is complete and all building halves and associated equipment has been slung to site.

Question 3

Regarding building and material positioning and clearance on the barge:

- a. Do the two buildings require 6m of clearance between one another or is 3m between the two sufficient?
- b. With the assistance of a pallet jack or forklift on the barge, can we move the smaller items around as the buildings and larger items get unloaded to accommodate the clearance requirements for those?

Response Question 3

- a. Buildings require a 3m clearance around the perimeter, 3m between the two is sufficient.
- b. Yes, provided the loads can be secured, there are no delays to slinging operations as a result of moving items and the barge meets all the space requirements detailed in Annex A – Statement of Work, Section 35 10 00 Parts 1.4 and 1.5.

N° de l'invitation - Solicitation No.
F1705-210009/A
N° de réf. du client - Client Ref. No.
F1705-210009

N° du motif - AMD. No.
001
File No. - N° du dossier

Id de l'acheteur - Buer ID
xl594
N° CCC / CCC No./ N° VME - FMS

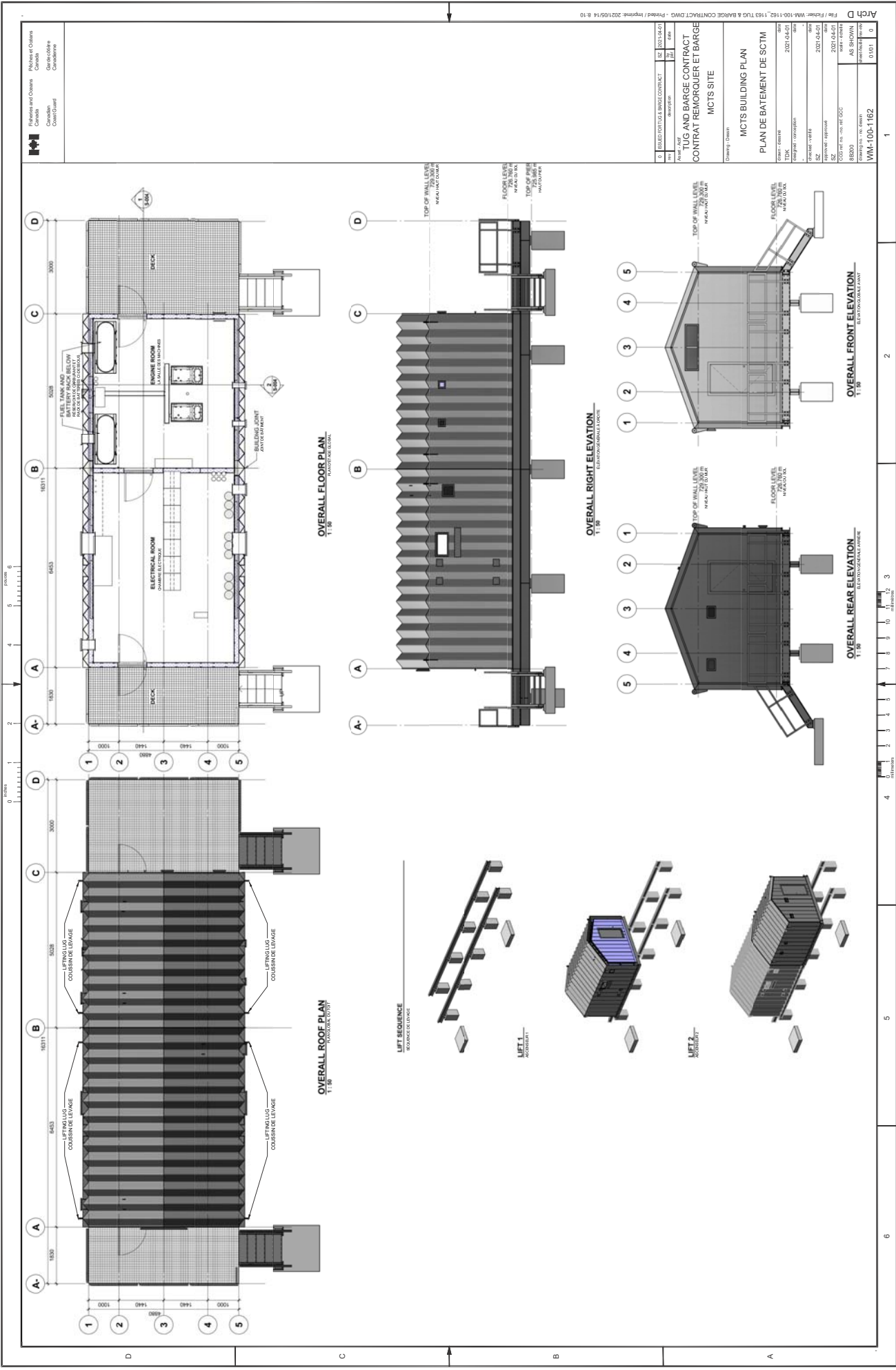
Revision 1:

Replace:

Annex A - Statement of Work- Appendix D MCTS Building Plan in its entirety.

With:

Annex A - Statement of Work- Appendix D MCTS Building Plan in its entirety.
Consists of 1 page and starts on next page.



Arch		File / Fiche: WM-100-1162	1163 TUG & BARGE CONTRACT DWS - Printed / Imprimé: 2021/05/14 8:10
Drawing - Client		Client / Client	AS SHOWN
Drawing - Designer		Designer / Designer	WM-100-1162
Drawing - Date		Date	01/01/2021
Drawing - Revision		Revision	01/01/2021
Drawing - Scale		Scale	1:50
Drawing - Project		Project	1163 TUG & BARGE CONTRACT DWS
Drawing - Title		Title	MCTS BUILDING PLAN
Drawing - Description		Description	PLAN DE BATEMENT DE SCTM
Drawing - Author		Author	WM-100-1162
Drawing - Checker		Checker	WM-100-1162
Drawing - Approver		Approver	WM-100-1162
Drawing - Status		Status	AS SHOWN
Drawing - Notes		Notes	
Drawing - Comments		Comments	
Drawing - Revision History		Revision History	
Drawing - Revision 1		Revision 1	01/01/2021
Drawing - Revision 2		Revision 2	01/01/2021
Drawing - Revision 3		Revision 3	01/01/2021
Drawing - Revision 4		Revision 4	01/01/2021
Drawing - Revision 5		Revision 5	01/01/2021
Drawing - Revision 6		Revision 6	01/01/2021
Drawing - Revision 7		Revision 7	01/01/2021
Drawing - Revision 8		Revision 8	01/01/2021
Drawing - Revision 9		Revision 9	01/01/2021
Drawing - Revision 10		Revision 10	01/01/2021
Drawing - Revision 11		Revision 11	01/01/2021
Drawing - Revision 12		Revision 12	01/01/2021
Drawing - Revision 13		Revision 13	01/01/2021
Drawing - Revision 14		Revision 14	01/01/2021
Drawing - Revision 15		Revision 15	01/01/2021
Drawing - Revision 16		Revision 16	01/01/2021
Drawing - Revision 17		Revision 17	01/01/2021
Drawing - Revision 18		Revision 18	01/01/2021
Drawing - Revision 19		Revision 19	01/01/2021
Drawing - Revision 20		Revision 20	01/01/2021
Drawing - Revision 21		Revision 21	01/01/2021
Drawing - Revision 22		Revision 22	01/01/2021
Drawing - Revision 23		Revision 23	01/01/2021
Drawing - Revision 24		Revision 24	01/01/2021
Drawing - Revision 25		Revision 25	01/01/2021
Drawing - Revision 26		Revision 26	01/01/2021
Drawing - Revision 27		Revision 27	01/01/2021
Drawing - Revision 28		Revision 28	01/01/2021
Drawing - Revision 29		Revision 29	01/01/2021
Drawing - Revision 30		Revision 30	01/01/2021
Drawing - Revision 31		Revision 31	01/01/2021
Drawing - Revision 32		Revision 32	01/01/2021
Drawing - Revision 33		Revision 33	01/01/2021
Drawing - Revision 34		Revision 34	01/01/2021
Drawing - Revision 35		Revision 35	01/01/2021
Drawing - Revision 36		Revision 36	01/01/2021
Drawing - Revision 37		Revision 37	01/01/2021
Drawing - Revision 38		Revision 38	01/01/2021
Drawing - Revision 39		Revision 39	01/01/2021
Drawing - Revision 40		Revision 40	01/01/2021
Drawing - Revision 41		Revision 41	01/01/2021
Drawing - Revision 42		Revision 42	01/01/2021
Drawing - Revision 43		Revision 43	01/01/2021
Drawing - Revision 44		Revision 44	01/01/2021
Drawing - Revision 45		Revision 45	01/01/2021
Drawing - Revision 46		Revision 46	01/01/2021
Drawing - Revision 47		Revision 47	01/01/2021
Drawing - Revision 48		Revision 48	01/01/2021
Drawing - Revision 49		Revision 49	01/01/2021
Drawing - Revision 50		Revision 50	01/01/2021
Drawing - Revision 51		Revision 51	01/01/2021
Drawing - Revision 52		Revision 52	01/01/2021
Drawing - Revision 53		Revision 53	01/01/2021
Drawing - Revision 54		Revision 54	01/01/2021
Drawing - Revision 55		Revision 55	01/01/2021
Drawing - Revision 56		Revision 56	01/01/2021
Drawing - Revision 57		Revision 57	01/01/2021
Drawing - Revision 58		Revision 58	01/01/2021
Drawing - Revision 59		Revision 59	01/01/2021
Drawing - Revision 60		Revision 60	01/01/2021
Drawing - Revision 61		Revision 61	01/01/2021
Drawing - Revision 62		Revision 62	01/01/2021
Drawing - Revision 63		Revision 63	01/01/2021
Drawing - Revision 64		Revision 64	01/01/2021
Drawing - Revision 65		Revision 65	01/01/2021
Drawing - Revision 66		Revision 66	01/01/2021
Drawing - Revision 67		Revision 67	01/01/2021
Drawing - Revision 68		Revision 68	01/01/2021
Drawing - Revision 69		Revision 69	01/01/2021
Drawing - Revision 70		Revision 70	01/01/2021
Drawing - Revision 71		Revision 71	01/01/2021
Drawing - Revision 72		Revision 72	01/01/2021
Drawing - Revision 73		Revision 73	01/01/2021
Drawing - Revision 74		Revision 74	01/01/2021
Drawing - Revision 75		Revision 75	01/01/2021
Drawing - Revision 76		Revision 76	01/01/2021
Drawing - Revision 77		Revision 77	01/01/2021
Drawing - Revision 78		Revision 78	01/01/2021
Drawing - Revision 79		Revision 79	01/01/2021
Drawing - Revision 80		Revision 80	01/01/2021
Drawing - Revision 81		Revision 81	01/01/2021
Drawing - Revision 82		Revision 82	01/01/2021
Drawing - Revision 83		Revision 83	01/01/2021
Drawing - Revision 84		Revision 84	01/01/2021
Drawing - Revision 85		Revision 85	01/01/2021
Drawing - Revision 86		Revision 86	01/01/2021
Drawing - Revision 87		Revision 87	01/01/2021
Drawing - Revision 88		Revision 88	01/01/2021
Drawing - Revision 89		Revision 89	01/01/2021
Drawing - Revision 90		Revision 90	01/01/2021
Drawing - Revision 91		Revision 91	01/01/2021
Drawing - Revision 92		Revision 92	01/01/2021
Drawing - Revision 93		Revision 93	01/01/2021
Drawing - Revision 94		Revision 94	01/01/2021
Drawing - Revision 95		Revision 95	01/01/2021
Drawing - Revision 96		Revision 96	01/01/2021
Drawing - Revision 97		Revision 97	01/01/2021
Drawing - Revision 98		Revision 98	01/01/2021
Drawing - Revision 99		Revision 99	01/01/2021
Drawing - Revision 100		Revision 100	01/01/2021