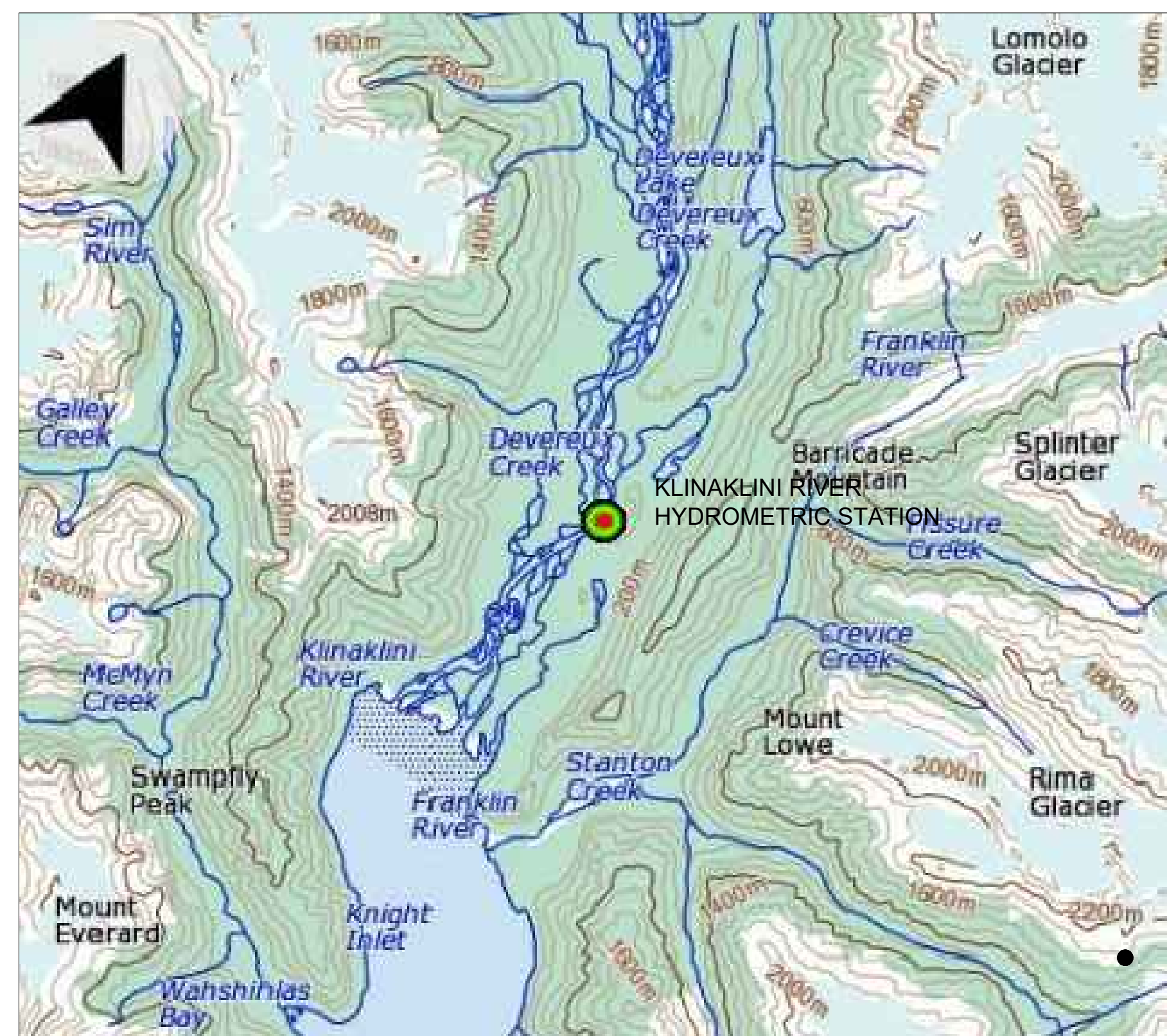


FOR BIDDING PURPOSES

NOTES:
- PHOTOS SHOW EXISTING CONDITIONS

HOME-SIDE



LOCATION MAP



PHOTO 1: HOME-SIDE GENERAL VIEW



PHOTO 2: BACK VIEW OF EXISTING A-FRAME AND COMPONENTS



PHOTO 3: EXISTING CABLE TERMINATIONS, HARDWARE AND FITTINGS

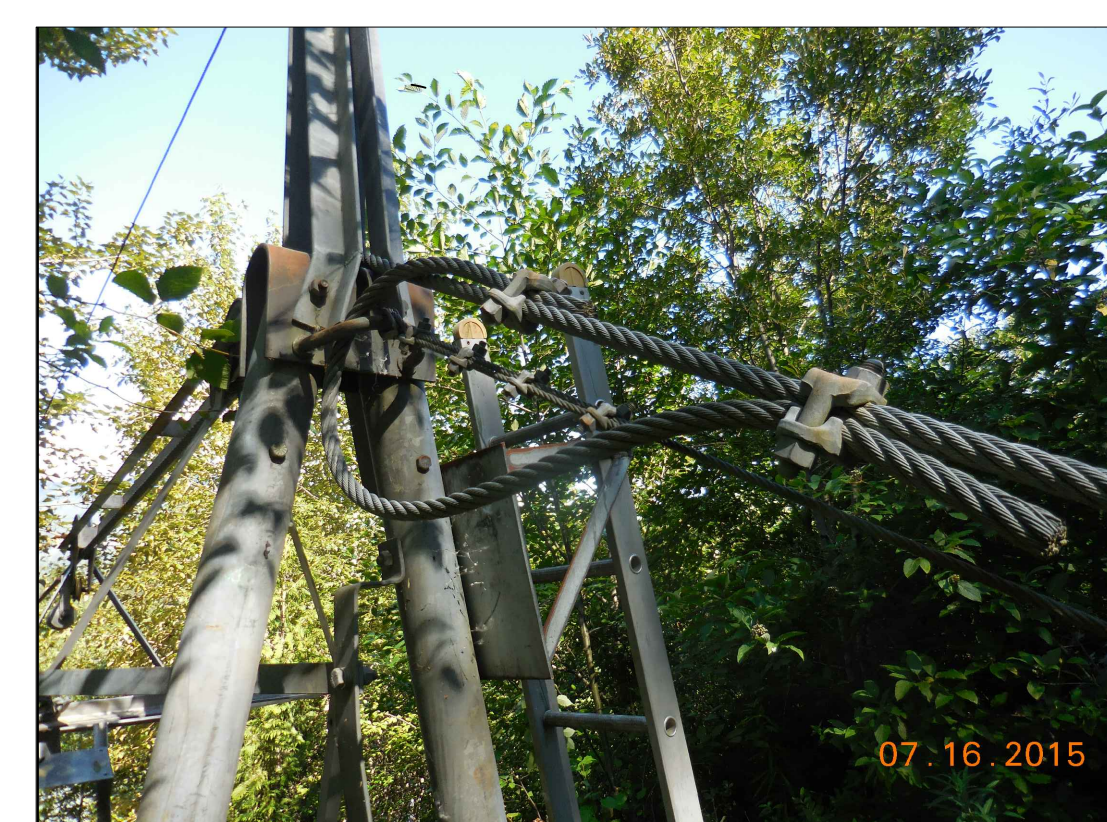


PHOTO 4: EXISTING SAFETY LOOP AND TIEBACK CABLE CONNECTIONS AT THE A-FRAME

GENERAL



PHOTO 5: KLINAKLINI RIVER GENERAL VIEW

FAR-SIDE

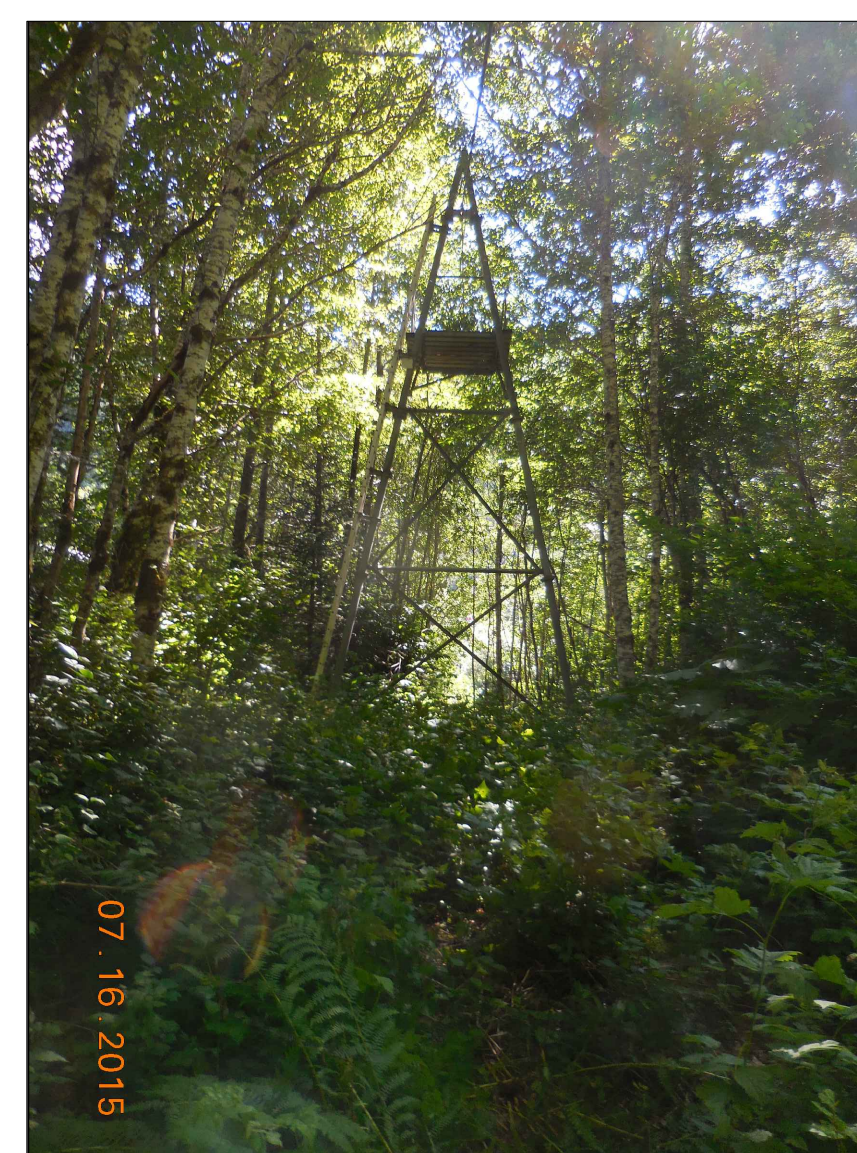


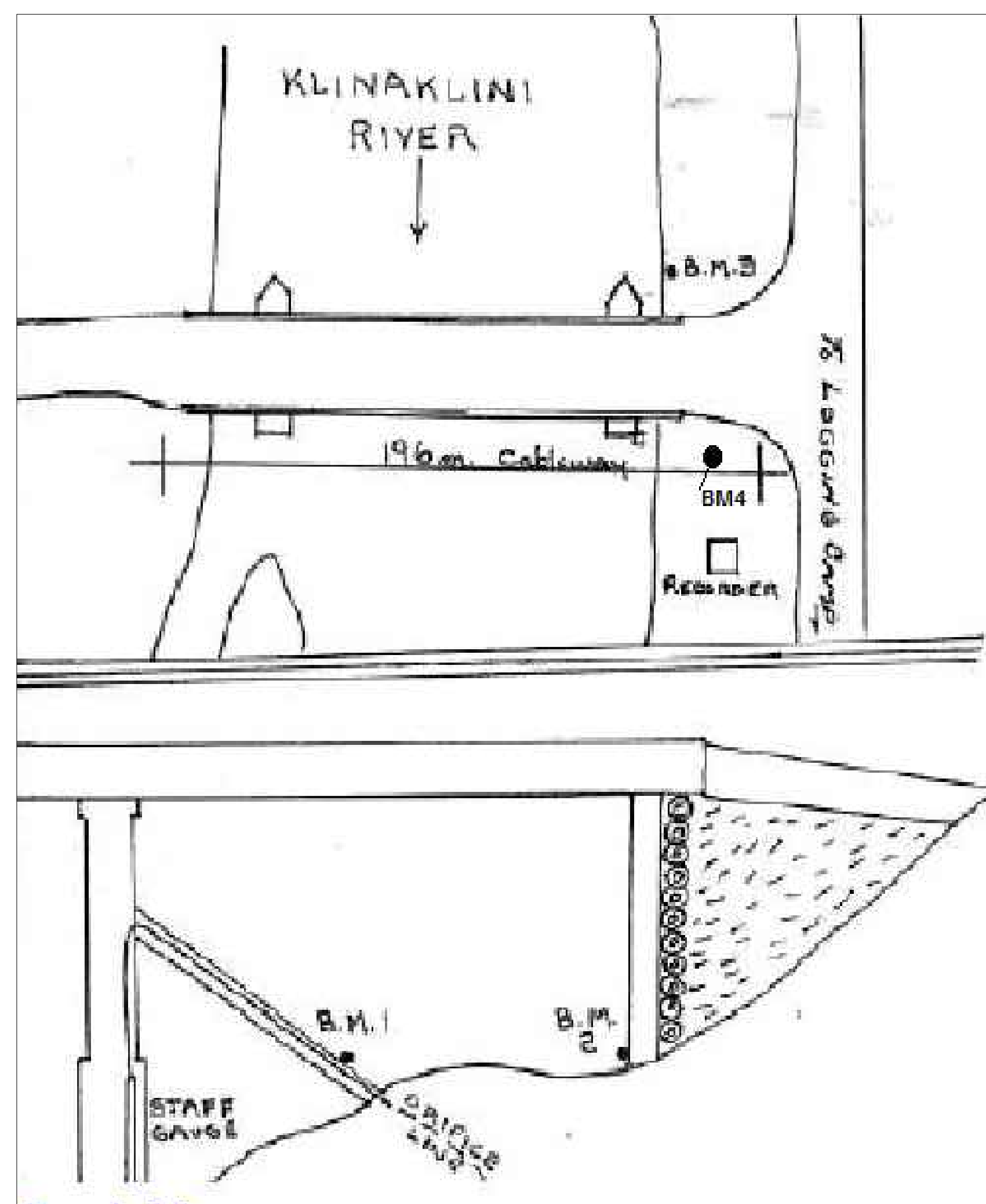
PHOTO 6: BACK VIEW OF EXISTING A-FRAME AND COMPONENTS



PHOTO 7: EXISTING BRIDLE



PHOTO 8: EXISTING CONNECTION OF A-FRAME TO FOOTING



STATION SITE MAP

0	ISSUED FOR CONSTRUCTION	2020-02-09
---	-------------------------	------------

**CABLEWAY UPGRADES & REPAIRS
KLINAKLINI RIVER
(08GE002)**

**KLINAKLINI RIVER EAST CHANNEL (MAIN) NEAR THE MOUTH
BRITISH COLUMBIA**

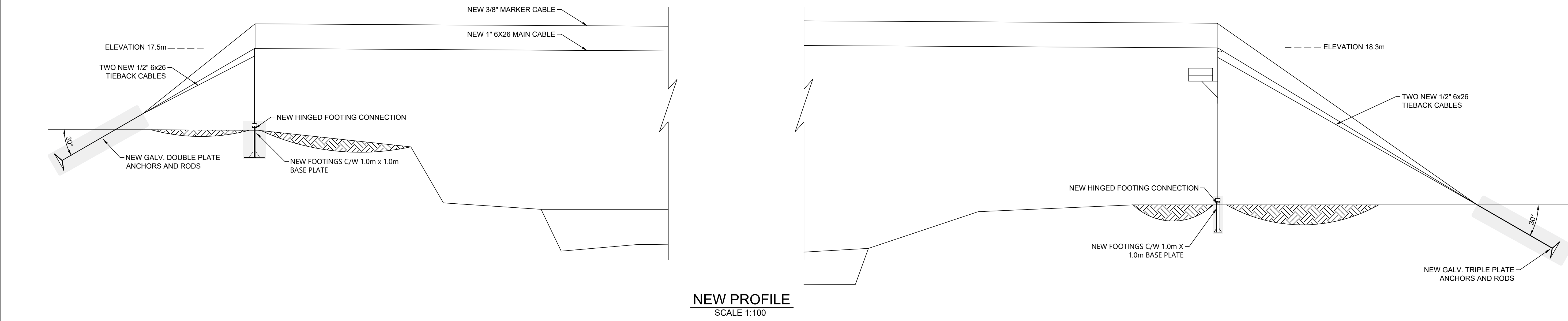
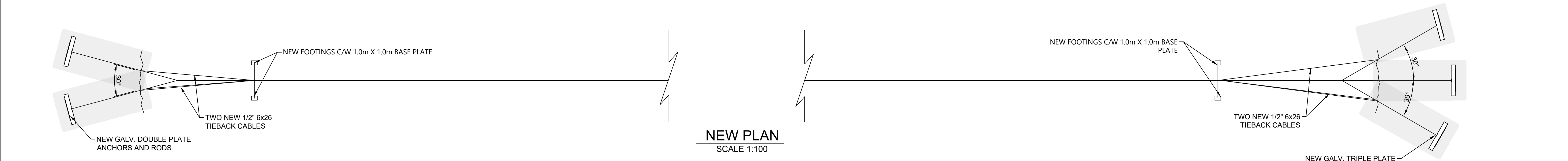
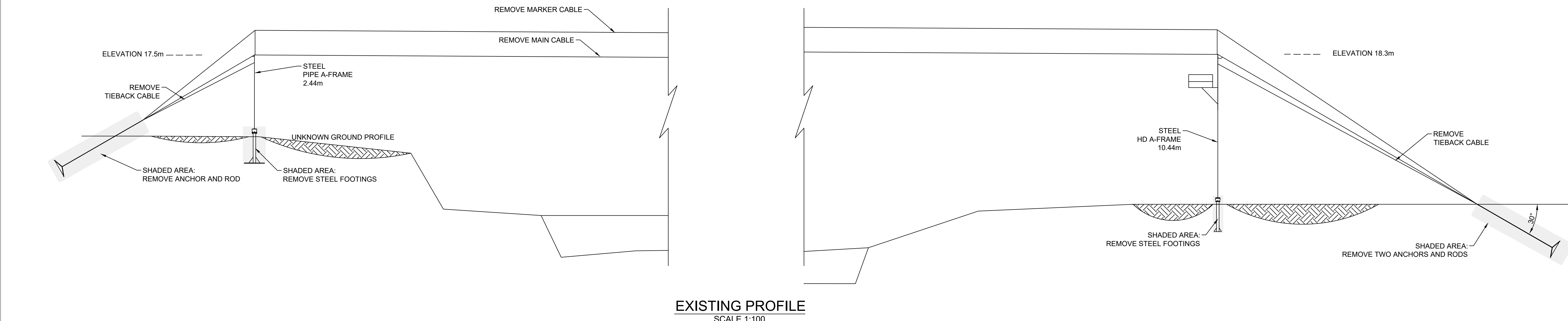
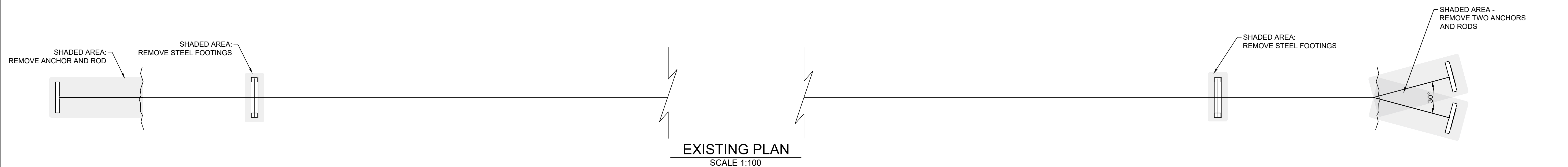
Designed by: ECCC
Drawn by: ECCC
Approved by: ECCC
ECCC Project Manager
Drawing title: SITE LOCATION AND LAYOUT

SITE LOCATION AND LAYOUT

Project no./No. du projet	Drawing no./No. du dessin	Revision no.
2021-09	DWG-02	0

FOR BIDDING PURPOSES

NOTES:
- RIGHT BANK A-FRAME NOT TO SCALE



0	ISSUED FOR CONSTRUCTION	2020-02-09
---	-------------------------	------------

Revision	Description	Date
----------	-------------	------

**CABLEWAY UPGRADES & REPAIRS
KLINAKLINI RIVER
(08GE002)**

**KLINAKLINI RIVER EAST
CHANNEL (MAIN) NEAR THE
MOUTH
BRITISH COLUMBIA**

Designed by
ECCC

Drawn by
ECCC

Approved by
ECCC

ECCC Project Manager
ECCC

Administrateur de Projets ECCC

Drawing title
Titre du dessin

ASSET REMOVAL PLAN

Project no./No. du projet	Drawing no./No. du dessin	Revision no.
2021-09	DWG-03	0

WORK INCLUDES:

LEFT BANK HOME SIDE:

- A) REMOVE SINGLE ANCHOR AND INSTALL NEW DOUBLE PLATE ANCHOR SYSTEM AND ANCHOR TIEBACK PLATES
- B) REMOVE 3/8" TIEBACK CABLE AND REPLACE WITH TWO NEW 1/2" 6X26 EIPS IWRC CABLES
- C) INSTALL ALL CABLE ACCESSORIES (FIST GRIPS, THIMBLES, TURNBUCKLES) IN ACCORDANCE WITH MANUFACTURER SPECIFICATIONS
 - A) FIST GRIPS ARE PER MANUFACTURER SPECIFICATIONS WITH ADDITIONAL FIST GRIPS AS SHOWN IN DWG-05
- D) INSTALL NEW A-FRAME PIPE FOOTINGS AND FOOTING ACCESSORIES AS SHOWN IN DWG-07
- E) RE-SET A-FRAME TO PLUMB
- F) REPLACE A-FRAME LADDER
- G) INSTALL CABLEWAY DANGER SIGN
- H) INSTALL MAIN CABLE SAFETY LOOP AS SHOWN IN DWG-05
- I) BACKFILL IN 300 LIFTS PER THE SPECIFICATIONS

RIGHT BANK FAR SIDE:

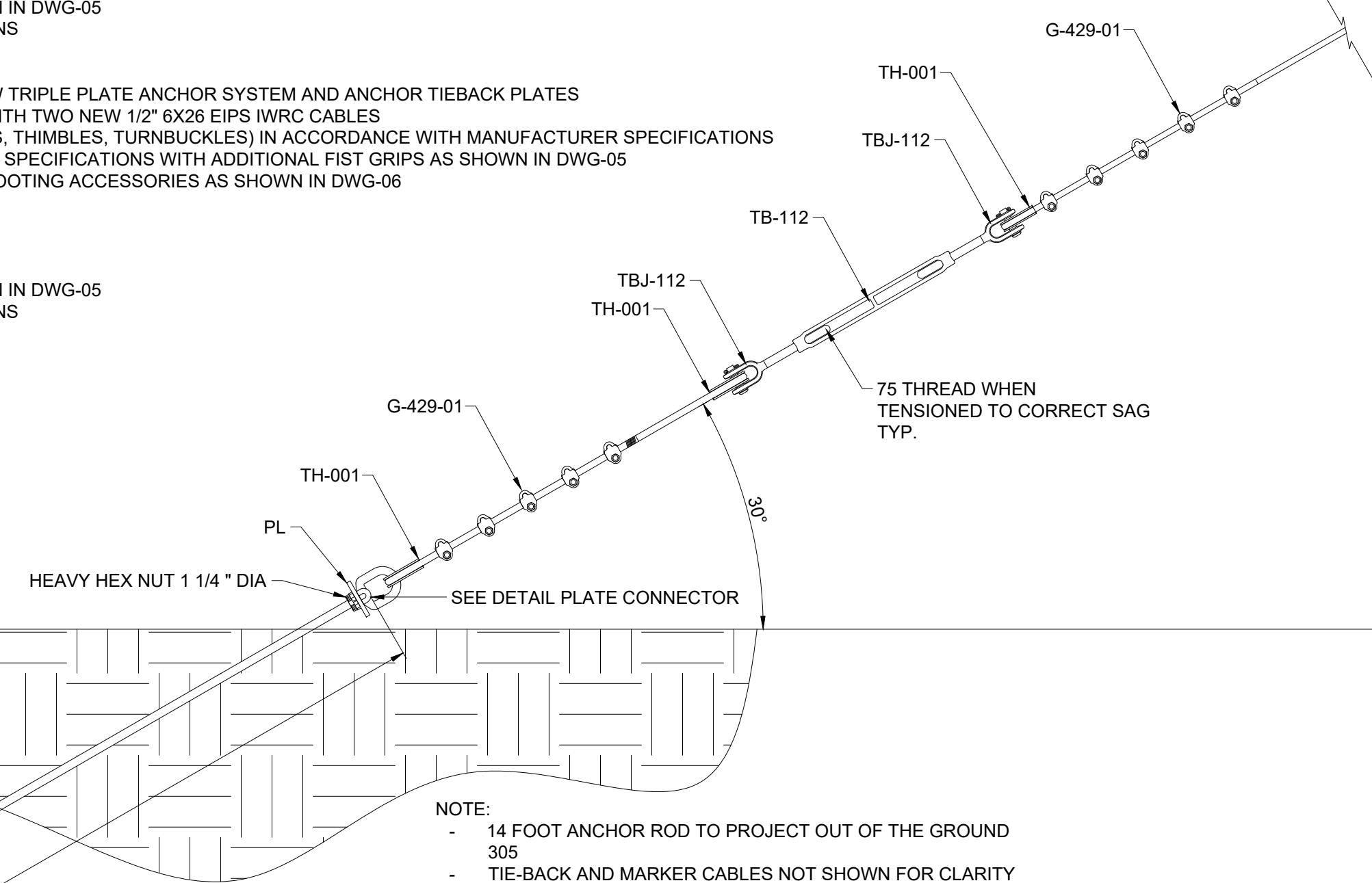
- A) REMOVE DOUBLE ANCHORS AND INSTALL NEW TRIPLE PLATE ANCHOR SYSTEM AND ANCHOR TIEBACK PLATES
- B) REMOVE 3/8" TIEBACK CABLE AND REPLACE WITH TWO NEW 1/2" 6X26 EIPS IWRC CABLES
- C) INSTALL ALL CABLE ACCESSORIES (FIST GRIPS, THIMBLES, TURNBUCKLES) IN ACCORDANCE WITH MANUFACTURER SPECIFICATIONS
 - A) FIST GRIPS ARE PER MANUFACTURER SPECIFICATIONS WITH ADDITIONAL FIST GRIPS AS SHOWN IN DWG-05
- D) INSTALL NEW A-FRAME PIPE FOOTINGS AND FOOTING ACCESSORIES AS SHOWN IN DWG-06
- E) RE-SET A-FRAME TO PLUMB
- F) REPLACE A-FRAME LADDER
- G) INSTALL A-FRAME SAFETY BAR
- H) REPLACE ONE PLATFORM BOARD
- I) INSTALL MAIN CABLE SAFETY LOOP AS SHOWN IN DWG-05
- J) BACKFILL IN 300 LIFTS PER THE SPECIFICATIONS

GENERAL:

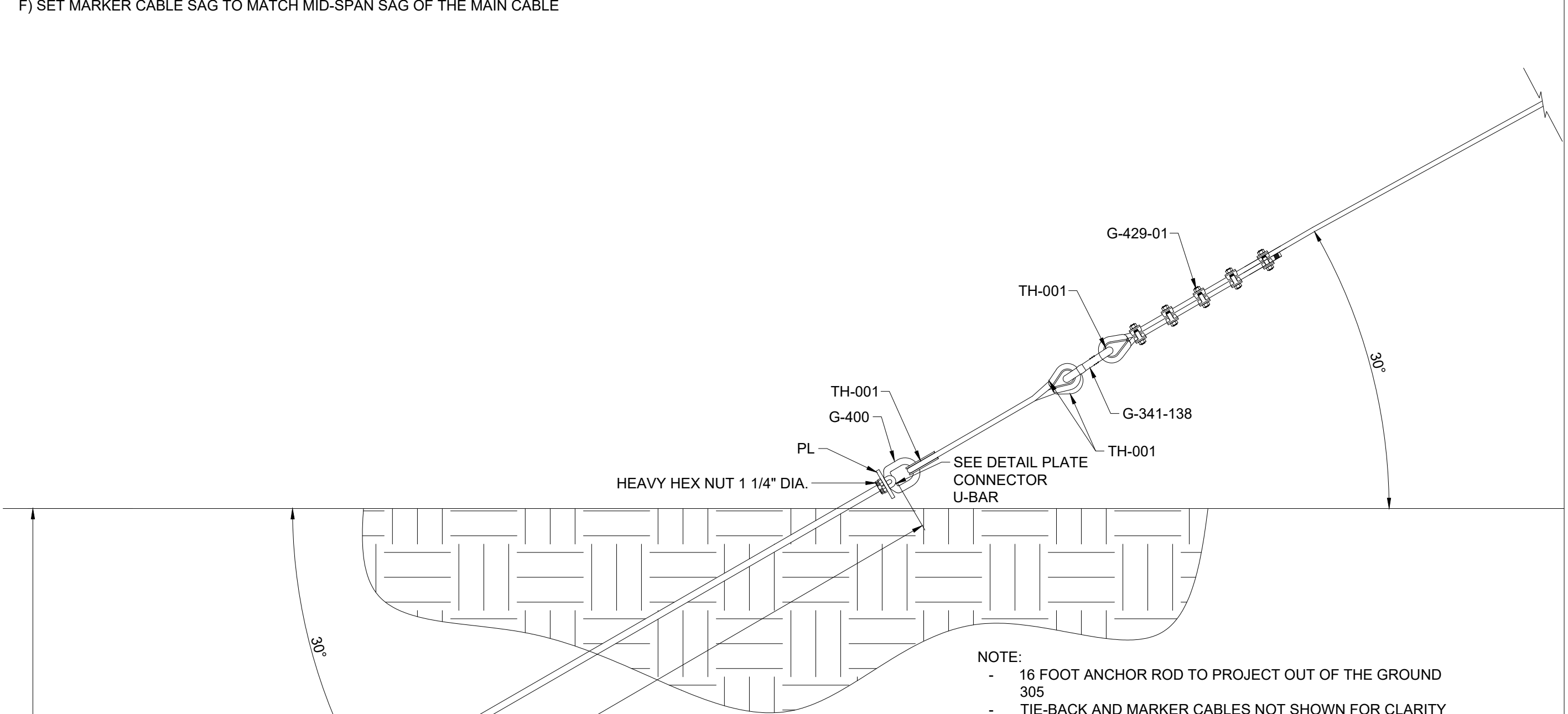
- A) REMOVE EXISTING MAIN CABLE AND REPLACE WITH NEW 1" 6X26 EIPS IWRC CABLE
- B) INSTALL ALL MAIN CABLE ACCESSORIES (FIST GRIPS, THIMBLES, TURNBUCKLES) IN ACCORDANCE WITH MANUFACTURER SPECIFICATIONS
 - A) FIST GRIPS ARE PER MANUFACTURER SPECIFICATIONS WITH ADDITIONAL FIST GRIPS AS SHOWN IN DWG-05
- C) SET MAIN CABLE SAG PER SAG TABLE SHOWN IN SPECIFICATIONS
- D) REMOVE EXISTING MARKER CABLE AND REPLACE WITH NEW 3/8" CABLE
- E) INSTALL ALL MARKER CABLE ACCESSORIES (FIST GRIPS, THIMBLES, TURNBUCKLES) IN ACCORDANCE WITH MANUFACTURER SPECIFICATIONS
 - A) FIST GRIPS ARE PER MANUFACTURER SPECIFICATIONS WITH ADDITIONAL FIST GRIPS AS SHOWN IN DWG-05
- F) SET MARKER CABLE SAG TO MATCH MID-SPAN SAG OF THE MAIN CABLE

FOR BIDDING PURPOSES

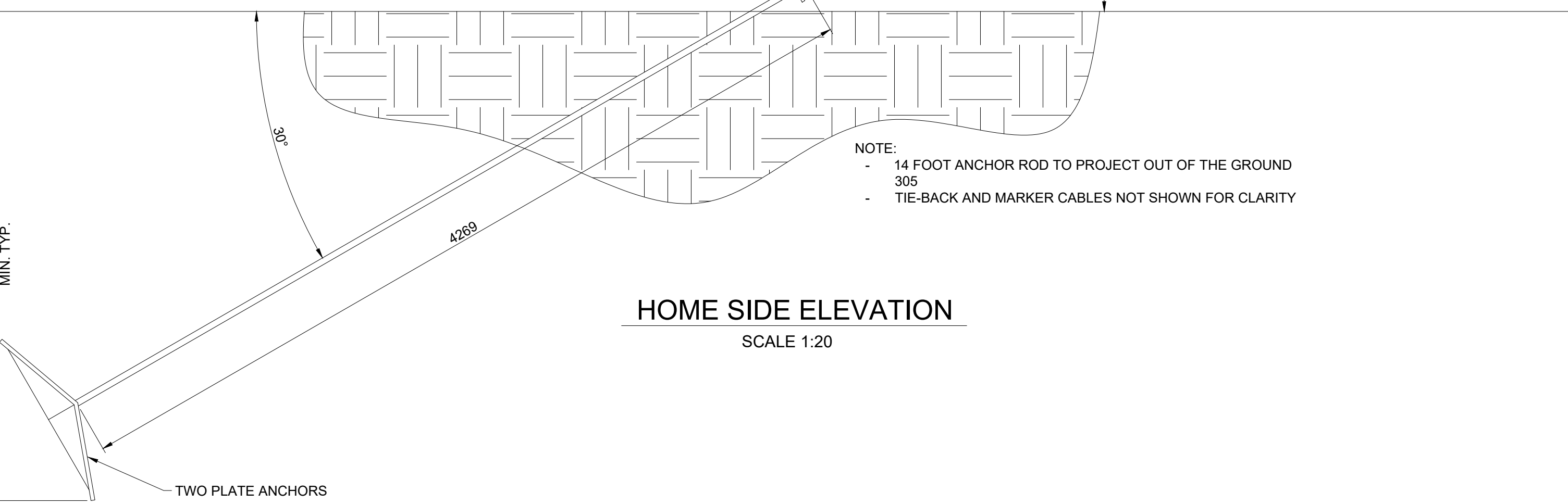
- NOTES:
- ALL DIMENSIONS IN MILLIMETERS UNLESS STATED OTHERWISE
 - ENVIRONMENT AND CLIMATE CHANGE CANADA WILL PROVIDE:
 - ALL ITEMS IN TABLE 1 IN DWG-05
 - CONTRACTOR TO VERIFY ALL DIMENSIONS PRIOR TO START OF WORK
 - ALL ITEMS SHOWN ARE NEW U.N.O
 - ECC WILL PLACE TH-100 AROUND G-400 EYE NUT
 - CONTRACTOR RESPONSIBLE FOR SPARE PARTS REQUIRED TO REPLACE DAMAGED DURING CONSTRUCTION PARTS
 - CONTRACTOR RESPONSIBLE TO PROVIDE ALL WORK/EQUIPMENT REQUIRED TO HAVE FUNCTIONAL CABLEWAY AS INTENDED IN THIS PROJECT



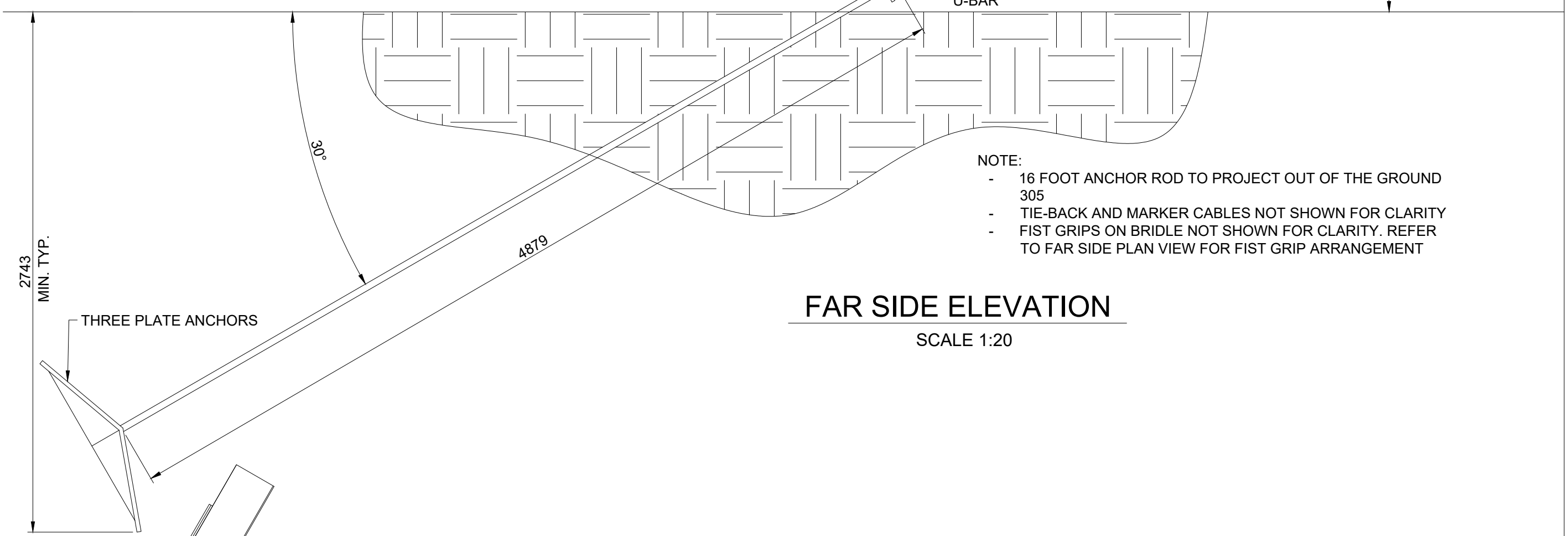
HOME SIDE ELEVATION
SCALE 1:20



FAR SIDE ELEVATION
SCALE 1:20



HOME SIDE PLAN
SCALE 1:20



FAR SIDE PLAN
SCALE 1:20

0	ISSUED FOR CONSTRUCTION	2020-02-09
Revision	Description	Date
Project		Project

CABLEWAY UPGRADES & REPAIRS
KLINAKLINI RIVER
(08GE002)

KLINAKLINI RIVER EAST CHANNEL (MAIN) NEAR THE MOUTH
BRITISH COLUMBIA

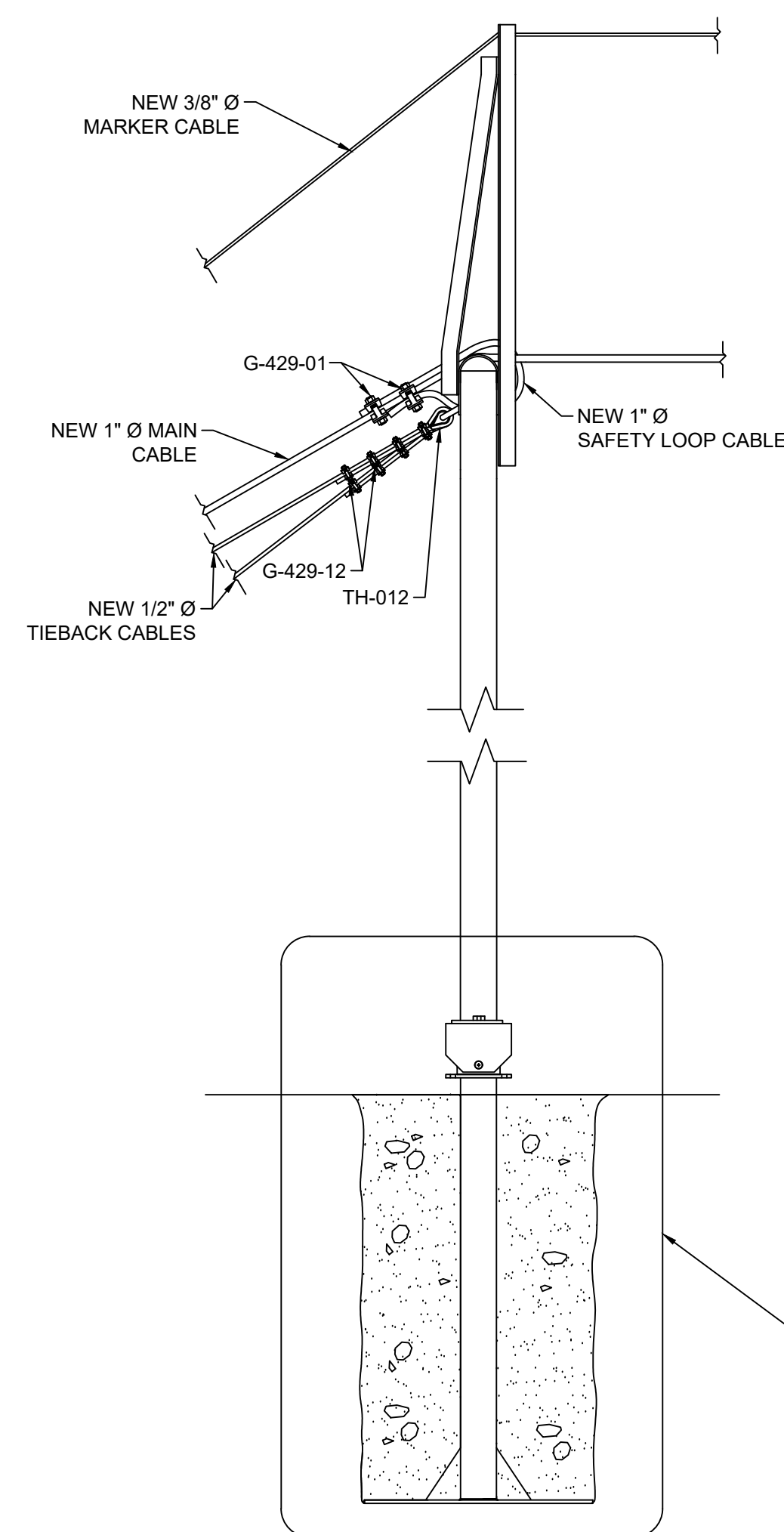
Designed by ECCC	Conçu par ECCC
Drawn by ECCC	Dessiné par ECCC
Approved by ECCC	Approuvé par ECCC
ECCC Project Manager	Administrateur de Projets ECCC
Drawing title	Titre du dessin

PLATE ANCHOR AND ROPE ATTACHMENTS (1 OF 2)

Project no./No. du projet	Drawing no./No. du dessin	Revision no.
2021-09	DWG-04	0

FOR BIDDING PURPOSES

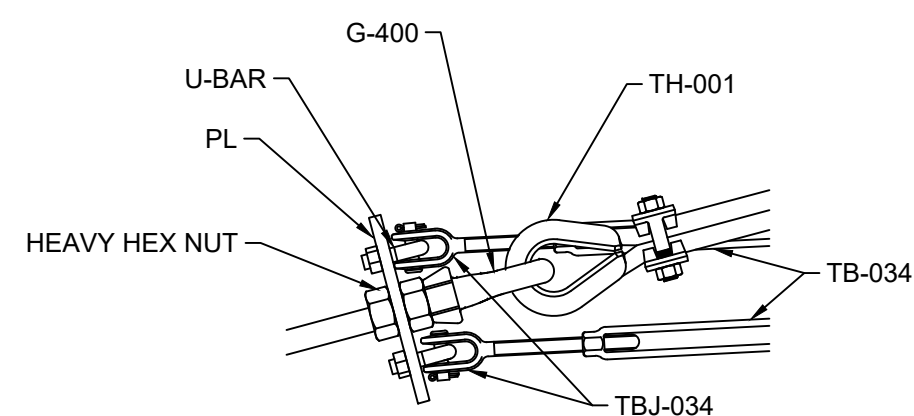
- REFER TO NOTES IN DWG-04



SEE DWG-06 AND DWG-07 FOR DIMENSIONED FOOTING LAYOUT

- NOTE:
- GENERAL LAYOUT OF TOWER & FOOTING SHOWN REPRESENTING BOTH BANKS
 - SITE SPECIFIC TOWER AND FOOTING DIMENSIONS MAY VARY
 - TOWER AND FOOTINGS ARE PIN CONNECTED AND ARE FREE TO ROTATE WITHOUT CABLES ATTACHED

TOWER
SCALE 1:20



DETAIL CONNECTION A
SCALE 1:10

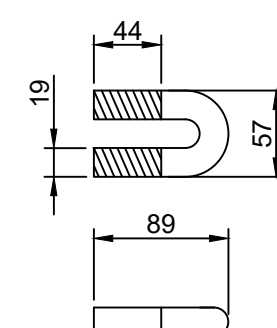
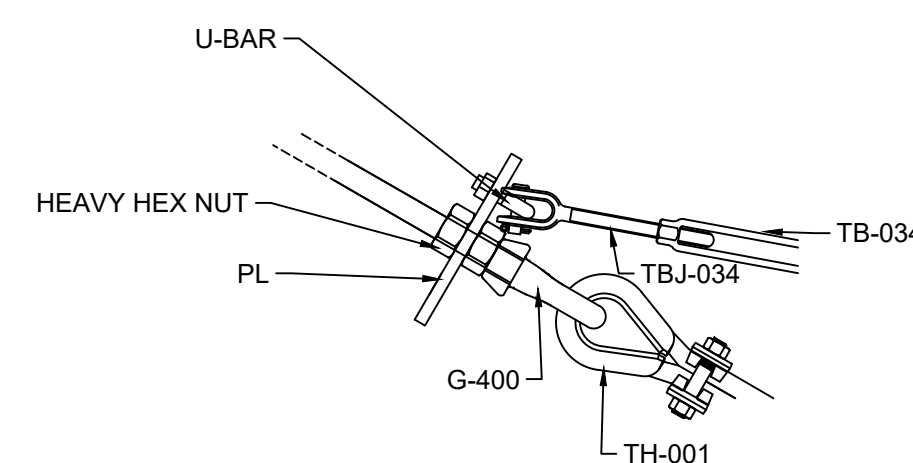
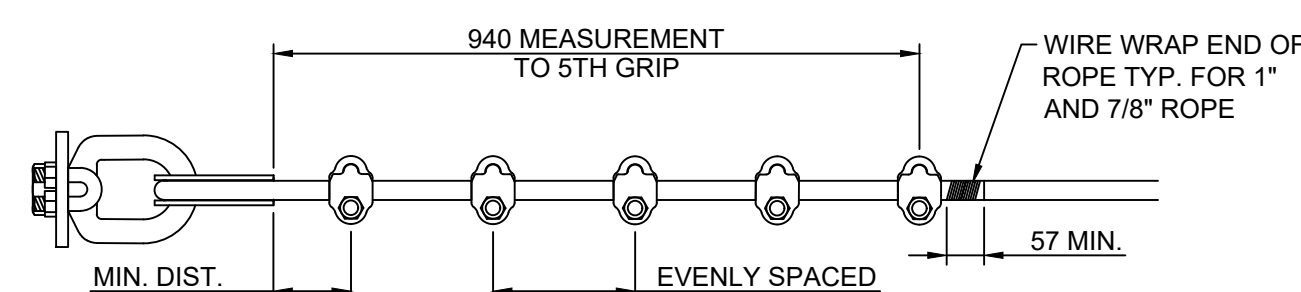


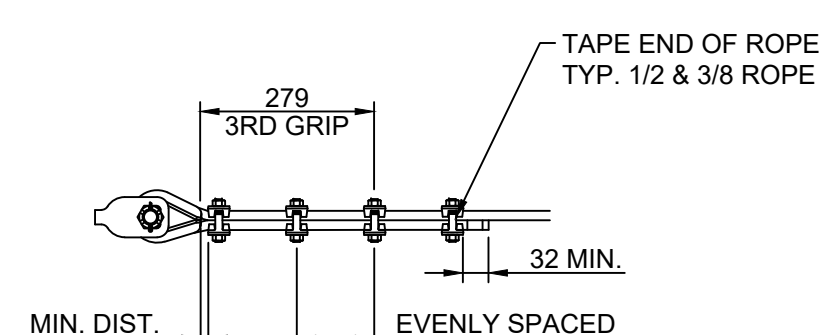
PLATE CONNECTOR U-BAR
SCALE 1:5



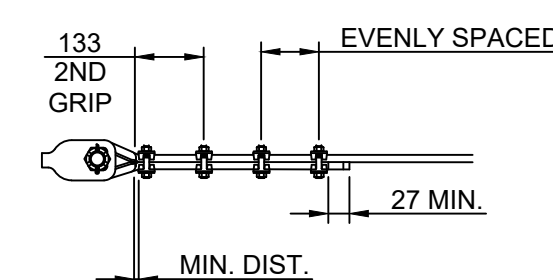
DETAIL CONNECTION B
SCALE 1:10



1 INCH FIST GRIP SPACING
SCALE 1:10



1/2 INCH FIST GRIP SPACING
SCALE 1:10



3/8 INCH FIST GRIP SPACING
SCALE 1:10

NOTE: MEASUREMENTS TO NTH GRIP ARE TO CONFORM WITH CROSBY CATALOGUE SPECIFICATIONS. TO DETERMINE SPACING BETWEEN ALL GRIPS FOR EACH FIGURE, SUBTRACT MIN.DIST. FROM MEASUREMENT TO NTH GRIP AND DIVIDE BY TOTAL NUMBER OF CLAMPS MINUS ONE (EVEN SPACING)

ID #	DESCRIPTION	QUANTITY
G-429-01	CROSBY 429 GRIP CLIPS 1" DIA.	34
G-429-12	CROSBY 429 GRIP CLIPS 1/2" DIA.	32
G-429-38	CROSBY 429 GRIP CLIPS 3/8" DIA.	8
TH-001	THIMBLE 1"	10
TH-012	THIMBLE 1/2"	8
TH-038	THIMBLE 3/8"	2
TB-112	TURNBUCKLE 1 1/2"	1
TB-034	TURNBUCKLE 3/4"	5
TBJ-112	JAW END 1 1/2" DIA.	2
TBJ-034	JAW END 3/4" DIA.	10
G-400	CROSBY 400 EYE NUT	5
G-341-138	CROSBY 1-3/8" G-341 GALVANIZED PEAR LINK	1
PL	ANCHOR ROD TIE-BACK PLATE	4
U-BAR	PLATE CONNECTOR U-BAR WITH NUTS	6
HEAVY HEX NUT	HEAVY HEX NUT	9
MAIN, BRIDLE, & SAFETY LOOP WIRE ROPE	1" Ø GALV. 6X26 EIPS IWRC	
MARKER WIRE ROPE	3/8" Ø GALV. 6X26 EIPS IWRC	
TIEBACK WIRE ROPE	1/2" Ø GALV. 6X26 EIPS IWRC	

0 ISSUED FOR CONSTRUCTION 2020-02-09

**CABLEWAY UPGRADES & REPAIRS
KLINAKLINI RIVER
(08GE002)**

**KLINAKLINI RIVER EAST
CHANNEL (MAIN) NEAR THE MOUTH
BRITISH COLUMBIA**

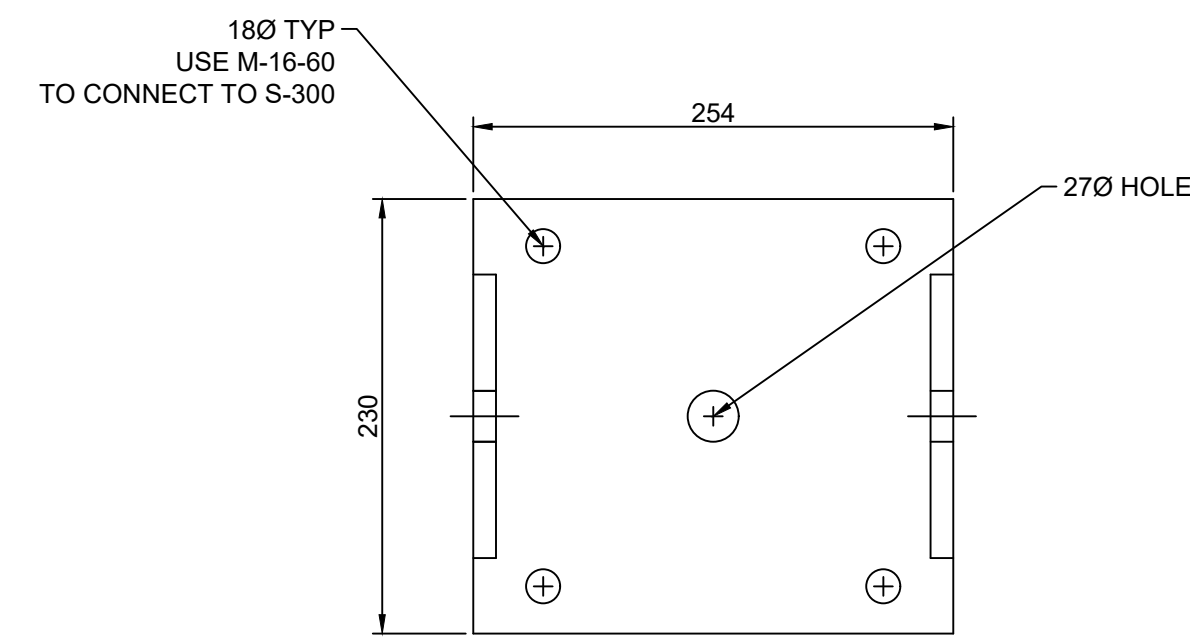
Designed by: ECCC
Drawn by: ECCC
Approved by: ECCC
ECCC Project Manager
Drawing title: PLATE ANCHOR AND ROPE ATTACHMENTS (2 OF 2)

Project no./No. du projet: 2021-09
Drawing no./No. du dessin: DWG-05
Revision no.: 0

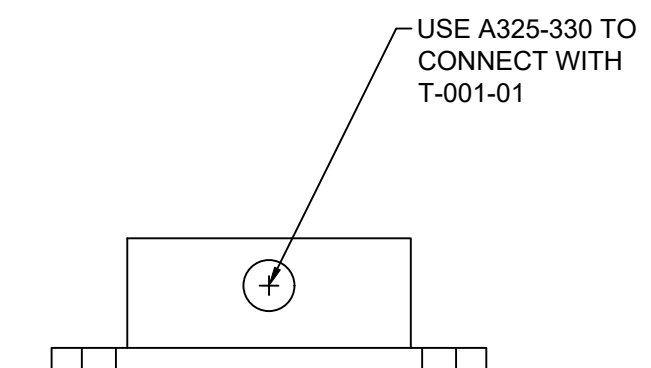
FOR BIDDING PURPOSES

- NOTES:
- THIS DRAWING REFERS TO THE RIGHT BANK FAR SIDE FOOTINGS AND COMPONENTS
 - ALL DIMENSION IN MILLIMETERS UNLESS STATED OTHERWISE
 - ENVIRONMENT AND CLIMATE CHANGE CANADA WILL PROVIDE ALL ITEMS LISTED IN TABLE 2
 - CONTRACTOR TO VERIFY ALL DIMENSIONS PRIOR TO START OF WORK
 - NUTS AND BOLTS IN DWG-06 ARE N.T.S
 - ALL ITEMS SHOWN ARE NEW U.N.O CONTRACTOR RESPONSIBLE FOR SPARE PARTS REQUIRED TO REPLACE DAMAGED DURING CONSTRUCTION PARTS
 - CONTRACTOR RESPONSIBLE TO PROVIDE ALL WORK/EQUIPMENT REQUIRED TO HAVE FUNCTIONAL FOOTINGS AS INTENDED IN THIS PROJECT

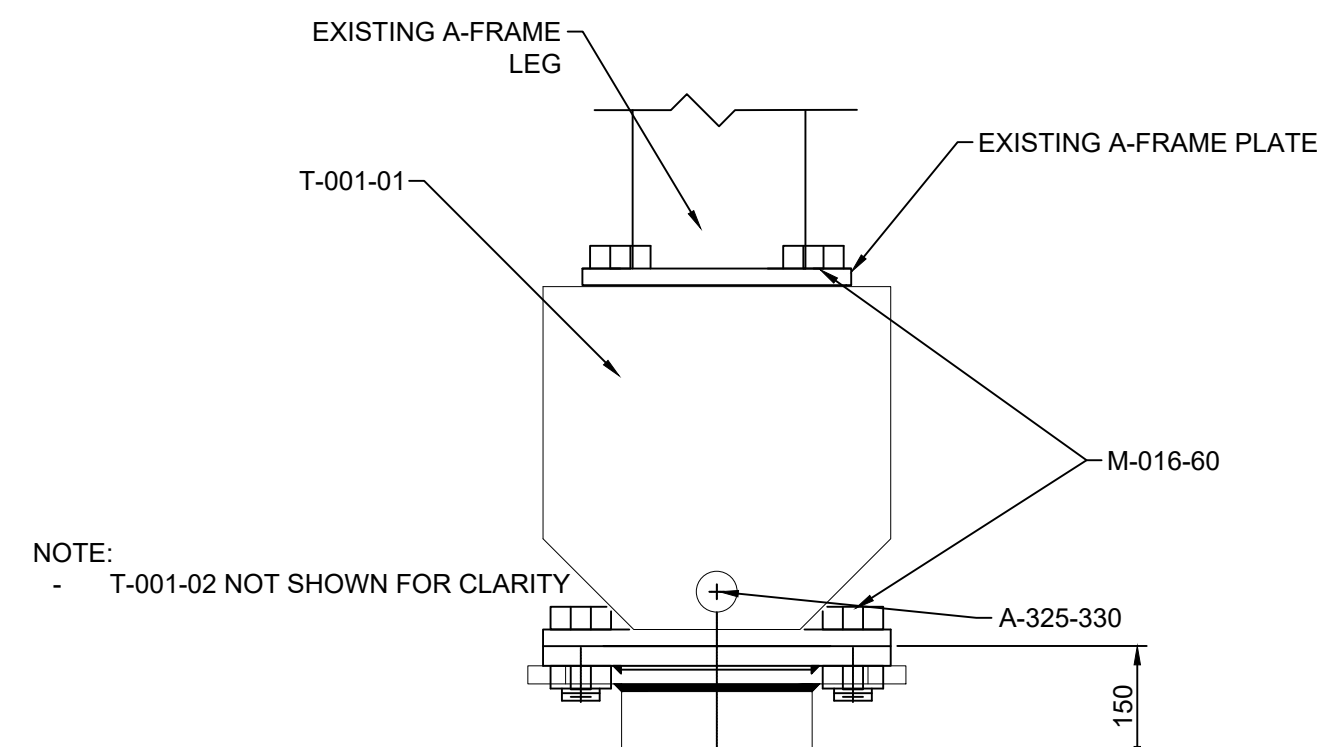
TABLE 2: STEEL PIPE FOOTING AND FOOTING MATERIALS		
ID #	DESCRIPTION	QUANTITY
A-325-330	A325 25X330 BOLT C/W NUT	2
M-016-60	M16X60 BOLTS C/W NUT AND WASHER	16
S-300	STEEL FOOTING W/ TOP AND BASE PLATES	2
T-001-01	TYPE ONE FOOT PIECE UPPER BRACKET	2
T-001-02	TYPE ONE FOOT PIECE LOWER BRACKET	2



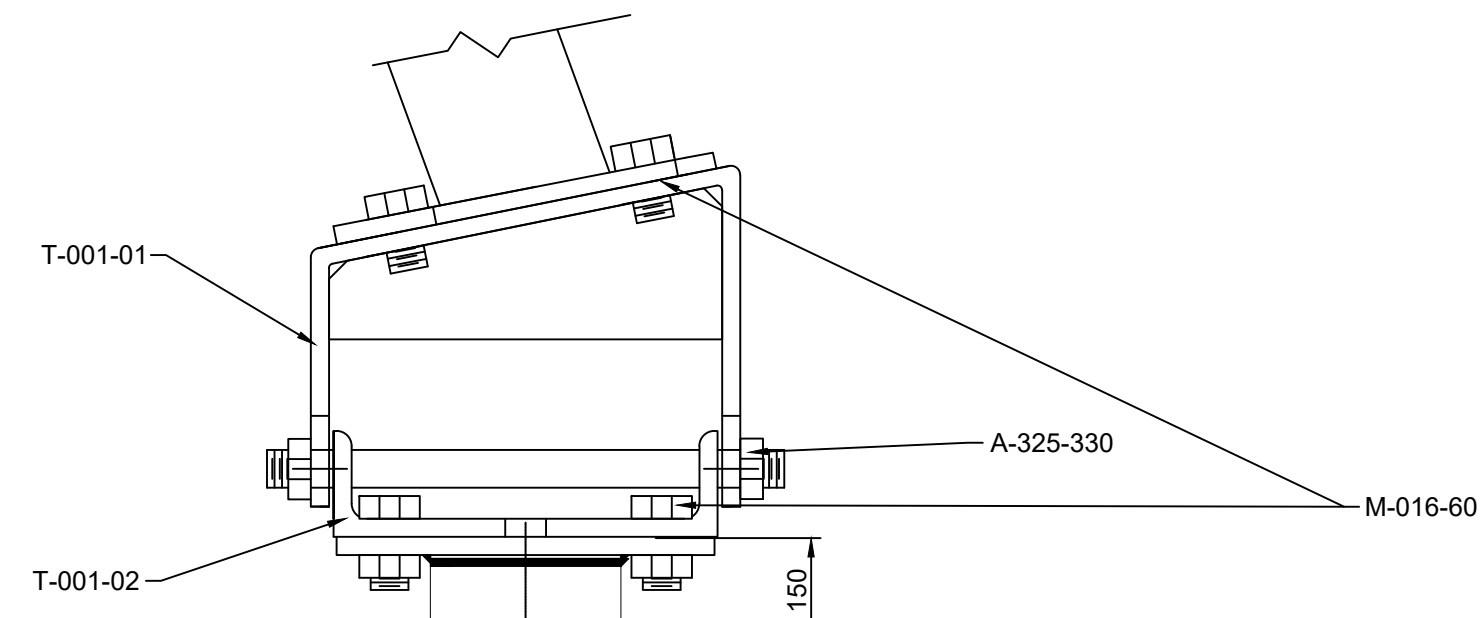
T-001-02 PLAN VIEW
SCALE 1:4



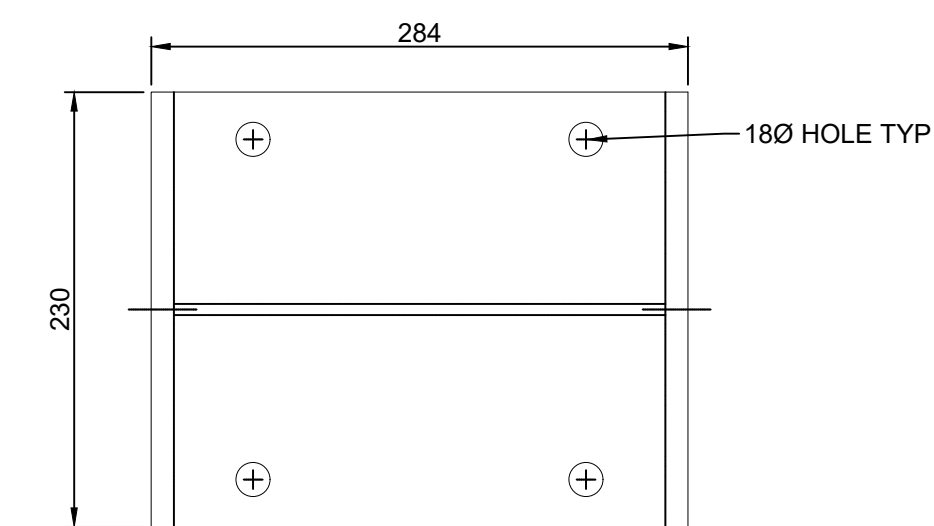
T-001-02 ELEVATION VIEW
SCALE 1:4



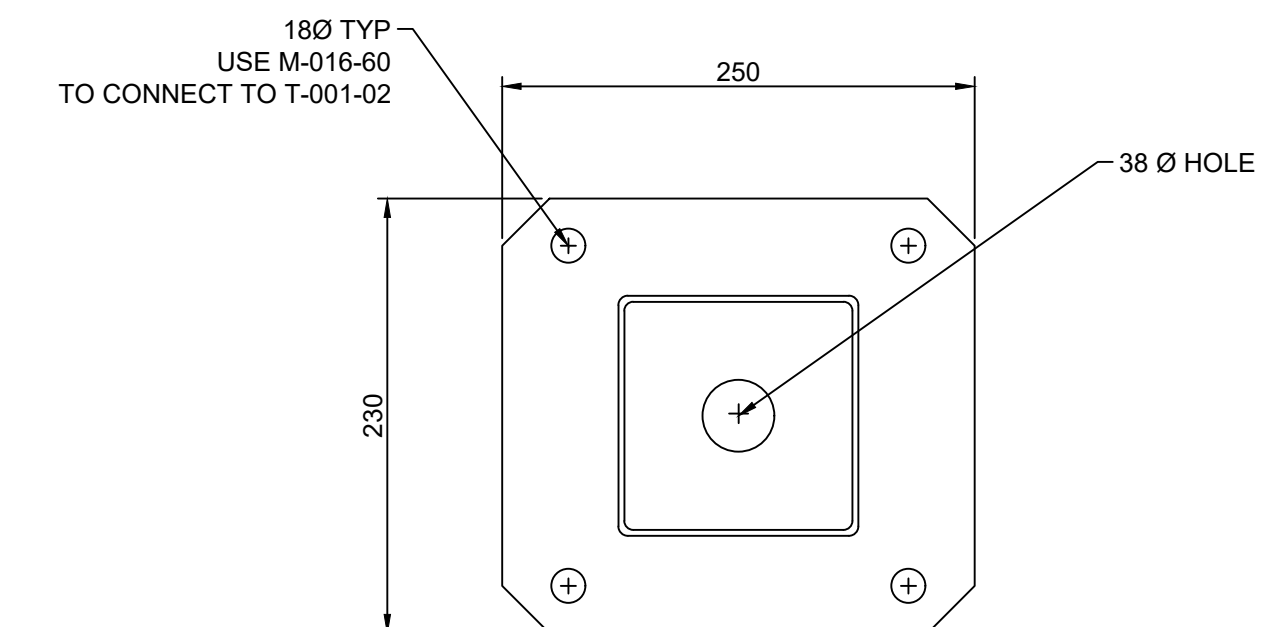
SOIL FOOTING ARRANGEMENT
SIDE VIEW
SCALE 1:5



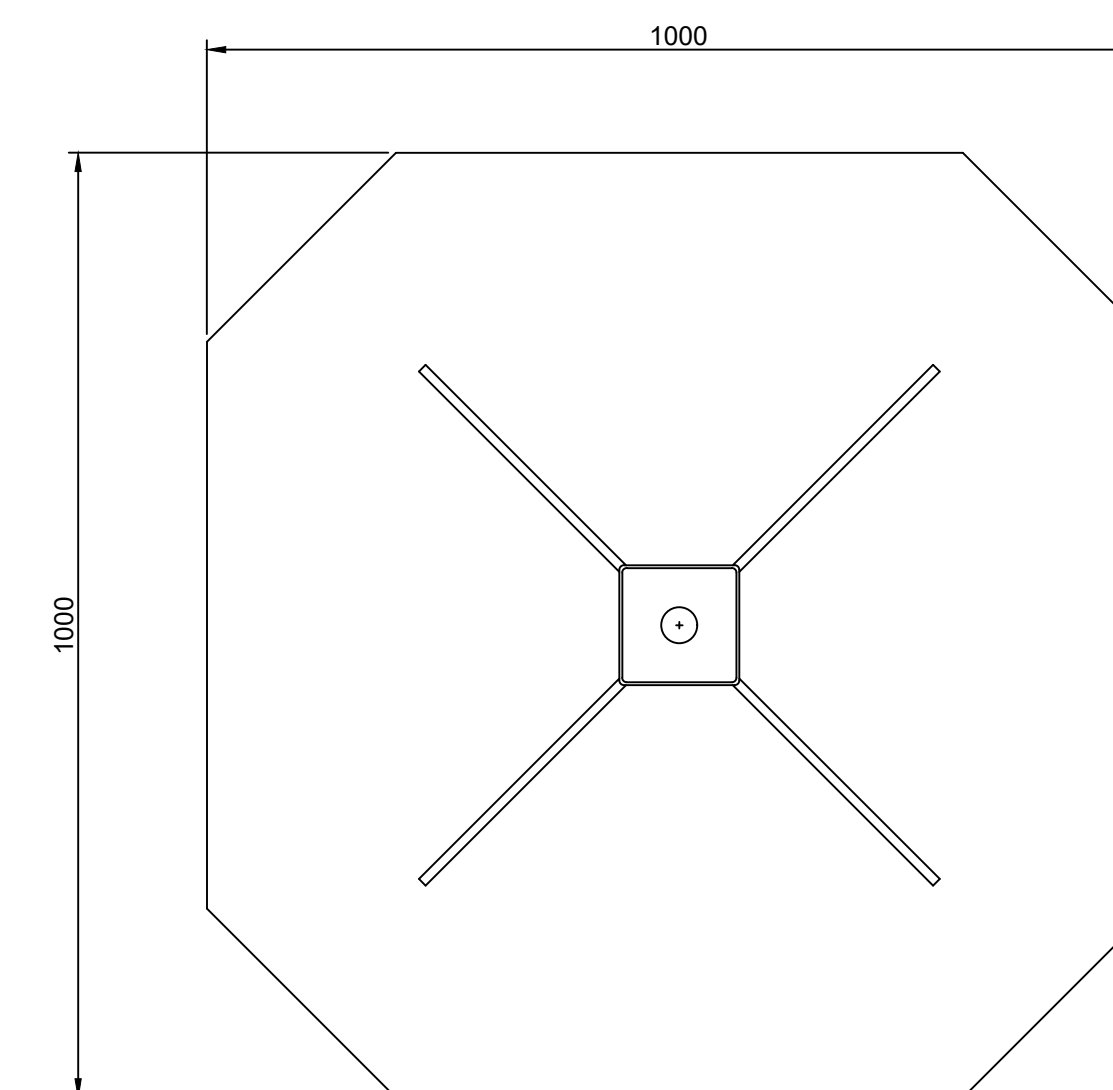
SOIL FOOTING ARRANGEMENT
FRONT VIEW
SCALE 1:5



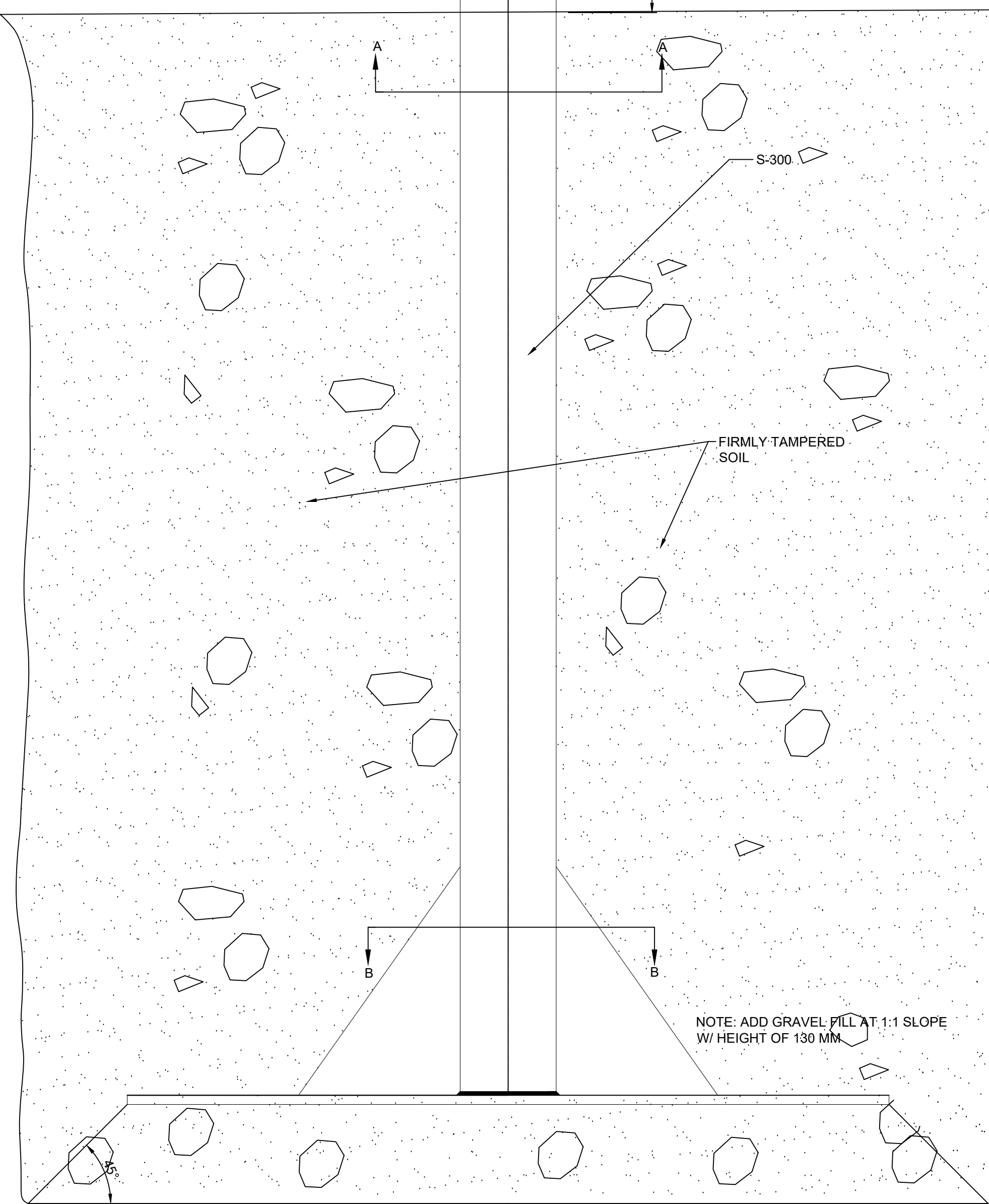
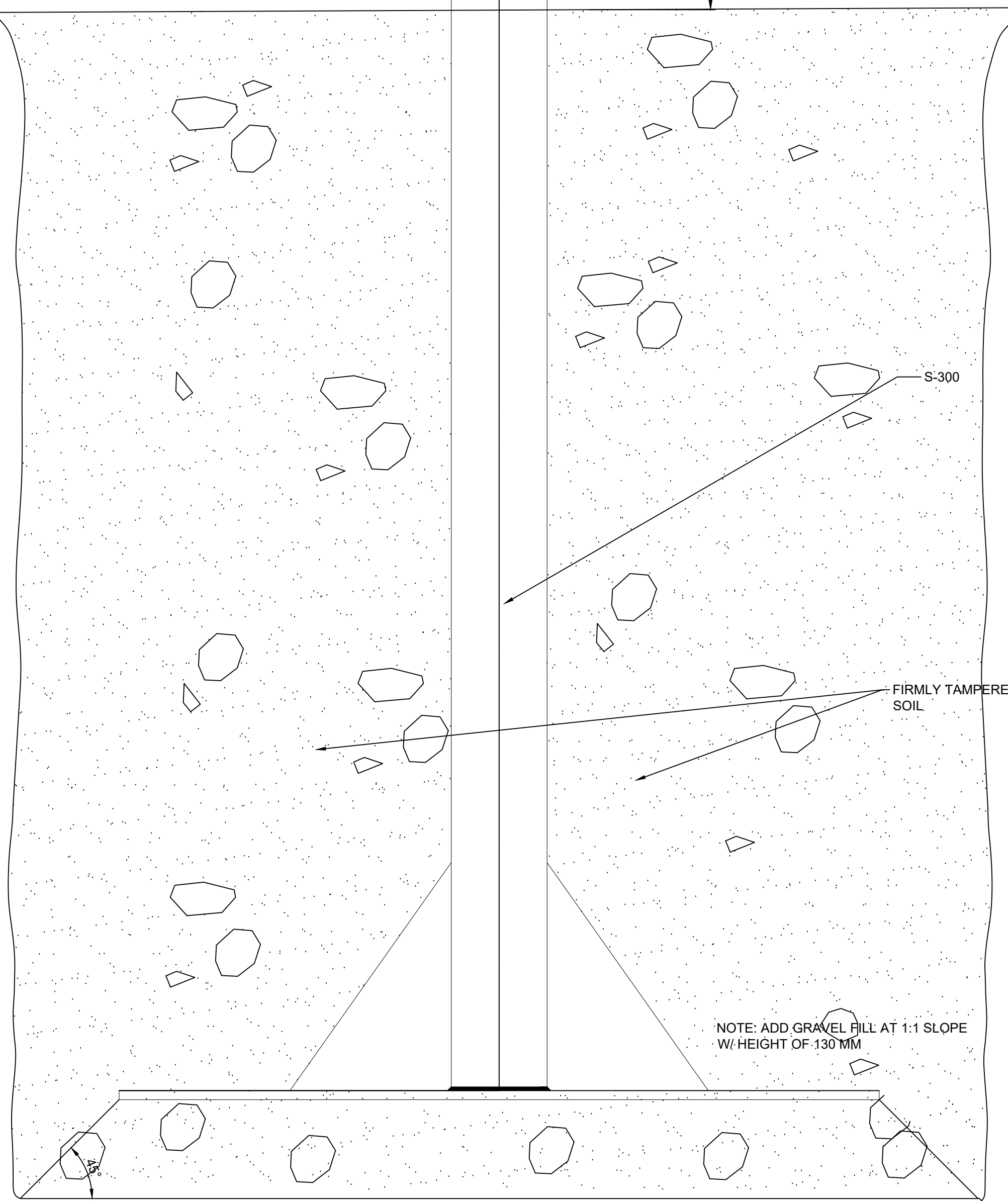
T-001-01 PLAN VIEW
SCALE 1:4



SECTION A-A
FOOTING TOP PLATE
SCALE 1:4



SECTION B-B
FOOTING BASE PLATE
SCALE 1:8



Revision	Description	Date
0	ISSUED FOR CONSTRUCTION	2020-02-09

Project: CABLEWAY UPGRADES & REPAIRS
Project: KLINAKLINI RIVER (08GE002)

Location: KLINAKLINI RIVER EAST CHANNEL (MAIN) NEAR THE MOUTH
Location: BRITISH COLUMBIA

Designed by: ECCC
Drawn by: ECCC
Approved by: ECCC
ECCC Project Manager
ECCC

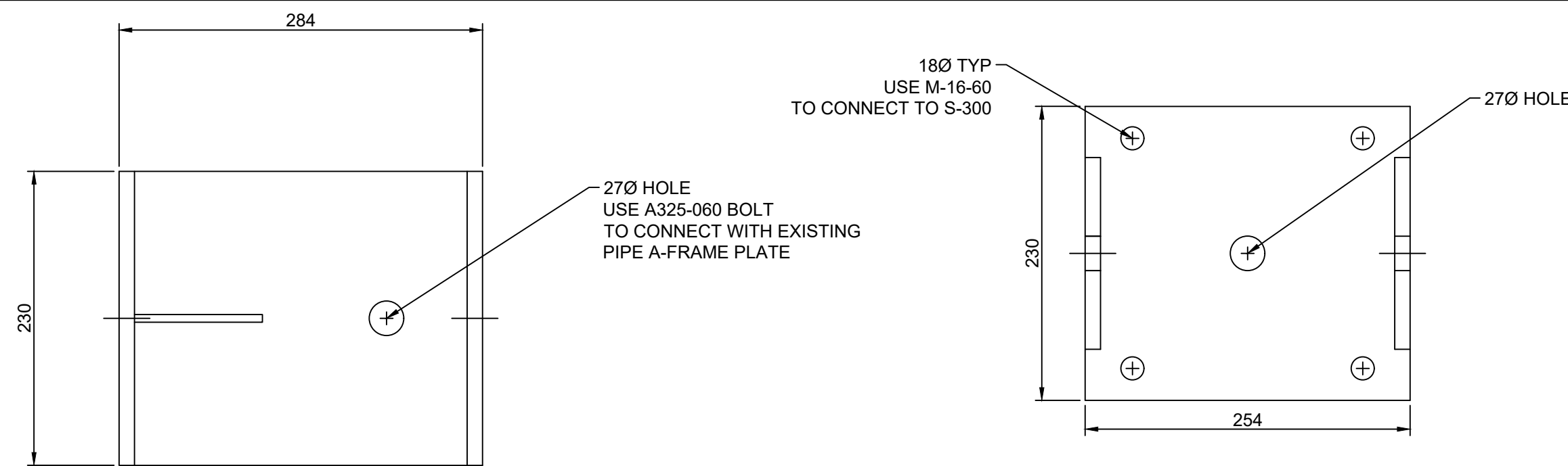
STEEL PIPE FOOTING
(1 OF 2)

Project no./No. du projet	Drawing no./No. du dessin	Revision no.
2021-09	DWG-06	0

FOR BIDDING PURPOSES

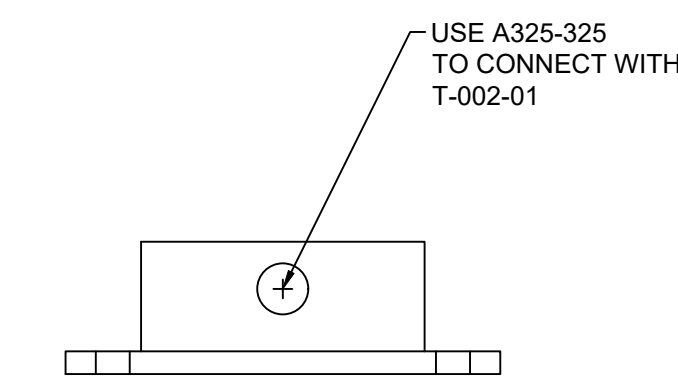
- NOTES:
- THIS DRAWING REFERS TO THE LEFT BANK HOME SIDE FOOTINGS AND COMPONENTS
 - ALL DIMENSION IN MILLIMETERS UNLESS STATED OTHERWISE
 - ENVIRONMENT AND CLIMATE CHANGE CANADA WILL PROVIDE ALL ITEMS LISTED IN TABLE 3
 - CONTRACTOR TO VERIFY ALL DIMENSIONS PRIOR TO START OF WORK
 - NUTS AND BOLTS IN DWG-07 ARE N.T.S
 - ALL ITEMS SHOWN ARE NEW U.N.O
 - CONTRACTOR RESPONSIBLE FOR SPARE PARTS REQUIRED TO REPLACE DAMAGED DURING CONSTRUCTION PARTS
 - CONTRACTOR RESPONSIBLE TO PROVIDE ALL WORK/EQUIPMENT REQUIRED TO HAVE FUNCTIONAL FOOTINGS AS INTENDED IN THIS PROJECT

TABLE 3: STEEL PIPE FOOTING AND FOOTING MATERIALS		
ID #	DESCRIPTION	QUANTITY
A-325-060	A325 25X60 BOLT C/W NUT	2
A-325-325	A325 25X325 BOLT C/W NUT	2
M-016-60	M16X60 BOLTS C/W NUT AND WASHER	8
S-300	STEEL FOOTING W/ TOP AND BASE PLATES	2
T-002-01	TYPE TWO FOOT PIECE UPPER BRACKET	2
T-002-02	TYPE TWO FOOT PIECE LOWER BRACKET	2

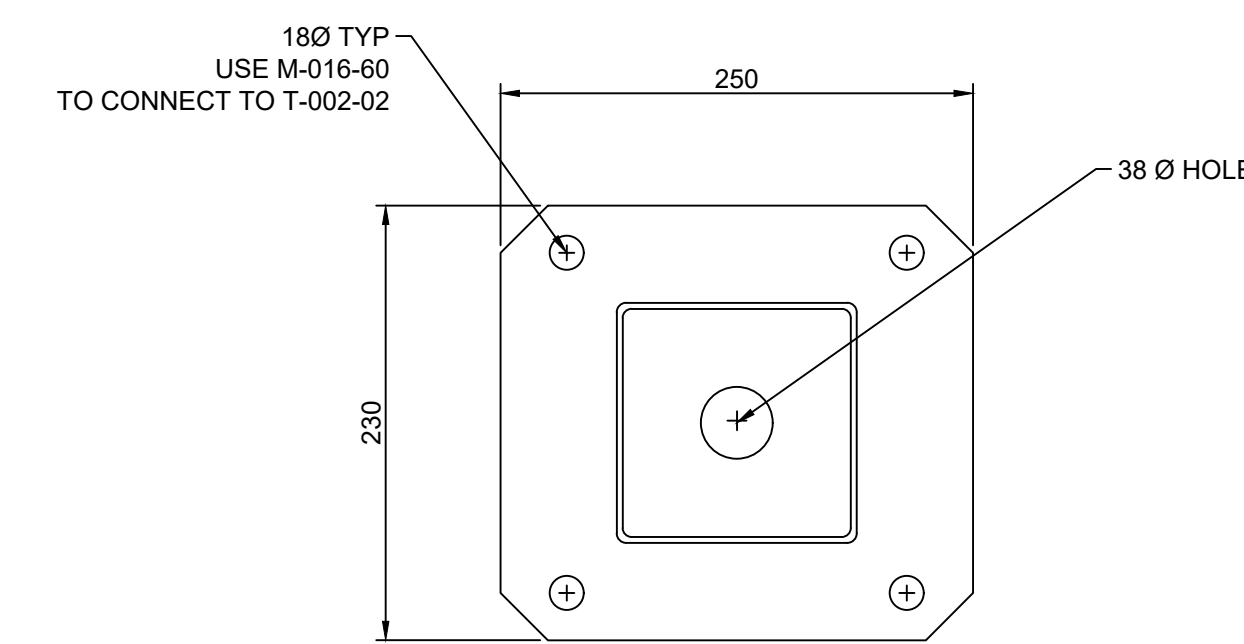


T-002-01 PLAN VIEW
SCALE 1:4

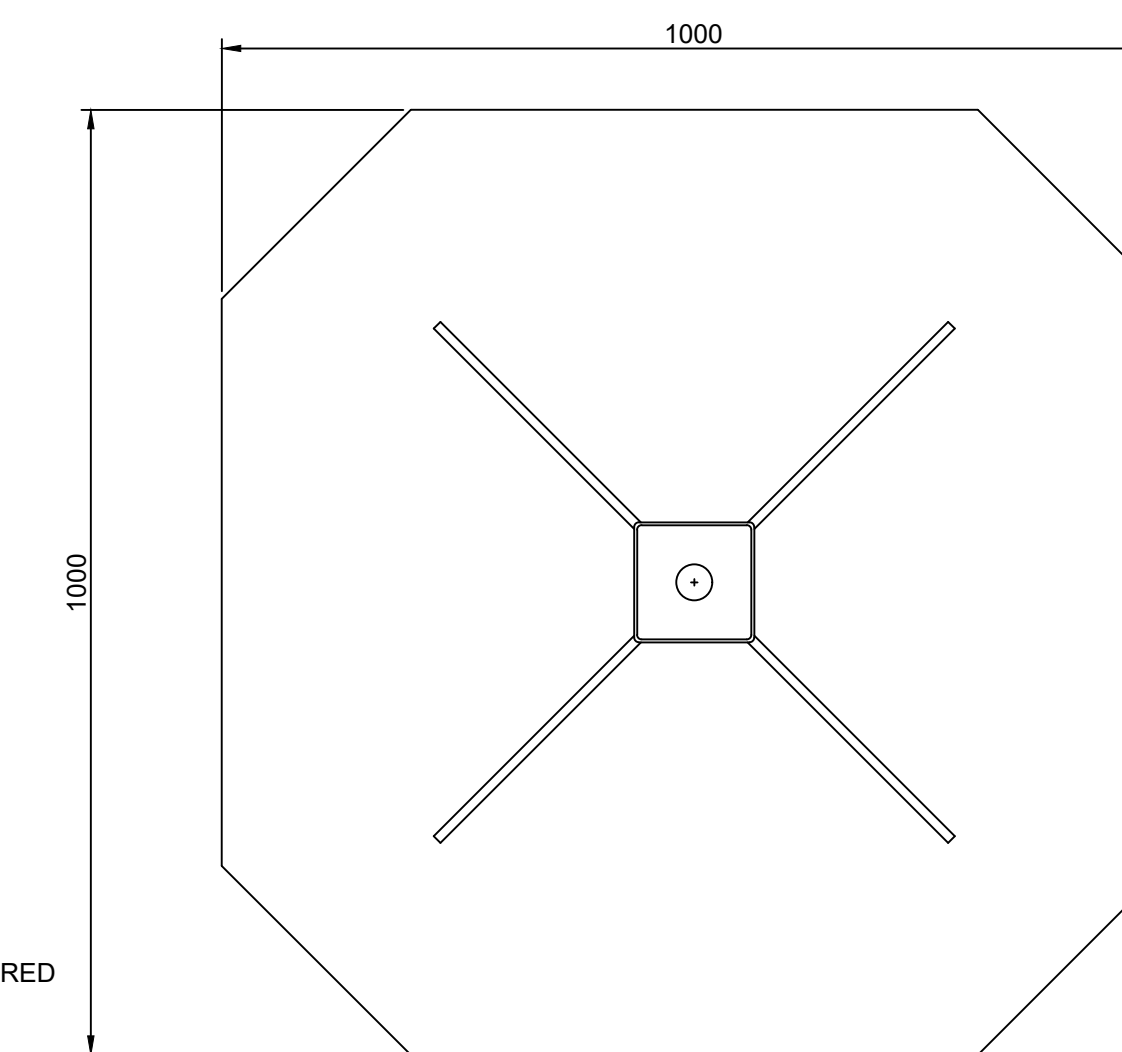
T-002-02 PLAN VIEW
SCALE 1:4



T-002-02 ELEVATION VIEW
SCALE 1:4



SECTION A-A FOOTING TOP PLATE
SCALE 1:4



SECTION B-B FOOTING BASE PLATE
SCALE 1:8

Revision	Description	Date
0	ISSUED FOR CONSTRUCTION	2020-02-09

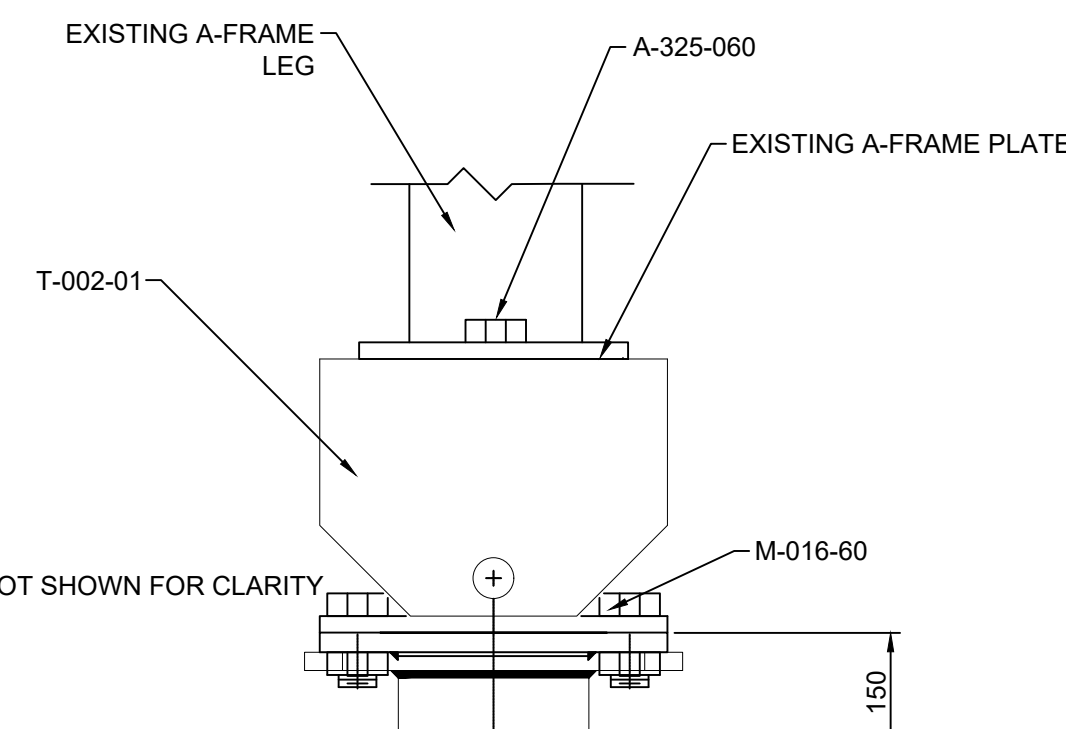
Project: CABLEWAY UPGRADES & REPAIRS
KLINAKLINI RIVER (08GE002)

Location: KLINAKLINI RIVER EAST CHANNEL (MAIN) NEAR THE MOUTH
BRITISH COLUMBIA

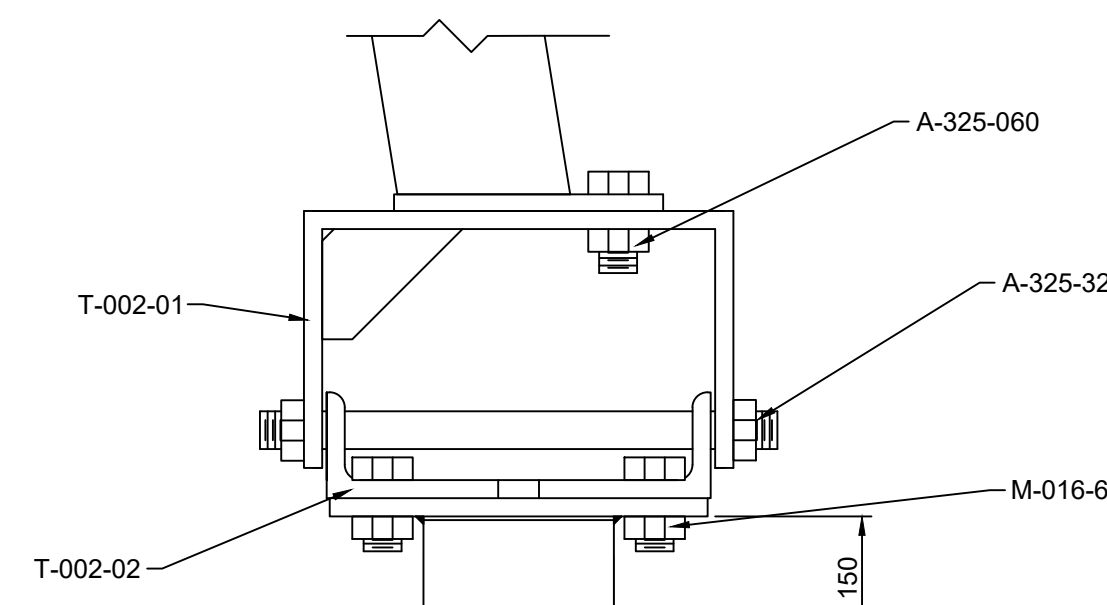
Designed by: ECCC
Drawn by: ECCC
Approved by: ECCC
ECCC Project Manager: ECCC

STEEL PIPE FOOTING (2 OF 2)

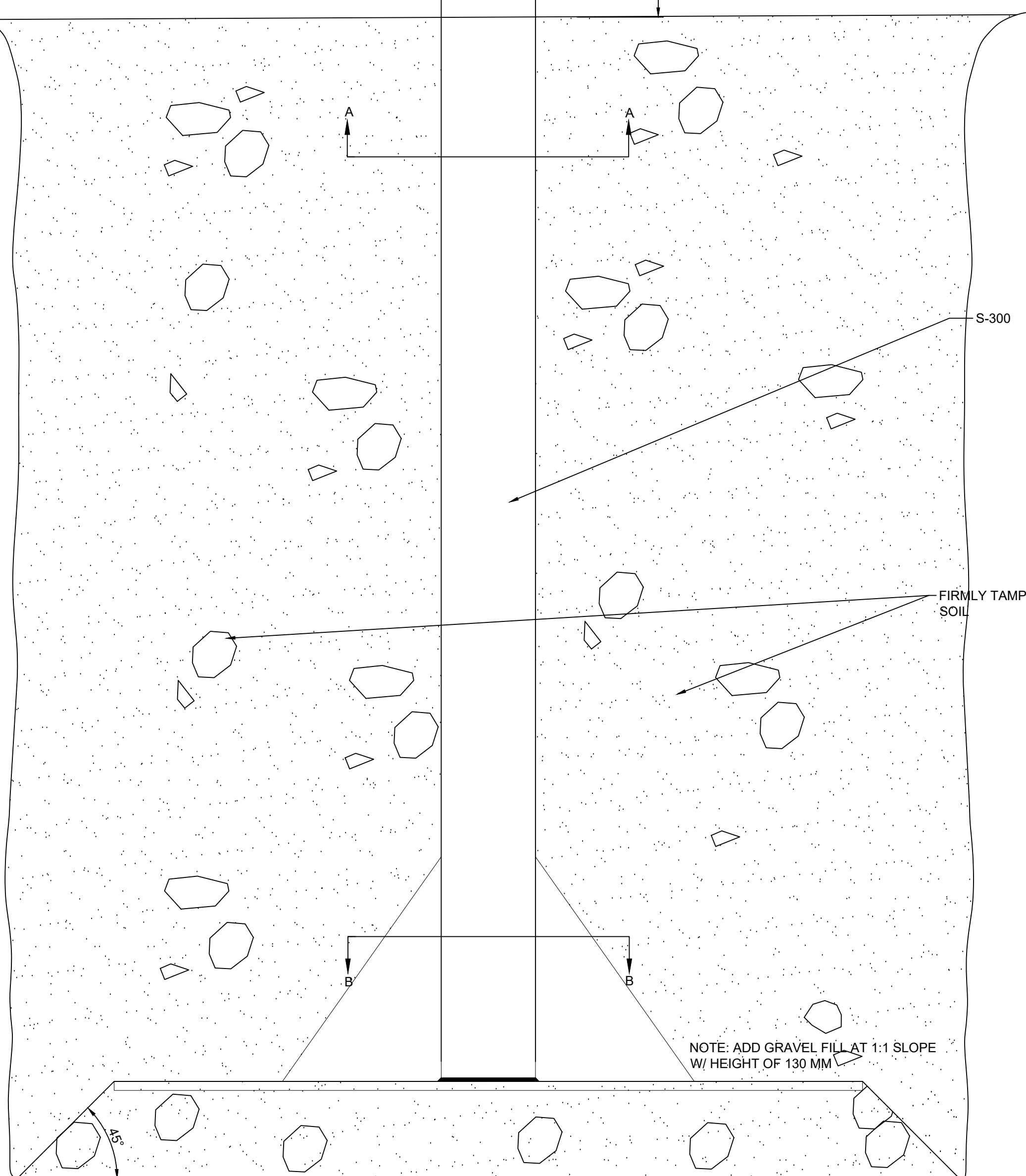
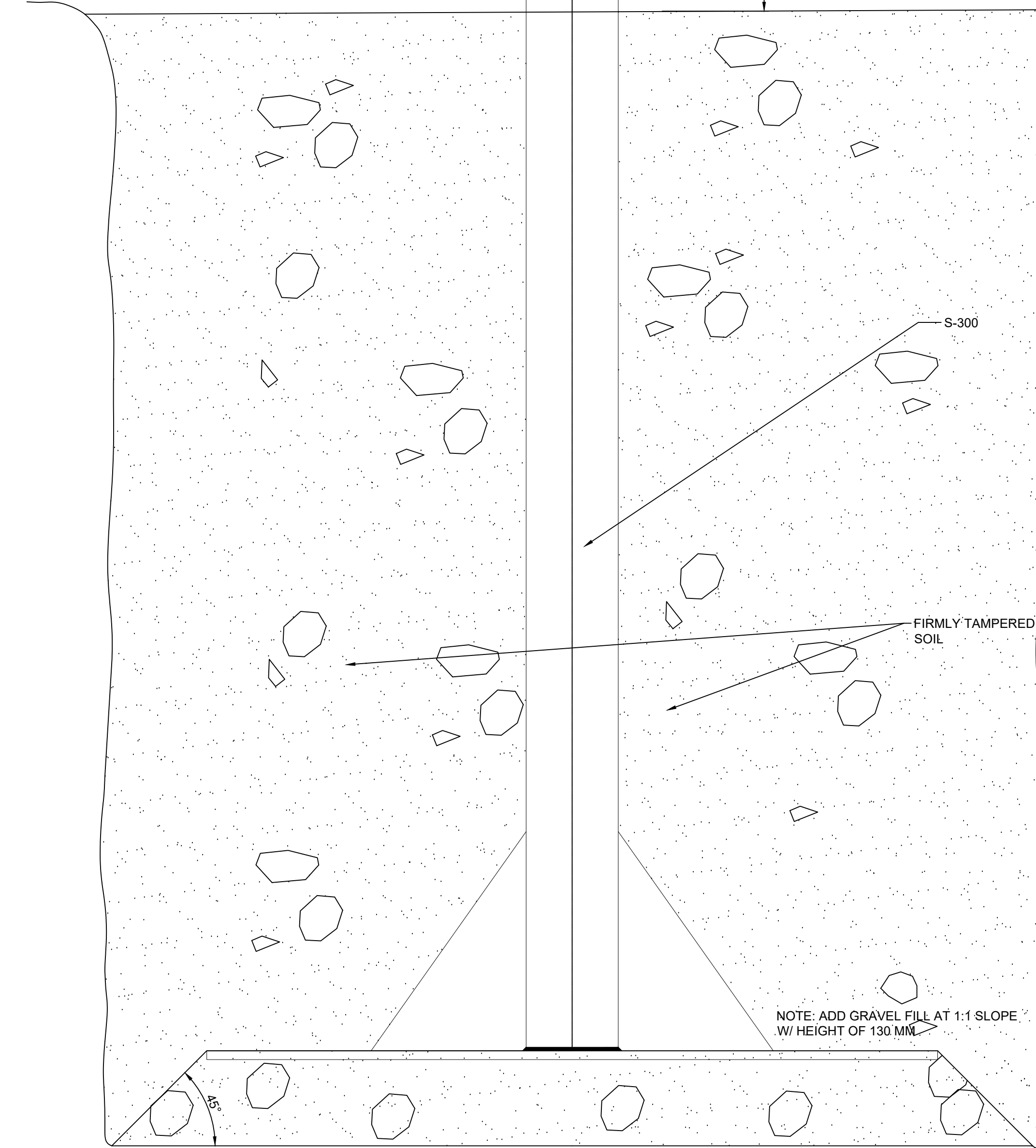
Project no./No. du projet	Drawing no./No. du dessin	Revision no.
2021-09	DWG-07	0



SOIL FOOTING ARRANGEMENT SIDE VIEW
SCALE 1:5



SOIL FOOTING ARRANGEMENT FRONT VIEW
SCALE 1:5



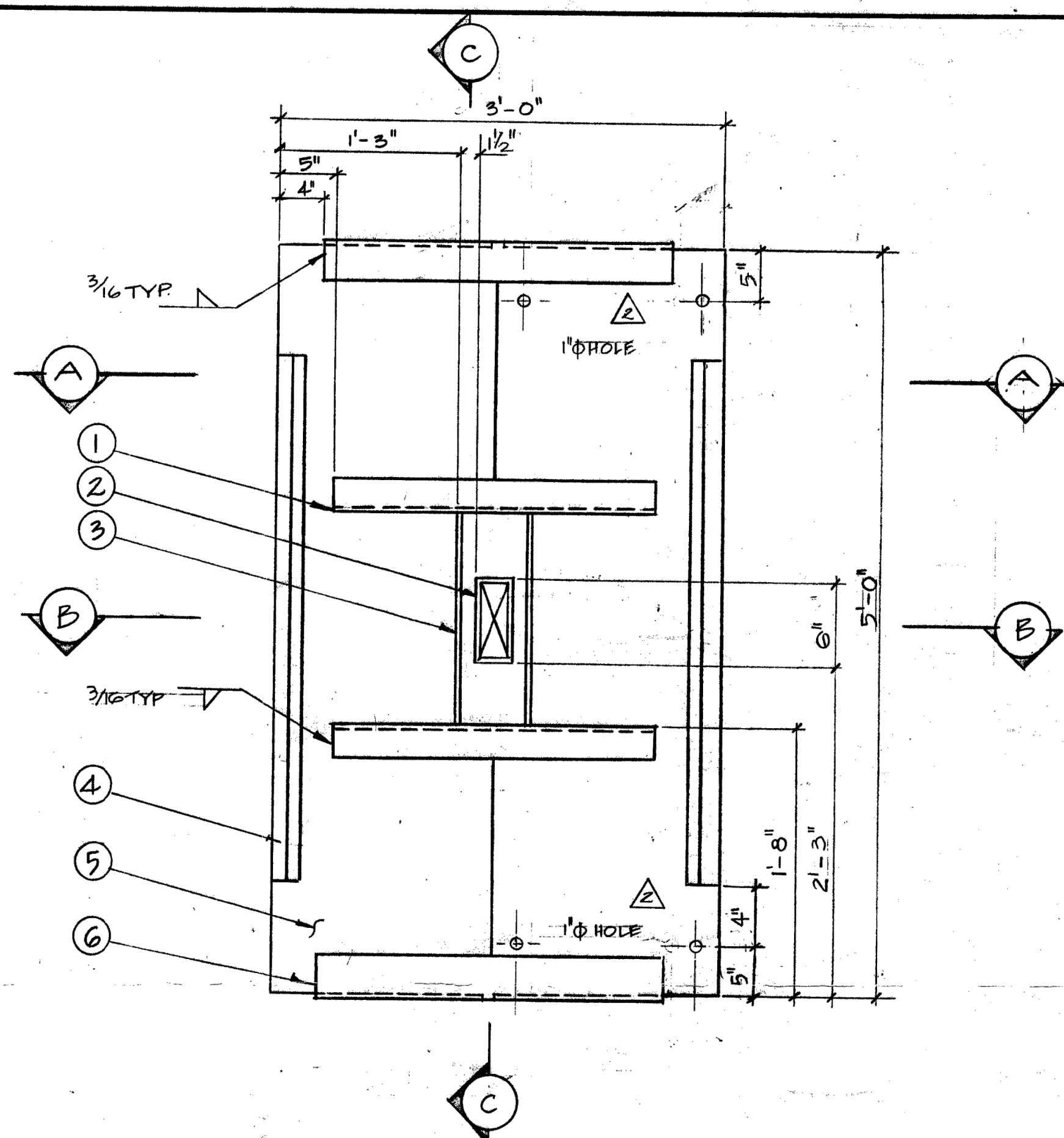
NOTE: ADD GRAVEL FILL AT 1:1 SLOPE W/ HEIGHT OF 130 MM

NOTE: ADD GRAVEL FILL AT 1:1 SLOPE W/ HEIGHT OF 130 MM

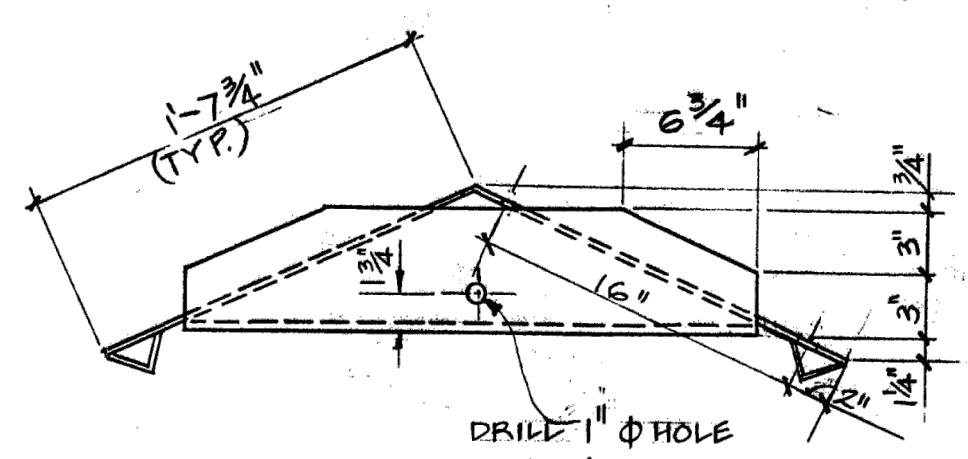
2812-R3

35-2812-R2
35-2812-R2

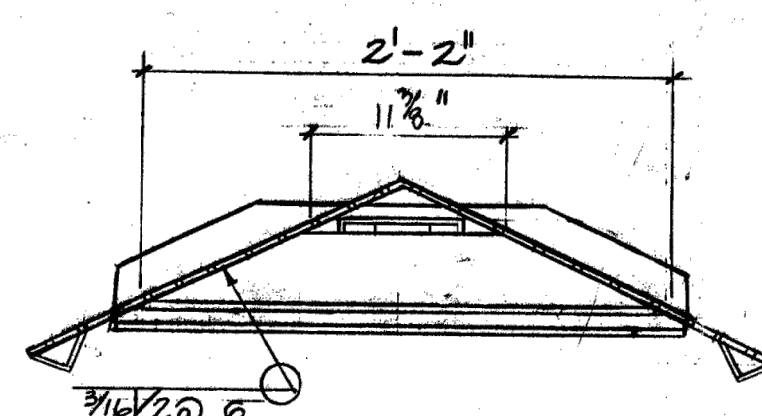
FOR BIDDING PURPOSES



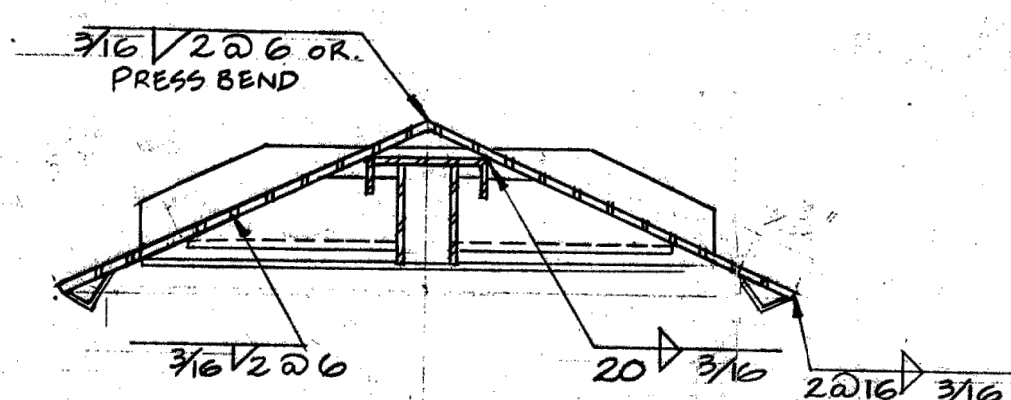
UNDERSIDE



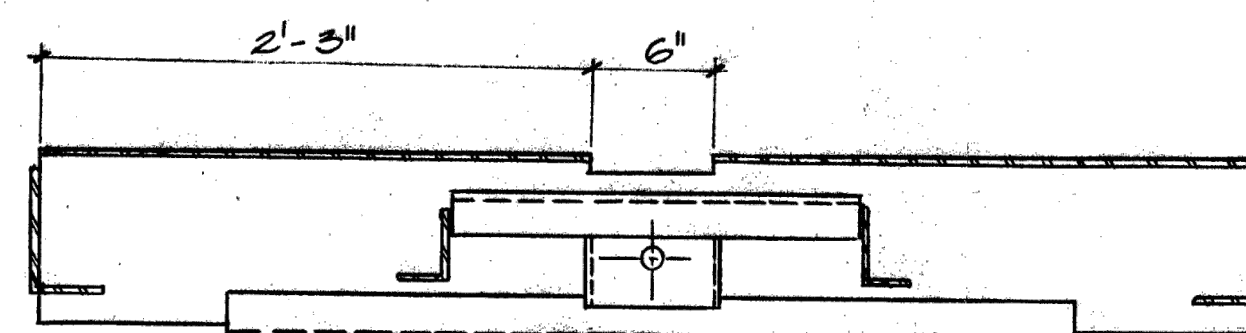
END



SECTION A-A

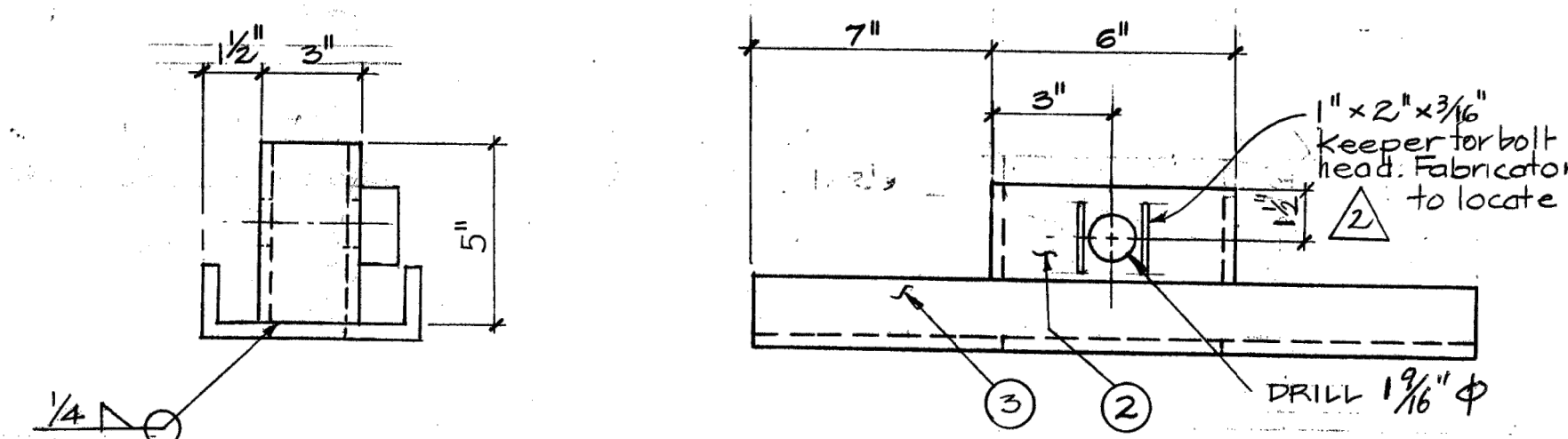


SECTION B-B

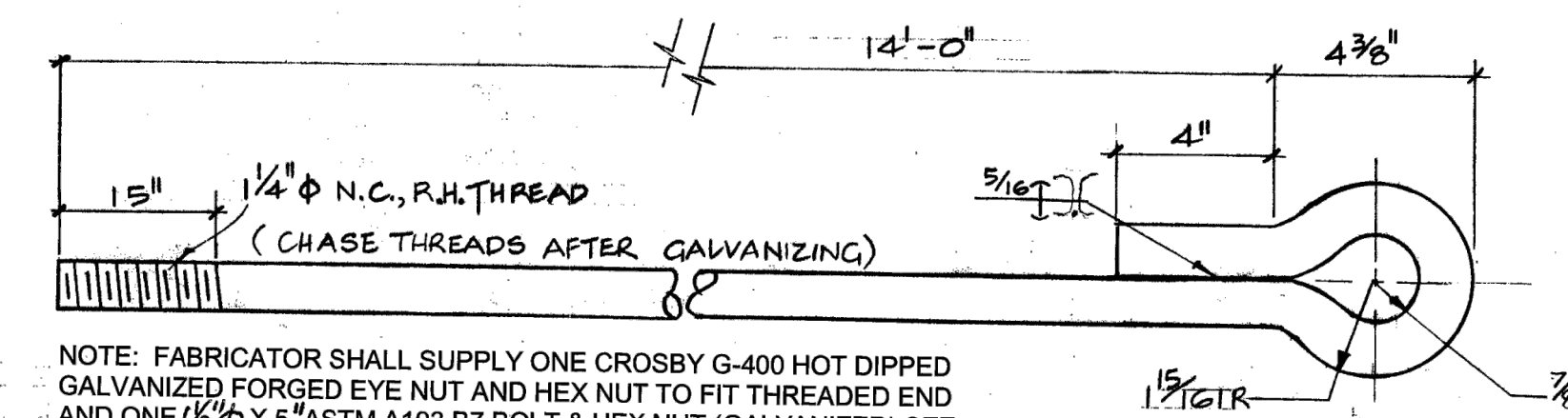


SECTION C-C

* NOTE
ALL SECTION CUTS
TAKEN THROUGH TOP
SIDE OF ANCHOR



DETAIL 1
SCALE: 1/4" SIZE



DETAIL 2
SCALE: 1/4" SIZE

NOTE: FABRICATOR SHALL SUPPLY ONE CROSBY G-400 HOT DIPPED GALVANIZED FORGED EYE NUT AND HEX NUT TO FIT THREADED END AND ONE 1/2" x 5" ASTM A193 B7 BOLT & HEX NUT (GALVANIZED) SEE NOTE 4

BILL OF MATERIALS		
ITEM	QUANTITY	DESCRIPTION
1	2	3/16" x 2 1/2" x 1/4" ANGLE 2'-2" LONG
2	1	6" x 6" x 3/8" RECTANGULAR TUBE SECTION SEE DETAIL 1
3	1	STANDARD C6X13 CHANNEL, 1'-8" LONG
4	2	2" x 2" x 1/4" ANGLE, 3'-6" LONG
5	2	3/16" PL, 1'-7 3/4" x 3'-0"
6	2	6" x 3 1/2" x 1/4" ANGLE, 2'-4" LONG
7	1	1/4" PH ROD SEE DETAIL 2
8	1	1/2" PH x 5" BOLT (SEE NOTE 4) & NUT

GENERAL NOTES

- ALL PARTS TO BE GALVANIZED AFTER FABRICATION.
- ANCHOR PLATE TO BE G40.12-44W STEEL, ANCHOR ROD TO BE CSA G40.21-44W OR EQUIVALENT.
- ALL WELDS TO USE E70 XX ELECTRODES
- USE ASTM A193 B7 BOLT CONNECTOR (1/2" x 5") FOR ROD TO PL.

Dwg. No.	Title	Dwg. No.	Title	No.	Remarks	By	Date	Chk'd.	App.	Drawing	By	Date	Checked	Date	Approved	Date
					GENERAL NOTES NO. 2 CHANGED TO G40.21-44W 22 JAN 80											
					3/16" 1" HOLE WAS 3/16" x 1 1/2" DIMENSION WAS 2 1/4" TWO 1" Holes ADDED	V.L.	JUNE 79			Survey						
					ANGLES & PLATES REVISED	E.B.	AP 78			Design	P.M.	FEB 76				
										Drawing		FEB 76				
										Tracing	V.L.	MAR 78				

DEPT. OF THE ENVIRONMENT
WATER SURVEY OF CANADA, VANCOUVER, B.C.

STEEL ANCHOR PLATE
CABLEWAYS
FABRICATION DETAILS

Scale 1/8" = 1'-0" EXCEPT AS NOTED

Sheet 1 of 1

Station No.

Dwg. No. 2812-R3 2812-R2

Destroy all prints bearing previous number

CABLEWAY UPGRADES & REPAIRS
KLINAKLINI RIVER
(08GE002)

KLINAKLINI RIVER EAST CHANNEL (MAIN) NEAR THE MOUTH
BRITISH COLUMBIA

Designed by ECCC
Drawn by ECCC
Approved by ECCC
ECCC Project Manager
ECCC

STEEL PLATE ANCHOR (14')
DETAILS