

**Bidder's Meeting
for
Soil Treatment Facility Operation (5 Sites)
Multiple Locations, Alaska Highway
BC and YT**

Client: Public Services and Procurement Canada

Consultant: SLR Consulting (Canada) Ltd.

Project No: R.018391.014.015

Date: June 1, 2021

Time: 10:00 am (PST)

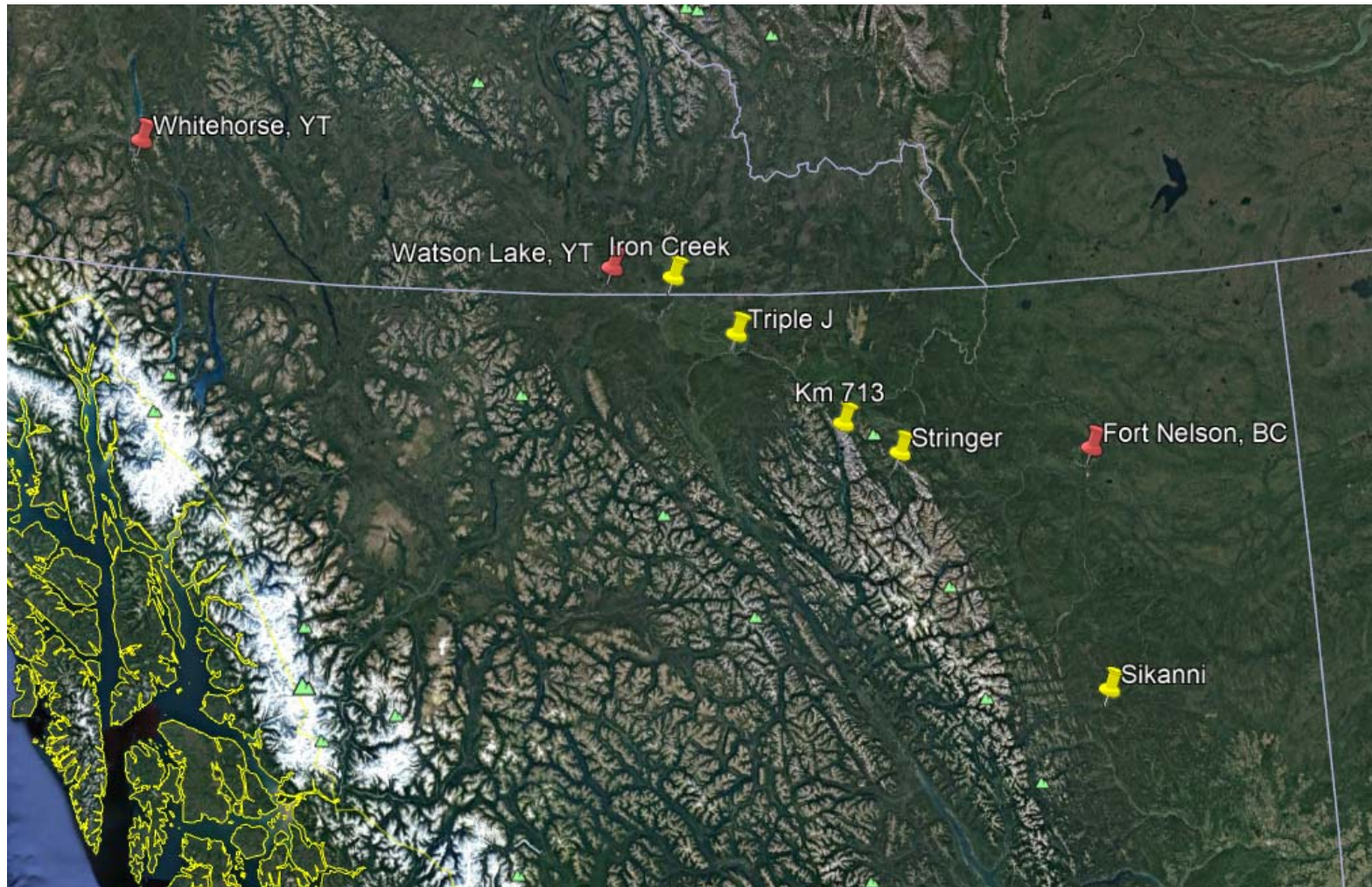
Presentation Summary

- Site Locations and Layouts
 - Site Maps
 - Photographs
- Scope of Work
 - Sequence of Operations
- Unit Price Table
 - Base Work (A)
 - Optional Work (B)

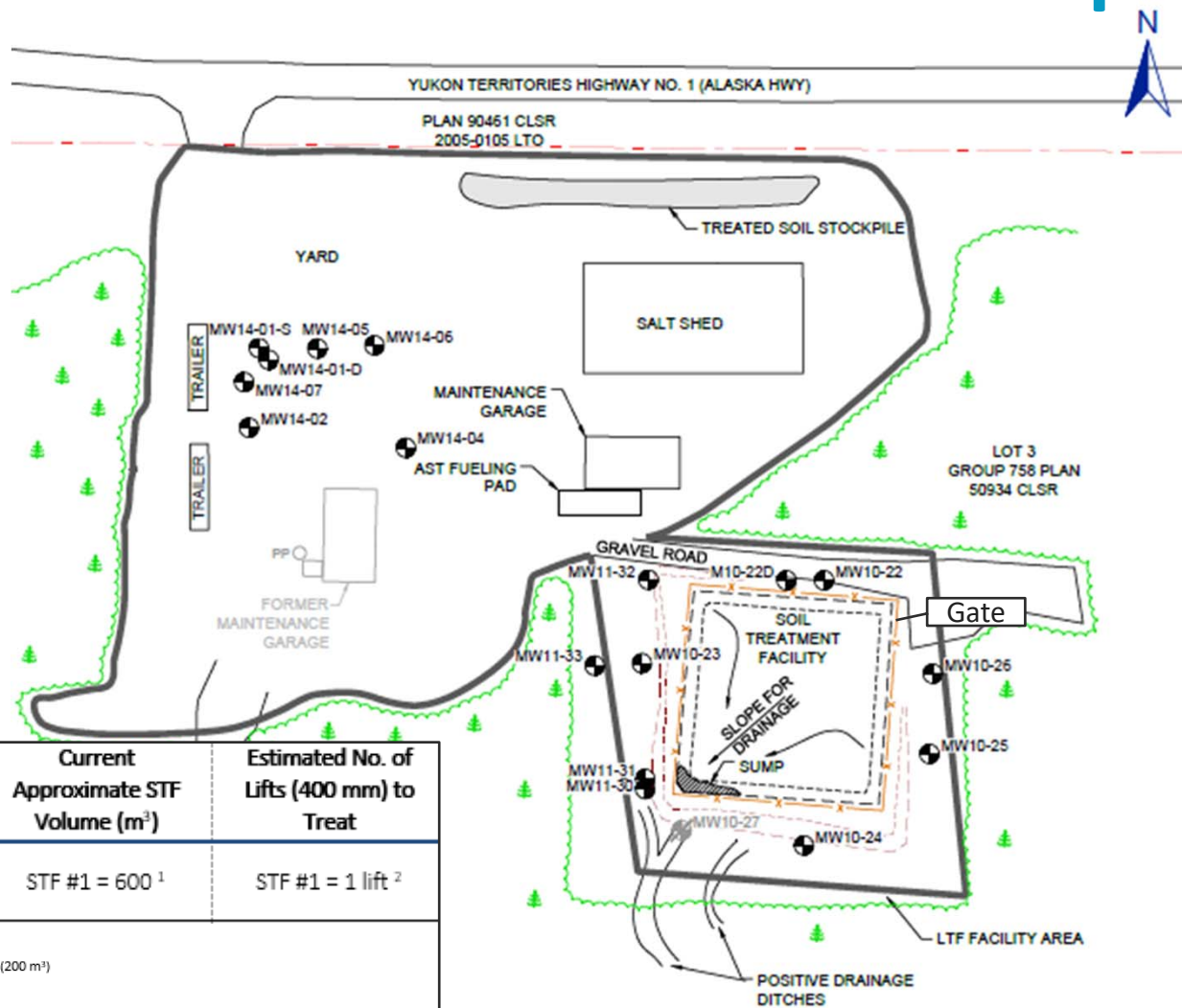
Alaska Highway STF 5 Sites

- Iron Creek Maintenance Camp (ICMC)
 - Located at km 922, Iron Creek, YT
- JJJ (“Triple J”) Gravel Pit
 - Located at km 835, approximately 4 km south of Fireside, BC
- KM713 Gravel Pit
 - Located at km 713, approximately 15 km north of Muncho Lake, BC
- Stringer
 - Located at km 639, Toad River, BC
- Sikanni Maintenance Camp (Sikanni)
 - Located at km 254, Sikanni, BC

Alaska Highway STF Sites

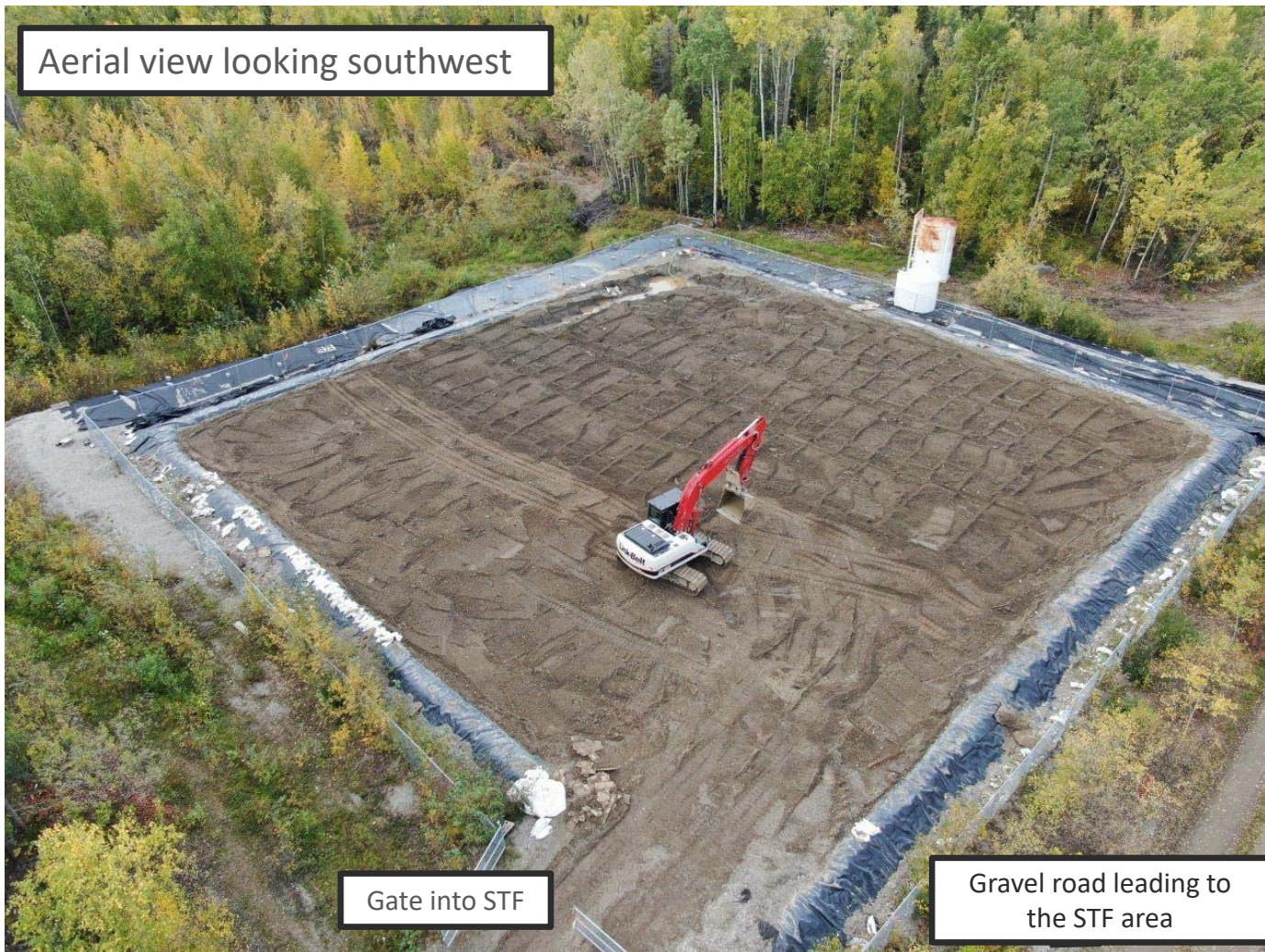


Iron Creek Maintenance Camp



STF Inside Dimensions (Approximate L x W)	Current Approximate STF Volume (m ³)	Estimated No. of Lifts (400 mm) to Treat
STF #1 = 25 m x 35 m	STF #1 = 600 ¹	STF #1 = 1 lift ²
Notes: 1 – includes final lift (400 m ³) and sand layer (200 m ³) 2 – sand layer not counted as a lift		

Iron Creek Maintenance Camp



Aerial view looking southwest

Gate into STF

Gravel road leading to the STF area

Iron Creek Maintenance Camp

View looking south from the northeast corner of the STF



Gate into STF

Iron Creek Maintenance Camp

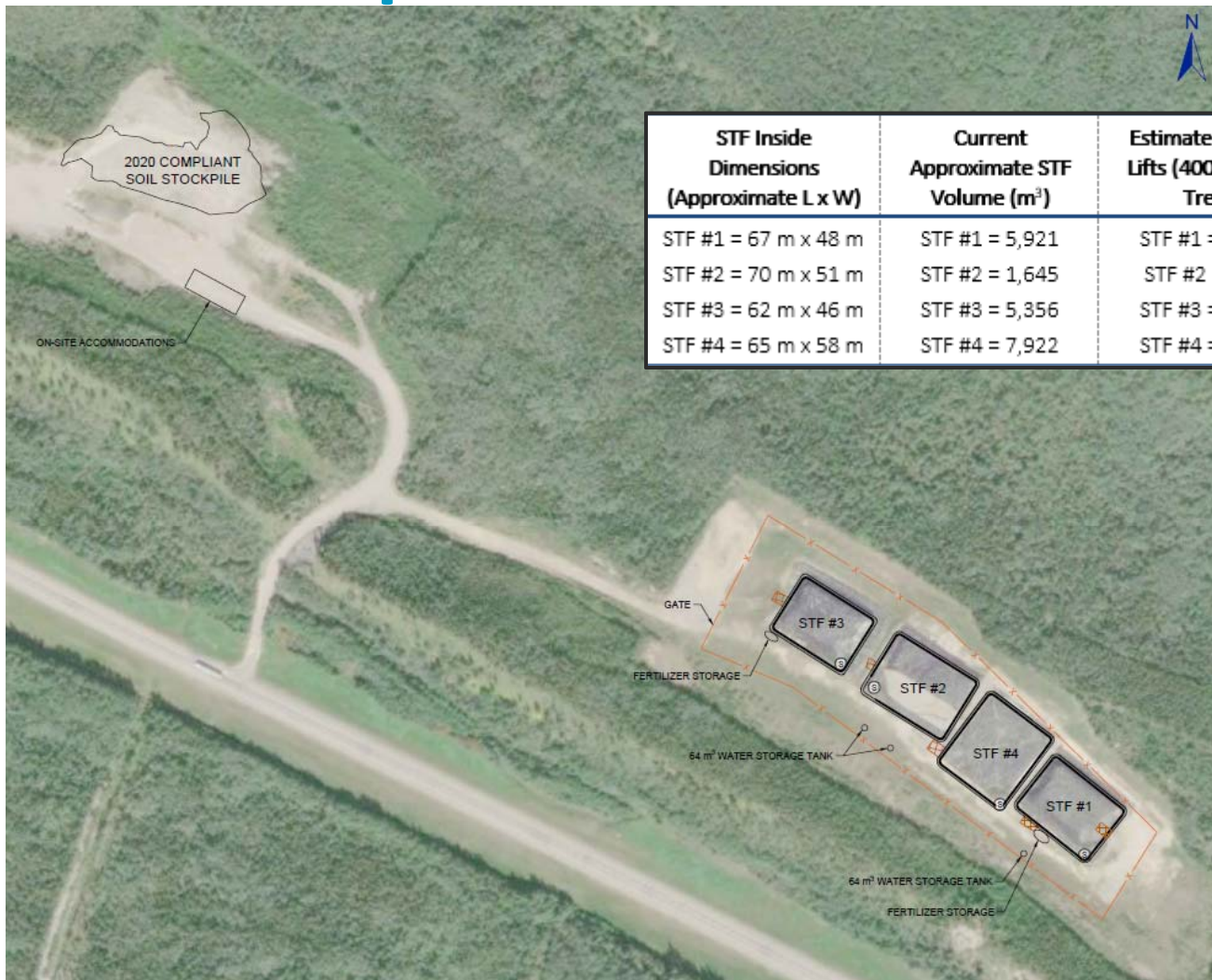
View looking southwest
from the northeast
corner of the STF



Iron Creek Maintenance Camp



Triple J Gravel Pit



STF Inside Dimensions (Approximate L x W)	Current Approximate STF Volume (m ³)	Estimated No. of Lifts (400 mm) to Treat
STF #1 = 67 m x 48 m	STF #1 = 5,921	STF #1 = 5 lifts
STF #2 = 70 m x 51 m	STF #2 = 1,645	STF #2 = 1 lift
STF #3 = 62 m x 46 m	STF #3 = 5,356	STF #3 = 4 lifts
STF #4 = 65 m x 58 m	STF #4 = 7,922	STF #4 = 6 lifts

Triple J Gravel Pit



Aerial view of STFs
looking northeast

Triple J Gravel Pit

View of STF #1 looking east
from eastern side of STF #1



Triple J Gravel Pit

View of STF #3 looking west from STF #2

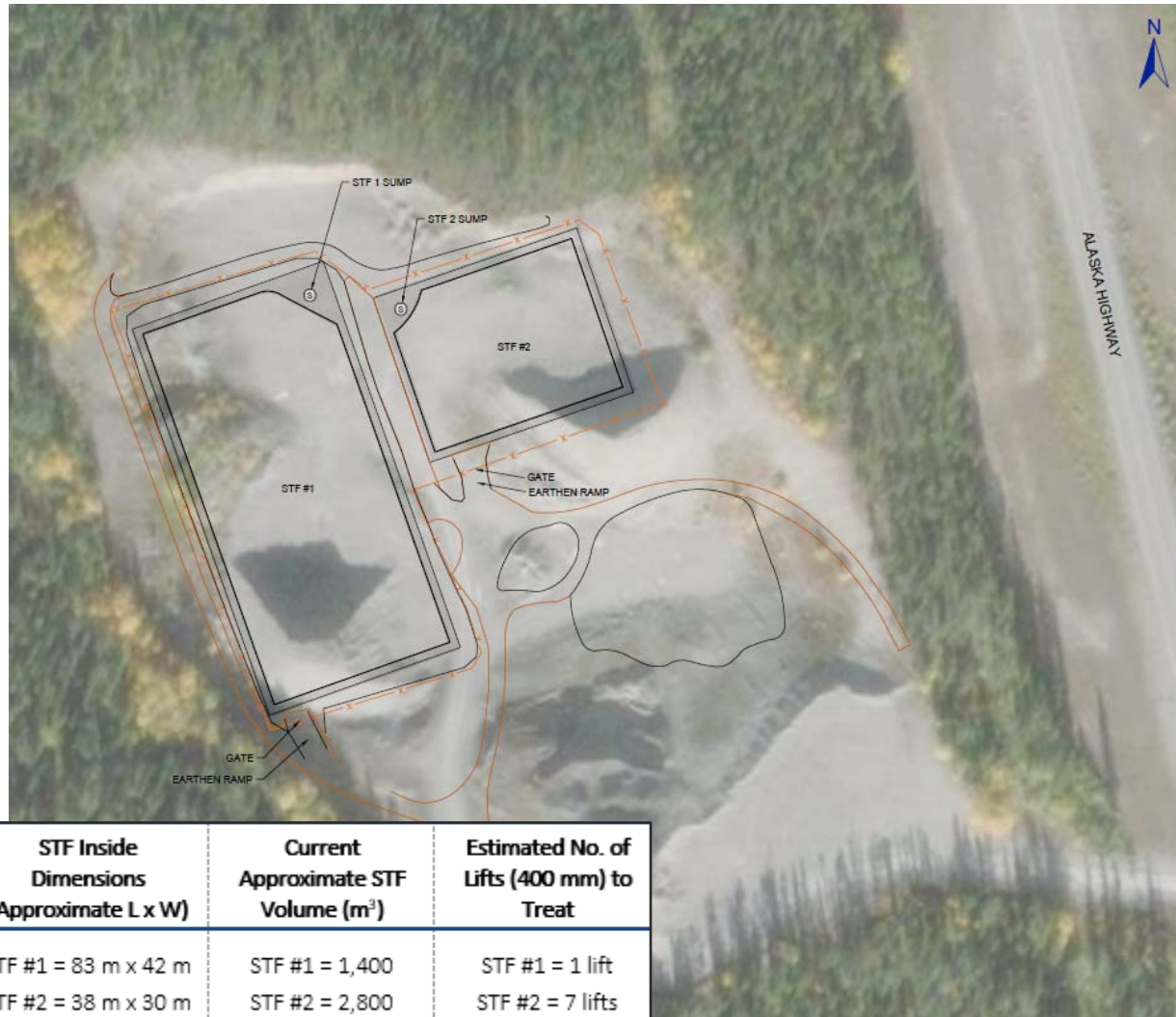


Triple J Gravel Pit

View of STF #3 looking east
from the eastern side of STF #3



KM713 Gravel Pit



STF Inside Dimensions (Approximate L x W)	Current Approximate STF Volume (m ³)	Estimated No. of Lifts (400 mm) to Treat
STF #1 = 83 m x 42 m	STF #1 = 1,400	STF #1 = 1 lift
STF #2 = 38 m x 30 m	STF #2 = 2,800	STF #2 = 7 lifts

KM713 Gravel Pit



Aerial view of STFs looking northeast

KM713 Gravel Pit

View of STF #1
looking northwest



KM713 Gravel Pit

View of STF #2
looking west



Stringer



STF Inside Dimensions (Approximate L x W)	Current Approximate STF Volume (m ³)	Estimated No. of Lifts (400 mm) to Treat
STF #1 = 48 m x 46 m	STF #1 = 3,500	STF #1 = 4 lifts

Stringer

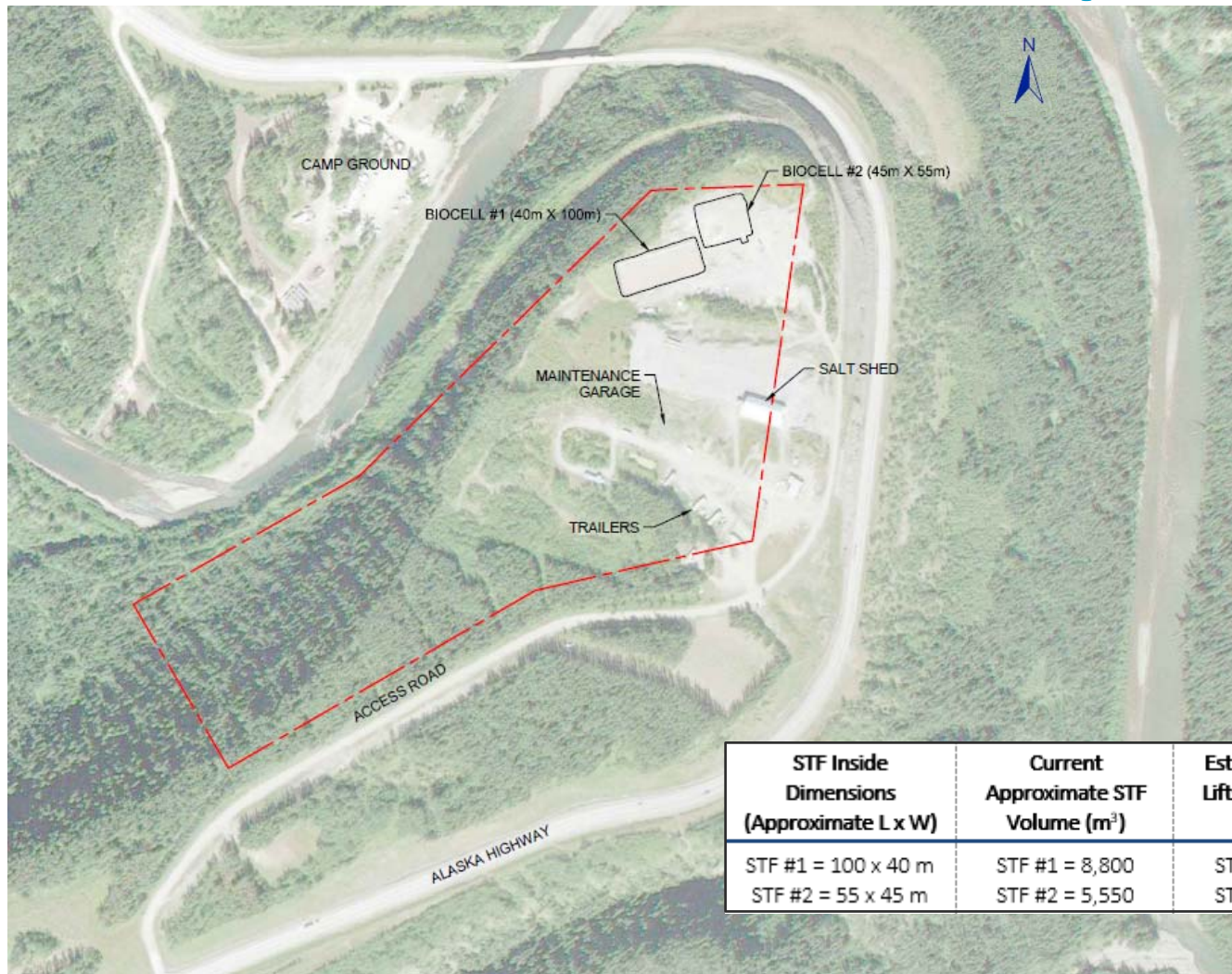


Stringer

View of STF looking southeast



Sikanni Maintenance Camp



Sikanni Maintenance Camp



View of STF #1
looking west,
prior to 2020

Sikanni Maintenance Camp

View of STF #2
looking north,
prior to 2020



Sikanni Maintenance Camp

View of the
STFs looking
west in 2020



Scope of Work

- Scope of Work including Annex B Memo – FY 2021/2022 Soil Treatment Facility Data and Proposed Sequencing of Operations
 - Remove liner from each STF
 - Turn soil while adding fertilizer
 - Contaminated water treatment offsite – provision and operation
 - Assist with soil sampling
 - Compliant soil relocation from STF to stockpile area within designated distance of the STF
 - Grade soil for drainage to prevent ponding within STF, place covers and hold downs to secure STF covers

UPT Base Work (A)

Line item details not provided

Class of Labour, Plant or Material	Specification Section	Unit of Measure
Pre-Mobilization Submittals	012520 - 1.1.1	Lump Sum
Mobilization	012520 - 1.1.2	Lump Sum
Site Preparation	012520 - 1.1.3	Lump Sum
Standby Time	012520 - 1.1.4	Days
Site Restoration	012520 - 1.1.5	Lump Sum
Demobilization	012520 - 1.1.6	Lump Sum
Closeout Submittals	012520 - 1.1.7	Lump Sum
Site Facilities - Provision	015200 - 1.1.1	Lump Sum
Site Facilities - Operation	015200 - 1.1.2	Lump Sum

UPT Base Work (A)

Line item details provided in the following slides

Class of Labour, Plant or Material	Specification Section	Unit of Measure
Contaminated Water Treatment Offsite - Provision	026100.02 – 1.1.1	Lump Sum
Contaminated Water Treatment Offsite - Operation	026100.02 – 1.1.2	Lump Sum
Soil Turning	026100.08 – 1.1.1	Hours
Fertilizer Provision and Application	026100.08 – 1.1.2	Tonnes
Fertilizer Application	026100.08 – 1.1.9	Tonnes
Soil Sampling Assistance	026100.08 – 1.1.6	Hours
Compliant Soil Relocation	026100.08 – 1.1.7	Cubic Metres

UPT Base Work (A)

- **Contaminated Water Treatment Offsite - Provision and Operation**
 - Sections 026100.02 – 1.1.1 and 026100.02 – 1.1.2
 - Includes ancillary tanks, storage containers, equipment and piping to collect, store, and sample contaminated or potentially Contaminated Water
 - Volume of water transported off-site for treatment and disposal. Estimated volume provided in Annex B memo
 - Analytical Testing to be completed by the Contractor; analysis may include, but is not limited to, BTEX, VPHs, PHCs, LEPH/HEPH, PAHs and/or total metals



UPT Base Work (A)

- **Soil Turning**
 - Section 026100.08 – 1.1.1
 - Time of excavator to access the STF's and turn / flip the soil
 - Turn / flip soil in 400 mm lifts



UPT Base Work (A)

- **Fertilizer Provision and Application**
 - Section 026100.08 – 1.1.2 and Section 026100.08 – 1.1.9
 - High nitrogen water soluble fertilizer supplied and applied to the STF Cells to assist with bioremediation. Also, application of PSPC supplied fertilizer is only applicable to the STF cells at Triple J.



UPT Base Work (A)

- **Soil Sampling Assistance**
 - Section 026100.08 – 1.1.6
 - Time of excavator to access the STF Cells to excavate soil sampling locations
 - Provide assistance for collection of Soil Samples



UPT Base Work (A)

- **Compliant Soil Relocation**
 - Section 026100.08 – 1.1.7
 - Volume of soil moved from the STF to Soil Stockpile Area, within designated distance of the STF



UPT Optional Work (B)

Line item details provided in the following slides

Class of Labour, Plant or Material	Specification Division - Section	Unit of Measure
Repair STF Liner - Berm, Base and/or Cover	026100.08 – 3.1.6	Lump Sum
Contaminated Soil Transport-Waste Quality	026100.04 – 1.1.1	Tonnes
Contaminated Soil Disposal-Waste Quality	026100.06 – 1.1.1	Tonnes
STF Decommissioning	026100.08 – 1.1.8	Lump Sum
Site Facilities - Provision and Operation for Consultants	015200 – 1.1.3	Lump Sum

UPT Optional Work (B)

- **Repair STF Liner – Berm, Base and/or Cover**
 - Section 026100.08 – 3.1.6
 - Repairs of any pre-existing damage to liner, both berms and base
 - Be prepared to repair a minimum of 10 square meters of liner
 - Photos examples of liner and berm damage and repair



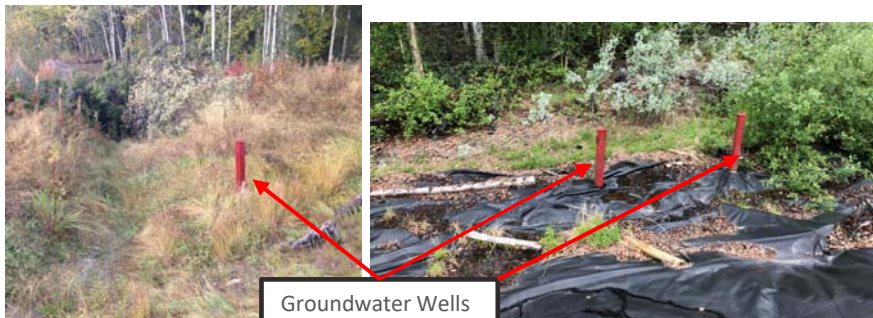
UPT Optional Work (B)

- **Contaminated Soil Transport and Disposal – Waste Quality**
 - Section 026100.04 – 1.1.1 and 026100.06 – 1.1.1
 - For Iron Creek Maintenance Camp STF
 - During decommissioning, if the berm and base material do not meet the remedial objectives (determined by the department representative), material will be considered waste quality and transported and disposed of at a permitted facility by the Contractor
 - Includes handling, loading, hauling, transport, unloading and disposal.



UPT Optional Work (B)

- **STF Decommissioning at Iron Creek Maintenance Camp**
 - Section 026100.08 – 1.1.8
 - Includes items after removal of treated soil (includes sand) and pumping of sump water
 - Includes removal and disposal at a permitted facility of the following:
 - Plywood liner, STF cover and hold downs, STF HDPE liner, outside berm covers and incidental or generated materials
 - Grade the interior fenced area level and sloped for drainage
 - Hydroseed the STF area, assuming 1,500 square meters using hydroseed mix accepted by Department Representative
 - Decommission 11 groundwater monitoring wells in accordance with Yukon Environment Protocol 7, including:
 - Seal wells by injecting with bentonite grout under pressure
 - Cut off PVC pipe approximately 20 cm below surface and slope surface away from well
 - Disposal of surface protection stick up monuments, associated concrete and excess well materials at a permitted facility



UPT Optional Work (B)

- **Site Facilities – Provision and Operation for Consultants**
 - Section 015200 – 1.1.3
 - For Triple J Gravel Pit Location
 - Includes individual onsite accommodations for four consultants including living facilities as outlined in the specification including satellite Wi-fi communications. Contractor is responsible for potable water supply, sewage and grey water pump out and offsite disposal.



End of Presentation