

CORRECTIONAL SERVICE CANADA (CSC) MISSION MINIMUM INSTITUTION EXPANSION OF HEALTH CARE

33737 DEWDNEY TRUNK ROAD, MISSION, B.C.



DRAWINGS LIST

SHEET NO.	SHEET NAME	ISSUE DATE	REVISION
ARCHITECTURAL			
A000	COVER SHEET	2020.03.19	7
A101	SITE PLAN	2020.03.19	7
A102	PHOTOS OF EXISTING CONDITIONS	2020.03.19	7
D201	DEMOLITION PLAN GROUND FLOOR	2020.03.19	7
D301	DEMOLITION PLAN REFLECTED CEILING PLAN FLOOR	2020.03.19	7
A200	BUILDING WALL ASSEMBLIES & GENERAL NOTES	2020.03.19	7
A201	KEY PLANS - GROUND FLOOR & ROOF	2020.03.19	7
A202	GROUND FLOOR PLAN	2020.03.19	7
A203	ROOF PLAN	2020.03.19	7
A301	GROUND FLOOR REFLECTED CEILING PLAN	2020.03.19	7
A401	SOUTH ELEVATION	2020.03.19	7
A501	BUILDING SECTION A-A & BUILDING SECTION B-B	2020.03.19	7
A502	BUILDING SECTION C-C	2020.03.19	7
A503	WALL SECTIONS	2020.03.19	7
A601	EXTERIOR PLAN DETAILS - SHEET 1	2020.03.19	7
A602	EXTERIOR PLAN DETAILS - SHEET 2	2020.03.19	7
A610	EXTERIOR SECTION DETAILS - SHEET 1	2020.03.19	7
A611	EXTERIOR SECTION DETAILS - SHEET 2	2020.03.19	7
A612	EXTERIOR SECTION DETAILS - SHEET 3	2020.03.19	7
A701	STEEL & ALUMINUM GLAZING ELEVATIONS AND GLAZING DETAILS	2020.03.19	7
A801	INTERIOR ELEVATIONS	2020.03.19	7
A802	MILLWORK DETAILS	2020.03.19	7
A803	MILLWORK DETAILS	2020.03.19	7
A804	MILLWORK DETAILS	2020.03.19	7
A805	MILLWORK DETAILS	2020.03.19	7
A806	WASHROOM AND EQUIPMENT ACCESSORIES	2020.03.19	7
A901	FURNITURE AND EQUIPMENT LAYOUT FLOOR PLAN	2020.03.19	7
STRUCTURAL			
S101	GENERAL NOTES	2020.03.19	6
S102	TYPICAL DETAILS	2020.03.19	6
S201	PARTIAL GROUND FLOOR & FOUNDATION PLAN	2020.03.19	6
S202	PARTIAL ROOF PLAN	2020.03.19	6
MECHANICAL			
M-1	LEGEND - AIR BALANCE TABLE MECHANICAL	2020.03.19	6
M-2	MAIN FLOOR PLAN - DEMOLITION	2020.03.19	6
M-3	MAIN FLOOR PLAN - MECHANICAL	2020.03.19	6
M-4	ROOF PLAN - MECHANICAL	2020.03.19	6
M-5	BUILDING SECTION - MECHANICAL	2020.03.19	6
P-1	FOUNDATION PLAN - PLUMBING	2020.03.19	6
P-2	MAIN FLOOR PLAN - PLUMBING	2020.03.19	6
P-3	LEGEND AND DETAILS	2020.03.19	6
F-1	LEGEND AND DETAILS - FIRE PROTECTION	2020.03.19	6
F-2	MAIN FLOOR PLAN - FIRE PROTECTION	2020.03.19	6
ELECTRICAL			
E000	COVER PAGE SYMBOL LEGEND & DRAWING LIST	2020.03.19	6
E001	DEMOLITION PLAN	2020.03.19	6
E002	POWER & LOW TENSION PLAN	2020.03.19	6
E003	LIGHTING PLAN	2020.03.19	6
E004	ELECTRICAL DETAILS & SCHEDULES	2020.03.19	6
E005	PANEL SCHEDULES	2020.03.19	6

Legal Description:

EAST HALF OF THE NORTHWEST QUARTER OF THE SOUTHWEST QUARTER OF SECTION 34, TOWNSHIP 17, N.W.D.

Occupancy Type:

Group D (Table 3.1.2.1)
 Building Height: One (1) Storey
 Existing Building Area: 1143.0m²
 (Renovation) 206.3m²
 (Addition) 25.8m²
 (New Canopy Addition) 15.0m²
 Construction Type: Noncombustible
 Sprinklered: Yes

Applicable Codes:

- NBC 2015
 - NFC 2015
 - NFPA 2015

7	ISSUED FOR TENDER	2021/04/08
6	ISSUED FOR BP APPLICATION	2021/02/26
5	ISSUED FOR TENDER	2018/11/15
4	ISSUED FOR 99% SUBMISSION	2018/08/27
3	ISSUED FOR 66% SUBMISSION	2018/06/28
2	ISSUED FOR 50% SUBMISSION	2018/05/25

Revision/Revision	Description/Description	Date/Date
Client/client		

CORRECTIONAL SERVICE CANADA (CSC)

Project title/Titre du projet
33737 DEWDNEY TRUNK ROAD MISSION, B.C.

MISSION MINIMUM INSTITUTION EXPANSION OF HEALTH CARE

Consultant Signature Only

Designed by/Concept par
KH / SB

Drawn by/Dessiné par
KL

PWGSC Project Manager/Administrateur de Projets TPSGC
CALVIN LU

Regional Manager, Architectural and Engineering Services
 Gestionnaire régionale, Services d'architecture et de génie, TPSGC
PREETIPAL PAUL

Drawing title/Titre du dessin

COVER SHEET

PRIME CONSULTANT

Architectural
 DGBK ARCHITECTS

CONSULTANTS

Structural
 CWMM Consulting Engineers Ltd.

Mechanical
 Integral Group

Electrical
 AES Engineering

Geotechnical
 Golder Associates Ltd.

Quantity Surveyor
 Hanscomb Ltd.

Equipment Consultant
 Caroline Webster Consulting

Specifications
 Carl Selden Construction Specifications

PROJECT MANAGER

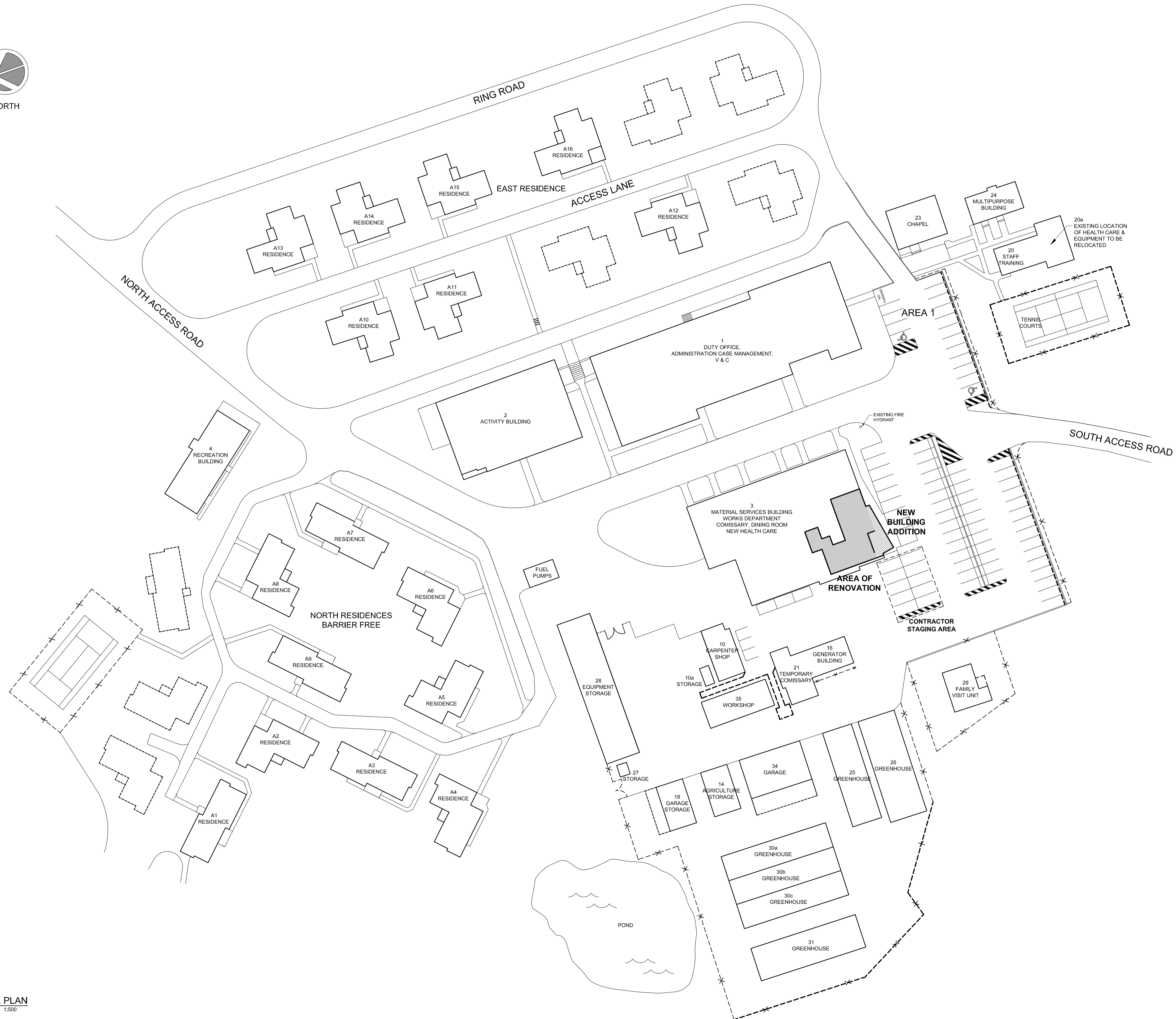
PWGSC
 Public Works and Government Services Canada

Project No./No. du projet R.089145.001	Sheet/Feuille A000	Revision no./La Révision no. 7
--	------------------------------	--





NORTH



AREA OF ADDITION
AREA OF RENOVATION

Revision/Revision	Description/Description	Date/Date
7	ISSUED FOR TENDER	2021/04/08
6	ISSUED FOR BP APPLICATION	2021/02/26
5	ISSUED FOR TENDER	2018/11/15
4	ISSUED FOR 99% SUBMISSION	2018/08/27
3	ISSUED FOR 66% SUBMISSION	2018/06/28
2	ISSUED FOR 50% SUBMISSION	2018/05/25
1	ISSUED FOR PHASE 1	2018/03/15

CORRECTIONAL SERVICE CANADA (CSC)

Project title/Titre du projet
33737 DEWDNEY TRUNK ROAD MISSION, B.C.

MISSION MINIMUM INSTITUTION EXPANSION OF HEALTH CARE

Consultant Signature Only

Designed by/Concept par
KH / SB
Drawn by/Dessine par
KL
PWSC Project Manager/Administrateur de Projets TPSGC
CALVIN LU
Regional Manager, Architectural and Engineering Services
Gestionnaire régionale, Services d'architectural et de génie, TPSGC
PREETIPAL PAUL
Drawing title/Titre du dessin

SITE PLAN

Project No./No. du projet	Sheet/Feuille	Revision no./La Révision no.
R.089145.001	A101	7

1 SITE PLAN
SCALE 1:500
A101





DEMOLITION NOTES

- 1 REMOVE WALL UP TO UNDERSIDE OF STEEL BEAM. PATCH & REPAIR WALLS WHERE NEEDED.
- 2 REMOVE WINDOW AND WALL TO FASCIA PANEL. (APPROX. 2000mm HIGH)
- 3 REMOVE DOOR, DOOR FRAME AND SIDELITE. PATCH & REPAIR WALLS WHERE NEEDED.
- 4 REMOVE DOOR, DOOR FRAME, SIDELITE AND WALL.
- 5 REMOVE WALL EXTERIOR FINISH (METAL SIDING, METAL STRAPPING, BUILDING PAPER & PLYWOOD). REMOVE WALL INTERIOR FINISH (GWB, VAPOUR BARRIER & BATT INSULATION). MAINTAIN STRUCTURAL STEEL STUDS.
- 6 REMOVE DOOR, DOOR FRAME AND SIDELITE. REMOVE WALL EXTERIOR FINISH (METAL SIDING, METAL STRAPPING, BUILDING PAPER & PLYWOOD). REMOVE WALL INTERIOR FINISH (GWB, VAPOUR BARRIER & BATT INSULATION). MAINTAIN STRUCTURAL STEEL STUDS.
- 7 REMOVE WALL TO UNDERSIDE OF SOFFIT. COLUMN TO REMAIN.
- 8 REMOVE LOWER & UPPER MILLWORK CABINETS AND SINK. CAP PLUMBING SERVICES.
- 9 REMOVE WASHROOM EQUIPMENT AND ACCESSORIES. CAP PLUMBING SERVICES. PATCH AND REPAIR WALLS.
- 10 TRENCH SLAB AS NEEDED. PATCH AND REPAIR FLOORS WHERE NEEDED.
- 11 REMOVE VINYL FLOORING. PATCH & REPAIR SUBFLOOR WHERE NEEDED.
- 12 REMOVE EXTERIOR SLOPED CONCRETE SLAB. REMOVE SLAB TO ALLOW FOR NEW FLAT SLAB.
- 13 REMOVE A PORTION OF CONCRETE SIDEWALK AND LAWN.
- 14 REMOVE A PORTION OF ASPHALT AND CONCRETE CURB.
- 15 REMOVE WINDOW BLINDS. PATCH AND REPAIR WALLS WHERE NEEDED.
- 16 REMOVE FLOORING AND SLAB AS NEEDED. (SEE MECH. DRAWINGS FOR EXACT LOCATIONS). PATCH AND REPAIR FLOORS WHERE NEEDED.
- 17 REMOVE RUBBER BASE.
- 18 REMOVE VINYL FLOORING. SLAB AS NEEDED. (SEE MECH. DRAWINGS FOR EXACT LOCATIONS). PATCH AND REPAIR FLOORS WHERE NEEDED.

GENERAL DEMOLITION NOTES

- REMOVE EXISTING MECHANICAL AND ELECTRICAL ITEMS AS REQUIRED IN MECHANICAL & ELECTRICAL DOCUMENTS.

Revision/Revision	Description/Description	Date/Date
7	ISSUED FOR TENDER	2021/04/08
6	ISSUED FOR BP APPLICATION	2021/02/26
5	ISSUED FOR TENDER	2018/11/15
4	ISSUED FOR 99% SUBMISSION	2018/08/27
3	ISSUED FOR 66% SUBMISSION	2018/06/28
2	ISSUED FOR 50% SUBMISSION	2018/05/25
1	ISSUED FOR PHASE 1	2018/03/15

CORRECTIONAL SERVICE CANADA (CSC)

Project title/Titre du projet
33737 DEWDNEY TRUNK ROAD
MISSION, B.C.

MISSION MINIMUM INSTITUTION
EXPANSION OF HEALTH CARE

Consultant Signature Only

Designed by/Concept par
KH / SB

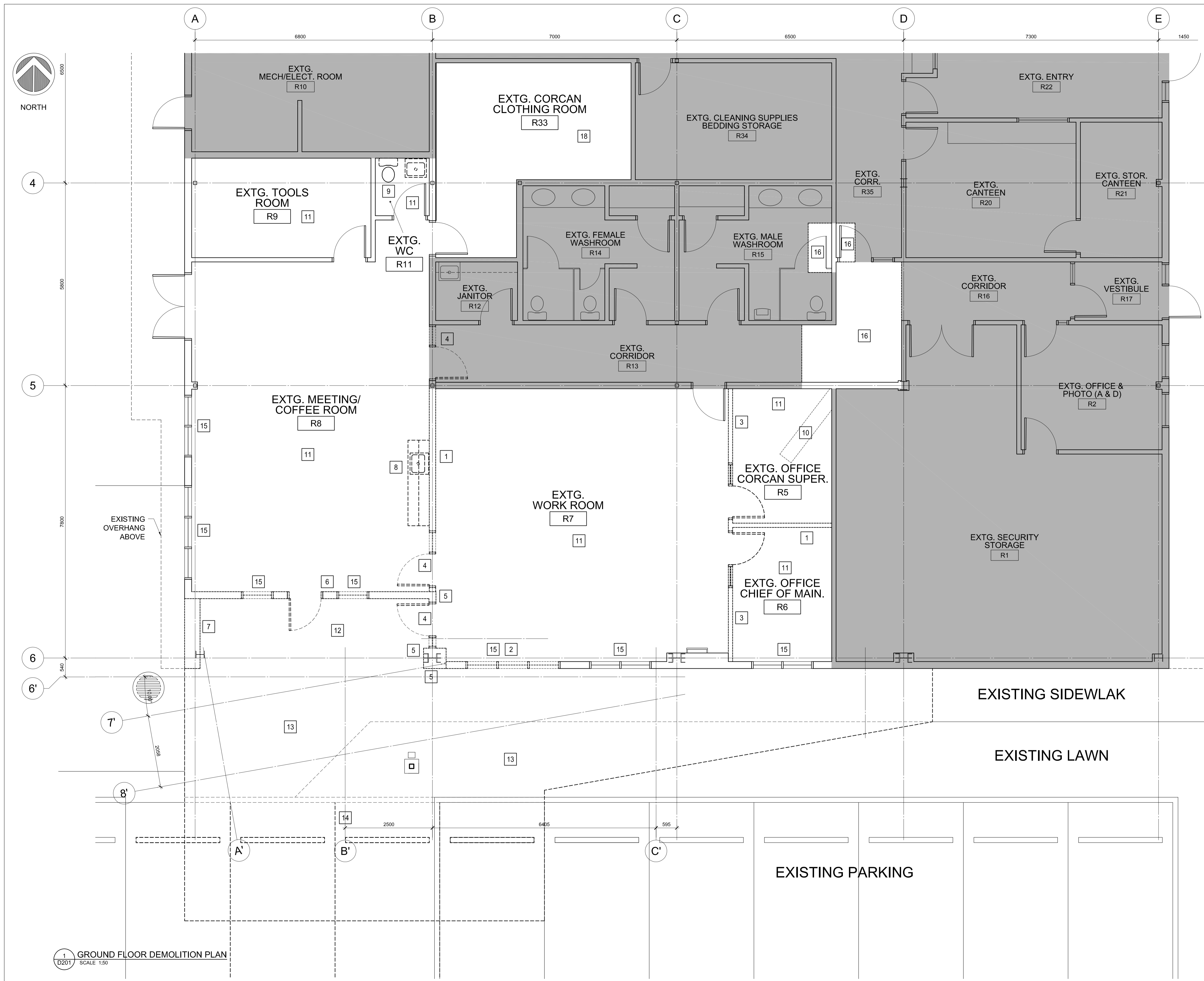
Drawn by/Dessine par
CALVIN LU

PWSC Project Manager/Administrateur de Projets TPSGC
Regional Manager, Architectural and Engineering Services
Gestionnaire régionale, Services d'architecture et de génie, TPSGC
PREETIPAL PAUL

Drawing title/Titre du dessin

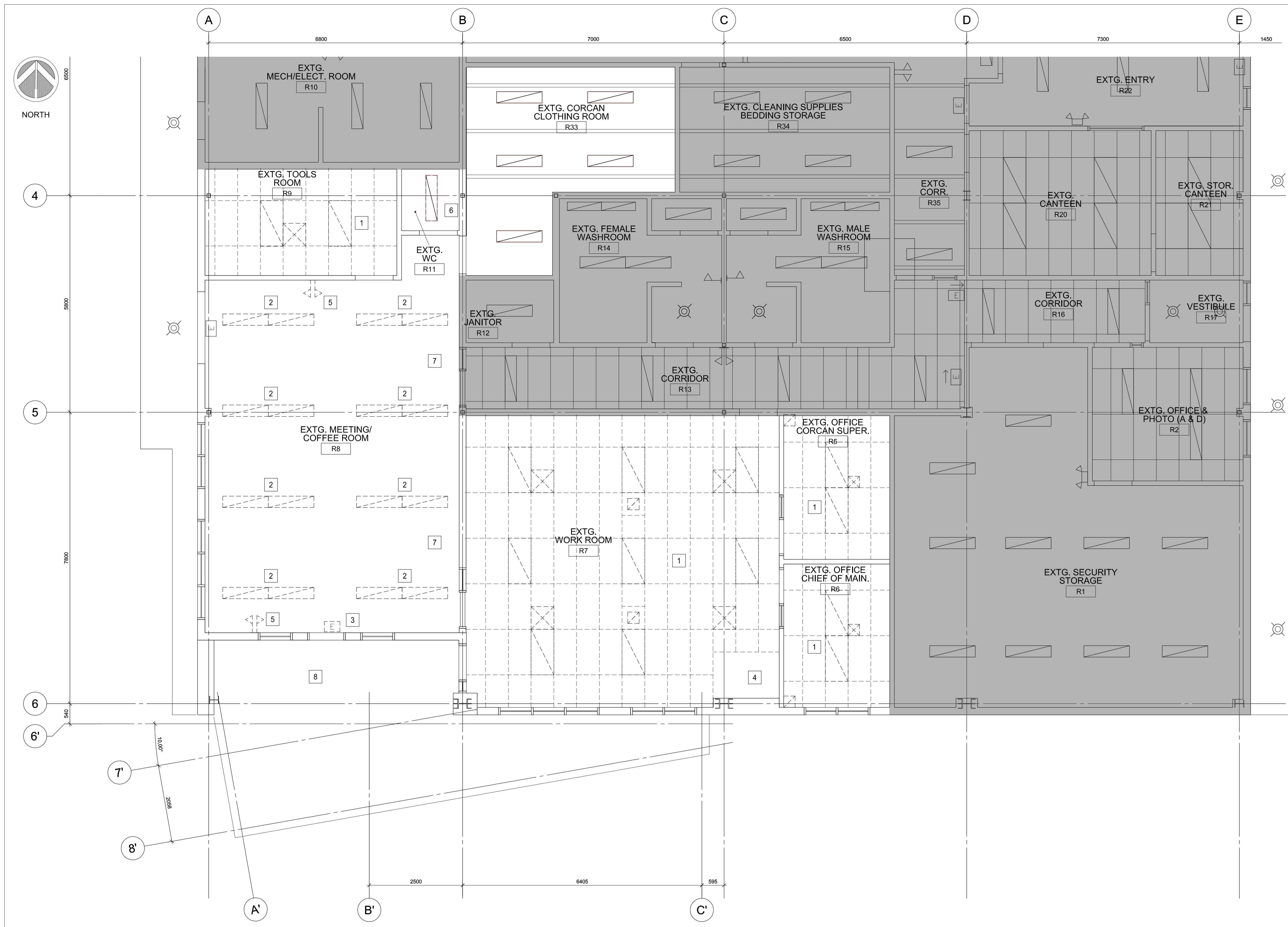
DEMOLITION PLAN
GROUND FLOOR

Project No./No. du projet	Sheet/Feuille	Revision no./La Révision no.
R.089145.001	D201	7



1 D201 GROUND FLOOR DEMOLITION PLAN
SCALE 1:50





CEILING DEMOLITION NOTES

- 1 REMOVE LIGHTING, MECHANICAL AND T-BAR CEILING. PATCH & REPAIR WALLS & CEILINGS WHERE NEEDED.
- 2 REMOVE LIGHTING. PATCH & REPAIR CEILING WHERE NEEDED.
- 3 REMOVE EXIT LIGHTING. PATCH & REPAIR CEILING WHERE NEEDED.
- 4 MAINTAIN GWB WALL AND CEILING AROUND ROOF HATCH OPENING.
- 5 REMOVE EMERGENCY LIGHTS. PATCH & REPAIR WALLS WHERE NEEDED.
- 6 REMOVE LIGHT AND GWB CEILING. PATCH & REPAIR WALLS WHERE NEEDED.
- 7 REMOVE BULKHEAD. PATCH & REPAIR WALLS WHERE NEEDED.
- 8 REMOVE METAL CLADDING SOFFIT. PATCH & REPAIR WALLS WHERE NEEDED.

7	ISSUED FOR TENDER	2021/04/08
6	ISSUED FOR BP APPLICATION	2021/02/26
5	ISSUED FOR TENDER	2018/11/15
4	ISSUED FOR 99% SUBMISSION	2018/06/27
3	ISSUED FOR 66% SUBMISSION	2018/06/28
2	ISSUED FOR 50% SUBMISSION	2018/05/25

Revision/Revision	Description/Description	Date/Date

Client/client
CORRECTIONAL SERVICE CANADA (CSC)

Project title/Titre du projet
33737 DEWDNEY TRUNK ROAD MISSION, B.C.

MISSION MINIMUM INSTITUTION EXPANSION OF HEALTH CARE

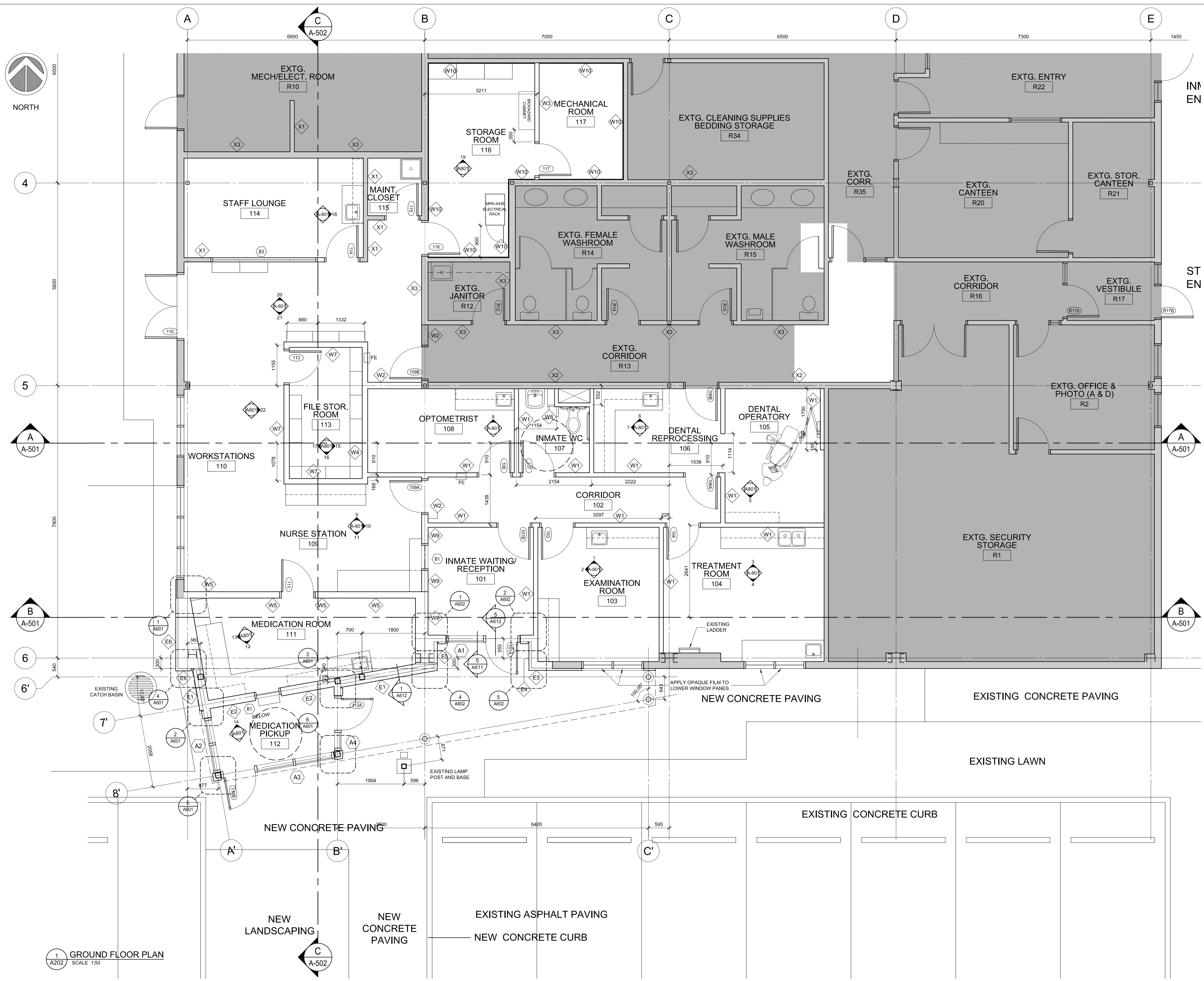
Consultant Signature Only
 Designed by/Concept par **KH / SB**
 Drawn by/Dessine par
CALVIN LU
 Regional Manager, Architectural and Engineering Services / Gestionnaire régionale, Services d'architecture et de génie, TPSC
PREETIPAL PAUL
 Drawing title/Titre du dessin

DEMOLITION REFLECTED CEILING PLAN

Project No./No. du projet R.089145.001	Sheet/Feuille D301	Revision no./La Révision no. 7
--	------------------------------	--

1 DEMOLITION REFLECTED CEILING PLAN
 SCALE 1:50





Revision/	Description/Description	Date/Date
7	ISSUED FOR TENDER	2021/04/08
6	ISSUED FOR BP APPLICATION	2021/02/26
5	ISSUED FOR TENDER	2018/11/15
4	ISSUED FOR 99% SUBMISSION	2018/08/27
3	ISSUED FOR 66% SUBMISSION	2018/06/28
2	ISSUED FOR 50% SUBMISSION	2018/05/25
1	ISSUED FOR PHASE 1	2018/03/15

CORRECTIONAL SERVICE CANADA (CSC)

Project title/Titre du projet
33737 DEWDNEY TRUNK ROAD MISSION, B.C.

MISSION MINIMUM INSTITUTION EXPANSION OF HEALTH CARE

Consultant Signature Only

Designed by/Concept par
KH / SB

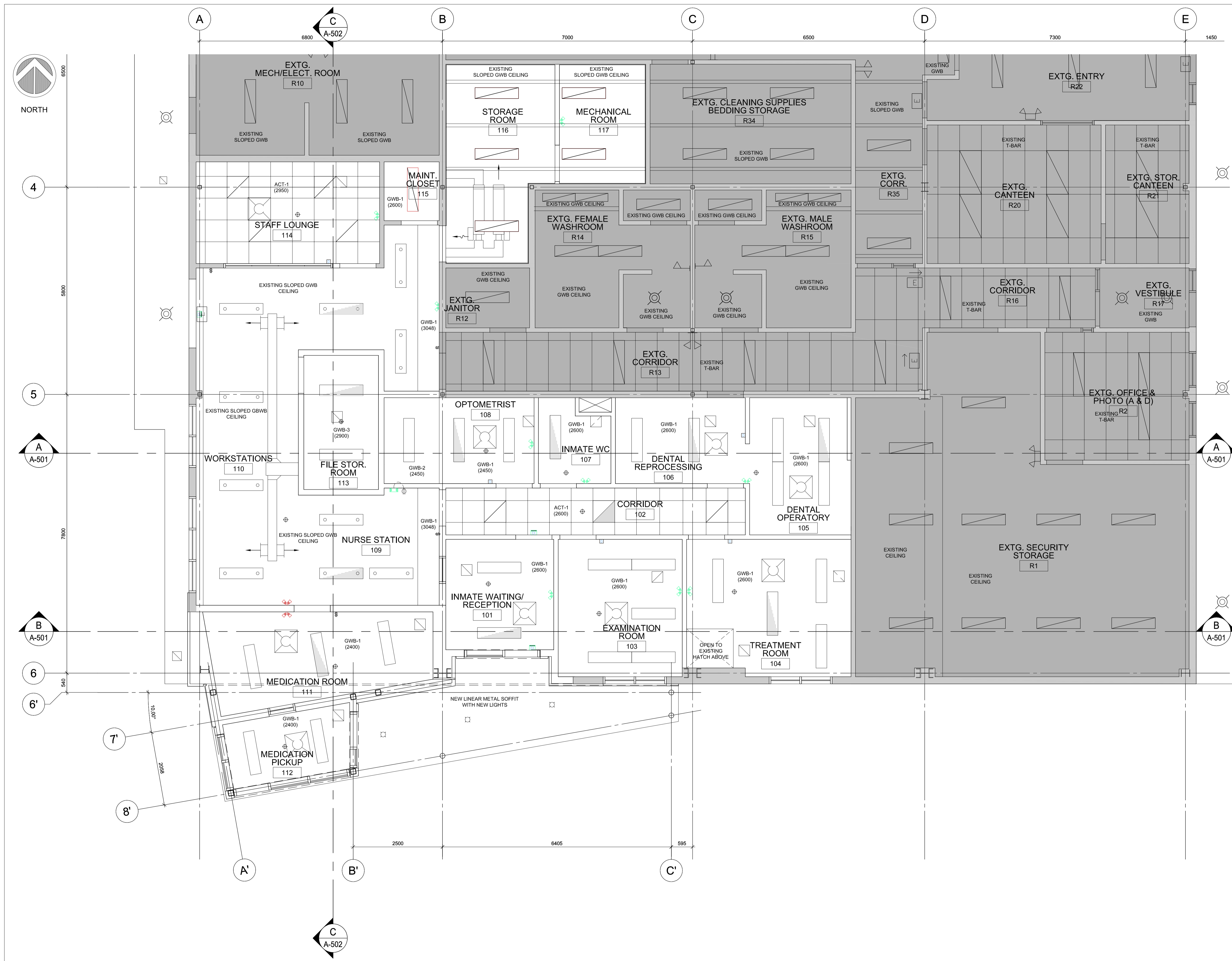
Drawn by/Dessiné par
KL / KH / HB

PWGSC Project Manager/Administrateur de Projets TPSGC
CALVIN LU

Regional Manager, Architectural and Engineering Services
 Gestionnaire régionale, Services d'architecture et de génie, TPSGC
PREETIPAL PAUL

Drawing title/Titre du dessin
GROUND FLOOR PLAN

Project No./No. du projet	Sheet/Feuille	Revision no./La Révision no.
R.089145.001	A202	7



Revision/Revision	Description/Description	Date/Date
7	ISSUED FOR TENDER	2021/04/08
6	ISSUED FOR BP APPLICATION	2021/02/26
5	ISSUED FOR TENDER	2018/11/15
4	ISSUED FOR 99% SUBMISSION	2018/08/27
3	ISSUED FOR 66% SUBMISSION	2018/06/28
2	ISSUED FOR 50% SUBMISSION	2018/05/25

Revision/Revision Description/Description Date/Date
Client/client

CORRECTIONAL SERVICE CANADA (CSC)

Project title/Titre du projet
33737 DEWDNEY TRUNK ROAD MISSION, B.C.

MISSION MINIMUM INSTITUTION EXPANSION OF HEALTH CARE

Consultant Signature Only

Designed by/Concept par
KH / SB

Drawn by/Dessiné par
KL

PWGSC Project Manager/Administrateur de Projets TPSGC
CALVIN LU

Regional Manager, Architectural and Engineering Services
Gestionnaire régionale, Services d'architecture et de génie, TPSGC
PREETIPAL PAUL

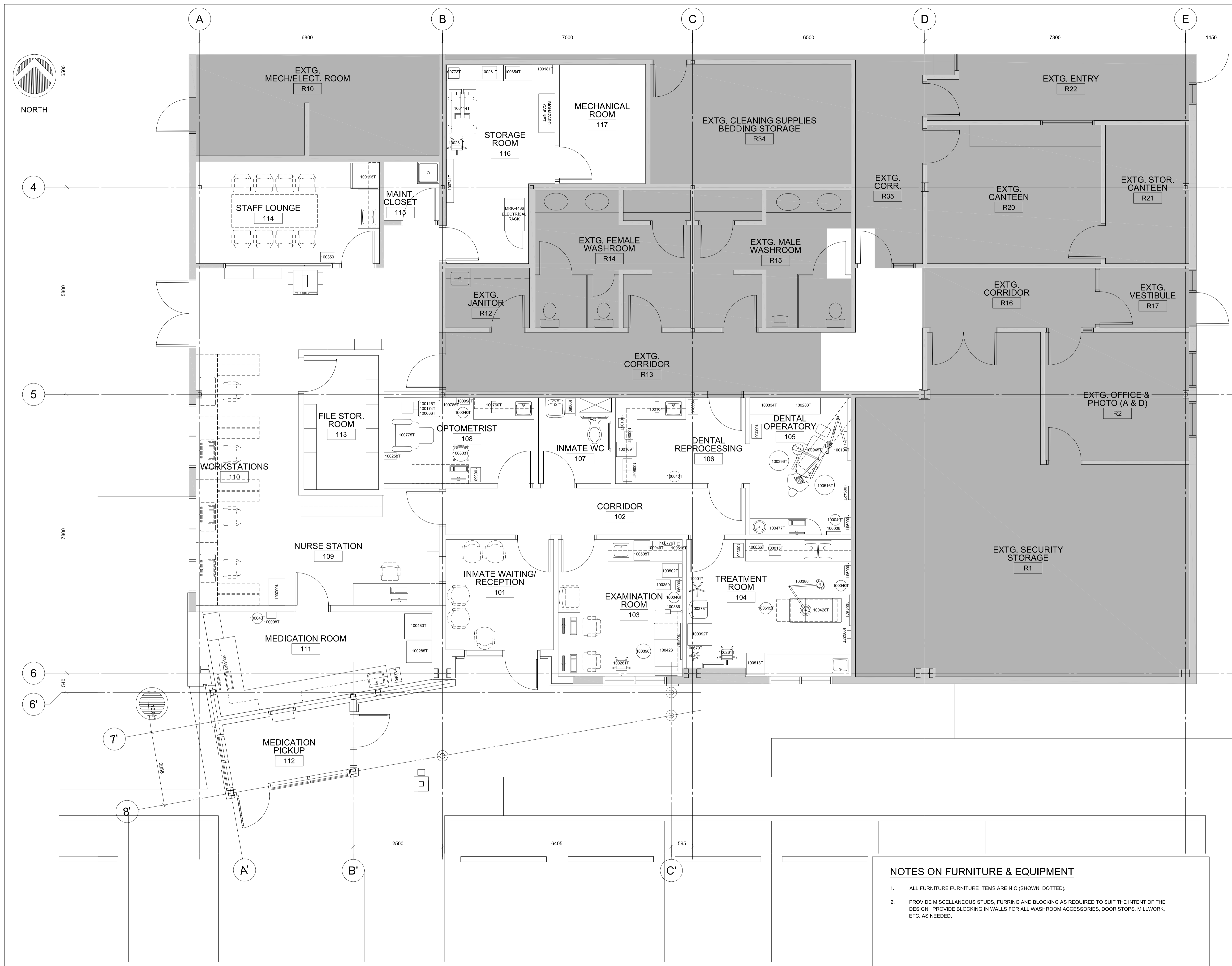
Drawing title/Titre du dessin

GROUND FLOOR REFLECTED CEILING PLAN

Project No./No. du projet	Sheet/Feuille	Revision no./La Révision no.
R.089145.001	A301	7

2 GROUND FLOOR REFLECTED CEILING PLAN
SCALE 1:200





Revision/Revision	Description/Description	Date/Date
7	ISSUED FOR TENDER	2021/04/08
6	ISSUED FOR BP APPLICATION	2021/02/26
5	ISSUED FOR TENDER	2018/11/15
4	ISSUED FOR 99% SUBMISSION	2018/08/27
3	ISSUED FOR 66% SUBMISSION	2018/06/28
2	ISSUED FOR 50% SUBMISSION	2018/05/25

Client/client

CORRECTIONAL SERVICE CANADA (CSC)

Project title/Titre du projet
33737 DEWDNEY TRUNK ROAD MISSION, B.C.

MISSION MINIMUM INSTITUTION EXPANSION OF HEALTH CARE

Consultant Signature Only

Designed by/Concept par
KH / SB

Drawn by/Dessiné par
KL

PWSC Project Manager/Administrateur de Projets TPSCG
CALVIN LU

Regional Manager, Architectural and Engineering Services
Gestionnaire régionale, Services d'architecture et de génie, TPSCG
PREETIPAL PAUL

Drawing title/Titre du dessin

FURNITURE AND EQUIPMENT LAYOUT FLOOR PLAN

Project No./No. du projet
R.089145.001

Sheet/Feuille
A901

Revision no./La Révision no.
7

NOTES ON FURNITURE & EQUIPMENT

- ALL FURNITURE FURNITURE ITEMS ARE NIC (SHOWN DOTTED).
- PROVIDE MISCELLANEOUS STUDS, FURRING AND BLOCKING AS REQUIRED TO SUIT THE INTENT OF THE DESIGN. PROVIDE BLOCKING IN WALLS FOR ALL WASHROOM ACCESSORIES, DOOR STOPS, MILLWORK, ETC. AS NEEDED.

1 A901 GROUND FLOOR PLAN - FURNITURE AND EQUIPMENT LAYOUT
SCALE 1:50



MISSION MINIMUM INSTITUTION EXPANSION OF HEALTH CARE

SYMBOL LEGEND				
LIGHTING	POWER	COMMUNICATION	FIRE ALARM	SINGLE LINE
EMERGENCY/NIGHT LIGHT LUMINAIRE	SINGLE RECEPTACLE	TELEPHONE OUTLET	SMOKE DETECTOR	FEEDER/CONDUCTOR
SURFACE MOUNTED LUMINAIRE	DUPLEX RECEPTACLE	FLOOR MOUNTED TELEPHONE OUTLET	DUCT MOUNTED SMOKE DETECTOR	BUSBAR/CDP
CEILING RECESSED LUMINAIRE	DOUBLE DUPLEX RECEPTACLE	PAY TELEPHONE OUTLET	THERMAL DETECTOR	POWER CIRCUIT BREAKER (VACUUM OR SF6)
CEILING SUSPENDED LINEAR LUMINAIRE	ABOVE COUNTER DUPLEX RECEPTACLE	CATV OUTLET	DUCT MOUNTED SMOKE DETECTOR	DRAW OUT BREAKER
FLUORESCENT STRIP LIGHT	ABOVE COUNTER FOUR PLEX RECEPTACLE	FLOOR MOUNTED CATV OUTLET	FIRE ALARM PIEZO WITH SILENCE SWITCH	BREAKER
SURFACE MOUNTED LUMINAIRE	5-20R DUPLEX RECEPTACLE (T-SLOT)	CEILING MOUNTED CATV OUTLET	FIRE ALARM HORN (W/STROBE)	KEY INTERLOCK SWITCH
RECESSED DOWN LIGHT	ABOVE COUNTER 5-20R DUPLEX RECEPTACLE (T-SLOT)	COMBINATION COAXIAL/RJ45 OUTLET	FIRE ALARM PULL STATION	GANG OPERATED LOAD BREAK SWITCH
WALL MOUNTED DOWN LIGHT	1/2 SWITCHED DUPLEX RECEPTACLE	COMBINATION TELEPHONE AND DATA OUTLET WALL	FIRE ALARM BELL	MOTORIZED GANG OPERATED LOAD BREAK SWITCH
RECESSED STEP LIGHT	SPLIT DUPLEX RECEPTACLE	COMBINATION TELEPHONE AND DATA OUTLET ABOVE COUNTER	FIRE ALARM GONG	GANG OPERATED DISCONNECT SWITCH
PENDANT LUMINAIRE	ABOVE COUNTER SPLIT DUPLEX RECEPTACLE	COMBINATION TELEPHONE AND DATA OUTLET CEILING	FIRE ALARM GONG W/STROBE	FUSE
UNDER CUPBOARD STRIP/PUCK LIGHT	ISOLATED GROUND DUPLEX RECEPTACLE	COMBINATION TELEPHONE AND DATA OUTLET FLOOR	FIRE ALARM HORN	RELAY
TRACK	ISOLATED GROUND FOUR PLEX RECEPTACLE	WIREMOLD MOUNTED DATA/TEL	FIRE ALARM STROBE	NORMALLY OPEN CONTACT
TRACK HEAD	GROUND FAULT INTERRUPTER DUPLEX RECEPTACLE	WIREMOLD MOUNTED TEL OUTLET	FIRE ALARM REMOTE TROUBLE	NORMALLY CLOSE CONTACT
SPOT LIGHT	GROUND FAULT INTERRUPTER FOUR PLEX RECEPTACLE	WIREMOLD MOUNTED TV OUTLET	FIREFIGHTERS TELEPHONE	CABLE POTHEAD
POLE LUMINAIRE	ABOVE COUNTER GFCI DUPLEX RECEPTACLE	COMBINATION OUTLET	CEILING MOUNTED FIRE ALARM SPEAKER	LIGHTNING ARRESTER
TWO HEAD POLE LUMINAIRE	FLOOR MOUNTED DUPLEX RECEPTACLE	WIRELESS ACCESS POINT	WALL MOUNTED FIRE ALARM SPEAKER	GROUND
GRAPHICAL USER INTERFACE - LIGHTING CONTROL	FLOOR MOUNTED DOUBLE DUPLEX RECEPTACLE	VOLUME CONTROL	END OF LINE RESISTOR	METERING TRANSFORMER
TIME CLOCK	CEILING MOUNTED DUPLEX RECEPTACLE	VOLUME CONTROL STATION	FIRE ALARM PANEL	SERVICE PROVIDER METER
DIMMER SWITCH	CEILING MOUNTED DOUBLE DUPLEX RECEPTACLE	INTERCOM OUTLET	FIRE ALARM ANNUNCIATOR	DIGITAL METERING UNIT
PHOTOCELL	SYSTEMS FURNITURE POWER WHIP CONNECTION	FLOOR MOUNTED INTERCOM OUTLET	SPRINKLER FLOW SWITCH	OVERCURRENT GROUND RELAY
THREE WAY TOGGLE SWITCH	SERVICE PAC POLE	CEILING MOUNTED SPEAKER	SPRINKLER VALVE SUPERVISORY	OVERCURRENT PHASE RELAY
SINGLE POLE TOGGLE SWITCH, GANGED AS SHOWN	JUNCTION BOX	WALL MOUNTED SPEAKER	SECURITY	
LOW VOLTAGE SWITCH, GANGED AS SHOWN	MECHANICAL EQUIPMENT DIRECT CONNECTION	PUBLIC ADDRESS HORN	PERIMETER DOOR ALARM	DELTA-WYE TRANSFORMER
OCCUPANCY SENSOR, CEILING MOUNTED	KITCHEN EQUIPMENT CONNECTION	PROJECTOR	SPECIAL PERIMETER DOOR ALARM	GENERATOR
VACANCY SENSOR, CEILING MOUNTED	VARIABLE SPEED SWITCH	SYSTEM FURNITURE COMM TRANSITION WALL BOX	CCTV (ROUGH-IN ONLY) (SUBSCRIPT 135° INDICATES WIDE ANGLE, 360° INDICATES 360 DEGREES)	TRANSFER SWITCH
OCCUPANCY SENSOR, WALL MOUNTED	THERMOSTAT	SYSTEM FURNITURE COMM TRANSITION WALL BOX	MAGNETIC DOOR HOLD OPEN	LONG, SHORT, INSTANTANEOUS, & GROUND TRIP UNIT
VACANCY SENSOR, WALL MOUNTED	BASEBOARD HEATER, WATTAGE AS NOTED ON PLANS	BELL	DOOR CONTACT	FEED THROUGH
EXIT SIGN - ARROWS AS INDICATED	FORCE FLOW HEATER	BUZZER	CARD READER	TIME DELAY
EXIT SIGN - SINGLE SIDED	MECHANICAL MOTOR CONNECTION	HORN	ELECTRIC HINGE	LOW VOLTAGE LIGHTING RELAY CABINET
EMERGENCY BATTERY PACK	DISCONNECT SWITCH	CLOCK OUTLET	ELECTRIC LOCKSET	DOUBLE NEUTRAL
DUAL REMOTE EMERGENCY HEADS, CEILING MOUNTED	MAGNETIC STARTER	CABLE TRAY	ELECTRIC STRIKE	PHASE SHIFT
DUAL REMOTE EMERGENCY HEADS, WALL MOUNTED	CONTACTOR		KEY PAD	
DUAL EMERGENCY HEADS COMPLETE WITH SELF CONTAINED BATTERY PACK, CEILING MOUNTED	MANUAL STARTER		REQUEST TO EXIT SENSOR	ABBREVIATIONS
DUAL EMERGENCY HEADS COMPLETE WITH SELF CONTAINED BATTERY PACK, WALL MOUNTED	GROUND BUS		MORTISE LOCK (ROUGH-IN ONLY)	NOTE
	PANEL BOARD		GLASS BREAK DETECTOR (ROUGH-IN ONLY)	EQUIPMENT SHOWN DOTTED IS EXISTING AND TO REMAIN UNLESS INDICATED OTHERWISE
	CONDUIT RUN UP		SECURITY SYSTEM ELECTRIC STRIKE	D INDICATES CIRCUIT TO BE DEDICATED
	CONDUIT RUN DOWN		INTRUSION MOTION DETECTOR 180°	RI INDICATES ROUGH-IN ONLY
	PUSH BUTTON		INTRUSION MOTION DETECTOR 360°	NL NIGHT LIGHT
	EMERGENCY PUSH BUTTON		INTRUSION MOTION DETECTOR WALL MOUNTED	R EXISTING TO BE REMOVED
			INTRUSION ALARM HORN	RR EXISTING TO BE REMOVED AND RELOCATED
			VAULT ALARM PANEL	RE EXISTING IN NEW RELOCATED POSITION
			INTRUSION ALARM ANNUNCIATOR	RP EXISTING TO BE REPLACED WITH NEW
			INTRUSION ALARM KEY PAD	RW EXISTING TO BE REWORKED
			INTRUSION ALARM CONTROL PANEL	WP WEATHER PROOF
			SECURITY ALARM (ROUGH IN ONLY)	IG ISOLATED GROUND
				E EXISTING DEVICE TO REMAIN
				'SW' SWITCHED RECEPTACLE FOR PLUG LOAD CONTROL

*NOT ALL SYMBOLS ARE USED.

DRAWING LIST	
DWG NO.	DESCRIPTION
E000	COVER SHEET, SYMBOL LEGEND & DRAWING LIST
E001	DEMOLITION PLAN
E002	POWER & LOW TENSION PLAN
E003	LIGHTING PLAN
E004	ELECTRICAL DETAILS & SCHEDULES
E005	PANEL SCHEDULES & DETAILS
E006	BUILDING FIRE ALARM PLANS

Revision/	Description/Description	Date/Date
7	ISSUED FOR TENDER	2021/04/08
6	ISSUED FOR COORDINATION	2021/03/19
5	ISSUED FOR BP APPLICATION	2021/02/26
4	ISSUED FOR TENDER	2018/11/15
3	ISSUED FOR 99% SUBMISSION	2018/08/27
2	ISSUED FOR 86% SUBMISSION	2018/06/28
1	ISSUED FOR 50% PROGRESS	2018/05/23

Client/client
CORRECTIONAL SERVICE CANADA (CSC)

Project title/Titre du projet
33737 DEWDNEY TRUNK ROAD MISSION, B.C.

MISSION MINIMUM INSTITUTION EXPANSION OF HEALTH CARE

Consultant Signature Only

Designed by/Concept par
AES

Drawn by/Dessiné par
AES

PWGSC Project Manager/Administrateur de Projets TPSPC
TONY TANG

Regional Manager, Architectural and Engineering Services / Gestionnaire régionale, Services d'architecture et de génie, TPSPC
PREETIPAL PAUL

Drawing title/Titre du dessin
COVER PAGE, SYMBOL LEGEND & DRAWING LIST

Project No./No. du projet	Sheet/Fauille	Revision no./La Révision no.
R.089145.001	E000	7



DGBK

AES

Designing A Better Tomorrow
505 Burrard Street, Suite 950, Vancouver, BC V7X 1M4
604.569.6500 | www.aesengr.com
CALGARY | VANCOUVER | VICTORIA
AES PROJECT # 2-18-012

Revision/	Description/Description	Date/Date
7	ISSUED FOR TENDER	2021/04/08
6	ISSUED FOR COORDINATION	2021/03/19
5	ISSUED FOR BP APPLICATION	2021/02/26
4	ISSUED FOR TENDER	2018/11/15
3	ISSUED FOR 99% SUBMISSION	2018/09/27
2	ISSUED FOR 66% SUBMISSION	2018/06/28
1	ISSUED FOR 50% PROGRESS	2018/05/23

Client/client
CORRECTIONAL SERVICE CANADA (CSC)

Project title/Titre du projet
33737 DEWDNEY TRUNK ROAD MISSION, B.C.

MISSION MINIMUM INSTITUTION EXPANSION OF HEALTH CARE

Consultant Signature Only

Designed by/Concept par
AES

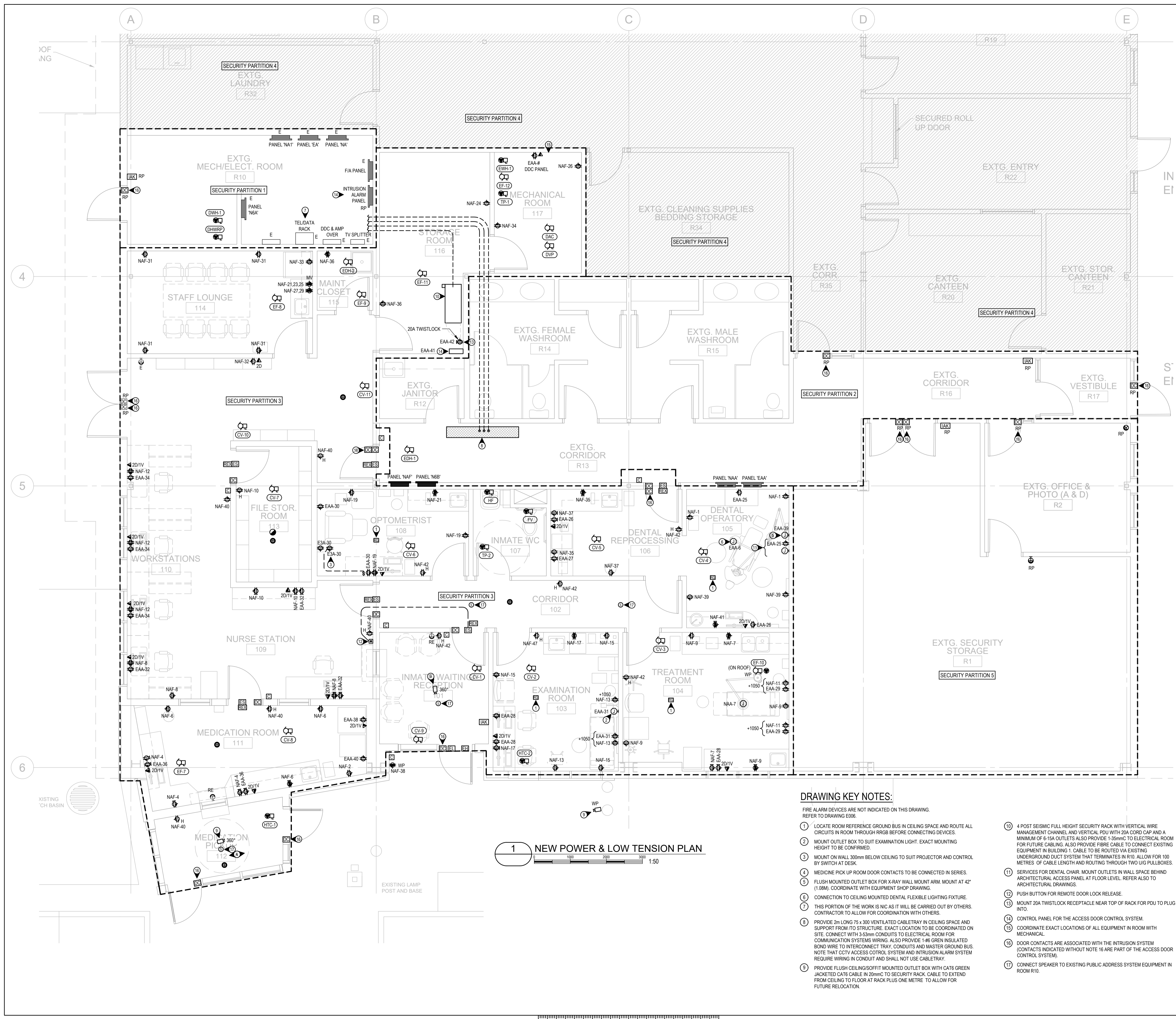
Drawn by/Dessiné par
AES

PWSC Project Manager/Administrateur de Projets TPSCG
TONY TANG

Regional Manager, Architectural and Engineering Services / Gestionnaire régionale, Services d'architecture et de génie, TPSCG
PREETIPAL PAUL

Drawing title/Titre du dessin
POWER & LOW TENSION PLAN

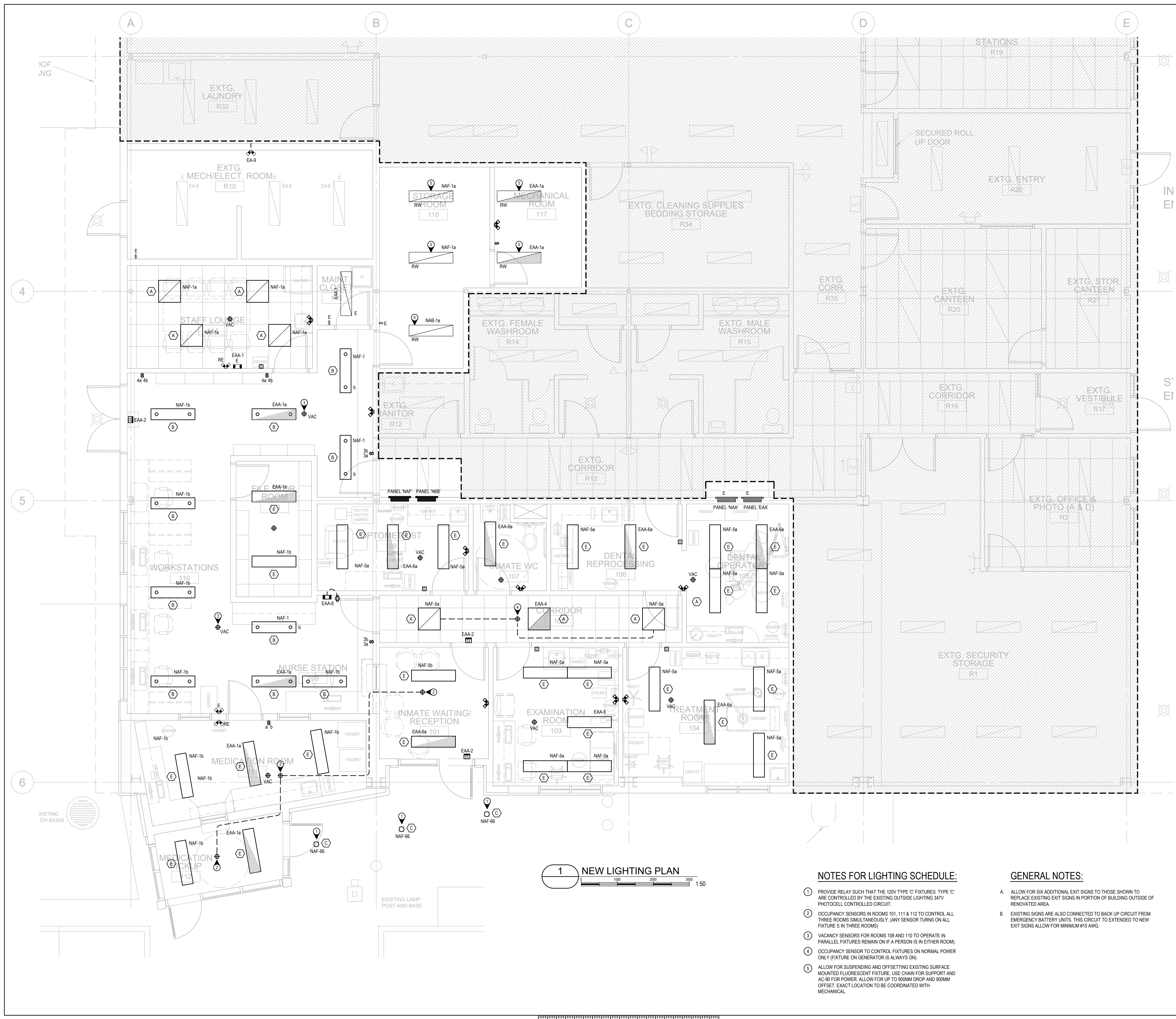
Project No./No. du projet R.089145.001	Sheet/Fauille E002	Revision no./La Révision no. 7
--	------------------------------	--



DRAWING KEY NOTES:

- FIRE ALARM DEVICES ARE NOT INDICATED ON THIS DRAWING. REFER TO DRAWING E006.
- LOCATE ROOM REFERENCE GROUND BUS IN CEILING SPACE AND ROUTE ALL CIRCUITS IN ROOM THROUGH RRGD BEFORE CONNECTING DEVICES.
 - MOUNT OUTLET BOX TO SUIT EXAMINATION LIGHT. EXACT MOUNTING HEIGHT TO BE CONFIRMED.
 - MOUNT ON WALL 300mm BELOW CEILING TO SUIT PROJECTOR AND CONTROL BY SWITCH AT DESK.
 - MEDICINE PICK UP ROOM DOOR CONTACTS TO BE CONNECTED IN SERIES.
 - FLUSH MOUNTED OUTLET BOX FOR X-RAY WALL MOUNT ARM. MOUNT AT 42" (1.08M), COORDINATE WITH EQUIPMENT SHOP DRAWINGS.
 - CONNECTION TO CEILING MOUNTED DENTAL FLEXIBLE LIGHTING FIXTURE.
 - THIS PORTION OF THE WORK IS NIC AS IT WILL BE CARRIED OUT BY OTHERS. CONTRACTOR TO ALLOW FOR COORDINATION WITH OTHERS.
 - PROVIDE 2m LONG 75 x 300 VENTILATED CABLETRAY IN CEILING SPACE AND SUPPORT FROM /TO STRUCTURE. EXACT LOCATION TO BE COORDINATED ON SITE. CONNECT WITH 3/8" CONDUITS TO ELECTRICAL ROOM FOR COMMUNICATION SYSTEMS WIRING. ALSO PROVIDE 1/2" GREEN INSULATED BOND WIRE TO INTERCONNECT TRAY, CONDUITS AND MASTER GROUND BUS. NOTE THAT CCTV ACCESS CONTROL SYSTEM AND INTRUSION ALARM SYSTEM REQUIRE WIRING IN CONDUIT AND SHALL NOT USE CABLETRAY.
 - PROVIDE FLUSH CEILING/SOFFIT MOUNTED OUTLET BOX WITH CAT6 GREEN JACKETED CAT6 CABLE IN 20mmC TO SECURITY RACK. CABLE TO EXTEND FROM CEILING TO FLOOR AT RACK PLUS ONE METRE. TO ALLOW FOR FUTURE RELOCATION.
 - 4 POST SEISMIC FULL HEIGHT SECURITY RACK WITH VERTICAL WIRE MANAGEMENT CHANNEL AND VERTICAL PDU WITH 20A CORD CAP AND A MINIMUM OF 6-15A OUTLETS ALSO PROVIDE 1-35mmC TO ELECTRICAL ROOM FOR FUTURE CABLING. ALSO PROVIDE FIBRE CABLE TO CONNECT EXISTING EQUIPMENT IN BUILDING 1. CABLE TO BE ROUTED VIA EXISTING UNDERGROUND DUCT SYSTEM THAT TERMINATES IN R10. ALLOW FOR 100 METRES OF CABLE LENGTH AND ROUTING THROUGH TWO IUG PULLBOXES.
 - SERVICES FOR DENTAL CHAIR. MOUNT OUTLETS IN WALL SPACE BEHIND ARCHITECTURAL ACCESS PANEL AT FLOOR LEVEL. REFER ALSO TO ARCHITECTURAL DRAWINGS.
 - PUSH BUTTON FOR REMOTE DOOR LOCK RELEASE.
 - MOUNT 20A TWISTLOCK RECEPTACLE NEAR TOP OF RACK FOR PDU TO PLUG INTO.
 - CONTROL PANEL FOR THE ACCESS DOOR CONTROL SYSTEM.
 - COORDINATE EXACT LOCATIONS OF ALL EQUIPMENT IN ROOM WITH MECHANICAL.
 - DOOR CONTACTS ARE ASSOCIATED WITH THE INTRUSION SYSTEM (CONTACTS INDICATED WITHOUT NOTE 16 ARE PART OF THE ACCESS DOOR CONTROL SYSTEM).
 - CONNECT SPEAKER TO EXISTING PUBLIC ADDRESS SYSTEM EQUIPMENT IN ROOM R10.





1 NEW LIGHTING PLAN
1:50

NOTES FOR LIGHTING SCHEDULE:

- 1 PROVIDE RELAY SUCH THAT THE 120V TYPE 'C' FIXTURES TYPE 'C' ARE CONTROLLED BY THE EXISTING OUTSIDE LIGHTING 347V PHOTOCELL CONTROLLED CIRCUIT.
- 2 OCCUPANCY SENSORS IN ROOMS 101, 111 & 112 TO CONTROL ALL THREE ROOMS SIMULTANEOUSLY. (ANY SENSOR TURNS ON ALL FIXTURES IN THREE ROOMS)
- 3 VACANCY SENSORS FOR ROOMS 109 AND 110 TO OPERATE IN PARALLEL FIXTURES REMAIN ON IF A PERSON IS IN EITHER ROOM).
- 4 OCCUPANCY SENSOR TO CONTROL FIXTURES ON NORMAL POWER ONLY (FIXTURE ON GENERATOR IS ALWAYS ON).
- 5 ALLOW FOR SUSPENDING AND OFFSETTING EXISTING SURFACE MOUNTED FLUORESCENT FIXTURE. USE CHAIN FOR SUPPORT AND AC-90 FOR POWER. ALLOW FOR UP TO 900MM DROP AND 900MM OFFSET. EXACT LOCATION TO BE COORDINATED WITH MECHANICAL.

GENERAL NOTES:

- A. ALLOW FOR SIX ADDITIONAL EXIT SIGNS TO THOSE SHOWN TO REPLACE EXISTING EXIT SIGNS IN PORTION OF BUILDING OUTSIDE OF RENOVATED AREA.
- B. EXISTING SIGNS ARE ALSO CONNECTED TO BACK UP CIRCUIT FROM EMERGENCY BATTERY UNITS. THIS CIRCUIT TO EXTENDED TO NEW EXIT SIGNS ALLOW FOR MINIMUM #10 AWG.

Revision/	Description/Description	Date/Date
7	ISSUED FOR TENDER	2021/04/08
6	ISSUED FOR COORDINATION	2021/03/19
5	ISSUED FOR BP APPLICATION	2021/02/26
4	ISSUED FOR TENDER	2018/11/15
3	ISSUED FOR 99% SUBMISSION	2018/08/27
2	ISSUED FOR 66% SUBMISSION	2018/06/28
1	ISSUED FOR 50% PROGRESS	2018/05/23

Client/client
CORRECTIONAL SERVICE CANADA (CSC)

Project title/Titre du projet
33737 DEWDNEY TRUNK ROAD MISSION, B.C.
MISSION MINIMUM INSTITUTION EXPANSION OF HEALTH CARE

Consultant Signature Only
Designed by/Concept par
AES
Drawn by/Dessiné par
AES
PWGSC Project Manager/Administrateur de Projets TPSGC
TONY TANG

Regional Manager, Architectural and Engineering Services
Gestionnaire régionale, Services d'architecture et de génie, TPSGC
PREETIPAL PAUL

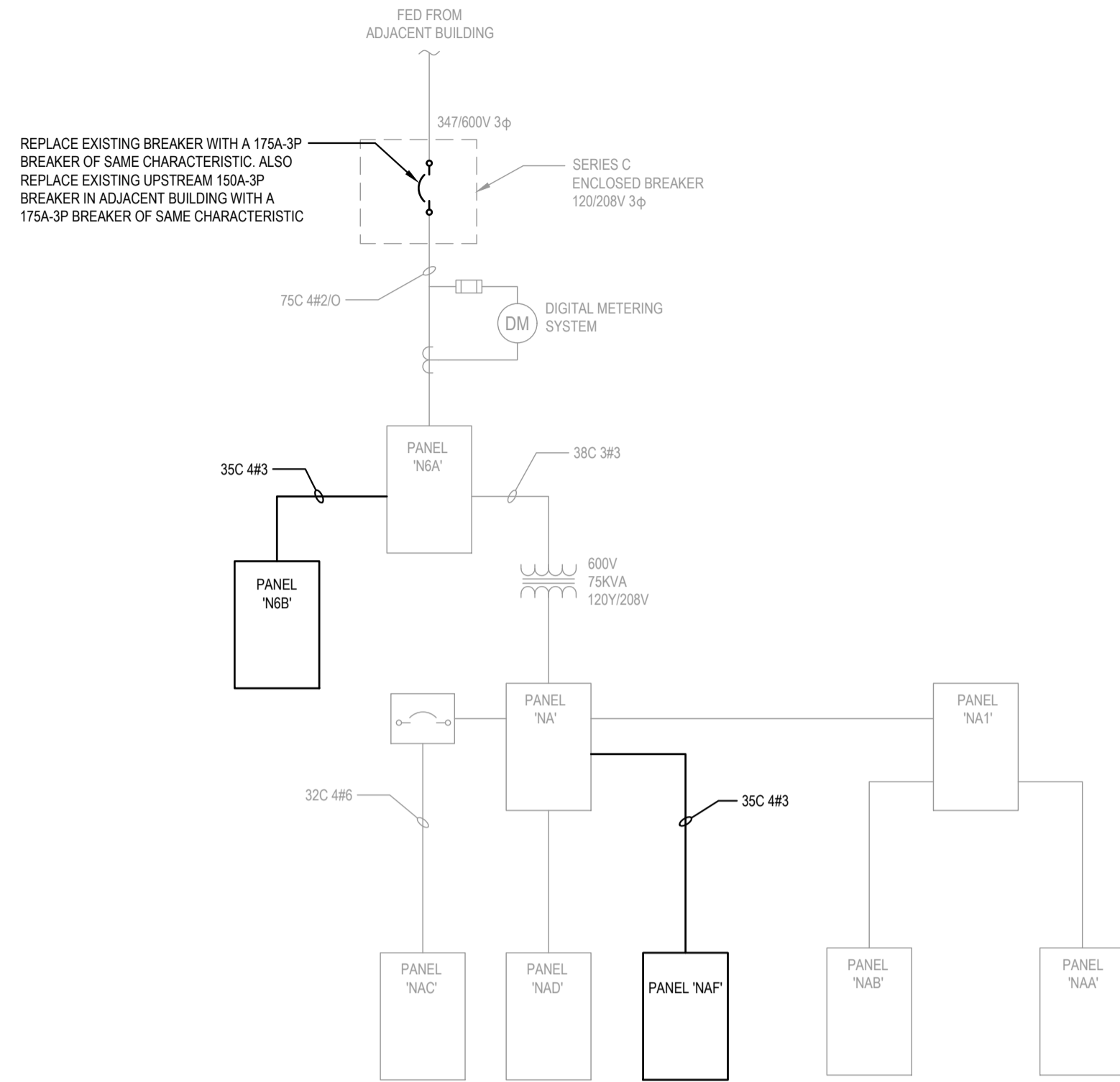
Drawing title/Titre du dessin
LIGHTING PLAN

Project No./No. du projet R.089145.001	Sheet/Fauille E003	Revision no./ La Révision no. 7
--	------------------------------	--

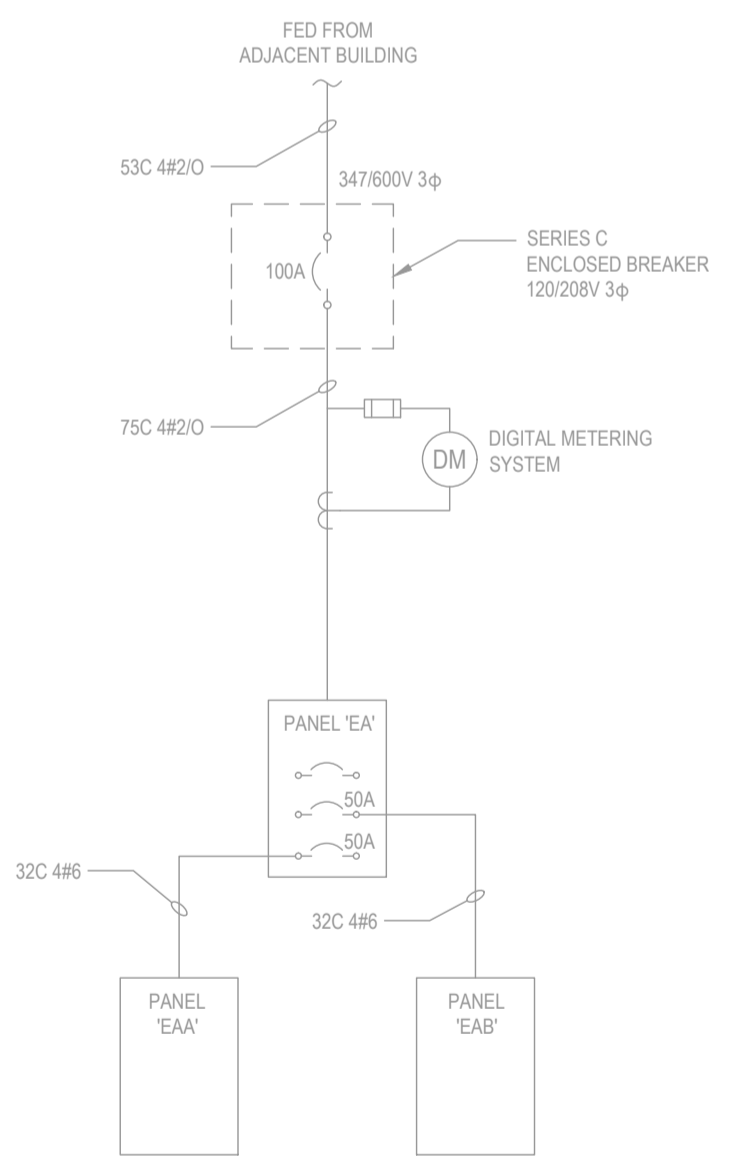




505 Burrard Street, Suite 950, Vancouver, BC V7X 1M4
604.569.6500 | www.aesengr.com
CALGARY | VANCOUVER | VICTORIA
AES PROJECT # 2-18-012



1 NORMAL DISTRIBUTION - SINGLE LINE DIAGRAM
SCALE: NTS



2 ESSENTIAL DISTRIBUTION - SINGLE LINE DIAGRAM
SCALE: NTS

GENERAL NOTES: (SLD)

A. BOLD LINE WORK INDICATES REVISIONS AND ADDITIONS.

MECHANICAL EQUIPMENT SCHEDULE

Q#	DESCRIPTION	EQUIPMENT LOCATION	LOAD			VOLTS	PHASE	UNIT		STARTER			DISCONNECT			CONTROL			SUPPLY PANEL			WIRE & CONDUIT			NOTES							
			MCA	KW	HP			SUPPLY	INSTALL	CONNECT	SUPPLY	INSTALL	CONNECT	TYPE	SUPPLY	INSTALL	CONNECT	SUPPLY	INSTALL	CONNECT	TYPE	FIRE/ALARM	PANEL #	PANEL LOCATION		BREAKER						
																										AMPS	P	CCT NOS	WIRE SIZE	CONDUIT SIZE (mm)	TOTAL AMPS	
AHU-1	AIR HANDLING UNIT	ROOF OVER CORR. 102	11	-	-	600	3	M	M	E	M	-	E	VFD	M	M	E	M	M	M	M	-	N6B	ELECTRICAL ROOM R10	15	3	1, 3, 5	12	3	16	25	1
AHU	AHU LIGHTING AND RECEPTACLE		12			120	1	M	M	E	M	-	-	-	-	-	-	-	-	-	-	-	NAF	ELECTRICAL ROOM R10	15	1	50	12	2	16	25	2
HP-1	AHU HEAT PUMP	ROOF OVER CORR 102	18.2			600	3	M	M	E	M	-	E	VFD	M	M	E	M	M	M	-	N6B	CORR. R13	25	3	43,45,47	10	3	16	35	1	
CV-1	CONSTANT AIR VOLUME TERMINAL W/ ELEC HTR	WAITING / RECEPTION 101		2.5		600	3	M	M	E	M				E	E	E	M	M	M	T	-	N6B	CORR. R13	15	3	7, 9, 11	12	2	16	25	
CV-2	CONSTANT AIR VOLUME TERMINAL W/ ELEC HTR	EXAM RM 103		1.5		600	3	M	M	E	M				E	E	E	M	M	M	T	-	N6B	CORR. R13	15	3	13, 15, 17	12	3	16	25	
CV-3	CONSTANT AIR VOLUME TERMINAL W/ ELEC HTR	TREATMENT RM104		2.0		600	3	M	M	E	M				E	E	E	M	M	M	T	-	N6B	CORR. R13	15	3	19, 21, 23	12	3	16	25	
CV-4	CONSTANT AIR VOLUME TERMINAL W/ ELEC HTR	DENTAL OPER RM 105		1.5		600	3	M	M	E	M				E	E	E	M	M	M	T	-	N6B	CORR. R13	15	3	25, 27, 29	12	3	16	25	
CV-5	CONSTANT AIR VOLUME TERMINAL W/ ELEC HTR	DENTAL REPRO RM 106		1.5		600	3	M	M	E	M				E	E	E	M	M	M	T	-	N6B	CORR. R13	15	3	31, 33, 35	12	3	16	25	
CV-6	CONSTANT AIR VOLUME TERMINAL W/ ELEC HTR	OPTOMETRIST RM 108		1.5		600	3	M	M	E	M				E	E	E	M	M	M	T	-	N6B	CORR. R13	15	3	37, 39, 41	12	3	16	25	
CV-7	CONSTANT AIR VOLUME TERMINAL W/ ELEC HTR	FILE STOR RM 113		1.0		600	3	M	M	E	M				E	E	E	M	M	M	T	-	N6B	CORR. R13	15	3	2, 4, 6	12	3	16	25	
CV-8	CONSTANT AIR VOLUME TERMINAL W/ ELEC HTR	MEDICATION RM 111		2.5		600	3	M	M	E	M				E	E	E	M	M	M	T	-	N6B	CORR. R13	15	3	8, 10, 12	12	3	16	25	
CV-9	CONSTANT AIR VOLUME TERMINAL W/ ELEC HTR	WAITING/RECEP 101		1.5		600	3	M	M	E	M				E	E	E	M	M	M	T	-	N6B	CORR. R13	15	3	14, 16, 18	12	3	16	25	
CV-10	CONSTANT AIR VOLUME TERMINAL W/ ELEC HTR	STOR RM 116 STAFF LOUNGE 114		2.0		600	3	M	M	E	M				E	E	E	M	M	M	T	-	N6B	CORR. R13	15	3	20, 22, 24	12	3	16	25	
CV-11	CONSTANT AIR VOLUME TERMINAL W/ ELEC HTR	STOR RM 116		2.5		600	3	M	M	E	M				E	E	E	M	M	M	T	-	N6B	CORR. R13	15	3	26, 28, 30	12	3	16	25	
EDH-1	ELECTRIC DUCT HEATER	CORRIDOR R13		1.0		600	3	M	M	E	M				E	E	E	M	M	M	T	-	N6B	CORR. R13	15	3	32, 34, 36	12	3	16	25	
EDH-2	ELECTRIC DUCT HEATER	MAINT. CLOSET 115		2.5		600	3	M	M	E	M				E	E	E	M	M	M	T	-	N6B	CORR. R13	15	3	38, 40, 42	12	3	16	25	
EF-7	EXHAUST FAN	MED. ROOM 111		3.11FLA		120	1	M	M	E	M			INT	E	E	E	M	M	M	DOC	-	NAF	CORR. R13	15	1	46	12				3
EF-8	EXHAUST FAN	STAFF LOUNGE 114		0.71FLA		120	1	M	M	E	M			INT	E	E	E	M	M	M	DOC	-	NAF	CORR. R13	15	1	44	12				3
EF-9	EXHAUST FAN	MAINT. CLOSET 115		0.34FLA		120	1	M	M	E	M			INT	E	E	E	M	M	M	DOC	-	NAF	CORR. R13	15	1	44	12				3
EF-10	EXHAUST FAN	ROOF OVER TRT 104		0.02BHP		120	1	M	M	E	M			INT	E	E	E	M	M	M	DOC	-	NAF	CORR. R13	15	1	48	12				3
EF-11	EXHAUST FAN	STORAGE 116		0.3		120	1	M	M	E	M			INT	E	E	E	M	M	M	DOC	-	NAF	STORAGE 116	15	1	18	12	2	16	25	
EF-12	EXHAUST FAN	MECH RM 117		0.16		120	1	M	M	E	M			INT	E	E	E	M	M	M	DOC	-	EA	ELECTRICAL RM R10	15	1	21	12	2	16	25	
DDC-1	DDC PANEL	MECH ROOM 117		0.1		120	1	M	M	E				E	E	E	M	M	M			-	EA	ELECTRICAL ROOM R10	15	1	19	12	2	16	25	
TP-1	TRAP PRIMER ELECTRONIC	MECH ROOM 117		0.009		120	1	M	M	E/M				E	E	E	M	M	M			-	EAA	CORR. R13	15	1	33	12	2	16	25	4
TP-2	TRAP PRIMER ELECTRONIC	INMATE WC 107		0.009		120	1	M	M	E/M				E	E	E	M	M	M			-	EAA	CORR. R13	15	1	33	12	2	16	25	4
DHWH-1	DOMESTIC HOT WATER HTR (GAS FIRE STOR)	MECH ROOM R10	5	-	-	120	1	M	M	E				E	E	E	M	M	M	INT	-	NA	ELECTRICAL ROOM R10	15	1	8	12	2	16	25		
DWH-1	DOMESTIC HOT WATER HTR (ELEC STOR TANK)	MECH ROOM 117		12		600	3	M	M	E				E	E	E	M	M	M	INT	-	NA	ELECTRICAL ROOM R10	15	3	1, 3, 5	12	2	16	25		
DHWRP	DOMESTIC HOT WATER RECIRCULATING PUMP	MECH/ELEC RM R10		0.1		120	1	M	M	E				E	E	E	M	M	M	INT	-	EA	ELECTRICAL ROOM R10	20	1	17	12	2	16	25		
DAC	DENTAL AIR COMPRESSOR	BOILER ROOM 117	8	-	-	120	1	M	M	E			E	INT	E	E	E	M	M	M	INT	-	EAA	CORR. R13	20	1	35	12	2	16	25	
DVP	DENTAL VACUUM PUMP	BOILER ROOM 117	8	-	-	208	1	M	M	E			E	INT	E	E	E	M	M	M	INT	-	EAA	CORR. R13	15	1	37	12	2	16	25	
FV	HANDS FREE FAUCET COLD	WC 107		0.1		120 (24)	1	M	M	E/M				E	E	E	M	M	M			-	EAA	CORR. R13	15	1	33	12	2	16	25	4
HF	HANDS FREE FAUCET HOT	WC 107		0.1		120 (24)	1	M	M	E/M				E	E	E	M	M	M			-	EAA	CORR. R13	15	1	33	12	2	16	25	4
HTC-1	HEAT TRACING FOR RWL	MEDICATION RM 112		0.003		120	1	M	M	E	M				E	E	E	M	M	M	T	-	NAF	CORR. R13	15	1	52	12	2	16	25	
HTC-2	HEAT TRACING FOR RWL	EXAM RM 103		0.004		120	1	M	M	E	M				E	E	E	M	M	M	T	-	NAF	CORR. R13	15	1	52	12	2	16	25	

LEGEND
M = DENOTES BY MECHANICAL CONTRACTOR
E = DENOTES BY ELECTRICAL CONTRACTOR
T = THERMOSTAT
TS = TIMER SWITCH
HOA = MAGNETIC STARTER WITH HAND-OFF-AUTO SELECTOR
MAQ = MAGNETIC STARTER WITH AUX STATUS CONTACTS
MAN = MANUAL STARTER
C.P. = CONTROL PANEL
INT = INTEGRAL WITH UNIT
I = INTERLOCK
OA = MAGNETIC STARTER WITH OFF-AUTO SELECTOR
SS = MAGNETIC STARTER WITH START-STOP SELECTOR
W/T = WIRE TO
VFD = VARIABLE FREQUENCY DRIVE
RT = REVERSE-ACTING THERMOSTAT
SW = H.P. RATED SWITCH
DDC = CONTROLLED BY DDC SYSTEM
PS = PRESSURE SWITCH

NOTES
1. SINGLE POINT POWER CONNECTION.
2. SINGLE POINT SERVICE LIGHTING AND POWER CONNECTION.
3. INTERLOCKED WITH AHU-1 BY MECHANICAL.
4. PROVIDE TWO SINGLE KEY SWITCHES (DISCONNECTS) OUTSIDE ROOM 107 AND CONNECT TO TRANSFORMERS PROVIDED BY MECHANICAL TO CONTROL ALL SOLENOID VALVES FOR FLUSHING IN ROOM AND FOR ALL TRAP PRIMERS.

LUMINAIRE SCHEDULE

TYPE	DESCRIPTION	LOCATION	PRE-APPROVED PRODUCTS	MOUNTING	LAMP					BALLAST/DRIVER	VOLTAGE	REMARKS	NOTES	
					WATTS (W)	TYPE	LED LUMENS	COLOUR	MIN CRI					QTY
A	Nominal 2' x 2' LED Troffer	Staff Lounge, Corridor	Philips Ledalite SilkSpace - SilkSp2x2_8-17lm	RECESSED	16.7	LED	1810	3500K	82	3	0-10V	120		
B	Nominal 1' x 4' LED Suspended Linear	Work Stations, Nurse Station	Philips Ledalite Eyeline - ELxSL835340G04D	SUSPENDED	25	LED	3237	3500k	82		0-10V	120		
C	6" Exterior Recessed Downlight	Entrance Soffit	Alphabet LEDRABrands - NU6-RA-XTM19-07LM-30K-83-D40-	RECESSED	9.5	LED	630	3000K	83		0-10V	120		
D	Not Used													
E	Nominal 1' x 4' LED Recessed Linear	Exam/Treatment Rooms, Waiting Room, Medic Room, File Room	Philips Ledalite ArcForm - 3514DxxxLB30	RECESSED	27.9	LED	105.9	3000K	80		0-10V	120	Plaster Frame Req.	

GENERAL NOTES
A. DUE TO CONSTANT CHANGES IN CATALOGUE NUMBERS, ALL NUMBERS INDICATED MUST BE VERIFIED WITH THE MANUFACTURER PRIOR TO ORDERING.
B. ALL LUMINAIRE FINISHES TO BE APPROVED BY ARCHITECT PRIOR TO ORDERING.
C. TYPE OF CONSTRUCTION FOR ALL CEILINGS TO BE COORDINATED WITH ARCHITECTURAL DRAWINGS PRIOR TO ORDERING MOUNTING KITS. CONTRACTOR TO OBTAIN A SET OF IFC ARCHITECTURAL DRAWINGS AND COORDINATE MOUNTING WITH CEILING TYPES SHOWN. NO EXTRAS WILL BE ALLOWED FOR RE-ORDERING OF LUMINAIRES OR MOUNTING KITS TO MATCH CEILING TYPES SHOWN ON ARCHITECTURAL PLANS. MOUNTING HEIGHT OF ALL SUSPENDED LUMINAIRES TO BE ADJUSTABLE ON SITE, AND CONTRACTOR TO COORDINATE ON SITE UNDER DIRECTION OF CONSULTANT.
D. CONTRACTOR TO ALLOW A MINIMUM 2 WEEKS FOR INITIAL REVIEW OF ENTIRE LIGHTING SHOP DRAWING PACKAGE. NO DELAY CLAIMS WILL BE ALLOWED FOR ANY SUBSEQUENT REVIEW TIME REQUIRED DUE TO INCORRECT SHOP DRAWINGS. IT IS THE CONTRACTOR'S RESPONSIBILITY TO ENSURE LUMINAIRES ARE DELIVERED IN A TIMELY MANNER TO THE SITE. NO EXTRAS WILL BE ALLOWED FOR SUBSTITUTIONS OR RUSH CHARGES REQUIRED TO MEET PROJECT SCHEDULE AND MUST BE ALLOWED FOR IN TENDER PRICE.
E. ALL CONTROLS INTEGRATED WITH LUMINAIRES TO BE COMMISSIONED ON SITE AFTER INSTALL. CONTRACTOR TO ENSURE THAT ALLOWANCE IS MADE FOR ADJUSTING AND COMMISSIONING OF ALL CONTROLS AS REQUIRED.
F. COORDINATE MOUNTING HEIGHT OF ALL WALL MOUNTED LUMINAIRES WITH ARCHITECT PRIOR TO ROUGH-IN. COORDINATE SUSPENSION HEIGHT OF ALL SUSPENDED LUMINAIRES WITH ARCHITECT PRIOR TO INSTALLATION.
G. ALL JUNCTION BOXES FOR SURFACE MOUNT LUMINAIRES SHALL NOT BE WIDER THAN THE LUMINAIRE MOUNTING PLATE.
H. ALL LED LUMINAIRES ARE BE INCLUDED WITH CONSTANT CURRENT DRIVERS UNLESS SPECIFIED.
I. ALL LUMINAIRES SHALL BE APPROVED AS DEFINED IN CURRENT CANADIAN ELECTRICAL CODE (CEC).

Revision/Revision	Description/Description	Date/Date
7	ISSUED FOR TENDER	2021/04/08
6	ISSUED FOR COORDINATION	2021/03/19
5	ISSUED FOR BP APPLICATION	2021/02/26
4	ISSUED FOR TENDER	2018/11/15
3	ISSUED FOR 90% SUBMISSION	2018/09/27
2	ISSUED FOR 66% SUBMISSION	2018/06/28
1	ISSUED FOR 50% PROGRESS	2018/05/23

CORRECTIONAL SERVICE CANADA (CSC)

Project Title/Titre du projet
33737 DEWDNEY TRUNK ROAD MISSION, B.C.

MISSION MINIMUM INSTITUTION EXPANSION OF HEALTH CARE

Consultant Signature Only

Designed by/Concept par
AES

Drawn by/Dessiné par
AES

PWGCSC Project Manager/Administrateur de Projets TPSCG
TONY TANG

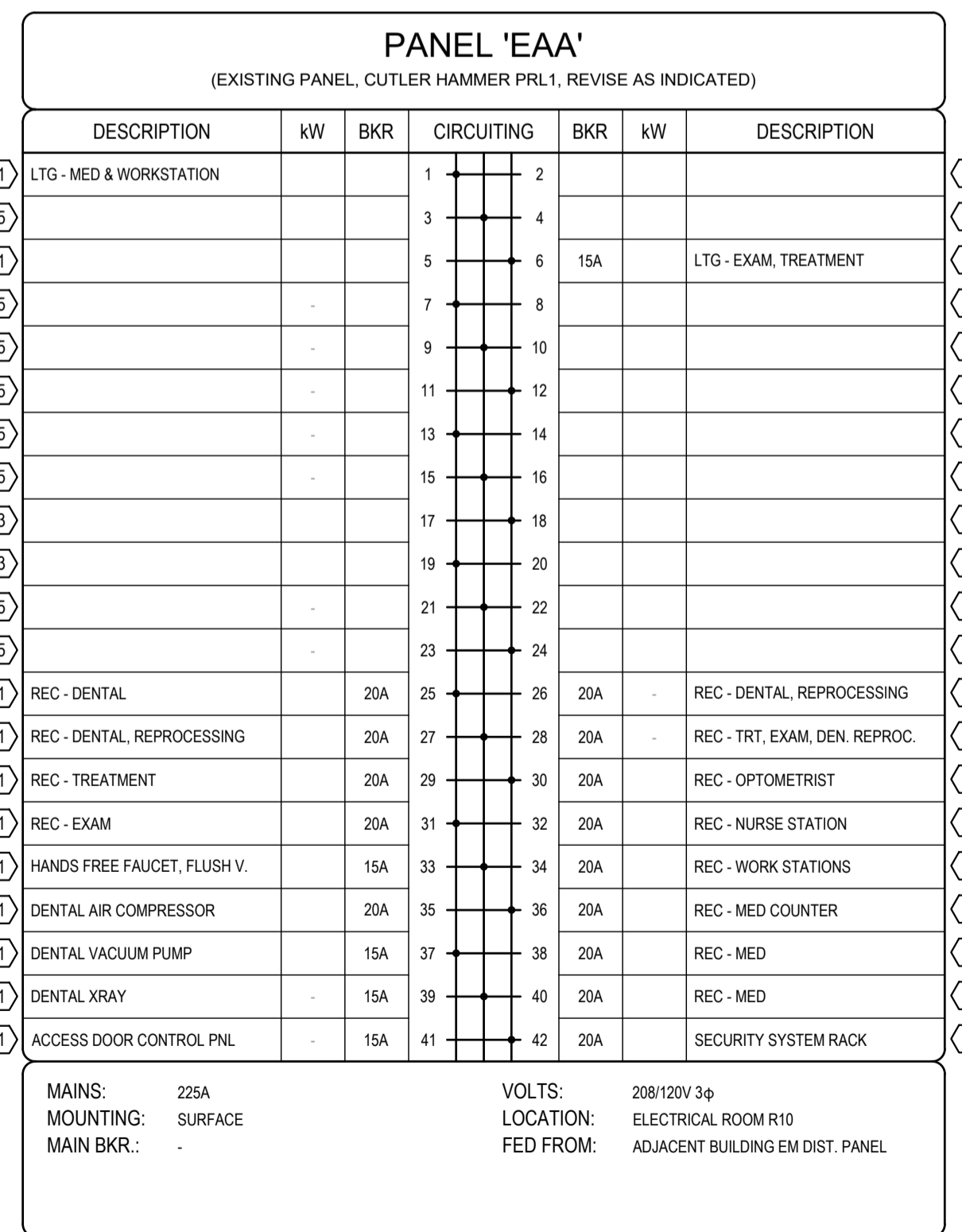
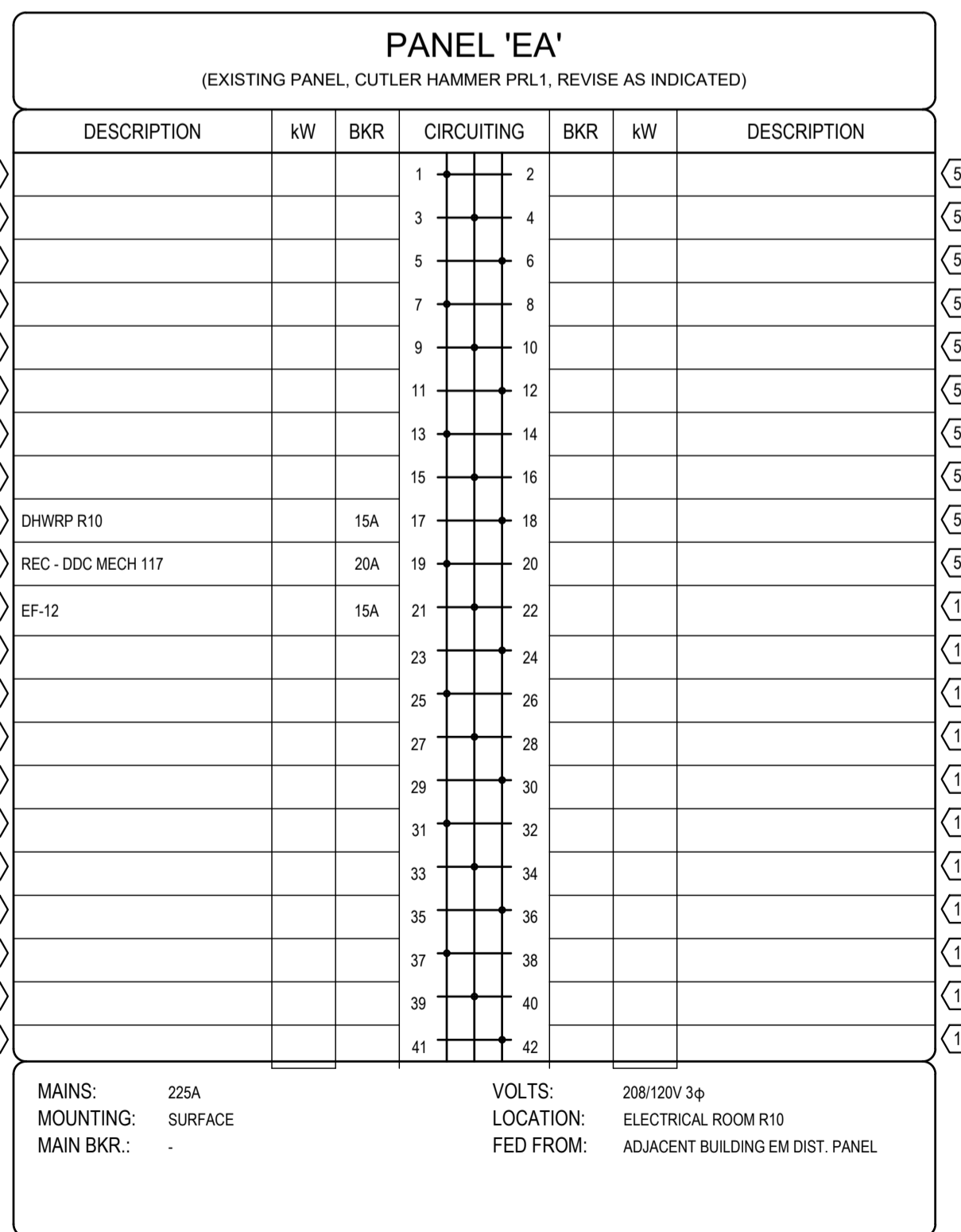
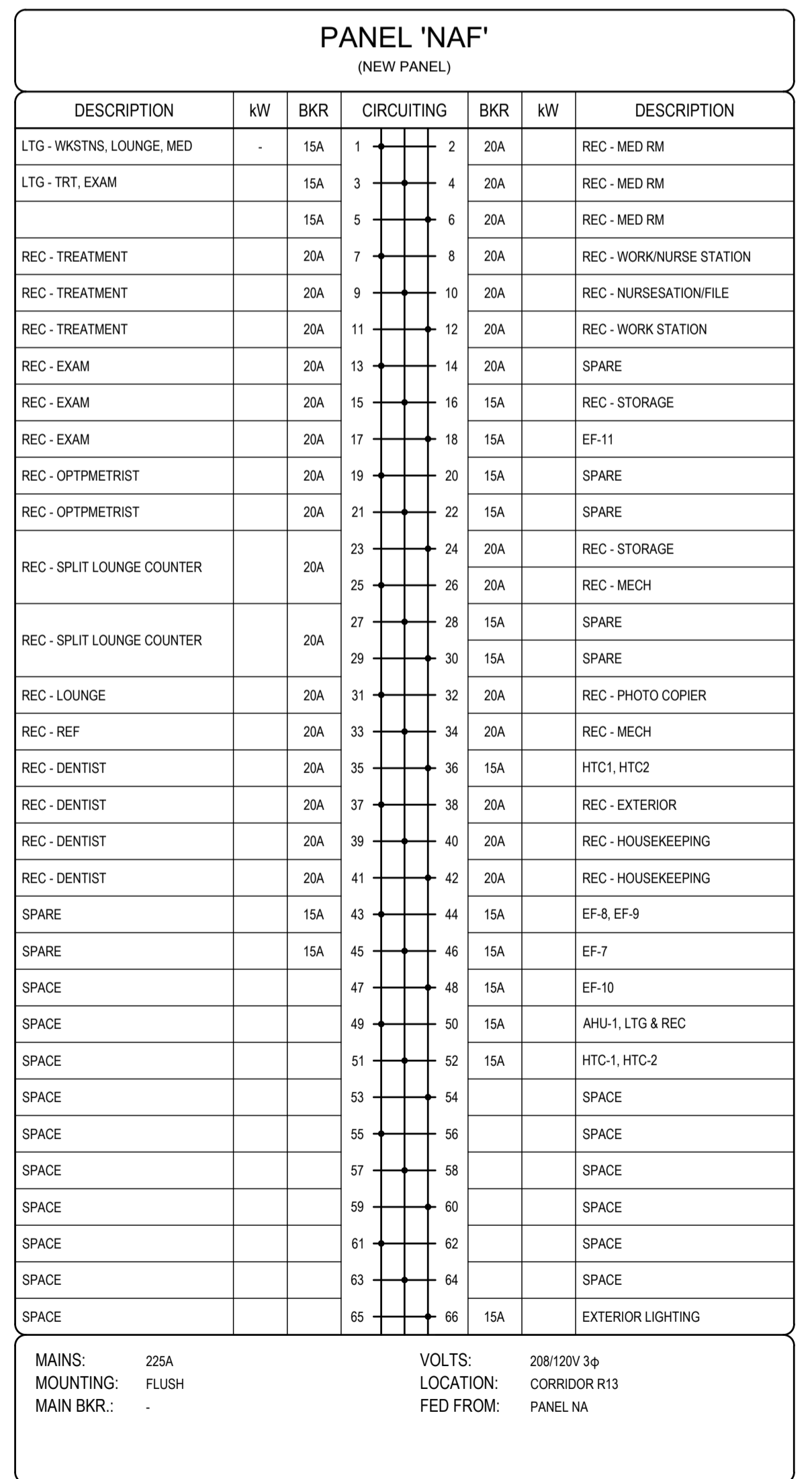
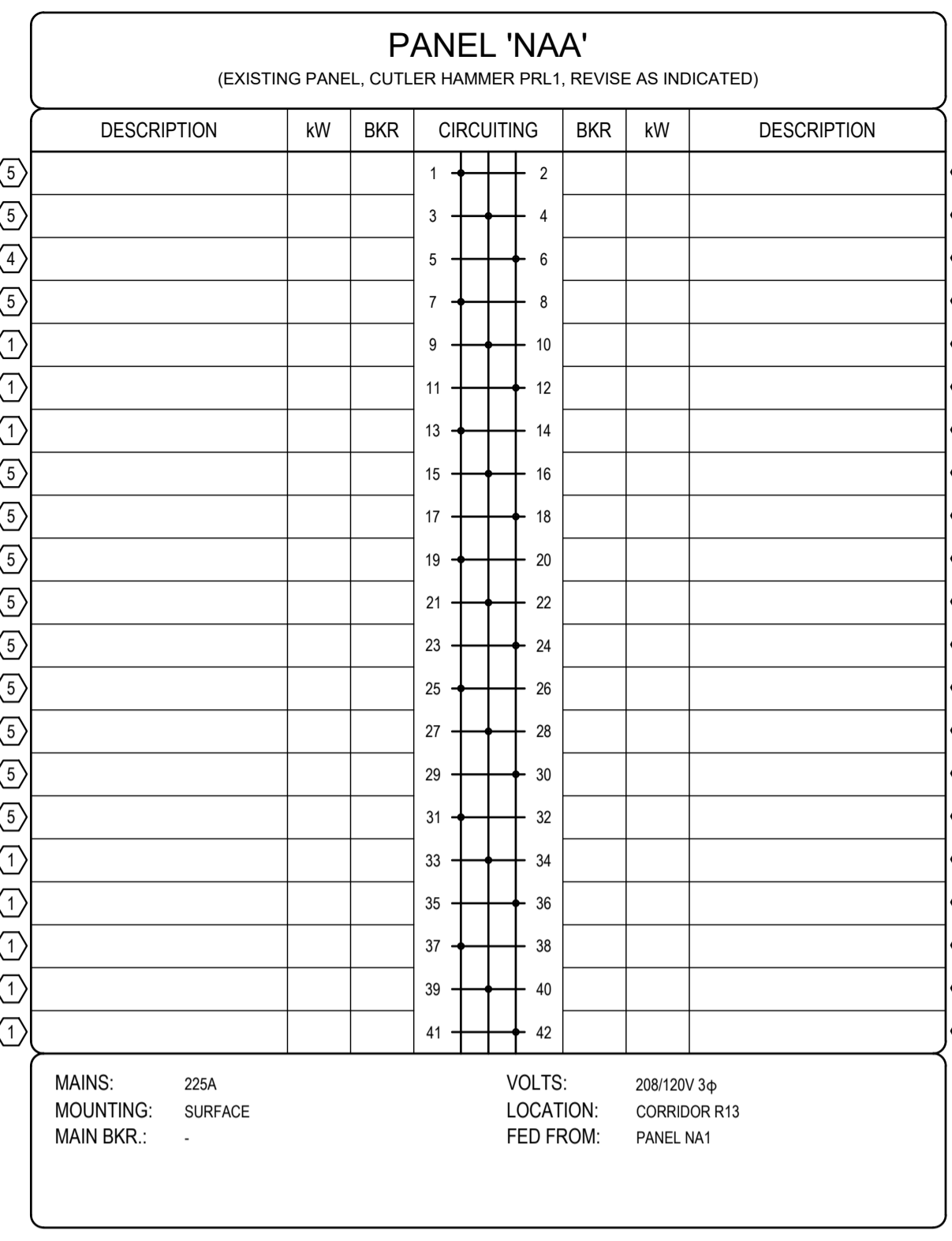
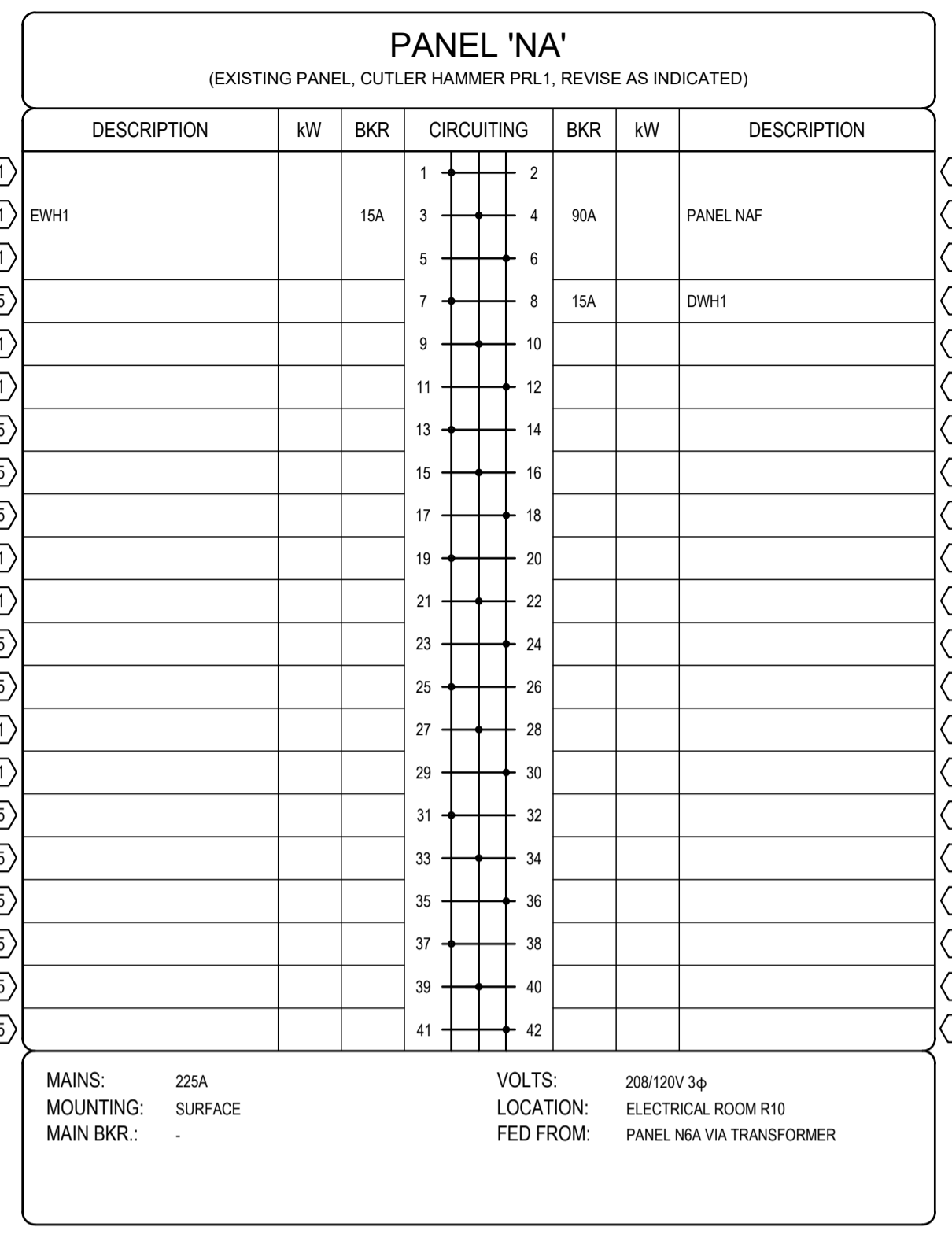
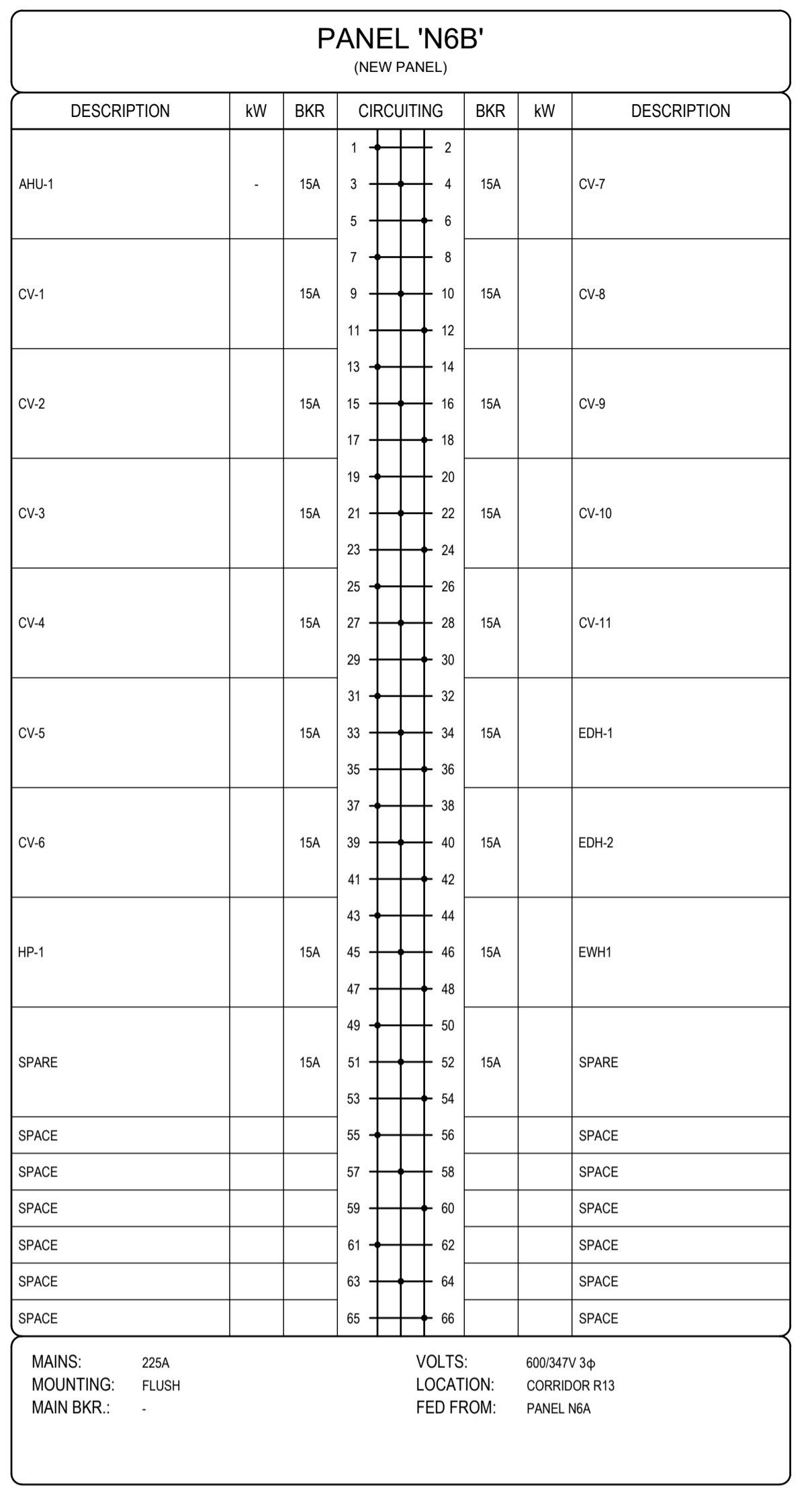
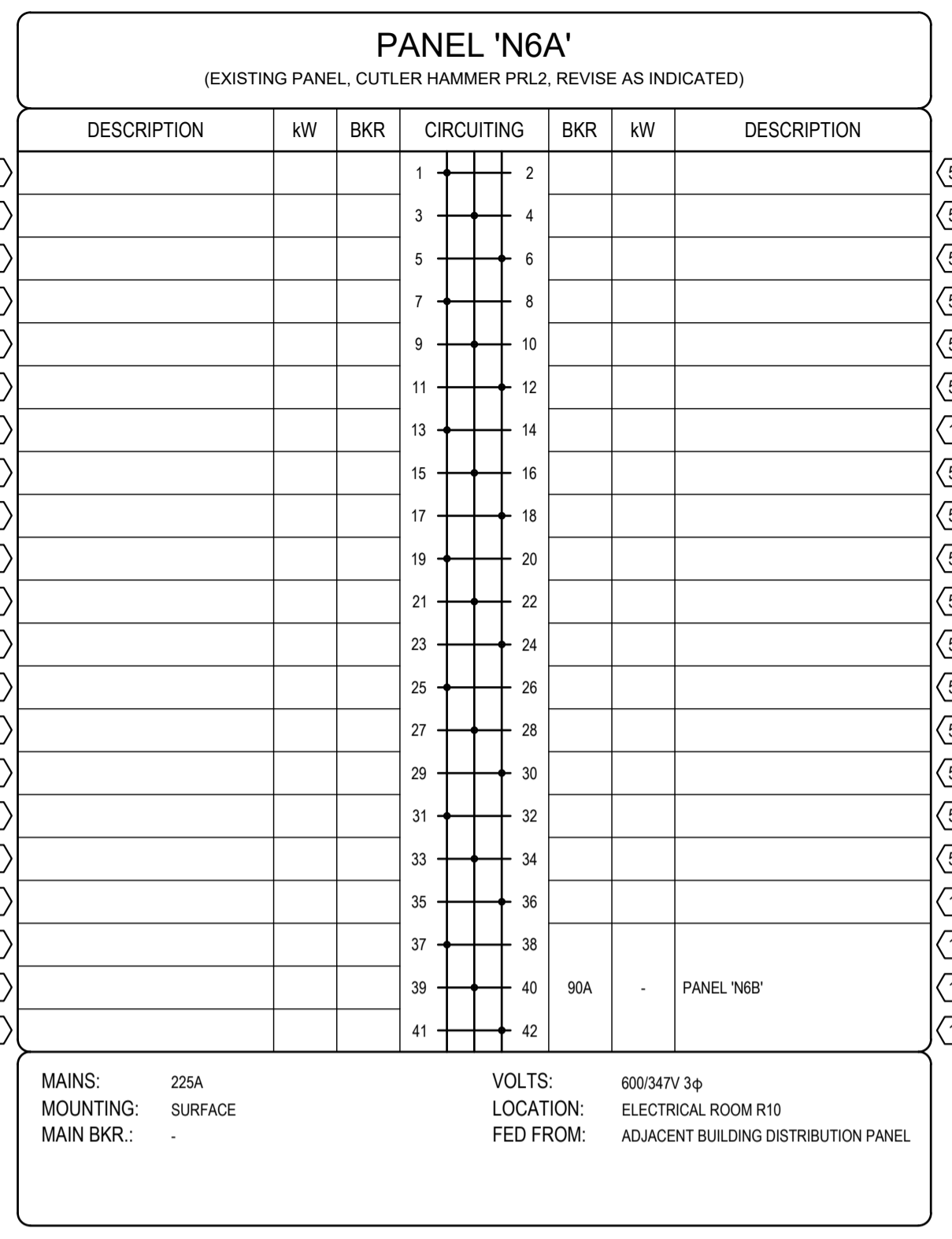
Regional Manager, Architectural and Engineering Services
 Gestionnaire régionale, Services d'architectural et de génie, TPSCG
PREETIPAL FAUL

Drawing Title/Titre du dessin
ELECTRICAL DETAILS & SCHEDULES

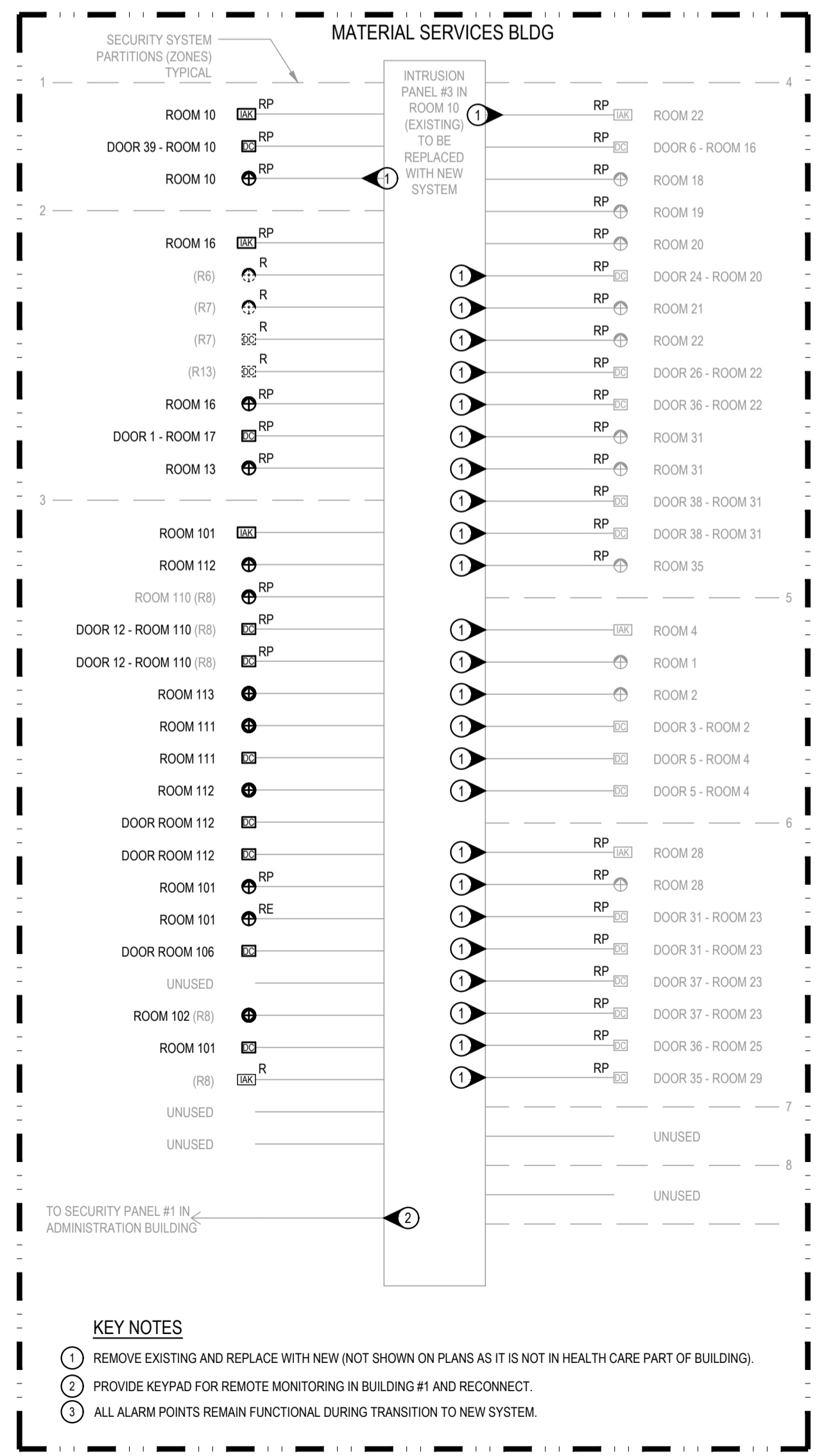
|--|



505 Burrard Street, Suite 950, Vancouver, BC V7X 1M4
604.569.6500 | www.aeseng.com
CALGARY | VANCOUVER | VICTORIA
AES PROJECT # 2-18-012



- NOTES:**
- EXISTING SPACE.
 - EXISTING SPARE BREAKER.
 - EXISTING CIRCUIT TO BE REVISED (MADE SPARE BY DEMOLITION).
 - EXISTING CIRCUIT TO REMAIN. NOTE THAT SOME LOAD MAY BE REMOVED FROM CIRCUIT.
 - EXISTING CIRCUIT TO REMAIN.



1 INTRUSION SYSTEM SCHEMATIC

Revision/Revision	Description/Description	Date/Date
7	ISSUED FOR TENDER	2021/04/08
6	ISSUED FOR COORDINATION	2021/03/19
5	ISSUED FOR BP APPLICATION	2021/02/26
4	ISSUED FOR TENDER	2018/11/15
3	ISSUED FOR 99% SUBMISSION	2018/09/27
2	ISSUED FOR 66% SUBMISSION	2018/06/28
1	ISSUED FOR 50% PROGRESS	2018/05/23

CORRECTIONAL SERVICE CANADA (CSC)

Project title/Titre du projet
33737 DEWDNEY TRUNK ROAD MISSION, B.C.

MINIMUM INSTITUTION EXPANSION OF HEALTH CARE

Consultant Signature Only

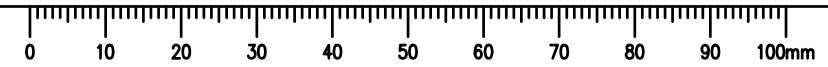
Designed by/Concept par
AES
Drawn by/Dessiné par
AES

PWSC Project Manager/Administrateur de Projets TPSGC
TONY TANG

Regional Manager, Architectural and Engineering Services
Gestionnaire régionale, Services d'architecture et de génie, TPSGC
PREETIPAL PAUL

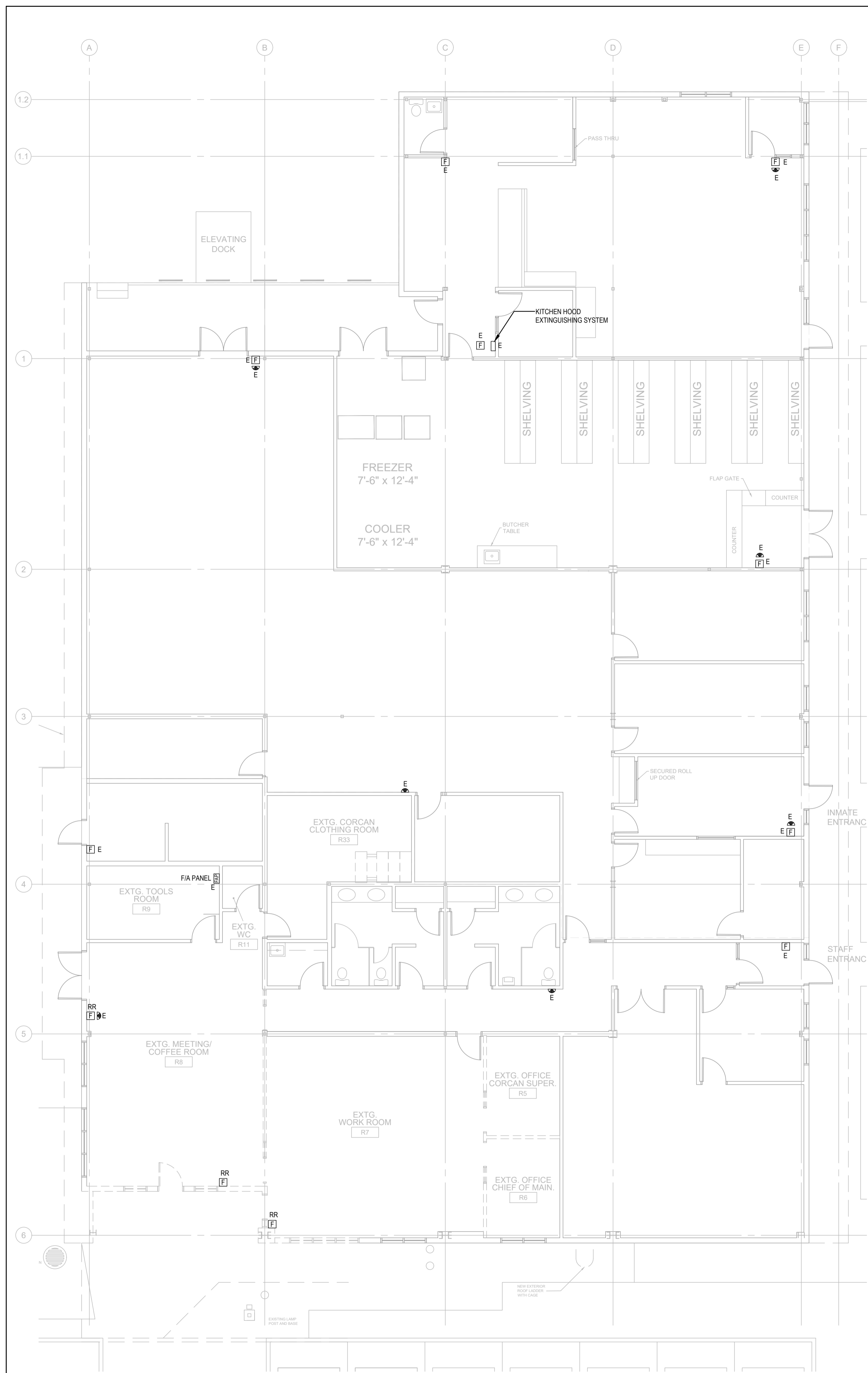
Drawing title/Titre du dessin
PANEL SCHEDULES & DETAILS

Project No./No. du projet	Sheet/Fauille	Revision no./La Révision no.
R.089145.001	E005	7

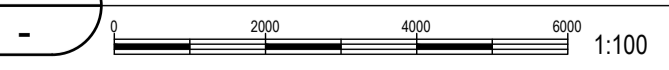




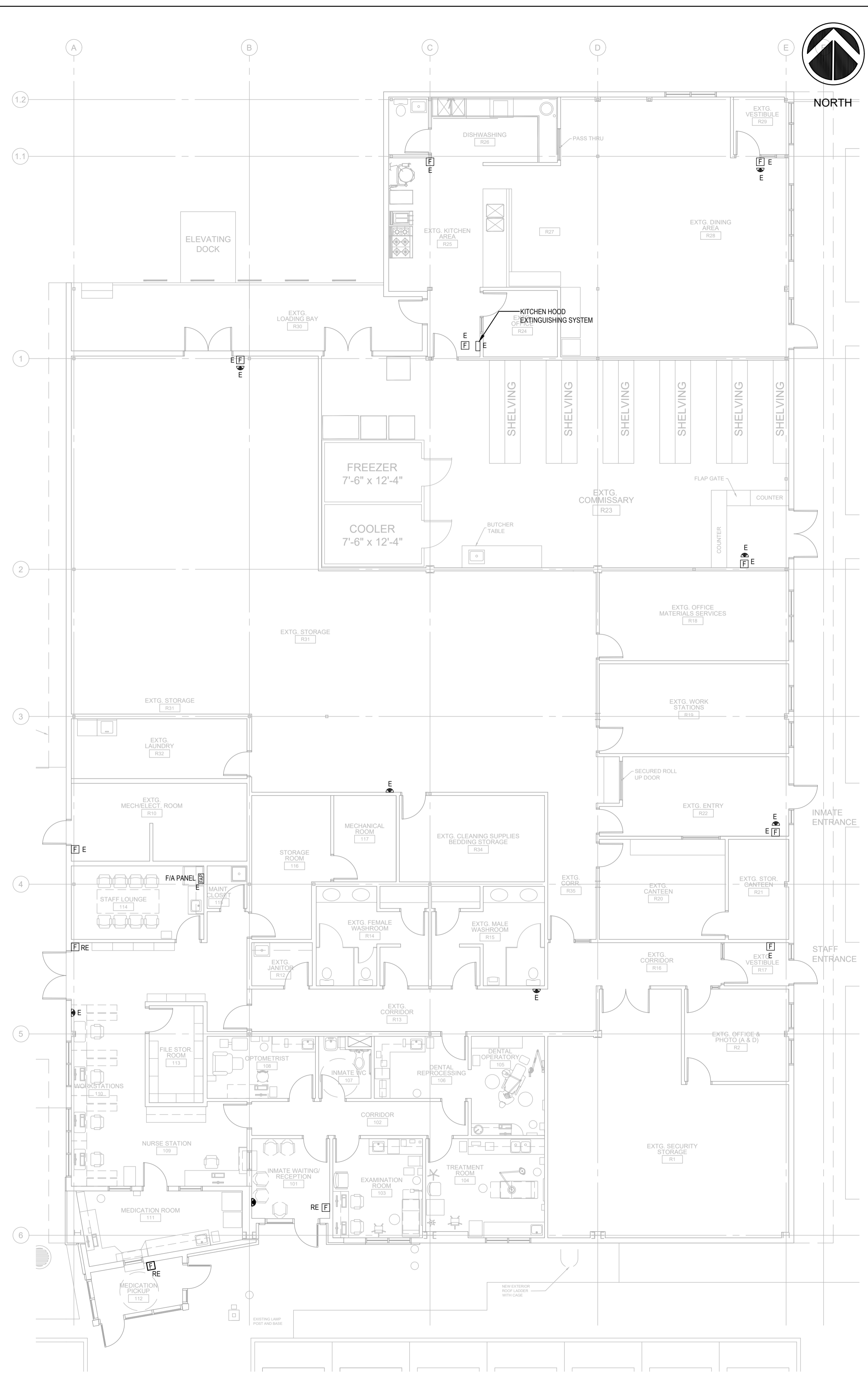
NORTH



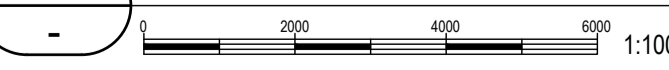
1 EXISTING BUILDING FIRE ALARM PLAN



NOTE:
ALL INITIATING AND SIGNALLING DEVICES WERE UPGRADED (CIRCA 2019). EXACT TYPE OF SIGNALLING DEVICES TO BE CONFIRMED ON SITE. IT IS INTENDED THAT EACH EXISTING SIGNALLING DEVICE REMAIN AS IS.



2 REVISED BUILDING FIRE ALARM PLAN



Revision/Revision	Description/Description	Date/Date
7	ISSUED FOR TENDER	2021/04/08
6	ISSUED FOR COORDINATION	2021/03/19
5	ISSUED FOR BP APPLICATION	2021/02/26
4	ISSUED FOR TENDER	2018/11/15
3	ISSUED FOR 90% SUBMISSION	2018/08/27
2	ISSUED FOR 66% SUBMISSION	2018/06/28
1	ISSUED FOR 50% PROGRESS	2018/05/23

CORRECTIONAL SERVICE CANADA (CSC)

Project title/Titre du projet
33737 DEWDNEY TRUNK ROAD MISSION, B.C.

MISSION MINIMUM INSTITUTION EXPANSION OF HEALTH CARE

Consultant Signature Only

Designed by/Concept par
AES

Drawn by/Dessiné par
AES

PWSC Project Manager/Administrateur de Projets TPSC
TONY TANG

Regional Manager, Architectural and Engineering Services
Gestionnaire régionale, Services d'architecture et de génie, TPSC
PREETIPAL PAUL

Drawing title/Titre du dessin
BUILDING FIRE ALARM PLANS

Project No./No. du projet R.089145.001	Sheet/Fauille E006	Revision no./Révision no. 7
--	------------------------------	---------------------------------------

