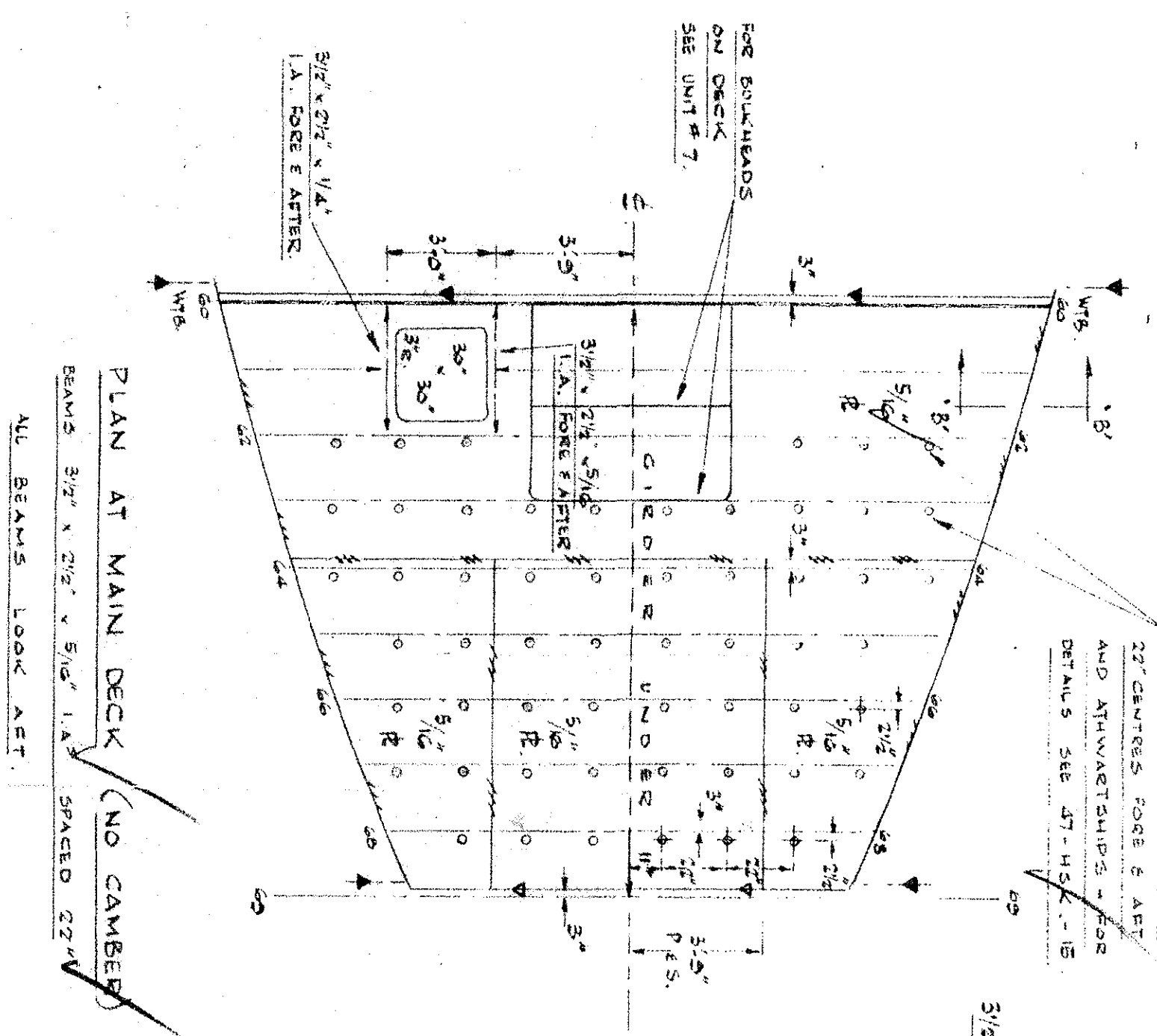
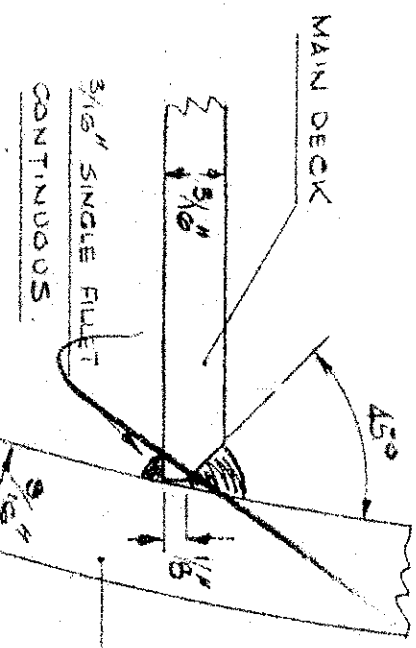


DETAIL OF T.B.
1/2" ONE FOOT

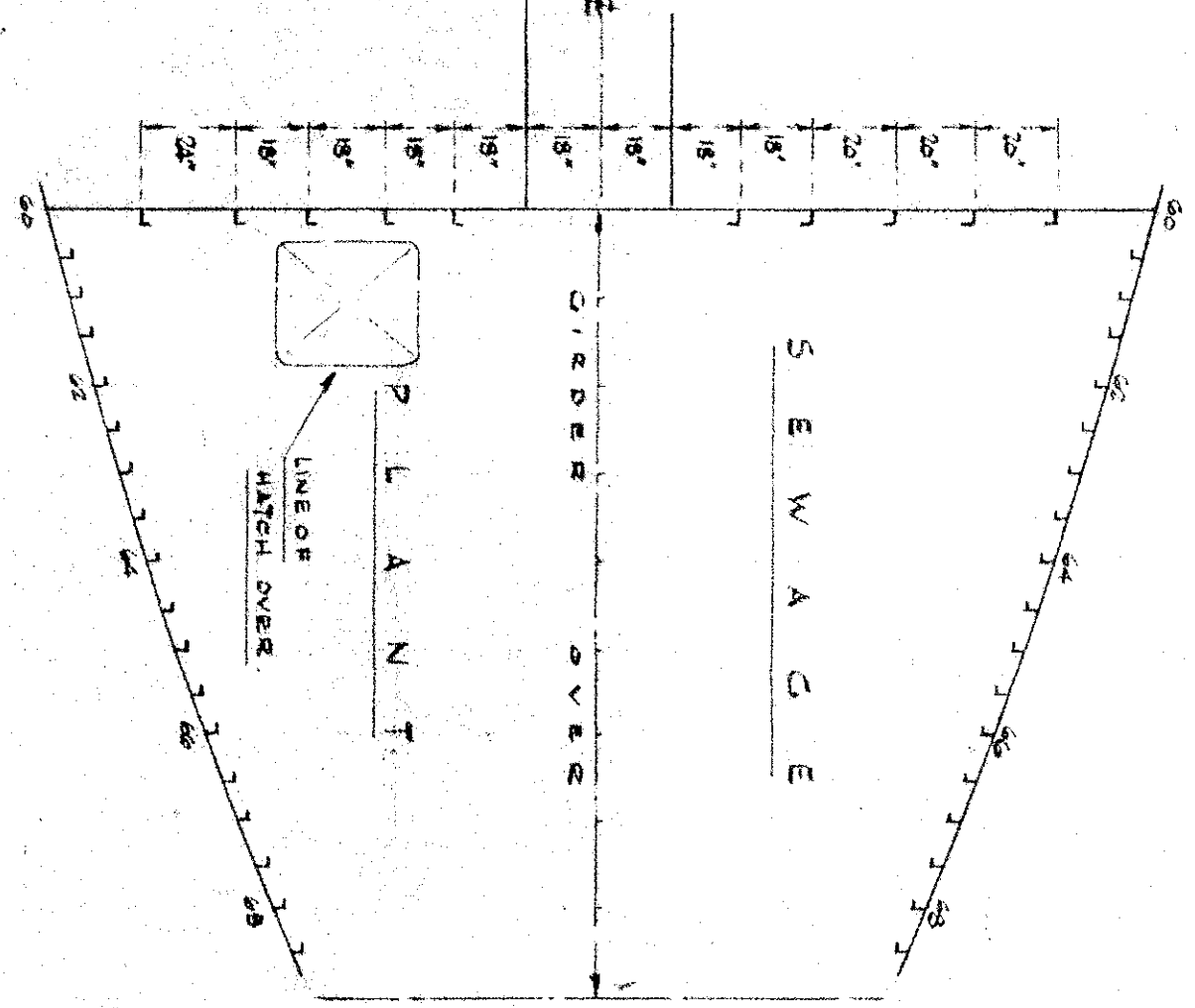
SECTION AT FRAME C5
LOOKING FORWARD



PLAN AT MAIN DECK (NO CAMBER)
BASED 3/4" x 3/4" x 5/8" I.A. SPACED 22" W

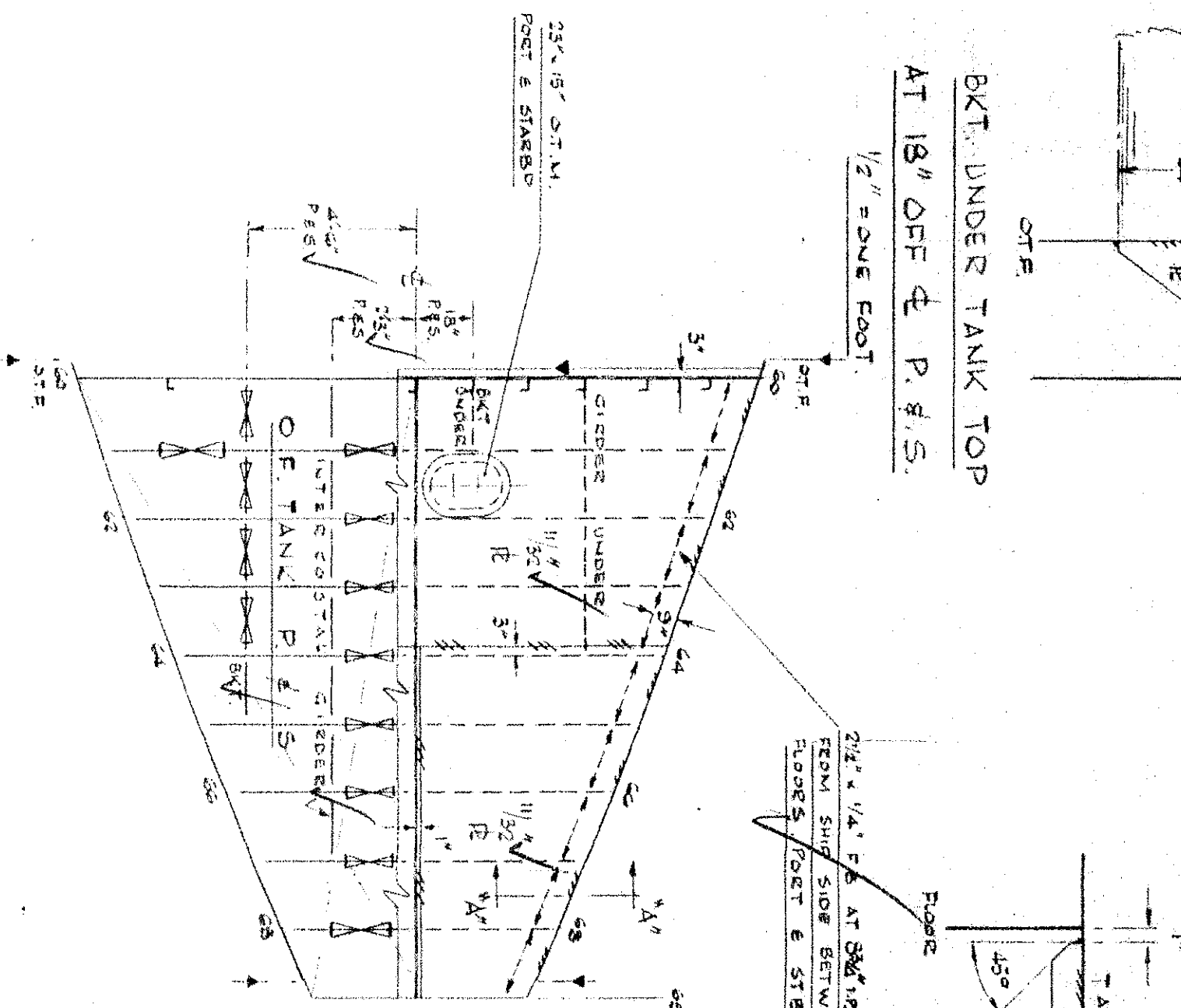


SECTION "B-B"
FULL SIZE

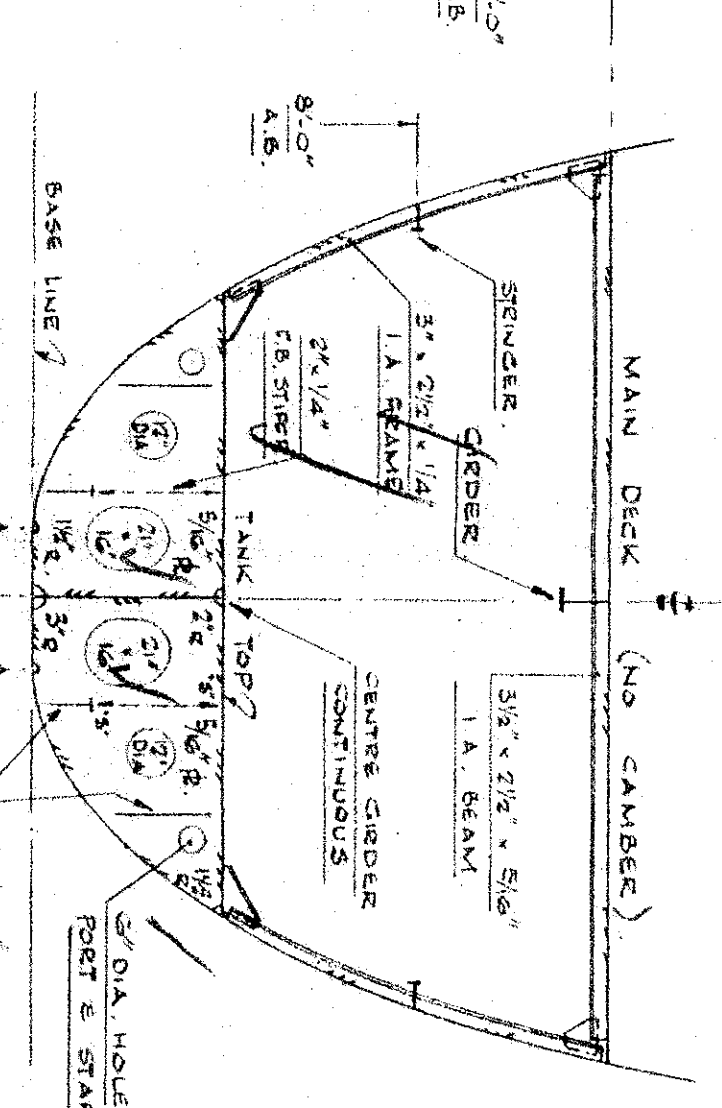
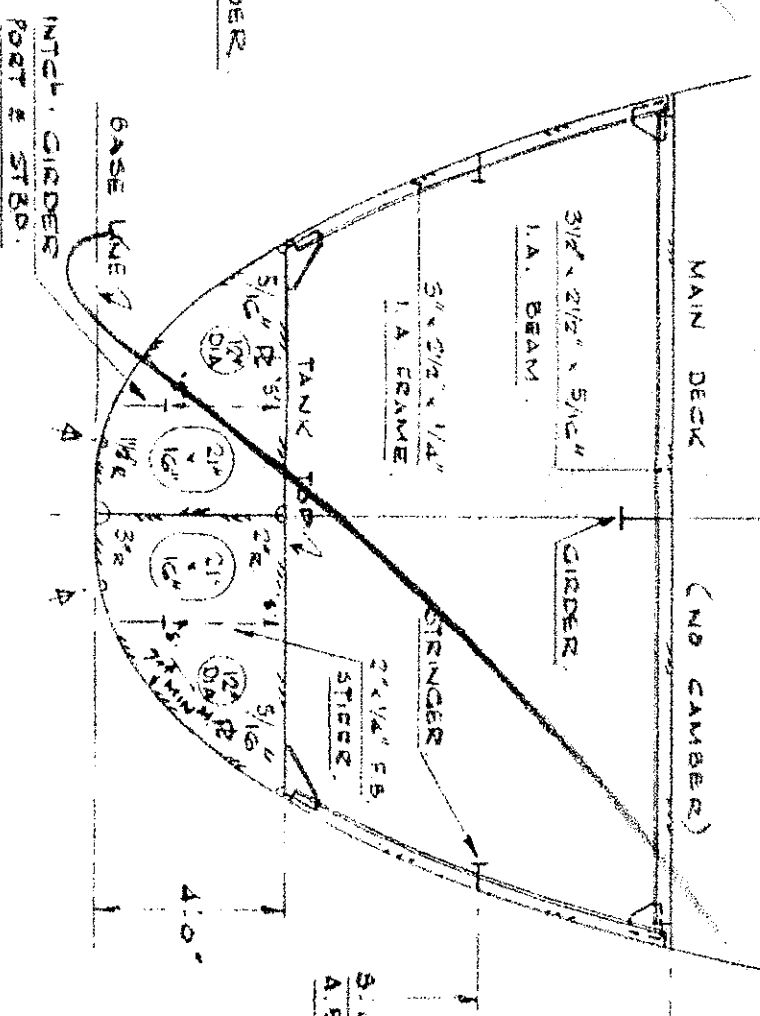


PLAN UNDER MAIN DECK

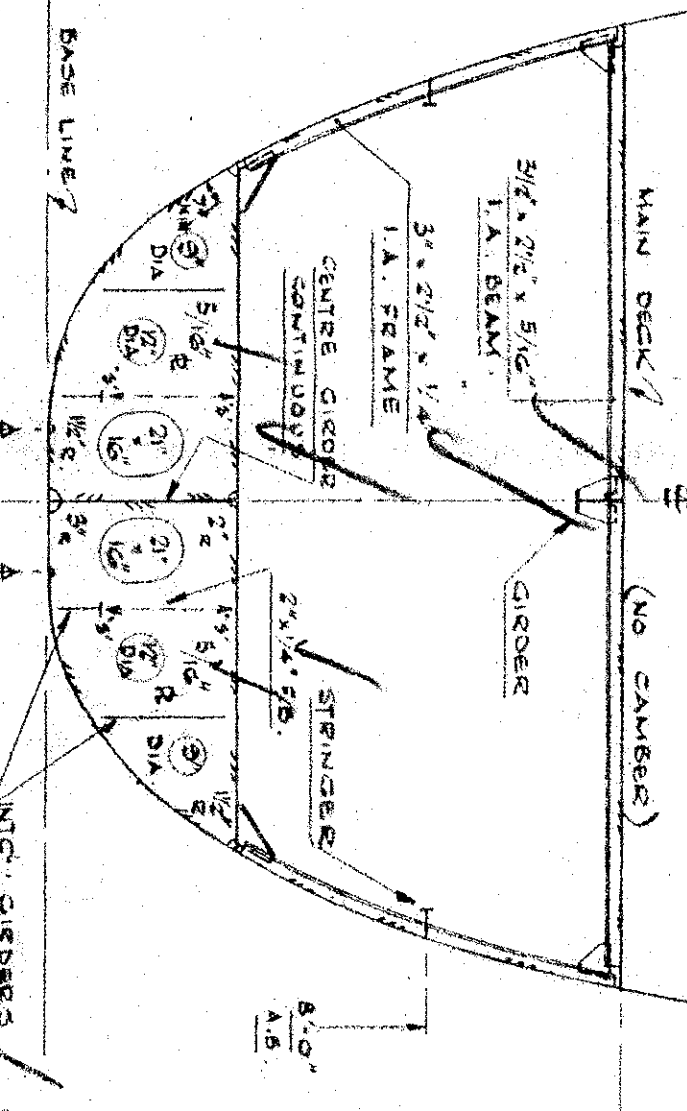
BKT UNDER TANK TOP
AT 18" OFF C.P. & S.



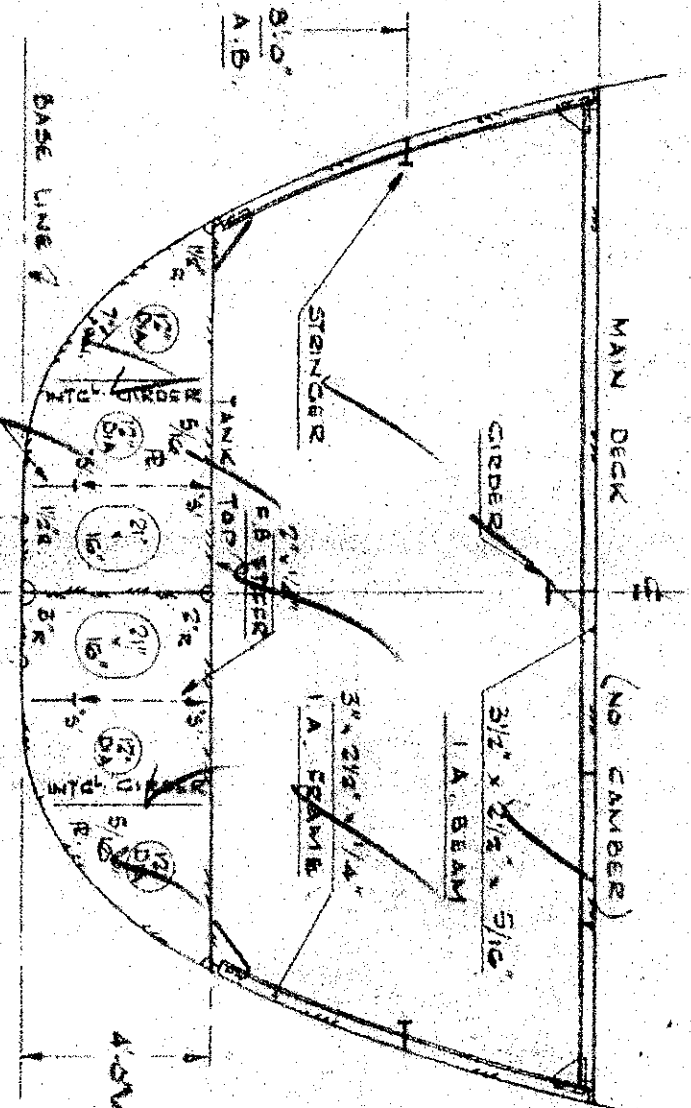
PLAN AT TANK TOP
STRAP SIDE SHOWN WITHOUT PLATING



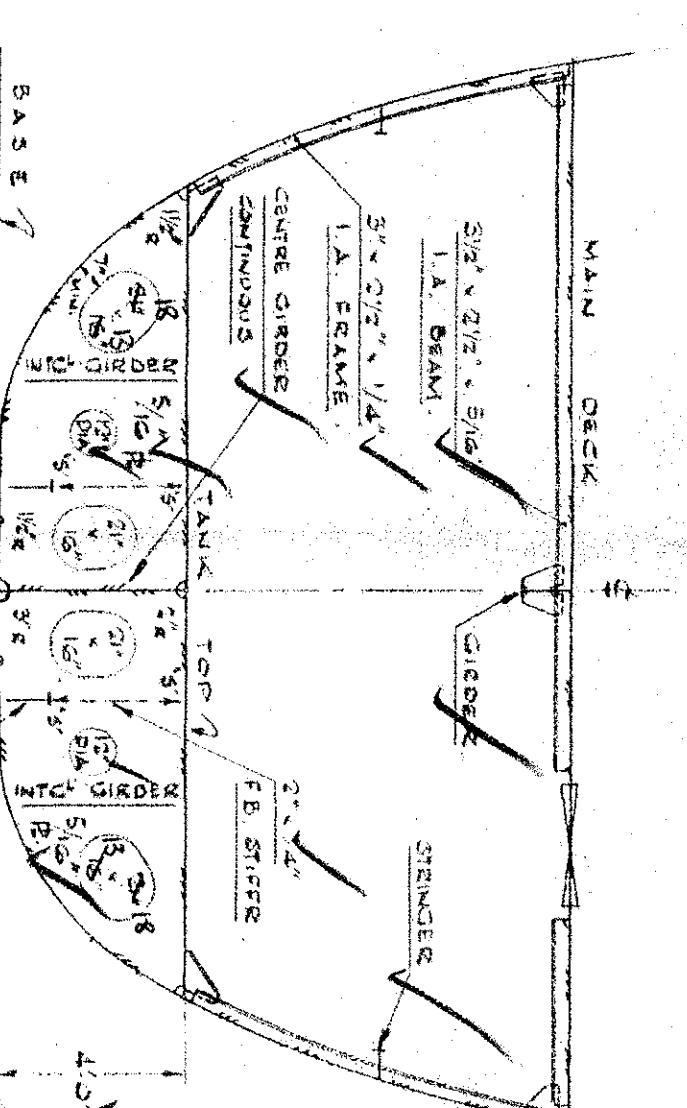
SECTION AT FRAME C4
LOOKING FORWARD



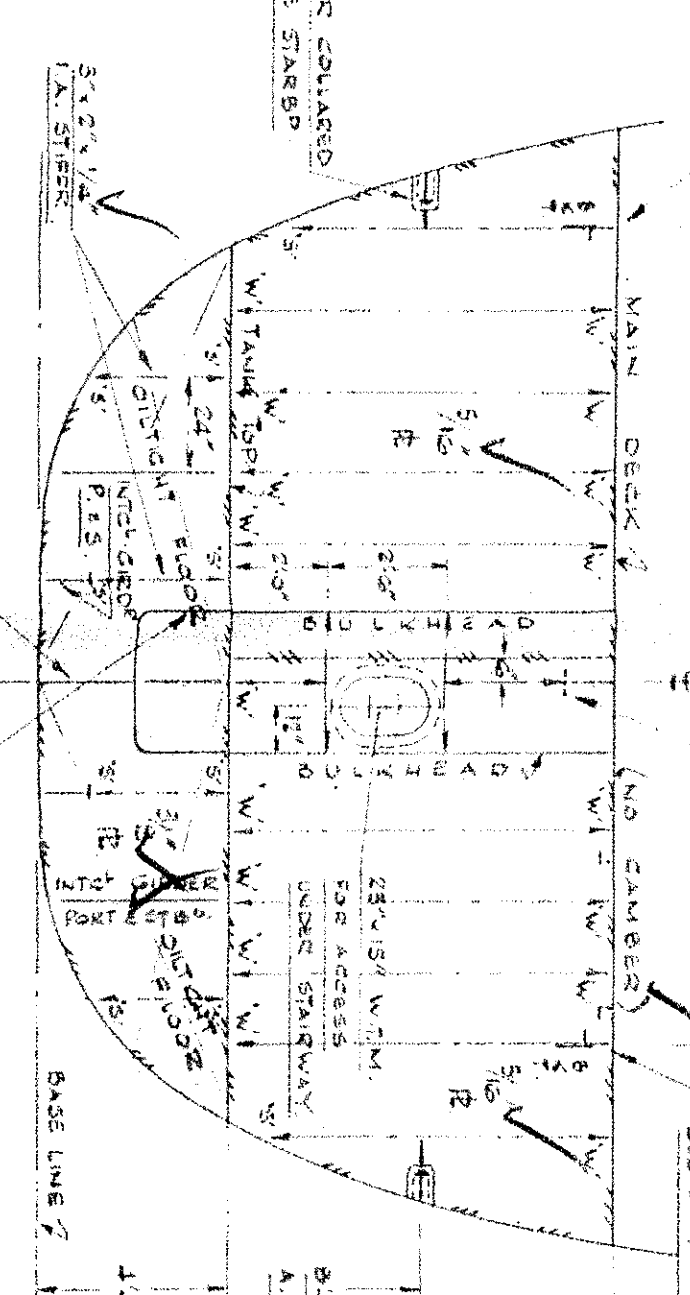
SECTION AT FRAME C3
LOOKING FORWARD



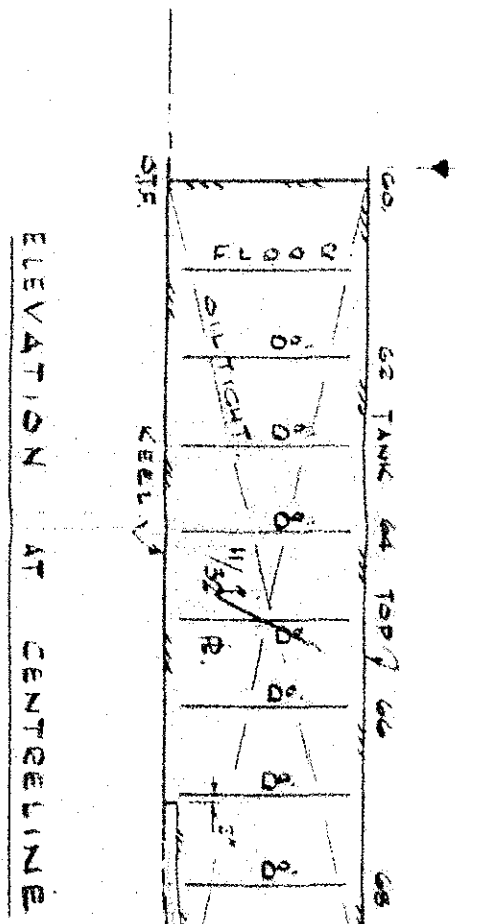
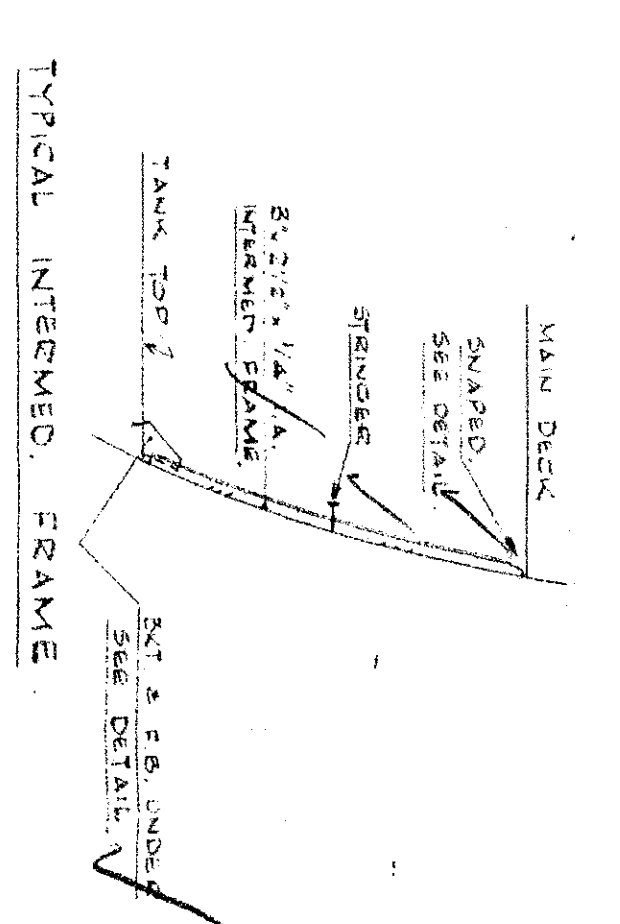
SECTION AT FRAME C2
LOOKING FORWARD



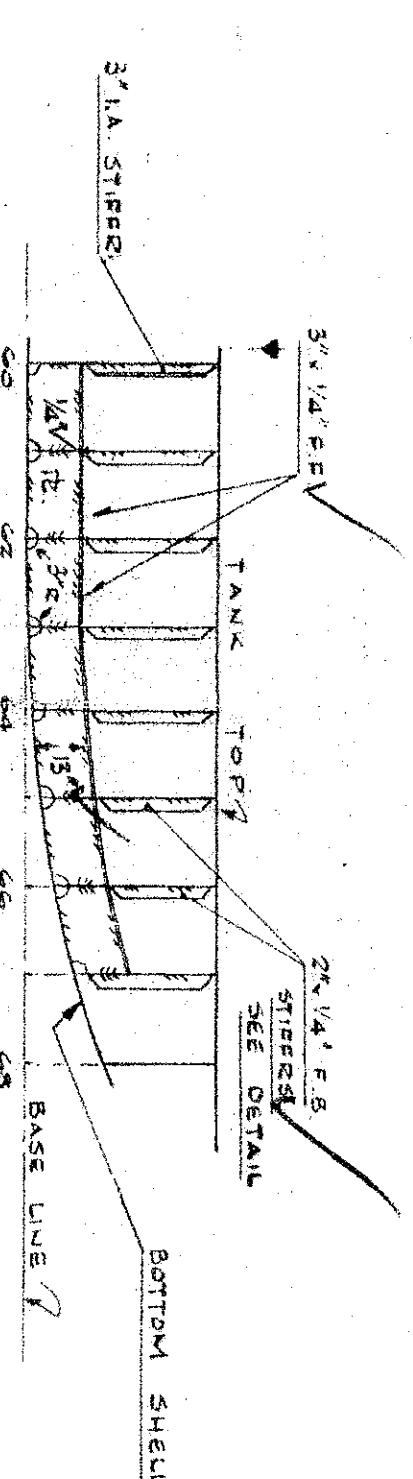
SECTION AT FRAME C1
LOOKING FORWARD



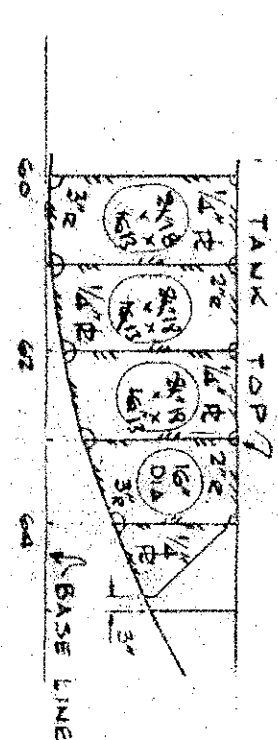
W.T. BULKHEAD ON FRAME C0
LOOKING FORWARD



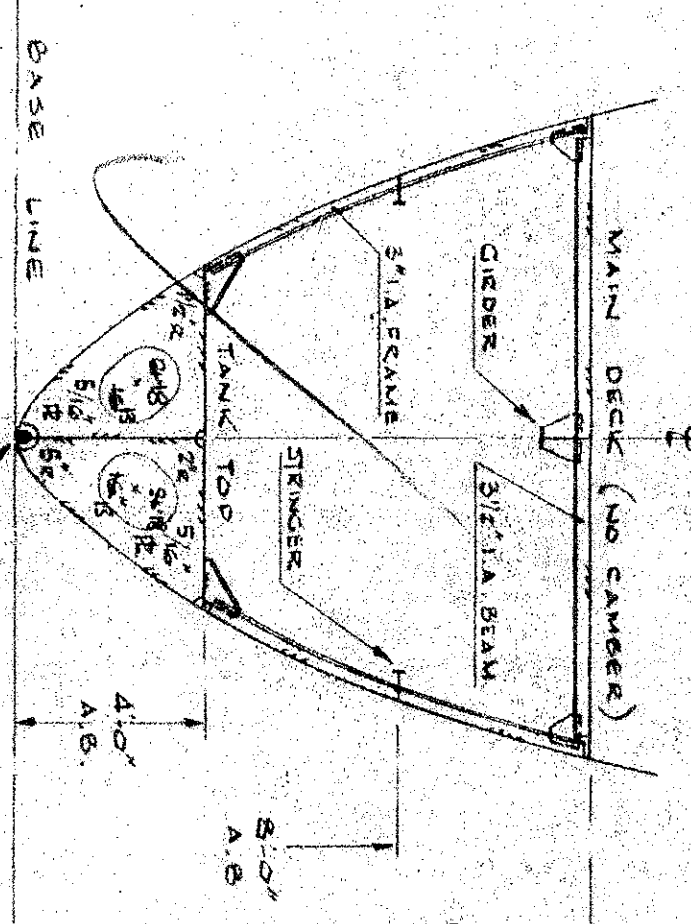
ELEVATION AT CENTERLINE



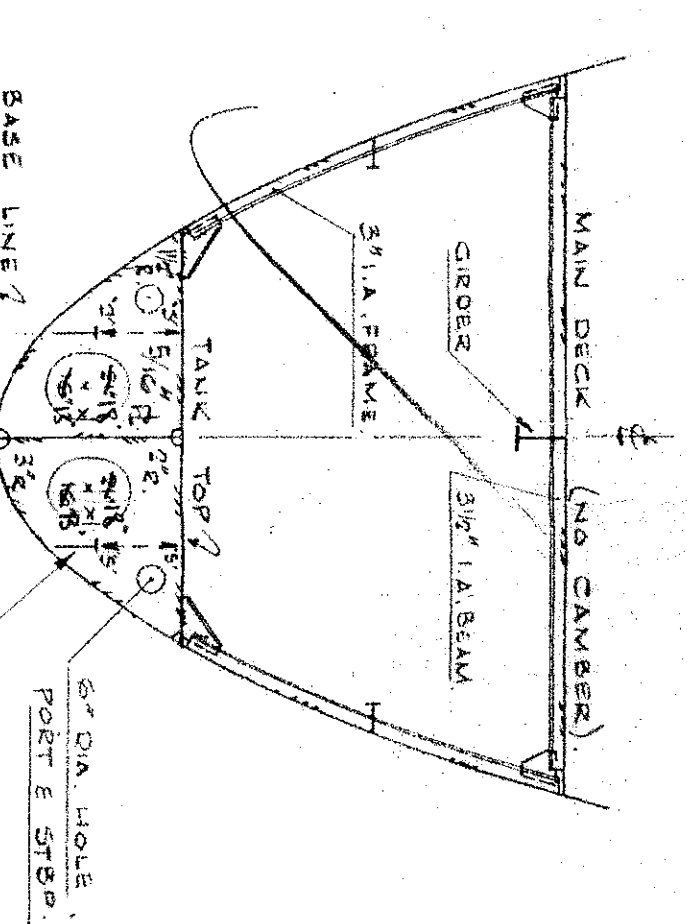
INTERCOSTAL GIRDER AT 7.5" OFF C.P. & S.
POST & STABOARD



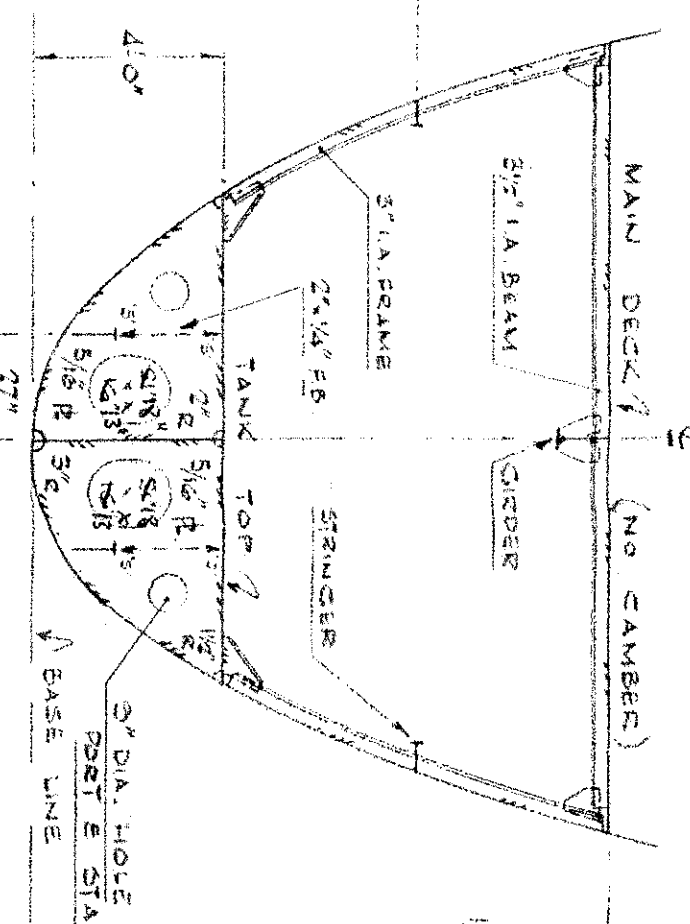
INTERCOSTAL GIRDER AT 4.5" OFF C.P. & S.
POST & STABOARD



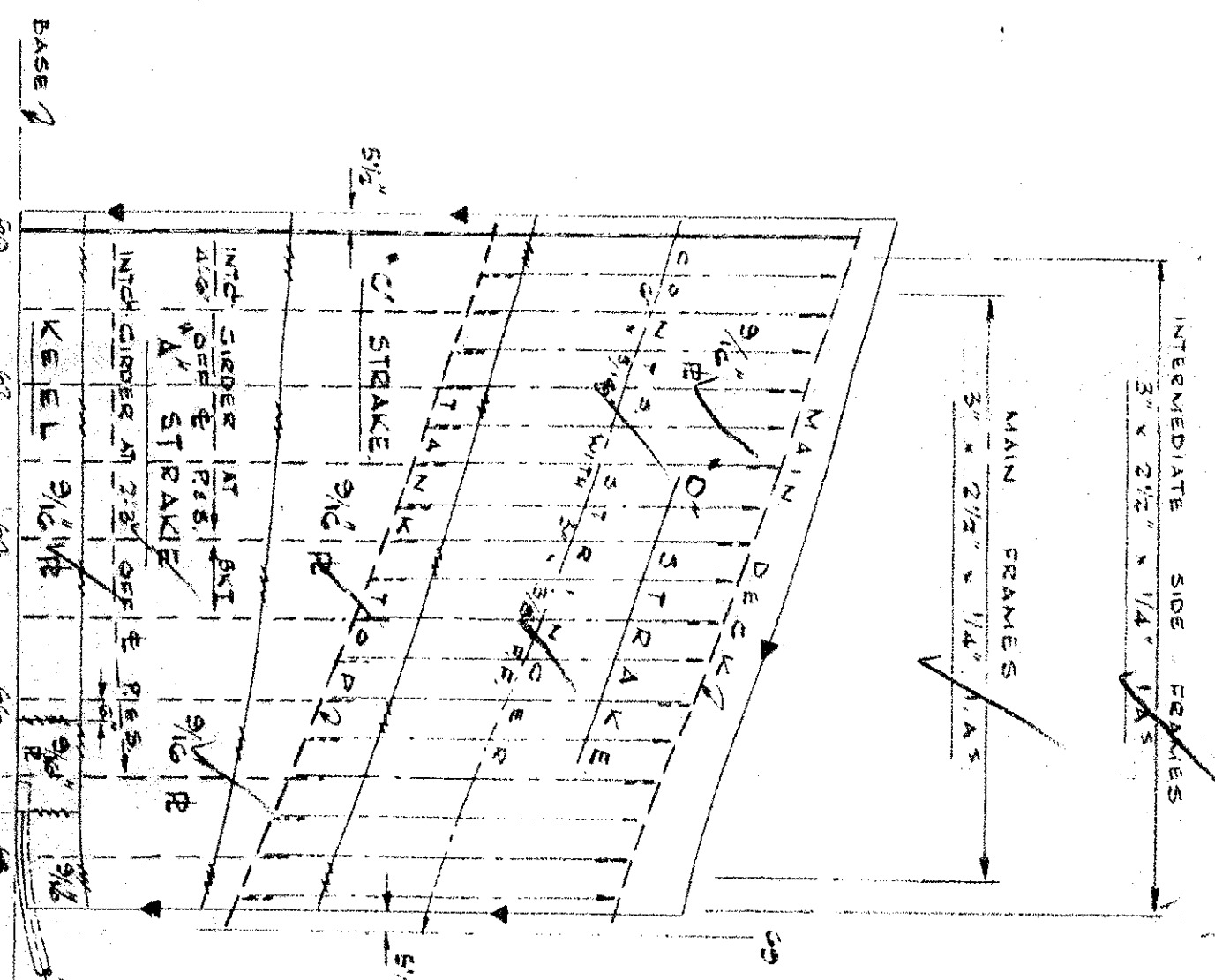
SECTION AT FRAME C8
LOOKING FORWARD



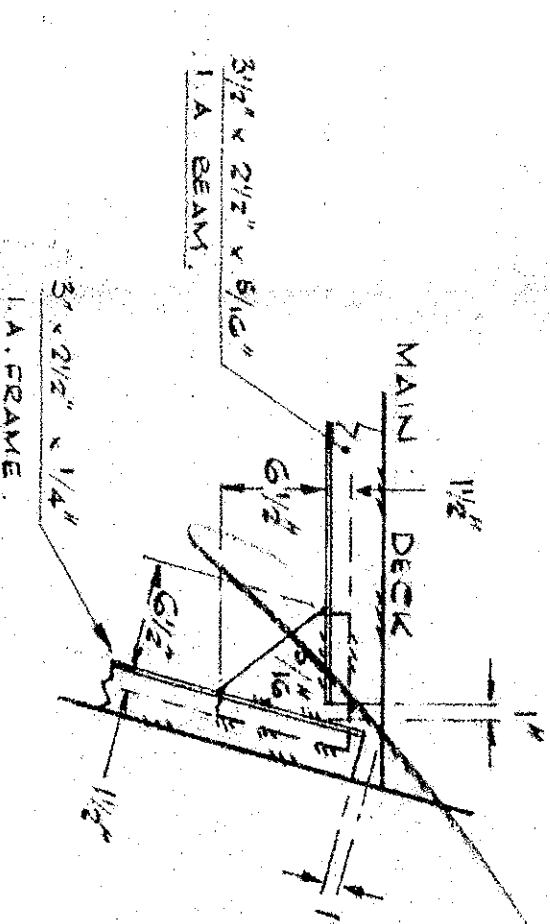
SECTION AT FRAME C7
LOOKING FORWARD



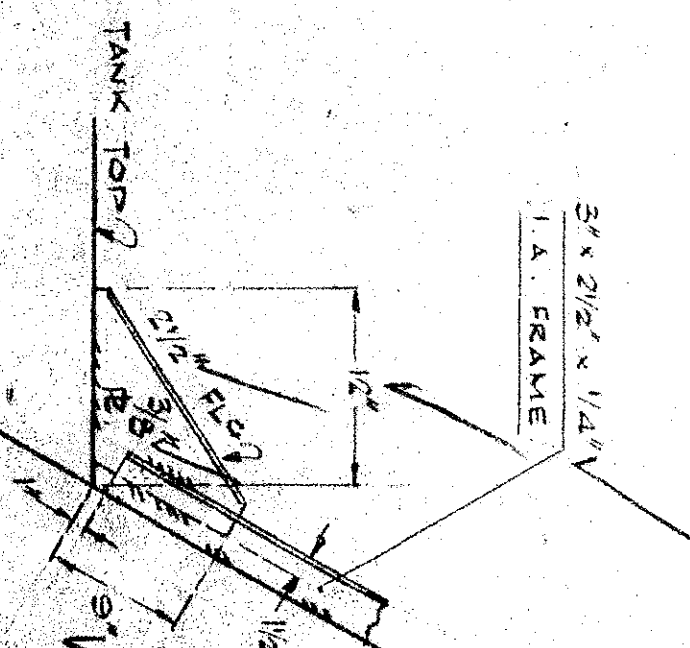
SECTION AT FRAME C6
LOOKING FORWARD



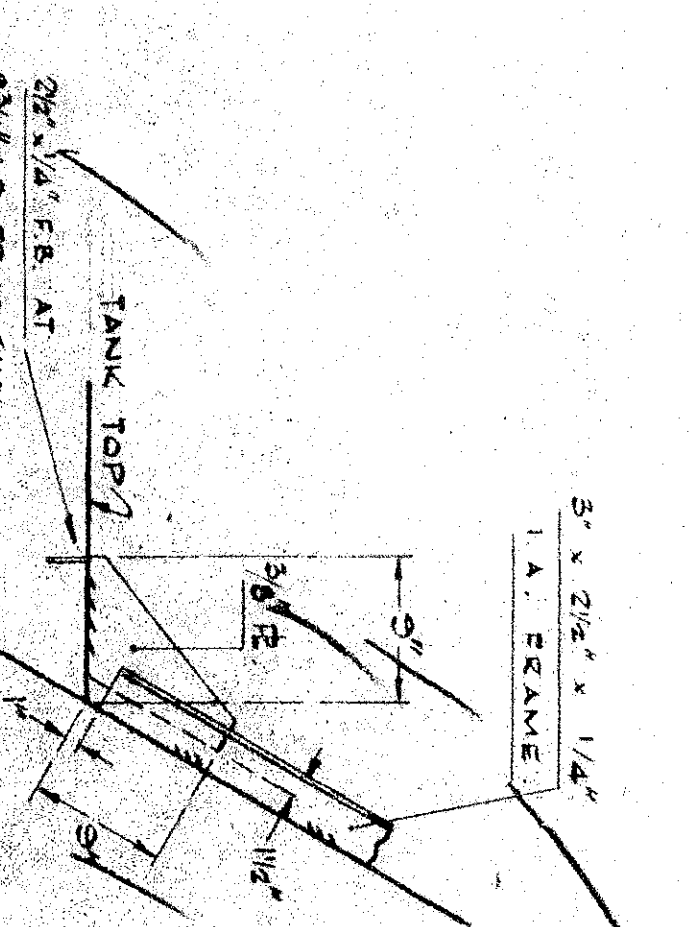
SHELL EXPANSION
DRAWN FOR STABOARD SIDE, LOOKING INBOARD
FRAMES SPACED 22" AND LOOK AFT



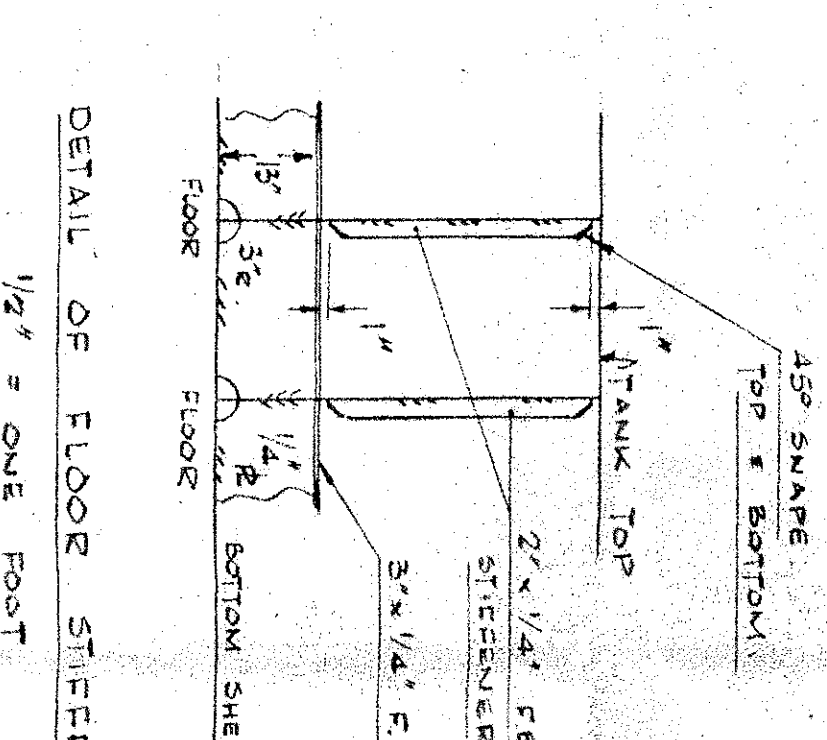
BEAM KNEE
FES. C1, C8 INCL.
1/2" ONE FOOT



FRAME BKT TO TANK TOP
FES. C1, C8 INCL.
1/2" ONE FOOT



INTERMEDIATE FRAME BKT TO TANK TOP
FES. C0/2 - C8 1/2 INCL.
1/2" ONE FOOT



DETAIL OF FLOOR STEER
1/2" ONE FOOT

WELDING	THICK	DOCK	STANDARD	UNIT
MAIN & WELDED FRAMES TO SHELL	1/4"	3/16"		
STRINGS TO SHELL	5/16"	3/16"		
CHAINS TO SHELL	1/2"	3/16"		
CHAINS TO TANK TOP	1/4"	3/16"		
FLOORS TO SHELL (OUTER)	3/8"	3/16"		
FLOORS TO SHELL (INNER)	3/8"	3/16"		
FLOORS TO CHAINS	3/8"	3/16"		
BOUNDARIES OF WT BULKHEAD	3/8"	3/16"		
STRINGS TO DECK	1/4"	3/16"		
BEAMS TO TANK TOP	1/4"	3/16"		
FLOOR STRINGS	1/4"	3/16"		
GIRDER END BUTTS	3/8"	3/16"		
BEAM BUTTS	3/8"	3/16"		
FRAME BUTTS	3/8"	3/16"		
TRIPPING BUTTS	3/8"	3/16"		

NOTES -
1. DIMENSIONS SHOWN
2. MAIN FRAMES TO HAVE ITEM NO. 1
3. MAIN DECK BEAMS TO HAVE ITEM NO. 2
4. BE PREPARED BY THE FRAME NO.
5. MAIN FRAME C1 IS 13 1/2"

APPROVED
MONTREAL COPY
1 AUG 15 1957
LUNDY
A.P. DE SOUZA
PORT WELLS
DRY DOCKS LTD.
ST. CATHARINES ONTARIO

UNIT # 3
FRAMES C0 - C8
PORT WELLS
DRY DOCKS LTD.
ST. CATHARINES ONTARIO

ACCOUNT NO.
DATE 1/7 ONE FOOT
DRAWN BY W. B. DICKS
CHECKED BY
HULL NO. 47
PLAN NO. 47-14-15