

5.0 m LIGHT A-FRAME

QTY.	DESCRIPTION	DWG.	SUPPLIER
1	1.5m A-FRAME TOP	3182-2	FABRICATOR
1	CAR HOOK ASSEMBLY	3182-5	FABRICATOR
12	M16x40 A325M GALV. STRUCTURAL BOLTS	3182-1	FABRICATOR
12	M16x120 A325M GALV. STRUCTURAL BOLTS	3182-1	FABRICATOR
10	U-BOLTS FOR BRACKET	3182-1	FABRICATOR
2	FOOTINGS OR FOOTING PLATES (FOR CRIBBING)	3182-3	FABRICATOR
1	3.5m LEG ASSEMBLY	3182-3	FABRICATOR
1	2.38m LATERAL BRACE	3182-1	FABRICATOR
1	PLATFORM ASSEMBLY FOR 5m A-FRAME	3182-4	FABRICATOR
4	LADDER BRACKET ASSEMBLY	3136-13	FABRICATOR
2	3m LADDER	3136-11	FABRICATOR
1	LD LADDER GATE ASSEMBLY	3136-18	FABRICATOR
4	1/2"-13 1-1/2"LG. ASTM - A325M GALV. HEX BOLTS	-	FABRICATOR
4	1/2"-13 ASTM A325M GALV. HEX NUTS	-	FABRICATOR

4.0 m LIGHT A-FRAME

QTY.	DESCRIPTION	DWG.	SUPPLIER
1	1.5m A-FRAME TOP	3182-2	FABRICATOR
1	CAR HOOK ASSEMBLY	3182-5	FABRICATOR
12	M16x40 A325M GALV. STRUCTURAL BOLTS	3182-1	FABRICATOR
12	M16x120 A325M GALV. STRUCTURAL BOLTS	3182-1	FABRICATOR
10	U-BOLTS FOR BRACKET	3182-1	FABRICATOR
2	FOOTINGS OR FOOTING PLATES (FOR CRIBBING)	3182-3	FABRICATOR
1	2.5m LEG ASSEMBLY	3182-3	FABRICATOR
1	1.98m LATERAL BRACE	3182-1	FABRICATOR
1	PLATFORM ASSEMBLY FOR 4m A-FRAME	3182-4	FABRICATOR
3	LADDER BRACKET ASSEMBLY	3136-13	FABRICATOR
1	5m LADDER	3136-12	FABRICATOR
1	LD LADDER GATE ASSEMBLY	3136-18	FABRICATOR

3.0 m LIGHT A-FRAME

QTY.	DESCRIPTION	DWG.	SUPPLIER
1	1.5m A-FRAME TOP	3182-2	FABRICATOR
1	CAR HOOK ASSEMBLY	3182-5	FABRICATOR
12	M16x40 A325M GALV. STRUCTURAL BOLTS	3182-1	FABRICATOR
10	M16x120 A325M GALV. STRUCTURAL BOLTS	3182-1	FABRICATOR
8	U-BOLTS FOR BRACKET	3182-1	FABRICATOR
2	FOOTINGS OR FOOTING PLATES (FOR CRIBBING)	3182-3	FABRICATOR
1	1.5m LEG ASSEMBLY	3182-3	FABRICATOR
1	1.54m LATERAL BRACE	3182-1	FABRICATOR
3	LADDER BRACKET ASSEMBLY	3136-13	FABRICATOR
1	4m LADDER	3136-11	FABRICATOR

1.5 m LIGHT A-FRAME

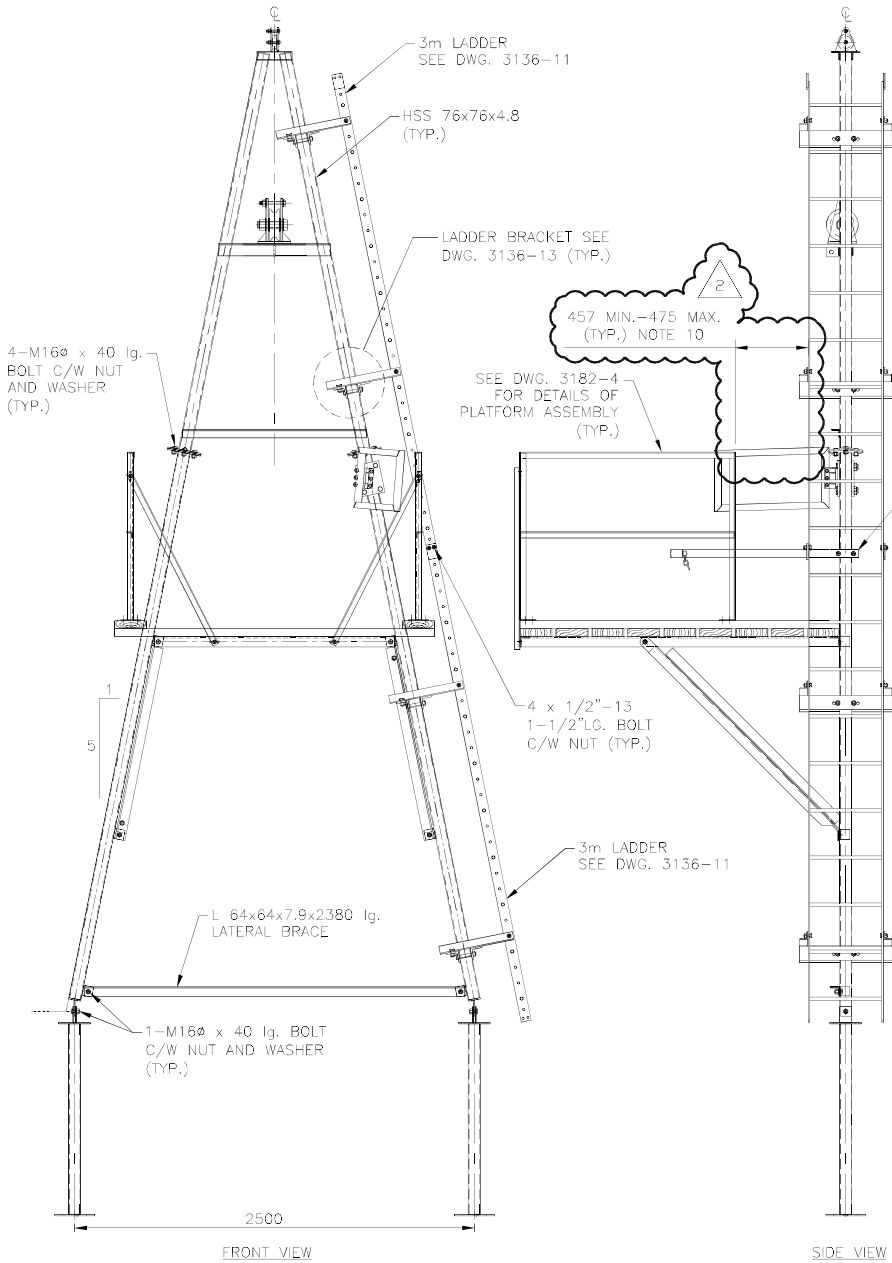
QTY.	DESCRIPTION	DWG.	SUPPLIER
1	1.5m A-FRAME TOP	3182-2	FABRICATOR
2	1.5m A-FRAME SPLICE PLATES	3182-2	FABRICATOR
2	FOOTINGS OR FOOTING PLATES (FOR CRIBBING)	3182-3	FABRICATOR
1	1.15m LATERAL BRACE	3182-2	FABRICATOR

NOTES:

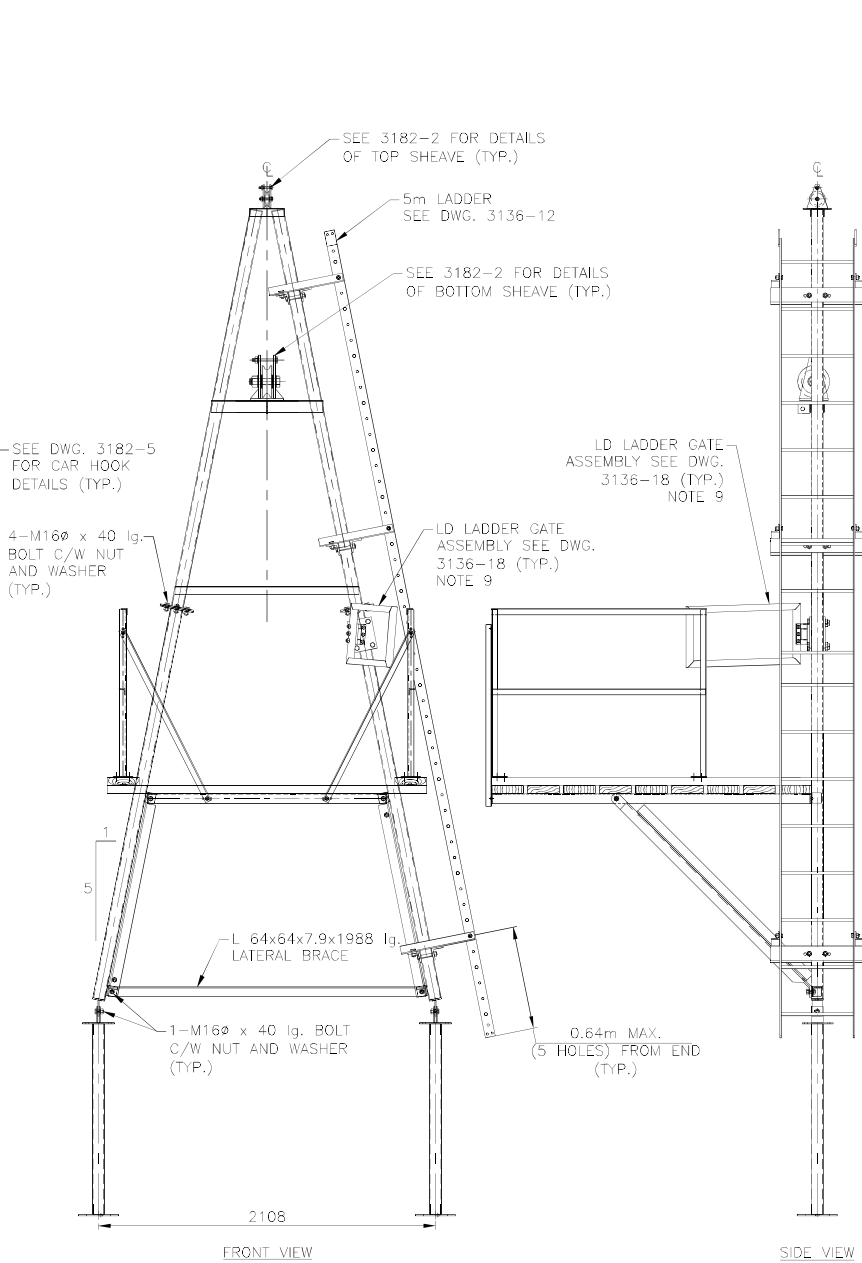
1. ALL STEEL SHALL CONFORM TO CSA G40.21M STRUCTURAL QUALITY STEEL.
2. ALL PARTS TO BE HOT DIP GALVANIZED AS PER ASTM A123/A123M.
3. ALL NUTS AND BOLTS TO BE M16, A325M, GALVANIZED, UNLESS NOTED OTHERWISE.
4. ALL BOLT HOLES TO BE DRILLED 2mm LARGER THAN BOLTS UNLESS NOTED OTHERWISE.
5. THIS STRUCTURE IS DESIGNED FOR SPANS UP TO 150m WITH MAX. A-FRAME HEIGHT = 5m IN AREAS NOT SUBJECT TO HEAVY ICE OR SNOW LOADS OVER 4.5kN/m
6. ALL DIMENSIONS IN MILLIMETRES UNLESS NOTED OTHERWISE.
7. ALL TOLERANCES SHOULD BE CHECKED PRIOR TO SHIPMENT.
8. LADDER BRACKET SPACING; 3.0m MAX. AND 0.64m MAX. (5 HOLES) FROM ENDS.
9. LD LADDER GATE ASSEMBLY TO BE INSTALLED SO TOP OF GATE IS LEVEL WITH TOP OF PLATFORM RAILING.
10. FIELD MODIFY EXISTING PLATFORM RAILING TO CLEARANCE OF 457mm MIN.- 475mm MAX. FROM BACK OF RAILING POST TO O/S LADDER SIDE RAIL.

McELHANNEY NOTES

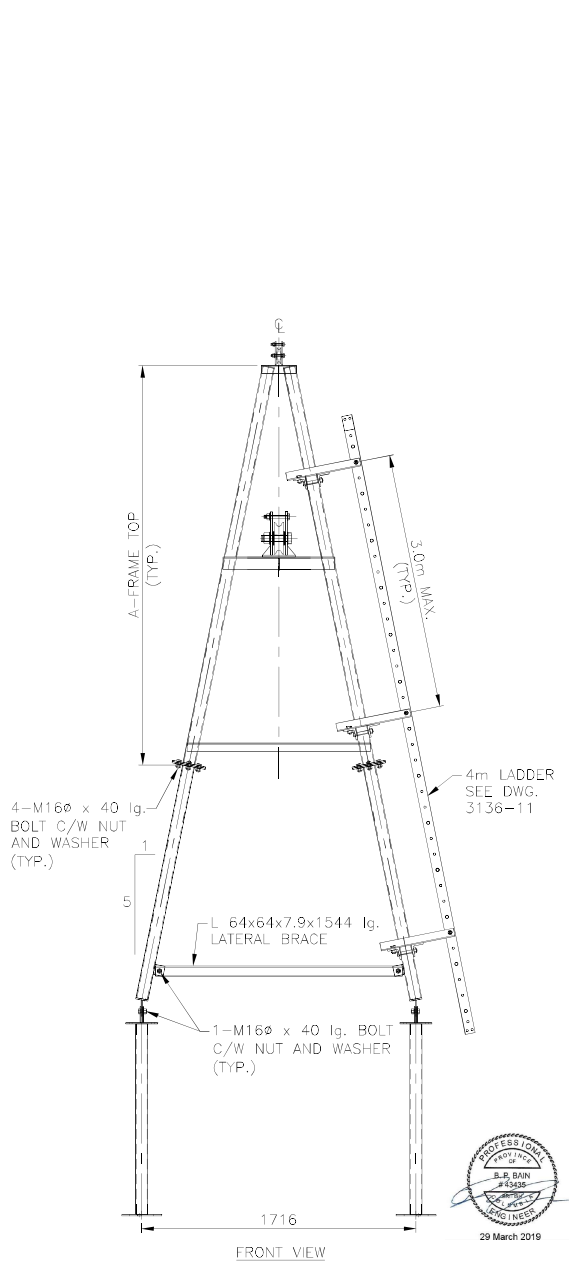
1. ORIGINAL DESIGN BY ENVIRONMENT CANADA.
2. McELHANNEY CHECKED AND APPROVED A-FRAME STRUCTURE ONLY, INCLUDING THE PLATFORM AND BRACING. ALL OTHER COMPONENTS SUCH AS SHEAVES, LADDER BRACKETS, CAR HOOKS, AND FOOTING PLATES ETC. WERE NOT REVIEWED. FOR DETAILS REFER TO LETTER REPORT DATED APRIL 27, 2000.
3. MAXIMUM SNOW DEPTH ON PLATFORMS NOT TO EXCEED 30cm PRIOR TO PERFORMING HYDROMETRIC MEASUREMENTS.
4. DESIGN LOAD = 2250 LBS. CONSISTING OF:
 - CABLE CAR - 200 LBS
 - METER REEL - 50 LBS
 - 2 PEOPLE - 400 LBS
 - B.S. OF METER CABLE - 1600 LBS
5. 25.4mmØ MAIN CABLE S.F. 3.8
6. ENVIRONMENT CANADA MATERIAL LIST NOT VERIFIED.
7. FOUNDATIONS NOT VERIFIED.
8. SINGLE BOLT CONNECTIONS NOT APPROVED.
9. LADDERS ARE DESIGNED TO MEET ANSI4.3-2008 REQUIREMENTS.
10. LADDER TO BE OCCUPIED BY MAX. 1 PERSONS AT ANY GIVEN TIME.



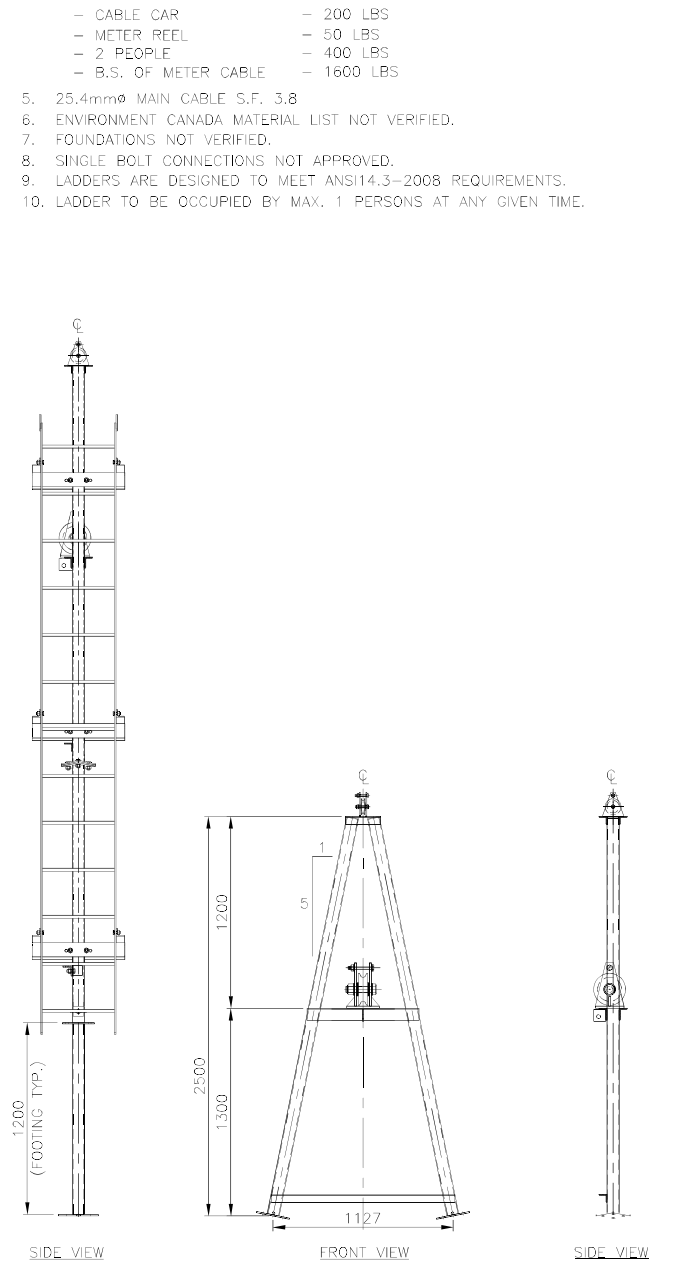
5.0 m LIGHT A-FRAME
1:25



4.0 m LIGHT A-FRAME
1:25



3.0 m LIGHT A-FRAME
1:25



1.5 m LIGHT A-FRAME TOP
1:25

Filename: S:\Project Files\2531-366 Environment Canada\02-00 A-Frame Ladders\7.0 Drawings\7.1 Working Dwg\Drawings\01745 LD A-Frames.dwg

2	MAR/19	ADDED PLATFORM RAILING CLEARANCE NOTE	WC	BB	
1	MAR/19	ISSUED FOR CONSTRUCTION	WC	BB	
No.	Date	Revision	Dr.	Ch.	

THIS DRAWING AND DESIGN IS THE PROPERTY OF McELHANNEY CONSULTING SERVICES LTD. AND SHALL NOT BE USED, REPRODUCED OR REPRODUCED WITHOUT THE CONSENT OF THE SAID COMPANY. McELHANNEY CONSULTING SERVICES LTD. WILL NOT BE HELD RESPONSIBLE FOR THE IMPROPER OR UNAUTHORIZED USE OF THIS DRAWING AND DESIGN.



McElhanney
McElhanney Consulting Services Ltd.
203-502 Bow Valley Trail
Canmore, AB T1W 1N9
PH 403-609-3992

Designed: KEL	Checked:	Date: MARCH 2010
Drawn: LLP	Surveyed:	
SCALE : AS SHOWN		



ENVIRONMENT CANADA
WATER SURVEY OF CANADA

LIGHT DUTY A-FRAME
1.5, 3.0, 4.0, 5.0m A-FRAMES

Client Project No

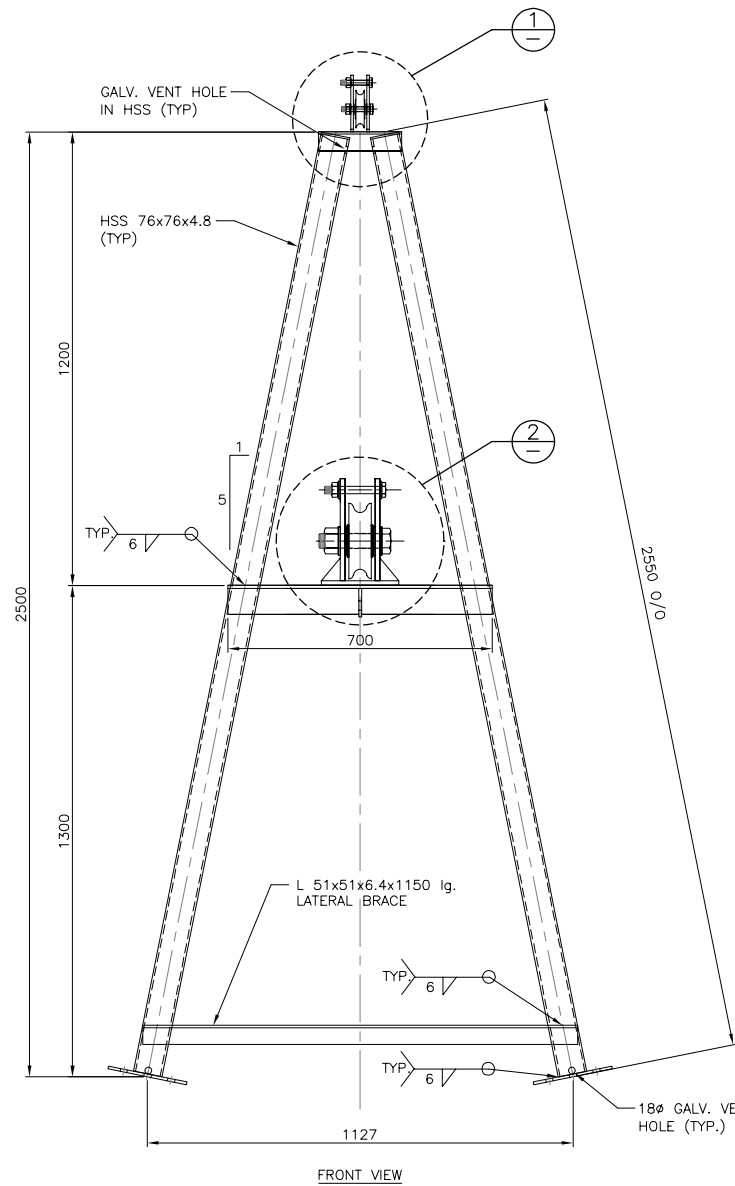
MCSL Project No. 2111-01745-5

Drawing No. **3182-1**

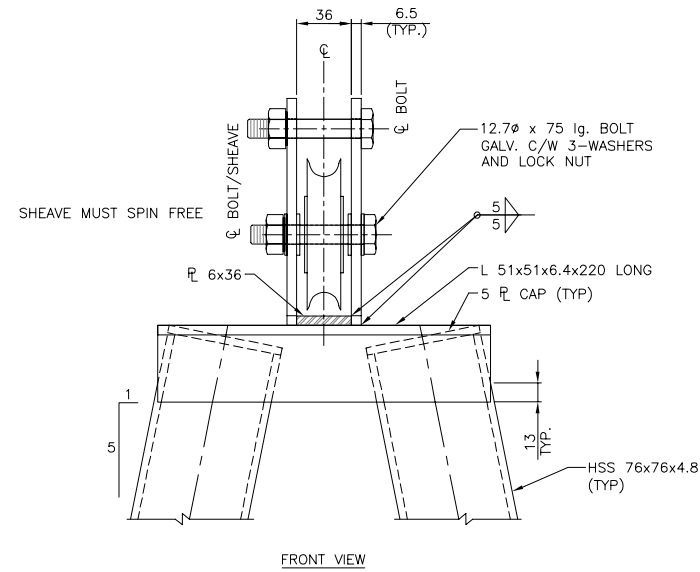
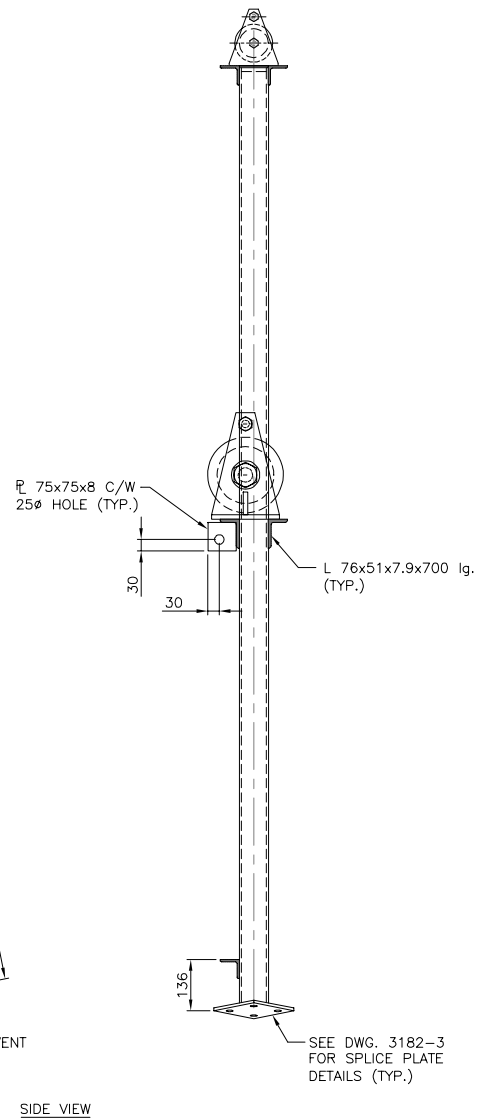
Revision 2

Destroy all prints bearing previous number

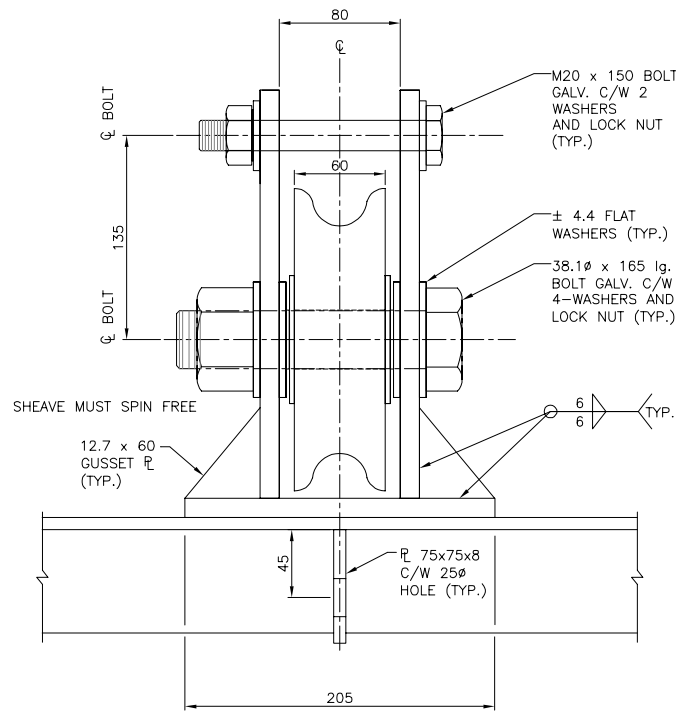
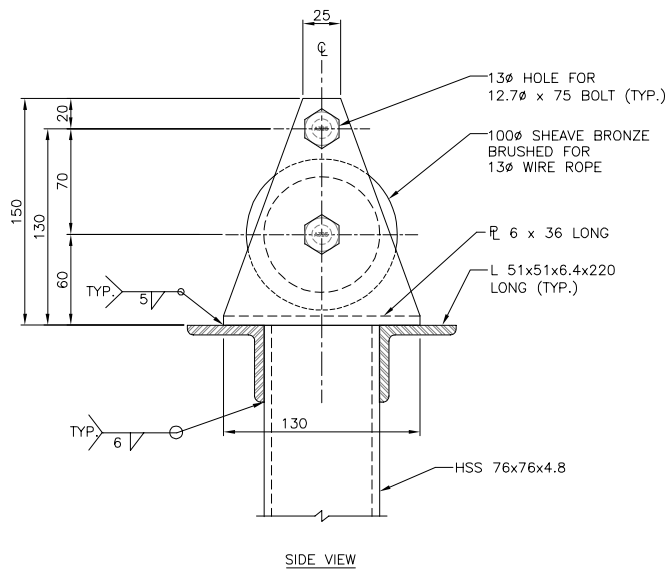
Plotted: March 24, 2010, 16:28:55
Filename: M:\Proj\2111-01745-5 - Environment Canada A-Frames\1048-02 01745-5 LD A-frame\01745-5 LD A-frame.dwg



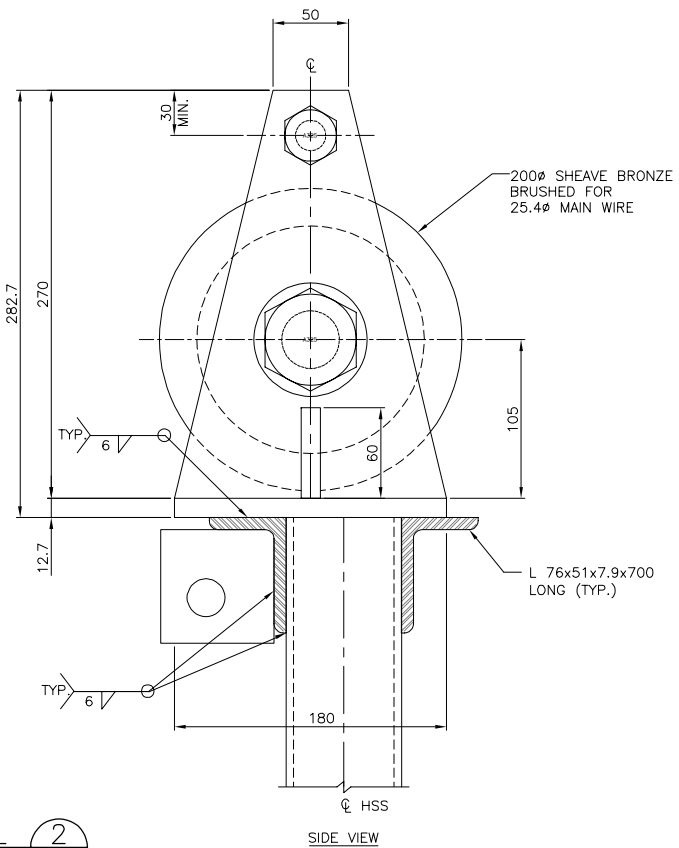
1.5 m LIGHT A-FRAME TOP
1:10



DETAIL 1
1:2.5



DETAIL 2
1:2.5



THIS DRAWING AND DESIGN IS THE PROPERTY OF McELHANNEY CONSULTING SERVICES LTD. AND SHALL NOT BE USED, REUSED OR REPRODUCED WITHOUT THE CONSENT OF THE SAID COMPANY. McELHANNEY CONSULTING SERVICES LTD. WILL NOT BE HELD RESPONSIBLE FOR THE IMPROPER OR UNAUTHORIZED USE OF THIS DRAWING AND DESIGN.



McElhanney

McElhanney Consulting Services Ltd.

13160-88 Avenue
Surrey, B.C. V3M 3K3

PH (604) 596-0391
FAX (604) 596-8853

Designed: KEL
Drawn: LLP

Checked:
Surveyed:

Date: MARCH 2010

Approved Sealed

ENVIRONMENT CANADA
WATER SURVEY OF CANADA

**LIGHT DUTY A-FRAME TOP
DETAILS**

Client Project No.

MCSL Project No. 2111-01745-5

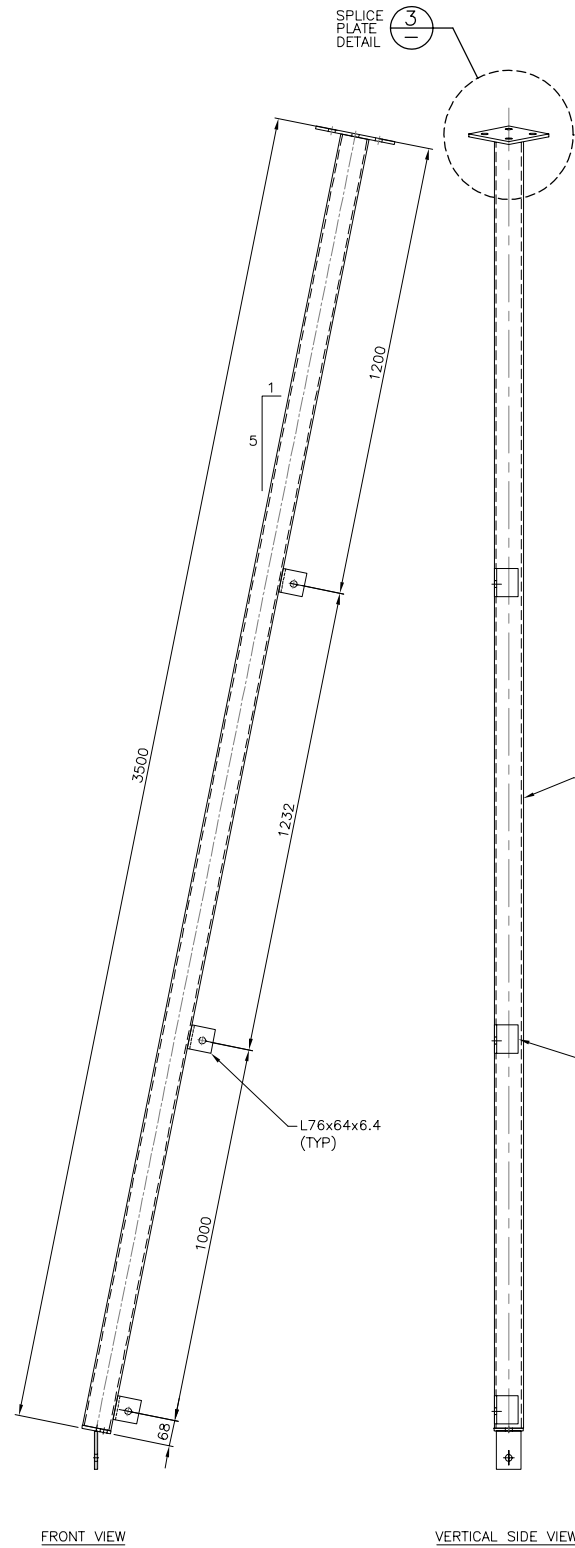
Drawing No.

3182-2

Revision

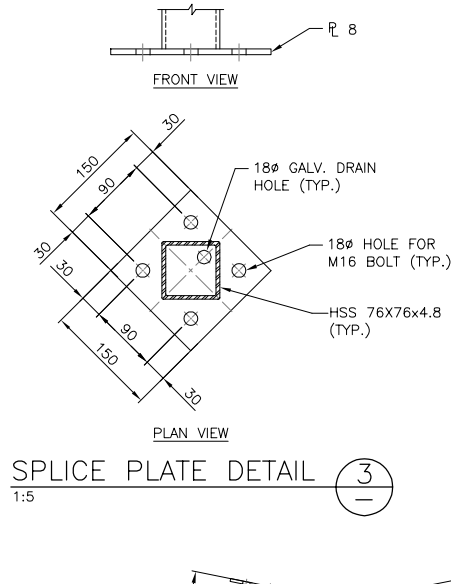
Destroy all prints bearing previous number

Filename: M:\Proj\2111-01745-5 - Environment Canada\ArFrames\1065-02 01745-5 LD ArFrame\01745-5 LD ArFrame.dwg
Plotted: March 24, 2010 - 10:28:50

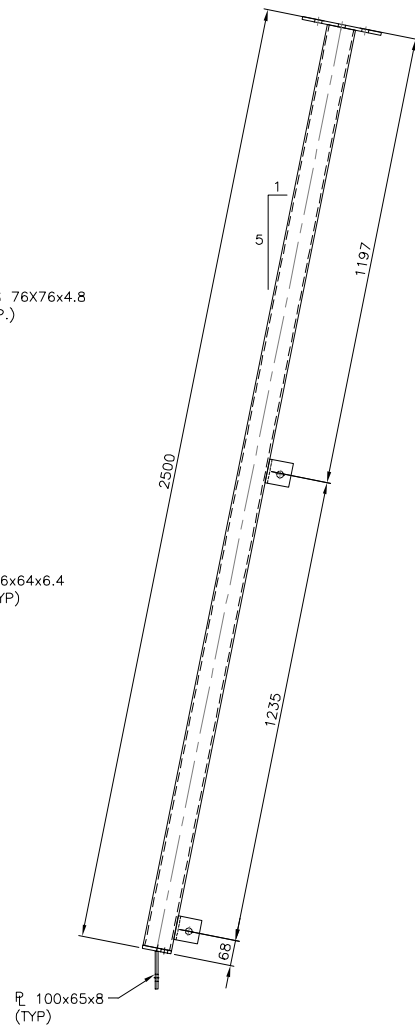


FRONT VIEW VERTICAL SIDE VIEW

3.5 m LEG ASSEMBLY
1:10

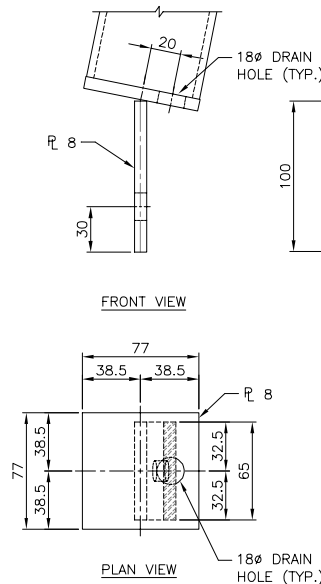


SPLICE PLATE DETAIL (3)
1:5

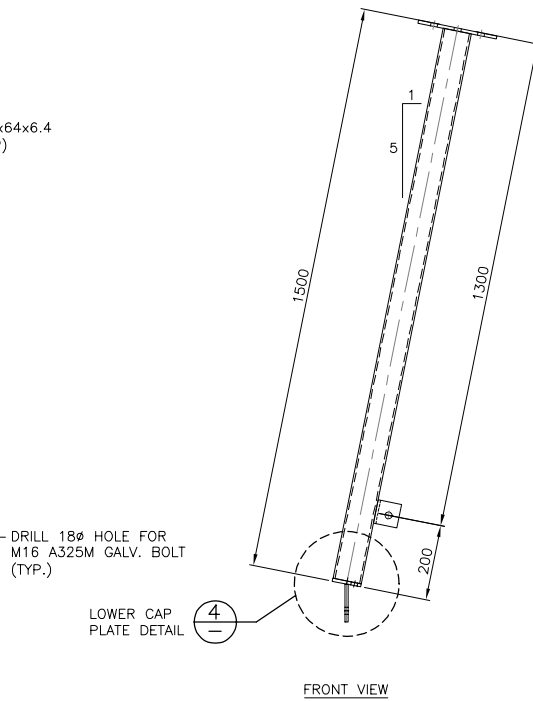


FRONT VIEW VERTICAL SIDE VIEW

2.5 m LEG ASSEMBLY
1:10

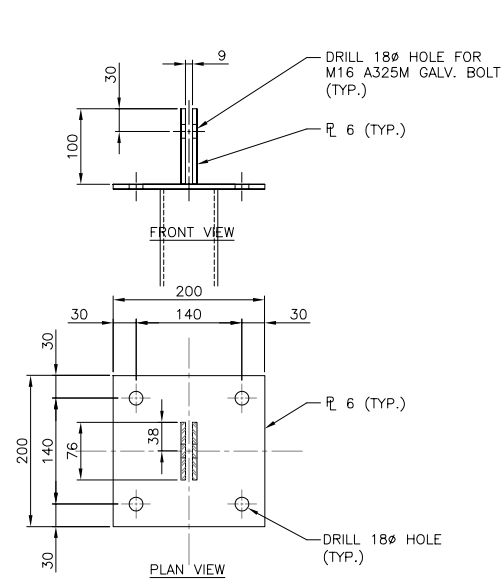


LOWER CAP PLATE DETAIL (4)
1:2.5

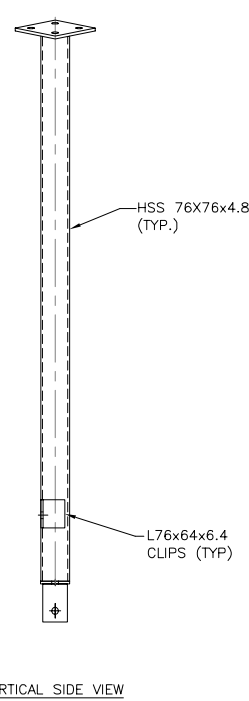


FRONT VIEW VERTICAL SIDE VIEW

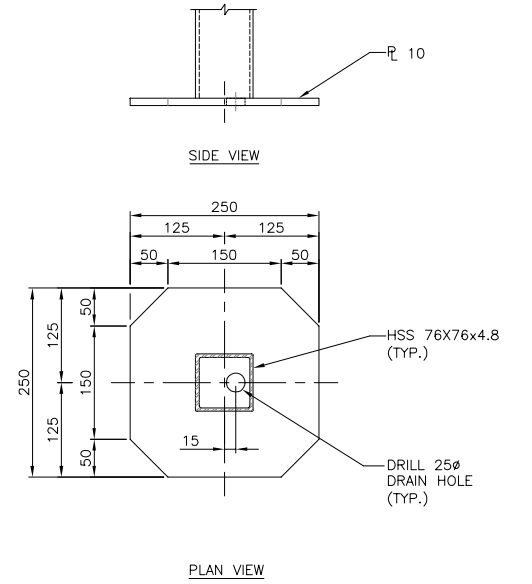
1.5 m LEG ASSEMBLY
1:10



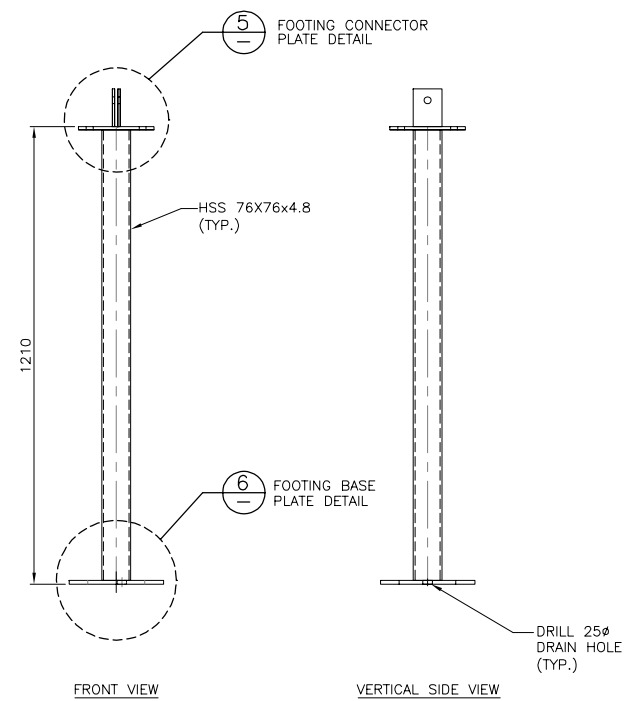
FOOTING CONNECTOR PLATE DETAIL (5)
1:5



FRONT VIEW VERTICAL SIDE VIEW



FOOTING BASE PLATE DETAIL (6)
1:5



FRONT VIEW VERTICAL SIDE VIEW

FOOTING
1:10

THIS DRAWING AND DESIGN IS THE PROPERTY OF McELHANNEY CONSULTING SERVICES LTD. AND SHALL NOT BE USED, REUSED OR REPRODUCED WITHOUT THE CONSENT OF THE SAID COMPANY. McELHANNEY CONSULTING SERVICES LTD. WILL NOT BE HELD RESPONSIBLE FOR THE IMPROPER OR UNAUTHORIZED USE OF THIS DRAWING AND DESIGN.



McElhanney
McElhanney Consulting Services Ltd.
13160-88 Avenue PH (604) 596-0391
Surrey, B.C. V3M 3K3 FAX (604) 596-8853

Designed: KEL
Drawn: LLP
Checked: Surveyed:
Date: MARCH 2010

Approved Sealed

ENVIRONMENT CANADA
WATER SURVEY OF CANADA

**LIGHT DUTY A-FRAME
LEG ASSEMBLY**

Client Project No.

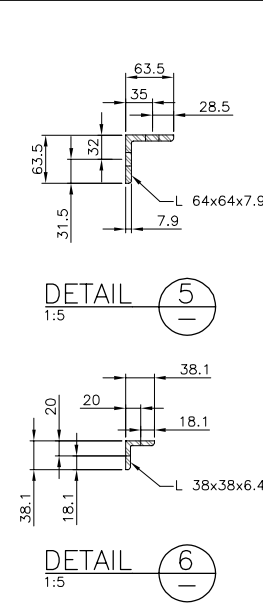
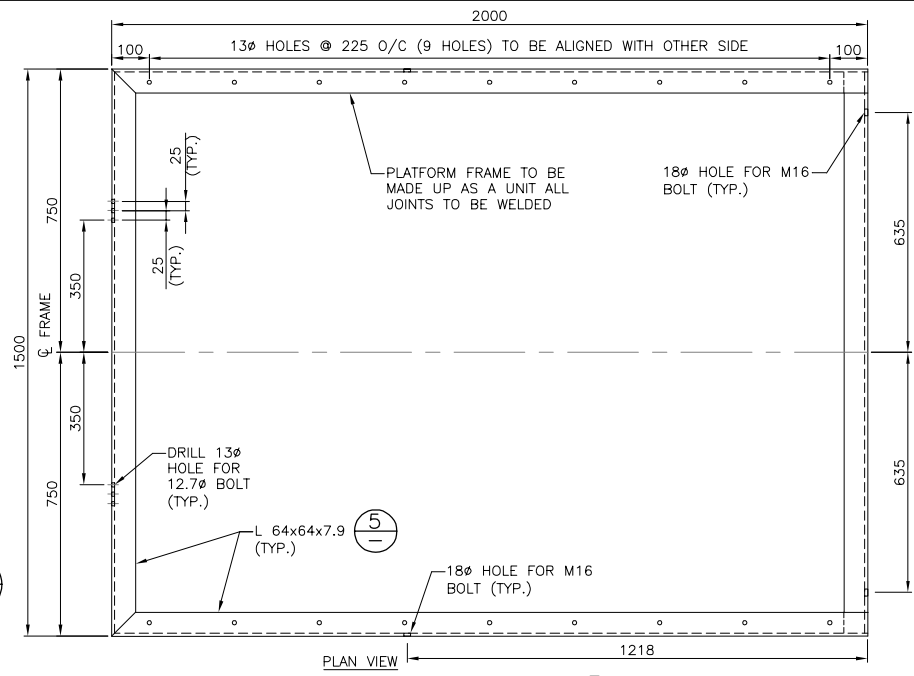
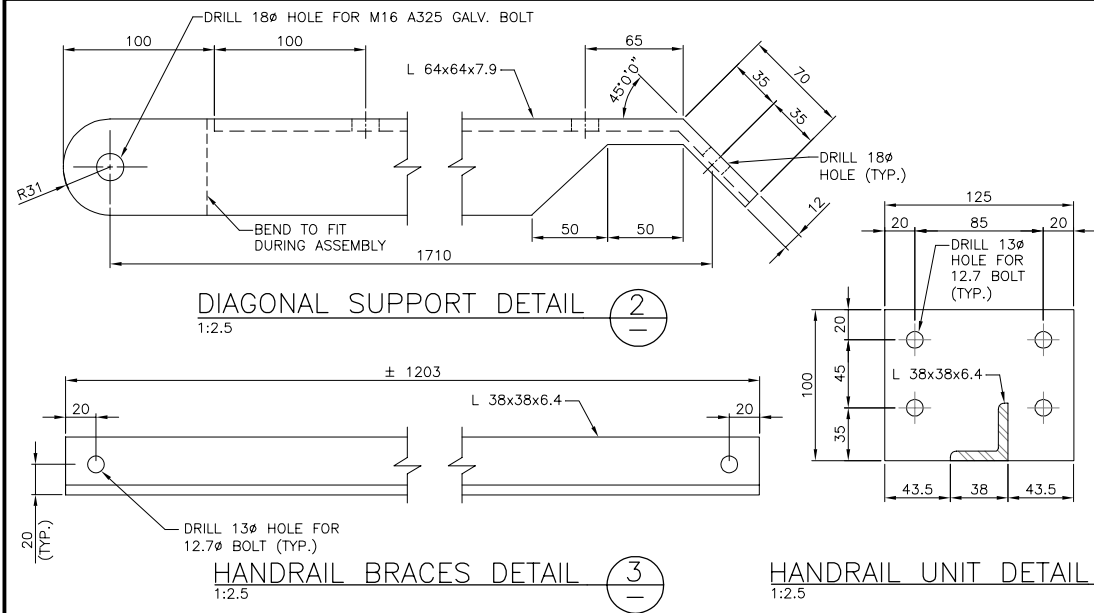
MCSL Project No. 2111-01745-5

Drawing No.

3182-3

Revision

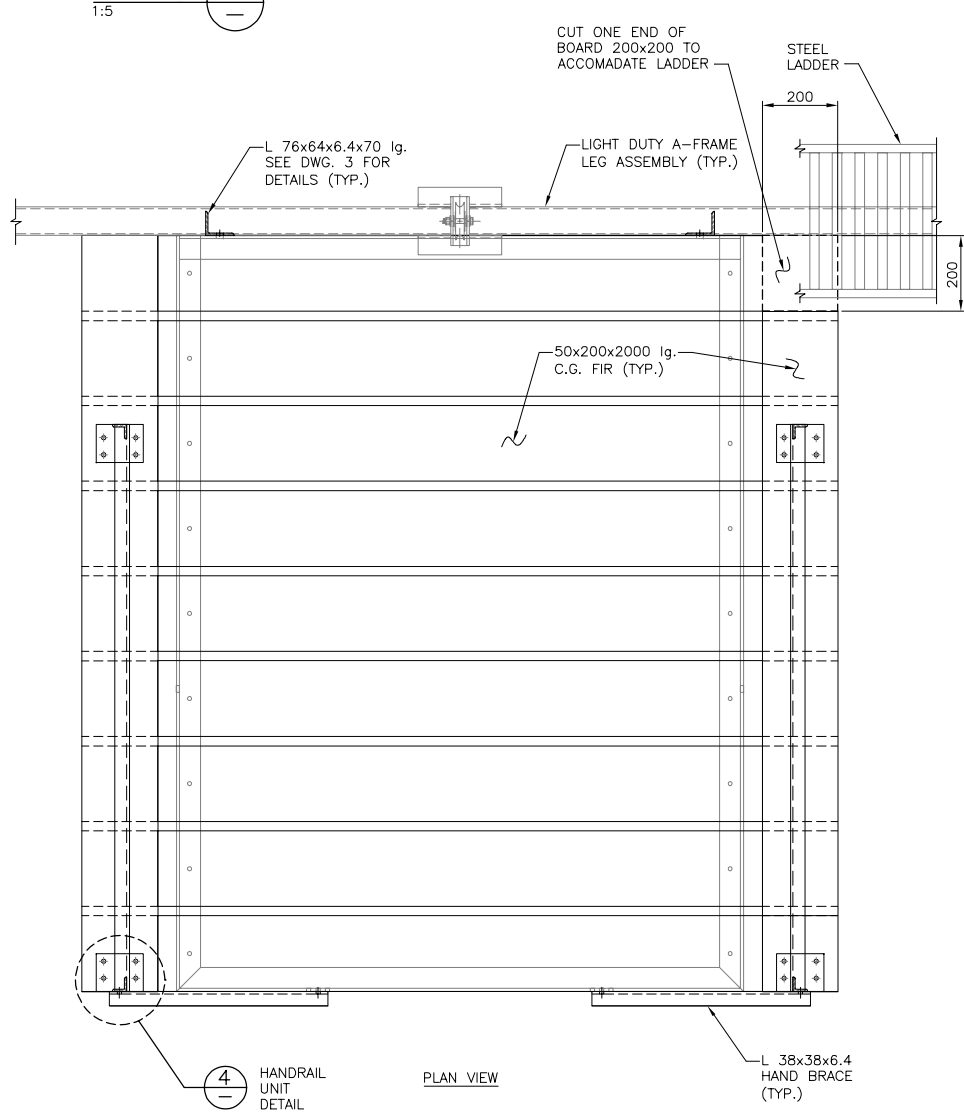
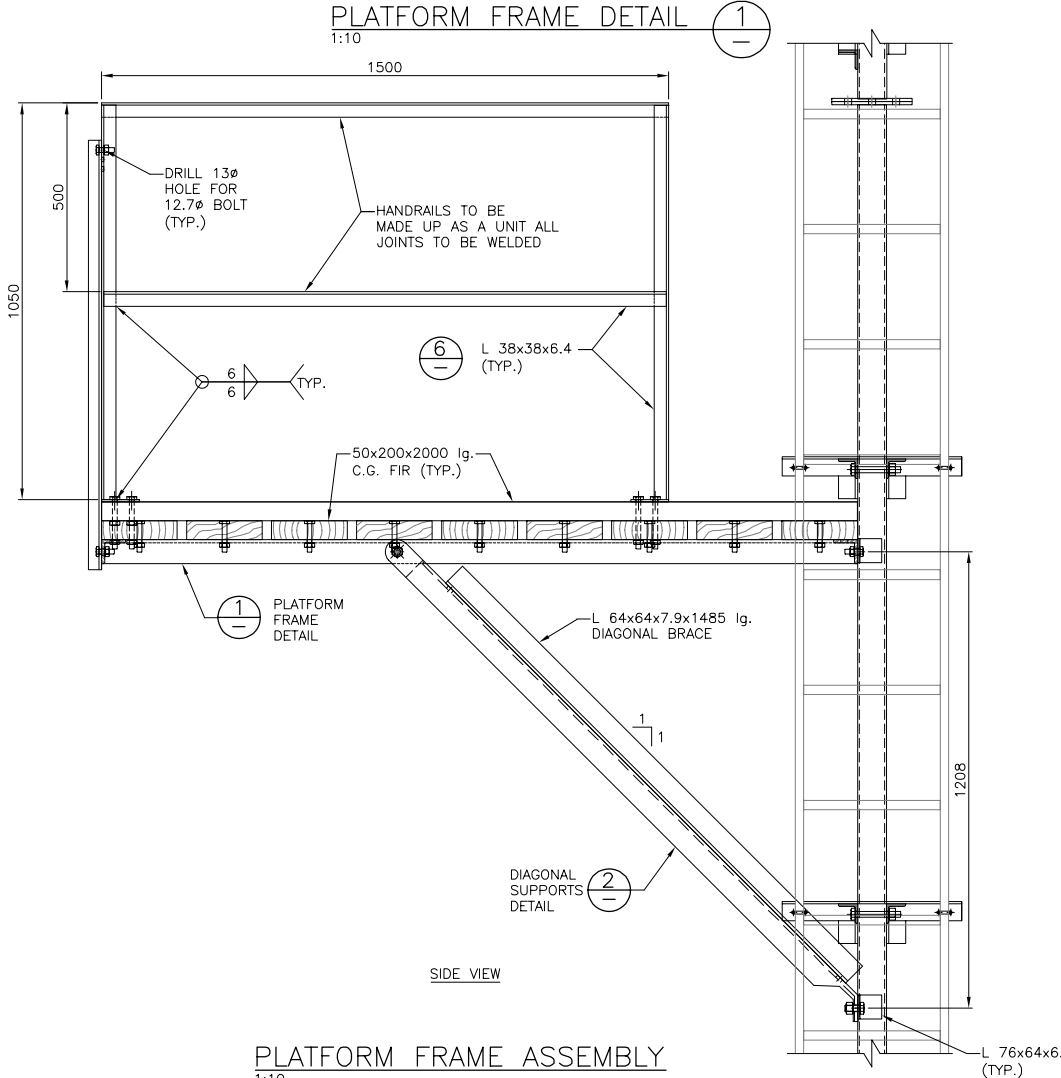
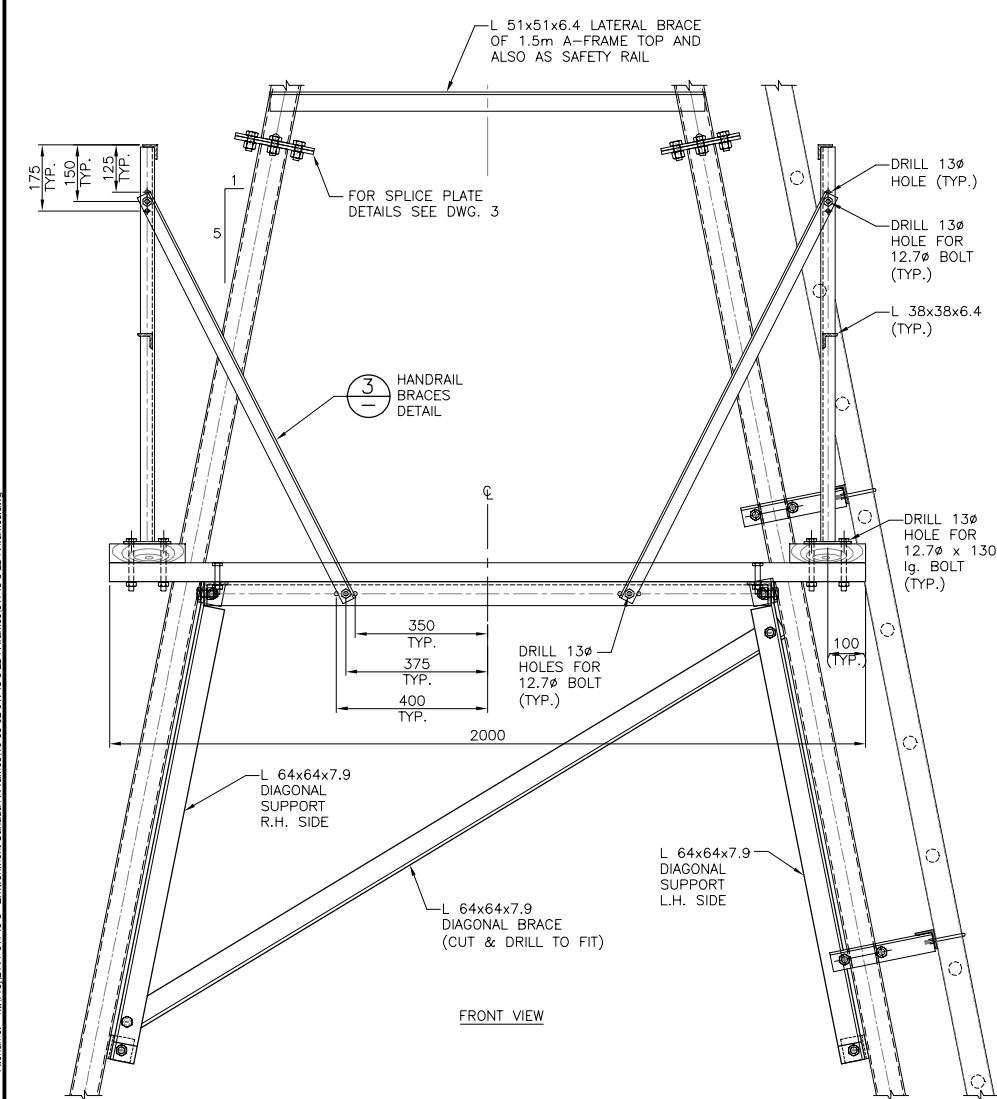
Destroy all prints bearing previous number



BILL OF MATERIAL FOR ONE PLATFORM

A COMPLETE PLATFORM ASSEMBLY CONSISTS OF THE FOLLOWING:			
QTY.	DESCRIPTION	DWG.	SUPPLIER
1	PLATFORM FRAME	3182-4	FABRICATOR
2	HANDRAIL UNITS	3182-4	FABRICATOR
2	HANDRAIL BRACES	3182-4	FABRICATOR
1	DIAGONAL SUPPORT L.H. SIDE	3182-4	FABRICATOR
1	DIAGONAL SUPPORT R.H. SIDE	3182-4	FABRICATOR
1	LATERAL BRACE / SAFETY RAIL	3182-4	FABRICATOR
10	BOLTS 12.7Ø x 40 lg. C/W NUT AND WASHER	3182-4	FABRICATOR
20	BOLTS 12.7Ø x 120 lg. C/W NUT AND WASHER	3182-4	FABRICATOR
16	BOLTS 12.7Ø x 130 lg. C/W NUT AND WASHER	3182-4	FABRICATOR
11	50x200 C.G. FIR x 2000 lg. PRESSURE TREATED AFTER CUTTING	3182-4	OTHER * W.S.C.

* WATER SURVEY OF CANADA



No. Date Revision Dr.		THIS DRAWING AND DESIGN IS THE PROPERTY OF McElhanney Consulting Services Ltd. AND SHALL NOT BE USED, REUSED OR REPRODUCED WITHOUT THE CONSENT OF THE SAID COMPANY. McELHANNEY CONSULTING SERVICES LTD. WILL NOT BE HELD RESPONSIBLE FOR THE IMPROPER OR UNAUTHORIZED USE OF THIS DRAWING AND DESIGN.		McElhanney McElhanney Consulting Services Ltd. 13160-88 Avenue PH (604) 596-0391 Surrey, B.C. V3M 3K3 FAX (604) 596-8853		Designed: KEL Checked: Date: MARCH 2010 Drawn: LLP Surveyed:		ENVIRONMENT CANADA WATER SURVEY OF CANADA LIGHT DUTY A-FRAME PLATFORM ASSEMBLY FOR LIGHT DUTY A-FRAME		Client Project No. MCSL Project No. 2111-01745-5 Drawing No. 3182-4 Revision	
--------------------------------------	--	---	--	--	--	--	--	--	--	--	--



MOVED LADDER DETAILS TO 3136-11



Client Project No.
MCSL Project No. 2111-01745-5
Drawing No.
3182-5
Revision 1

THIS DRAWING AND DESIGN IS THE PROPERTY OF McELHANNEY CONSULTING SERVICES LTD. AND SHALL NOT BE USED, REUSED OR REPRODUCED WITHOUT THE CONSENT OF THE SAID COMPANY. McELHANNEY CONSULTING SERVICES LTD. WILL NOT BE HELD RESPONSIBLE FOR THE IMPROPER OR UNAUTHORIZED USE OF THIS DRAWING AND DESIGN.



McElhanney

McElhanney Consulting Services Ltd.

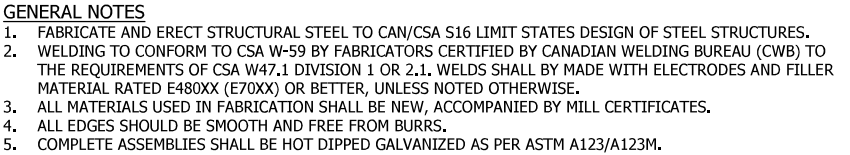
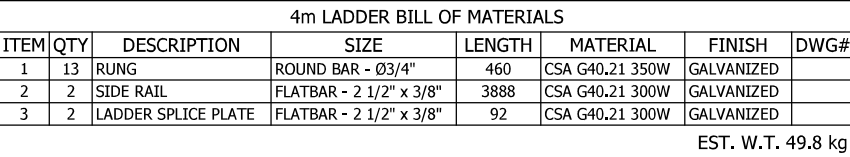
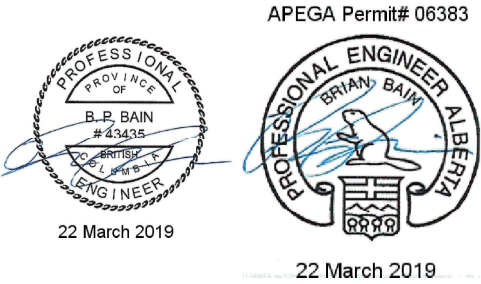
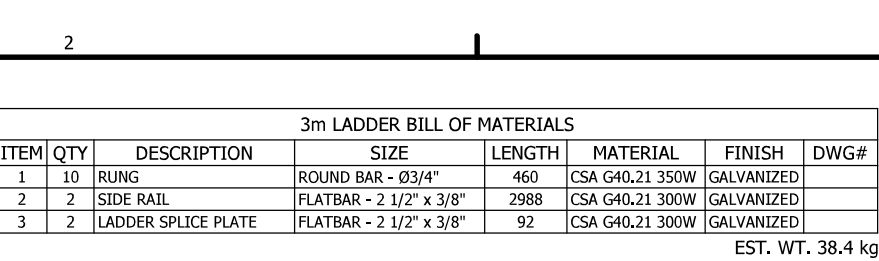
203-502 Bow Valley Trail
Canmore, AB T1W 1N9

PH 403-609-3992

Designed: KEL	Checked:	Date: MARCH 2010
Drawn: LLP	Surveyed:	

22 March 2019
Approved Seal

Client Project No.
MCSL Project No. 2111-01745-5
Drawing No.
3182-5
Revision 1



TOLERANCES & SURFACE FINISH - UNLESS OTHERWISE NOTED		
FABRICATION	MACHINING	SURFACE FINISH
0 TO 600 ± 1	X ± 0.5	Ra = 3,2
>600 ± 3	X,X ± 0.1	
	X,XX ± 0,01	

THIS DRAWING AND DESIGN IS THE PROPERTY OF McELHANNEY CONSULTING SERVICES LTD. (McELHANNEY) AND SHALL NOT BE USED, REUSED OR REPRODUCED WITHOUT THE CONSENT OF McELHANNEY.

McELHANNEY WILL NOT BE HELD RESPONSIBLE FOR THE IMPROPER OR UNAUTHORIZED USE OF THIS DRAWING AND DESIGN.

THIS DRAWING AND DESIGN HAS BEEN PREPARED FOR THE CLIENT IDENTIFIED, TO MEET THE STANDARDS AND REQUIREMENTS OF THE APPLICABLE PUBLIC AGENCIES AT THE TIME OF PREPARATION.

McELHANNAY, ITS EMPLOYEES, SUBCONSULTANTS AND AGENTS WILL NOT BE LIABLE FOR ANY LOSSES OR OTHER CONSEQUENCES RESULTING FROM THE USE OR RELIANCE UPON, OR ANY CHANGES MADE TO, THIS DRAWING, BY ANY THIRD PARTY, INCLUDING CONTRACTORS, SUPPLIERS, CONSULTANTS AND STAKEHOLDERS, OR THEIR EMPLOYEES OR AGENTS, WITHOUT McELHANNAY'S PRIOR WRITTEN CONSENT.



McElhanney Consulting Services Ltd.

#203, 502 Bow Valley Trail
CANMORE AB, T1W 1N9
www.mcelhanney.com
PH (403) 609-3992

ENVIRONMENT CANADA
WATER SURVEY OF CANADA

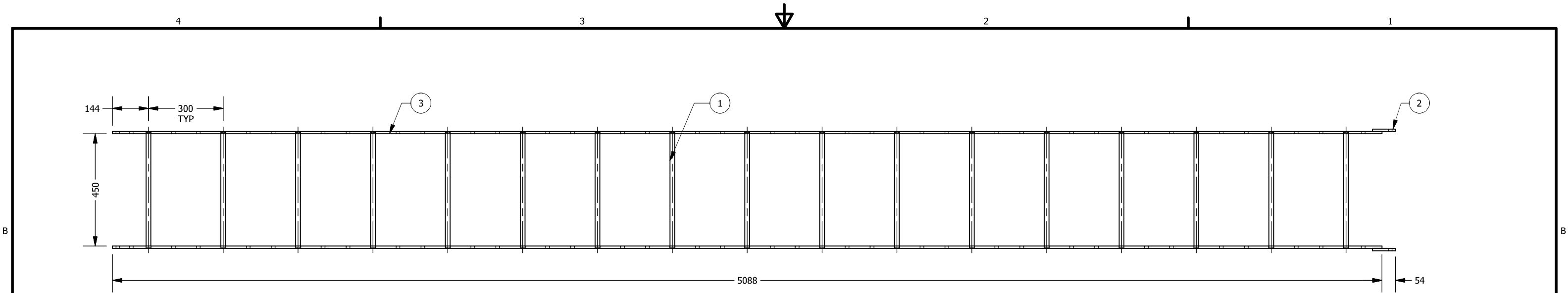
3m & 4m LADDER ASSEMBLIES

DRAWING #

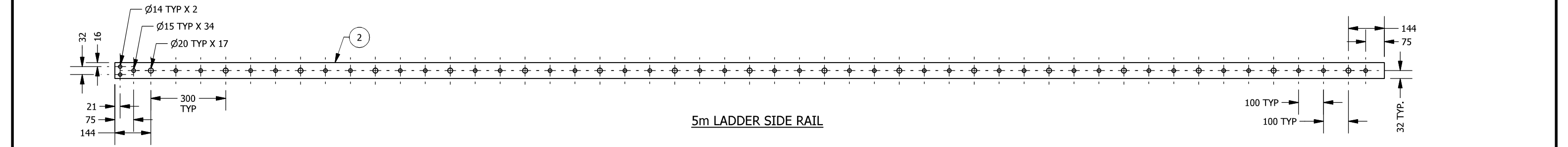
3136-11

PROJECT #
2531-36602

EV
0



5m LADDER

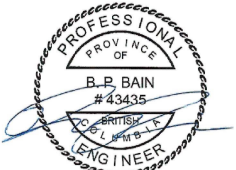


5m LADDER SIDE RAIL

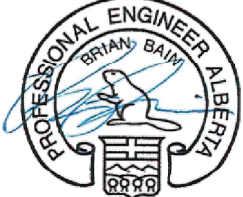
5m LADDER BILL OF MATERIALS							
ITEM	QTY	DESCRIPTION	SIZE	LENGTH	MATERIAL	FINISH	DWG#
1	17	RUNG	ROUND BAR - Ø3/4"	460	CSA G40.21 350W	GALVANIZED	
2	2	LADDER SPLICE PLATE	FLATBAR - 2 1/2" x 3/8"	92	CSA G40.21 300W	GALVANIZED	
3	2	SIDE RAIL	FLATBAR - 2 1/2" x 3/8"	5088	CSA G40.21 300W	GALVANIZED	

EST. W.T. 64.9 kg

APEGA Permit# 06383



22 March 2019



22 March 2019

- GENERAL NOTES
- FABRICATE AND ERECT STRUCTURAL STEEL TO CAN/CSA S16 LIMIT STATES DESIGN OF STEEL STRUCTURES.
 - WELDING TO CONFORM TO CSA W-59 BY FABRICATORS CERTIFIED BY CANADIAN WELDING BUREAU (CWB) TO THE REQUIREMENTS OF CSA W47.1 DIVISION 1 OR 2.1. WELDS SHALL BY MADE WITH ELECTRODES AND FILLER MATERIAL RATED E480XX (E70XX) OR BETTER, UNLESS NOTED OTHERWISE.
 - ALL MATERIALS USED IN FABRICATION SHALL BE NEW, ACCOMPANIED BY MILL CERTIFICATES.
 - ALL EDGES SHOULD BE SMOOTH AND FREE FROM BURRS.
 - COMPLETE ASSEMBLIES SHALL BE HOT DIPPED GALVANIZED AS PER ASTM A123/A123M.

0	03/07/19	ISSUED FOR CONSTRUCTION
REV	DATE	DESCRIPTION

TOLERANCES & SURFACE FINISH - UNLESS OTHERWISE NOTED

FABRICATION	MACHINING	SURFACE FINISH
0 TO 600 ±1	X ±0.5	Ra = 3.2
>600 ±3	X,X ±0.1	
	X,XX ±0.01	

ALL DIMENSIONS IN mm UNLESS OTHERWISE NOTED.
DO NOT SCALE DRAWING

THIS DRAWING AND DESIGN IS THE PROPERTY OF McELHANNEY CONSULTING SERVICES LTD. (McELHANNEY) AND SHALL NOT BE USED, REUSED OR REPRODUCED WITHOUT THE CONSENT OF McELHANNEY.

McELHANNEY WILL NOT BE HELD RESPONSIBLE FOR THE IMPROPER OR UNAUTHORIZED USE OF THIS DRAWING AND DESIGN.

THIS DRAWING AND DESIGN HAS BEEN PREPARED FOR THE CLIENT IDENTIFIED, TO MEET THE STANDARDS AND REQUIREMENTS OF THE APPLICABLE PUBLIC AGENCIES AT THE TIME OF PREPARATION.

McELHANNEY, ITS EMPLOYEES, SUBCONSULTANTS AND AGENTS WILL NOT BE LIABLE FOR ANY LOSSES OR OTHER CONSEQUENCES RESULTING FROM THE USE OR RELIANCE UPON, OR ANY CHANGES MADE TO, THIS DRAWING, BY ANY THIRD PARTY, INCLUDING CONTRACTORS, SUPPLIERS, CONSULTANTS AND STAKEHOLDERS, OR THEIR EMPLOYEES OR AGENTS, WITHOUT McELHANNEY'S PRIOR WRITTEN CONSENT.



McElhanney

McElhanney Consulting Services Ltd.

#203, 502 Bow Valley Trail
CANMORE AB, T1W 1N9
www.mcelhanney.com
PH (403) 609-3992

ENVIRONMENT CANADA
WATER SURVEY OF CANADA

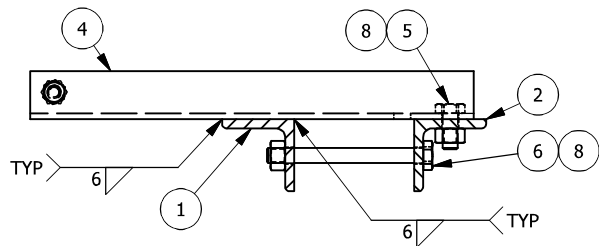
5m LADDER ASSEMBLY

DRAWING #

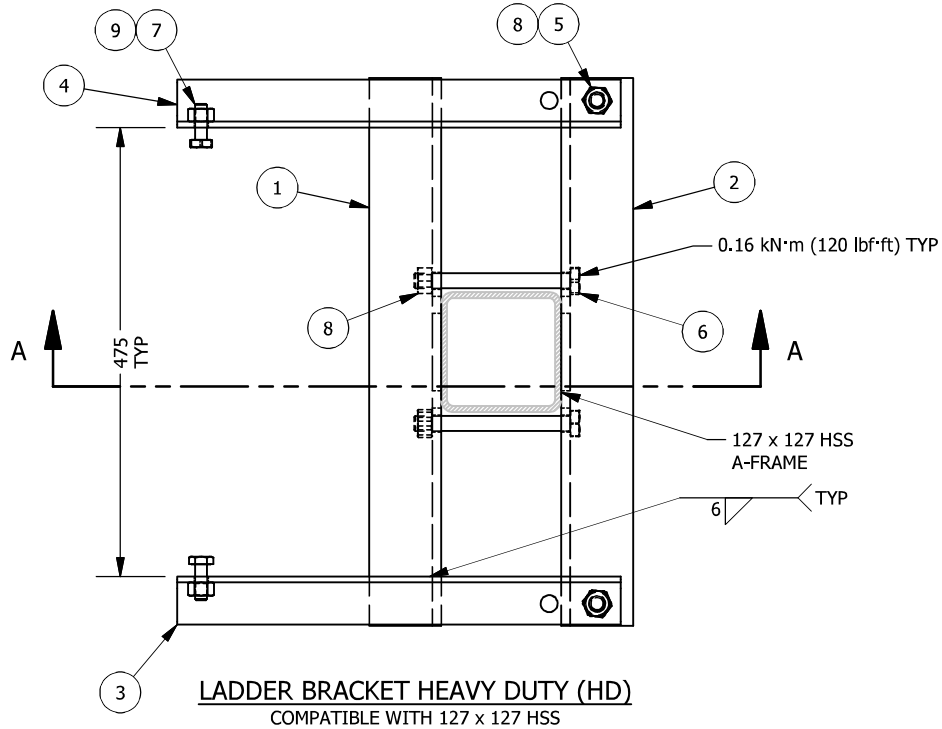
3136-12

PROJECT #
2531-36602

REV
0



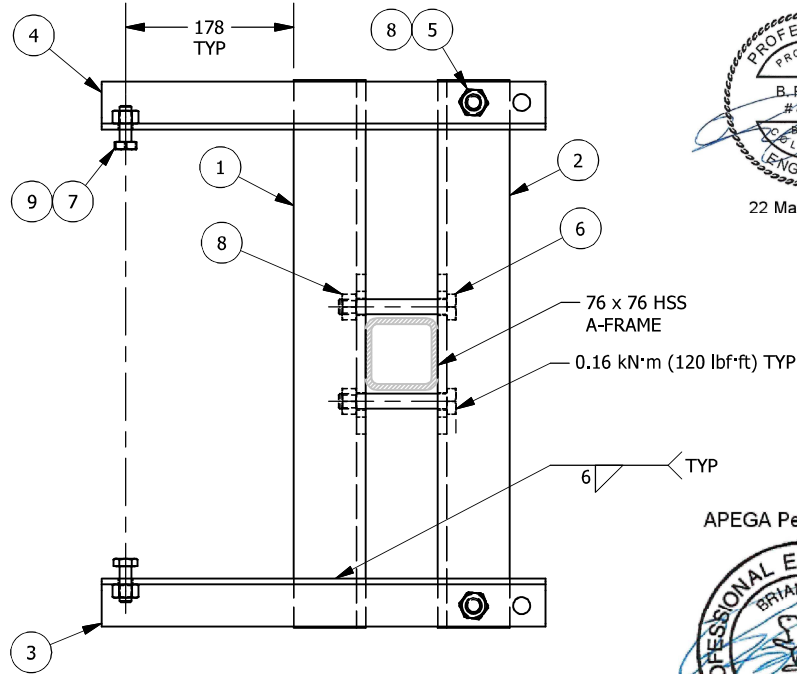
SECTION A-A
A-FRAME HSS OMITTED FOR CLARITY



HD LADDER BRACKET BILL OF MATERIALS							
ITEM	QTY	DESCRIPTION	SIZE	LENGTH	MATERIAL	FINISH	DWG#
1	1	A-FRAME WELDED	ANGLE - 3" x 3" x 3/8"	580	CSA G40.21 350W	GALVANIZED	
2	1	A-FRAME BOLTED	ANGLE - 3" x 3" x 3/8"	580	CSA G40.21 350W	GALVANIZED	
3	1	LADDER MOUNT ANGLE LEFT	ANGLE - 2" x 2" x 1/4"	470	CSA G40.21 350W	GALVANIZED	
4	1	LADDER MOUNT ANGLE RIGHT	ANGLE - 2" x 2" x 1/4"	470	CSA G40.21 350W	GALVANIZED	
5	2	HEX BOLT	5/8" - 11	1-1/2"	ASTM A325M	GALVANIZED	
6	2	HEX BOLT	5/8" - 11	6-1/2"	ASTM A325M	GALVANIZED	
7	2	HEX BOLT	1/2" - 13	1-1/2"	ASTM A325M	GALVANIZED	
8	4	HEX NUT	5/8" - 11		ASTM A325M	GALVANIZED	
9	2	HEX NUT	1/2" - 13		ASTM A325M	GALVANIZED	

EST. W.T. 18.0 kg

ASSEMBLY ALLOWS FOR ONE ASSEMBLY FOR THE TWO DIFFERENT SIZES OF HSS CONNECTION. ONLY DIFFERENCE IS THE LEGNTH OF THE CLAMPING BOLTS.

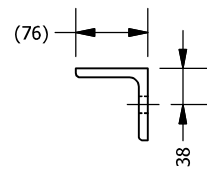


LD LADDER BRACKET BILL OF MATERIALS							
ITEM	QTY	DESCRIPTION	SIZE	LENGTH	MATERIAL	FINISH	DWG#
1	1	A-FRAME WELDED	ANGLE - 3" x 3" x 3/8"	580	CSA G40.21 350W	GALVANIZED	
2	1	A-FRAME BOLTED	ANGLE - 3" x 3" x 3/8"	580	CSA G40.21 350W	GALVANIZED	
3	1	LADDER MOUNT ANGLE LEFT	ANGLE - 2" x 2" x 1/4"	470	CSA G40.21 350W	GALVANIZED	
4	1	LADDER MOUNT ANGLE RIGHT	ANGLE - 2" x 2" x 1/4"	470	CSA G40.21 350W	GALVANIZED	
5	2	HEX BOLT	5/8" - 11	1-1/2"	ASTM A325M	GALVANIZED	
6	2	HEX BOLT	5/8" - 11	4-1/2"	ASTM A325M	GALVANIZED	
7	2	HEX BOLT	1/2" - 13	1-1/2"	ASTM A325M	GALVANIZED	
8	4	HEX NUT	5/8" - 11		ASTM A325M	GALVANIZED	
9	2	HEX NUT	1/2" - 13		ASTM A325M	GALVANIZED	

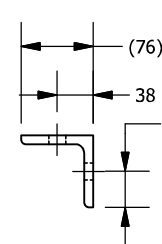
EST. W.T. 17.8 kg



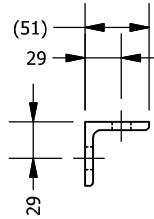
APEGA Permit# 06383



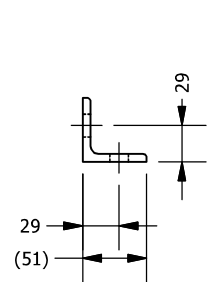
ITEM #1 DETAIL
A-FRAME CONNECTION WELDED



ITEM #2 DETAIL
A-FRAME CONNECTION BOLTED



ITEM #3 DETAIL
LADDER CONNECTION ANGLE



ITEM #4 DETAIL
LADDER CONNECTION ANGLE

GENERAL NOTES

- FABRICATE AND ERECT STRUCTURAL STEEL TO CAN/CSA S16 LIMIT STATES DESIGN OF STEEL STRUCTURES.
- WELDING TO CONFORM TO CSA W-59 BY FABRICATORS CERTIFIED BY CANADIAN WELDING BUREAU (CWB) TO THE REQUIREMENTS OF CSA W47.1 DIVISION 1 OR 2.1. WELDS SHALL BE MADE WITH ELECTRODES AND FILLER MATERIAL RATED E480XX (E70XX) OR BETTER, UNLESS NOTED OTHERWISE.
- ALL MATERIALS USED IN FABRICATION SHALL BE NEW, ACCOMPANIED BY MILL CERTIFICATES.
- ALL EDGES SHOULD BE SMOOTH AND FREE FROM BURRS.
- COMPLETE ASSEMBLIES SHALL BE HOT DIPPED GALVANIZED AS PER ASTM A123/A123M.

0	03/07/19	ISSUED FOR CONSTRUCTION
REV	DATE	DESCRIPTION

TOLERANCES & SURFACE FINISH - UNLESS OTHERWISE NOTED

FABRICATION	MACHINING	SURFACE FINISH
0 TO 600 ±1	X ±0.5	Ra = 3.2
>600 ±3	X,X ±0.1	
	X,XX ±0.01	

ALL DIMENSIONS IN mm UNLESS OTHERWISE NOTED.
DO NOT SCALE DRAWING

THIS DRAWING AND DESIGN IS THE PROPERTY OF McElhanney Consulting Services Ltd. (McElhanney) AND SHALL NOT BE USED, REUSED OR REPRODUCED WITHOUT THE CONSENT OF McElhanney.

McElhanney WILL NOT BE HELD RESPONSIBLE FOR THE IMPROPER OR UNAUTHORIZED USE OF THIS DRAWING AND DESIGN.

THIS DRAWING AND DESIGN HAS BEEN PREPARED FOR THE CLIENT IDENTIFIED, TO MEET THE STANDARDS AND REQUIREMENTS OF THE APPLICABLE PUBLIC AGENCIES AT THE TIME OF PREPARATION.

McElhanney, ITS EMPLOYEES, SUBCONSULTANTS AND AGENTS WILL NOT BE LIABLE FOR ANY LOSSES OR OTHER CONSEQUENCES RESULTING FROM THE USE OR RELIANCE UPON, OR ANY CHANGES MADE TO, THIS DRAWING, BY ANY THIRD PARTY, INCLUDING CONTRACTORS, SUPPLIERS, CONSULTANTS AND STAKEHOLDERS, OR THEIR EMPLOYEES OR AGENTS, WITHOUT McElhanney'S PRIOR WRITTEN CONSENT.



McElhanney

McElhanney Consulting Services Ltd.

#203, 502 Bow Valley Trail
CANMORE AB, T1W 1N9
www.mcelhanney.com
PH (403) 609-3992

ENVIRONMENT CANADA
WATER SURVEY OF CANADA

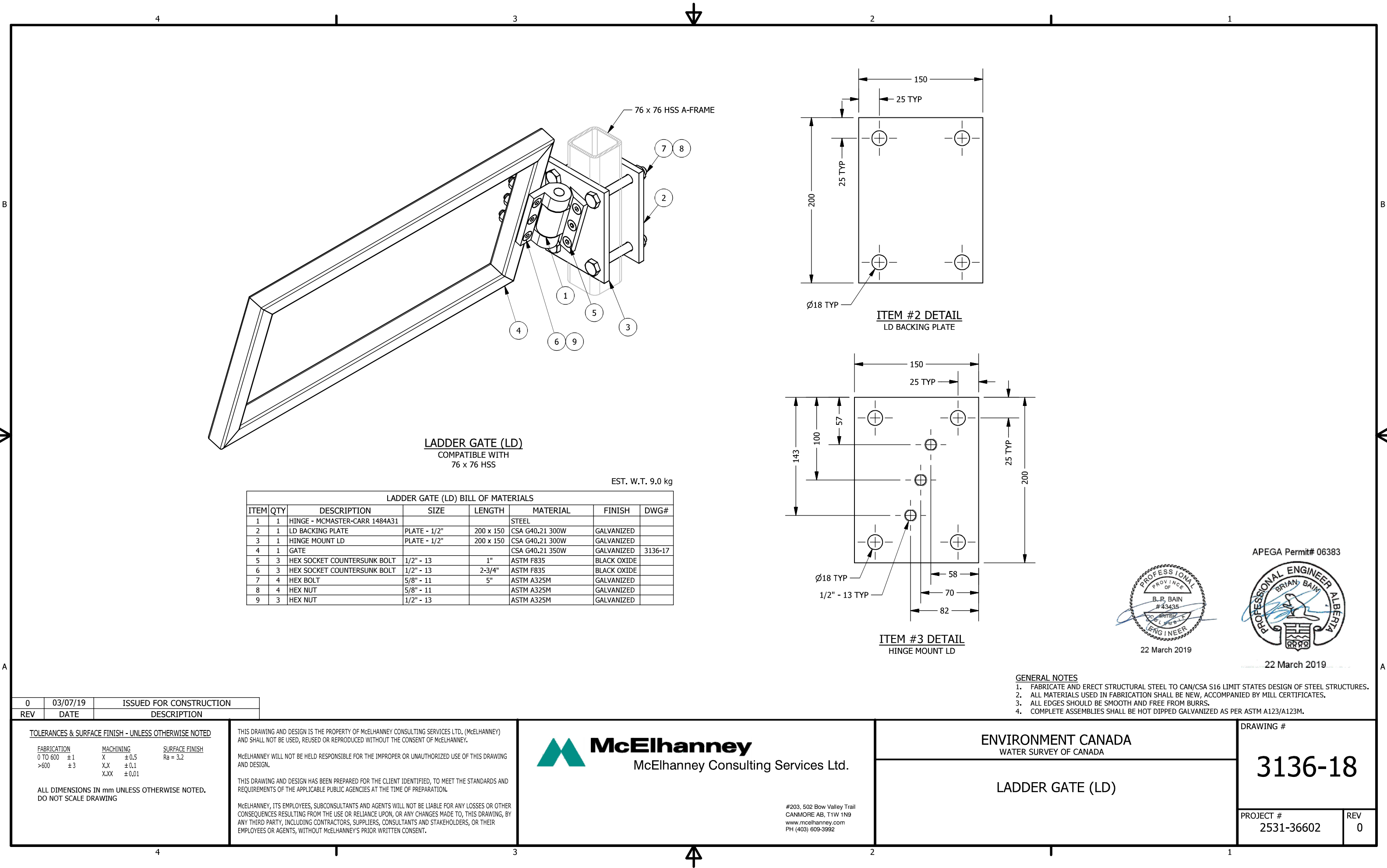
LADDER BRACKETS

DRAWING #

3136-13

PROJECT #
2531-36602

REV
0



LADDER GATE (LD) BILL OF MATERIALS							
ITEM	QTY	DESCRIPTION	SIZE	LENGTH	MATERIAL	FINISH	DWG#
1	1	HINGE - MCMASTER-CARR 1484A31			STEEL		
2	1	LD BACKING PLATE	PLATE - 1/2"	200 x 150	CSA G40.21 300W	GALVANIZED	
3	1	HINGE MOUNT LD	PLATE - 1/2"	200 x 150	CSA G40.21 300W	GALVANIZED	
4	1	GATE			CSA G40.21 350W	GALVANIZED	3136-17
5	3	HEX SOCKET COUNTERSUNK BOLT	1/2" - 13	1"	ASTM F835	BLACK OXIDE	
6	3	HEX SOCKET COUNTERSUNK BOLT	1/2" - 13	2-3/4"	ASTM F835	BLACK OXIDE	
7	4	HEX BOLT	5/8" - 11	5"	ASTM A325M	GALVANIZED	
8	4	HEX NUT	5/8" - 11		ASTM A325M	GALVANIZED	
9	3	HEX NUT	1/2" - 13		ASTM A325M	GALVANIZED	

EST. W.T. 9.0 kg

0	03/07/19	ISSUED FOR CONSTRUCTION
REV	DATE	DESCRIPTION

TOLERANCES & SURFACE FINISH - UNLESS OTHERWISE NOTED

FABRICATION	MACHINING	SURFACE FINISH
0 TO 600 ±1	X ±0.5	Ra = 3.2
>600 ±3	X,X ±0.1	
	X,XX ±0.01	

ALL DIMENSIONS IN mm UNLESS OTHERWISE NOTED.
DO NOT SCALE DRAWING

THIS DRAWING AND DESIGN IS THE PROPERTY OF McElhanney Consulting Services Ltd. (McElhanney) AND SHALL NOT BE USED, REUSED OR REPRODUCED WITHOUT THE CONSENT OF McElhanney.

McElhanney WILL NOT BE HELD RESPONSIBLE FOR THE IMPROPER OR UNAUTHORIZED USE OF THIS DRAWING AND DESIGN.

THIS DRAWING AND DESIGN HAS BEEN PREPARED FOR THE CLIENT IDENTIFIED, TO MEET THE STANDARDS AND REQUIREMENTS OF THE APPLICABLE PUBLIC AGENCIES AT THE TIME OF PREPARATION.

McElhanney, ITS EMPLOYEES, SUBCONSULTANTS AND AGENTS WILL NOT BE LIABLE FOR ANY LOSSES OR OTHER CONSEQUENCES RESULTING FROM THE USE OR RELIANCE UPON, OR ANY CHANGES MADE TO, THIS DRAWING, BY ANY THIRD PARTY, INCLUDING CONTRACTORS, SUPPLIERS, CONSULTANTS AND STAKEHOLDERS, OR THEIR EMPLOYEES OR AGENTS, WITHOUT McElhanney'S PRIOR WRITTEN CONSENT.



McElhanney

McElhanney Consulting Services Ltd.

#203, 502 Bow Valley Trail
CANMORE AB, T1W 1N9
www.mcelhanney.com
PH (403) 609-3992

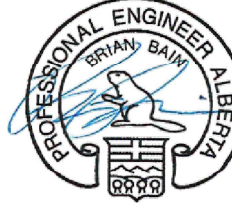
ENVIRONMENT CANADA
WATER SURVEY OF CANADA

LADDER GATE (LD)

APEGA Permit# 06383



22 March 2019



22 March 2019

GENERAL NOTES

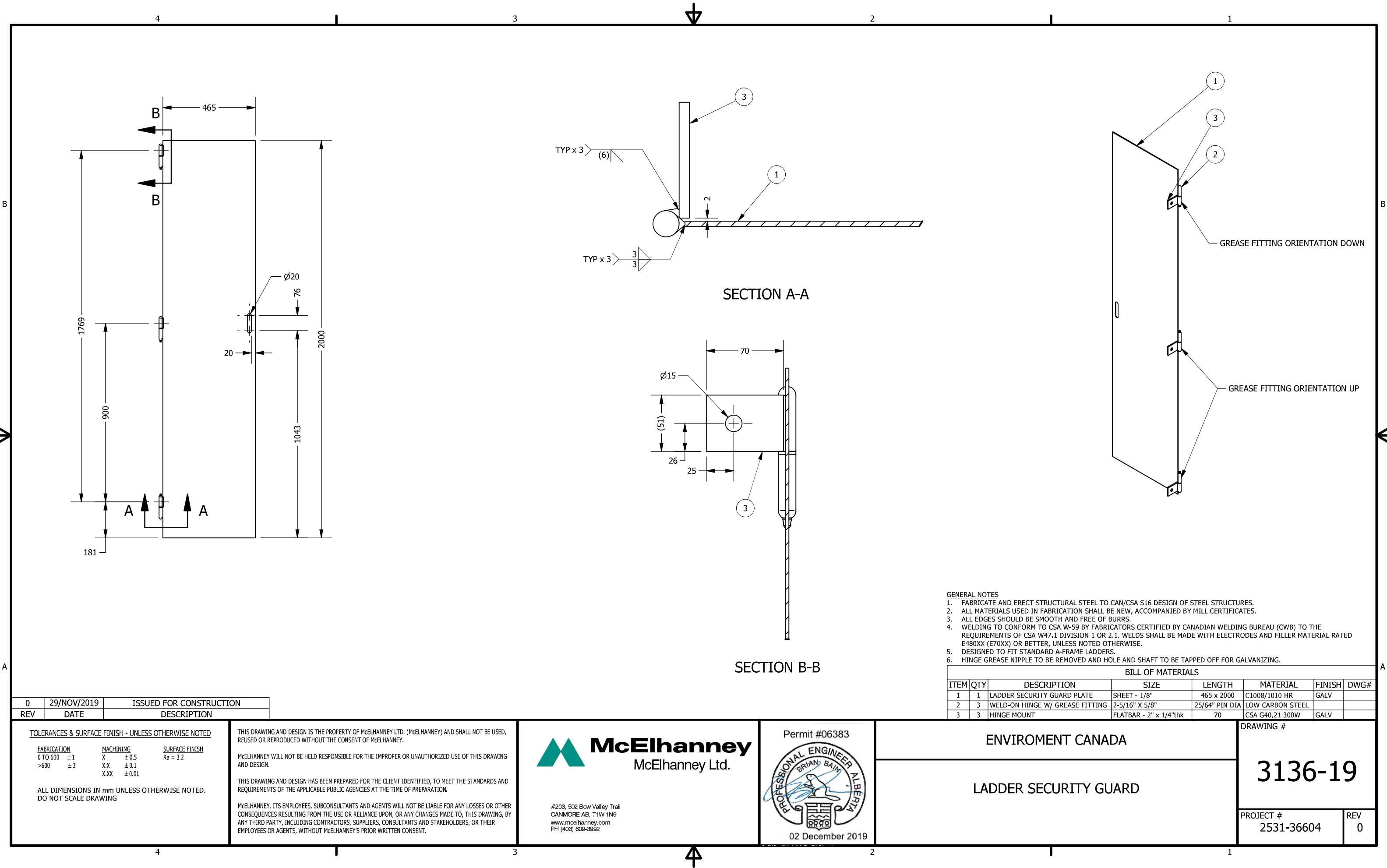
1. FABRICATE AND ERECT STRUCTURAL STEEL TO CAN/CSA S16 LIMIT STATES DESIGN OF STEEL STRUCTURES.
2. ALL MATERIALS USED IN FABRICATION SHALL BE NEW, ACCOMPANIED BY MILL CERTIFICATES.
3. ALL EDGES SHOULD BE SMOOTH AND FREE FROM BURRS.
4. COMPLETE ASSEMBLIES SHALL BE HOT DIPPED GALVANIZED AS PER ASTM A123/A123M.

DRAWING #

3136-18

PROJECT #
2531-36602

REV
0



- GENERAL NOTES
1. FABRICATE AND ERECT STRUCTURAL STEEL TO CAN/CSA S16 DESIGN OF STEEL STRUCTURES.
 2. ALL MATERIALS USED IN FABRICATION SHALL BE NEW, ACCOMPANIED BY MILL CERTIFICATES.
 3. ALL EDGES SHOULD BE SMOOTH AND FREE OF BURRS.
 4. WELDING TO CONFORM TO CSA W-59 BY FABRICATORS CERTIFIED BY CANADIAN WELDING BUREAU (CWB) TO THE REQUIREMENTS OF CSA W47.1 DIVISION 1 OR 2.1. WELDS SHALL BE MADE WITH ELECTRODES AND FILLER MATERIAL RATED E480XX (E70XX) OR BETTER, UNLESS NOTED OTHERWISE.
 5. DESIGNED TO FIT STANDARD A-FRAME LADDERS.
 6. HINGE GREASE NIPPLE TO BE REMOVED AND HOLE AND SHAFT TO BE TAPPED OFF FOR GALVANIZING.

BILL OF MATERIALS						
ITEM	QTY	DESCRIPTION	SIZE	LENGTH	MATERIAL	FINISH
1	1	LADDER SECURITY GUARD PLATE	SHEET - 1/8"	465 x 2000	C1008/1010 HR	GALV
2	3	WELD-ON HINGE W/ GREASE FITTING	2-5/16" X 5/8"	25/64" PIN DIA	LOW CARBON STEEL	
3	3	HINGE MOUNT	FLATBAR - 2" x 1/4"thk	70	CSA G40.21 300W	GALV

0	29/NOV/2019	ISSUED FOR CONSTRUCTION
REV	DATE	DESCRIPTION

TOLERANCES & SURFACE FINISH - UNLESS OTHERWISE NOTED

FABRICATION	MACHINING	SURFACE FINISH
0 TO 600 ±1	X ±0.5	Ra = 3.2
>600 ±3	X,X ±0.1	
	X,XX ±0.01	

ALL DIMENSIONS IN mm UNLESS OTHERWISE NOTED.
DO NOT SCALE DRAWING

THIS DRAWING AND DESIGN IS THE PROPERTY OF McElhanney LTD. (McELHANNEY) AND SHALL NOT BE USED, REUSED OR REPRODUCED WITHOUT THE CONSENT OF McELHANNEY.

McELHANNEY WILL NOT BE HELD RESPONSIBLE FOR THE IMPROPER OR UNAUTHORIZED USE OF THIS DRAWING AND DESIGN.

THIS DRAWING AND DESIGN HAS BEEN PREPARED FOR THE CLIENT IDENTIFIED, TO MEET THE STANDARDS AND REQUIREMENTS OF THE APPLICABLE PUBLIC AGENCIES AT THE TIME OF PREPARATION.

McELHANNEY, ITS EMPLOYEES, SUBCONSULTANTS AND AGENTS WILL NOT BE LIABLE FOR ANY LOSSES OR OTHER CONSEQUENCES RESULTING FROM THE USE OR RELIANCE UPON, OR ANY CHANGES MADE TO, THIS DRAWING, BY ANY THIRD PARTY, INCLUDING CONTRACTORS, SUPPLIERS, CONSULTANTS AND STAKEHOLDERS, OR THEIR EMPLOYEES OR AGENTS, WITHOUT McELHANNEY'S PRIOR WRITTEN CONSENT.



#203, 502 Bow Valley Trail
CANMORE AB, T1W 1N9
www.mcelhanney.com
PH (403) 609-3992



ENVIROMENT CANADA

LADDER SECURITY GUARD

DRAWING #

3136-19

PROJECT #
2531-36604

REV
0