



**Public Services and  
Procurement Canada**

**Services publics et  
Approvisionnement Canada**

**KM 445 - FORT NELSON  
SALT SHED REPLACEMENT  
ALASKA HIGHWAY, BC**

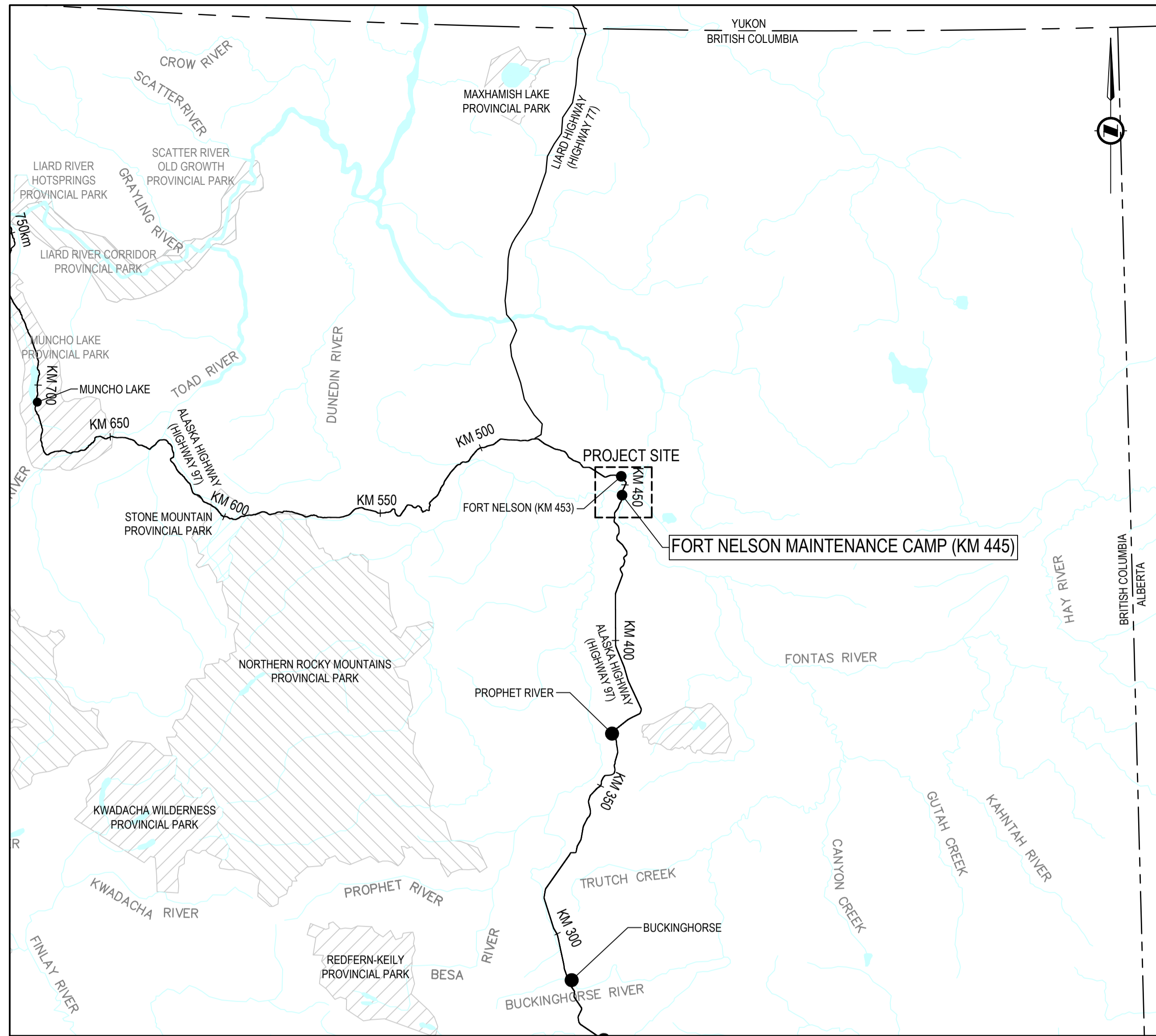
**ALASKA HIGHWAY  
BRITISH COLUMBIA**



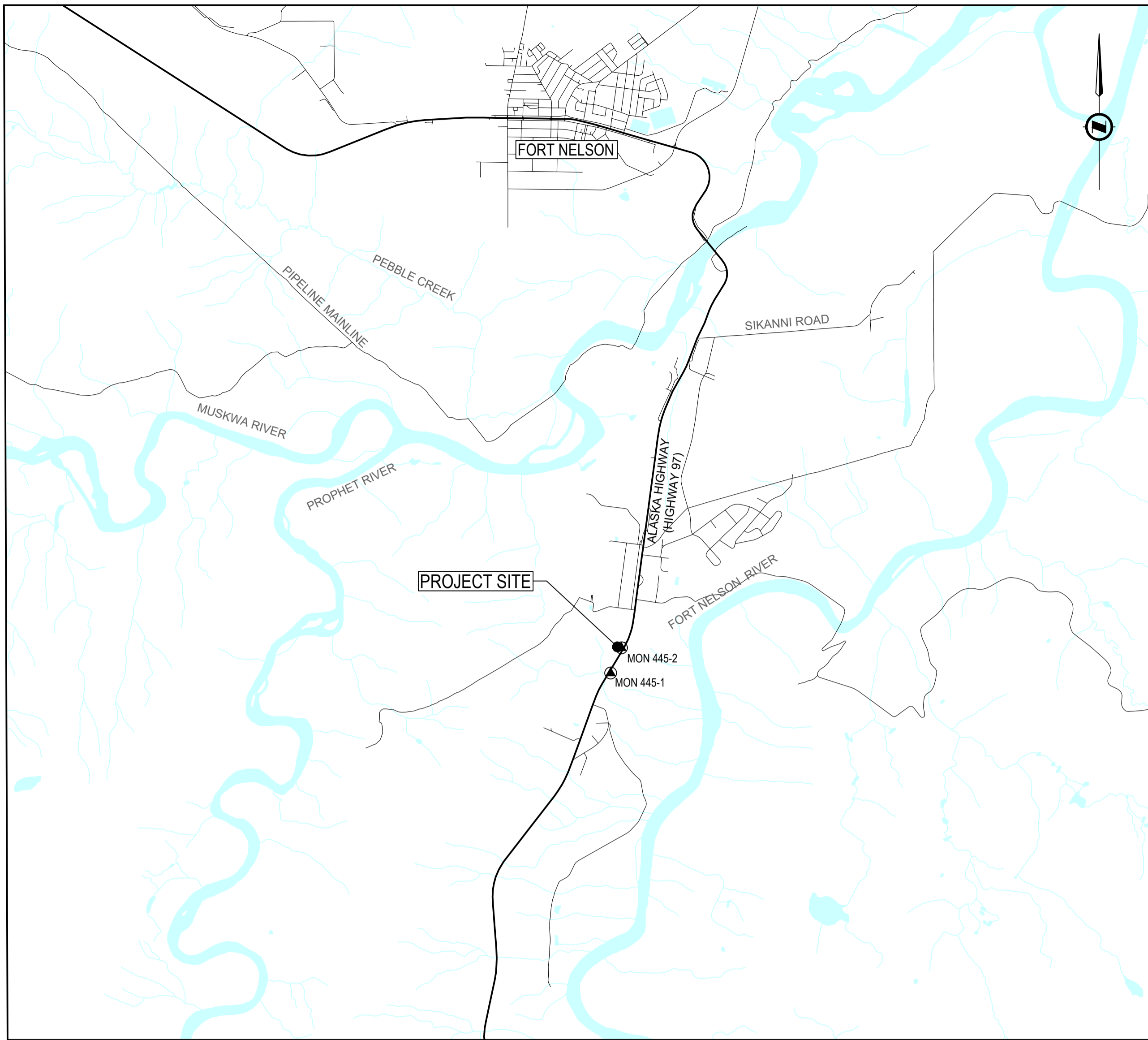
**PROJECT No. R.113313.001**

**ISSUED FOR TENDER  
MAY 14, 2021**

Q:\Vancouver\Transportation\TRN\WHVY\03300 PSCP Salt Sheets\Talisa River - Bridge\Docs\CADD KM 445 Fort Nelson\000 FORT NELSON COVER PAGE.dwg [C001] May 13, 2021 - 11:51:04 am (BY: DEEPWELL, ANDREW)

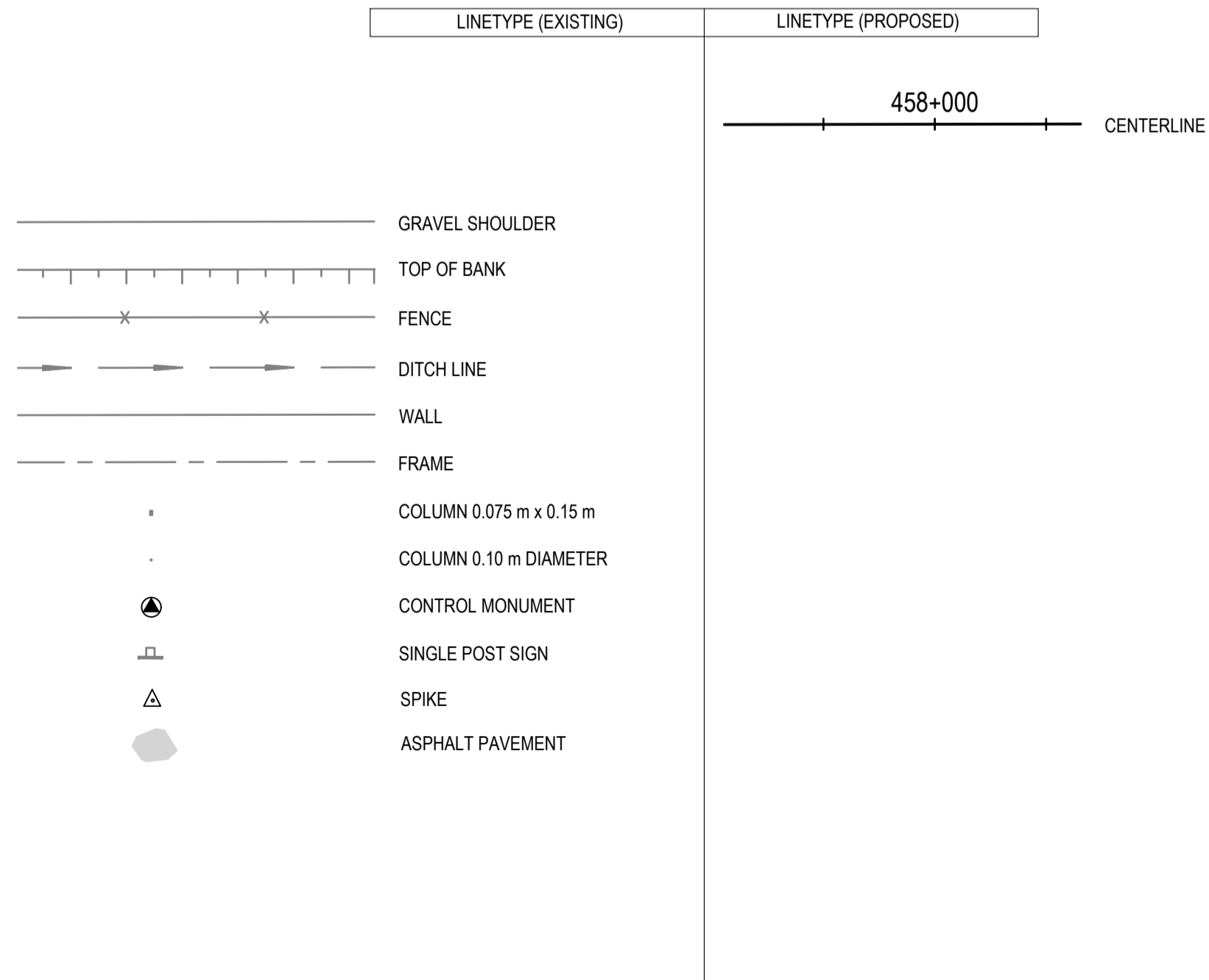


**PROJECT LOCATION PLAN**  
SCALE: 1:1,000,000



**PROJECT SITE KEY PLAN**  
SCALE: 1:50,000

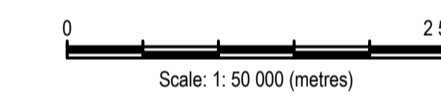
**LEGEND**



DRAWING INDEX	
DRAWING	DESCRIPTION
C000	COVER PAGE
C001	PROJECT LOCATION PLAN, KEY PLAN, DRAWING INDEX & LEGEND
C101	GENERAL ARRANGEMENT PLAN AND CONTROL MONUMENTS
C102	BUILDING & LOCK BLOCK PLAN
C103	SECTIONS THROUGH BUILDING WIDTH & LENGTH AND DETAILS
C104	BUILDING ELEVATION VIEWS
C105	LIGHTING STUDY

**ISSUED FOR TENDER**

- GENERAL NOTES:  
1. DIMENSIONS, COORDINATES, ELEVATIONS ARE IN METRES UNLESS NOTED OTHERWISE.  
2. THE CONTRACTOR IS RESPONSIBLE FOR VERIFYING THE LOCATION OF ALL UTILITIES PRIOR TO CONSTRUCTION.



Revision/Revisión	Description/Description	Date/Date
0	ISSUED FOR TENDER	21/05/14

Public Services and Procurement Canada



Project Title/Titre du projet  
**KM 445 - FORT NELSON SALT SHED REPLACEMENT ALASKA HIGHWAY, BC**

Approved by/Approuvé par  
**S. LI**

Designed by/Concept par  
**T. SMITH**

Drawn by/Dessiné par  
**A. DEEPWELL**

PSPC Project Manager/Administrateur de Projets SPAC  
**A. TAHERI**

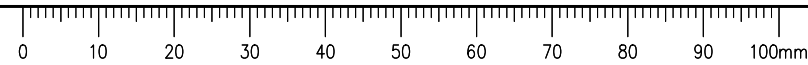
PSPC Architectural and Engineering Resources Manager/Ressources Architectural et de Directeur d'Ingénierie, SPAC

Client/client  
**Public Services and Procurement Canada**

Drawing Title/Titre du dessin

**PROJECT LOCATION PLAN, KEY PLAN, DRAWING INDEX & LEGEND**

Project No./No. du projet	Sheet/Feuille	Revision no./La Révision no.
<b>R.113313.001</b>	<b>C001</b>	<b>0</b>



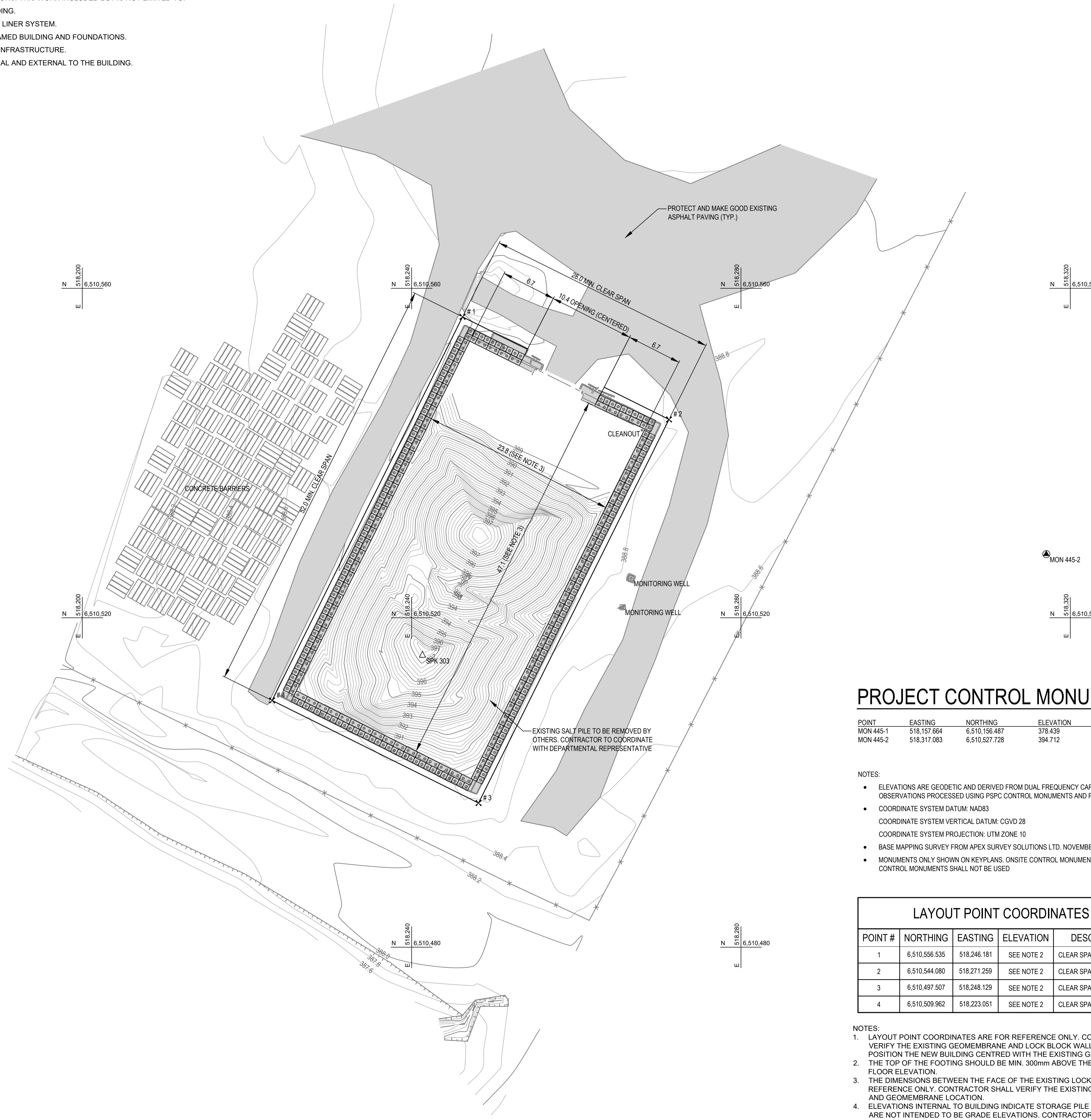
**SUMMARY OF PROJECT SCOPE:**

DETAILED SCOPE SHALL BE AS PER THE PROVIDED SPECIFICATIONS. THIS WORK INCLUDED BUT IS NOT LIMITED TO:

1. DEMOLITION AND DISPOSAL OF THE EXISTING FABRIC BUILDING.
2. PROTECTION AND REUSE OF THE EXISTING GEOMEMBRANE LINER SYSTEM.
3. DESIGN, SUPPLY AND CONSTRUCTION OF A NEW STEEL FRAMED BUILDING AND FOUNDATIONS.
4. INSTALLATION OF LIGHTING AND ASSOCIATED ELECTRICAL INFRASTRUCTURE.
5. MAKING GOOD ALL GRADING AND SURFACING BOTH INTERNAL AND EXTERNAL TO THE BUILDING.

**ISSUED FOR TENDER**

- GENERAL NOTES:
1. DIMENSIONS, COORDINATES, ELEVATIONS ARE IN METRES UNLESS NOTED OTHERWISE.
  2. THE CONTRACTOR IS RESPONSIBLE FOR VERIFYING THE LOCATION OF ALL UTILITIES PRIOR TO CONSTRUCTION.



**PROJECT CONTROL MONUMENTS**

POINT	EASTING	NORTHING	ELEVATION	DESCRIPTION
MON 445-1	518,157.664	6,510,156.467	378.439	MONUMENT
MON 445-2	518,317.083	6,510,527.728	394.712	MONUMENT

NOTES:

- ELEVATIONS ARE GEODETIC AND DERIVED FROM DUAL FREQUENCY CARRIER PHASE GPS. OBSERVATIONS PROCESSED USING PSPC CONTROL MONUMENTS AND POST PROCESSED POSITIONING.
- COORDINATE SYSTEM DATUM: NAD83
- COORDINATE SYSTEM VERTICAL DATUM: CGVD 28
- COORDINATE SYSTEM PROJECTION: UTM ZONE 10
- BASE MAPPING SURVEY FROM APEX SURVEY SOLUTIONS LTD. NOVEMBER 2020
- MONUMENTS ONLY SHOWN ON KEYPLANS. ONSITE CONTROL MONUMENTS NOT LISTED IN THE ABOVE CONTROL MONUMENTS SHALL NOT BE USED

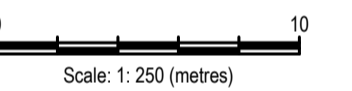
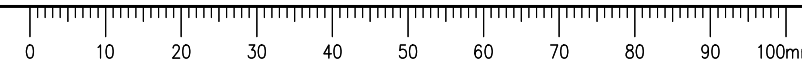
**LAYOUT POINT COORDINATES**

POINT #	NORTHING	EASTING	ELEVATION	DESCRIPTION
1	6,510,556.535	518,246.181	SEE NOTE 2	CLEAR SPAN OF SALT SHED
2	6,510,544.080	518,271.259	SEE NOTE 2	CLEAR SPAN OF SALT SHED
3	6,510,497.507	518,248.129	SEE NOTE 2	CLEAR SPAN OF SALT SHED
4	6,510,509.962	518,223.051	SEE NOTE 2	CLEAR SPAN OF SALT SHED

NOTES:

- LAYOUT POINT COORDINATES ARE FOR REFERENCE ONLY. CONTRACTOR SHALL VERIFY THE EXISTING GEOMEMBRANE AND LOCK BLOCK WALL LOCATION AND POSITION THE NEW BUILDING CENTRED WITH THE EXISTING GEOMEMBRANE.
- THE TOP OF THE FOOTING SHOULD BE MIN. 300mm ABOVE THE PROPOSED FLOOR ELEVATION.
- THE DIMENSIONS BETWEEN THE FACE OF THE EXISTING LOCK BLOCKS ARE FOR REFERENCE ONLY. CONTRACTOR SHALL VERIFY THE EXISTING LOCK BLOCK AND GEOMEMBRANE LOCATION.
- ELEVATIONS INTERNAL TO BUILDING INDICATE STORAGE PILE ELEVATIONS AND ARE NOT INTENDED TO BE GRADE ELEVATIONS. CONTRACTOR SHALL SURVEY EXISTING GRADE FOLLOWING REMOVAL OF MATERIAL.

Q:\Vancouver\Transportation\TRN\VHWY03300 PSPC Salt Sheds\Talisa River - Bridge\Decks\CADD\KM 445 - Fort Nelson\0101-105 FORT NELSON PLAN.dwg [10] May 13, 2021 - 1:32:27 pm (BY: DEEPWELL, ANDREW)



Revision/Revisión	Description/Description	Date/Date
0	ISSUED FOR TENDER	21/05/14

Public Services and Procurement Canada



Project Title/Titre du projet  
**KM 445 - FORT NELSON SALT SHED REPLACEMENT ALASKA HIGHWAY, BC**

Approved by/Approuvé par  
**S. LI**

Designed by/Concept par  
**T. SMITH**

Drawn by/Dessiné par  
**A. DEEPWELL**

PSPC Project Manager/Administrateur de Projets SPAC  
**A. TAHERI**

PSPC Architectural and Engineering Resources Manager/Ressources Architectural et de Directeur d'Ingénierie, SPAC

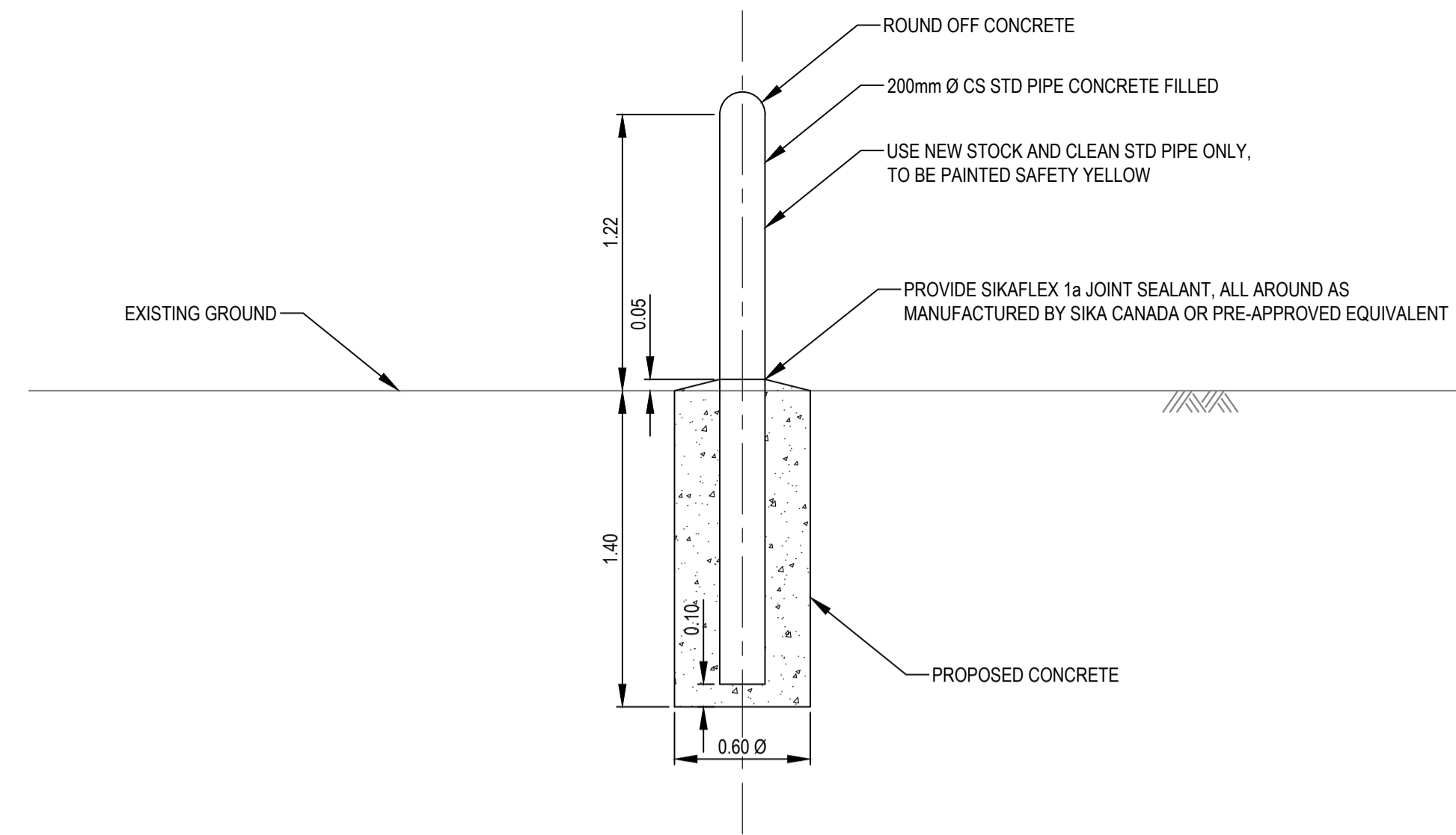
Client/client  
**Public Services and Procurement Canada**

Drawing Title/Titre du dessin  
**GENERAL ARRANGEMENT PLAN AND CONTROL MONUMENTS**

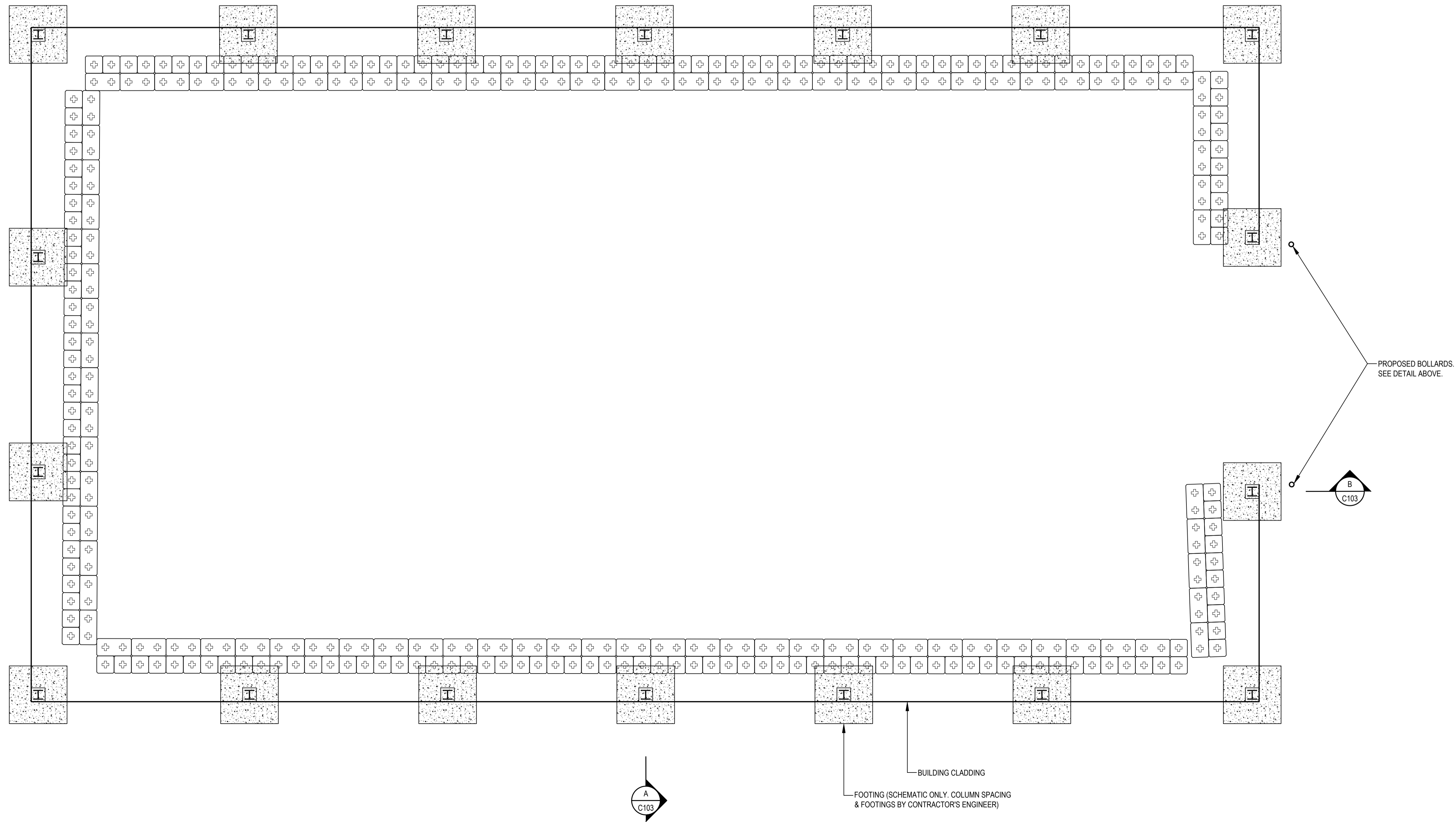
Project No./No. du projet	Sheet/Feuille	Revision no./La Révision no.
<b>R.113313.001</b>	<b>C101</b>	<b>0</b>

GEOMEMBRANE & LOCK BLOCK NOTES:

- INSIDE FACE OF LOCK BLOCKS IN NEW STEEL BUILDING SHALL BE PLACED AT SAME LOCATION AS EXISTING INSIDE FACE OF LOCK BLOCKS INSIDE CURRENT FABRIC BUILDING. THIS IS INTENDED TO FACILITATE THE REUSE OF THE EXISTING BELOW GRADE GEOMEMBRANE. DIMENSIONS SHOWN ARE TAKEN FROM SURVEY OF EXISTING STRUCTURE. CONTRACTOR SHALL FIELD CONFIRM MEASUREMENTS PRIOR TO CONSTRUCTION.
- THE EXISTING PROTECTIVE GEOMEMBRANE WAS INSTALLED AS PER PROJECT NUMBER 859645. THE CONTRACTOR SHALL REFERENCE SHEETS 2 THROUGH 4 FOR INFORMATION ON THE EXISTING INSTALLATION.
- IF NECESSARY TO PROTECT THE GEOMEMBRANE DURING THE COURSE OF WORK, THE EXISTING PROTECTIVE GEOMEMBRANE SHALL BE:
  - REMOVED FROM THE FACE OF THE EXISTING LOCK BLOCKS, WITH ALL REASONABLE EFFORT MADE TO PREVENT DAMAGE TO THE GEOMEMBRANE.
  - ROLLED BACK AWAY FROM THE WORK AND PROTECTED FROM MECHANICAL DAMAGE BY METHODS SUCH AS GRANULAR COVER, ROAD PLATES OR RESTRICTING TRAFFIC OVER THE EXPOSED PORTION OF GEOMEMBRANE. THE CONTRACTOR SHALL PROPOSE A METHOD FOR PROTECTION TO THE DEPARTMENTAL REPRESENTATIVE FOR APPROVAL PRIOR TO UNDERTAKING THE WORK.
  - FOLLOWING INSTALLATION OF FOUNDATIONS AND BUILDING, FASTENING BACK INTO PLACE ON THE INSIDE FACE OF LOCK BLOCKS AS INDICATED ON THIS PAGE
- THE CONTRACTOR SHALL CAREFULLY EXCAVATE TO LOCATE THE GEOMEMBRANE IN AREAS WHERE IT IS NOT FASTENED TO LOCK BLOCKS ABOVE GRADE.
- IF, IN THE DETERMINATION OF THE CONTRACTOR, FOUNDATION WORK CANNOT BE ECONOMICALLY PERFORMED WITHOUT REMOVING THE EXISTING GEOMEMBRANE, THE CONTRACTOR SHALL BE RESPONSIBLE FOR ALL WORK AND COSTS RELATING TO REMOVING AND MAKING GOOD THE GEOMEMBRANE INSTALLATION TO COMPLY WITH THE ORIGINAL GEOMEMBRANE CONSTRUCTION DRAWINGS.

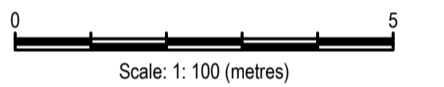


TYPICAL BOLLARD  
SCALE 1:25



ISSUED FOR TENDER

- GENERAL NOTES:
- DIMENSIONS, COORDINATES, ELEVATIONS ARE IN METRES UNLESS NOTED OTHERWISE.
  - THE CONTRACTOR IS RESPONSIBLE FOR VERIFYING THE LOCATION OF ALL UTILITIES PRIOR TO CONSTRUCTION.



0	ISSUED FOR TENDER	21/05/14
Revision/	Description/Description	Date/Date
Revisão/		
Client/client		

Public Services and Procurement Canada



Project title/Titre du projet  
**KM 445 - FORT NELSON SALT SHED REPLACEMENT ALASKA HIGHWAY, BC**

Approved by/Approuvé par  
**S. LI**

Designed by/Concept par  
**T. SMITH**

Drawn by/Dessiné par  
**A. DEEPWELL**

PSPC Project Manager/Administrateur de Projets SPAC  
**A. TAHERI**

PSPC Architectural and Engineering Resources Manager/Ressources Architectural et de Directeur d'Ingénierie, SPAC

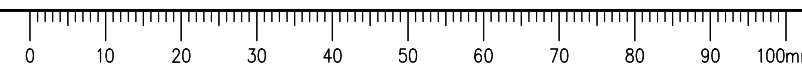
Client/client  
**Public Services and Procurement Canada**

Drawing title/Titre du dessin

**BUILDING & LOCK BLOCK PLAN**

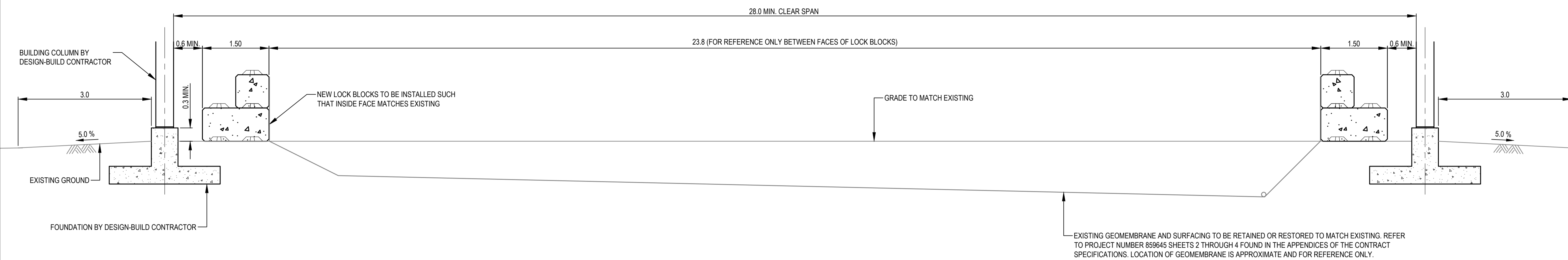
Project No./No. du projet <b>R.113313.001</b>	Sheet/Feuille <b>C102</b>	Revision no./La Révision no. <b>0</b>
--	------------------------------	--

Q:\Vancouver\Transportation\TRN\VHWY03000 PSPC Salt Sheets\Telsa River - Bridge Decks\CADD\KM 445 Fort Nelson\C101-105 FORT NELSON PLAN.dwg [C102] May 13, 2014 - 1:32:30 pm (BY: DEEPWELL, ANDREW)

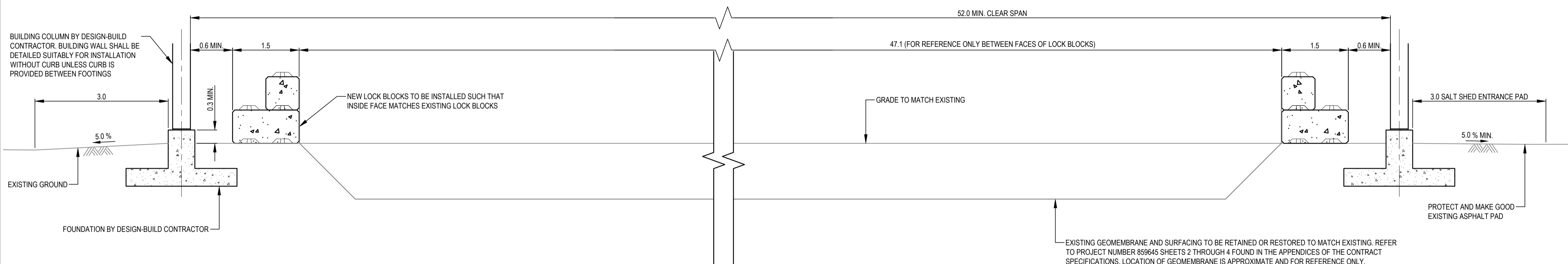


# ISSUED FOR TENDER

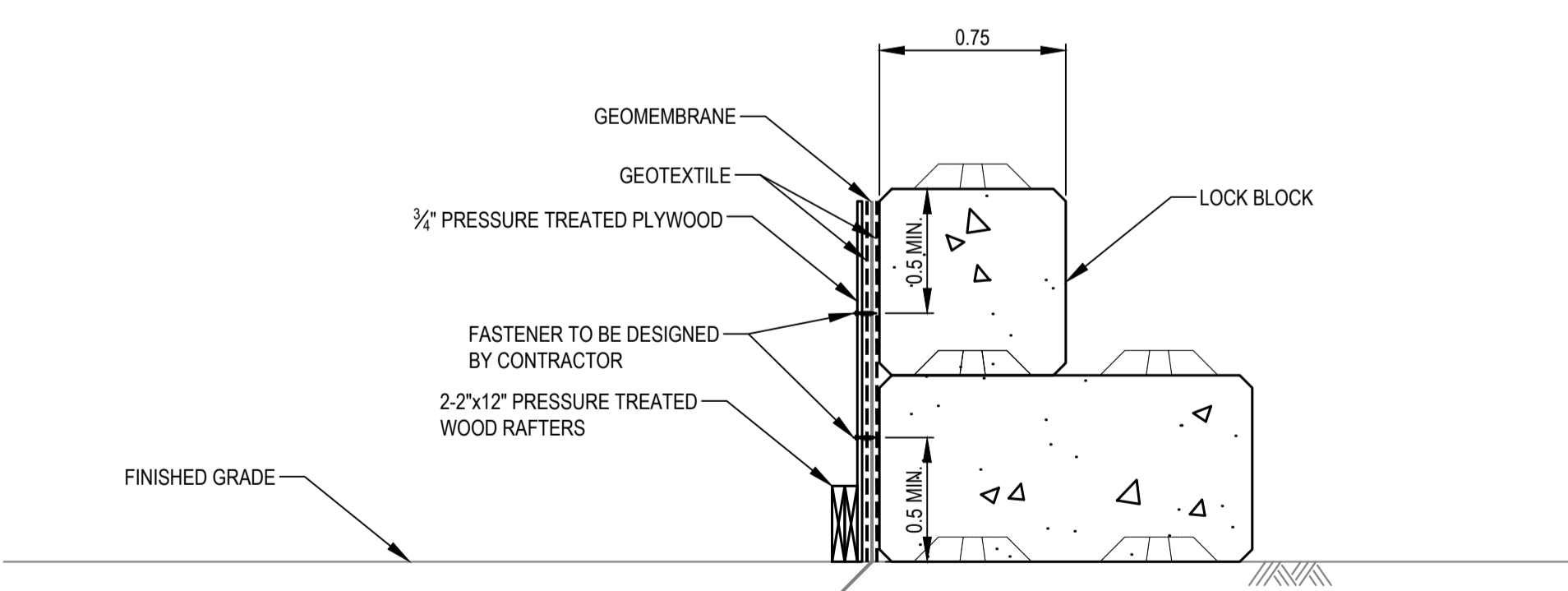
- GENERAL NOTES:
- DIMENSIONS, COORDINATES, ELEVATIONS ARE IN METRES UNLESS NOTED OTHERWISE.
  - THE CONTRACTOR IS RESPONSIBLE FOR VERIFYING THE LOCATION OF ALL UTILITIES PRIOR TO CONSTRUCTION.



SECTION A  
1:50

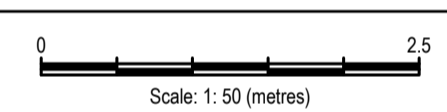


SECTION B  
1:50



TYPICAL GEOMEMBRANE FASTENING DETAIL  
SCALE 1:25

- NOTE:
- IF THE EXISTING GEOMEMBRANE IS NOT OF SUFFICIENT LENGTH TO PASS THE JOINT BETWEEN LOCK BLOCKS, ADDITIONAL LENGTH SHALL BE JOINED SUCH THAT GEOMEMBRANE REACHES TOP OF LOCK BLOCK WALL. SAMPLE JOINTS SHALL BE PERFORMED ON SMALL AREAS AND TESTED PRIOR TO PROCEEDING WITH PRODUCTION WELDS. JOINING SHALL BE DONE IN COMPLIANCE WITH THE GEOMEMBRANE MANUFACTURER'S RECOMMENDATIONS AND AS APPROVED BY THE DEPARTMENTAL REPRESENTATIVE.



Revision/Évaluation	Description/Description	Date/Date
0	ISSUED FOR TENDER	21/05/14

Public Services and Procurement Canada



Project Title/Titre du projet  
**KM 445 - FORT NELSON SALT SHED REPLACEMENT ALASKA HIGHWAY, BC**

Approved by/Approuvé par  
**S. LI**

Designed by/Concept par  
**T. SMITH**

Drawn by/Dessiné par  
**A. DEEPWELL**

PSPC Project Manager/Administrateur de Projets SPAC  
**A. TAHERI**

PSPC Architectural and Engineering Resources Manager/Ressources Architectural et de Directeur d'Ingénierie, SPAC

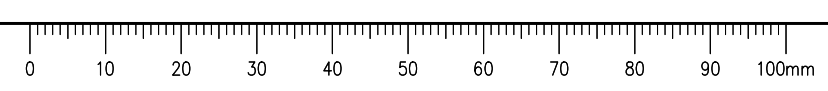
Client/client  
**Public Services and Procurement Canada**

Drawing Title/Titre du dessin

## SECTIONS THROUGH BUILDING WIDTH & LENGTH AND DETAILS

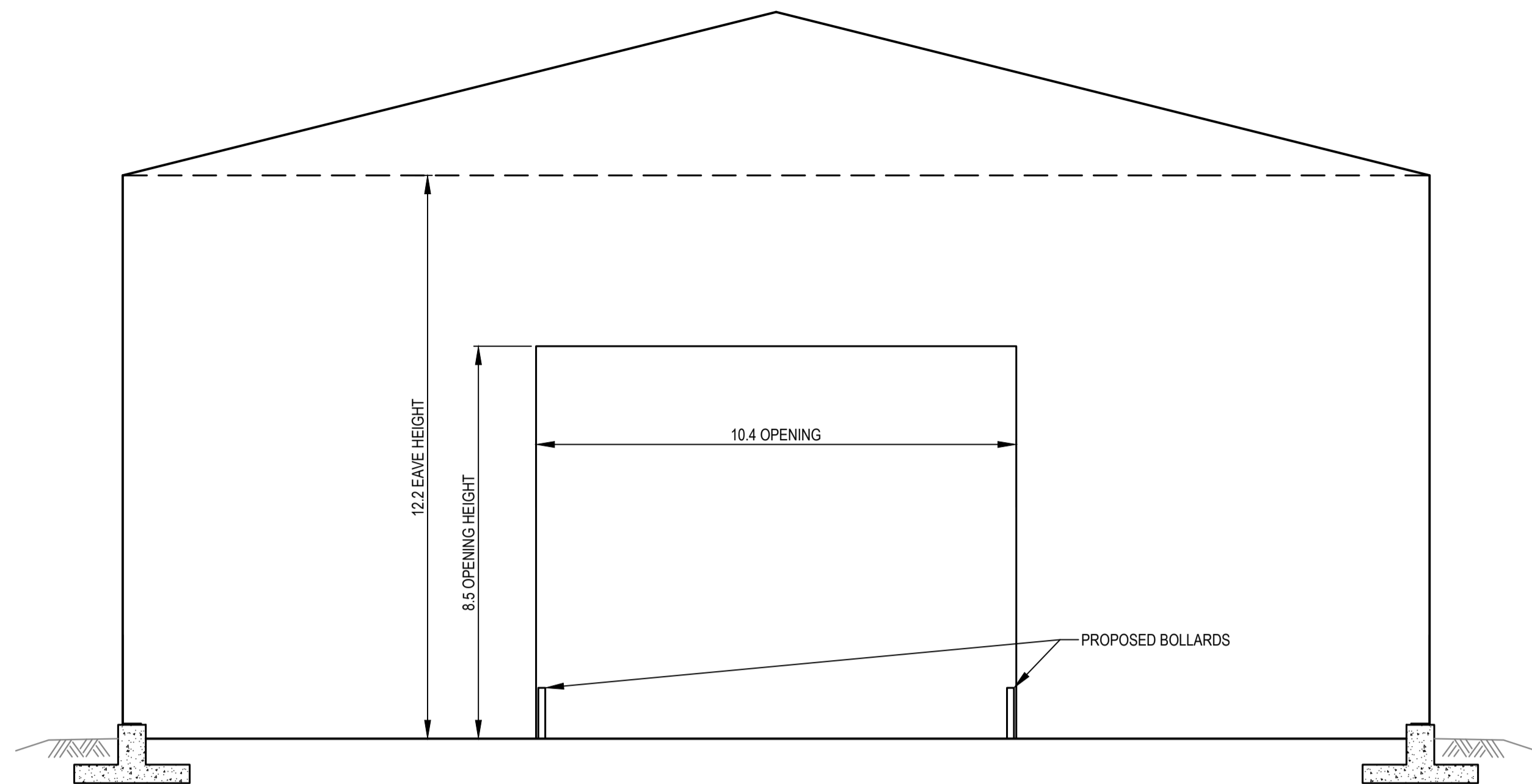
Project No./No. du projet <b>R.113313.001</b>	Sheet/Feuille <b>C103</b>	Revision no./La Révision no. <b>0</b>
--	------------------------------	--

Q:\Vancouver\Transportation\TRN\WHY\Projects\TRN\WHY\03300 PSPC Salt Sheds\Talisa River - Bridge\Decks\CADD\KM 445 Fort Nelson\01-105 FORT NELSON PLAN.dwg [C103] May 13, 2014 - 1:32:36 pm (BY: DEEPWELL, ANDREW)

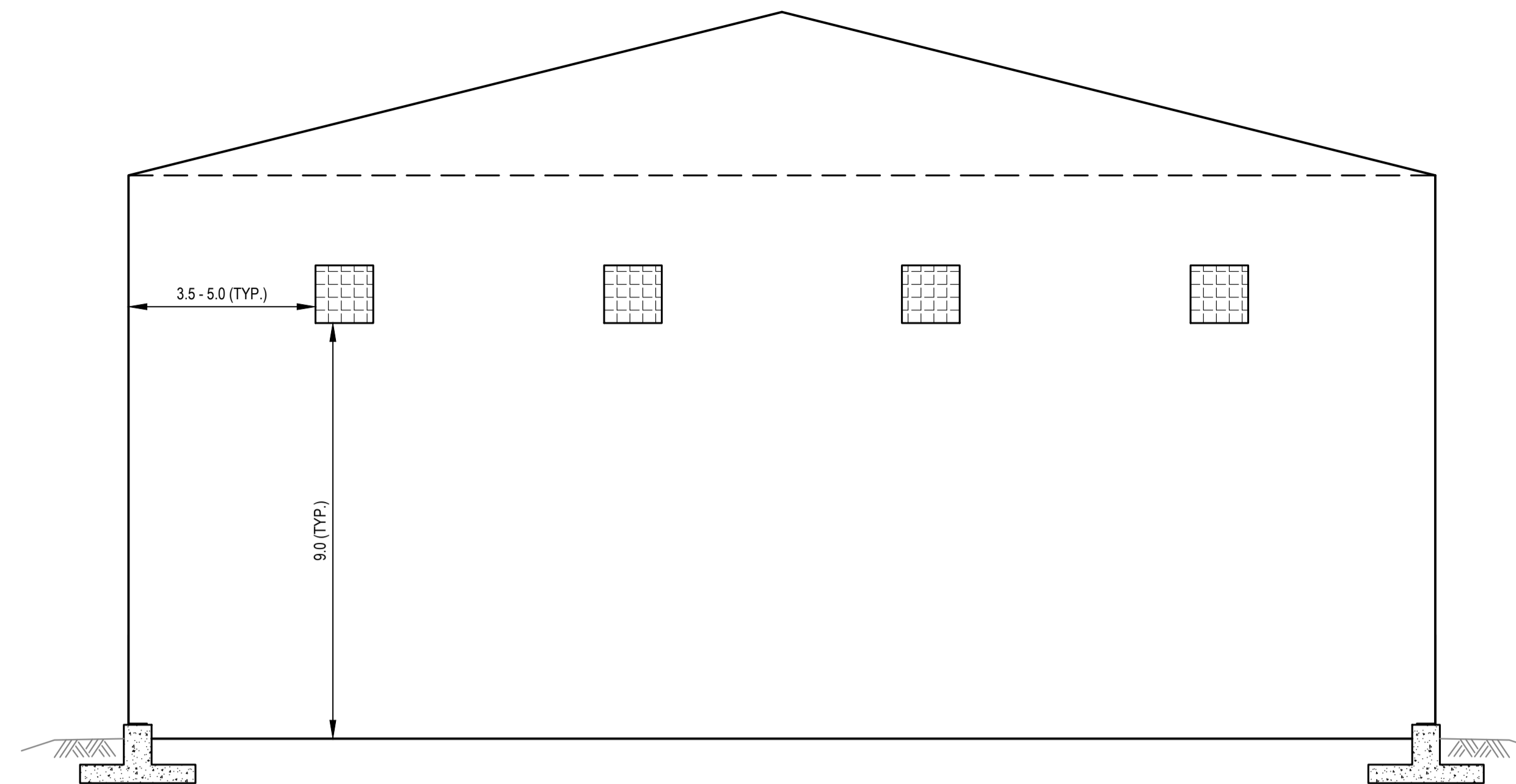


# ISSUED FOR TENDER

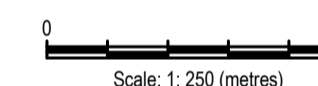
- GENERAL NOTES:
1. DIMENSIONS, COORDINATES, ELEVATIONS ARE IN METRES UNLESS NOTED OTHERWISE.
  2. THE CONTRACTOR IS RESPONSIBLE FOR VERIFYING THE LOCATION OF ALL UTILITIES PRIOR TO CONSTRUCTION.



BUILDING ENDWALL ELEVATION LOOKING  
SOUTH-WEST (APPROX.)  
SCALE 1:100



BUILDING ENDWALL ELEVATION LOOKING  
NORTH-EAST (APPROX.)  
SCALE 1:100



Revision/Évaluation	Description/Description	Date/Date
0	ISSUED FOR TENDER	21/05/14

Public Services and Procurement Canada



Project title/Titre du projet  
**KM 445 - FORT NELSON SALT SHED REPLACEMENT ALASKA HIGHWAY, BC**

Approved by/Approuvé par  
**S. LI**

Designed by/Concept par  
**T. SMITH**

Drawn by/Dessiné par  
**A. DEEPWELL**

PSPC Project Manager/Administrateur de Projets SPAC  
**A. TAHERI**

PSPC Architectural and Engineering Resources Manager/Ressources Architectural et de Directeur d'Ingénierie, SPAC

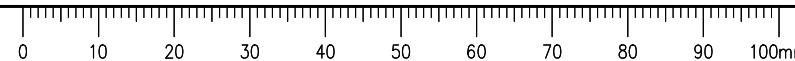
Client/client  
**Public Services and Procurement Canada**

Drawing title/Titre du dessin

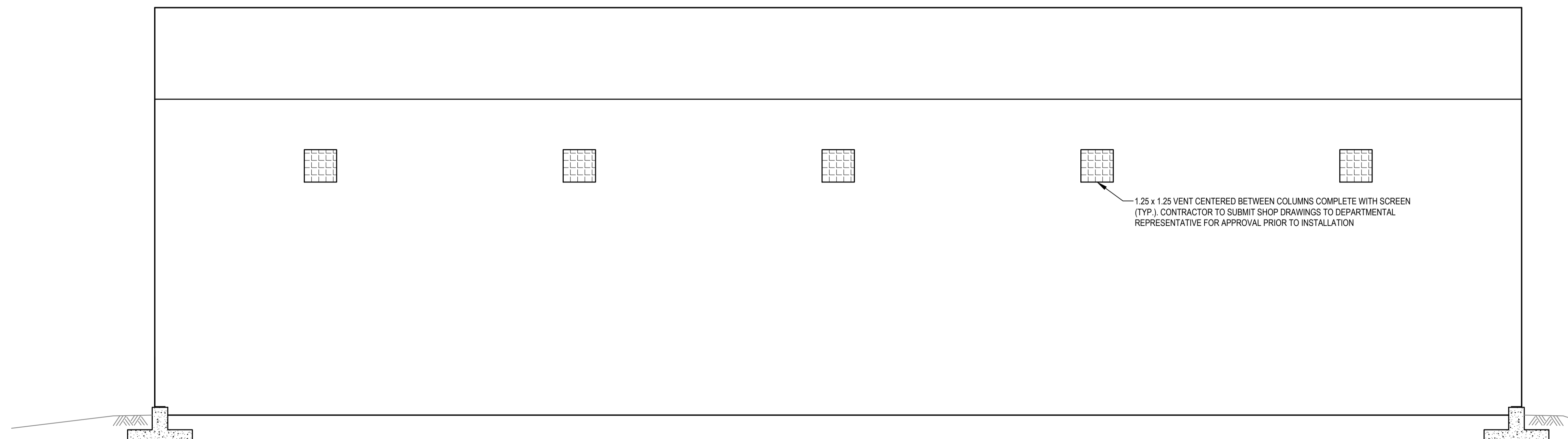
## BUILDING ELEVATION VIEWS

Project No./No. du projet	Sheet/Feuille	Revision no./La Révision no.
<b>R.113313.001</b>	<b>C104</b>	<b>0</b>

Q:\Vancouver\Transportation\TRN\WHY\Projects\TRN\WHY\03300 PSPC Salt Sheds\Talisa River - Bridge\Decks\CADD\KM 445 Fort Nelson\01-105 FORT NELSON PLAN.dwg [C:104] May 13, 2014 - 1:32:40 pm (BY: DEEPWELL, ANDREW)

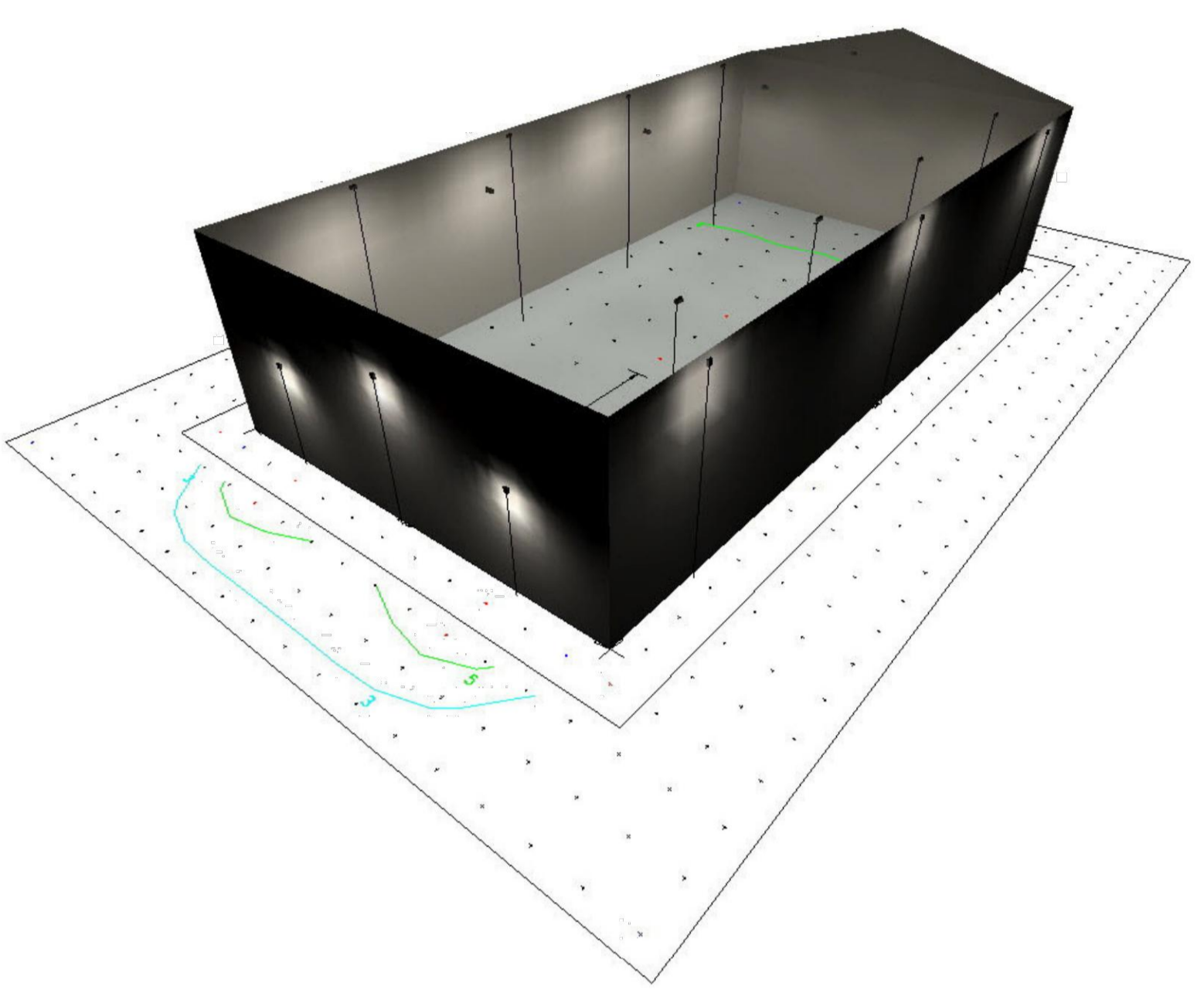


BUILDING SIDEWALL ELEVATION  
SCALE 1:100



# ISSUED FOR TENDER

GENERAL NOTES:  
1. DIMENSIONS, COORDINATES, ELEVATIONS ARE IN METRES UNLESS NOTED OTHERWISE.  
2. THE CONTRACTOR IS RESPONSIBLE FOR VERIFYING THE LOCATION OF ALL UTILITIES PRIOR TO CONSTRUCTION.



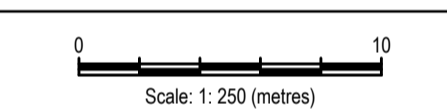
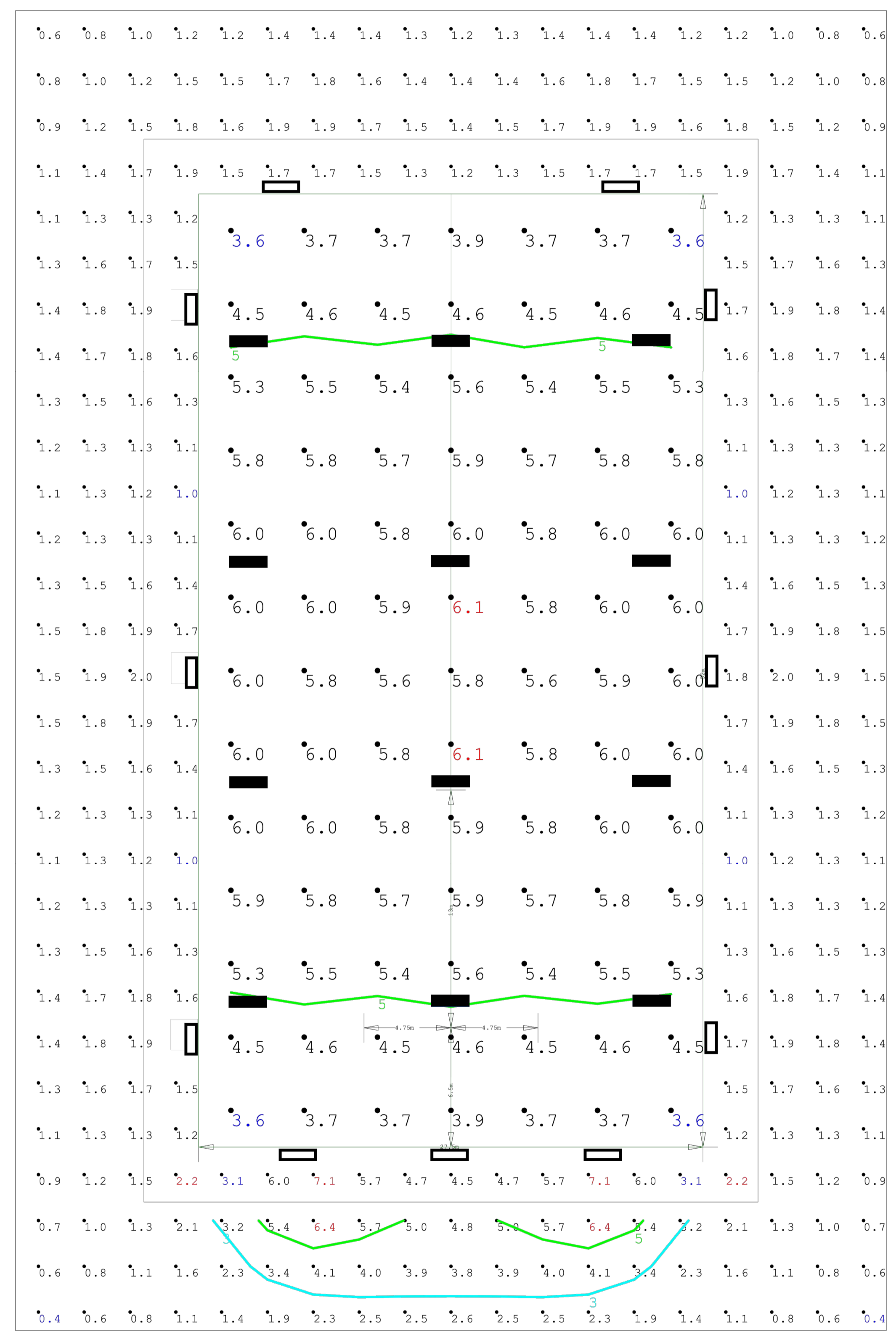
Render View

Symbol	Qty	Label	Arrangement	Total Lamp Lumens	LLF	Description
■	11	AXCL6A-W	SINGLE	N.A.	1.000	AXCL6A-W
■	12	NFFLD-C25-D-UNV-66	SINGLE	N.A.	1.000	NFFLD-C25-D-UNV-66

Label	CalcType	Units	Avg	Max	Min	Avg/Min	Max/Min
Ext_Ground_10m	Illuminance	Fc	1.67	6.4	0.4	4.18	16.00
Ext_Ground_Front_3m	Illuminance	Fc	5.25	7.1	3.1	1.69	2.29
Ext_Ground_Sides_3m	Illuminance	Fc	1.45	2.2	1.0	1.45	2.20
Salt_Shed_Floor	Illuminance	Fc	5.27	6.1	3.6	1.46	1.69

LumNo	Label	X	Y	Z	Orient	Tilt	X-Aimpt	Y-Aimpt	Z-Aimpt	TCF
1	AXCL6A-W	4.5	52.25	12	90	0	4.5	52.25	0	1
2	AXCL6A-W	23	52.25	12	90	0	23	52.25	0	1
3	AXCL6A-W	-0.25	46	12	180	0	-0.25	46	0	1
4	AXCL6A-W	27.75	46	12	0	0	27.75	46	0	1
5	NFFLD-C25-D-UNV-66	2.875	44	12.75	180	0	2.875	44	0	1
6	NFFLD-C25-D-UNV-66	13.75	44	15	90	0	13.75	44	0	1
7	NFFLD-C25-D-UNV-66	24.625	44	12.75	0	0	24.625	44	0	1
8	NFFLD-C25-D-UNV-66	2.875	32	12.75	180	0	2.875	32	0	1
9	NFFLD-C25-D-UNV-66	13.75	32	15	90	0	13.75	32	0	1
10	NFFLD-C25-D-UNV-66	24.625	32	12.75	0	0	24.625	32	0	1
11	AXCL6A-W	-0.25	26	12	180	0	-0.25	26	0	1
12	AXCL6A-W	27.75	26	12	0	0	27.75	26	0	1
13	NFFLD-C25-D-UNV-66	2.875	20	12.75	180	0	2.875	20	0	1
14	NFFLD-C25-D-UNV-66	13.75	20	15	270	0	13.75	20	0	1
15	NFFLD-C25-D-UNV-66	24.625	20	12.75	0	0	24.625	20	0	1
16	NFFLD-C25-D-UNV-66	2.875	8	12.75	180	0	2.875	8	0	1
17	NFFLD-C25-D-UNV-66	13.75	8	15	270	0	13.75	8	0	1
18	NFFLD-C25-D-UNV-66	24.625	8	12.75	0	0	24.625	8	0	1
19	AXCL6A-W	-0.25	6	12	180	0	-0.25	6	0	1
20	AXCL6A-W	27.75	6	12	0	0	27.75	6	0	1
21	AXCL6A-W	5.5	-0.25	6.5	270	0	5.5	-0.25	0	1
22	AXCL6A-W	13.75	-0.25	9	270	0	13.75	-0.25	0	1
23	AXCL6A-W	22	-0.25	6.5	270	0	22	-0.25	0	1

- NOTES:
- CONTRACTOR SHALL CONFIRM THE LOCATION OF THE EXISTING SERVICE ENTRANCE ELECTRICAL PANEL.
  - CONTRACTOR SHALL CONNECT THE NEW SALT SHED ELECTRICAL SUB PANEL TO THE MAIN SERVICE ENTRANCE ELECTRICAL PANEL VIA UNDERGROUND CONDUIT. DESIGNED BY AND SEALED BY A PROFESSIONAL ENGINEER. SEALED DRAWINGS SHALL BE SUBMITTED TO THE DEPARTMENTAL REPRESENTATIVE FOR APPROVAL PRIOR TO INSTALLATION.
  - CONTRACTOR SHALL COORDINATE WITH DEPARTMENTAL REPRESENTATIVE TO CONNECT TO OR DISCONNECT FROM THE ELECTRICAL PANEL.



Revision/Évaluation	Description/Description	Date/Date
0	ISSUED FOR TENDER	21/05/14

Client/client  
**Public Services and Procurement Canada**



Project title/Titre du projet  
**KM 445 - FORT NELSON SALT SHED REPLACEMENT ALASKA HIGHWAY, BC**

Approved by/Approuvé par  
**S. LI**

Designed by/Concept par  
**T. MA**

Drawn by/Dessiné par  
**A. DEEPWELL**

PSPC Project Manager/Administrateur de Projets SPAC  
**A. TAHERI**

PSPC Architectural and Engineering Resources Manager/Ressources Architectural et de Directeur d'Ingénierie, SPAC

Client/client  
**Public Services and Procurement Canada**

Drawing title/Titre du dessin  
**LIGHTING STUDY**

Project No./No. du projet	Sheet/Feuille	Revision no./La Révision no.
<b>R.113313.001</b>	<b>C105</b>	<b>0</b>

Q:\Vancouver\Transportation\TRN\WHY\Projects\TRN\WHY\03000 PSPC Salt Sheds-Telisa River-Bridge Decks\CADD\KM 445 Fort Nelson\101-105 FORT NELSON PLAN.dwg (C105) May 14, 2021 - 9:26:51 am (BY: DEEPWELL, ANDREW)

