



RETURN BIDS TO:

RETOURNER LES SOUMISSIONS À:

Bid Receiving - PWGSC / Réception des soumissions -
TPSGC

11 Laurier St./11, rue Laurier

Place du Portage, Phase III

Core 0B2 / Noyau 0B2

Gatineau, Québec K1A 0S5

Bid Fax: (819) 997-9776

SOLICITATION AMENDMENT MODIFICATION DE L'INVITATION

The referenced document is hereby revised; unless otherwise indicated, all other terms and conditions of the Solicitation remain the same.

Ce document est par la présente révisé; sauf indication contraire, les modalités de l'invitation demeurent les mêmes.

Comments - Commentaires

Vendor/Firm Name and Address

Raison sociale et adresse du
fournisseur/de l'entrepreneur

Issuing Office - Bureau de distribution

Furniture Division/Division des ameublements
L'Esplanade Laurier,
East Tower 7th Floor
Tour est 7^e étage,
140 O'Connor, Street,
140 O'Connor, rue O'Connor,
Ottawa
Ontario
K1A 0R5

Title - Sujet CRA - Categories 6A and 6F CRA - Categories 6A and 6F	
Solicitation No. - N° de l'invitation EP916-212289/B	Amendment No. - N° modif. 001
Client Reference No. - N° de référence du client 20212289	Date 2021-06-21
GETS Reference No. - N° de référence de SEAG PW-\$\$\$PQ-991-80101	
File No. - N° de dossier pq991.EP916-212289	CCC No./N° CCC - FMS No./N° VME
Solicitation Closes - L'invitation prend fin at - à 02:00 PM Eastern Daylight Saving Time EDT on - le 2021-06-28 Heure Avancée de l'Est HAE	
F.O.B. - F.A.B. Plant-Usine: <input type="checkbox"/> Destination: <input type="checkbox"/> Other-Autre: <input type="checkbox"/>	
Address Enquiries to: - Adresser toutes questions à: Ouimet, Daphné	Buyer Id - Id de l'acheteur pq991
Telephone No. - N° de téléphone (343) 551-0104 ()	FAX No. - N° de FAX () -
Destination - of Goods, Services, and Construction: Destination - des biens, services et construction: See Herein	

Instructions: See Herein

Instructions: Voir aux présentes

Delivery Required - Livraison exigée	Delivery Offered - Livraison proposée
Vendor/Firm Name and Address Raison sociale et adresse du fournisseur/de l'entrepreneur	
Telephone No. - N° de téléphone Facsimile No. - N° de télécopieur	
Name and title of person authorized to sign on behalf of Vendor/Firm (type or print) Nom et titre de la personne autorisée à signer au nom du fournisseur/ de l'entrepreneur (taper ou écrire en caractères d'imprimerie)	
Signature	Date

Amendment 001 is raised to modify the Request for Proposal and to answer questions received from industry as follows:

- Respond to questions received from the industry;
- Replace the Furniture Plan;
- Revise Annex A – Requirement and Basis of Payment, replace Tables 1 – Product Table for the following category:
 - Category 6A.

1. Questions and Answers

Question 1

Category 6A Item #11.

Would the client remove this NSA product and put it into its own category?

Answer 1

No we will not move the NSA product into its own category, however specifications for item #11 have been modified.

Please see revised Category 6A - Table 1 – Product Table included in this amendment (001).

Question 2

Category 6A Item #11.

Would it be acceptable for the high back screen to be 42"h?

Answer 2

Yes. We have modified the specifications for this product and have lowered the overall height to 42".

Please see revised Category 6A - Table 1 – Product Table included in this amendment (001).

Question 3

Category 6A Item #1.

Would you accept a swivel/return base option this type of base as an acceptable option?

Answer 3

Yes, we will also accept a swivel/return base, however, it must be a pedestal swivel base with an auto-return mechanism that pivots on the pedestal's axis.

GoCUID 6SLCOAXXWUXXXXXMXXX will also be accepted.

Please see revised Category 6A - Table 1 – Product Table included in this amendment (001).

Question 4

Category 6A Item #3

Are the following dimensions acceptable : 32W 28D 32.5H?

Answer 4

Yes, these dimensions will be accepted.

Please see revised Category 6A - Table 1 – Product Table included in this amendment (001)

Question 5

Category 6A Item #11.

Is it acceptable to have the screen integrated into the sofa back as per the following image and with the following dimensions 28W 28D 47H :



Answer 5

Yes, it is acceptable for the side screen to be integrated into the back, but please note that the specifications have changed for this product and high sides are required on both the left and right sides.

Please see revised Category 6A - Table 1 – Product Table included in this amendment (001).

2. The Furniture plan provided with the Request for proposal is deleted in its entirety:

REPLACE BY: The attached Revised Furniture Plan

3. Annex A – Requirement and Basis of Payment is deleted in its entirety:

REPLACE BY:

Please note: This bid solicitation EP916-212289/B replaces previous requirement from Request for Proposal EP916-212452/A for Category 6A.

TABLE OF CONTENTS

Section 1 – Invitation and Instructions to Bidders

Section 2 – Resulting Contract including a list of required goods and services

SECTION 1 – INVITATION AND INSTRUCTIONS TO BIDDERS

Step 1. For Tier 2 and Tier 3 only (If Tier 1, skip this step and proceed with step 2)

Is this a Manufacturer Product Specific Procurement? No

Step 2. ☒ Competitive or ☐ Non-Competitive

For competitive Requirements:

A bid must comply with the requirements of the bid solicitation and meet all mandatory technical evaluation criteria to be declared responsive. The responsive bid with the lowest evaluated price will be recommended for award of a contract.

For Competitive Requirements when only one bid is received:

The Bidder must provide the following information AFTER bid closing, if requested to do so by Canada:

- One or more of the following price justifications:
 1. a current published price list indicating the percentage discount available to Canada; or
 2. a copy of paid invoices for the like quality and quantity of the goods, services or both sold to other customers; or
 3. a price breakdown showing the cost of direct labour, direct materials, purchased items, engineering and plant overheads, general and administrative overhead, transportation, etc., and profit; or
 4. any other supporting documentation as requested by Canada.

Step 3. ☒ General or ☐ PSAB

Terms of the RFB:

This RFB is issued pursuant to the Supplier's Furniture for Workspaces Supply Arrangement (SA) that forms part of the series of SAs issued by PWGSC with the number E60PQ-140003/PQ. The terms and conditions in the Supplier's SA apply to and form part of this RFB. Bidders who submit a bid agree to be bound by those terms and conditions as well as the terms and conditions in this RFB.

The WTCM is the Workspaces Terms and Conditions Manual that contains all terms and conditions in full text that form part of individual RFBs under this SA.

The Bidder must provide the following information WITH the bid:

- The information requested by Canada in Annex A herein.

Bid Evaluation

This article is completed if non-Government of Canada personnel will evaluate bids.

An evaluation team composed of representatives of Canada will evaluate the bids.

Identified User's (IU) Department/Agency/Crown Corporation: Contact for this RFB:	See Section 2, article 4.1 below.
RFB Closing - Submit Bid: Bids must be submitted on the date and at the time indicated below. ***It is preferred that Bidders submit their bid with epost Connect service***	
By no later than date and time:	Please refer to Cover Page
To physical location ***It is preferred that Bidders submit their bid with epost Connect service***	Bid Receiving Unit – PWGSC 11 Laurier Street Place du Portage, Phase III Core 0B2 Gatineau, Quebec K1A 0S5
Additional Bid Submission option epost Connect service:	NCR address ONLY: tpsgc.dgareceptiondessoumissions-abbidReceiving.pwgsc@tpsgc-pwgsc.gc.ca
RFB Enquiries	
Unless a different period is listed in the adjacent column, Bidders may submit enquires about the RFB to the Contracting Authority two business days prior to the RFB closing date. Enquiries received after the timeline indicated may not be answered.	4 business days

SECTION 2 - RESULTING CONTRACT CLAUSES

1.	Terms and Conditions of the Contract	
	The terms and conditions of Parts 6B and 6C of the Supplier's SA within the series E60PQ-140003/PQ apply to and form part of this Contract.	
2.	Security Requirement (the checked article applies)	
2.1	The applicable security requirement(s) is (are) set out in the Security Requirement Check List attached as Annex B of this contract. The Contractor must fulfill the security requirements by meeting the terms below.	
	a.	X Contractor may be escorted; possession of security clearance not required. Contractor personnel MAY NOT ENTER NOR PERFORM WORK ON sites where PROTECTED or CLASSIFIED information or assets are kept, without an escort provided by the department or agency for which the work is being performed.
	b.	Possession of security clearance(s) is required. The Contractor must meet the security clearance requirements contained in the clausing in Annex B herein.

	c.	There is no security requirement associated with this contract.	
3.	Requirement		
3.1	The Contractor must perform the Work listed in Annex A herein.		
4.	Authorities		
4.1	Contracting Authority (IU)		
	Name:	Daphné Ouimet	
	Title:	Supply Specialist	
	Department/Agency/Crown Corporation:	Public Services and Procurement Canada	
	Address:	140 rue O'Connor, Street, Ottawa, Ontario K1A 0R5	
	Telephone No.:	(343) 551-0104	
	E-mail address:	Daphne.Ouimet@tpsgc-pwgsc.gc.ca	
4.2	Project Authority <i>[To be completed at contract award]</i> <i>The Project Authority (PA) is the representative of the department or agency for whom the Work is being carried out under the Contract including the provision to approve the authority to proceed for delivery and installation and is responsible for all matters concerning the technical content of the Work under the Contract.</i> <i>In addition, the PA is also responsible for ensuring that the Supplier's employees and subcontractors requiring access to the site adhere to the allocated time for the Supplier to access the site to deliver and install the furniture in accordance with the master schedule held by the General Contractor (a representative of Canada or a service provider(s) under contract with the Government of Canada).</i>		
	Name:		
	Title:		
	Department/Agency/Crown Corporation:		
	Address:		
	Telephone No.:		
	E-mail address:		
4.3	Contractor's Representative		
	As set out in Annex A, Table 9 below.		
5.	Method of Payment		
	The checked box applies. If the Contractor's SA indicates acceptance for payment by credit card, that method may be used in conjunction with the following.		
	<input type="checkbox"/>	Single Payment	
	<input checked="" type="checkbox"/>	Multiple Payment	
6.	Invoicing <i>(optional)</i>		
	Further to the Invoicing terms of the WTCM document, the Contractor will deliver the original and one copy of the invoice to the following address for certification and payment:		
	Name of the organization and contact: <i>[To be completed at contract award]</i>		
	Address:		

ANNEX A
REQUIREMENT and BASIS OF PAYMENT

1. Category Selection

Combined Categories Rule:

For reasons of compatibility, the following categories will be combined for evaluation and contract award purposes: The rule only applies to the categories below that are checked. The unchecked categories will be evaluated separately and may be awarded to multiple suppliers;

☐ **Category 1**

☐ **Category 2**

☐ **Category 5**

*** Exception: when using the Cat 1, 2, 5 combined categories rule, IU's may calculate the percentage of NSA product allowed (as defined in their solicitation document) against the total quantity of the combined categories.**

Design Upgrade Rule:

The IU may exercise an option to upgrade products up to 20% of each Category product total before Applicable Taxes after contract award.

The Design Upgrade amount is used at the discretion of the Project Authority (PA) **prior to the manufacturing/ordering of the products**, the PA will provide the Contractor with a written notice of Canada's Design Upgrade choices for each of the product(s) to be upgraded. The Contractor will provide the pricing of the upgraded product(s) to a maximum of 20% of each Category Contract Price of Table 8. The Contracting Authority will issue an amendment to the contract with the Design Upgrades and pricing.

The Supplier certifies that all the Design Upgraded products offered will conform to all specifications and meet the testing requirements detailed in the Specifications of the Supply Arrangement.

Design Upgrade: is the process of replacing a product with a more innovative or enhanced version of the same product.

NSA:

NSA products can be incorporated in the RFB and must not exceed 30% of the firm quantity by category. NSA items must be added to the category that is most closely related and must be generic.

The requirement includes the following category of work:

a. Category 1 – Interconnecting Panels and Freestanding Systems

☐ Category 1a – Interconnecting Panels (Refer to Annex C)

☐ Category 1b – Supporting components and freestanding furniture

RULE: Metal Storage

Identified Users may procure metal storage products forming part of Category 1 when the metal storage products will be part of a requirement for a workstation(s)/work point(s). If this rule does not apply, Category 3 must be used for the metal storage products forming part of this category.

b. ☐ Category 2 – Freestanding Height Adjustable Desk / Table Products

c. ☐ Category 3 – Metal Filing and Storage Cabinets

Identifying the maximum height of the Personal Storage Towers, Wardrobes and Storage Cabinets is acceptable as per 6B. 4.1 of the SA (table 1 Additional product details)

d. ☐ Category 4 – Wood Veneer – Freestanding Products

e. ☐ Category 5 – Ancillary and Lighting Products

f. ☒ Category 6 - Support Space – Collaborative Furniture

RULE: Category 6 can be further subdivided by space or like product in order to increase or allow competition. Space is defined as a location available for a particular purpose such as a meeting room space or a collaborative space. Like products are defined as products with similar design and construction. If NSA products form part of the requirement, the IU must validate the 30% NSA prior to subdividing the category. NSA products can be added to any subdivide or in its own subdivide.

Category 6 has been subdivided in the following Categories: Category 6A and Category 6F.

g. ☒ NSA Products – Categories: 6A and 6F

2. Product and Pricing Tables

Site Inspection Date: To be coordinated with Project Authority after contract award. (Refer to Annex A article 4 of the SA for Site Inspection and Documentation instructions.)

INSTRUCTIONS TO BIDDERS: Bidders are to complete Sections B of the tables identified by the IU in this article as well as Tables 8 and 9. **Bidders must provide a complete product offering for each category, or CAT 6 sub-divide they wish to submit a bid in order to be compliant.**

****Refer to article 6A.7 for instructions on how to submit products that are not approved in product listing.****

In a resulting contract, the term “Bid” means the Supplier’s commitment, the term “Bidder” means “Contractor”.

Category 6A

Table 1 – Product Table

Section A - IU REQUIREMENT				Section B – SUPPLIER'S BID			
#	GoCUID	Description of Product (Additional product details may be inserted, if required as per 6B.4.1 of the SA)	QTY	** Provide additional Information Yes/No	Supplier Part Number	Firm Unit Price \$	Extended Total [Qty x Price] \$
1	6SLCOAXXFUXXXXMXXX OR 6SLCOAXXWUXXXXMXXX	Width range must be from 21" (533mm) – 24" (610mm) Back fabric must be different from the seat fabric. Upholstery fabric must meet and pass the ACT Abrasion test for Heavy Duty Upholstery: ASTM D4157-02 / 30,000 double rubs wyzenbeek method. Fixed base must have 4 legs or wire base Swivel base must have a pedestal base with an auto-return mechanism that pivots on the pedestal's axis. <u>Tag: A1</u>	18	Yes		\$	\$
2	6SSOTWXXLUW4XXXQNNY	Back fabric must be different from the seat fabric. Upholstery fabric must meet and pass the ACT Abrasion test for Heavy Duty Upholstery: ASTM D4157-02 / 30,000 double rubs wyzenbeek method. Tag A2 and A3 must be from the same manufacturer and must have the same finishes. <u>Tag: A2</u>	4	No		\$	\$
3	6SLCWAXXFUXXXXMXXX	Width range must be from 27" (686mm) – 34" (863mm) Back fabric must be different from the seat fabric. Upholstery fabric must meet and pass the ACT Abrasion test for Heavy Duty Upholstery: ASTM D4157-02 / 30,000 double rubs wyzenbeek method. Fixed base must have 4 legs	3	No		\$	\$

		or wire base. Tag A2 and A3 must be from the same manufacturer and must have the same finishes. Tag: A3					
4	6STCWRXXLUXXXXXNNX	Tablet arm chair must come with shelf below. Providing a cup holder is optional. Tablet surface range must be from 12" (305mm) – 18" (457mm) Must have four lockable casters for carpet application Tag: A4	6	No			
5	6STCWLXXLUXXXXXNNX	Tablet arm chair must come with shelf below. Providing a cup holder is optional. Tablet surface range must be from 12" (305mm) – 18" (457mm) Must have four lockable casters for carpet application Tag: A5	6	No			
6	6SLCWAXXWUXXXXXMXX	Width range must be from 27" (686mm) – 36" (914mm) Back fabric must be different from the seat fabric. Upholstery fabric must meet and pass the ACT Abrasion test for Heavy Duty Upholstery: ASTM D4157-02 / 30,000 double rubs wyzenbeek method. Must have a pedestal swivel base with an auto-return mechanism that pivots on the pedestal's axis. Tag: A6	3	No			
7	6CKIVAREWL48L96TYXX OR 6CKIVAREGL48L96TYXX	Must have 2 duplex outlets, 4 data outlets and 2 USB ports per table. Tag: A10	2	Yes			
8	6SSOTHXXLUW6XXXQNNY	Back fabric must be different from the seat fabric. Upholstery fabric must meet	4	Yes			

		and pass the ACT Abrasion test for Heavy Duty Upholstery: ASTM D4157-02 / 30,000 double rubs wyzenbeek method.				
		Tag: A11				
9	6SUCSQXLUX8XXXLXXX	Seat width must be 18" (457mm) – 20" (508mm) Must have casters for carpet application	4	Yes		
		Tag: A12				
10	6KBSCHxxSY15XXXPOYX OR 6KBSCHxxLY15XXXPOYX	Upholstery must be available in both vinyl and fabric. Upholstery fabric must meet and pass the ACT Abrasion test for Heavy Duty Upholstery: ASTM D4157-02 / 30,000 double rubs wyzenbeek method. Four stools must fit within the table length of Tag A10. Refer to Plan – area 549.	16	Yes		
		Tag: A15				

****Provide additional information:**

Canada is requesting bidders: to provide drawings and/or pictures for these products including descriptive literature and dimensions as per Table 1 – Product Table **with your bid submission.**

NSA products (must not exceed 30% of the firm quantity by category)

The Supplier signs, and certifies that all the NSA products offered will conform to all specifications and meet the testing requirements detailed at Annex D.

Section A - IU REQUIREMENT			Section B – SUPPLIER'S BID			
#	NON-SA Product(s)	QTY	** Provide additional Information Yes/No	Supplier Part Number	Firm Unit Price \$	Extended Total [Qty x Price] \$
11	Description : Lounge chair with high back and sides. - Back and sides to create a C or U shape configuration so as to provide privacy on back and both sides. - Back and seat cushions must be fixed. - Must have a modern tailored finish. - No arm rest Dimensions : - Width : must be between 1069mm (42in.) to 1321mm (52in.) - Inside seat depth must be no less than 483mm (19in.) - Overall height of high back and sides must be a minimum of 1069mm (42in.) - Seat height must be between 406mm (16in.) and 508mm (20in.) Finishes : - Seat and back must be fully upholstered. - Back fabric must be different from the seat fabric.	3	Yes		\$	\$

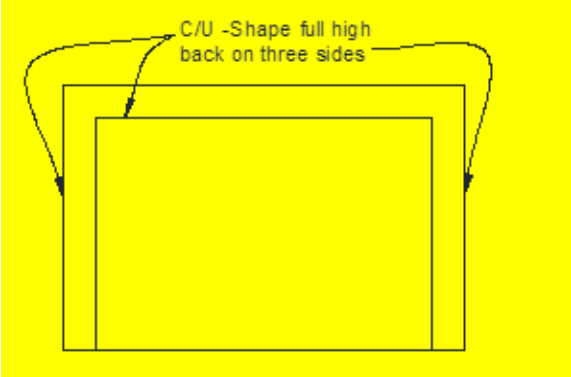
<p>-High back must be upholstered in fabric. -Upholstery fabric must meet and pass the ACT Abrasion test for Heavy Duty Upholstery: ASTM D4157-02 / 30,000 double rubs wyzenbeek method -Base finish must be painted metal</p> <p>Base/Supports : -Base legs must be available with legs, or wire base.</p>  <p>Tag: A13</p>					
		Product Total	\$		

Table 2 - Delivery

Section A - IU REQUIREMENT				Section B – SUPPLIER'S BID	
Product Item # from Table 1	Location	Desired Date** (Y/M/D)	Desired Time:	Supplier will supply and deliver as per below**	Firm Lot Price \$
All	25 Fitzgerald Road 5 th Floor Nepean, ON K2H 1E6	On or before 2021-09-17	Normal Business Hours	____ : weeks <i>Standard Lead time is between 6-10 weeks for furniture delivery and installation.</i>	\$
<p>*Normal Business Hours 8:00 – 17:00, as per SA, Annex A, article 5</p> <p>**The Project Authority (PA) will provide the supplier the authority to proceed prior to the finalized delivery date taking into consideration the delivery time provided by the supplier. Canada will not be responsible if the supplier chooses to proceed without the PA authorization.</p>				Delivery Total:	\$

Table 3 – Installation

Section A - IU REQUIREMENT	Section B – SUPPLIER'S BID
----------------------------	----------------------------

Product Item # from Table 1	Location	Desired Date** (Y/M/D)	Desired Time:	Supplier will install as per below**	Firm Lot Price \$
All	25 Fitzgerald Road 5 th Floor Nepean, ON K2H 1E6	On or before 2021-09-17	Normal Business Hours	_____ : weeks from date of supply and delivery <i>Standard Lead time is between 6-10 weeks for furniture delivery and installation.</i>	\$
<p>*Normal Business Hours 8:00 – 17:00, as per SA, Annex A, article 5</p> <p>**The Project Authority (PA) will provide the supplier the authority to proceed prior to the finalized installation date taking into consideration the installation time provided by the supplier. Canada will not be responsible if the supplier chooses to proceed without the PA authorization.</p> <p>Installation drawings are to be provided within one month prior to install for review and approval. **</p> <p>**If furniture plans and CAD files have not been provided to supplier, supplier is required to request plans from the Project Authority one month prior to install.**</p> <p>** Furniture supplier is required to install all furniture in the appropriate rooms according to the plans unless otherwise indicated**</p>				Installation Total:	\$

Table 4 – Optional Product

☒ Not Applicable

Table 5 – Optional Delivery

☒ Not Applicable

Table 6 – Optional Installation

☒ Not Applicable

Table 7 – Standard Finishes and Canada's Facilities to Accommodate the Delivery and Certifications

1.	Standard Finishes	
1.1	<p>IU is to consult the Supplier's Website identified in Part 6A of the SA to view the available finishes.</p> <p>Within ten business days of the contract award, the Project Authority will provide the Contractor with a written notice of Canada's finish choices for each of the product(s) in Annex A.</p> <p>The Contractor will deliver the products corresponding to Canada's choice of specific finishes(s). No additional charge will be applied to Canada.</p>	
2.	<p>Canada's Facilities to Accommodate the Delivery</p> <p><i>The Supplier's employees and subcontractors requiring access to the site must adhere to the health and safety plans established for the site, in addition to any laws in effect in the jurisdiction where the work is being performed.</i></p> <p><i>During the period of the contract, a representative of Canada or a service provider(s) under contract with the Government of Canada may request the list of employees and subcontractors requiring access to the site to perform the work and their security statuses. Information must be provided in the timeframe prescribed in order to ensure that the supply, delivery and installation of the furniture aligns with the master schedule.</i></p>	
2.1	Loading Dock/Location	
A	Location	25 Fitzgerald
B	Dock	Yes, refer to plan
C	Lift	Weight Capacity: 30,000 lbs.
D	Door	Size: 6'-3" x 9'-0"
E	Freight Elevator	<p>No freight elevator</p> <p>Material padding available for the elevator. Installer are liable if any damage is done.</p> <p>Size: 4'-0" Wide Doors</p> <p>Inside width 7'-0"</p> <p>Height 9'-6"</p>
F	Other (specify, if	Refer to plan at ANNEX E - Loading Dock/Location

Solicitation No. - N° de l'invitation
EP916-212289/B

Amd. No. - N° de la modif.
001

Buyer ID - Id de l'acheteur
pq991

	any)	Client requires 5 days notice prior to any delivery. An escort is required during delivery and install. Loading area can accommodate up to a 53'-0" truck
3.	Continuance of Certifications	
	The Bidder certifies that by submitting a bid in response to the RFB, the Bidder, and any of the Bidder's members if the Bidder is a Joint Venture, continues to comply with all of the following certifications listed in Parts 6A and 6B of the Bidder's SA for Work Spaces. Canada may request copies of environmental certification(s) prior to contract award within a time period specified by the Identified User.	
3.1	Integrity Provisions	
3.2	Federal Contractor's Program for Employment Equity	
3.4	Product Conformance	
3.5	Price Certification (In accordance with the SA, Part 6B)	

Table 8 - Bid Evaluation and Contract Total (Canada may complete if not completed by the Bidder)

1	Firm Product Total (Table 1)	\$
2	Firm Delivery Total (Table 2)	\$
3	Firm Installation Total (Table 3)	\$
4	Optional Product Total (Table 4)	N/A
5	Optional Delivery Total (Table 5)	N/A
6	Optional Installation Total (Table 6)	N/A
7	Hardware Total as per article 1.5 of Annex A-1 of SA	\$
8	Total Evaluated (Bid) Price* (1 + 2 + 3 + 4 + 5 + 6+ 7) [to be removed at contract award]	\$
9	Contract Price(1+2+3+7): [applicable at contract award only]	\$
10	Applicable Tax(es): [applicable at contract award only]	\$
11	Total Estimated Cost (9+10): [applicable at contract award only]	\$

* Applicable taxes extra.

Table 9 – Bidder's Authorized Representative

1.	Bidder's Authorized Representative for the Bid and the Contract		
	Name:	Telephone:	
		E-Mail:	
		PBN:	
		SA #: E60PQ-140003/___/PQ	

Category 6F

Table 1 – Product Table

Section A - IU REQUIREMENT				Section B – SUPPLIER’S BID			
#	GoCUID	Description of Product <i>(Additional product details may be inserted, if required as per 6B.4.1 of the SA)</i>	QTY	** Provide additional Information Yes/No	Supplier Part Number	Firm Unit Price \$	Extended Total [Qty x Price] \$
1	6CCTVAROLL30XXXJNXX	Tag: F1	1	No		\$	\$
2	6KBSBHxxSY15XXXROYX OR 6KBSBHxxLY15XXXROYX	Upholstery must be available in both vinyl and fabric. Upholstery fabric must meet and pass the ACT Abrasion test for Heavy Duty Upholstery: ASTM D4157-02 / 30,000 double rubs wyzenbeek method. Tag: F2	6	Yes		\$	\$
**Provide additional information: Canada is requesting bidders to provide drawings and/or pictures for these products including descriptive literature and dimensions as per Table 1 – Product Table with your bid submission.							
NSA products <i>(must not exceed 30% of the firm quantity by category)</i> The Supplier signs, and certifies that all the NSA products offered will conform to all specifications and meet the testing requirements detailed at Annex D.							
Section A - IU REQUIREMENT				Section B – SUPPLIER’S BID			
#	NON-SA Product(s)	QTY	** Provide additional Information Yes/No	Supplier Part Number	Firm Unit Price \$	Extended Total [Qty x Price] \$	
3	Description : <ul style="list-style-type: none">- Curvilinear modular benching with backrest in an inside bend configuration, with a bar height ledge attached at the back. Refer to sketch below.- Product provided must be similar to the round footprint. Refer to plan attached.- Must be individual units that gang together.- Ledge must run parallel along the back edge of the bench.- Must be adjacent to each other and can be ganged. Dimensions : <ul style="list-style-type: none">- Overall width must fit within the clearance of 4266mm (166 in.)- Bar height ledge must be secured to the back of seat between 1041mm (41in.) - 1092mm (43 in)- Seat height must be must be between 406mm (16in.) – 508mm (20in.)- Inside seat depth must not be less than 457.2mm (18in.)- Back height of bench must not exceed more than 152mm (6”) above the installed bar height ledge- Bar height table must be between 254mm (10in.) and 456mm (18in). Finishes:	1	Yes		\$	\$	

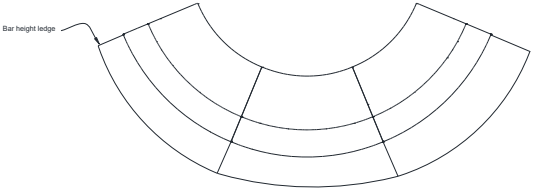
<ul style="list-style-type: none"> - Seat and back must be fully upholstered. - Back fabric must be different from the seat fabric. - Bar height ledge must be high pressure laminate. - Finish must be painted metal <p>Base/Supports :</p> <ul style="list-style-type: none"> - Base legs must have 4 legs  <p>Tag : F3</p>					
				Product Total	\$

Table 2 - Delivery

Section A - IU REQUIREMENT				Section B – SUPPLIER'S BID	
Product Item # from Table 1	Location	Desired Date** (Y/M/D)	Desired Time:	Supplier will supply and deliver as per below**	Firm Lot Price \$
All	25 Fitzgerald Road 5 th Floor Nepean, ON K2H 1E6	On or before 2021-09-17	Normal Business Hours	____ : weeks <i>Standard Lead time is between 6-10 weeks for furniture delivery and installation.</i>	\$
<p>*Normal Business Hours 8:00 – 17:00, as per SA, Annex A, article 5</p> <p>**The Project Authority (PA) will provide the supplier the authority to proceed prior to the finalized delivery date taking into consideration the delivery time provided by the supplier. Canada will not be responsible if the supplier chooses to proceed without the PA authorization.</p>				Delivery Total:	\$

Table 3 – Installation

Section A - IU REQUIREMENT				Section B – SUPPLIER'S BID	
Product Item # from Table 1	Location	Desired Date** (Y/M/D)	Desired Time:	Supplier will install as per below**	Firm Lot Price \$
All	25 Fitzgerald Road 5 th Floor Nepean, ON K2H 1E6	On or before 2021-09-17	Normal Business Hours	____ : weeks from date of supply and delivery <i>Standard Lead time is between 6-10 weeks for furniture delivery and installation.</i>	\$

<p>*Normal Business Hours 8:00 – 17:00, as per SA, Annex A, article 5</p> <p>**The Project Authority (PA) will provide the supplier the authority to proceed prior to the finalized installation date taking into consideration the installation time provided by the supplier. Canada will not be responsible if the supplier chooses to proceed without the PA authorization.</p> <p>Installation drawings are to be provided within one month prior to install for review and approval. **</p> <p>**If furniture plans and CAD files have not been provided to supplier, supplier is required to request plans from the Project Authority one month prior to install.**</p> <p>** Furniture supplier is required to install all furniture in the appropriate rooms according to the plans unless otherwise indicated**</p>	Installation Total:	\$
---	---------------------	----

Table 4 – Optional Product ☒ Not Applicable
Table 5 – Optional Delivery ☒ Not Applicable
Table 6 – Optional Installation ☒ Not Applicable

Table 7 – Standard Finishes and Canada's Facilities to Accommodate the Delivery and Certifications

1.	Standard Finishes	
1.1	<p>IU is to consult the Supplier's Website identified in Part 6A of the SA to view the available finishes.</p> <p>Within ten business days of the contract award, the Project Authority will provide the Contractor with a written notice of Canada's finish choices for each of the product(s) in Annex A.</p> <p>The Contractor will deliver the products corresponding to Canada's choice of specific finishes(s). No additional charge will be applied to Canada.</p>	
2.	<p>Canada's Facilities to Accommodate the Delivery</p> <p><i>The Supplier's employees and subcontractors requiring access to the site must adhere to the health and safety plans established for the site, in addition to any laws in effect in the jurisdiction where the work is being performed.</i></p> <p><i>During the period of the contract, a representative of Canada or a service provider(s) under contract with the Government of Canada may request the list of employees and subcontractors requiring access to the site to perform the work and their security statuses. Information must be provided in the timeframe prescribed in order to ensure that the supply, delivery and installation of the furniture aligns with the master schedule.</i></p>	
2.1	Loading Dock/Location	
A	Location	25 Fitzgerald
B	Dock	Yes, refer to plan
C	Lift	Weight Capacity: 30,000 lbs.
D	Door	Size: 6'-3" x 9'-0"
E	Freight Elevator	<p>No freight elevator</p> <p>Material padding available for the elevator. Installer are liable if any damage is done.</p> <p>Size: 4'-0" Wide Doors</p> <p>Inside width 7'-0"</p> <p>Height 9'-6"</p>
F	Other (specify, if any)	<p>Refer to plan at ANNEX E - Loading Dock/Location</p> <p>Client requires 5 days notice prior to any delivery. An escort is required during delivery and install.</p> <p>Loading area can accommodate up to a 53'-0" truck</p>
3.	Continuance of Certifications	
	<p>The Bidder certifies that by submitting a bid in response to the RFB, the Bidder, and any of the Bidder's members if the Bidder is a Joint Venture, continues to comply with all of the following certifications listed in Parts 6A and 6B of the Bidder's SA for Work Spaces.</p> <p>Canada may request copies of environmental certification(s) prior to contract award within a time period specified by the Identified User.</p>	
3.1	Integrity Provisions	
3.2	Federal Contractor's Program for Employment Equity	
3.4	Product Conformance	

Solicitation No. - N° de l'invitation
EP916-212289/B

Amd. No. - N° de la modif.
001

Buyer ID - Id de l'acheteur
pq991

3.5	Price Certification (In accordance with the SA, Part 6B)
-----	--

Table 8 - Bid Evaluation and Contract Total (Canada may complete if not completed by the Bidder)

1	Firm Product Total (Table 1)	\$
2	Firm Delivery Total (Table 2)	\$
3	Firm Installation Total (Table 3)	\$
4	Optional Product Total (Table 4)	N/A
5	Optional Delivery Total (Table 5)	N/A
6	Optional Installation Total (Table 6)	N/A
7	Hardware Total as per article 1.5 of Annex A-1 of SA	\$
8	Total Evaluated (Bid) Price* (1 + 2 + 3 + 4 + 5 + 6+ 7) [to be removed at contract award]	\$
9	Contract Price(1+2+3+7): [applicable at contract award only]	\$
10	Applicable Tax(es): [applicable at contract award only]	\$
11	Total Estimated Cost (9+10): [applicable at contract award only]	\$

* Applicable taxes extra.

Table 9 – Bidder’s Authorized Representative

1.	Bidder’s Authorized Representative for the Bid and the Contract		
	Name:	Telephone:	
		E-Mail:	
		PBN:	
		SA #: E60PQ-140003/___/PQ	

Solicitation No. - N° de l'invitation
EP916-212289/B

Amd. No. - N° de la modif.
001

Buyer ID - Id de l'acheteur
pq991

ANNEX B
SECURITY REQUIREMENTS

There is no security requirement associated with this contract. Contractor must be escorted at all time.

Solicitation No. - N° de l'invitation
EP916-212289/B

Amd. No. - N° de la modif.
001

Buyer ID - Id de l'acheteur
pq991

ANNEX C
FLOOR PLAN(S)

****** Products shown on floor plan are for information purposes only******

1) Floor Plan(s)

****See attached pdf and/or AutoCAD floor plan****

ANNEX D

Additional Specifications, Certifications

This Annex includes the additional Specifications, Certifications associated with NSA product forming part of the requirement.

1. Specifications

The NSA product for this requirement must be tested and meet the performance Testing Requirements found at ANNEX A-1 and A-2 of the Supply Arrangement.

2. Certifications

.1 NSA Product Conformance

2.1 NSA Product Conformance *(Required precedent to Issuance of a contract)*

The Supplier certifies that all the NSA products offered will conform to all specifications indicated in Annex A and D of the RFB, and meet the testing and performance requirements found at ANNEX A-1 and A-2 of the Supply Arrangement, as applicable.

Supplier's Signature

Date

NSA Product Conformance Certification *(applies after contract award)*

The Supplier warrants that the NSA Product Conformance Certification submitted by the Supplier with its bid is accurate and complete. The Supplier must keep proper records and documentation relating to the NSA product conformance and the testing requirements in this Annex, as applicable. The Supplier must not, without obtaining the prior written consent of the SAA, dispose of any such records or documentation until the expiration of the Contract or the expiry date of the Warranty, whichever is later. All such records and documentation must at all times during the retention period be open to audit, inspection and examination by the representatives of Canada, who may make copies and take extracts.

In addition, the Supplier must provide representatives of the SAA access to all locations where any part of the Work is being performed at any time during working hours. Representatives of the SAA may examine and test the Work as they see fit. The Supplier must provide all assistance and access to facilities, test pieces, samples and documentation that the representatives of the SAA may reasonably require for the carrying out of the inspection, which may also include the submission of test reporting documentation as listed in Annex A and D. The Supplier must forward such test pieces, samples and/or documentation that may also include letters of certification from the laboratories to such person or location as the representatives of the SAA specifies.

ANNEX E
LOADING DOCK/LOCATION



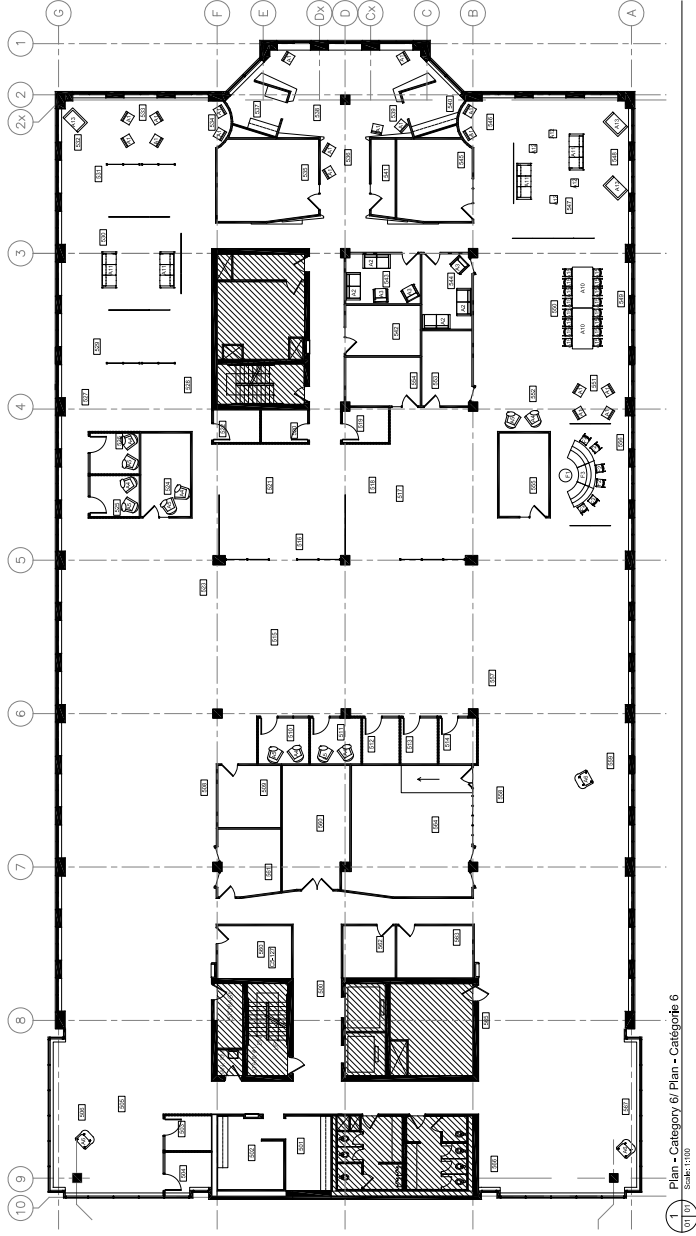
Solicitation No. - N° de sollicitation
EP916-212289/B

Amd. No. - N° de la modif.
001

Buyer ID - Id de l'acheteur
PQ991

All other terms and conditions remain unchanged

A compass rose with a circle divided into four quadrants by a vertical and a horizontal line. The letter 'N' is positioned to the left of the circle, aligned with the top horizontal line. The text 'Project North' is written vertically to the right of the circle, aligned with the top horizontal line.


$$\left(\frac{1}{01 \mid 01} \right)$$

Project
CRA 5th Floor
Reconfiguration/
Reconfiguration du 5e
étage de CRA
25 Fitzgerald Road/ 25 Chemin
Fitzgerald
5th Floor/ 5ème étage

Drawing Title	This is drawing
Category	6 / Catégorie 6
Furniture Plan / Plan de mobilier	
Project Number	Número do projeto
R.12671.001	
Date	Data
2021-05-21	
First Date	Date d'impression
2021-05-21	
Xrefs	Xref's
C:\Bases Buildings\2021\grand.dwg	
File	Fichier
Scale	Echelle
1:100	
Sheet	Feuille

1001