



RETURN BIDS TO:

RETOURNER LES SOUMISSIONS À:

Bid Receiving Public Works and Government
Services Canada/Réception des soumissions Travaux
publics et Services gouvernementaux Canada
800 Burrard Street, Room 219
800, rue Burrard, pièce 219
Vancouver
British Columbia
V6Z 0B9
Bid Fax: (604) 775-9381

SOLICITATION AMENDMENT MODIFICATION DE L'INVITATION

The referenced document is hereby revised; unless otherwise
indicated, all other terms and conditions of the Solicitation
remain the same.

Ce document est par la présente révisé; sauf indication contraire,
les modalités de l'invitation demeurent les mêmes.

Comments - Commentaires

Vendor/Firm Name and Address
Raison sociale et adresse du
fournisseur/de l'entrepreneur

Issuing Office - Bureau de distribution
Public Works and Government Services Canada - Pacific
Region
800 Burrard Street, Room 219
800, rue Burrard, pièce 219
Vancouver
British C
V6Z 0B9

Title - Sujet Bldg M2A CER Cooling Upgrade	
Solicitation No. - N° de l'invitation EZ899-220049/A	Amendment No. - N° modif. 002
Client Reference No. - N° de référence du client	Date 2021-06-25
GETS Reference No. - N° de référence de SEAG PW-\$PWY-036-9004	
File No. - N° de dossier PWY-1-44018 (036)	CCC No./N° CCC - FMS No./N° VME
Solicitation Closes - L'invitation prend fin at - à 02:00 PM Pacific Daylight Saving Time PDT on - le 2021-06-29 Heure Avancée du Pacifique HAP	
F.O.B. - F.A.B. Plant-Usine: <input type="checkbox"/> Destination: <input checked="" type="checkbox"/> Other-Autre: <input type="checkbox"/>	
Address Enquiries to: - Adresser toutes questions à: Martin (PWY), Delia	Buyer Id - Id de l'acheteur pwy036
Telephone No. - N° de téléphone (778) 707-2139 ()	FAX No. - N° de FAX (604) 775-6633
Destination - of Goods, Services, and Construction: Destination - des biens, services et construction: CSC – Bldg M2A, Matsqui Institution – Abbotsford, BC	

Instructions: See Herein

Instructions: Voir aux présentes

Delivery Required - Livraison exigée	Delivery Offered - Livraison proposée
Vendor/Firm Name and Address Raison sociale et adresse du fournisseur/de l'entrepreneur	
Telephone No. - N° de téléphone Facsimile No. - N° de télécopieur	
Name and title of person authorized to sign on behalf of Vendor/Firm (type or print) Nom et titre de la personne autorisée à signer au nom du fournisseur/ de l'entrepreneur (taper ou écrire en caractères d'imprimerie)	
Signature	Date

Solicitation. - N° de l'off. à comm.
EZ899-220049/A

Amd. No. - N° de la modif.
002

Buyer ID - Id de l'acheteur
pwy036

Client Ref. No. - N° de réf. du client

File No. - N° du dossier
PWY-1-44018

CCC No./N° CCC - FMS No/ N° VME

This Amendment #002 is raised to issue an Addendum.

Please see Addendum No. 01 attached.

The addendum will form part of the contract documents.

All other terms and conditions remain unchanged.



ADDENDUM

Project:	Matsqui Inst. Bldg. M2A CER Cooling	Addendum No.:	01
Project No.:	181-06918-06	Date:	2021-June-25
Contract No.:			
Distribution:			

GENERAL

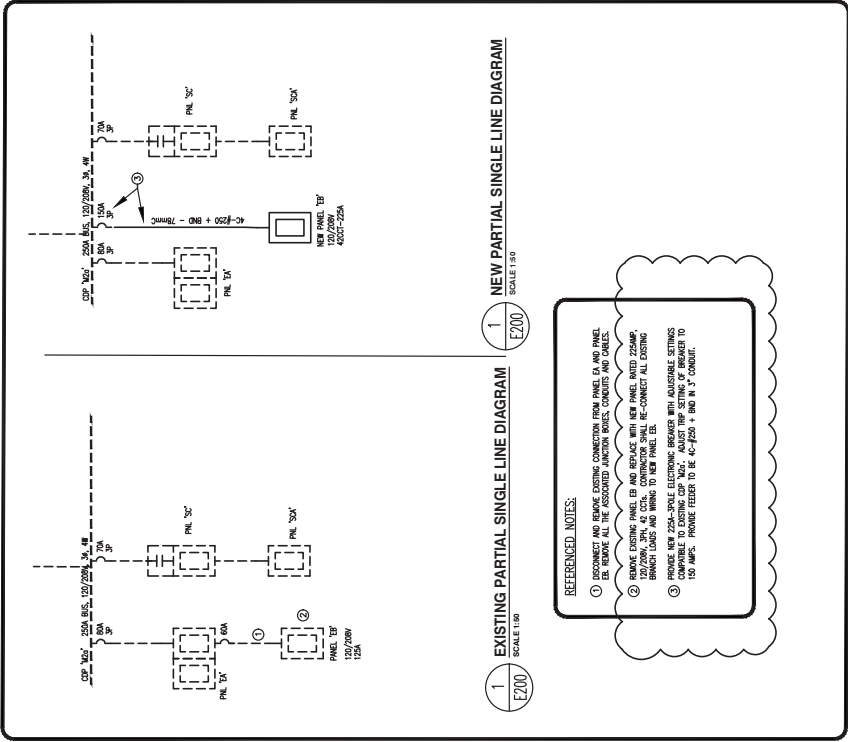
This Addendum forms part of the Contract Documents for PWGSC DNU Bldg M2A CER Cooling and amends the original drawings and Specifications. The following revisions supersede the information contained in the original drawings and Specifications issued to the extent referenced and shall become part thereof.

Electrical Drawings: E200

- Clarification: Contractor to utilize available breaker space in existing CDP 'M2a'. Provide 225A-3pole electronic breaker with adjustable settings compatible to existing CDP. Adjust trip setting of breaker to 150 Amps. Provide feeder to be 4C-#250 KCMIL + bond in 3" conduit.
- Refer to attached clouded drawing for updated information.



End of Addendum



NEW SURFACE MOUNTED PANEL B									
120/208V 3PH 4 W									
MOUNTING SURFACE DESCRIPTION	BRK #	LOAD	PHASE	A	B	C	LOAD #	BRK	DESCRIPTION
CRAC-1	70A	1	6000				6000	2	CRAC 2
	70A	2	6000				6000	3	CRAC 2
	70A	3	6000				6000	4	CRAC 2
H-1	40A	9	4000				1000	8	HEAT TARGE
	40A	10	4000				1000	9	HEAT TARGE
	40A	11	4000				1000	10	HEAT TARGE
SPARE	15A	13					500	1020A	SPARE
SPARE	15A	15					14	15A	SPARE
SPARE	15A	17					16	15A	SPARE
SPARE	15A	19					20	15A	SPARE
SPARE	15A	21					22	15A	SPARE
SPARE	15A	23					24	15A	SPARE
SPARE	15A	25					26	15A	SPARE
SPARE	15A	27					28	15A	SPARE
SPARE	15A	29					30	15A	SPARE
SPARE	15A	31					32	15A	SPARE
SPARE	15A	33					34	15A	SPARE
SPARE	15A	35					36	15A	SPARE
SPARE	15A	37					38	15A	SPARE
SPARE	15A	39					40	15A	SPARE
SPARE	15A	41					42	15A	SPARE
TOTAL LOAD WAIT							31815		
							20815		TOTAL LOAD

MECHANICAL SCHEDULE									
ITEM	DESCRIPTION	LOCATION	UNIT	QTY	PRICE	TOTAL	DATE	BY	REMARKS
1	MECHANICAL SCHEDULE								
2	MECHANICAL SCHEDULE								
3	MECHANICAL SCHEDULE								
4	MECHANICAL SCHEDULE								
5	MECHANICAL SCHEDULE								
6	MECHANICAL SCHEDULE								
7	MECHANICAL SCHEDULE								
8	MECHANICAL SCHEDULE								
9	MECHANICAL SCHEDULE								
10	MECHANICAL SCHEDULE								
11	MECHANICAL SCHEDULE								
12	MECHANICAL SCHEDULE								
13	MECHANICAL SCHEDULE								
14	MECHANICAL SCHEDULE								
15	MECHANICAL SCHEDULE								
16	MECHANICAL SCHEDULE								
17	MECHANICAL SCHEDULE								
18	MECHANICAL SCHEDULE								
19	MECHANICAL SCHEDULE								
20	MECHANICAL SCHEDULE								
21	MECHANICAL SCHEDULE								
22	MECHANICAL SCHEDULE								
23	MECHANICAL SCHEDULE								
24	MECHANICAL SCHEDULE								
25	MECHANICAL SCHEDULE								
26	MECHANICAL SCHEDULE								
27	MECHANICAL SCHEDULE								
28	MECHANICAL SCHEDULE								
29	MECHANICAL SCHEDULE								
30	MECHANICAL SCHEDULE								
31	MECHANICAL SCHEDULE								
32	MECHANICAL SCHEDULE								
33	MECHANICAL SCHEDULE								
34	MECHANICAL SCHEDULE								
35	MECHANICAL SCHEDULE								
36	MECHANICAL SCHEDULE								
37	MECHANICAL SCHEDULE								
38	MECHANICAL SCHEDULE								
39	MECHANICAL SCHEDULE								
40	MECHANICAL SCHEDULE								
41	MECHANICAL SCHEDULE								
42	MECHANICAL SCHEDULE								
43	MECHANICAL SCHEDULE								
44	MECHANICAL SCHEDULE								
45	MECHANICAL SCHEDULE								
46	MECHANICAL SCHEDULE								
47	MECHANICAL SCHEDULE								
48	MECHANICAL SCHEDULE								
49	MECHANICAL SCHEDULE								
50	MECHANICAL SCHEDULE								
51	MECHANICAL SCHEDULE								
52	MECHANICAL SCHEDULE								
53	MECHANICAL SCHEDULE								
54	MECHANICAL SCHEDULE								
55	MECHANICAL SCHEDULE								
56	MECHANICAL SCHEDULE								
57	MECHANICAL SCHEDULE								
58	MECHANICAL SCHEDULE								
59	MECHANICAL SCHEDULE								
60	MECHANICAL SCHEDULE								
61	MECHANICAL SCHEDULE								
62	MECHANICAL SCHEDULE								
63	MECHANICAL SCHEDULE								
64	MECHANICAL SCHEDULE								
65	MECHANICAL SCHEDULE								
66	MECHANICAL SCHEDULE								
67	MECHANICAL SCHEDULE								
68	MECHANICAL SCHEDULE								
69	MECHANICAL SCHEDULE								
70	MECHANICAL SCHEDULE								
71	MECHANICAL SCHEDULE								
72	MECHANICAL SCHEDULE								
73	MECHANICAL SCHEDULE								
74	MECHANICAL SCHEDULE								
75	MECHANICAL SCHEDULE								
76	MECHANICAL SCHEDULE								
77	MECHANICAL SCHEDULE								
78	MECHANICAL SCHEDULE								
79	MECHANICAL SCHEDULE								
80	MECHANICAL SCHEDULE								
81	MECHANICAL SCHEDULE								
82	MECHANICAL SCHEDULE								
83	MECHANICAL SCHEDULE								
84	MECHANICAL SCHEDULE								
85	MECHANICAL SCHEDULE								
86	MECHANICAL SCHEDULE								
87	MECHANICAL SCHEDULE								
88	MECHANICAL SCHEDULE								
89	MECHANICAL SCHEDULE								
90	MECHANICAL SCHEDULE								
91	MECHANICAL SCHEDULE								
92	MECHANICAL SCHEDULE								
93	MECHANICAL SCHEDULE								
94	MECHANICAL SCHEDULE								
95	MECHANICAL SCHEDULE								
96	MECHANICAL SCHEDULE								
97	MECHANICAL SCHEDULE								
98	MECHANICAL SCHEDULE								
99	MECHANICAL SCHEDULE								
100	MECHANICAL SCHEDULE								