

Gestion des déchets du Parc urbain national de la Rouge (PUNR)



= Conteneurs Moloks (recyclage et déchets)

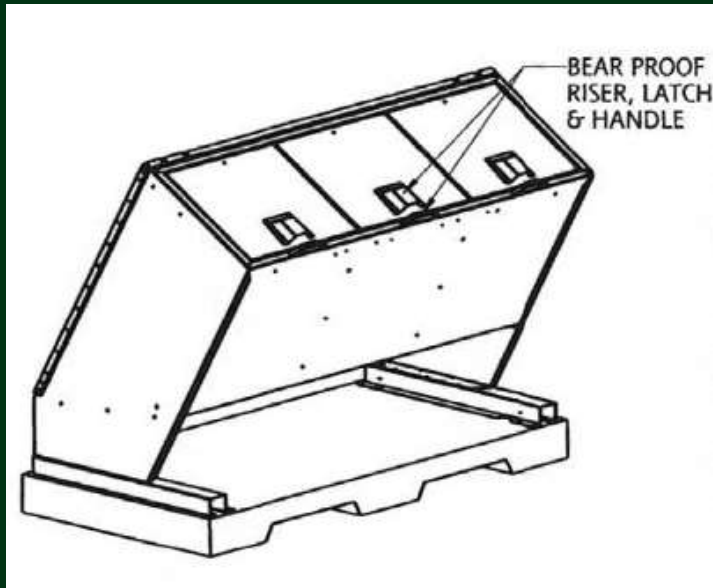


= Conteneurs Haul-All Hide-a-bag (recyclage et déchets)



Conteneurs Hide-A-Bag (HB3S)

- Deux conteneurs à ordures, un conteneur de recyclage
- Bardage en polyester cèdre
- Verrou à l'épreuve de la faune
- Dalle de béton prémontée pour un déplacement facile



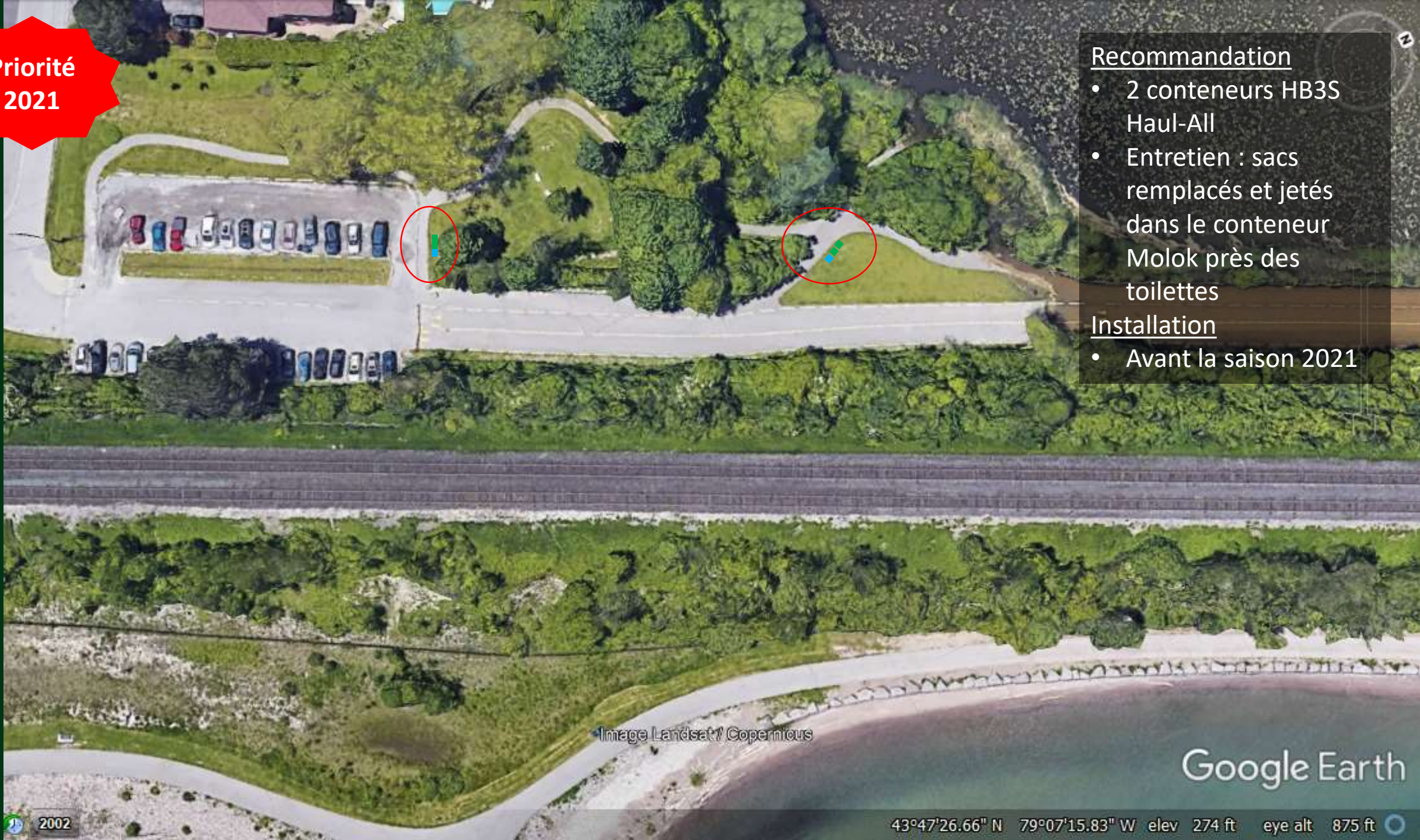
Le bardage en polyester cèdre ou la protection en vinyle décoratifs sont superbes et ne requièrent aucun entretien.

Conteneur Molok (5 000L, 3 000L, 1 300L)



Terrain de la plage supérieure

Priorité 2021



Recommandation

- 2 conteneurs HB3S Haul-All
- Entretien : sacs remplacés et jetés dans le conteneur Molok près des toilettes

Installation

- Avant la saison 2021

Image Landsat / Copernicus

Google Earth

2002

43°47'26.66" N 79°07'15.83" W elev 274 ft eye alt 875 ft

Priorité
2021

Secteur de la plage inférieure

Recommandation

- 5 conteneurs HB35 Haul-All
- 4 conteneurs Molok de 3 000L
- 2 conteneurs Molok de 1 300L

Installation

- Avant la saison 2021



Image Landsat / Copernicus

Google Earth

43°47'36.30" N 79°07'08.09" W elev 274 ft eye alt 1060 ft

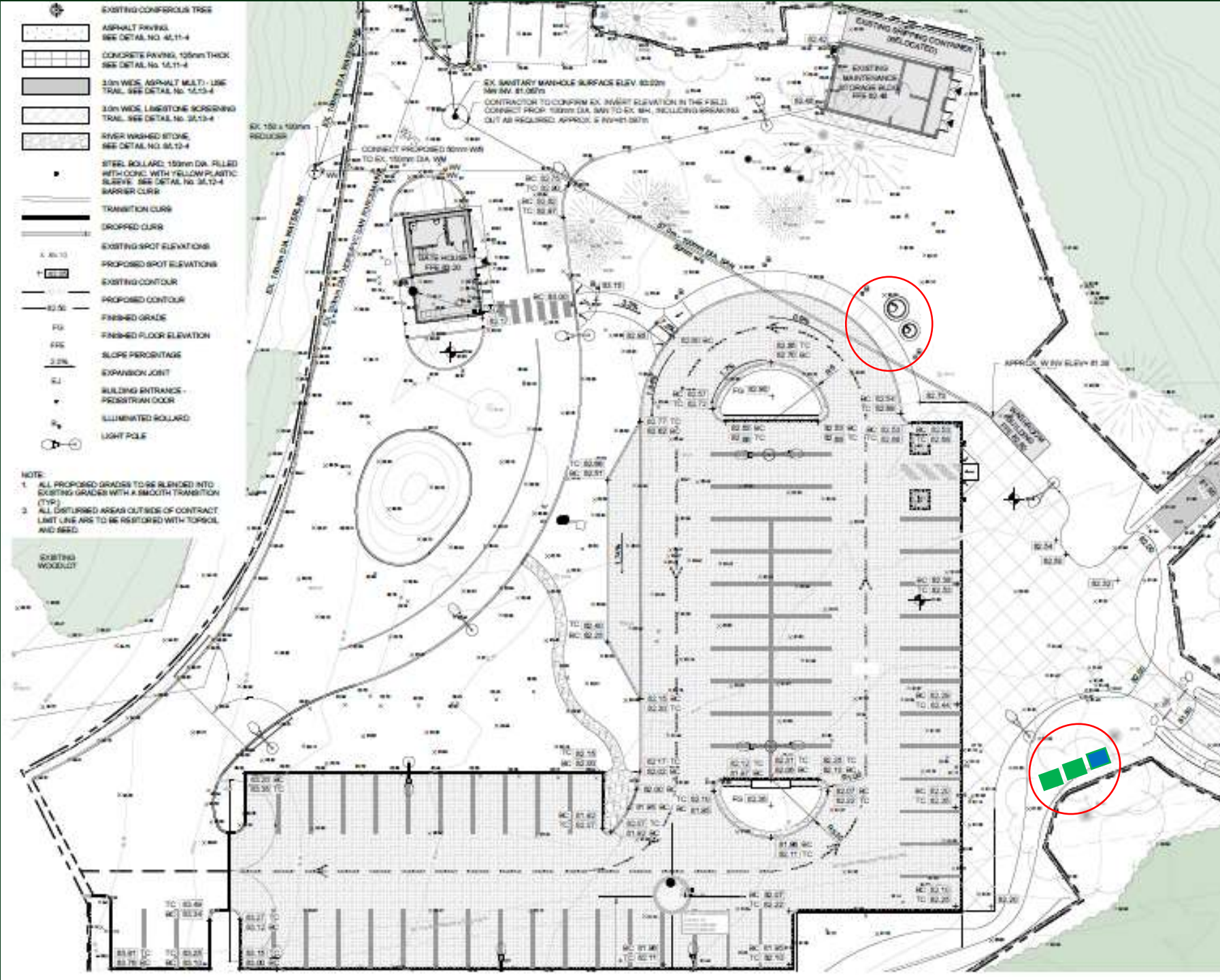
Point de départ du sentier des Mâts

Recommandation

- 2 conteneurs Molok de 3 000L
- 1 conteneur HB3S Haul-All

Installation

- Construction en 2021-2022, prête pour la saison 2022



Camping Glen Rouge



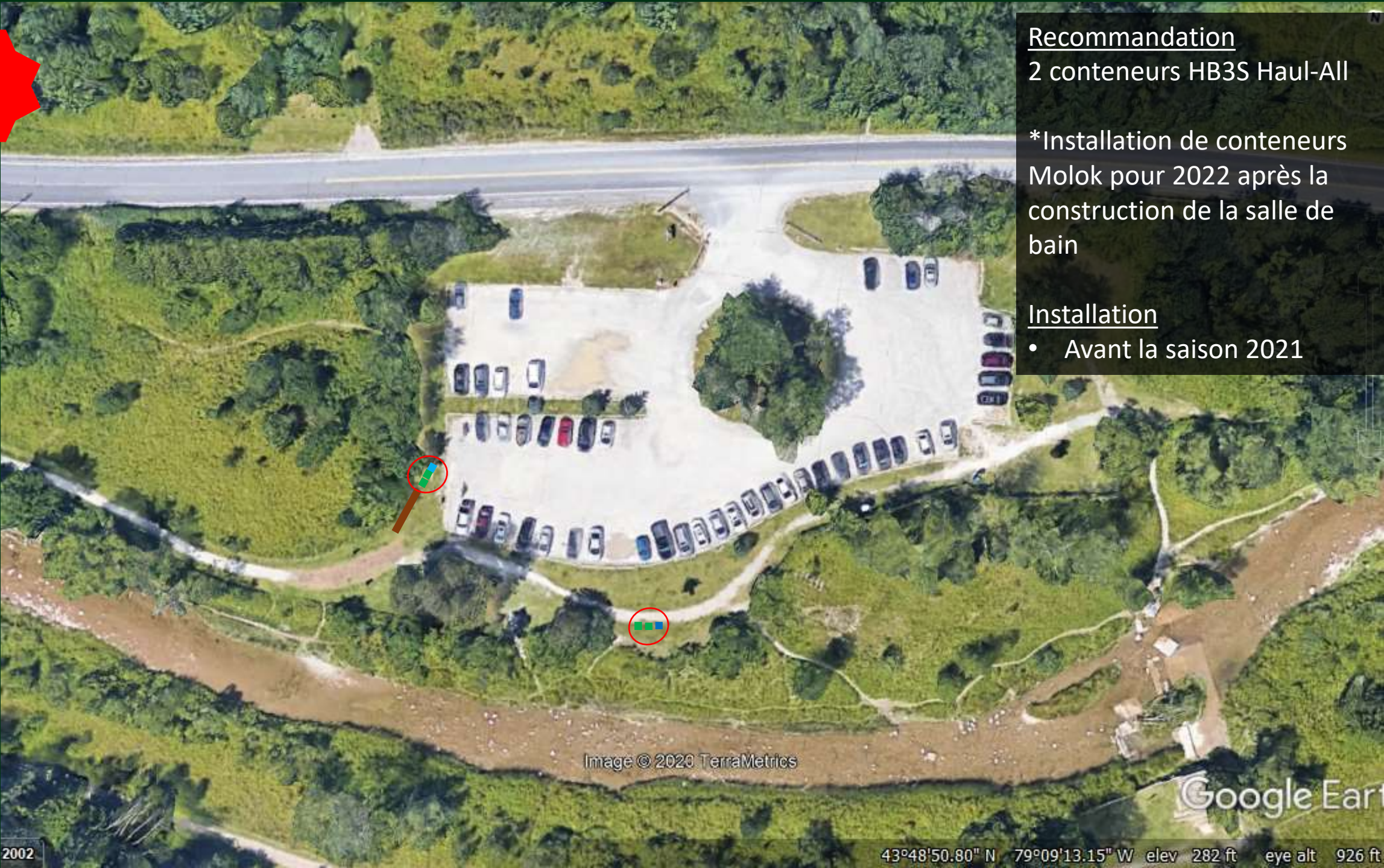
Recommandation

- 1 conteneur HB3S Haul-All
- 1 conteneur HB3S Haul-All
- 2 conteneurs Molok de 5 000L
- 1 conteneur Haul-All pour bouteilles de propane vide

Installation

- Construction en 2021-2022, prête pour la saison 2022

Priorité
2021



Recommandation

2 conteneurs HB3S Haul-All

*Installation de conteneurs Molok pour 2022 après la construction de la salle de bain

Installation

- Avant la saison 2021

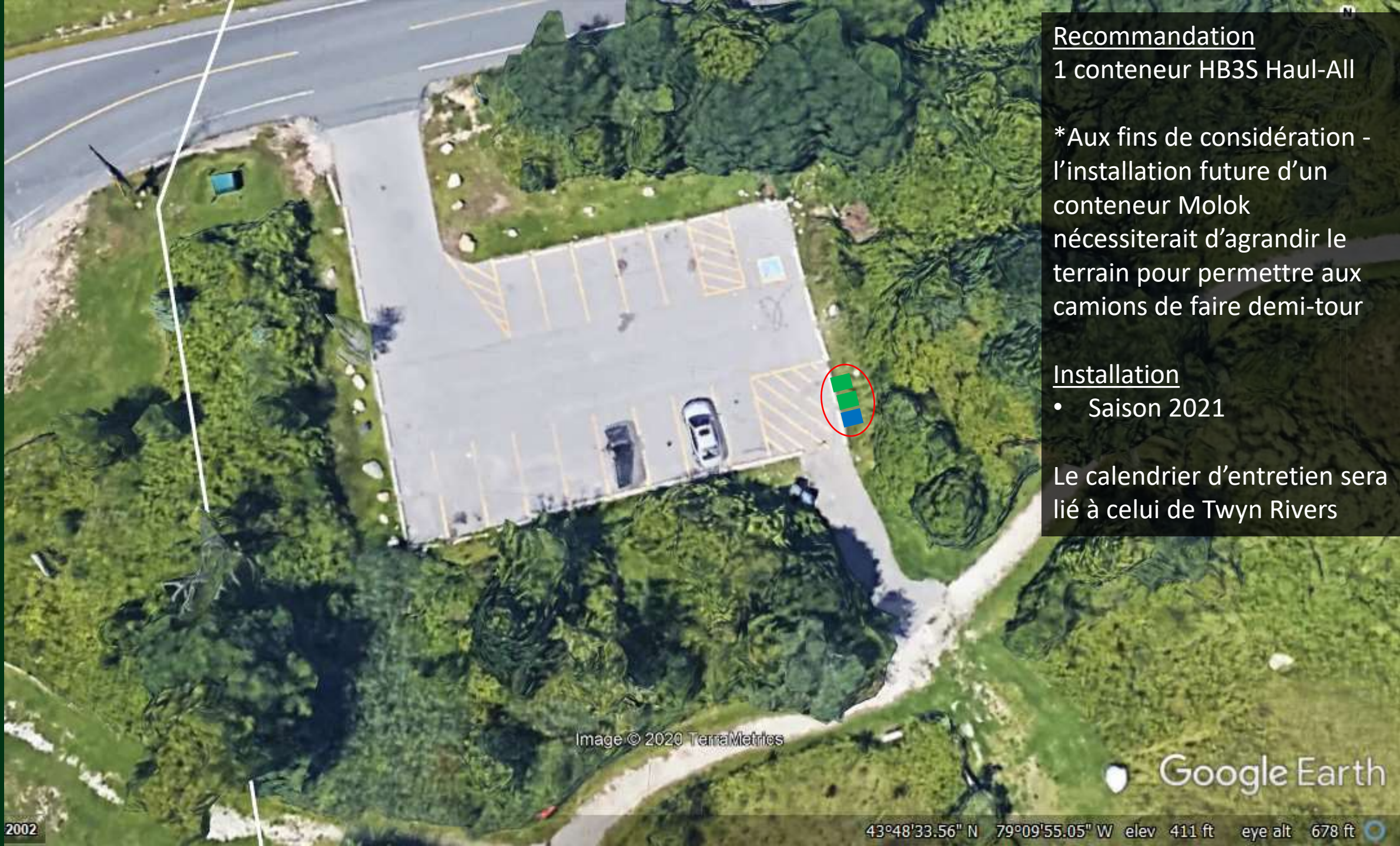
Twyn Rivers

Image © 2020 TerraMetrics

Google Earth

2002

43°48'50.80" N 79°09'13.15" W elev 282 ft eye alt 926 ft



Recommandation

1 conteneur HB3S Haul-All

* Aux fins de considération -
l'installation future d'un
conteneur Molok
nécessiterait d'agrandir le
terrain pour permettre aux
camions de faire demi-tour

Installation

- Saison 2021

Le calendrier d'entretien sera
lié à celui de Twyn Rivers

Image © 2020 TerraMetrics

Google Earth

Priorité
2021

Recommandation

- 3 conteneurs HB3S Haul-All
- 2 conteneurs Molok de 5 000L

Installation

- Avant la saison 2021



Image © 2020 TerraMetrics

Google Earth

2002

43°49'04.32" N 79°10'15.85" W elev 425 ft eye alt 1463 ft

Priorité
2021

Recommandation

- 1 conteneur HB3S Haul-All

Installation

- Avant la saison 2021



Image © 2020 TerraMetrics

Google Earth

Point de départ du sentier des Thuyas



- Recommandation
- 1 conteneur HB3S Haul-All
 - Accroître les efforts pour supprimer le stationnement en bordure de route

2002

Image Landsat / Copernicus

Google Earth

43°49'51.52" N 79°10'50.29" W elev 436 ft eye alt 570 ft



Recommandation

- 2 conteneurs Molok 5 000L

Installation

- Saison 2021?

Finch Meander



Recommendation

- 1 conteneur HB3S Haul-All

Installation

- Lors du transfert du terrain?

Image Landsat / Copernicus

Google Earth

Sentier Woodland



Recommandation

- 1 conteneur HB3S Haul-All
- 4 conteneurs Molok 3 000L

Installation

- Saison 2021?

the 3D viewer

Image Landsat / Copernicus

Google Earth

2002

43°50'50.11" N 79°11'51.14" W elev 492 ft eve alt 1423 ft

Sentier Reesor Way/Cedarena

Recommandation

- 1 conteneur HB3S Haul-All

Installation

- Saison 2021?

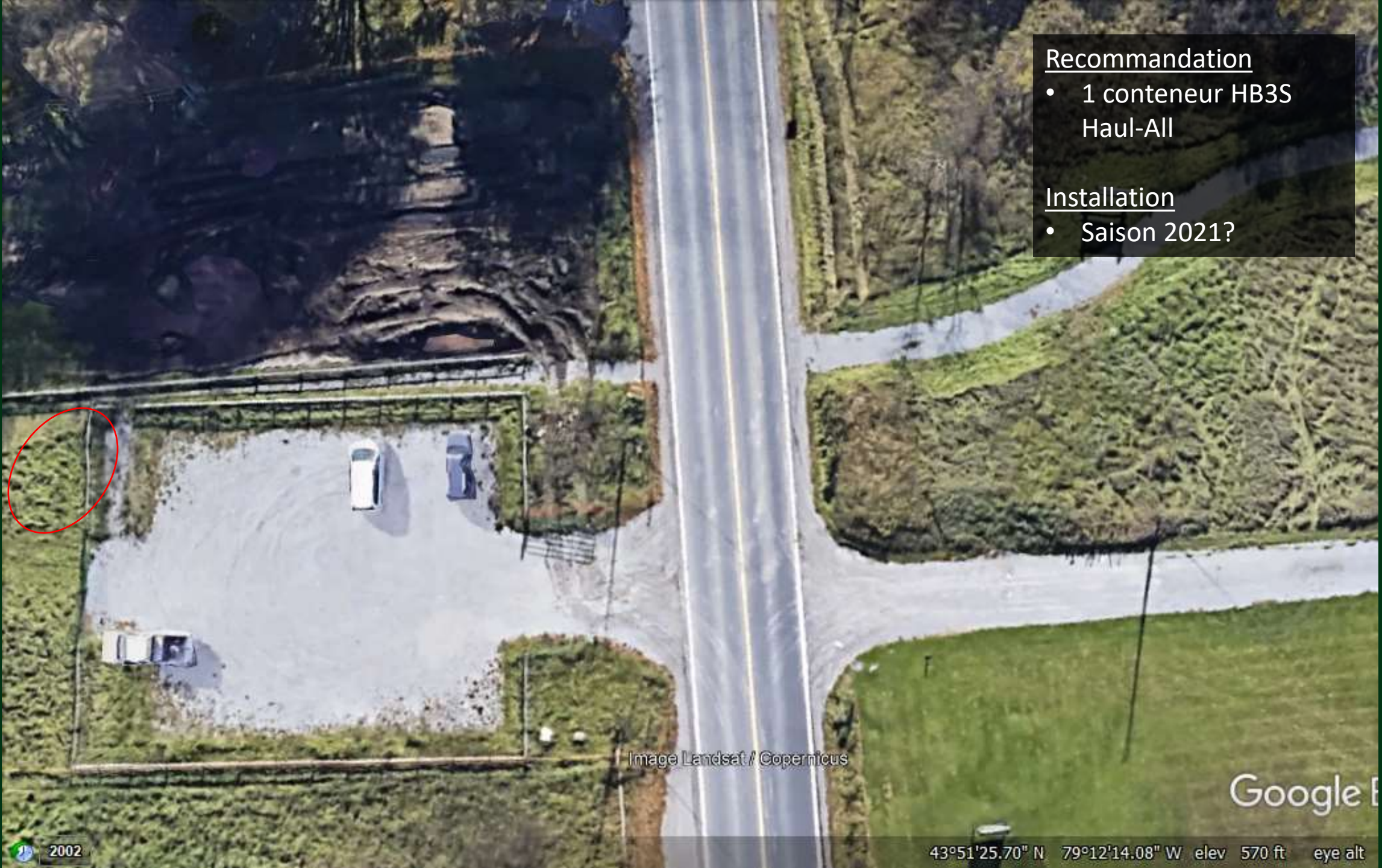


Image Landsat / Copernicus

Google Earth

2002

43°51'25.70" N 79°12'14.08" W elev 570 ft eye alt

14e Avenue/Chemin Reesor

Recommandation

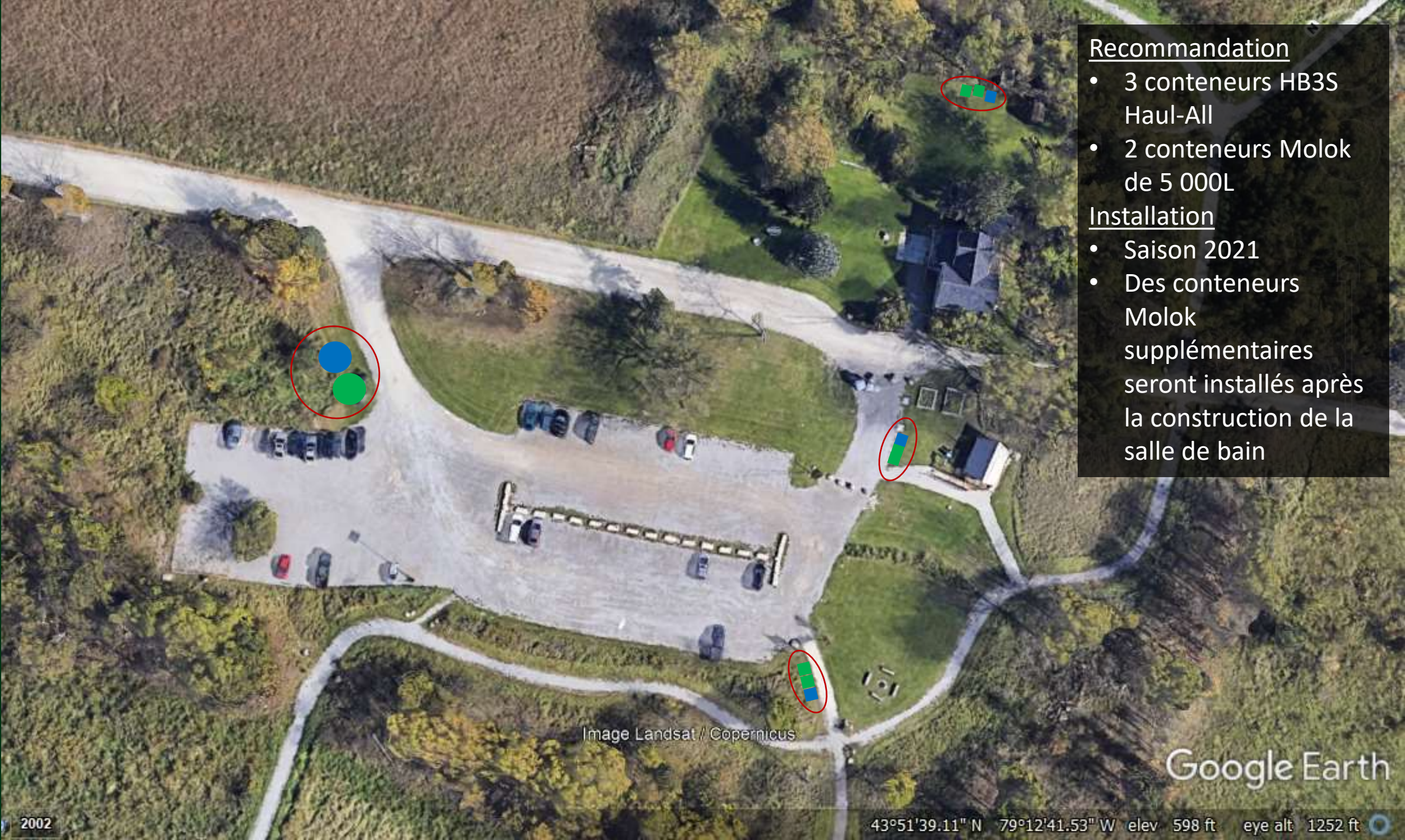
- Pas de poubelle

2002

Image Landsat / Copernicus

Google Earth

43°51'53.79" N 79°12'21.55" W elev 583 ft eye alt 790 ft



Recommandation

- 3 conteneurs HB3S Haul-All
- 2 conteneurs Molok de 5 000L

Installation

- Saison 2021
- Des conteneurs Molok supplémentaires seront installés après la construction de la salle de bain

Image Landsat / Copernicus

Google Earth

Stationnement 14e avenue/Monarch



Recommandation

- 1 conteneur HB3S Haul-All

Installation

- Saison 2021

Image Landsat / Copernicus

Google Earth

2002

43°52'09.52" N 79°11'30.59" W elev 616 ft eye alt 1011 ft

16th AVENUE

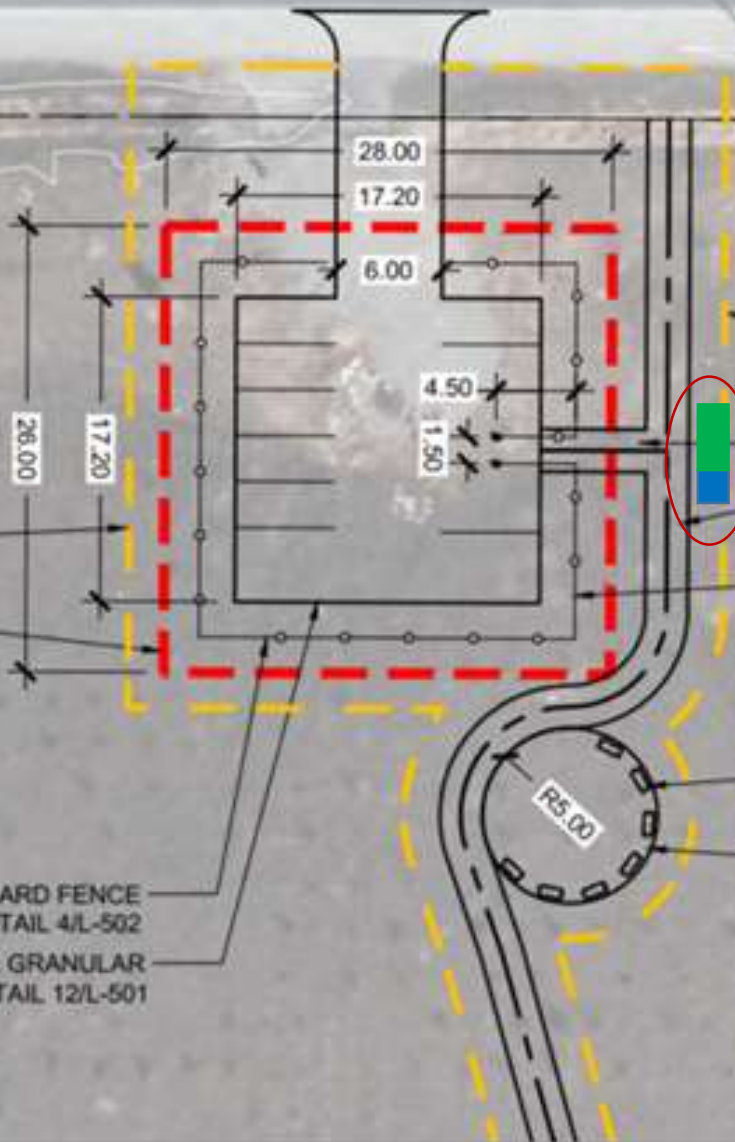
NOTE: STOCKPILED GRANULAR MATERIALS ARE TO BE MOVED FROM STAGING AREA WITHIN 48 HOURS MAXIMUM

SEED TO EDGE OF DISTURBED AREAS

PRIOR TO CONSTRUCTION, AREA TO BE MATERIAL AND EQUIPMENT STAGING AREA AND SHALL BE DELINEATED WITH TEMPORARY 1.2m HIGH 2x2" WOOD POSTS.

PROPOSED POST & BOARD FENCE PER DETAIL 4/L-502

SUPPLY AND INSTALL GRANULAR PARKING LOT PER DETAIL 12/L-501



Recommandation

- 1 conteneur HB3S Haul-All Installation
- À l'ouverture

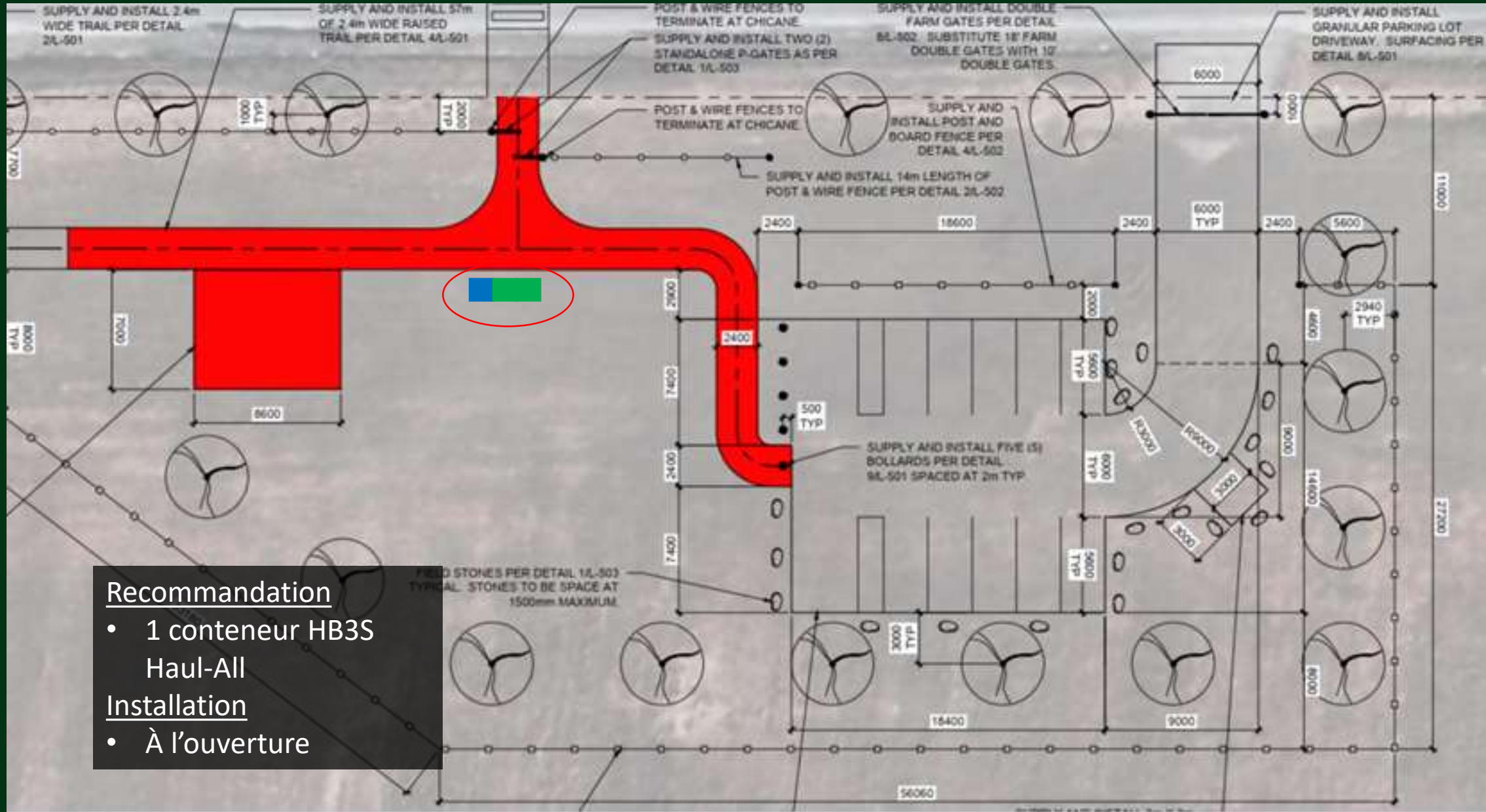
SEED TO EDGE OF DISTURBED AREAS

SUPPLY AND INSTALL 2.4m WIDE TRAIL PER DETAIL 1/L-501

PROPOSED POST & BOARD FENCE PER DETAIL 4/L-502

PROPOSED 7 ARMOUR STONE PER DETAIL 5/L-502. STONES TO HAVE 1.35m GAP MINIMUM

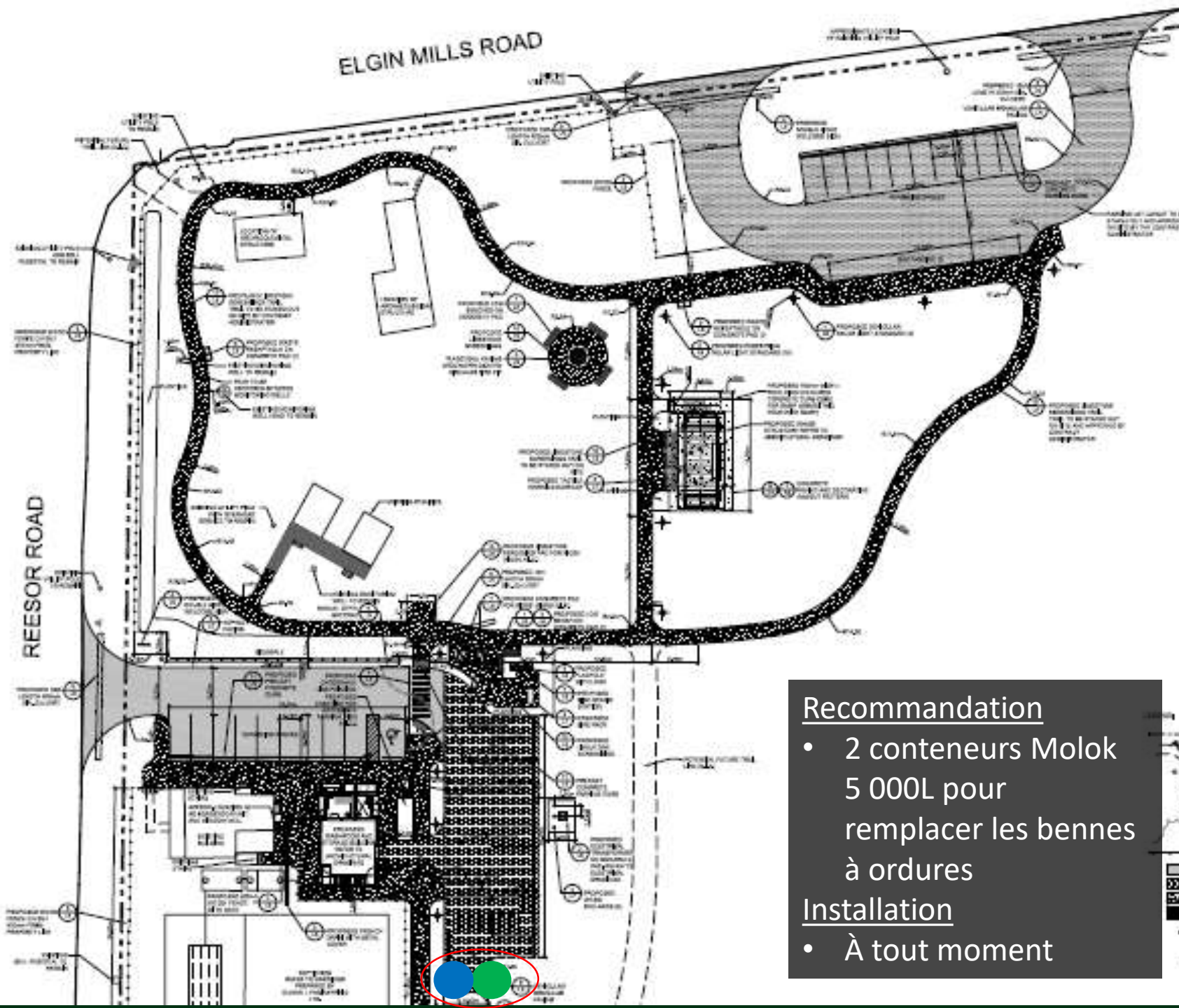
MUSTERING NODE - SURFACING PER DETAIL 1/L-501



Recommandation

- 1 conteneur HB3S Haul-All Installation
- À l'ouverture

Black Walnut



Recommandation

- 2 conteneurs Molok 5 000L pour remplacer les bennes à ordures

Installation

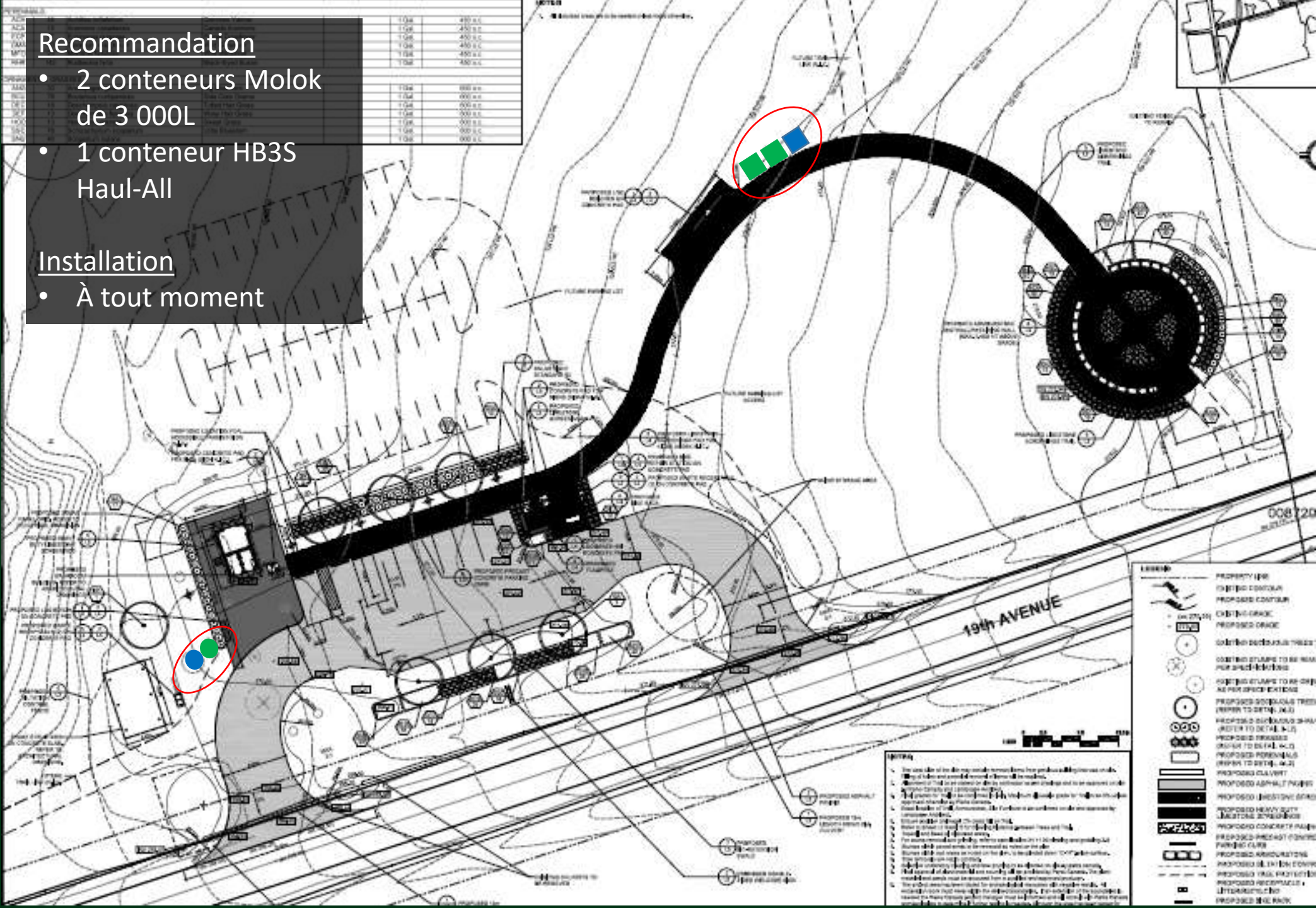
- À tout moment

Recommandation

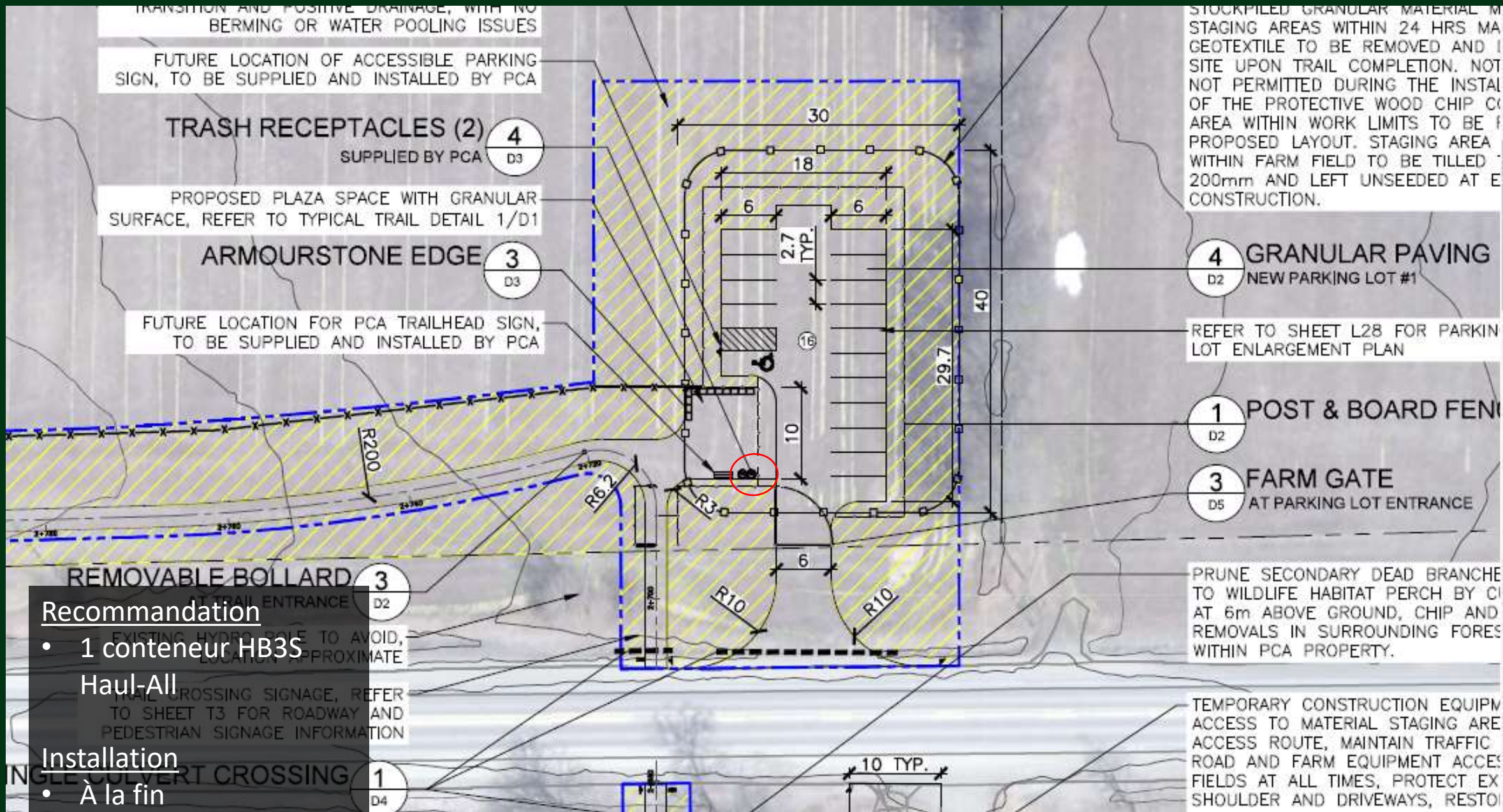
- 2 conteneurs Molok de 3 000L
- 1 conteneur HB3S Haul-All

Installation

- À tout moment



Code	Description	Unit	Quantity
104	400 x 200	m ²	100
105	400 x 200	m ²	100
106	400 x 200	m ²	100
107	400 x 200	m ²	100
108	400 x 200	m ²	100
109	400 x 200	m ²	100
110	400 x 200	m ²	100
111	400 x 200	m ²	100
112	400 x 200	m ²	100
113	400 x 200	m ²	100
114	400 x 200	m ²	100
115	400 x 200	m ²	100
116	400 x 200	m ²	100
117	400 x 200	m ²	100
118	400 x 200	m ²	100
119	400 x 200	m ²	100
120	400 x 200	m ²	100



Recommandation

- 1 conteneur HB3S Haul-All

Installation

- À la fin

Sentier nord-est (Sideline 30)



TRAFFIC ACCESS ON ROAD AND FARM EQUIPMENT ACCESS TO FARM FIELDS AT ALL TIMES, PROTECT EXISTING ROAD, SHOULDER AND DRIVEWAYS, RESTORE ALL DISTURBED AREAS TO EXISTING CONDITIONS OR BETTER, TO THE SATISFACTION OF THE OWNER

EXISTING BOULDERS TO BE REMOVED AND DISPOSED OF OFF SITE

TRASH RECEPTACLES (2) 4
SUPPLIED BY PCA D3

FUTURE LOCATION OF ACCESSIBLE PARKING SIGN, TO BE SUPPLIED AND INSTALLED BY PCA

EXISTING PARKING LOT AND DRIVEWAY ENTRANCE AND EXITS TO BE RESTORED WITH NEW GRANULAR MATERIAL, REFER TO DETAIL 4/D6

EXISTING WOOD LOG FENCE TO BE REMOVED AND DISPOSED OF OFF SITE, INCLUDES ENTIRE LENGTH ON EAST SIDE OF EXISTING PARKING LOT

PLAZA SPACE WITH GRANULAR SURFACE, REFER TO TYPICAL TRAIL DETAIL 1/D1

PROPERTY LINE/LIMIT OF ROW

SINGLE CULVERT CROSSING 1
D4

POST & BOARD FENCE 5

Recommandation

- 2 conteneurs Molok de 3 000L

Installation

- À la fin

