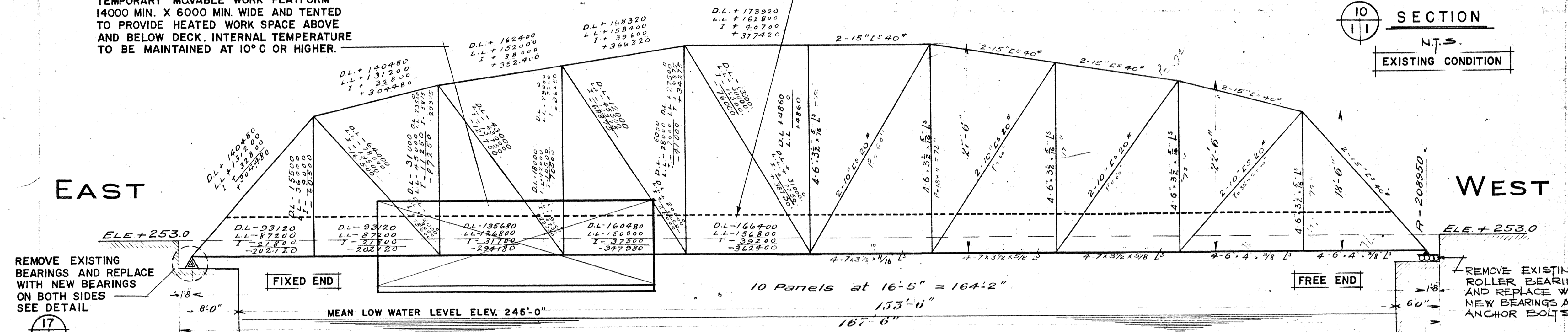


TEMPORARY MOVABLE WORK PLATFORM
14000 MIN. X 6000 MIN. WIDE AND TENTED
TO PROVIDE HEATED WORK SPACE ABOVE
AND BELOW DECK. INTERNAL TEMPERATURE
TO BE MAINTAINED AT 10°C OR HIGHER.

ALL PAINTED SURFACES BELOW ELEVATION +256'-0" (78 029)
TO BE BLAST CLEANED TO NEAR BRIGHT.
SEE SPECIFICATION FOR REQUIRED PRIMING AND PAINTING.



REMOVE EXISTING BEARINGS AND REPLACE WITH NEW BEARINGS ON BOTH SIDES SEE DETAIL

REMOVE EXISTING ROLLER BEARINGS AND REPLACE WITH NEW BEARINGS AND ANCHOR BOLTS

REMOVE 13-EXISTING FLAT BAR BRACES REPLACE WITH NEW L 125 X 125 X 10 BRACES (TYPICAL)

REMOVE EXISTING RIVETS AND GUSSET PLATES ERECT NEW GUSSET PLATES WITH BOLTS SEE DWG. S-2 FOR DETAILS

JACK-UP BRIDGE 10mm AND INSTALL 4-NEW BEARINGS (TYPICAL)

(2-121 31.8) (2-51 10) 20 EXISTING DOUBLE STRINGERS WERE REMOVED IN 1973 AND WERE REPLACED WITH SINGLE (121 31.8) (51 10) STRINGERS CONTINUOUS WELD.

WELD 60 DECK STRINGERS FOR COMPOSITE SECTION SEE DETAIL

ESTIMATE REMOVAL OF 50M² OF DECK GRATING AND REPLACEMENT WITH NEW GRATING TO MATCH EXISTING.

REMOVE WOOD BLOCK AFTER REPAIRS TO GRATING WELDING

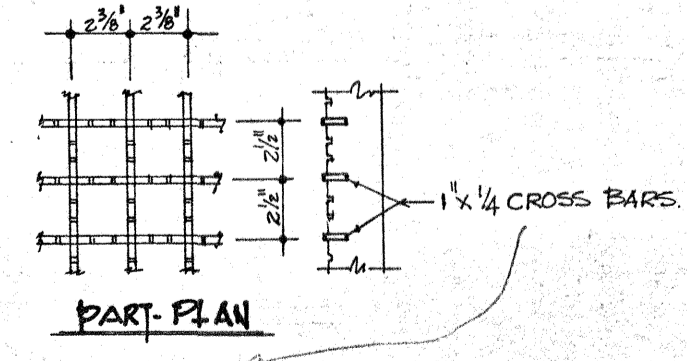
REMOVE 11-EXISTING STRINGER STUBS AND REPLACE WITH 11-NEW STUBS.

THIS GUSSET PLATE HAS RECENTLY BEEN REPLACED

NOTES

- BRIDGE WAS DESIGNED BY PUBLIC WORKS CANADA IN 1915
- FABRICATION WAS BY HAMILTON BRIDGE CO.
- DESIGN WAS BASED ON AN ALLOWABLE WORKING STRESS OF 16000 p.s.i.
- RIVETS ARE 7/8" DIA IN 1 5/16" DIA HOLES.

PLAN OF DECK (FIXED SPAN BRIDGE)
SCALE: 1/8" = 1'-0"



DETAIL OF GRATING (EXISTING)

PATTERN OF WELDING FOR EXISTING GRATING.

NOTE: DIMENSIONS OF NEW MATERIALS ARE SHOWN IN MILLIMETRES. EXISTING MATERIALS ARE SHOWN IN IMPERIAL.

revisions _____ date _____

| | |
|---|--|
| A | Detail no. / no. du détail |
| B | Drawing no. - where detail required / dessin no. - où détail exigé |
| C | Drawing no. - where detailed / dessin no. - où détaillé |

project title / titre du projet
KINGSTON ONTARIO
LA SALLE CAUSEWAY

BRIDGE REPAIRS

KEY PLAN
PLAN OF DECK
ELEVATION
SECTION

designed by / conçu par
JOHN A. BOWLAND

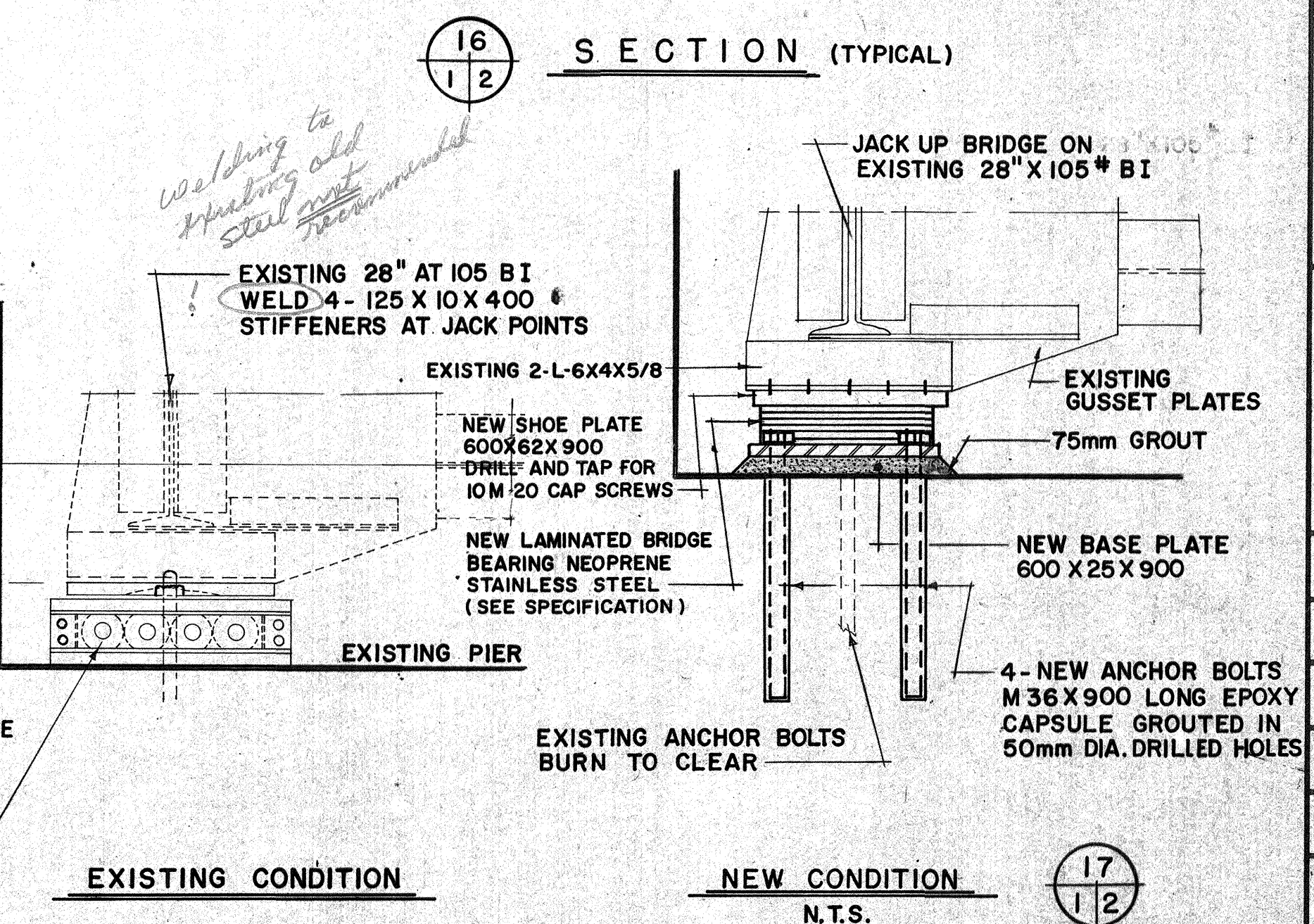
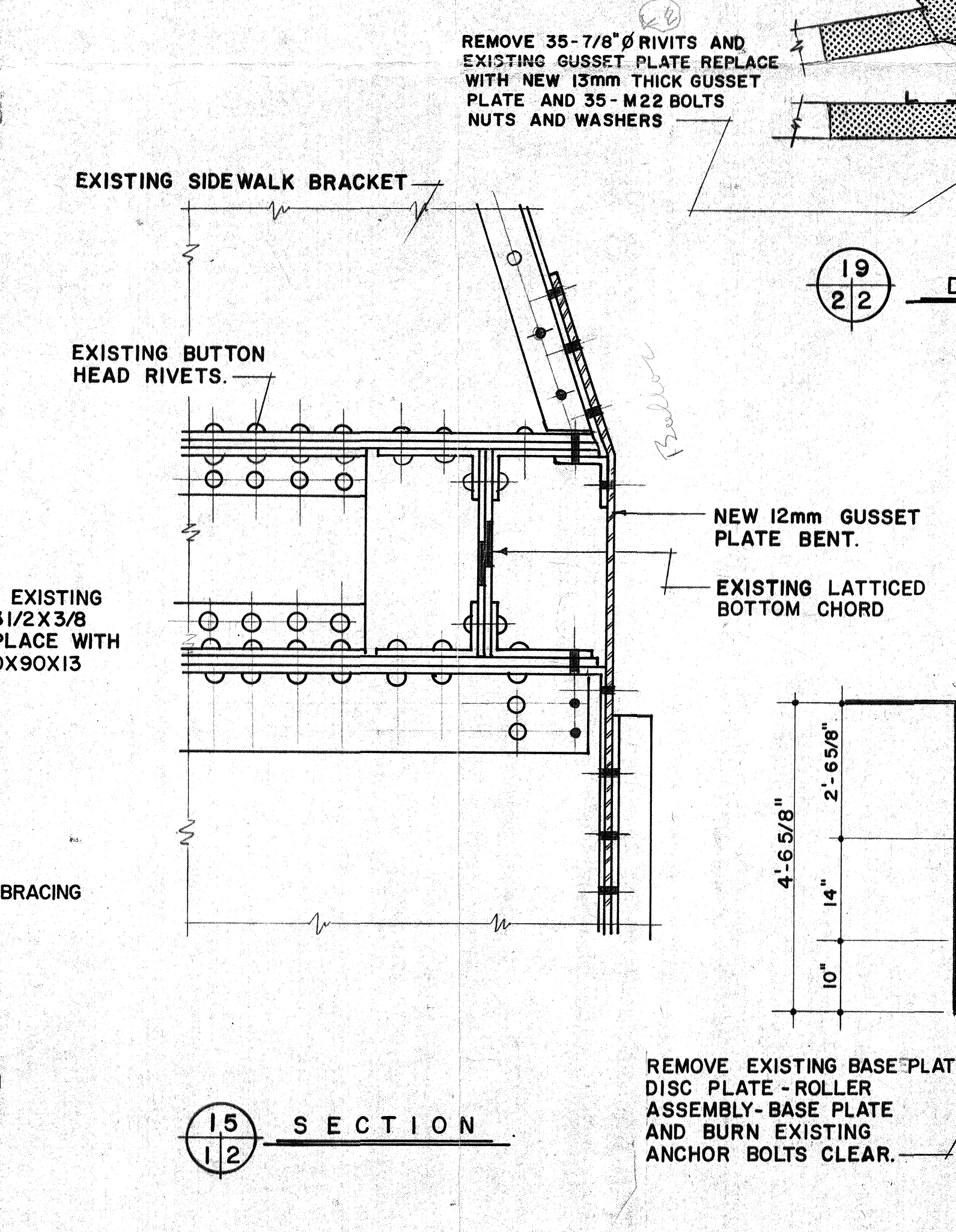
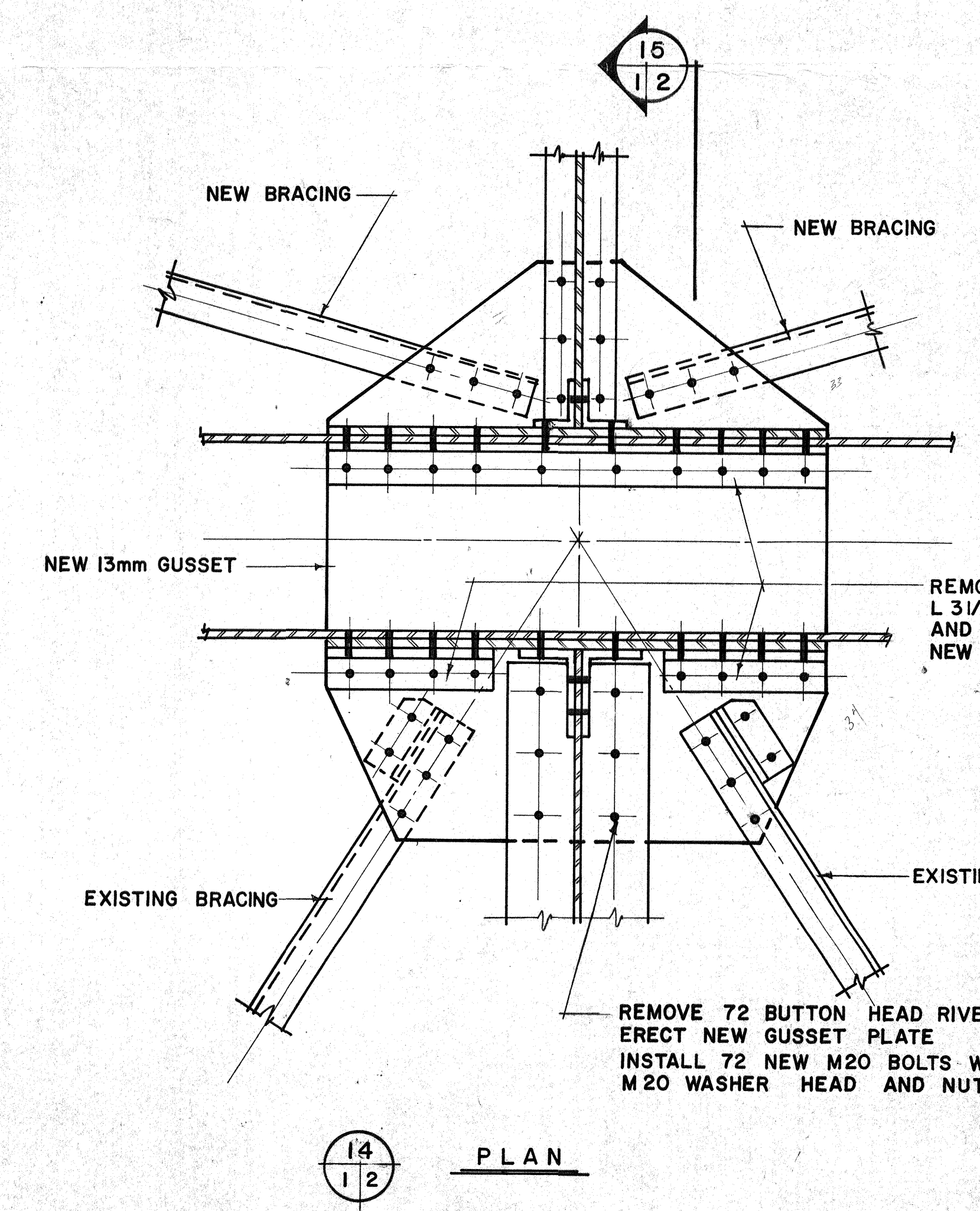
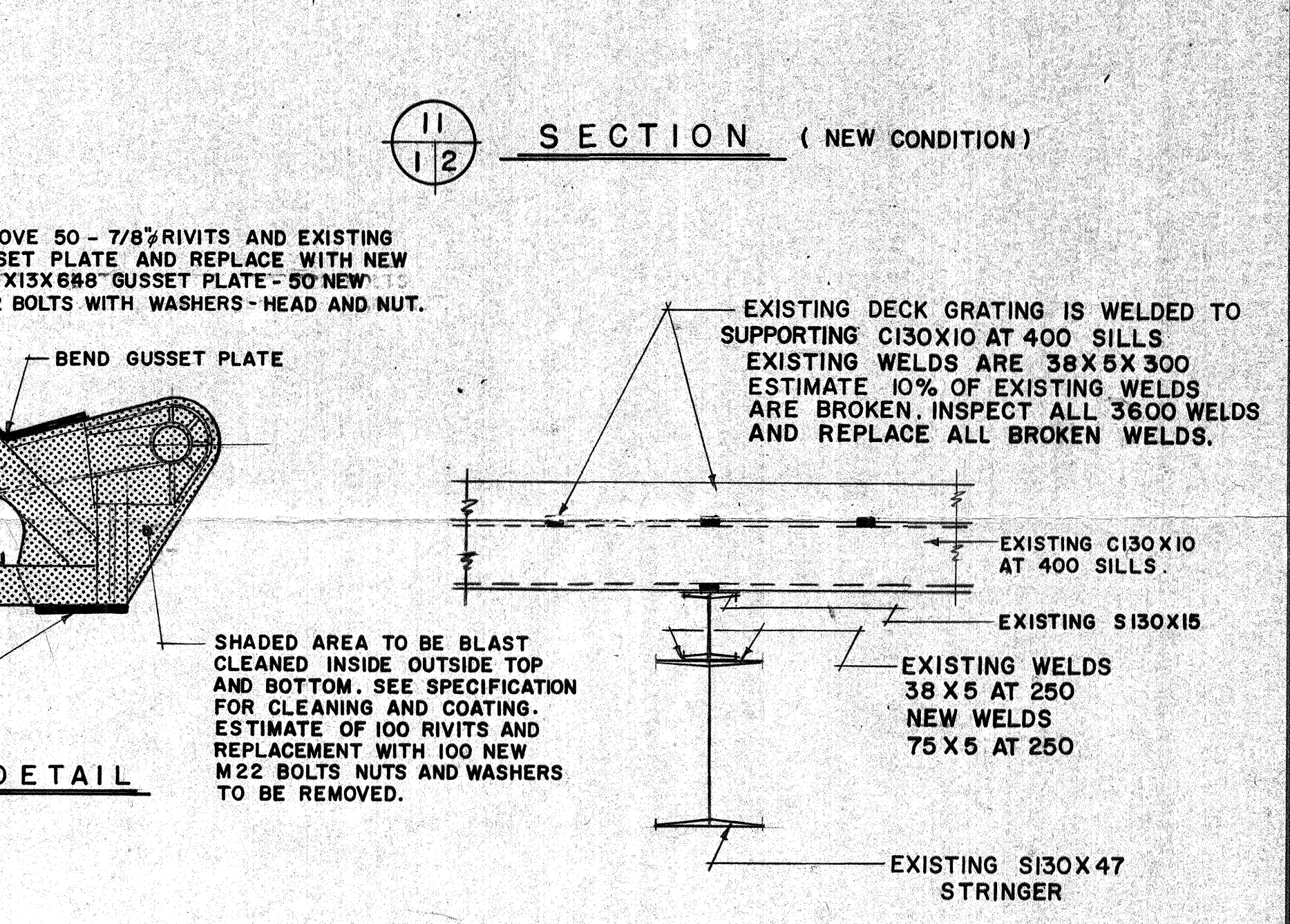
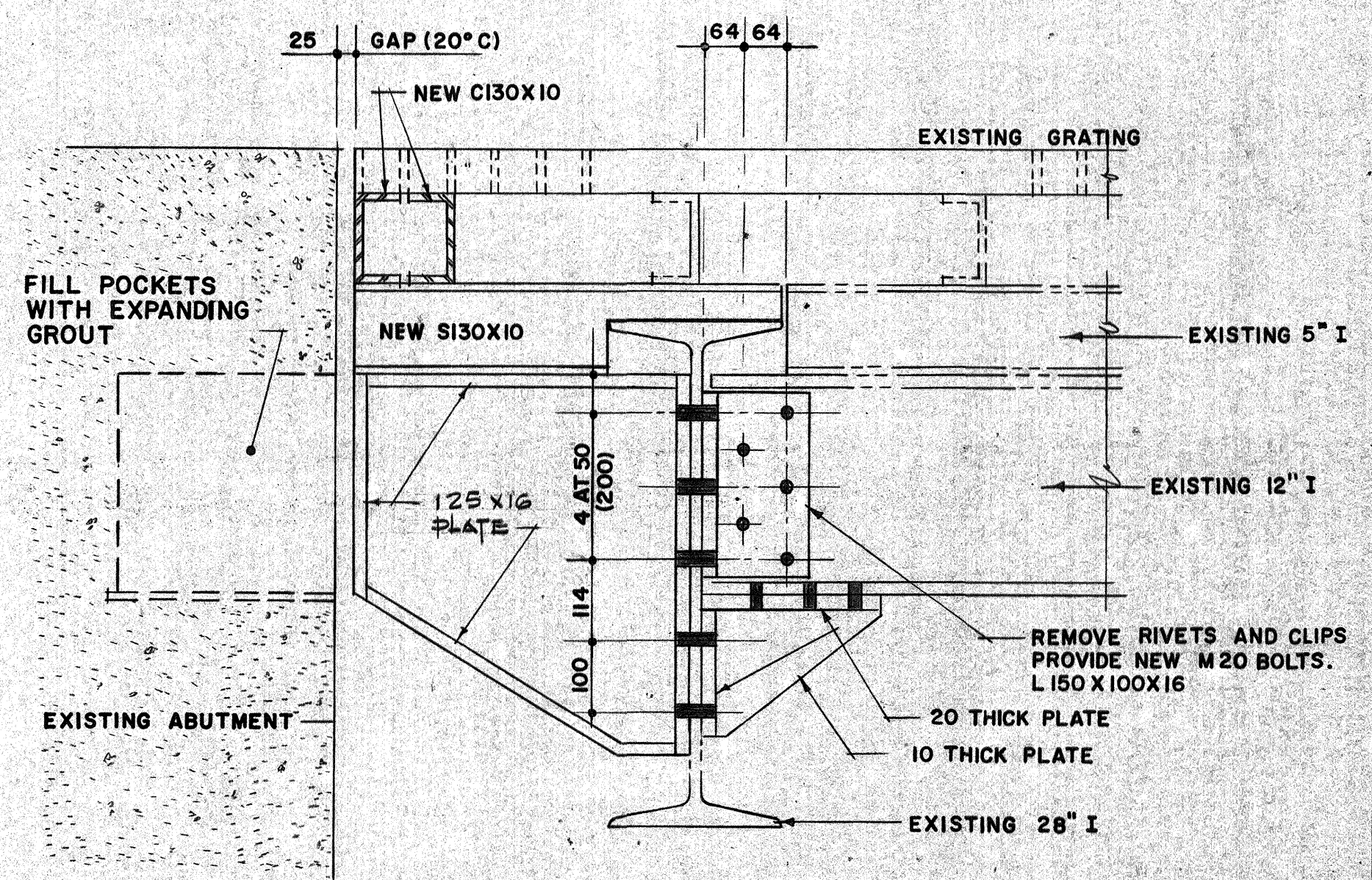
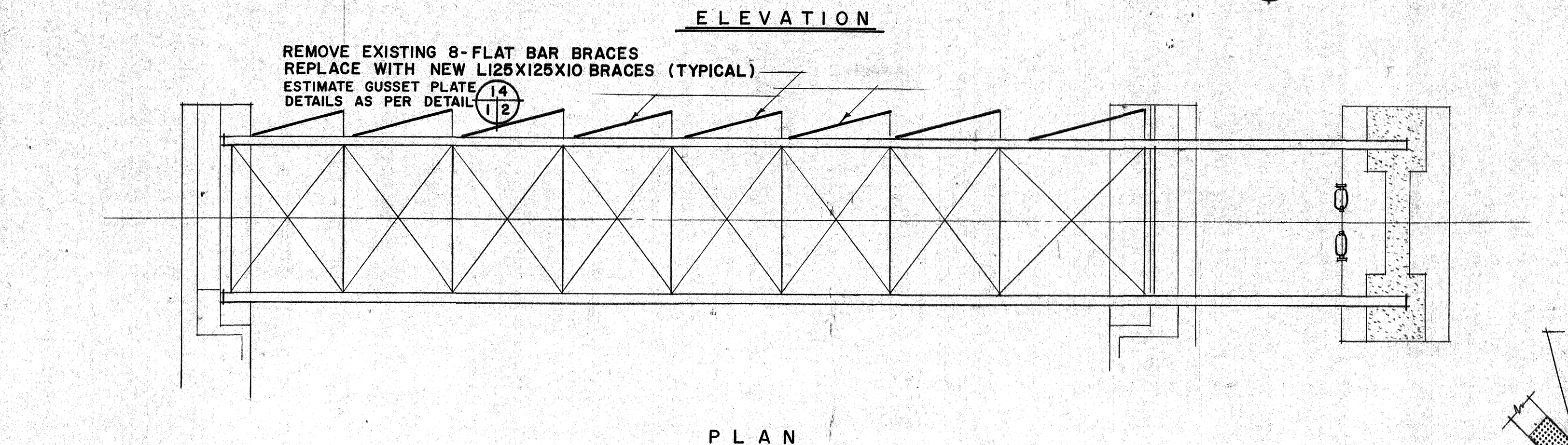
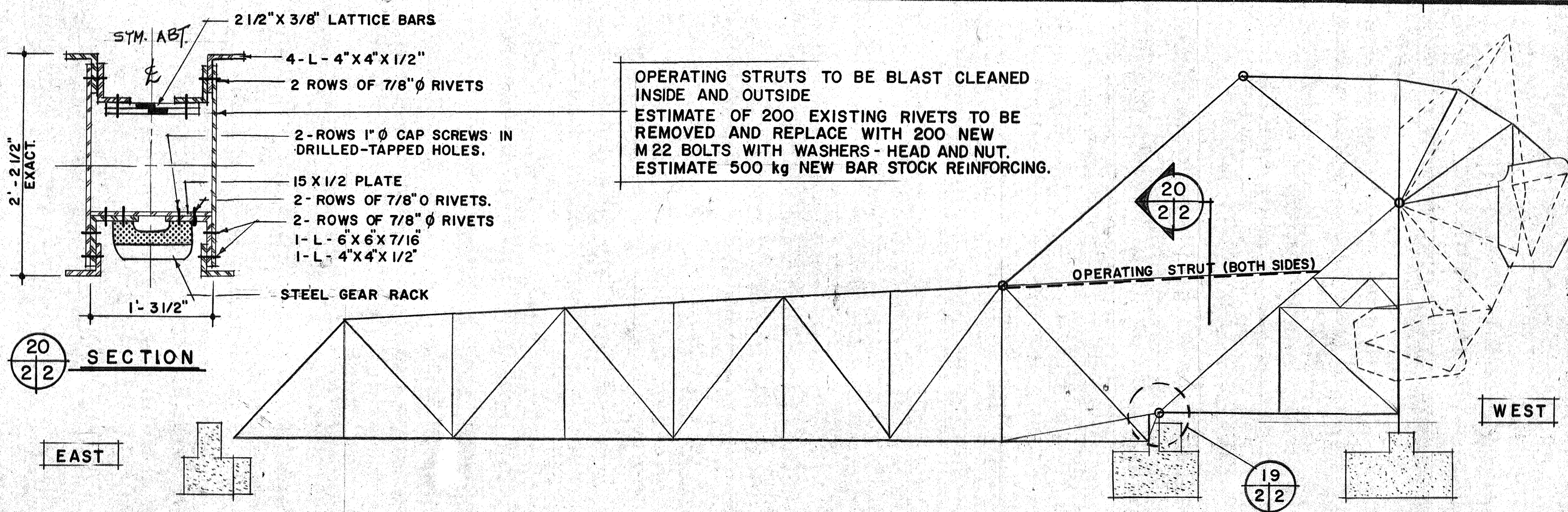
drawn by / dessiné par
C. A. L.

approved by / approuvé par

project date / date du projet
1983-12-

project no. / no. du projet
181243

drawing no. / dessin no.
S - 1



NOTE: DIMENSIONS OF NEW MATERIALS ARE SHOWN IN MILLIMETRES. EXISTING MATERIALS ARE SHOWN IN IMPERIAL.

Revisions: _____
date _____

A detail no. - no. du détail
B drawing no. - where detail required dessin no. - où détail exigé
C drawing no. - where detailed dessin no. - où détaillé

project title / titre du projet
KINGSTON ONTARIO
LA SALLE CAUSEWAY

BRIDGE REPAIRS

drawing title / titre du dessin
PLAN ELEVATION SECTIONS DETAILS

designed by / conçu par
JOHN A. BOWLAND

drawn by / dessiné par
C. A. L.

reviewed by / examiné par

approved by / approuvé par

project date / date du projet
1983 - 12 -

project no. / no. du projet
181243

drawing no. / dessin no.
S-2