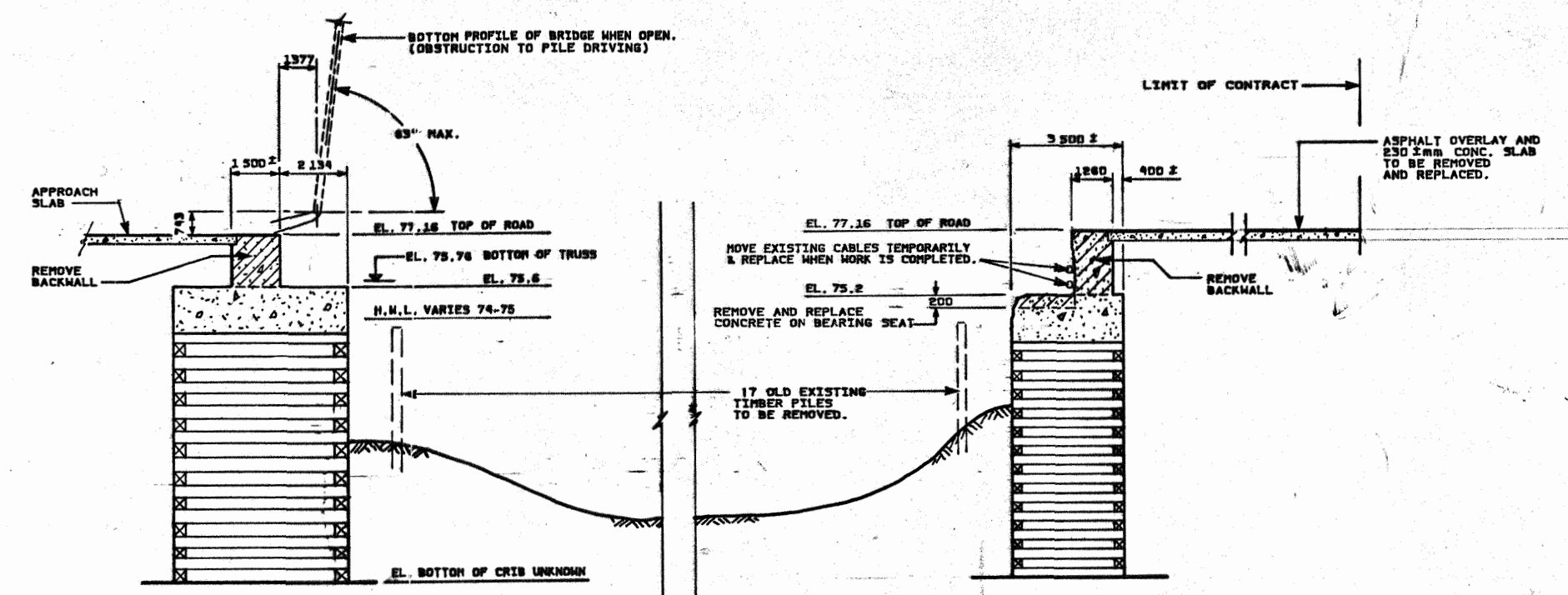
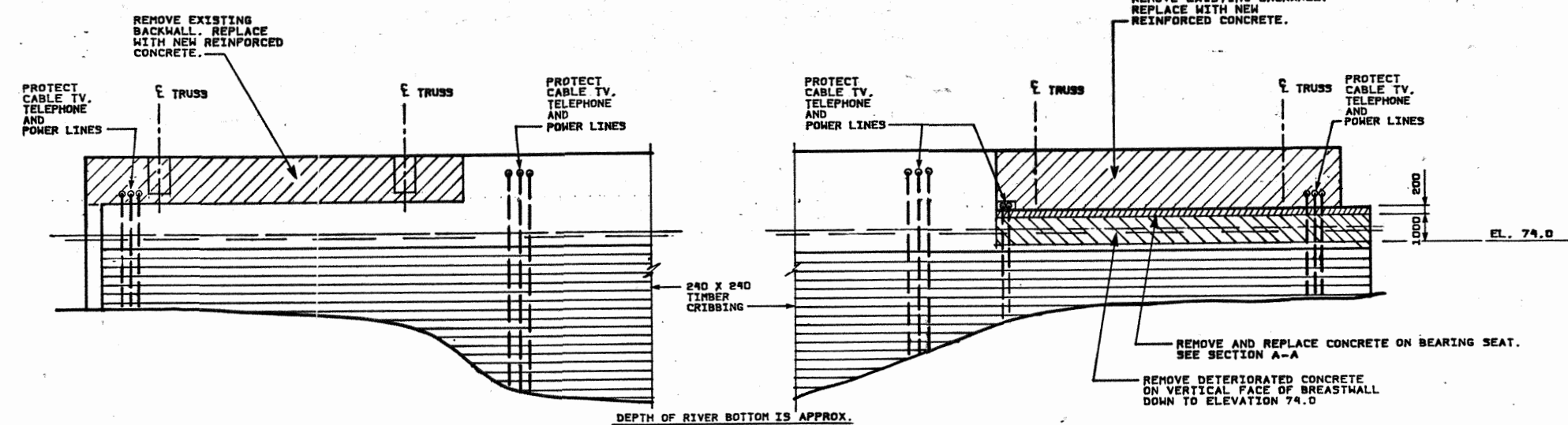


PLAN OF EXISTING ABUTMENTS
SCALE 1:100



SECTION A - A
SCALE 1:100



ELEVATION - WEST ABUTMENT
SCALE 1:100

ELEVATION - EAST ABUTMENT
SCALE 1:100



LOCATION MAP

- LIST OF DRAWINGS**
1. EXISTING ABUTMENTS AND MODIFICATIONS
 2. PILING AND TIE-BACK SYSTEM
 3. EAST ABUTMENT AND H FILE DETAILS
 4. ORIGINAL DRAWING - BASCULE BRIDGE OPERATION
- REINFORCING SCHEDULE**

- NOTES**
1. CONTRACTORS TO VISIT SITE TO VERIFY CONDITIONS AND SURVEY EXTENT OF WORK PRIOR TO SUBMITTING BID.
 2. CONTRACTORS TO VISIT SITE TO VERIFY ALL DIMENSIONS PRIOR TO PROCEEDING WITH WORK. ANY DISCREPANCIES ARE TO BE REPORTED DIRECTLY TO THE ENGINEER, WHO WILL THEN INSTRUCT THE GENERAL CONTRACTOR ON HIS NEXT COURSE OF ACTION. FAILURE TO REPORT ANY DISCREPANCIES WILL IMPLY THAT ALL WORK CONFORMS WITH THE DESIGN DOCUMENTS AND ANY COSTS RESULTING WILL BE INCURRED WHOLELY BY THE GENERAL CONTRACTOR.
 3. THE SPECIFICATIONS MARKED "SPECIFICATIONS" ARE AN INTEGRAL PART OF THIS CONTRACT AND ARE TO BE READ IN CONJUNCTION WITH THE DRAWINGS. THE WORK SHALL BE PERFORMED ACCORDINGLY.
 4. THE EXISTING DRAWINGS ARE AVAILABLE UPON REQUEST BY THE GENERAL CONTRACTOR FROM THE ENGINEER. NOTE THAT THE EXISTING DRAWINGS DO NOT NECESSARILY DESCRIBE THE AS-BUILT CONDITIONS. HENCE ITEMS #1 AND #2 MUST BE FOLLOWED.
 5. CONSTRUCTION TO BE DONE IN STAGES TO ALLOW FOR ONE LANE OF TRAFFIC AT ALL TIMES EXCEPT WHILE INSTALLING PILES BETWEEN THE HOURS OF 10:00 pm TO 6:00 am WHEN THE BRIDGE IS CLOSED TO TRAFFIC.

- GENERAL NOTES**
1. SPECIFICATIONS: PROJECT SPECIFICATIONS (HEREINAFTER THESE WILL BE REFERRED TO AS SPECS) AASHTO SPECIFICATIONS-1977, CSA STANDARDS AND AS NOTED.
 2. DESIGN CODE: CANCSA 96-88, UNLESS NOTED OTHERWISE.
 3. DESIGN LOAD: CANCSA 96-88, UNLESS NOTED OTHERWISE.
 4. UNITS: 1. CHANGES AND ELEVATIONS IN m.
2. DIMENSIONS IN mm.
 5. STRUCTURAL STEEL: TO CSA CAN5-G40.21-M1987, GRADE 350W, UNLESS NOTED OTHERWISE.
 6. CONCRETE STRENGTH AT 28 DAYS: 30 MPa MINIMUM, SEE SPECS.
 7. STEEL SHEET PILING: TO CSA CAN-G40.21-M1987, OR G30.16-1977, GRADE 350W, DEFORMED BARS, SEE SPECS.
 8. REINFORCING STEEL: TO CSA G30.12-M1977, OR G30.16-1977, GRADE 400 DEFORMED BARS, SEE SPECS.
 9. EPOXY-COATED REINFORCING BARS: DESIGNATED XXXE, SEE SPECS.
 10. CONCRETE COVER FOR REINFORCING BARS: 75 mm, UNLESS NOTED OTHERWISE.
 11. CHAMFER EXPOSED EDGES 20 mm, UNLESS NOTED OTHERWISE.
 12. CONCRETE FINISH: SEE SPECS.
 13. HOT DIP GALVANIZING: TO CSA G184-M81.
 14. WELDING: TO CSA W59-M89, UNLESS NOTED OTHERWISE.
 15. ALL CONSTRUCTION JOINTS TO BE ROUGHENED, THOROUGHLY CLEANED OF FOREIGN MATTER AND LANTANE.
 16. PROTECT ALL UTILITIES DURING ALL STAGES OF CONTRACT. SEE SPECS.
 17. INFORMATION AND BENCH MARKS, EXISTING STRUCTURE LOCATION AND ORIENTATION, TO BE OBTAINED FROM PUBLIC WORKS CANADA, ONTARIO REGION, A & E SERVICES, 4900 YONGE ST., WILLOWDALE, ONTARIO, M2N 6A6.

Designed by / Conçu par	W.J. DANSON	date
Checked by / Examiné par	K.K. SOOD	date
Drawn by / Dessiné par	G.E. ROBERTS	date
Checked by / Examiné par	W.J. DANSON	date
Approved by / Approuvé par		date

Manager - Bridge Services / Gestionnaire des Ponts

LASALLE CAUSEWAY BASCULE BRIDGE
KINGSTON - ONTARIO

EXISTING ABUTMENTS AND MODIFICATIONS

1992 RENOVATION

project no. / no. du projet	670664
drawing no. / dessin no.	1 of 4

Date: 92/07/20

*Superseded
your change*

Superseded

Designed by / Conçu par W.J. DANSON date

Checked by / Examiné par K.K. SOOD date

Drawn by / Dessiné par G.E. ROBERTS date

Checked by / Examiné par W.J. DANSON date

Approved by / Approuvé par date

W. J. Danson 92-07-21
 Manager - Bridge Services / Manager - Gestionnaire des Ponts

project / projet

LASALLE CAUSEWAY BASCULE BRIDGE
 KINGSTON - ONTARIO

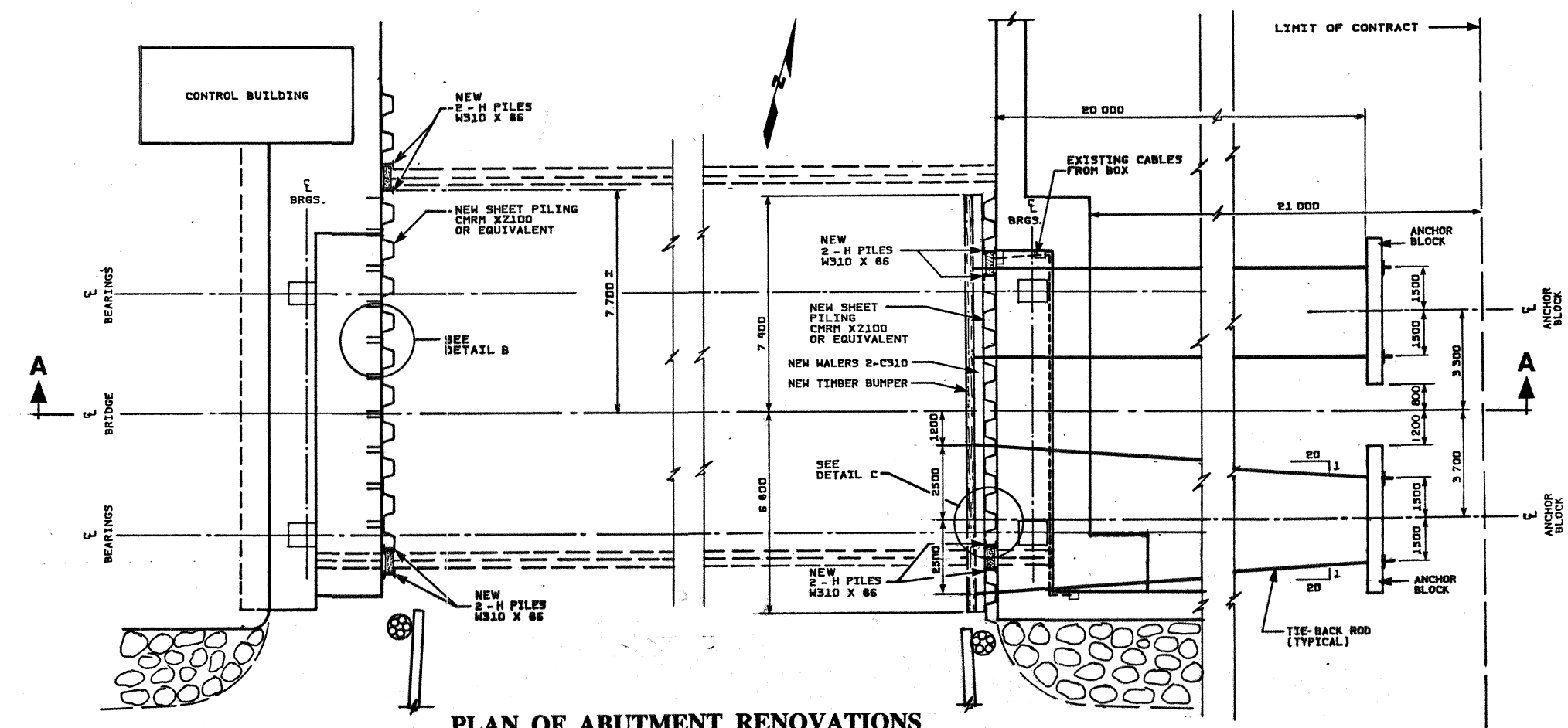
drawing / dessin

PILING AND TIE-BACK SYSTEM

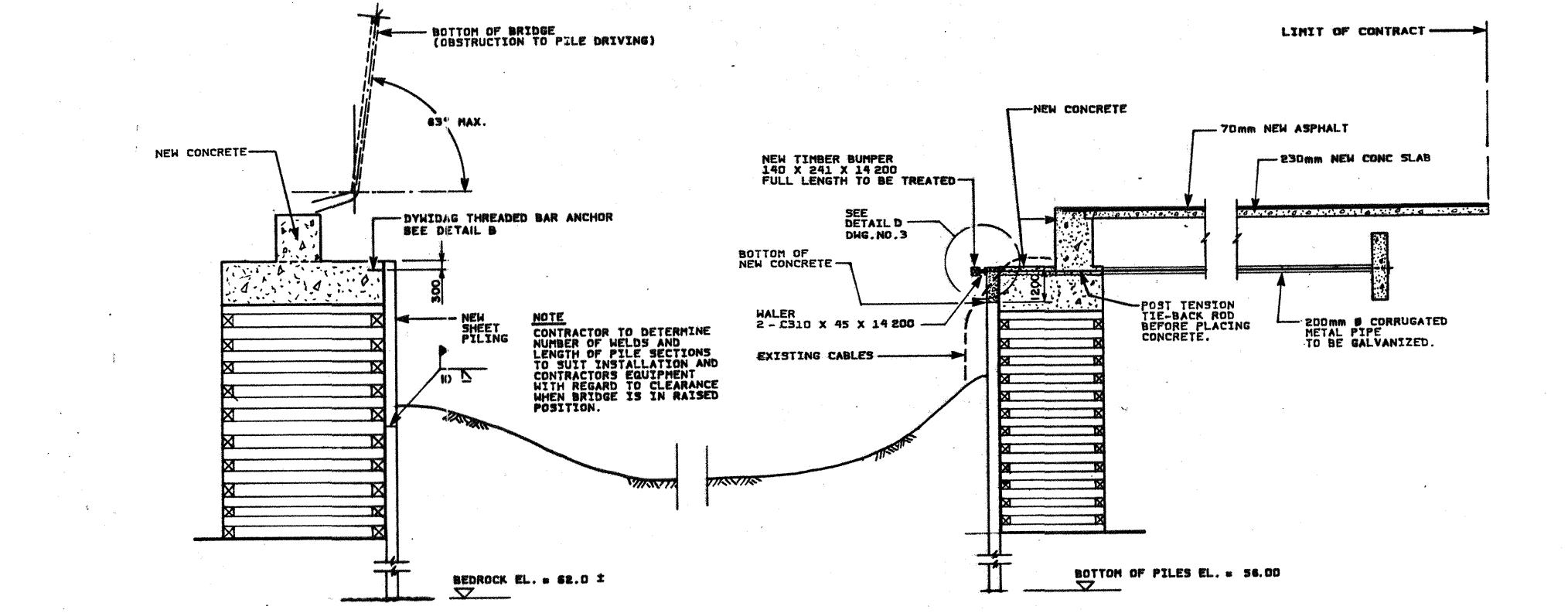
1992 RENOVATION

project no. / no. du projet 670664

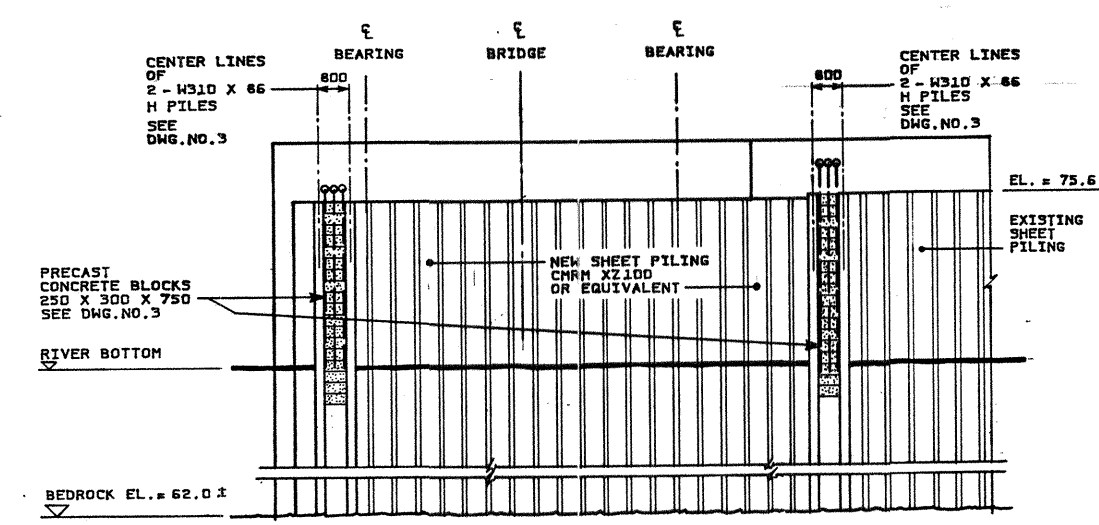
drawing no. / dessin no. 2 of 4



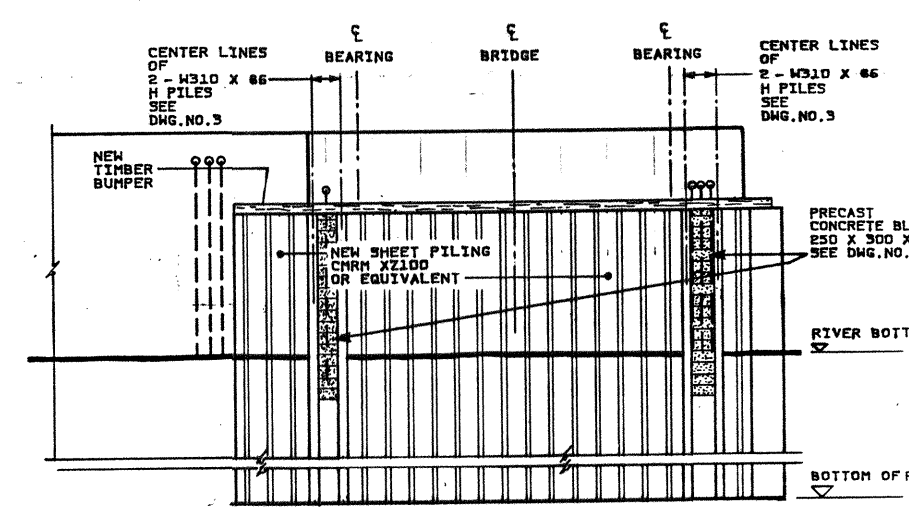
PLAN OF ABUTMENT RENOVATIONS
 SCALE 1:100



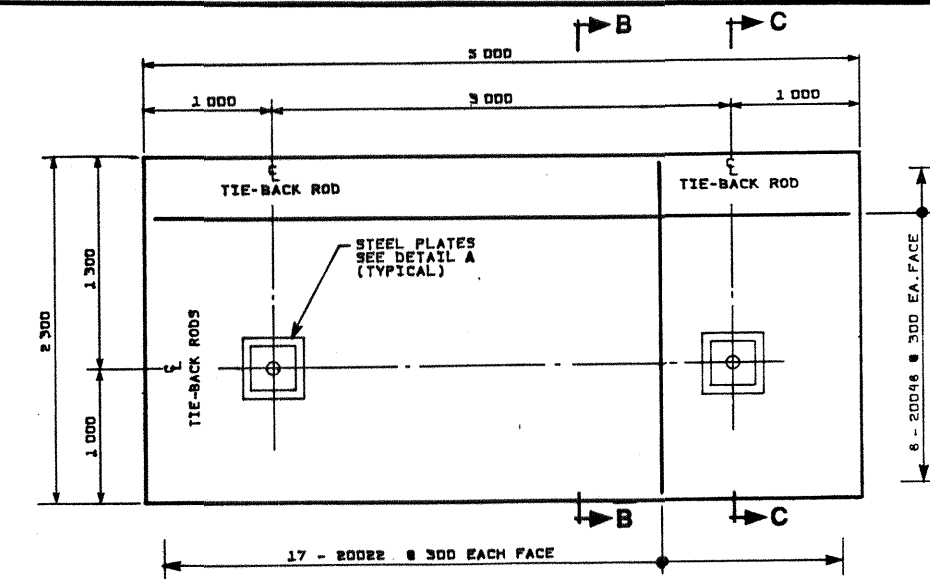
SECTION A-A
 SCALE 1:100



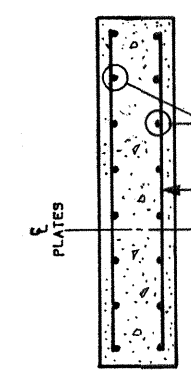
ELEVATION - WEST ABUTMENT
 SCALE 1:100



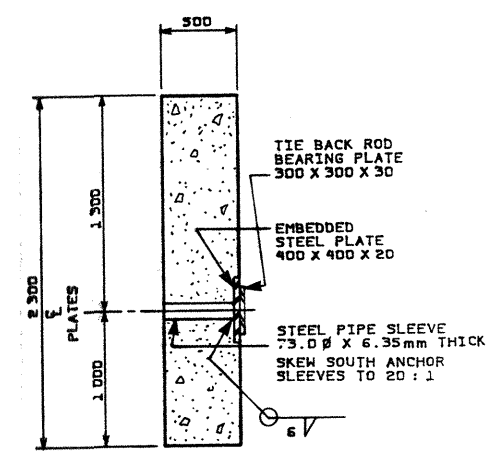
ELEVATION - EAST ABUTMENT
 SCALE 1:100



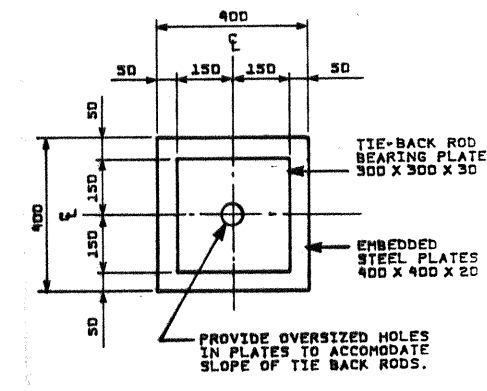
ELEVATION
 N.T.S.



SECTION B-B
 (REINFORCING)
 SCALE 1:25

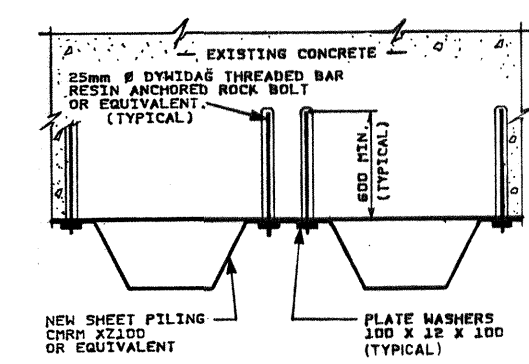


SECTION C-C
 (CONCRETE)
 SCALE 1:25

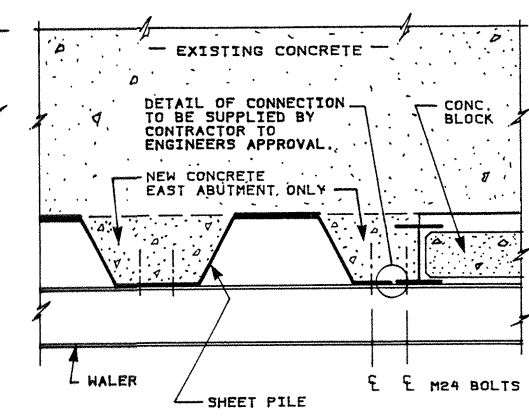


DETAIL A
 SCALE 1:10

ANCHOR BLOCK DETAILS
 (2 REQUIRED)



DETAIL B
 SCALE 1:20



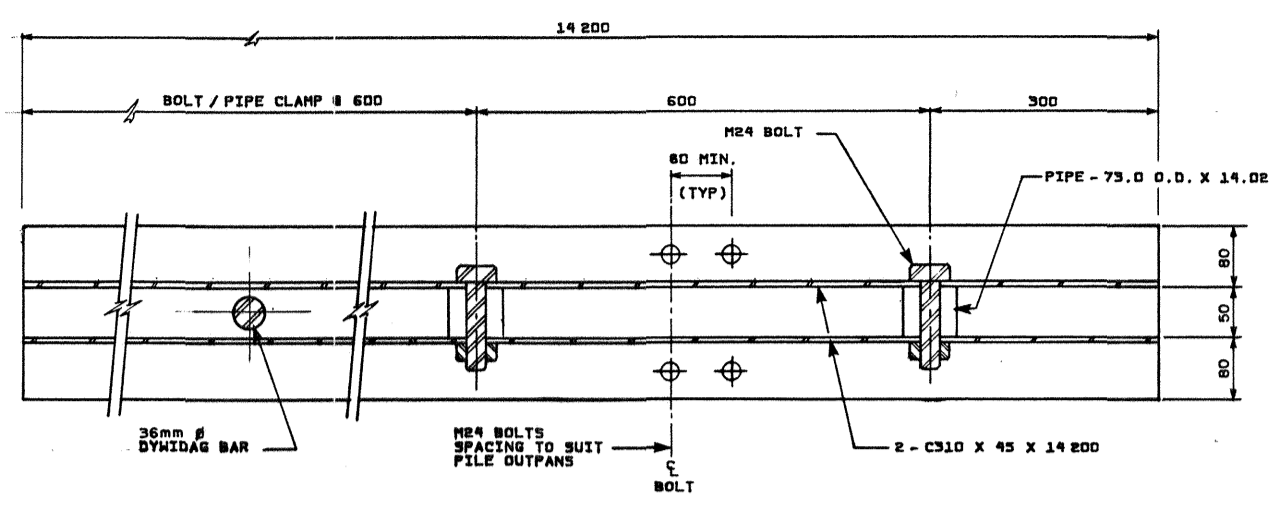
DETAIL C
 SCALE 1:20

NOTES

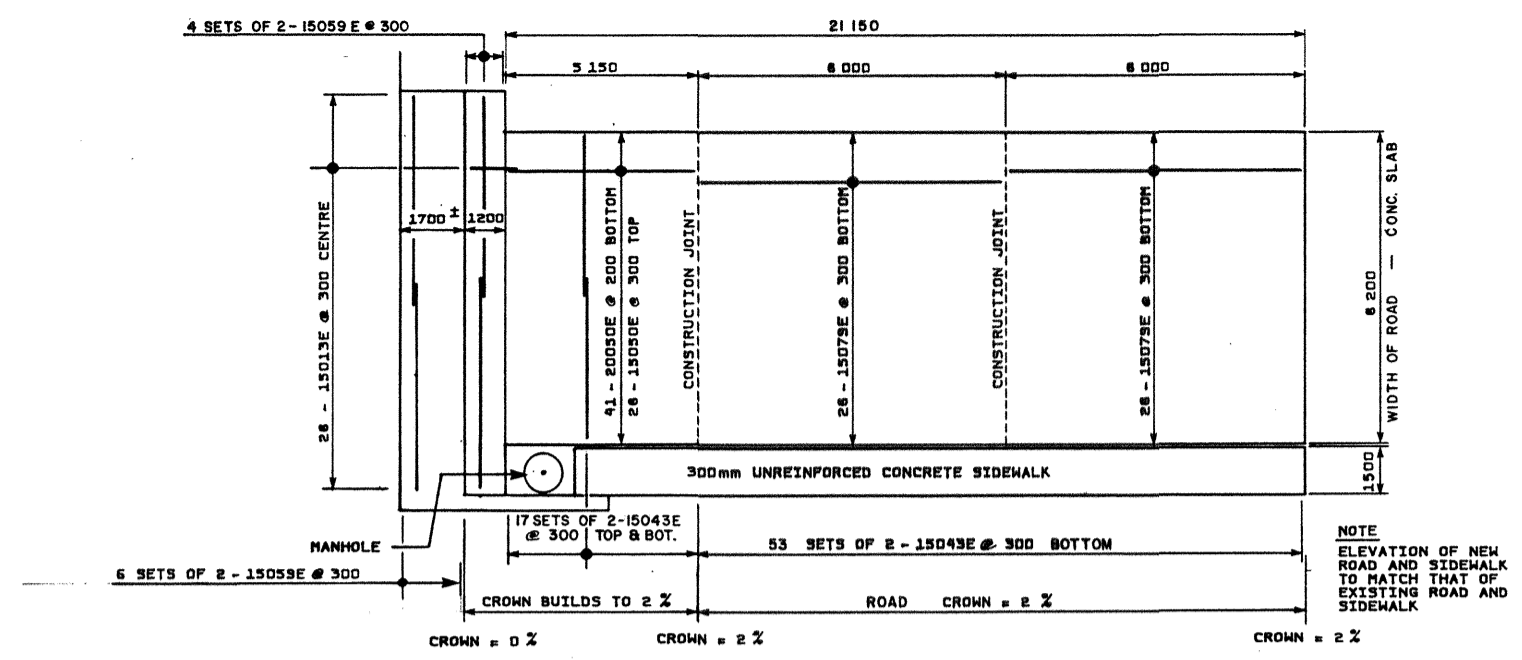
- FOR GENERAL NOTES SEE DRAWING NO. 1.
- SCALE: AS NOTED.

Date / 92/07/20

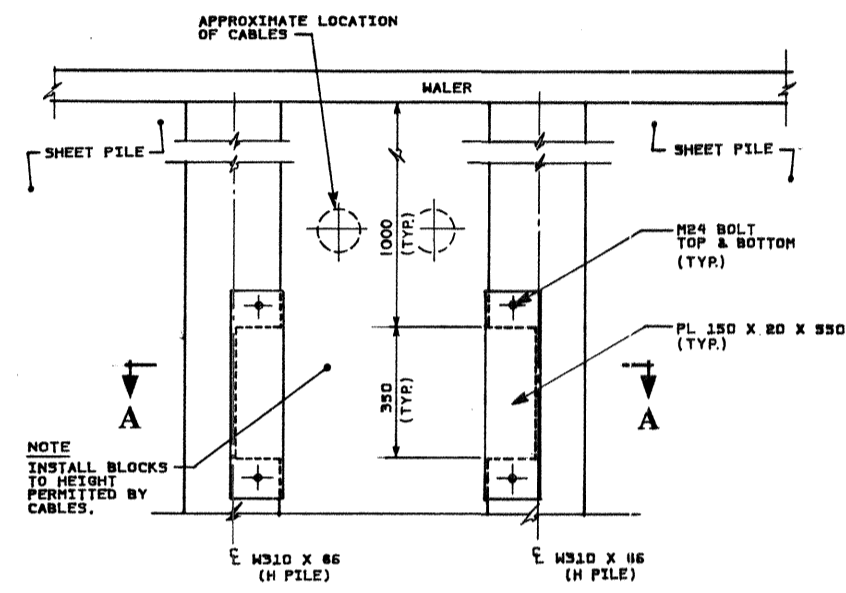
super soled



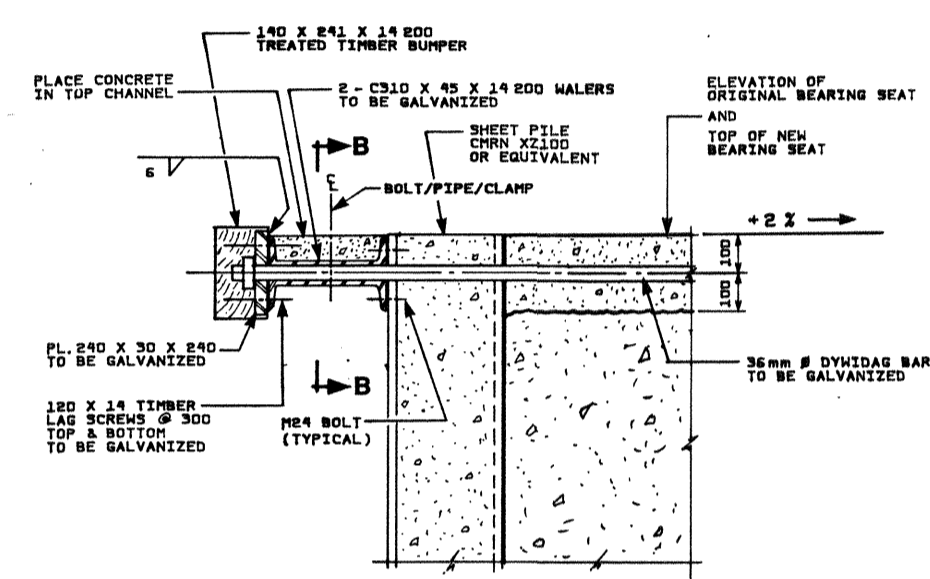
WALER - SECTION B-B
SCALE 1:5



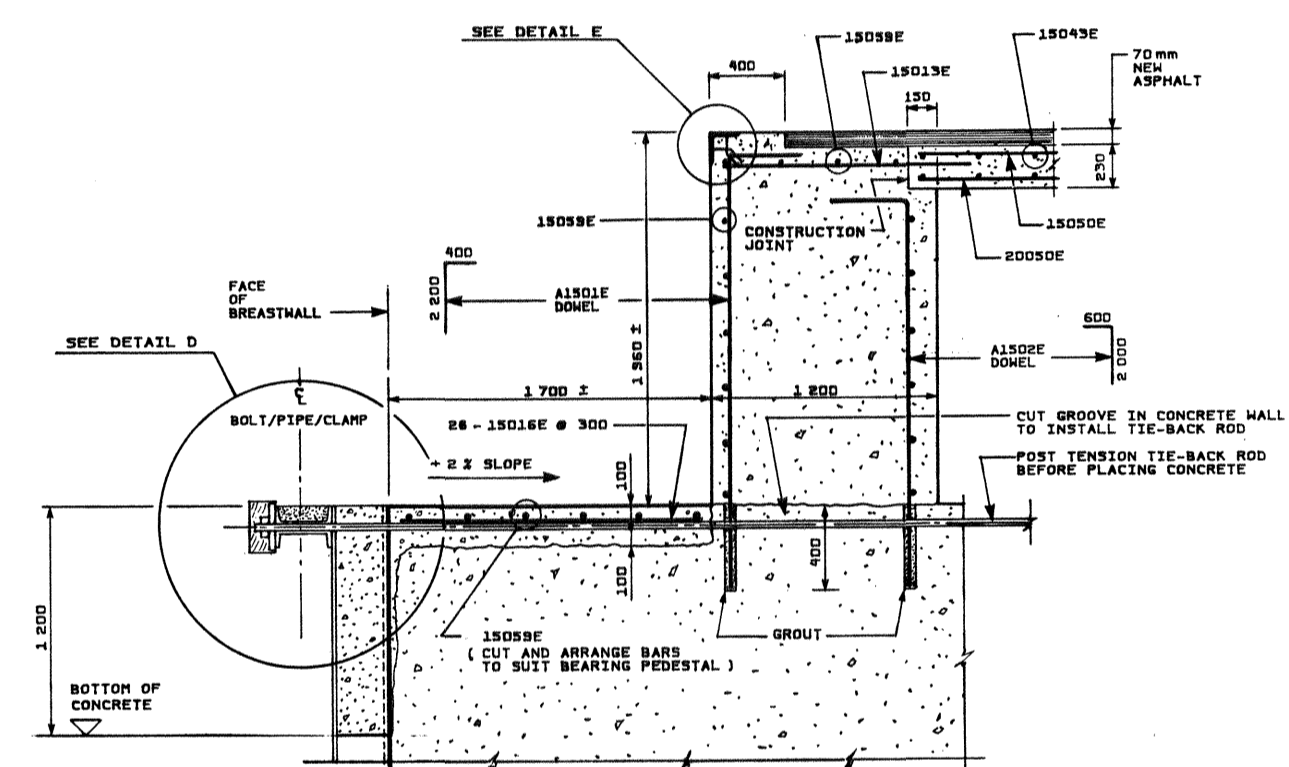
EAST APPROACH ROAD - PLAN, REINFORCING
SCALE 1:100



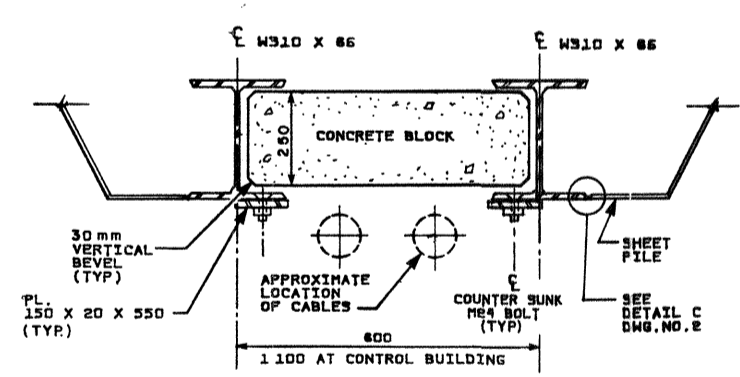
H PILE ACCESS FOR CONC. BLOCKS
SCALE 1:10



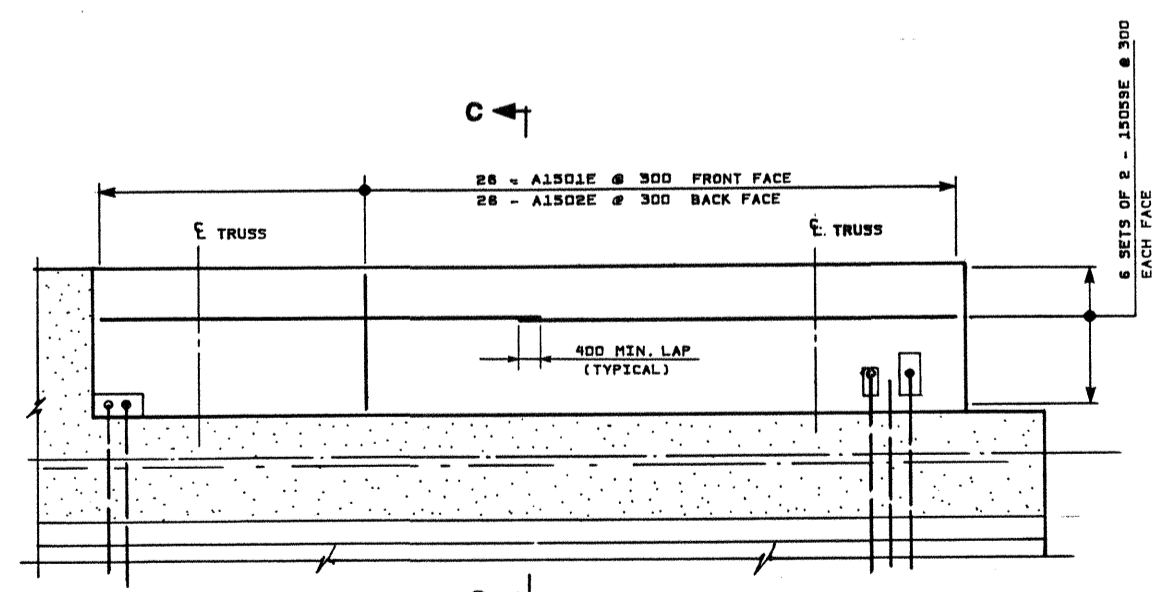
WALER - DETAIL D
SCALE 1:10



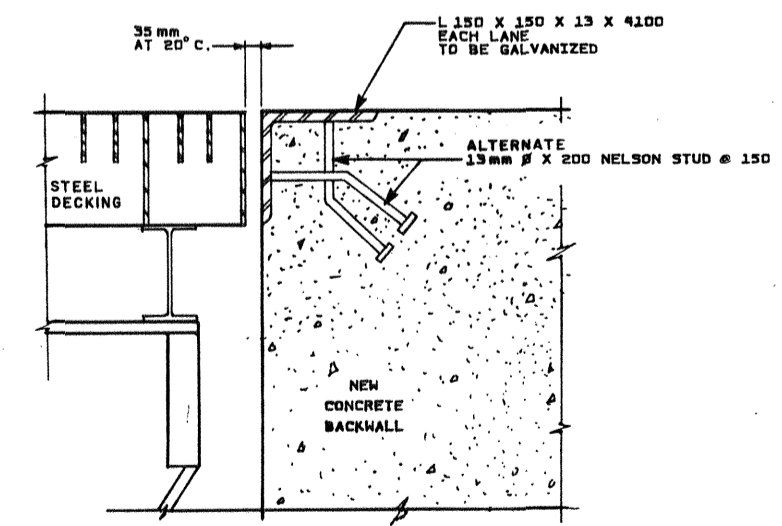
SECTION C-C
SCALE 1:20



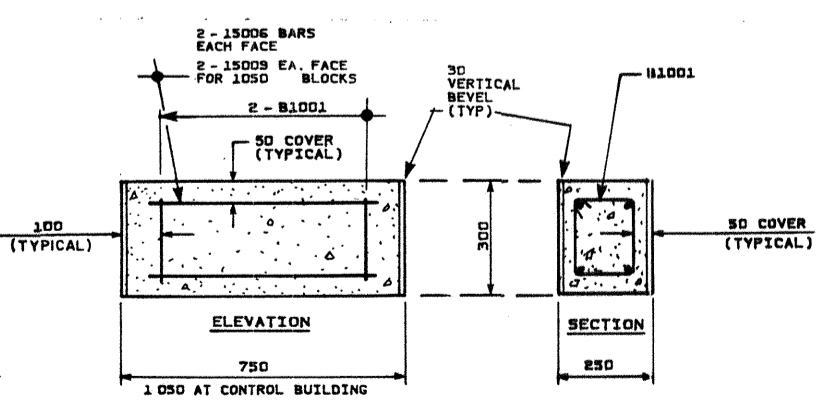
SECTION A-A
SCALE 1:10



ELEVATION - EAST ABUTMENT
SCALE 1:50



DETAIL E
SCALE 1:5



CONCRETE BLOCKS FOR H PILES
SCALE 1:10

NOTE
CONTRACTOR MAY INSTALL RECESSED HANDLING HARDWARE AT HIS COST AND TO THE APPROVAL OF THE ENGINEER.
52 - 750 LONG BLOCKS REQUIRED
20 - 1050 LONG BLOCKS REQUIRED

- NOTES**
- FOR GENERAL NOTES SEE DRAWING NO. 1.
 - SCALE: AS NOTED.
 - INCREASE GAP BETWEEN DECK AND ABUTMENT BY 3mm FOR EVERY 5°C BELOW 20°C.

92/07/20

Designed by
Conçu par W.J. DANSON date

Checked by
Examiné par K.K. SOOD date

Drawn by
Dessiné par G.E. ROBERTS date

Checked by
Examiné par W.J. DANSON date

Approved by
Approuvé par

Albert 92-07-21
Manager - Bridge Services
Manager - Gestionnaire des Ponts

project
**LASALLE CAUSEWAY
BASCULE BRIDGE**
KINGSTON - ONTARIO

drawing
**EAST ABUTMENT
AND
H PILE DETAILS**

1992 RENOVATION

project no. 670664 no. du projet

drawing no. 3 of 4 dessin no.

