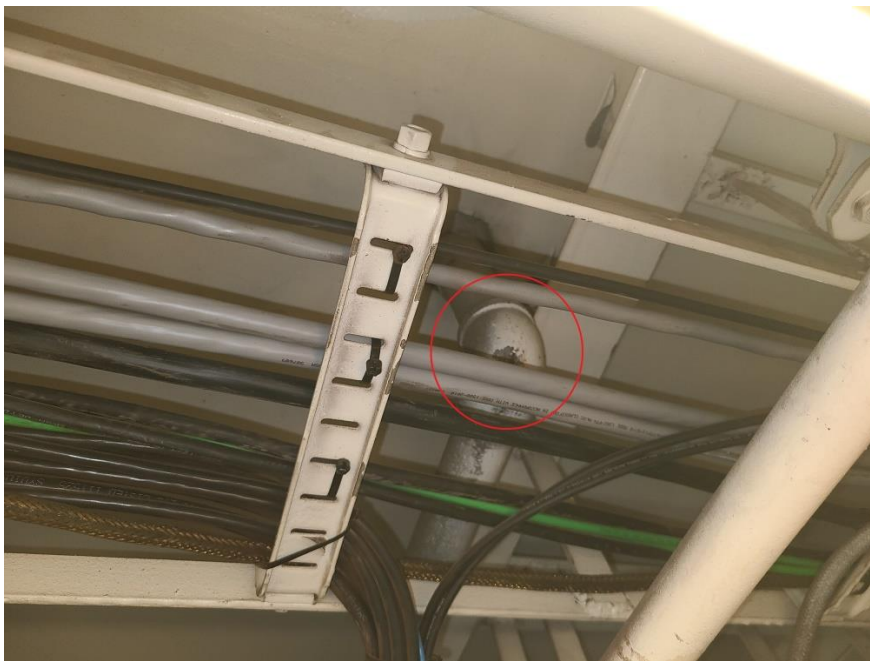


Grey water drain from galley fridges and scuppers.

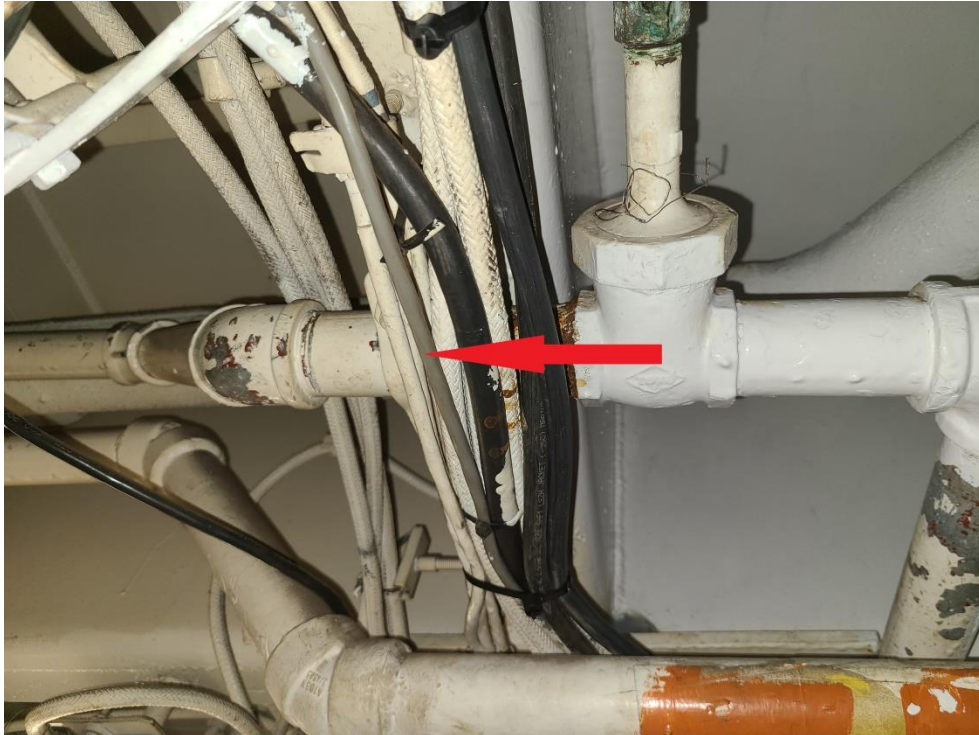
Water is collecting in Mud room scupper drain. Drain was snaked to penetration by Mini Jet. Blockage is suspected to be between penetration and horizontal pipe leading to sewage transfer tank.



1.5 inch drain line through deck penetration



Other side of penetration in deck head. Located fwd of #2 main engine. Blockage is suspected to be in this section of pipe



Line terminates above sewage transfer tank at 1.5 inch screw down valve. (arrow pointing to grey water drain line)

Apx 30 ft of 1.5 inch thread pipe (1.910 OD)