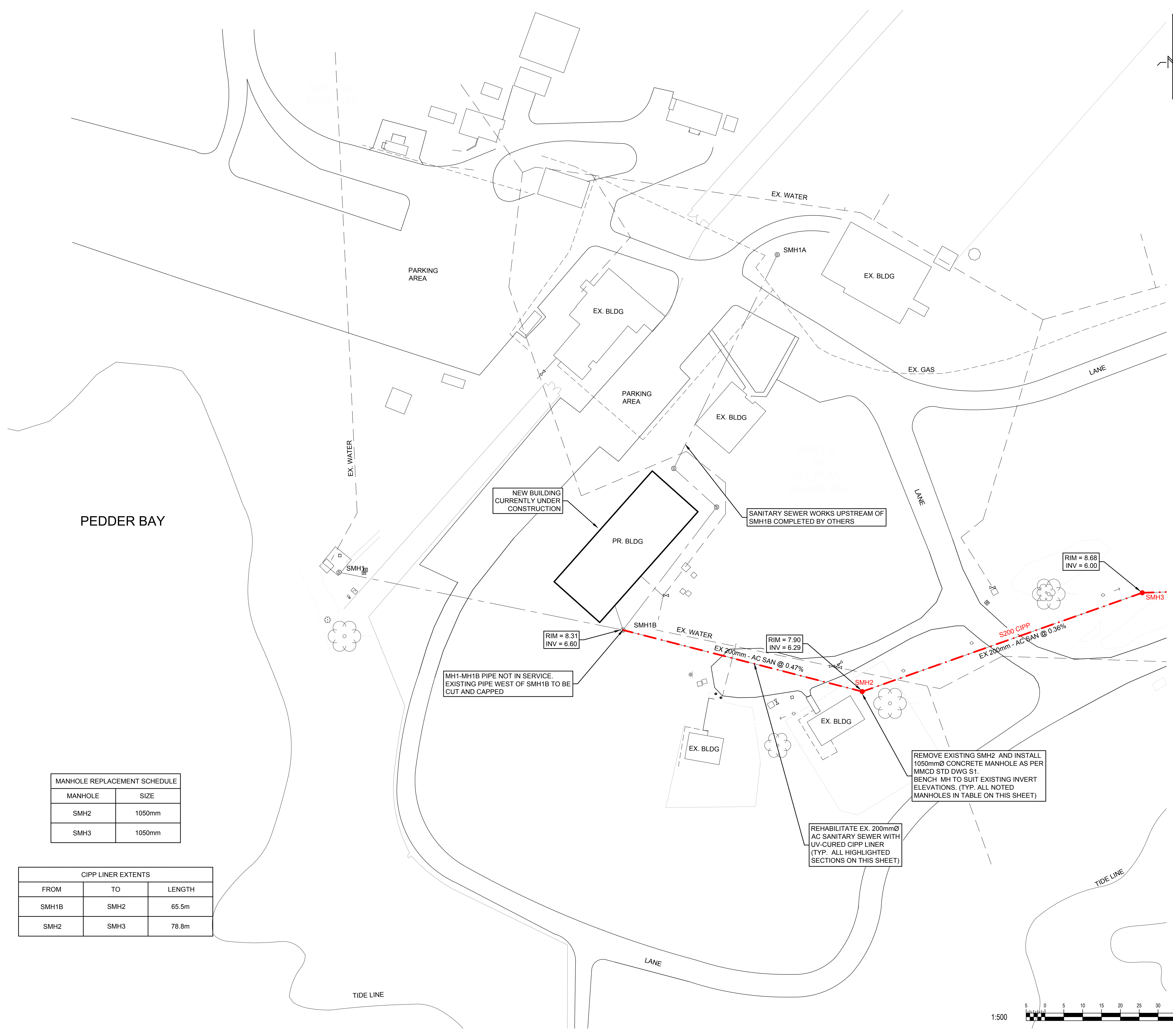


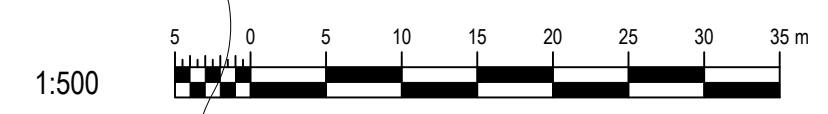
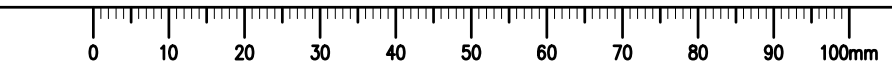


SEE C-02 FOR CONTINUATION



| MANHOLE | SIZE   |
|---------|--------|
| SMH2    | 1050mm |
| SMH3    | 1050mm |

| FROM  | TO   | LENGTH |
|-------|------|--------|
| SMH1B | SMH2 | 65.5m  |
| SMH2  | SMH3 | 78.8m  |



| Revision/Revision | Description/Description | Date/Date |
|-------------------|-------------------------|-----------|
| 5                 |                         |           |
| 4                 |                         |           |
| 3                 |                         |           |
| 2                 | ISSUED FOR TENDER       | 20/03/27  |
| 1                 | ISSUED FOR 98% DESIGN   | 20/02/28  |
| 0                 | ISSUED FOR 66% REVIEW   | 20/01/31  |

Client/client  
**WILLIAM HEAD INSTITUTION**  
 6000 WILLIAM HEAD ROAD  
 METCHOSIN, BRITISH COLUMBIA

Project title/Titre du projet  
**6000 WILLIAM HEAD ROAD  
 METCHOSIN BRITISH COLUMBIA**

**WILLIAM HEAD INSTITUTION  
 SEWER SYSTEM UPGRADE  
 AND REHABILITATION**

Consultant Signature Only

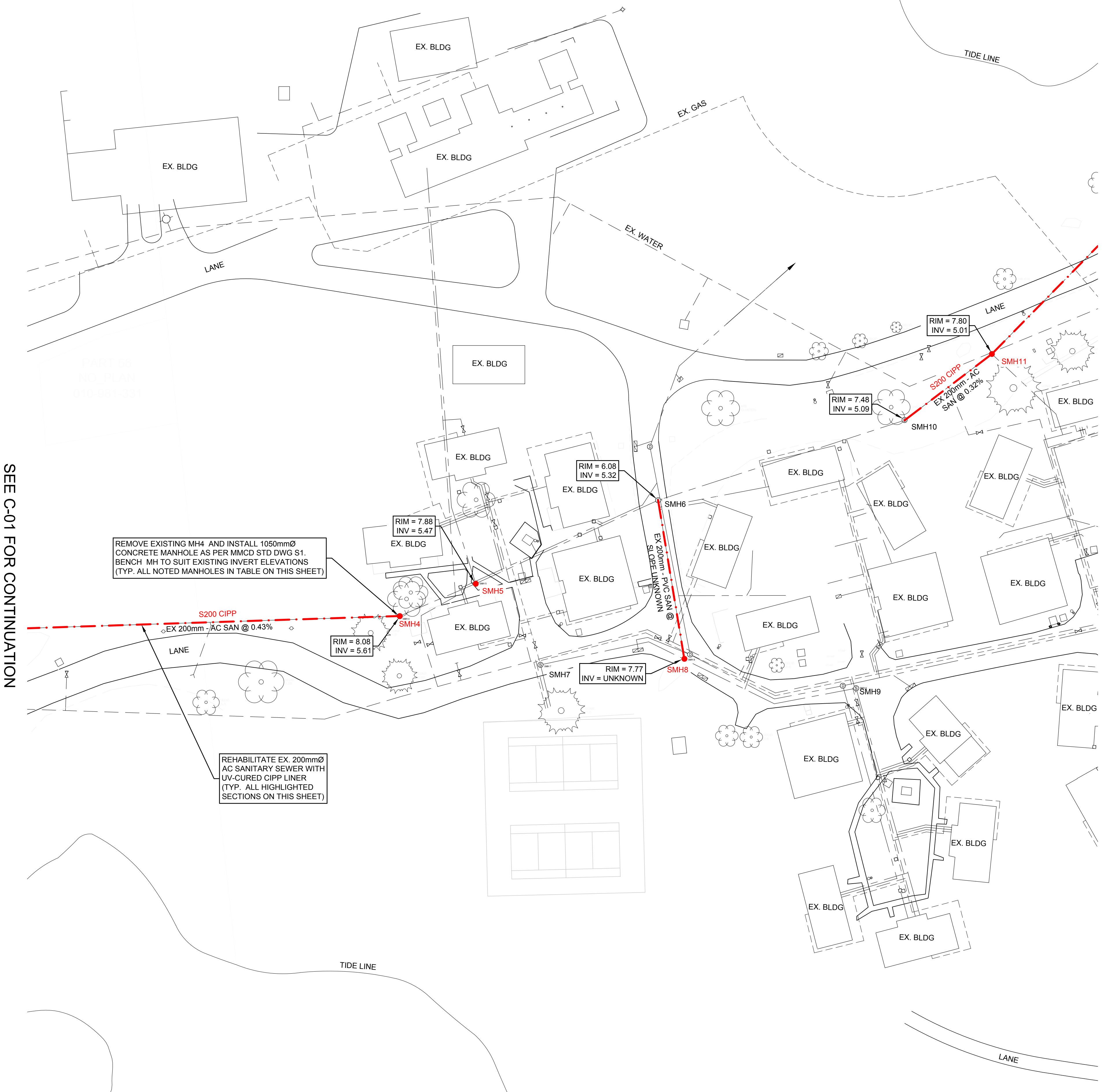
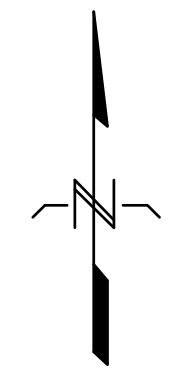
Designed by/Concept par  
 E. PAICE, P.ENG., M.ENG.  
 Drawn by/Dessine par  
 E.P./M.T./C.D.

PWGSC Project Manager/Administrateur de Projets TP/SGC  
 C.LU

Regional Manager, Architectural and Engineering Services  
 Gestionnaire régionale, Services d'architectural et de génie, TP/SGC  
 P. PAUL

Drawing title/Titre du dessin  
**SERVICING UPGRADE PLAN**

| Project No./No. du projet | Sheet/Feuille         | Revision no./La Révision no. |
|---------------------------|-----------------------|------------------------------|
| R.098006.001              | <b>C-01</b><br>1 OF 3 | <b>2</b>                     |



SEE C-01 FOR CONTINUATION

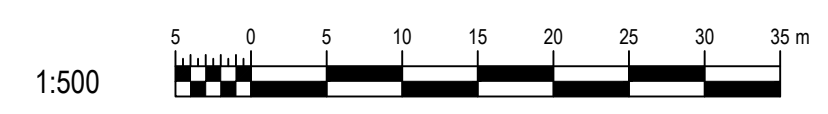
SEE C-03 FOR CONTINUATION

REMOVE EXISTING MH4 AND INSTALL 1050mmØ CONCRETE MANHOLE AS PER MMCD STD DWG S1. BENCH MH TO SUIT EXISTING INVERT ELEVATIONS (TYP. ALL NOTED MANHOLES IN TABLE ON THIS SHEET)

REHABILITATE EX. 200mmØ AC SANITARY SEWER WITH UV-CURED CIPP LINER (TYP. ALL HIGHLIGHTED SECTIONS ON THIS SHEET)

| MANHOLE REPLACEMENT SCHEDULE |        |
|------------------------------|--------|
| MANHOLE                      | SIZE   |
| SMH4                         | 1050mm |
| SMH5                         | 1050mm |
| SMH8                         | 1050mm |
| SMH11                        | 1050mm |

| CIPP LINER EXTENTS |       |        |
|--------------------|-------|--------|
| FROM               | TO    | LENGTH |
| SMH3               | SMH4  | 91.8m  |
| SMH6               | SMH8  | 36.7m  |
| SMH10              | SMH11 | 25.0m  |
| SMH11              | SMH12 | 81.2m  |



| Revision/Revision | Description/Description | Date/Date |
|-------------------|-------------------------|-----------|
| 5                 |                         |           |
| 4                 |                         |           |
| 3                 |                         |           |
| 2                 | ISSUED FOR TENDER       | 20/03/27  |
| 1                 | ISSUED FOR 90% REVIEW   | 20/02/28  |
| 0                 | ISSUED FOR 60% REVIEW   | 20/01/31  |

Client/client  
**WILLIAM HEAD INSTITUTION**  
 6000 WILLIAM HEAD ROAD  
 METCHOSIN, BRITISH COLUMBIA

Project title/Titre du projet  
 6000 WILLIAM HEAD ROAD  
 METCHOSIN BRITISH COLUMBIA

**WILLIAM HEAD INSTITUTION  
 SEWER SYSTEM UPGRADE  
 AND REHABILITATION**

Consultant Signature Only

Designed by/Concept par  
 E. PAICE, P.ENG., M.ENG.

Drawn by/Dessiné par  
 E.P./M.T./C.D.

PWSC Project Manager/Administrateur de Projets TPSGC  
 C.LU

Regional Manager, Architectural and Engineering Services  
 Gestionnaire régionale, Services d'architecture et de génie, TPSGC  
 P. PAUL

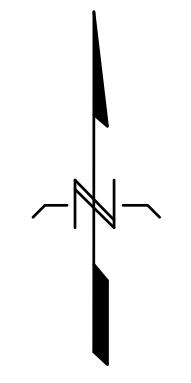
Drawing title/Titre du dessin  
**SERVICING UPGRADE PLAN**

Project No./No. du projet  
**R.098006.001**

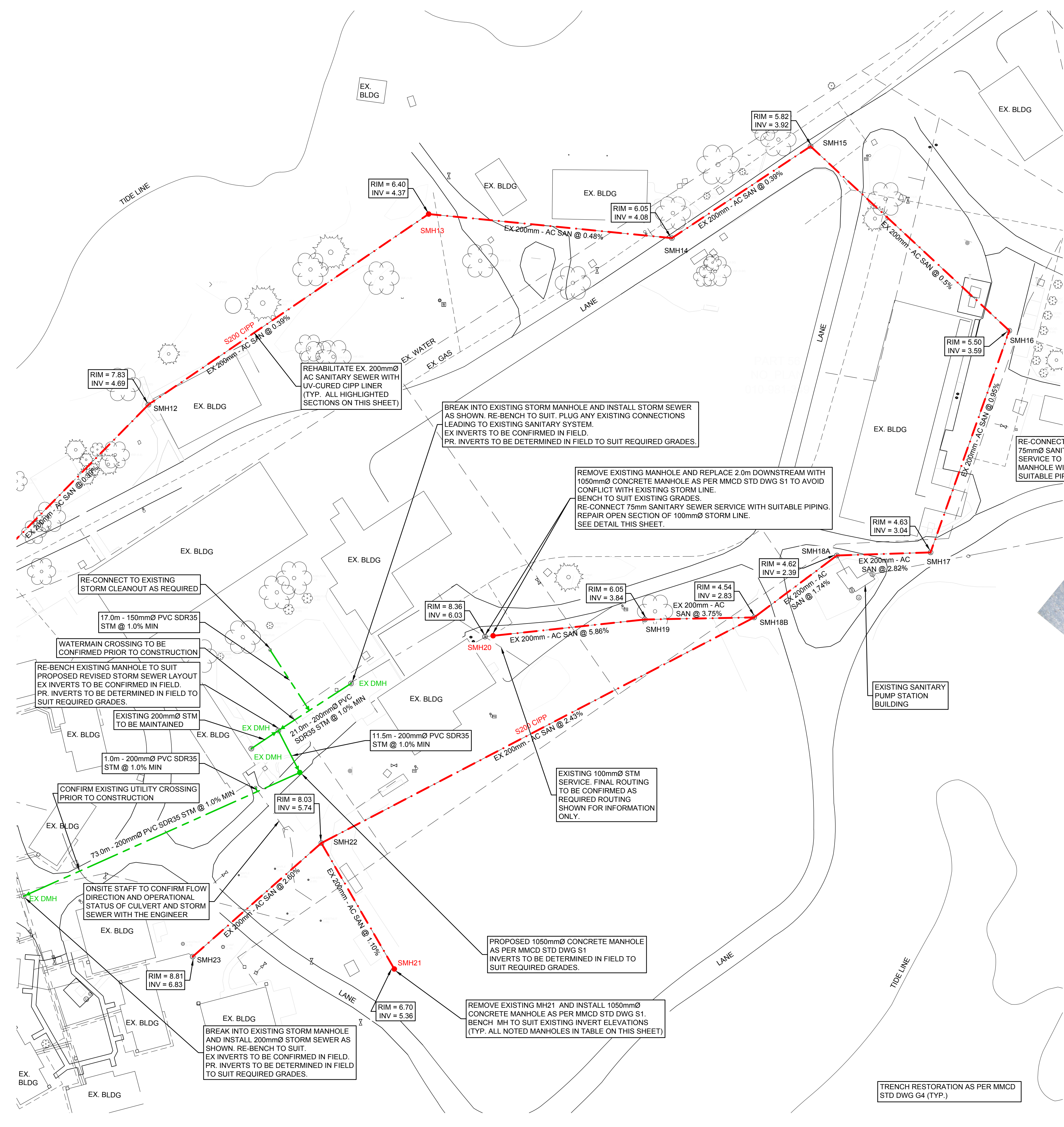
Sheet/Feuille  
**C-02**  
 2 OF 3

Revision no./La Révision no.  
**2**

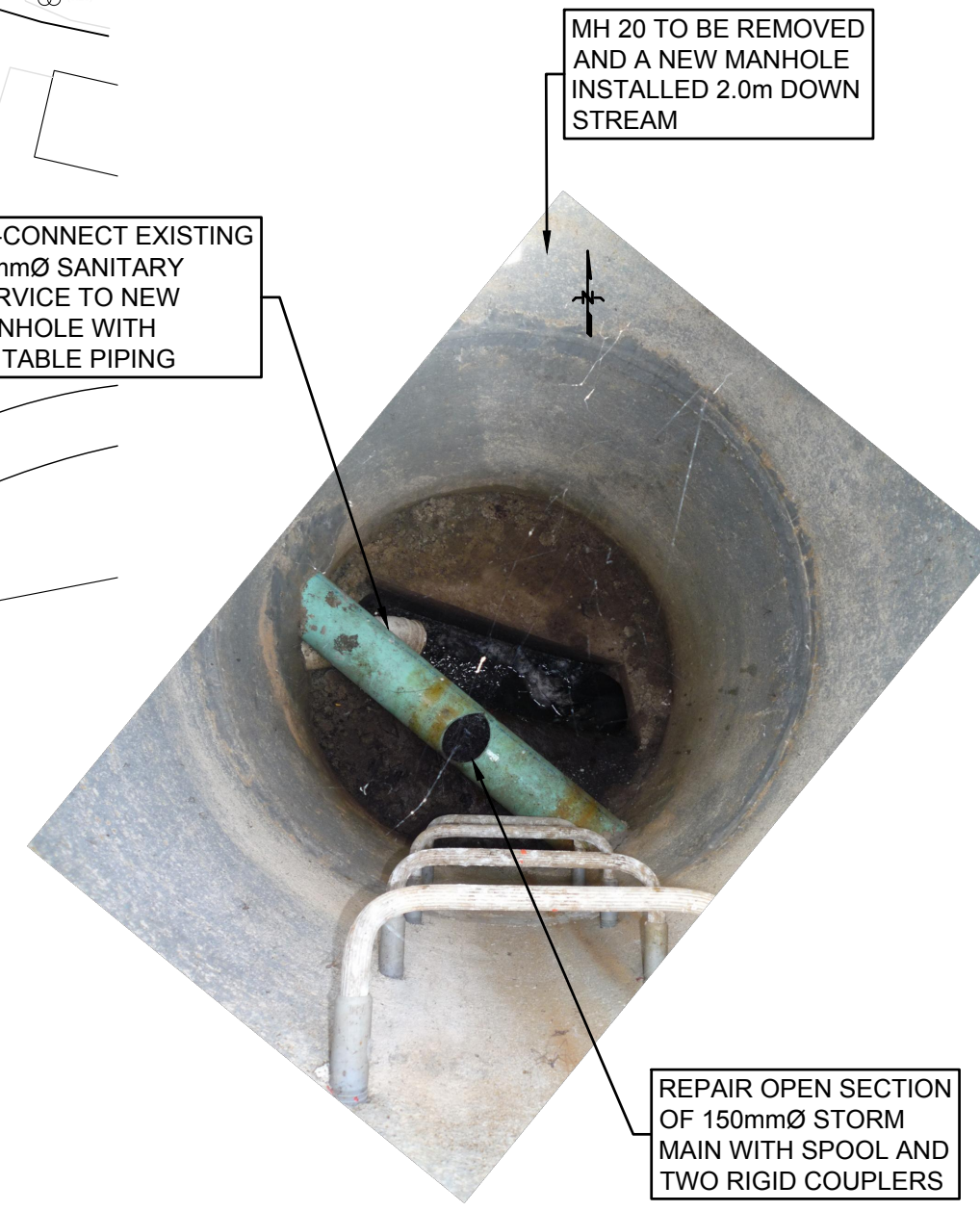




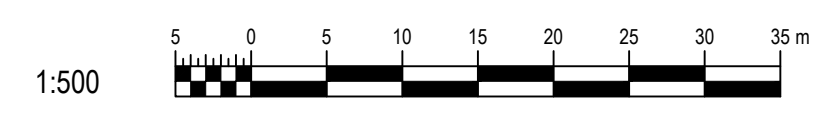
SEE C-02 FOR CONTINUATION



| MANHOLE REPLACEMENT SCHEDULE |        |
|------------------------------|--------|
| MANHOLE                      | SIZE   |
| SMH13                        | 1050mm |
| SMH20                        | 1050mm |
| SMH21                        | 1050mm |



| CIPP LINER EXTENTS |        |        |
|--------------------|--------|--------|
| FROM               | TO     | LENGTH |
| SMH12              | SMH13  | 83.0m  |
| SMH13              | SMH14  | 59.9m  |
| SMH14              | SMH15  | 40.8m  |
| SMH15              | SMH16  | 66.4m  |
| SMH16              | SMH17  | 57.7m  |
| SMH17              | SMH18A | 23.0m  |
| SMH18A             | SMH18B | 25.3m  |
| SMH18B             | SMH19  | 26.8m  |
| SMH19              | SMH20  | 37.2m  |
| SMH18B             | SMH22  | 119.6m |
| SMH21              | SMH22  | 35.7m  |
| SMH22              | SMH23  | 42.3m  |



| Revision/Revision | Description/Description | Date/Date |
|-------------------|-------------------------|-----------|
| 5                 |                         |           |
| 4                 |                         |           |
| 3                 |                         |           |
| 2                 | ISSUED FOR TENDER       | 20/03/27  |
| 1                 | ISSUED FOR 90% REVIEW   | 20/02/28  |
| 0                 | ISSUED FOR 60% REVIEW   | 20/01/31  |

Client/client  
**WILLIAM HEAD INSTITUTION**  
 6000 WILLIAM HEAD ROAD  
 METCHOSIN, BRITISH COLUMBIA

Project title/Titre du projet  
**6000 WILLIAM HEAD ROAD  
 METCHOSIN BRITISH COLUMBIA**

**WILLIAM HEAD INSTITUTION  
 SEWER SYSTEM UPGRADE  
 AND REHABILITATION**

Consultant Signature Only  
 Designed by/Concept par  
 E. PAICE, P.ENG., M.ENG.  
 Drawn by/Dessiné par  
 E.P./M.T./C.D.  
 PWGSC Project Manager/Administrateur de Projets TPSGC  
 C.LU  
 Regional Manager, Architectural and Engineering Services  
 Gestionnaire régionale, Services d'architecture et de génie, TPSGC  
 P. PAUL  
 Drawing title/Titre du dessin  
**SERVICING UPGRADE PLAN**