



RETURN BIDS TO:

RETOURNER LES SOUMISSIONS À:

Bid Receiving Public Works and Government
Services Canada/Réception des soumissions
Travaux publics et Services gouvernementaux
Canada

1713 Bedford Row

Halifax, N.S./Halifax, (N.É.)

Halifax

Nova Scotia

B3J 1T3

Bid Fax: (902) 496-5016

REQUEST FOR PROPOSAL DEMANDE DE PROPOSITION

Proposal To: Public Works and Government Services Canada

We hereby offer to sell to Her Majesty the Queen in right of Canada, in accordance with the terms and conditions set out herein, referred to herein or attached hereto, the goods, services, and construction listed herein and on any attached sheets at the price(s) set out therefor.

Proposition aux: Travaux Publics et Services Gouvernementaux Canada

Nous offrons par la présente de vendre à Sa Majesté la Reine du chef du Canada, aux conditions énoncées ou incluses par référence dans la présente et aux annexes ci-jointes, les biens, services et construction énumérés ici sur toute feuille ci-annexée, au(x) prix indiqué(s).

Comments - Commentaires

Vendor/Firm Name and Address

Raison sociale et adresse du

fournisseur/de l'entrepreneur

Issuing Office - Bureau de distribution

Atlantic Region Acquisitions/Région de l'Atlantique
Acquisitions

1713 Bedford Row

Halifax, N.S./Halifax, (N.É.)

Halifax

Nova Scot

B3J 1T3

Title - Sujet ISC Maritime Centre Office Seating	
Solicitation No. - N° de l'invitation EB129-220572/A	Date 2021-07-15
Client Reference No. - N° de référence du client EB129-22-0572	
GETS Reference No. - N° de référence de SEAG PW-\$HAL-207-11327	
File No. - N° de dossier HAL-1-87057 (207)	CCC No./N° CCC - FMS No./N° VME
Solicitation Closes - L'invitation prend fin at - à 02:00 PM Atlantic Daylight Saving Time ADT on - le 2021-08-03 Heure Avancée de l'Atlantique HAA	
F.O.B. - F.A.B. Plant-Usine: <input type="checkbox"/> Destination: <input checked="" type="checkbox"/> Other-Autre: <input type="checkbox"/>	
Address Enquiries to: - Adresser toutes questions à: Grieve, Bronwen	Buyer Id - Id de l'acheteur hal207
Telephone No. - N° de téléphone (902) 943-2394 ()	FAX No. - N° de FAX (902) 496-5016
Destination - of Goods, Services, and Construction: Destination - des biens, services et construction: PWGCS/TPSGC DOMINION PUBLIC BUILDING 1713 BEDFORD ROW, 2ND FLOOR HALIFAX NOVA SCOTIA B3J 3C9 CANADA	

Instructions: See Herein

Instructions: Voir aux présentes

Delivery Required - Livraison exigée See Herein – Voir ci-inclus	Delivery Offered - Livraison proposée
Vendor/Firm Name and Address Raison sociale et adresse du fournisseur/de l'entrepreneur	
Telephone No. - N° de téléphone Facsimile No. - N° de télécopieur	
Name and title of person authorized to sign on behalf of Vendor/Firm (type or print) Nom et titre de la personne autorisée à signer au nom du fournisseur/ de l'entrepreneur (taper ou écrire en caractères d'imprimerie)	
Signature	Date

TABLE OF CONTENTS

PART 1 - GENERAL INFORMATION	2
1.1 SECURITY REQUIREMENTS	2
1.2 REQUIREMENT	2
1.3 GENERAL OR PROCUREMENT STRATEGY FOR ABORIGINAL BUSINESS (PSAB)	2
1.4 DEBRIEFINGS	2
1.5 EPOST CONNECT SERVICE	2
PART 2 - BIDDER INSTRUCTIONS	3
2.1 STANDARD INSTRUCTIONS, CLAUSES AND CONDITIONS	3
2.2 SUBMISSION OF BIDS	3
2.3 ENQUIRIES - BID SOLICITATION	3
2.4 BID CHALLENGE AND RECOURSE MECHANISMS	4
PART 3 - BID PREPARATION INSTRUCTIONS	5
3.1 BID PREPARATION INSTRUCTIONS	5
PART 4 - EVALUATION PROCEDURES AND BASIS OF SELECTION	7
4.1 EVALUATION PROCEDURES	7
4.2 BASIS OF SELECTION	8
PART 5 - CERTIFICATIONS AND ADDITIONAL INFORMATION	9
5.1 CERTIFICATIONS REQUIRED WITH THE BID	9
5.2 CERTIFICATIONS PRECEDENT TO CONTRACT AWARD AND ADDITIONAL INFORMATION	9
PART 6 - RESULTING CONTRACT CLAUSES	11
6.1 SECURITY REQUIREMENTS	11
6.2 REQUIREMENT	11
6.3 STANDARD CLAUSES AND CONDITIONS	11
6.4 TERM OF CONTRACT	12
6.5 AUTHORITIES	13
6.6 PAYMENT	14
6.7 INVOICING INSTRUCTIONS	14
6.8 CERTIFICATIONS AND ADDITIONAL INFORMATION	14
6.9 APPLICABLE LAWS	15
6.10 PRIORITY OF DOCUMENTS	15
6.11 ACCESS TO FACILITIES AND EQUIPMENT	15
6.12 CANADA'S FACILITIES TO ACCOMMODATE THE DELIVERY	15
6.13 STANDARD FINISHES	15
6.14 SACC MANUAL CLAUSES	16
ANNEX A	17
REQUIREMENT	17
ANNEX B	23
BASIS OF PAYMENT	23

PART 1 - GENERAL INFORMATION

1.1 Security Requirements

There is no security associated with this requirement.

Contractor may be escorted; possession of a security clearance not required.

1.2 Requirement

This solicitation is issued pursuant to the Supplier's Furniture for Office Seating Supply Arrangement (SA) that forms part of the series of SAs issued by PWGSC with the number E60PQ-120001/PQ. The terms and conditions in the Supplier's SA apply to and form part of this solicitation. Bidders who submit a bid agree to be bound by those terms and conditions as well as the terms and conditions in this solicitation.

The requirement is detailed under Annex A of the resulting contract clauses.

1.3 General or Procurement Strategy for Aboriginal Business (PSAB)

This requirement is a:

☐ General Stream Procurement

The requirement is subject to all applicable trade agreements as identified in the Notice of Proposed Procurement (NPP).

☒ PSAB Stream Procurement

This procurement is set aside under the federal government Procurement Strategy for Aboriginal Business. For more information on Aboriginal business requirements of the Set-aside Program for Aboriginal Business, refer to [Annex 9.4](#) of the Supply Manual.

This procurement is set aside from the international trade agreements under the provision each has for measures with respect to Aboriginal peoples or for set-asides for small and minority businesses.

Further to Article 800 of the Canadian Free Trade Agreement (CFTA), CFTA does not apply to this procurement.

1.4 Debriefings

Bidders may request a debriefing on the results of the bid solicitation process. Bidders should make the request to the Contracting Authority within 15 working days from receipt of the results of the bid solicitation process. The debriefing may be in writing, by telephone or in person.

1.5 epost Connect service

This bid solicitation allows Bidders to use the epost Connect service provided by Canada Post Corporation to transmit their bid electronically. Bidders must refer to Part 2 entitled Bidder Instructions, and Part 3 entitled Bid Preparation Instructions, of the bid solicitation, for further information.

PART 2 - BIDDER INSTRUCTIONS

2.1 Standard Instructions, Clauses and Conditions

All instructions, clauses and conditions identified in the bid solicitation by number, date and title are set out in the [Standard Acquisition Clauses and Conditions Manual](https://buyandsell.gc.ca/policy-and-guidelines/standard-acquisition-clauses-and-conditions-manual) (<https://buyandsell.gc.ca/policy-and-guidelines/standard-acquisition-clauses-and-conditions-manual>) issued by Public Works and Government Services Canada.

Bidders who submit a bid agree to be bound by the instructions, clauses and conditions of the bid solicitation and accept the clauses and conditions of the resulting contract.

The [2003](#) ([insert date](#)) Standard Instructions - Goods or Services - Competitive Requirements, are incorporated by reference into and form part of the bid solicitation.

Subsection 3.a) of Section 01, Integrity Provisions - Bid of the Standard Instructions [2003](#) incorporated by reference above is deleted in its entirety and replaced with the following:

- a. at the time of submitting an arrangement under the Request for Supply Arrangements (RFS), the Bidder has already provided a list of names, as requested under the [Ineligibility and Suspension Policy](#). During this procurement process, the Bidder must immediately inform Canada in writing of any changes affecting the list of names.

2.2 Submission of Bids

Bids must be submitted only to the Public Works and Government Services Canada Bid Receiving Unit specified below by the date and time indicated on page 1 of the bid solicitation:

Bid Receiving Public Works and Government Services Canada / Réception des soumissions
Travaux publics et services gouvernementaux
1713 Bedford Row
Halifax, NS B3J 1T3

Email for epost Connect:

TPSGC.RARceptionSoumissionsNE-ARBidReceivingNS.PWGSC@tpsgc-pwgsc.gc.ca

Note: Bids will not be accepted if emailed directly to this email address. This email address is to be used to open an epost Connect conversation, as detailed in Standard Instructions [2003](#), or to send bids through an epost Connect message if the bidder is using its own licensing agreement for epost Connect.

Facsimile number: (902) 496-5016

2.3 Enquiries - Bid Solicitation

All enquiries must be submitted in writing to the Contracting Authority no later than five (5) calendar days before the bid closing date. Enquiries received after that time may not be answered.

Bidders should reference as accurately as possible the numbered item of the bid solicitation to which the enquiry relates. Care should be taken by Bidders to explain each question in sufficient detail in order to enable Canada to provide an accurate answer. Technical enquiries that are of a proprietary nature must be clearly marked "proprietary" at each relevant item. Items identified as "proprietary" will be treated as such except where Canada determines that the enquiry is not of a proprietary nature. Canada may edit the question(s) or may request that the Bidder do so, so that the proprietary nature of the question(s) is eliminated, and the enquiry can be answered to all Bidders. Enquiries not submitted in a form that can be distributed to all Bidders may not be answered by Canada.

2.4 Bid Challenge and Recourse Mechanisms

- (a) Several mechanisms are available to potential suppliers to challenge aspects of the procurement process up to and including contract award.
- (b) Canada encourages suppliers to first bring their concerns to the attention of the Contracting Authority. Canada's [Buy and Sell](#) website, under the heading "[Bid Challenge and Recourse Mechanisms](#)" contains information on potential complaint bodies such as:
- Office of the Procurement Ombudsman (OPO)
 - Canadian International Trade Tribunal (CITT)
- (c) Suppliers should note that there are **strict deadlines** for filing complaints, and the time periods vary depending on the complaint body in question. Suppliers should therefore act quickly when they want to challenge any aspect of the procurement process.

PART 3 - BID PREPARATION INSTRUCTIONS

3.1 Bid Preparation Instructions

- If the Bidder chooses to submit its bid electronically, Canada requests that the Bidder submits its bid in accordance with section 08 of the 2003 standard instructions. The epost Connect system has a limit of 1GB per single message posted and a limit of 20GB per conversation.

The bid must be gathered per section and separated as follows:

Section I: Technical Bid
Section II: Financial Bid
Section III: Certifications and Additional Information

- If the Bidder chooses to submit its bid in hard copies, Canada requests that the Bidder submits its bid in separately bound sections as follows:

Section I: Technical Bid (1 hard copy)
Section II: Financial Bid (1 hard copy)
Section III: Certifications and Additional Information (1 hard copy)

Prices must appear in the Financial Bid only. No prices must be indicated in any other section of the bid.

Canada requests that Bidders follow the format instructions described below in the preparation of hard copy of their bid:

- (a) use 8.5 x 11 inch (216 mm x 279 mm) paper;
- (b) use a numbering system that corresponds to the bid solicitation.

In April 2006, Canada issued a policy directing federal departments and agencies to take the necessary steps to incorporate environmental considerations into the procurement process [Policy on Green Procurement](https://www.tbs-sct.gc.ca/pol/doc-eng.aspx?id=32573) (<https://www.tbs-sct.gc.ca/pol/doc-eng.aspx?id=32573>). To assist Canada in reaching its objectives, Bidders should:

- 1) use 8.5 x 11 inch (216 mm x 279 mm) paper containing fibre certified as originating from a sustainably-managed forest and containing minimum 30% recycled content; and
- 2) use an environmentally-preferable format including black and white printing instead of colour printing, printing double sided/duplex, using staples or clips instead of cerlox, duotangs or binders.

Section I: Technical Bid

In their Technical Bid, Bidders should explain and demonstrate how they propose to meet the requirements and how they will carry out the Work.

Section II: Financial Bid

Bidders must submit their Financial Bid in accordance with the Basis of Payment.

3.1.1 Exchange Rate Fluctuation

[C3011T](#) (2013-11-06), Exchange Rate Fluctuation

Solicitation No. - N° de l'invitation
EB129-220572/A
Client Ref. No. - N° de réf. du client

Amd. No. - N° de la modif.
File No. - N° du dossier

Buyer ID - Id de l'acheteur
ha1207
CCC No./N° CCC - FMS No./N° VME

Section III: Certifications and Additional Information

Bidders must submit the certifications and additional information required under Part 5.

PART 4 - EVALUATION PROCEDURES AND BASIS OF SELECTION

4.1 Evaluation Procedures

- (a) Bids will be assessed in accordance with the entire requirement of the bid solicitation including the technical and financial evaluation criteria.
- (b) An evaluation team composed of representatives of Canada will evaluate the bids.

4.1.1 Technical Evaluation

4.1.1.1 Mandatory Technical Evaluation Criteria

MTC NOTE: Any media (printer matter, CD, DVD, soft copy, or other) submitted must be readable by Canada.

Mandatory Technical Criteria (MTC)		
Criteria #		MET/ NOT MET & COMMENTS
MTC 1	<p>The Bidder must provide a line drawing and/or a 3-D with dimensions of product "A1, A2 & A3" as described at Annex A of this solicitation.</p> <p>To demonstrate compliance with MTC 1, the Bidder must submit a drawing and/or 3-D of product "A1, A2 & A3" that substantiates, at a minimum:</p> <ul style="list-style-type: none">- Dimensions and functions as outlined in Annex A, Rows B to G	
MTC 2	<p>The Bidder must provide a line drawing and/or a 3-D with dimensions of product "A1" as described at Annex A of this solicitation.</p> <ul style="list-style-type: none">- Back height must be a minimum of 24" h and height adjustable <p>To demonstrate compliance with MTC 1, the Bidder must submit a drawing and/or 3-D of product "A1, A2 & A3" that substantiates, at a minimum:</p>	
MTC 3	<p>The Bidder must provide documentation or link outlining that the product finish options meet the requirements for product "A1, A2, A3" as described at Annex A of this solicitation.</p>	

4.1.2 Financial Evaluation

SACC Manual Clause [A0220T](#) (2014-06-26), Evaluation of Price-Bid

4.2 Basis of Selection

A bid must comply with the requirements of the bid solicitation and meet all mandatory technical evaluation criteria to be declared responsive. The responsive bid with the lowest evaluated price will be recommended for award of a contract.

PART 5 – CERTIFICATIONS AND ADDITIONAL INFORMATION

Bidders must provide the required certifications and additional information to be awarded a contract.

The certifications provided by Bidders to Canada are subject to verification by Canada at all times. Unless specified otherwise, Canada will declare a bid non-responsive, or will declare a contractor in default if any certification made by the Bidder is found to be untrue whether made knowingly or unknowingly, during the bid evaluation period or during the contract period.

The Contracting Authority will have the right to ask for additional information to verify the Bidder's certifications. Failure to comply and to cooperate with any request or requirement imposed by the Contracting Authority will render the bid non-responsive or constitute a default under the Contract.

5.1 Certifications Required with the Bid

Bidders must submit the following duly completed certifications as part of their bid.

5.1.1 Integrity Provisions - Additional Information

Integrity checks were performed on each Supplier at time of issuance of their respective Supply Arrangement (SA). By submitting a bid, the Bidder certifies that the Bidder and its Affiliates are in compliance with the provisions as stated in Section 01 Integrity Provisions - Bid of Standard Instructions listed above.

5.1.2 Product Conformance

By submitting a bid, the Bidder certifies that all goods proposed conform, and will continue to conform throughout the period of the contract, to the requirement detailed under Annex A and to the Specifications of the series of SAs issued by PWGSC with the number E60PQ-120001/PQ.

5.1.3 Continuance of Certifications

The Bidder certifies that by submitting a bid in response to this solicitation, the Bidder, and any of the Bidder's members if the Bidder is a Joint Venture, continues to comply with all of the certifications submitted with its arrangement to become qualified as part of the series of SAs issued by PWGSC with the number E60PQ-120001/PQ.

5.2 Certifications Precedent to Contract Award and Additional Information

The certifications and additional information listed below should be submitted with the bid, but may be submitted afterwards. If any of these required certifications or additional information is not completed and submitted as requested, the Contracting Authority will inform the Bidder of a time frame within which to provide the information. Failure to provide the certifications or the additional information listed below within the time frame provided will render the bid non-responsive.

5.2.1 Federal Contractors Program for Employment Equity - Bid Certification

By submitting a bid, the Bidder certifies that the Bidder, and any of the Bidder's members if the Bidder is a Joint Venture, is not named on the Federal Contractors Program (FCP) for employment equity "FCP Limited Eligibility to Bid" list available at the bottom of the page of the [Employment and Social Development Canada \(ESDC\) - Labour's](https://www.canada.ca/en/employment-social-development/canada/esdc/labour's) website (<https://www.canada.ca/en/employment-social-development/programs/employment-equity/federal-contractor-program.html#>).

Canada will have the right to declare a bid non-responsive if the Bidder, or any member of the Bidder if the Bidder is a Joint Venture, appears on the "FCP Limited Eligibility to Bid" list at the time of contract award.

PART 6 - RESULTING CONTRACT CLAUSES

The following clauses and conditions apply to and form part of any contract resulting from the bid solicitation.

6.1 Security Requirements

6.1.1 There is no security requirement applicable to the Contract.

Contractor may be escorted; possession of security clearance not required.

Contractor personnel MAY NOT ENTER NOR PERFORM WORK ON sites where PROTECTED or CLASSIFIED information or assets are kept, without an escort provided by the department or agency for which the work is being performed.

6.2 Requirement

6.2.1 The Contractor must provide office seating in accordance with the Requirement at Annex A.

This contract is issued against the Supplier's Furniture for Office Seating Supply Arrangement (SA) that forms part of the series of SAs issued by PWGSC with the number E60PQ-120001/PQ. The terms and conditions in the Supplier's SA apply to and form part of this contract.

6.2.2 This requirement is a

☐ General Stream

☒ PSAB Stream

6.3 Standard Clauses and Conditions

All clauses and conditions identified in the Contract by number, date and title are set out in the [Standard Acquisition Clauses and Conditions Manual](https://buyandsell.gc.ca/policy-and-guidelines/standard-acquisition-clauses-and-conditions-manual) (<https://buyandsell.gc.ca/policy-and-guidelines/standard-acquisition-clauses-and-conditions-manual>) issued by Public Works and Government Services Canada.

6.3.1 General Conditions

[2010A](#) (2020-05-28), General Conditions - Goods (Medium Complexity), apply to and form part of the Contract.

Section 09 - Warranty, is amended as follows:

At Sub-section 1.

Deleted: "The warranty period will be 12 months."

Inserted: "The warranty period will be 10 years with the exception of user adjustable components, which will have a warranty of 5 years."

At Sub-section 2.

Deleted: In its entirety

Inserted: as follows:

2. The Contractor must pay the transportation cost associated with returning the Work or any part of the Work to the Contractor's plant for replacement, repair or making good. The Contractor must also pay the transportation cost associated

with forwarding the replacement or returning the Work or part of the Work when rectified to the delivery point specified in the Contract or to another location as directed by Canada. If, in the opinion of Canada, it is not expedient to remove the Work from its location, the Contractor must carry out any necessary repair or making good of the Work at that location. In such cases, the Contractor will be responsible for all Costs (including travel and living expenses) incurred in so doing, Canada will not reimburse these Costs." All other provisions of the warranty section remain in effect.

Section 16 - Interest on Overdue Accounts

This provision will not apply to payments made by credit card at point of sale. This provision does not apply to Suppliers whose SAs do not include the provision for payment by credit card

6.4 Term of Contract

6.4.1 Period of the Contract

The period of the Contract is from date of Contract to the completion and acceptance of the Work.

6.4.2 Delivery Date

All the deliverables must be received on or before the date(s) indicated at Annex B.

Standard Lead time is between 6-10 weeks for furniture delivery and installation.

6.4.3 Shipping Instructions

If delivery is required: Goods must be delivered DDP (Destination as specified in contract) Incoterms® rules, Applicable Taxes extra.

In addition to the above, the Contractor is to unload and move the goods to the delivery location(s) specified in the contract.

6.4.4 Delivery and Installation Points Location(s)

Delivery and Installation of the requirement will be made at the point(s) specified at Annex B of the Contract.

The Project Authority (PA) will provide the Supplier the authority to proceed prior to the finalized delivery and installation date taking into consideration the delivery and installation time provided by the Supplier. Canada will not be responsible if the Supplier chooses to proceed without the PA authorization.

6.5 Authorities

6.5.1 Contracting Authority

The Contracting Authority for the Contract is:

Name: Bronwen Grieve
Title: Supply Officer
Public Works and Government Services Canada
Acquisitions Branch
Address: 1713 Bedford Row
Halifax, NS B3J 1T3

Telephone: 902-943-2394

E-mail address: bronwen.grieve@tpsgc-pwgsc.gc.ca

The Contracting Authority is responsible for the management of the Contract and any changes to the Contract must be authorized in writing by the Contracting Authority. The Contractor must not perform work in excess of or outside the scope of the Contract based on verbal or written requests or instructions from anybody other than the Contracting Authority.

6.5.2 Project Authority

The Project Authority for the Contract is: *(to be completed at contract award)*

Name:	
Title:	
Department/Agency/Crown Corporation:	
Address:	
Telephone No.:	
E-mail address:	

The Project Authority is the representative of the department or agency for whom the Work is being carried out under the Contract including the provision to approve the authority to proceed for delivery and installation and is responsible for all matters concerning the technical content of the Work under the Contract. Technical matters may be discussed with the Project Authority, however the Project Authority has no authority to authorize changes to the scope of the Work. Changes to the scope of the Work can only be made through a contract amendment issued by the Contracting Authority.

In addition, the PA is also responsible for ensuring that the Supplier's employees and subcontractors requiring access to the site adhere to the allocated time for the Supplier to access the site to deliver and install the furniture in accordance with the master schedule held by the General Contractor (a representative of Canada or a service provider(s) under contract with the Government of Canada).

6.5.3 Contractor's Representative

The Contractors Representative for the Contract is:

Name: _____
Title: _____

Telephone: _____
E-mail address: _____

6.6 Payment

6.6.1 Basis of Payment

In consideration of the Contractor satisfactorily completing all of its obligations under the Contract, the Contractor will be paid a firm price, as specified in Annex B – Basis of Payment, for a cost of \$_____ **(to be filled in only at contract award)**. Customs duties are included and Applicable Taxes are extra.

Canada will not pay the Contractor for any design changes, modifications or interpretations of the Work, unless they have been approved, in writing, by the Contracting Authority before their incorporation into the Work.

6.6.2 Method of Payment

SACC Manual clause [H1000C](#) (2008-05-12) Single Payment

6.6.3 Electronic Payment of Invoices – Contract

Canada may pay invoices by credit card if the Contractor's SA indicates acceptance of such payment. Refer to Supplier's SA.

6.7 Invoicing Instructions

The Contractor must submit invoices in accordance with the section entitled "Invoice Submission" of the general conditions.

Invoices must be distributed as follows:

- a. The original and one (1) copy must be forwarded to the address shown on page 1 of the Contract for certification and payment.
- b. One (1) copy must be forwarded to the Contracting Authority identified under the section entitled "Authorities" of the Contract.

6.8 Certifications and Additional Information

6.8.1 Compliance

Unless specified otherwise, the continuous compliance with the certifications provided by the Contractor in its bid or precedent to contract award, and the ongoing cooperation in providing additional information are conditions of the Contract and failure to comply will constitute the Contractor in default. Certifications are subject to verification by Canada during the entire period of the Contract.

6.8.3 SACC Manual Clauses

SACC Manual clause A3000C (2014-11-27), Aboriginal Business Certification

6.9 Applicable Laws

As set out in the article "Applicable Laws" in Part 6A of the SA.

6.10 Priority of Documents

If there is a discrepancy between the wording of any documents that appear on the list, the wording of the document that first appears on the list has priority over the wording of any document that subsequently appears on the list.

- a) the Articles of Agreement of the SA E60PQ-120001;
- b) the Articles of this Agreement;
- c) the general conditions 2010A (2020-05-28)– General Conditions: Goods (Medium Complexity);
- d) Annex A, Requirement;
- e) Annex B, Basis of Payment;
- f) the Contractor's bid dated _____

6.11 Access to Facilities and Equipment

Canada's facilities, equipment, documentation and personnel are not automatically at the disposal of the Contractor. If access to government premises, computer systems (micro computer network), working space, telephones, terminals, documentation and personnel for consultation is required by the Contractor to perform the Work, the Contractor must advise the Contracting Authority of the need for such access in a timely fashion. If the Contractor's request for access is approved by Canada and arrangements are made to provide access to the Contractor, the Contractor, its subcontractors, agents and employees must comply with all the conditions applicable at the Work site. The Contractor must further ensure that the facilities and equipment are used solely for the performance of the Contract.

6.12 Canada's Facilities to Accommodate the Delivery

The Supplier's employees and subcontractors requiring access to the site must adhere to the health and safety plans established for the site, in addition to any laws in effect in the jurisdiction where the work is being performed.

During the period of the contract, a representative of Canada or a service provider(s) under contract with the Government of Canada may request the list of employees and subcontractors requiring access to the site to perform the work and their security statuses. Information must be provided in the timeframe prescribed in order to ensure that the supply, delivery and installation of the furniture aligns with the master schedule

6.13 Standard finishes

The Identified User (IU) will consult the Supplier's Website identified in Part 6A of the SA to view the available finishes.

Within ten business days of the contract award, the Project Authority will provide the Contractor with a written notice of Canada's finish choices for each of the product(s) in Annex A.

The Contractor will deliver the products corresponding to Canada's choice of specific finishes(s). No additional charge will be applied to Canada.

6.14 SACC Manual Clauses

SACC Manual clause [B7500C](#) (2006-06-16) Excess Goods
SACC Manual clause [A9068C](#) (2010-01-11) Government Site Regulations
SACC Manual clause [B1501C](#) (2018-06-21) Electrical Equipment
SACC Manual clause [B4003T](#) (2011-05-16) Canadian General Standards Board – Standards
SACC Manual clause [B6802C](#) (2007-11-30) Government Property
SACC Manual clause [G1005C](#) (2016-01-28) Insurance - No Specific Requirement

ANNEX A

REQUIREMENT



Table A1:

CHAIR TYPE	QTY:29
WC1	
<input checked="" type="checkbox"/> Rotary Chair (up to 275 lbs) <input type="checkbox"/> Rotary Chair large occupant (up to 400 lbs) <input type="checkbox"/> Rotary Stool with backrest	

IMPORTANT:

Canada may request additional information to confirm criteria prior to contract award within a time period specified by the Identified User (IU). Suppliers must provide products that are compliant to the selected "■" Requirement Choices

	Criteria <i>Instructions</i>	Requirement Choices	
A	Headrest <i>choose only 1</i>	<input type="checkbox"/> Yes – Adjustable and Removable (if applicable, indicate type of adjustment in additional criteria below) <i>Recommended with Standard Back Height</i> <input checked="" type="checkbox"/> No	
B	Backrest Height <i>choose only 1</i>	<input checked="" type="checkbox"/> Standard = height between 450 mm (17.7 in.) to 660 mm (26.0 in.) <input type="checkbox"/> High = height greater than 660 mm (26.0 in.) <input type="checkbox"/> No preference = minimum height of 450mm (17.0 in.)	
	Backrest Profile <i>choose only 1</i>	<input checked="" type="checkbox"/> No preference (It is recommended to select "no preference" as profiles do not affect functionality of chair). <input type="checkbox"/> Other = _____	
C	Lumbar Support <i>choose ALL that are acceptable</i>	<u>Adjustable</u> <input type="checkbox"/> Up/Down = min. 50 mm (2.0 in.) height adjustment between 150mm (5.9 in.) to 250 mm (9.8 in.) <input checked="" type="checkbox"/> Other = Must have up/down and in/out depth adjustment	
		<input type="checkbox"/> Fixed = between 150 mm (5.9 in.) to 250 mm (9.8 in.) above seat	
D	Armrests <i>choose ALL that are acceptable</i>	<u>Adjustable</u> <input checked="" type="checkbox"/> Height adjustable = min. 63 mm (2.5 in.) adjustment between 176 mm (6.9 in.) to 289 mm (11.4 in.) <input checked="" type="checkbox"/> Width adjustable = within the range of 443 mm (17.0 in.) to 493 mm (19.4 in.) <input checked="" type="checkbox"/> Pivot adjustable = min. 20 degrees inward and min. 10 degrees outward	
		<input type="checkbox"/> Fixed = height range between 200 mm (7.9 in.) to 250 mm (9.8 in.)	
		<input type="checkbox"/> None	
E	Seat Depth <i>choose ALL that are acceptable</i>	<input checked="" type="checkbox"/> Adjustable = min. 50 mm (2.0 in.) adjustment within the range 420 mm (16.5 in.) to 460 mm (18.1 in.)	
		<input type="checkbox"/> Fixed	<input type="checkbox"/> Shallow = 380 mm (15.0 in.) to 420 mm (16.5 in.) <input type="checkbox"/> Medium = greater than 420 mm (16.5 in.) to 460 mm (18.1 in.) <input type="checkbox"/> Deep = greater than 460 mm (18.1 in.)

F	Seat Width	<u>Refer to chair type above</u> Rotary chairs and stools = min. width of 450 mm (17.7in.) Rotary Large Occupant models = min. width of 560 mm (22.0 in.)	
G	Seat Height choose ALL that are acceptable	Rotary Chair	<input checked="" type="checkbox"/> Adjustable <input type="checkbox"/> Low = includes 376 mm (14.8 in.) to 439 mm (17.3 in.) <input type="checkbox"/> Other = _____ <input type="checkbox"/> Fixed = between 417 mm (16.4 in.) to 512 mm (20.2 in.)
		Rotary Stool with backrest	<input type="checkbox"/> Adjustable = includes range from 580 mm (23 in.) to 840 mm (33 in.) <input type="checkbox"/> Fixed = equal or greater than 670 mm (27.5 in)
H	Tilt Mechanism choose only 1	<input checked="" type="checkbox"/> Tilt Mechanism seat and backrest adjust together in a ratio that falls within $\geq 1:1$ (includes both Synchro-Tilt and Unison Tilt) <input type="checkbox"/> Tilt Independently seat and backrest adjust independently of each other <input type="checkbox"/> No preference	
I	Seat and Backrest Locks choose ALL that are acceptable	<input type="checkbox"/> Setup Position = chair locks or stops at one position with seat flat and backrest straight <input checked="" type="checkbox"/> Multiple Positions = chair locks or stops at multiple positions (including setup position)	
J	Casters	<input checked="" type="checkbox"/> carpet <input type="checkbox"/> hard surface	
L	Foot Ring	Standard with stool models only	
	Finishes (Upholstery / Non-Upholstery) choose ALL that are acceptable	Backrest	<input type="checkbox"/> Upholstery <input type="checkbox"/> Other = _____ <input checked="" type="checkbox"/> Breathable material (Mesh)
		Seat	<input type="checkbox"/> Upholstery <input type="checkbox"/> Other = _____ <input checked="" type="checkbox"/> Breathable material (Mesh)
	Additional Criteria:	➤ Mesh back and seating fabric must be available in at least 5 different colours	



Table A2:

CHAIR TYPE CC1	QTY: 5
<input checked="" type="checkbox"/> Rotary Chair (up to 275 lbs) <input type="checkbox"/> Rotary Chair large occupant (up to 400 lbs) <input type="checkbox"/> Rotary Stool with backrest	

IMPORTANT:

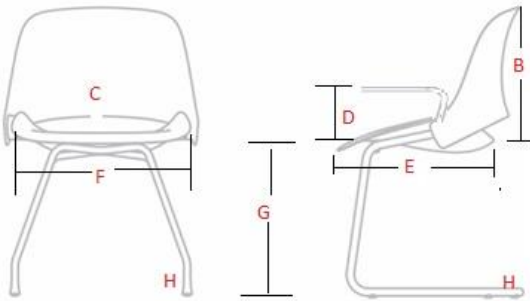
Canada may request additional information to confirm criteria prior to contract award within a time period specified by the Identified User (IU).

Suppliers must provide products that are compliant to the selected "■" **Requirement Choices**

	Criteria <i>Instructions</i>	Requirement Choices
A	Headrest <i>choose only 1</i>	<input type="checkbox"/> Yes – Adjustable and Removable (if applicable, indicate type of adjustment in additional criteria below) Recommended with Standard Back Height <input checked="" type="checkbox"/> No
B	Backrest Height <i>choose only 1</i>	<input checked="" type="checkbox"/> Standard = height between 450 mm (17.7 in.) to 660 mm (26.0 in.) <input type="checkbox"/> High = height greater than 660 mm (26.0 in.) <input type="checkbox"/> No preference = minimum height of 450mm (17.0 in.)
	Backrest Profile <i>choose only 1</i>	<input checked="" type="checkbox"/> No preference (It is recommended to select "no preference" as profiles do not affect functionality of chair). <input type="checkbox"/> Other = _____
C	Lumbar Support <i>choose ALL that are acceptable</i>	<u>Adjustable</u> <input checked="" type="checkbox"/> Up/Down = min. 50 mm (2.0 in.) height adjustment between 150mm (5.9 in.) to 250 mm (9.8 in.) <input type="checkbox"/> Other = _____ <input type="checkbox"/> Fixed = between 150 mm (5.9 in.) to 250 mm (9.8 in.) above seat
D	Armrests <i>choose ALL that are acceptable</i>	<u>Adjustable</u> <input checked="" type="checkbox"/> Height adjustable = min. 63 mm (2.5 in.) adjustment between 176 mm (6.9 in.) to 289 mm (11.4 in.) <input checked="" type="checkbox"/> Width adjustable = within the range of 443 mm (17.0 in.) to 493 mm (19.4 in.) <input type="checkbox"/> Pivot adjustable = min. 20 degrees inward and min. 10 degrees outward <input type="checkbox"/> Fixed = height range between 200 mm (7.9 in.) to 250 mm (9.8 in.) <input type="checkbox"/> None
E	Seat Depth <i>choose ALL that are acceptable</i>	<input checked="" type="checkbox"/> Adjustable = min. 50 mm (2.0 in.) adjustment within the range 420 mm (16.5 in.) to 460 mm (18.1 in.) <div> <input type="checkbox"/> Fixed <div> <input type="checkbox"/> Shallow = 380 mm (15.0 in.) to 420 mm (16.5 in.) <input type="checkbox"/> Medium = greater than 420 mm (16.5 in.) to 460 mm (18.1 in.) <input type="checkbox"/> Deep = greater than 460 mm (18.1 in.) </div> </div>
F	Seat Width	<u>Refer to chair type above</u> Rotary chairs and stools = min. width of 450 mm (17.7in.) Rotary Large Occupant models = min. width of 560 mm (22.0 in.)

G	Seat Height <i>choose ALL that are acceptable</i>	Rotary Chair	<input checked="" type="checkbox"/> Adjustable <input type="checkbox"/> Fixed = between 417 mm (16.4 in.) to 512 mm (20.2 in.)	<input checked="" type="checkbox"/> Standard = includes 417 mm (16.4 in.) or less to 512 mm (20.2 in.) or more <input type="checkbox"/> Low = includes 376 mm (14.8 in.) to 439 mm (17.3 in.) <input type="checkbox"/> Other = _____
		Rotary Stool with backrest	<input type="checkbox"/> Adjustable = includes range from 580 mm (23 in.) to 840 mm (33 in.) <input type="checkbox"/> Fixed = equal or greater than 670 mm (27.5 in)	
H	Tilt Mechanism <i>choose only 1</i>	<input checked="" type="checkbox"/> Tilt Mechanism seat and backrest adjust together in a ratio that falls within $\geq 1:1$ (includes both Synchro-Tilt and Unison Tilt) <input type="checkbox"/> Tilt Independently seat and backrest adjust independently of each other <input type="checkbox"/> No preference		
I	Seat and Backrest Locks <i>choose ALL that are acceptable</i>	<input type="checkbox"/> Setup Position = chair locks or stops at one position with seat flat and backrest straight <input checked="" type="checkbox"/> Multiple Positions = chair locks or stops at multiple positions (including setup position)		
J	Casters	<input checked="" type="checkbox"/> carpet <input type="checkbox"/> hard surface		
L	Foot Ring	Standard with stool models only		
	Finishes (Upholstery / Non-Upholstery) <i>choose ALL that are acceptable</i>	Backrest	<input type="checkbox"/> Upholstery <input checked="" type="checkbox"/> Breathable material (Mesh)	<input type="checkbox"/> Other = _____
		Seat	<input type="checkbox"/> Upholstery <input checked="" type="checkbox"/> Breathable material (Mesh)	<input type="checkbox"/> Other = _____
	Additional Criteria:	➤ Mesh back and seating fabric must be available in at least 5 different colours		

Table A3:



Side Chair FC1

QTY: 19

IMPORTANT:

Canada may request additional information to confirm criteria prior to contract award within a time period specified by the Identified User (IU). Suppliers must provide products that are compliant to the selected "■" **Requirement Choices**

	Criteria <i>Instructions</i>	Requirement Choices	
B	Backrest Height	Standard = minimum height of 354 mm (13.9 in.)	
	Backrest Profile choose ALL that are acceptable	■ No preference	
C	Lumbar Support choose only 1	<input type="checkbox"/> Yes = height adjustment between 150 mm (5.9 in.) to 250 mm (9.8 in.) <input checked="" type="checkbox"/> No	
D	Armrests choose only 1	<input type="checkbox"/> Yes <input checked="" type="checkbox"/> No	
E	Seat Depth choose only 1	Fixed	<input type="checkbox"/> Shallow = 380 mm (15.0 in.) to 420 mm (16.5 in.) <input checked="" type="checkbox"/> Medium = greater than 420 mm (16.5 in.) to 460 mm (18.1 in.) <input type="checkbox"/> Deep = greater than 460 mm (18.1 in.)
F	Seat Width	Standard = minimum width of 400 mm (15.7 in.)	
G	Seat Height	Fixed = between 417 mm (16.4 in.) and 512 mm (20.2 in.)	
H	Stacking: choose only 1	<input checked="" type="checkbox"/> Stacking <input type="checkbox"/> Non-Stacking <input type="checkbox"/> No preference <input checked="" type="checkbox"/> See Additional criteria below	
	Base Style	<input checked="" type="checkbox"/> Legs (4 post) <input checked="" type="checkbox"/> Casters <input type="checkbox"/> Glides	
	choose ALL that are acceptable	<input type="checkbox"/> Sled <input type="checkbox"/> Cantilever <input type="checkbox"/> Other = _____	

Solicitation No. - N° de l'invitation
EB129-220572/A
Client Ref. No. - N° de réf. du client

Amd. No. - N° de la modif.
File No. - N° du dossier

Buyer ID - Id de l'acheteur
ha1207
CCC No./N° CCC - FMS No./N° VME

Finishes (Upholstery / Non-Upholstery) choose ALL that are acceptable	Backrest	<input type="checkbox"/> Upholstery <input checked="" type="checkbox"/> Breathable material (Mesh) <input type="checkbox"/> Other = _____
	Seat	<input checked="" type="checkbox"/> Upholstery <input type="checkbox"/> Breathable material (Mesh) <input type="checkbox"/> Other = _____
Additional Criteria:	<ul style="list-style-type: none">➤ Back / seat shell and seating fabric must be available in at least 5 different colours each➤ Nesting chair style required	

ANNEX B

BASIS OF PAYMENT

1. Procurement Strategy

- ☐ Subcategory Procurement
- ☒ All-inclusive Procurement

2. Product and Pricing

INSTRUCTIONS TO BIDDERS: Bidders are to complete Sections B of the tables identified by the IU in this article as well as Tables 5, 8 and 9. **Bidders must provide a complete product offering for each Subcategory or All-inclusive Procurement.** In a resulting contract, the term “Bid” means the Supplier’s commitment, the term “Bidder” means “Contractor”.

ALL-INCLUSIVE PROCUREMENT

Table 1: Summary of Chairs for All-inclusive procurement.

Section A - IU REQUIREMENT			Section B – SUPPLIER’S BID		
Table	Title	Quantity (A)	Manufacturer/ Series/Model	Firm Unit Price (B)	Product Total (C)=(A)x(B)
A1	Rotary Chair WC1	29		\$	\$
A2	Rotary Chair CC1	5		\$	\$
A3	Side Chair FC1	19		\$	\$
				Subtotal:	\$

Table 2 – Optional Product (chairs)
Not applicable

Table 3 – Delivery (Standard Lead time is between 6-10 weeks for furniture delivery and installation)

Section A - IU REQUIREMENT				Section B – SUPPLIER'S BID	
Table(s)	Location	Desired Date** (YY/MM/DD)	Desired Time*	Supplier will deliver on the date and at the time below**	Firm Lot Price \$
A1	1505 Barrington Street, 15 th Floor Halifax NS, B3J 3K5	August 11, 2021 Pending construction schedule	Normal Business Hours Note: furniture can be delivered during regular hours, but you have to share the elevator. The service elevator can be booked after hours through Colliers.	____ : weeks Standard Lead time is between 6-10 weeks for furniture delivery and installation.	\$
*Normal Business Hours are 8:00 – 17:00 **The Project Authority (PA) will provide the supplier the authority to proceed prior to the finalized delivery date taking into consideration the delivery time provided by the supplier. Canada will not be responsible if the supplier chooses to proceed without the PA authorization.			Subtotal for Deliveries:		\$

Table 4 – Optional Delivery ☒ Not Applicable

Table 5 - Canada's Facilities to Accommodate the Delivery

Canada's Facilities to Accommodate the Delivery	
Loading Dock/Location	1472 Hollis Street, Halifax, NS B3J 1V2
Dock	Standard Size
Lift	[Exists] [3000lbs – more than sufficient for furniture] [56" x 85"]
Door	Freight Elevator [Size – 96" x 50"] Door from Service Area [83" x 71"]
Freight Elevator	[See Attached Sketch]

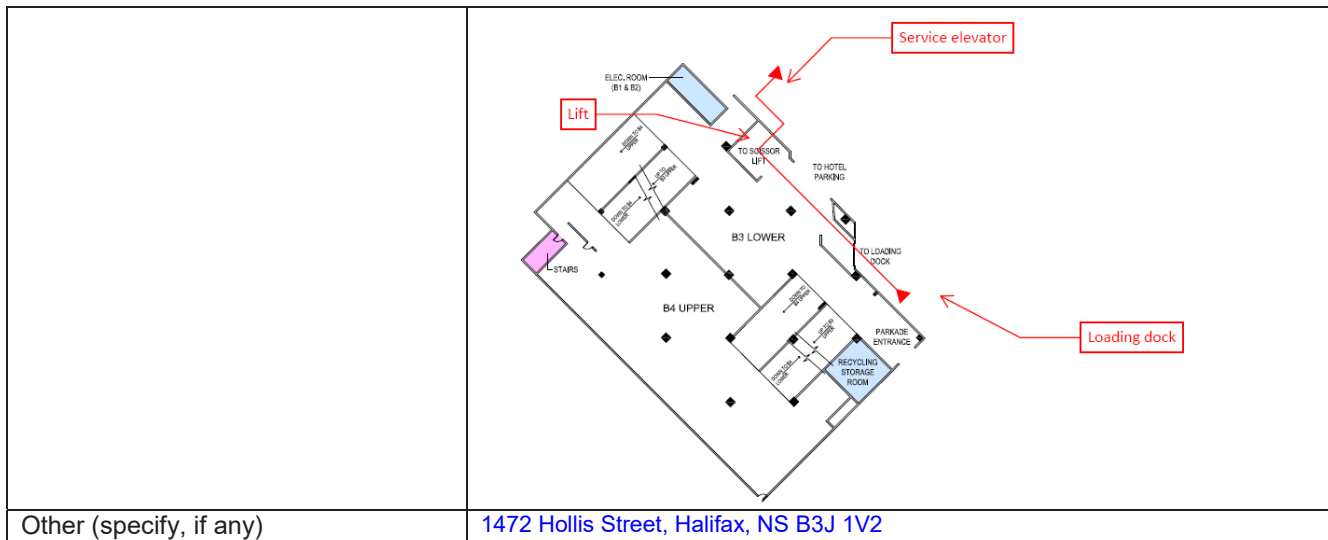


Table 6 – Installation (Standard Lead time is between 6-10 weeks for furniture delivery and installation)

Section A - IU REQUIREMENT				Section B – SUPPLIER'S BID	
Table(s)	Location	Desired Date** (YY/MM/DD)	Desired Time*	Supplier will install on the date and at the time below*	Firm Price \$
A1, A2, A3	1505 Barrington Street, 15 th Floor Halifax NS, B3J 3K5	August 11 complete by September 1, 2021 Pending construction schedule	Normal Business Hours	____ : weeks Standard Lead time is between 6-10 weeks for furniture delivery and installation.	\$
*Normal Business Hours are 8:00 – 17:00 **The Project Authority (PA) will provide the supplier the authority to proceed prior to the finalized installation date taking into consideration the installation time provided by the supplier. Canada will not be responsible if the supplier chooses to proceed without the PA authorization.			Subtotal for Installations:		\$

Table 7 – Optional Installation

Table 8 - Bid Evaluation and Contract Total for _____
(Canada may complete if not completed by the Bidder)

1	Firm Product Total (Table 1)	\$
2	Firm Delivery Total (Table 3)	\$
3	Firm Installation Total (Table 6)	\$
4	Optional Product Total (Table 2)	
5	Optional Delivery Total (Table 4)	
6	Optional Installation Total (Table 7)	
7	Total Evaluated (Bid) Price* (1 + 2 + 3 + 4 + 5 + 6) <i>[to be removed at contract award]</i>	\$
8	Contract Price(1+2+3): <i>[applicable at contract award only]</i>	\$
9	Applicable Tax(es): <i>[applicable at contract award only]</i>	\$
10	Total Estimated Cost (8+9): <i>[applicable at contract award only]</i>	\$

*Applicable taxes extra.

Table 9 – Bidder's Authorized Representative

1.	Bidder's Authorized Representative for the Bid and the Contract		
	Name:	Telephone:	
		Email:	
		SA number:	
		PBN:	