

PUBLIC WORKS AND GOVERNMENT SERVICES CANADA

Professional and Technical Services, Real Property Services Branch, Pacific Region

Km 450.0 – 451.4 Slide Stabilization and  
Safety Improvements, Alaska Highway,  
BC

Addendum #001

Project No. R.115165.001

2021-07-20

*Explanation of Addendum Presentation: Changes to the Specifications and Changes to the Contract Drawings sections of this Addendum have been presented as follows:*

- *New text has been underlined for ease of identification.*

**Changes to the Specifications:**

1. Section – Table of Contents

**Delete:**

List of Contract Drawings.

**Insert:**

List of Contract Drawings:

**LIST OF CONTRACT DRAWINGS**

| Sheet No. | Title  | Drawing Number | Revision Number |
|-----------|--|----------------|-----------------|
| 1         | Cover Page   |                |                 |
| 2         | Project Location Plan, Key Plan, Drawing Index, Legend & Control Monuments | C001           | 0               |
| 3         | ATV Trail Plan – Profile Sta. 5+040 to Sta. 5+355                          | C101           | 0               |
| 4         | ATV Trail Plan – Profile Sta. 5+355 to Sta. 5+680                          | C102           | <u>1</u>        |
| 5         | ATV Trail Plan – Profile Sta. 5+680 to Sta. 6+000                          | C103           | 0               |
| 6         | ATV Trail Plan – Profile Sta. 6+000 to Sta. 6+260                          | C104           | 0               |
| 7         | ATV Trail Plan – Profile Sta. 6+260 to Sta. 6+460                          | C105           | 0               |
| 8         | ATV Trail Connector Plan – Profile Sta. 0+000 to Sta. 0+111                | C106           | 0               |
| 9         | ATV Trail Horizontal Alignment Geometry & Ditch Layout Details             | C107           | 0               |
| 10        | Interceptor and Slot Drains Site Plan                                      | C201           | 0               |

PUBLIC WORKS AND GOVERNMENT SERVICES CANADA

Professional and Technical Services, Real Property Services Branch, Pacific Region

Km 450.0 – 451.4 Slide Stabilization and  
Safety Improvements, Alaska Highway,  
BC

Addendum #001

Project No. R.115165.001

2021-07-20

|    |   |         |   |
|----|---|---------|---|
| 11 | Interceptor Drain Profile                                   | C202    | 0 |
| 12 | Interceptor and Slot Drain Sections                         | C203    | 0 |
| 13 | Interceptor Drain Details                                   | C204    | 0 |
| 14 | ATV Trail Typical Sections                                  | C301    | 0 |
| 15 | Riprap Ditch Details (Sheet 1 of 2)                         | C302    | 0 |
| 16 | Riprap Ditch Details (Sheet 2 of 2)                         | C303    | 0 |
| 17 | ATV Trail & Concrete Block Wall Details                     | C304    | 0 |
| 18 | Concrete Block Wall Elevation View                          | C305    | 0 |
| 19 | Culvert Typical Sections & Details                          | C306    | 0 |
| 20 | Lockable Removable Barrier and Signage Details              | C307    | 0 |
| 21 | Welded Galvanized Fence Details                             | C308    | 0 |
| 22 | Precast Concrete Barrier Details                            | C309    | 0 |
| 23 | Welded Galvanized Railing Details                           | C310    | 0 |
| 24 | ATV Trail Ditch Crossing Details                            | C311    | 0 |
| 25 | ATV Trail Decommissioning Typical Sections                  | C312    | 0 |
| 26 | ATV Trail Cross Sections Sta. 5+060 to Sta. 5+280           | XSEC-01 | 0 |
| 27 | ATV Trail Cross Sections Sta. 5+300 to Sta. 5+520           | XSEC-02 | 0 |
| 28 | ATV Trail Cross Sections Sta. 5+540 to Sta. 5+700           | XSEC-03 | 0 |
| 29 | ATV Trail Cross Sections Sta. 5+720 to Sta. 5+900           | XSEC-04 | 0 |
| 30 | ATV Trail Cross Sections Sta. 5+920 to Sta. 6+140           | XSEC-05 | 0 |
| 31 | ATV Trail Cross Sections Sta. 6+160 to Sta. 6+380           | XSEC-06 | 0 |
| 32 | ATV Connector Trail Cross Sections Sta. 0+000 to Sta. 0+100 | XSEC-07 | 0 |
| 33 | Culvert Cross Sections                                      | XSEC-08 | 0 |

PUBLIC WORKS AND GOVERNMENT SERVICES CANADA

Professional and Technical Services, Real Property Services Branch, Pacific Region

Km 450.0 – 451.4 Slide Stabilization and  
Safety Improvements, Alaska Highway,  
BC

Addendum #001

Project No. R.115165.001

2021-07-20

2. Section 31 05 16 – Aggregates: General

**Delete:**

2.3 – Crushed Surfacing Gravel, Table 31 05 16 - 01:

**Insert:**

2.3 – Crushed Surfacing Gravel, Table 31 05 16 - 01:

| Table 31 05 16 – 01: Gradation Limits:<br>Crushed Surfacing Gravel |                           |
|--|---------------------------|
| Sieve Designation (mm)   | Percent Passing by Weight |
| 25   | 100                       |
| 19   | 85 – 100                  |
| 9.5  | 60 – 85                   |
| 4.75   | 40 – 70                   |
| 1.18   | 20 – 50                   |
| 0.300  | 10 – 30                   |
| 0.075  | 7 – 15                    |

**Changes to the Contract Drawings**

**Delete:**

Sheet C102 – ATV Trail Plan – Profile Sta. 5+355 to Sta. 5+680 – Rev 0 – Issued for Tender  
– Dated: 21/05/11

**Insert:**

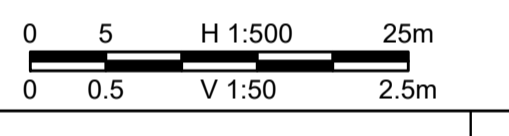
Sheet C102 – ATV Trail Plan – Profile Sta. 5+355 to Sta. 5+680 – Rev 1 – Issued for  
Amendment 001 – Dated: 21/07/20

**All other terms and conditions remain unchanged.**



**ISSUED FOR AMENDMENT 001**

- GENERAL NOTES:  
 1. DIMENSIONS, COORDINATES, ELEVATIONS ARE IN METERS UNLESS NOTED OTHERWISE  
 2. THE CONTRACTOR IS RESPONSIBLE FOR VERIFYING THE LOCATION OF ALL UTILITIES PRIOR TO CONSTRUCTION  
 3. THE LOCATIONS AND EXTENT OF INTERCEPTOR DRAIN AND SLOT DRAINS MAY BE DIRECTED BY THE DEPARTMENTAL REPRESENTATIVE DURING WORK  
 4. ALL DISTURBED AREAS TO BE HYDRAULIC SEEDING



|               |                          |           |
|---------------|--------------------------|-----------|
| 1             | ISSUED FOR AMENDMENT 001 | 21/07/20  |
| 0             | ISSUED FOR TENDER        | 21/05/11  |
| Revision/     | Description/Description  | Date/Date |
| Revised/      |                          |           |
| Client/client |                          |           |

Public Services and Procurement Canada



Project title/Titre du projet

**KM 450.0 - 451.4 SLIDE STABILIZATION AND SAFETY IMPROVEMENTS ALASKA HIGHWAY, BC**

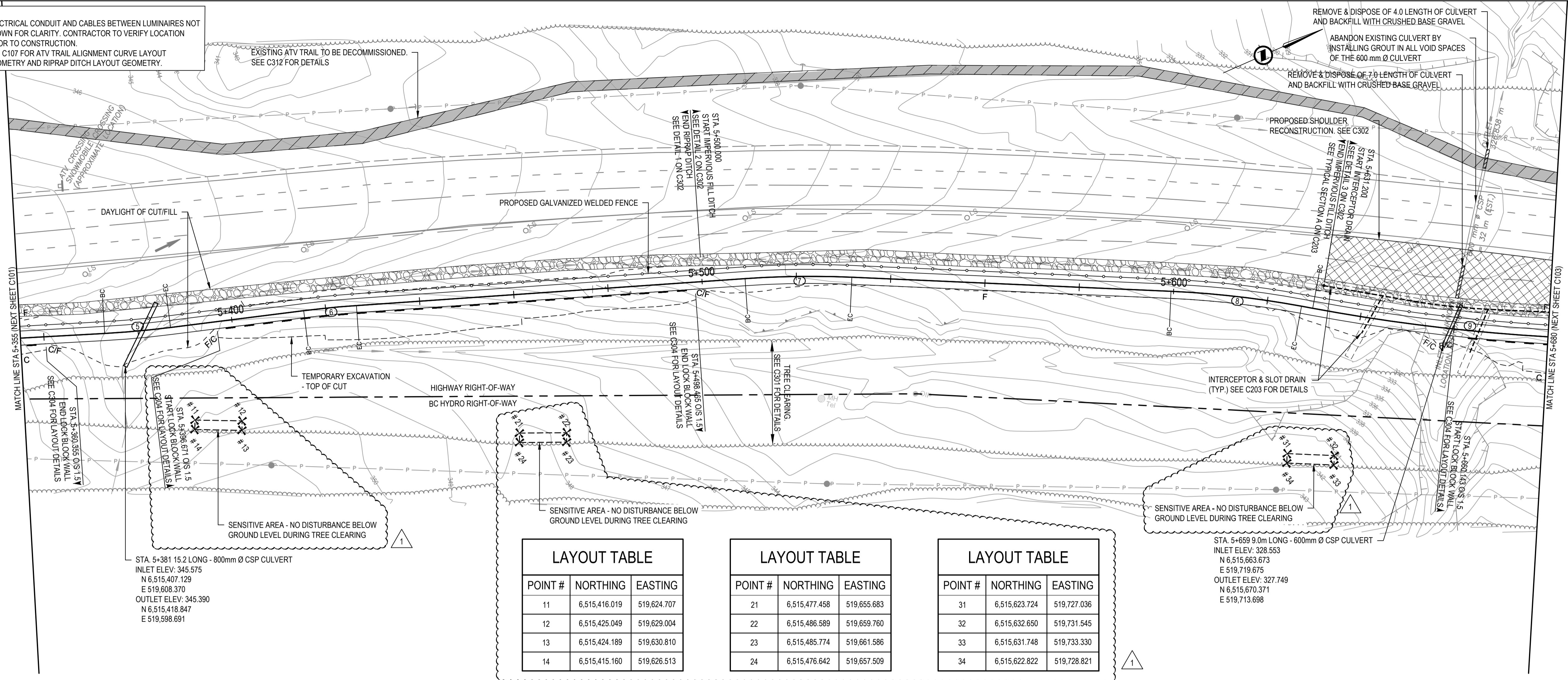
Approved by/Approve par  
**G. WILKINS**  
 Designed by/Concept par  
**A. HORWOOD / E. YANG**  
 Drawn by/Dessine par  
**A. DEEPWELL**  
 PWGSC Project Manager/Administrateur de Projets TPSC  
**A. TAHERI**  
 PWGSC, Architectural and Engineering Resources Manager/Ressources Architectural et de Directeur d'ingénierie, TPSC

Client/client  
**Public Services and Procurement Canada**

**ATV TRAIL PLAN - PROFILE**  
**STA. 5+355 TO STA. 5+680**

|                           |               |                          |
|---------------------------|---------------|--------------------------|
| Project No./No. du projet | Sheet/Feuille | Revision no./La Révision |
| <b>R.115165.001</b>       | <b>C102</b>   | <b>1</b>                 |

- NOTES:  
 1. ELECTRICAL CONDUIT AND CABLES BETWEEN LUMINAIRES NOT SHOWN FOR CLARITY. CONTRACTOR TO VERIFY LOCATION PRIOR TO CONSTRUCTION.  
 2. SEE C107 FOR ATV TRAIL ALIGNMENT CURVE LAYOUT GEOMETRY AND RIPRAP DITCH LAYOUT GEOMETRY.



**LAYOUT TABLE**

| POINT # | NORTHING      | EASTING     |
|---------|---------------|-------------|
| 11      | 6,515,416.019 | 519,624.707 |
| 12      | 6,515,425.049 | 519,629.004 |
| 13      | 6,515,424.189 | 519,630.810 |
| 14      | 6,515,415.160 | 519,626.513 |

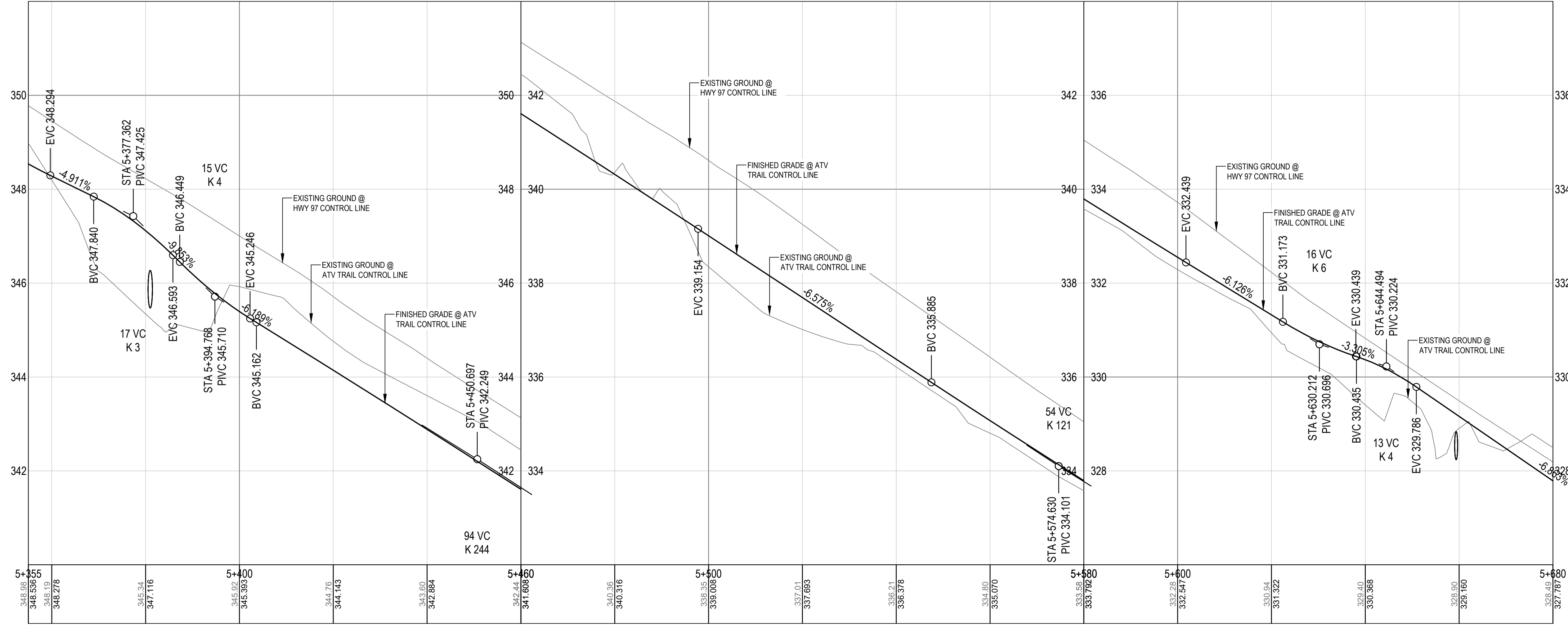
**LAYOUT TABLE**

| POINT # | NORTHING      | EASTING     |
|---------|---------------|-------------|
| 21      | 6,515,477.458 | 519,655.683 |
| 22      | 6,515,486.589 | 519,659.760 |
| 23      | 6,515,485.774 | 519,661.586 |
| 24      | 6,515,476.642 | 519,657.509 |

**LAYOUT TABLE**

| POINT # | NORTHING      | EASTING     |
|---------|---------------|-------------|
| 31      | 6,515,623.724 | 519,727.036 |
| 32      | 6,515,632.650 | 519,731.545 |
| 33      | 6,515,631.748 | 519,733.330 |
| 34      | 6,515,622.822 | 519,728.821 |

STA. 5+659 9.0m LONG - 600mm Ø CSP CULVERT  
 INLET ELEV: 328.553  
 N 6,515,663.673  
 E 519,719.675  
 OUTLET ELEV: 327.749  
 N 6,515,670.371  
 E 519,713.698



Q:\Vancouver\Transportation\TRN\HWY\Projects\TRN\HWY\03091 Alaska Highway Km 450.6 Slide (ATV Trail)\400 - Drawings\C101-09 PLAN PROFILES.dwg [C102] July 20, 2021 - 8:42:08 am (BY: DEEPWELL, ANDREW)

