

---

**The following changes/clarifications in the tender documents are effective immediately.  
This addendum will form part of the contract documents.**

*Explanation of Addendum Presentation: Changes to the Specifications and Changes to the Contract Drawings section of this Addendum have been presented as follows:*

- *New text has been underlined for ease of identification*
- *Removed text has a “strikethrough” and is to be deleted from the text*

**Changes to the Specifications:**

1. Section – Table of Contents

**Delete:**

List of Contract Drawings

**Insert:**

List of Contract Drawings

**LIST OF CONTRACT DRAWINGS**

Sheet No.	Title	Drawing Number	Revision Number
1	Cover Page	C000	0
2	Project Location Plan, Project Key Plan, Drawing Index, Survey Control Monuments and Legend	C001	0
3	Highway Plan / Profile: Sta. 566+935 to Sta. 567+480	C101	<u>1</u>
4	Highway Plan / Profile: Sta. 567+480 to Sta. 568+140	C102	<u>1</u>
5	Highway Plan / Profile: Sta. 568+140 to Sta. 568+820	C103	<u>1</u>

---

6	Highway Plan / Profile: Sta. 568+820 to Sta. 569+480	C104	<u>1</u>
7	Highway Plan / Profile: Sta. 569+480 to Sta. 570+140	C105	<u>1</u>
8	Highway Plan / Profile: Sta. 570+140 to Sta. 570+320	C106	<u>1</u>
9	Tetsa River Lodge Access Plan	C107	<u>1</u>
10	Culvert Sta. 568+840 Plan / Profile	C201	<u>1</u>
11	Culvert Sta. 569+950 Plan / Profile	C202	<u>1</u>
12	Highway Typical Sections	C301	<u>1</u>
13	Access Road Typical Section and Profile	C302	0
14	Culvert Typical Sections and Details	C303	0
15	Culvert Sta. 568+840 Typical Sections	C304	0
16	Culvert Sta. 569+950 Typical Sections	C305	0
17	Culvert Fish Baffle Details	C306	0
18	Sign Details	C307	0
19	Highway Cross Sections: Sta. 566+940 to Sta. 567+320	C401	0
20	Highway Cross Sections: Sta. 567+340 to Sta. 567+560	C402	0
21	Highway Cross Sections: Sta. 567+580 to Sta. 567+760	C403	0
22	Highway Cross Sections: Sta. 567+780 to Sta. 568+040	C404	0
23	Highway Cross Sections: Sta. 568+060 to Sta. 568+280	C405	0
24	Highway Cross Sections: Sta. 568+300 to Sta. 568+560	C406	0
25	Highway Cross Sections: Sta. 568+580 to Sta. 568+800	C407	0
26	Highway Cross Sections: Sta. 568+820 to Sta. 569+040	C408	0
27	Highway Cross Sections: Sta. 569+060 to Sta. 569+400	C409	0
28	Highway Cross Sections: Sta. 569+420 to Sta. 569+640	C410	0

---

29	Highway Cross Sections: Sta. 569+660 to Sta. 569+920	C411	0
30	Highway Cross Sections: Sta. 569+940 to Sta. 570+240	C412	0
31	Highway Cross Sections: Sta. 570+260 to Sta. 570+320	C413	0
32	Sta. 568+840 Culvert Environmental Construction Staging – Plan View Phase 1	C501	0
33	Sta. 568+840 Culvert Environmental Construction Staging – Plan View Phase 2	C502	0
34	Sta. 568+840 Culvert Environmental Construction Staging – Plan View Phase 3	C503	0
35	Sta. 569+950 Culvert Environmental Construction Staging – Plan View Phase 1	C504	0
36	Sta. 569+950 Culvert Environmental Construction Staging – Plan View Phase 2	C505	0
37	Environmental Construction Staging – Check Dam & Fish Stop Net Details	C506	0

**Changes to the Contract Drawings:**

**Delete:**

Sheet C101 – Highway Plan / Profile: Sta. 566+935 to Sta. 567+480 – Rev 0 – Issued for Tender – Dated: 21/06/02

Sheet C102 – Highway Plan / Profile: Sta. 567+480 to Sta. 568+140 – Rev 0 – Issued for Tender – Dated: 21/06/02

Sheet C103 – Highway Plan / Profile: Sta. 568+140 to Sta. 568+820 – Rev 0 – Issued for Tender – Dated: 21/06/02

Sheet C104 – Highway Plan / Profile: Sta. 568+820 to Sta. 569+480 – Rev 0 – Issued for Tender – Dated: 21/06/02

Sheet C105 – Highway Plan / Profile: Sta. 569+480 to Sta. 570+140 – Rev 0 – Issued for Tender – Dated: 21/06/02

Sheet C106 – Highway Plan / Profile: Sta. 570+140 to Sta. 570+320 – Rev 0 – Issued for Tender – Dated: 21/06/02

---

Sheet C107 – Tetsa River Lodge Access Plan – Rev 0 – Issued for Tender – Dated: 21/06/02

Sheet C201 – Culvert Sta. 568+840 Plan / Profile – Rev 0 – Issued for Tender – Dated: 21/06/02

Sheet C202 – Culvert Sta. 569+950 Plan / Profile – Rev 0 – Issued for Tender – Dated: 21/06/02

Sheet C301 – Highway Typical Sections – Rev 0 – Issued for Tender – Dated: 21/06/02

**Insert:**

Sheet C101 – Highway Plan / Profile: Sta. 566+935 to Sta. 567+480 – Rev 1 – Issued for Amendment 003 – Dated: 21/07/26

Sheet C102 – Highway Plan / Profile: Sta. 567+480 to Sta. 568+140 – Rev 1 – Issued for Amendment 003 – Dated: 21/07/26

Sheet C103 – Highway Plan / Profile: Sta. 568+140 to Sta. 568+820 – Rev 1 – Issued for Amendment 003 – Dated: 21/07/26

Sheet C104 – Highway Plan / Profile: Sta. 568+820 to Sta. 569+480 – Rev 1 – Issued for Amendment 003 – Dated: 21/07/26

Sheet C105 – Highway Plan / Profile: Sta. 569+480 to Sta. 570+140 – Rev 1 – Issued for Amendment 003 – Dated: 21/07/26

Sheet C106 – Highway Plan / Profile: Sta. 570+140 to Sta. 570+320 – Rev 1 – Issued for Amendment 003 – Dated: 21/07/26

Sheet C107 – Tetsa River Lodge Access Plan – Rev 1 – Issued for Amendment 003 – Dated: 21/07/26

Sheet C201 – Culvert Sta. 568+840 Plan / Profile – Rev 1 – Issued for Amendment 003 – Dated: 21/07/26

Sheet C202 – Culvert Sta. 569+950 Plan / Profile – Rev 1 – Issued for Amendment 003 – Dated: 21/07/26

Sheet C301 – Highway Typical Sections – Rev 1 – Issued for Amendment 003 – Dated: 21/07/26

**End of Addendum No. 3**

**ISSUED FOR ADDENDUM 003**

- GENERAL NOTES:**
- DIMENSIONS, COORDINATES, ELEVATIONS ARE SHOWN IN METRES UNLESS NOTED.
  - UNLESS NOTED OTHERWISE, ALL EXISTING SIGNS AND POSTS WITHIN THE LIMITS OF WORK SHALL BE PROTECTED FROM DAMAGE.
  - LOCATION OF FIBRE OPTIC CABLE IS APPROXIMATE. CONTRACTOR IS RESPONSIBLE FOR VERIFYING EXACT LOCATION OF ALL UTILITIES PRIOR TO CONSTRUCTION.
  - UNLESS NOTED OTHERWISE, ALL EXISTING SIGNS AND POSTS WITHIN THE LIMITS OF CONSTRUCTION SHALL BE REMOVED AND STOCKPILED IN A LOCATION DIRECTED BY THE DEPARTMENTAL REPRESENTATIVE.
  - REFER TO TABLE ON SHEET C307 FOR SIGN LAYOUT DETAILS.

**LEGEND**

(PROFILE / SUPERELEVATION)  
 LT = LEFT SIDE  
 RT = RIGHT SIDE  
 NC = NORMAL CROWN  
 ST = SPIRAL TO TANGENT  
 RC = REVERSE CROWN  
 SC = SPIRAL TO CURVE  
 CS = CURVE TO SPIRAL

BNC = BEGIN NORMAL CROWN  
 ENC = END NORMAL CROWN  
 LC = LEVEL CROWN  
 BFS = BEGIN FULL SUPERELEVATION  
 RFS = REVERSE CROWN  
 EFS = END FULL SUPERELEVATION

**PROFILE:**  
 PROPOSED FINISHED GRADE  
 ORIGINAL GROUND

**SUPERELEVATION:**  
 LEFT HAND SIDE  
 RIGHT HAND SIDE



**DESIGN SPEED 100 km/h**

(H) Scale: 1:1000 (metres)  
 (V) Scale: 1:100 (metres)

1	ISSUED FOR ADDENDUM 003	21/07/26
0	ISSUED FOR TENDER	21/06/02
Revision	Description/Description	Date/Date

Client/client  
**Public Services and Procurement Canada**



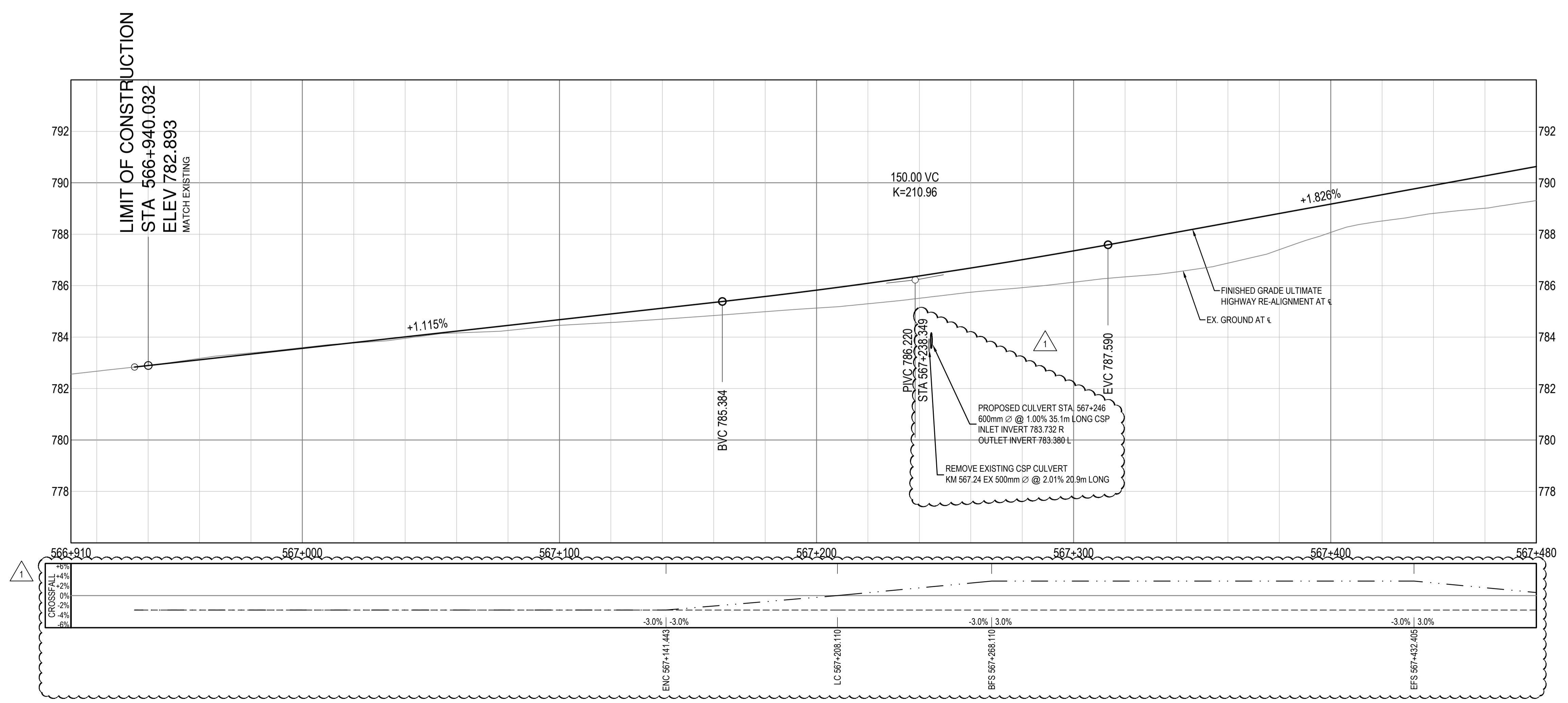
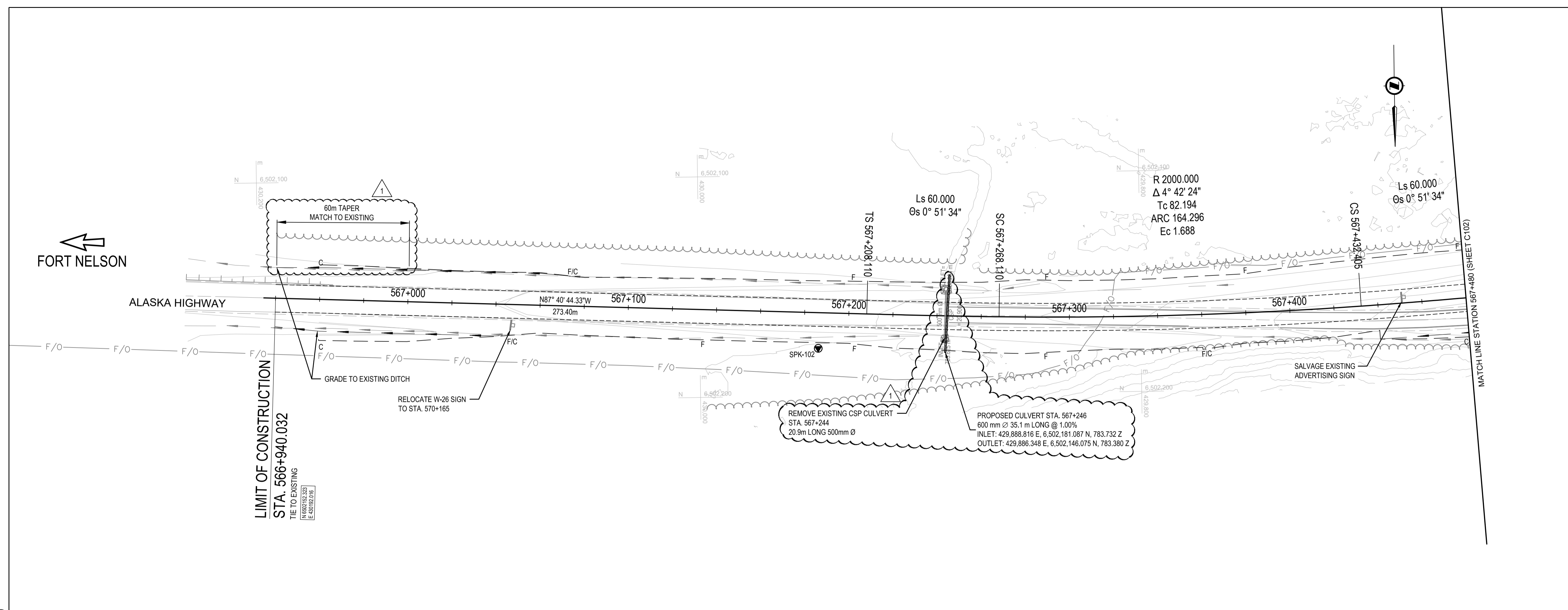
Project title/Titre du projet  
**KM 568 TO KM 573  
 (TETSA RIVER)  
 RECONSTRUCTION - PHASE 2  
 ALASKA HIGHWAY, BC**

Approved by/Approuvé par  
**S. LI**  
 Designed by/Concepté par  
**E. YANG / M. KELEHER**  
 Drawn by/Dessiné par  
**A. DEEPWELL**  
 PWGSC Project Manager/Administrateur de Projets TPSCG  
**A. TAHERI**  
 PWGSC, Architectural and Engineering Resources Manager/  
 Ressources Architectural et de Directeur d'ingénierie, TPSCG

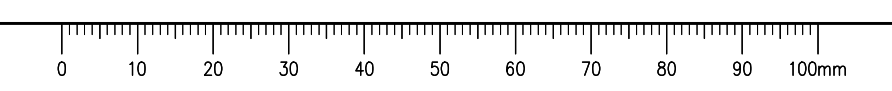
Client/client  
**Public Services and Procurement Canada**

Drawing title/Titre du dessin  
**HIGHWAY PLAN / PROFILE:  
 STA. 566+935 TO STA. 567+480**

Project No./No. du projet <b>R.112220.002</b>	Sheet/Feuille <b>C101</b>	Revision no./La Révision no. <b>1</b>
--	------------------------------	--



Q:\Vancouver\Transportation\TRN\VHWY03172 Alaska Hwy Km 568 - 571 Realignment\CADD\Sheets Phase 2\C101-C106 PLAN PROFILE.dwg [C101] July 26, 2021 - 9:03:10 am (BY: DEEPWELL, ANDREW)



**ISSUED FOR ADDENDUM 003**

- GENERAL NOTES:**
- DIMENSIONS, COORDINATES, ELEVATIONS ARE SHOWN IN METRES UNLESS NOTED.
  - UNLESS NOTED OTHERWISE, ALL EXISTING SIGNS AND POSTS WITHIN THE LIMITS OF WORK SHALL BE PROTECTED FROM DAMAGE.
  - LOCATION OF FIBRE OPTIC CABLE IS APPROXIMATE. CONTRACTOR IS RESPONSIBLE FOR VERIFYING EXACT LOCATION OF ALL UTILITIES PRIOR TO CONSTRUCTION.
  - UNLESS NOTED OTHERWISE, ALL EXISTING SIGNS AND POSTS WITHIN THE LIMITS OF CONSTRUCTION SHALL BE REMOVED AND STOCKPILED IN A LOCATION DIRECTED BY THE DEPARTMENTAL REPRESENTATIVE.
  - REFER TO TABLE ON SHEET C307 FOR SIGN LAYOUT DETAILS.

**LEGEND**  
 (PROFILE / SUPERELEVATION)  
 LT = LEFT SIDE  
 RT = RIGHT SIDE  
 NC = NORMAL CROWN  
 ST = SPIRAL TO TANGENT  
 RC = REVERSE CROWN  
 SC = SPIRAL TO CURVE  
 CS = CURVE TO SPIRAL

BNC = BEGIN NORMAL CROWN  
 ENC = END NORMAL CROWN  
 LC = LEVEL CROWN  
 BFS = BEGIN FULL SUPERELEVATION  
 RCF = REVERSE CROWN  
 EFS = END FULL SUPERELEVATION

**PROFILE:**  
 PROPOSED FINISHED GRADE  
 ORIGINAL GROUND

**SUPERELEVATION:**  
 LEFT HAND SIDE  
 RIGHT HAND SIDE



**DESIGN SPEED 100 km/h**

0 50  
 (H) Scale: 1:1000 (metres)  
 0 5  
 (V) Scale: 1:100 (metres)

Revision	Description/Description	Date/Date
1	ISSUED FOR ADDENDUM 003	21/07/26
0	ISSUED FOR TENDER	21/06/02

Client/client  
**Public Services and Procurement Canada**

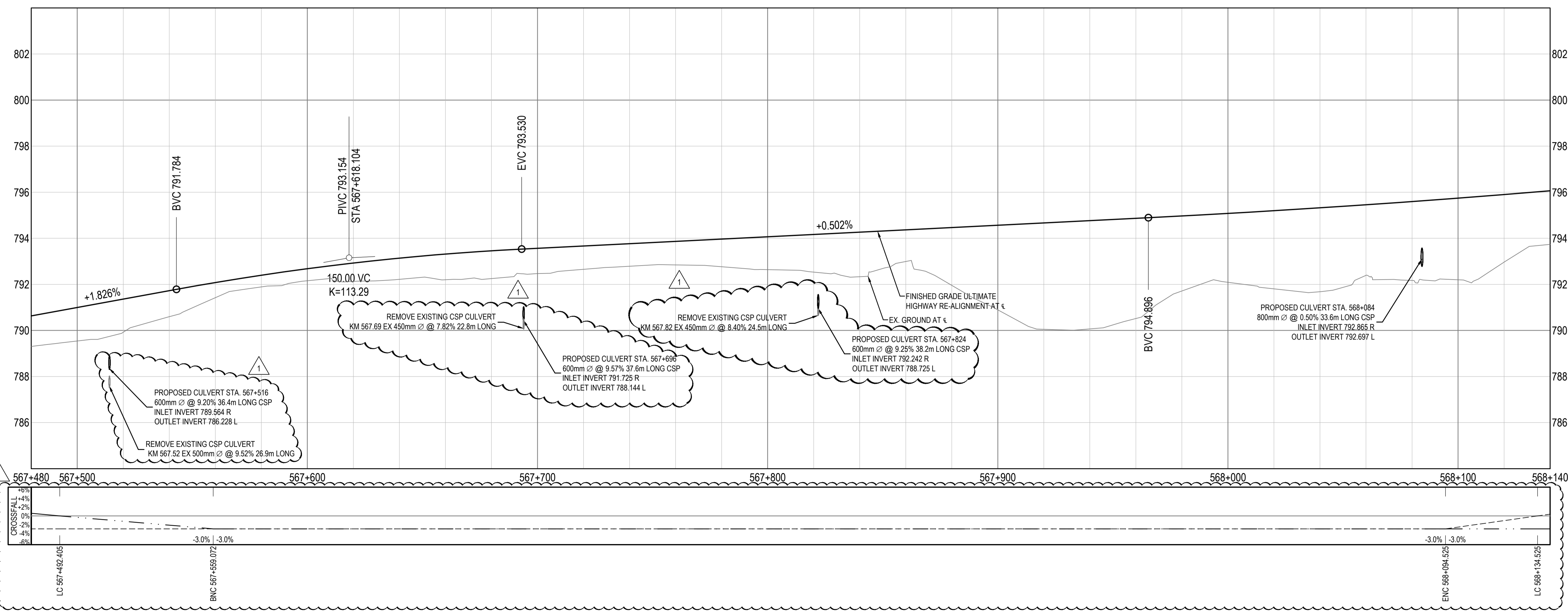
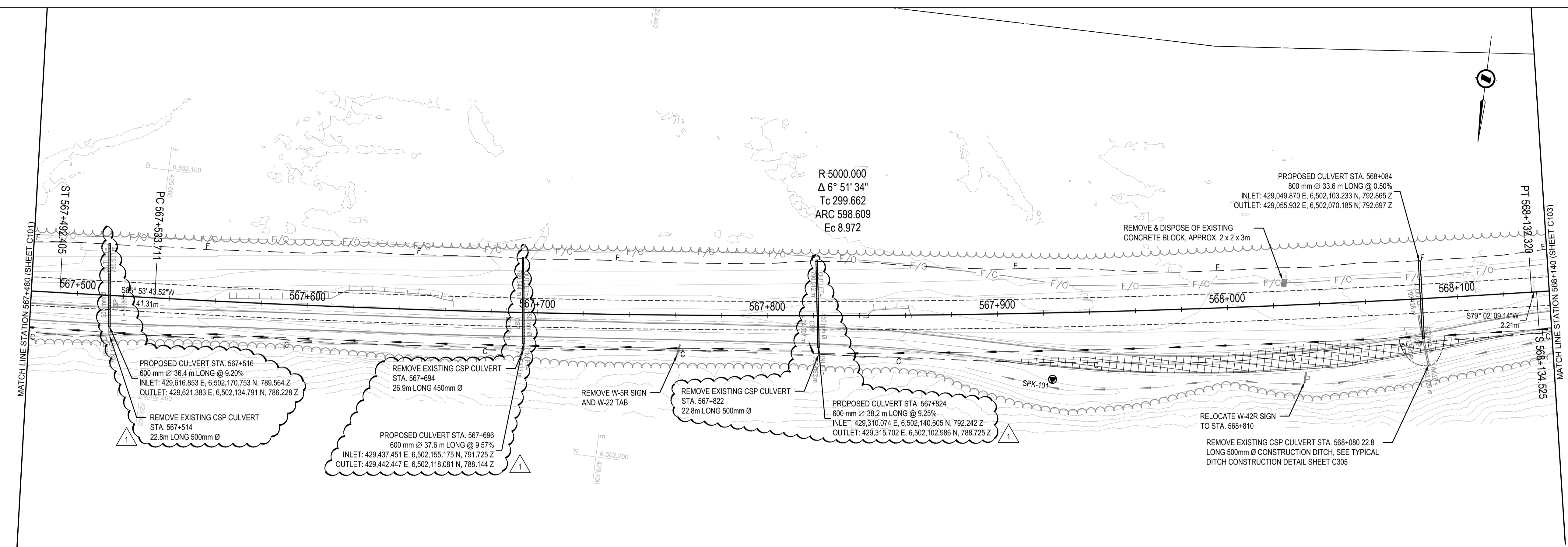
Project title/Titre du projet  
**KM 568 TO KM 573 (TETSA RIVER) RECONSTRUCTION - PHASE 2 ALASKA HIGHWAY, BC**

Approved by/Approuvé par  
**S. LI**  
 Designed by/Concepté par  
**E. YANG / M. KELEHER**  
 Drawn by/Dessiné par  
**A. DEEPWELL**  
 PWSC Project Manager/Administrateur de Projets TPSCG  
**A. TAHERI**  
 PWSC, Architectural and Engineering Resources Manager/Ressources Architectural et de Directeur d'ingénierie, TPSCG

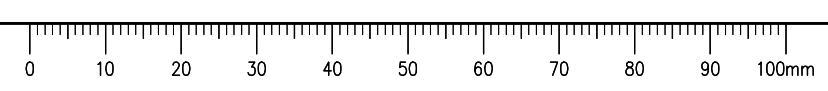
Client/client  
**Public Services and Procurement Canada**

Drawing title/Titre du dessin  
**HIGHWAY PLAN / PROFILE: STA. 567+480 TO STA. 568+140**

Project No./No. du projet	Sheet/Feuille	Revision no./La Révision no.
<b>R.112220.002</b>	<b>C102</b>	<b>1</b>



Q:\Vancouver\Transportation\TRN\HWY03172 Alaska Hwy Km 568 - 571 Realignment\CADD\Sheets Phase 2\C101-C106 PLAN PROFILE.dwg [C102] July 26, 2021 - 9:03:27 am (BY: DEEPWELL, ANDREW)



**ISSUED FOR ADDENDUM 003**

- GENERAL NOTES:**
- DIMENSIONS, COORDINATES, ELEVATIONS ARE SHOWN IN METRES UNLESS NOTED.
  - UNLESS NOTED OTHERWISE, ALL EXISTING SIGNS AND POSTS WITHIN THE LIMITS OF WORK SHALL BE PROTECTED FROM DAMAGE.
  - LOCATION OF FIBRE OPTIC CABLE IS APPROXIMATE. CONTRACTOR IS RESPONSIBLE FOR VERIFYING EXACT LOCATION OF ALL UTILITIES PRIOR TO CONSTRUCTION.
  - UNLESS NOTED OTHERWISE, ALL EXISTING SIGNS AND POSTS WITHIN THE LIMITS OF CONSTRUCTION SHALL BE REMOVED AND STOCKPILED IN A LOCATION DIRECTED BY THE DEPARTMENTAL REPRESENTATIVE.
  - REFER TO TABLE ON SHEET C307 FOR SIGN LAYOUT DETAILS.

**LEGEND**  
 (PROFILE / SUPERELEVATION)  
 LT = LEFT SIDE  
 RT = RIGHT SIDE  
 NC = NORMAL CROWN  
 ST = SPIRAL TO TANGENT  
 RC = REVERSE CROWN  
 SC = SPIRAL TO CURVE  
 CS = CURVE TO SPIRAL

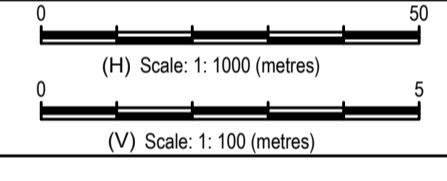
BNC = BEGIN NORMAL CROWN  
 ENC = END NORMAL CROWN  
 LC = LEVEL CROWN  
 BFS = BEGIN FULL SUPERELEVATION  
 RCF = REVERSE CROWN  
 EFS = END FULL SUPERELEVATION

**PROFILE:**  
 PROPOSED FINISHED GRADE  
 ORIGINAL GROUND

**SUPERELEVATION:**  
 LEFT HAND SIDE  
 RIGHT HAND SIDE



**DESIGN SPEED 100 km/h**



Revision	Description/Description	Date/Date
1	ISSUED FOR ADDENDUM 003	21/07/26
0	ISSUED FOR TENDER	21/06/02

Client/client  
**Public Services and Procurement Canada**



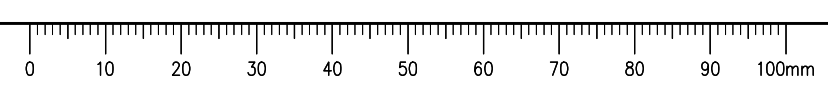
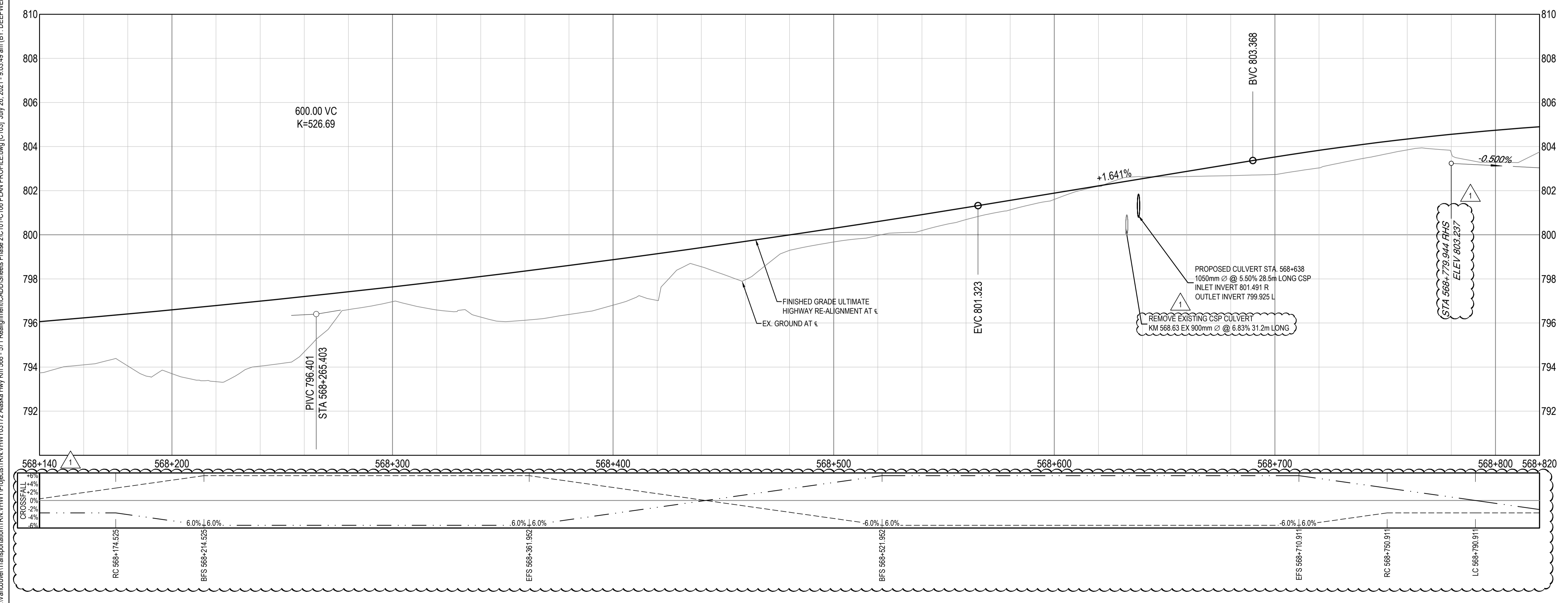
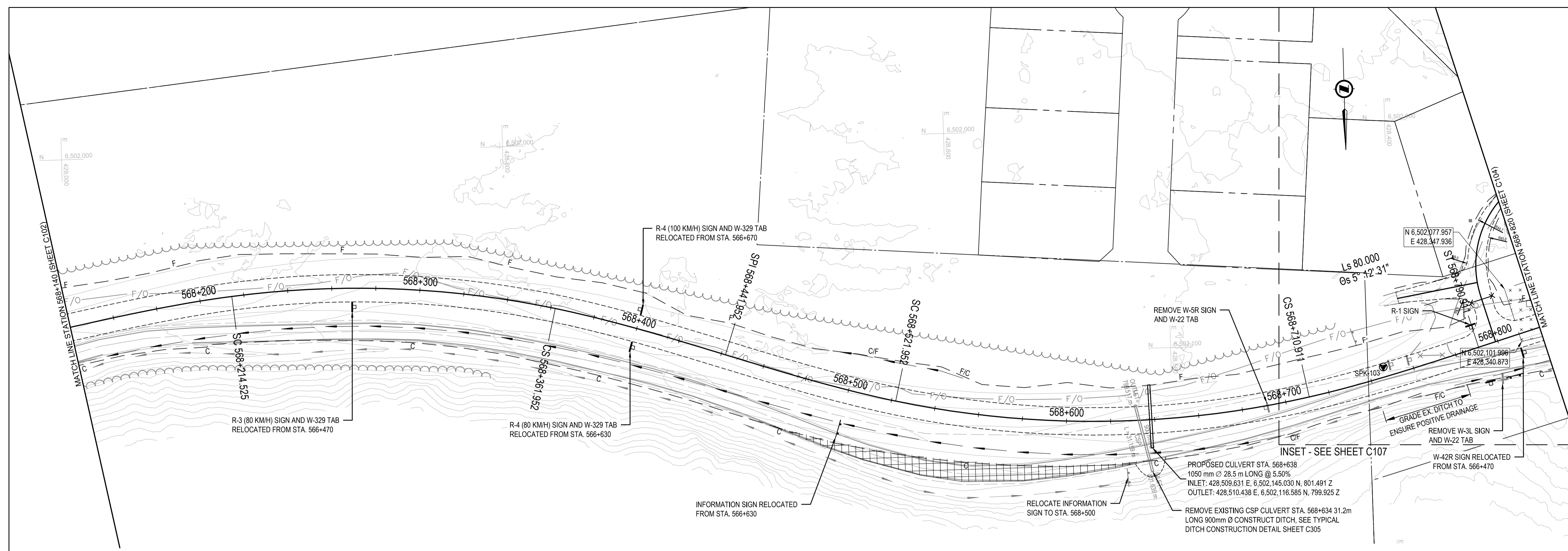
Project title/Titre du projet  
**KM 568 TO KM 573  
 (TETSA RIVER)  
 RECONSTRUCTION - PHASE 2  
 ALASKA HIGHWAY, BC**

Approved by/Approuvé par  
**S. LI**  
 Designed by/Concepté par  
**E. YANG / M. KELEHER**  
 Drawn by/Dessiné par  
**A. DEEPWELL**  
 PWGSC Project Manager/Administrateur de Projets TPSCG  
**A. TAHERI**  
 PWGSC Architectural and Engineering Resources Manager/  
 Ressources Architectural et de Directeur d'ingénierie, TPSCG

Client/client  
**Public Services and Procurement Canada**

Drawing title/Titre du dessin  
**HIGHWAY PLAN / PROFILE:  
 STA. 568+140 TO STA. 568+820**

Project No./No. du projet	Sheet/Fauille	Revision no./La Révision no.
<b>R.112220.002</b>	<b>C103</b>	<b>1</b>



Q:\Vancouver\Transportation\TRN\WHY\Projects\TRN\WHY\03172 Alaska Hwy Km 568 - 571 Realignement\CADD\Sheets Phase 2\C101-C106 PLAN PROFILE.dwg [C103] July 26, 2021 - 9:03:49 am (BY: DEEPWELL, ANDREW)

**ISSUED FOR ADDENDUM 003**

- GENERAL NOTES:
- DIMENSIONS, COORDINATES, ELEVATIONS ARE SHOWN IN METRES UNLESS NOTED.
  - UNLESS NOTED OTHERWISE, ALL EXISTING SIGNS AND POSTS WITHIN THE LIMITS OF WORK SHALL BE PROTECTED FROM DAMAGE.
  - LOCATION OF FIBRE OPTIC CABLE IS APPROXIMATE. CONTRACTOR IS RESPONSIBLE FOR VERIFYING EXACT LOCATION OF ALL UTILITIES PRIOR TO CONSTRUCTION.
  - UNLESS NOTED OTHERWISE, ALL EXISTING SIGNS AND POSTS WITHIN THE LIMITS OF CONSTRUCTION SHALL BE REMOVED AND STOCKPILED IN A LOCATION DIRECTED BY THE DEPARTMENTAL REPRESENTATIVE.
  - REFER TO TABLE ON SHEET C307 FOR SIGN LAYOUT DETAILS.

**LEGEND**  
 (PROFILE / SUPERELEVATION)  
 LT = LEFT SIDE  
 RT = RIGHT SIDE  
 NC = NORMAL CROWN  
 ST = SPIRAL TO TANGENT  
 RC = REVERSE CROWN  
 SC = SPIRAL TO CURVE  
 CS = CURVE TO SPIRAL

BNC = BEGIN NORMAL CROWN  
 ENC = END NORMAL CROWN  
 LC = LEVEL CROWN  
 BFS = BEGIN FULL SUPERELEVATION  
 RFS = REVERSE CROWN  
 EFS = END FULL SUPERELEVATION

**PROFILE:**  
 PROPOSED FINISHED GRADE  
 ORIGINAL GROUND

**SUPERELEVATION:**  
 LEFT HAND SIDE  
 RIGHT HAND SIDE



**DESIGN SPEED 80/100 km/h**

(H) Scale: 1:1000 (metres)  
 (V) Scale: 1:100 (metres)

Revision	Description/Description	Date/Date
1	ISSUED FOR ADDENDUM 003	21/07/26
0	ISSUED FOR TENDER	21/06/02

Client/client  
**Public Services and Procurement Canada**



Project title/Titre du projet  
**KM 568 TO KM 573 (TETSA RIVER) RECONSTRUCTION - PHASE 2 ALASKA HIGHWAY, BC**

Approved by/Approuvé par  
**S. LI**

Designed by/Concepté par  
**E. YANG / M. KELEHER**

Drawn by/Dessiné par  
**A. DEEPWELL**

PWSC Project Manager/Administrateur de Projets TPSC  
**A. TAHERI**

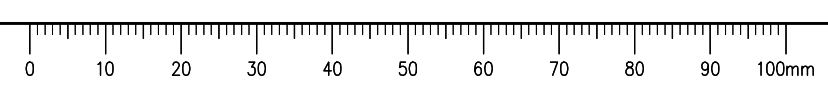
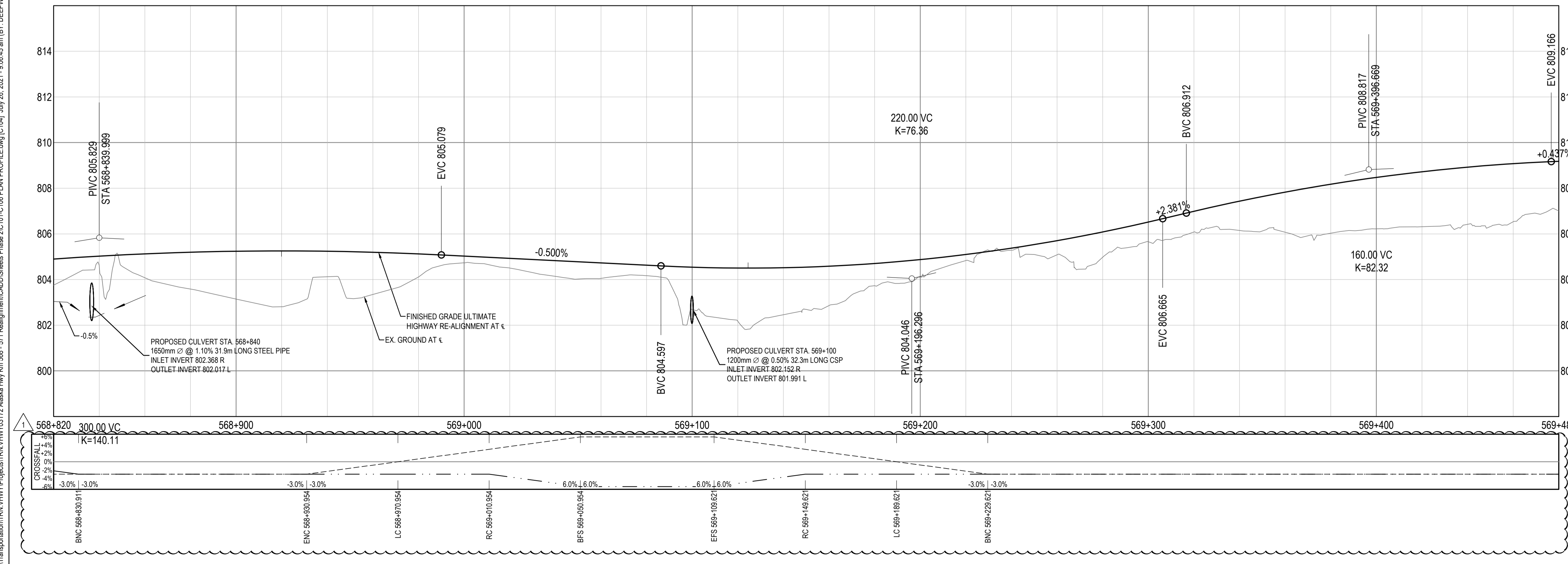
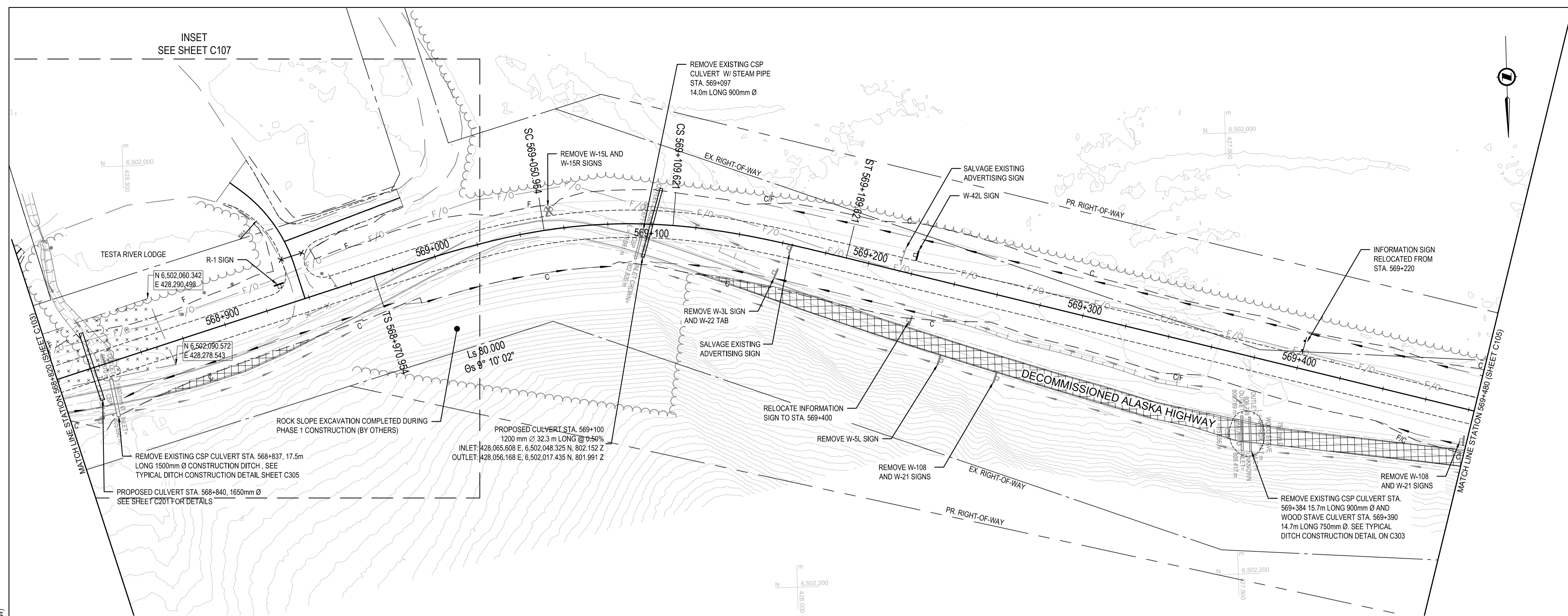
PWSC Architectural and Engineering Resources Manager/Ressources Architectural et de Directeur d'ingénierie, TPSC

Client/client  
**Public Services and Procurement Canada**

Drawing title/Titre du dessin

**HIGHWAY PLAN / PROFILE:  
 STA. 568+820 TO STA. 569+480**

Project No./No. du projet <b>R.112220.002</b>	Sheet/Fauille <b>C104</b>	Revision no./La Révision no. <b>1</b>
--	------------------------------	--



Q:\Vancouver\Transportation\TRN\HWY03172 Alaska Hwy Km 568 - 571 Realignment\CADD\Sheets Phase 2\C101-C106 PLAN PROFILE.dwg [C104] July 26, 2021 - 9:06:45 am (BY: DEEPWELL, ANDREW)





ISSUED FOR ADDENDUM 003

GENERAL NOTES:

- DIMENSIONS, COORDINATES, ELEVATIONS ARE SHOWN IN METRES UNLESS NOTED.
- UNLESS NOTED OTHERWISE, ALL EXISTING SIGNS AND POSTS WITHIN THE LIMITS OF WORK SHALL BE PROTECTED FROM DAMAGE.
- LOCATION OF FIBRE OPTIC CABLE IS APPROXIMATE. CONTRACTOR IS RESPONSIBLE FOR VERIFYING EXACT LOCATION OF ALL UTILITIES PRIOR TO CONSTRUCTION.
- UNLESS NOTED OTHERWISE, ALL EXISTING SIGNS AND POSTS WITHIN THE LIMITS OF CONSTRUCTION SHALL BE REMOVED AND STOCKPILED IN A LOCATION DIRECTED BY THE DEPARTMENTAL REPRESENTATIVE.
- REFER TO TABLE ON SHEET C307 FOR SIGN LAYOUT DETAILS.

LEGEND

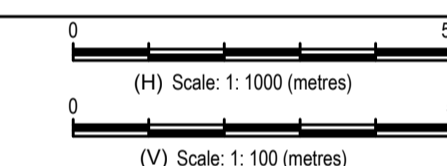
- (PROFILE / SUPERELEVATION)  
 LT = LEFT SIDE  
 RT = RIGHT SIDE  
 NC = NORMAL CROWN  
 ST = SPIRAL TO TANGENT  
 RC = REVERSE CROWN  
 SC = SPIRAL TO CURVE  
 CS = CURVE TO SPIRAL
- BNC = BEGIN NORMAL CROWN  
 ENC = END NORMAL CROWN  
 LC = LEVEL CROWN  
 BFC = BEGIN FULL SUPERELEVATION  
 RFC = REVERSE CROWN  
 EFS = END FULL SUPERELEVATION

PROFILE:  
 PROPOSED FINISHED GRADE  
 ORIGINAL GROUND

SUPERELEVATION:  
 LEFT HAND SIDE  
 RIGHT HAND SIDE



DESIGN SPEED 100 km/h



Revision	Description/Description	Date/Date
1	ISSUED FOR ADDENDUM 003	21/07/26
0	ISSUED FOR TENDER	21/06/02

Client/client

Public Services and Procurement Canada



Project title/Titre du projet

**KM 568 TO KM 573  
(TETSA RIVER)  
RECONSTRUCTION - PHASE 2  
ALASKA HIGHWAY, BC**

Approved by/Approuvé par  
**S. LI**

Designed by/Concepté par  
**E. YANG / M. KELEHER**

Drawn by/Dessiné par  
**A. DEEPWELL**

PWSC Project Manager/Administrateur de Projets TPSCG  
**A. TAHERI**

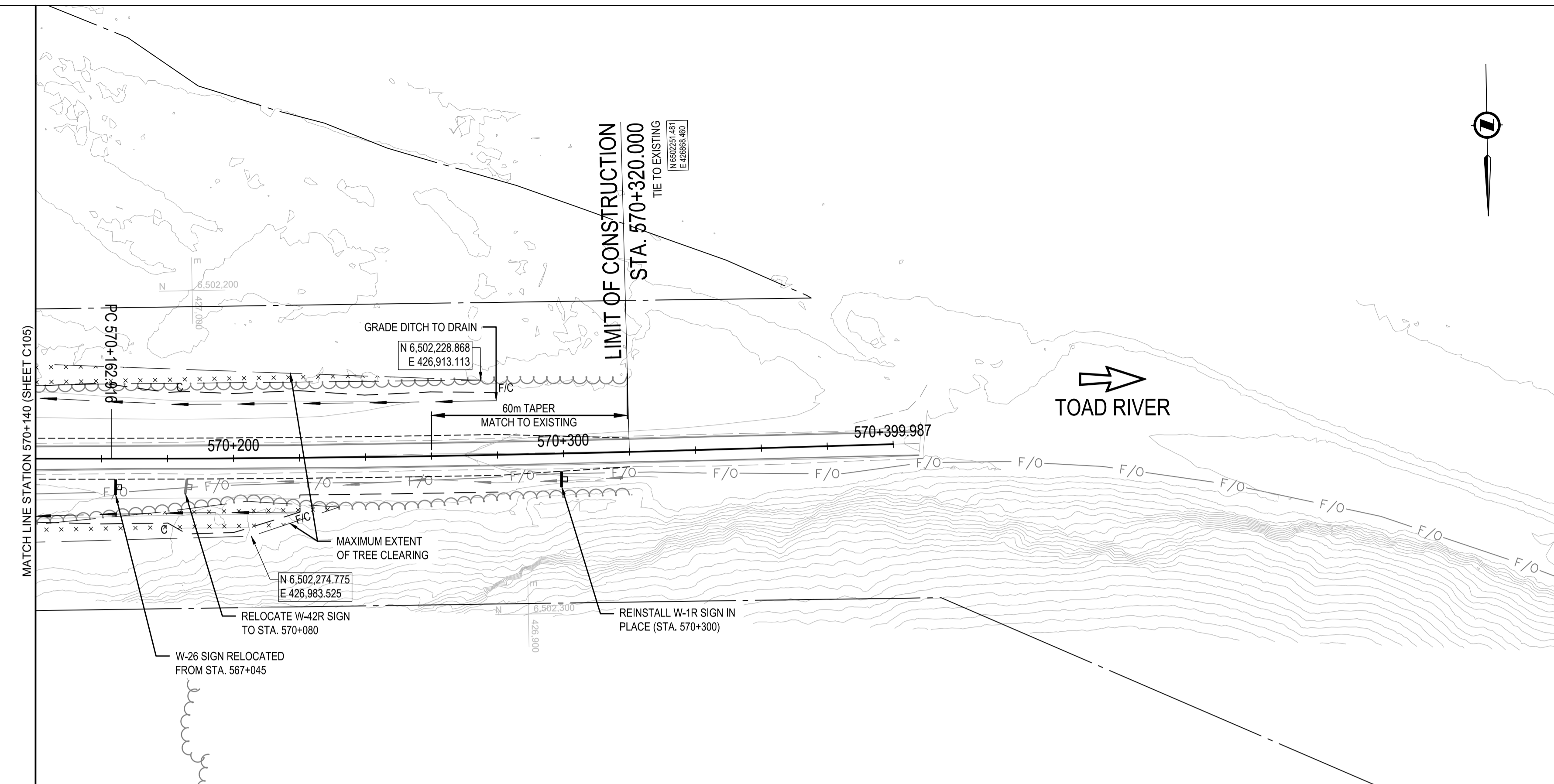
PWSC Architectural and Engineering Resources Manager/Ressources Architectural et de Directeur d'ingénierie, TPSCG

Client/client  
**Public Services and Procurement Canada**

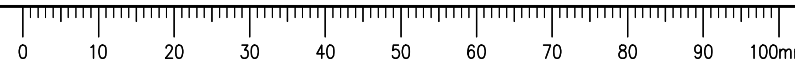
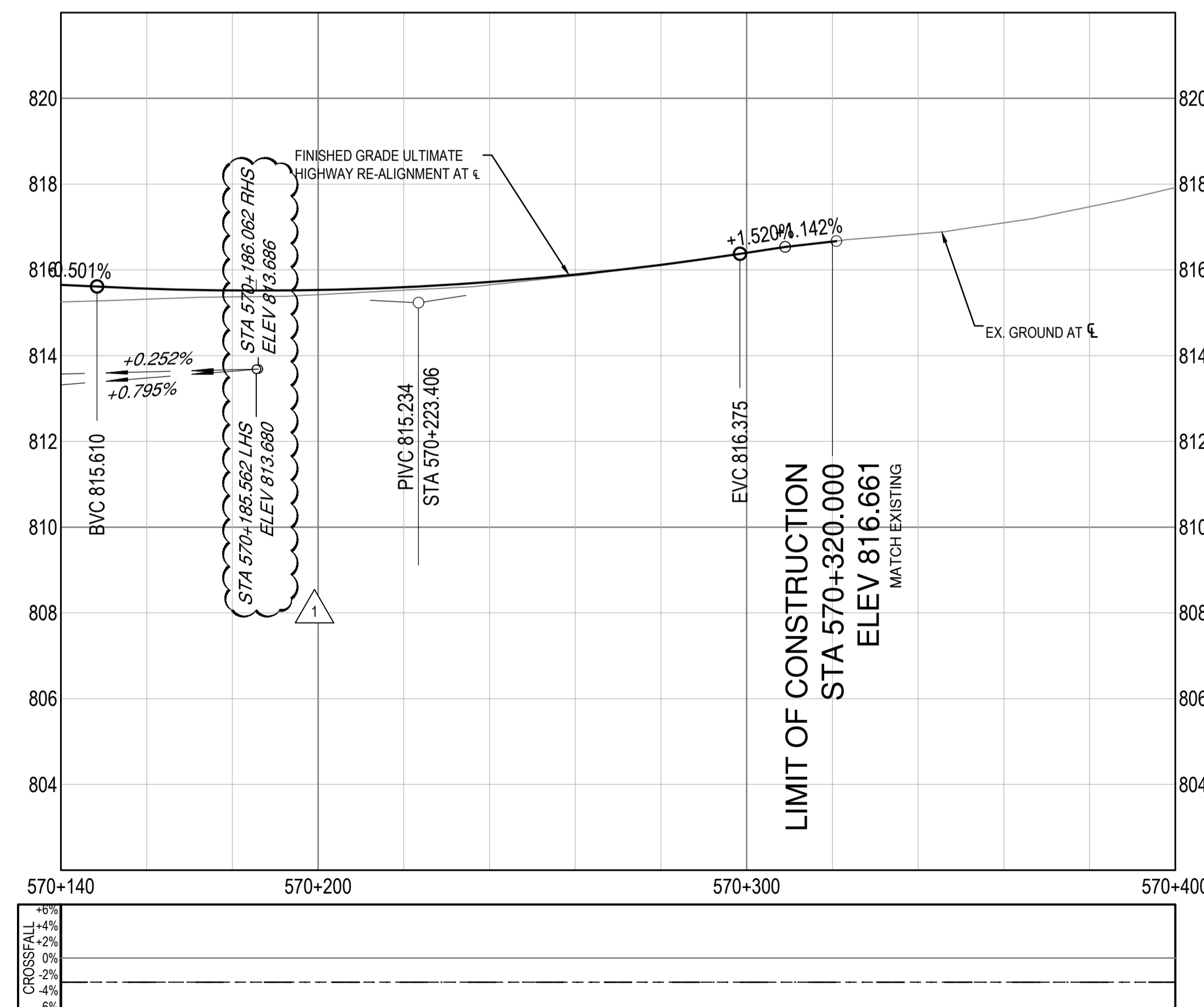
Drawing title/Titre du dessin

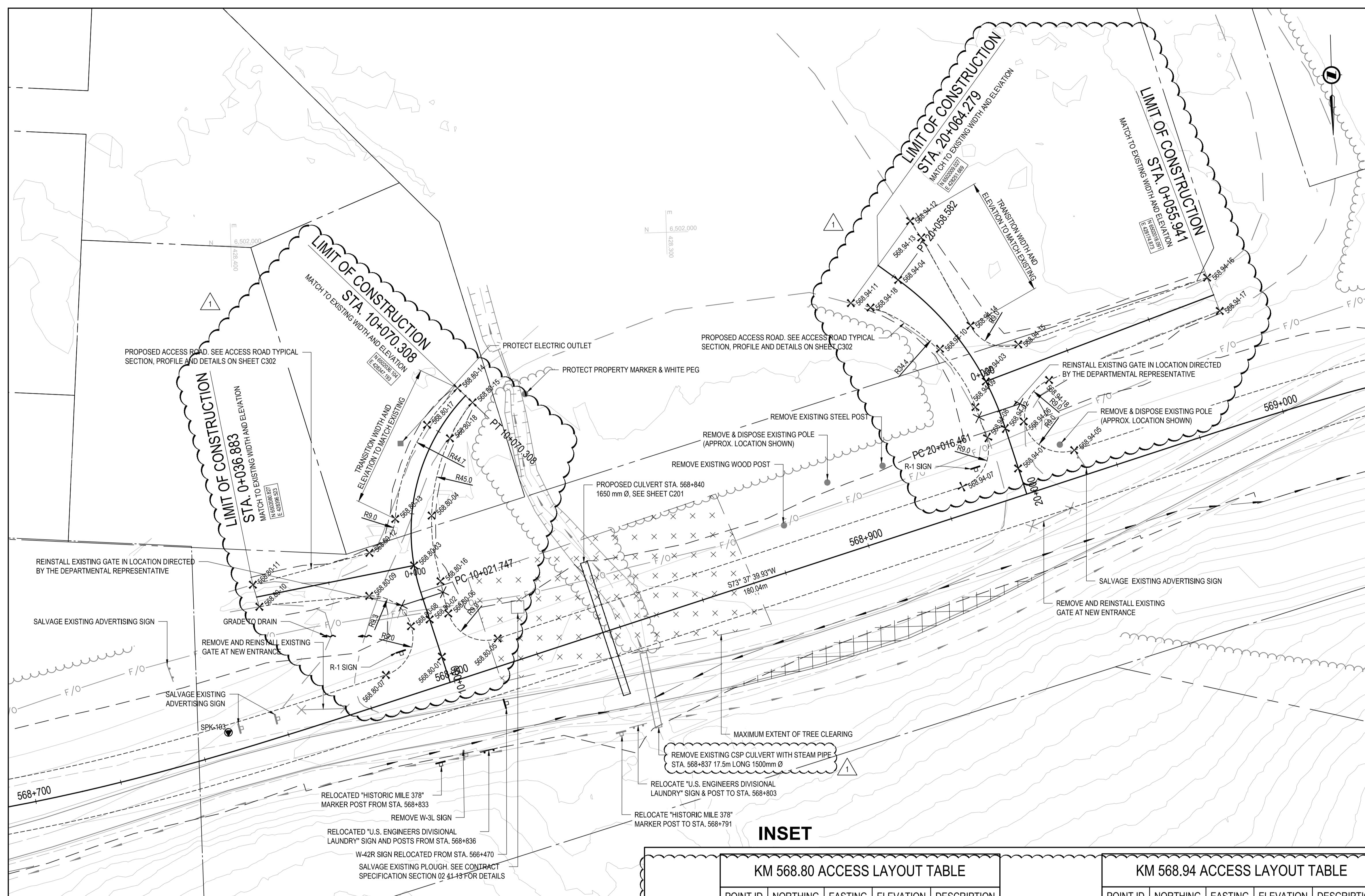
**HIGHWAY PLAN / PROFILE:  
STA. 570+140 TO STA. 570+320**

Project No./No. du projet	Sheet/Feuille	Revision no./La Révision no.
<b>R.112220.002</b>	<b>C106</b>	<b>1</b>



150.00 VC  
K=74.22

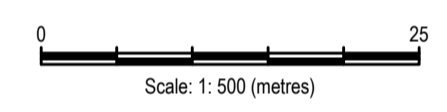




INSET

KM 568.80 ACCESS LAYOUT TABLE				
POINT ID	NORTHING	EASTING	ELEVATION	DESCRIPTION
568.80-01	6,502,095.768	428,354.425	804.545	CENTERLINE
568.80-02	6,502,087.143	428,356.959	804.116	CENTERLINE
568.80-03	6,502,074.650	428,360.161	803.211	CENTERLINE
568.80-04	6,502,063.277	428,356.310	802.259	GRAVEL EDGE
568.80-05	6,502,091.972	428,341.469	804.653	GRAVEL EDGE
568.80-06	6,502,085.874	428,352.641	803.981	GRAVEL EDGE
568.80-07	6,502,099.583	428,367.379	804.420	GRAVEL EDGE
568.80-08	6,502,088.568	428,361.297	803.969	GRAVEL EDGE
568.80-09	6,502,081.337	428,370.670	802.517	GRAVEL EDGE
568.80-10	6,502,083.070	428,395.928	801.964	GRAVEL EDGE
568.80-11	6,502,077.963	428,397.284	801.954	GRAVEL EDGE
568.80-12	6,502,071.436	428,370.244	802.641	GRAVEL EDGE
568.80-13	6,502,063.843	428,364.169	802.364	GRAVEL EDGE
568.80-14	6,502,034.293	428,348.975	801.480	GRAVEL EDGE
568.80-15	6,502,037.707	428,345.615	801.488	GRAVEL EDGE
568.80-16	6,502,079.593	428,354.487	803.522	GRAVEL EDGE
568.80-17	6,502,042.506	428,356.184	801.515	GRAVEL EDGE
568.80-18	6,502,045.651	428,351.216	801.519	GRAVEL EDGE

KM 568.94 ACCESS LAYOUT TABLE				
POINT ID	NORTHING	EASTING	ELEVATION	DESCRIPTION
568.94-01	6,502,056.550	428,220.935	805.092	CENTERLINE
568.94-02	6,502,047.303	428,223.580	804.650	CENTERLINE
568.94-03	6,502,036.383	428,227.739	803.831	CENTERLINE
568.94-04	6,502,012.503	428,247.156	801.711	CENTERLINE
568.94-05	6,502,052.740	428,207.932	805.125	GRAVEL EDGE
568.94-06	6,502,045.831	428,219.323	804.473	GRAVEL EDGE
568.94-07	6,502,060.353	428,233.844	805.074	GRAVEL EDGE
568.94-08	6,502,049.249	428,227.699	804.531	GRAVEL EDGE
568.94-09	6,502,042.177	428,230.297	803.999	GRAVEL EDGE
568.94-10	6,502,028.763	428,238.288	802.805	GRAVEL EDGE
568.94-11	6,502,017.486	428,258.157	801.273	GRAVEL EDGE
568.94-12	6,501,999.119	428,244.022	801.217	GRAVEL EDGE
568.94-13	6,502,004.095	428,240.951	801.386	GRAVEL EDGE
568.94-14	6,502,025.417	428,229.595	802.953	GRAVEL EDGE
568.94-15	6,502,028.100	428,220.044	803.349	GRAVEL EDGE
568.94-16	6,502,014.086	428,176.289	801.803	GRAVEL EDGE
568.94-17	6,502,021.828	428,173.610	801.812	GRAVEL EDGE
568.94-18	6,502,036.487	428,213.218	803.137	GRAVEL EDGE
568.94-19	6,502,019.064	428,252.481	801.446	GRAVEL EDGE



Revision	Description/Description	Date/Date
1	ISSUED FOR ADDENDUM 003	21/07/26
0	ISSUED FOR TENDER	21/06/02

Public Services and Procurement Canada



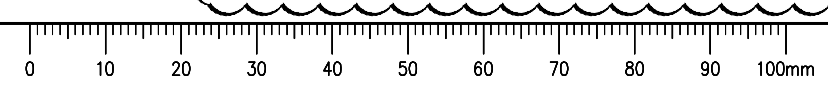
Project Title/Titre du projet  
**KM 568 TO KM 573 (TETSA RIVER) RECONSTRUCTION - PHASE 2 ALASKA HIGHWAY, BC**

Approved by/Approuvé par  
**S. LI**  
Designed by/Concepté par  
**E. YANG / M. KELEHER**  
Drawn by/Dessiné par  
**A. DEEPWELL**  
PWSC Project Manager/Administrateur de Projets TPSC  
**A. TAHERI**  
PWSC Architectural and Engineering Resources Manager/Ressources Architectural et de Directeur d'ingénierie, TPSC

Client/client  
**Public Services and Procurement Canada**  
Drawing Title/Titre du dessin  
**TETSA RIVER LODGE ACCESS PLAN**

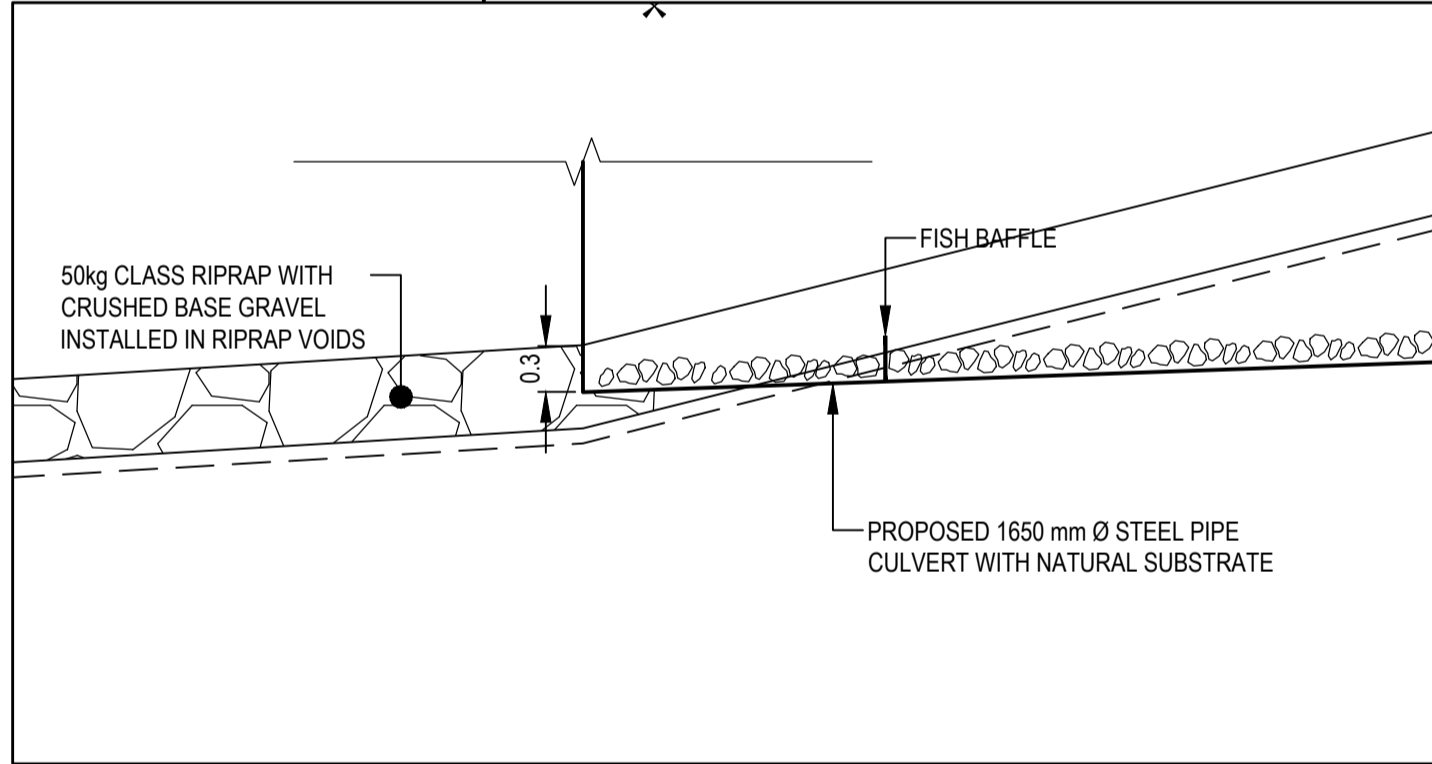
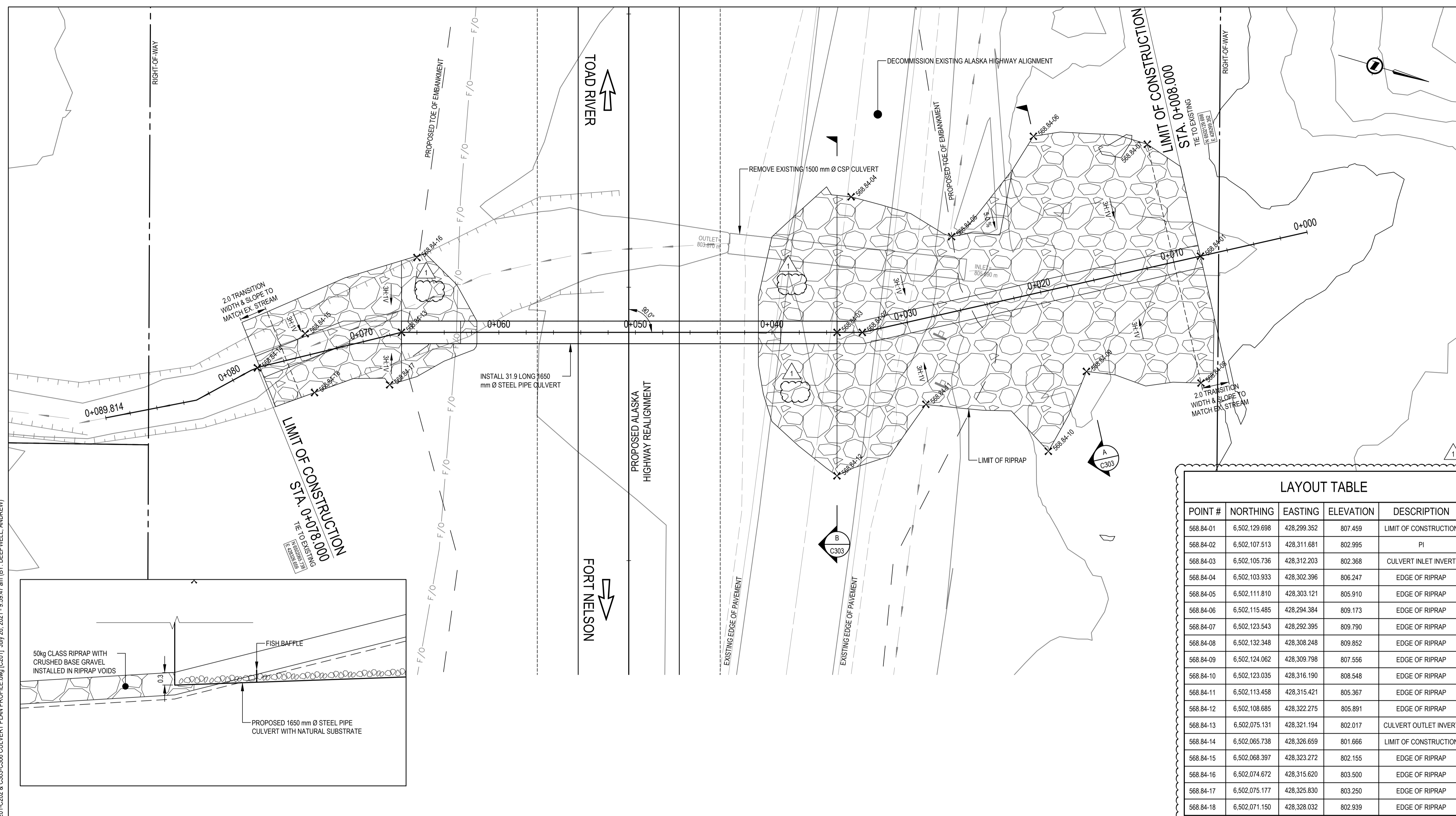
Project No./No. du projet	Sheet/Feuille	Revision No./La Révision no.
<b>R.112220.002</b>	<b>C107</b>	<b>1</b>

Q:\Vancouver\Transportation\TRN\HWY\Projects\TRN\HWY\03172 Alaska Hwy km 568 - 571 Realignment\CADD\Sheets Phase 2\C101-C106 PLAN PROFILE.dwg [C:107] July 26, 2021 - 9:05:50 am (BY: DEEPWELL, ANDREW)

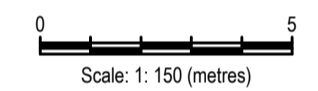


**ISSUED FOR ADDENDUM 003**

GENERAL NOTES:  
 1. DIMENSIONS, COORDINATES, ELEVATIONS ARE SHOWN IN METRES UNLESS NOTED.  
 2. LOCATION OF FIBRE OPTIC CABLE IS APPROXIMATE. CONTRACTOR IS RESPONSIBLE FOR VERIFYING EXACT LOCATION OF ALL UTILITIES PRIOR TO CONSTRUCTION.



LAYOUT TABLE				
POINT #	NORTHING	EASTING	ELEVATION	DESCRIPTION
568.84-01	6,502,129.698	428,299.352	807.459	LIMIT OF CONSTRUCTION
568.84-02	6,502,107.513	428,311.681	802.995	PI
568.84-03	6,502,105.736	428,312.203	802.368	CULVERT INLET INVERT
568.84-04	6,502,103.933	428,302.396	806.247	EDGE OF RIPRAP
568.84-05	6,502,111.810	428,303.121	805.910	EDGE OF RIPRAP
568.84-06	6,502,115.485	428,294.384	809.173	EDGE OF RIPRAP
568.84-07	6,502,123.543	428,292.395	809.790	EDGE OF RIPRAP
568.84-08	6,502,132.348	428,308.248	809.852	EDGE OF RIPRAP
568.84-09	6,502,124.062	428,309.798	807.556	EDGE OF RIPRAP
568.84-10	6,502,123.035	428,316.190	808.548	EDGE OF RIPRAP
568.84-11	6,502,113.458	428,315.421	805.367	EDGE OF RIPRAP
568.84-12	6,502,108.685	428,322.275	805.891	EDGE OF RIPRAP
568.84-13	6,502,075.131	428,321.194	802.017	CULVERT OUTLET INVERT
568.84-14	6,502,065.738	428,326.659	801.666	LIMIT OF CONSTRUCTION
568.84-15	6,502,068.397	428,323.272	802.155	EDGE OF RIPRAP
568.84-16	6,502,074.672	428,315.620	803.500	EDGE OF RIPRAP
568.84-17	6,502,075.177	428,325.830	803.250	EDGE OF RIPRAP
568.84-18	6,502,071.150	428,328.032	802.939	EDGE OF RIPRAP



Revision	Description/Description	Date/Date
1	ISSUED FOR AMENDMENT 003	21/07/26
0	ISSUED FOR TENDER	21/06/02

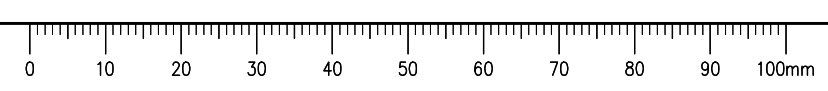
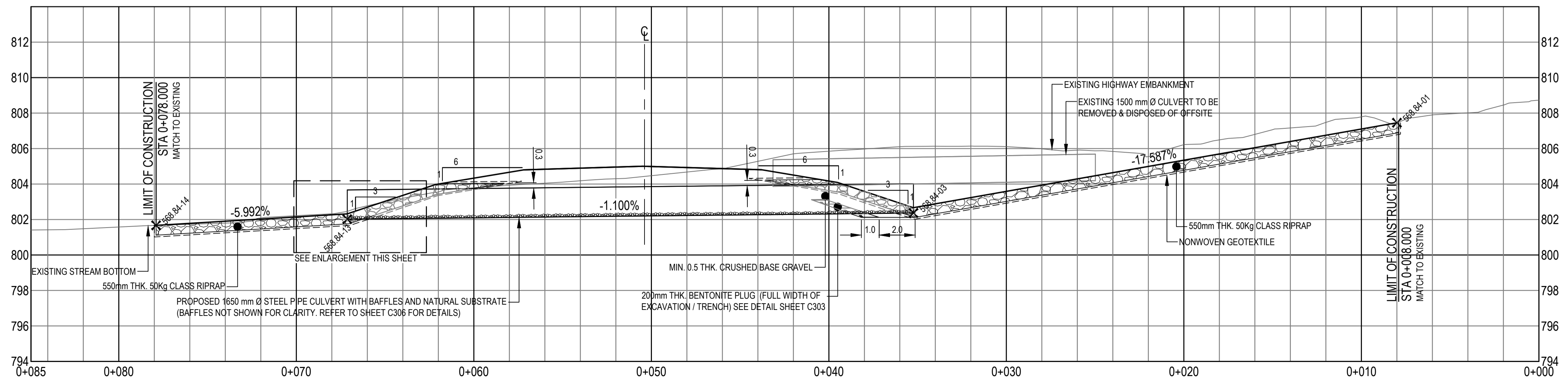
Client/client: **Public Services and Procurement Canada**



Project title/Titre du projet: **KM 568 TO KM 573 (TETSA RIVER) RECONSTRUCTION - PHASE 2 ALASKA HIGHWAY, BC**

Approved by/Approuvé par: **S. LI**  
 Designed by/Concepté par: **E. YANG / M. KELEHER**  
 Drawn by/Dessiné par: **A. DEEPWELL**  
 PWGSC Project Manager/Administrateur de Projets TPSC: **A. TAHERI**  
 PWGSC Architectural and Engineering Resources Manager/Ressources Architectural et de Directeur d'ingénierie, TPSC

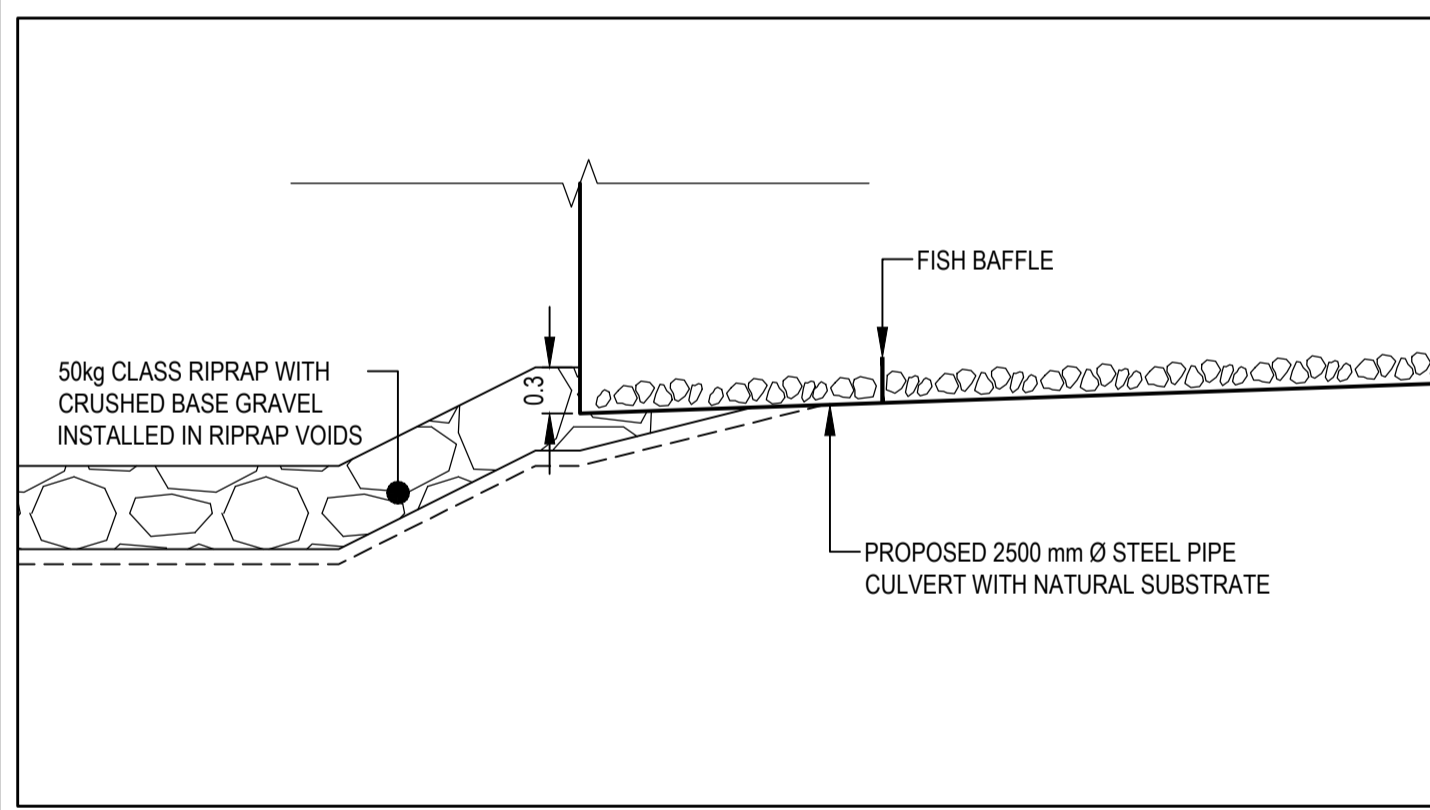
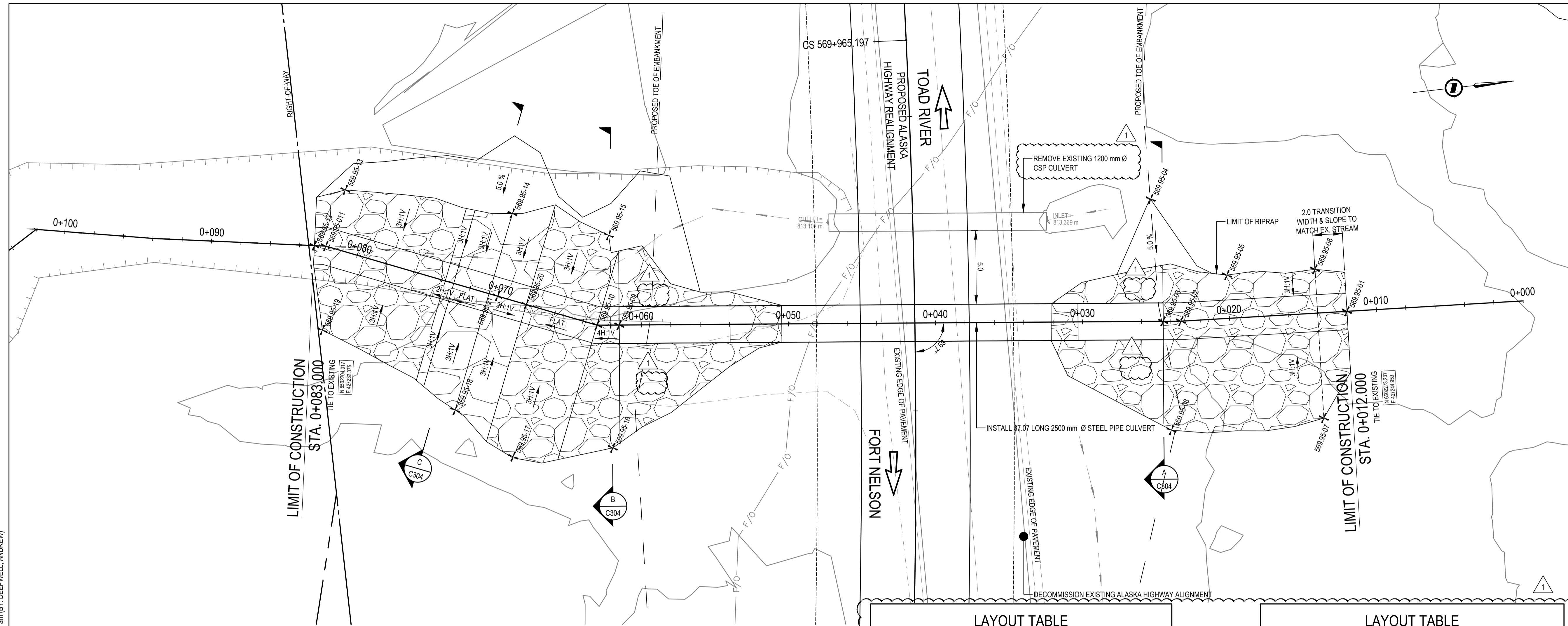
Client/client: **Public Services and Procurement Canada**  
 Drawing title/Titre du dessin: **CULVERT STA. 568+840 PLAN / PROFILE**



Q:\Vancouver\Transportation\TRN\HWY03172 Alaska Hwy Km 568 - 571 Realignment\CADD\Sheets Phase 2\C201-C202 & C303-C306 CULVERT PLAN PROFILE.dwg [C201] July 26, 2021 - 9:59:47 am (BY: DEEPWELL, ANDREW)

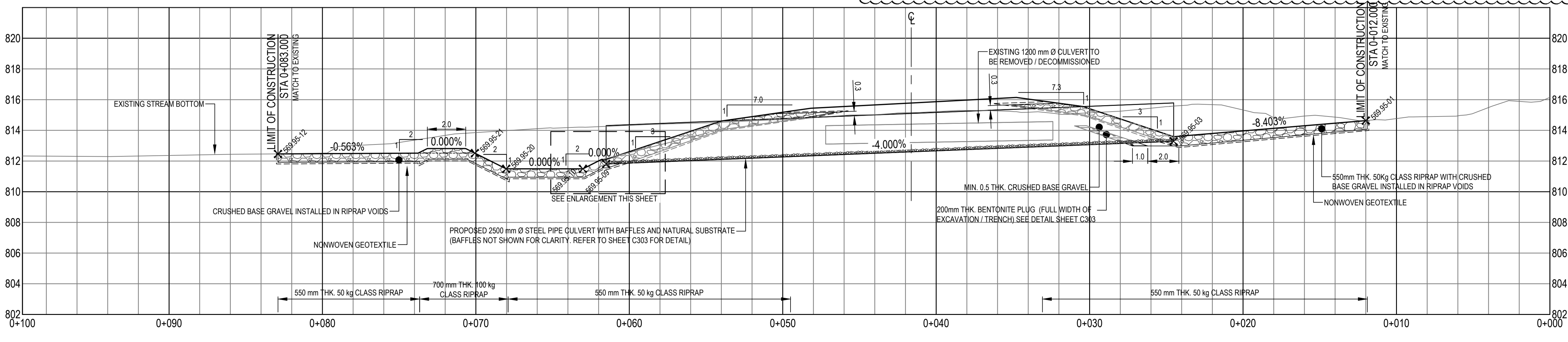
ISSUED FOR ADDENDUM 003

- GENERAL NOTES:
- DIMENSIONS, COORDINATES, ELEVATIONS ARE SHOWN IN METRES UNLESS NOTED.
  - LOCATION OF FIBRE OPTIC CABLE IS APPROXIMATE. CONTRACTOR IS RESPONSIBLE FOR VERIFYING EXACT LOCATION OF ALL UTILITIES PRIOR TO CONSTRUCTION.



POINT #	NORTHING	EASTING	ELEVATION	DESCRIPTION
569.95-01	6,502,273.237	427,244.959	814.634	LIMIT OF CONSTRUCTION
569.95-02	6,502,261.949	427,244.315	813.684	PI
569.95-03	6,502,260.742	427,244.182	813.282	CULVERT INLET INVERT
569.95-04	6,502,260.869	427,235.837	814.888	EDGE OF RIPRAP
569.95-05	6,502,265.417	427,241.567	814.412	EDGE OF RIPRAP
569.95-06	6,502,271.410	427,241.874	815.007	EDGE OF RIPRAP
569.95-07	6,502,270.833	427,251.982	816.432	EDGE OF RIPRAP
569.95-08	6,502,259.943	427,251.451	815.602	EDGE OF RIPRAP
569.95-09	6,502,223.974	427,240.140	811.802	CULVERT OUTLET INVERT
569.95-10	6,502,222.486	427,239.977	811.501	PI / GRADE BREAK
569.95-11	6,502,204.786	427,232.500	812.464	PI
569.95-12	6,502,204.017	427,232.375	812.460	LIMIT OF CONSTRUCTION
569.95-13	6,502,206.562	427,228.863	813.396	EDGE OF RIPRAP
569.95-14	6,502,217.639	427,231.771	814.286	EDGE OF RIPRAP
569.95-15	6,502,223.942	427,233.977	813.107	EDGE OF RIPRAP

POINT #	NORTHING	EASTING	ELEVATION	DESCRIPTION
569.95-16	6,502,222.575	427,248.379	814.369	EDGE OF RIPRAP
569.95-17	6,502,215.770	427,248.184	814.467	EDGE OF RIPRAP
569.95-18	6,502,213.331	427,241.971	814.195	EDGE OF RIPRAP
569.95-19	6,502,204.737	427,238.324	813.855	EDGE OF RIPRAP
569.95-20	6,502,217.886	427,238.034	811.492	GRADE BREAK
569.95-21	6,502,215.708	427,237.113	812.662	LOW FLOW NOTCH INVERT



Scale: 1:150 (metres)

Revision	Description/Description	Date/Date
1	ISSUED FOR AMENDMENT 003	21/07/26
0	ISSUED FOR TENDER	21/06/02

Client/client: Public Services and Procurement Canada



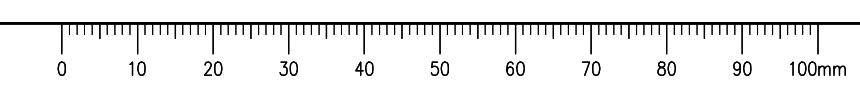
Project title/Titre du projet: **KM 568 TO KM 573 (TETSA RIVER) RECONSTRUCTION - PHASE 2 ALASKA HIGHWAY, BC**

Approved by/Approve par: **S. LI**  
 Designed by/Concept par: **E. YANG / M. KELEHER**  
 Drawn by/Dessine par: **A. DEEPWELL**  
 PWGSC Project Manager/Administrateur de Projets TPSC: **A. TAHERI**  
 PWGSC, Architectural and Engineering Resources Manager/Ressources Architectural et de Directeur d'ingénierie, TPSC

Client/client: **Public Services and Procurement Canada**  
 Drawing title/Titre du dessin: **CULVERT STA. 569+950 PLAN / PROFILE**

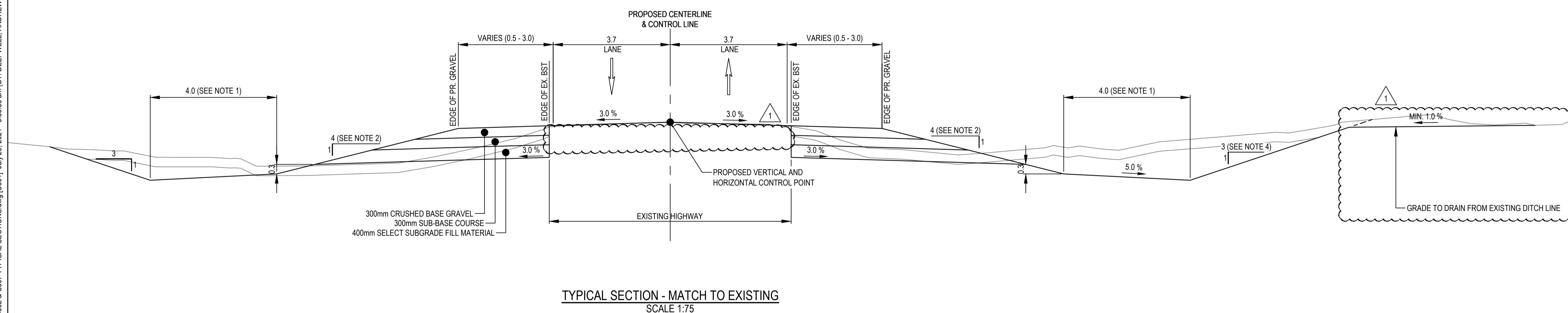
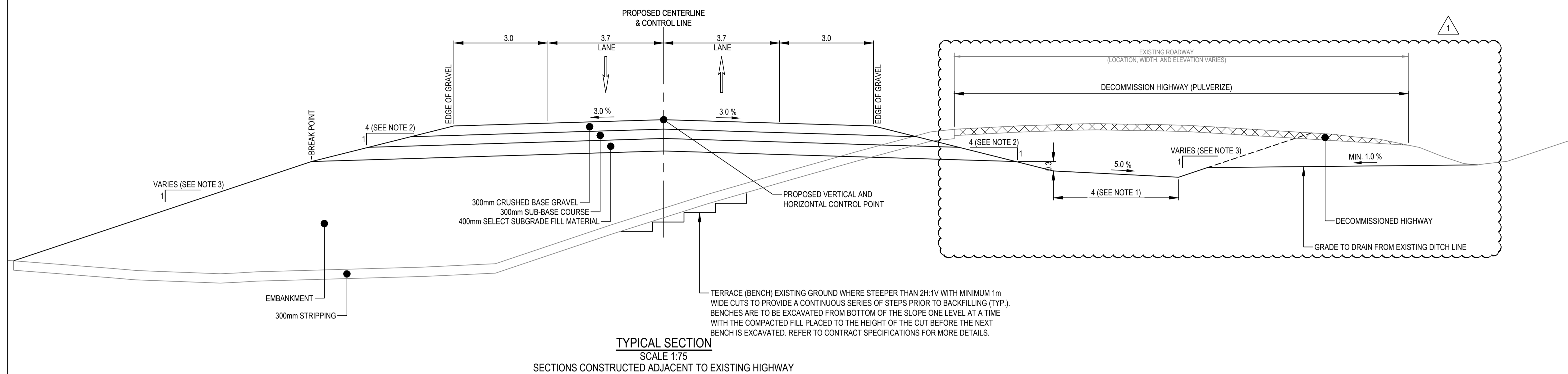
Project No./No. du projet	Sheet/Fauille	Revision no./La Révision no.
<b>R.112220.002</b>	<b>C202</b>	<b>1</b>

Q:\Vancouver\Transportation\TRN\HWY03172 Alaska Hwy Km 568 - 571 Realignment\CADD\Sheets Phase 2\C201-C202 & C303-C306 CULVERT PLAN PROFILE.dwg [C202] July 26, 2021 - 11:23:21 am [BY: DEEPWELL, ANDREW]

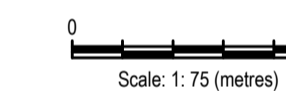


ISSUED FOR ADDENDUM 003

GENERAL NOTES:  
1. DIMENSIONS, COORDINATES, ELEVATIONS ARE SHOWN IN METRES UNLESS NOTED.



- NOTES:
- DITCH WIDTHS VARY IN THE FOLLOWING LOCATIONS:  
- 2m WIDE RIGHT HAND SIDE  
STA. 566+960 TO STA. 567+060  
STA. 567+360 TO STA. 567+440  
STA. 567+560 TO STA. 567+820  
STA. 568+710 TO STA. 568+988  
STA. 568+988 TO STA. 569+080  
- 2m WIDE LEFT HAND SIDE  
STA. 566+960 TO STA. 567+060
  - FLATTEN SLOPES VARY IN THE FOLLOWING LOCATIONS:  
- STA. 568+840 STEEL PIPE CULVERT  
4H:1V - STA. 568+800 TO STA. 568+820  
6H:1V - STA. 568+820 TO STA. 568+860  
6H:1V TO 4H:1V - STA. 568+860 TO STA. 568+880  
- STA. 569+950 STEEL PIPE CULVERT  
4H:1V TO 6H:1V - STA. 569+510 TO STA. 569+530  
6H:1V - STA. 569+530 TO STA. 569+970  
6H:1V TO 4H:1V - STA. 569+970 TO STA. 569+990  
SEE SHEETS C201 AND C202 FOR DETAILS
  - 4H:1V TYPICAL FILL SLOPES. 3H:1V FILL SLOPE IN THE FOLLOWING HIGH FILL AREAS:  
- RIGHT HAND SIDE 3H:1V  
STA. 567+240 TO STA. 567+300  
- LEFT HAND SIDE 3H:1V  
STA. 567+300 TO STA. 568+240  
STA. 568+960 TO STA. 569+100
  - STEEPEN DITCH BACKSLOPES TO 2H:1V IN THE FOLLOWING LOCATIONS:  
- RIGHT HAND SIDE  
STA. 567+560 TO STA. 567+820  
STA. 568+800 TO STA. 568+960  
STA. 569+600 TO STA. 569+680  
STA. 570+140 TO STA. 570+220



Revision	Description/Description	Date/Date
1	ISSUED FOR ADDENDUM 003	21/07/26
0	ISSUED FOR TENDER	21/06/02

Client/client  
**Public Services and Procurement Canada**



Project title/Titre du projet  
**KM 568 TO KM 573 (TETSA RIVER) RECONSTRUCTION - PHASE 2 ALASKA HIGHWAY, BC**

Approved by/Approuvé par  
**S. LI**  
Designed by/Concepté par  
**E. YANG / M. KELEHER**  
Drawn by/Dessiné par  
**A. DEEPWELL**  
PWGSC Project Manager/Administrateur de Projets TPSCG  
**A. TAHERI**  
PWGSC, Architectural and Engineering Resources Manager/Ressources Architectural et de Directeur d'ingénierie, TPSCG

Client/client  
**Public Services and Procurement Canada**  
Drawing title/Titre du dessin  
**HIGHWAY TYPICAL SECTIONS**

Project No./No. du projet	Sheet/Feuille	Revision no./La Révision no.
<b>R.112220.002</b>	<b>C301</b>	<b>1</b>

Q:\Vancouver\Transportation\TRN\HWY03172 Alaska Hwy Km 568 - 571 Realignment\CADD\Sheets Phase 2\C301-C302 & C307 TYPICAL SECTIONS.dwg [C301] July 26, 2021 - 6:55:53 am (BY: DEEPWELL, ANDREW)

