

Requisition No. EZ899- 220723/A

The following changes in the tender documents are effective immediately. This addendum will form part of the Contract documents.

1. Specifications, Appendices

1. Section 01 10 01 General Requirements, Paragraph 1.18 Coordination. Add:

1.18.4

Specifications and drawings may include reference to Contractor, trades, sub-contractor, electrical contractor, mechanical contractor or similar. These are noted for convenience. In all cases the Contractor is responsible for performance of the Contract as described in the Specifications and Drawings.

2. Add attached new Appendix D: Existing Site Photos for reference of general existing conditions. Updated existing conditions are to be confirmed by the Contractor prior to construction.

2. Drawings

- o No Revisions this Addendum.

END OF ADDENDUM

READ JONES CHRISTOFFERSEN LTD.

Bret Depner, BAsC. (Hons.), EIT
Design Engineer

Penticton Regional Airport
Penticton ATB Roofing & Building Envelope Project
Project: R.105676.001

APPENDIX D

Existing Site Photos

The following photos are to be used in addition with the Issued for Tender package for added context. The photos were taken as part of a 2019 Building Envelope Condition Assessment report by RJC Engineers and are to be used for reference of general conditions only. Construction from a 2018 project was in progress at the time of review, but is now essentially complete. Existing conditions are to be confirmed by the Contractor prior to construction.

TABLE A1 – GENERAL OBSERVATIONS	
<p>August 23, 2019</p> <p>General window overview (east wall).</p>	 <p>Photo 1</p>

TABLE A1 – GENERAL OBSERVATIONS

August 23, 2019

General overview of windows at transition between existing and new construction.



Photo 2

August 23, 2019

General window overview near the front entrance vestibule (west wall).



Photo 3

TABLE A1 – GENERAL OBSERVATIONS

August 23, 2019

Window sill deterioration for window near the vestibule (west wall).



Photo 4

TABLE A1 – GENERAL OBSERVATIONS

September 13,
2019

General
overview of
double swing
door on south
end of building.



Photo 5

TABLE A1 – GENERAL OBSERVATIONS

September 13,
2019

General
overview of
double
automatic
sliding door at
main entrance.



Photo 6

TABLE A1 – GENERAL OBSERVATIONS

September 13,
2019

General
overview of air
side private pilot
entrance swing
door at south
end of building.



Photo 7

TABLE A1 – GENERAL OBSERVATIONS

August 23, 2019

General wall
overview (west
wall).



Photo 8

August 23, 2019

Zoomed in
general wall
overview (west
wall).



Photo 9

TABLE A1 – GENERAL OBSERVATIONS

August 23, 2019

Cracks in vertical cedar siding on west wall.



Photo 10

August 23, 2019

General wall overview (south wall).



Photo 11

TABLE A1 – GENERAL OBSERVATIONS

August 23, 2019

Zoomed in
general wall
overview with
aluminum
frame door
(south wall).



Photo 12

TABLE A1 – GENERAL OBSERVATIONS

August 23, 2019

Nav Canada
tower.



Photo 13

TABLE A1 – GENERAL OBSERVATIONS

August 23, 2019

General roof
overview (facing
south).



Photo 14

August 23, 2019

General roof
overview (facing
northwest).



Photo 15

TABLE A1 – GENERAL OBSERVATIONS

August 23, 2019

General upper
roof overview
(facing south).



Photo 16

TABLE A1 – GENERAL OBSERVATIONS

August 23, 2019

Skylight with
failed Insulated
Glass Unit
(IGU).



Photo 17

TABLE A1 – GENERAL OBSERVATIONS

August 23, 2019

Organic growth
on mid roof
parapet.

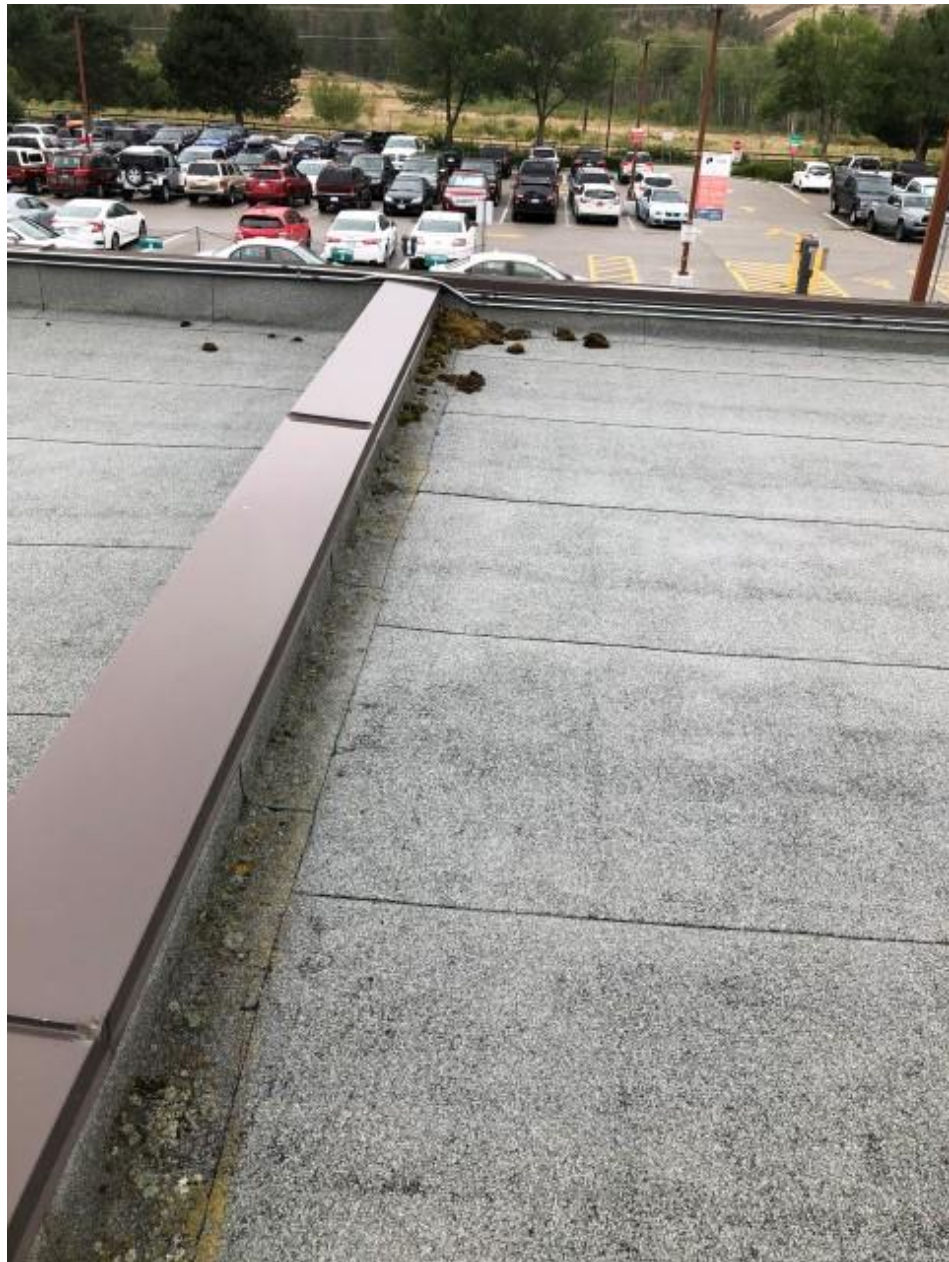


Photo 18

TABLE A1 – GENERAL OBSERVATIONS

August 23, 2019

Antenna mount
screwed into
roof.



Photo 19

TABLE A1 – GENERAL OBSERVATIONS

August 23, 2019

Crack near
drain sump on
south end of
roof.



Photo 20

TABLE A1 – GENERAL OBSERVATIONS

August 23, 2019

General roof assembly.



Photo 21

August 23, 2019

Lap seam deterioration in the roof membrane from blistering.



Photo 22

TABLE A1 – GENERAL OBSERVATIONS

August 23, 2019

Interior overview of the clerestory windows. The ceiling is now enclosed and the other renovations in this area are finished. The clerestory windows remain in scope for this project.



Photo 23

TABLE A1 – GENERAL OBSERVATIONS

August 23, 2019

Exterior
overview of
clerestory
windows.



Photo 24

TABLE A1 – GENERAL OBSERVATIONS

August 23, 2019

General roof
overview (facing
north).



Photo 25

August 23, 2019

Overview of
southeast
portion of lower
roof (facing
east).



Photo 26

TABLE A1 – GENERAL OBSERVATIONS

August 23, 2019

Metal panel and flashing at fire separation wall.



Photo 27

TABLE A1 – GENERAL OBSERVATIONS

August 23, 2019

Ongoing construction of eastern addition. The eastern addition is now complete.



Photo 28

TABLE A1 – GENERAL OBSERVATIONS

August 23, 2019

Parapet wall
between
existing and
new roof
section.



Photo 29

TABLE A1 – GENERAL OBSERVATIONS

August 23, 2019

General overview of east elevation between the hold room and the new addition. The new addition is now complete.



Photo 30