

SMALL CRAFT HARBOURS
ONTARIO AND PRAIRIE REGION



- NOTES:
- ALL DIMENSIONS IN MILLIMETRES UNLESS OTHERWISE STATED.
 - ALL ELEVATIONS AND SOUNDINGS ARE IN METRES UNLESS OTHERWISE STATED.
 - ELEVATIONS ARE GIVEN USING THE CANADIAN GEODETIC VERTICAL DATUM OF 1928 (CGVD28).
 - EXISTING LAUNCH RAMP TO BE REMOVED:
 - ONE APPROXIMATELY 3.658m x 6.096m x 0.152m CONCRETE SLAB
 - APPROXIMATELY 16 PRE-CAST PADS AT 3.048m x 0.355m x 0.203m
 - TIMBER PILES ARE APPROXIMATELY Ø305, DEPTH UNKNOWN.
 - TIMBER PILES TO BE DISPOSED OF OFF SITE AT AN APPROVED LOCATION.

REVISIONS:	DATE:
0 ISSUED FOR TENDER	JULY 2021

SCALE: AS SHOWN	CLASS:
--------------------	--------

PROJECT:
LAUNCH RAMP RECONSTRUCTION

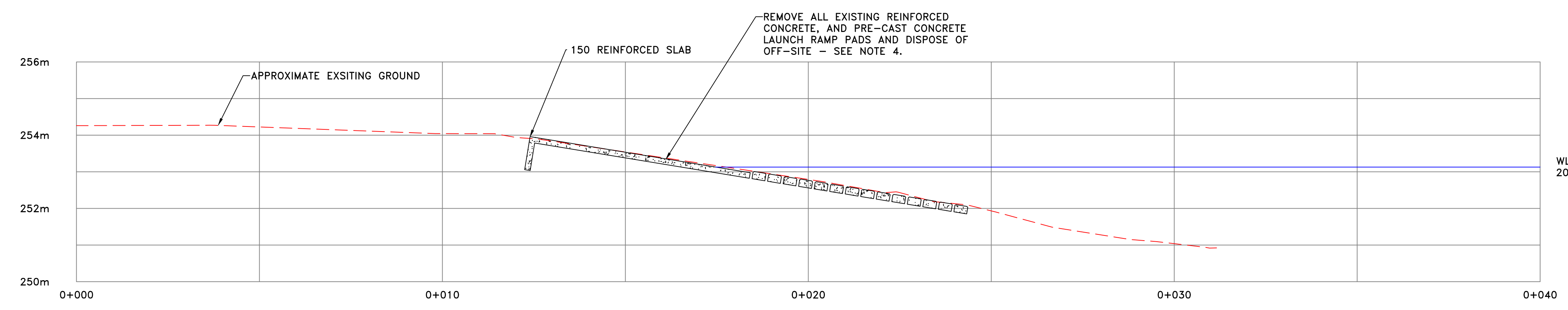
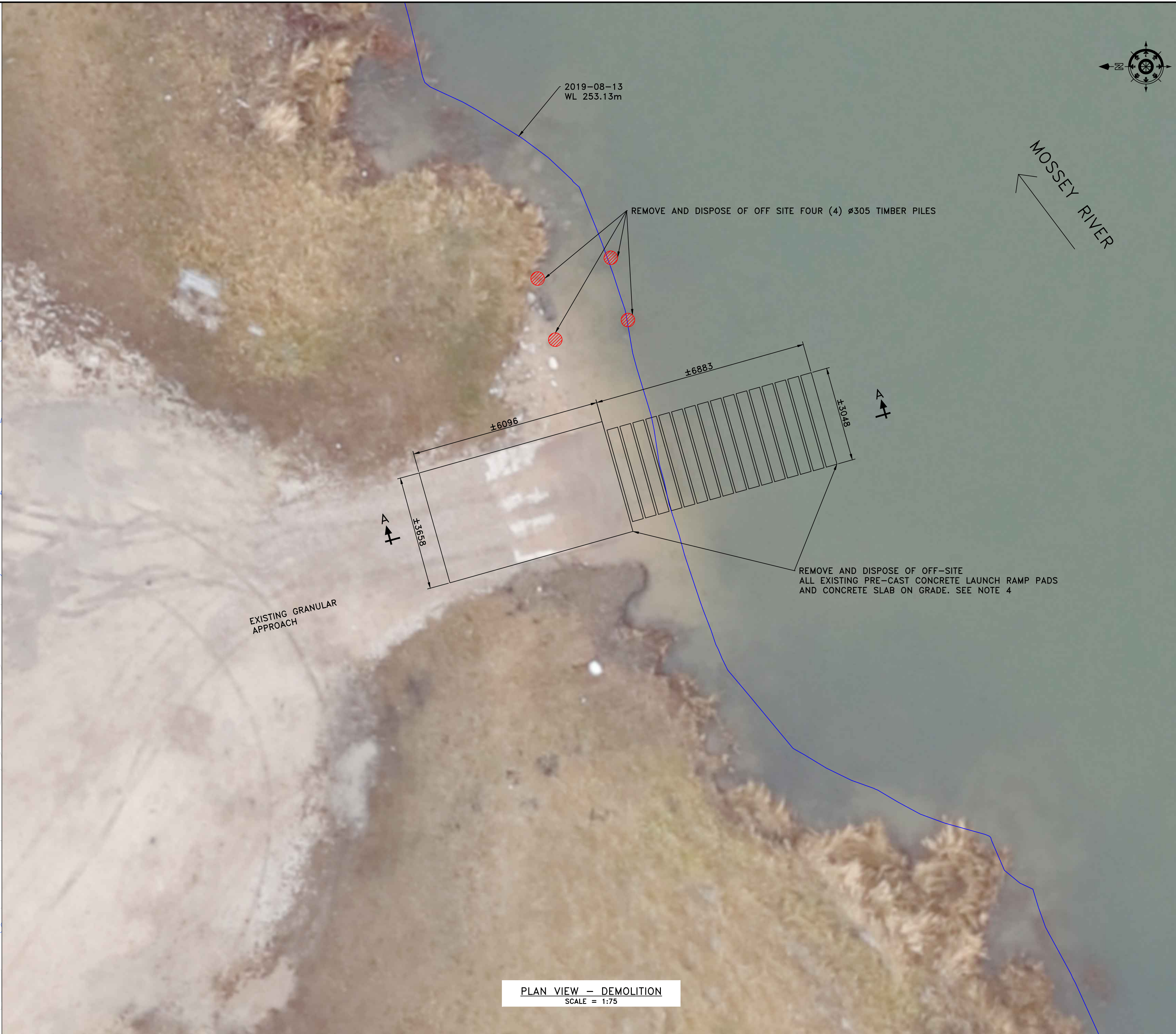
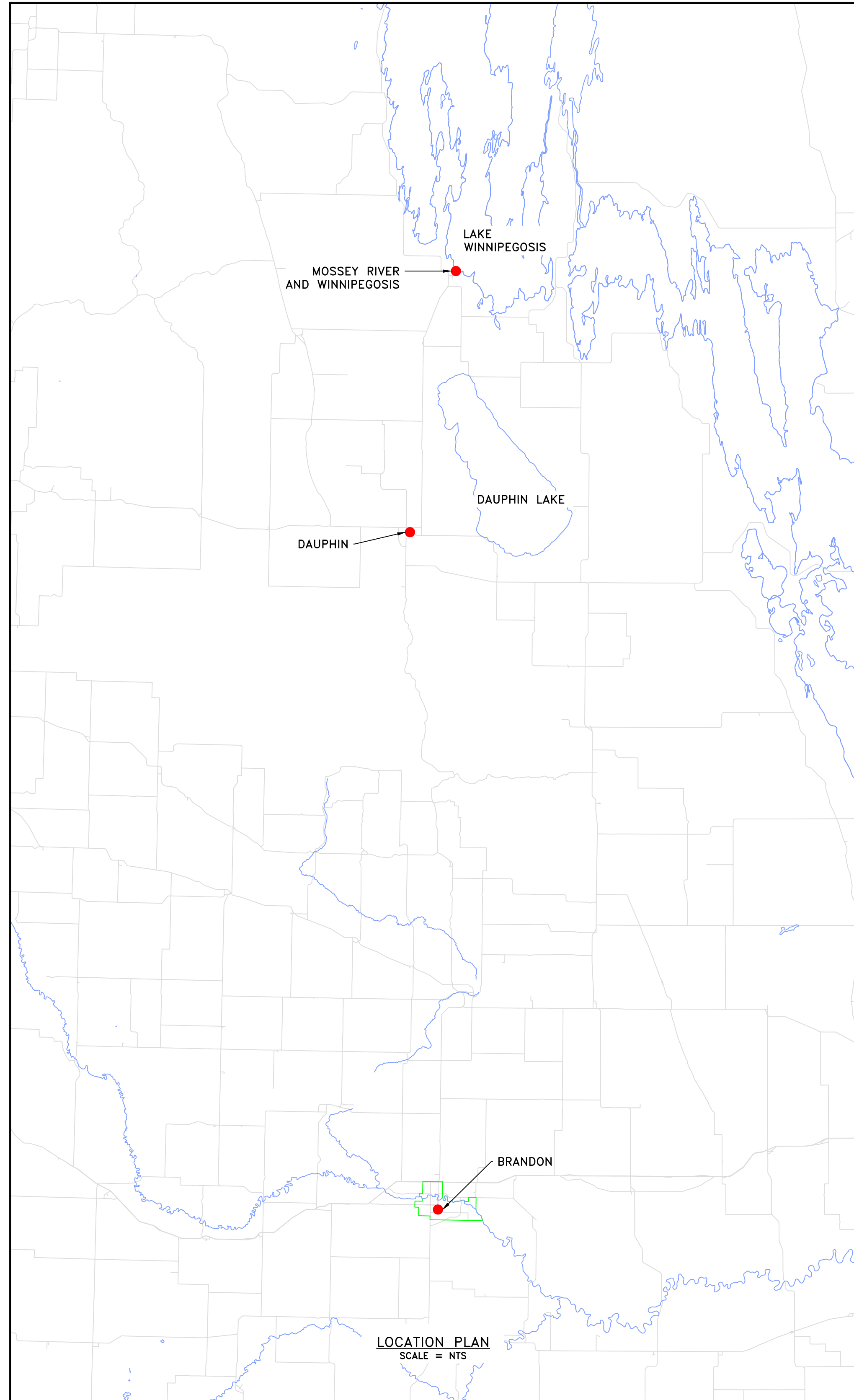
DESCRIPTION:
SITE PLAN & DEMOLITION DETAILS

DRAWN: SCH	APPROVED: SCH
---------------	------------------

DATE: JULY 2021	DATE: JULY 2021
--------------------	--------------------

LOCATION:
**MOSSEY RIVER
MANITOBA**

DRAWING NO.: M-1	LOCATOR CODE: 5562
---------------------	-----------------------



EXISTING LAUNCH RAMP - SECTION A-A
SCALE = 1:75

SMALL CRAFT HARBOURS
ONTARIO AND PRAIRIE REGION



NOTES:

1. ALL DIMENSIONS IN MILLIMETRES UNLESS OTHERWISE STATED.
2. DRAWINGS ARE NOT TO BE SCALED.
3. HARBOUR IS LOCATED AT APPROXIMATELY 51.6500° N 99.9208° W
4. ALL ELEVATIONS AND SOUNDINGS ARE IN METRES UNLESS OTHERWISE STATED.
5. ELEVATIONS ARE GIVEN USING THE CANADIAN GEODETIC VERTICAL DATUM OF 1928 (CGVD28).
6. COORDINATES FOR THE HORIZONTAL CONTROL ARE GIVEN ON THE U.T.M. MAPPING PLANE, ZONE 14, USING THE NORTH AMERICAN DATUM OF 1983 (NAD83).
7. 20 MINUS GRANULAR TO BE COMPACTED ABOVE WATER LEVEL.
8. EXCAVATE TO SUIT NEW LAUNCH RAMP INSTALLATION.
9. FIELD TRANSITION SIDES OF NEW LAUNCH RAMP.

HORIZONTAL CONTROL POINTS			
POINT #	NORTHING (M)	EASTING (M)	ELEV. (M)
CP1	5722518.418	436287.739	254.239
CP2	5722516.136	436290.394	254.204
CP3	5722513.361	436288.008	254.204
CP4	5722515.642	436285.354	254.239

REVISIONS:	DATE:
0 ISSUED FOR TENDER	JULY 2021

SCALE: AS SHOWN	CLASS:
-----------------	--------

PROJECT: LAUNCH RAMP RECONSTRUCTION

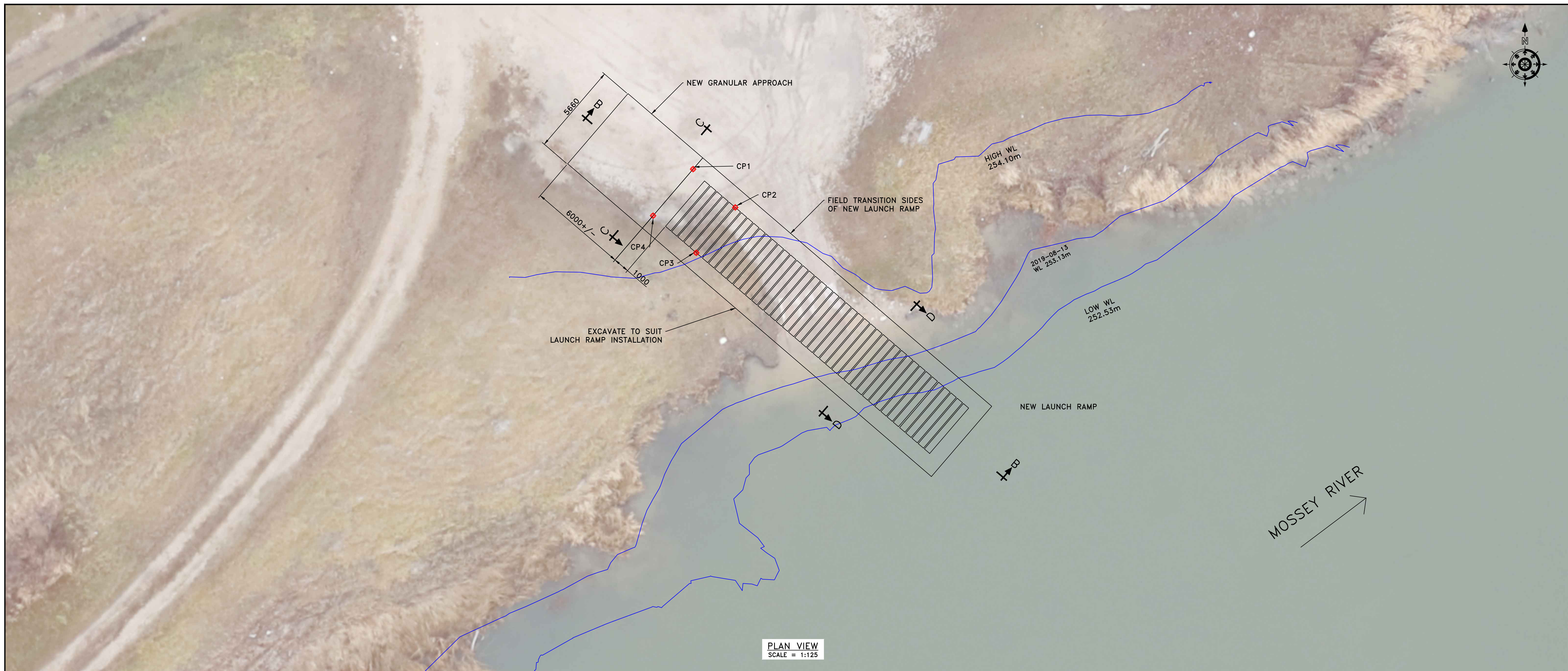
DESCRIPTION: CONSTRUCTION DETAILS

DRAWN: SCH	APPROVED: SCH
------------	---------------

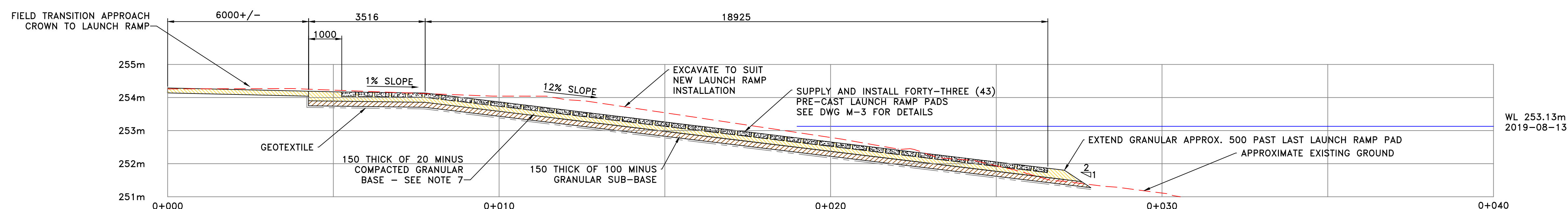
DATE: JULY 2021	DATE: JULY 2021
-----------------	-----------------

LOCATION: MOSSEY RIVER MANITOBA

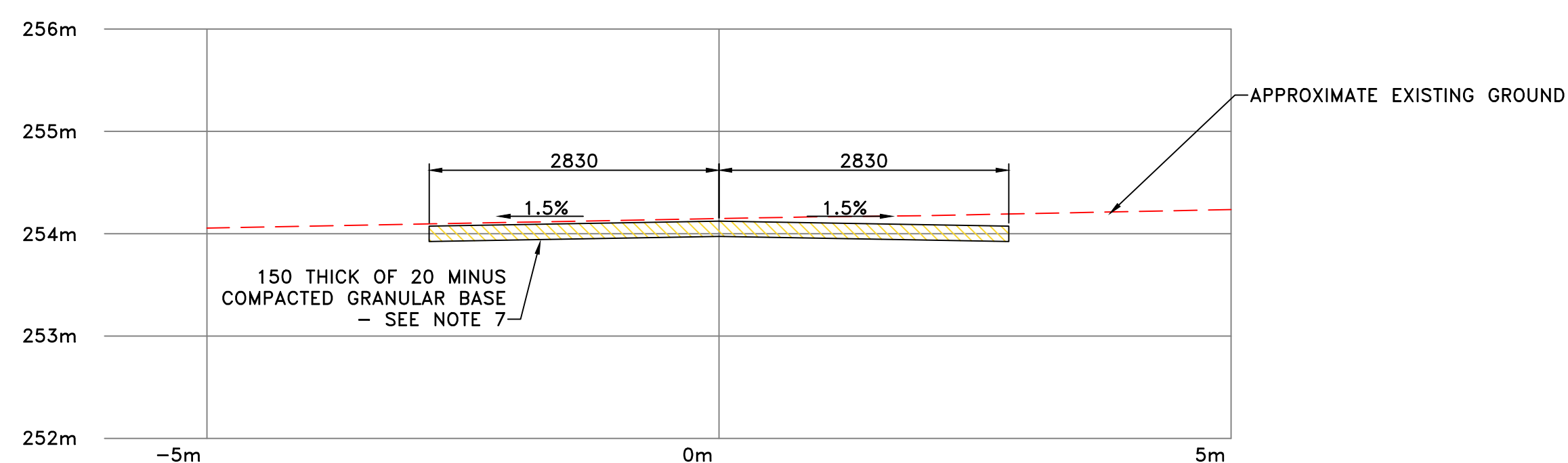
DRAWING NO.: M-2	LOCATOR CODE: 5562
------------------	--------------------



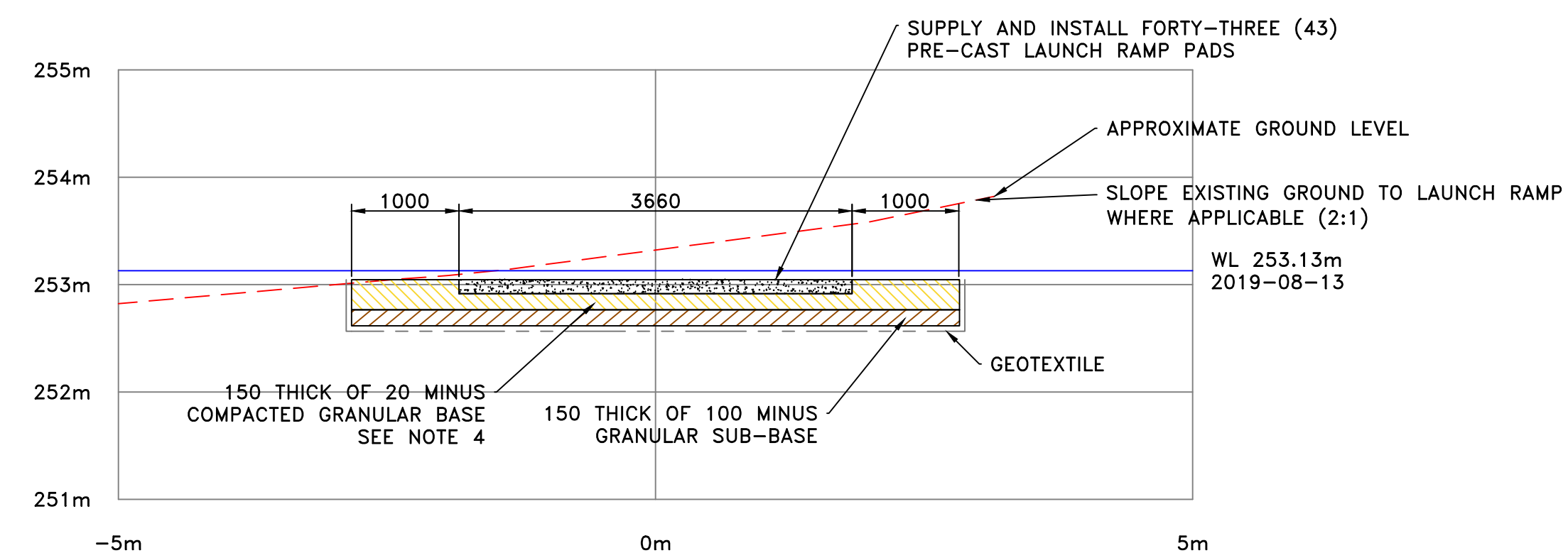
PLAN VIEW
SCALE = 1:125



NEW LAUNCH RAMP - SECTION B-B
SCALE = 1:75



NEW GRANULAR APPROACH - SECTION C-C
SCALE = 1:50

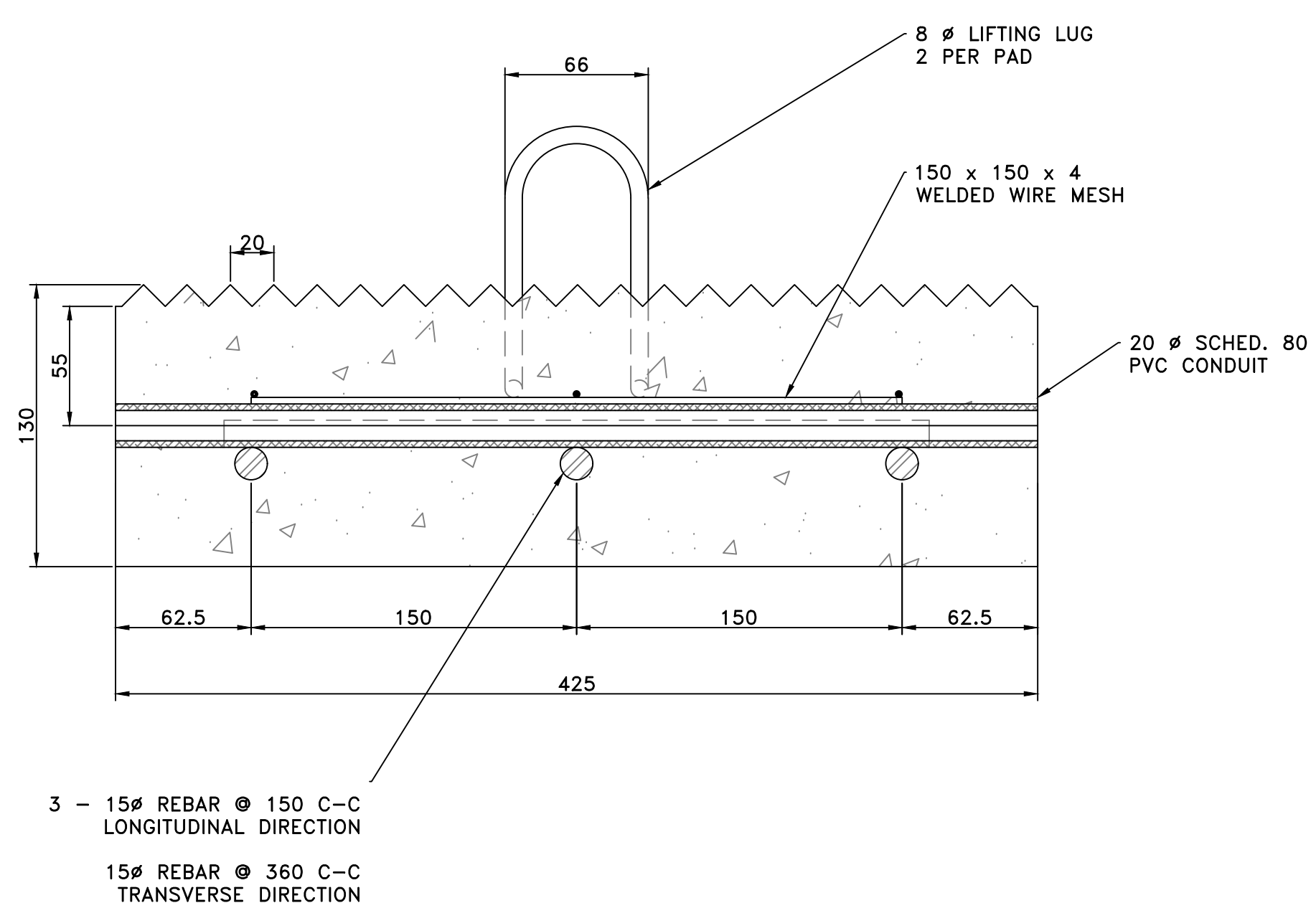


NEW LAUNCH RAMP - SECTION D-D
SCALE = 1:50

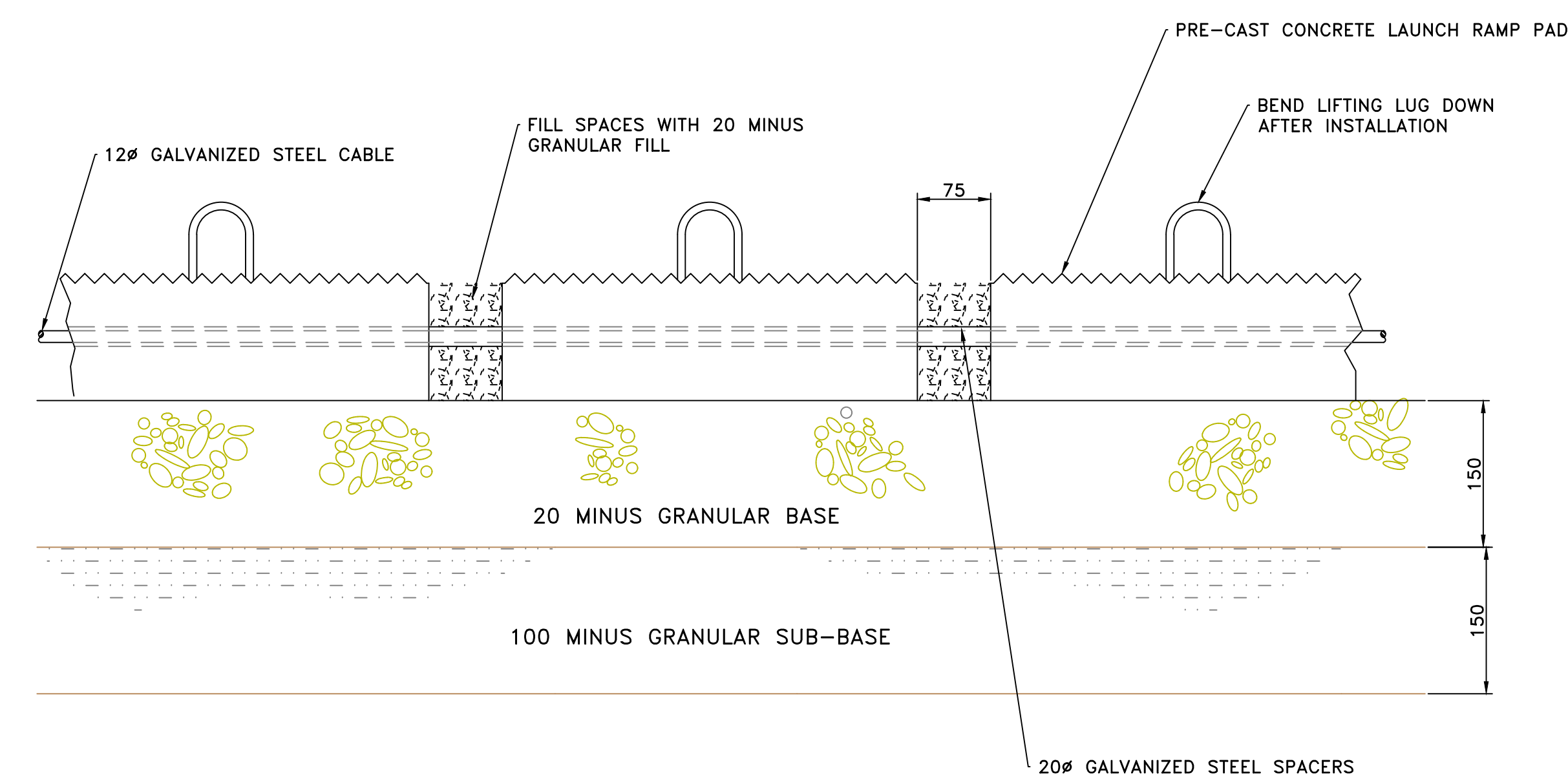
SMALL CRAFT HARBOURS
ONTARIO AND PRAIRIE REGION



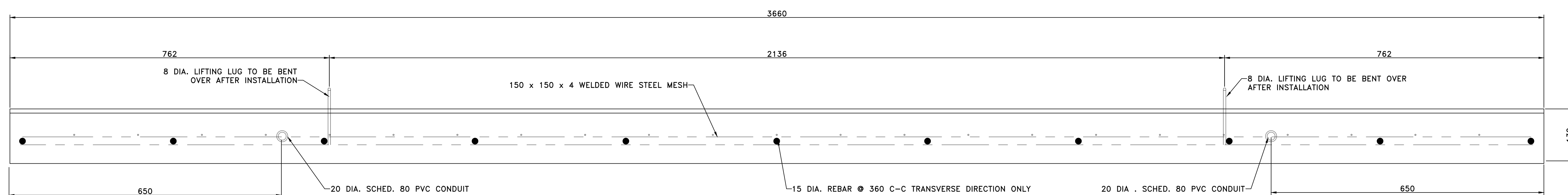
- NOTES:
- ALL DIMENSIONS IN MILLIMETRES UNLESS OTHERWISE STATED.
 - STEEL CABLE TO BE CONTINUOUS - FASTEN CABLE ENDS TOGETHER AT UPPER END WITH 3-GALV. CABLE CLAMPS. BURY EXPOSED CABLE WITH GRANULAR.
 - LAUNCH RAMP PADS TO BE SPACED 75mm APART WITH GALVANIZED PIPE SPACERS.



PRECAST CONCRETE PAD DETAIL
SCALE = 1:2.5



ASSEMBLY DETAIL
SCALE = 1:5



PRECAST CONCRETE PAD SECTION
SCALE = 1:5

REVISIONS:	DATE:
0 ISSUED FOR TENDER	JULY 2021

SCALE: AS SHOWN	CLASS:
--------------------	--------

PROJECT:
LAUNCH RAMP RECONSTRUCTION

DESCRIPTION:
ASSEMBLY DETAILS

DRAWN: SCH	APPROVED: SCH
---------------	------------------

DATE: JULY 2021	DATE: JULY 2021
--------------------	--------------------

LOCATION:
**MOSSEY RIVER
MANITOBA**

DRAWING NO.: M-3	LOCATOR CODE: 5562
---------------------	-----------------------