


 GOVERNMENT OF CANADA
 FISHERIES AND OCEANS


 GOUVERNEMENT DU CANADA
 PÊCHES ET OcéANS

SMALL CRAFT HARBOURS
ONTARIO AND PRAIRIE REGION



NOTES:

1. ALL DIMENSIONS IN MILLIMETRES UNLESS OTHERWISE STATED.
2. ALL ELEVATIONS AND SOUNDINGS ARE IN METRES UNLESS OTHERWISE STATED.
3. ELEVATIONS ARE GIVEN USING THE CANADIAN GEODETIC VERTICAL DATUM OF 1928 (CGVD28).
4. EXISTING LAUNCH RAMP TO BE REMOVED; APPROXIMATELY 48 PRE-CAST PADS 3.66m x 0.425m x 0.130.
5. ACCESS TO FISH PLANT, WHARF, AND FLOATING DOCKS MUST NOT BE BLOCKED DURING CONSTRUCTION.

REVISIONS:	DATE:
ISSUED FOR TENDER	JULY 2021

SCALE:	CLASS:
AS NOTED	

PROJECT:

LAUNCH RAMP RECONSTRUCTION

DESCRIPTION:

SITE PLAN & DEMOLITION DETAILS

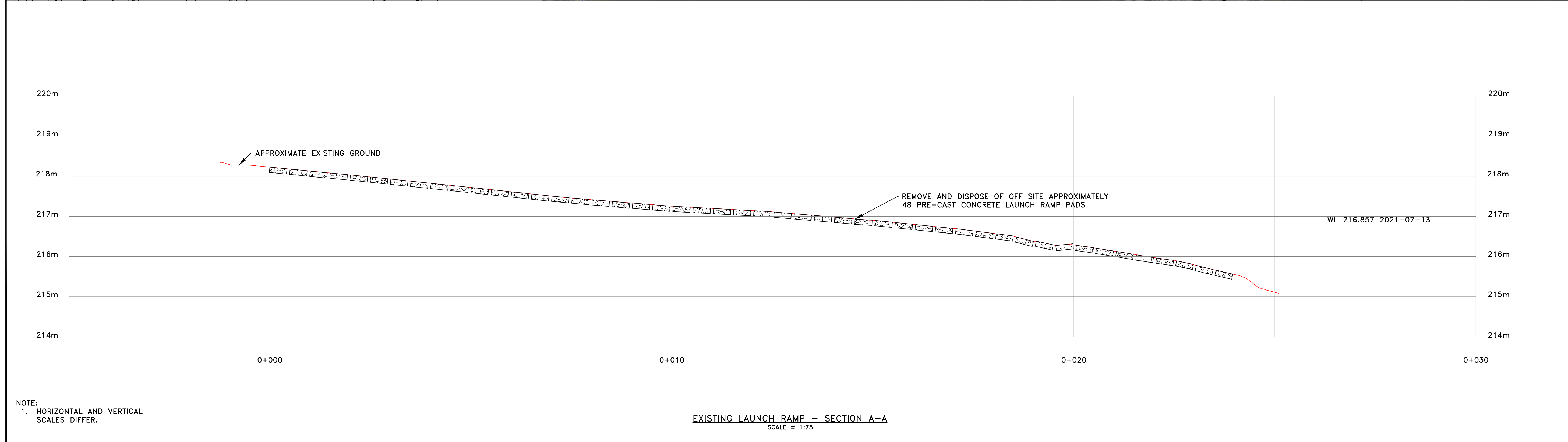
DRAWN:	APPROVED:
SCH	SCH

DATE:	DATE:
JULY 2021	JULY 2021

LOCATION:

WHISKEY JACK PORTAGE
MANITOBA

DRAWING NO.:	LOCATOR CODE:
G-1	5551



SMALL CRAFT HARBOURS
ONTARIO AND PRAIRIE REGION



NOTES:

1. ALL DIMENSIONS IN MILLIMETRES UNLESS OTHERWISE STATED.
2. DRAWINGS ARE NOT TO BE SCALED.
3. HARBOUR IS LOCATED AT APPROXIMATELY 54.43633° N -98.00553° W
4. ALL ELEVATIONS AND SOUNDINGS ARE IN METRES UNLESS OTHERWISE STATED.
5. ELEVATIONS ARE GIVEN USING THE CANADIAN GEODETIC VERTICAL DATUM OF 1928 (CGVD28).
6. COORDINATES FOR THE HORIZONTAL CONTROL ARE GIVEN ON THE U.T.M. MAPPING PLANE, ZONE 14, USING THE NORTH AMERICAN DATUM OF 1983 (NAD83).
7. ALL GRANULAR TO BE COMPACTED ABOVE WATER LEVEL.
8. EXCAVATE TO SUIT NEW LAUNCH RAMP INSTALLATION.
9. FILL ANY GAPS BETWEEN LAUNCH RAMP PADS WITH 20 MINUS GRANULAR.

HORIZONTAL CONTROL POINTS			
POINT #	NORTHING (M)	EASTING (M)	ELEV. (M)
CP1	6032522.9104	564517.6032	218.226
CP2	6032524.3296	564520.9768	218.226
CP3	6032518.3016	564519.5419	217.726
CP4	6032519.7207	564522.9155	217.726

REVISIONS:	DATE:
0 ISSUED FOR TENDER	JULY 2021

SCALE: AS NOTED	CLASS:
-----------------	--------

PROJECT: LAUNCH RAMP RECONSTRUCTION

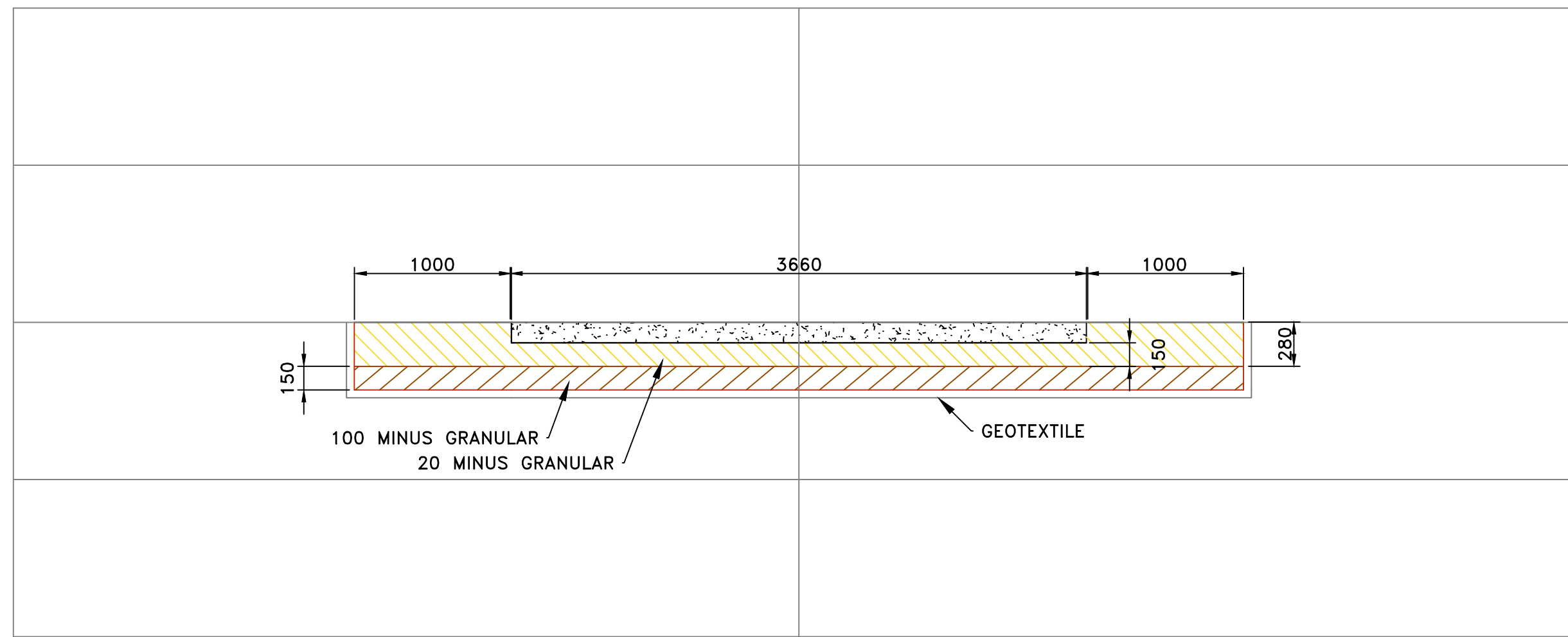
DESCRIPTION: SITE PLAN & CONSTRUCTION DETAILS

DRAWN: SCH APPROVED: SCH

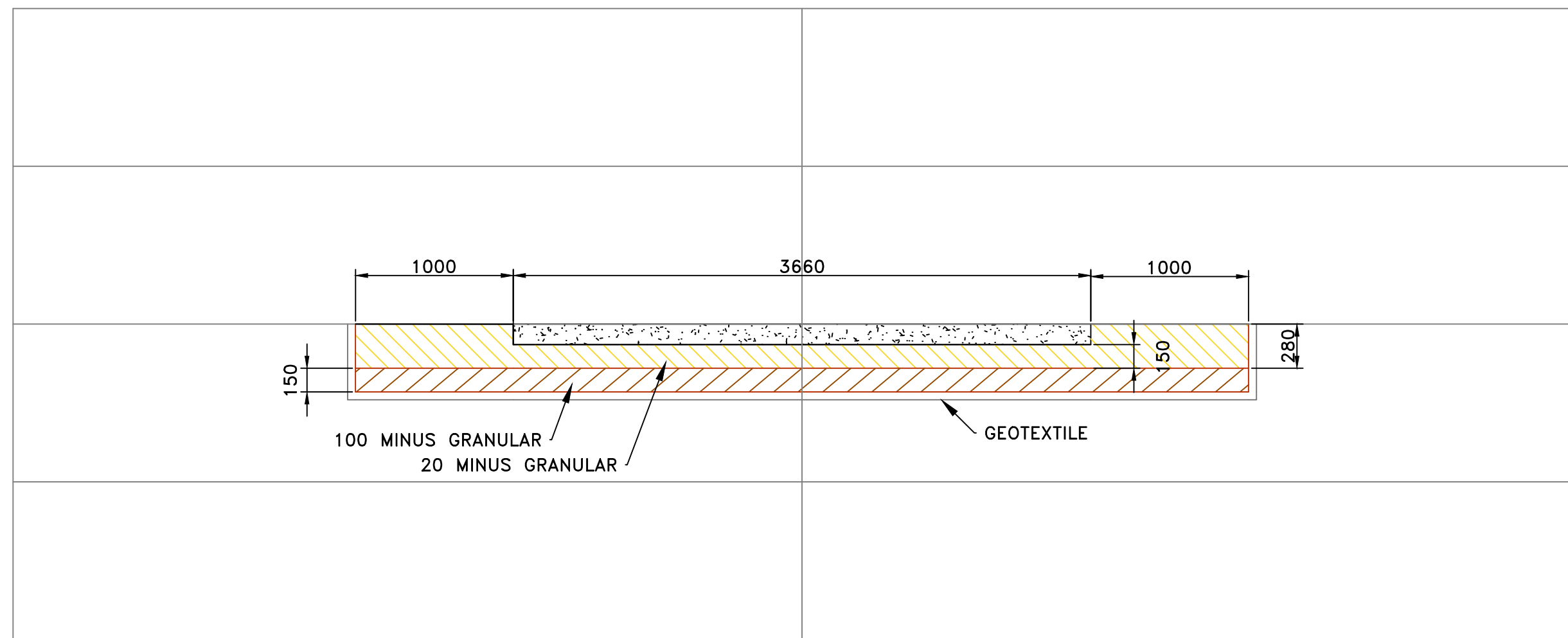
DATE: JULY 2021 DATE: JULY 2021

LOCATION: WHISKEY JACK PORTAGE MANITOBA

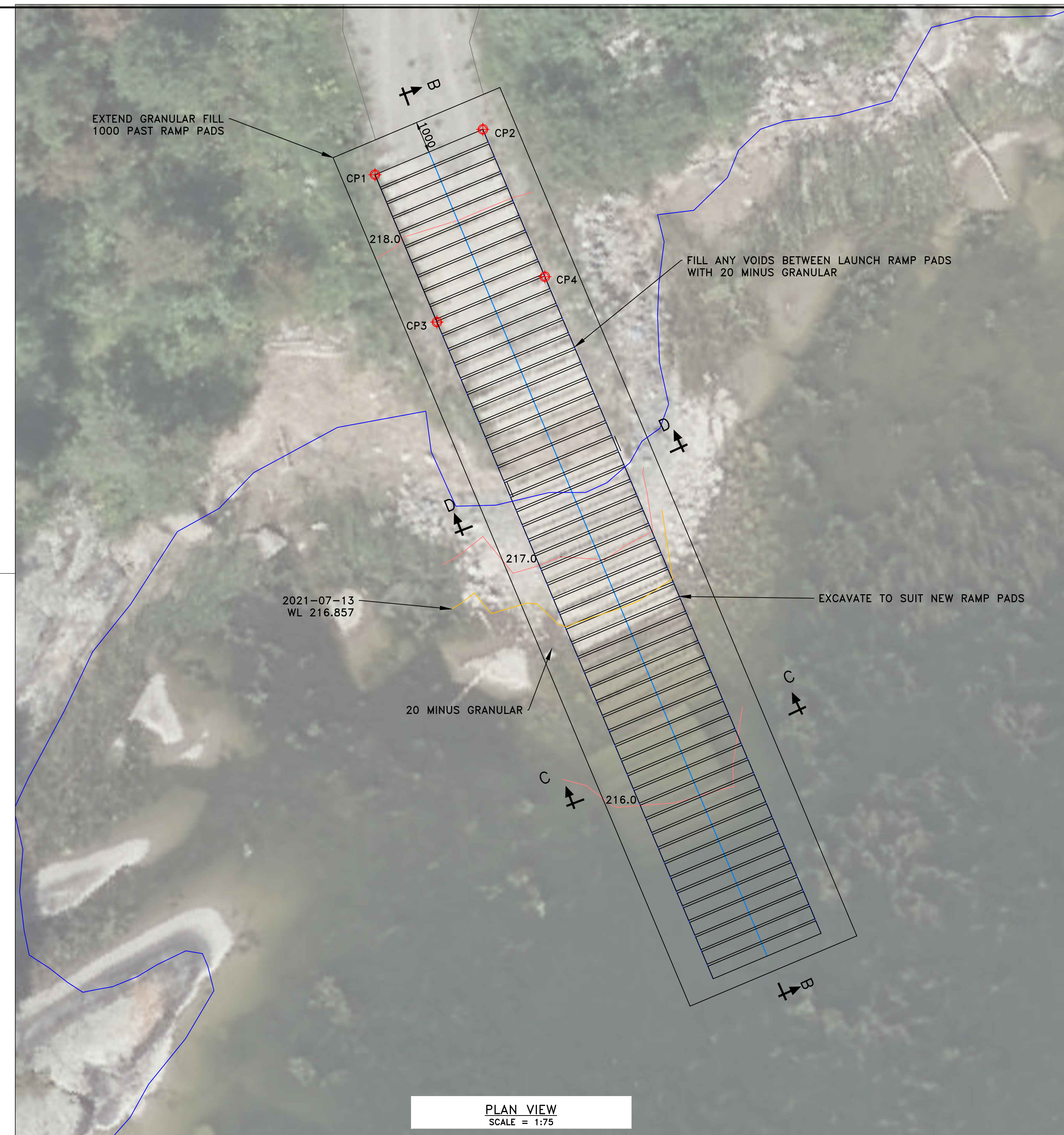
DRAWING NO.: G-2 LOCATOR CODE: 5551



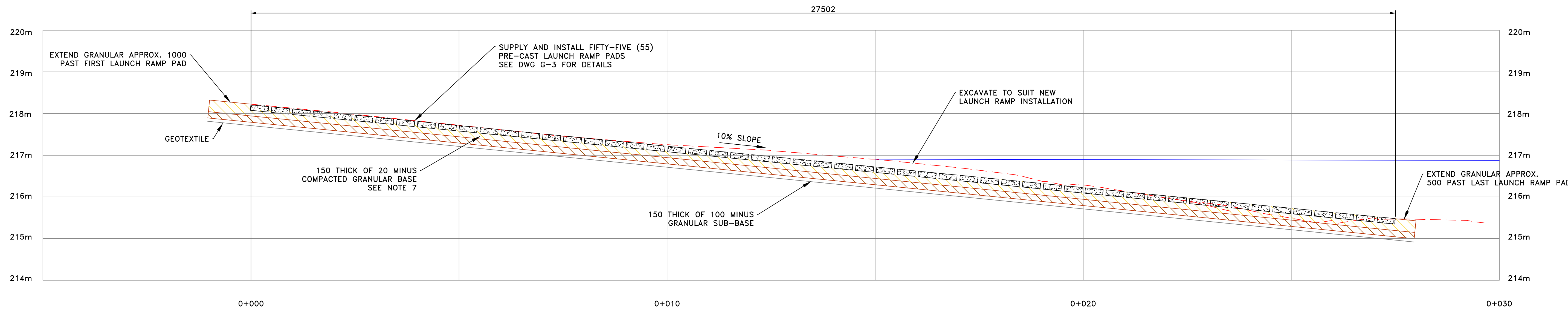
LAUNCH RAMP - SECTION C-C
SCALE = 1:75



LAUNCH RAMP - SECTION D-D
SCALE = 1:75



PLAN VIEW
SCALE = 1:75



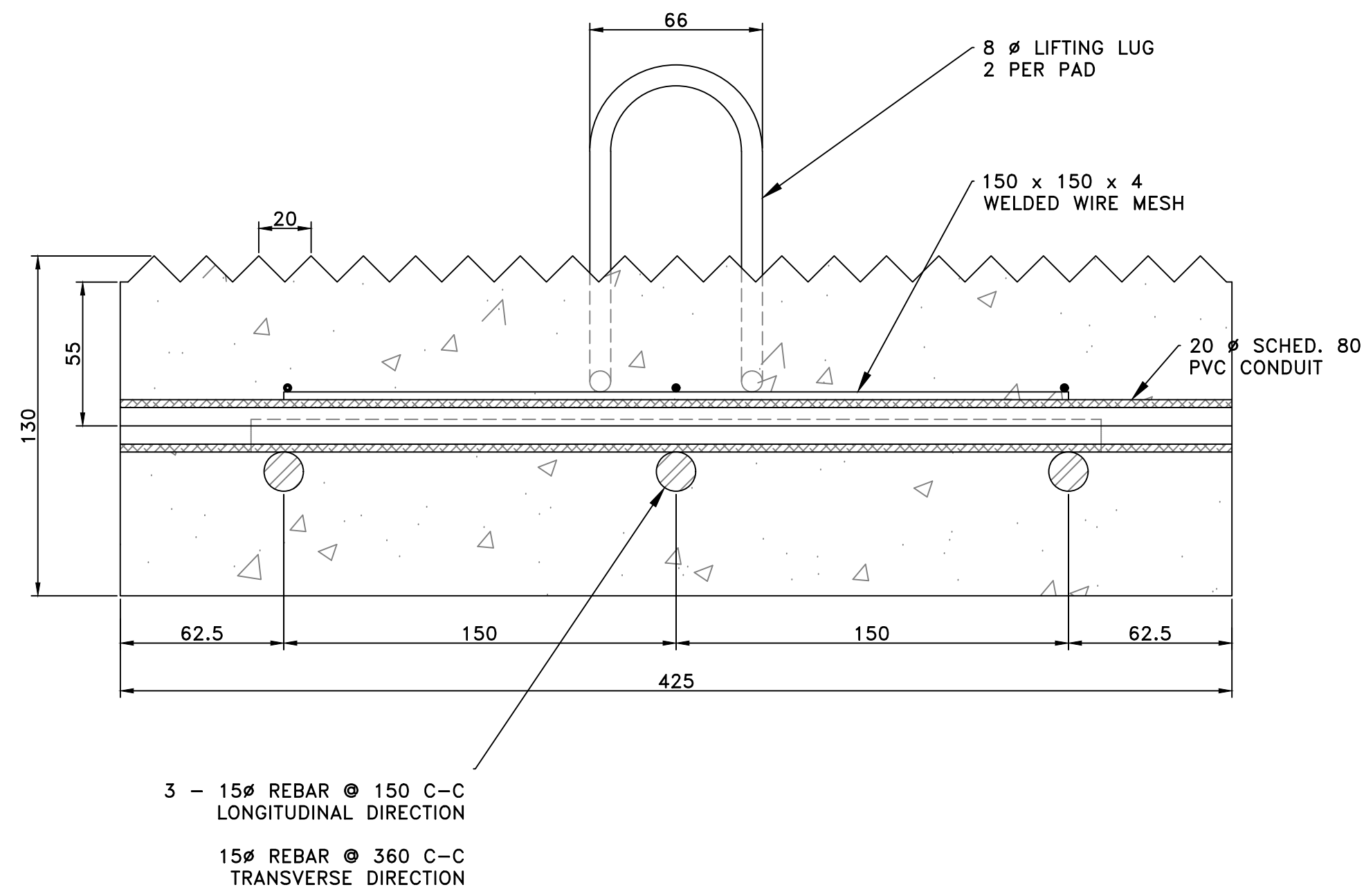
LAUNCH RAMP - SECTION B-B
SCALE = 1:75

SMALL CRAFT HARBOURS
ONTARIO AND PRAIRIE REGION

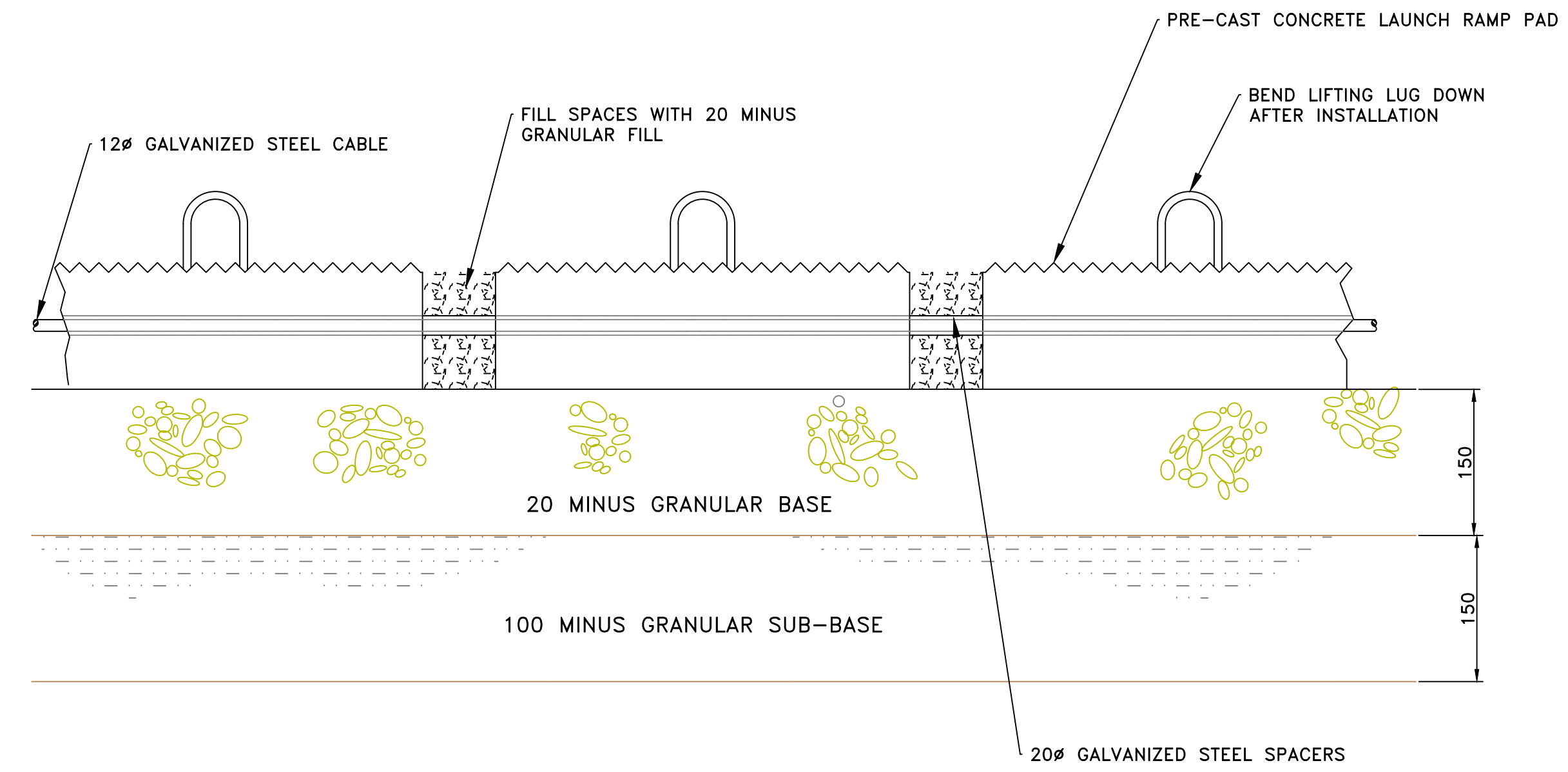


NOTES:

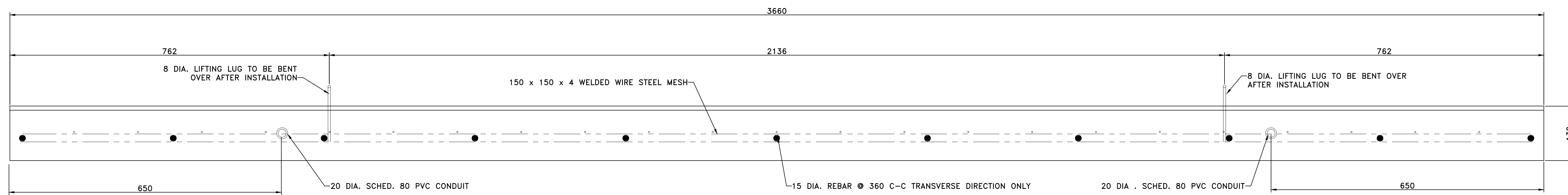
- ALL DIMENSIONS IN MILLIMETRES UNLESS OTHERWISE STATED.
- STEEL CABLE TO BE CONTINUOUS - FASTEN CABLE ENDS TOGETHER AT UPPER END WITH 3-GALV. CABLE CLAMPS. BURY EXPOSED CABLE WITH GRANULAR.
- LAUNCH RAMP PADS TO BE SPACED 75mm APART WITH GALVANIZED PIPE SPACERS.



PRECAST CONCRETE PAD DETAIL
SCALE = 1:2



ASSEMBLY DETAIL
SCALE = 1:5



PRECAST CONCRETE PAD SECTION
SCALE = 1:5

REVISIONS:	DATE:
0 ISSUED FOR TENDER	JULY 2021

SCALE: AS SHOWN	CLASS:
--------------------	--------

PROJECT:
LAUNCH RAMP RECONSTRUCTION

DESCRIPTION:
ASSEMBLY DETAILS

DRAWN: SCH	APPROVED: SCH
---------------	------------------

DATE: JULY 2021	DATE: JULY 2021
--------------------	--------------------

LOCATION:
**WHISKEY JACK PORTAGE
MANITOBA**

DRAWING NO.: G-3	LOCATOR CODE: 5551
---------------------	-----------------------