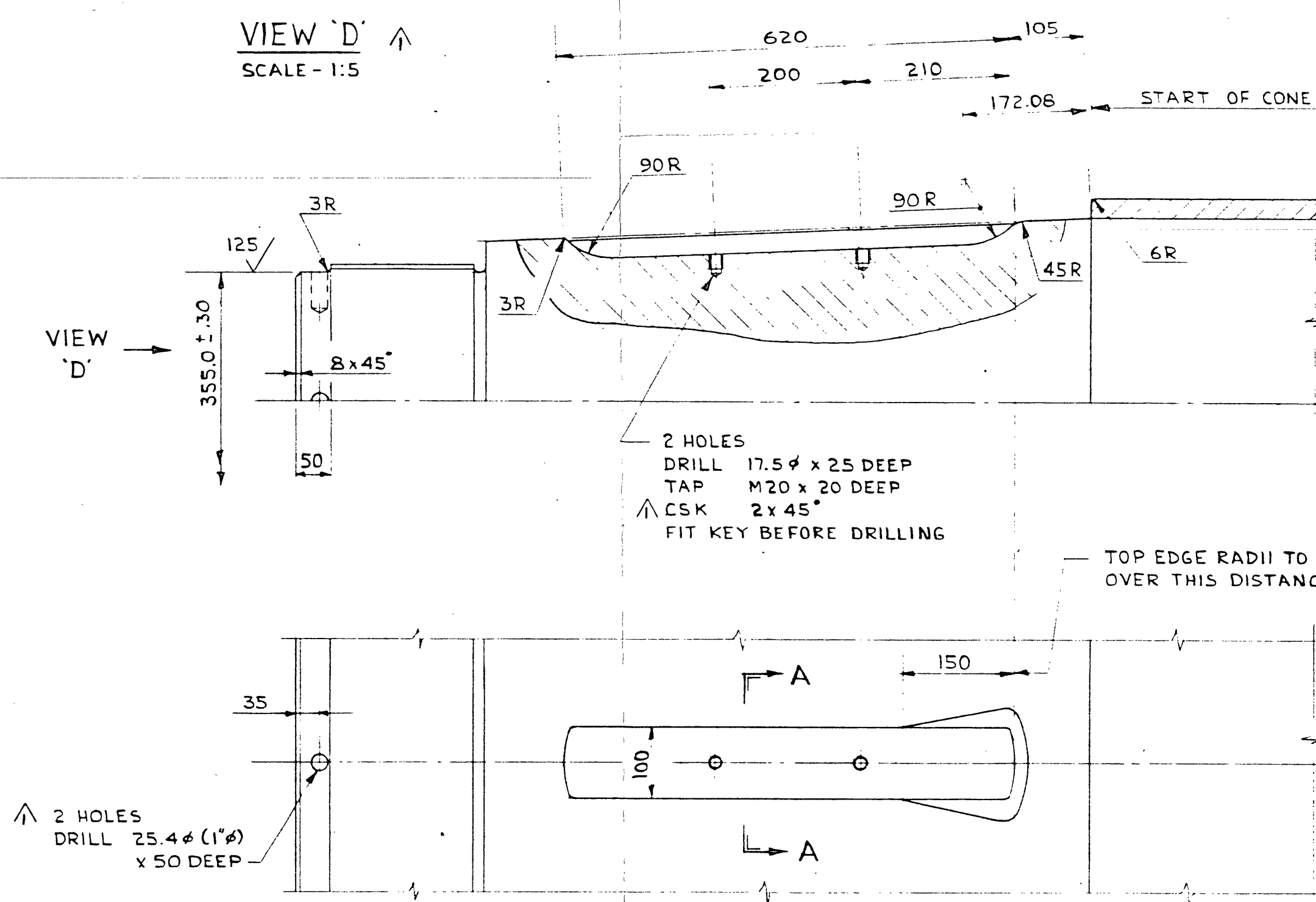
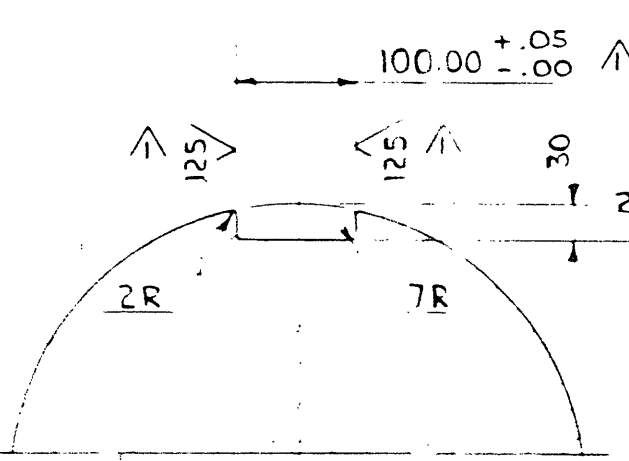


DETAIL OF TAILSHAFT AND LINERS

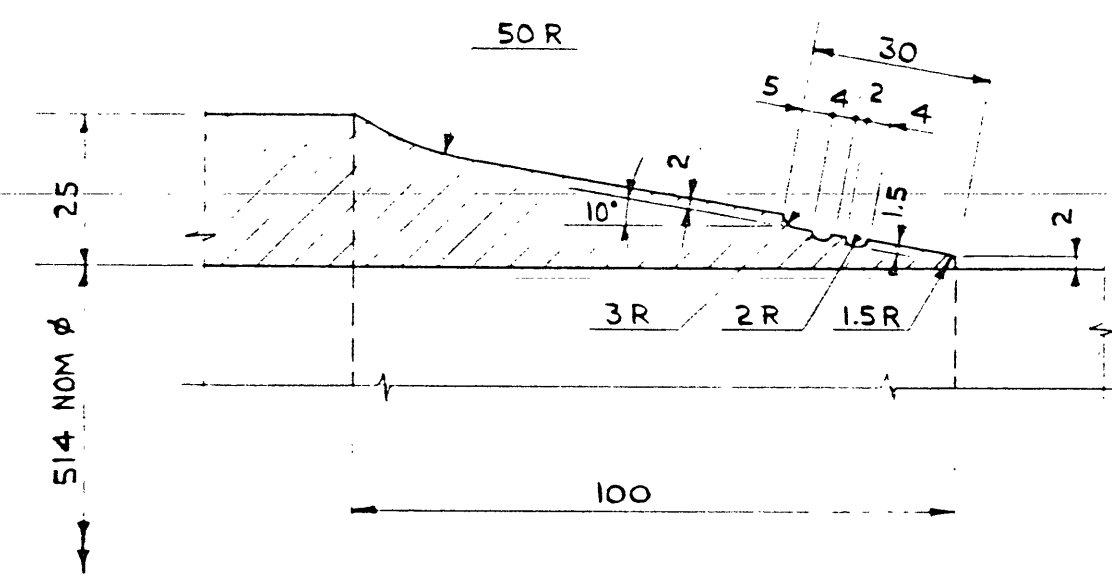


DETAIL 1  
SCALE - 1:5

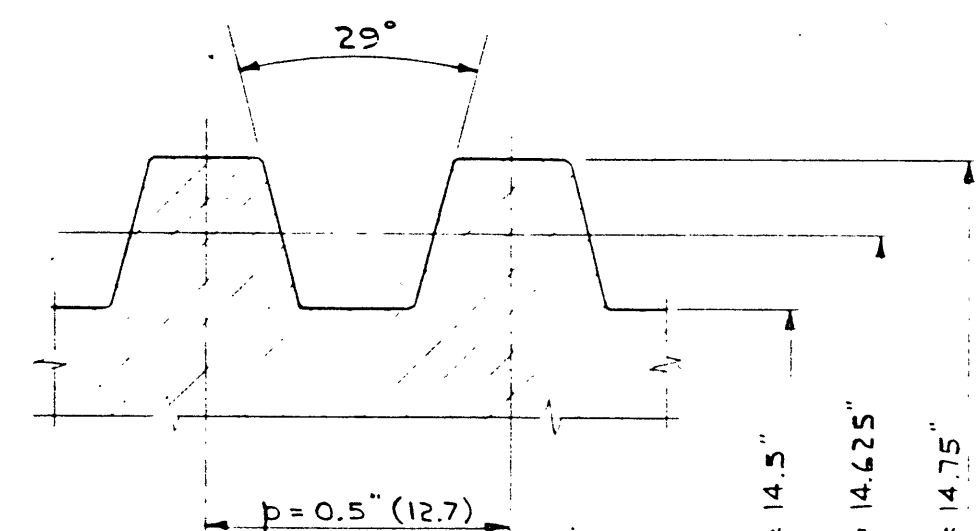


SECTION A-A  
SCALE - 1:5

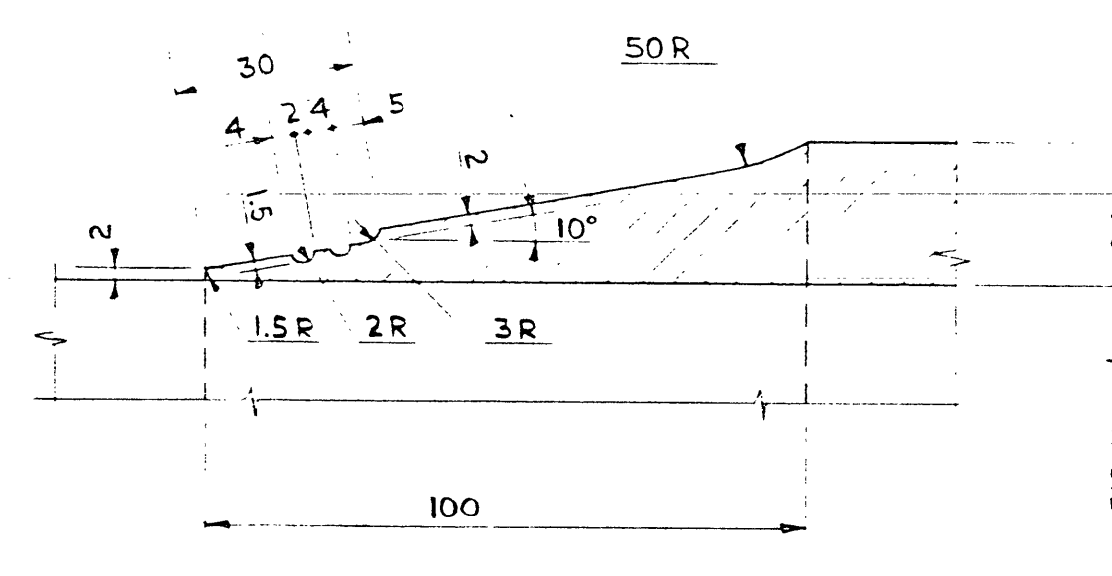
DETAIL 3  
SCALE - 1:1



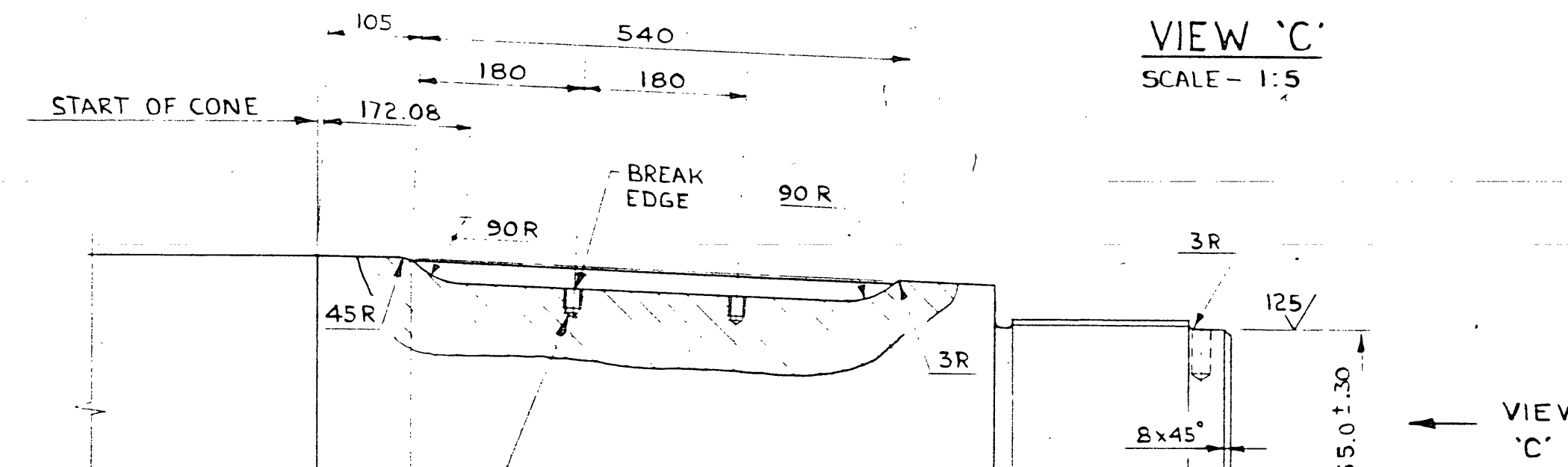
DETAIL 5  
SCALE - 1:1



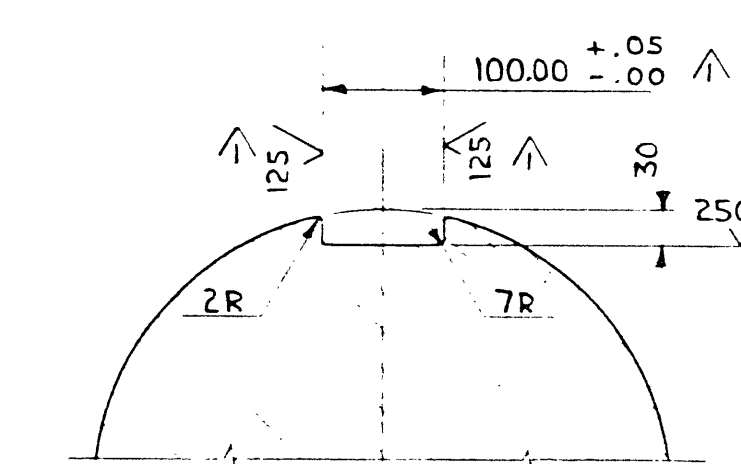
ACME THREAD PROFILE  
SCALE - 4:1



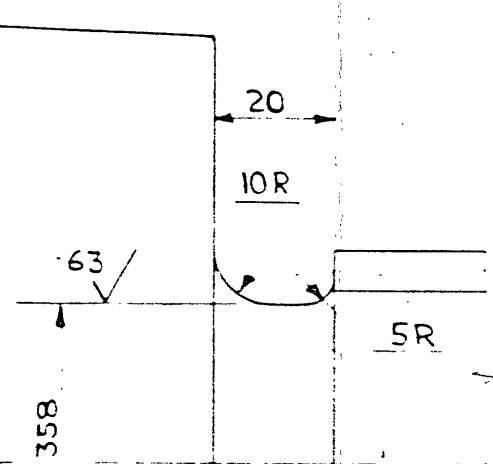
DETAIL 6  
SCALE - 1:1



DETAIL 2  
SCALE - 1:5



SECTION B-B  
SCALE - 1:5



DETAIL 4  
SCALE - 1:1

WEIGHT -  
① 22,584  
② 897  
③ 1,163  
TOTAL 24,644 kg

REFERENCE DRAWINGS		
NO	DWG NO	TITLE
1	3591-1	ARRANGEMENT OF SHAFTING

NOTES		
1. CLASSIFICATION	(a) LLOYDS REG OF SHIP - ICE CLASS 1A SUPER (b) CANADIAN ARCTIC SHIPPING POLLUTION PREVENTION REGS - ARCTIC CLASS 2	
2. MATERIAL	(a) FORGED STEEL AISI C-1026 TENSILE STRENGTH: 45/55 kg/mm <sup>2</sup> YIELD POINT: 27 kg/mm <sup>2</sup> ELONGATION: 21% (b) BRONZE ASTM B-584 ALLOY 90S CONTINUOUS CAST AS PER LLOYDS RULES - PART 2, CHAP. 9 3. BEFORE SHRINKING, BRONZE LINERS TO BE HYDROSTATICALLY TESTED TO 2.068 BAR 4. SHAFT BETWEEN LINERS TO BE PROTECTED WITH 'CELLOFLEX' COATING APPLIED AS PER MANUFACTURERS RECOMMENDATIONS	

REVISIONS		
NO	DATE	DESCRIPTION
1	21 DEC 83	45R WAS 10R; CSK 2x45 WAS 1x45; CSK 3x45 WAS 2x45; SLOT REPL WITH HOLES; VIEW 'D', ACME TH. PROF. TOLS. AND MACH. MARKS, ADDED; ICE CLASS 1A SUPER WAS 1R
2	28 JAN 84	6RFB WEIGHT ADDED; ARCTIC CLASS 2 WAS ICE CLASS 2

APPROVALS		
BY	DATE	DESCRIPTION
LLOYDS	25 DEC 83	11 JAN 84
C.C.G.	25 JAN 84	

Ampower Canada (1982) Limited St Catharines, Ontario	
TYPE 1100 NAVALS TENDER / LIGHT ICEBREAKER	
TAILSHAFT	
DRAWN J.W. HOWE	DATE 24 NOV 83
CHECKED [Signature]	SCALE 1:10
APPROVED [Signature]	DATE 04/12/83
DRAWING NUMBER 3591-10	REV 2

IMPUTATION DES COUTS/COST CHARGES		
GR	IT	DESCRIPTION
464	2	TAILSHAFT & SPARE

REFERENCES		
NO	TITLE	DESIGN DWG

POUR MATERIEL VOIR FOR MATERIAL REFER TO NOTES

REVISIONS		
NO	DATE	DESCRIPTION
1	21 DEC 83	45R WAS 10R; CSK 2x45 WAS 1x45; CSK 3x45 WAS 2x45; SLOT REPL WITH HOLES; VIEW 'D', ACME TH. PROF. TOLS. AND MACH. MARKS, ADDED; ICE CLASS 1A SUPER WAS 1R
2	28 JAN 84	6RFB WEIGHT ADDED; ARCTIC CLASS 2 WAS ICE CLASS 2

APPROBATIONS/APPROVALS		
CLASS	SUB	REV
1	2	2

MARINE INDUSTRIE LIMITEE SOREL P.Q. CANADA	
TYPE 1100 NAVALS TENDER / LIGHT ICEBREAKER	
SHAFTING - TAILSHAFT - (AS SUPPLIED BY AMPOWER)	
PAID BY [Signature]	CONT NO 450 ONLY
DESIGN DWG 464-11	REV 2