

- GENERAL NOTES:**
- CONTRACTOR TO VERIFY LOCATION OF ALL BURIED SERVICES PRIOR TO START OF CONSTRUCTION.
 - TOPOGRAPHIC INFORMATION PROVIDED BY RONALD H. SMITH LTD. (JULY 2012). REFER TO CONTROL POINT (09R193033) LOCATION SHOWN ON KEY PLAN, NORTHING=4899107.479, EASTING=375921.245, ELEVATION = 84.229m.
 - GEOTECHNICAL INFORMATION PROVIDED BY DBA ENGINEERING LTD. (NOVEMBER 2012).
 - EXISTING BUILDINGS AND TREES TO BE PROTECTED DURING CONSTRUCTION UNLESS INDICATED OTHERWISE.
 - REINSTATE DISTURBED AREAS TO ORIGINAL CONDITION OR BETTER AND GRADE SURROUNDING AREAS AT 4%:1V FOR TIE-IN. COORDINATE WITH DEPARTMENTAL REPRESENTATIVE PRIOR TO COMMENCING RESTORATION.
 - HEAVY DUTY SALT FENCE AS PER OPSD 219.130 TO BE INSTALLED DOWN STREAM OF CONSTRUCTION.
 - (S) - SWALE GRADE; (TOC) - TOP OF CURB GRADE; (BOC) - BOTTOM OF CURB GRADE
 - TEST EXCAVATIONS ARE TO BE COMPLETED AT ALL UTILITY TIE-INS AND UTILITY CROSSINGS. EXCAVATION IS TO BE COMPLETED AND ANY DISCREPANCIES OR CONFLICTS WITH THE INFORMATION PROVIDED IS TO BE SUBMITTED TO THE DEPARTMENTAL REPRESENTATIVE SEVEN (7) DAYS IN ADVANCE OF THE WORK.
 - THE CONTRACTOR IS TO COORDINATE ALL TRENCHING ACTIVITIES WITH THE DEPARTMENTAL REPRESENTATIVE. THE LENGTH OF OPEN UTILITY TRENCHES SHALL BE LIMITED TO 5.0m AS OTHERWISE DIRECTED BY THE DEPARTMENTAL REPRESENTATIVE. TRENCHING SHALL START AT THE TIE IN OR THE NEW BUILDING.
 - 1.8m HIGH RIGID FENCING TO BE PLACED AROUND THE ENTIRE PERIMETER OF ALL OPEN EXCAVATIONS.

LEGEND:

- EXISTING EDGE OF ASPHALT
- NEW CURB
- NEW LINE PAINTING
- NEW WATERMAIN
- EXISTING SANITARY SEWER
- EXISTING STORM SEWER
- NEW STORM SEWER c/w INSULATION
- NEW SANITARY SEWER
- EXISTING WATER PIPE
- EXISTING BELL UTILITY
- EXISTING CABLE UTILITY
- EXISTING GAS LINE
- EXISTING STEAM PIPE
- EXISTING HEAT RECOVERY PIPE
- EXISTING UNDERGROUND WIRE
- ABANDONED UNDERGROUND WIRE
- NEW UNDERGROUND WIRE
- NEW GAS LINE
- NEW SWALE
- NEW TOP OF SLOPE
- EXISTING STORM MAINTENANCE HOLE
- EXISTING SANITARY MAINTENANCE HOLE
- EXISTING WATER VALVE CHAMBER
- EXISTING FIRE HYDRANT
- NEW FIRE HYDRANT
- NEW WATER VALVE
- NEW POWER OR COMMUNICATION HAND HOLE
- EXISTING BELL MAINTENANCE HOLE
- EXISTING ELECTRICAL MAINTENANCE HOLE
- NEW BOLLARD
- NEW CURB
- EXISTING BUILDING
- NEW CONCRETE
- NEW RIP-RAP c/w GEOTEXTILE
- NEW GRAVEL
- DEEP EXCAVATION AREA
- FINISHED GRADE
- EXISTING GRADE
- SURFACE WATER FLOW DIRECTION

Public Works and Government Services Canada / Travaux publics et Services gouvernementaux Canada

Real Property Operations Branch
Real Property Operations Solutions
Direction générale des opérations immobilières
Solutions - Opérations immobilières

Project Delivery & Professional and Technical Services
Exécution de projets et Services experts/consils techniques

Watson MacEwen Teramura Architects
400-116 Lisgar Street
Ottawa ON K2P 0Z2
1.613.232.0330
1.613.232.6253

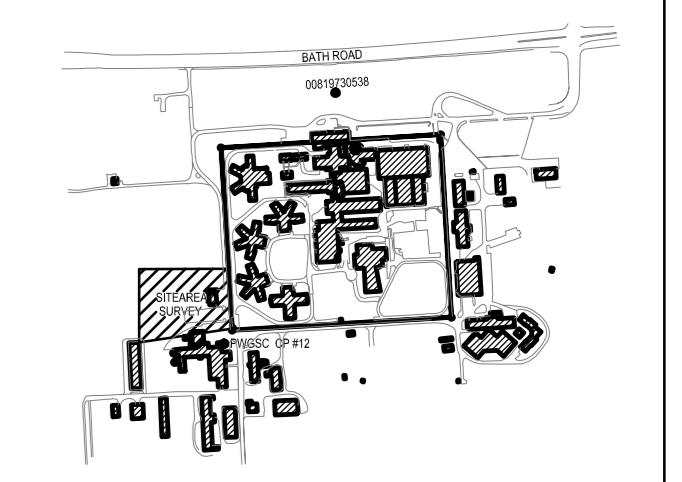
Structural Engineers
Halsall Associates
4001-210 Gladstone Avenue
Ottawa, ON K2P 0Y6
613.237.2462

Mechanical / Electrical Eng.
Bouthillette Parizeau & Associés
100 - 1960 Robertson Road
Ottawa, ON K2H 5B9
613.566.6454

Civil Engineers
WSP Group
201-1224 Gardiners Road
Kingston, Ontario K7P 0G2
613.634.7373

IT-Telecommunications
The Attain Group
208-1680 Woodward Drive
Ottawa, ON K2C 3R7
613.739.9424

key plan plan-04



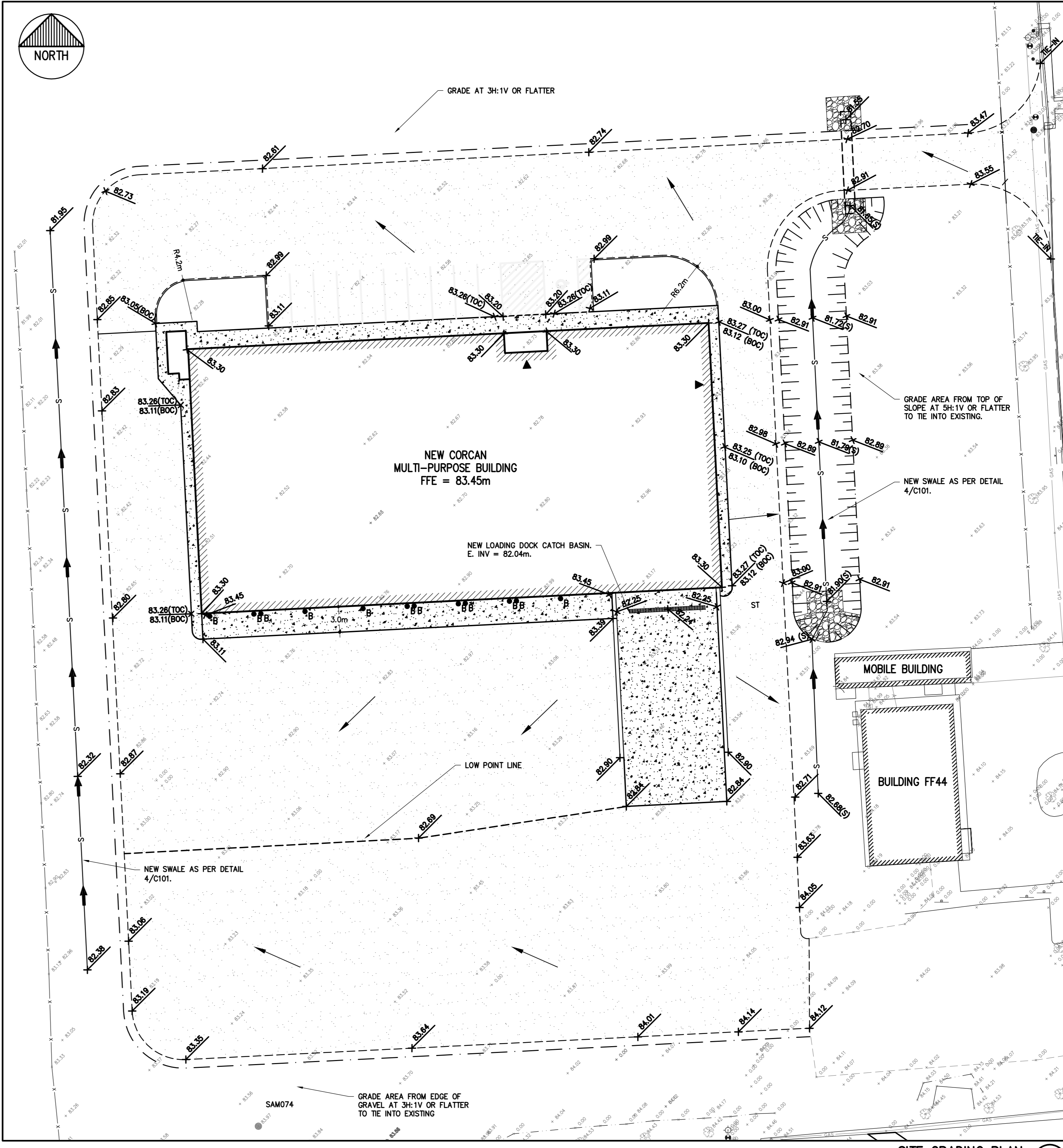
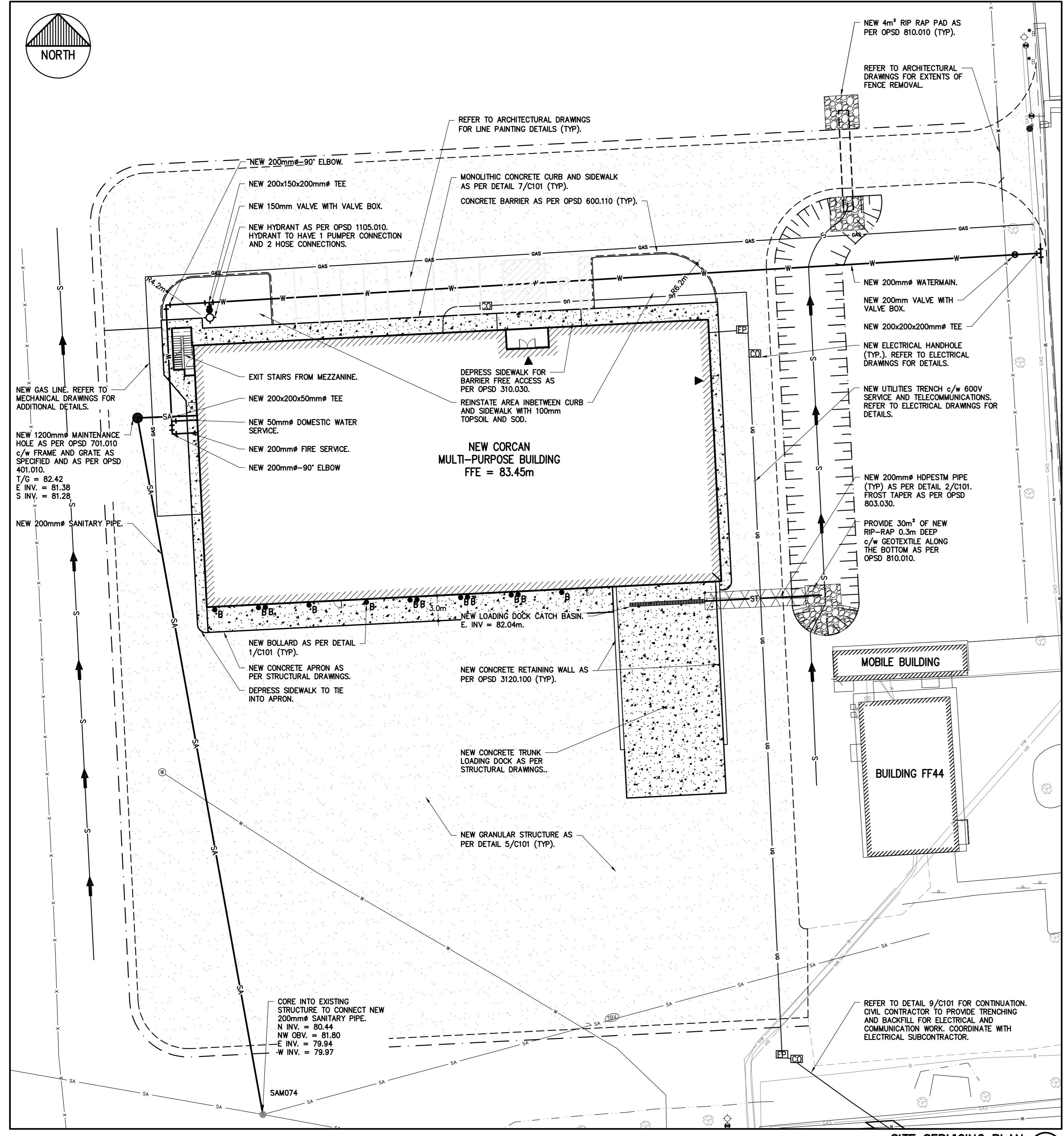
01	ISSUED FOR TENDER	15/03/16
revision	description	date
A	detail no. n° du détail	A
B	location drawing no. sur dessin n°	B
C	C drawing no. dessin n°	C

project CSC MULTI-PURPOSE BUILDING
CBI MINIMUM INSTITUTION (FRONTENAC)
KINGSTON, ONTARIO

drawing CIVIL
SITE PLAN & GRADING

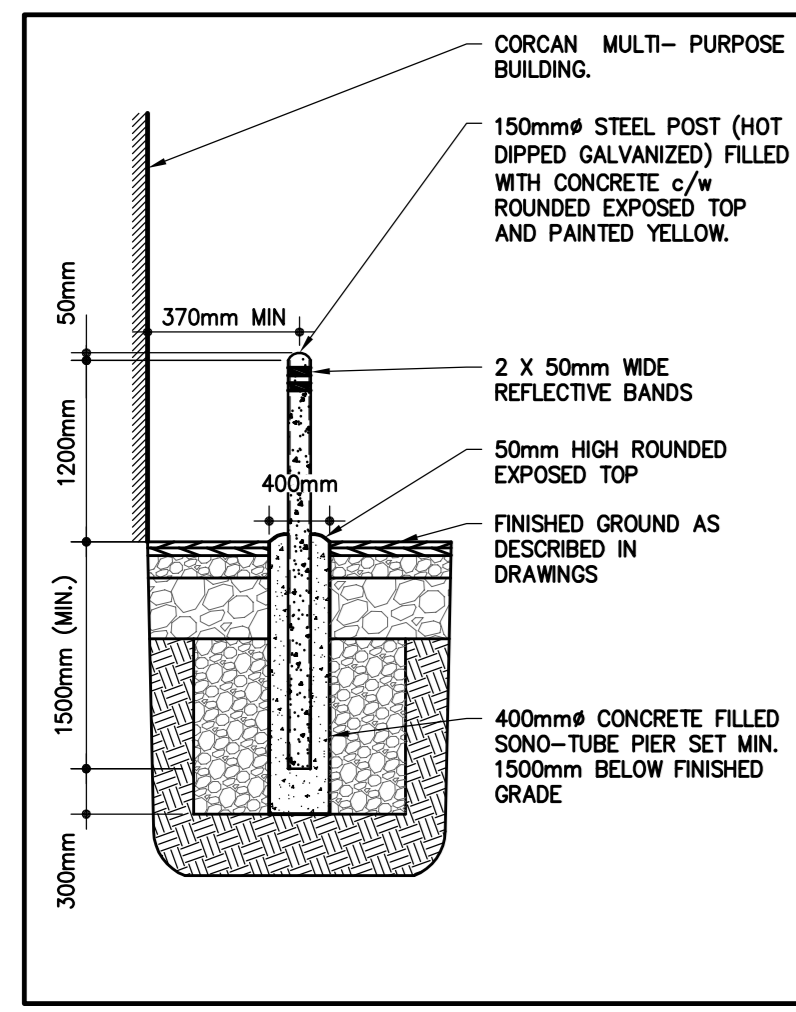
designed	NH	conçu
date	2014/08/11	(yyyy/mm/dd)
drawn	NH	dessiné
date	2014/08/11	(yyyy/mm/dd)
reviewed	KC	examiné
date	2015/03/12	(yyyy/mm/dd)
approved	MM	approuvé
date	2015/03/12	(yyyy/mm/dd)
Tender	DUNCAN PARKER	Soumission

Project Manager Administrateur de projets
project no. no. du projet
R.055776.001
drawing no. no. du dessin
C100

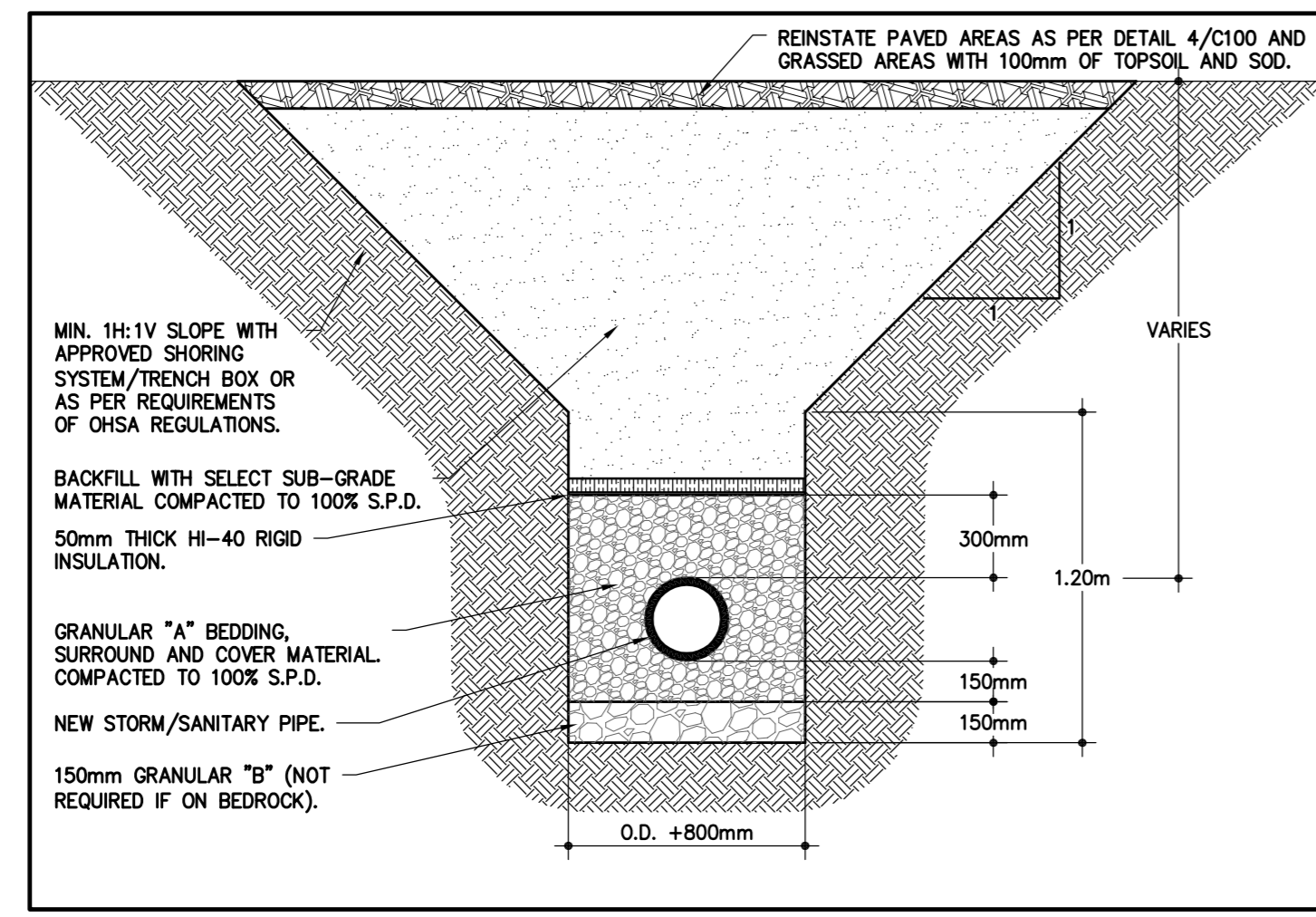


02.02.2015

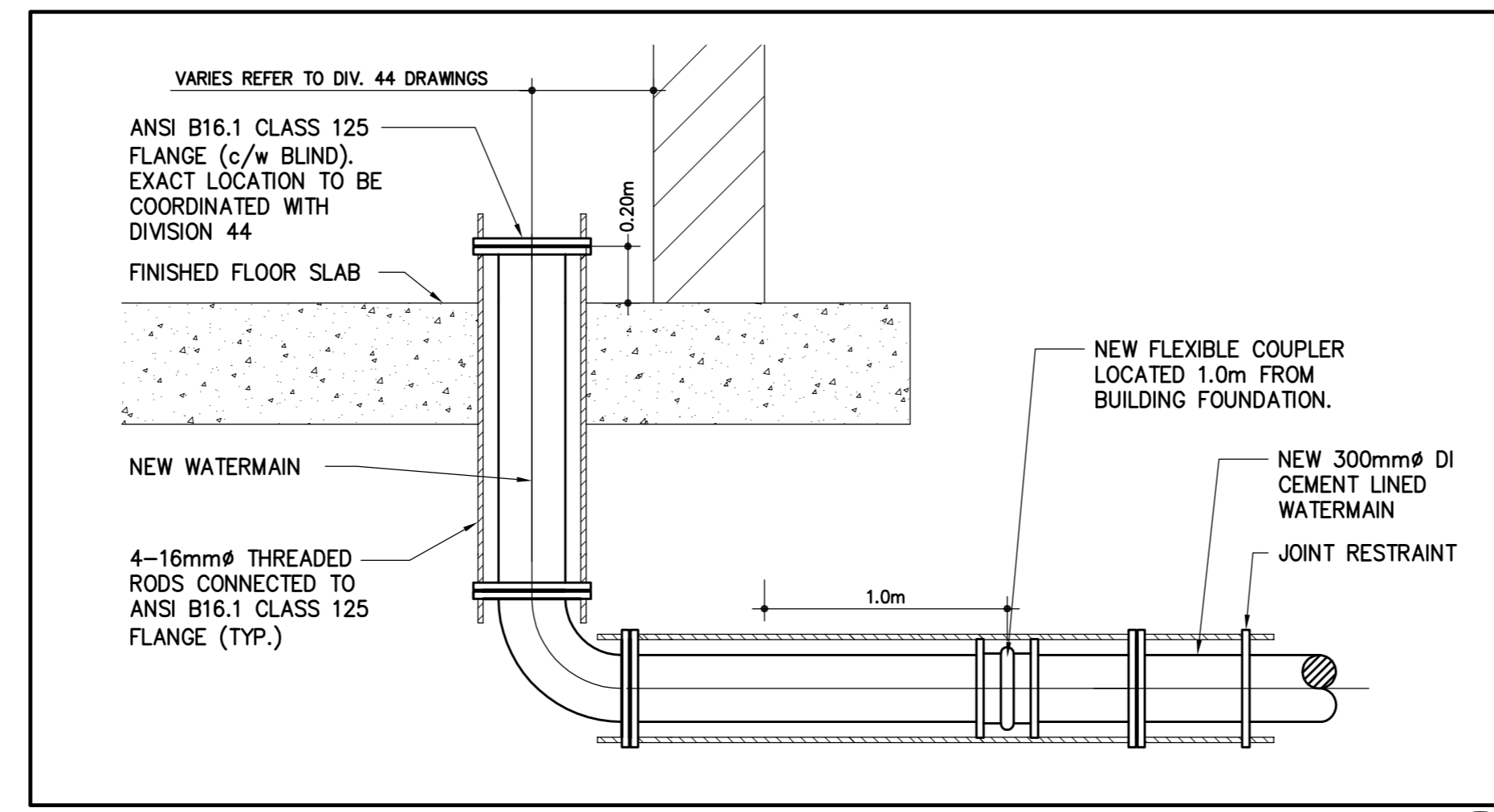
141-14701-00-C100_101.dwg



TYPICAL BOLLARD DETAIL
N.T.S. 1 C101

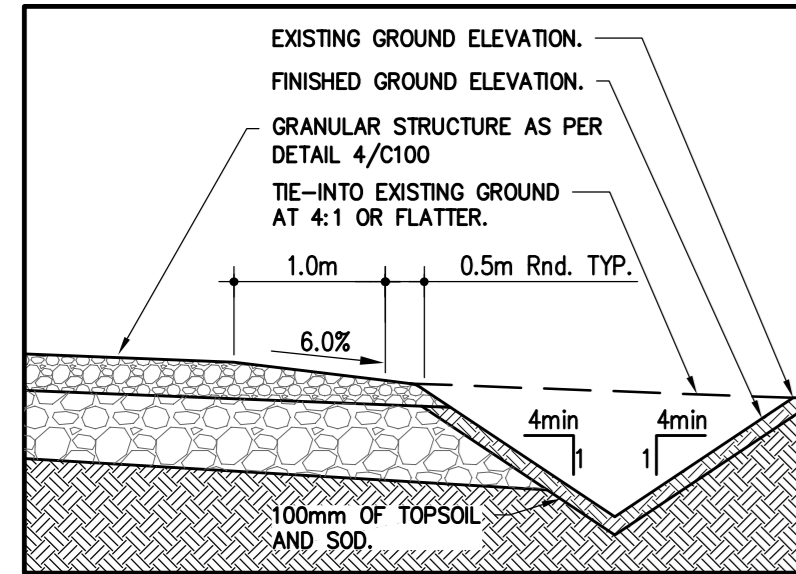
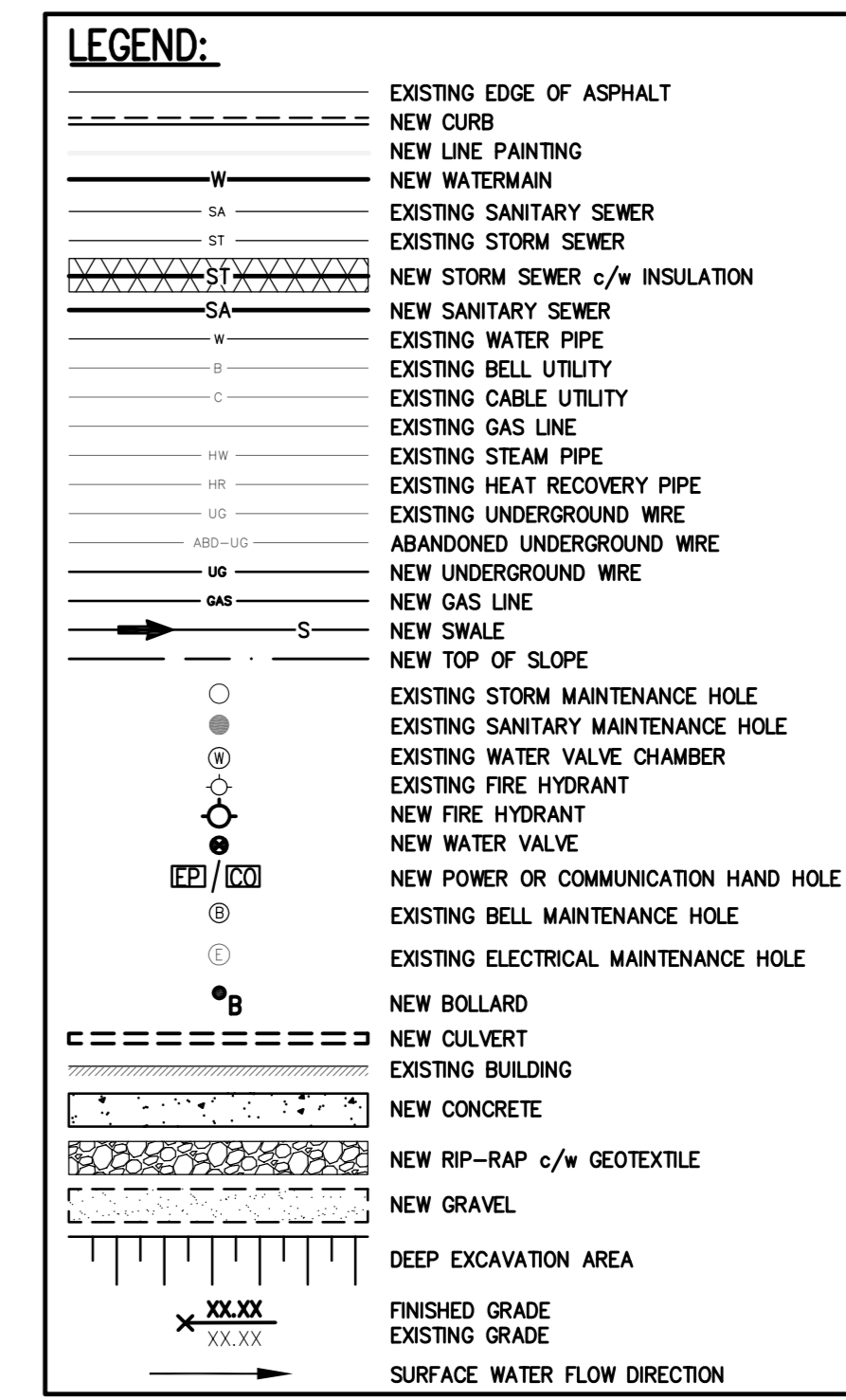


TYPICAL SINGLE TRENCH DETAIL
N.T.S. 2 C101

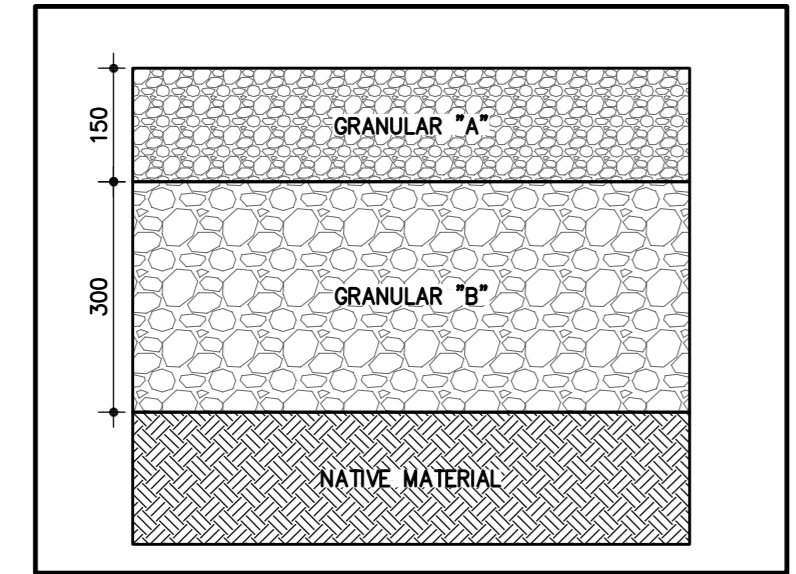


TYPICAL DETAIL OF WATERMAIN INSTALLATION AT BUILDING
SCALE: N.T.S. 3 C101

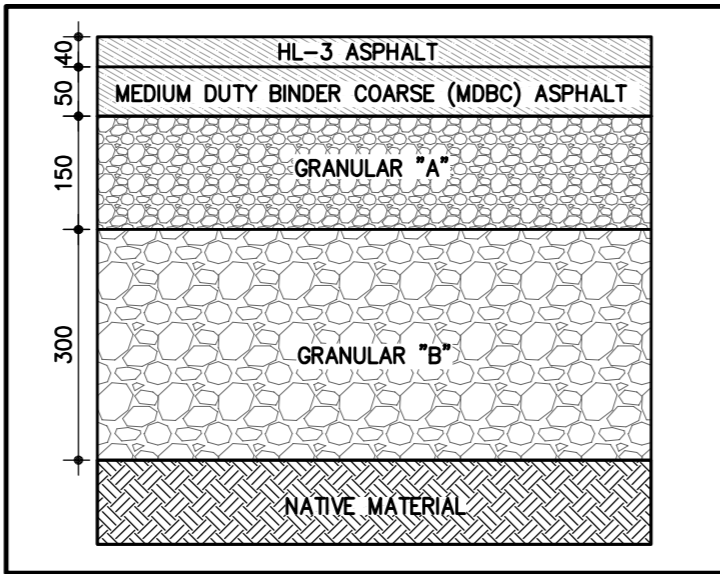
- GENERAL NOTES:**
- CONTRACTOR TO VERIFY LOCATION OF ALL BURIED SERVICES PRIOR TO START OF CONSTRUCTION.
 - TOPOGRAPHIC INFORMATION PROVIDED BY RONALD H. SMITH LTD. (JULY 2012). REFER TO CONTROL POINT (00819730538) LOCATION SHOWN ON KEY PLAN, NORTHING=4899107.479, EASTING=375921.245, ELEVATION = 84.223m.
 - GEOTECHNICAL INFORMATION PROVIDED BY DBA ENGINEERING LTD. (NOVEMBER 2012).
 - EXISTING BUILDINGS AND TREES TO BE PROTECTED DURING CONSTRUCTION UNLESS INDICATED OTHERWISE.
 - REINSTATE DISTURBED AREAS TO ORIGINAL CONDITION OR BETTER AND GRADE SURROUNDING AREAS AT 4:1V FOR TIE-IN. COORDINATE WITH DEPARTMENT REPRESENTATIVE PRIOR TO COMMENCING RESTORATION.
 - HEAVY DUTY SILT FENCE AS PER OPSD 219.130 TO BE INSTALLED DOWN STREAM OF CONSTRUCTION.
 - (S) - SWALE GRADE; (TOC) - TOP OF CURB GRADE; (BOC) - BOTTOM OF CURB GRADE.
 - TEST EXCAVATIONS ARE TO BE COMPLETED AT ALL UTILITY TIE-INS AND UTILITY CROSSINGS. EXCAVATION IS TO BE COMPLETED AND ANY DISCREPANCIES OR CONFLICTS WITH THE INFORMATION PROVIDED IS TO BE SUBMITTED TO THE DEPARTMENTAL REPRESENTATIVE SEVEN (7) DAYS IN ADVANCE OF THE WORK.
 - THE CONTRACTOR IS TO COORDINATE ALL TRENCHING ACTIVITIES WITH THE DEPARTMENTAL REPRESENTATIVE. THE LENGTH OF OPEN UTILITY TRENCHES SHALL BE LIMITED TO 5.0m OR AS OTHERWISE DIRECTED BY THE DEPARTMENTAL REPRESENTATIVE. TRENCHING SHALL START AT THE TIE IN OR THE NEW BUILDING.
 - 1.0m HIGH RIGID FENCING TO BE PLACED AROUND THE ENTIRE PERIMETER OF ALL OPEN EXCAVATIONS.



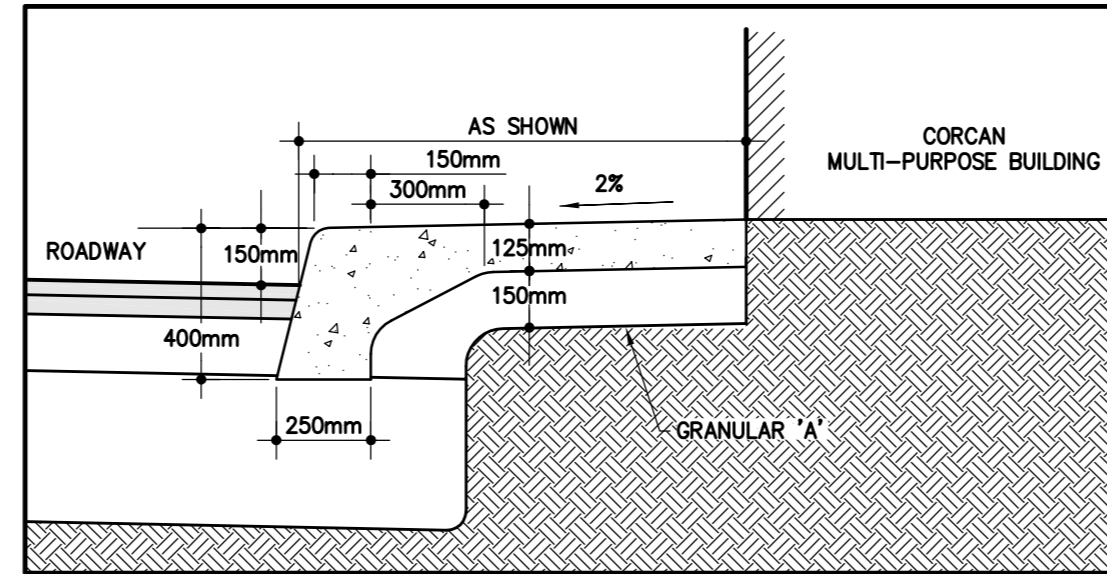
TYPICAL SWALE/GRAVEL SHOULDER
N.T.S. 4 C100



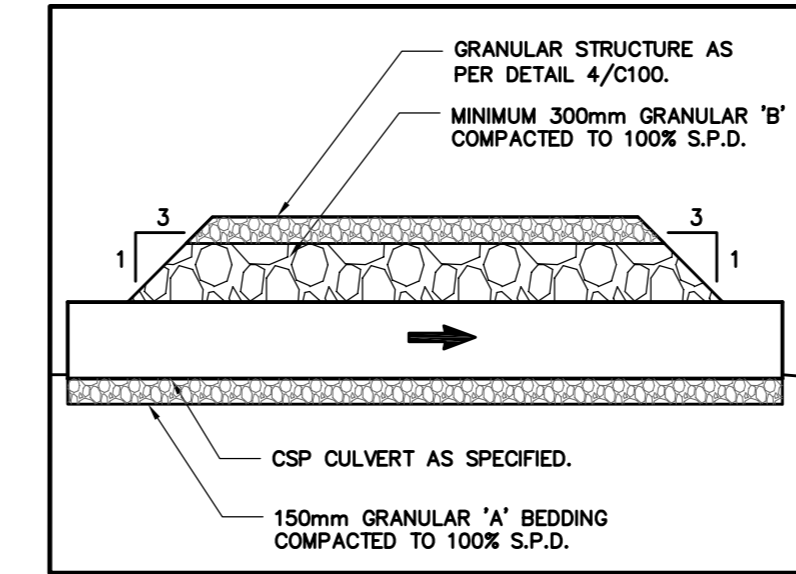
GRANULAR STRUCTURE DETAIL
N.T.S. 5 C101



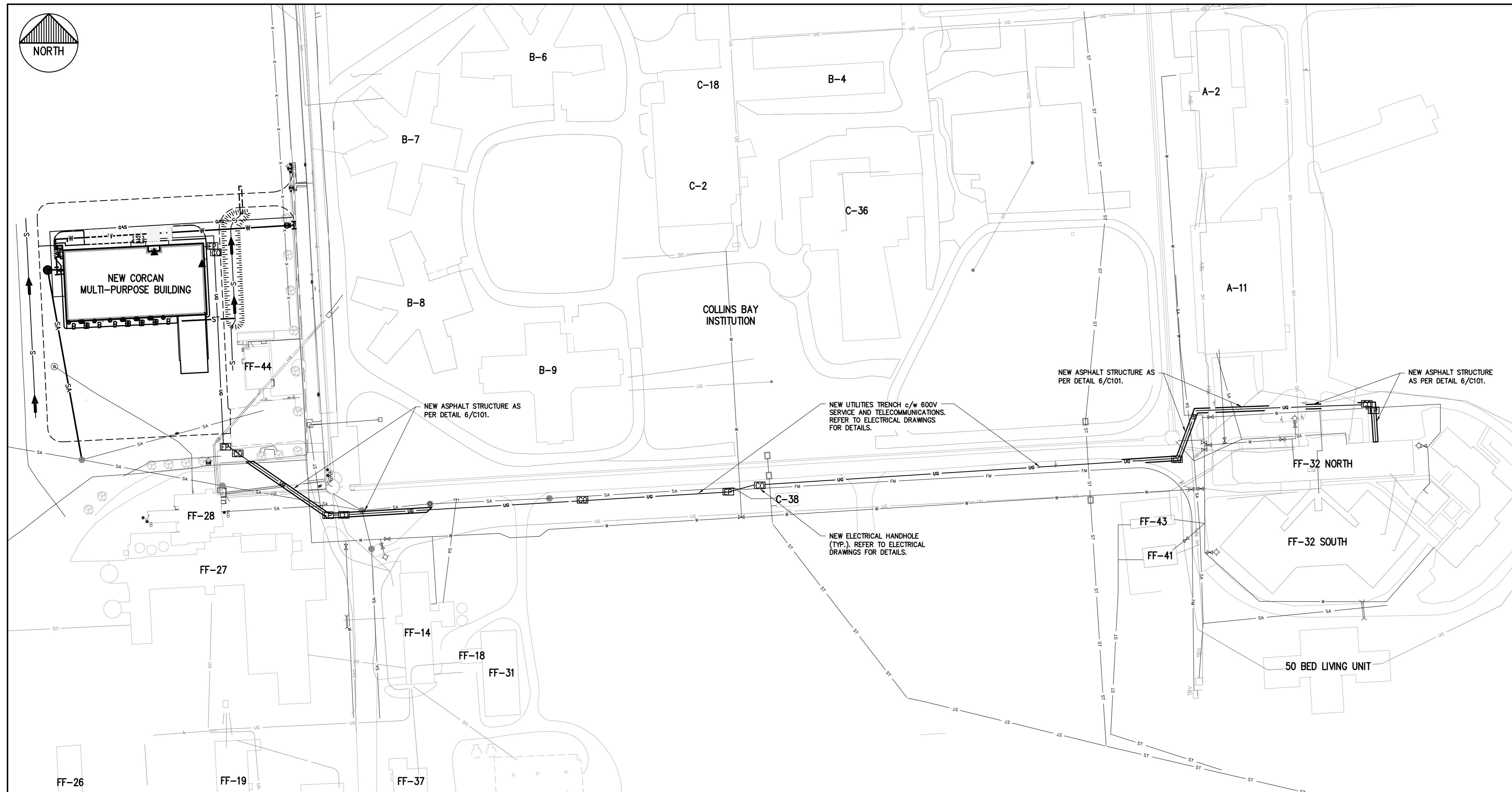
ASPHALT STRUCTURE DETAIL
SCALE: N.T.S. 6 C101



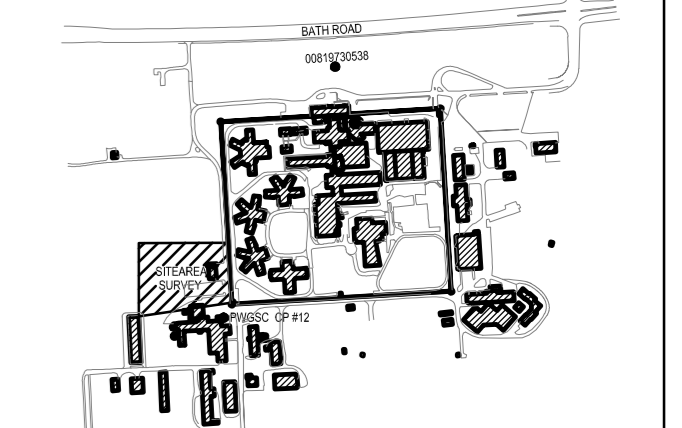
MONOLITHIC CONCRETE CURB AND SIDEWALK DETAIL
N.T.S. 7 C101



TYP. DRIVEWAY CULVERT DETAIL
SCALE: N.T.S. 8 C101



ELECTRICAL ROUTING
SCALE: 1:1000 9 C101



01	ISSUED FOR TENDER	15/03/16
----	-------------------	----------

revision	description	date
A	A detail no. n° du détail	A
B	B location drawing no. sur dessin n°	B
C	C drawing no. dessin n°	C

project: **CSC MULTI-PURPOSE BUILDING
CBI MINIMUM INSTITUTION (FRONTENAC)**
KINGSTON, ONTARIO

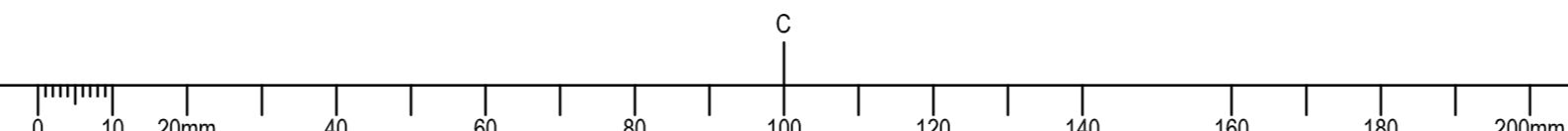
drawing: **CIVIL DETAILS**
dessin

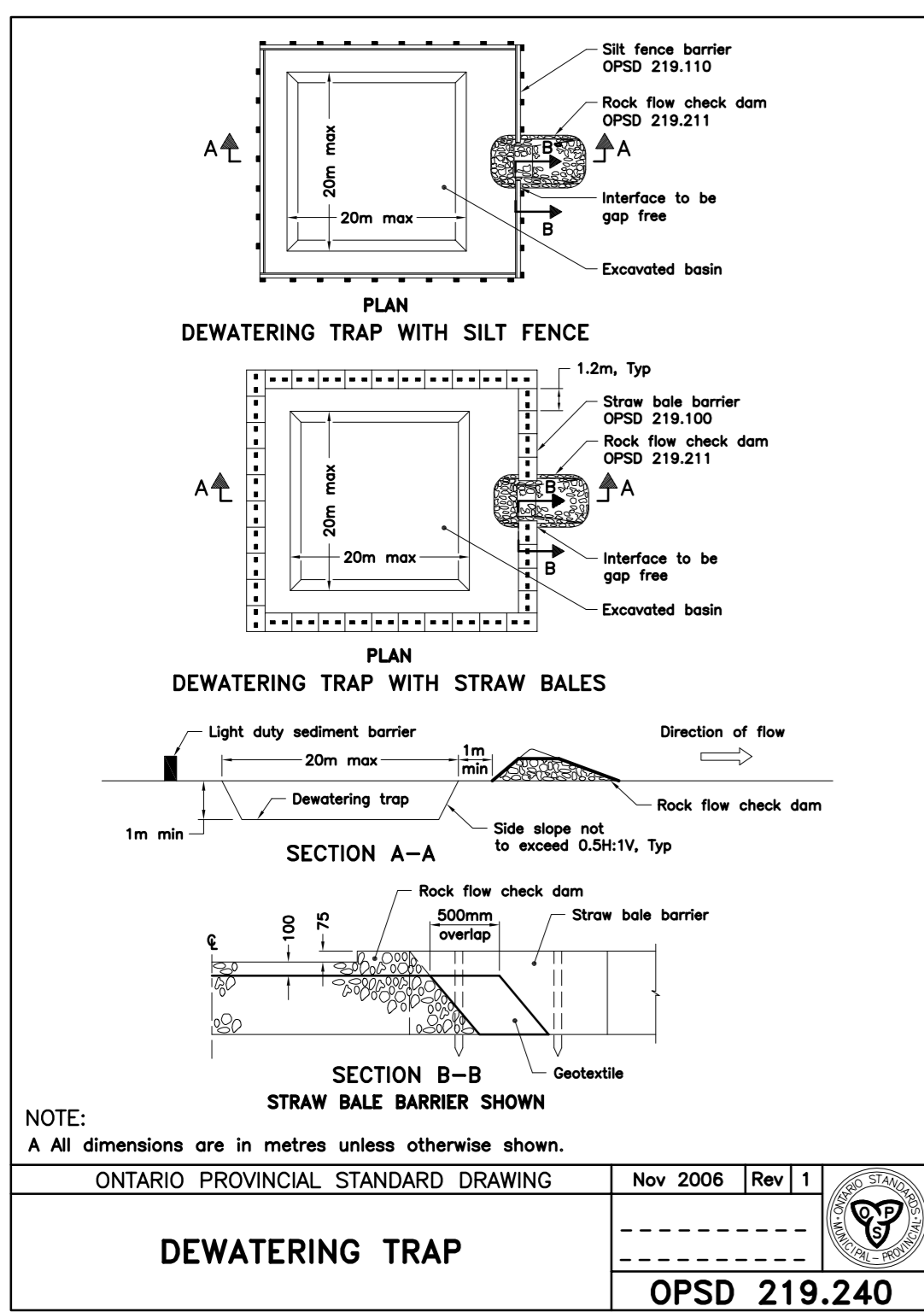
designed	NH	conçu
date	2014/08/11	(yyyy/mm/dd)
drawn	NH	dessiné
date	2014/08/11	(yyyy/mm/dd)
reviewed	KC	examiné
date	2015/03/12	(yyyy/mm/dd)
approved	MM	approuvé
date	2015/03/12	(yyyy/mm/dd)
Tender	DUNCAN PARKER	Soumission

Project Manager / Administrateur de projets
project no. / no. du projet

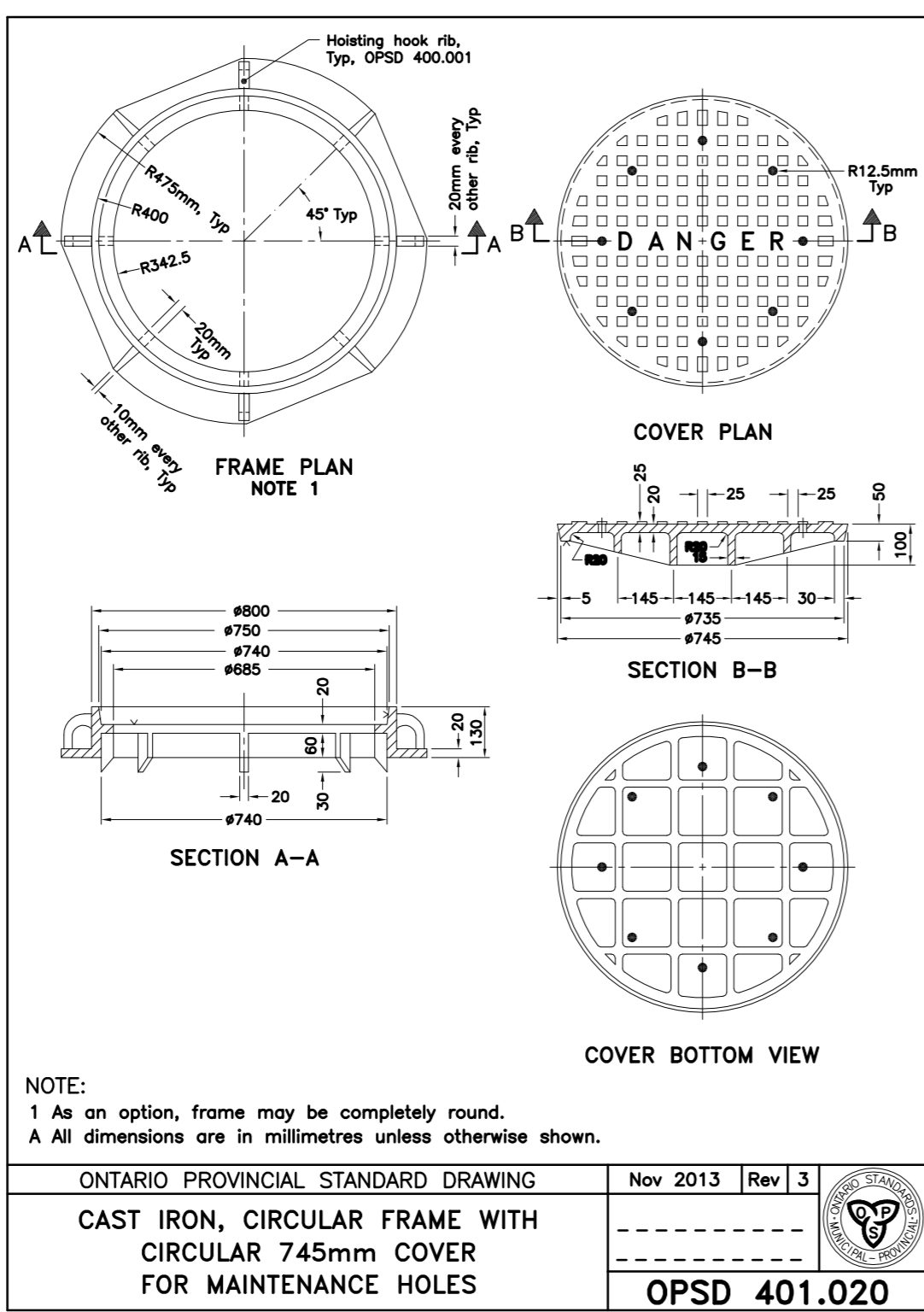
R.055776.001

drawing no. / no. du dessin
C101

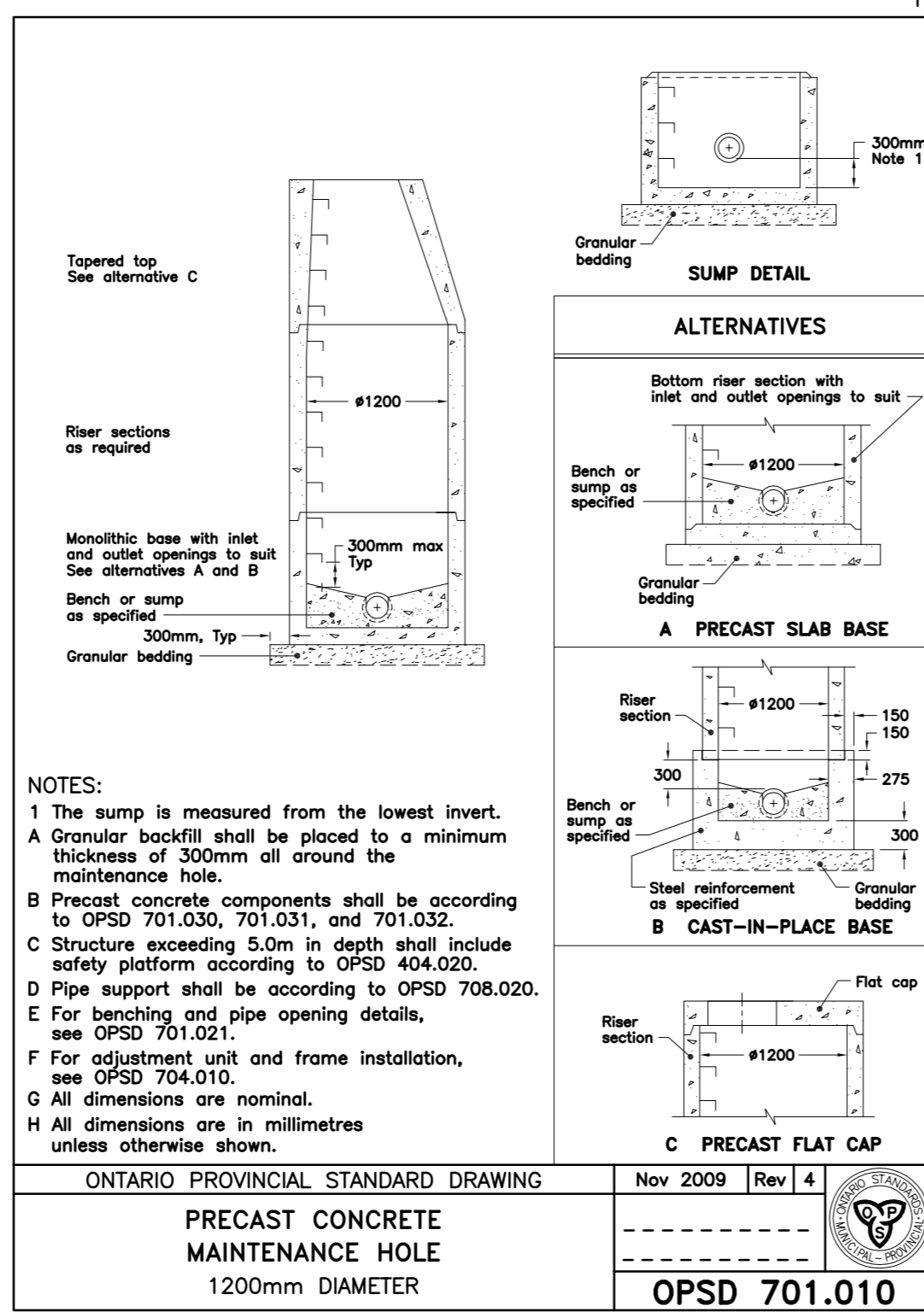




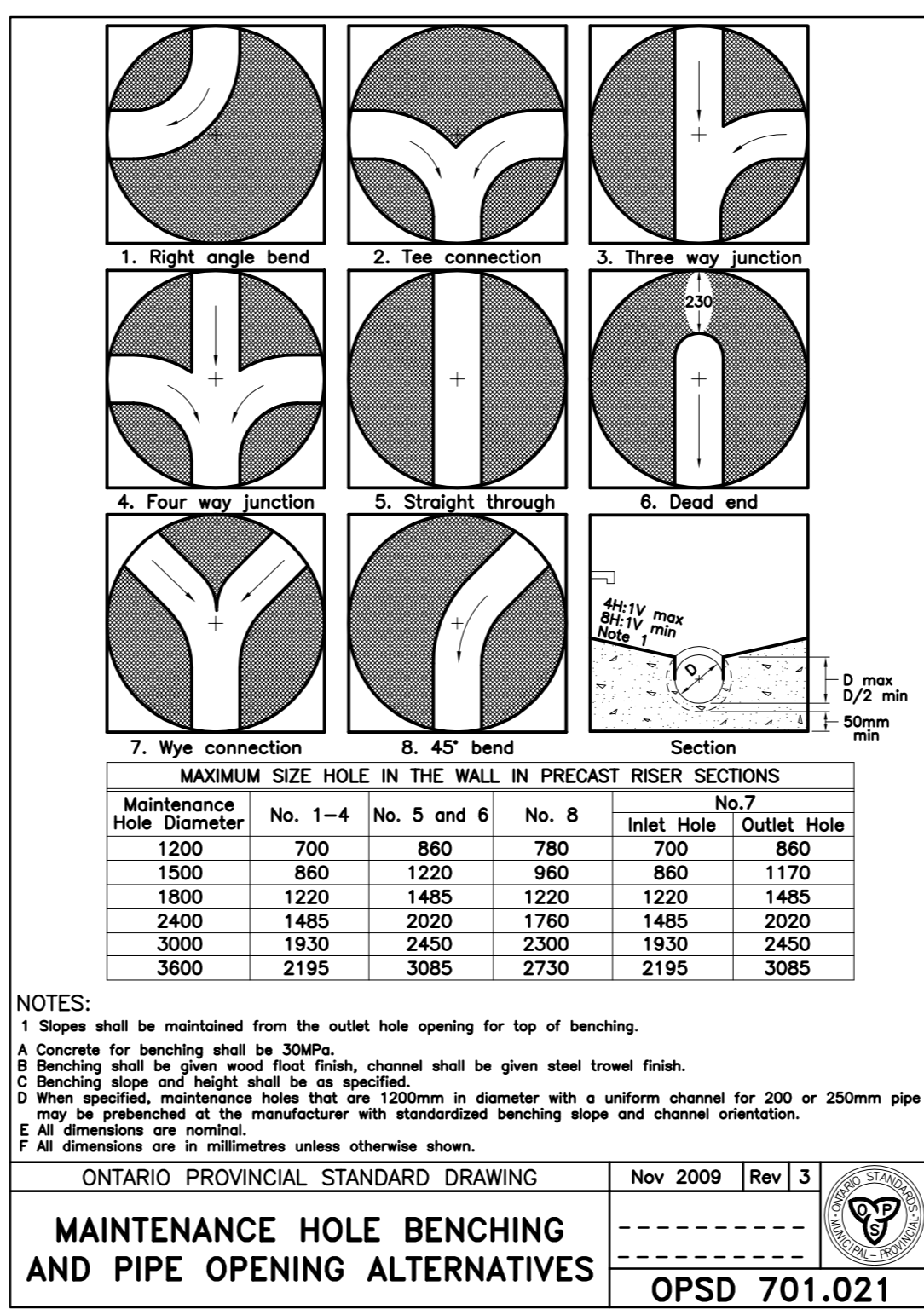
ONTARIO PROVINCIAL STANDARD DRAWING Nov 2006 [Rev 1]
DEWATERING TRAP
 OPSD 219.240



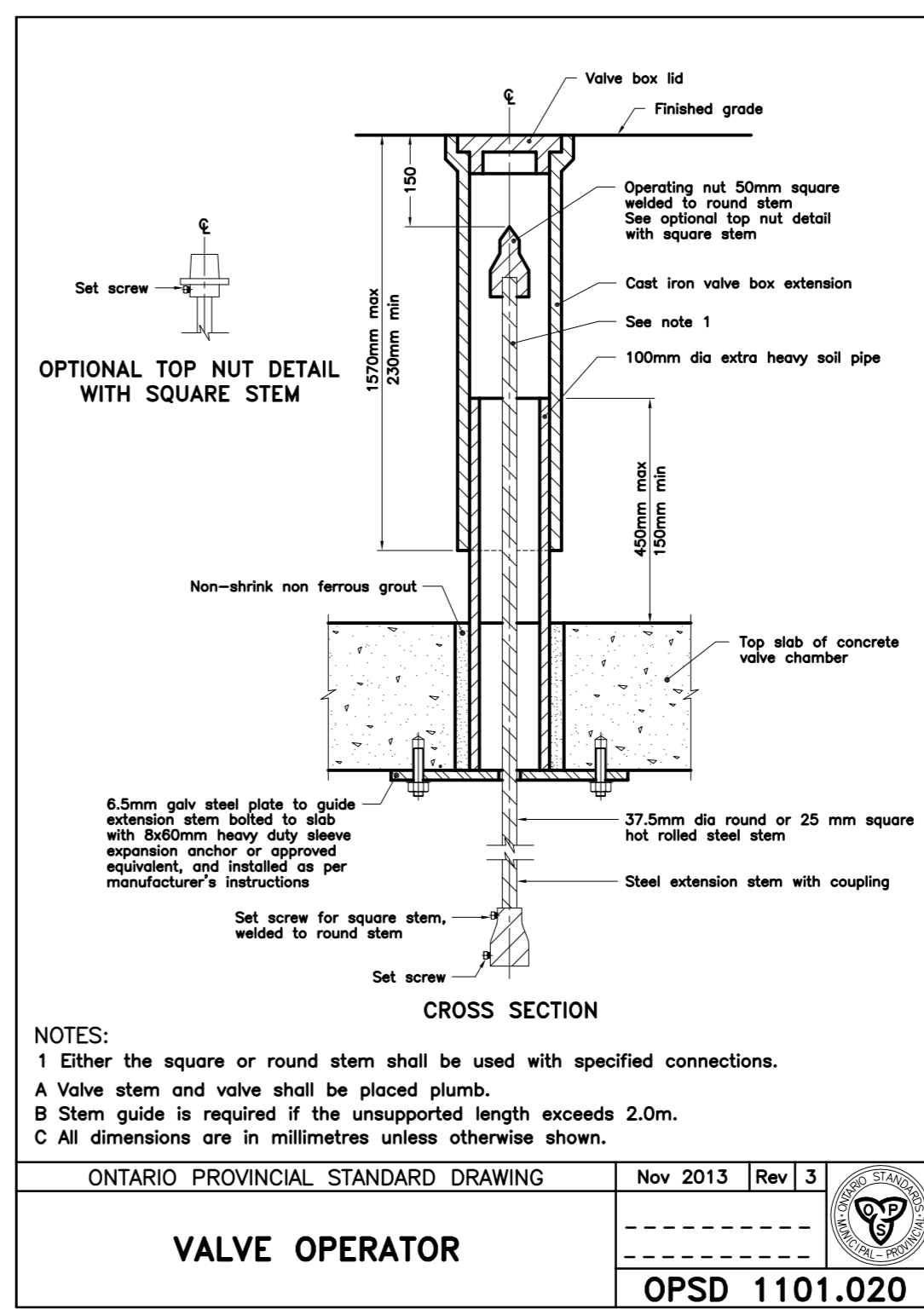
ONTARIO PROVINCIAL STANDARD DRAWING Nov 2013 [Rev 3]
CAST IRON, CIRCULAR FRAME WITH CIRCULAR 745mm COVER FOR MAINTENANCE HOLES
 OPSD 401.020



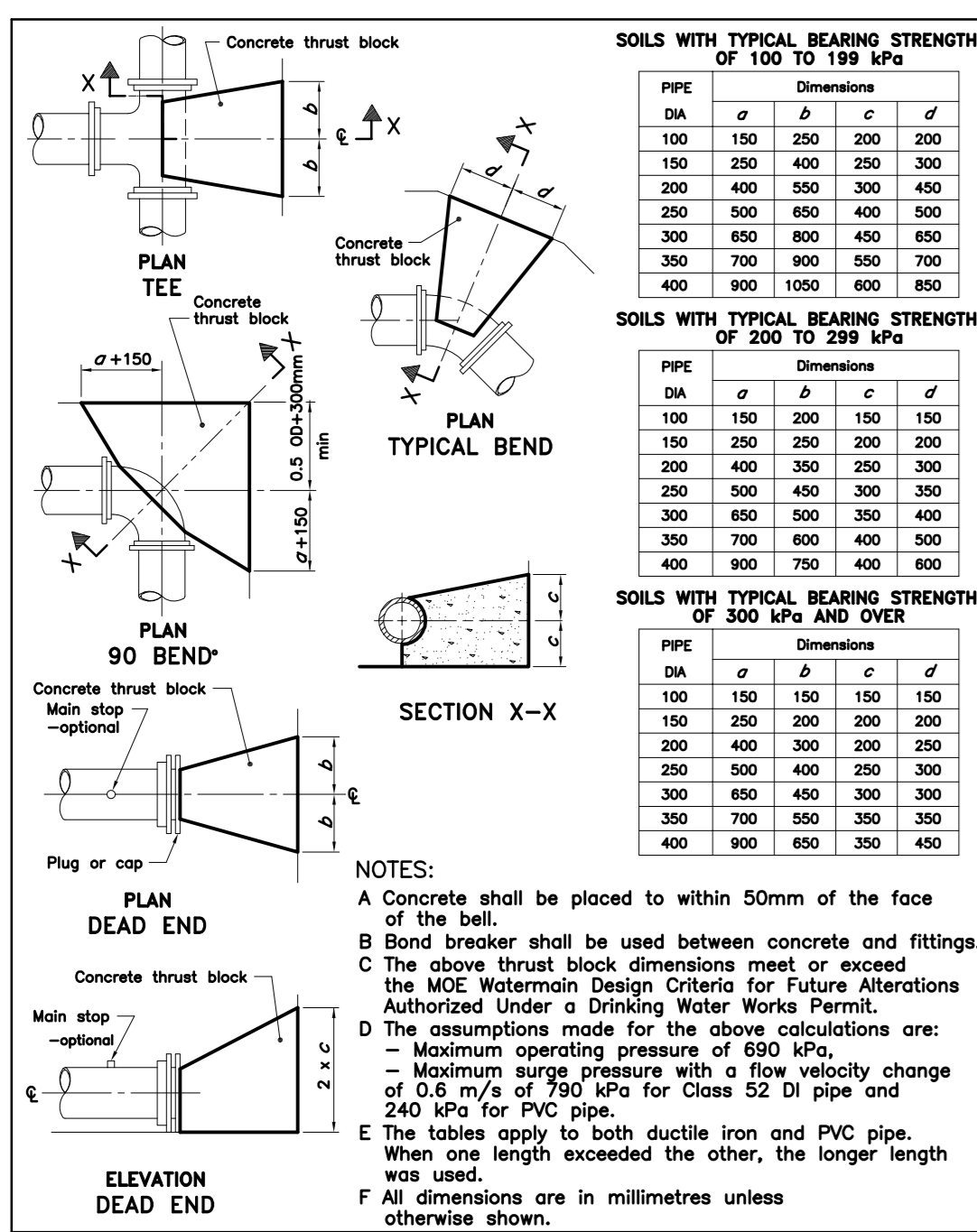
ONTARIO PROVINCIAL STANDARD DRAWING Nov 2009 [Rev 4]
PRECAST CONCRETE MAINTENANCE HOLE 1200mm DIAMETER
 OPSD 701.010



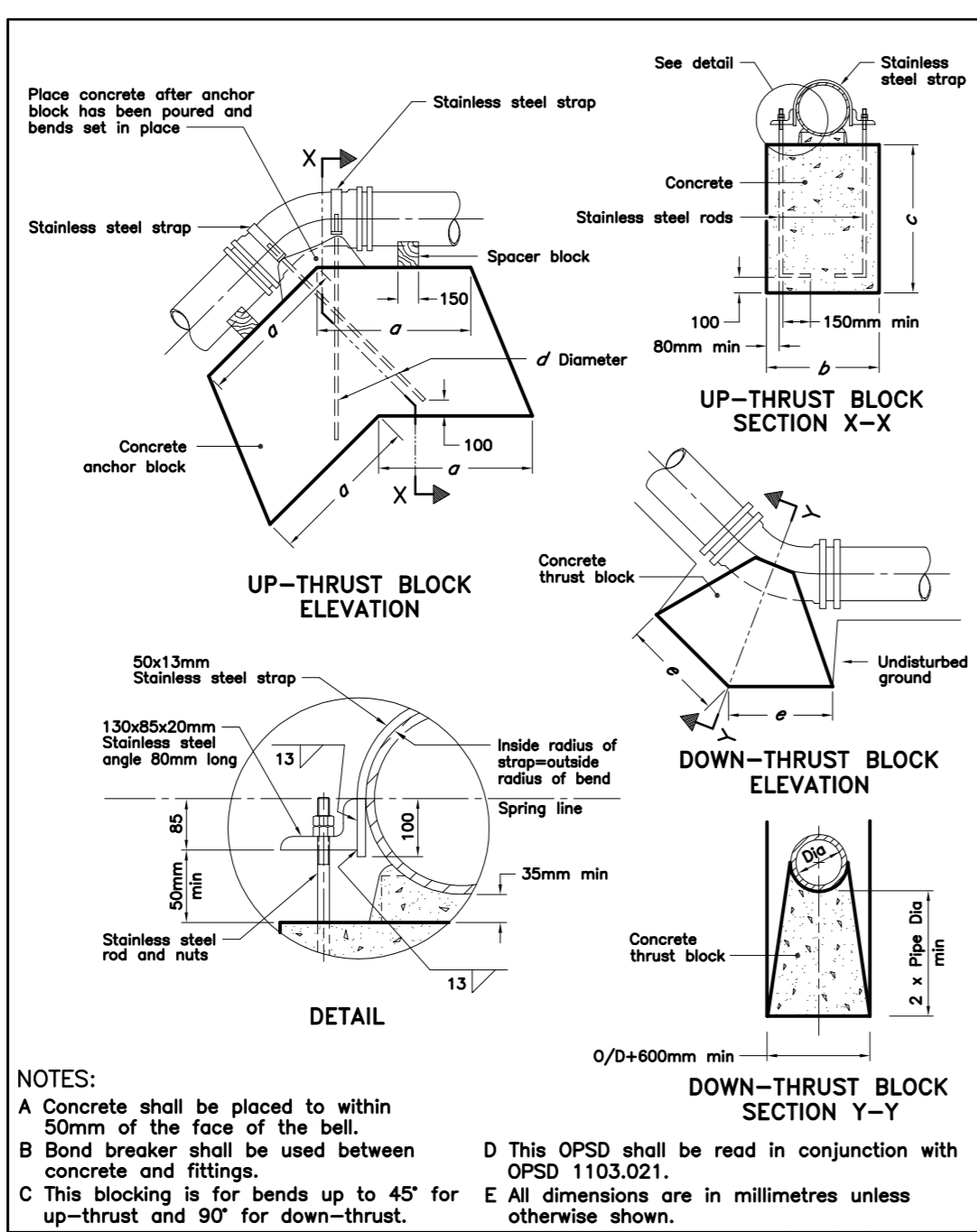
ONTARIO PROVINCIAL STANDARD DRAWING Nov 2009 [Rev 3]
MAINTENANCE HOLE BENCHING AND PIPE OPENING ALTERNATIVES
 OPSD 701.021



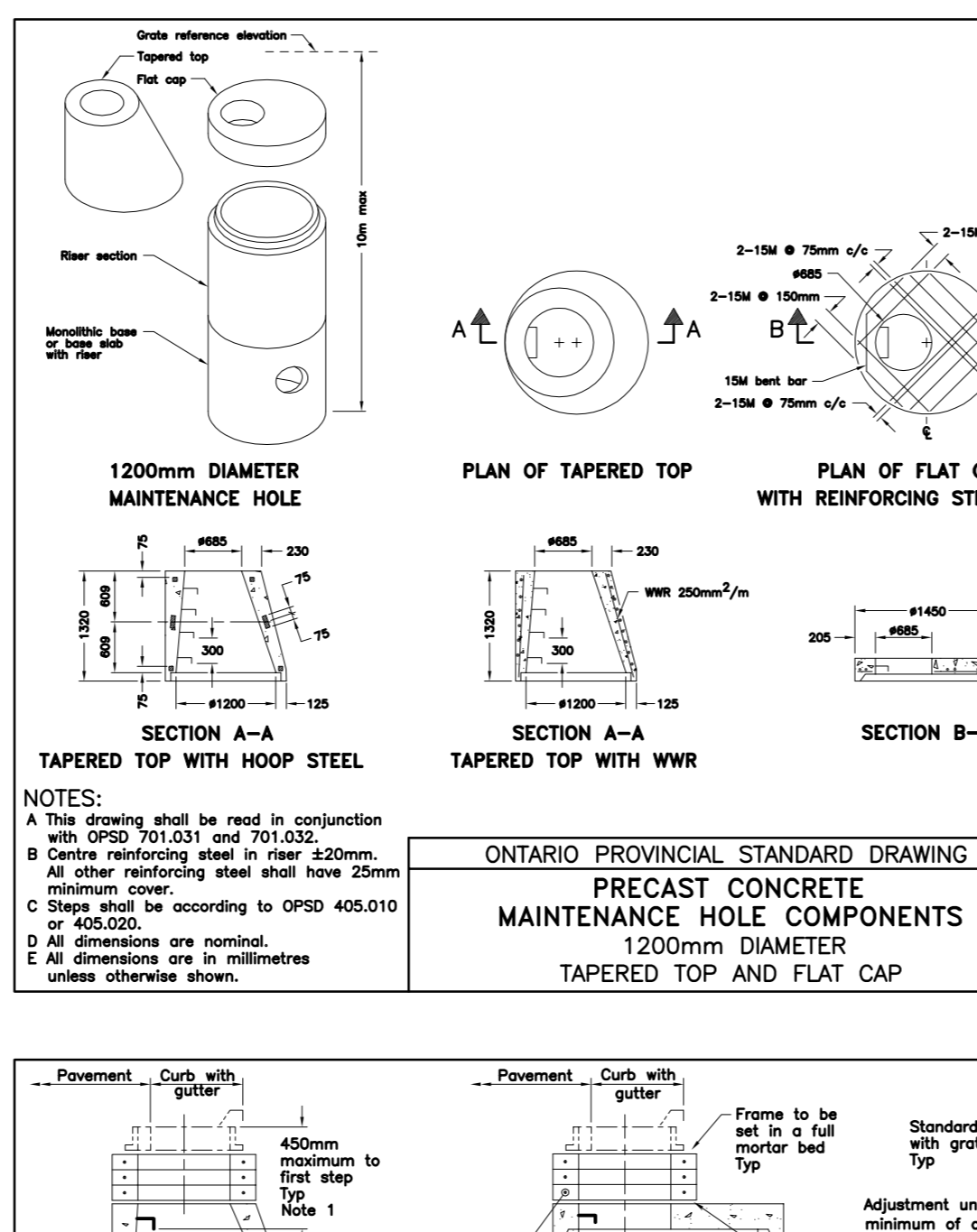
ONTARIO PROVINCIAL STANDARD DRAWING Nov 2013 [Rev 3]
VALVE OPERATOR
 OPSD 1101.020



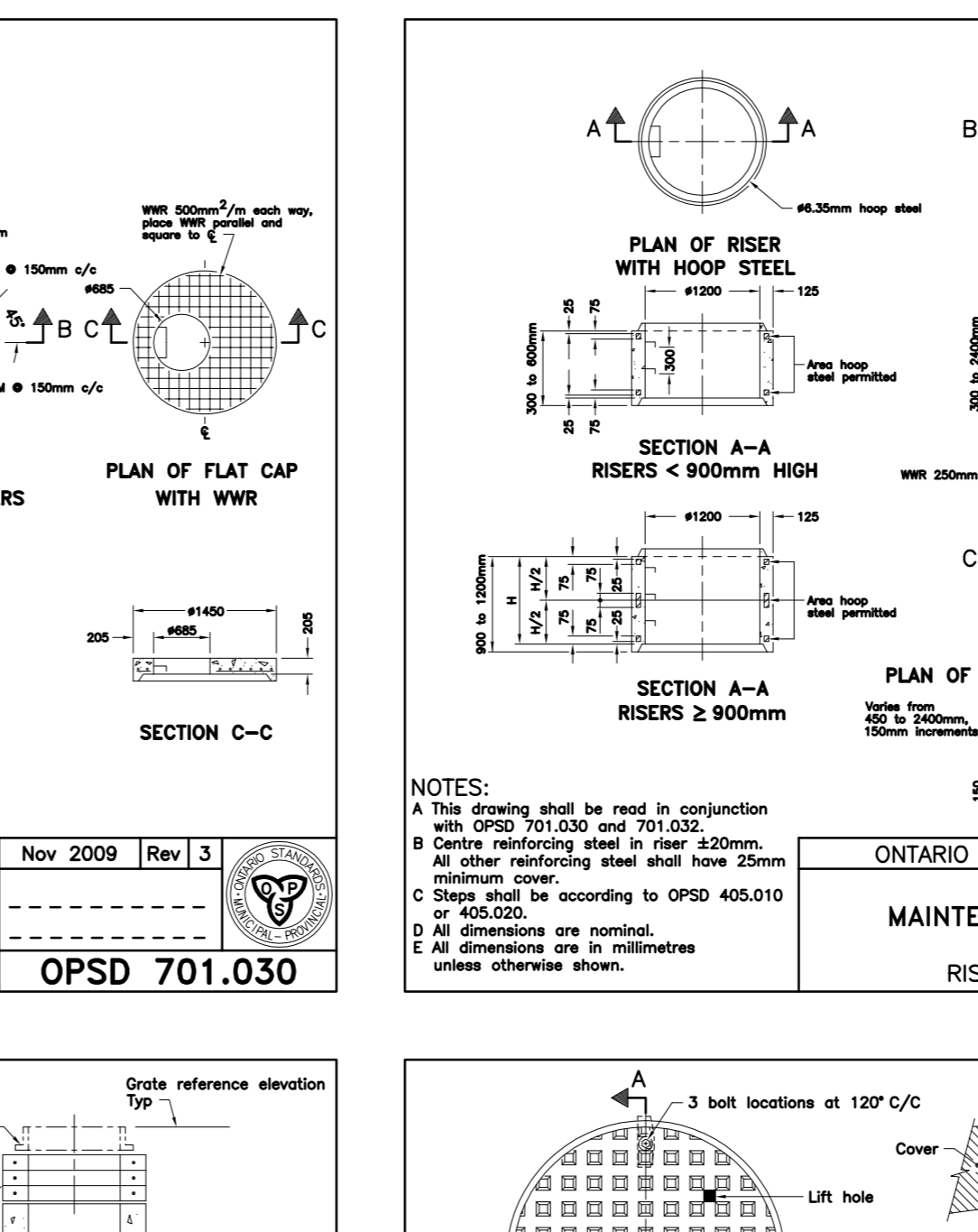
ONTARIO PROVINCIAL STANDARD DRAWING Nov 2013 [Rev 2]
CONCRETE THRUST BLOCKS FOR TEES, PLUGS, AND HORIZONTAL BENDS
 OPSD 1103.010



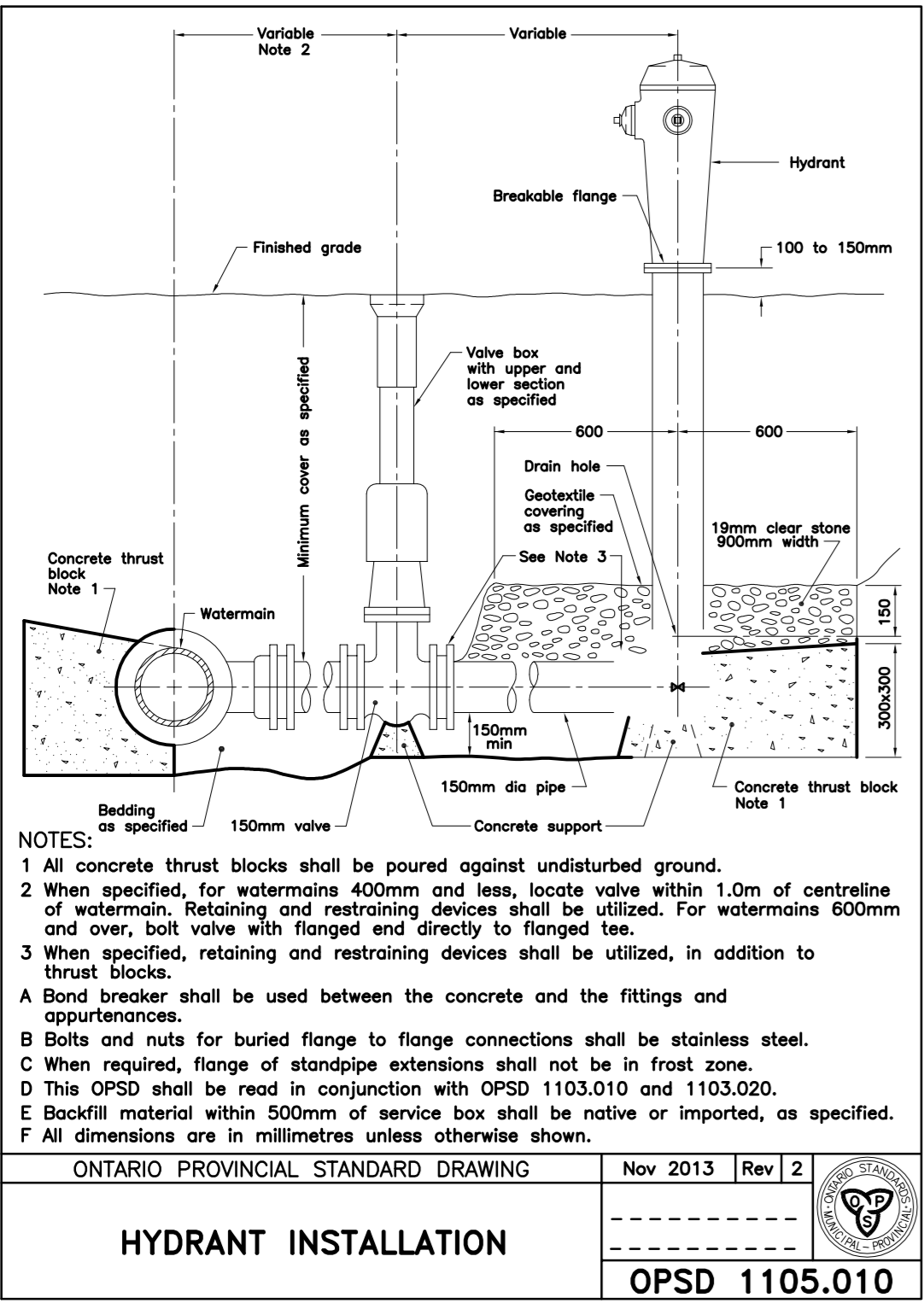
ONTARIO PROVINCIAL STANDARD DRAWING Nov 2013 [Rev 3]
CONCRETE THRUST BLOCKS FOR VERTICAL BENDS
 OPSD 1103.020



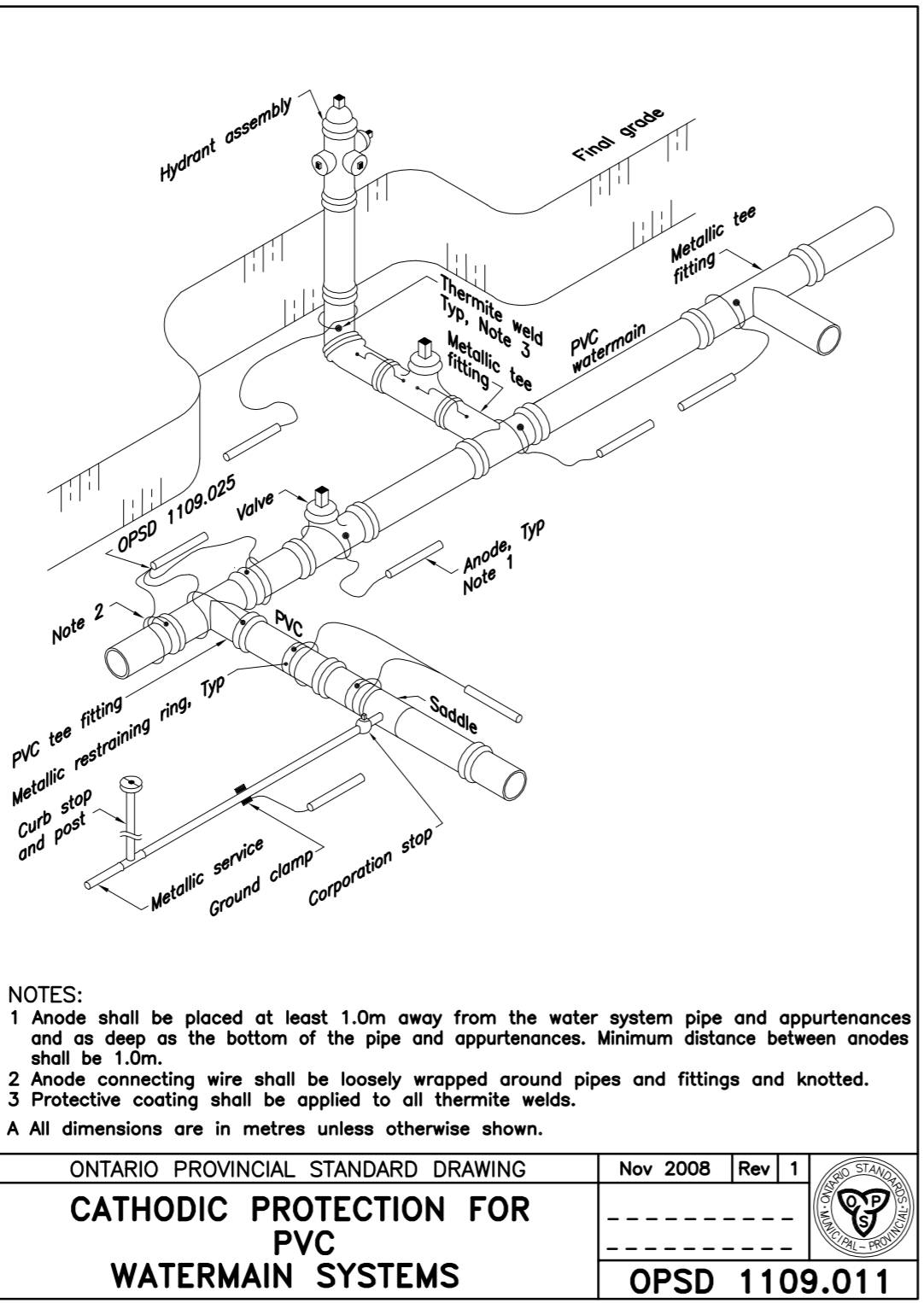
ONTARIO PROVINCIAL STANDARD DRAWING Nov 2009 [Rev 3]
PRECAST CONCRETE MAINTENANCE HOLE COMPONENTS TAPERED TOP AND FLAT CAP
 OPSD 701.030



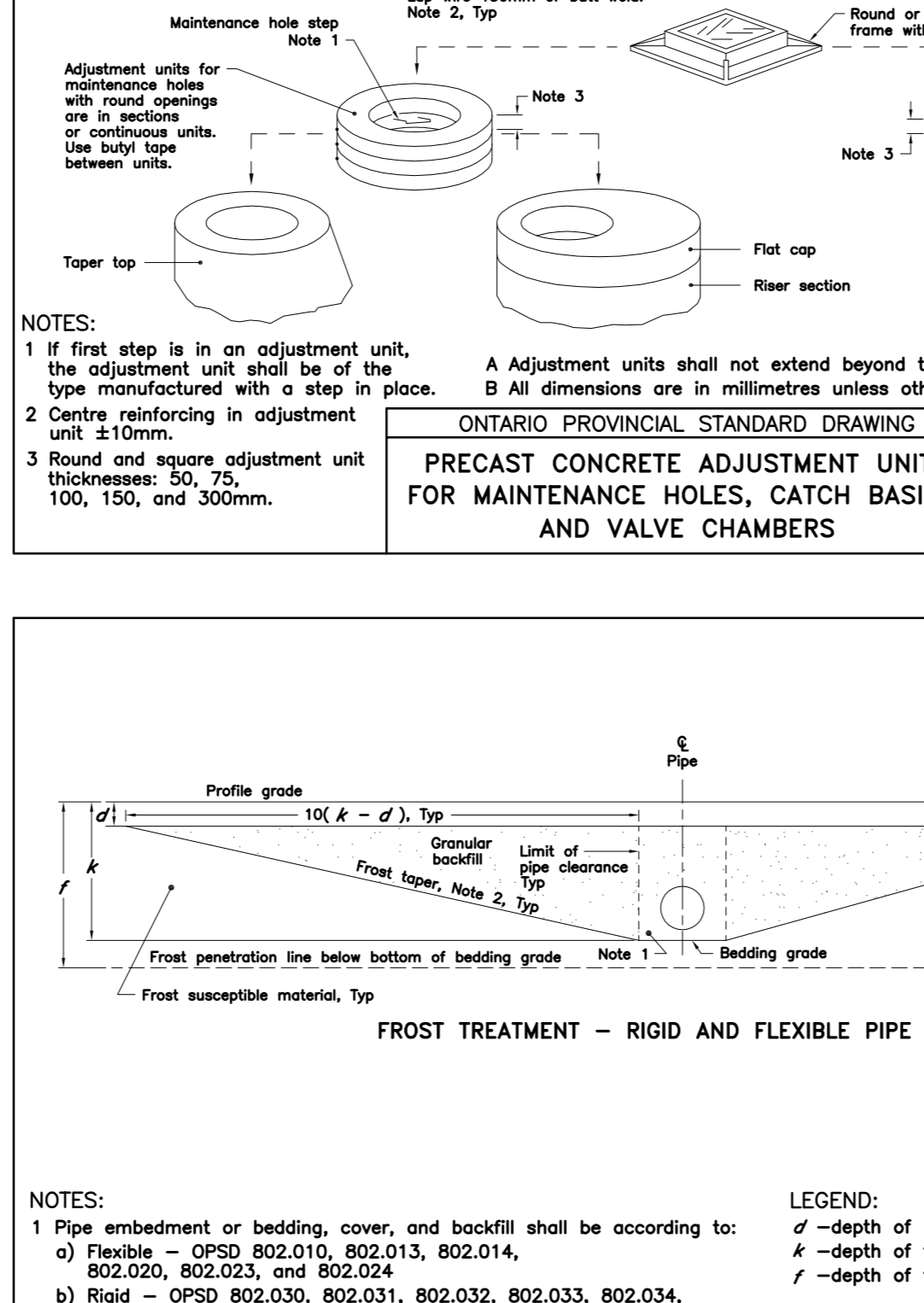
ONTARIO PROVINCIAL STANDARD DRAWING Nov 2009 [Rev 1]
PRECAST CONCRETE MAINTENANCE HOLE COMPONENTS RISER AND MONOLITHIC BASE
 OPSD 701.031



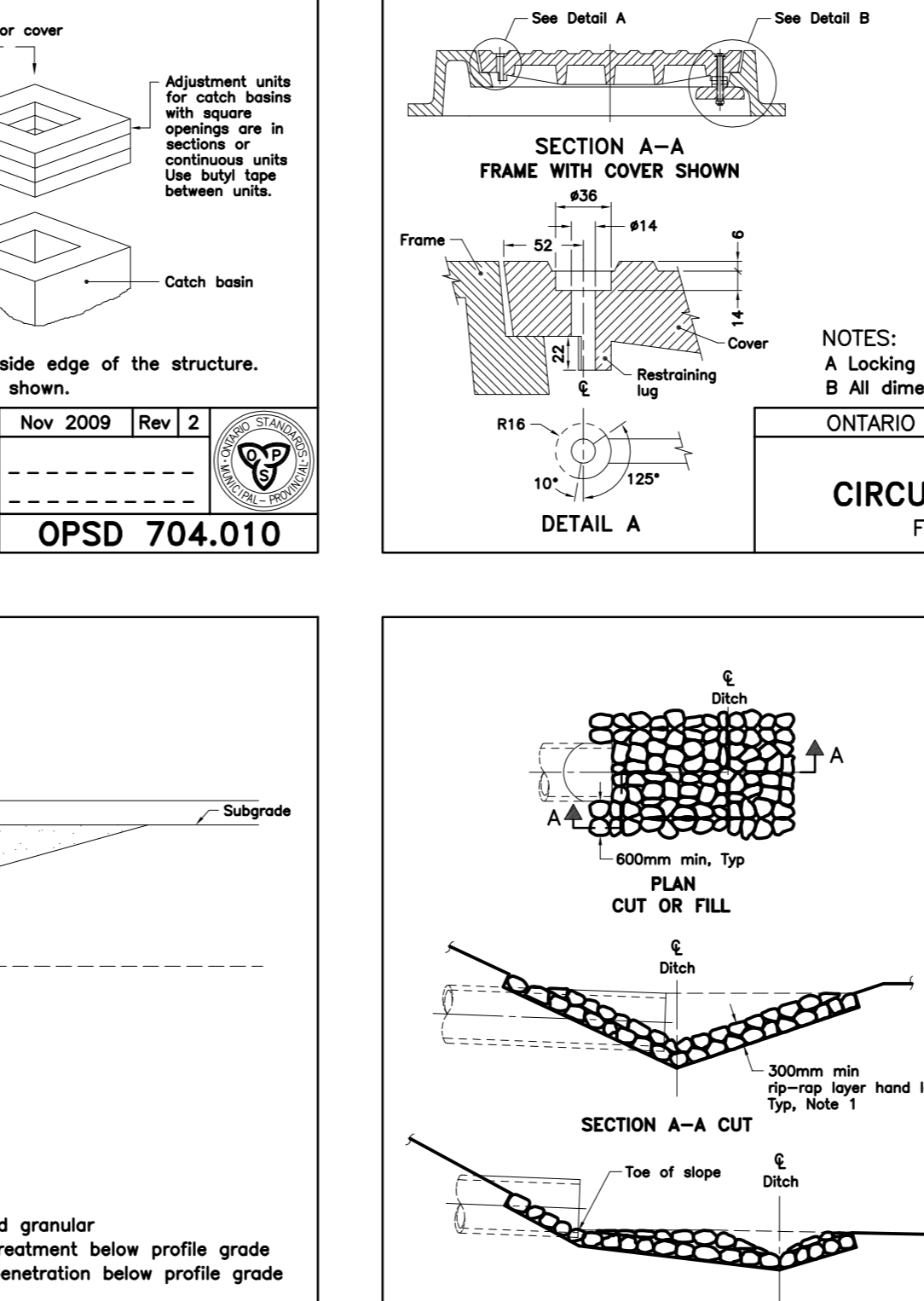
ONTARIO PROVINCIAL STANDARD DRAWING Nov 2013 [Rev 2]
HYDRANT INSTALLATION
 OPSD 1105.010



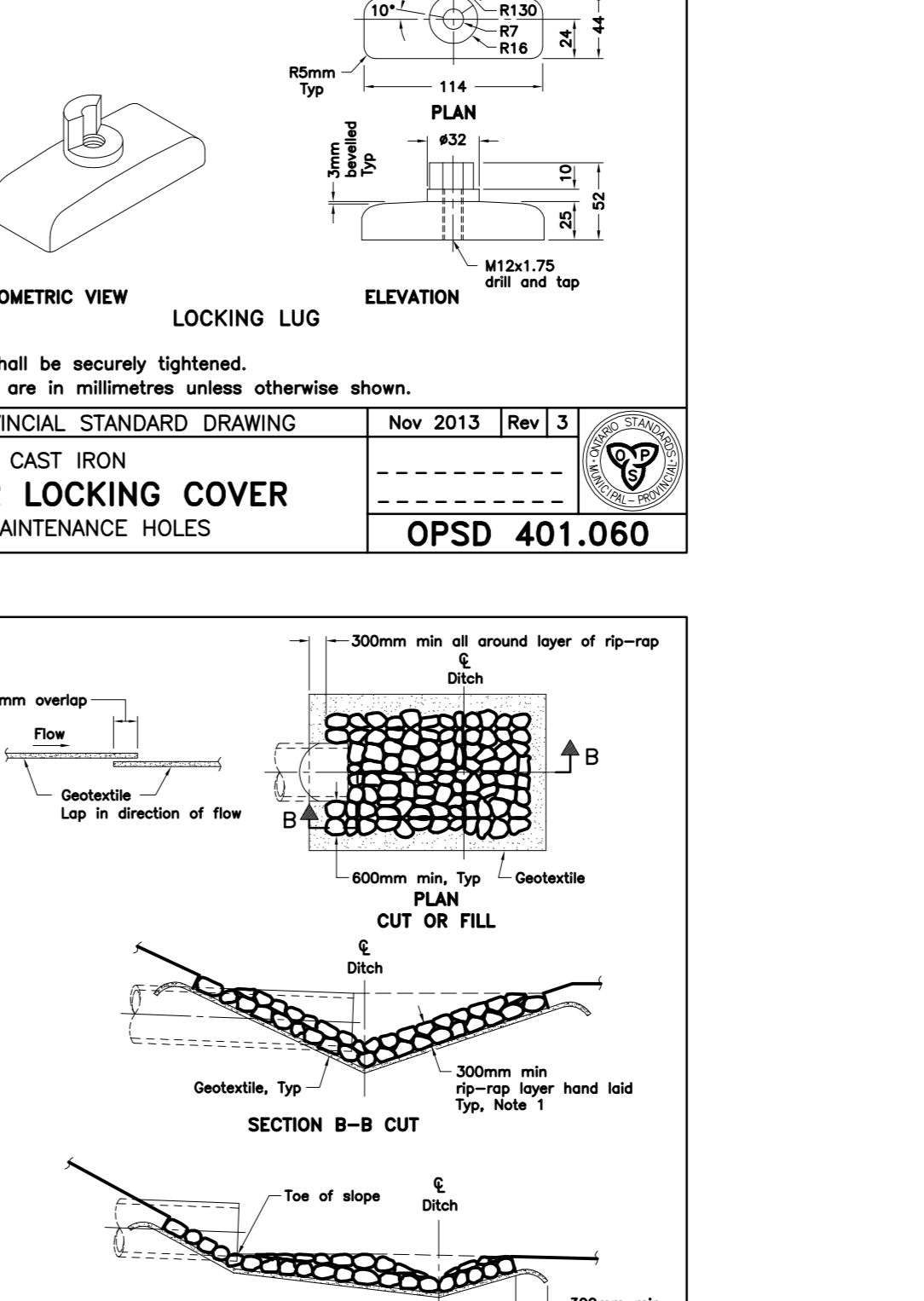
ONTARIO PROVINCIAL STANDARD DRAWING Nov 2008 [Rev 1]
CATHODIC PROTECTION FOR PVC WATERMAIN SYSTEMS
 OPSD 1109.011



ONTARIO PROVINCIAL STANDARD DRAWING Nov 2009 [Rev 2]
PRECAST CONCRETE ADJUSTMENT UNITS FOR MAINTENANCE HOLES, CATCH BASINS, AND VALVE CHAMBERS
 OPSD 704.010



ONTARIO PROVINCIAL STANDARD DRAWING Nov 2013 [Rev 3]
CAST IRON CIRCULAR LOCKING COVER FOR MAINTENANCE HOLES
 OPSD 401.060



ONTARIO PROVINCIAL STANDARD DRAWING Nov 2013 [Rev 2]
GENERAL RIP-RAP LAYOUT FOR SEWER AND CULVERT OUTLETS
 OPSD 810.010

02.02.2015

141-14701-00-C100_101.dwg

Public Works and Government Services / Travaux publics et Services gouvernementaux Canada

Real Property Operations Branch / Direction générale des opérations immobilières
 Real Property Operations Solutions / Solutions - Opérations immobilières

Project Delivery & Professional and Technical Services / Exécution de projets et Services experts/consils techniques

Watson MacEwen Teramura Architects
 400-116 Lager Street
 Ottawa ON K2P 0Z2
 1613.232.0330
 1613.232.6253

Structural Engineers / Mechanical / Electrical Eng. / Associates
 Haskell Associates
 4001-210 Gladstone Avenue
 Ottawa, Ontario K2P 0Y6
 613.237.2462

Civil Engineers / IT-Telecommunications
 WSP Group
 201-1224 Gathers Road
 Kingston, Ontario K7P 0G2
 613.634.7373

The Atain Group
 206-1680 Woodward Drive
 Ottawa, ON K2C 3R7
 613.739.9424

PROFESSIONAL ENGINEER
 M.S. MORKEA
 10122555
 PROVINCE OF ONTARIO

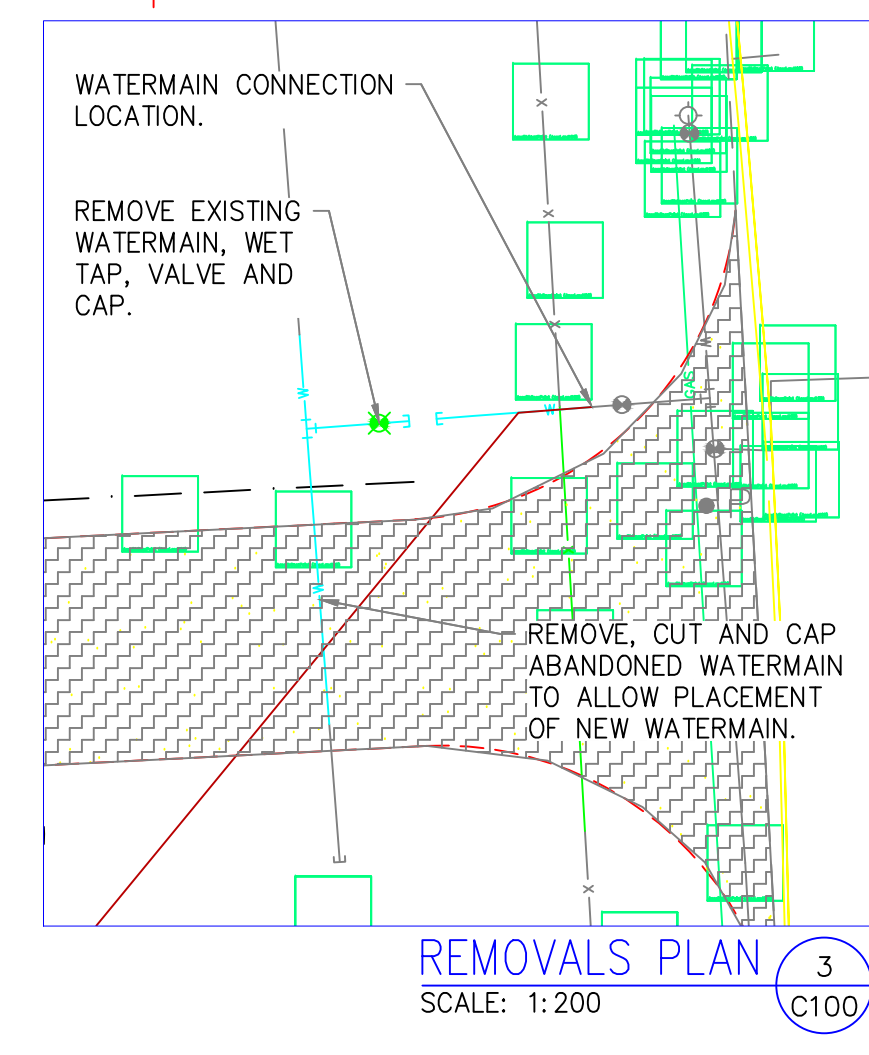
01	ISSUED FOR TENDER	15/03/16
revision	description	date
A	A detail no. n° du détail	A
B	B location drawing no. sur dessin n°	B
C	C drawing no. dessin n°	C

CSC MULTI-PURPOSE BUILDING / CBI MINIMUM INSTITUTION (FRONTENAC)
 KINGSTON, ONTARIO

drawing: desin
 project: projet
 OPDs

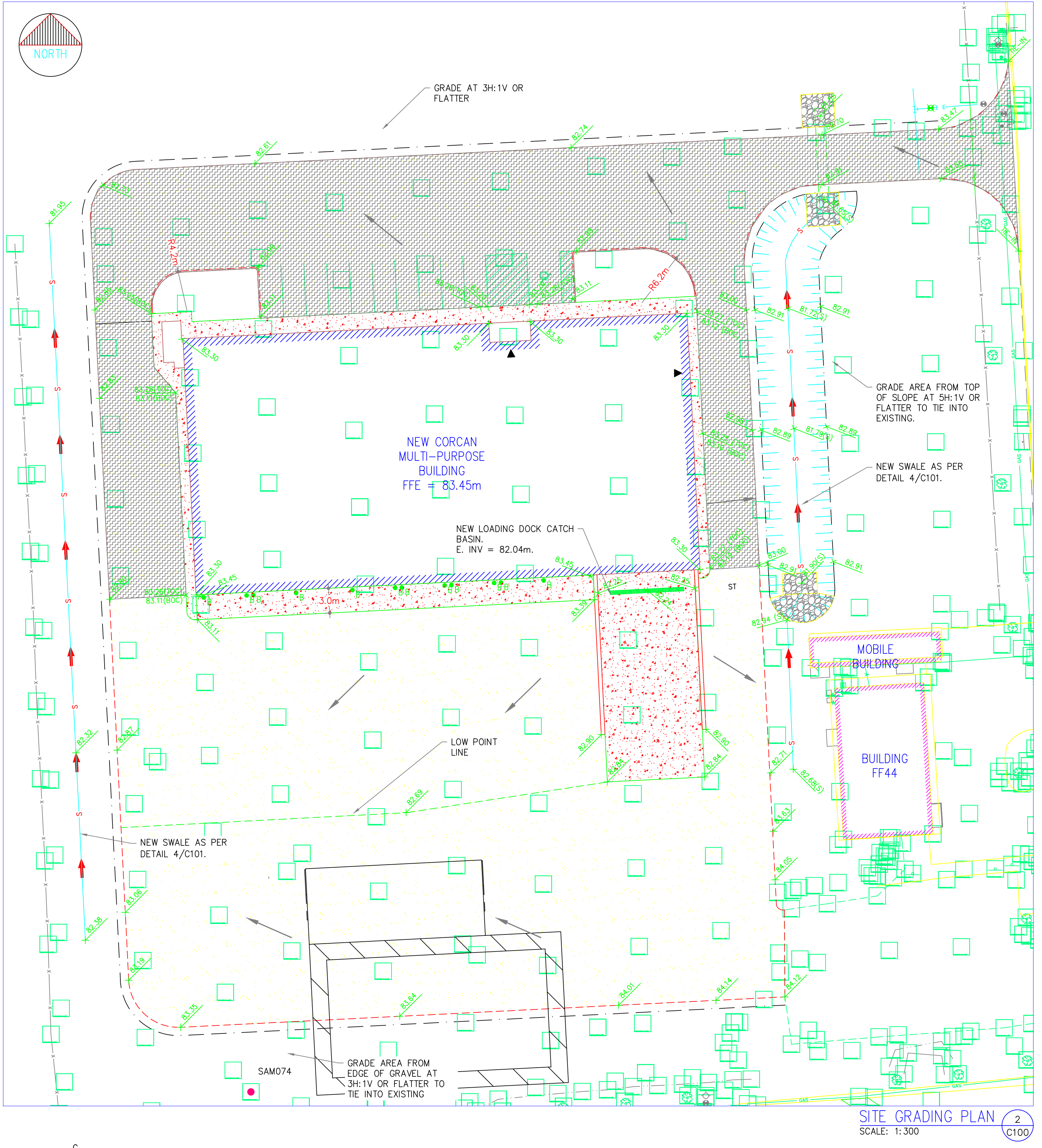
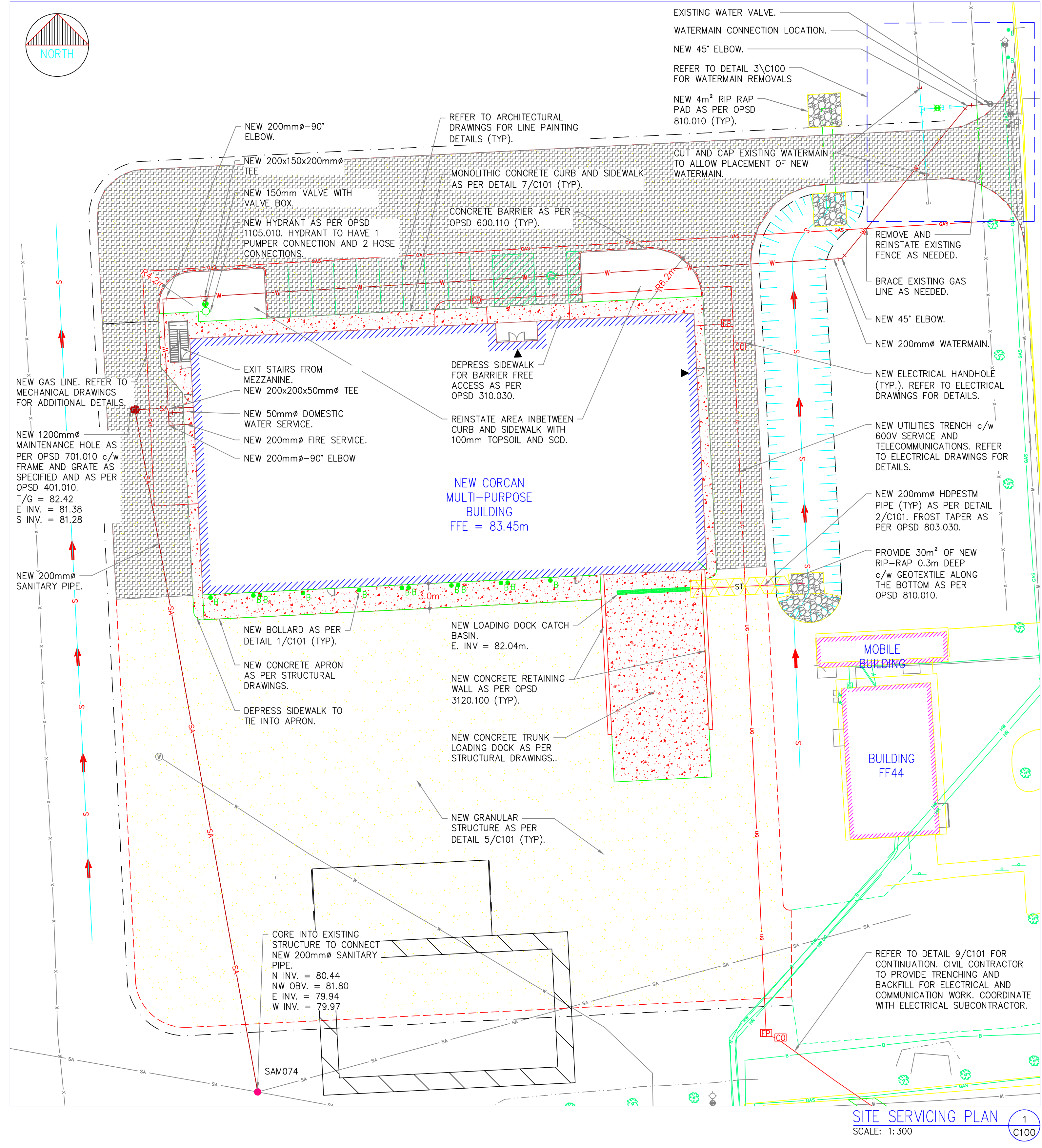
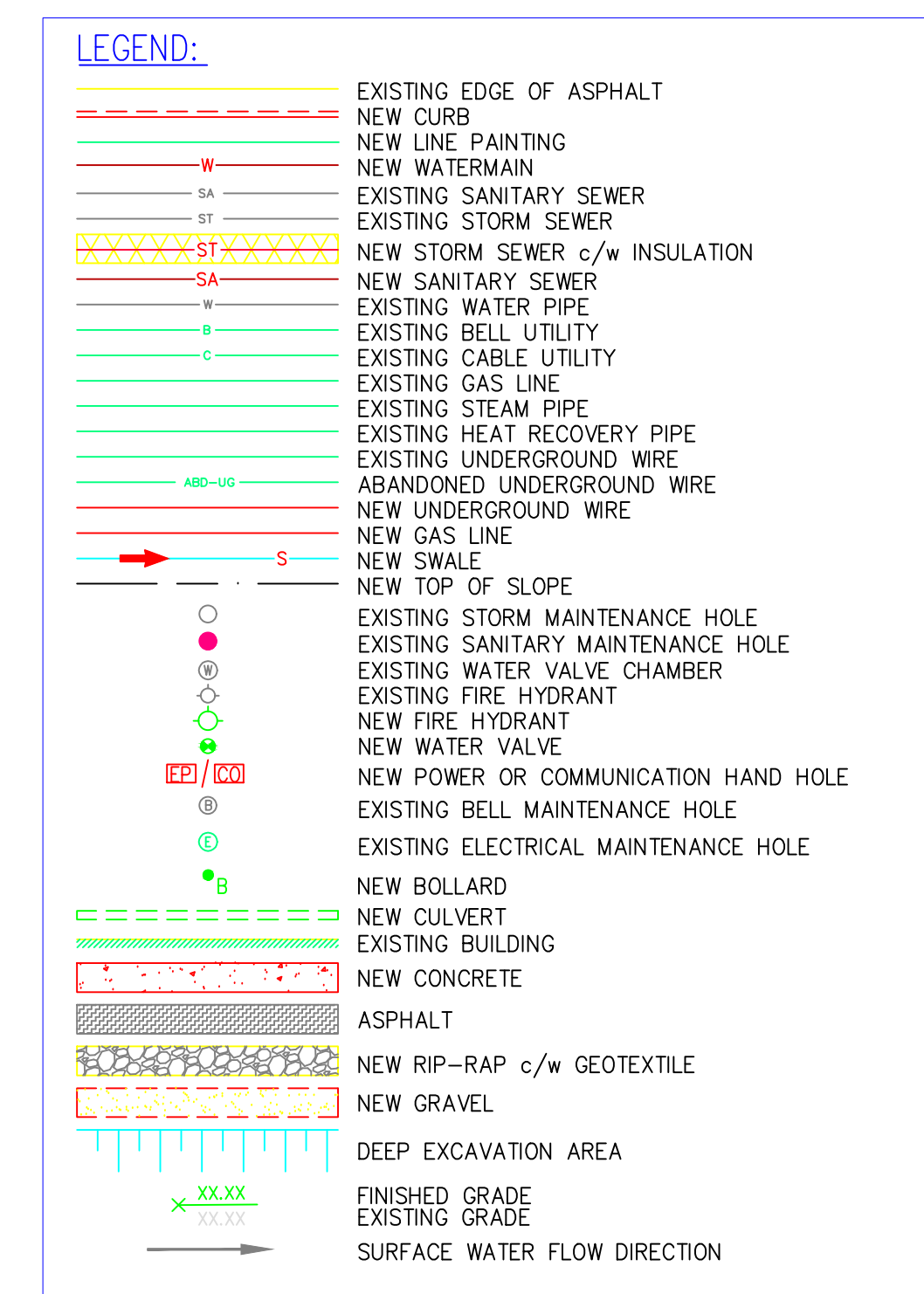
designed	NH	conçu
date	2014/08/11	(yyyy/mm/dd)
drawn	NH	dessiné
date	2014/08/11	(yyyy/mm/dd)
reviewed	KC	examiné
date	2015/03/12	(yyyy/mm/dd)
approved	MM	approuvé
date	2015/03/12	(yyyy/mm/dd)
Tender	DUNCAN PARKER	Submission
Project Manager	Administrateur de projets	
project no.	no. du projet	
	R.055776.001	
drawing no.	no. du dessin	

C102



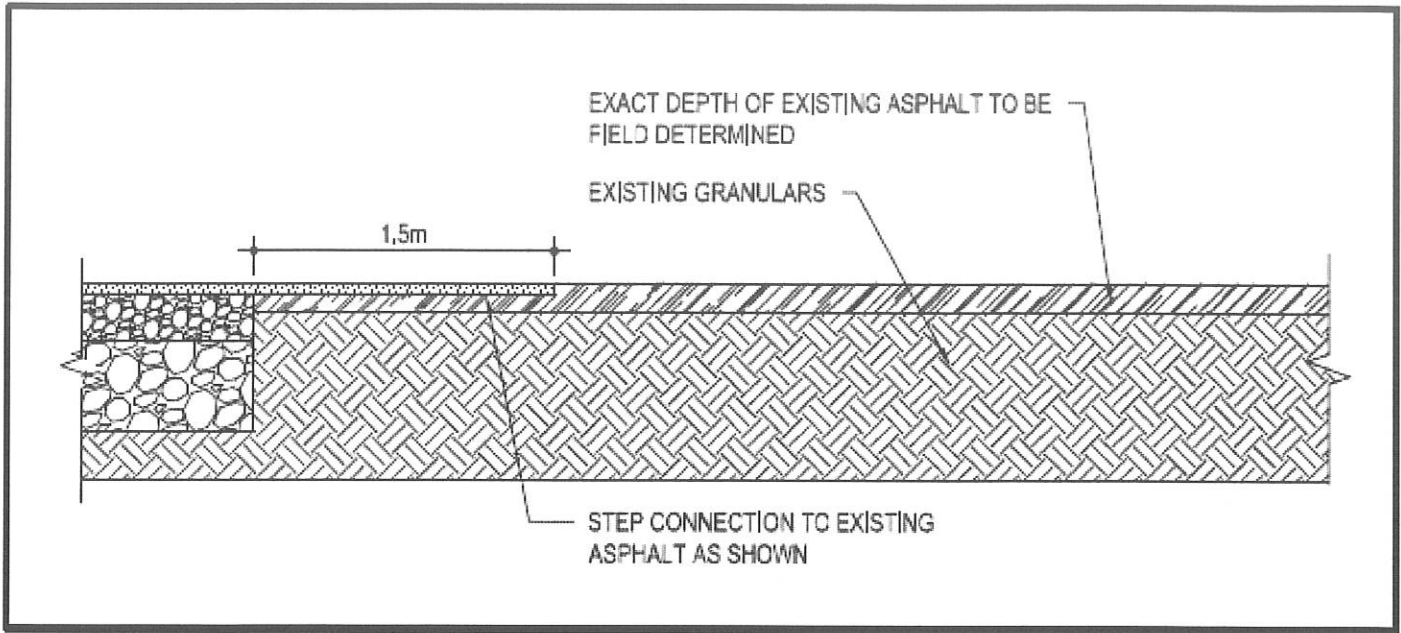
GENERAL NOTES:

- CONTRACTOR TO VERIFY LOCATION OF ALL BURIED SERVICES PRIOR TO START OF CONSTRUCTION.
- TOPOGRAPHIC INFORMATION PROVIDED BY RONALD H. SMITH LTD. (JULY 2012). REFER TO CONTROL POINT (00819730538) LOCATION SHOWN ON KEY PLAN, NORTHING=4899107.479, EASTING=375921.245, ELEVATION = 84.229m.
- GEOTECHNICAL INFORMATION PROVIDED BY DBA ENGINEERING LTD. (NOVEMBER 2012).
- EXISTING BUILDINGS AND TREES TO BE PROTECTED DURING CONSTRUCTION UNLESS INDICATED OTHERWISE.
- REINSTATE DISTURBED AREAS TO ORIGINAL CONDITION OR BETTER AND GRADE SURROUNDING AREAS AT 4H:1V FOR TIE-IN. COORDINATE WITH DEPARTMENT REPRESENTATIVE PRIOR TO COMMENCING RESTORATION.
- HEAVY DUTY SILT FENCE AS PER OPSD 219.130 TO BE INSTALLED DOWN STREAM OF CONSTRUCTION.
- (S) - SWALE GRADE; (TOC) - TOP OF CURB GRADE; (BOC) - BOTTOM OF CURB GRADE
- TEST EXCAVATIONS ARE TO BE COMPLETED AT ALL UTILITY TIE-INS AND UTILITY CROSSINGS. EXCAVATION IS TO BE COMPLETED AND ANY DISCREPANCIES OR CONFLICTS WITH THE INFORMATION PROVIDED IS TO BE SUBMITTED TO THE DEPARTMENTAL REPRESENTATIVE SEVEN (7) DAYS IN ADVANCE OF THE WORK.
- THE CONTRACTOR IS TO COORDINATE ALL TRENCHING ACTIVITIES WITH THE DEPARTMENTAL REPRESENTATIVE. THE LENGTH OF OPEN UTILITY TRENCHES SHALL BE LIMITED TO 5.0m AS OTHERWISE DIRECTED BY THE DEPARTMENTAL REPRESENTATIVE. TRENCHING SHALL START AT THE TIE IN OR THE NEW BUILDING.
- 1.8m HIGH RIGID FENCING TO BE PLACED AROUND THE ENTIRE PERIMETER OF ALL OPEN EXCAVATIONS.

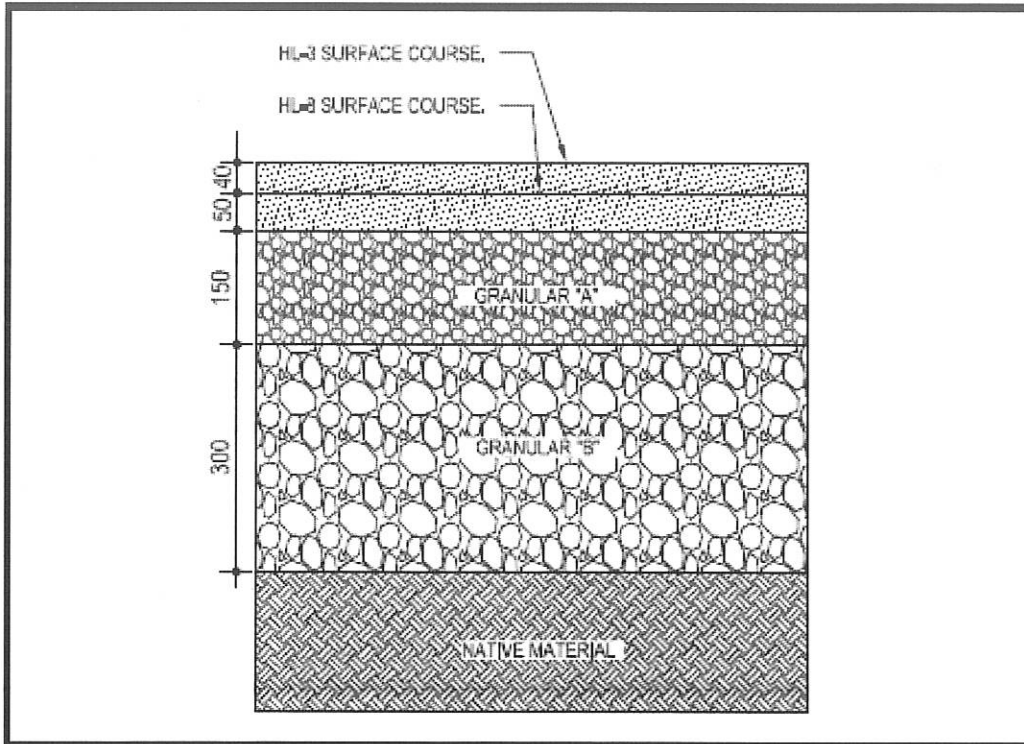


key plan		plan-dé	
01	ISSUED FOR TENDER	15/03/16	
revision	description	date	
A	A detail no. m ² du détail	A	
B	B location drawing no. sur dessin n ^o	B	
C	C drawing no. dessin n ^o	C	
project	CSC MULTI-PURPOSE BUILDING CBI MINIMUM INSTITUTION (FRONTENAC) KINGSTON, ONTARIO		
drawing	CIVIL SITE PLAN & GRADING		
designed	conçu		
date	(yyyy/mm/dd)		
drawn	dessiné		
date	(yyyy/mm/dd)		
reviewed	examiné		
date	(yyyy/mm/dd)		
approved	approuvé		
date	(yyyy/mm/dd)		
Tender	Soumission		
Project Manager	Administrateur de projets		
project no.	no. du projet		
drawing no.	no. du dessin		
C100			

02.02.2015



1 TYPICAL STEP CONNECTION DETAIL TO EXISTING ASPHALT
 C110 SCALE: N,T,S,



5 LIGHT DUTY ASPHALT STRUCTURE DETAIL
 C110 SCALE: N,T,S,