



Department of Public Works  
Ministère des Travaux publics

MARQUIS, VANDRY & ASS.  
CONSULTING ENGINEERS

RIMOUSKI: 471 CATHEDRAL AVE.  
QUEBEC: 880 STE-FOY ROAD.

A detail no. B location drawing no. C drawing no.  
D detail no. E location drawing no. F drawing no.

revisions



project title

HARBOUR DEVELOPMENT  
AMÉNAGEMENT PORTUAIRE  
"AS BUILT"

Cap-aux-Meules, I.M. P. Que.

drawing title

BEAMS - POUTRES

FISHERMEN'S WHARF  
QUAI DES PÊCHEURS

designed by

drawn by

checked by

approved by

date

Tender

D.P.W. Project Manager

Administrateur de projets M.T.P.

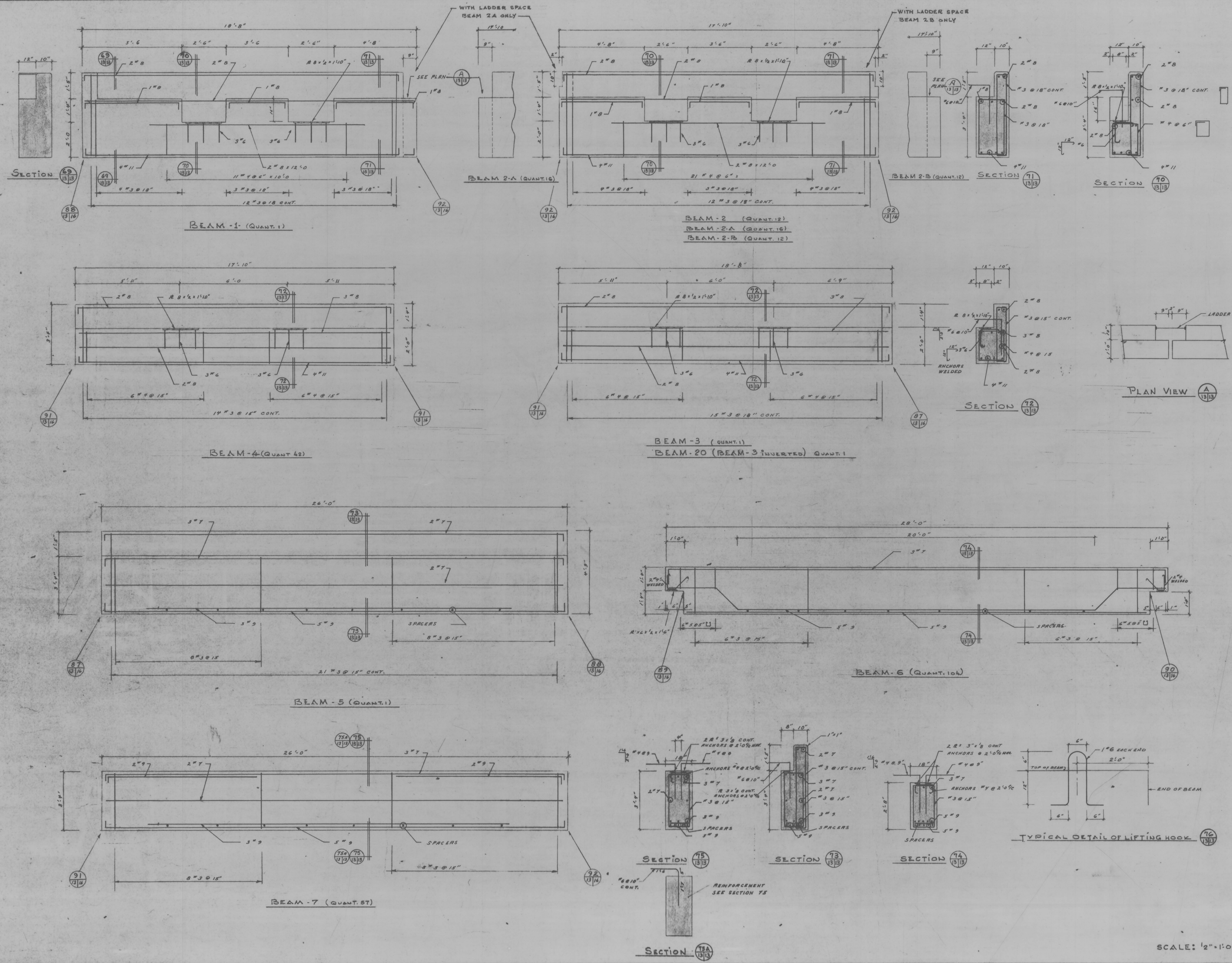
project number

C-34-17

drawing no.

13/24

M.T.P. 121-45-190R



SCALE: 1/2"=1'-0"

14042-D

DPW 700 F