

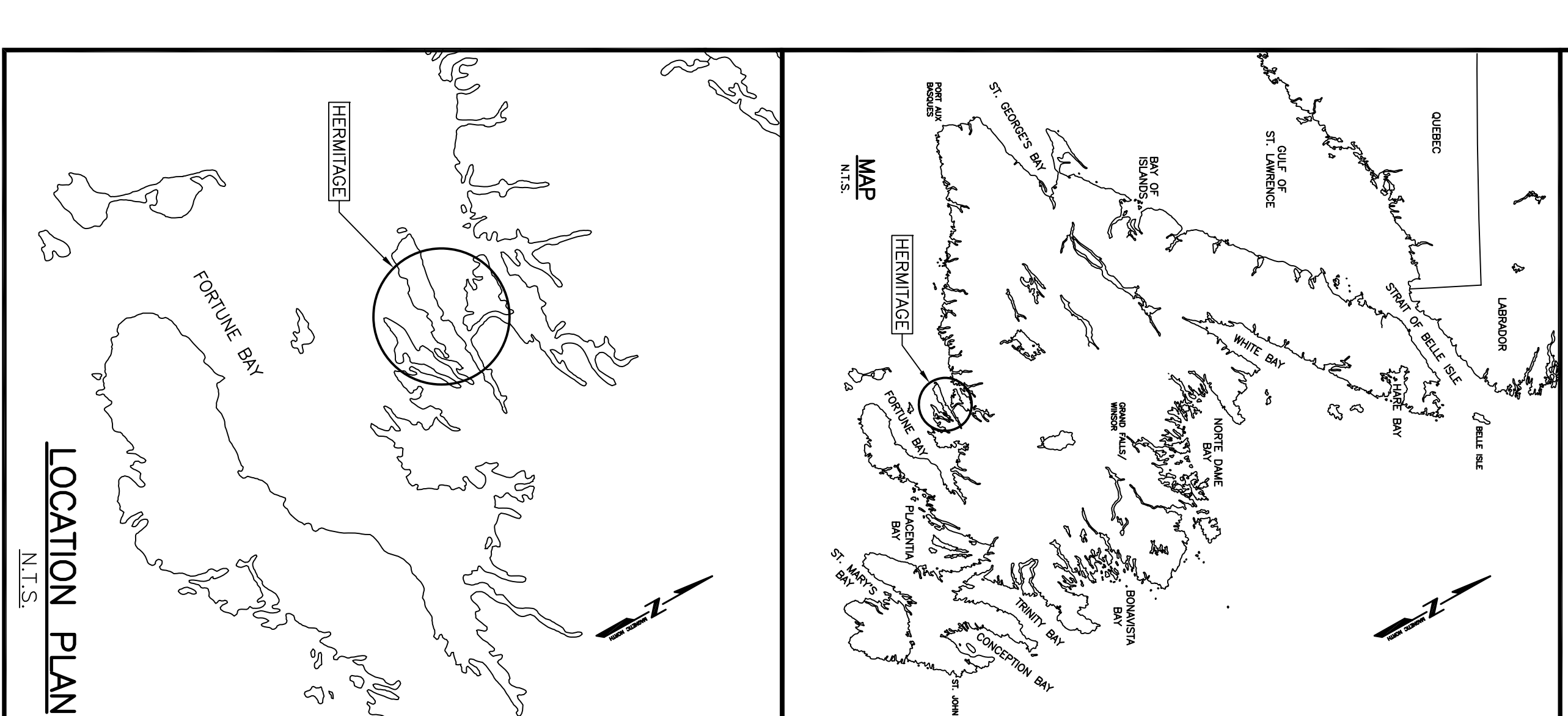
FISHERIES AND OCEANS
CANADA

SMALL CRAFT HARBOURS



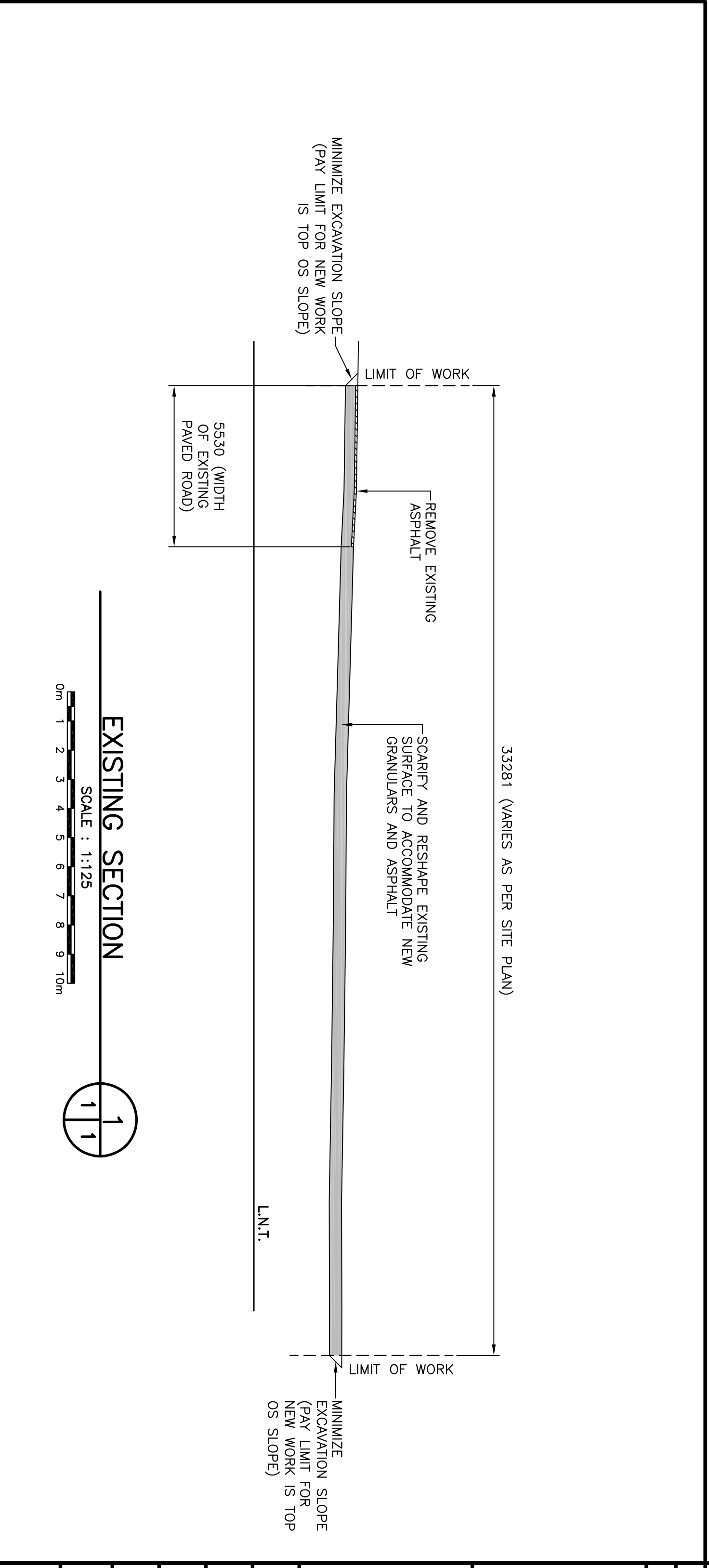
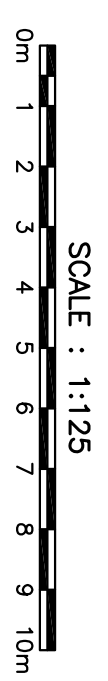
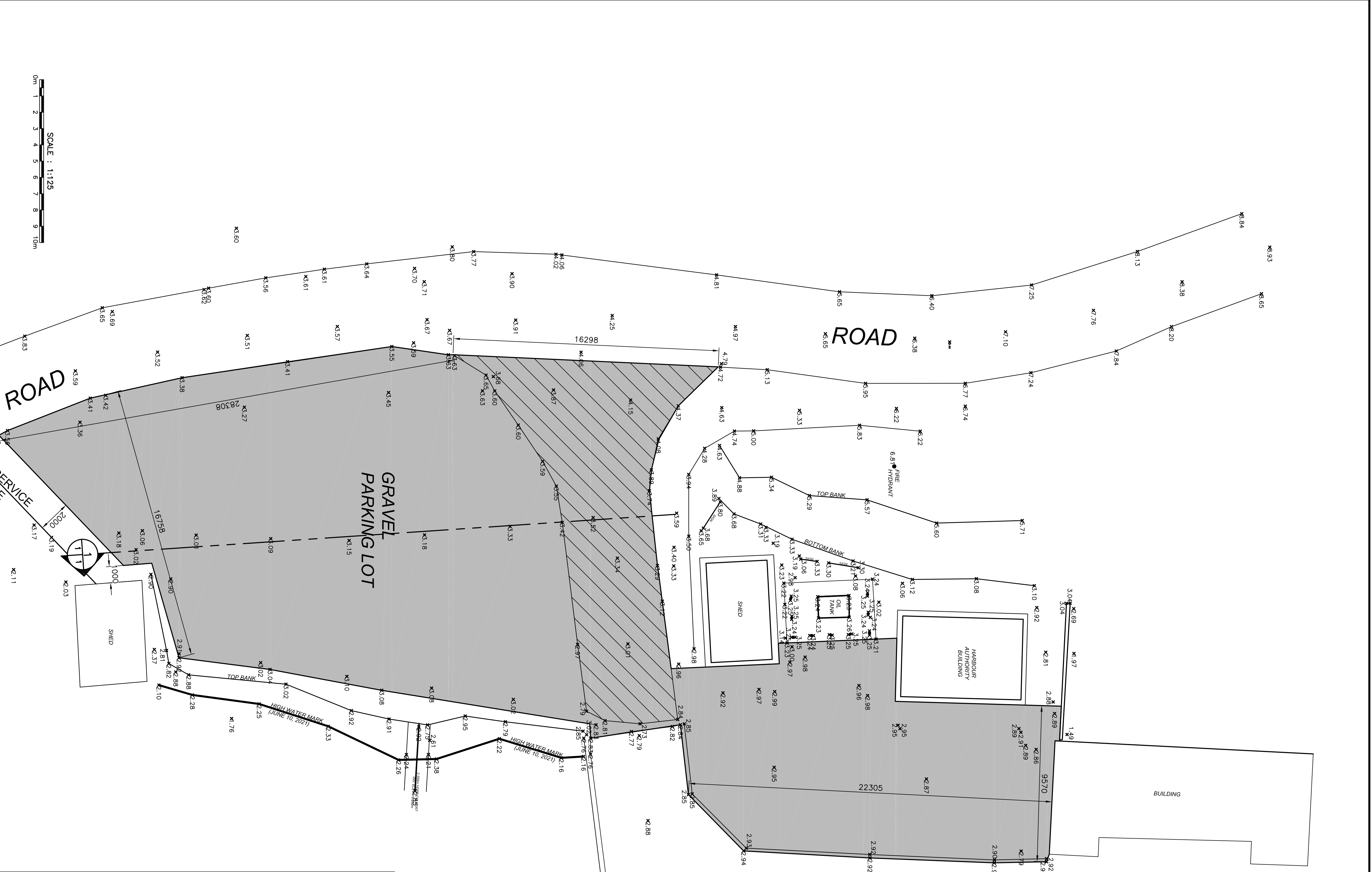
UPLAND IMPROVEMENTS (PAVING)
HERMITAGE
NEWFOUNDLAND AND LABRADOR

PROJECT No. C2-000088
ISSUED FOR TENDER



LIST OF DRAWINGS:

- C1 OF 3 EXISTING SITE PLAN
- C2 OF 3 NEW SITE PLAN
- C3 OF 3 SECTIONS

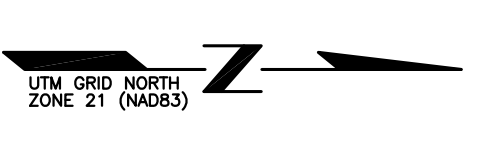


- LEGEND:**
- EXISTING ASPHALT TO BE REMOVED AND DISPOSED AT A PROVISIONALLY APPROVED WASTE DISPOSAL FACILITY
 - EXISTING GRANULARS TO BE SCAFFRIED AND RESHAPE IN PREPARATION FOR NEW GRANULARS AND ASPHALT

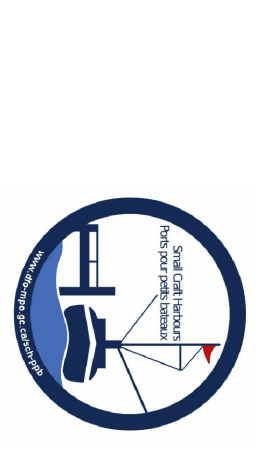
CONTROL POINTS:

PT. NAME	EASTING	NORTHING	CD ELEV.	DESCRIPTION
BM	9679092	580845597	5267564.184	CHS BRASS FLAQUE SET IN CONCRETE DECK

COORDINATES FOR HORIZONTAL CONTROL ARE GIVEN ON THE UTM MAPPING PLANE, ZONE 21, USING THE NORTH AMERICAN DATUM OF 1983(NAD83).



- NOTES:**
1. ALL ELEVATIONS ARE IN METRES UNLESS OTHERWISE NOTED.
 2. ALL DIMENSIONS ARE IN MILLIMETRES UNLESS OTHERWISE NOTED.



SMALL CRAFT HARBOURS
 Building and Ocean Canada at Ocean

PROVINCE OF NEWFOUNDLAND
PERMIT HOLDER
 This Permit Allows
 APN ENGINEERING INC.

REGISTERED PROFESSIONAL ENGINEER
 NIELL C. BIRD
 1700 WATERLOO ST. S.
 ST. JOHN'S, NL A1B 1L5
 709-733-1111
 2017-2021

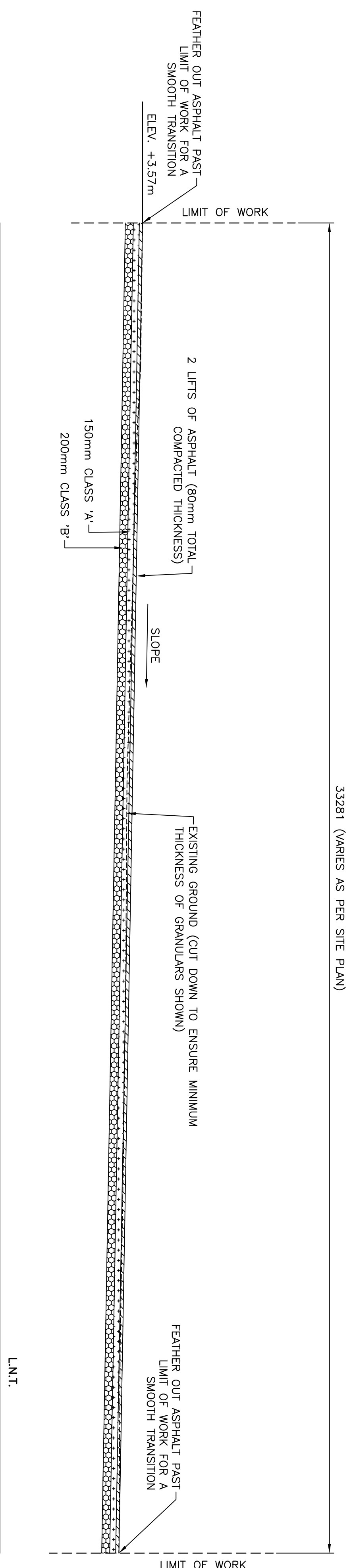
no.	revision	date	description
A	ISSUED FOR REVIEW	7/2/21	

UPLAND IMPROVEMENTS (PAVING)
HERITAGE, NL

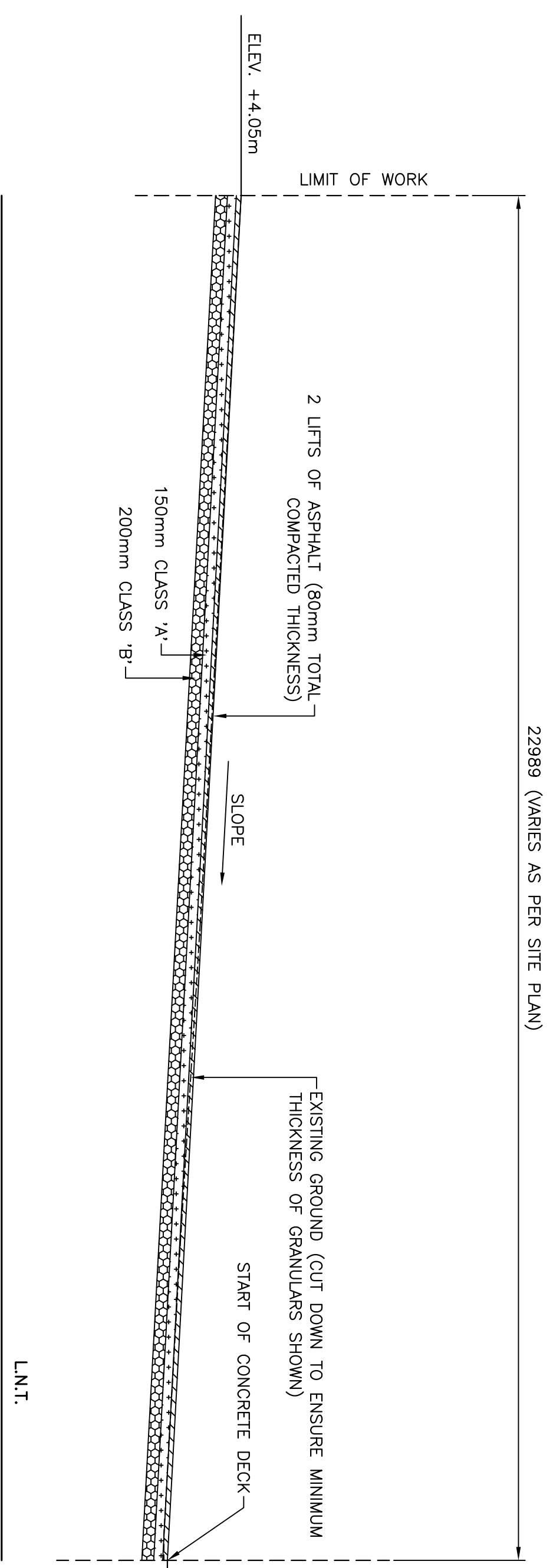
EXISTING SITE PLAN

designed N.H.
 date JULY 19, 2021
 drawn P.H.
 date JULY 19, 2021
 checked P.H.
 approved P.H.

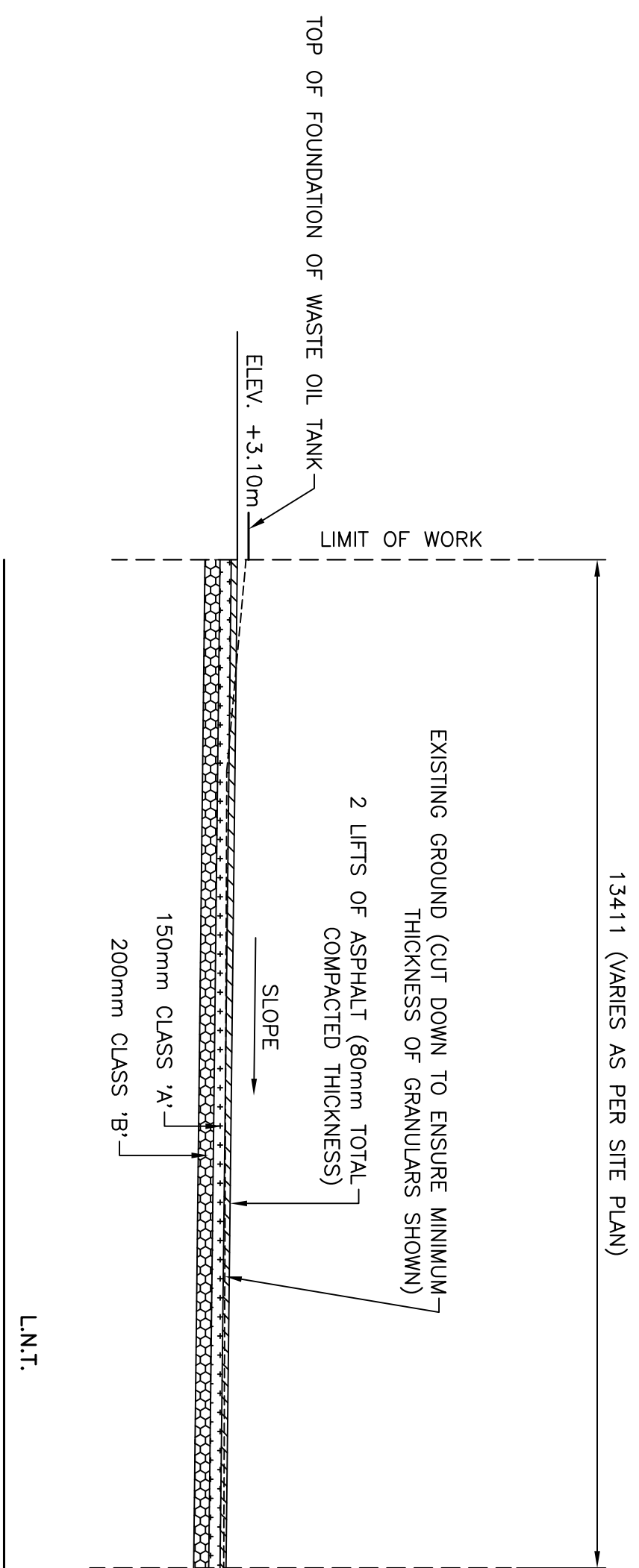
Project number: **C2-000088**
 no. of sheets: **C1**



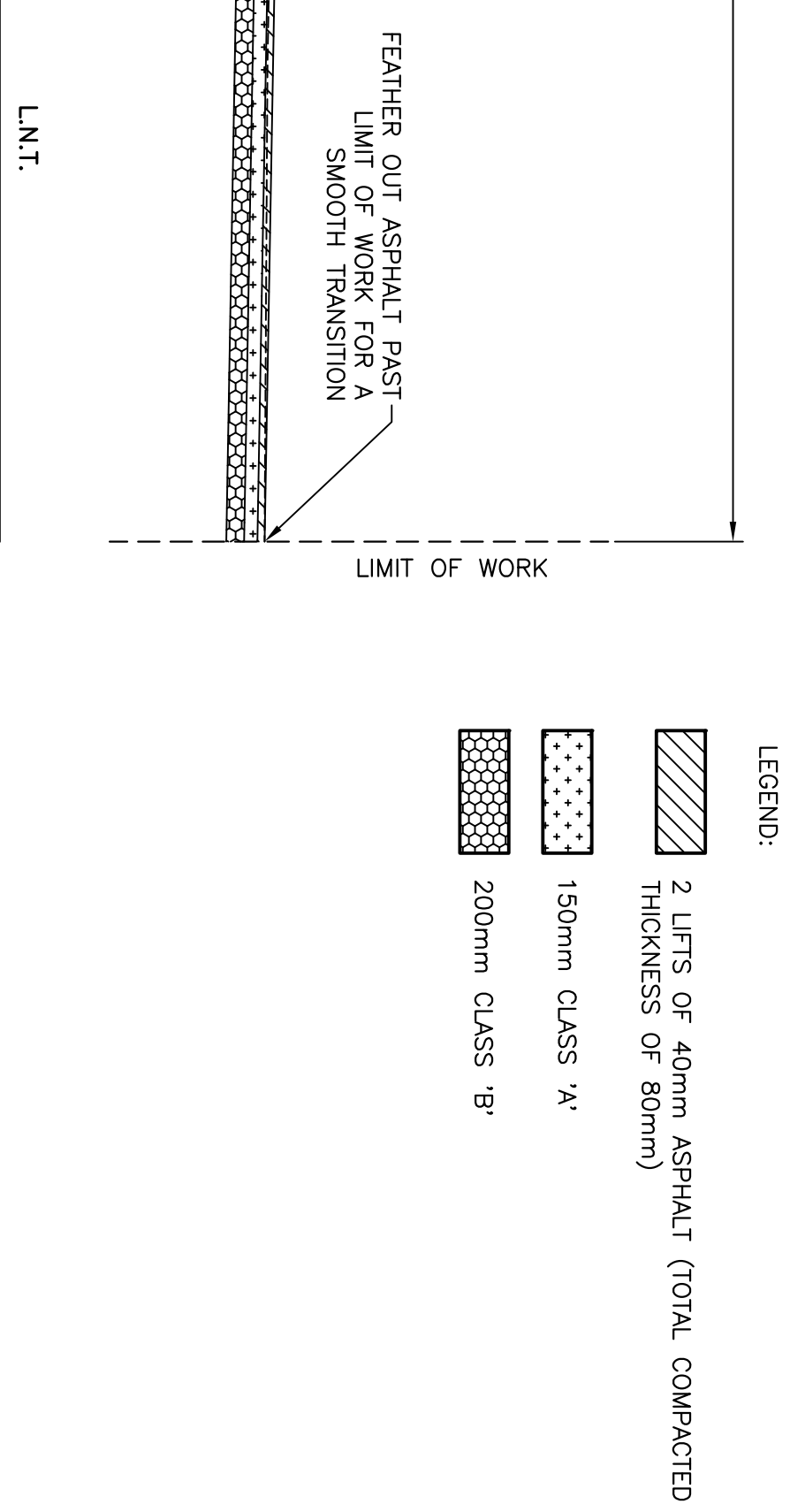
NEW SECTION
SCALE : 1:75
1
2
3



NEW SECTION
SCALE : 1:75
2
2
3



NEW SECTION
SCALE : 1:75
3
2
3



NEW SECTION
SCALE : 1:75
4
2
3

LEGEND:
 2 LIFTS OF 40mm ASPHALT (TOTAL COMPACTED THICKNESS OF 80mm)
 150mm CLASS 'A'
 200mm CLASS 'B'

LEGEND:
 2 LIFTS OF 40mm ASPHALT (TOTAL COMPACTED THICKNESS OF 80mm)
 150mm CLASS 'A'
 200mm CLASS 'B'

LEGEND:
 2 LIFTS OF 40mm ASPHALT (TOTAL COMPACTED THICKNESS OF 80mm)
 150mm CLASS 'A'
 200mm CLASS 'B'

Small Craft Harbours

1. ALL ELEVATIONS ARE IN METRES UNLESS OTHERWISE NOTED.
 2. ALL DIMENSIONS ARE IN MILLIMETRES UNLESS OTHERWISE NOTED.

PROVINCE OF NEWFOUNDLAND
 PERMIT HOLDER
 This Permit Allows
 APN ENGINEERING INC.

ISSUED FOR TENDER	7/19/21
ISSUED FOR REVIEW	7/9/21
revision	date
project	project
UPLAND IMPROVEMENTS (PAVING) HERMITAGE, NL	

SECTIONS

designed N.H.	scale
date JULY 19, 2021	
drawn P.H.	drawn
date JULY 19, 2021	approved
approved	
under <i>Paul Curran</i> Sponsor	
DPO Project Manager	
project number C2-000088	no. du projet
drawing no. C3	no. du dessin