



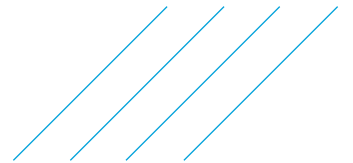
DND RP-14 Remediation Project

Solicitation: EZ897-220112/A

Mandatory Proponents Conference

PSPC: Robert Thomas

SNC-Lavalin: Ian Mace



Outline

- › Site Location
- › Site Preparation
- › Excavation Areas
- › Site Restoration



Site Prep / Access Considerations

Site Location – CFAD Rocky Point:

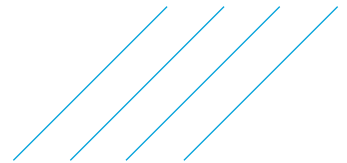
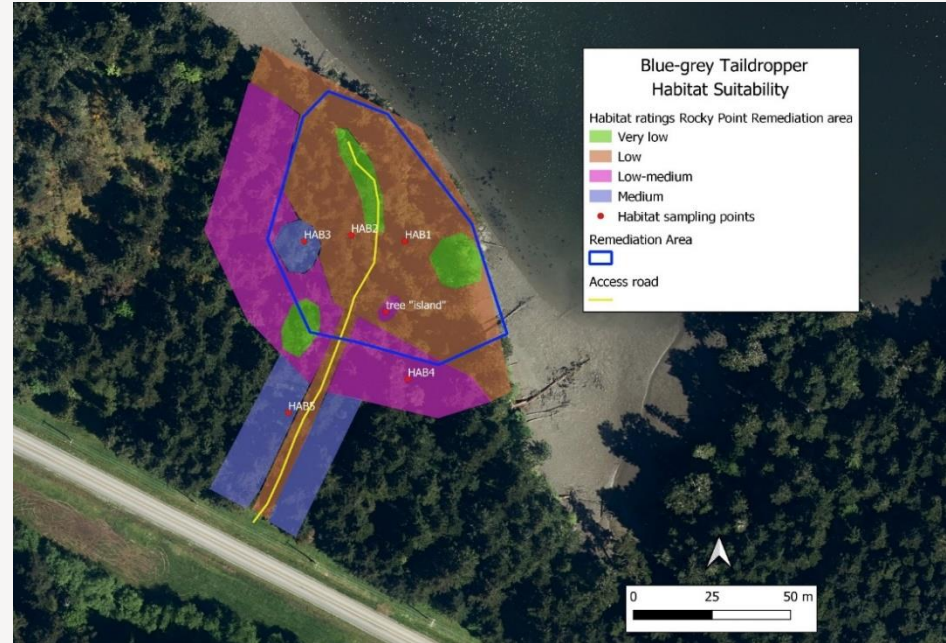
- › Approximately 600 m from turn at Rocky Point Rd and East Sooke Rd.
- › Site is located on the left side of the road and accessed through an old overgrown side road.
- › A grassy boulevard and small ditch are present.
- › One small culvert can be found allowing small vehicle passage over the ditch.



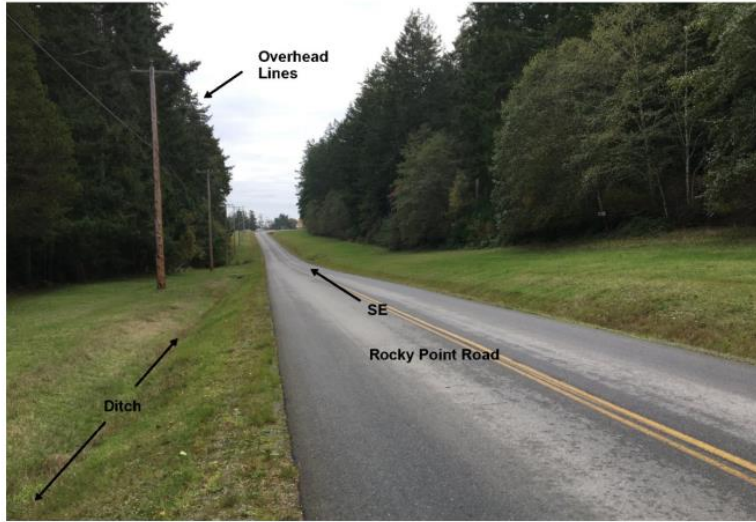
Site Disturbance - Slugs

Blue-Grey Taildropper Slugs:

- › Do not disturb any areas of Medium habitat quality areas (See Figure 1, EED).



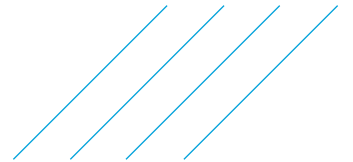
Site Prep / Access Considerations



Photograph 1: Rocky Point Road adjacent to access road entrance, looking southeast.



Photograph 2: Entrance to Site access road off Rocky Point Road, looking northeast.



Site Prep / Access Considerations

Access Considerations:

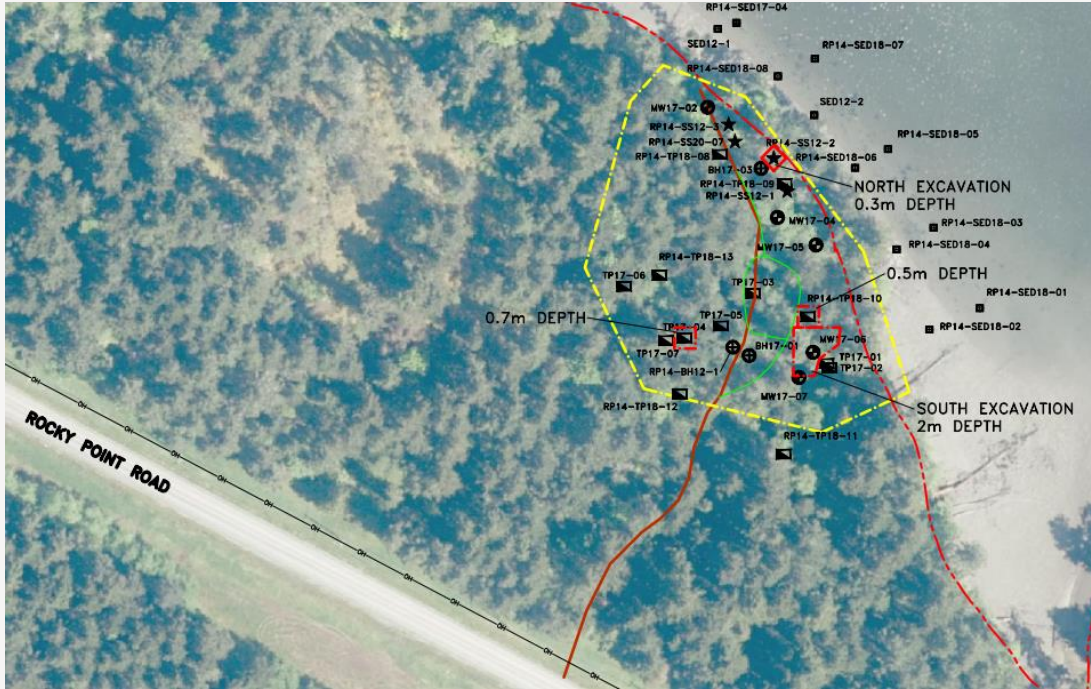
- › Tight left turn.
- › Ditch crossing.
- › Laydown / Contractor space.
- › Narrow access road for equipment – approximately 3 m wide.
- › Minimize tree removal as much as possible.
 - › Minimum of nine trees to be removed from within south excavation area and access areas.
 - › Other tree removal may be necessary.
- › Truck and equipment turn-around points.



Photograph 3: Access road, looking northeast from entrance.



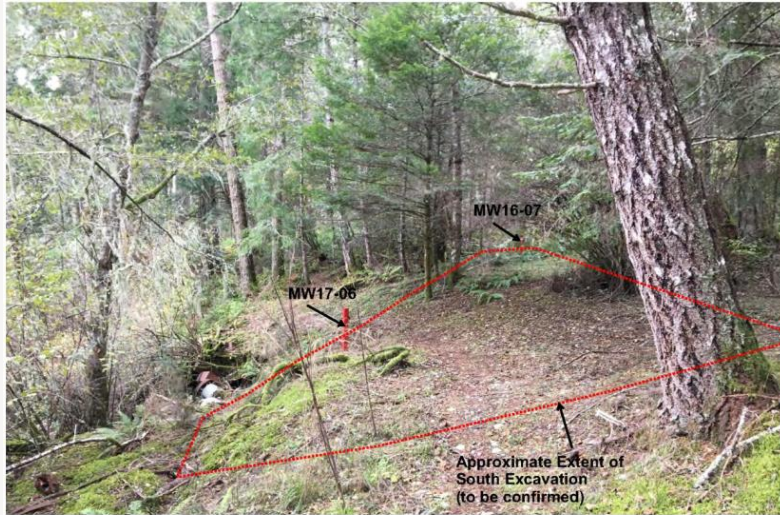
Overview of Excavation Areas



- 4 small excavations
- 0.5 m to 2 m depth



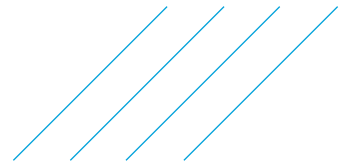
Overview of Excavation Areas – South Area



Photograph 9: South excavation area, looking south (excavation extent to be confirmed by contractor prior to start of work).



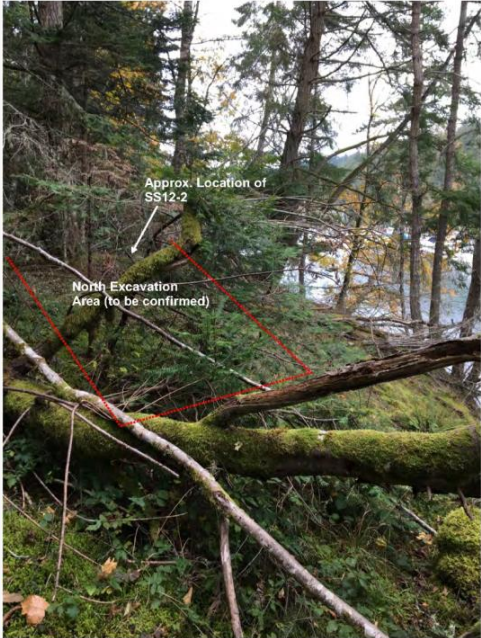
Photograph 5: South excavation area, looking south, showing accessibility on west side (excavation extent to be confirmed by contractor prior to start of work).



Overview of Excavation Areas – North Area



Photograph 13: North excavation area, looking north-northeast toward bay (excavation extent to be confirmed by contractor prior to start of work).



Excavation, Disposal, and Backfill

Excavation and Disposal Estimates:

- › 310 m³ of soil excavation from the excavation areas.
- › 470 tonnes of Hazardous Waste (lead) for transport and off-site disposal.
- › 210 tonnes of Waste (IL+) for transport and off-site disposal.

Backfill Estimates:

- › 484 tonnes imported granular aggregate backfill to within 0.3 m of surface grade.
- › 136 tonnes of topsoil to surface.

Confirmatory Sampling:

- › Results required prior to backfilling.
- › Results expected within four to five business days of collection.



Debris Removal

Remove Surface Metal Debris:

- › 190 tonnes non-contaminated material removal.
- › Along slope towards Pedder Bay.
- › UXO guidance was provided in Annex F.



Photograph 6: Metal debris adjacent Pedder Bay at edge of south excavation area.



Site Restoration and Environmental Effects Determination

Restoration and Mitigations:

- › Place topsoil and complete seeding and tree planting as per the EED (Annex D).
- › Avoid removal of mature trees wherever possible. Any tree > 25 cm diameter will be documented in a Tree Replacement Program in compliance with MARPAC FSE. Replaced by two trees of same species planted in same general location.
- › Apply leaf litter and mulch and coarse woody debris over restoration area.
- › Remove invasive plants.
- › Do not conduct unnecessary removal or disturbance of logs, stumps or decaying large woody debris.
- › QEP to conduct a bird nest survey within 7 days prior to any vegetation removal.
- › Implement erosion and sediment control measures along the boundary between work area and Pedder Bay.



*Our values are the essence of our company's identity.
They represent how we act, speak and behave together,
and how we engage with our clients and stakeholders.*

S~~A~~*F*~~E~~*T*~~Y~~

We put safety at the heart of everything we do, to safeguard people, assets and the environment.

I~~N*T*~~E*G*~~R*I*~~T*Y*~~~~~~~~

We do the right thing, no matter what, and are accountable for our actions.

C~~O~~*L*~~L~~*A*~~B~~*O*R*~~A~~*T*~~I~~*O*~~N~~*

We work together and embrace each other's unique contribution to deliver amazing results for all.

I~~N*N*~~O~~*V*~~A~~*T*~~I~~*O*~~N~~~~

We redefine engineering by thinking boldly, proudly and differently.

