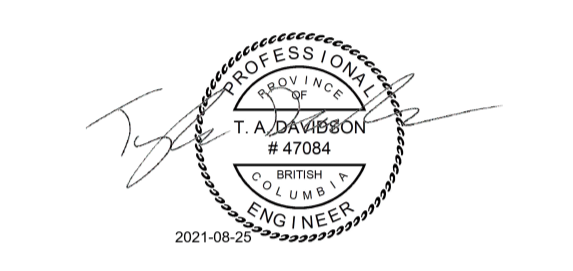


PROJECT NORTH TRUE NORTH



WSP PROJECT NUMBER: 201-09709-00  
301-3620 Uptown Blvd Victoria BC 250-384-5510 WWW.WSP.COM



Revision Number	Description/Description	Date/Date
4	RE-ISSUED FOR TENDER	2021.08.25
3	ISSUED FOR TENDER	2021.01.28
2	ISSUED FOR 100% CLIENT REVIEW	2021.01.18
1	ISSUED FOR 75% CLIENT REVIEW	2020.12.18

FISHERIES AND OCEANS, REAL PROPERTY, SAFETY AND SECURITY

VANCOUVER, BC 200-401 BURRARD ST.

Project title/Titre du projet

KITSILANO CCG SAR - WORKSHOP RECONSTRUCTION

Consultant Signature Box Only

Designed by/Concept par TD/SA Approved by/Approuvée par TD

Drawn by/Dessiné par SA/HW

PWGSC Project Manager/Administrateur de Projets TPSGC

PWGSC, Regional Manager, Architectural and Engineering Services/ Gestionnaire régionale, Services d'architectural et de génie, TPSGC

Drawing title/Titre du dessin

ELECTRICAL SITE PLAN, LEGEND, DRAWING LIST AND GENERAL NOTES

Project No./No. du projet: F521A-210639 Sheet/Feuille: E-001 Revision no./Loi Revision no.: 4

ANNOTATIONS

DENOTE	DESCRIPTION	DENOTE	DESCRIPTION
BND	BOND WIRE (AS PER SPECIFICATIONS)	F/A	FIRE ALARM
GND	GROUND WIRE (#6)	GFI	GROUND FAULT INTERRUPTOR
C/W	COMPLETE WITH	AFG	ABOVE FINISHED GRADE
DISC	DISCONNECT	WP	WEATHERPROOF

LIGHTING SYMBOLS

SYMBOL	DESCRIPTION
[Symbol]	2'x4' (610x1220mm) SURFACE LUMINAIRE. LETTER "B" INDICATES TYPE AS PER LUMINAIRE SCHEDULE.
[Symbol]	SURFACE LUMINAIRE. LETTER "B" INDICATES TYPE AS PER LUMINAIRE SCHEDULE.
[Symbol]	WALL MOUNTED LUMINAIRE
[Symbol]	WALL MOUNTED WEATHERPROOF PHOTOCELL
[Symbol]	EMERGENCY BATTERY PACK WITH REMOTE DUAL HEADS. REFER TO SPECIFICATIONS FOR DETAILS.
[Symbol]	REMOTE DUAL HEAD EMERGENCY LIGHTS CONNECTED TO EMERGENCY BATTERY PACK WALL MOUNTED. REFER TO SPECIFICATIONS FOR DETAILS.
[Symbol]	ONE LINE VOLTAGE TOGGLE SWITCH AND LOW VOLTAGE SWITCH MOUNTED 4'-0" (1.2m) ABOVE FINISHED FLOOR LEVEL. UNLESS OTHERWISE NOTED. "3" WHERE SHOWN, DENOTES 3-WAY SWITCH "D" WHERE SHOWN, DENOTES DIMMER SWITCH
[Symbol]	OCCUPANCY SENSOR - CEILING MOUNTED
[Symbol]	DAYLIGHT SENSOR - CEILING MOUNTED
[Symbol]	EXIT SIGN-WALL MOUNTED, ARROW INDICATES DIRECTION OF EXIT PATH. "WP" DENOTES WEATHERPOOF TYPE
[Symbol]	TIMER SWITCH

POWER AND COMMUNICATION SYMBOLS

SYMBOL	DESCRIPTION
[Symbol]	DUPLEX U-GROUND 15A, 125 VOLT, 2 POLE, 3 WIRE GROUNDING RECEPTACLE
[Symbol]	*** WHERE SHOWN, DENOTES CONNECTION TO EMERGENCY POWER "WP" WHERE SHOWN, DENOTES DEVICE MOUNTED IN WEATHERPROOF F.S. BOX WITH WEATHERPROOF COVER "GFI" WHERE SHOWN, DENOTES GROUND FAULT INTERRUPTER TYPE DUPLEX RECEPTACLE
[Symbol]	"TL" WHERE SHOWN, DENOTES TWISTLOCK "UW" WHERE SHOWN, DENOTES UNDER THE WINDOW MOUNTED "OC" WHERE SHOWN, DENOTES OVER THE COUNTER MOUNTED "UC" WHERE SHOWN, DENOTES UNDER THE COUNTER MOUNTED
[Symbol]	SIMILAR TO ABOVE, BUT MOUNTED APPROXIMATELY 3'-6" (1050 mm) ABOVE FINISHED FLOOR LEVEL OR ABOVE COUNTER, UNLESS OTHERWISE NOTED.
[Symbol]	DUPLEX U-GROUND 15A, 125V, 2P 3 WIRE GROUNDING RECEPTACLE PROTECTED BY G.F.C.I. BREAKER AT PANELBOARD, MOUNTED APPROXIMATELY 3'6" (1050 mm) ABOVE FINISHED FLOOR.
[Symbol]	SPECIAL PURPOSE RECEPTACLE AS DENOTED
[Symbol]	SINGLE SURFACE MOUNTED / FLUSH MOUNTED PANELBOARD, "PP" DENOTES POWER PANEL.
[Symbol]	COMMUNICATION OUTLET (IF MULTIPLE DROPS ARE REQUIRED ADD TEXT)
[Symbol]	TRANSFORMER
[Symbol]	POWER TRANSFORMER.
[Symbol]	MOLDED CASE CIRCUIT BREAKER.
[Symbol]	DELTA GROUND CONNECTION
[Symbol]	WYE GROUND CONNECTION
[Symbol]	PANELBOARD
[Symbol]	PANELBOARD AND BREAKER
[Symbol]	GROUND ROD
[Symbol]	ELECTRIC BASEBOARD HEATER
[Symbol]	FORCE FLOW HEATER
[Symbol]	PULL BOX (FIBRE GLASS, PVC, ETC.)
[Symbol]	MOTOR
[Symbol]	DISCONNECT SWITCH (UNLESS NOTED OTHERWISE)

ACCESS CONTROL SYMBOLS

SYMBOL	DESCRIPTION
[Symbol]	SECURITY SYSTEM CARD READER OUTLET
[Symbol]	POWER CONNECTION TO DOOR HOLDER
[Symbol]	SECURITY SYSTEM MOTION DETECTOR
[Symbol]	POWER CONNECTION TO ELECTRIC STRIKE
[Symbol]	SECURITY SYSTEM DISARMING KEYPAD
[Symbol]	SECURITY PANEL

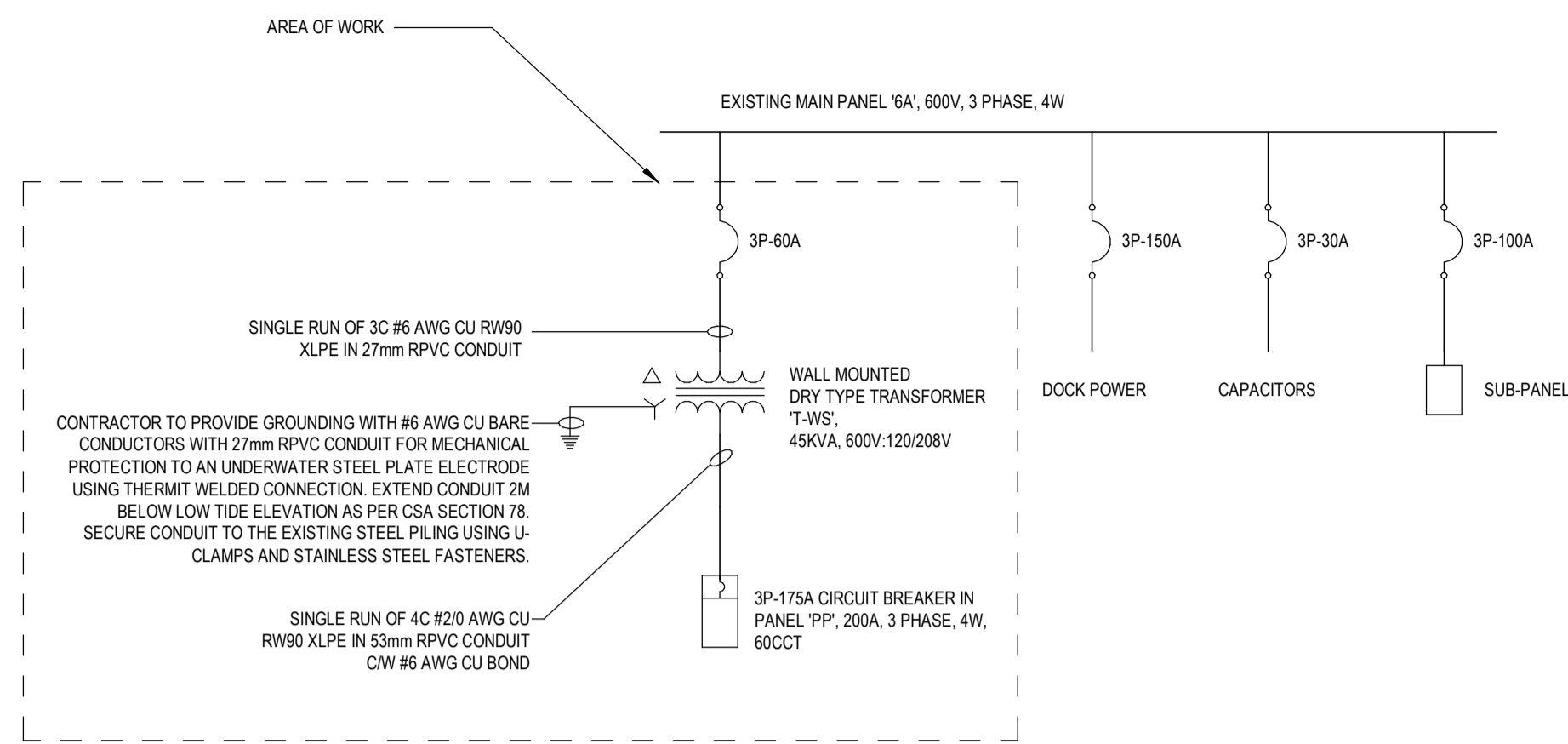
FIRE ALARM SYMBOLS

SYMBOL	DESCRIPTION
[Symbol]	SPRINKLER FLOW SWITCH
[Symbol]	SPRINKLER TAMPER SWITCH
[Symbol]	FIRE ALARM HORN
[Symbol]	FIRE ALARM MONITORING MODULE
[Symbol]	END OF LINE RESISTOR
[Symbol]	FIRE ALARM PULL STATION MOUNTED 1100mm ABOVE FINISHED FLOOR LEVEL UNLESS OTHERWISE NOTED. "CG" WHERE SHOWN, DENOTES DEVICE c/w CLEAR GUARD.

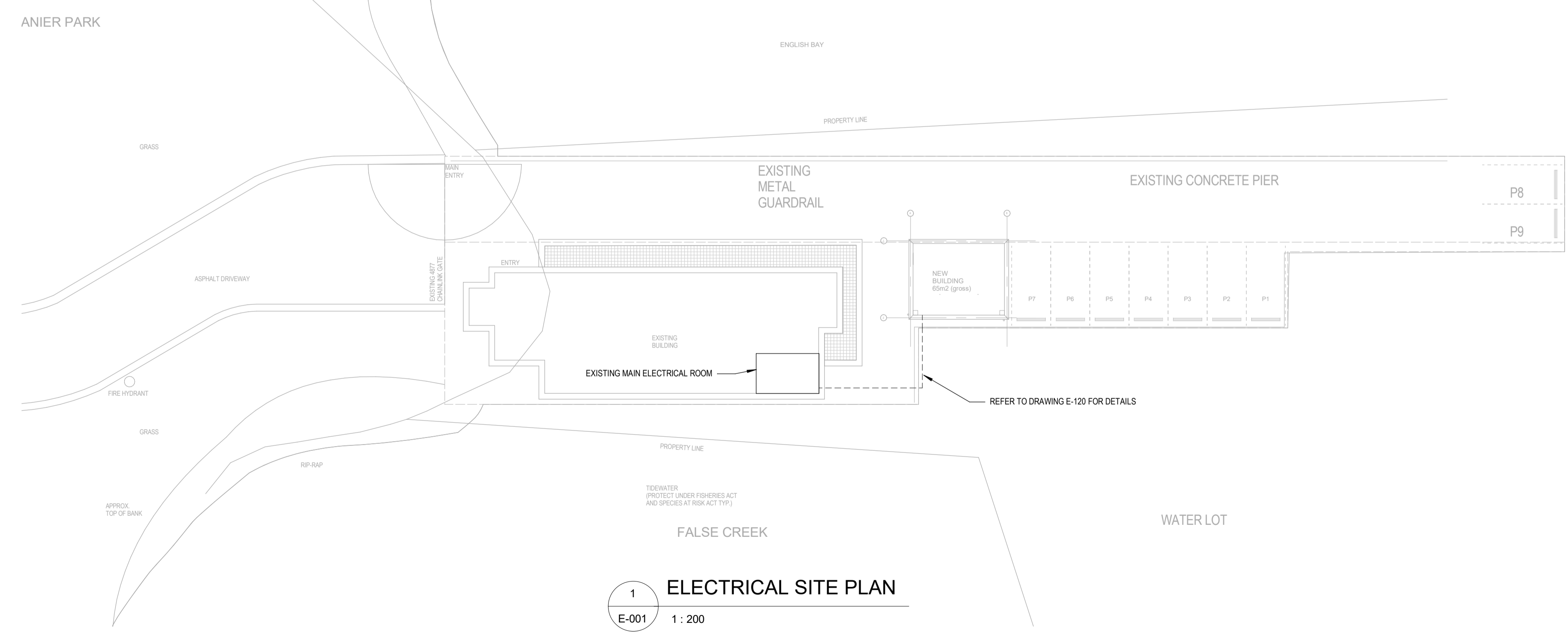
GENERAL NOTES:  
1. CONTRACTOR TO PROVIDE THE APPROPRIATE PERSONAL PROTECTIVE EQUIPMENT (PPE) AND OBTAIN AUTHORIZATION FROM THE AUTHORITY HAVING JURISDICTION (AHJ) PRIOR TO COMMENCING WORK. COORDINATE ON SITE WITH DCC REPRESENTATIVE. PROVIDE A SHUTDOWN SCHEDULE TO DCC REPRESENTATIVE THAT IDENTIFIES THE TIMING, PHASING AND COORDINATION OF ALL WORK REQUIRED TO DECOMMISSION OR TEMPORARY RELOCATE THE EXISTING ELECTRICAL DISTRIBUTION. REPLACE WITH NEW ELECTRICAL DISTRIBUTION AND MODIFICATIONS TO EXISTING DISTRIBUTION AND COMMISSION.  
2. EXISTING INFORMATION WITHIN THESE DRAWINGS ARE BASED ON INFORMATION PROVIDED BY OTHERS, EXTRACTED FROM HISTORICAL RECORDS, AND SITE OBSERVATION. EXISTING INFORMATION IS PROVIDED TO FACILITATE THE CONTRACTOR IN PROVIDING A FAIR AND ACCURATE TENDER BID, BY PROVIDING A GREATER UNDERSTANDING OF THE SCOPE OF WORK. BY NO MEANS SHALL THE CONTRACTOR RELY SOLELY ON THE EXISTING INFORMATION PROVIDED TO DETERMINE A COMPLETE AND FULLY ACCURATE SCOPE OF WORK AS NOT ALL ELECTRICAL EQUIPMENT OR DEVICES OR ASSOCIATED THAT REQUIRE TO BE RELOCATED, REMOVED OR REPLACED MAY BE NOTED, WE RECOMMEND CONTRACTOR TO PERFORM A SITE VISIT TO DETERMINE THE EXACT SCOPE OF WORK PRIOR TO PROVIDING THEIR TENDER BID.

ELECTRICAL DRAWING LIST

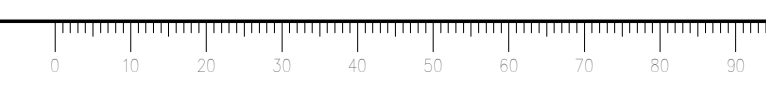
DRAWING #	DRAWING NAME
E-001	ELECTRICAL SITE PLAN, LEGEND, DRAWING LIST AND GENERAL NOTES
E-110	ELECTRICAL LIGHTING PLAN
E-120	POWER AND SYSTEMS PLAN
E-130	ELECTRICAL ELEVATION
E-140	ELECTRICAL DETAILS

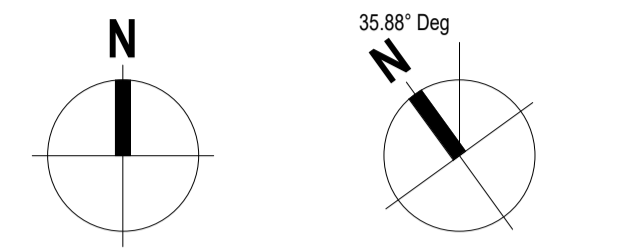


2 SINGLE LINE DIAGRAM E-001 1:1



1 ELECTRICAL SITE PLAN E-001 1:200

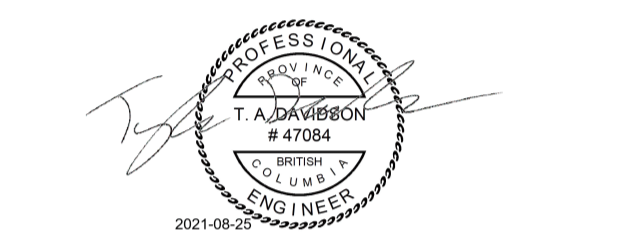




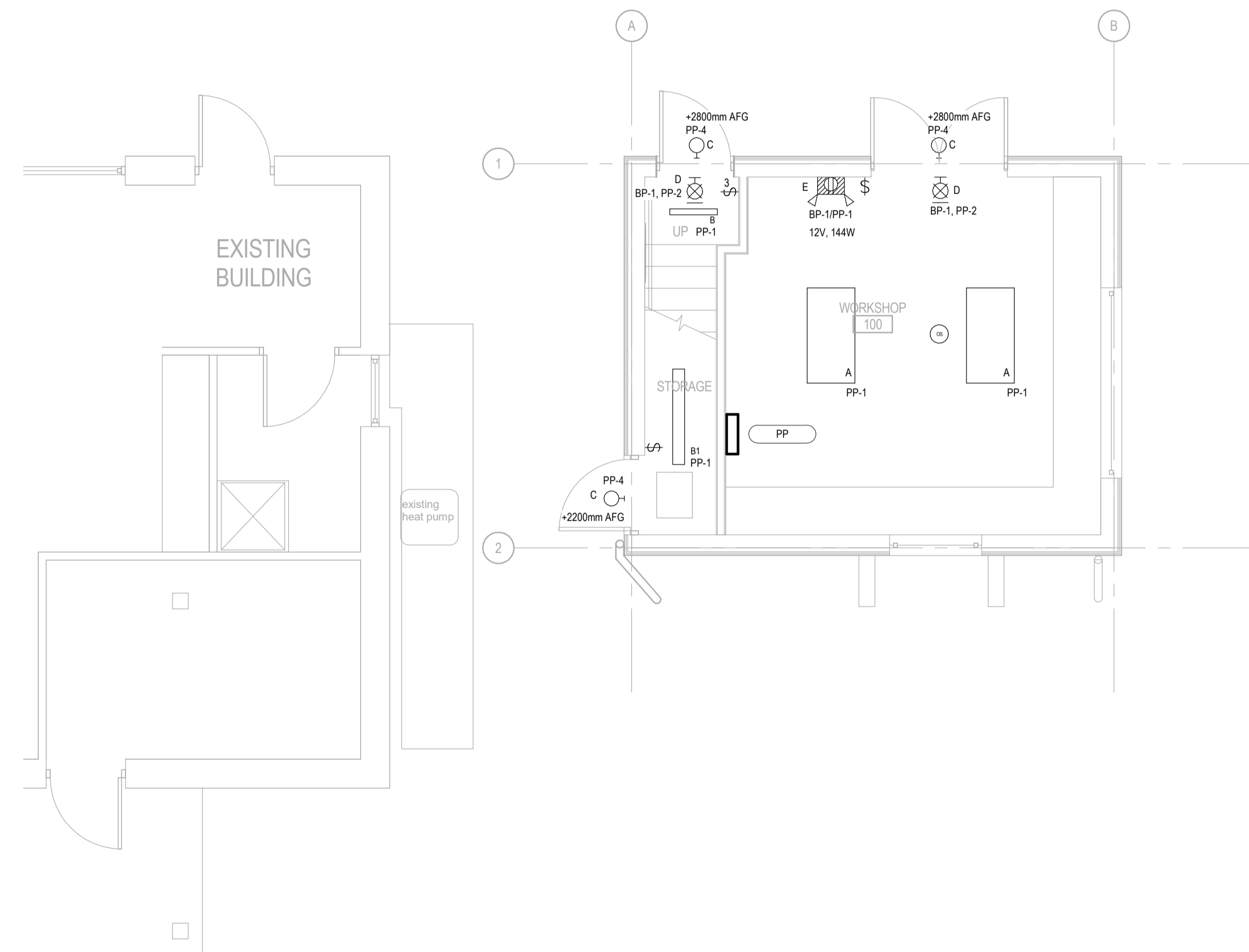
PROJECT NORTH TRUE NORTH



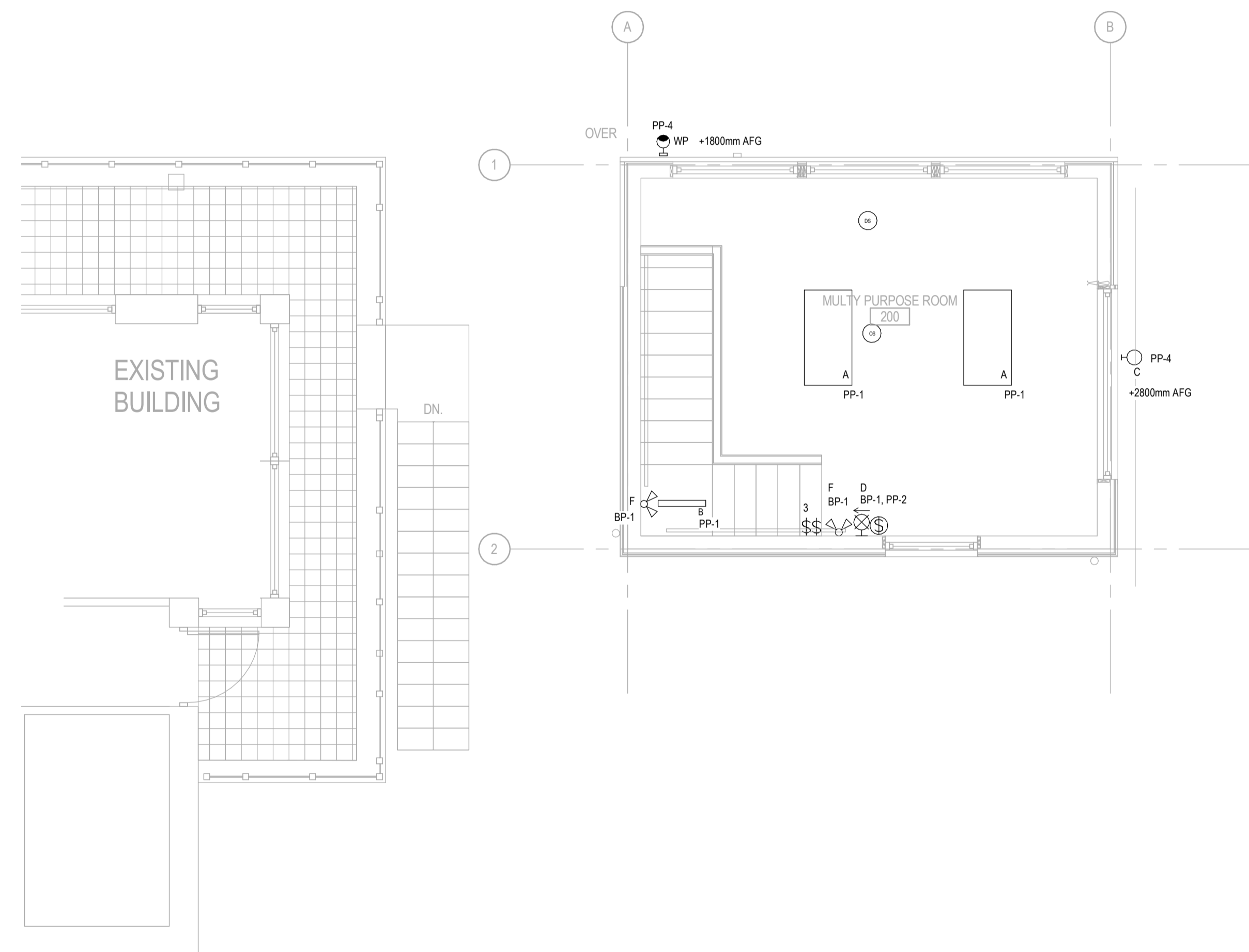
WSP  
301-3620 Uptown Blvd  
Victoria BC  
250-384-5510  
WWW.WSP.COM  
WSP PROJECT NUMBER  
201-09709-00



GENERAL NOTES:  
 1. EMERGENCY LIGHTING SHALL MEET BC BUILDING CODE REQUIREMENTS. ALL BATTERY PACK CALCULATIONS HAVE BEEN PERFORMED USING THE INDICATED REMOTE HEAD WATTAGE. IF CONTRACTOR SELECTS A REMOTE HEAD WITH A HIGHER WATTAGE RATING THEY SHALL BE RESPONSIBLE FOR ANY CHANGES REQUIRED IN THE BATTERY PACK TO MEET THE MINIMUM ILLUMINATION DURATION REQUIREMENT.  
 2. THE CONTRACTOR IS TO SUPPLY ALL NECESSARY TEMPORARY EMERGENCY LIGHTING DURING CONSTRUCTION AS REQUIRED.  
 3. THE WIRING, OPERATION AND COMPATIBILITY OF NEW EMERGENCY LIGHTING EQUIPMENT IS TO BE COORDINATED WITH THE MANUFACTURER. ENSURE THE DESIGN INTENT IS MET AND A FULLY FUNCTIONAL SYSTEM IS YIELDED.  
 4. CONTRACTOR TO FIELD VERIFY ALL EXTERIOR FIXTURE HEIGHTS PRIOR TO INSTALLATION AND NOTIFY THE DEPARTMENT REPRESENTATIVE OF ANY CHANGES.



1 MAIN FLOOR LIGHTING PLAN - NEW  
E-110 1:50



2 UPPER FLOOR LIGHTING PLAN - NEW  
E-110 1:50

Revision Number	Description/Description	Date/Date
4	RE-ISSUED FOR TENDER	2021.08.25
3	ISSUED FOR TENDER	2021.01.28
2	ISSUED FOR 100% CLIENT REVIEW	2021.01.18
1	ISSUED FOR 75% CLIENT REVIEW	2020.12.18

Client/client  
**FISHERIES AND OCEANS,  
 REAL PROPERTY,  
 SAFETY AND SECURITY**

**VANCOUVER, BC  
 200-401 BURRARD ST.**

Project title/Titre du projet

**KITSILANO CCG SAR -  
 WORKSHOP  
 RECONSTRUCTION**

Consultant Signature Box Only

Designed by/Concept par  
**SA/TD** Approved by/Approuvée par  
**TD**

Drawn by/Dessiné par  
**SA/HW**

PWGSC Project Manager/Administrateur de Projets TPSGC

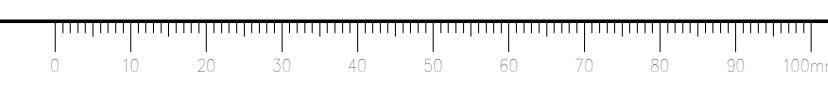
PWGSC, Regional Manager, Architectural and Engineering Services/  
 Gestionnaire régionale, Services d'architectural et de génie, TPSGC

Drawing title/Titre du dessin

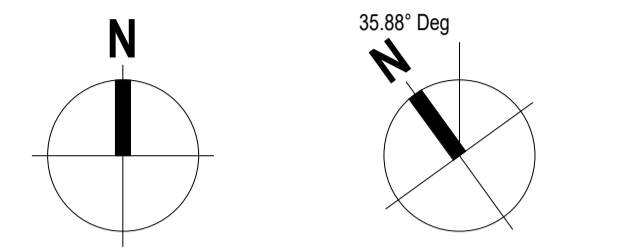
**ELECTRICAL  
 LIGHTING PLAN**

Project No./No. du projet <b>F521A-210639</b>	Sheet/ Feuille <b>E-110</b>	Revision no./ La Revision no. <b>4</b>
--	--------------------------------	---

8/25/2021 3:49:46 PM



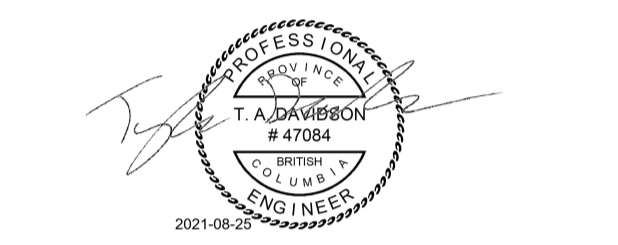




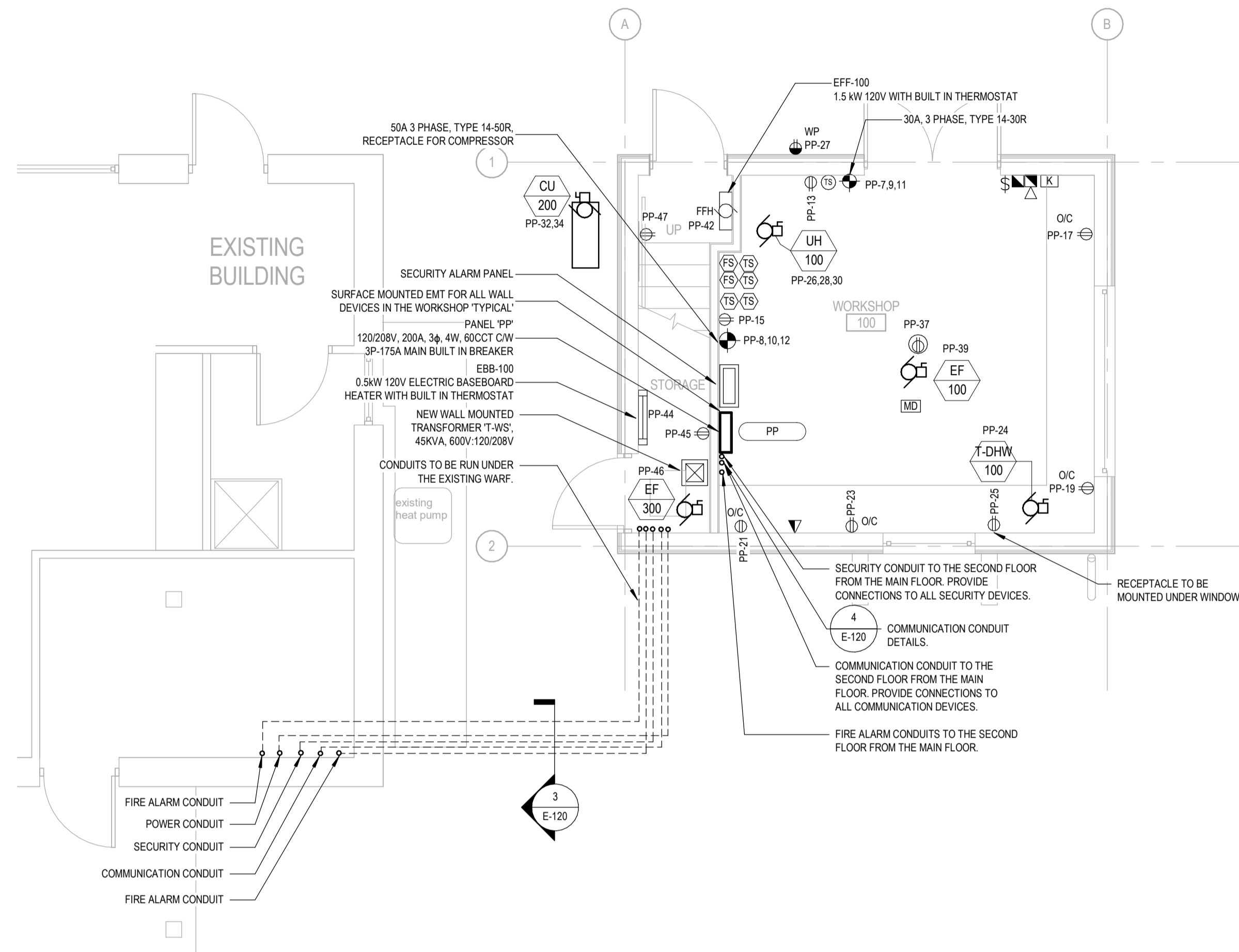
PROJECT NORTH TRUE NORTH



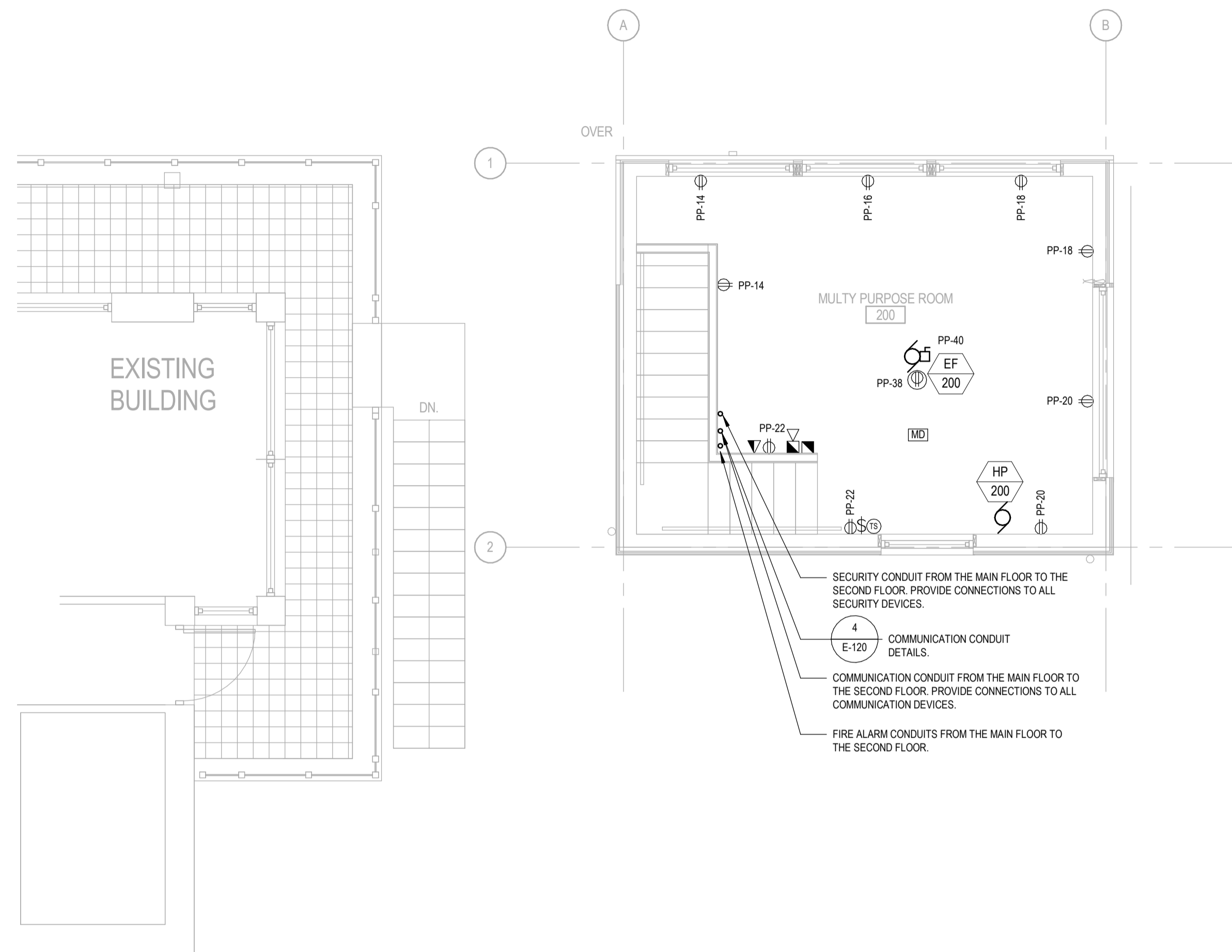
WSP PROJECT NUMBER: 201-09709-00  
301-3620 Uptown Blvd Victoria BC 250-384-5510 WWW.WSP.COM



- GENERAL NOTES:**
- CONTRACTOR TO PROVIDE WEATHERPROOF EXPANSION FITTINGS ON WALKWAY PRIOR TO CONDUITS ENTERING/ EXITING EXISTING BUILDING AND THE NEW WORKSHOP BUILDING.
  - CONTRACTOR TO FIELD VERIFY THE EXISTING FIRE ALARM SYSTEM AND SHALL NOTIFY THE DEPARTMENT REPRESENTATIVE OF ANY CHANGES OR MODIFICATIONS PRIOR TO CONSTRUCTION.
  - CONTRACTOR TO FIELD VERIFY THE EXISTING ACCESS CONTROL PANEL WITHIN THE EXISTING BUILDING AND PROVIDE A DOOR CONTROLLER AND POWER CONNECTIONS TO THE TWO NEW POWER DOORS WITHIN THE NEW WORKSHOP BUILDING.
  - CONTRACTOR TO PROVIDE HEAT TRACE TO NEW INCOMING FIRE MAIN. REFER TO M3.01 FOR DETAILS.
  - SPRINKLER UPGRADE TO BE PRICED SEPARATELY BY OTHERS. ALL FIRE ALARM DEVICES AND CONNECTIONS SHOWN ON THIS DRAWING ARE OPTIONAL SCOPE OF WORK WITH A SEPARATE BID BY THE CONTRACTOR. CONTRACTOR TO ONLY PROVIDE UNDERGROUND FIRE ALARM CONDUITS W/ PULL CORD TO WORKSHOP UNDER MAIN SCOPE OF WORK.
  - CONTRACTOR TO ALLOW FOR X-RAY SCANNING PRIOR TO CORING THROUGH MAIN BRIDGE FOR CONDUIT RUNS BETWEEN EXISTING AND NEW BUILDINGS.
  - ALL CONDUIT ENTRY/EXITS TO BUILDINGS, AND WITHIN BUILDINGS, SHALL BE 1 HOUR FIRE RATED.

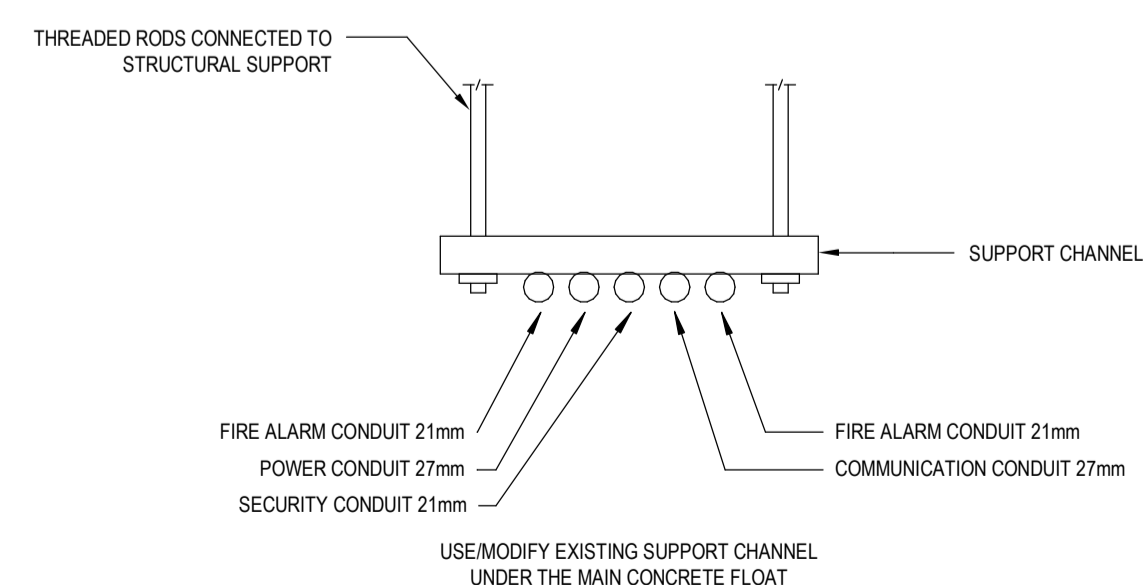


1 MAIN FLOOR POWER AND SYSTEMS PLAN  
E-120 1:50

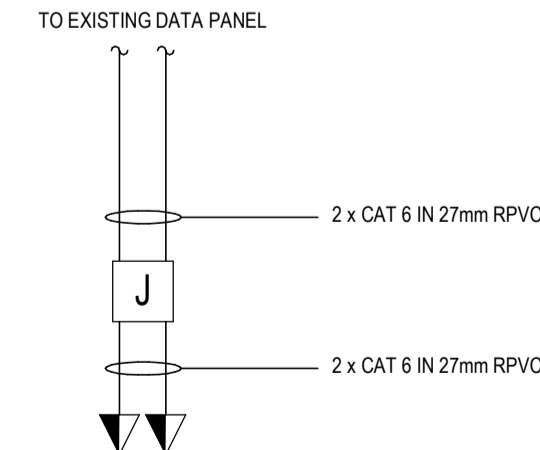


2 UPPER FLOOR POWER AND SYSTEMS PLAN  
E-120 1:50

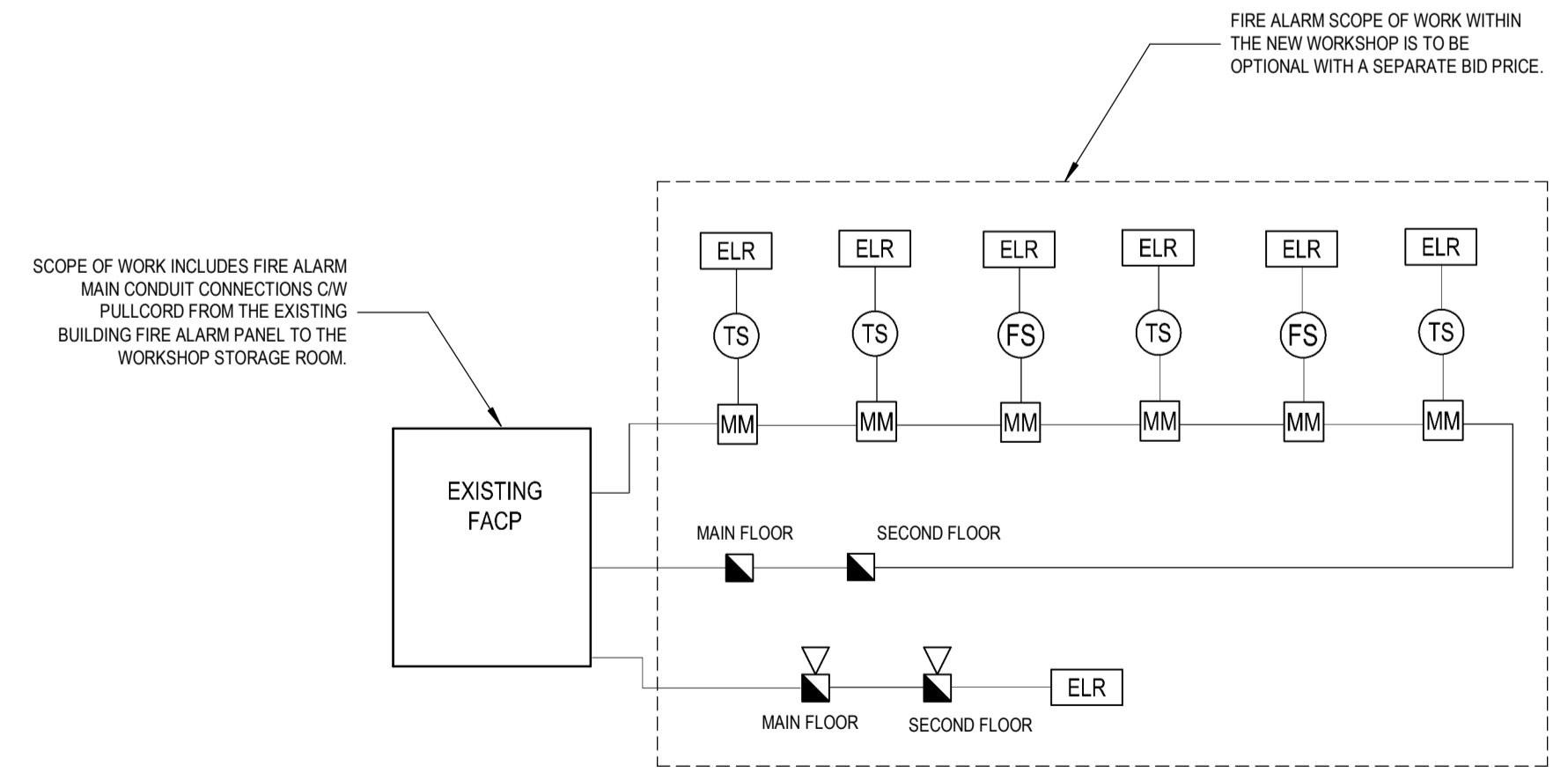
- NOTE:**
- METHOD OF BOLTING CABLE TRAY TO SUPPORTS REQUIRES THE CONSULTANTS REVIEW PRIOR TO INSTALLATION.
  - CONTRACTOR TO KEEP MINIMUM OF 300mm BETWEEN FIRE ALARM CONDUITS THROUGHOUT THE ROUTE.
  - ALL CONDUITS SHALL BE RPVC FOR EXTERIOR CONVERT TO EMT UPON ENTRY TO BUILDING.



3 TYPICAL CONDUIT SUPPORT DETAIL  
E-120 N.T.S.



4 COMMUNICATION CONDUIT DETAILS  
E-120 N.T.S.



5 FIRE ALARM RISER  
E-120 N.T.S.

Revision Number	Description/Description	Date/Date
4	RE-ISSUED FOR TENDER	2021.08.25
3	ISSUED FOR TENDER	2021.01.28
2	ISSUED FOR 100% CLIENT REVIEW	2021.01.18
1	ISSUED FOR 75% CLIENT REVIEW	2020.12.18

Client/client  
**FISHERIES AND OCEANS, REAL PROPERTY, SAFETY AND SECURITY**

**VANCOUVER, BC 200-401 BURRARD ST.**

Project title/Titre du projet

**KITSILANO CCG SAR - WORKSHOP RECONSTRUCTION**

Consultant Signature Box Only

Designed by/Concept par SA/TD Approved by/Approuvée par TD

Drawn by/Dessine par SA/HW  
PWGSC Project Manager/Administrateur de Projets TPSGC  
PWGSC, Regional Manager, Architectural and Engineering Services/ Gestionnaire régionale, Services d'architectural et de génie, TPSGC

Drawing title/Titre du dessin

**POWER AND SYSTEMS PLAN**

Project No./No. du projet F521A-210639	Sheet/ Feuille E-120	Revision no./ La Revision no. 4
---	-------------------------	------------------------------------

8/25/2021 3:49:49 PM







