

INSTITUTE OF OCEAN SCIENCES ENVIRONMENT CANADA

PATRICIA BAY, B.C. MARINE FACILITY

AS BUILT
DRAWINGS

DRAWING LIST

STRUCTURAL

S1 - EXISTING STRUCTURE
SITE PLAN
S2 - GENERAL
ARRANGEMENT
S3 - DREDGING PLAN
S4 - WHARF
GENERAL
ARRANGEMENT
S5 - WHARF
PILING & CRIB LAYOUT
S6 - WHARF - CRIBS
TYPICAL FIRST STAGE
CONC OUTLINE & REINF
S7 - WHARF
CRIB N° 1
CONC OUTLINE & REINF
S8 - WHARF
TYPICAL SECTIONS
S9 - WHARF
APPROACH
PILE CAPS
CONC OUTLINE & REINF

S10 - WHARF
PIER 1, 2 & CROSS PIER
PILE CAPS
CONC OUTLINE & REINF
S11 - WHARF
STANDARD CRIB DETAILS
KIOSK PAD AND
CLEAT DETAILS
S12 - WHARF AND APPROACH
KIOSK PAD AND
LAMP STANDAR DETAILS
S13 - WHARF
CROSS PIER
PILE CAP &
BEAM LAYOUT
S14 - WHARF
CROSS PIER
BEAMS
CONC OUTLINE & REINF
S15 - WHARF AND APPROACH
DECK PANEL AND
DRAINAGE DETAILS

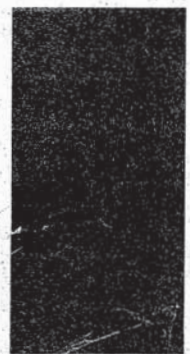
S16 - WHARF AND APPROACH
DECK PANEL
DETAILS
S17 - WHARF AND APPROACH
FENDER SYSTEM
DETAILS
S18 - WHARF
GENERAL
ARRANGEMENT
S19 - CAUSEWAY
TYPICAL SECTIONS
AND DETAILS
S20 - CAUSEWAY
SERVICE DUCT
CONC OUTLINE & REINF
S21 - LAUNCHING PIER
PLAN AND DETAILS
S22 - LAUNCHING PIER FLOATS,
SEAPLANE BASE
PLAN AND DETAILS
S23 - STANDARD 4' X 36'
STEEL - GANGWAY

MECHANICAL

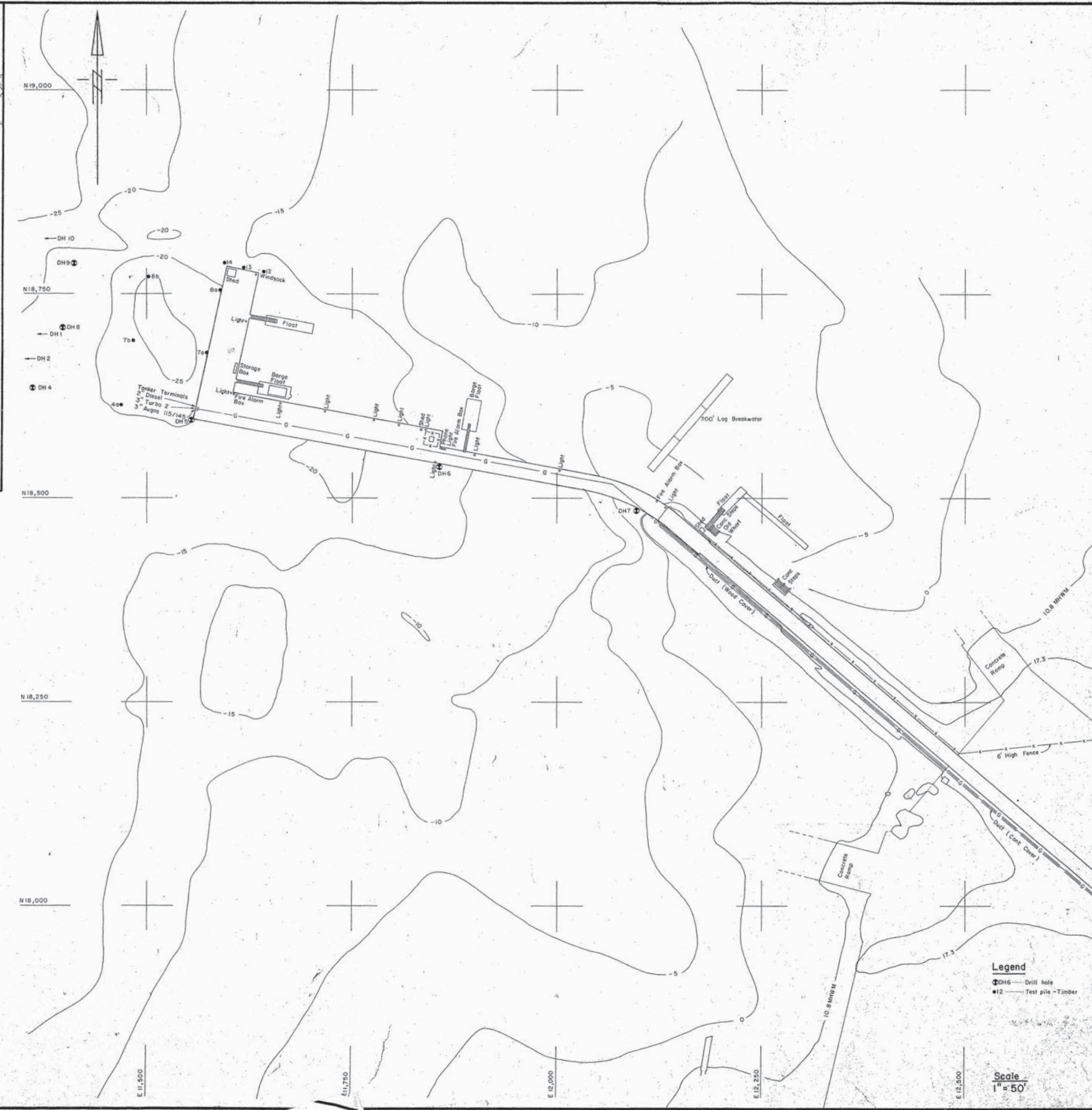
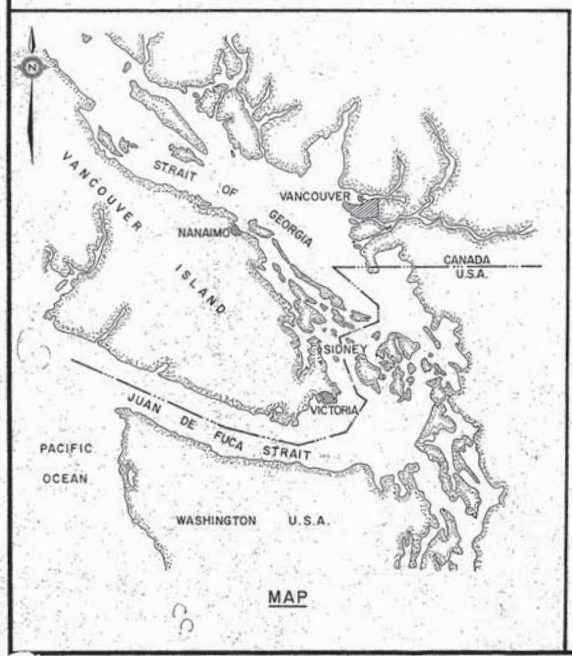
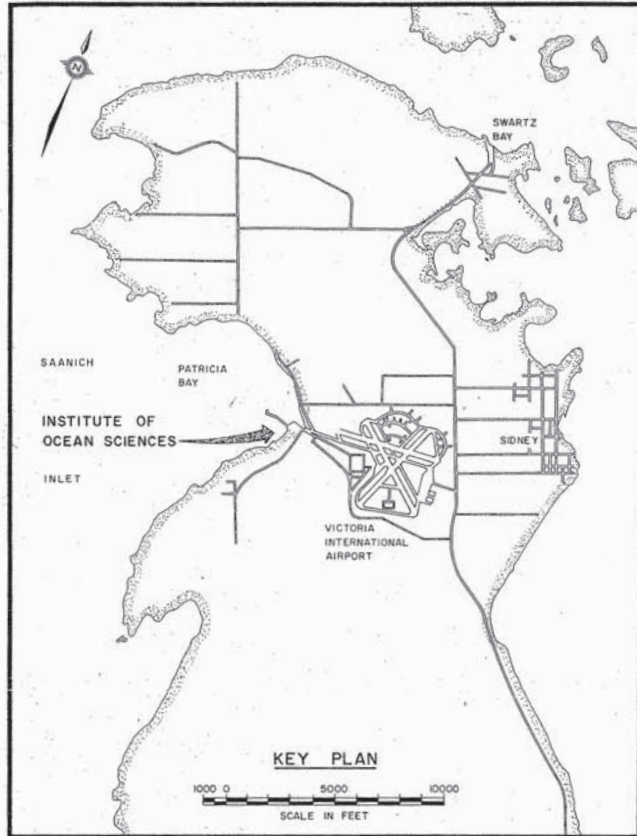
M1 - PARTIAL SITE PLAN (EAST)
M2 - PARTIAL SITE PLAN (WEST)
M3 - DETAILS OF VALVE PIT &
SERVICE TRENCH ON
APPROACH PIER
M4 - SERVICES TO APPROACH PIER
KIOSK
PLAN, SECTIONS & DETAILS
M5 - PLAN OF CRIB AT TRESTLE
HEAD
M6 - HOLDING TANKS
SECTIONS & DETAILS
M7 - CRIB DETAILS - SOUTH FINGER
M8 - SMALL BOAT HARBOUR
M9 - DETAILS
M10 - CRIB DETAILS - NORTH FINGER

ELECTRICAL

E1 - CAUSEWAY PLAN
E2 - WHARF PLANS -
FEEDER PLAN
AND
LIGHTING AND POWER PLAN
E3 - KIOSKS - ELECTRICAL
EQUIPMENT DETAILS
E4 - CRIB DETAILS
AND
KIOSK ASSEMBLY DETAILS
E5 - LIGHTING DETAILS
AND
SUBSTATION DETAILS
E6 - DISTRIBUTION SINGLE
LINE DIAGRAM
AND
PANELBOARDS



Public Works Canada



Public Works Canada / Travaux publics Canada

PACIFIC REGION

INSTITUTE OF OCEAN SCIENCES ENVIRONMENT CANADA

A detail no. sheet no.
 B/C location drawing no. site design no.
 drawing no. design no. date
 A - Contours revised

PATRICIA BAY, B.C. MARINE FACILITY

EXISTING STRUCTURE SITE PLAN

Legend
 DH 1-10 Drill hole
 12 Test pile - Timber

Scale
 1" = 50'

89323
 S I

A - Cross pier layout & 2 approach pile caps changed Dec 2/74
 B - Contours revised

project title: Patricia Bay, B.C. Marine Facility

PATRICIA BAY, B.C. MARINE FACILITY

GENERAL ARRANGEMENT

designed by: H.D.T.

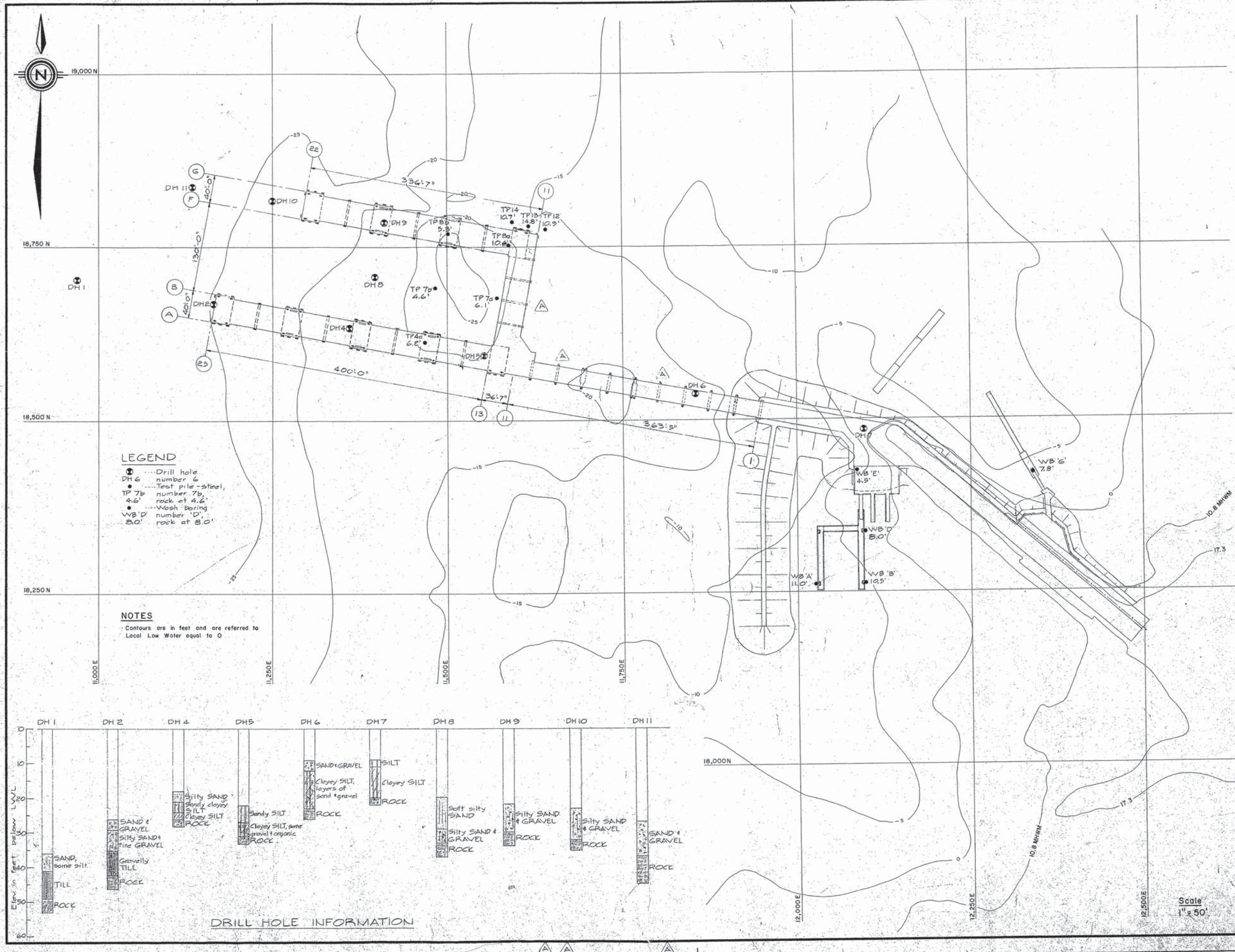
checked by: [Signature]

approved by: [Signature]

D.P.W. Project Manager / Administrateur de projets M.T.P.

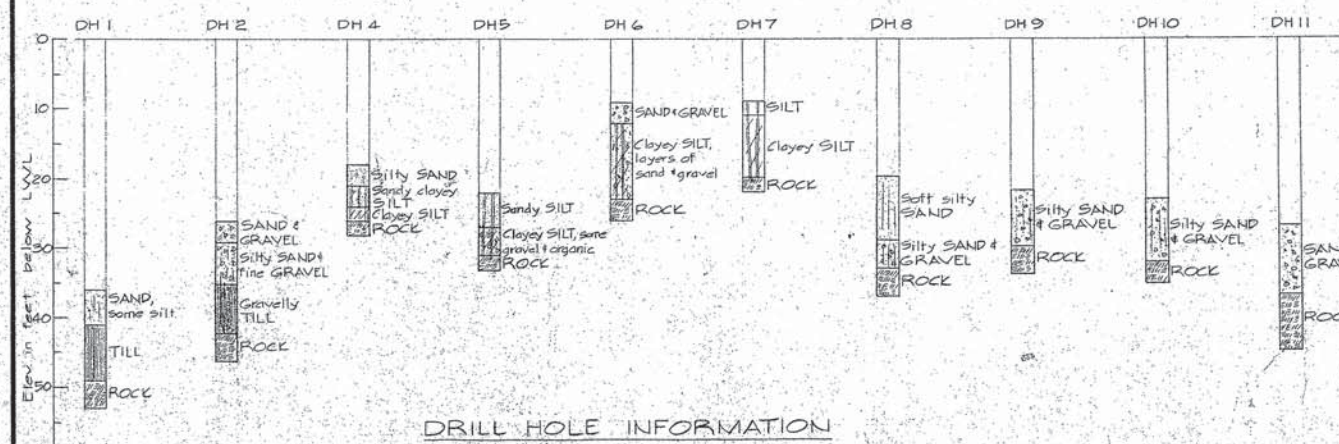
project number: 89323

drawing no.: S 2

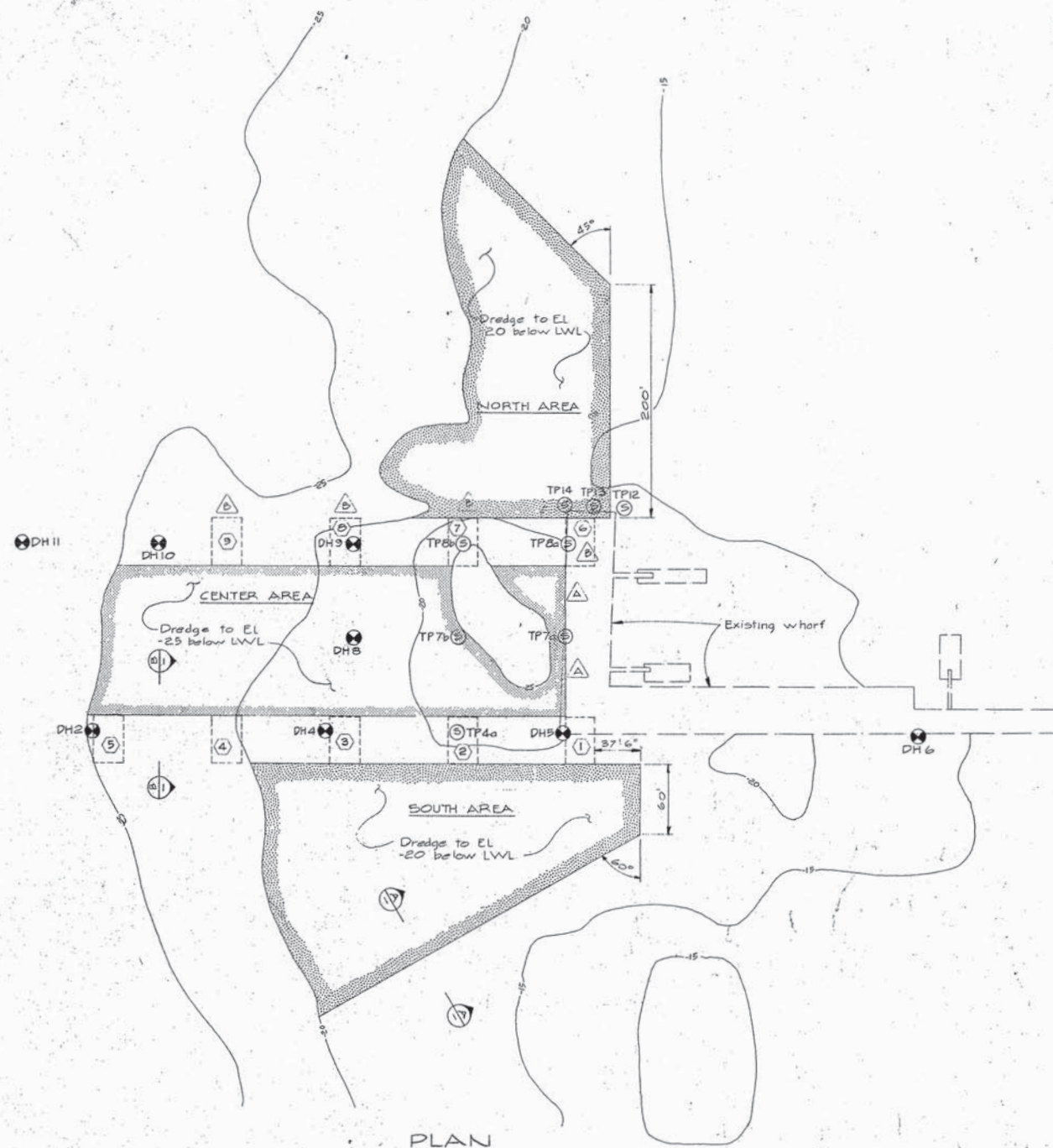


LEGEND
 ● Drill hole number &
 ● Test pile - steel, number 7a, 4.6' rock at 4.6'
 ● Wash Boring number 'D', 8.0' rock at 8.0'

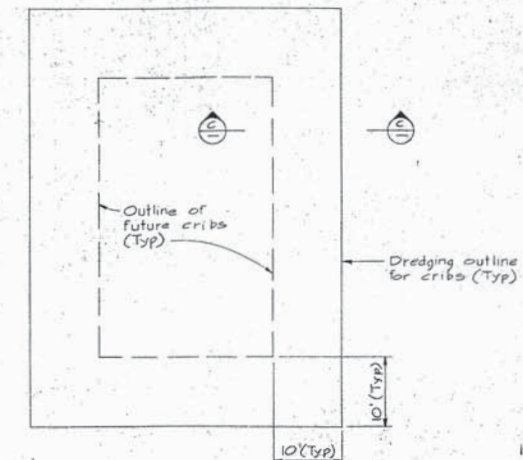
NOTES
 Contours are in feet and are referred to Local Low Water equal to 0



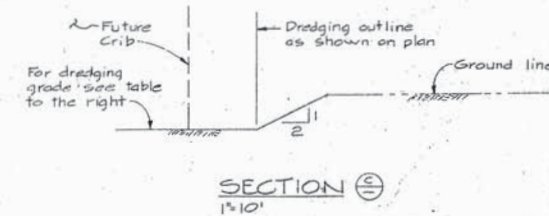
Scale 1" = 50'



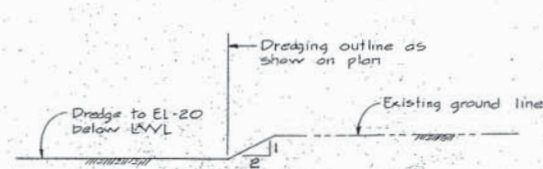
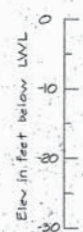
PLAN
1" = 50'



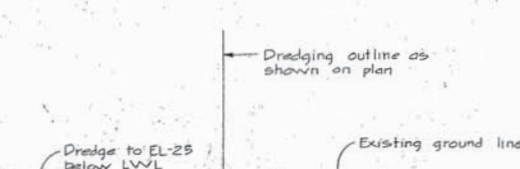
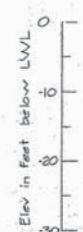
PLAN OF CRIB DREDGING
1" = 10'



At crib No. 1 dredge to Rock	
2	Rock
3	Rock
4	Rock
5	Till
6	Rock
7	EL-26
8	EL-26
9	EL-26



SECTION ①
1" = 10'



SECTION ②
1" = 10'

LEGEND

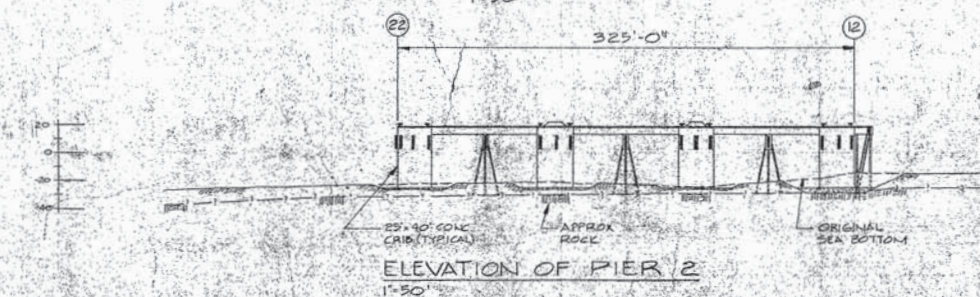
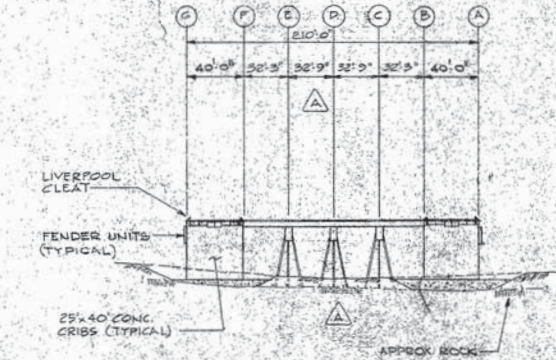
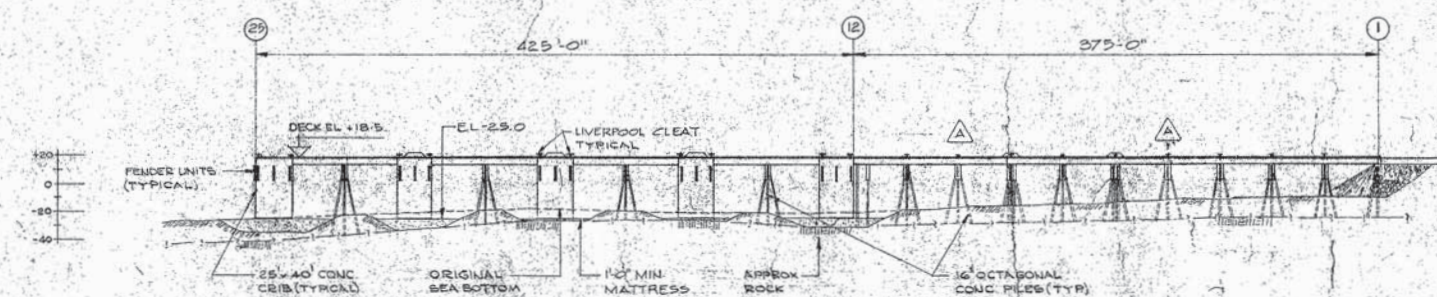
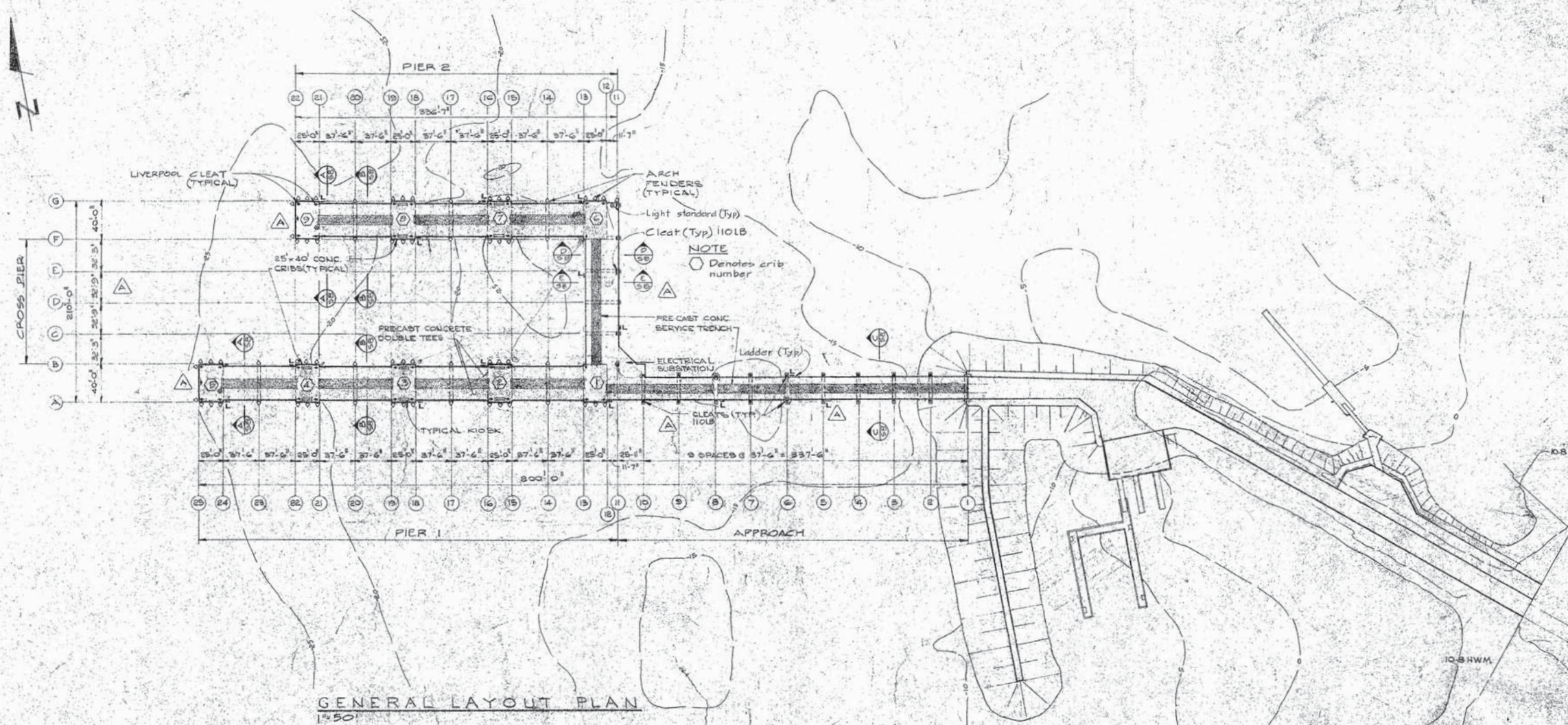
- ⊙ Drill hole
- DH 6
- ⊙ Test pile - Steel
- TP 12
- ⊙ Crib number

A detail no. 0940 no.
A location drawing no. sur dessin no.
C drawing no. dessin no.
Revisions
A - Removed dredging at Cribs #6 & #7, Rec 2/74
B - Renumber Cribs #8, #9, #10 & #11 to read #6, #7, #8 & #9 - 4 contours revised

PATRICIA BAY, B.C.
MARINE FACILITY

DREDGING PLAN

designed by <i>[Signature]</i> date 11-5-75	checked by H.D.T. date
approved by <i>[Signature]</i> date 11-5-75	approved by date
D.P.M. Project Manager / Administrateur de projets S.P.P.	
project number 89323	
drawing no. S 3	



- LEGEND**
- L Ladders
 - Light standards
 - Arch fenders unit
 - 110 Lb 275 Liverpool cleat
 - 110 Lb 275 Barge cleat
 - 10" Cylindrical fenders

NOTE

For details of fender system see Dwg 517

A Detail no.	Sheet no.
B Location drawing no.	Site drawing no.
C Drawing no.	Drawn no.

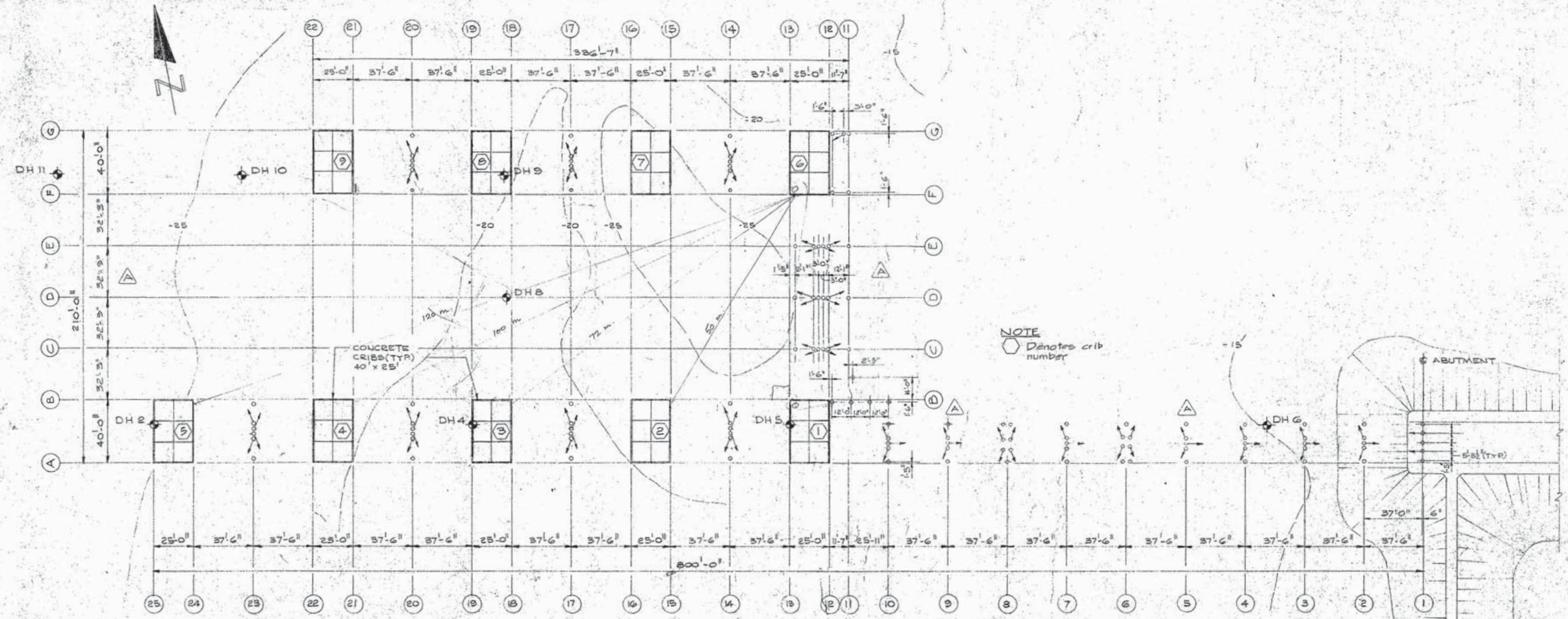
A - General revision 02/88 to Plan 4 Elevations
B - Ladders, fenders & cleats clarified on plan - Legend added - Contours revised

designed by: [Signature]
checked by: H.C.T. / Tom De Gooze
approved by: [Signature]

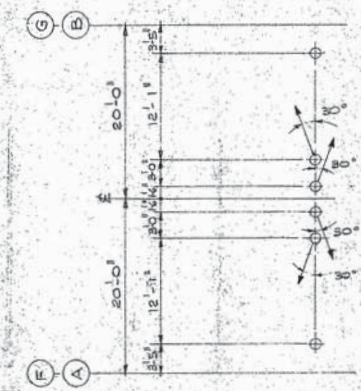
approved by: [Signature]
checked by: [Signature]
D.P.W. Project Manager / Administrateur de projets M.P.A.
project number: 89323

A	sheet no.	total no.
B/C	location drawing no.	total no.
	drawing no.	sheet no.

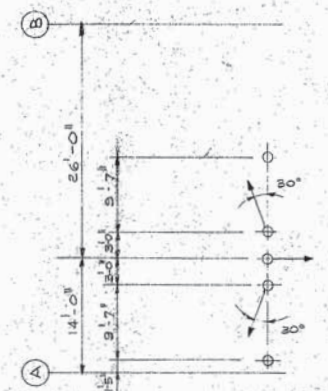
revisions
A - Revise pile layout on Cross pier, Lines 5, 9, 10 + B, Rev 2/74
B - Notes added



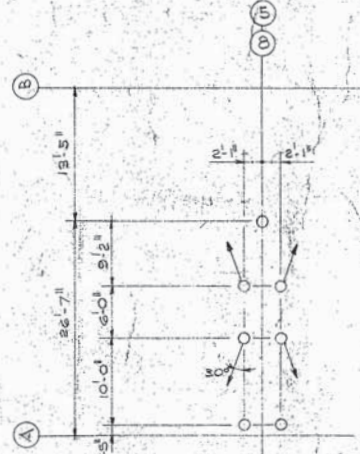
PILES AND CRIBS LOCATION PLAN
1" = 30'



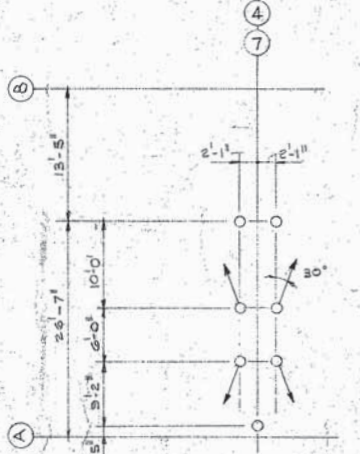
PILES LAYOUT
ON LINES 14, 17, 20, 23
(PIERS 14, 17, 20, 23)
PILE LAYOUT SIMILAR
ON LINES 'C', 'D', 'E'



PILES LAYOUT
ON LINES 2, 3, 4, 5, 7, 9 + 10



PILES LAYOUT
ON LINE 6



PILES LAYOUT
ON LINE 8

- NOTES**
- Embedment of piles in caps and/or beams shall be 4" min, 6" max
 - 0 - Denotes scattered piles
 - Slope: 1:5
 - All cone piles in approach bents, abutment & cross piers/bents to be cut off at EL 11.95 (3.0')
 - All cone piles in pier 1 & 2 bents to be cut off at EL 12.01 (4.0')
 - All cone piles in beams 1, 2, 3 & 4 to be cut off at EL 13.52 (5.1')
 - Pile locations are dimensioned 4' above base of caps

project title site du projet

PATRICIA BAY, B.C.
MARINE FACILITY

drawing title titre du dessin

WHARF
PILING & CRIB LAYOUT

designed by conçu par

date 11.8.74

drawn by dessiné par

date 11.8.74

checked by vérifié par

date 11.8.74

approved by approuvé par

date 11.8.74

project number no. du projet

89323

drawing no. dessin no.

S 5

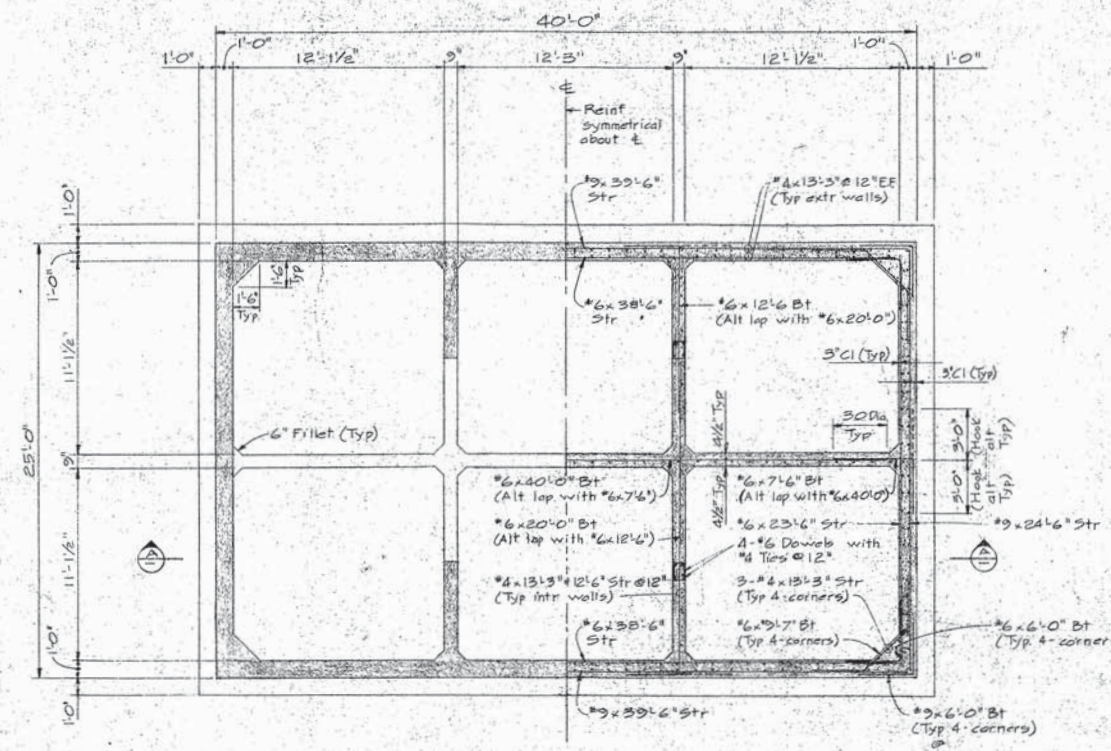


Department of Public Works
Ministère des Travaux publics

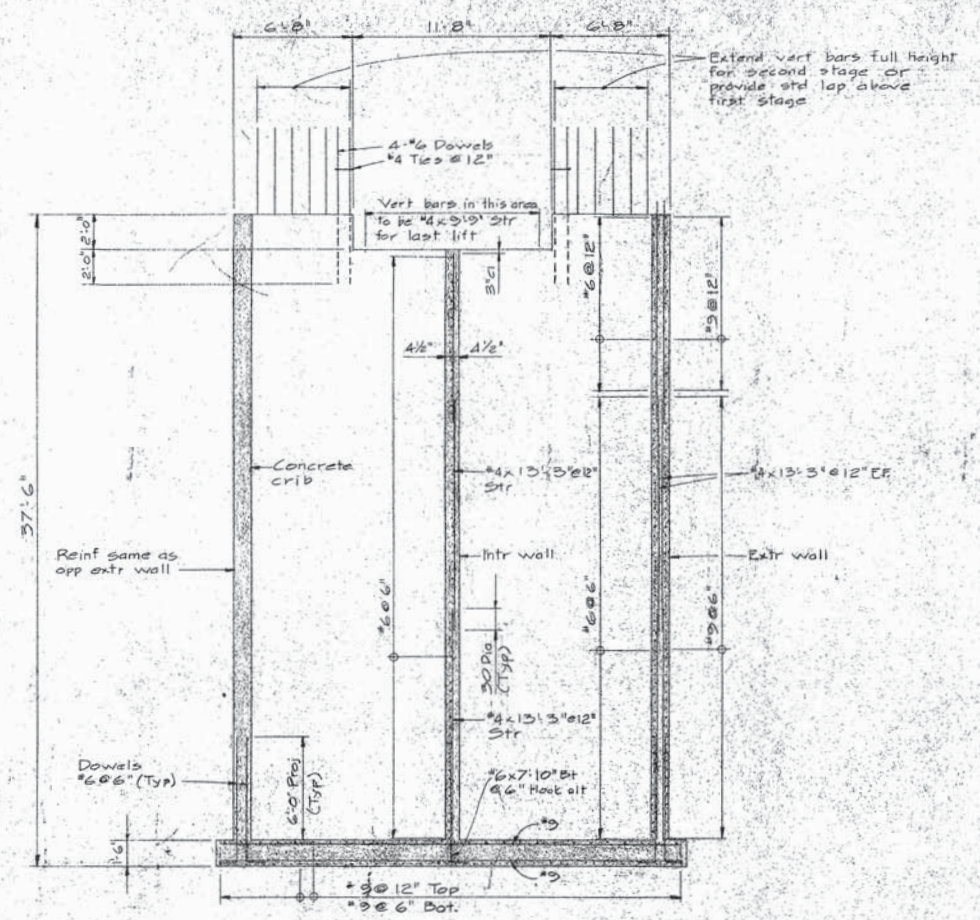
PACIFIC REGION

INSTITUTE OF
OCEAN SCIENCES
ENVIRONMENT CANADA

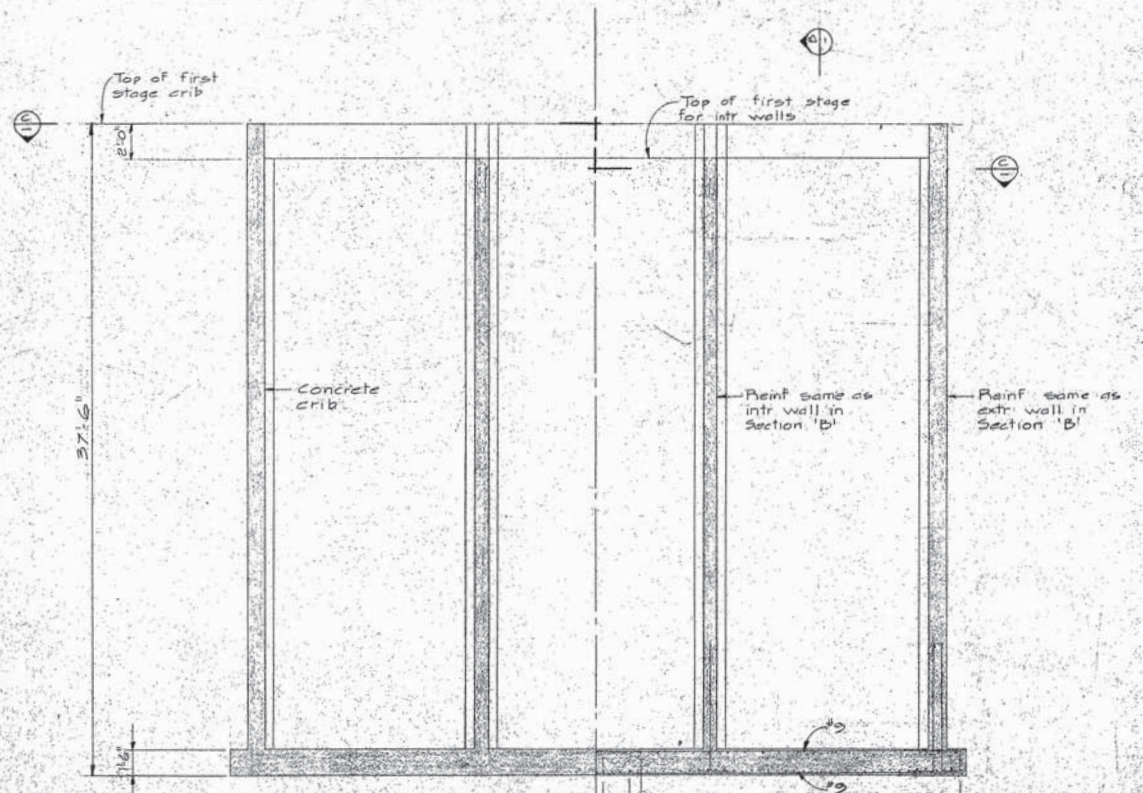
A	Detail no.	Detail no.
B/C	Location drawing no.	See detail no.
	Drawing no.	Sheet no.
Revisions		
A	General revision	Date



SECTION A THRU CONCRETE CRIB
1/4" = 1'-0"



SECTION B
1/4" = 1'-0"



SECTION C
1/4" = 1'-0"

NOTE
For differences of first stage in Crib No. 1 see Dwg 57
For details of second stage in Crib No. 1 see Dwg 511

PROJECT TITLE: PATRICIA BAY, B.C. MARINE FACILITY

WHARF - CRIBS
TYPICAL FIRST STAGE
CONC OUTLINE & REINF

DESIGNED BY: <i>[Signature]</i>	CHECKED BY:
DATE: 12.2.75	DATE:
DRAWN BY: D.T. 4 TOWN DR. COURTESY, DESIGNED BY:	DATE:
REVIEWED BY:	APPROVED BY:
DATE:	DATE:
TITLE: <i>[Signature]</i>	DESIGNER:
D.P.W. PROJECT MANAGER: ADMINISTRATOR DE PROJETS M.T.S.	PROJECT NUMBER: 89323
DATE: 12.2.75	SHEET NO: S 6



Department of Public Works
Ministère des Travaux publics

PACIFIC REGION

INSTITUTE OF
OCEAN SCIENCES
ENVIRONMENT CANADA

A	Sheet no.	89323
B	Location drawing no.	see detail no.
C	Drawing no.	89323

A - General revision to all sections. Section "F" deleted. Dec 2/78.
 B - General revision.
 C - As built.

Project title: WHARF TYPICAL SECTIONS

PATRICIA BAY, B.C.
MARINE FACILITY

Drawing title: WHARF TYPICAL SECTIONS

Designed by: [Signature] Date: 11-5-78

Checked by: [Signature] Date: 11-5-78

Approved by: [Signature] Date: 11-5-78

Project Manager: [Signature] Date: 11-5-78

Project number: 89323

Drawing no.: S 8

Sheet no.: S 8

Scale: 1/4" = 1'-0"

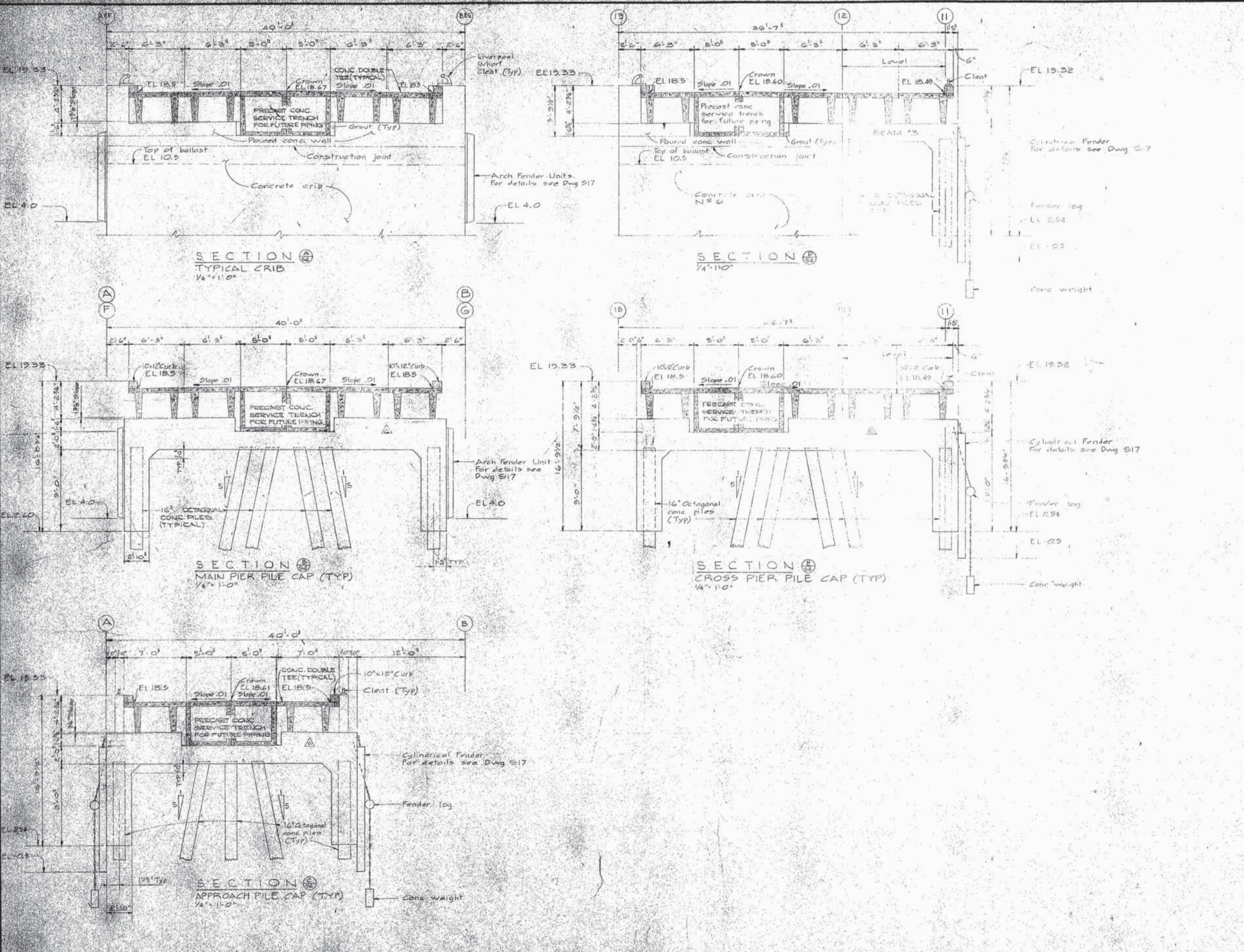
Sheet no.: S 8

Sheet no.: S 8

Sheet no.: S 8

Sheet no.: S 8

Sheet no.: S 8





Department of Public Works
Ministère des Travaux publics

PACIFIC REGION

INSTITUTE OF
OCEAN SCIENCES
ENVIRONMENT CANADA

A - Detail no. 01033 no.
B/C - Location drawing no. sur dalle no.
C - Drawing no. dessin no.

revision
A - Service of the project
B - pour les détails
C - A11-123

project title titre du projet

PATRICIA BAY, B.C.
MARINE FACILITY

drawing title titre de dessin
WHARF
APPROACH
PILE CAPS
CONC OUTLINE & REINF

designed by conçu par
date

drawn by D.T. & T. De Couling checked par
date

revised by révisé par
date

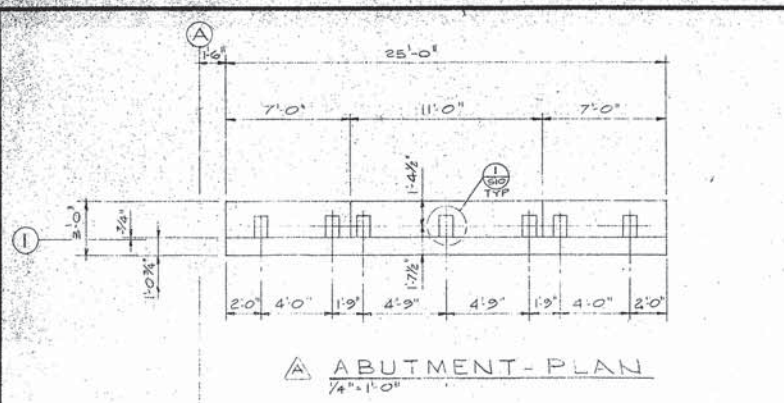
approved by approuvé par
date

Drawn by D.T. & T. De Couling
D.F.M. Project Manager Administrateur de projets M.F.P.
project number no. de projet

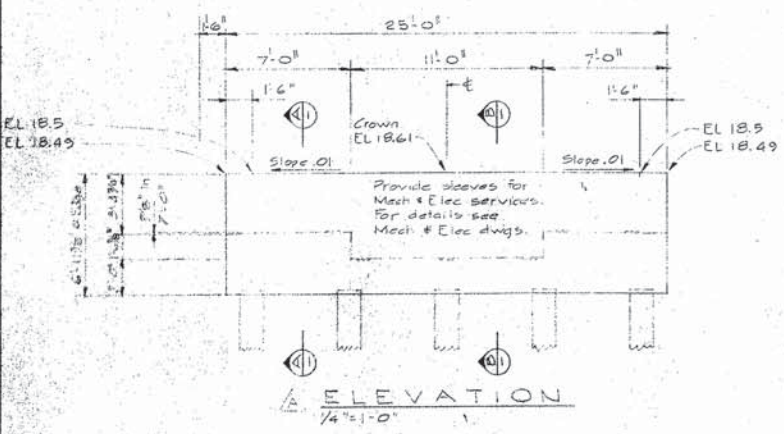
89323

drawing no. dessin no.

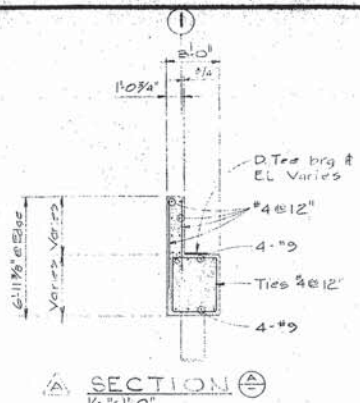
S 9



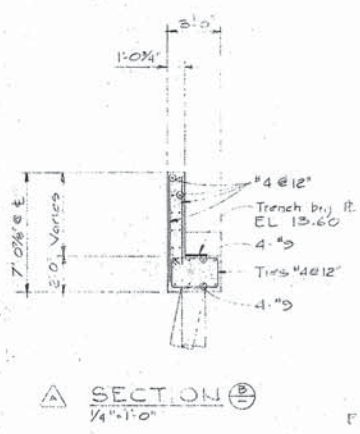
ABUTMENT-PLAN
1/4"=1'-0"



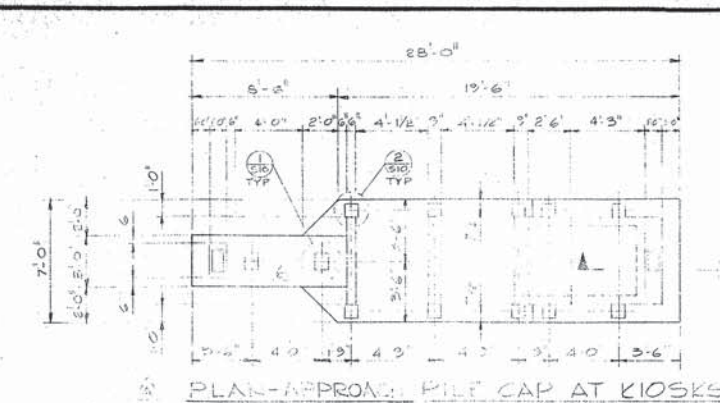
ELEVATION
1/4"=1'-0"



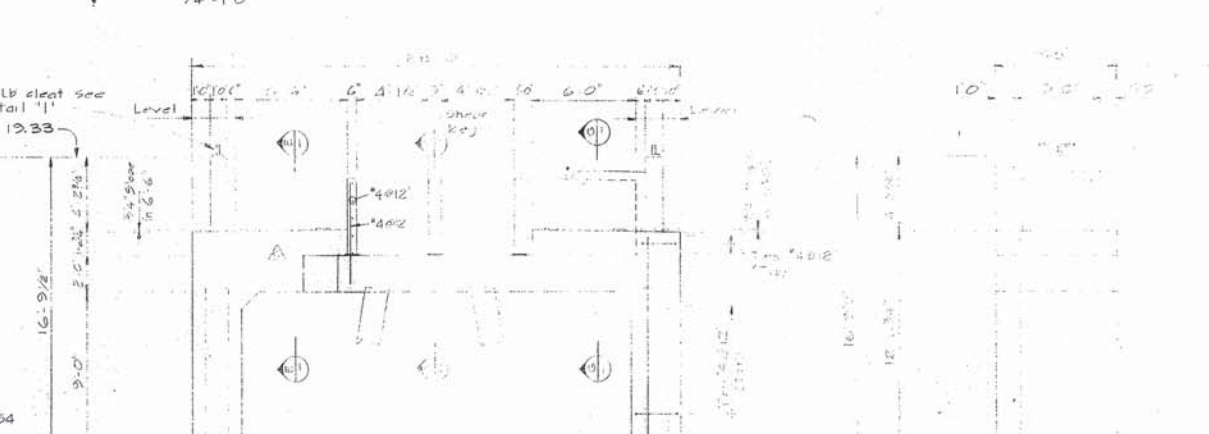
SECTION A
1/4"=1'-0"



SECTION B
1/4"=1'-0"

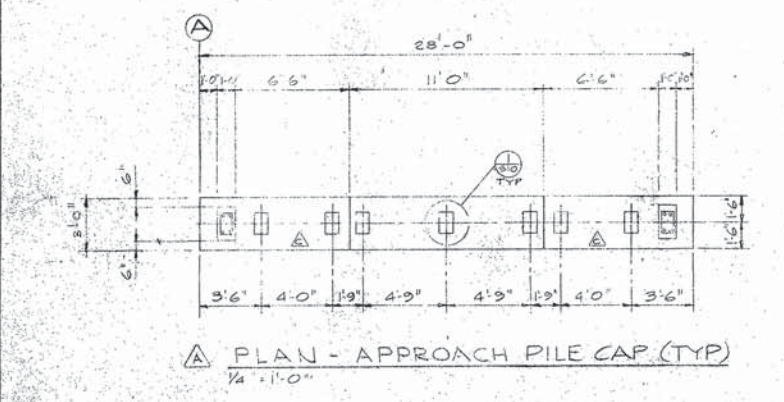


PLAN-APPROX. PILE CAP AT KIOSKS
1/4"=1'-0"

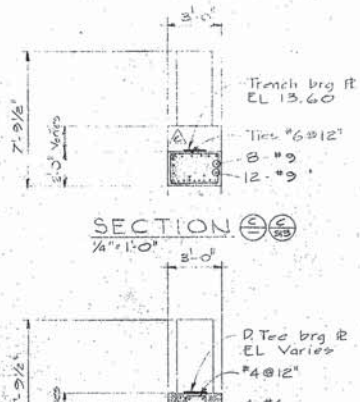


FRONT ELEVATION
1/4"=1'-0" (FENDER SYSTEM NOT SHOWN)

SIDE ELEVATION
1/4"=1'-0"

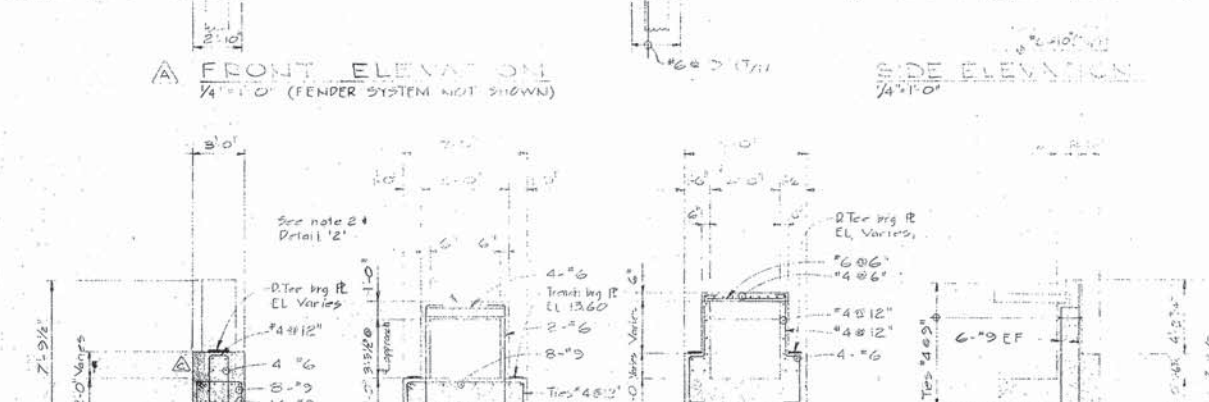


PLAN - APPROACH PILE CAP (TYP)
1/4"=1'-0"



SECTION C
1/4"=1'-0"

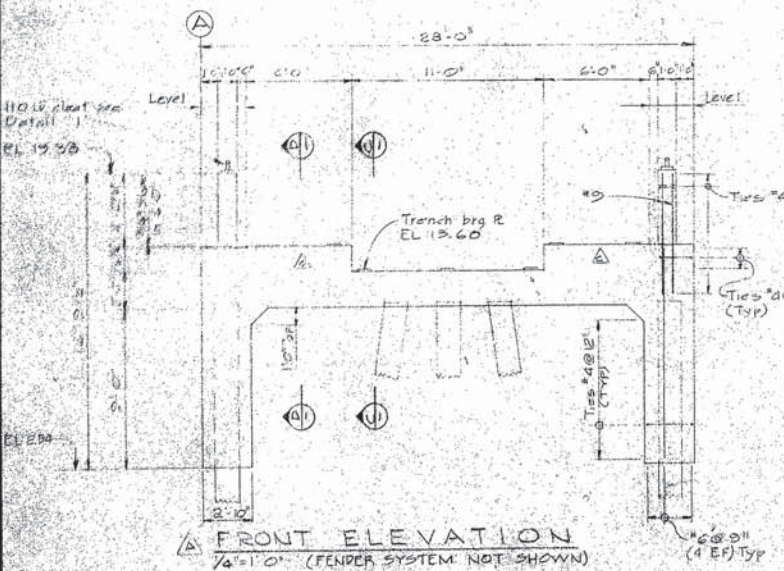
SECTION D
1/4"=1'-0"



SECTION E
1/4"=1'-0"

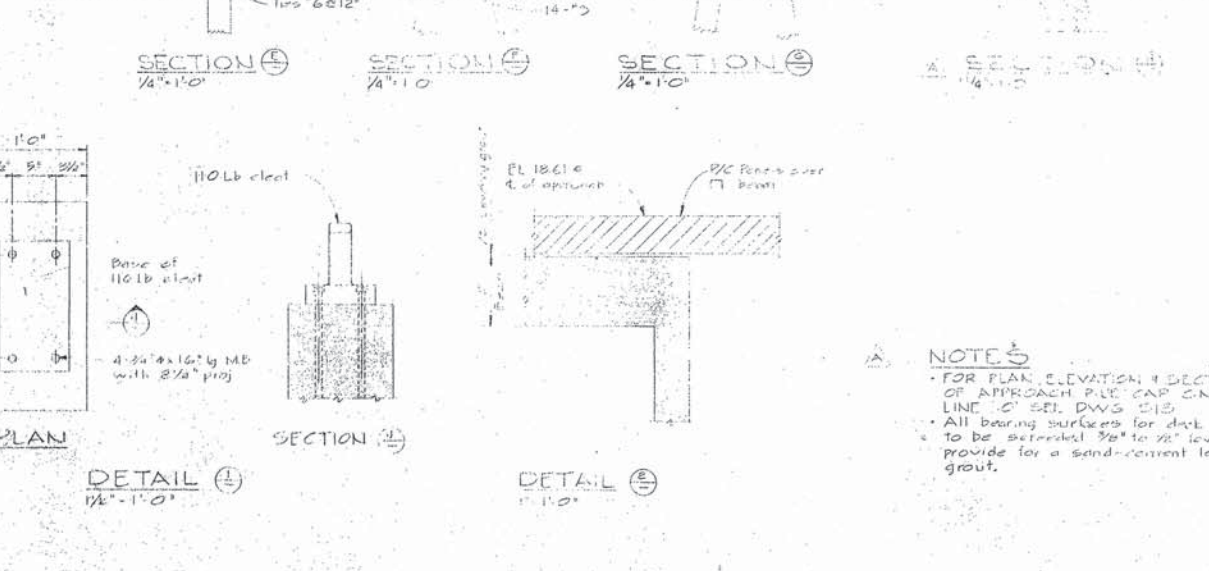
SECTION F
1/4"=1'-0"

SECTION G
1/4"=1'-0"



FRONT ELEVATION
1/4"=1'-0" (FENDER SYSTEM NOT SHOWN)

SIDE ELEVATION
1/4"=1'-0"



DETAIL 1
1/4"=1'-0"

DETAIL 2
1/4"=1'-0"

NOTES
• FOR PLAN, ELEVATION & SECTIONS OF APPROACH PILE CAP ON LINE 'C' SEE DWS 213.
• All bearing surfaces for deck panels to be finished 3/8" to 1/2" low to provide for a sand-cement leveling grout.



Department of Public Works
Ministère des Travaux publics

PACIFIC REGION

INSTITUTE OF
OCEAN SCIENCES
ENVIRONMENT CANADA

A detail no. detail no.
B location drawing no. sur dessin no.
C drawing no. dessin no.

revisions
A - Closest protection on cross pier pile cap removed Dec 2/74
B - General revision
C - As built

PATRICIA BAY, B.C.
MARINE FACILITY

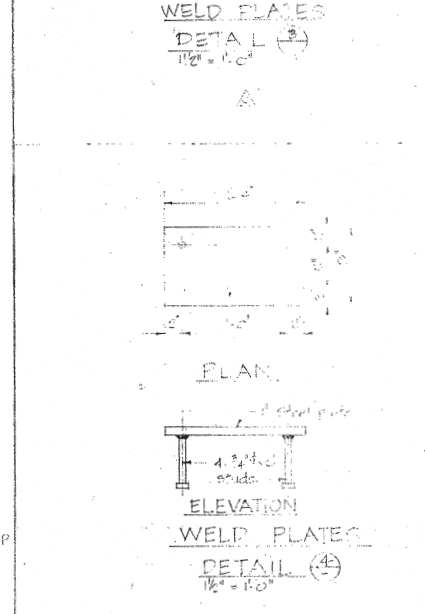
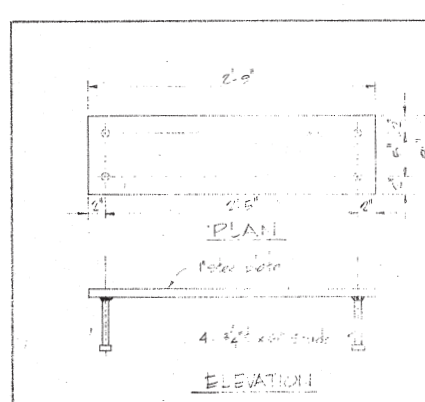
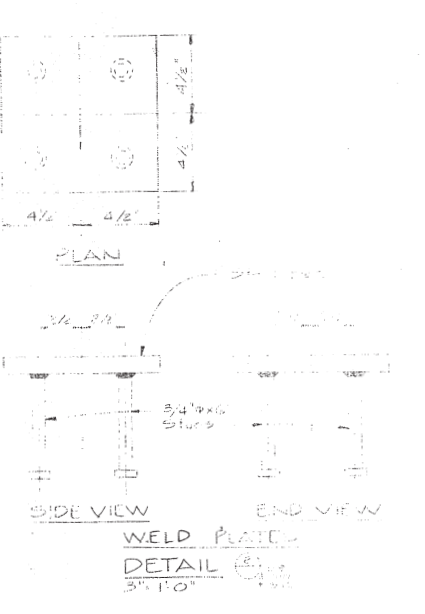
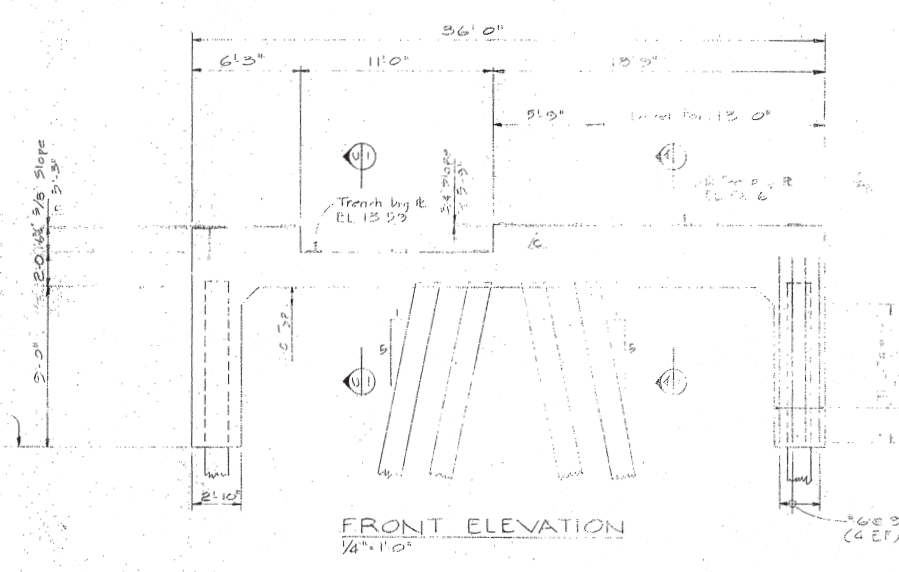
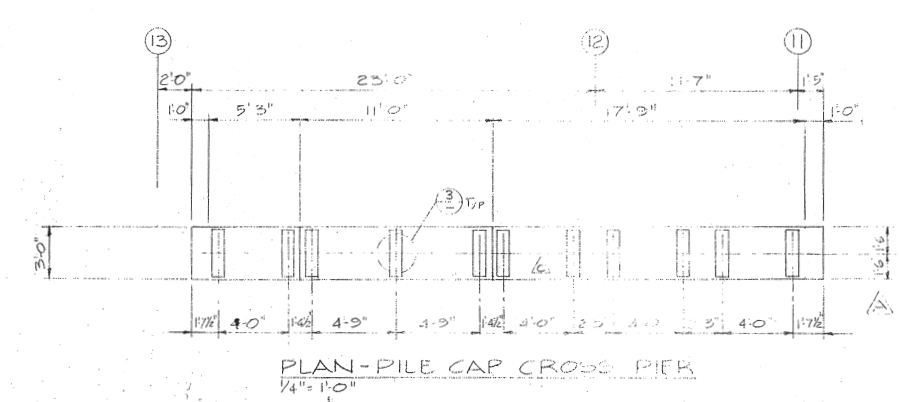
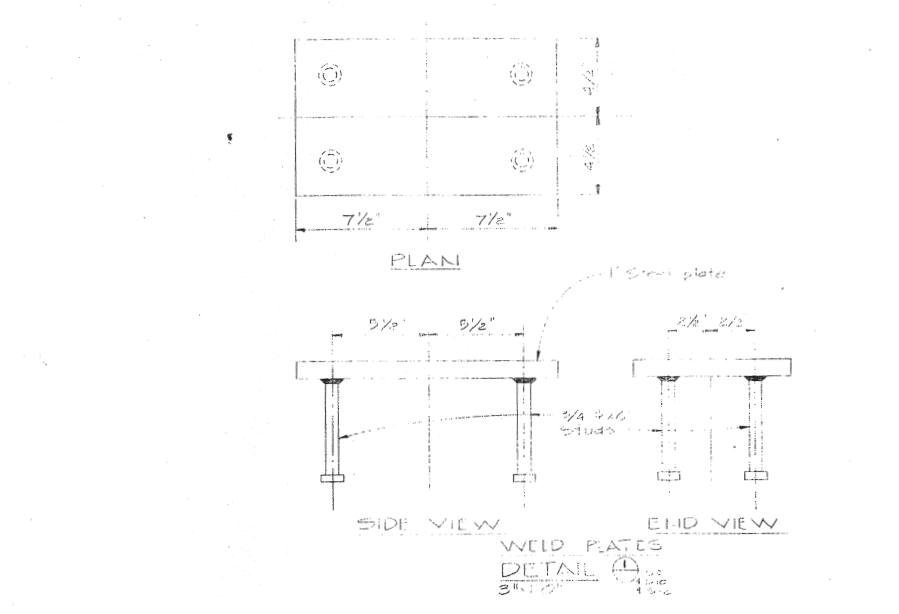
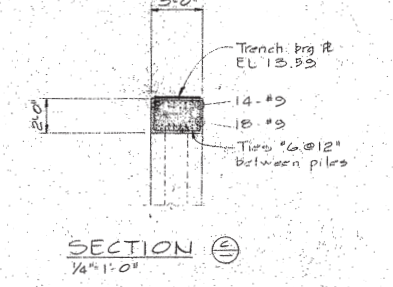
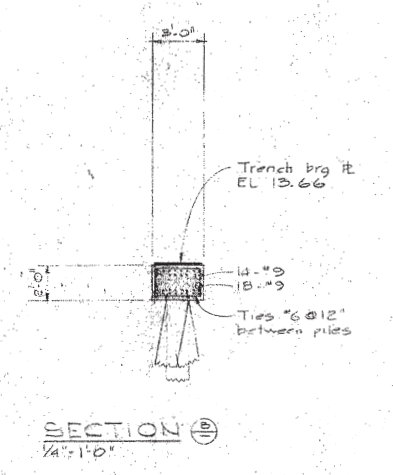
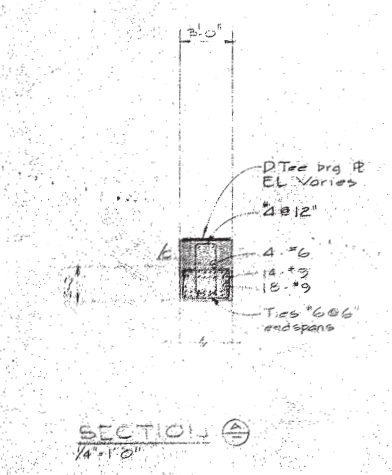
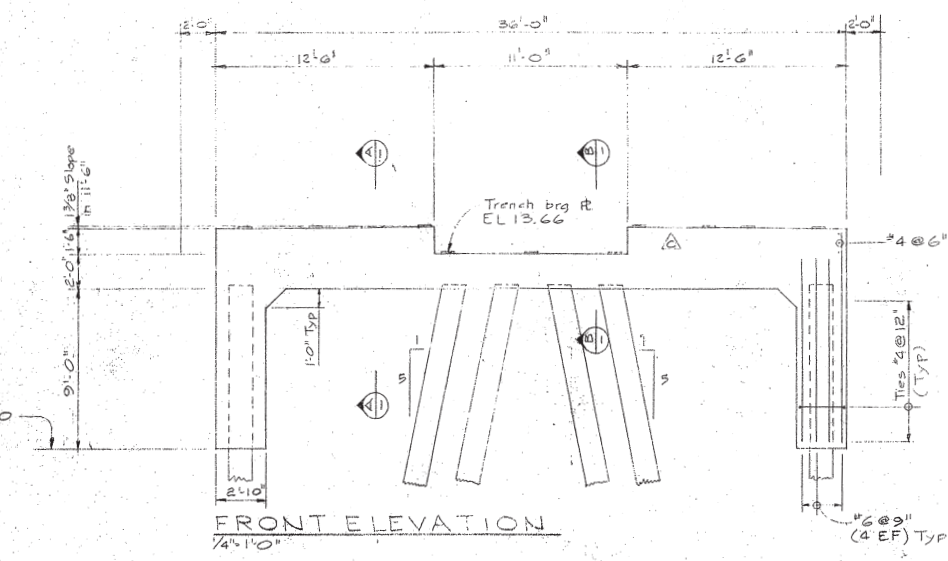
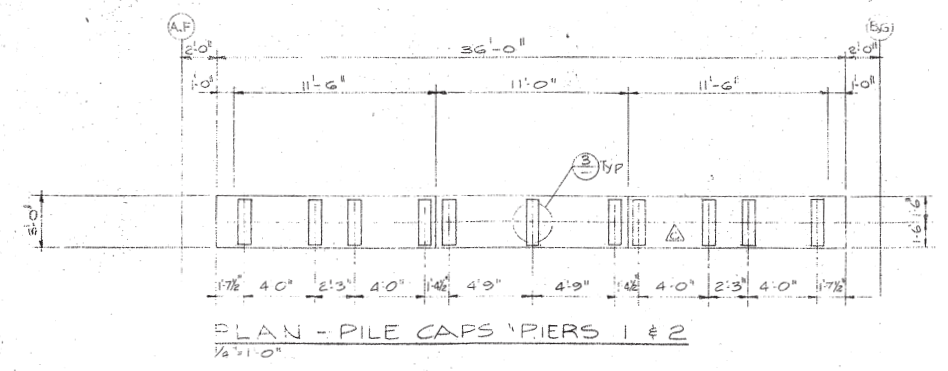
Drawing title
WHARF
PIER 1, 2 & CROSS PIER
PILE CAPS
CONC OUTLINE & REINF

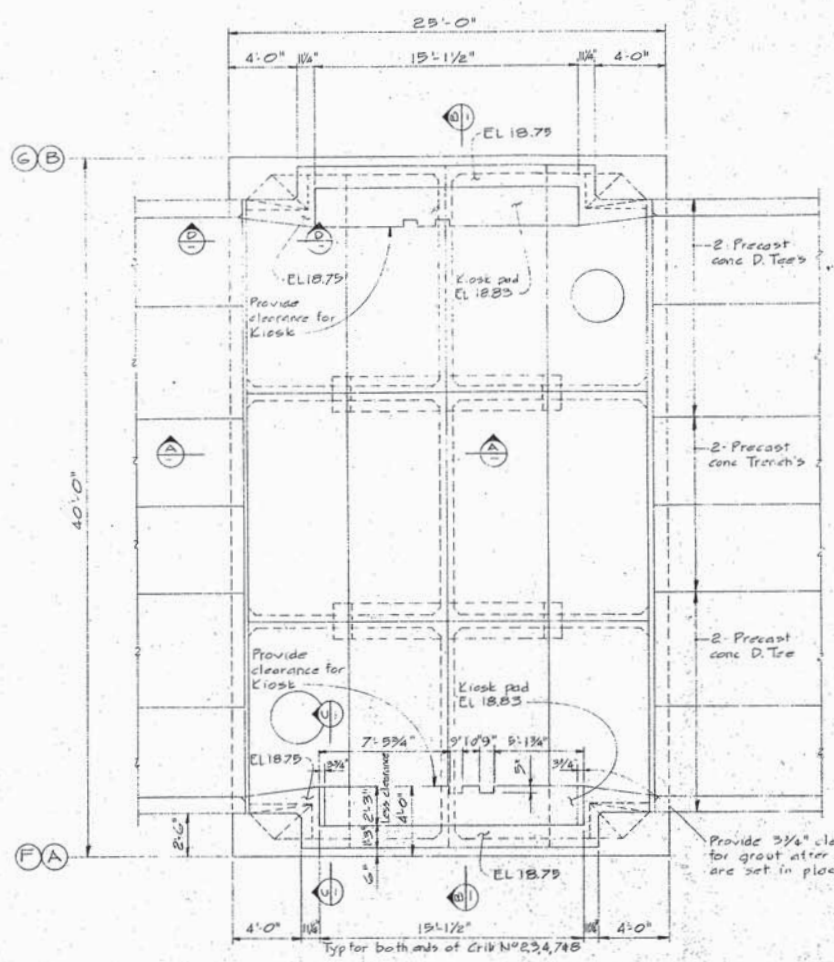
Designed by
Date
Drawn by H.T. + TERRY DE CARTER-DESIGNER
Date
Reviewed by
Date
Approved by
Date

Tender
D.P.W. Project Manager / Administrateur de projets M.T.P.
project number

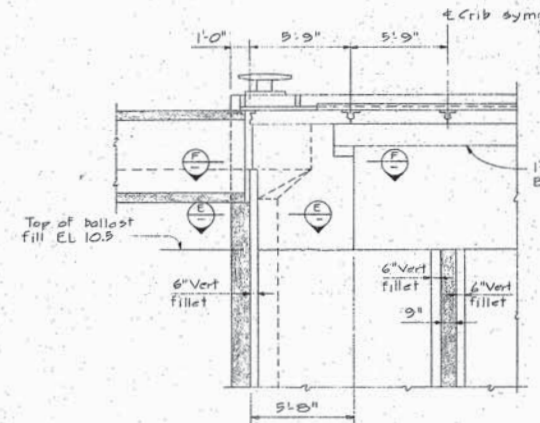
89323

Drawing no. S 10

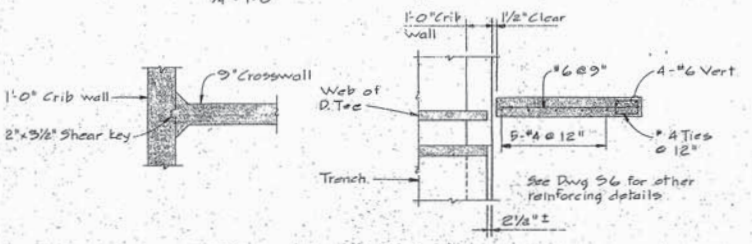




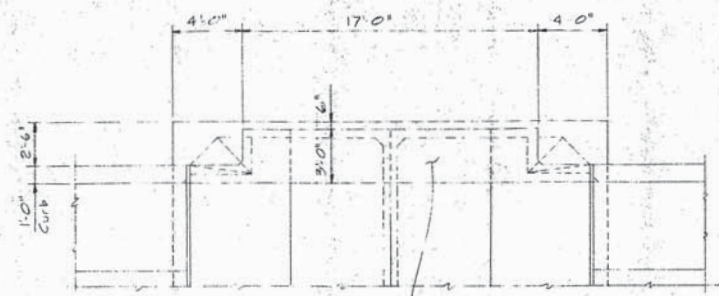
TYPICAL DECK PLAN FOR CRIBS WITH KIOSKS
1/4" = 1'-0"



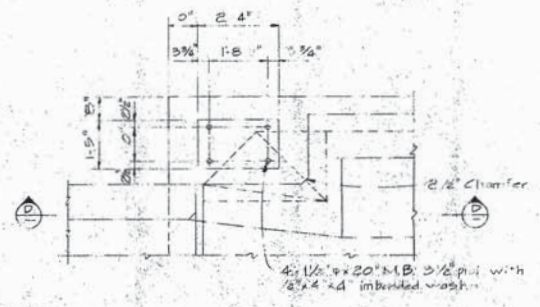
SECTION A-A
1/4" = 1'-0"



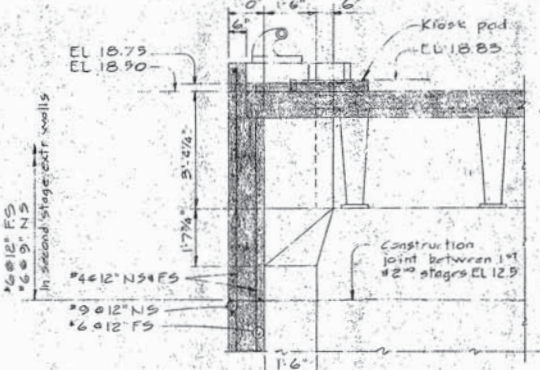
SECTION B-B
Typical between base of D. Tee & top of cross wall
1/8" = 1'-0"



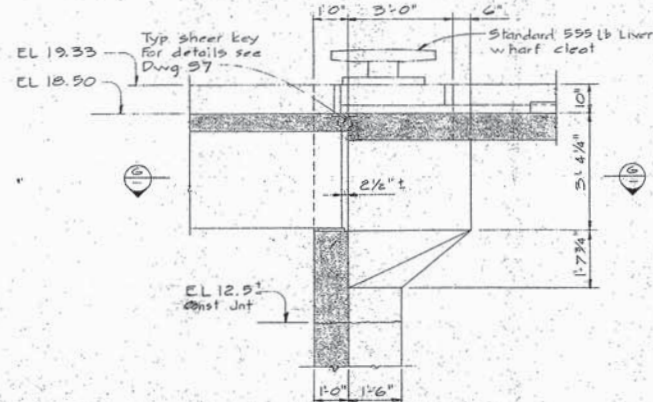
TYPICAL DECK PLAN FOR CRIBS WITHOUT KIOSKS
1/4" = 1'-0"



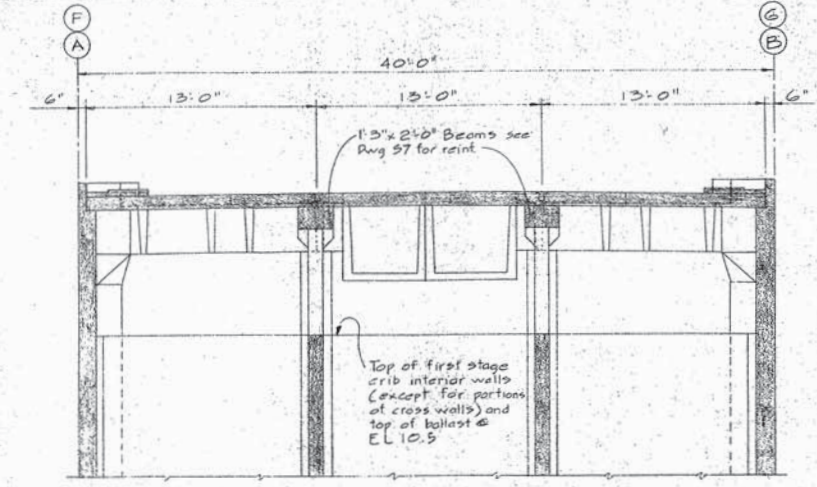
PLAN VIEW OF TYP CLEAT LOCATION ON CRIBS
1/2" = 1'-0"



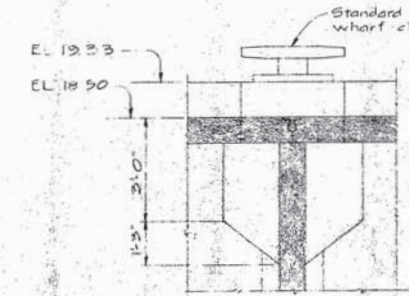
SECTION C-C
1/2" = 1'-0"



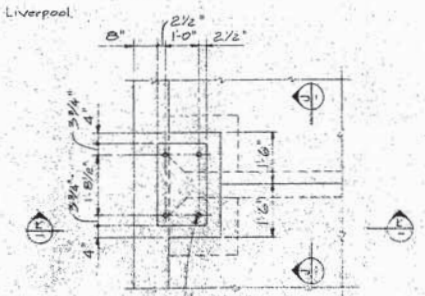
SECTION D-D
1/2" = 1'-0"



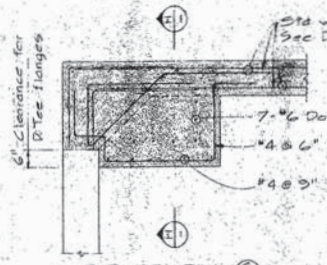
SECTION E-E
1/4" = 1'-0"



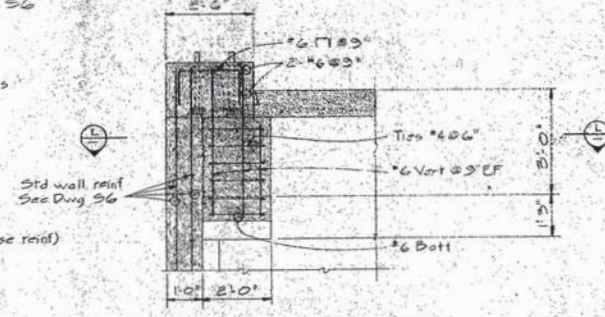
SECTION F-F
1/2" = 1'-0"



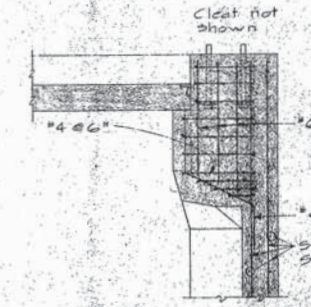
PLAN OF CLEAT LOCATION ON WEST SIDE OF CRIBS N'S 5 & 9
1/2" = 1'-0"



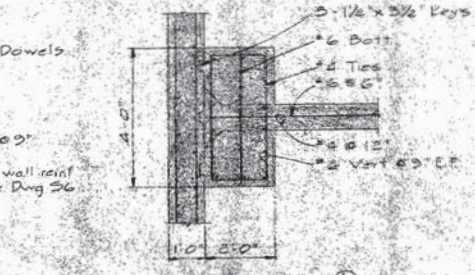
SECTION G-G (Typ cleat base reinf)
(Typ. between bottom of D. Tee & base of deck slabs)
1/2" = 1'-0"



SECTION H-H
1/2" = 1'-0"



SECTION I-I
1/2" = 1'-0"



SECTION J-J
1/2" = 1'-0"

NOTE
All bearing surfaces for deck panels to be screeded 3/8" to 1/2" low to provide for a sand cement leveling mortar.
For details of kiosks see Dwg E4