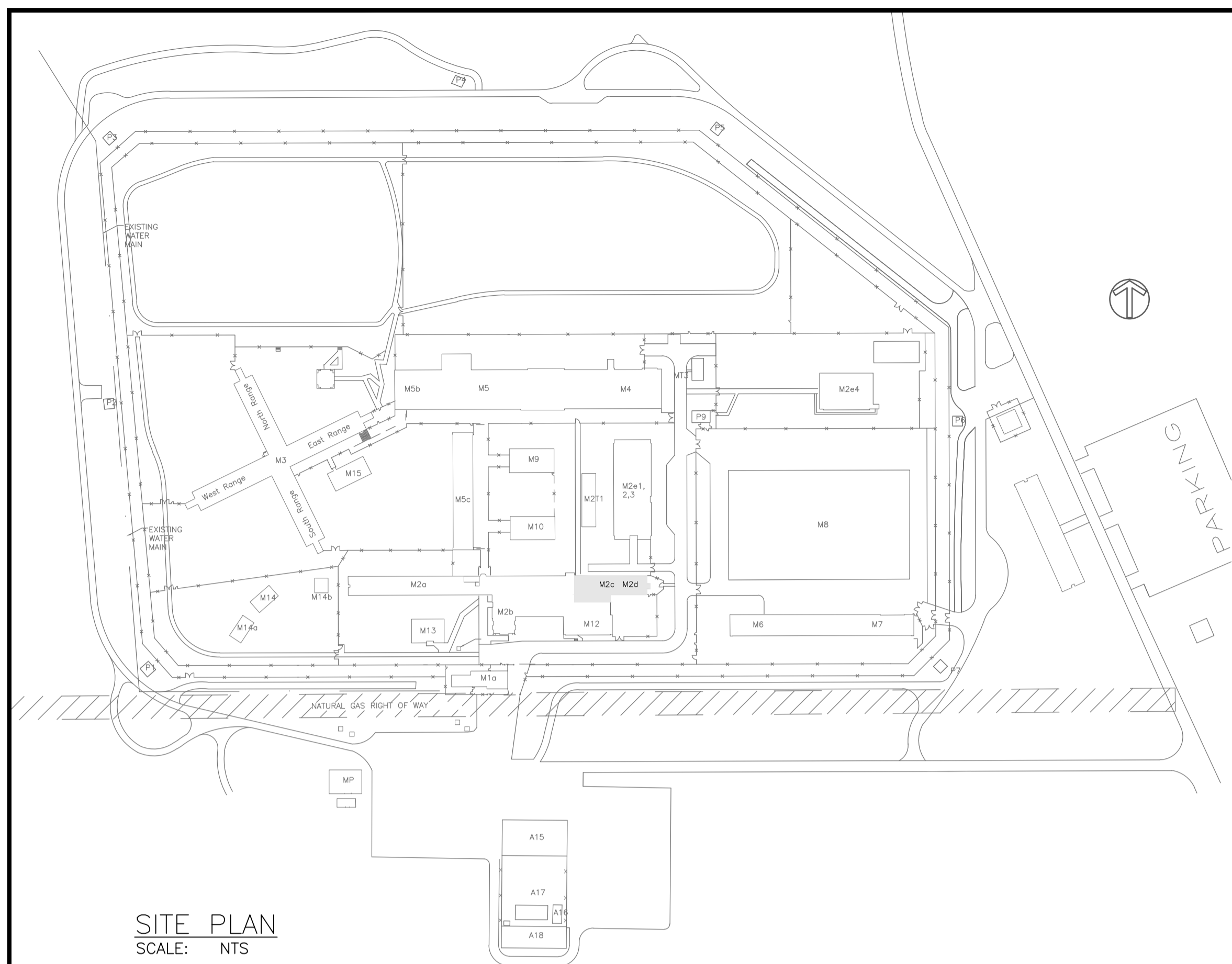


GENERAL NOTES:

- CUT CONCRETE USING TECHNIQUES TO MINIMIZE AIRBORNE DUST. WET WITH SPRAY BOTTLE, VACUUM WHILE CUTTING OR USE OTHER ACCEPTABLE TECHNIQUE TO DEPARTMENTAL REPRESENTATIVE SATISFACTION. REMOVE DUST AS IT IS CREATED. VACUUM AT END OF EACH WORK DAY TO REMOVE DUST CREATED THROUGHOUT THE WORK DAY.
- PERFORM PATCHING OPERATIONS TO MINIMIZE SANDING AND THE CREATION OF AIRBORNE DUST. TROWEL IN PATCHING MATERIAL TO MINIMIZE SANDING. REMOVE AIRBORNE DUST AS IT IS CREATED BY VACUUM OR OTHER ACCEPTABLE TECHNIQUE.
- WHERE CEILING ARE DROPPED, CONCEAL WIRING ABOVE THEM. ACCESS TO DROPPED CEILING IS BY ACCESS PANEL OR BY DROPPING RECESSED LIGHT FIXTURES DOWN.
- WHERE WALLS ARE PENETRATED ABOVE DROPPED CEILING CLOSE UP OPENINGS. WHERE WALLS ARE FIRE RATED, USE FIRE STOPPING MATERIAL TO SEAL OPENINGS TO SUIT.
- SEALANT TO BE PICK-PROOF SECURITY SEALANT AS SPECIFIED IN SPECIFICATION 07 92 00.
- ALL RECEPTABLE TYPES TO BE USED ARE SPECIFIED IN ELECTRICAL SPECIFICATION.
- WHERE CONDUITS ARE RUN ON THE CEILING IN THE CORRIDORS BETWEEN CELLS, FIX THE CONDUITS TO THE UNDERSIDE OF EACH PRE-CAST CONCRETE BEAM. USE TWO HOLE STRAPS TO SUPPORT THE CONDUIT ON EACH SIDE OF EACH BEAM. PROVIDE UNISTRUT IN THE MIDDLE BETWEEN EVERY TWO BEAMS TO PROPERLY SUPPORT THE CONDUITS. ATTACH TO THE UNDERSLAB. MOUNT ALL JUNCTION BOXES ON THE BEAMS.
- WHERE CONDUITS ARE RUN ON THE WALLS IN THE CORRIDORS BETWEEN CELLS, FIX THE CONDUITS AT MAXIMUM 1200MM (4'-0") CENTERS. USE TWO HOLE STRAPS.
- CONDUIT RUN INSIDE CELLS SHALL BE FIXED ON 600MM (2'-0") CENTERS WITH TWO HOLE STRAPS. ALL NEW CONDUITS IN THE CELLS TO RUN PARALLEL TO EXISTING CONDUITS WITHOUT CROSSING/OVERLAPPING THEM.
- SEAL IN BEHIND ALL CONDUITS IN CELLS BY TROWELLING IN THE PICK-PROOF SECURITY SEALANT. FOLLOWING INSTALLATION PAINT INTERIOR.
- SEAL CONDUIT PENETRATIONS THROUGH WALLS INTO CELLS FROM CORRIDOR OUTSIDE CELLS. DRILL HOLES ONLY SLIGHTLY OVERSIZED. DO NOT KNOCK OUT LARGE OPENINGS. GET APPROVED BY DEPARTMENTAL REPRESENTATIVE. SEAL WITH PICK-PROOF SECURITY SEALANT.
- TORX HEAD TAMPER PROOF SCREWS WITH CENTRE PIN REJECT TO BE USED IN CELLS FOR CONDUIT FIXINGS AND BOX COVER PLATES ETC. AND REGULAR ROBERTSON HEAD ELSEWHERE.
- SEAL IN AROUND ALL NEW AND EXISTING RE-INSTALLED LIGHTING FIXTURES IN CELLS AND CORRIDORS WITH PICK-PROOF SECURITY SEALANT.
- CONDUITS IN INMATE ACCESSIBLE AREAS TO BE RIGID GALVANIZED STEEL. CONDUITS IN CONTROL POST AND OTHER AREAS NOT ACCESSIBLE BY INMATES TO BE EMT.
- CONTRACTOR TO CONFIRM NAMING CONVENTION FOR SWITCHING PANELS AND POWER PANELS CIRCUITS WITH DEPARTMENTAL REPRESENTATIVE AND INSTITUTION PRIOR LABELING.
- ALLOW FOR ARC FLASH AND SHOCK HAZARD WARNING LABELS TO BE PUT ON ALL NEW PANELS.
- PERFORM X-RAYS BEFORE ANY CUTTING, CORING AND PATCHING THE FLOOR SLABS AND WALLS TO AVOID ANY DAMAGE TO EXISTING INSTALLATIONS WITHIN THE SLAB AND WALLS



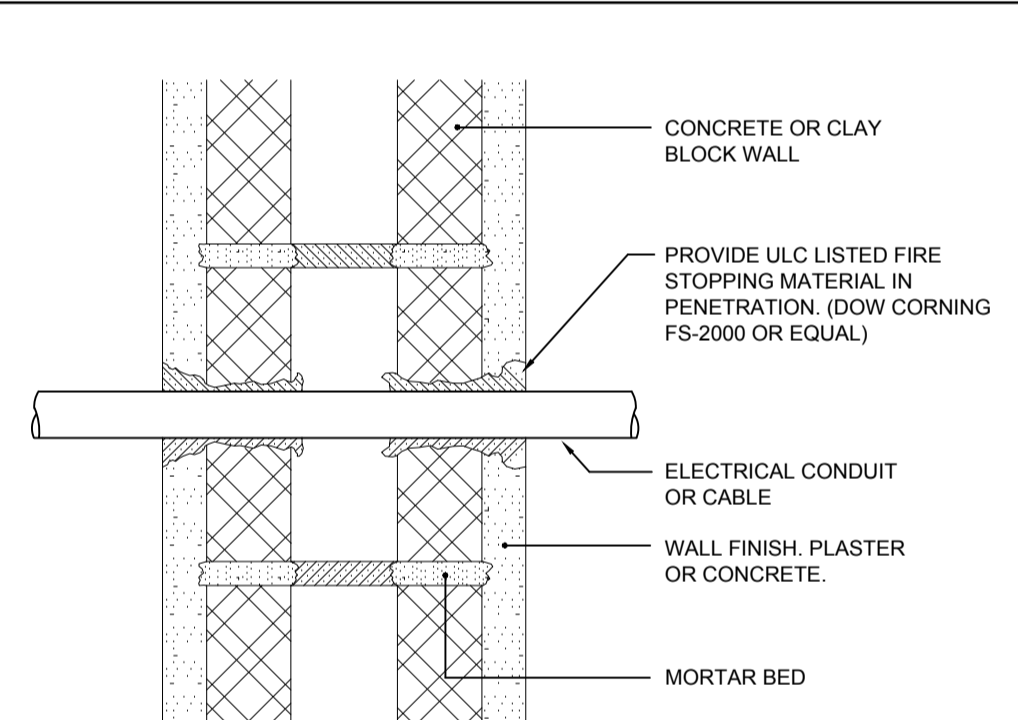
SITE PLAN
SCALE: NTS

ELECTRICAL DRAWING LIST

- E100 SITE PLAN, LEGEND, DRAWING LIST AND DETAILS
- E107 M2d 2ND LEVEL FLOOR PLAN - POWER/LIGHTING LAYOUT
- E108 M2c MAIN LEVEL FLOOR PLAN - POWER/LIGHTING LAYOUT
- E119 M2c & M2d - PANEL 'EH' SCHEDULE/SINGLE LINE DIAGRAM
- E120 M2c/M2d ROOF PLAN - POWER/LIGHTING LAYOUT

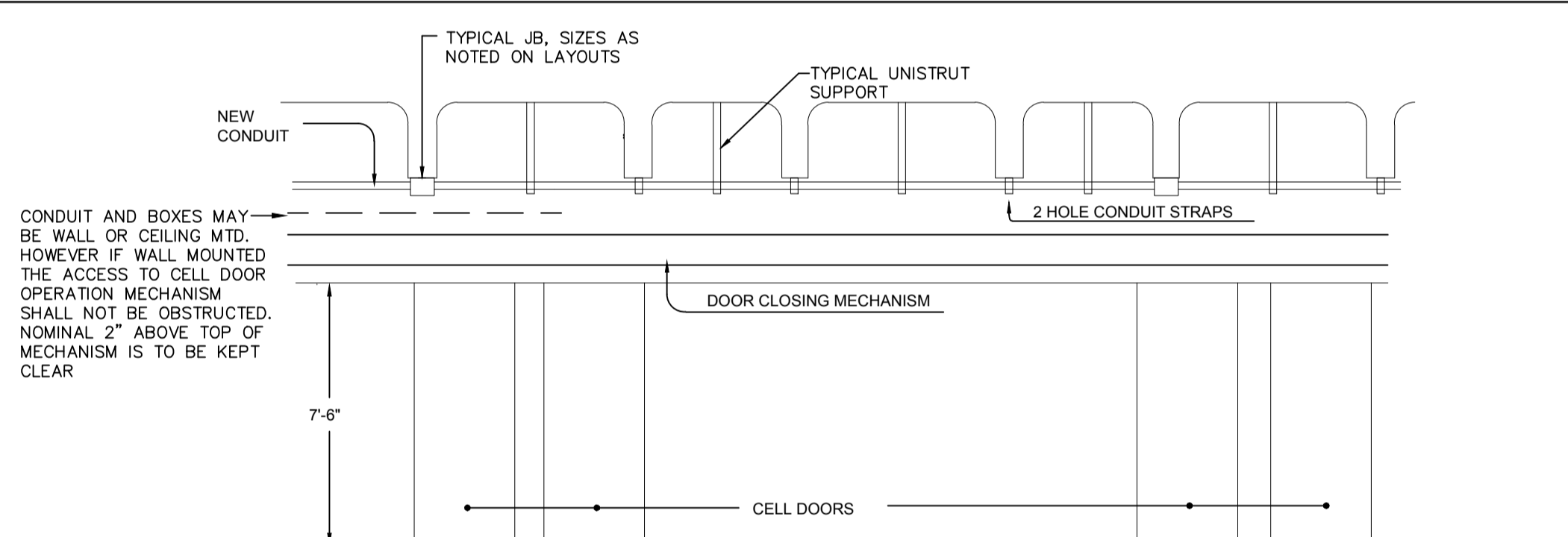
ELECTRICAL SYMBOL LEGEND

SINGLE LINE	POWER
FEEDER/CONDUCTOR	DUPLEX RECEPTACLE
BUSBAR/CDP	FOUR PLEX RECEPTACLE
POWER CIRCUIT BREAKER (VACUUM OR SF6)	ABOVE COUNTER DUPLEX RECEPTACLE
DRAW OUT BREAKER	ABOVE COUNTER FOUR PLEX RECEPTACLE
BREAKER	5-20R RECEPTACLE (T-SLOT)
KEY INTERLOCK SWITCH	GROUND FAULT INTERRUPTER
GANG OPERATED LOAD BREAK SWITCH	DUPLEX RECEPTACLE
MOTORIZED GANG OPERATED LOAD BREAK SWITCH	GROUND FAULT INTERRUPTER
GANG OPERATED DISCONNECT SWITCH	FOUR PLEX RECEPTACLE
FUSE	EQUIPMENT CONNECTION
FUSE	JUNCTION BOX
RELAY	GROUND BUS
CONTACT NO	PANEL
CONTACT NC	CONDUIT RUN UP
CABLE POTHEAD	CONDUIT RUN DOWN
LIGHTNING ARRESTER	DISCONNECT SWITCH
GROUND	
METERING TRANSFORMER	
SERVICE PROVIDER METER	
DIGITAL METERING UNIT	
OVERCURRENT GROUND RELAY	
OVERCURRENT PHASE RELAY	
TRANSFORMER (DRY TYPE)	
DELTA-WYE TRANSFORMER	
DELTA-ZIGZAG HARMONIC MITIGATION TRANSFORMER	
GENERATOR	
TRANSFER SWITCH	
PANEL	
LOW VOLTAGE PANEL	
LSIG LONG, SHORT, INSTANTANEOUS, & GROUND TRIP UNIT	
FT FEED THROUGH	
TD TIME DELAY	
LV LOW VOLTAGE LIGHTING RELAY CABINET	
PS PHASE SHIFT	
	LIGHTING
	EMERGENCY/NIGHT LIGHT LUMINAIRE
	1'x4' SURFACE FLUORESCENT LUMINAIRE
	1'x4' RECESSED FLUORESCENT LUMINAIRE
	1'x4' SUSPENDED FLUORESCENT LUMINAIRE
	1'x1' SURFACE FLUORESCENT LUMINAIRE
	1'x1' RECESSED FLUORESCENT LUMINAIRE
	2'x2' SURFACE FLUORESCENT LUMINAIRE
	2'x2' RECESSED FLUORESCENT LUMINAIRE
	2'x4' SURFACE FLUORESCENT LUMINAIRE
	2'x4' RECESSED FLUORESCENT LUMINAIRE
	FLUORESCENT STRIP LIGHT
	SURFACE MOUNTED DOWN LIGHT
	RECESSED DOWN LIGHT
	WALL MOUNTED DOWN LIGHT
	SINGLE POLE TOGGLE SWITCH
	LOW VOLTAGE SWITCH
	MULTI POLE SWITCH
	PHOTO ELECTRIC CELL
	ABBREVIATIONS
	AC ABOVE COUNTER
	D INDICATES CIRCUIT TO BE DEDICATED
	E EXISTING DEVICE
	N NEW DEVICE
	NL NIGHT LIGHT
	R EXISTING DEVICE TO BE REMOVED
	REL RELOCATE EXISTING DEVICE TO NEW LOCATION AS SHOWN
	RM EXISTING DEVICE TO REMAIN
	RP EXISTING DEVICE TO BE REPLACED WITH NEW
	RR REMOVE EXISTING DEVICE AND RE-INSTALL IN SAME LOCATION. REWIRE TO SUIT.
	WP WEATHER PROOF
	S SURFACE MOUNTED
	WG WIRE GUARD
	GFI GROUND FAULT INTERRUPTER

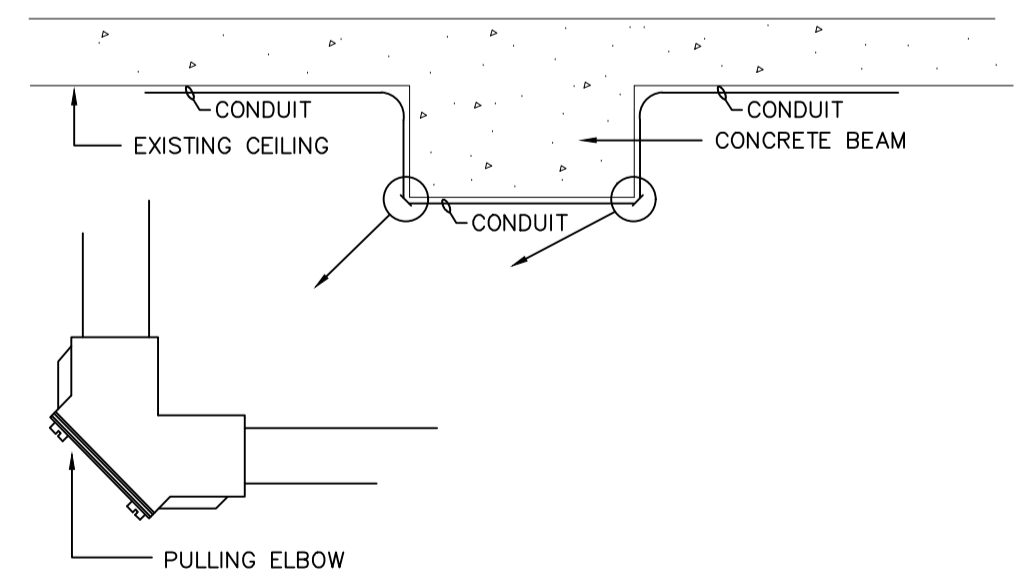


NOTE:
1. THIS DETAIL IS FOR CONDUIT PENETRATIONS IN SPACES NOT ACCESSIBLE TO INMATES ONLY. FOR AREAS ACCESSIBLE BY INMATES, PROVIDE SECURITY CAULKING. REFER TO GENERAL NOTE #11 ABOVE ON THIS DRAWING.

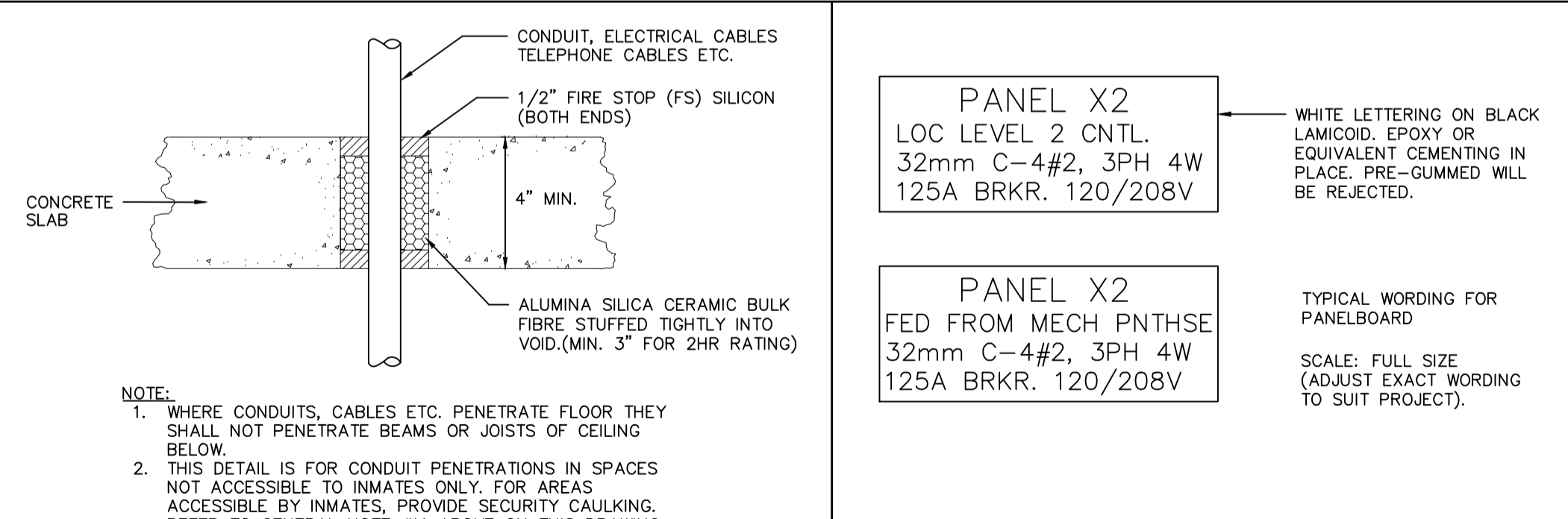
DETAIL #1: TYPICAL FIRE STOPPING DETAIL FOR HORIZONTAL PENETRATION THROUGH WALLS
N.T.S.



DETAIL #2: TYPICAL ELEVATION IN CORRIDOR-CELL BLOCKS
N.T.S.

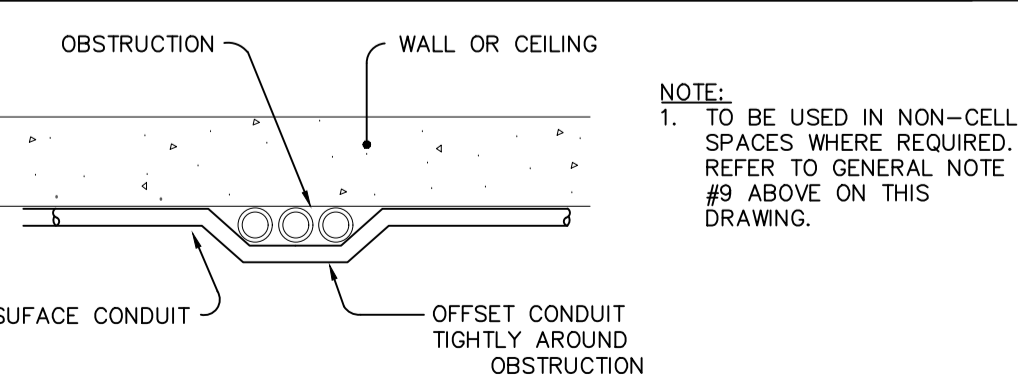


DETAIL #3: TYPICAL WIRING DETAIL (CONDUIT RUN AROUND COLUMNS.)
N.T.S.



DETAIL #4: TYPICAL FIRE STOPPING DETAIL FOR VERTICAL RISERS THROUGH FLOORS
N.T.S.

DETAIL #5: TYPICAL LABELING DETAILS PANELBOARDS & DISTRIBUTION PANEL BREAKERS



DETAIL #6: TYPICAL SURFACE CONDUIT INSTALLATION DETAIL.
N.T.S.

Revision	Description/Description	Date
2	RE-ISSUED FOR TENDER	2020.12.14
1	ISSUED FOR TENDER	2020.11.18

CORRECTIONAL SERVICE CANADA

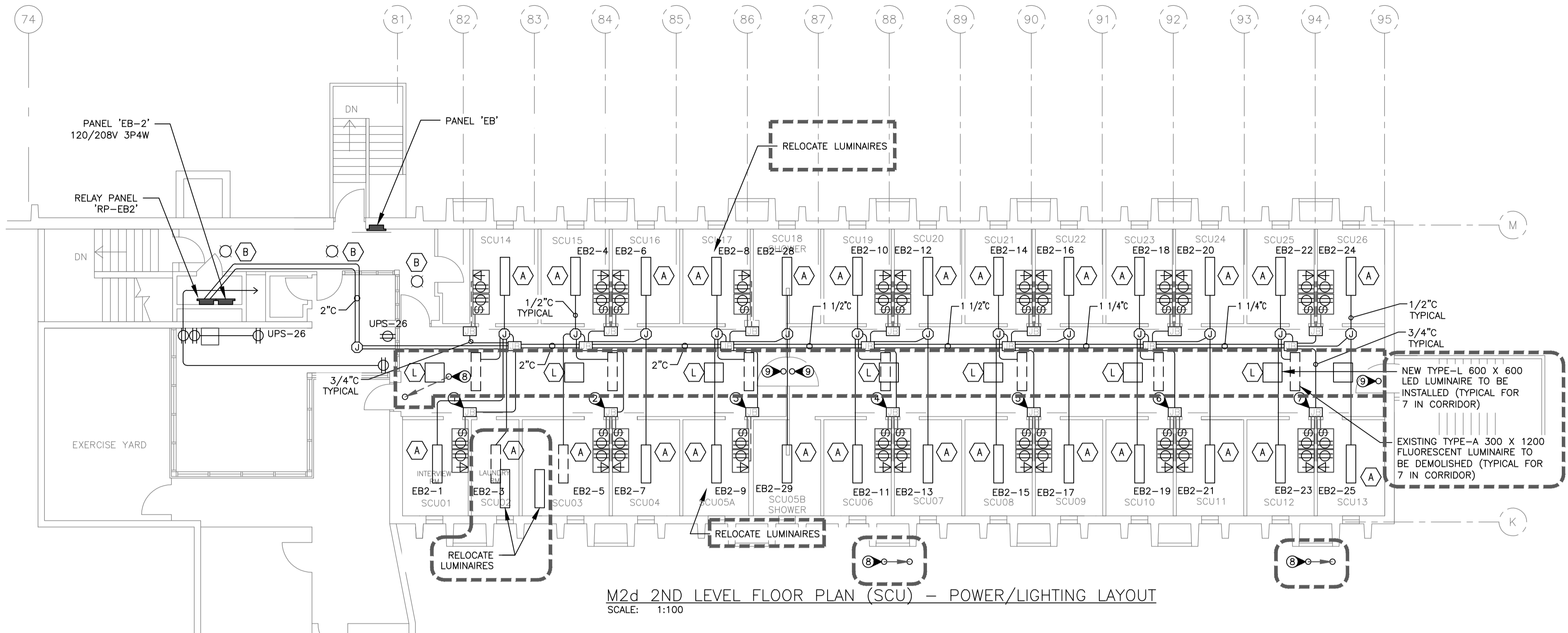
Project title/Titre du projet
MATSQUI INSTITUTION
ABBOTSFORD, BC
33344 KING ROAD
MATSQUI LIVING UNIT 5
UNDERSLAB SUPPLY VENTING

Consultant Signature Only
Designed by/Concept par Norman Wong
Drawn by/Dessiné par Thang Cao
PWGSC Project Manager/Administrateur de Projets TPSGC Ken Wendt
Regional Manager, Architectural and Engineering Services Gestionnaire régionale, Services d'architectural et de génie, TPSGC Preetipal Paul
Drawing title/Titre du dessin

SITE PLAN, LEGEND, DRAWING LIST AND DETAILS

Project No./No. du projet R.11315.001	Sheet/Feuille E100 1 of 5	Revision no./Lo Révision no. 2
---	--	--





PANEL 'EB-2'				EXISTING			
DESCRIPTION	kw	BKR	CIRCUIT NO.	BKR	kw	DESCRIPTION	
RECEPTACLE SCU 01		15	1	2	15	RECEPTACLE SCU 14	
RECEPTACLE SCU 02		15	3	4	15	RECEPTACLE SCU 15	
RECEPTACLE SCU 03		15	5	6	15	RECEPTACLE SCU 16	
RECEPTACLE SCU 04		15	7	8	15	RECEPTACLE SCU 17	
RECEPTACLE SCU 05A		15	9	10	15	RECEPTACLE SCU 18	
RECEPTACLE SCU 06		15	11	12	15	RECEPTACLE SCU 19	
RECEPTACLE SCU 07		15	13	14	15	RECEPTACLE SCU 20	
RECEPTACLE SCU 08		15	15	16	15	RECEPTACLE SCU 21	
RECEPTACLE SCU 09		15	17	18	15	RECEPTACLE SCU 22	
RECEPTACLE SCU 10		15	19	20	15	RECEPTACLE SCU 23	
RECEPTACLE SCU 11		15	21	22	15	RECEPTACLE SCU 24	
RECEPTACLE SCU 12		15	23	24	15	RECEPTACLE SCU 25	
RECEPTACLE SCU 13		15	25	26	15	NIGHT LIGHT LEFT	
NIGHT LIGHT RIGHT		15	27	28	15	SHOWER SCU 18	
SHOWER SCU 5B		15	29	30	15	CORRIDOR LTG	
SPARE		15	31	32	15	CORRIDOR LTG	
SPARE		15	33	34	15	CORRIDOR ENTRANCE LTG	
SPARE		15	35	36	-	-	
SPARE		15	37	38	-	-	
SPARE		15	39	40	-	-	
SPARE		15	41	42	-	-	
-		-	43	44	-	-	
-		-	45	46	-	-	
-		-	47	48	15	DOOR LOCK AND BELL	
-		-	49	50	15	DDC- GUARD BUBBLE CEILING	
-		-	51	52	15	CONTROL POST LTG + EMERGENCY	
-		-	53	54	15	CONTROL POST PLUGS	
-		-	55	56	15	CCTV PANEL	
-		-	57	58	15	CONTROL POST PLUGS	
-		-	59	60	15	EXIT & EMERGENCY LTG.	
TOTAL	x					TOTAL	x

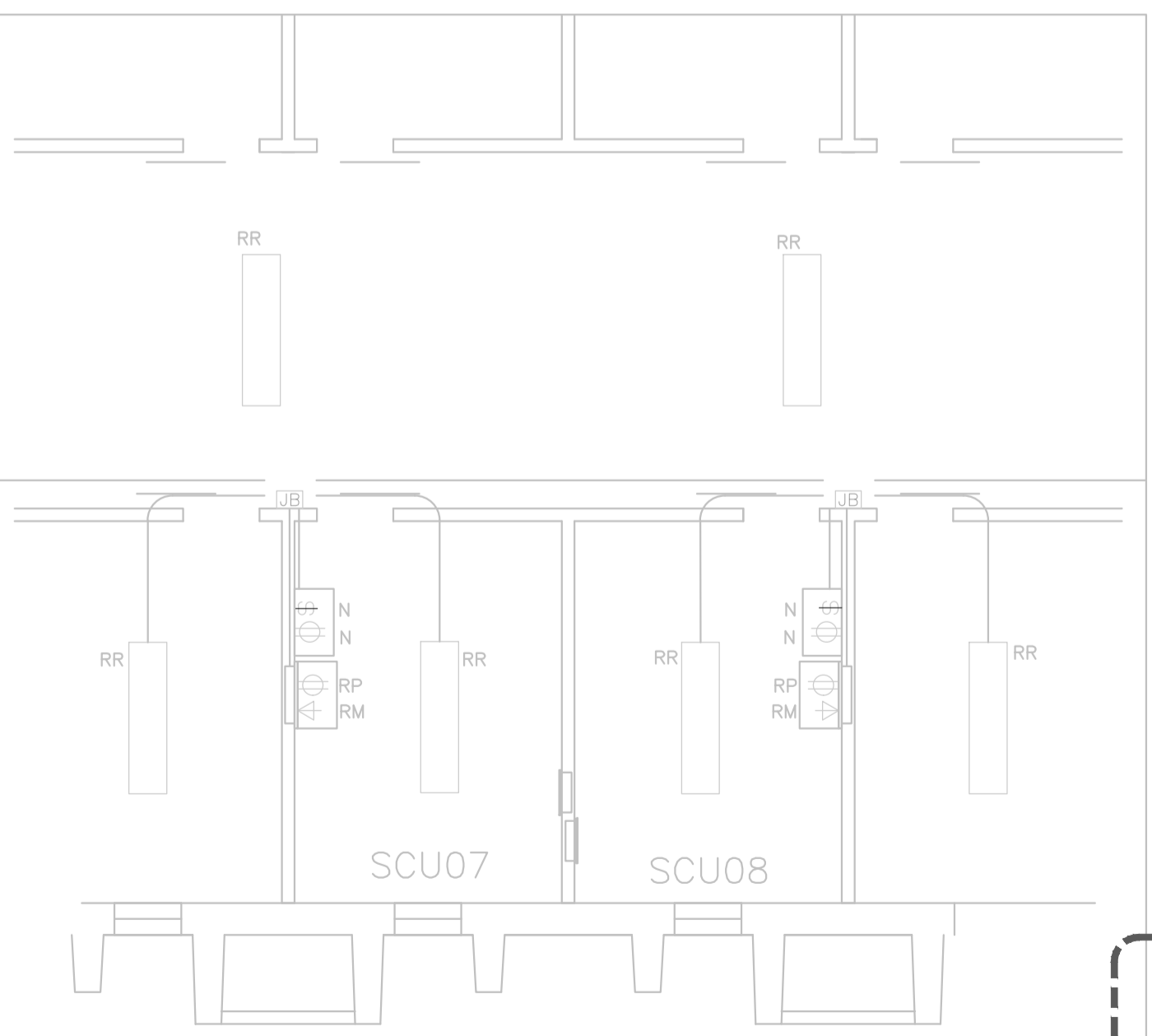
RELAY PANEL 'RP-EB2'				EXISTING			
DESCRIPTION	CCT. #	RELAY NO.	CCT. #	DESCRIPTION			
RECEPTACLE SCU 01	EB2-1	1	2	EB2-2	RECEPTACLE SCU 14		
RECEPTACLE SCU 02	EB2-3	3	4	EB2-4	RECEPTACLE SCU 15		
RECEPTACLE SCU 03	EB2-5	5	6	EB2-6	RECEPTACLE SCU 16		
RECEPTACLE SCU 04	EB2-7	7	8	EB2-8	RECEPTACLE SCU 17		
RECEPTACLE SCU 05A	EB2-9	9	10	EB2-10	RECEPTACLE SCU 18		
RECEPTACLE SCU 06	EB2-11	11	12	EB2-12	RECEPTACLE SCU 19		
RECEPTACLE SCU 07	EB2-13	13	14	EB2-14	RECEPTACLE SCU 20		
RECEPTACLE SCU 08	EB2-15	15	16	EB2-16	RECEPTACLE SCU 21		
RECEPTACLE SCU 09	EB2-17	17	18	EB2-18	RECEPTACLE SCU 22		
RECEPTACLE SCU 10	EB2-19	19	20	EB2-20	RECEPTACLE SCU 23		
RECEPTACLE SCU 11	EB2-21	21	22	EB2-22	RECEPTACLE SCU 24		
RECEPTACLE SCU 12	EB2-23	23	24	EB2-24	RECEPTACLE SCU 25		
RECEPTACLE SCU 13	EB2-25	25	26	EB2-26	NIGHT LIGHT LEFT		
NIGHT LIGHT RIGHT	EB2-27	27	28	EB2-28	SHOWER SCU 18		
SHOWER SCU 5B	EB2-29	29	30	EB2-30	CORRIDOR LTG		
SPARE	EB2-31	31	32	EB2-32	CORRIDOR LTG		
SPARE	EB2-33	33	34	EB2-34	CORRIDOR ENTRANCE LTG		
SPARE	EB2-35	35	36				
SPARE	EB2-37	37	38				
SPARE	EB2-39	39	40				
SPARE	EB2-41	41	42				
TOTAL	x				TOTAL	x	



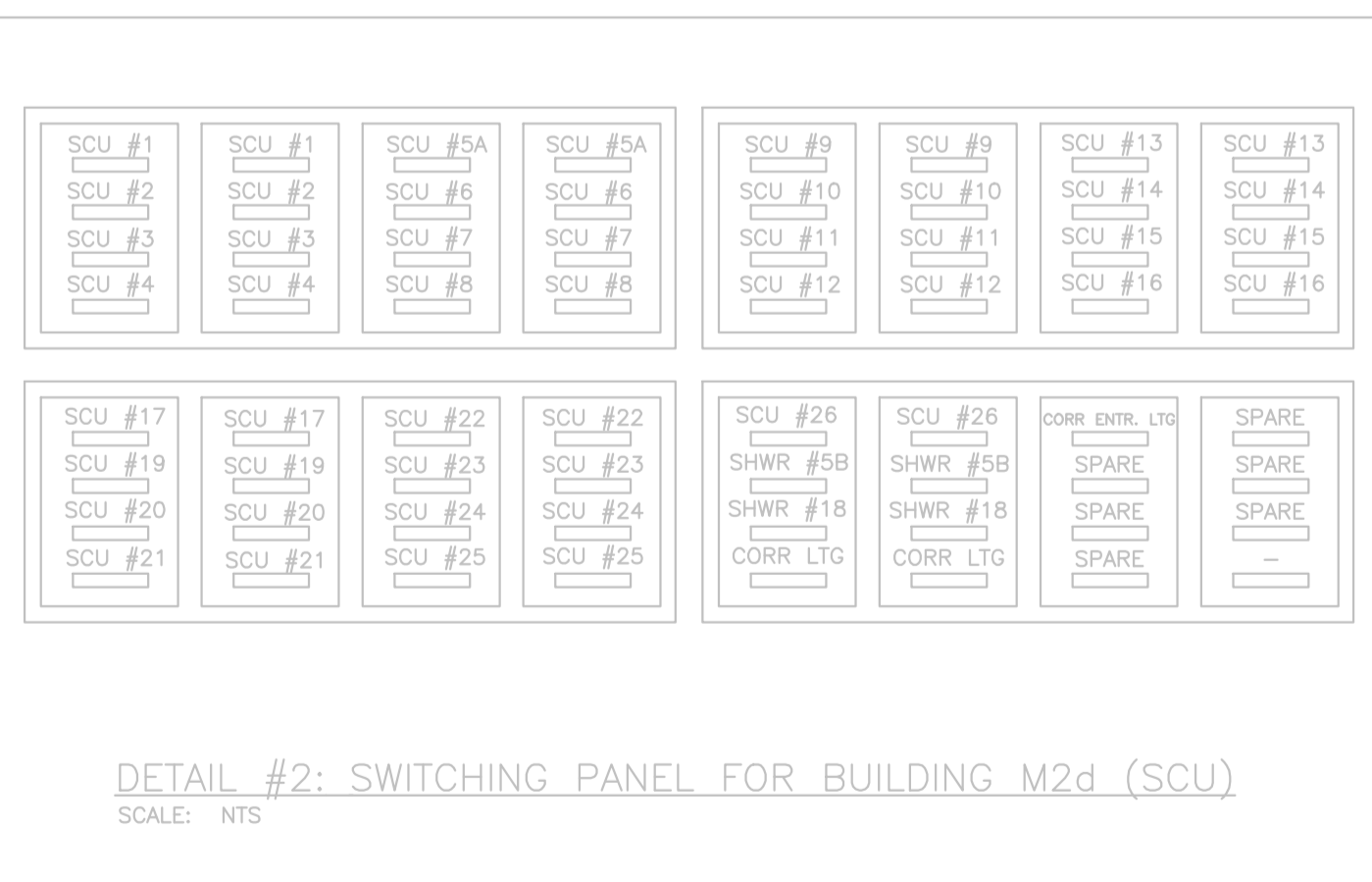
EXTERNAL VIDEO CAMERA RELOCATIONS

- DRAWING KEY NOTES:**
- 400mm x 400mm x 150mm JUNCTION BOX.
 - 350mm x 350mm x 150mm JUNCTION BOX.
 - 300mm x 300mm x 150mm JUNCTION BOX.
 - 250mm x 250mm x 150mm JUNCTION BOX.
 - 200mm x 200mm x 150mm JUNCTION BOX.
 - 150mm x 150mm x 150mm JUNCTION BOX.
 - RELOCATE EXISTING CAMERA TO ACCOMMODATE MECHANICAL INSTALLATION AND LINE OF SIGHT
 - EXISTING CAMERA TO REMAIN IN PLACE

- GENERAL NOTES:**
1. REMOVE 7 EXISTING TYPE-A FLUORESCENT LUMINAIRES IN CORRIDOR AND REPLACE WITH 7 NEW TYPE-L LED LUMINAIRES, USING EXISTING CIRCUITS.
 2. RELOCATE LUMINAIRES AS SHOWN ON MECHANICAL DRAWINGS TO FREE UP SPACE FOR MECHANICAL EQUIPMENT.
 3. RELOCATE EMERGENCY LIGHTS AS SHOWN ON MECHANICAL DRAWINGS TO FREE UP SPACE FOR MECHANICAL EQUIPMENT.
 4. SEAL IN AROUND ALL NEW AND RELOCATED LUMINAIRES WITH PICK-PROOF SECURITY SEALANT.
 5. REMOVE AND REPLACE CONDUIT AS SHOWN ON MECHANICAL DRAWINGS TO FREE UP SPACE FOR MECHANICAL EQUIPMENT.
 6. WHERE CONDUITS ARE RUN ON THE CEILING IN THE CORRIDORS BETWEEN CELLS, FIX THE CONDUITS TO THE UNDERSIDE OF EACH PRE-CAST CONCRETE BEAM. USE TWO HOLE STRAPS TO SUPPORT THE CONDUIT ON EACH SIDE OF EACH BEAM. PROVIDE UNISTRUT IN THE MIDDLE BETWEEN EVERY TWO BEAMS TO PROPERLY SUPPORT THE CONDUITS. ATTACH TO THE UNDERSLAB. MOUNT ALL JUNCTION BOXES ON THE BEAMS.
 7. WHERE CONDUITS ARE RUN ON THE WALLS IN THE CORRIDORS BETWEEN CELLS, FIX THE CONDUITS AT MAXIMUM 1200MM (4'-0") CENTERS. USE TWO HOLE STRAPS.
 8. CONDUIT RUN INSIDE CELLS SHALL BE FIXED ON 600MM (2'-0") CENTERS WITH TWO HOLE STRAPS. ALL NEW CONDUITS IN THE CELLS TO RUN PARALLEL TO EXISTING CONDUITS WITHOUT CROSSING/OVERLAPPING THEM.
 9. SEAL IN BEHIND ALL CONDUITS IN CELLS BY TROWELLING IN THE PICK-PROOF SECURITY SEALANT. FOLLOWING INSTALLATION, PAINT INTERIOR.
 10. SEAL CONDUIT PENETRATIONS THROUGH WALLS INTO CELLS FROM CORRIDOR OUTSIDE CELLS. DRILL HOLES ONLY SLIGHTLY OVERSIZED. DO NOT KNOCK OUT LARGE OPENINGS. GET APPROVED BY DEPARTMENTAL REPRESENTATIVE. SEAL WITH PICK-PROOF SECURITY SEALANT.
 11. TORX HEAD TAMPER PROOF SCREWS WITH CENTRE PIN REJECT TO BE USED IN CELLS FOR CONDUIT FIXINGS AND BOX COVER PLATES ETC. AND REGULAR ROBERTSON HEAD ELSEWHERE.
 12. CONDUITS IN INMATE ACCESSIBLE AREAS TO BE RIGID GALVANIZED STEEL CONDUITS IN CONTROL POST AND OTHER AREAS NOT ACCESSIBLE BY INMATES TO BE EMT.
 13. HIRE AND PAY FOR GENETEC/PIVOT3 CERTIFIED CONTRACTORS TO PERFORM ANY WORKS FOR SECURITY CAMERAS. HOULE ELECTRIC AND PALADIN SECURITY COMPANIES ARE KNOWN TO BE CERTIFIED AND THERE MAY BE OTHER CERTIFIED COMPANIES/CONTRACTORS AS WELL.



DETAIL #1: TYPICAL CELL PLAN
SCALE: NTS



DETAIL #2: SWITCHING PANEL FOR BUILDING M2d (SCU)
SCALE: NTS

NEW LUMINAIRE SCHEDULE						
TYPE	DESCRIPTION	CATALOGUE NO.	VOLT/BALLAST	LAMPS NO. TYPE (EACH)	MOUNTING	REMARKS
L	SURFACE MOUNT LED LUMINAIRE COMPLETE WITH LED NIGHT LIGHT. SUITABLE FOR SURFACE CONDUIT.	KENALL SDD2-9/9-25L40K-DCC-120-1/J-1-DLN	120V	-	LED + LED NIGHT LIGHT	PROVIDE 14 LUMINAIRES, 7 FOR EACH FLOOR.

* PRODUCTS SPECIFIED ARE MINIMUM ACCEPTABLE STANDARD.

Revision	Description/Description	Date
5	RE-ISSUED FOR TENDER	2020.12.14
4	ISSUED FOR TENDER	2020.11.18
C	ISSUED FOR 99% SUBMISSION	2020.10.02
B	ISSUED FOR 80% REVIEW	2020.09.24
A	ISSUED FOR 66% REVIEW	2020.09.18

Client/client
CORRECTIONAL SERVICE CANADA

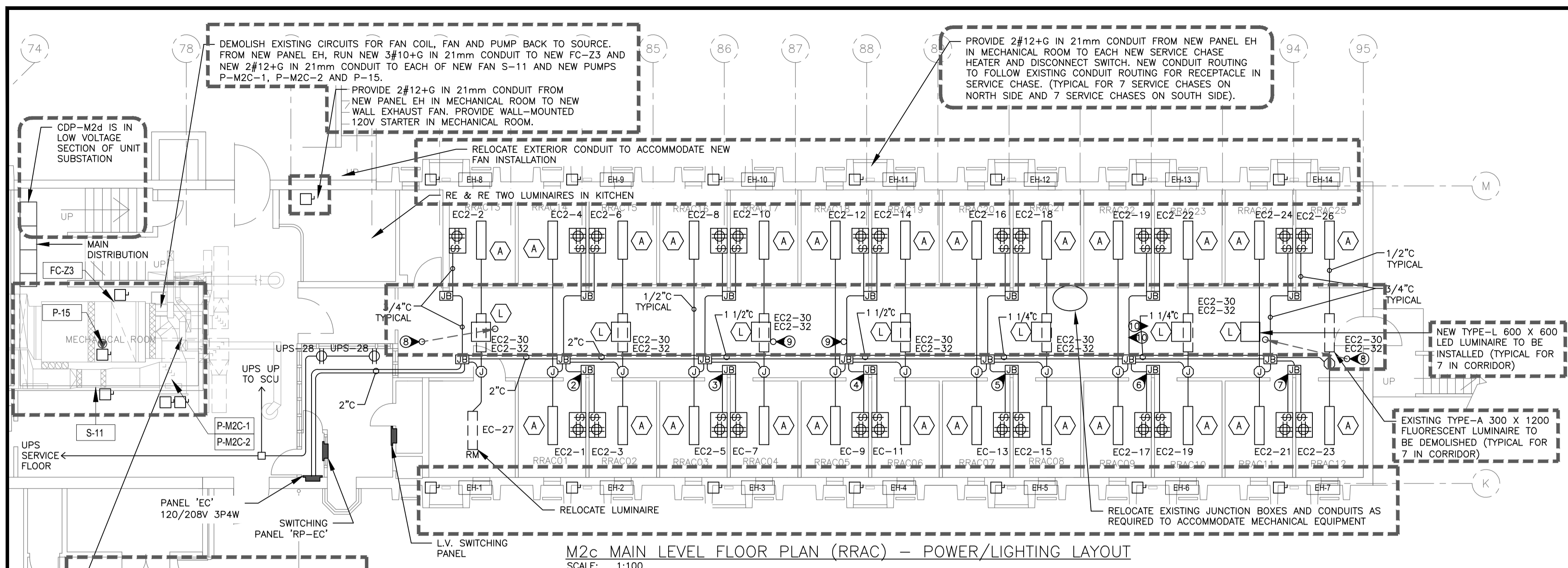
Project title/Titre du projet
MATSQUI INSTITUTION
 ABBOTSFORD, BC
 33344 KING ROAD
MATSQUI LIVING UNIT 5
 UNDERSLAB SUPPLY VENTING

Consultant Signature Only
 Designed by/Concept par
 Norman Wong
 Drawn by/Dessiné par
 Thang Cao
 PWGSC Project Manager/Administrateur de Projets TP5GC
 Ken Wendt
 Regional Manager, Architectural and Engineering Services
 Gestionnaire régionale, Services d'architectural et de génie, TP5GC
 Proestipai Fouli

Drawing title/Titre du dessin
M2d 2ND LEVEL FLOOR PLAN - POWER/LIGHTING LAYOUT

Project No./No. du projet	Sheet/Feuille	Revision no./La Révision no.
R.11315.001	E107 2 of 5	5





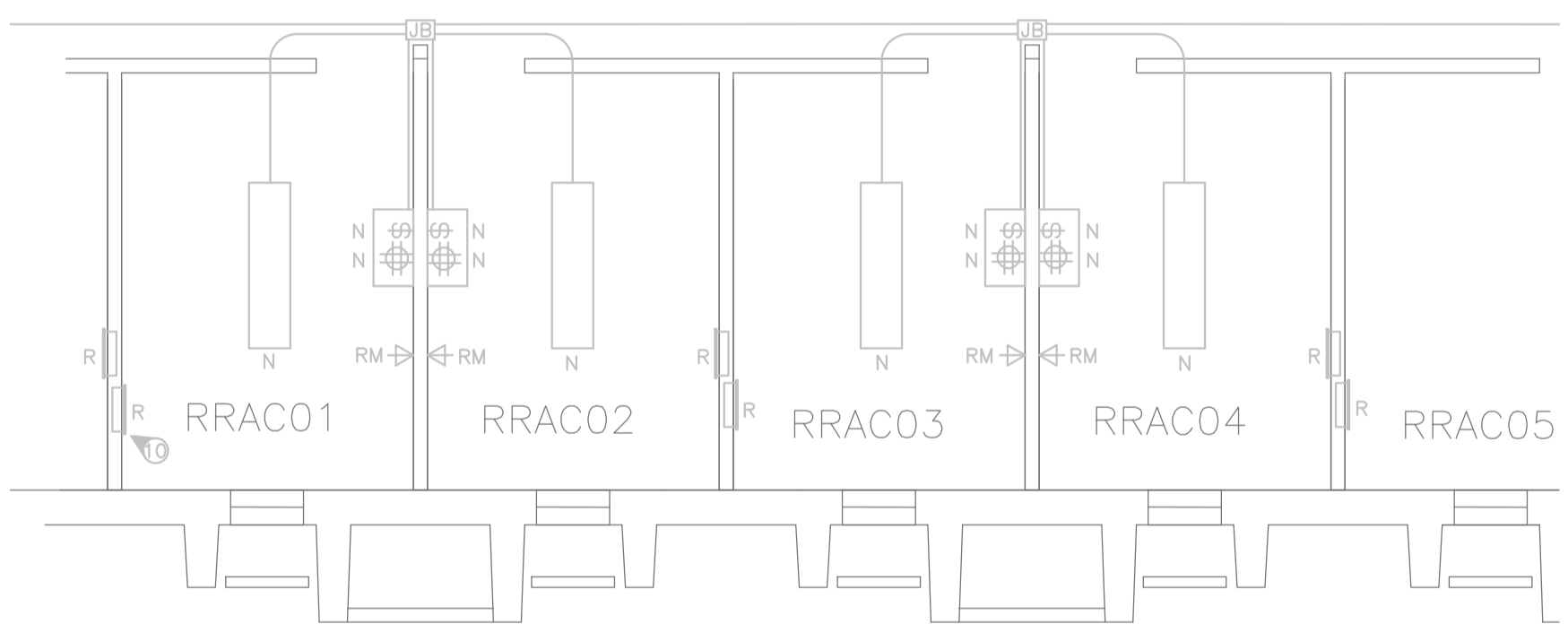
M2c MAIN LEVEL FLOOR PLAN (RRAC) - POWER/LIGHTING LAYOUT
SCALE: 1:100

PANEL 'EC' EXISTING

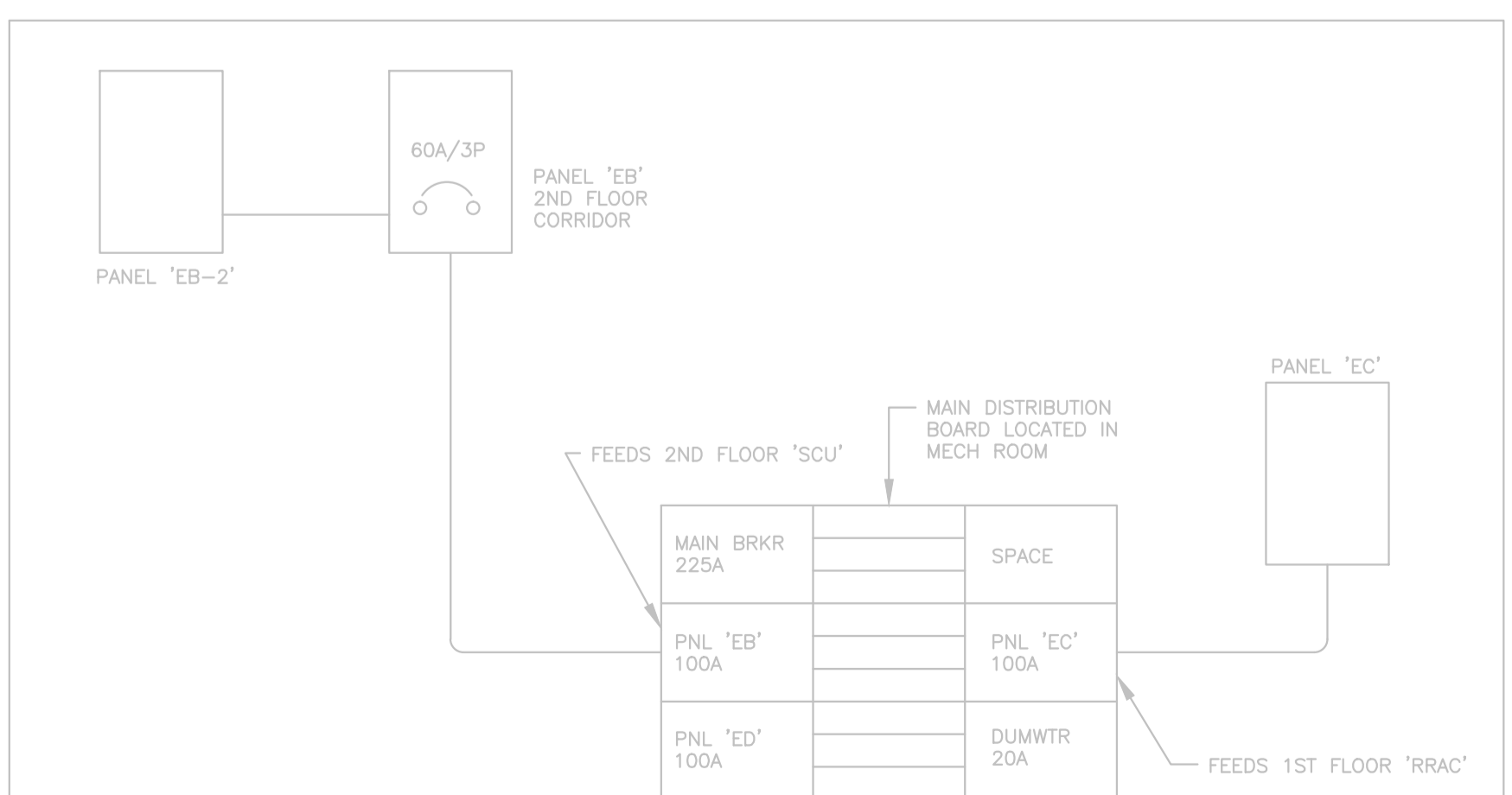
DESCRIPTION	KW	BKR	CIRCUIT NO.	BKR	KW	DESCRIPTION
RECEPTACLE RRAC 01	15	1	2	15		RECEPTACLE RRAC 13
RECEPTACLE RRAC 02	15	3	4	15		RECEPTACLE RRAC 14
RECEPTACLE RRAC 03	15	5	6	15		RECEPTACLE RRAC 15
RECEPTACLE RRAC 04	15	7	8	15		RECEPTACLE RRAC 16
RECEPTACLE RRAC 05	15	9	10	15		RECEPTACLE RRAC 17
RECEPTACLE RRAC 06	15	11	12	15		RECEPTACLE RRAC 18
RECEPTACLE RRAC 07	15	13	14	15		RECEPTACLE RRAC 19
RECEPTACLE RRAC 08	15	15	16	15		RECEPTACLE RRAC 20
RECEPTACLE RRAC 09	15	17	18	15		RECEPTACLE RRAC 21
RECEPTACLE RRAC 10	15	19	20	15		RECEPTACLE RRAC 22
RECEPTACLE RRAC 11	15	21	22	15		RECEPTACLE RRAC 23
RECEPTACLE RRAC 12	15	23	24	15		RECEPTACLE RRAC 24
POLICE LIGHT RRAC RIGHT	15	25	26	15		RECEPTACLE RRAC 25
SHOWER ROOM LIGHT	15	27	28	15		POLICE LIGHT RRAC LEFT
SPARE	15	29	30	15		CORR. LTG.
SPARE	15	31	32	15		CORR. NIGHT LTG.
SPARE	15	33	34	15		-
SPARE	15	35	36	15		-
SPARE	15	37	38	15		-
SPARE	15	39	40	15		-
-	15	41	42	15		-
-	15	43	44	15		-
-	15	45	46	15		-
-	15	47	48	15		-
TRANSFORMER ALARM	15	49	50	15		YARD LIGHT EAST
ALARM PANEL	15	51	52	15		YARD LIGHT WEST
A/C DUTY ROOM	15	53	54	15		SCU YARD LIGHT
A/C DUTY ROOM	15	55	56	15		S.O.
PIPE SHAFT PLUGS	15	57	58	15		S.O.
PIPE SHAFT PLUGS	15	59	60	15		DUTY ROOM PLUGS
PANTRY PLUGS	15	61	62	15		DUTY ROOM PLUGS
O.P.R. PRINT SHOP	15	63	64	15		DUTY ROOM PLUGS
O.P.R. CONTROL ROOM	15	65	66	15		DUTY ROOM PLUGS
TOTAL x						TOTAL x

- EXERCISE YARD
- DRAWING KEY NOTES:**
- 400mm x 400mm x 150mm JUNCTION BOX.
 - 350mm x 350mm x 150mm JUNCTION BOX.
 - 300mm x 300mm x 150mm JUNCTION BOX.
 - 300mm x 300mm x 150mm JUNCTION BOX.
 - 250mm x 250mm x 150mm JUNCTION BOX.
 - 200mm x 200mm x 150mm JUNCTION BOX.
 - 150mm x 150mm x 150mm JUNCTION BOX.
 - RELOCATE EXISTING CAMERA TO ACCOMMODATE MECHANICAL INSTALLATION AND LINE OF SIGHT
 - EXISTING CAMERA TO REMAIN IN PLACE
 - NEW CAMERA TO BE ADDED

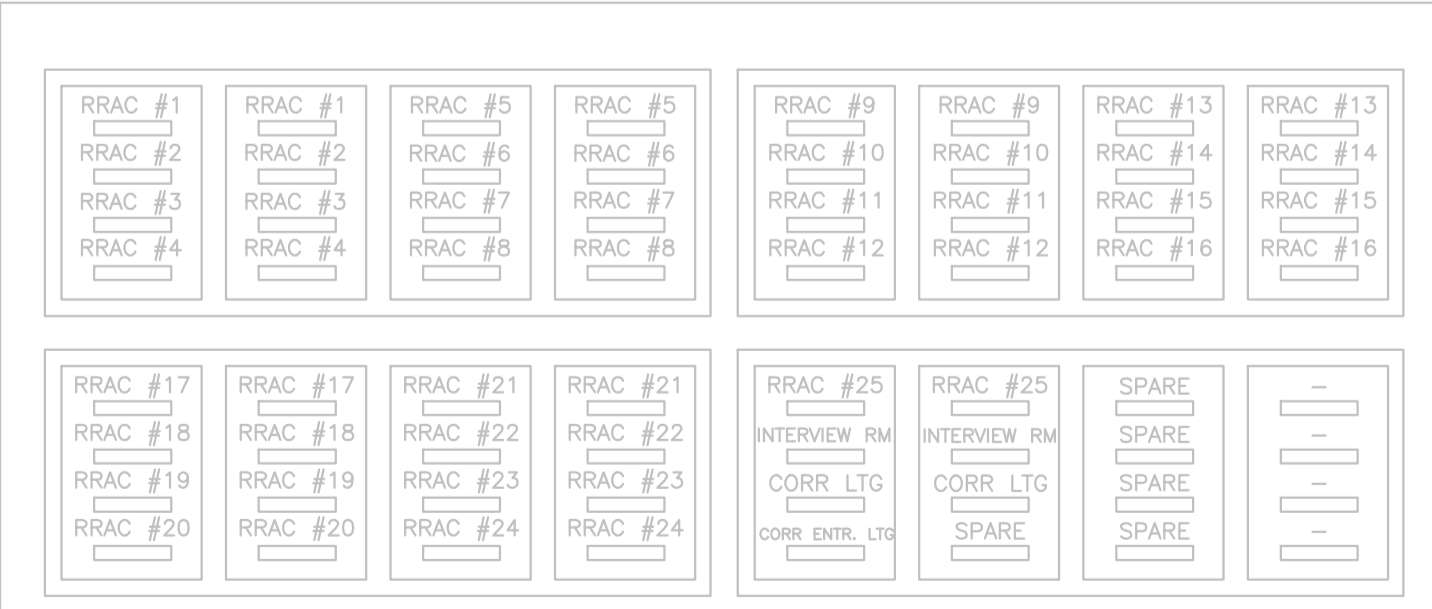
- GENERAL NOTES:**
1. REMOVE 7 EXISTING TYPE-A FLUORESCENT LUMINAIRES IN CORRIDOR AND REPLACE WITH 7 NEW TYPE-L LED LUMINAIRES, USING EXISTING CIRCUITS.
 2. RELOCATE LUMINAIRES TO FREE UP SPACE FOR MECHANICAL EQUIPMENT.
 3. RELOCATE EMERGENCY LIGHTS TO FREE UP SPACE FOR MECHANICAL EQUIPMENT.
 4. APPLY SECURITY SEALANT AROUND NEW AND RELOCATED LUMINAIRES.
 5. REMOVE AND REPLACE CONDUIT TO FREE UP SPACE FOR MECHANICAL EQUIPMENT.
 6. CONDUITS IN INMATE ACCESSIBLE AREAS TO BE RIGID GALVANIZED STEEL. CONDUITS IN CONTROL POST AND OTHER AREAS NOT ACCESSIBLE BY INMATES TO BE EMT.
 7. HIRE AND PAY FOR GENETEC/PIVOT3 CERTIFIED CONTRACTORS TO PERFORM ANY WORKS FOR SECURITY CAMERAS. HOULÉ ELECTRIC AND PALADIN SECURITY COMPANIES ARE KNOWN TO BE CERTIFIED AND THERE MAY BE OTHER CERTIFIED COMPANIES/CONTRACTORS AS WELL.



DETAIL #1: M2c - TYPICAL CELL PLAN
SCALE: NTS



DETAIL #2: SINGLE LINE DIAGRAM - BLDG. M2
SCALE: NTS



DETAIL #3: SWITCHING PANEL FOR BUILDING M2c (RRAC)
SCALE: NTS

NOTES:
1. .
2. .

RELAY PANEL 'RP-EC' EXISTING

DESCRIPTION	CCT. #	RELAY NO.	CCT. #	DESCRIPTION
RECEPTACLE RRAC 01	EC2-1	1	2	EC2-2 RECEPTACLE RRAC 13
RECEPTACLE RRAC 02	EC2-3	3	4	EC2-4 RECEPTACLE RRAC 14
RECEPTACLE RRAC 03	EC2-5	5	6	EC2-6 RECEPTACLE RRAC 15
RECEPTACLE RRAC 04	EC2-7	7	8	EC2-8 RECEPTACLE RRAC 16
RECEPTACLE RRAC 05	EC2-9	9	10	EC2-10 RECEPTACLE RRAC 17
RECEPTACLE RRAC 06	EC2-11	11	12	EC2-12 RECEPTACLE RRAC 18
RECEPTACLE RRAC 07	EC2-13	13	14	EC2-14 RECEPTACLE RRAC 19
RECEPTACLE RRAC 08	EC2-15	15	16	EC2-16 RECEPTACLE RRAC 20
RECEPTACLE RRAC 09	EC2-17	17	18	EC2-18 RECEPTACLE RRAC 21
RECEPTACLE RRAC 10	EC2-19	19	20	EC2-20 RECEPTACLE RRAC 22
RECEPTACLE RRAC 11	EC2-21	21	22	EC2-22 RECEPTACLE RRAC 23
RECEPTACLE RRAC 12	EC2-23	23	24	EC2-24 RECEPTACLE RRAC 24
NIGHT LIGHT RRAC RIGHT	EC2-25	25	26	EC2-26 RECEPTACLE RRAC 25
SHOWER ROOM LIGHT	EC2-27	27	28	EC2-28 NIGHT LIGHT RRAC LEFT
LTG. CORR. ENTRANCE	EC2-29	29	30	EC2-30 CORR. LTG.
SPARE		31	32	EC2-32 CORR. NIGHT LTG.
SPARE		33	34	-
SPARE		35	36	-
SPARE		37	38	-
SPARE		39	40	-
TOTAL x				TOTAL x

Revision	Description/Description	Date
5	RE-ISSUED FOR TENDER	2020.12.14
4	ISSUED FOR TENDER	2020.11.18
C	ISSUED FOR 99% SUBMISSION	2020.10.02
B	ISSUED FOR 80% REVIEW	2020.09.24
A	ISSUED FOR 66% REVIEW	2020.09.18

CORRECTIONAL SERVICE CANADA

Project title/Titre du projet
MATSQUI INSTITUTION
ABBOTSFORD, BC
33344 KING ROAD
MATSQUI LIVING UNIT 5
UNDERSLAB SUPPLY VENTING

Consultant Signature Only
Designed by/Concept par Norman Wong
Drawn by/Dessiné par Thang Cao
PWGSC Project Manager/Administrateur de Projets TPSGC Ken Wendt
Regional Manager, Architectural and Engineering Services / Gestionnaire régionale, Services d'architecture et de génie, TPSGC Preetipal Paul
Drawing title/Titre du dessin

M2c MAIN LEVEL FLOOR PLAN - POWER/LIGHTING LAYOUT





WSP Canada Group Limited.

Project 20M-00305-00

Revision	Description/Description	Date
5	RE-ISSUED FOR TENDER	2020.12.14
4	ISSUED FOR TENDER	2020.11.18
C	ISSUED FOR 99% SUBMISSION	2020.10.02
B	ISSUED FOR 80% REVIEW	2020.09.24
A	ISSUED FOR 66% REVIEW	2020.09.18

Client/client
CORRECTIONAL SERVICE CANADA

Project title/Titre du projet
**MATSQUI INSTITUTION
ABBOTSFORD, BC
33344 KING ROAD**
**MATSQUI LIVING UNIT 5
UNDERSLAB SUPPLY VENTING**

Consultant Signature Only

Designed by/Concept par
Norman Wong

Drawn by/Dessiné par
Thang Cao

PWSSC Project Manager/Administrateur de Projets TPSGC
Ken Wendt

Regional Manager, Architectural and Engineering Services
Gestionnaire régionale, Services d'architectural et de génie, TPSGC
Projet/Projet: Paul

Drawing title/Titre du dessin

**M2c & M2d - PANEL 'EH'
SCHEDULE/SINGLE LINE
DIAGRAM**

Project No./No. du projet
R.11315.001

Sheet/Feuille
E119
4 of 5

Revision no./La Révision no.
4

PANEL 'EH' NEW						
DESCRIPTION	KW	BKR	CIRCUIT NO.	BKR	KW	DESCRIPTION
EH-1 SERVICE CHASE HEATER	0.5	15	1	2		
EH-2 SERVICE CHASE HEATER	0.5	15	3	4	40	HRV-1
EH-3 SERVICE CHASE HEATER	0.5	15	5	6		
EH-4 SERVICE CHASE HEATER	0.5	15	7	8		
EH-5 SERVICE CHASE HEATER	0.5	15	9	10	40	HRV-2
EH-6 SERVICE CHASE HEATER	0.5	15	11	12		
EH-7 SERVICE CHASE HEATER	0.5	15	13	14		
EH-8 SERVICE CHASE HEATER	0.5	15	15	16	30	FC-Z3 FAN COIL
EH-9 SERVICE CHASE HEATER	0.5	15	17	18		
EH-10 SERVICE CHASE HEATER	0.5	15	19	20		
EH-11 SERVICE CHASE HEATER	0.5	15	21	22		
EH-12 SERVICE CHASE HEATER	0.5	15	23	24		SPACE
EH-13 SERVICE CHASE HEATER	0.5	15	25	26	15	P-M2C-1 HEATING PUMP
EH-14 SERVICE CHASE HEATER	0.5	15	27	28		
SPACE			29	30	15	P-M2C-2 HEATING PUMP
SPACE			31	32		
SPACE			33	34	15	P-15 HYDRONIC PUMP
SPACE			35	36		SPACE
SPACE			37	38		SPACE
SPACE			39	40	15	SERVICE RECEPT. HRV-1
EF-K1 WALL EXH. FAN KITCHEN	0.35	15	41	42	15	SERVICE RECEPT. HRV-2
TOTAL	7.35 kW					TOTAL 37.3 kW

- SPECIFICATIONS
- 100A MAIN CIRCUIT BREAKER
 - 225A BUS, 120/208V
 - SEE SECTION 26 24 17

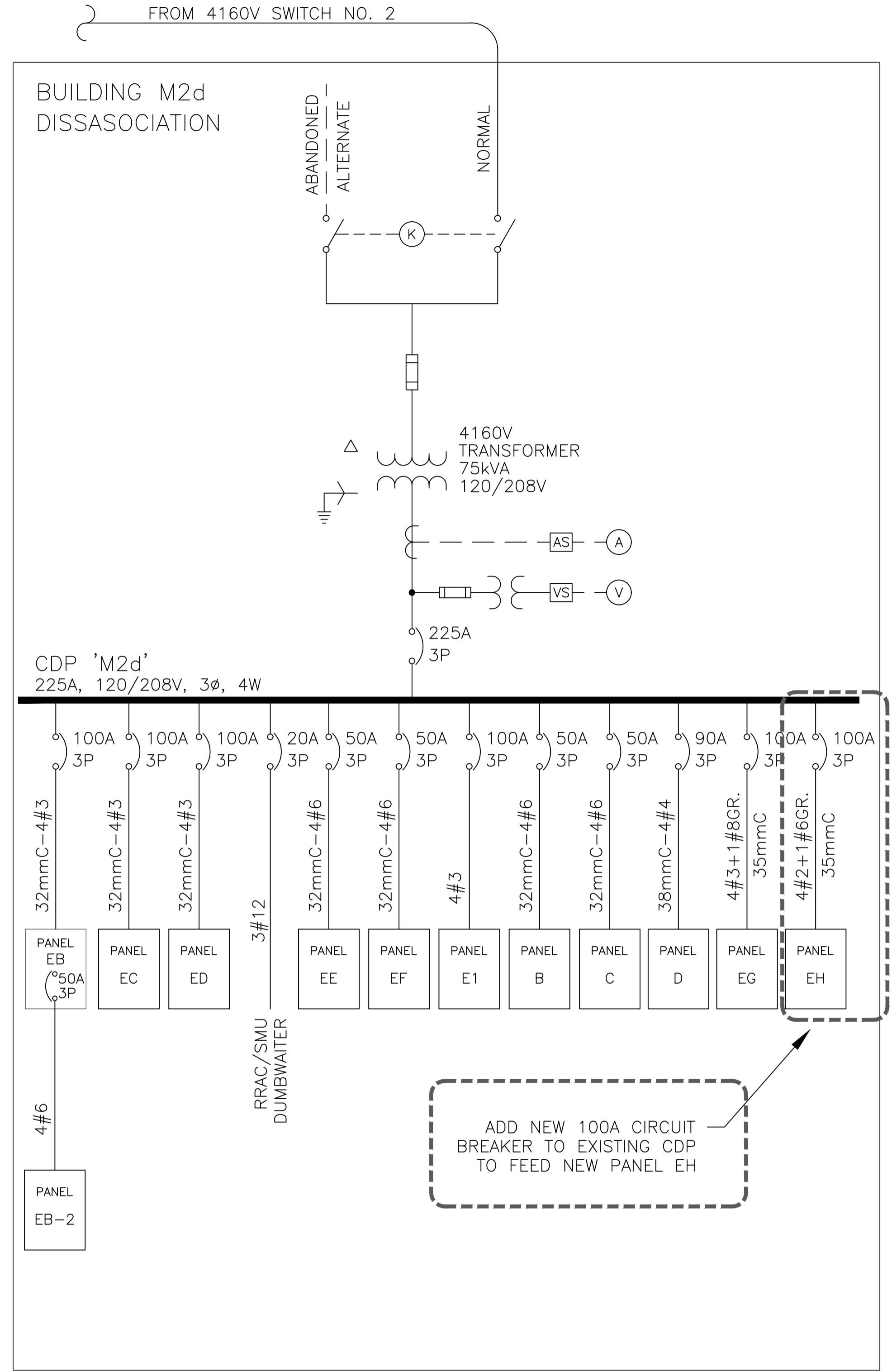
INSTALL NEW PANEL EH IN MECHANICAL ROOM

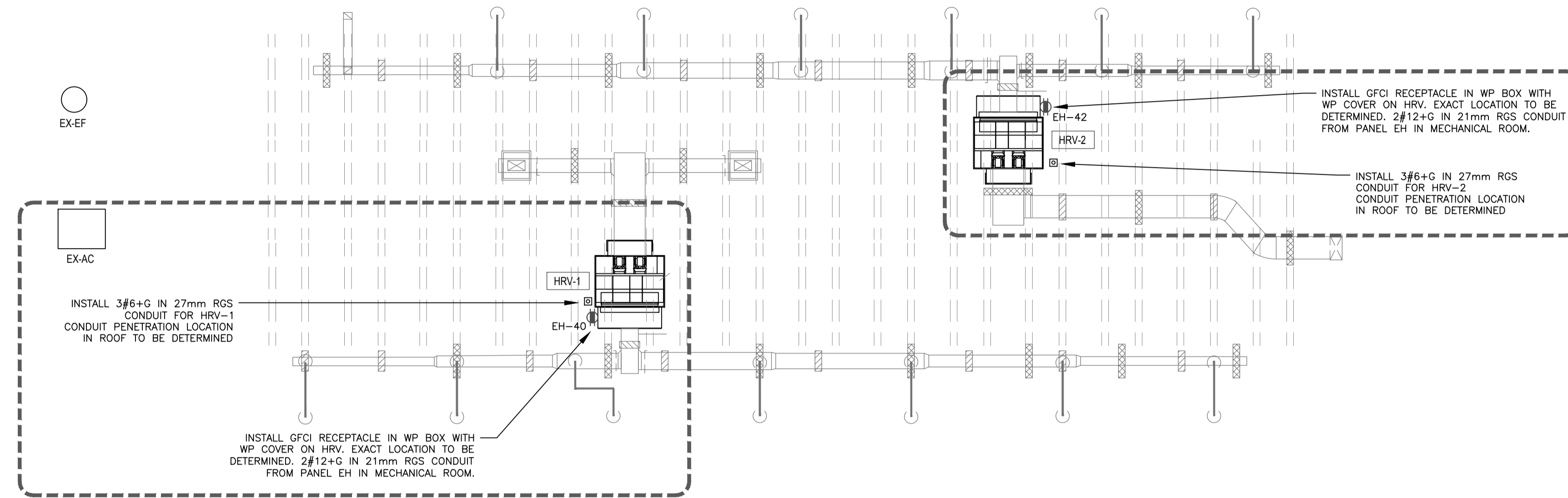
GENERAL NOTES:

- ARRANGE FOR ARC FLASH AND SHOCK HAZARD WARNING LABELS TO BE PUT ON ALL NEW PANELS.

Mechanical Equipment Schedule												
Tag No.	Unit Description	Location	Volts	Phase	FLA	HP	Panel	Circuit No.	Conduit Size	Wire Size	Disc. Sw.	
EF-K1	Kitchenette wall exhaust fan	Kitchenette - 1st floor	120	1	2.9	1/4	EH	41	21mm	2#12+G	E, 30A	
HRV-1	Heat Recovery Unit - 2nd floor	Roof, straddling GL '86'	208	3	35.6	1+2	EH	2, 4, 6	27mm	3#6+G	M	
HRV-2	Heat Recovery Unit - 1st floor	Roof, straddling GL '91'	208	3	35.6	1+2	EH	8, 10, 12	27mm	3#6+G	M	
P-M2C-1	Hydronic heating secondary pump	Mechanical Room - 1st Floor	208	1	7.6	3/4	EH	26, 28	21mm	2#12+G	E, 30A	
P-M2C-2	Hydronic heating secondary pump	Mechanical Room - 1st Floor	208	1	7.6	3/4	EH	30, 32	21mm	2#12+G	E, 30A	
FC-Z3	Fan Coil	Mechanical Room - 1st Floor	208	3	16.7	5	EH	14, 16, 18	21mm	3#10+G	E, 30A	
S-11	Exhaust Fan	Mechanical Room - 1st Floor	208	1	7.6	3/4	EH	20, 22	21mm	2#12+G	E, 30A	
P-15	Hydronic pump	Mechanical Room - 1st Floor	120	1	5.8	1/4	EH	34	21mm	2#12+G	E, 30A	
EH-1	Electrical heater	Exterior service chase	120	1	4.2		EH	1	21mm	2#12+G	E, 30A	
EH-2	Electrical heater	Exterior service chase	120	1	4.2		EH	3	21mm	2#12+G	E, 30A	
EH-3	Electrical heater	Exterior service chase	120	1	4.2		EH	5	21mm	2#12+G	E, 30A	
EH-4	Electrical heater	Exterior service chase	120	1	4.2		EH	7	21mm	2#12+G	E, 30A	
EH-5	Electrical heater	Exterior service chase	120	1	4.2		EH	9	21mm	2#12+G	E, 30A	
EH-6	Electrical heater	Exterior service chase	120	1	4.2		EH	11	21mm	2#12+G	E, 30A	
EH-7	Electrical heater	Exterior service chase	120	1	4.2		EH	13	21mm	2#12+G	E, 30A	
EH-8	Electrical heater	Exterior service chase	120	1	4.2		EH	15	21mm	2#12+G	E, 30A	
EH-9	Electrical heater	Exterior service chase	120	1	4.2		EH	17	21mm	2#12+G	E, 30A	
EH-10	Electrical heater	Exterior service chase	120	1	4.2		EH	19	21mm	2#12+G	E, 30A	
EH-11	Electrical heater	Exterior service chase	120	1	4.2		EH	21	21mm	2#12+G	E, 30A	
EH-12	Electrical heater	Exterior service chase	120	1	4.2		EH	23	21mm	2#12+G	E, 30A	
EH-13	Electrical heater	Exterior service chase	120	1	4.2		EH	25	21mm	2#12+G	E, 30A	
EH-14	Electrical heater	Exterior service chase	120	1	4.2		EH	27	21mm	2#12+G	E, 30A	

E - supplied, installed and wired by Electrical, M - supplied, installed and wired by Mechanical





ROOF FLOOR PLAN
1:100



Revision	Description/Description	Date
4	RE-ISSUED FOR TENDER	2020.12.14
3	ISSUED FOR TENDER	2020.11.18
B	ISSUED FOR 99% SUBMISSION	2020.10.02
A	ISSUED FOR 80% REVIEW	2020.09.24

Client/client
CORRECTIONAL SERVICE CANADA

Project title/Titre du projet
**MATSQUI INSTITUTION
ABBOTSFORD, BC
33344 KING ROAD

MATSQUI LIVING UNIT 5
UNDERSLAB SUPPLY VENTING**

Consultant Signature Only

Designed by/Concept par
Norman Wong

Drawn by/Dessine par
Thang Cao

PWSSC Project Manager/Administrateur de Projets TPSGC
Ken Wendt

Regional Manager, Architectural and Engineering Services
Gestionnaire régionale, Services d'architectural et de génie, TPSGC
Proestipal Paul

Drawing title/Titre du dessin
**ROOF PLAN - NEW
POWER/LIGHTING LAYOUT**

Project No./No. du projet R.111315.001	Sheet/Feuille E120 5 of 5	Revision no./La Révision no. 4
--	---	--

