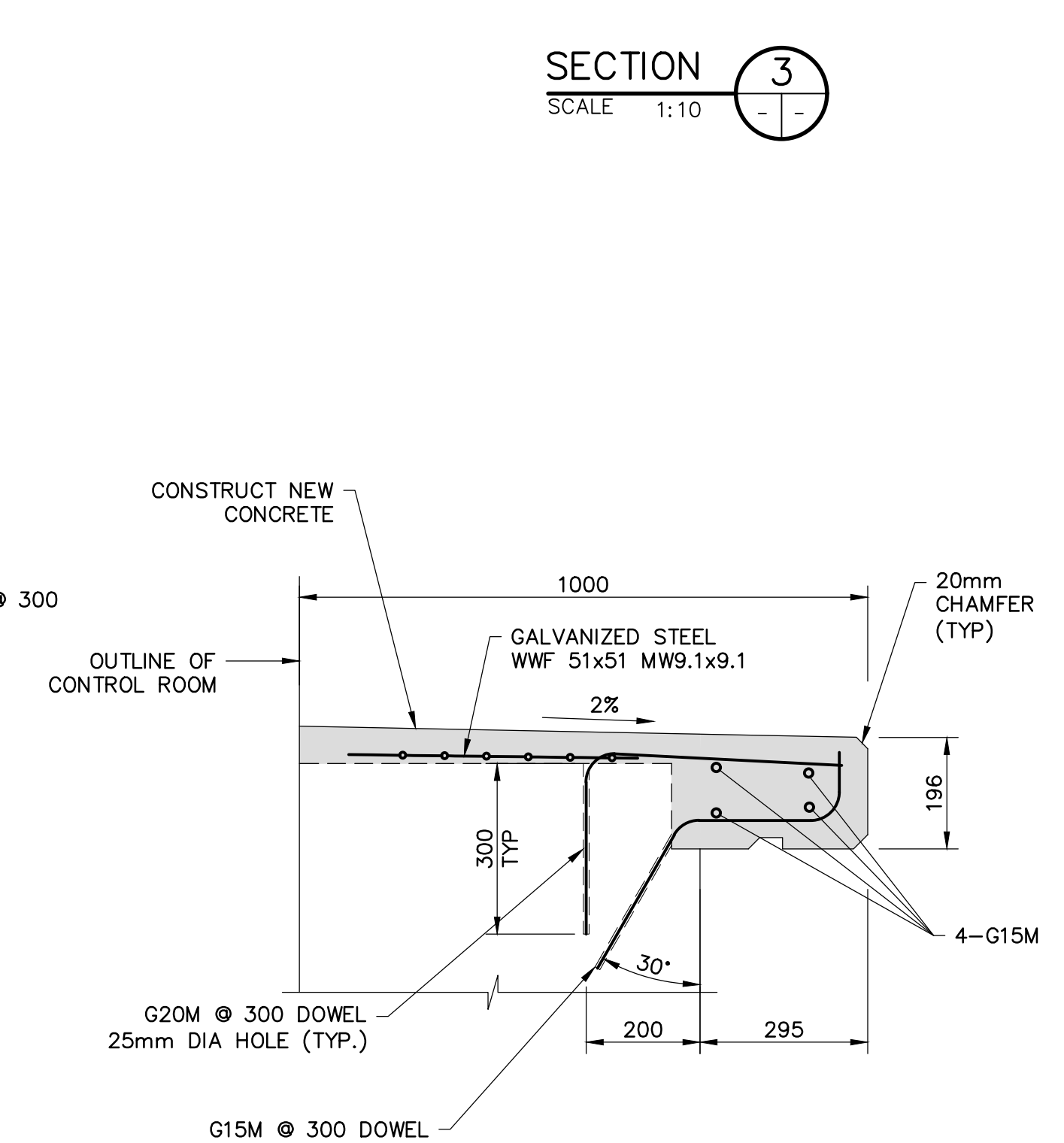
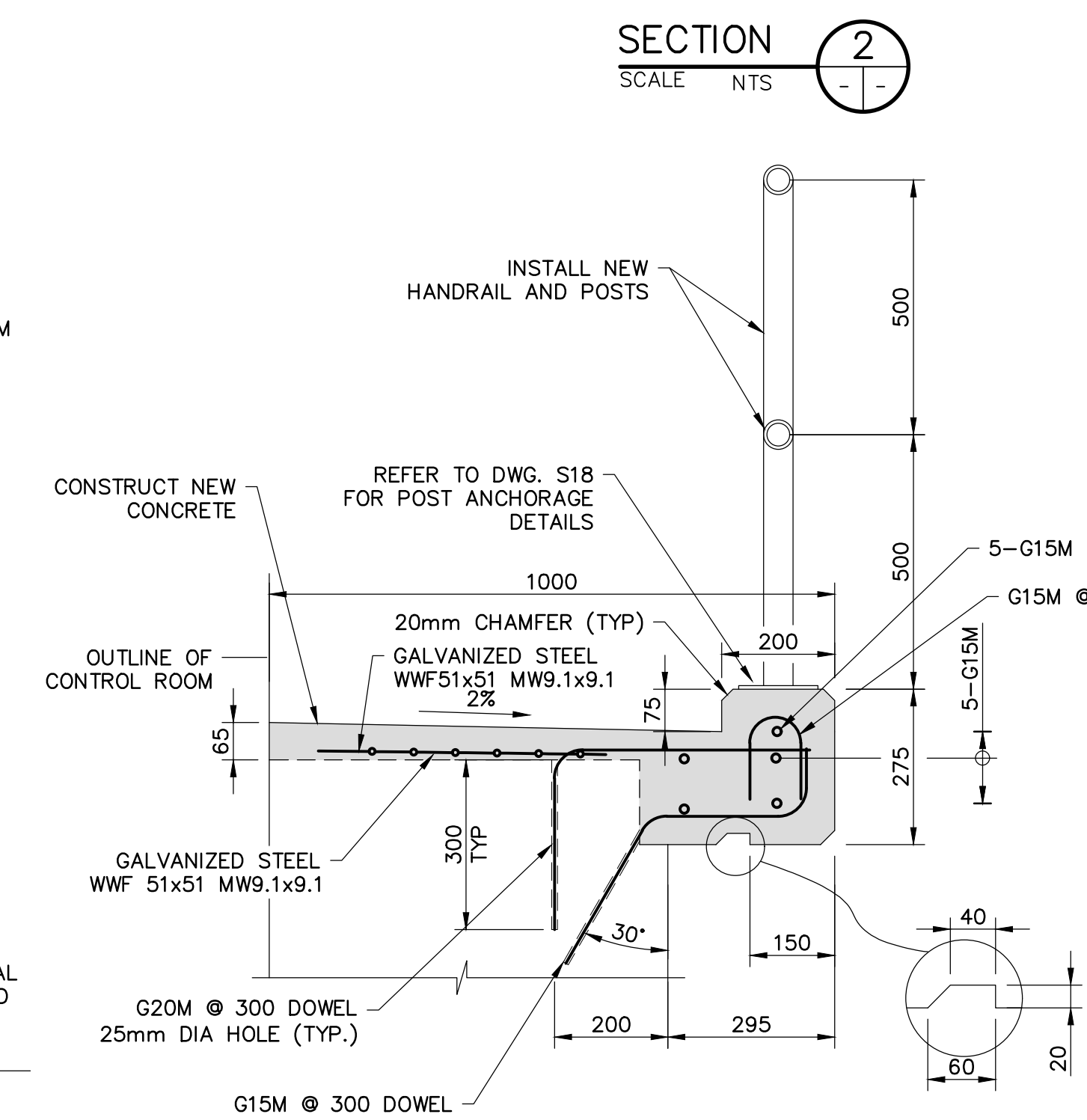
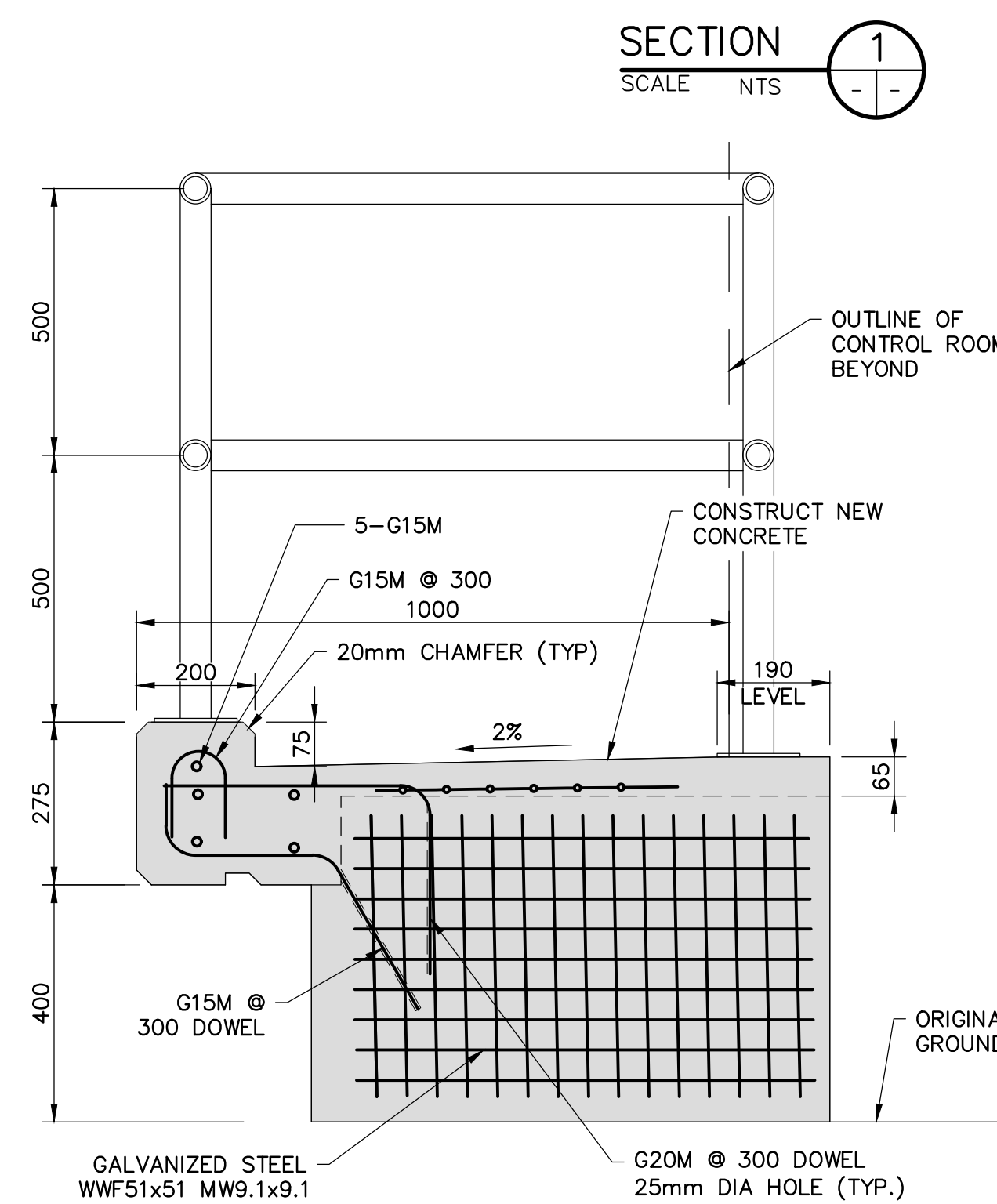
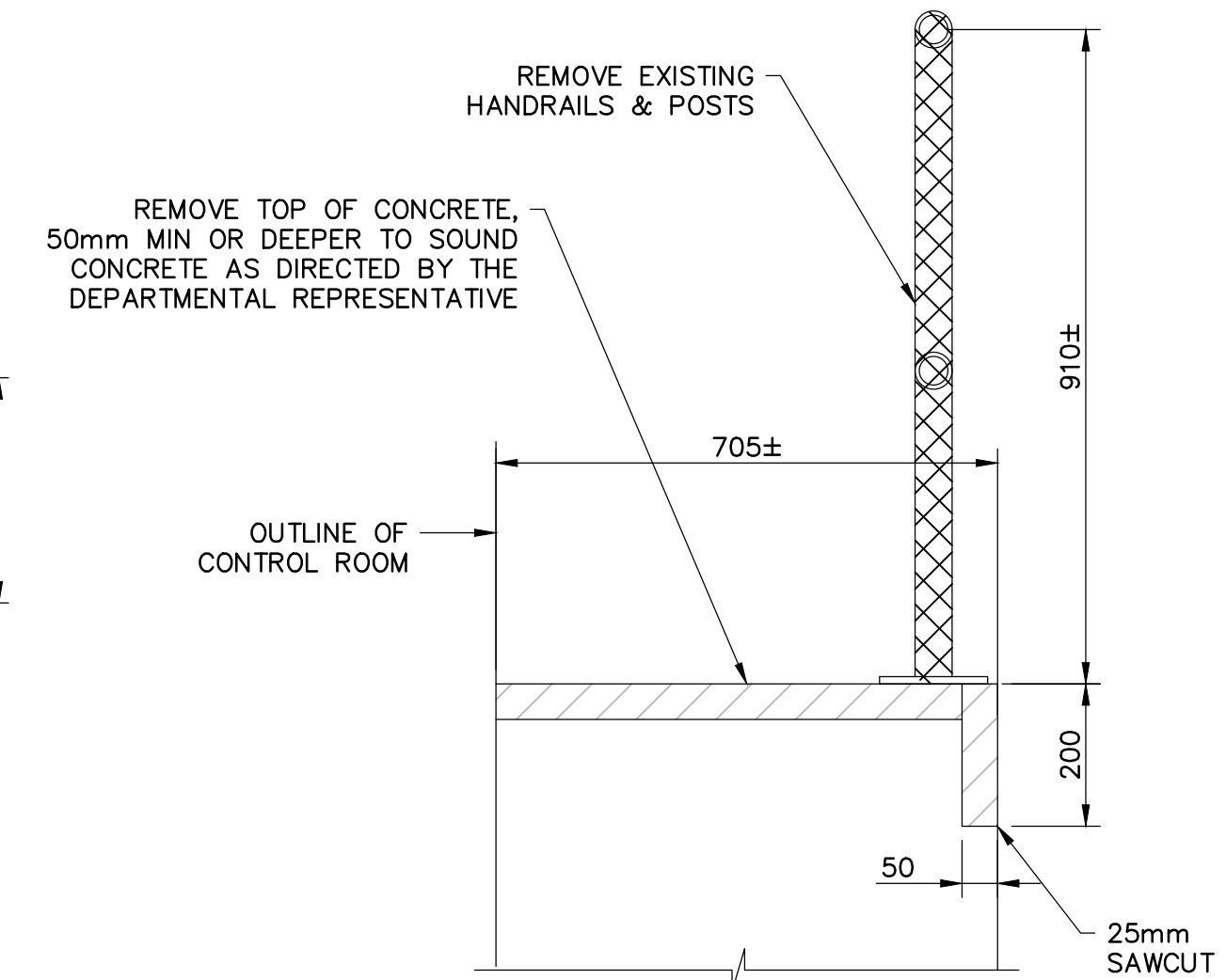
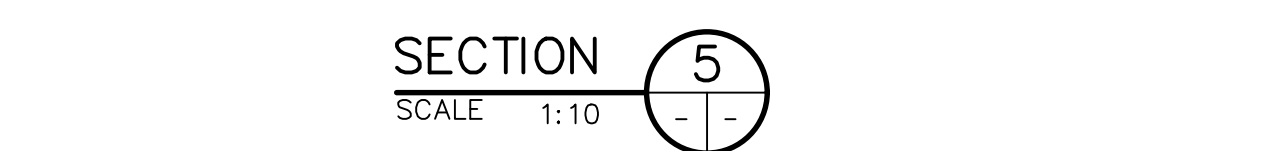


## NOTES:

- THIS DRAWING SHALL BE READ IN CONJUNCTION WITH DWG NOS. S01, S02 AND S18.
- EXISTING STRUCTURE DETAILS, ELEVATIONS AND DIMENSIONS SHOWN ARE APPROXIMATE ONLY AND BASED ON THE AVAILABLE REFERENCE DRAWINGS AND MUST BE FIELD VERIFIED BY THE CONTRACTOR PRIOR TO ANY CONCRETE REMOVAL.
- EXISTING CABLES SHALL BE TEMPORARILY SUPPORTED AND PROTECTED DURING CONCRETE REMOVALS AND REPAIRS.
- FOR RAILING REPLACEMENT DETAILS, SEE TYPICAL DETAILS ELSEWHERE ON THE CONTRACT DOCUMENTS.
- ACCESS TO THE CONTROL ROOM AND MECHANICAL ROOM SHALL BE MAINTAINED AT ALL TIMES DURING CONSTRUCTION.
- WELDED WIRE FABRIC SHALL BE DEFORMED WIRE CONFORMING TO ASTM 1064 WITH MINIMUM YIELD STRENGTH OF 500 MPa.



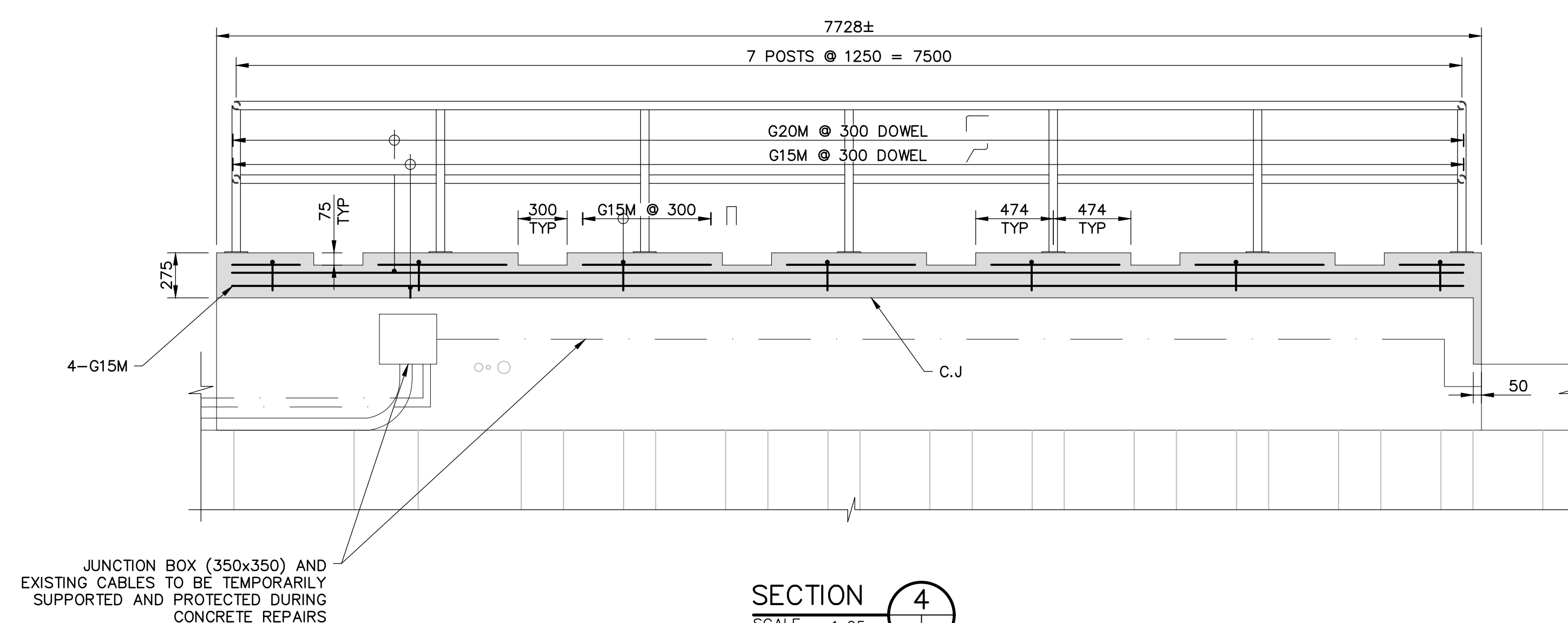
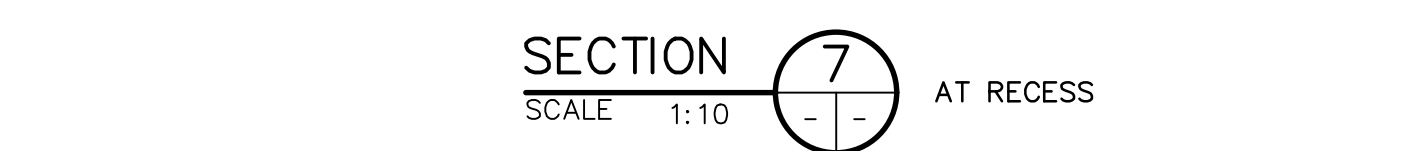
SECTION 5 SCALE 1:10



SECTION 6 SCALE 1:10 AT CURB



SECTION 7 SCALE 1:10 AT RECESS



## LEGEND

- PARTIAL DEPTH REMOVALS
- NEW CONCRETE
- REMOVALS

1 ISSUED FOR BID SUBMISSION 21/09/10

revision	description	date

Do not scale drawings.  
Verify all dimensions and conditions on site and immediately  
notify the departmental representative of all discrepancies.

- A Detail No.  
B drawing no. - where detail required  
C drawing no. - where detailed

project title  
**KINGSTON** Ontario  
PWGSC  
LaSalle Causeway

## LSC CONCRETE REPAIRS

drawing title  
**CONCRETE REPAIR  
& HANDRAIL REPLACEMENT  
AT CONTROL ROOM**

drawn by  
VINCE GUO

designed by  
VINCE GUO

approved by  
J. GOLZARI

bid  
ELISABETH OHI project manager

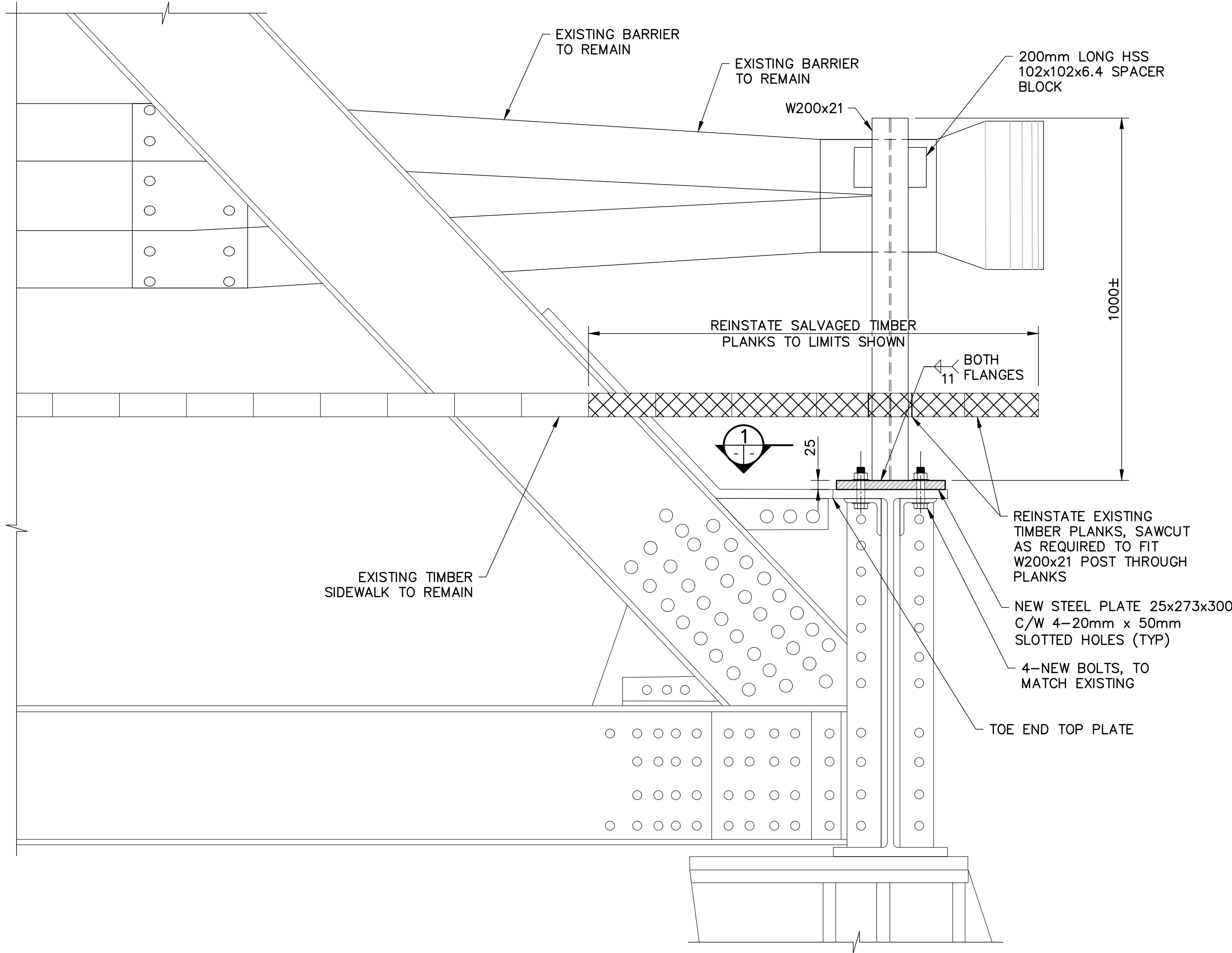
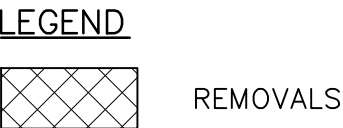
project date  
2021/09/10

project no.  
R.101343.040

drawing no.  
S05



- NOTES:
1. THIS DRAWING SHALL BE READ IN CONJUNCTION WITH DWG S01 AND S02.
  2. POSTS AND PLATES SHALL BE GRADE 350WT, HOLLOW STRUCTURAL SECTIONS SHALL BE SUPPLIED IN ACCORDANCE WITH CSA-G40.20-04/G40.21-04 (R2009) GRADE 350W, CLASS H.



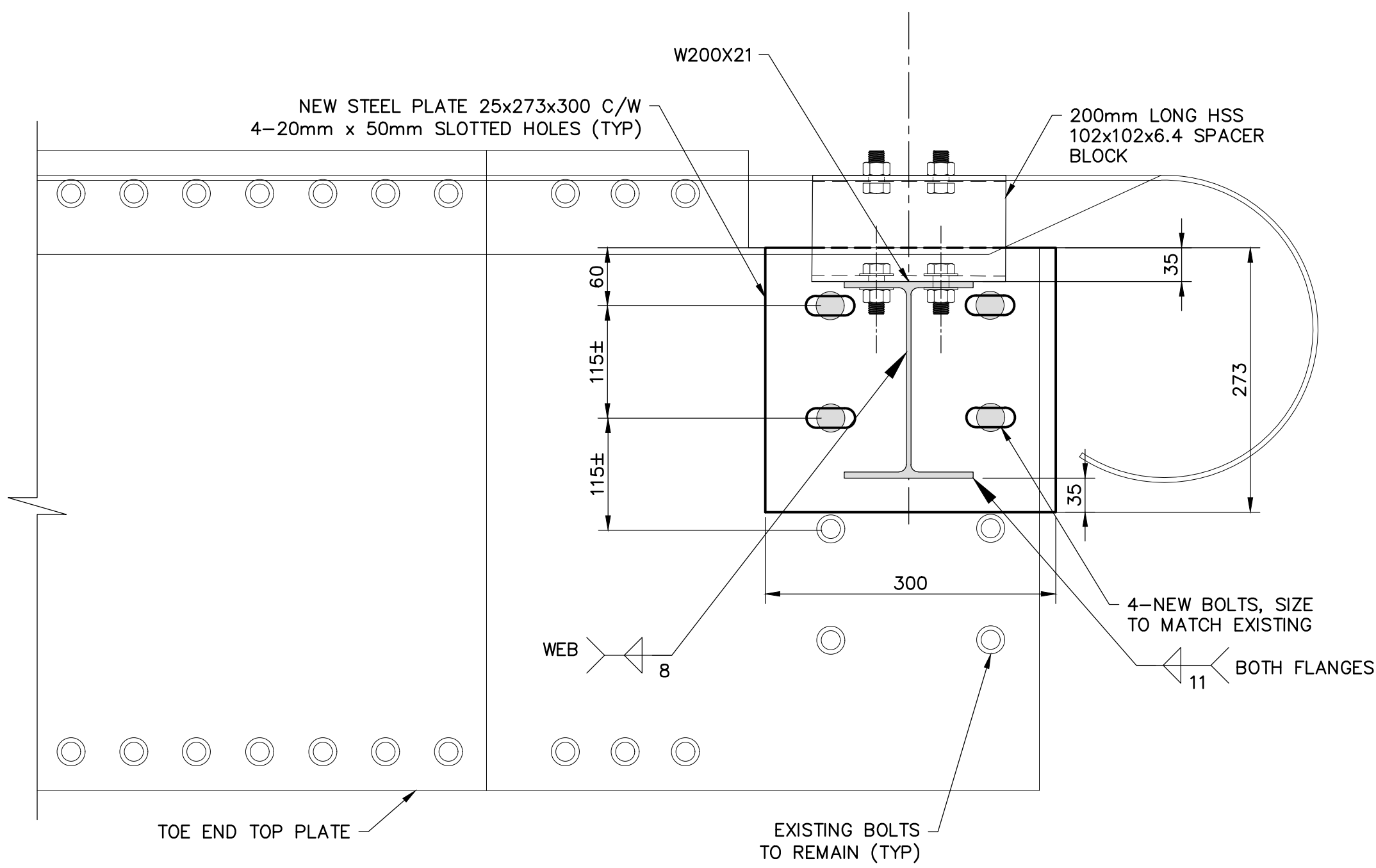
**SOUTHEAST BARRIER POST – REPLACEMENT**

1:10



**SOUTHEAST BARRIER POST – REMOVALS**

N.T.S



SECTION 1  
SCALE 1:10

revision	description	date
1	ISSUED FOR BID SUBMISSION	21/09/10

Do not scale drawings.  
Verify all dimensions and conditions on site and immediately  
notify the departmental representative of all discrepancies.

A Detail No.  
B drawing no. – where detail required  
C drawing no. – where detailed

project title  
**KINGSTON**  
PWGSC  
LaSalle Causeway

Ontario

**LSC CONCRETE REPAIRS**

drawing title  
**ROADSIDE BARRIER POST  
REPLACEMENT DETAILS**

drawn by  
**VINCE GUO**

designed by  
**VINCE GUO**

approved by  
**J. GOLZARI**

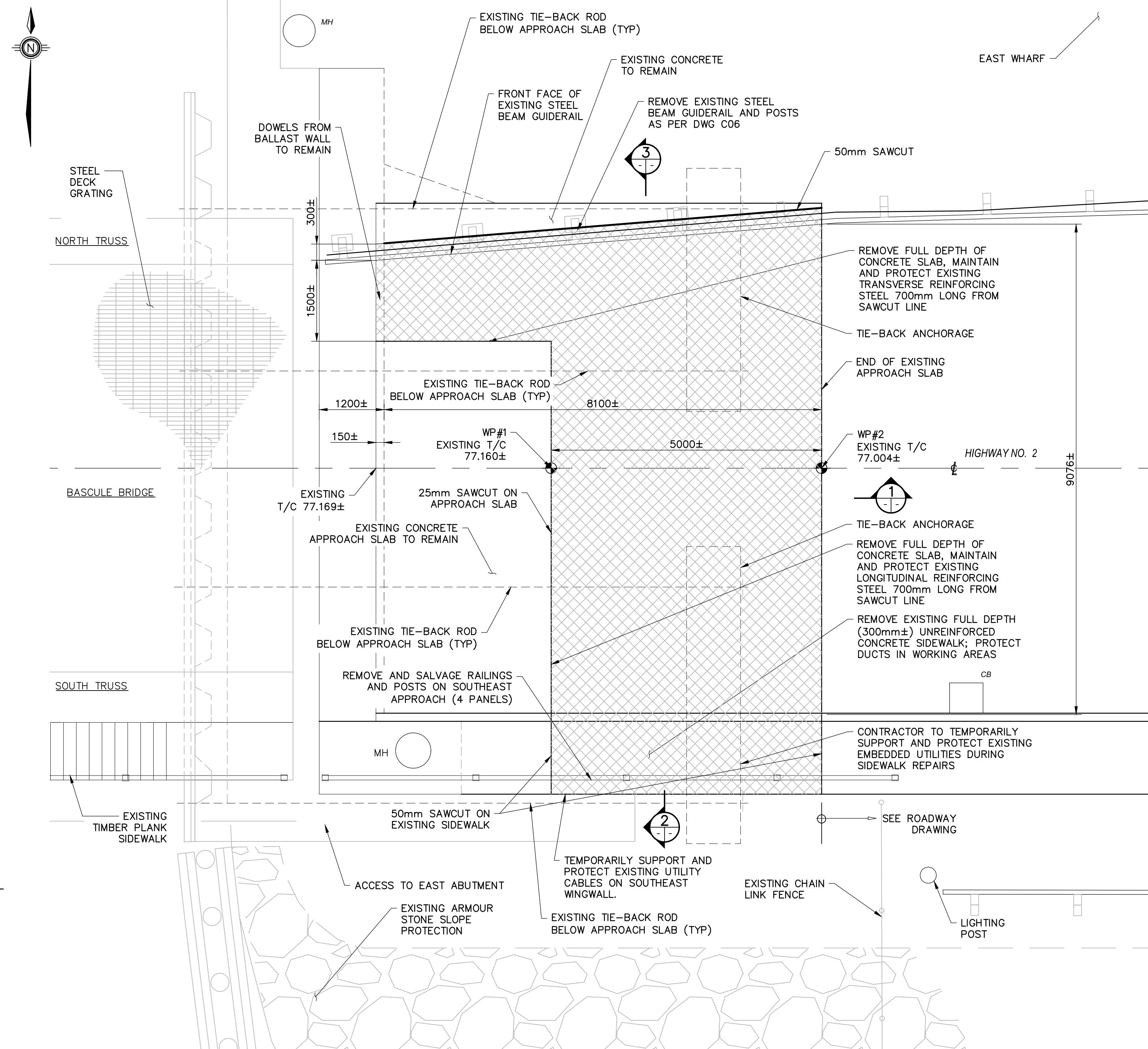
bid  
**ELISABETH OHI** project manager

project date  
**2021/09/10**

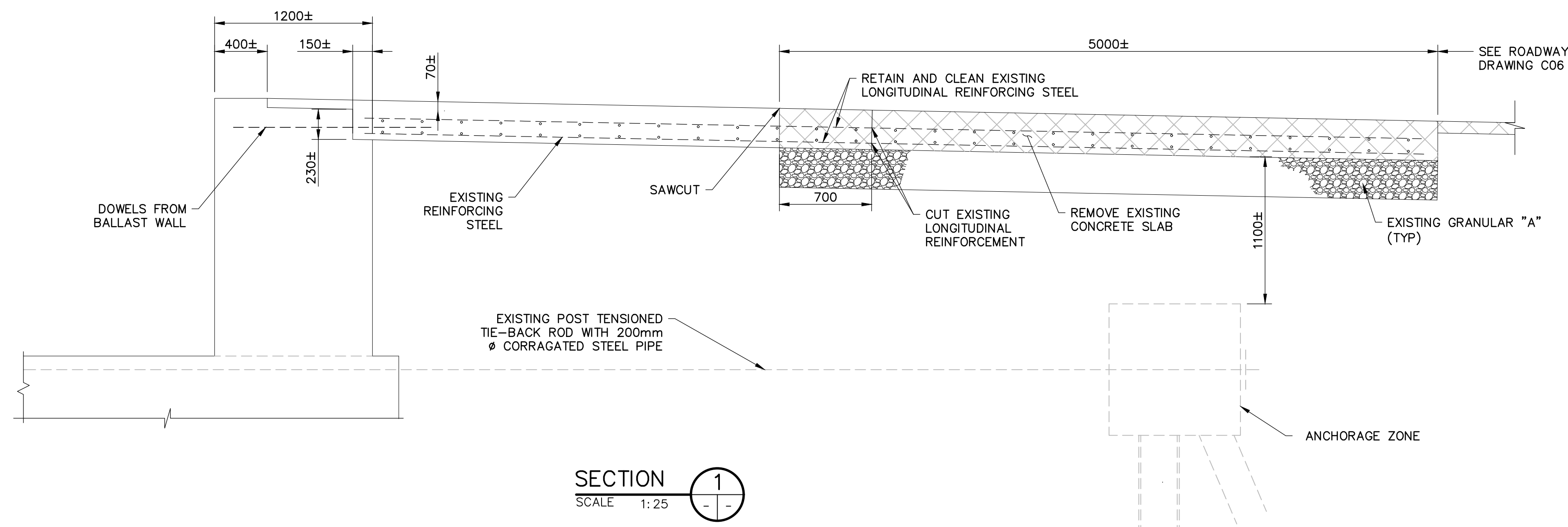
project no.  
**R.101343.040**

drawing no.  
**S06**

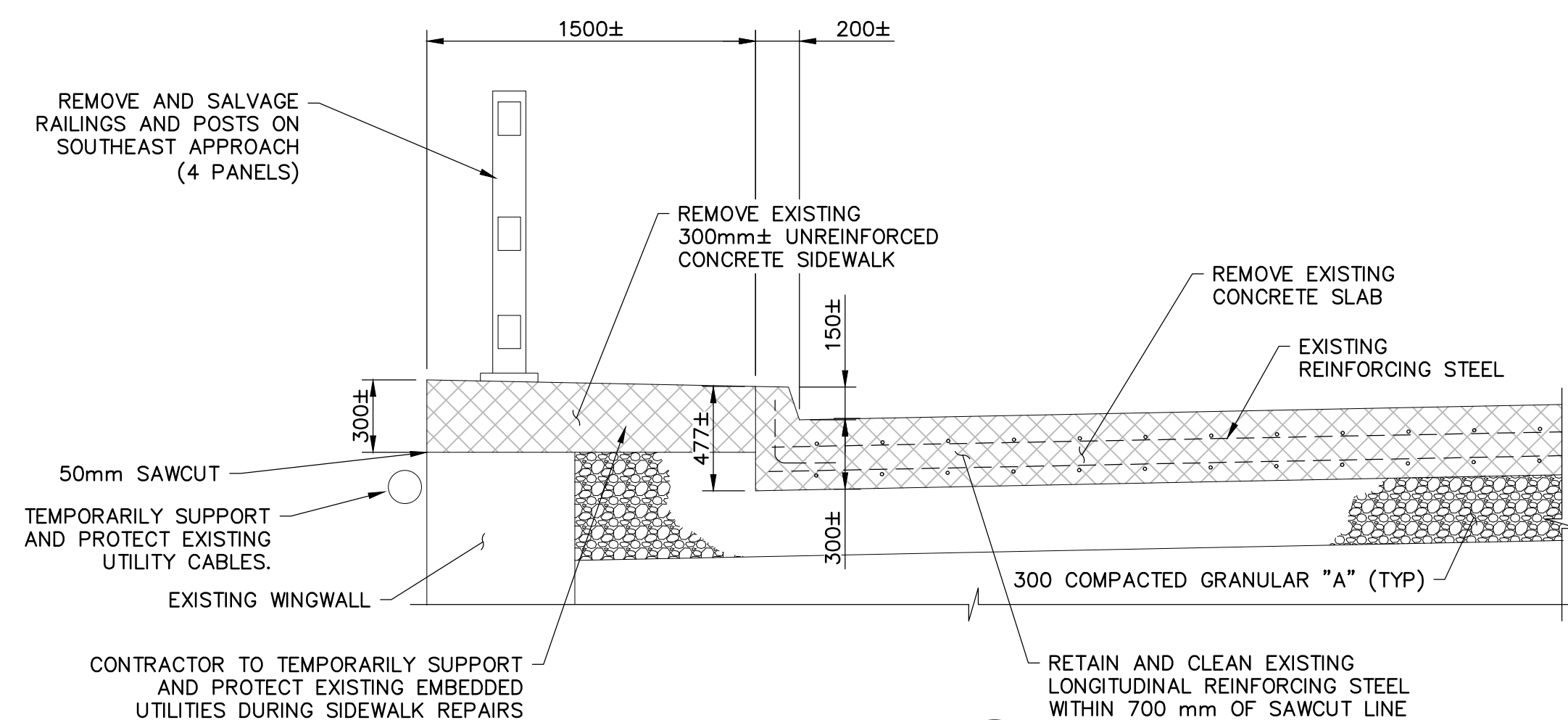




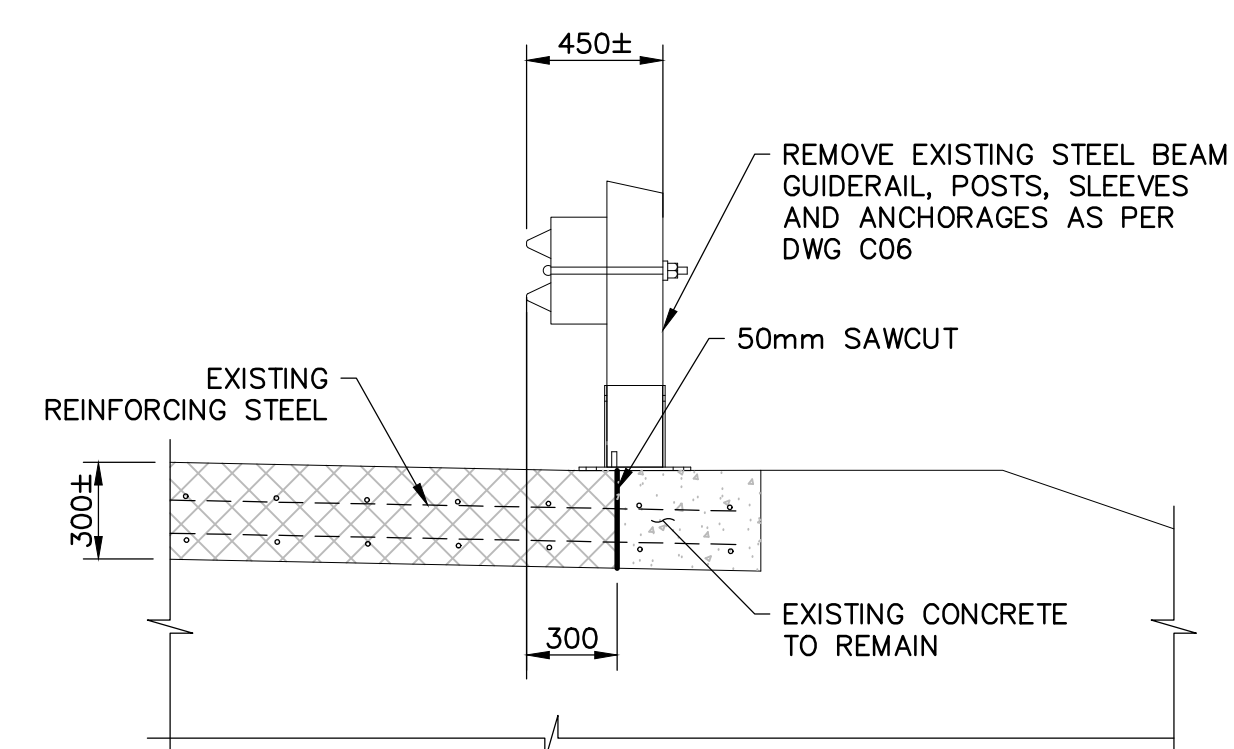
**PLAN**  
1:50



**SECTION 1**  
SCALE 1:25



**SECTION 2**  
SCALE 1:25



**SECTION 3**  
SCALE 1:25

**NOTES:**

1. THIS DRAWING SHALL BE READ IN CONJUNCTION WITH DRAWING C06, S01, S06 AND S08.
2. ABRASIVE BLAST CLEAN ALL REINFORCING STEEL THAT IS TO BE RETAINED.
3. CONTRACTOR SHALL EXERCISE EXTREME CARE DURING REMOVAL OF CONCRETE AND GRANULAR FILL ON APPROACH TO PREVENT DAMAGE TO EXISTING TIE-BACK RODS AND ANCHORAGES.
4. REMOVAL OF GRANULAR FILL AT THE APPROACH SHALL BE AS DIRECTED ON SITE BY THE DEPARTMENTAL REPRESENTATIVE.
5. THE CONTRACTOR SHALL SURVEY THE EXISTING CONDITIONS TO OBTAIN ACCURATE STRUCTURE MEASUREMENTS, ELEVATIONS AND GRADES.
6. LIMIT OF ALL REMOVALS SHALL BE SAWCUT.
7. EXISTING STRUCTURE AND REINFORCING STEEL DESIGNATED TO REMAIN SHALL BE PROTECTED FROM DAMAGE.
8. EXISTING EMBEDDED UTILITY DUCTS IN SIDEWALKS MAY CONTAIN ASBESTOS. CONTRACTOR TO TAKE NECESSARY PRECAUTIONS DURING CONCRETE REMOVALS.
9. SIGNIFICANT CARE SHALL BE TAKEN BY THE CONTRACTOR DURING REMOVAL OF CONCRETE ABOVE UTILITY DUCTS. CONCRETE REMOVAL EQUIPMENT SHALL LIMITED TO CHIPPING HAMMERS (i.e. NO JACKHAMMERS) AND HAND TOOLS.
10. EXISTING STRUCTURE DETAILS, ELEVATIONS AND DIMENSIONS SHOWN ARE APPROXIMATE ONLY AND BASED ON THE AVAILABLE REFERENCE DRAWINGS, AND MUST BE FIELD VERIFIED BY THE CONTRACTOR PRIOR TO ANY CONCRETE REMOVAL.

**LEGEND**

- REMOVALS
- EXISTING CONCRETE
- GRANULAR "A"

1 ISSUED FOR BID SUBMISSION 21/09/10

revision description date

Do not scale drawings.  
Verify all dimensions and conditions on site and immediately  
notify the departmental representative of all discrepancies.

- A Detail No.  
B drawing no. - where detail required  
C drawing no. - where detailed

project title  
**KINGSTON** Ontario  
PWGSC  
LaSalle Causeway

**LSC CONCRETE REPAIRS**

drawing title  
**BASCULE BRIDGE EAST  
APPROACH SLAB REMOVALS**

drawn by  
VINCE GUO

designed by  
VINCE GUO

approved by  
J. GOLZARI

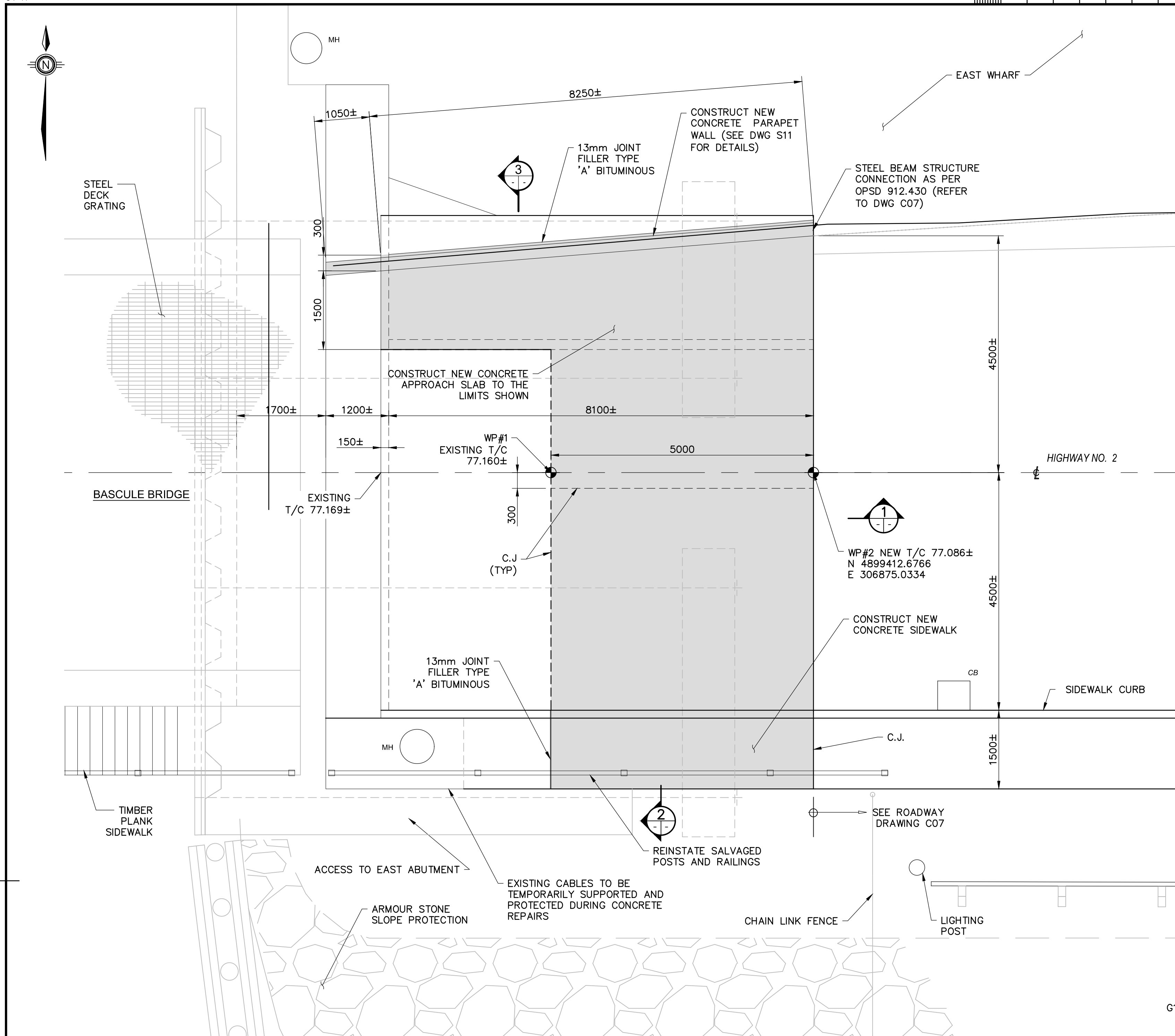
bid project manager  
ELISABETH OHI

project date  
2021/09/10

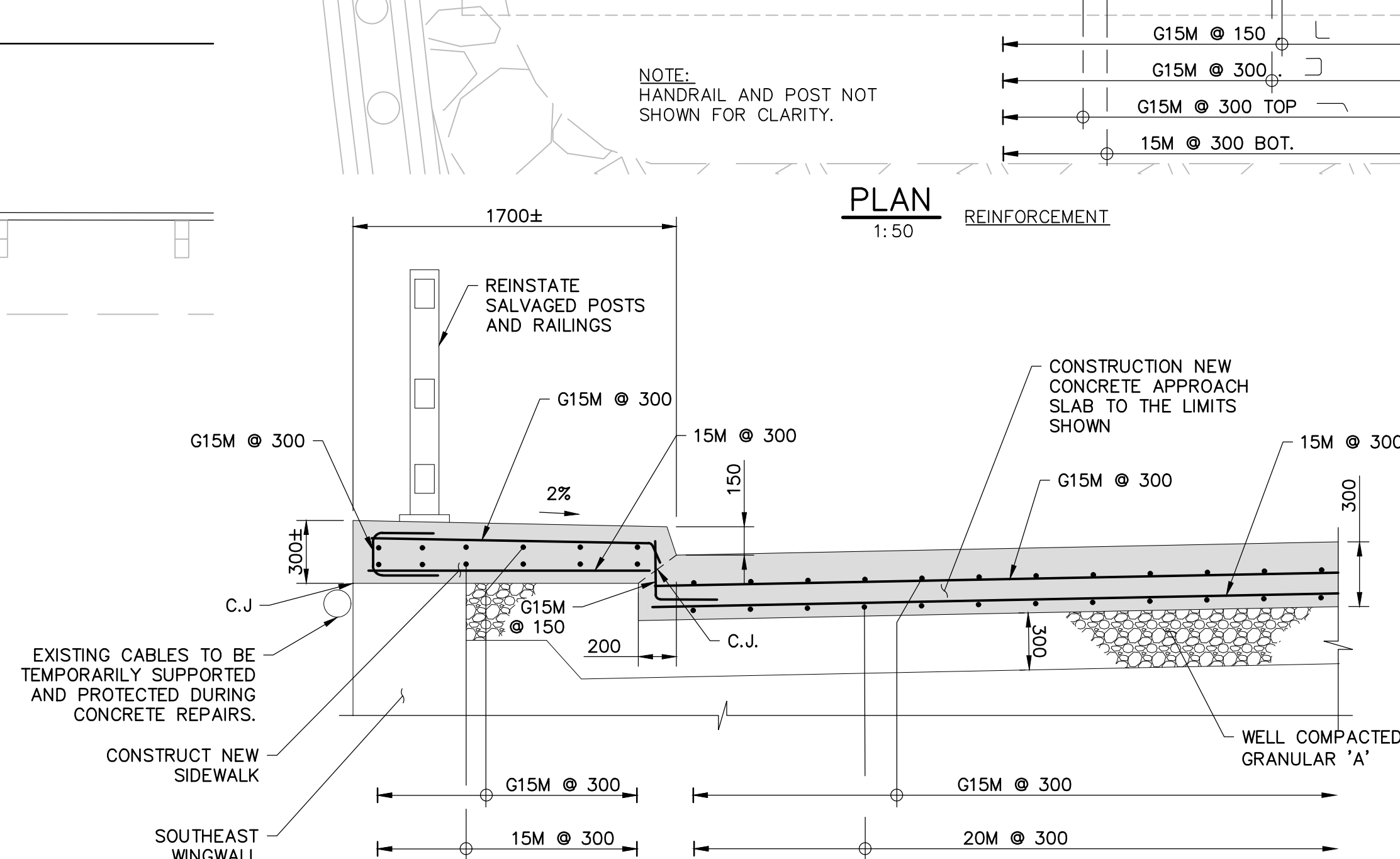
project no.  
R.101343.040

drawing no.  
S07

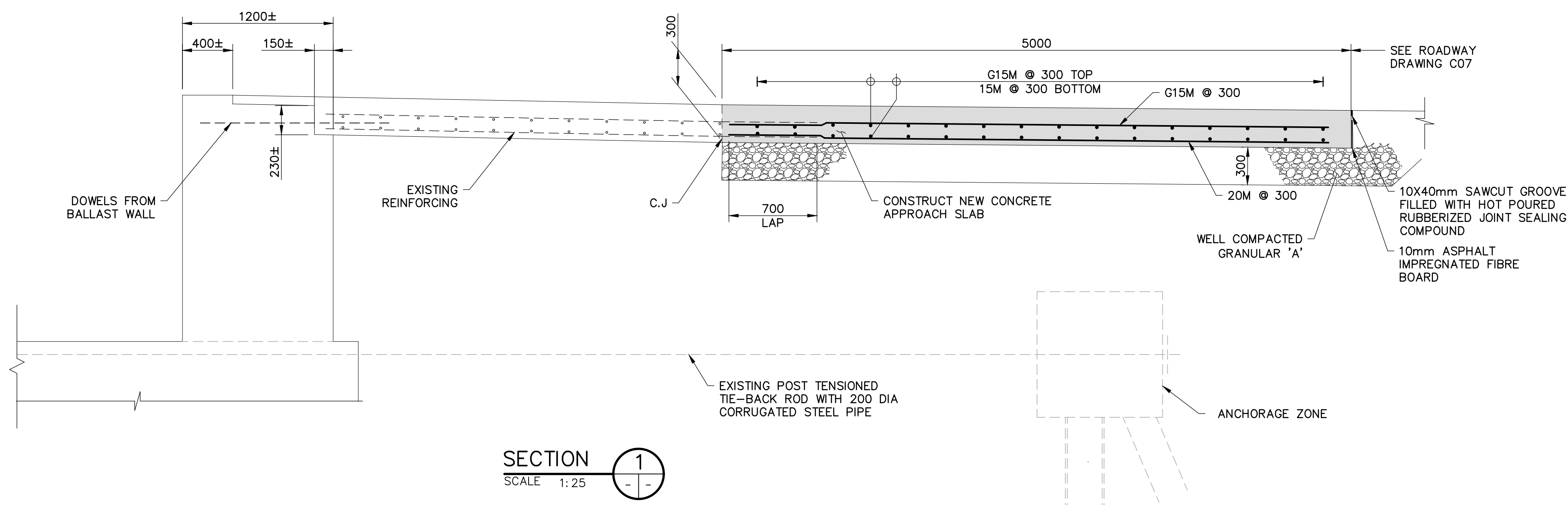




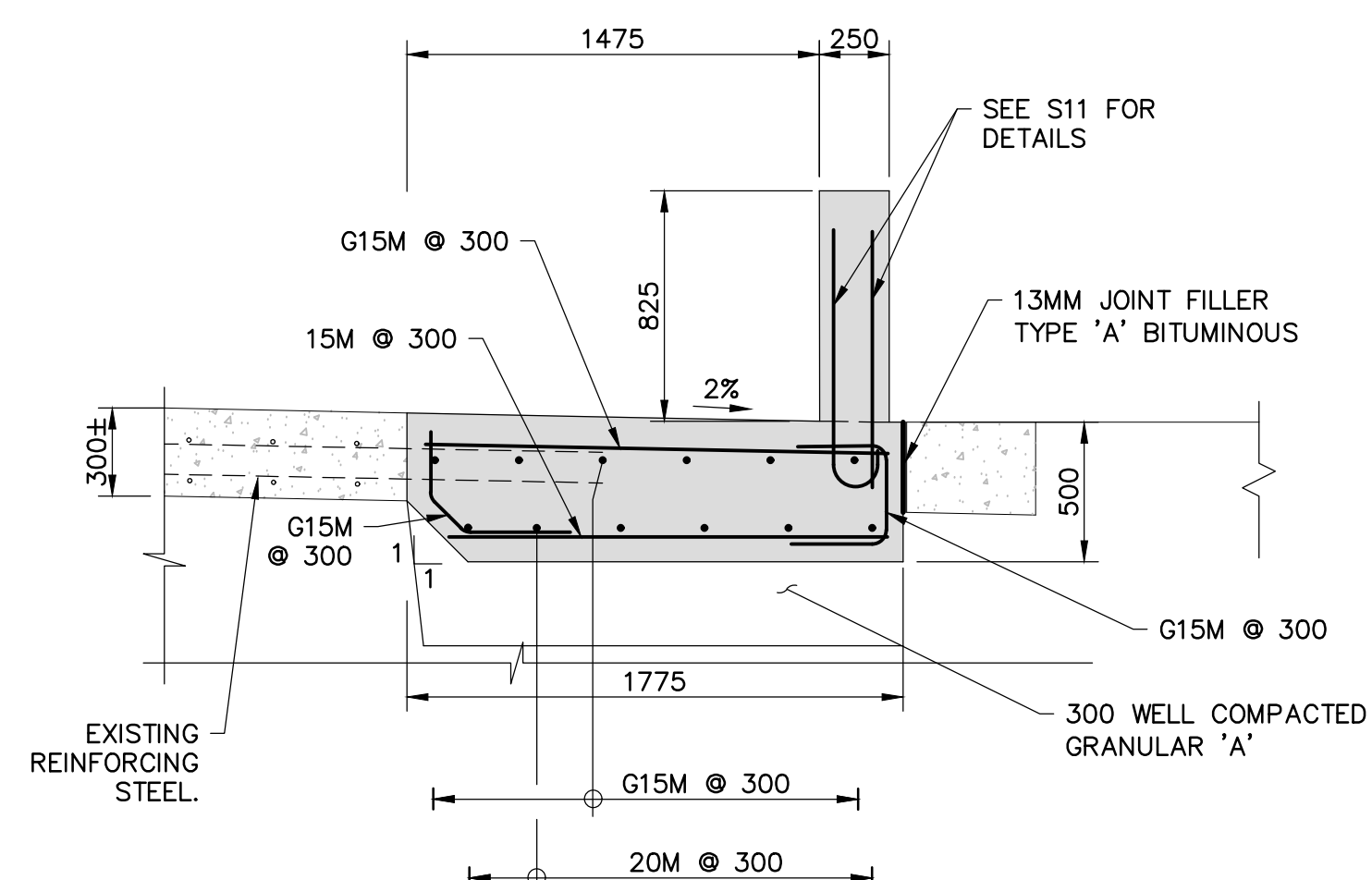
**PLAN**  
1:50



**SECTION 2**  
SCALE 1:25



**SECTION 1**  
SCALE 1:25



**SECTION 3**  
SCALE 1:25

# NOTES:

1. THIS DRAWING SHALL BE READ IN CONJUNCTION WITH DRAWING NOS. C07, S01, S02, S06 AND S11.



## LEGEND

	NEW ASPHALT
	EXISTING CONCRETE
	NEW CONCRETE
	GRANULAR "A"

1 ISSUED FOR BID SUBMISSION 21/09/10

revision	description	date

Do not scale drawings.  
Verify all dimensions and conditions on site and immediately  
notify the departmental representative of all discrepancies.

A	Detail No.
B	drawing no. - where detail required
C	drawing no. - where detailed

project title  
**KINGSTON** Ontario  
PWGSC  
LaSalle Causeway

## LSC CONCRETE REPAIRS

drawing title

## BASCULE BRIDGE EAST APPROACH SLAB REPAIRS

drawn by

VINCE GUO

designed by

VINCE GUO

approved by

J. GOLZARI

bid

ELISABETH OHI

project manager

project date

2021/09/10

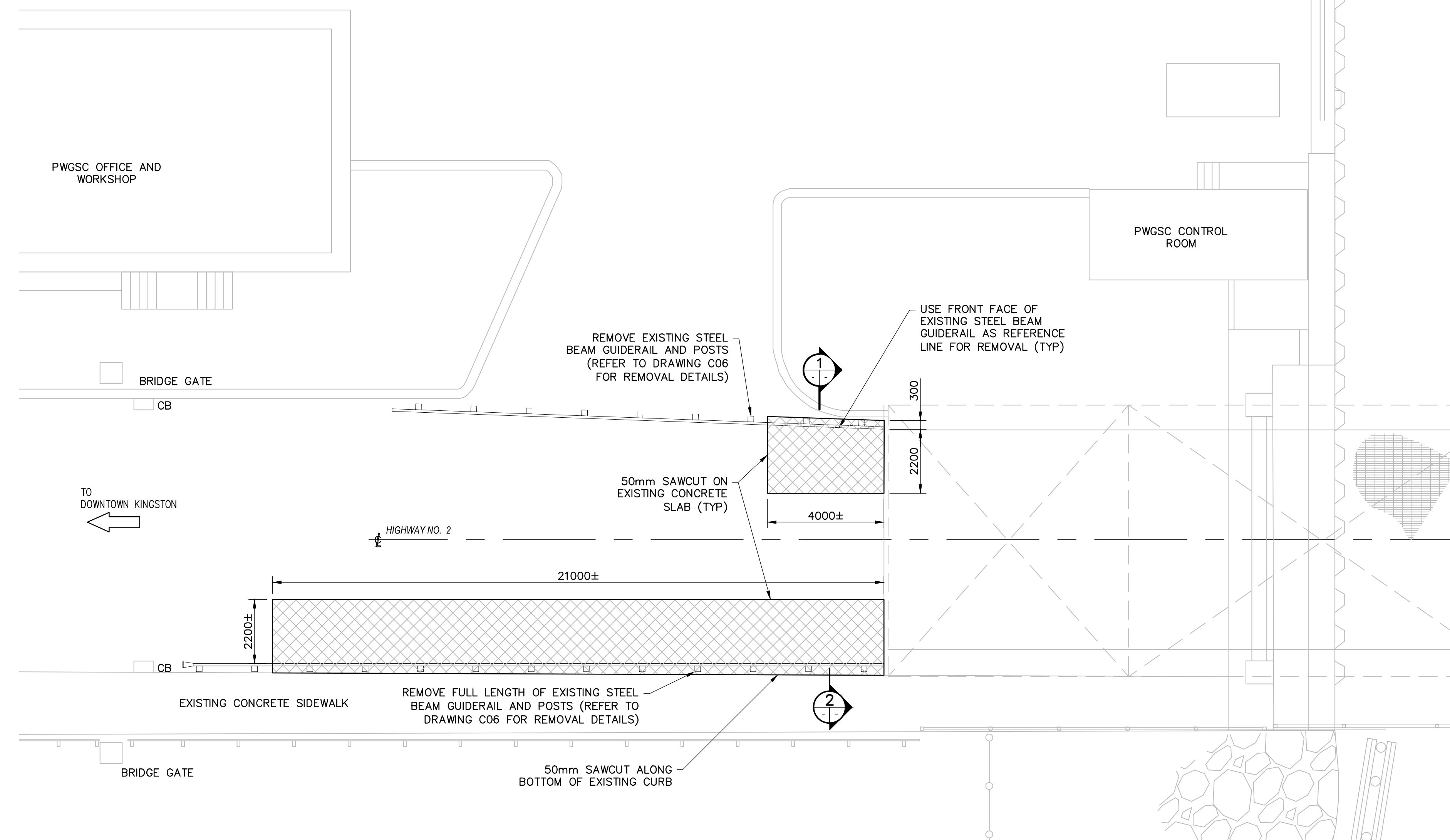
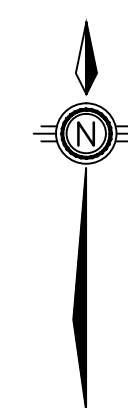
project no.

R.101343.040

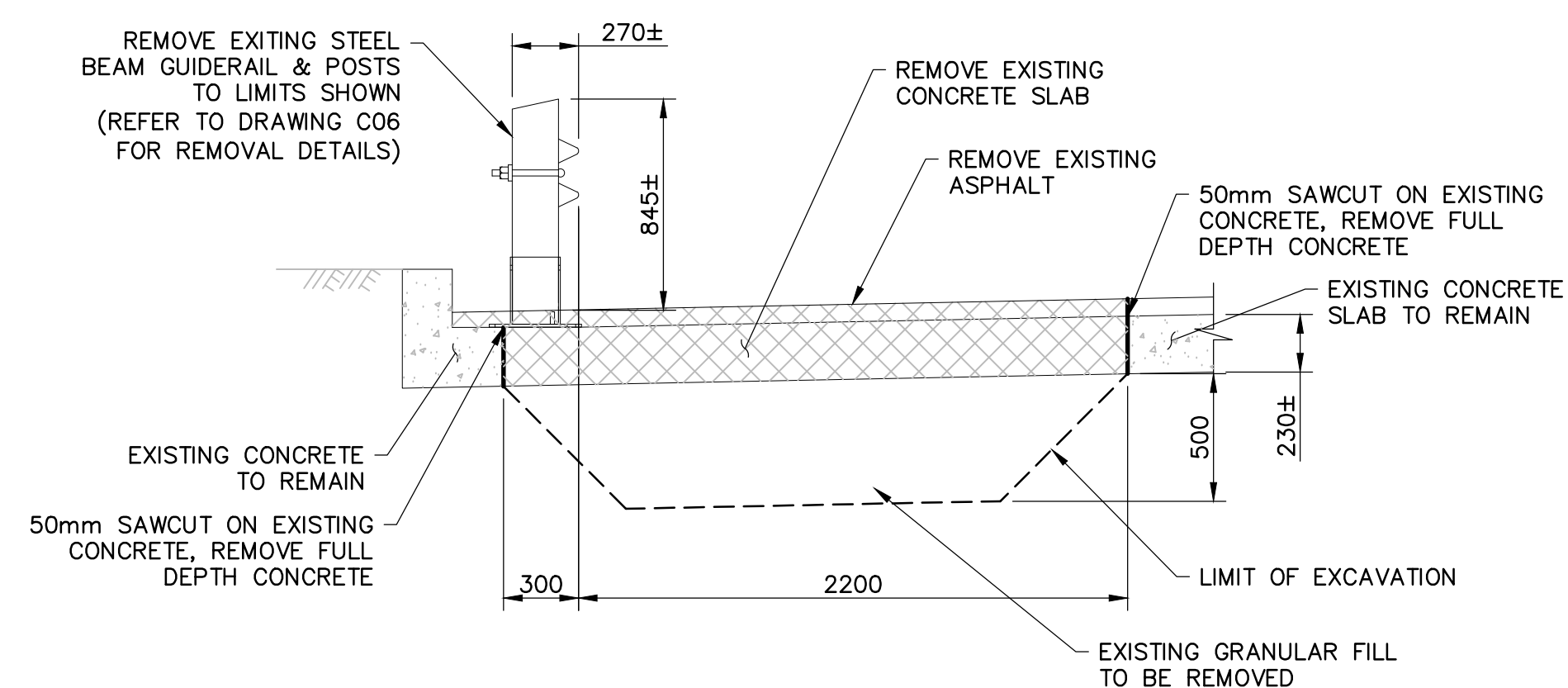
drawing no.

S08

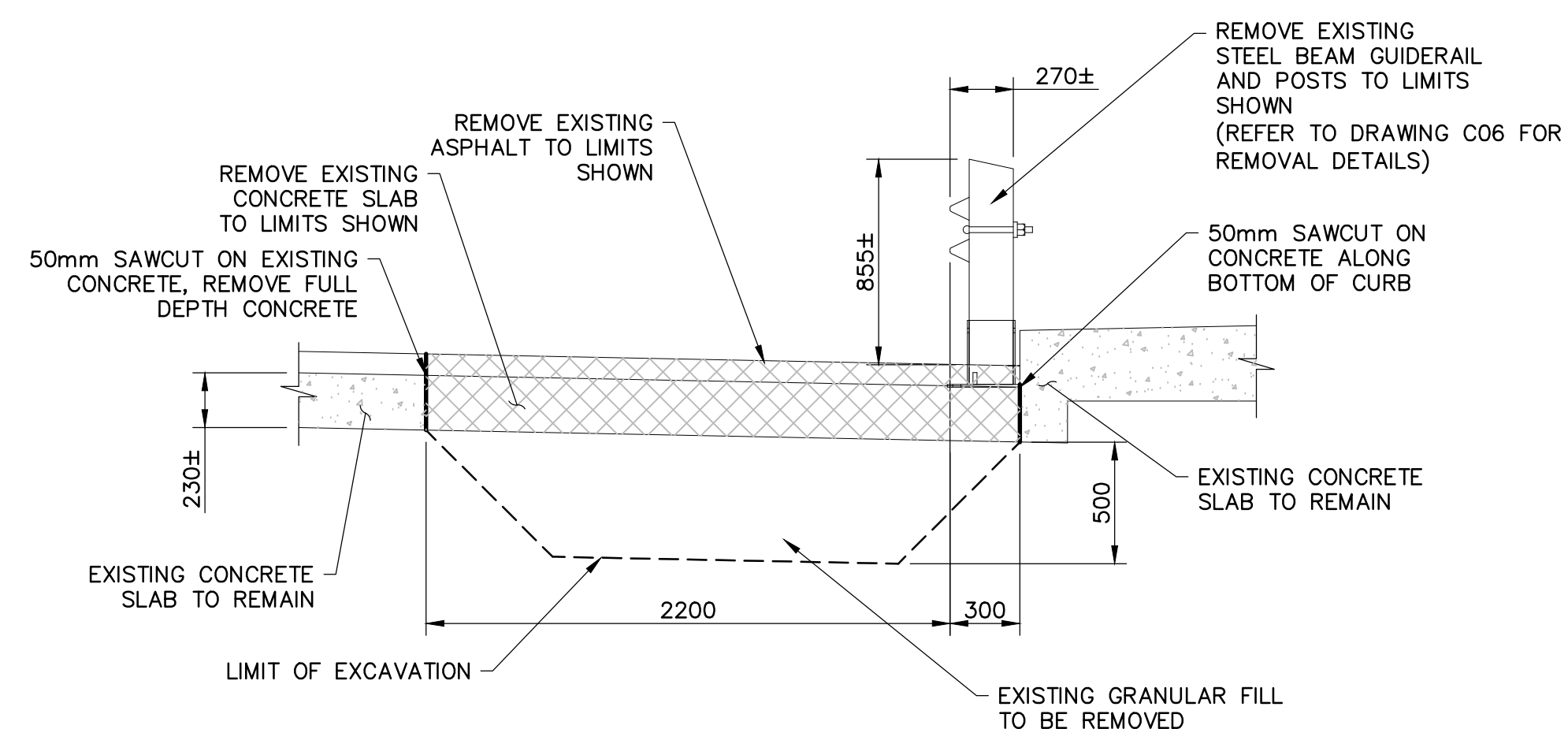




**PLAN**  
1:100



**SECTION 1**  
SCALE 1:25



**SECTION 2**  
SCALE 1:25

**NOTES:**

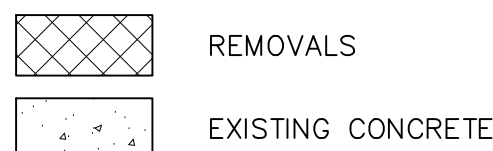
1. THIS DRAWING SHALL BE READ IN CONJUNCTION WITH DWG NOS. C06, S01, AND S02.
2. SIGNIFICANT CARE SHALL BE TAKEN BY THE CONTRACTOR DURING REMOVAL OF CONCRETE ABOVE UTILITY DUCTS. CONCRETE REMOVAL EQUIPMENT SHALL BE LIMITED TO CHIPPING HAMMERS (i.e. NO JACKHAMMERS) AND HAND TOOLS.



**CONCRETE SLAB -REMOVALS**  
N.T.S.



**LEGEND**



1 ISSUED FOR BID SUBMISSION 21/09/10

revision description date  
Do not scale drawings.  
Verify all dimensions and conditions on site and immediately  
notify the departmental representative of all discrepancies.

A Detail No.  
B drawing no. - where detail required  
C drawing no. - where detailed

project title  
**KINGSTON** Ontario  
PWGSC  
LaSalle Causeway

**LSC CONCRETE REPAIRS**

drawing title  
**BASCULE BRIDGE  
WEST APPROACH REMOVALS**

drawn by  
VINCE GUO

designed by  
VINCE GUO

approved by  
J. GOLZARI

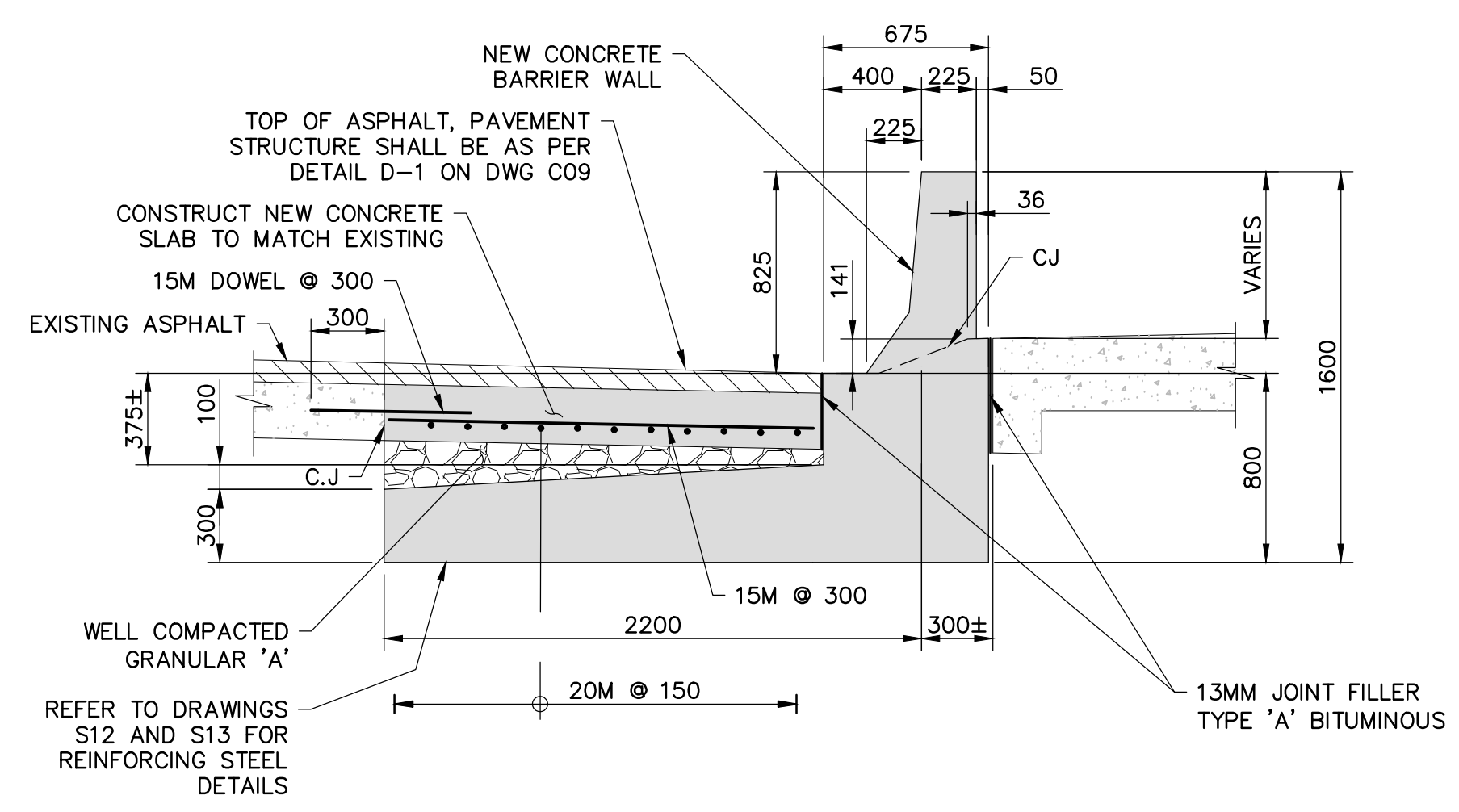
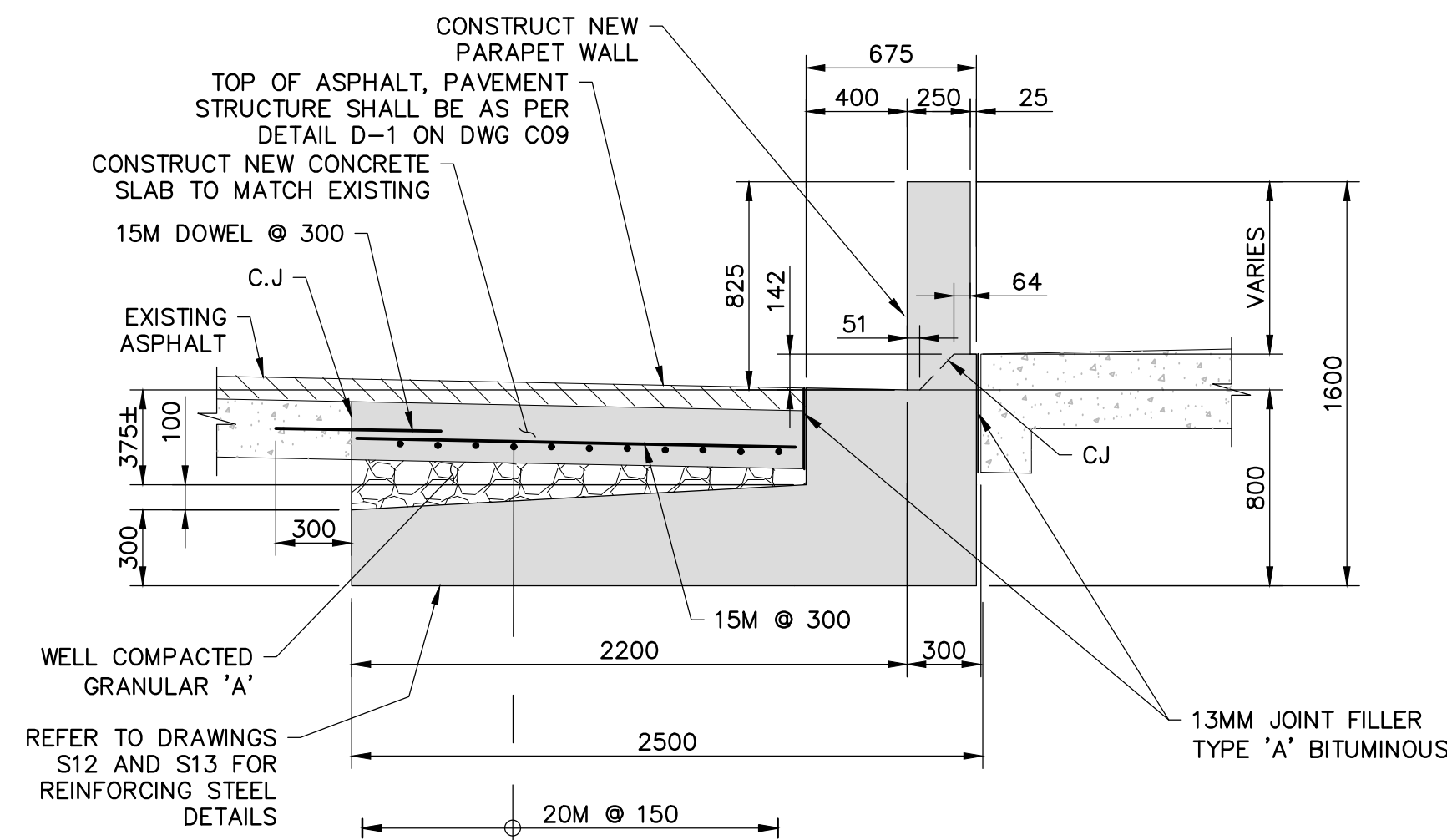
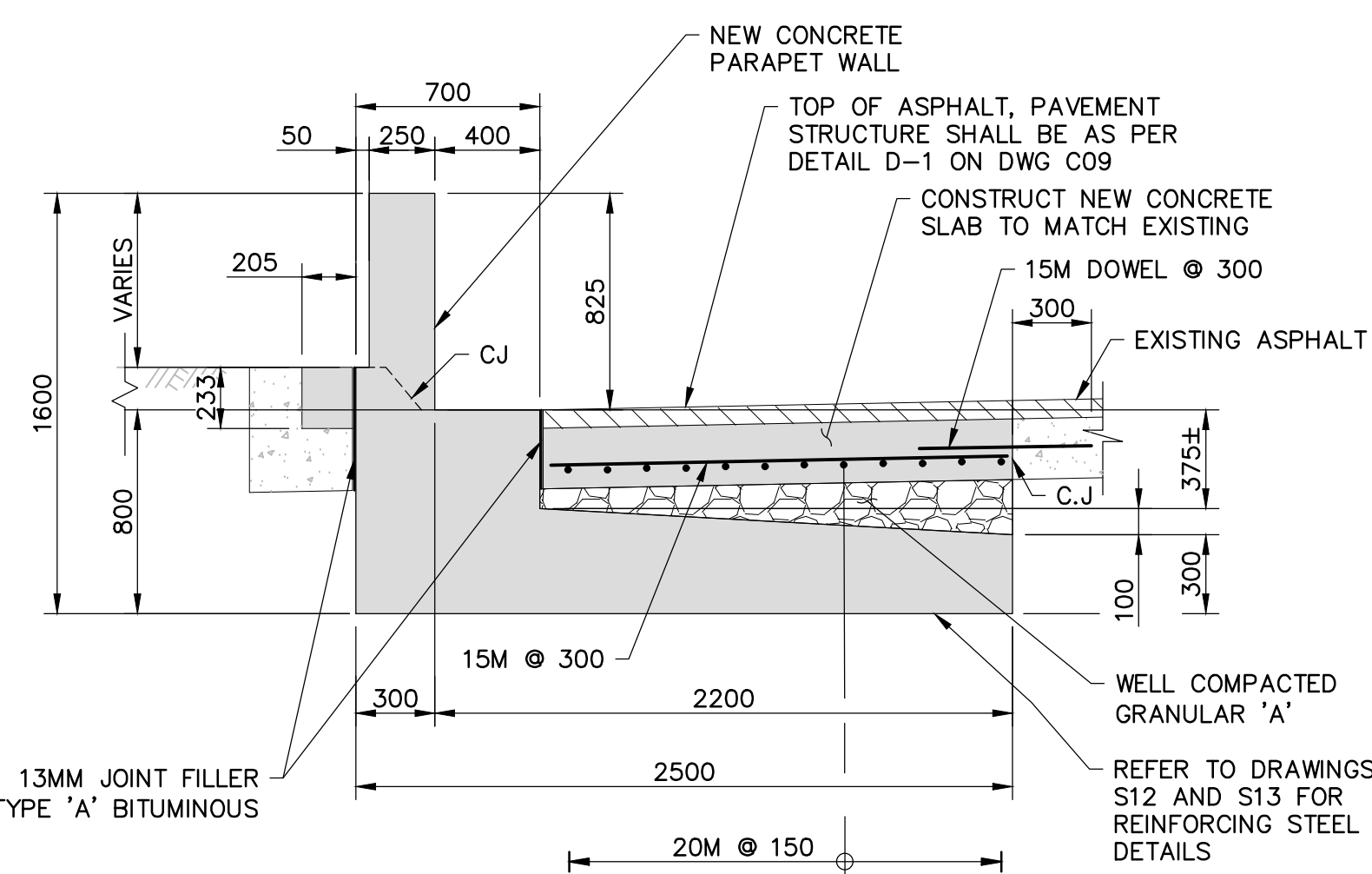
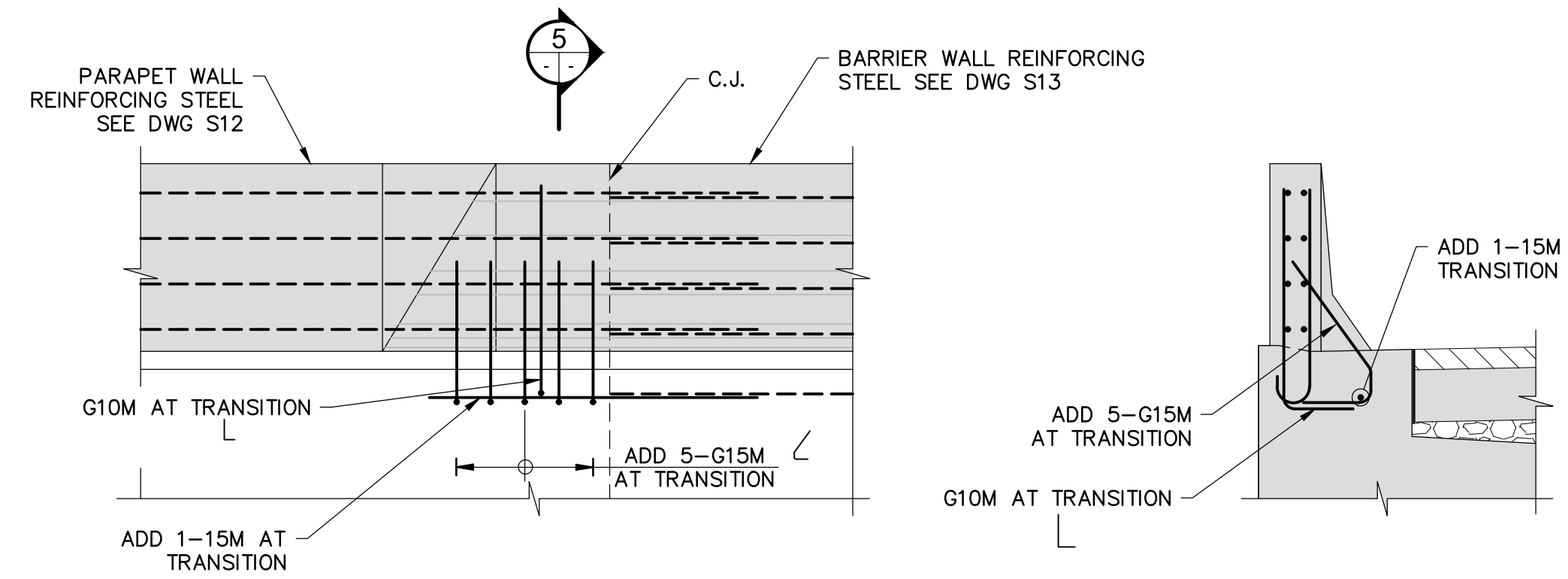
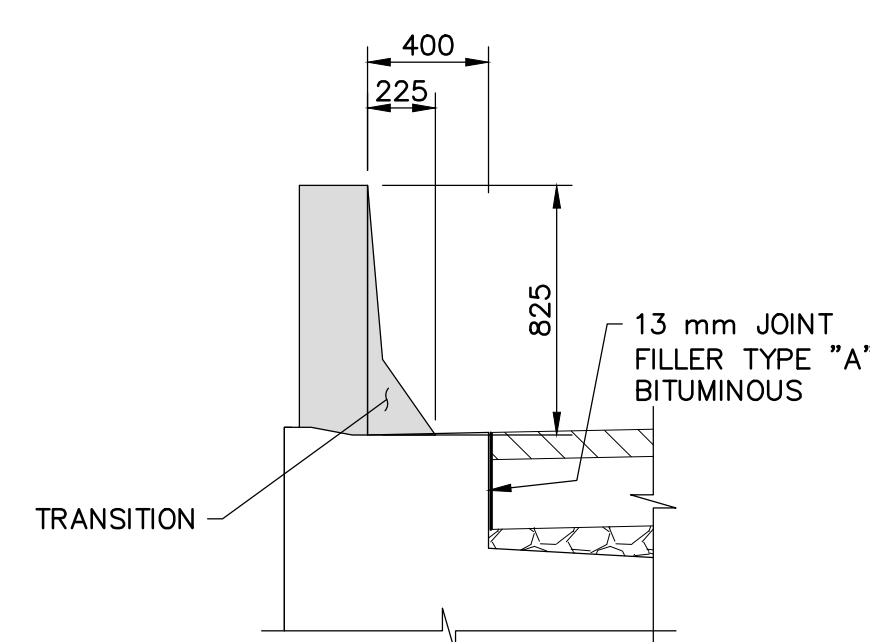
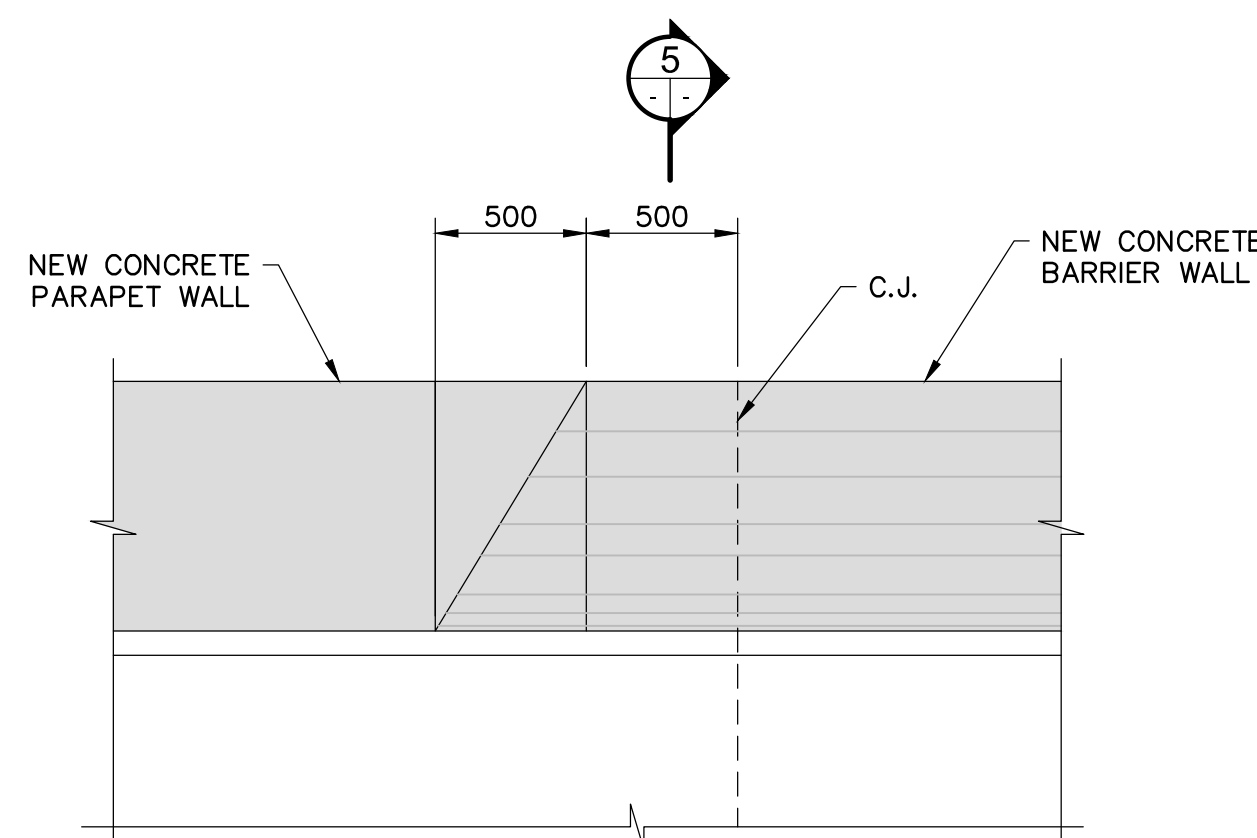
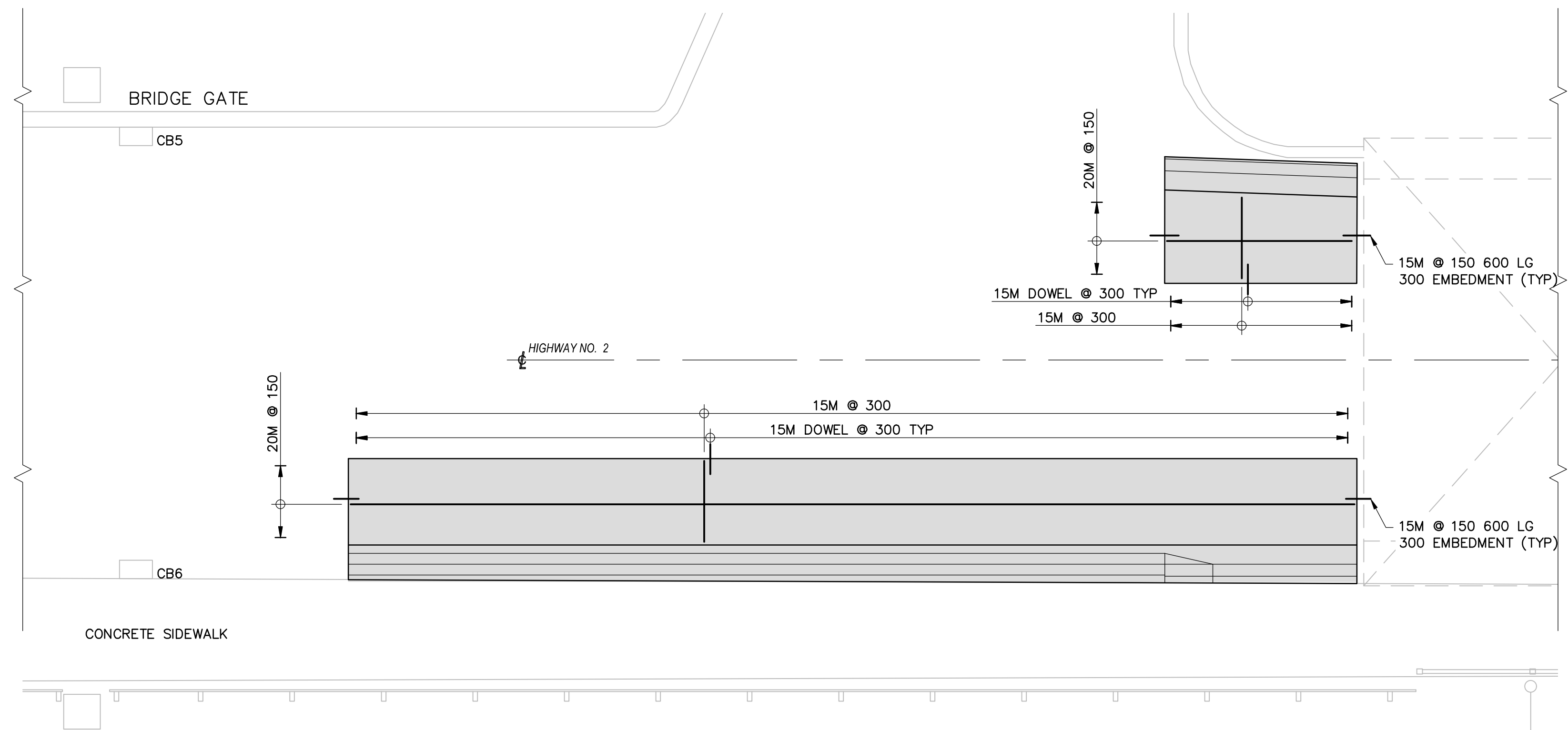
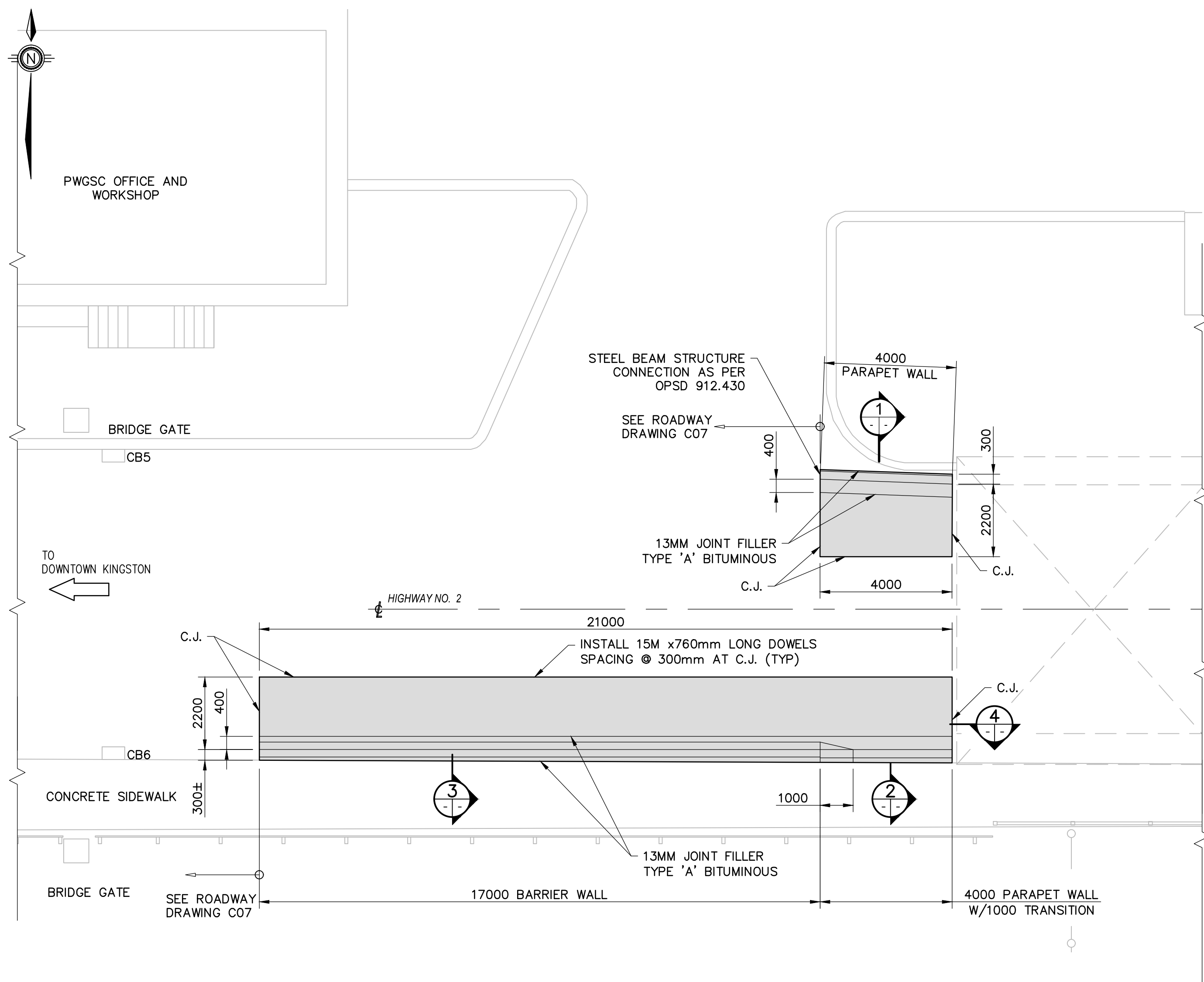
bid project manager  
ELISABETH OHI

project date  
2021/09/10

project no.  
R.101343.040

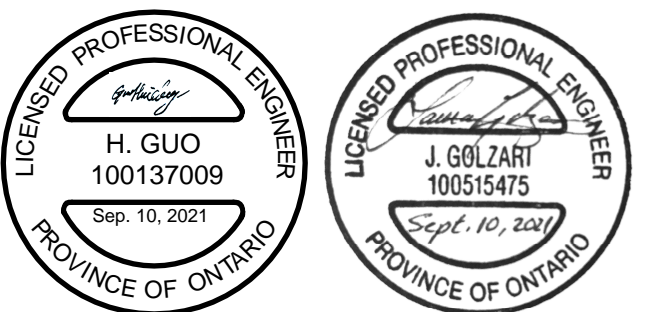
drawing no.  
S09





## NOTES:

- THIS DRAWING SHALL BE READ IN CONJUNCTION WITH DRAWING NOS. C07, S01, S02, S12 AND S13.
- CONTRACTOR TO CONFIRM AND MAINTAIN EXISTING PAVEMENT STRUCTURE.
- ASSUMED PAVEMENT STRUCTURE TO BE VERIFIED IN THE FIELD.



LEGEND	
	EXISTING CONCRETE
	NEW CONCRETE
	GRANULAR "A"
	NEW ASPHALT

1 ISSUED FOR BID SUBMISSION 21/09/10

revision description date

Do not scale drawings. Verify all dimensions and conditions on site and immediately notify the departmental representative of all discrepancies.

A	Detail No.
B	drawing no. - where detail required
C	drawing no. - where detailed

project title  
**KINGSTON** Ontario  
PWGSC  
LaSalle Causeway

## LSC CONCRETE REPAIRS

drawing title  
**BASCULE BRIDGE  
WEST APPROACH CONCRETE  
BARRIER DETAILS**

drawn by VINCE GUO

designed by VINCE GUO

approved by J. GOLZARI

bid ELISABETH OHI project manager

project date 2021/09/10

project no. R.101343.040

drawing no. S10