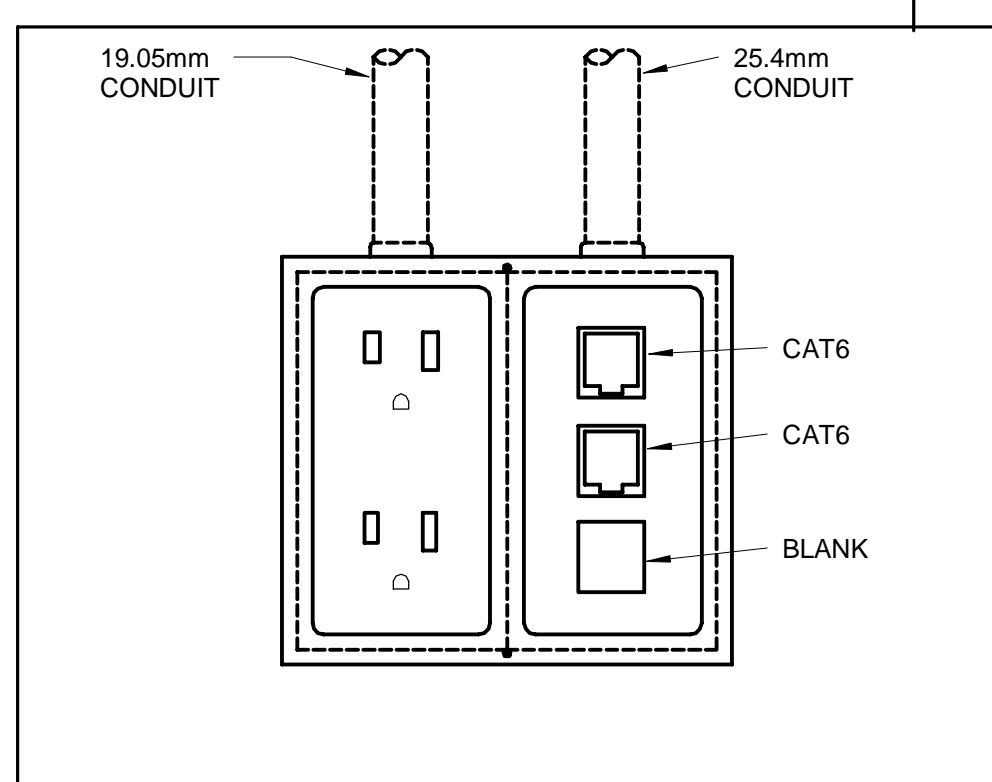
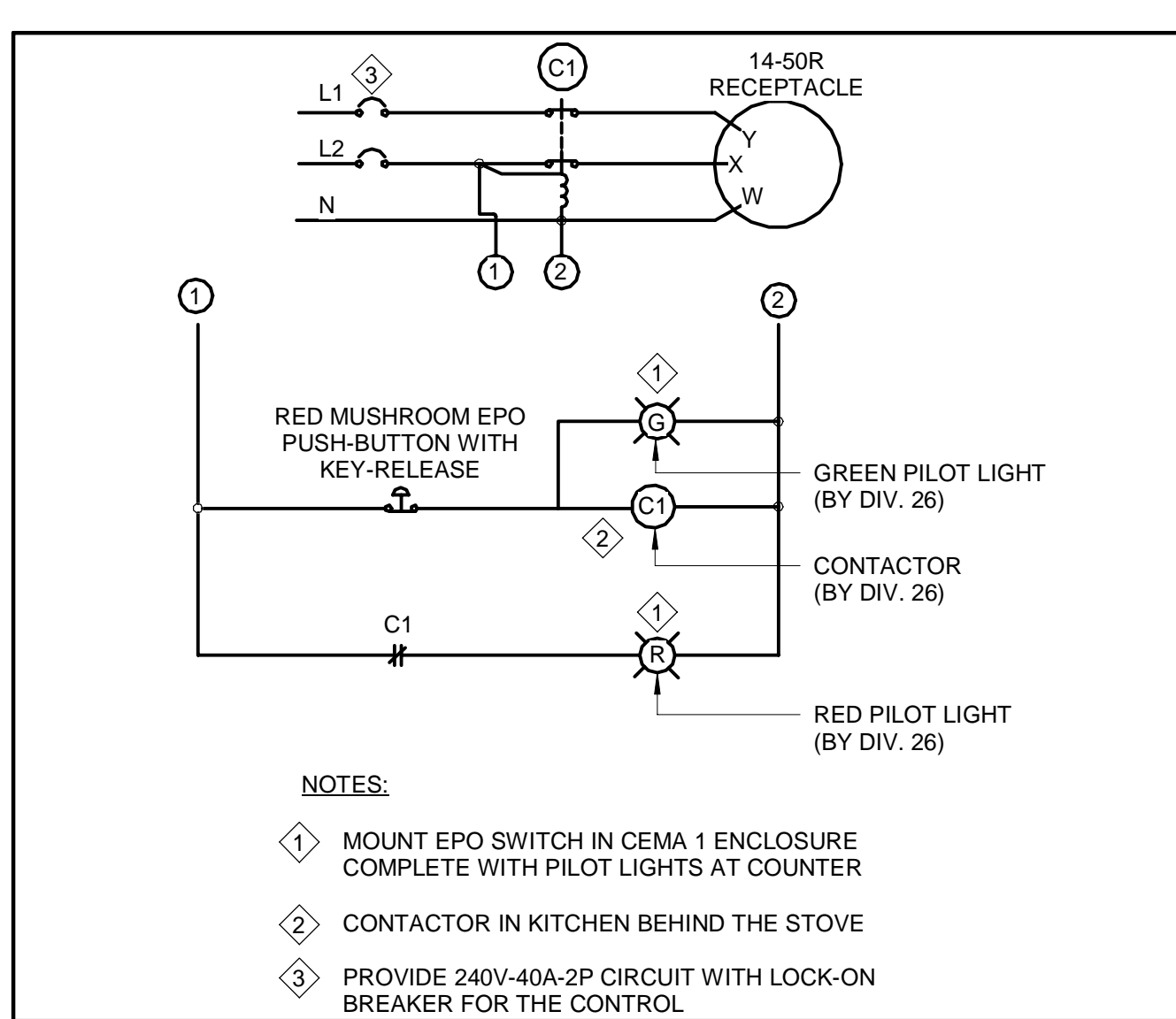


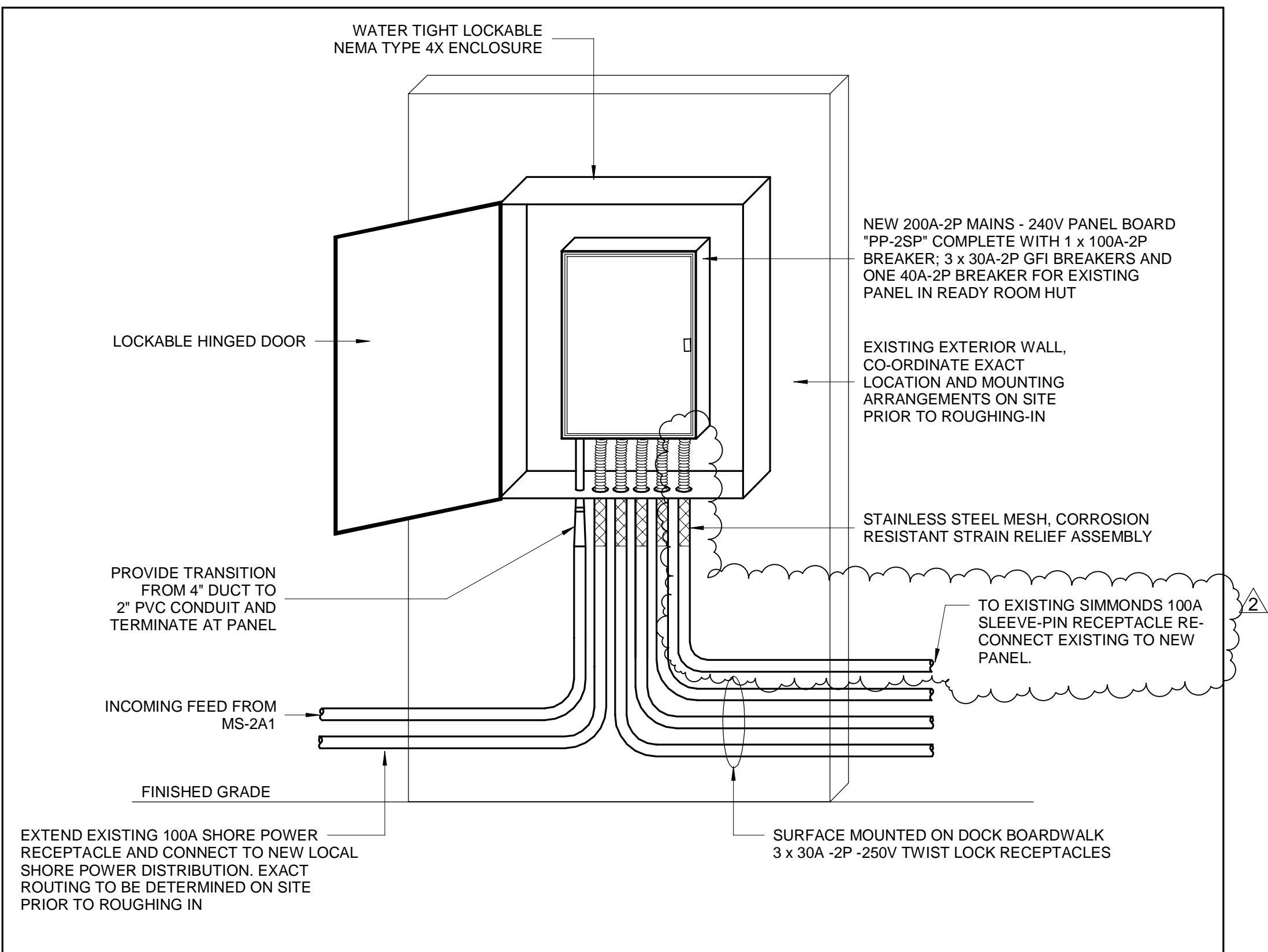
1 TYPICAL GROUNDING RISER DIAGRAM
E901 1 : 100



2 POWER/COMM
E901 1 : 10



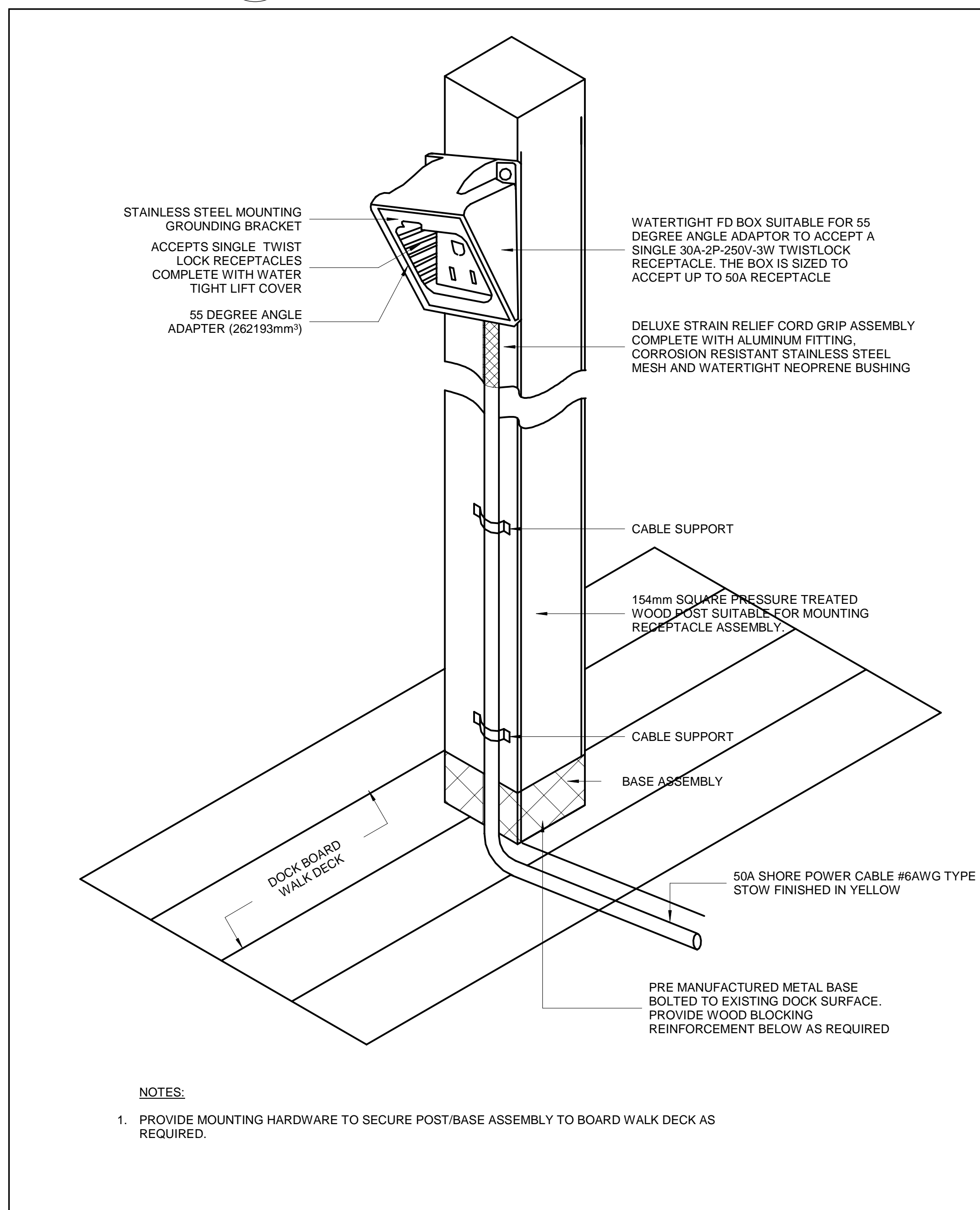
3 EMERGENCY POWER OFF PUSHBUTTON CONTROL DIAGRAM
E901 N.T.S.



4 NEW LOCAL SHORE POWER DISTRIBUTION "PP-2SP"
E901 N.T.S.



6 EXISTING POWER DISTRIBUTION IN READY ROOM HUT TO REMIN AS CONNECTED
E901 N.T.S.



5 RECEPTACLE MOUNTED ON PEDESTAL
E901 N.T.S.

TAYLOR HAZELL ARCHITECTS LTD.

333 Adelaide Street West
5th Floor
Toronto, Ontario, M5V
1R5
Telephone: (416)
862-2694
Facsimile: (416) 862-8401

CROSSEY
ENGINEERING
LTD.
2255 Sheppard Ave East
Suite E-331
Toronto, ON M2J 4Y1
Telephone: (416)
416.497.3111 www.cel.ca

wsp

2300 Yonge Street,
Suite 2300
Toronto, ON Canada
M4P 1E4
t. 416.487.5256
f. 416.487.9766
wsp.com

© WSP CANADA INC.
UNAUTHORIZED USE IS PROHIBITED

No.	Revision Description	Date
2	ISSUED FOR ADDENDUM E-01	2021-10-12
1	ISSUED FOR TENDER	2021-07-26

Do not scale drawings.
Verify all dimensions and conditions on site and
immediately notify the Departmental Representative of all
discrepancies.

project
titre
titre du
projet

PORT WELLER SEARCH AND RESCUE STATION

ONTARIO DEPARTMENT OF FISHERIES AND OCEANS
SEARCH & RESCUE STATION ST. CATHARINES PARTIAL
DEMOLITION, ADDITION AND RESTORATION

ST. CATHARINES ONTARIO

drawing
titre
titre du
dessin

ELECTRICAL DETAILS

drawn by
dessiné par

R.E.

designed by
conçu par

A.O.

approved by
approuvé par

D.S.

bid
offre

KG

project manager
administrateur
de projets

project date
date du projet

2021-07-26

project no.
no. du projet

R.079827.001

drawing no.
dessin no.

E901