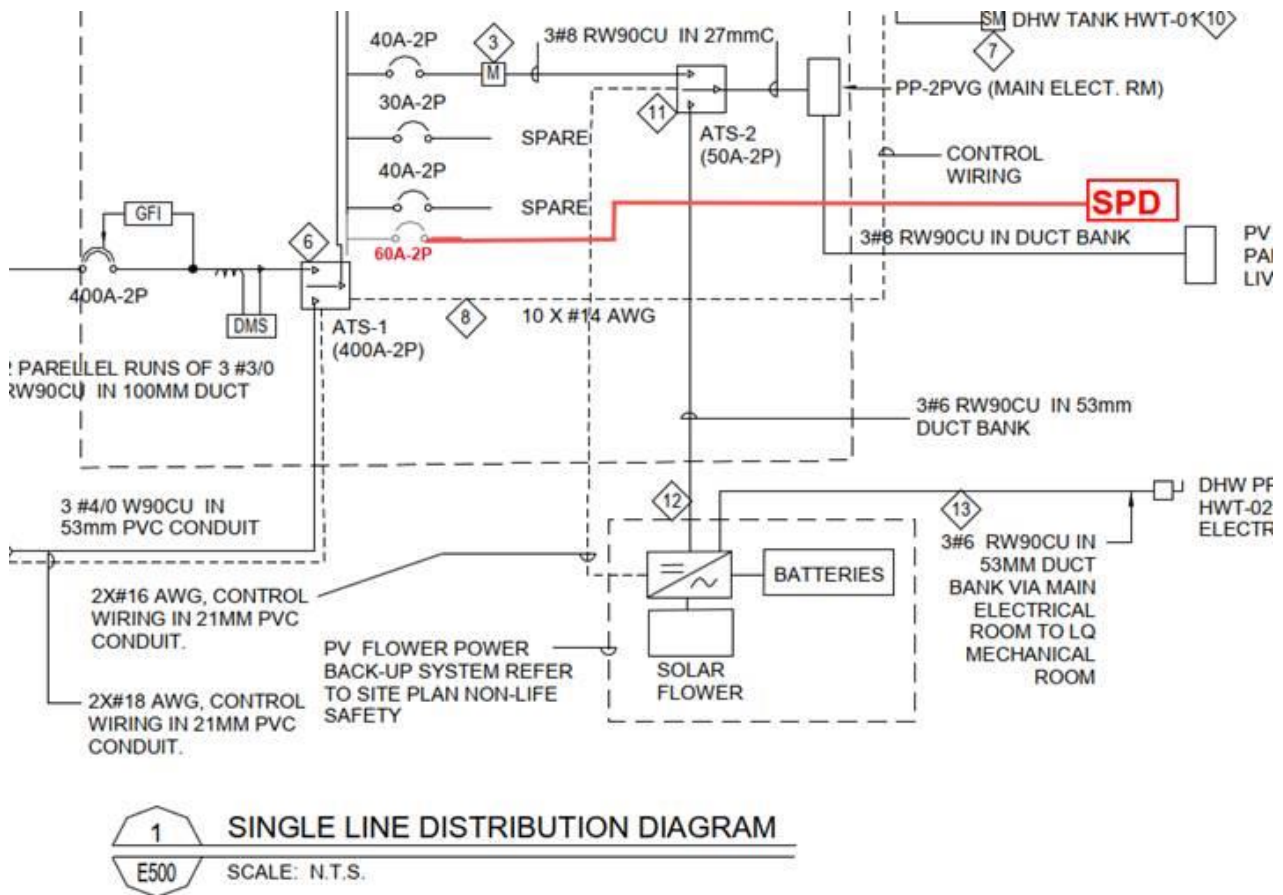


ADDENDUM NO. 6

Drawing

1. Drawing E500: Provide one (1) additional SPD on load side of service entrance board DP-2A1. SPD shall be 160KA per phase and 80KA per mode. Provide one (1) additional 60A-2P breaker in Service entrance board DP-2A1 to feed the new SPD.



Specifications

1. Delete Specification Section 26 28 17 Surge Protection Device Protection Device in its entirety and replace with revised Specification Section 26 28 17 Surge Protection Device Protection Device, see attached.

END OF ADDENDUM NO. 6