



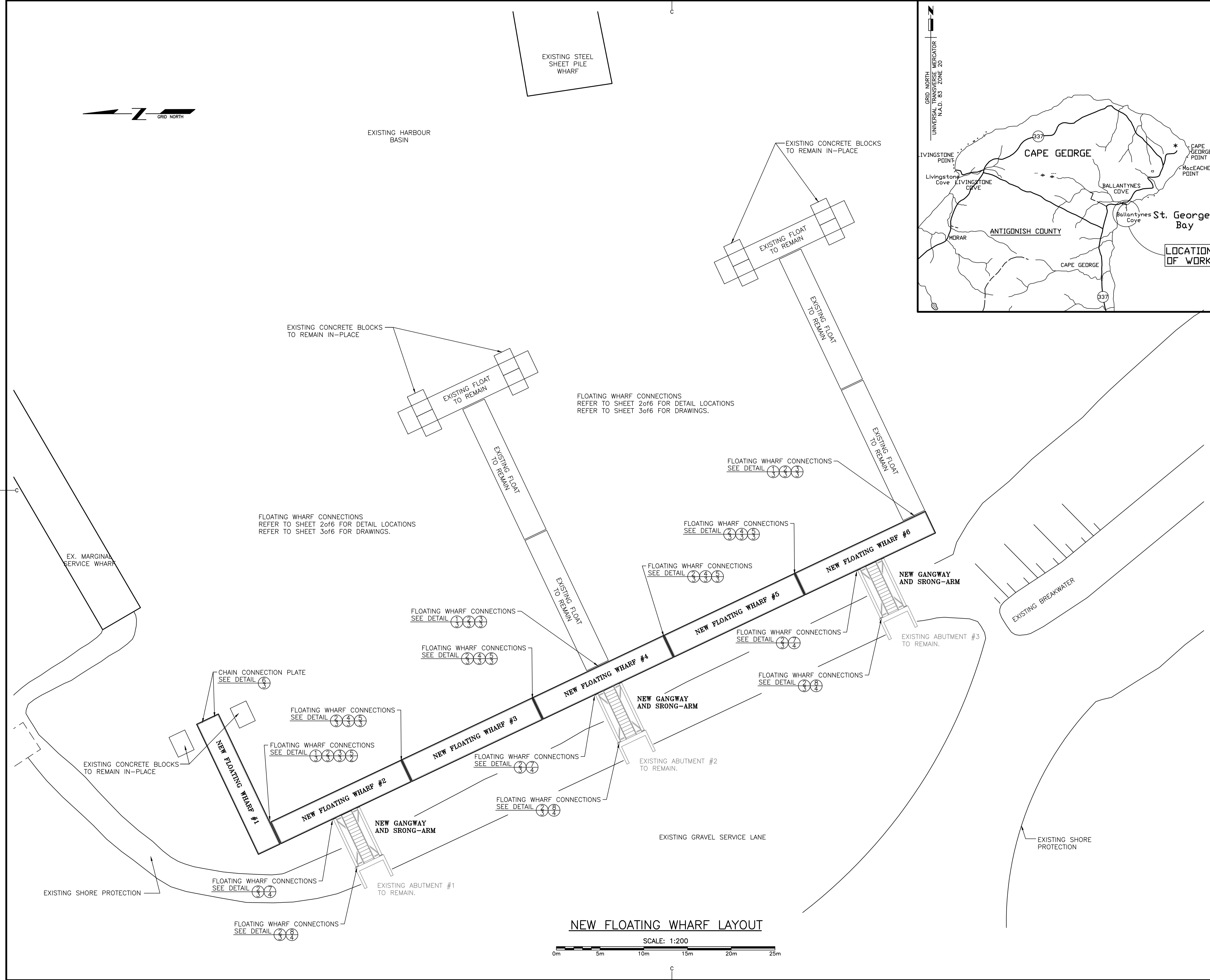
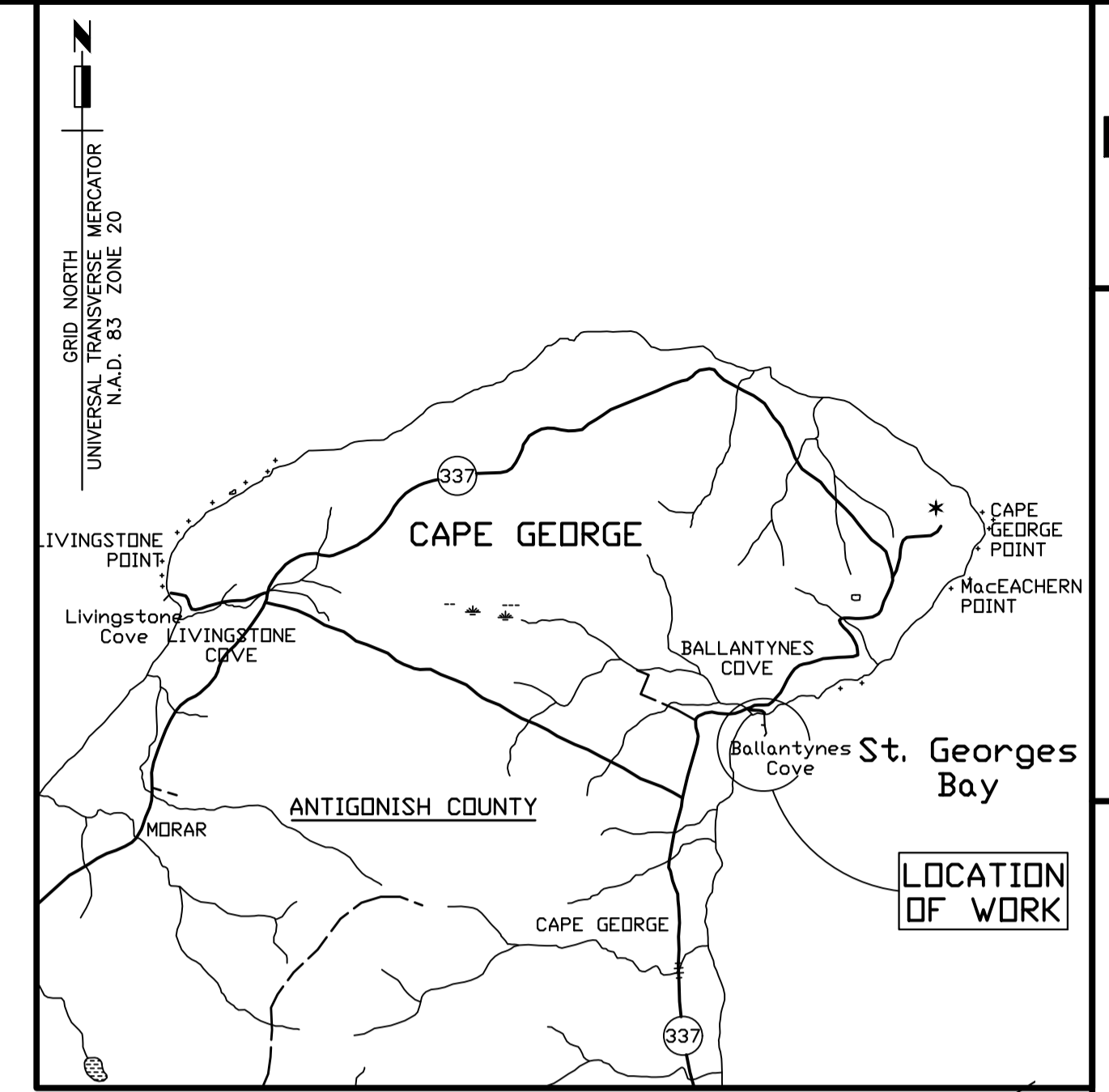
Fisheries and Oceans  
Canada

Pêches et Océans  
Canada

**CONSTRUCTION & INSTALLATION OF NEW FLOATING WHARVES  
BALLANTYNE'S COVE WHARF  
ANTIGONISH COUNTY  
NOVA SCOTIA**

**PROJECT NO. C2-00363**

**Canada**



**NEW FLOATING WHARF LAYOUT**

SCALE: 1:200  
0m 5m 10m 15m 20m 25m

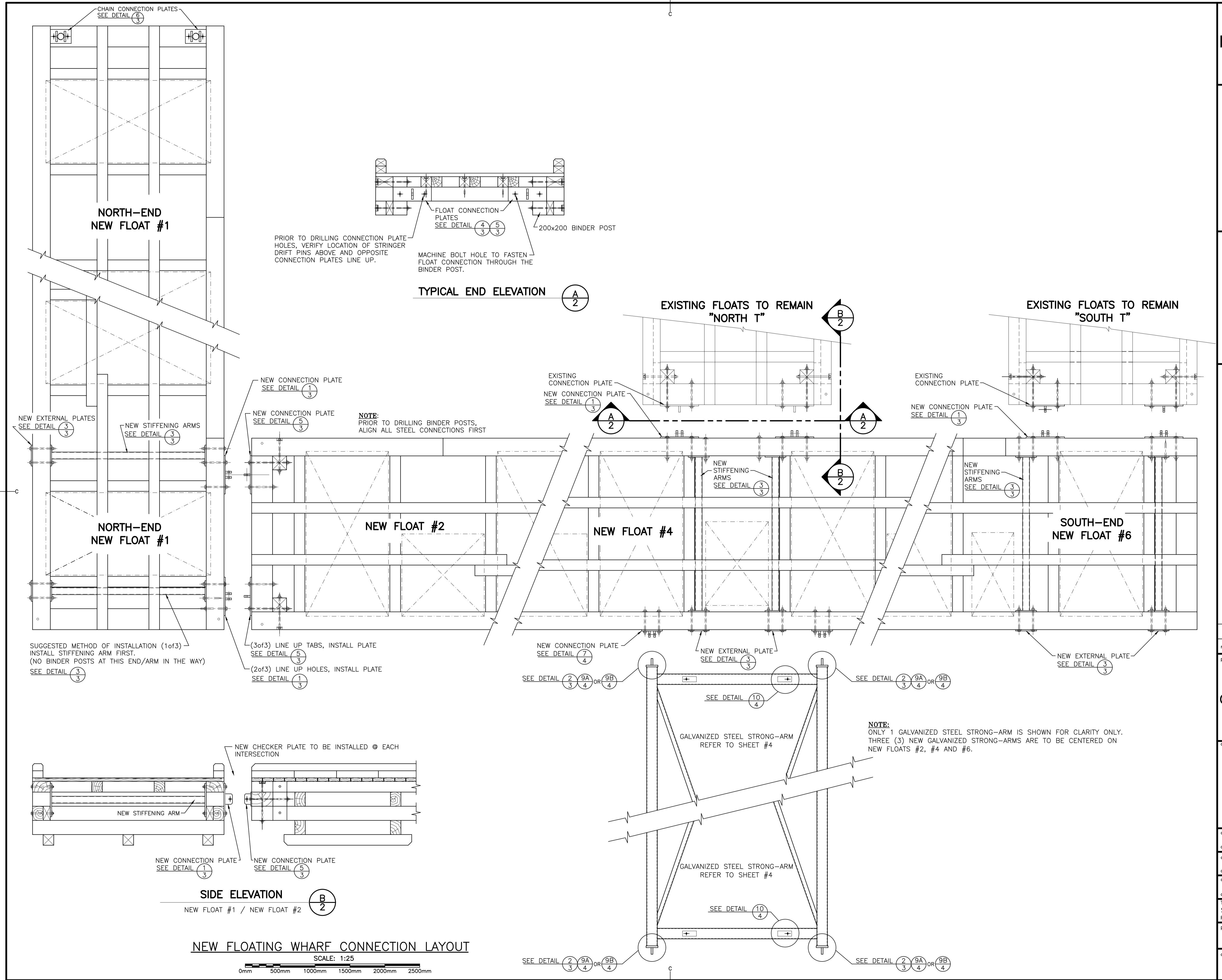
CO1	ISSUED FOR TENDER	AUG/13 2021
revisions		date

**CONSTRUCTION & INSTALLATION OF NEW FLOATING WHARVES BALLANTYNE'S COVE ANTIGONISH CO., NS**

**NEW FLOAT LAYOUT**

designed	SCH STAFF	conçu
date	JULY 12, 2021	
drawn	SCH STAFF	dessiné
date	JULY 15, 2021	
approved		approuvé
date		
Tender	SM	Soumission
PWGSC Project Manager	Administrateur de projets TPSOC	
project number	C2-00363	no. du projet
drawing no.	1 OF 6	no. du dessin

666617-0001-D-41-DWG-000-0002-01



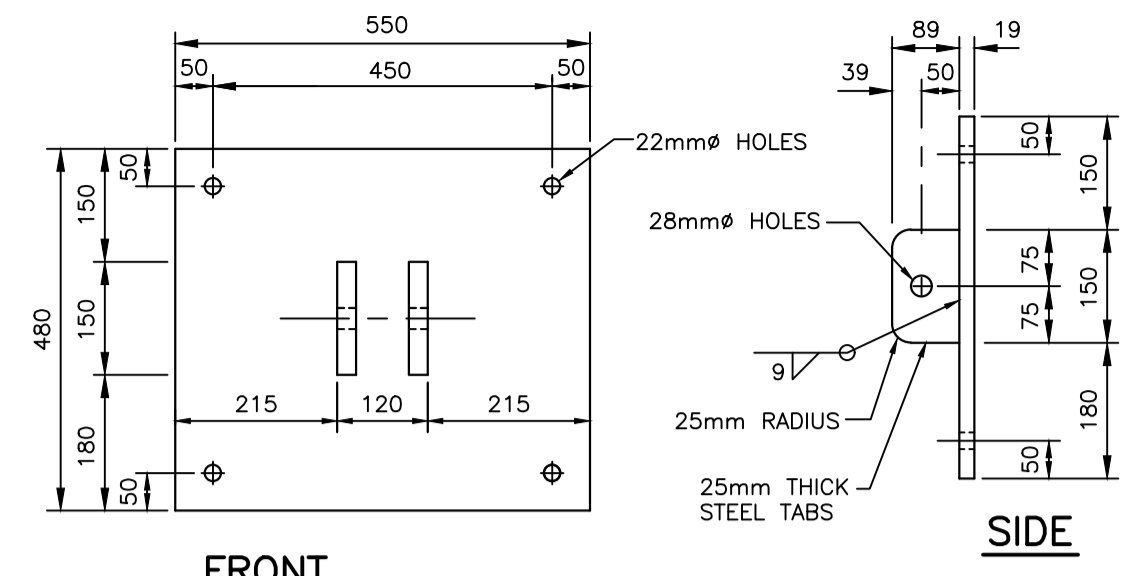
CO1	ISSUED FOR TENDER	AUG/13 2021
revisions		date
project		project

**CONSTRUCTION & INSTALLATION OF NEW FLOATING WHARVES BALLANTYNE'S COVE ANTIGONISH CO., NS**

**NEW FLOAT LAYOUT SECTIONS & DETAILS**

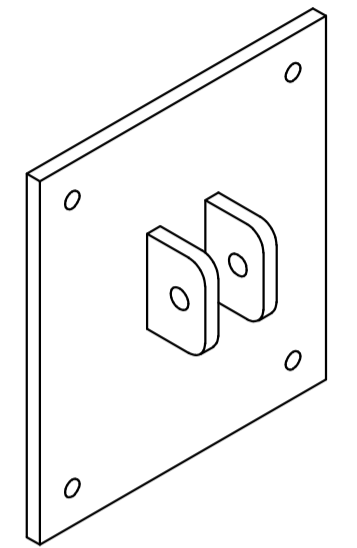
designed	SCH STAFF	conçu
date	JULY 12, 2021	
drawn	SCH STAFF	dessiné
date	JULY 15, 2021	
approved		approuvé
date		
Tender	S.M.	Soumission
project number	PWGSC Project Manager / Administrateur de projets TPSOC	no. du projet
	<b>C2-00363</b>	
drawing no.		no. du dessin
	<b>2 OF 6</b>	

666617-0001-D-41-DWG-000-0004-01

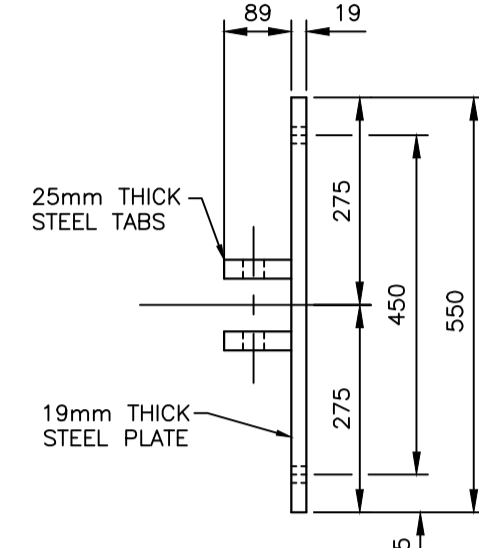


FRONT

SIDE



ISOMETRIC VIEW

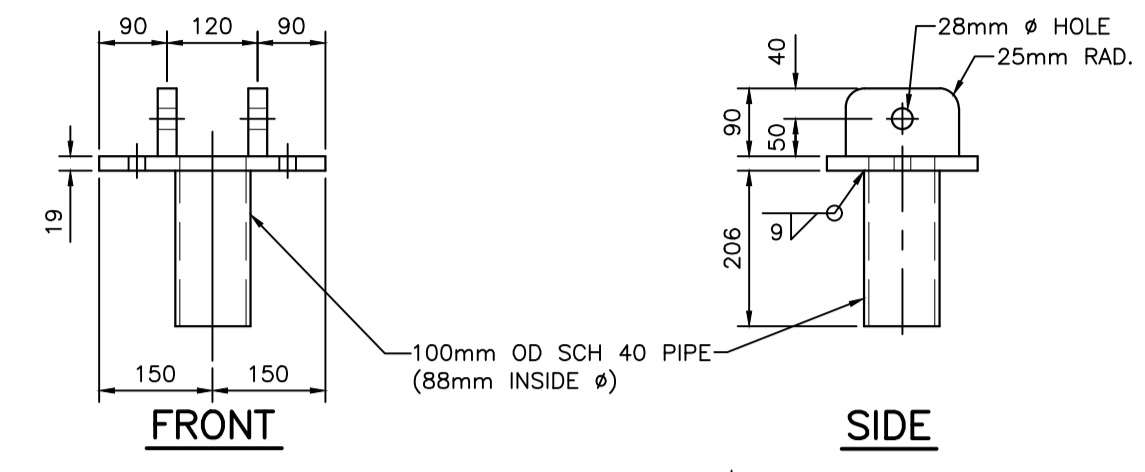
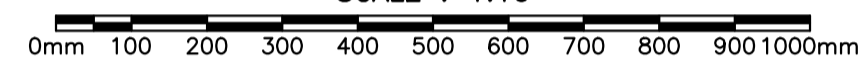


TOP

DETAIL 1/3

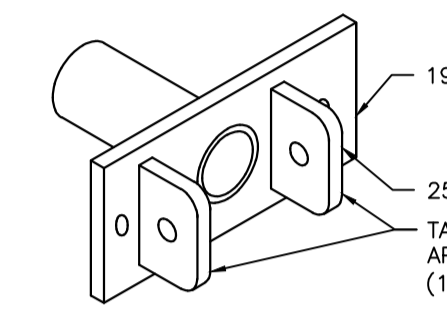
FLOAT CONNECTION PLATE (6 REQUIRED)

SCALE : 1:10

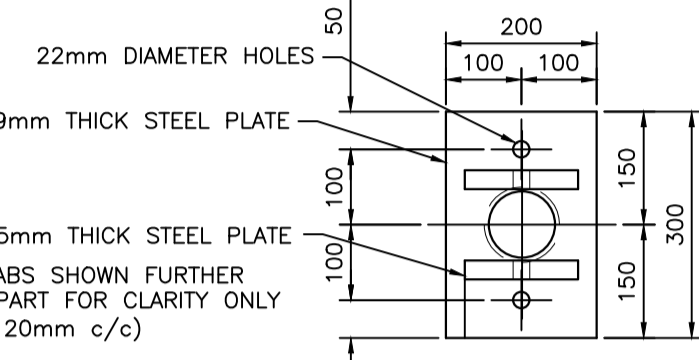


FRONT

SIDE



ISOMETRIC VIEW

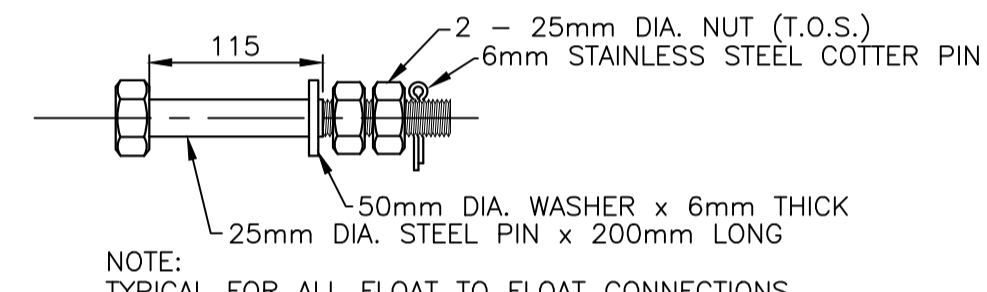
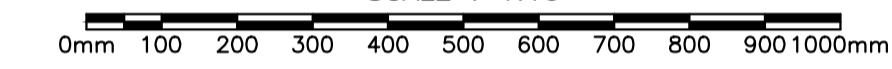


TOP

DETAIL 6/3

CHAIN CONNECTION PLATE (2 REQUIRED)

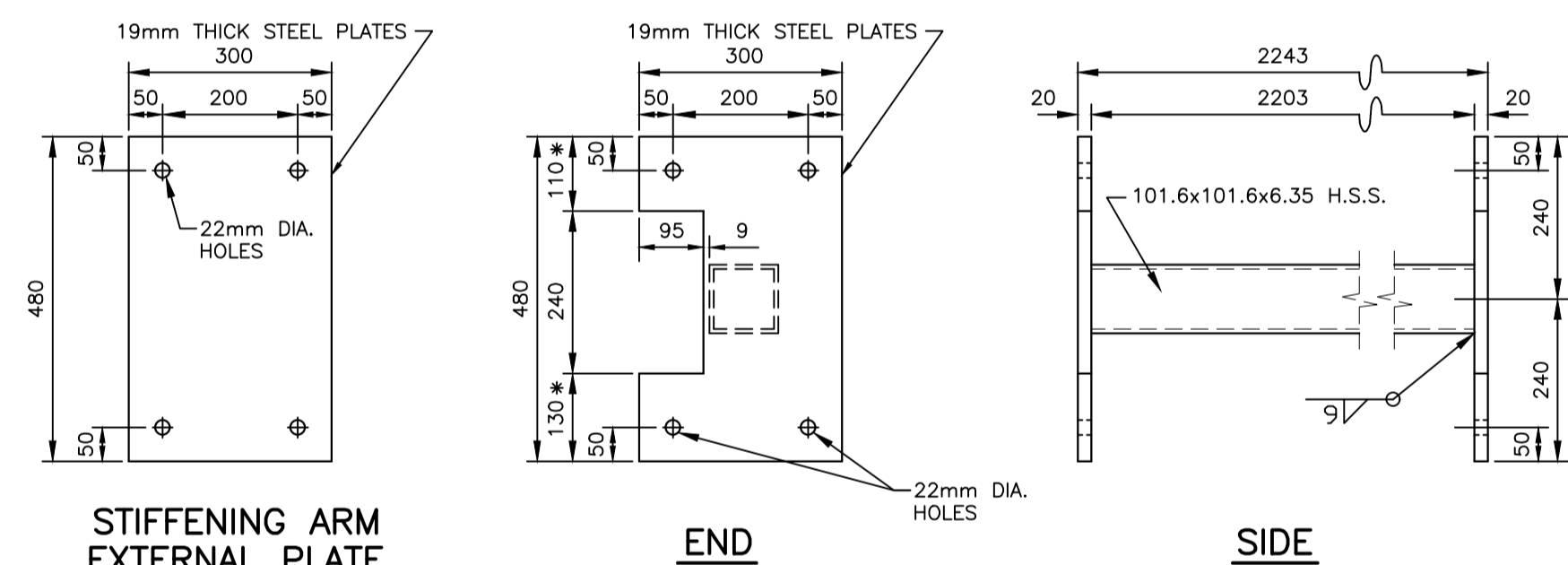
SCALE : 1:10



DETAIL 2/3

FLOAT TO FLOAT CONNECTION BOLTS (28 REQUIRED)

SCALE: 1:5

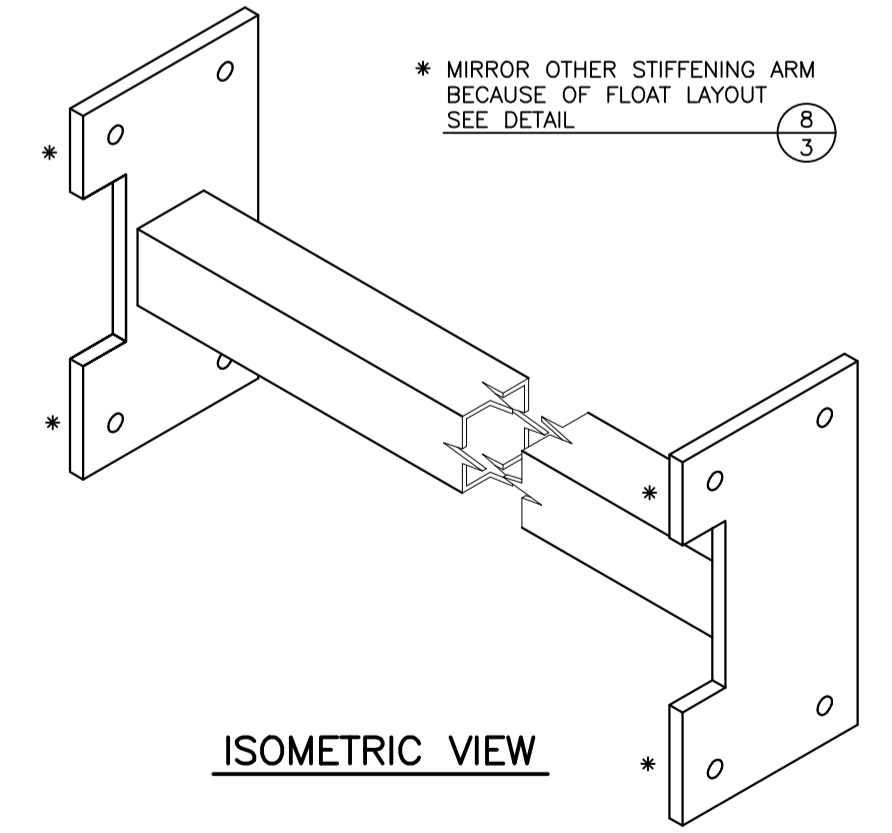


FRONT

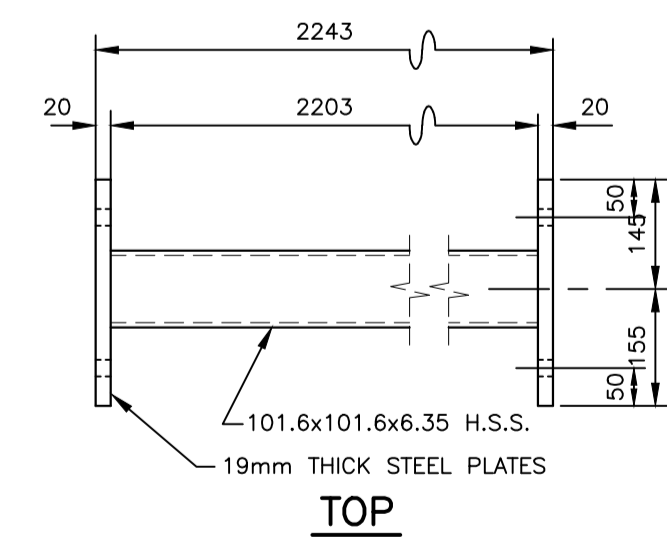
END

SIDE

STIFFENING ARM EXTERNAL PLATE (6 REQUIRED)



ISOMETRIC VIEW

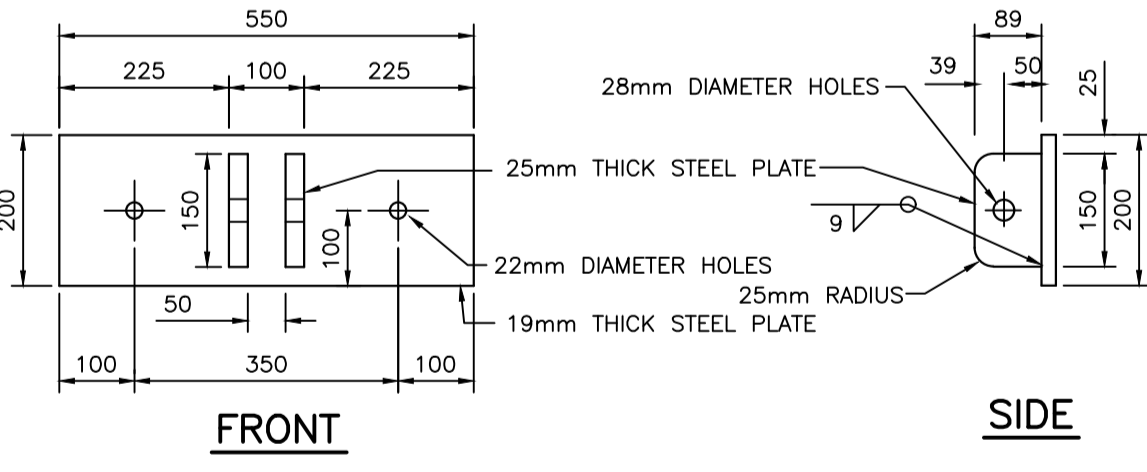
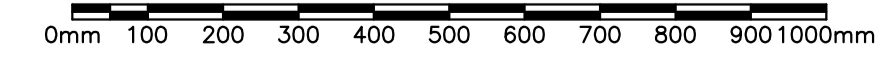


TOP

DETAIL 3/3

FLOAT STIFFENING ARM (6 REQUIRED)

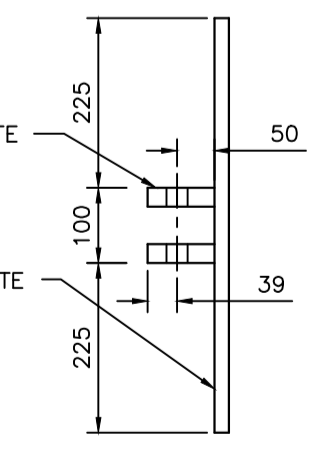
SCALE : 1:10



FRONT

SIDE

ISOMETRIC VIEW

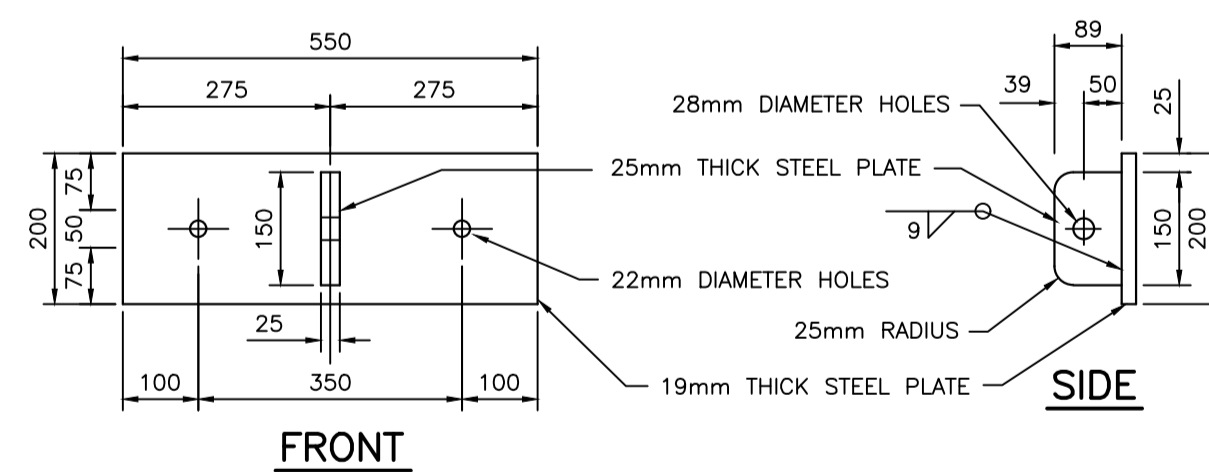
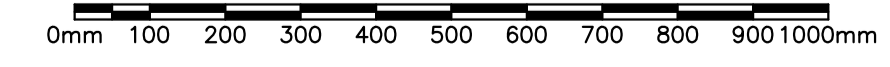


TOP

DETAIL 4/3

FLOAT CONNECTION PLATE (8 REQUIRED)

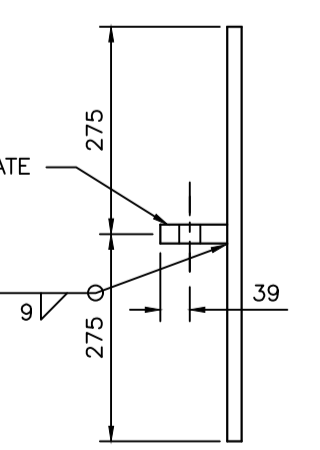
SCALE : 1:10



FRONT

SIDE

ISOMETRIC VIEW

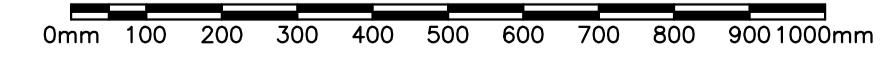


TOP

DETAIL 5/3

FLOAT CONNECTION PLATE (10 REQUIRED)

SCALE : 1:10



C01	ISSUED FOR TENDER	AUG/13 2021
revisions		date

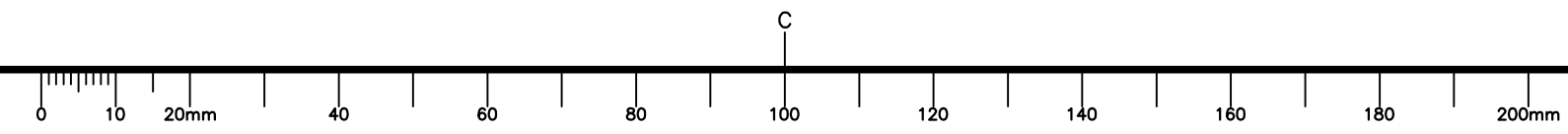
CONSTRUCTION & INSTALLATION OF NEW FLOATING WHARVES BALLANTYNE'S COVE ANTIGONISH CO., NS

NEW FLOATS PLAN VIEW, SECTIONS & DETAILS

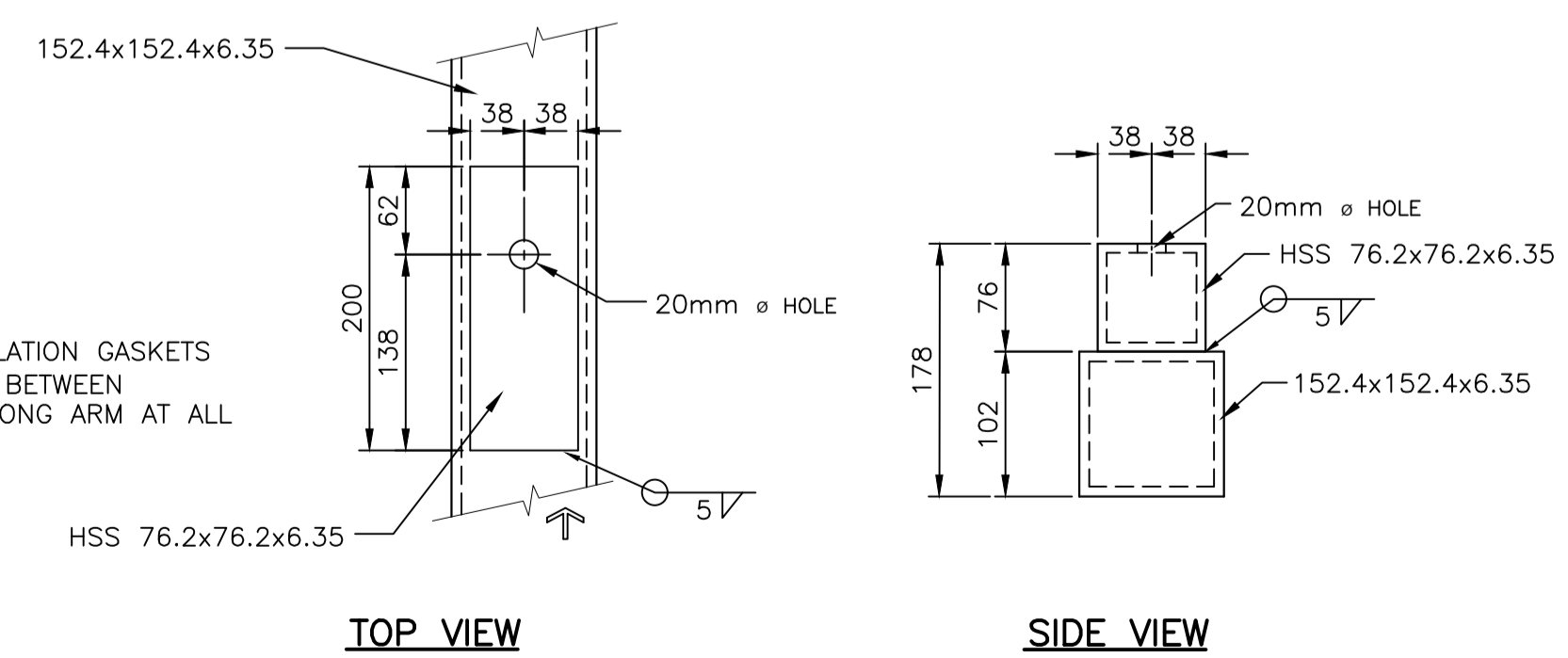
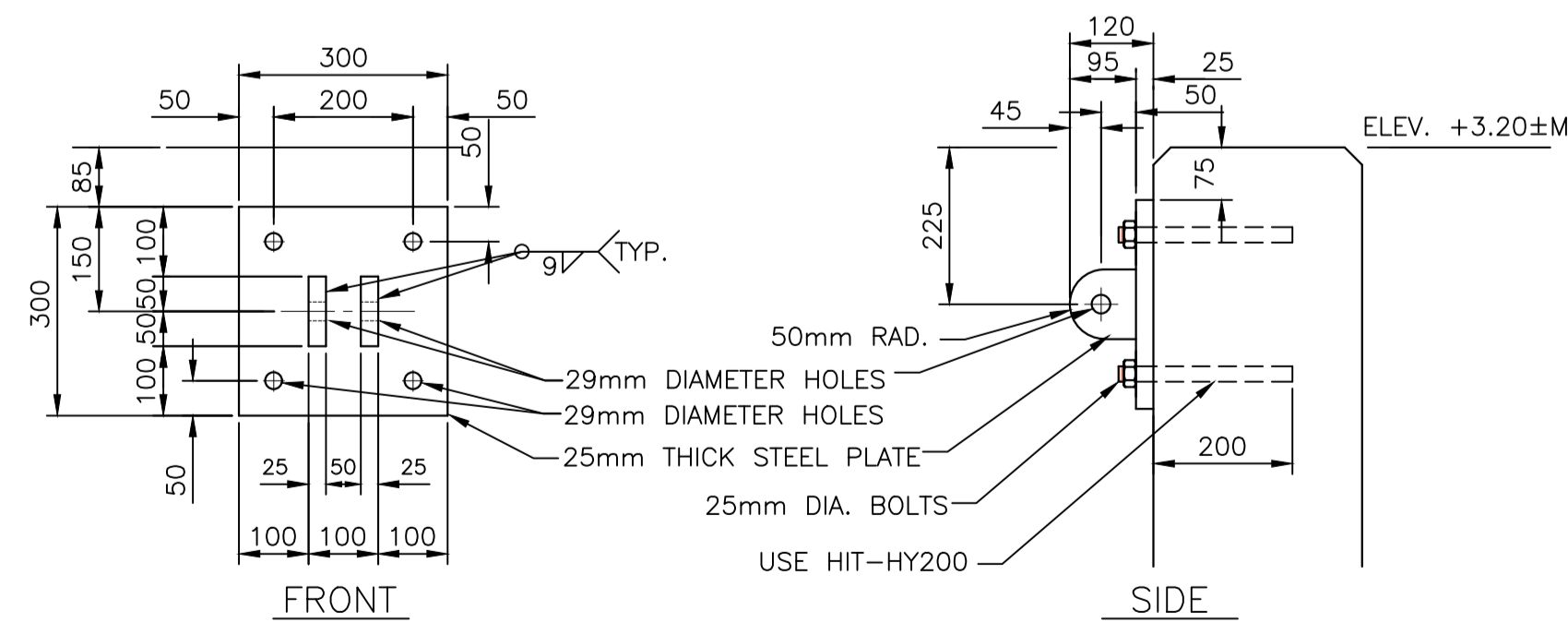
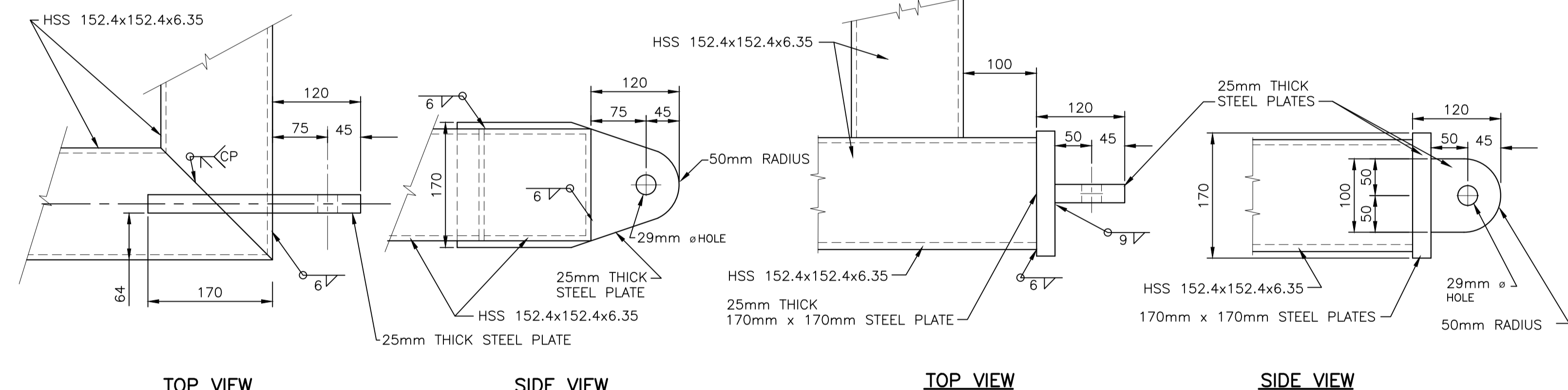
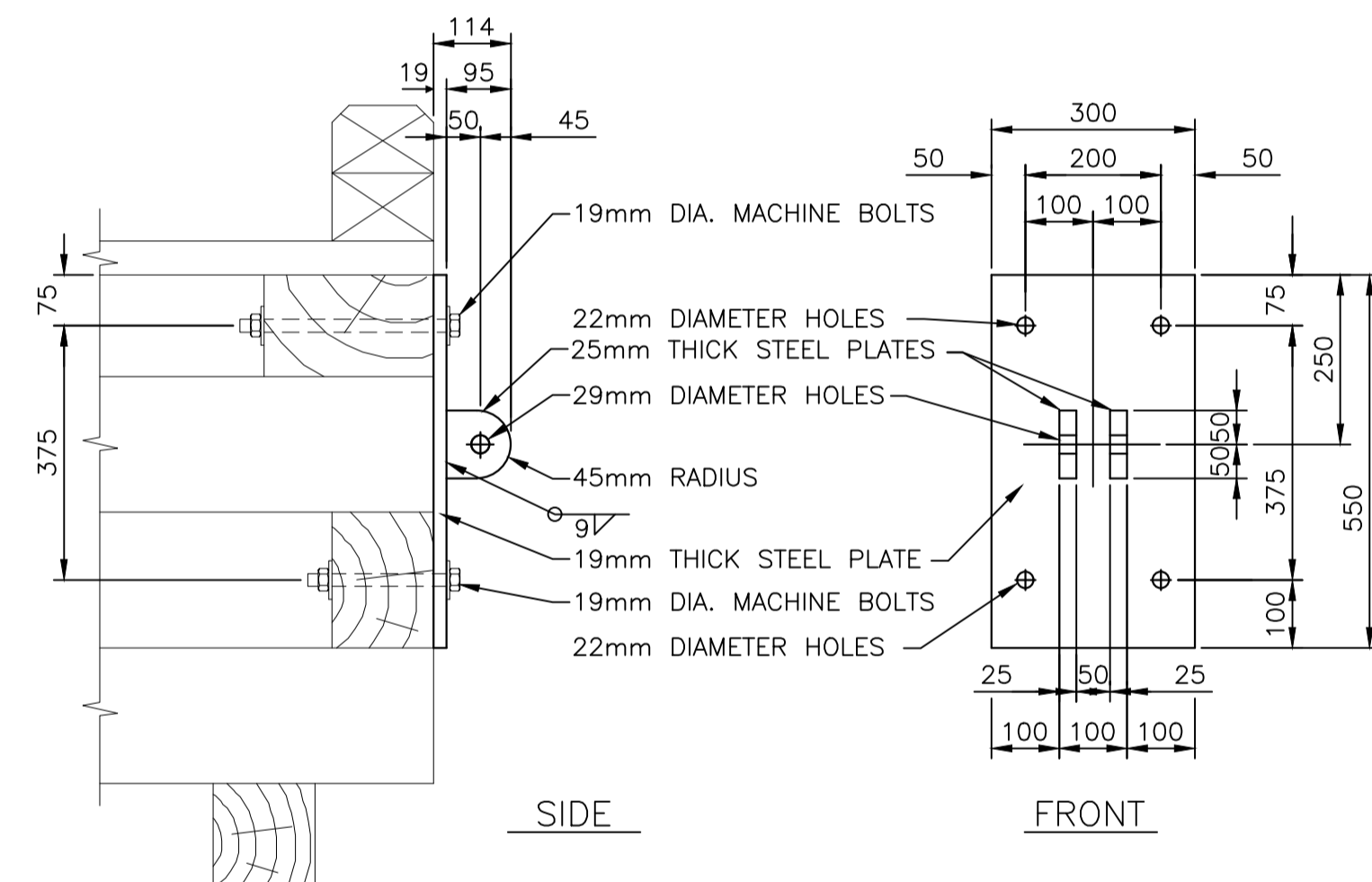
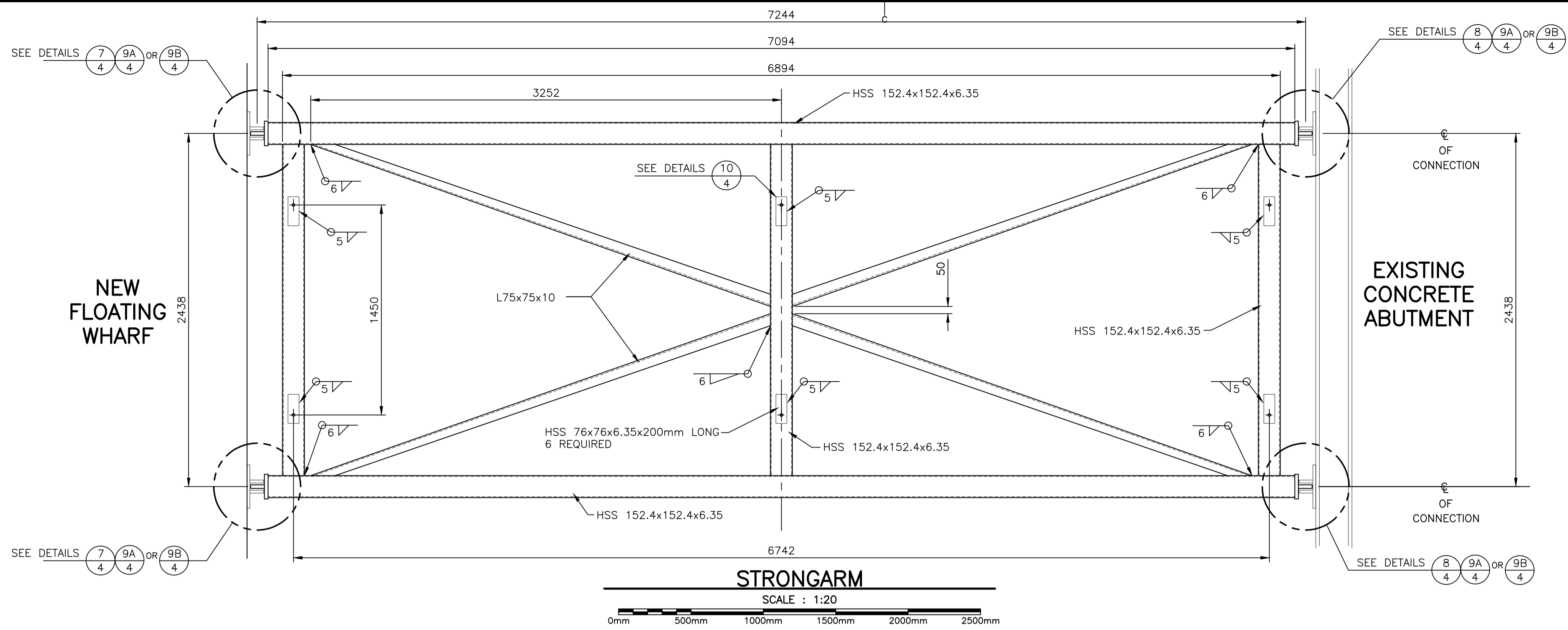
designed	SCH STAFF	conçu
date	JULY 12, 2021	
drawn	SCH STAFF	dessiné
date	JULY 15, 2021	
approved		approuvé
date		
Tender	S.M.	Soumission
PWGSC Project Manager	Administrateur de projets TPSOC	
project number		no. du projet

C2-00363

drawing no.		no. du dessin
-------------	--	---------------



E668617-0001-D-41-DWG-000-0004-01

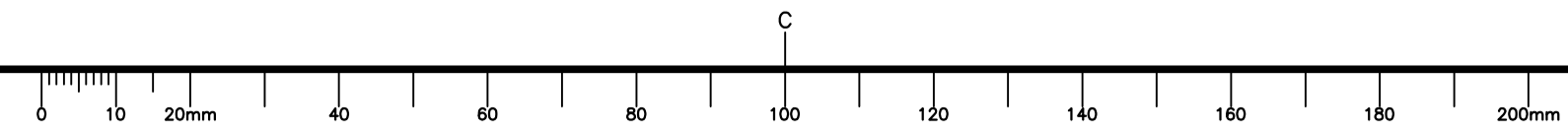


CO1	ISSUED FOR TENDER	AUG 13 2021
revisions		date
project		projet

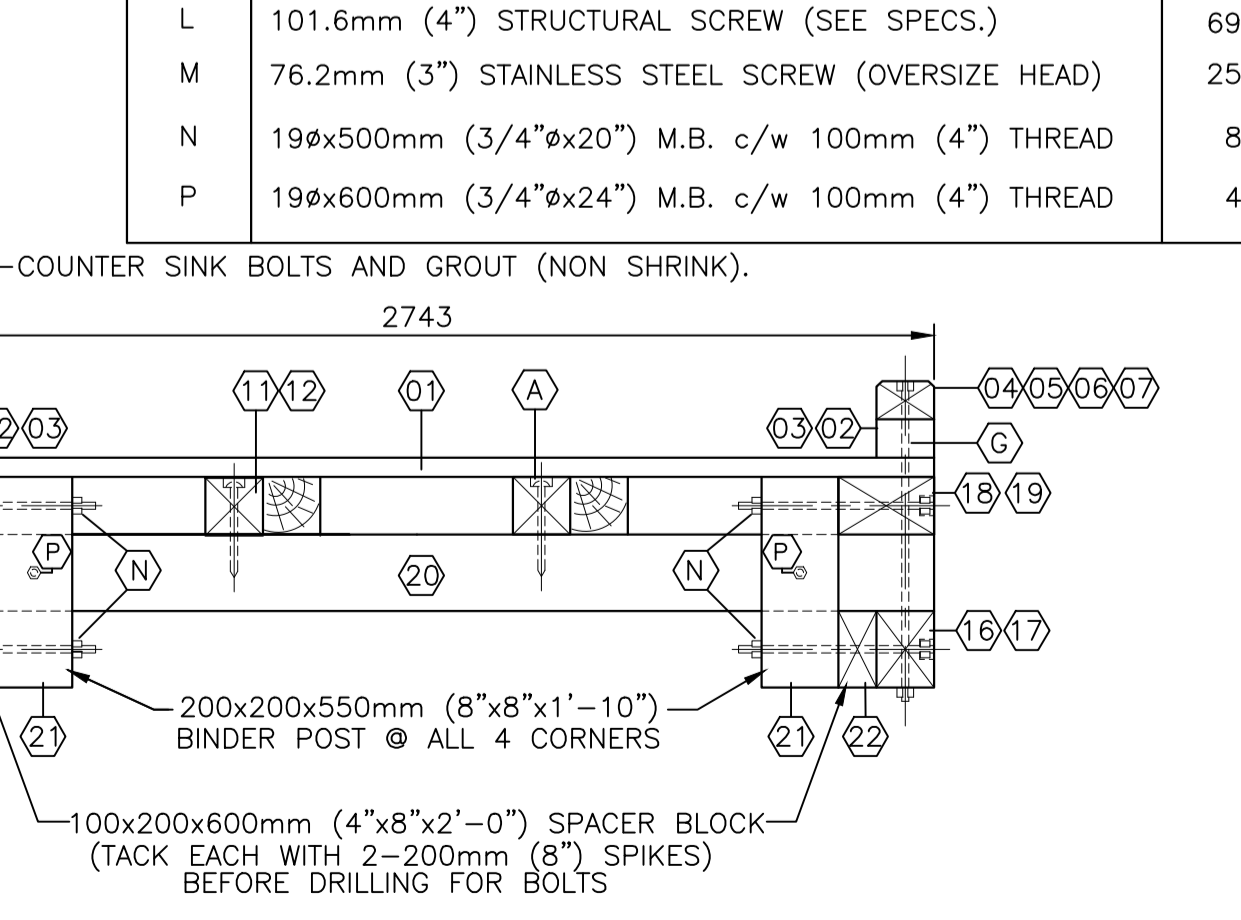
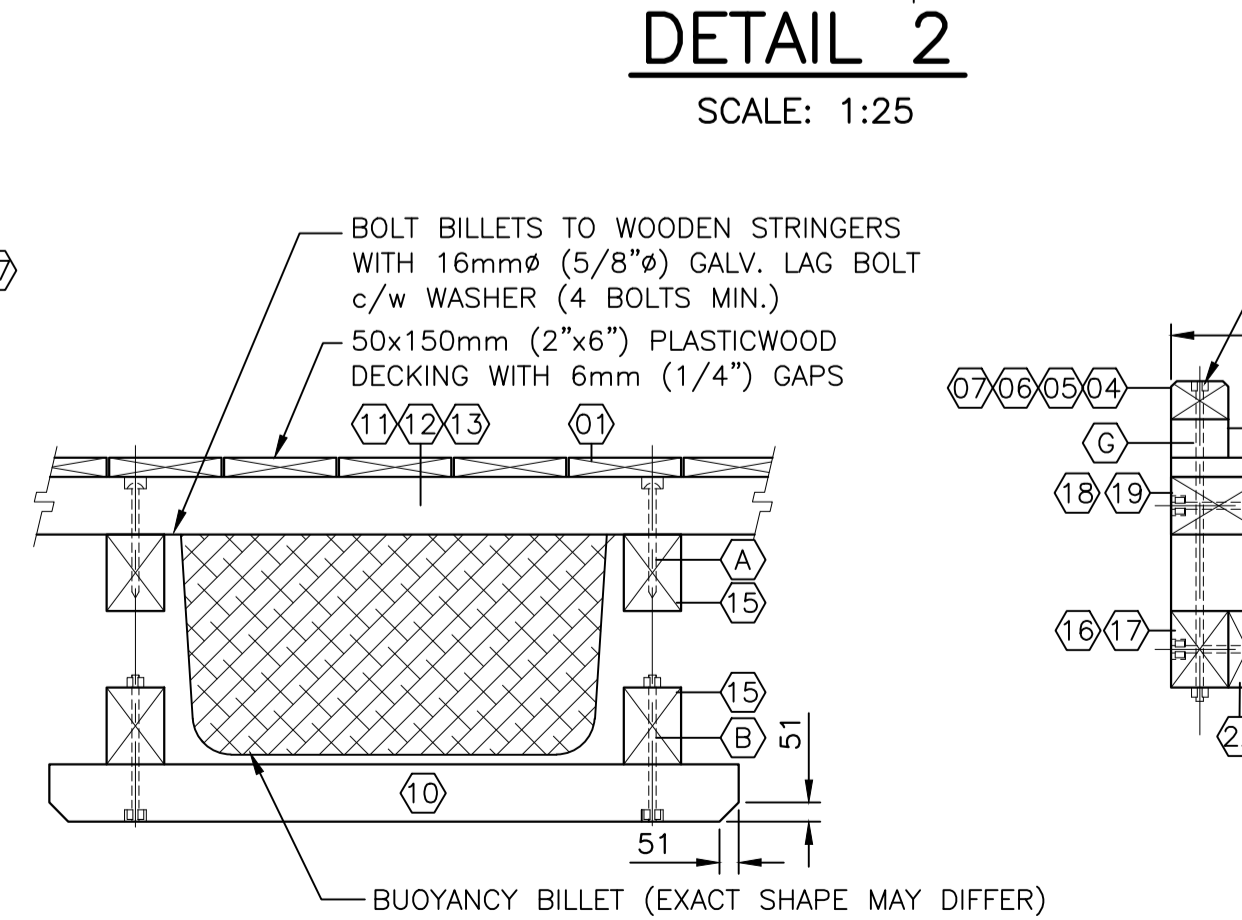
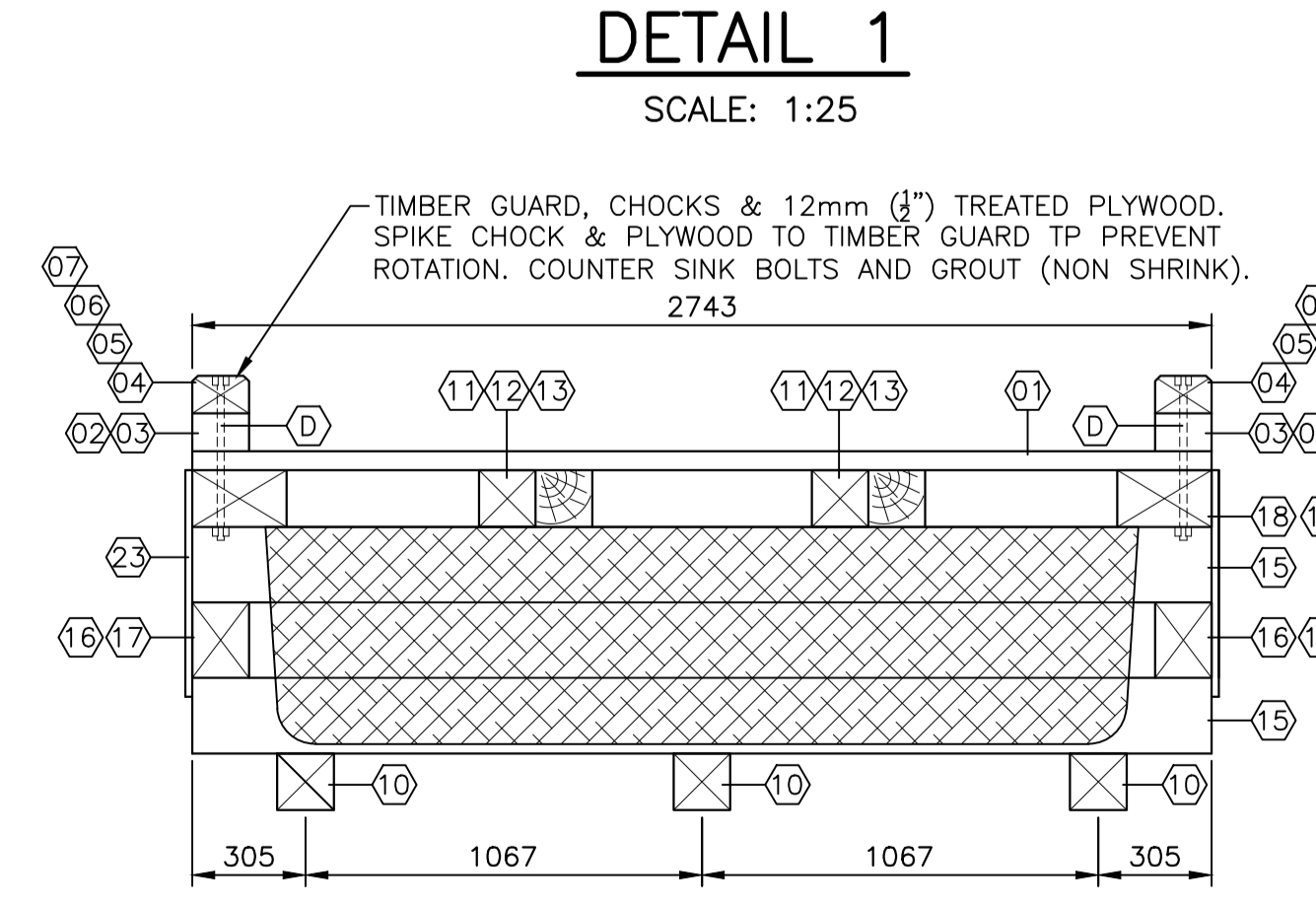
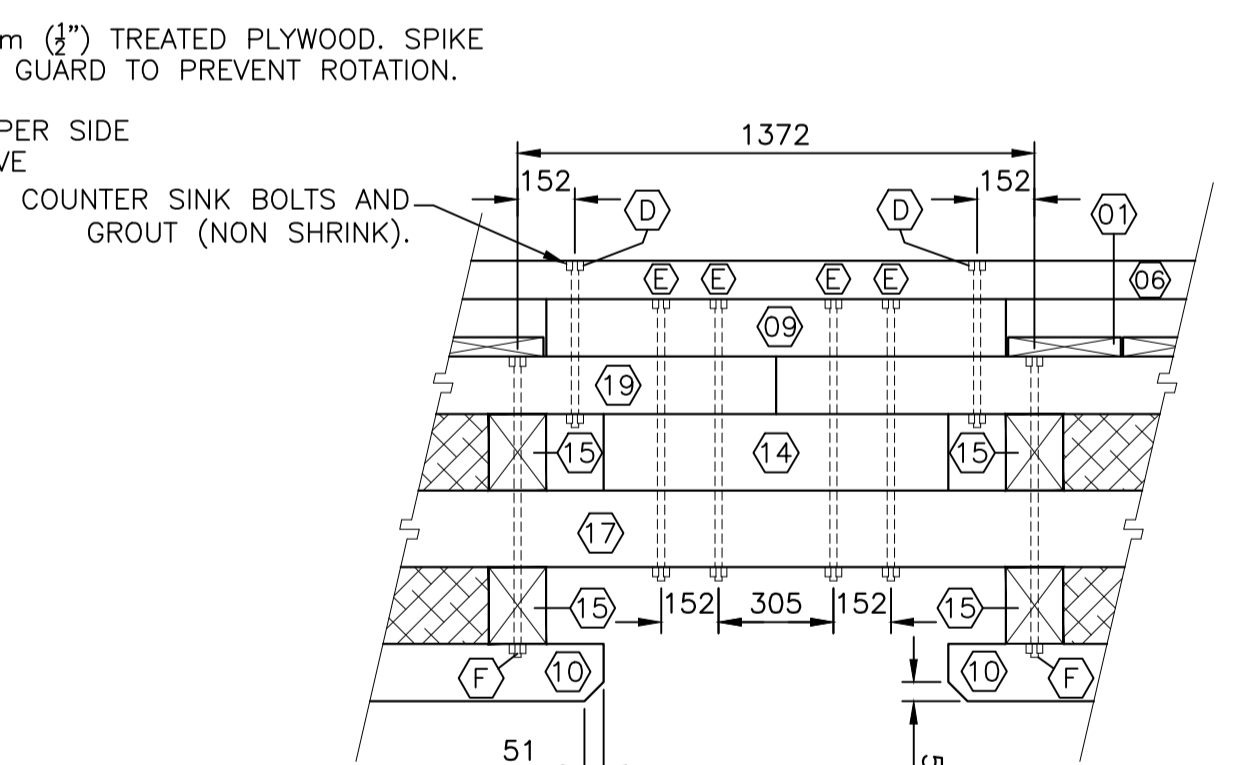
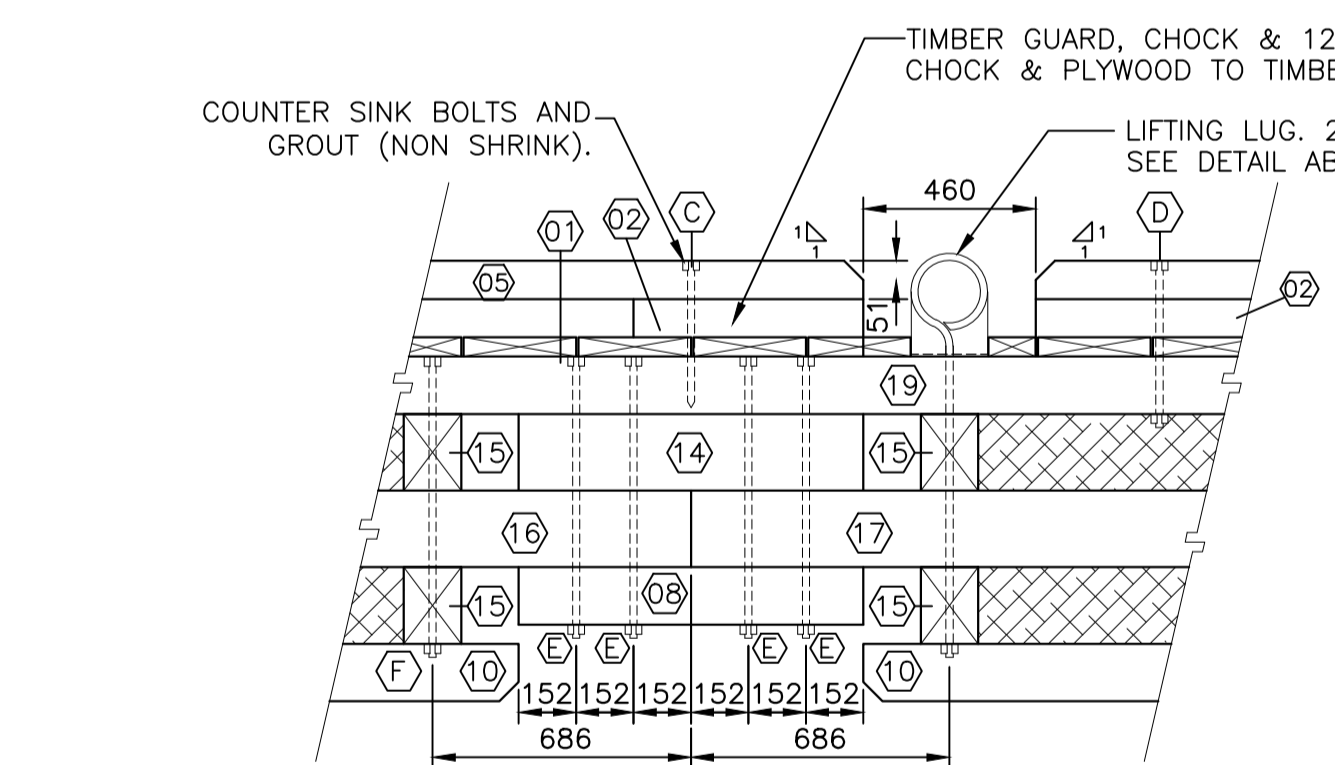
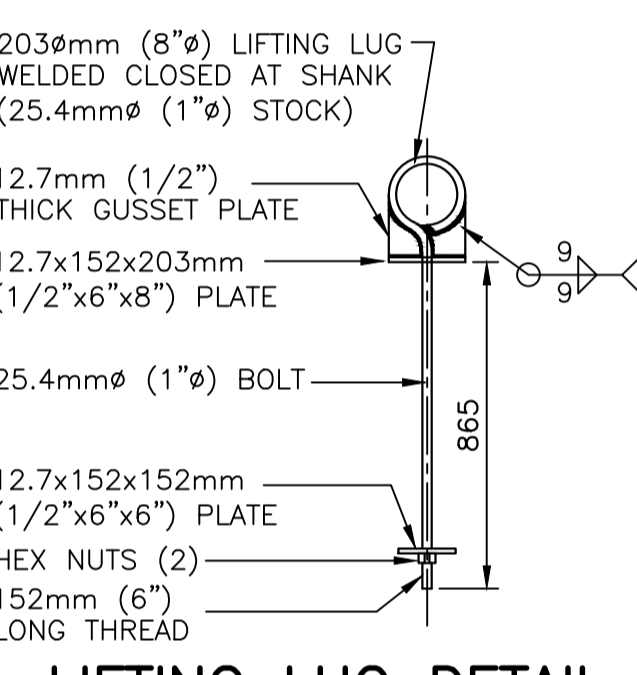
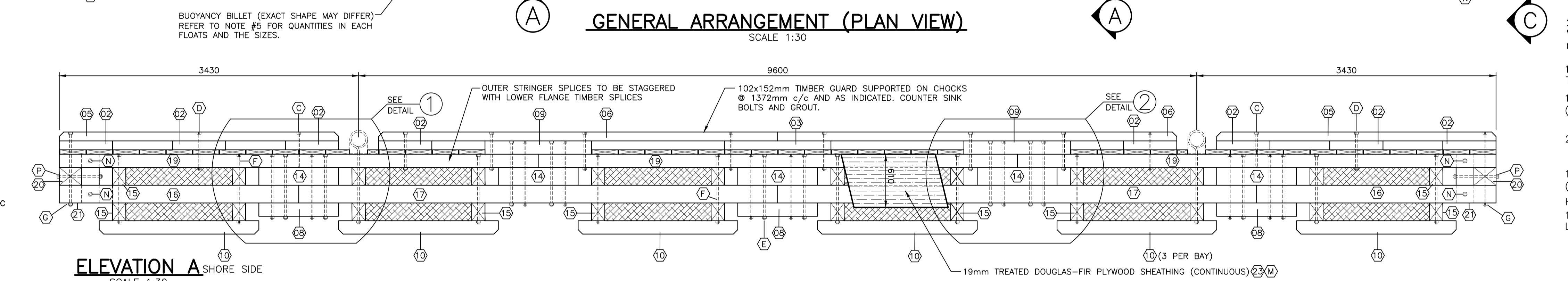
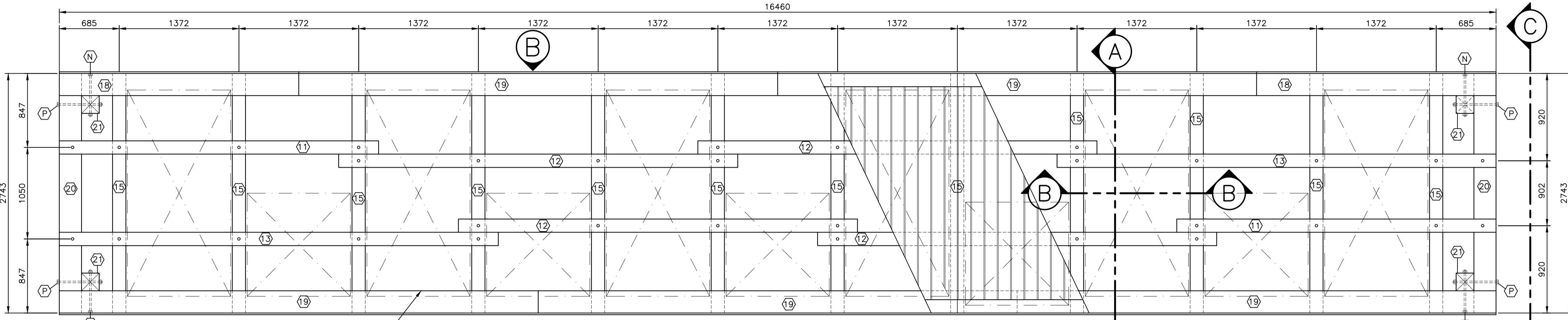
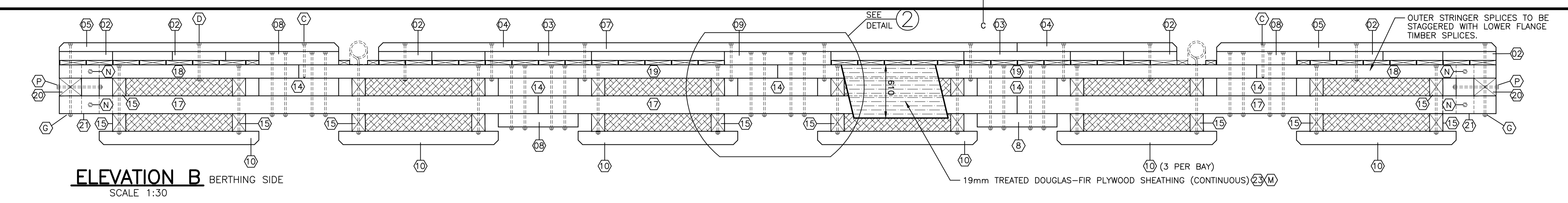
**CONSTRUCTION & INSTALLATION OF NEW FLOATING WHARVES BALLANTYNE'S COVE ANTIGONISH Co., NS**

**NEW GALVANIZED STEEL STRONG ARM CONNECTION DETAILS**

designed	S.C.H. STAFF	conçu
date	JULY 12, 2021	
drawn	S.C.H. STAFF	dessiné
date	JULY 15, 2021	
approved		approuvé
date		
Tender	S.M.	Submission
PWGSC Project Manager	Administrateur de projets TPSOC	
project number		no. du projet
	<b>C2-00363</b>	
drawing no.		no. du dessin
	<b>4 OF 6</b>	



- NOTES:**
- ALL TIMBER IS PRESSURE TREATED TO CSA-080-M1983, TABLE 1, WATER BOURNE PRESERVATIVES-C.C.A.
  - ALL HARDWARE ITEMS INCLUDING MACHINE BOLTS, DRIFT BOLTS, NUTS, WASHERS, SPIKES, LIFTING LUGS, ETC. ARE TO BE FABRICATED FROM MEDIUM OR MILD STEEL CONFORMING TO ASTM-A307-90.
  - ALL HARDWARE SUPPLIED BY CONTRACTOR. ITEMS ARE TO BE HOT DIP GALVANIZED WITH A MINIMUM COATING OF 610g/m CONFORMING TO CSA-G164 LATEST EDITION.
  - BUOYANCY BILLETS: TO BE SUPPLIED BY THE CONTRACTOR. TO BE APPROVED BY DEPARTMENT REPRESENTATIVE.
  - BUOYANCY BILLETS QUANTITIES AND SIZES FOR EACH FLOAT:
    - #1 6-600x1200x2400 (2'x4'x8')
    - #2 6-600x1200x2400 (2'x4'x8')
    - #3 6-600x1200x2400 (2'x4'x8')
    - #4 6-600x1200x2400 (2'x4'x8')
    - #5 6-600x1200x2400 (2'x4'x8')
    - #6 6-600x1200x2400 (2'x4'x8')
    - #7 6-600x1200x2400 (2'x4'x8')
    - #8 6-600x1200x2400 (2'x4'x8')
    - #9 6-600x1200x2400 (2'x4'x8')
    - #10 6-600x1200x2400 (2'x4'x8')
    - #11 6-600x1200x2400 (2'x4'x8')
    - #12 6-600x1200x2400 (2'x4'x8')
    - #13 6-600x1200x2400 (2'x4'x8')
    - #14 6-600x1200x2400 (2'x4'x8')
    - #15 6-600x1200x2400 (2'x4'x8')
    - #16 6-600x1200x2400 (2'x4'x8')
    - #17 6-600x1200x2400 (2'x4'x8')
    - #18 6-600x1200x2400 (2'x4'x8')
    - #19 6-600x1200x2400 (2'x4'x8')
    - #20 6-600x1200x2400 (2'x4'x8')
    - #21 6-600x1200x2400 (2'x4'x8')
    - #22 6-600x1200x2400 (2'x4'x8')
    - #23 6-600x1200x2400 (2'x4'x8')
  - IF FLOATING WHARVES ARE BOOMED INTO HARBOUR BASIN. A SPREADER BAR (MIN. 27 FEET LONG) IS REQUIRED. ANY DAMAGE AS THE RESULT OF NO SPREADER USED WILL BE PAID BY THE OPERATOR.
  - PLASTICWOOD DECKING IS TO BE PRE-DRILLED INCLUDING A COUNTERSUNK HEAD PRIOR TO FASTENING TO BOARD. SEE SPECIFICATIONS FOR MORE DETAILS ON THIS RECYCLED PRODUCT.



**BILL OF MATERIALS (QUANTITY FOR ONE (1) FLOATING WHARF)**

ITEM No.	HARDWARE DESCRIPTION	QUANTITY	ITEM No.	TREATED TIMBER DESCRIPTION	QUANTITY
A	12x250mm (1/2"x10") DRIFT BOLT	34	01	50x140x2740mm (2"x6"x9'-0") PLASTICWOOD (SEE SPECS.)	120
B	19x400mm (3/4"x16") M.B. c/w 100mm (4") THREAD	36	02	102x152x610mm (4"x6"x2'-0") CHOCKING	14
C	19x400mm (3/4"x16") LAG SCREW	4	03	102x152x1220mm (4"x6"x4'-0") CHOCKING	3
D	19x450mm (3/4"x18") M.B. c/w 100mm (4") THREAD	20	04	102x152x1830mm (4"x6"x6'-0") CHAMFERED TIMBERGUARD	2
E	19x750mm (3/4"x30") M.B. c/w 100mm (4") THREAD	40	05	102x152x3200mm (4"x6"x10'-6") CHAMFERED TIMBERGUARD	4
F	19x800mm (3/4"x32") M.B. c/w 150mm (4") THREAD	20	06	102x152x4572mm (4"x6"x15'-0") CHAMFERED TIMBERGUARD	2
G	19x850mm (3/4"x34") M.B. c/w 150mm (4") THREAD	4	07	102x152x5986mm (4"x6"x18'-0") CHAMFERED TIMBERGUARD	1
H	LIFTING LUG c/w HEX NUT & WASHERS (SEE DETAIL)	4	08	152x152x914mm (6"x6"x3'-0") CHOCK BLOCK	7
J	19mm (3/4") HEX NUT-TAPPED OVERSIZE TDS	132	09	152x152x1220mm (6"x6"x4'-0") CHOCK/SPLICE BLOCK	3
K	6mmx75mm (3/8"x3") WASHER c/w 22mm 7/8" HOLE	268	10	152x152x1830mm (6"x6"x6'-0") SKID (CHAMFER BOTH ENDS)	18
L	101.6mm (4") STRUCTURAL SCREW (SEE SPECS.)	690	11	152x152x3658mm (6"x6"x12'-0") STRINGER	2
M	76.2mm (3") STAINLESS STEEL SCREW (OVERSIZE HEAD)	250	12	152x152x4572mm (6"x6"x15'-0") STRINGER	4
N	19x500mm (3/4"x20") M.B. c/w 100mm (4") THREAD	8	13	152x152x5030mm (6"x6"x16'-6") STRINGER	2
P	19x600mm (3/4"x24") M.B. c/w 100mm (4") THREAD	4	14	152x203x914mm (6"x8"x3'-0") SPLICE BLOCK	10
			15	152x203x2743mm (6"x8"x9'-0") CROSS TIE	24
			16	152x229x2743mm (6"x9"x9'-0") FLANGE	2
			17	152x229x5486mm (6"x9"x18'-0") FLANGE	5
			18	152x254x2743mm (6"x10"x9'-0") OUTER STRINGER	2
			19	152x254x5486mm (6"x10"x18'-0") OUTER STRINGER	5
			20	203x305x2743mm (8"x12"x9'-0") END CROSS TIE	2
			21	203x203x560mm (8"x8"x1'-10") BINDER POST	4
			22	102x203x610mm (4"x8"x2'-0") SPACER BLOCK	4
			23	19x1219x2438mm (3/4"x4'-0"x8'-0") DOUGLAS-FIR TREATED PLYWOOD	7

C01	ISSUED FOR TENDER	AUG 13 2021
revisions		date
project		project

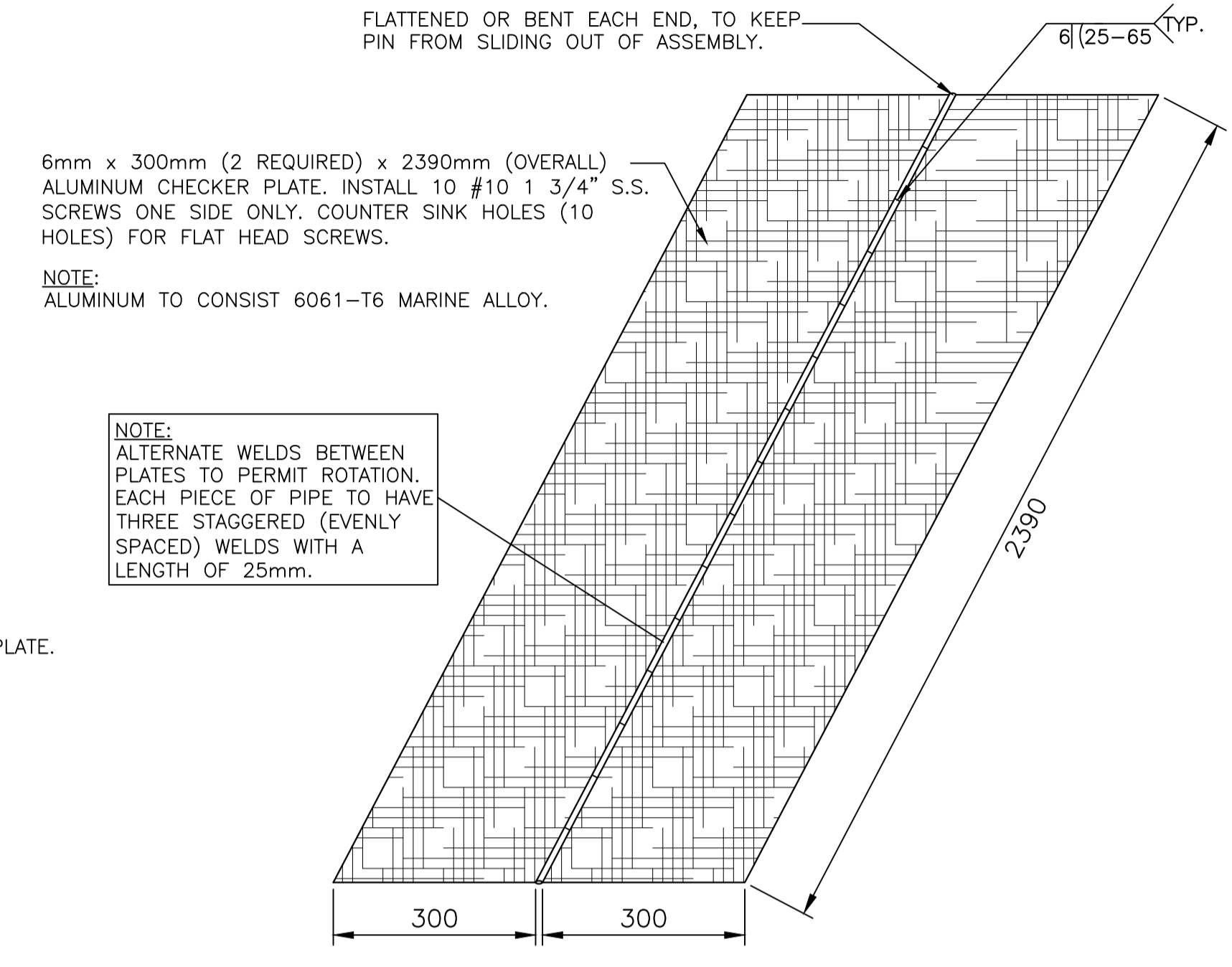
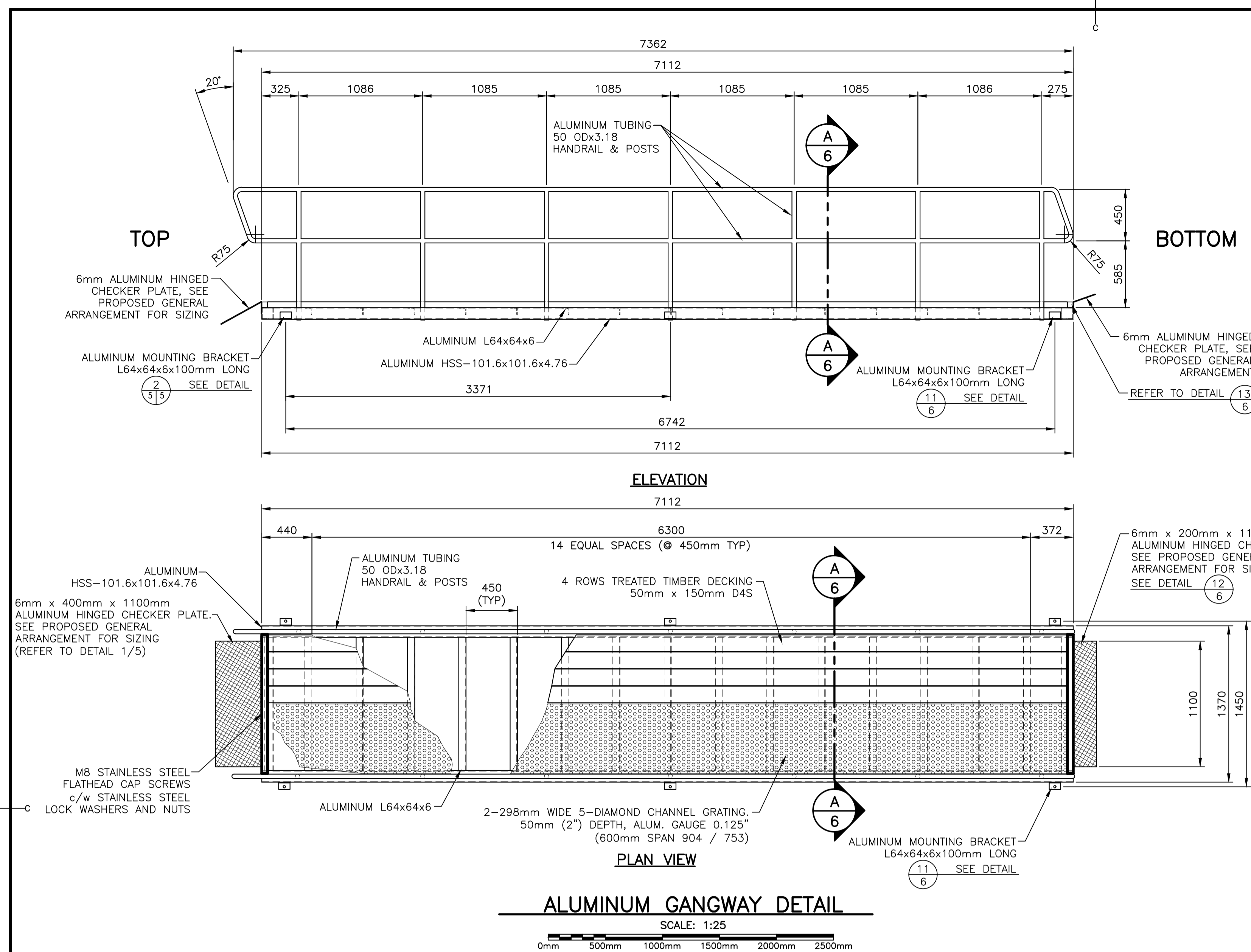
**CONSTRUCTION & INSTALLATION OF NEW FLOATING WHARVES BALLANTYNE'S COVE ANTIGONISH Co., NS**

**NEW FLOAT ASSEMBLY GENERAL ARRANGEMENT SECTION AND DETAILS**

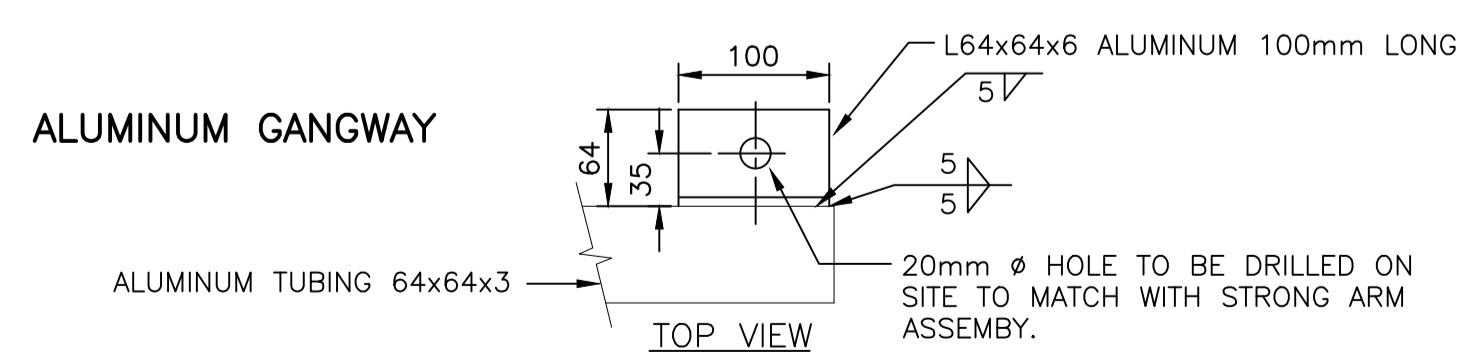
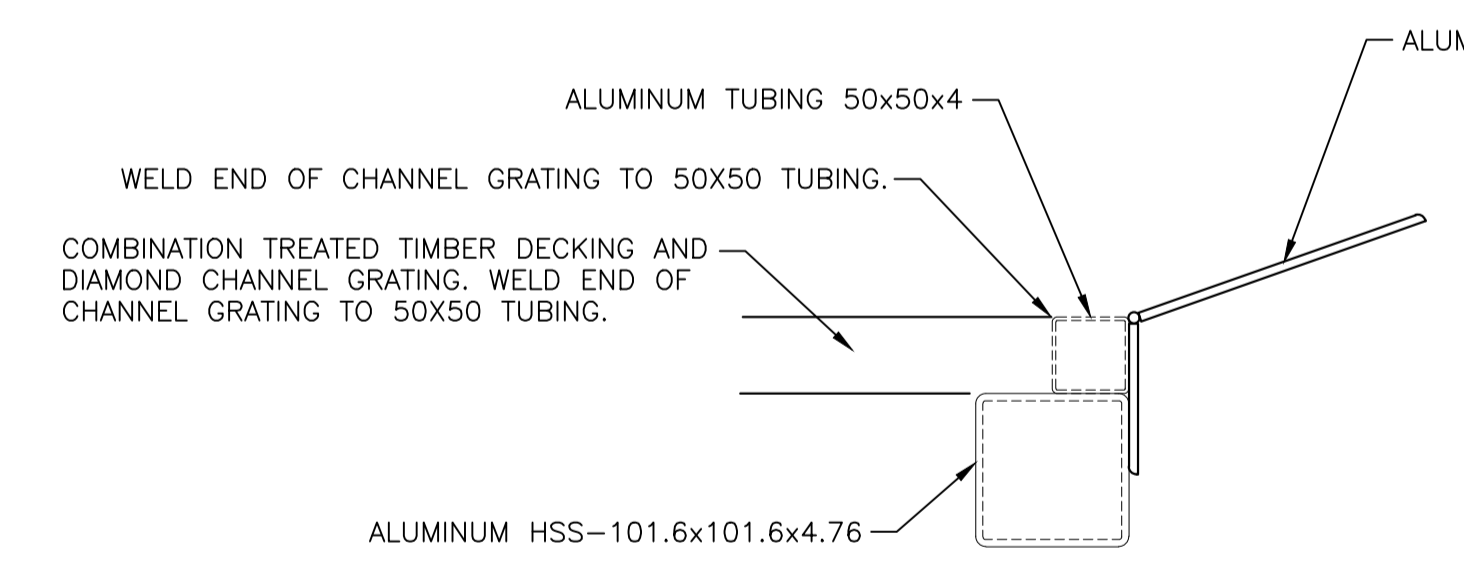
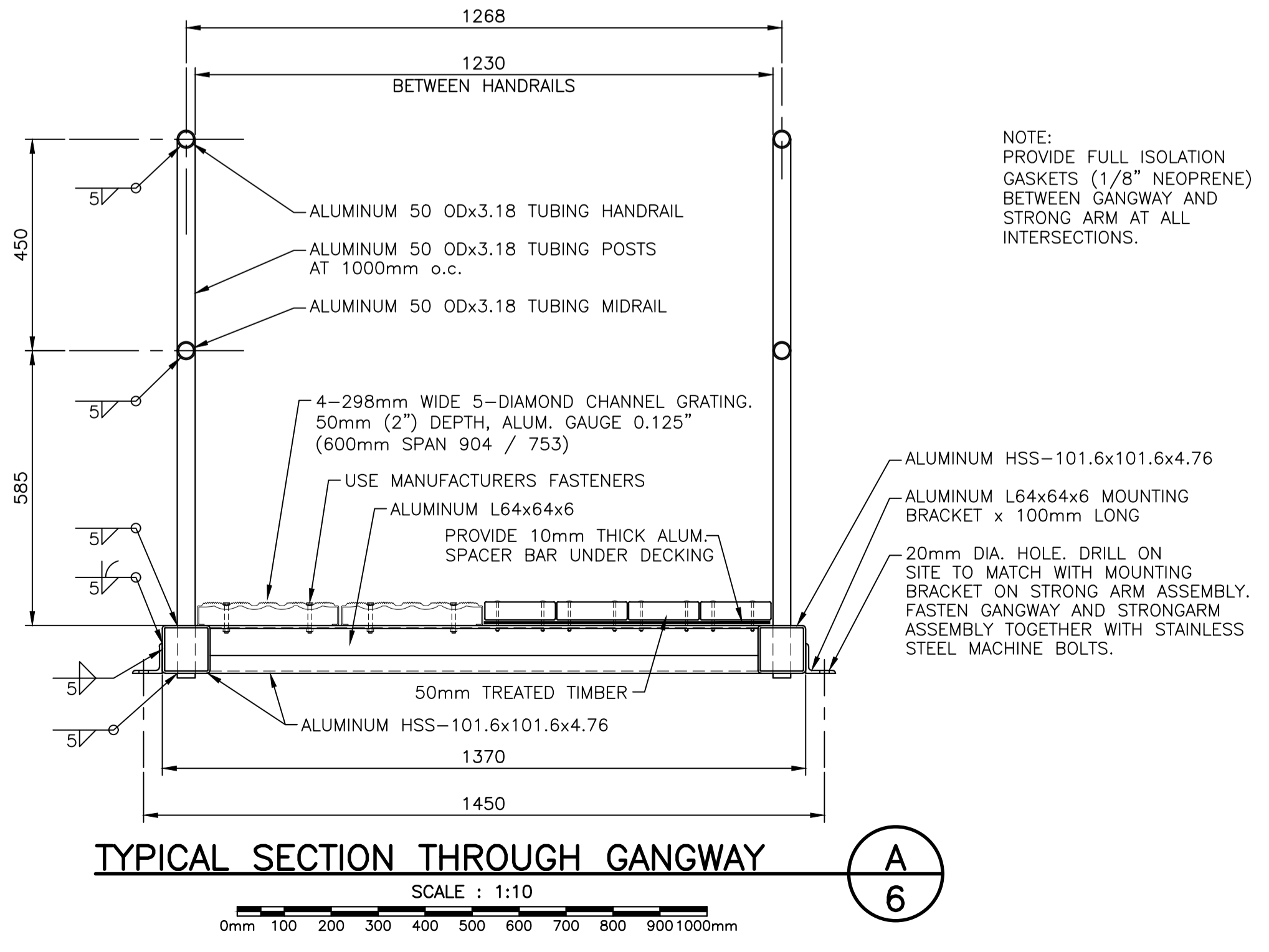
designed	S.C.H. STAFF	conçu
date	JULY 13, 2021	
drawn	S.C.H. STAFF	dessiné
date	JULY 15, 2021	
approved		approuvé
date		
Tender	S.M.	Submission
PWGC Project Manager	Administrateur de projets TPSC	
project number		no. du projet

**C2-00363**

drawing no. 5 OF 6 no. du dessin



**ALUMINUM CHECKER PLATE ASSEMBLY DETAIL** (12/6)  
N.T.S. 5 REQ'D



CO1	ISSUED FOR TENDER	AUG 13 2021
revisions		date
project		project
<b>CONSTRUCTION AND INSTALLATION OF NEW FLOATING WHARVES BALLANTYNE'S COVE ANTIGONISH Co., NS</b>		
drawing		dessin
<b>NEW ALUMINIUM GANGWAY AND DETAILS</b>		
designed	S.C.H. STAFF	conçu
date	JULY 12, 2021	
drawn	S.C.H. STAFF	dessiné
date	JULY 15, 2021	
approved		approuvé
date		
Tender	S.M.	Submission
project number	PWGSC Project Manager / Administrateur de projets TPSOC	no. du projet
<b>C2-00363</b>		
drawing no.		no. du dessin
<b>6 OF 6</b>		