

DO NOT SCALE DRAWINGS

1
2
3
4
5
6
7
8
9
10
11
12
13
14
15
16
17
18
19
20
21
22
23
24
25
26
27
28
29
30
31
32
33
34
35
36
37
38
39
40
41
42
43
44
45
46
47
48
49
50
51
52
53
54
55
56
57
58
59
60
61
62
63
64
65
66
67
68
69
70
71
72
73
74
75
76
77
78
79
80
81
82
83
84
85
86
87
88
89
90
91
92
93
94
95
96
97
98
99
100

FISHERIES AND OCEANS
SMALL CRAFT HARBOURS

401 BURRARD STREET, SUITE 200
VANCOUVER, BC

Project File/Draw. No. **191-10093-10**
TOFNO, B.C.

TORNO - 4th STREET
ELECTRICAL UPGRADE

Approved By/Signature: [Signature]
Designed By/Concept per: [Signature]
D.L. [Signature]
P.E.P. 120
P.E.S. Project Manager/Administrator or Project 1950C
D.L. [Signature]
P.E.P. 120
P.E.S. Project Manager/Administrator or Project 1950C
D.L. [Signature]
P.E.P. 120
P.E.S. Project Manager/Administrator or Project 1950C
D.L. [Signature]
P.E.P. 120
P.E.S. Project Manager/Administrator or Project 1950C

Sheet/Total: **E001**
of **0**

DRAWING LIST

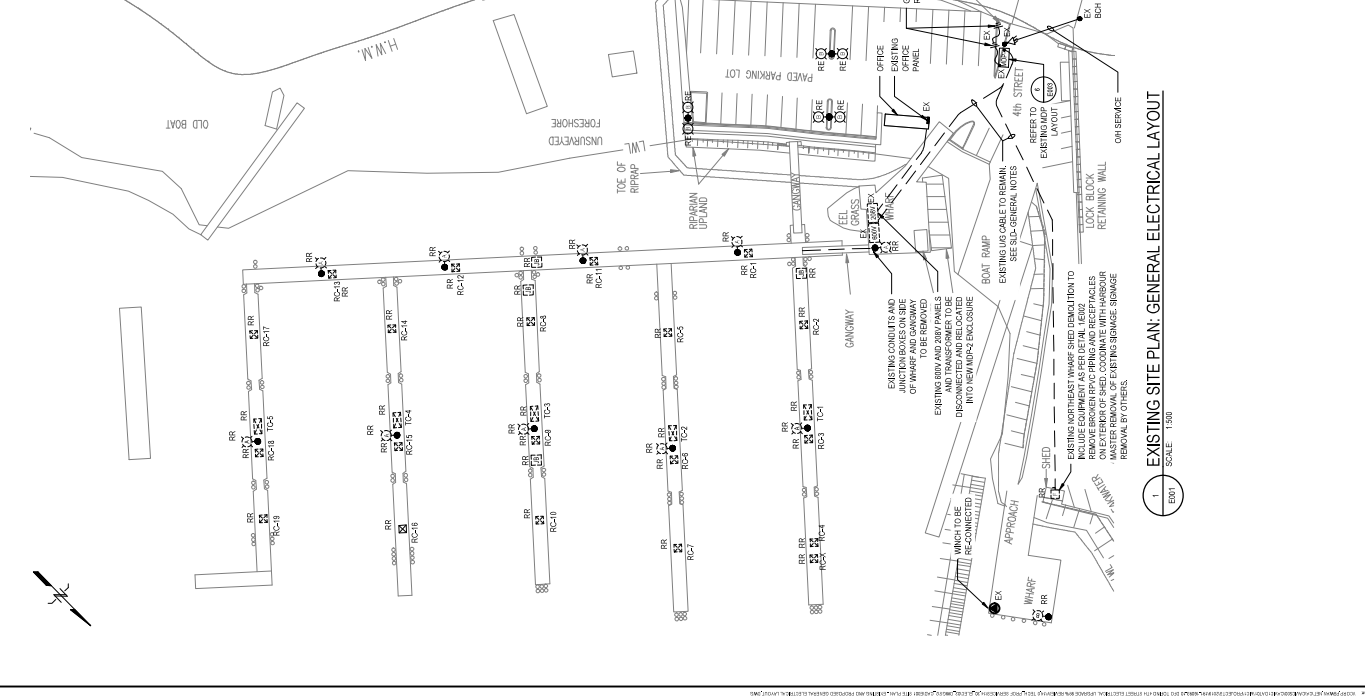
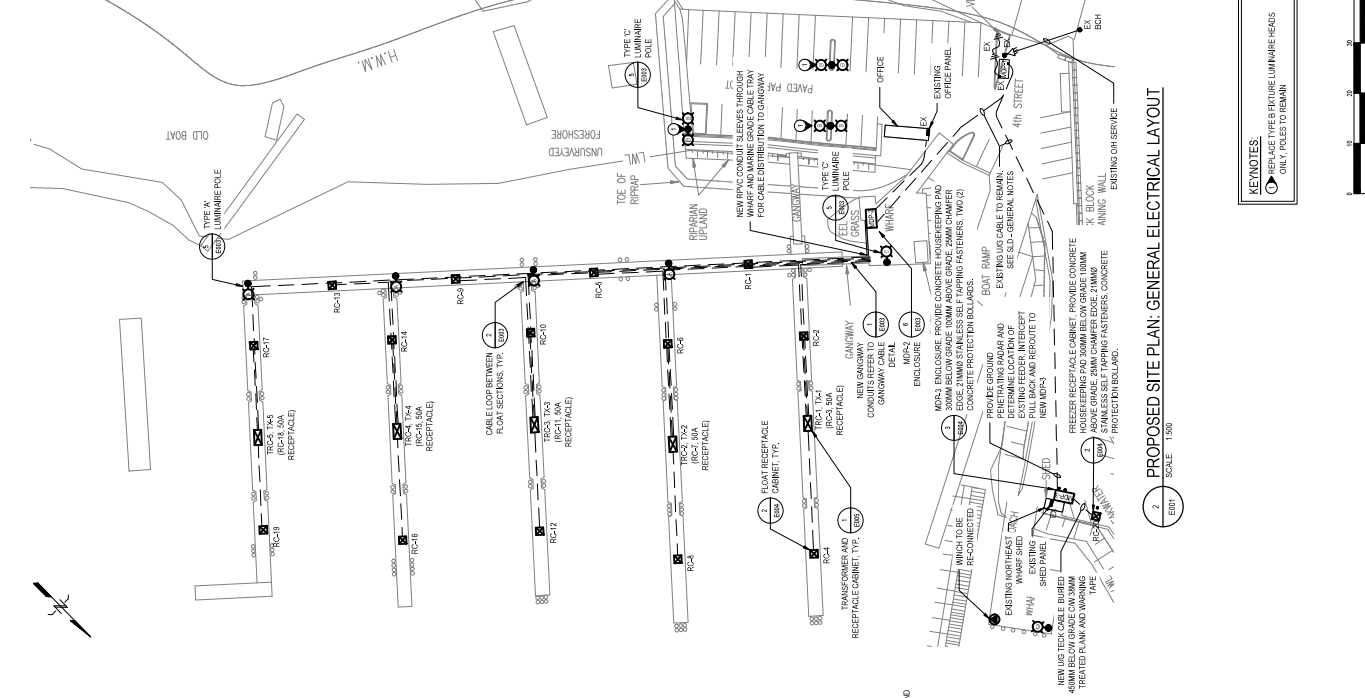
DRAWING NUMBER	DRAWING TITLE
E001	SITE PLAN - EXISTING AND PROPOSED GENERAL ELECTRICAL LAYOUT
E002	SINGLE LINE DIAGRAM - EXISTING AND NEW
E003	ELECTRICAL DETAILS
E004	RECEPTACLE CABINET (RC) LAYOUT AND TYPICAL DETAILS
E005	TRANSFORMER RECEPTACLE CABINET (TR) TYPICAL
E006	ELECTRICAL SYMBOLS AND CONDUIT SCHEDULES

ABBREVIATIONS

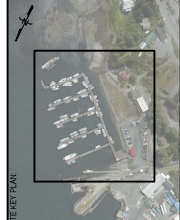
AHJ	AUTHORITY HAVING JURISDICTION
XXAF	CB FRAME RATING (AMPS)
XXAT	CB TRIP SETTING (AMPS)
BCH	B.C. HYDRO
CB	CIRCUIT BREAKER
CT	CURRENT TRANSFORMER
CCT	CIRCUIT
CEC	CANADIAN ELECTRICAL CODE
DFO	DEPARTMENT OF FISHERIES AND OCEANS
MUP	MAIN DISTRIBUTION PANEL
IT	IN CONTRACT
IP	IN PLACE
PH	PHASE
RC	RECEPTACLE CABINET (LOW RCP AND RCP PANEL)
RCP	SMALL CRAFT HARBOUR
SCH	SERVICE ENTRANCE ENCLOSURE
SEE	SEE [RECEPTACLE CABINET (CW TRCP, TRF AND RCP)]
TRCP	TRANSFORMER RECEPTACLE CABINET (CW TRCP, TRF AND RCP)
TRCP	TRCP PANEL
WP	WEATHERPROOF OUTLET
2P	TWO POLE CB (1 PHASE USE)
3P	THREE POLE CB (3 PHASE USE)
EX	EXISTING TO REMAIN
RE	EXISTING TO BE REPLACED
RR	EXISTING TO BE REMOVED

ELECTRICAL SYMBOL SCHEDULE AND ANNOTATIONS

○	EXTERNAL LUMINAIRE WITH POLE ASSEMBLY (TYPE A SKIN)
●	POWER POLE
⚡	OVERHEAD UTILITY SERVICE MAST
⊖	EQUIPMENT CONNECTION
□	PANEL
□	MAN DISTRIBUTION PANEL
□	RECEPTACLE CABINET N/A
□	TRANSFORMER RECEPTACLE CABINET N/A WITH TRANSFORMER
□	TRANSFORMER
⤵	DOWNHAUL GUY WITH ANCHOR AND GUARD
⚡	CIRCUIT BREAKER
⚡	FUSED DISCONNECT SWITCH
⚡	UTILITY POWER METER
⚡	CONNECTION POINT (ROLL-ROD SITE PLAN)
⚡	CABINET RECEPTACLES
⚡	REFERENCE NOTE (1) (NOTES SEE NOTE 1)
⚡	PANEL IDENTIFICATION TAG
⚡	NEW EQUIPMENT
⚡	EXISTING EQUIPMENT TO REMAIN
---	EXISTING EQUIPMENT TO BE REMOVED



KEYNOTES:
○ REPLACE TYPE/FREQUENCY LUMINAIRE HEADS ONLY. POLES TO REMAIN



DO NOT SCALE DRAWINGS

1	DATE	
2	REVISION	
3	REVISION	
4	REVISION	
5	REVISION	
6	REVISION	
7	REVISION	
8	REVISION	
9	REVISION	
10	REVISION	

Project No./Title: 401 BARRARD STREET, SUITE 200 VANCOUVER, BC
Project File/Rev: 401.pdf

FISHERIES AND OCEANS
SMALL CRAFT HARBOURS

401 BARRARD STREET, SUITE 200
VANCOUVER, BC

Project File/Title: 401.pdf

TOFINO, B.C.

TOFINO - 4th STREET
ELECTRICAL UPGRADE

Approved By/Approver: [Signature]

Designed By/Designer: [Signature]

Checked By/Checker: [Signature]

P.P.T./C.O.

Project Manager/Supervisor: [Signature]

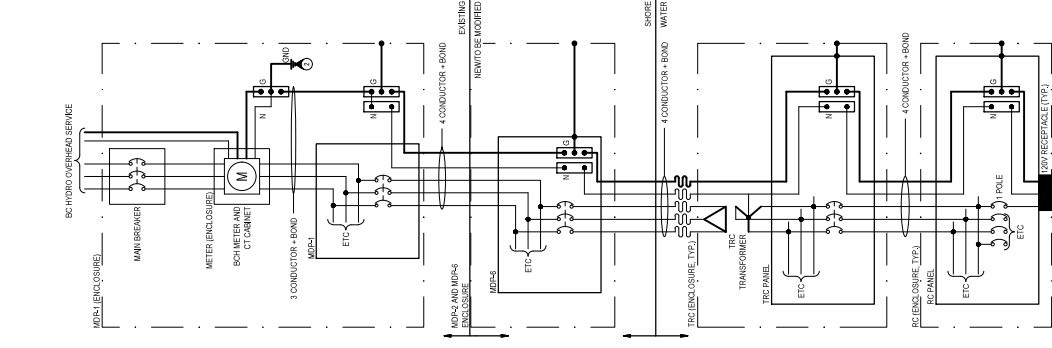
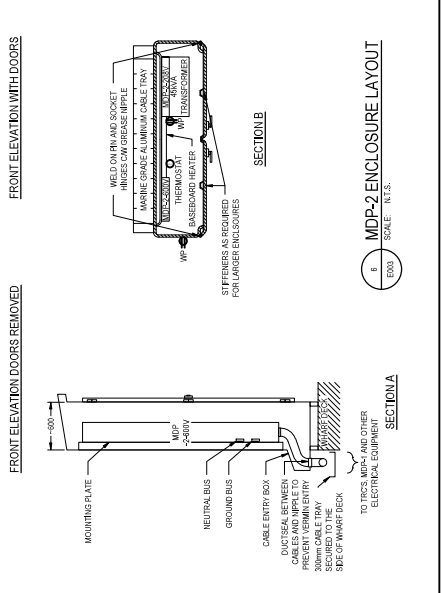
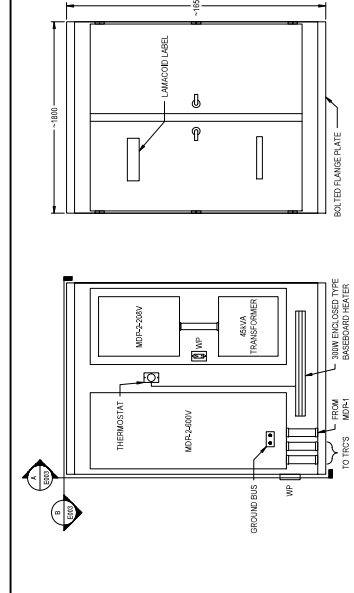
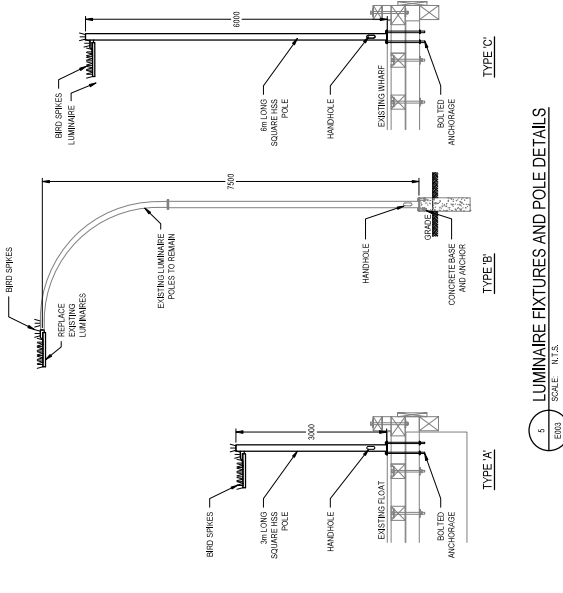
Client/Owner: [Signature]

DWG. NO.:

Drawing File/Title: as shown

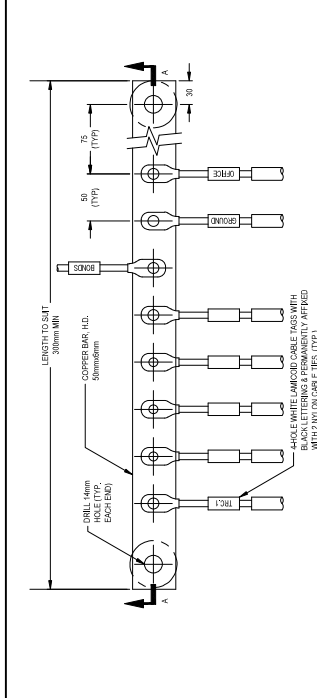
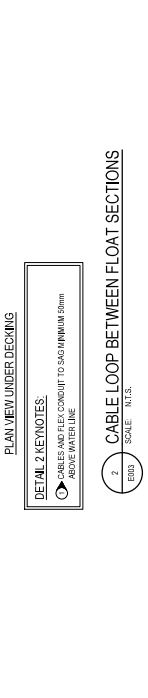
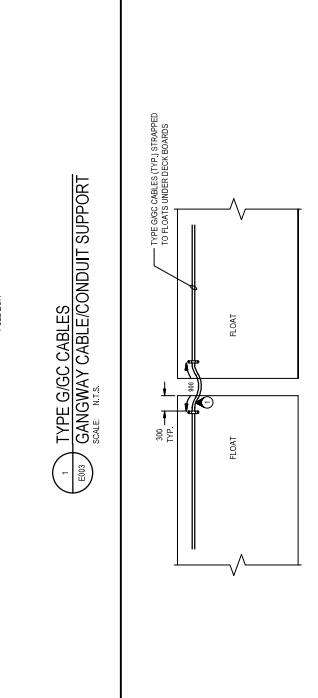
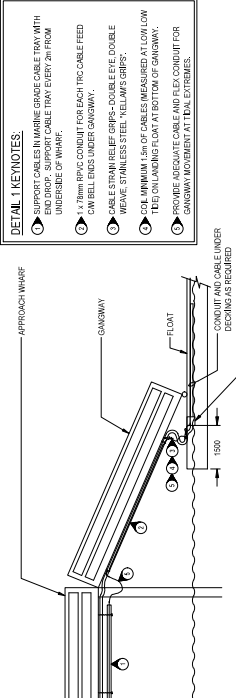
ELECTRICAL DETAILS

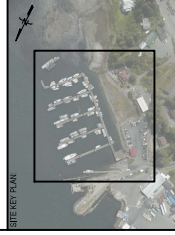
Project No./Title: 191-10093-10
Sheet/Total: E003
03 OF 06



DETAIL 1 KEYNOTES

- ALL GROUNDING AND BONDING TO BE COMPLETED AS PER THE REQUIREMENTS OF THE BC ELECTRICAL CODE (BCEC) AND THE CANADIAN ELECTRICAL CODE (CEC).
- CARRYING METALLIC PARTS OF ELECTRICAL EQUIPMENT TO BE GROUNDED TO EACH OTHER AND CONNECT TO GROUND BAR.
- GROUNDING AND BONDING TO BE TESTED AT EXISTING SHORES AND SUBMITTED FOR ACCEPTABLE RESULTS.
- REQUIRED. INSTALL NEW GROUND ELECTRODES AS REQUIRED FOR ACCEPTABLE RESULTS.





DO NOT SCALE DRAWINGS

1	DATE	10/10/2018
2	DESCRIPTION	TRANSFORMER AND RECEPTACLE CABINET (TRC) ON FLOAT - FRONT VIEW
3	DESIGNER	J.A. ANDERSON
4	CHECKED	J.A. ANDERSON
5	APPROVED	J.A. ANDERSON
6	PROJECT NO.	191-10093-10
7	PROJECT NAME	FISHERIES AND OCEANS SMALL CRAFT HARBOURS
8	PROJECT ADDRESS	401 BURRARD STREET, SUITE 200 VANCOUVER, BC TOFINO, B.C.

FISHERIES AND OCEANS
SMALL CRAFT HARBOURS

401 BURRARD STREET, SUITE 200
VANCOUVER, BC
TOFINO, B.C.

Project file/rev. 40, page 1

Approved By/Approver per _____

Designed By/Designer per _____

Checked By/Checker per _____

Project Manager/Administrator or Project Engineer P.E.P., P.E. _____

D.L.L. _____

Revision/Description of Change/Date/By _____

Client/Owner _____

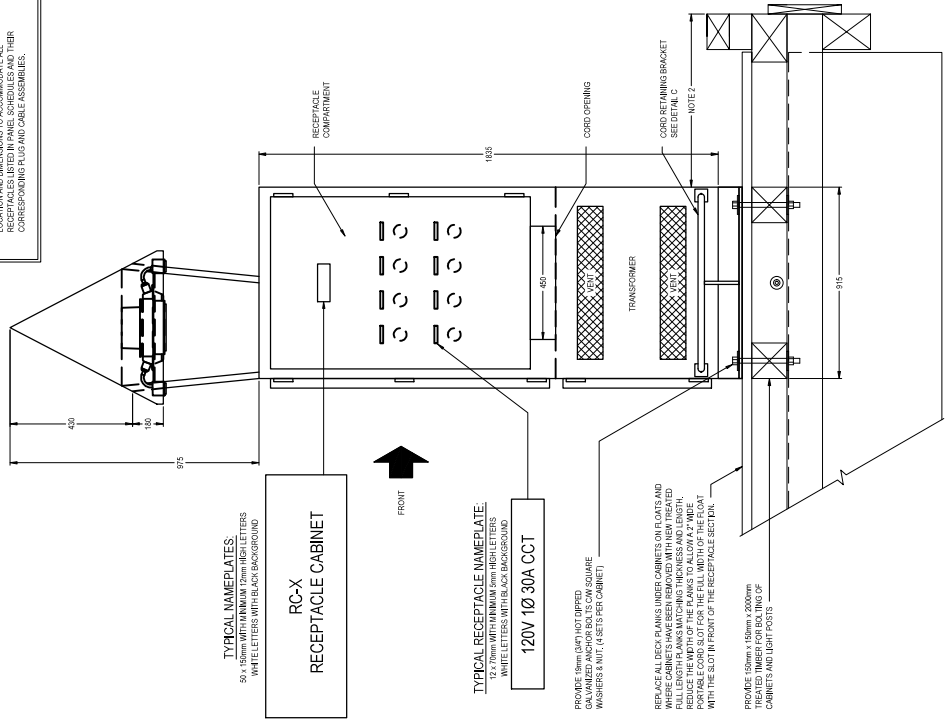
DWG. NO. _____

DWGING TITLE/Rev. or sheet _____

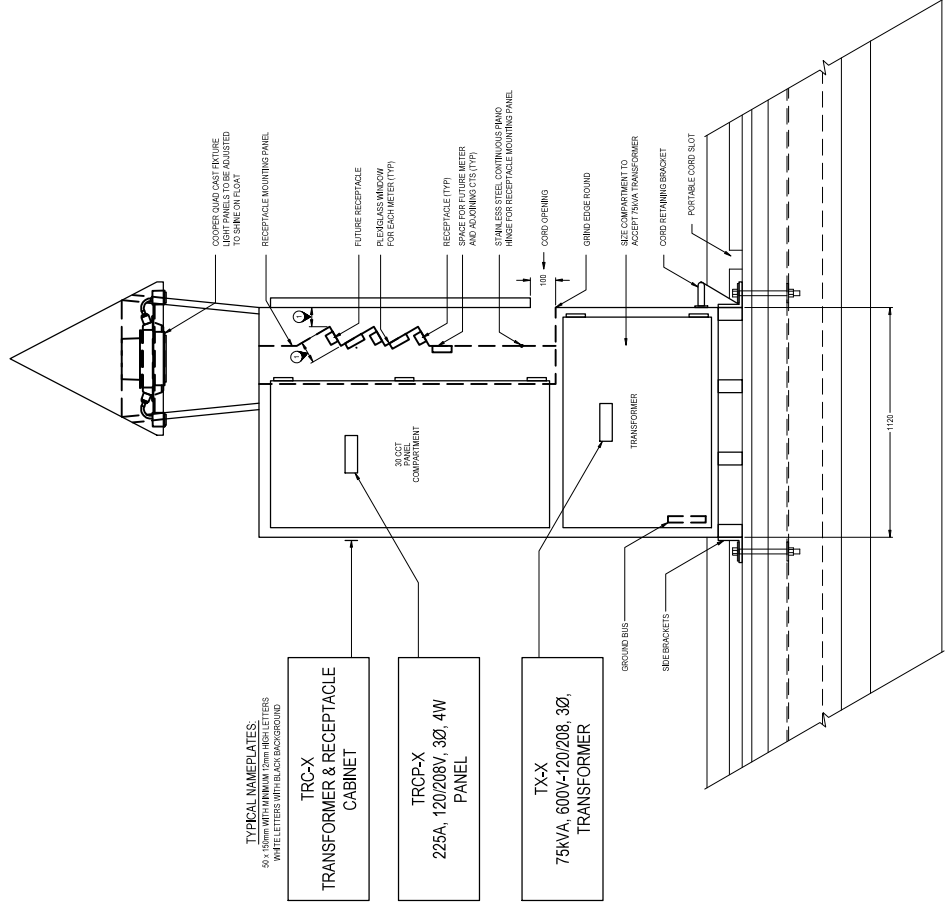
TRANSFORMER RECEPTACLE CABINET (TRC) DETAILS

Project No./Rev. No.	Sheet/Total	Scale
191-10093-10	E005	05 OF 06

- GENERAL NOTES:**
1. TIGHTEN ALL ANCHOR BOLTS TO 80 FOOT POUNDS.
 2. PROVIDE METALLIC WASHERS FOR ANCHOR BOLTS.
 3. EACH CABINET ON EACH FLOAT PRIOR TO INSTALLATION.
- KEYNOTES:**
- OPENING SPACING AND RECEPTACLE MOUNTING PLATE LOCATION AND DIMENSIONS TO ACCOMMODATE ALL RECEPTACLES LISTED IN PANEL SCHEDULES AND THEIR CORRESPONDING PLUG AND CABLE ASSEMBLIES.



2 **DETAIL - TRC CABINET - SIDE VIEW**
SCALE: 1/10



1 **DETAIL - TRANSFORMER AND RECEPTACLE CABINET (TRC) ON FLOAT - FRONT VIEW**
SCALE: 1/10

