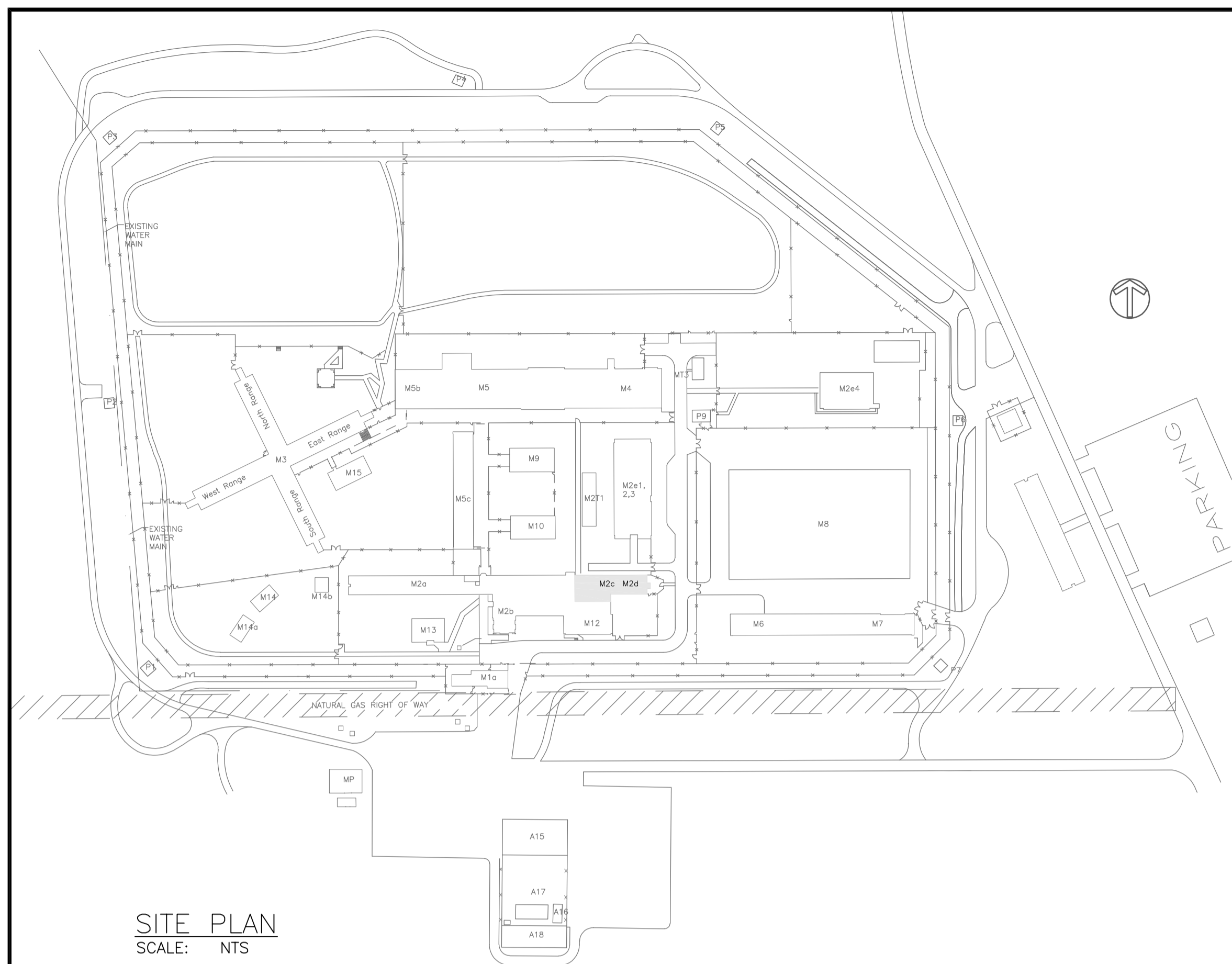


**GENERAL NOTES:**

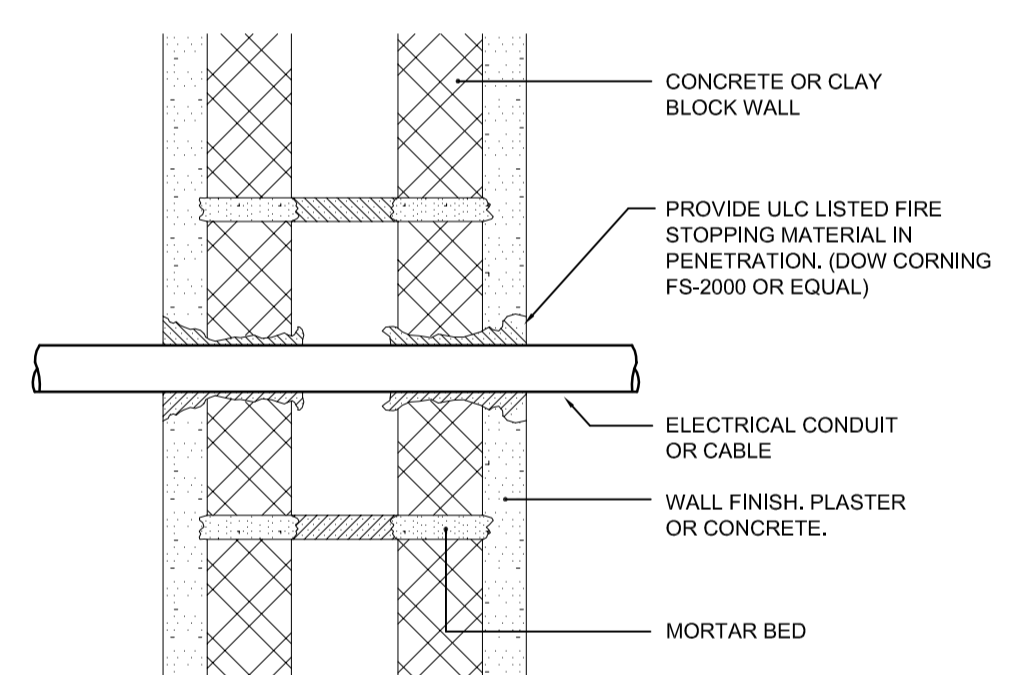
- CUT CONCRETE USING TECHNIQUES TO MINIMIZE AIRBORNE DUST. WET WITH SPRAY BOTTLE, VACUUM WHILE CUTTING OR USE OTHER ACCEPTABLE TECHNIQUE TO DEPARTMENTAL REPRESENTATIVE SATISFACTION. REMOVE DUST AS IT IS CREATED. VACUUM AT END OF EACH WORK DAY TO REMOVE DUST CREATED THROUGHOUT THE WORK DAY.
- PERFORM PATCHING OPERATIONS TO MINIMIZE SANDING AND THE CREATION OF AIRBORNE DUST. TROWEL IN PATCHING MATERIAL TO MINIMIZE SANDING. REMOVE AIRBORNE DUST AS IT IS CREATED BY VACUUM OR OTHER ACCEPTABLE TECHNIQUE.
- WHERE CEILINGS ARE DROPPED, CONCEAL WIRING ABOVE THEM. ACCESS TO DROPPED CEILINGS IS BY ACCESS PANEL OR BY DROPPING RECESSED LIGHT FIXTURES DOWN.
- WHERE WALLS ARE PENETRATED ABOVE DROPPED CEILINGS CLOSE UP OPENINGS. WHERE WALLS ARE FIRE RATED, USE FIRE STOPPING MATERIAL TO SEAL OPENINGS TO SUIT.
- SEALANT TO BE PICK-PROOF SECURITY SEALANT AS SPECIFIED IN SPECIFICATION 07 92 00.
- ALL RECEPTACLES TYPES TO BE USED ARE SPECIFIED IN ELECTRICAL SPECIFICATION.
- WHERE CONDUITS ARE RUN ON THE CEILING IN THE CORRIDORS BETWEEN CELLS, FIX THE CONDUITS TO THE UNDERSIDE OF EACH BEAM. PROVIDE UNISTRUT IN THE MIDDLE BETWEEN EVERY TWO BEAMS TO PROPERLY SUPPORT THE CONDUITS. ATTACH TO THE UNDERSLAB. MOUNT ALL JUNCTION BOXES ON THE BEAMS.
- WHERE CONDUITS ARE RUN ON THE WALLS IN THE CORRIDORS BETWEEN CELLS, FIX THE CONDUITS AT MAXIMUM 1200MM (4'-0") CENTERS. USE TWO HOLE STRAPS.
- CONDUIT RUN INSIDE CELLS SHALL BE FIXED ON 600MM (2'-0") CENTERS WITH TWO HOLE STRAPS. ALL NEW CONDUITS IN THE CELLS TO RUN PARALLEL TO EXISTING CONDUITS WITHOUT CROSSING/OVERLAPPING THEM.
- SEAL IN BEHIND ALL CONDUITS IN CELLS BY TROWELLING IN THE PICK-PROOF SECURITY SEALANT. FOLLOWING INSTALLATION PAINT INTERIOR.
- SEAL CONDUIT PENETRATIONS THROUGH WALLS INTO CELLS FROM CORRIDOR OUTSIDE CELLS. DRILL HOLES ONLY SLIGHTLY OVERSIZED. DO NOT KNOCK OUT LARGE OPENINGS. GET APPROVED BY DEPARTMENTAL REPRESENTATIVE. SEAL WITH PICK-PROOF SECURITY SEALANT.
- TORX HEAD TAMPER PROOF SCREWS WITH CENTRE PIN REJECT TO BE USED IN CELLS FOR CONDUIT FIXINGS AND BOX COVER PLATES ETC. AND REGULAR ROBERTSON HEAD ELSEWHERE.
- SEAL IN AROUND ALL NEW AND EXISTING RE-INSTALLED LIGHTING FIXTURES IN CELLS AND CORRIDORS WITH PICK-PROOF SECURITY SEALANT.
- CONDUITS IN INMATE ACCESSIBLE AREAS TO BE RIGID GALVANIZED STEEL. CONDUITS IN CONTROL POST AND OTHER AREAS NOT ACCESSIBLE BY INMATES TO BE EMT.
- CONTRACTOR TO CONFIRM NAMING CONVENTION FOR SWITCHING PANELS AND POWER PANELS CIRCUITS WITH DEPARTMENTAL REPRESENTATIVE AND INSTITUTION PRIOR LABELING.
- ALLOW FOR ARC FLASH AND SHOCK HAZARD WARNING LABELS TO BE PUT ON ALL NEW PANELS.
- PERFORM X-RAYS BEFORE ANY CUTTING, CORING AND PATCHING THE FLOOR SLABS AND WALLS TO AVOID ANY DAMAGE TO EXISTING INSTALLATIONS WITHIN THE SLAB AND WALLS.



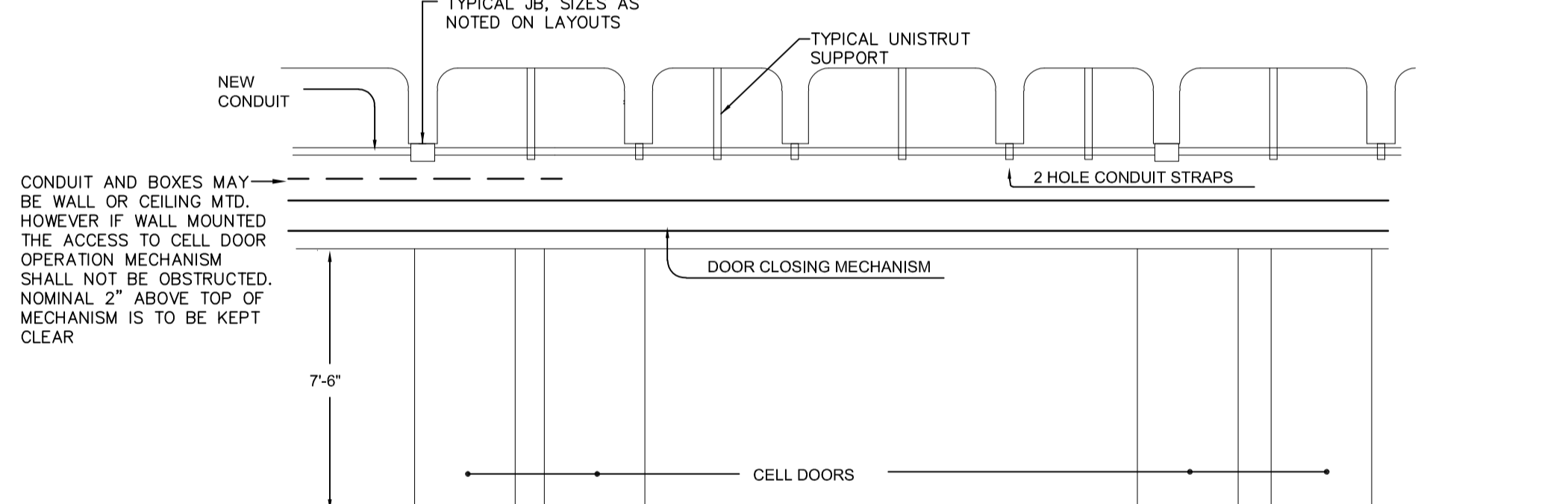
**SITE PLAN**  
SCALE: NTS

ELECTRICAL DRAWING LIST	
E100	COVER PAGE
E201	ELECTRICAL - FIRST FLOOR PLAN
E202	ELECTRICAL - SECOND FLOOR PLAN
E203	ELECTRICAL - ROOF PLAN
E204	ELECTRICAL - PANEL 'EH' SCHEDULE / SINGLE LINE DIAGRAM

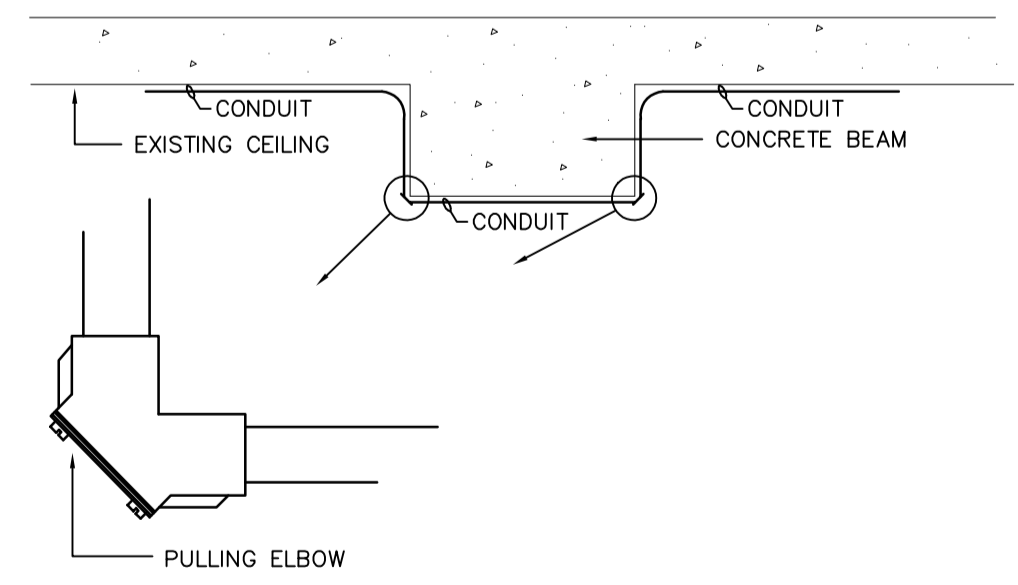
ELECTRICAL SYMBOL LEGEND	
SINGLE LINE	POWER
FEEDER/CONDUCTOR	DUPLEX RECEPTACLE
BUSBAR/CDP	FOUR PLEX RECEPTACLE
POWER CIRCUIT BREAKER (VACUUM OR SF6)	ABOVE COUNTER DUPLEX RECEPTACLE
DRAW OUT BREAKER	ABOVE COUNTER FOUR PLEX RECEPTACLE
BREAKER	5-20R RECEPTACLE (T-SLOT)
KEY INTERLOCK SWITCH	GROUND FAULT INTERRUPTER
GANG OPERATED LOAD BREAK SWITCH	DUPLEX RECEPTACLE
MOTORIZED GANG OPERATED LOAD BREAK SWITCH	GROUND FAULT INTERRUPTER
GANG OPERATED DISCONNECT SWITCH	FOUR PLEX RECEPTACLE
FUSE	EQUIPMENT CONNECTION
FUSE	JUNCTION BOX
RELAY	GROUND BUS
CONTACT NO	PANEL
CONTACT NC	CONDUIT RUN UP
CABLE POTHEAD	CONDUIT RUN DOWN
LIGHTNING ARRESTER	DISCONNECT SWITCH
GROUND	
METERING TRANSFORMER	
SERVICE PROVIDER METER	
DIGITAL METERING UNIT	
OVERCURRENT GROUND RELAY	
OVERCURRENT PHASE RELAY	
TRANSFORMER (DRY TYPE)	
DELTA-WYE TRANSFORMER	
DELTA-ZIGZAG HARMONIC MITIGATION TRANSFORMER	
GENERATOR	
TRANSFER SWITCH	
PANEL	
LOW VOLTAGE PANEL	
LSIG LONG, SHORT, INSTANTANEOUS, & GROUND TRIP UNIT	
FT FEED THROUGH	
TD TIME DELAY	
LV LOW VOLTAGE LIGHTING RELAY CABINET	
PS PHASE SHIFT	
	LIGHTING
	EMERGENCY/NIGHT LIGHT LUMINAIRE
	1'x4' SURFACE FLUORESCENT LUMINAIRE
	1'x4' RECESSED FLUORESCENT LUMINAIRE
	1'x4' SUSPENDED FLUORESCENT LUMINAIRE
	1'x1' SURFACE FLUORESCENT LUMINAIRE
	1'x1' RECESSED FLUORESCENT LUMINAIRE
	2'x2' SURFACE FLUORESCENT LUMINAIRE
	2'x2' RECESSED FLUORESCENT LUMINAIRE
	2'x4' SURFACE FLUORESCENT LUMINAIRE
	2'x4' RECESSED FLUORESCENT LUMINAIRE
	FLUORESCENT STRIP LIGHT
	SURFACE MOUNTED DOWN LIGHT
	RECESSED DOWN LIGHT
	WALL MOUNTED DOWN LIGHT
	SINGLE POLE TOGGLE SWITCH
	LOW VOLTAGE SWITCH
	MULTI POLE SWITCH
	PHOTO ELECTRIC CELL
	ABBREVIATIONS
	AC ABOVE COUNTER
	D INDICATES CIRCUIT TO BE DEDICATED
	E EXISTING DEVICE
	N NEW DEVICE
	NL NIGHT LIGHT
	R EXISTING DEVICE TO BE REMOVED
	REL RELOCATE EXISTING DEVICE TO NEW LOCATION AS SHOWN
	RM EXISTING DEVICE TO REMAIN
	RP EXISTING DEVICE TO BE REPLACED WITH NEW
	RR REMOVE EXISTING DEVICE AND RE-INSTALL IN SAME LOCATION. REWIRE TO SUIT.
	WP WEATHER PROOF
	S SURFACE MOUNTED
	WG WIRE GUARD
	GFI GROUND FAULT INTERRUPTER



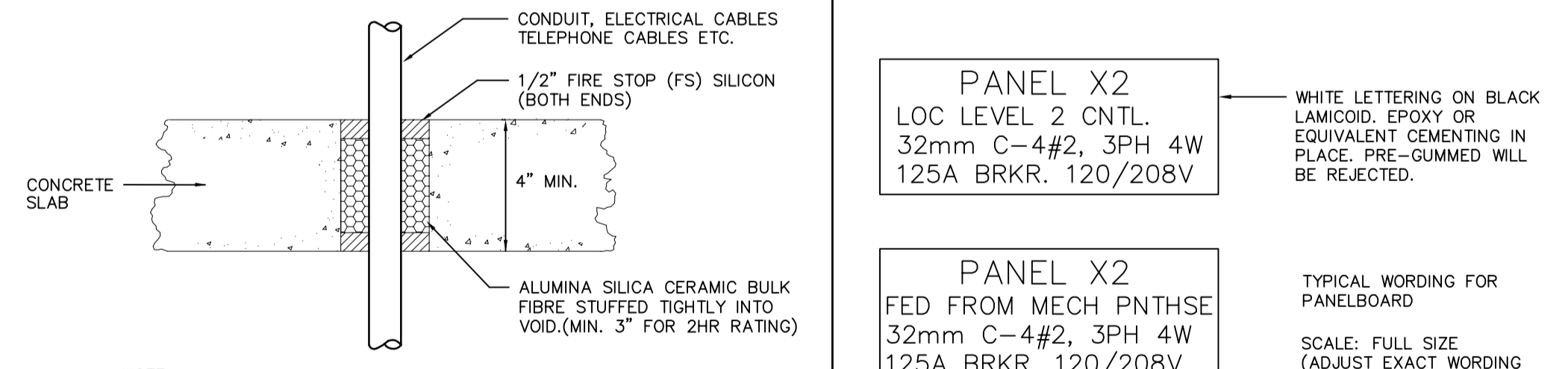
**DETAIL #1: TYPICAL FIRE STOPPING DETAIL FOR HORIZONTAL PENETRATION THROUGH WALLS**  
N.T.S.



**DETAIL #2: TYPICAL ELEVATION IN CORRIDOR-CELL BLOCKS**  
N.T.S.



**DETAIL #3: TYPICAL WIRING DETAIL (CONDUIT RUN AROUND COLUMNS.)**  
N.T.S.

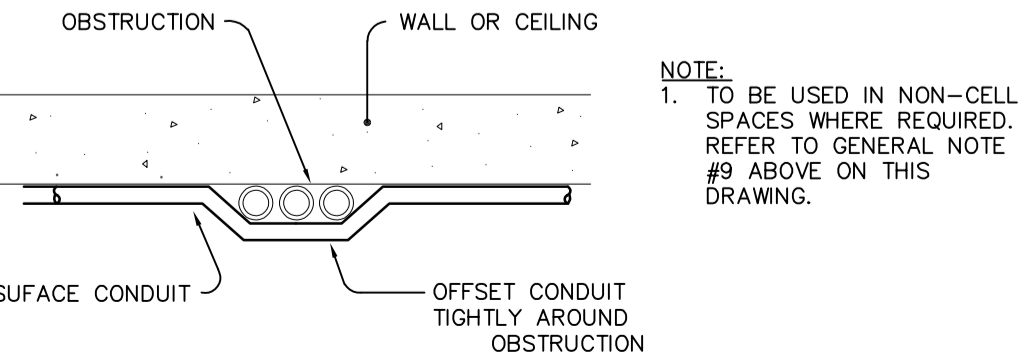


**DETAIL #4: TYPICAL FIRE STOPPING DETAIL FOR VERTICAL RISERS THROUGH FLOORS**  
N.T.S.

PANEL X2  
LOC LEVEL 2 CNTL.  
32mm C-4#2, 3PH 4W  
125A BRKR. 120/208V

PANEL X2  
FED FROM MECH PNTNSE  
32mm C-4#2, 3PH 4W  
125A BRKR. 120/208V

**DETAIL #5: TYPICAL LABELING DETAILS PANELBOARDS & DISTRIBUTION PANEL BREAKERS**



**DETAIL #6: TYPICAL SURFACE CONDUIT INSTALLATION DETAIL.**  
N.T.S.

Revision	Description/Description	Date
3	RE-ISSUED FOR TENDER ADDENDUM E01	2021.10.28
2	RE-ISSUED FOR TENDER	2020.12.14
1	ISSUED FOR TENDER	2020.11.18

**CORRECTIONAL SERVICE CANADA**

Project title/Titre du projet  
**MATSQUI INSTITUTION**  
ABBOTSFORD, BC  
33344 KING ROAD  
**MATSQUI LIVING UNIT 5**  
**UNDERSLAB SUPPLY VENTING**

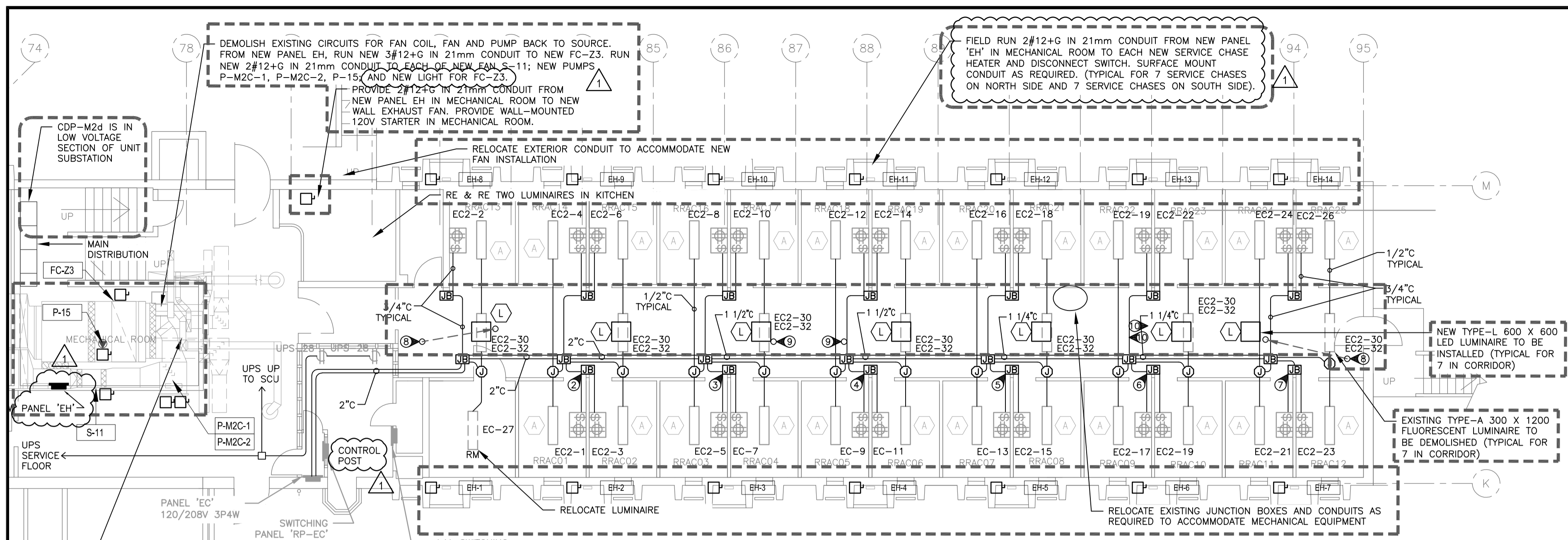
Consultant Signature Only  
Designed by/Concept par Norman Wong  
Drawn by/Dessiné par Thang Cao  
PWGSC Project Manager/Administrateur de Projets TPSGC Ken Wendt  
Regional Manager, Architectural and Engineering Services Gestionnaire régionale, Services d'architectural et de génie, TPSGC Freeilip Paul  
Drawing title/Titre du dessin

**COVER PAGE**

Project No./No. du projet <b>R.11315.001</b>	Sheet/Fauille <b>E100</b> OF	Revision no./La Révision no. <b>3</b>
---	------------------------------------	--







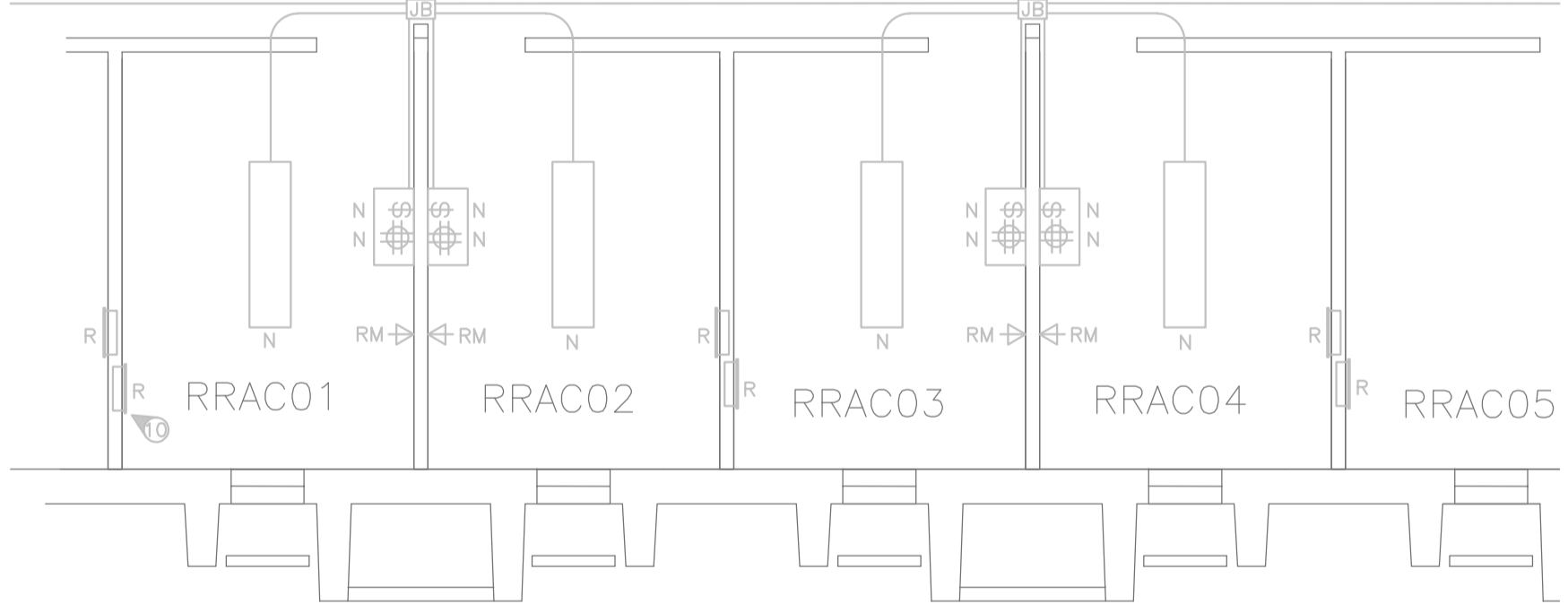
M2c MAIN LEVEL FLOOR PLAN (RRAC) - POWER/LIGHTING LAYOUT  
SCALE: 1:100

PANEL 'EC' EXISTING

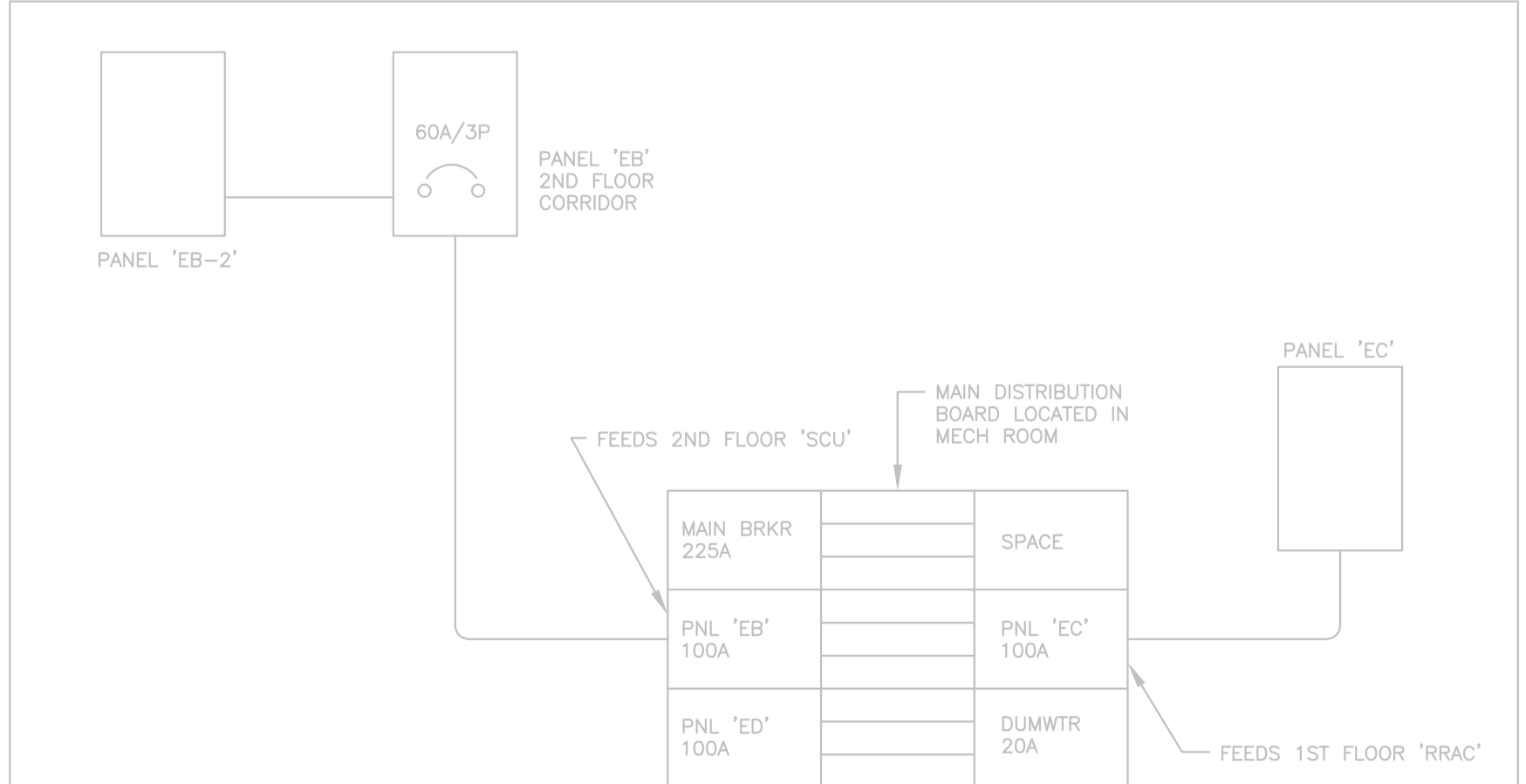
DESCRIPTION	KW	BKR	CIRCUIT NO.	BKR	KW	DESCRIPTION
RECEPTACLE RRAC 01	15	1	2	15		RECEPTACLE RRAC 13
RECEPTACLE RRAC 02	15	3	4	15		RECEPTACLE RRAC 14
RECEPTACLE RRAC 03	15	5	6	15		RECEPTACLE RRAC 15
RECEPTACLE RRAC 04	15	7	8	15		RECEPTACLE RRAC 16
RECEPTACLE RRAC 05	15	9	10	15		RECEPTACLE RRAC 17
RECEPTACLE RRAC 06	15	11	12	15		RECEPTACLE RRAC 18
RECEPTACLE RRAC 07	15	13	14	15		RECEPTACLE RRAC 19
RECEPTACLE RRAC 08	15	15	16	15		RECEPTACLE RRAC 20
RECEPTACLE RRAC 09	15	17	18	15		RECEPTACLE RRAC 21
RECEPTACLE RRAC 10	15	19	20	15		RECEPTACLE RRAC 22
RECEPTACLE RRAC 11	15	21	22	15		RECEPTACLE RRAC 23
RECEPTACLE RRAC 12	15	23	24	15		RECEPTACLE RRAC 24
POLICE LIGHT RRAC RIGHT	15	25	26	15		RECEPTACLE RRAC 25
SHOWER ROOM LIGHT	15	27	28	15		POLICE LIGHT RRAC LEFT
SPARE	15	29	30	15		CORR. LTG.
SPARE	15	31	32	15		CORR. NIGHT LTG.
SPARE	15	33	34	15		-
SPARE	15	35	36	15		-
SPARE	15	37	38	15		-
SPARE	15	39	40	15		-
-	15	41	42	15		-
-	15	43	44	15		-
-	15	45	46	15		-
-	15	47	48	15		-
TRANSFORMER ALARM	15	49	50	15		YARD LIGHT EAST
ALARM PANEL	15	51	52	15		YARD LIGHT WEST
A/C DUTY ROOM	15	53	54	15		SCU YARD LIGHT
A/C DUTY ROOM	15	55	56	15		S.O.
PIPE SHAFT PLUGS	15	57	58	15		S.O.
PIPE SHAFT PLUGS	15	59	60	15		DUTY ROOM PLUGS
PANTRY PLUGS	15	61	62	15		DUTY ROOM PLUGS
O.P.R. PRINT SHOP	15	63	64	15		DUTY ROOM PLUGS
O.P.R. CONTROL ROOM	15	65	66	15		DUTY ROOM PLUGS
TOTAL	x					TOTAL x

- EXERCISE YARD
- DRAWING KEY NOTES:**
- 400mm x 400mm x 150mm JUNCTION BOX.
  - 350mm x 350mm x 150mm JUNCTION BOX.
  - 300mm x 300mm x 150mm JUNCTION BOX.
  - 300mm x 300mm x 150mm JUNCTION BOX.
  - 250mm x 250mm x 150mm JUNCTION BOX.
  - 200mm x 200mm x 150mm JUNCTION BOX.
  - 150mm x 150mm x 150mm JUNCTION BOX.
  - RELOCATE EXISTING CAMERA TO ACCOMMODATE MECHANICAL INSTALLATION AND LINE OF SIGHT
  - EXISTING CAMERA TO REMAIN IN PLACE
  - NEW CAMERA TO BE ADDED

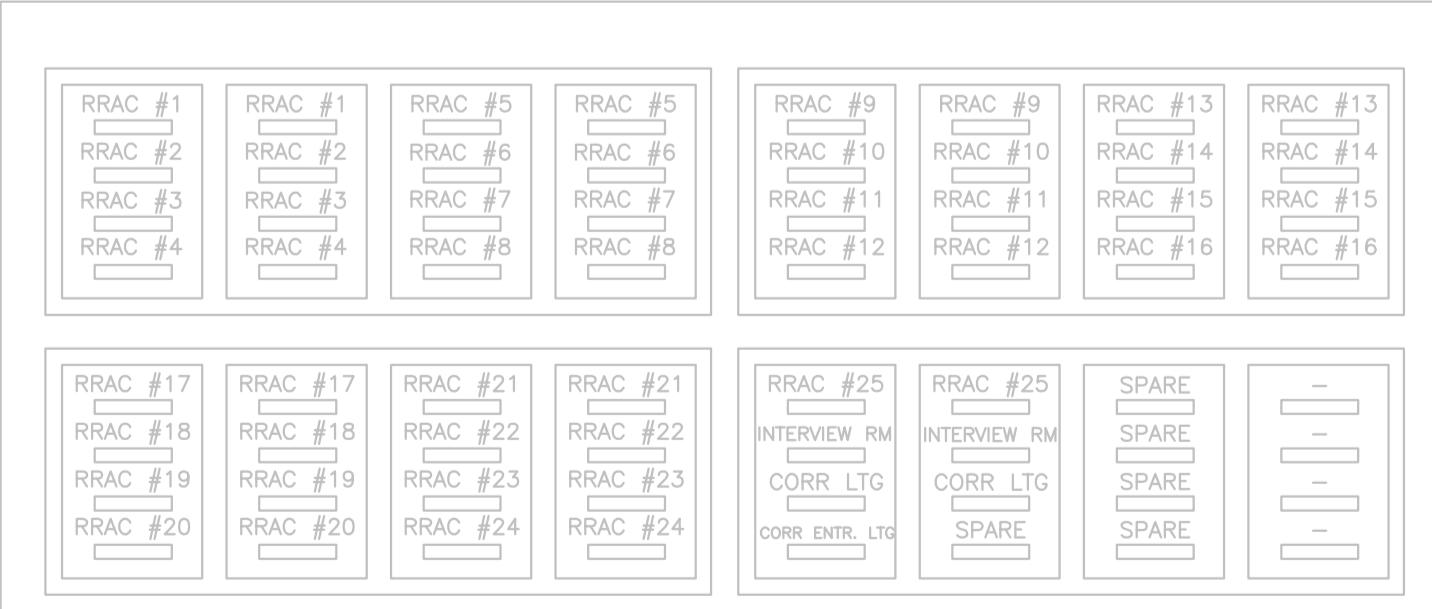
- GENERAL NOTES:**
1. REMOVE 7 EXISTING TYPE-A FLUORESCENT LUMINAIRES IN CORRIDOR AND REPLACE WITH 7 NEW TYPE-L LED LUMINAIRES, USING EXISTING CIRCUITS.
  2. RELOCATE LUMINAIRES TO FREE UP SPACE FOR MECHANICAL EQUIPMENT.
  3. RELOCATE EMERGENCY LIGHTS TO FREE UP SPACE FOR MECHANICAL EQUIPMENT.
  4. APPLY SECURITY SEALANT AROUND NEW AND RELOCATED LUMINAIRES.
  5. REMOVE AND REPLACE CONDUIT TO FREE UP SPACE FOR MECHANICAL EQUIPMENT.
  6. CONDUITS IN INMATE ACCESSIBLE AREAS TO BE RIGID GALVANIZED STEEL. CONDUITS IN CONTROL POST AND OTHER AREAS NOT ACCESSIBLE BY INMATES TO BE EMT.
  7. HIRE AND PAY FOR GENETEC/PIVOT3 CERTIFIED CONTRACTORS TO PERFORM ANY WORKS FOR SECURITY CAMERAS. HOULE ELECTRIC AND PALADIN SECURITY COMPANIES ARE KNOWN TO BE CERTIFIED AND THERE MAY BE OTHER CERTIFIED COMPANIES/CONTRACTORS AS WELL.
  8. THE LOCATIONS OF ALL NEW AND EXISTING/RELOCATED CAMERAS MUST BE COORDINATED WITH THE DEPARTMENTAL REPRESENTATIVE.



DETAIL #1: M2c - TYPICAL CELL PLAN  
SCALE: NTS



DETAIL #2: SINGLE LINE DIAGRAM - BLDG. M2  
SCALE: NTS



DETAIL #3: SWITCHING PANEL FOR BUILDING M2c (RRAC)  
SCALE: NTS

RELAY PANEL 'RP-EC' EXISTING

DESCRIPTION	CCT. #	RELAY NO.	CCT. #	DESCRIPTION
RECEPTACLE RRAC 01	EC2-1	1	2	EC2-2 RECEPTACLE RRAC 13
RECEPTACLE RRAC 02	EC2-3	3	4	EC2-4 RECEPTACLE RRAC 14
RECEPTACLE RRAC 03	EC2-5	5	6	EC2-6 RECEPTACLE RRAC 15
RECEPTACLE RRAC 04	EC2-7	7	8	EC2-8 RECEPTACLE RRAC 16
RECEPTACLE RRAC 05	EC2-9	9	10	EC2-10 RECEPTACLE RRAC 17
RECEPTACLE RRAC 06	EC2-11	11	12	EC2-12 RECEPTACLE RRAC 18
RECEPTACLE RRAC 07	EC2-13	13	14	EC2-14 RECEPTACLE RRAC 19
RECEPTACLE RRAC 08	EC2-15	15	16	EC2-16 RECEPTACLE RRAC 20
RECEPTACLE RRAC 09	EC2-17	17	18	EC2-18 RECEPTACLE RRAC 21
RECEPTACLE RRAC 10	EC2-19	19	20	EC2-20 RECEPTACLE RRAC 22
RECEPTACLE RRAC 11	EC2-21	21	22	EC2-22 RECEPTACLE RRAC 23
RECEPTACLE RRAC 12	EC2-23	23	24	EC2-24 RECEPTACLE RRAC 24
NIGHT LIGHT RRAC RIGHT	EC2-25	25	26	EC2-26 RECEPTACLE RRAC 25
SHOWER ROOM LIGHT	EC2-27	27	28	EC2-28 NIGHT LIGHT RRAC LEFT
LTG. CORR. ENTRANCE	EC2-29	29	30	EC2-30 CORR. LTG.
SPARE		31	32	EC2-32 CORR. NIGHT LTG.
SPARE		33	34	
SPARE		35	36	
SPARE		37	38	
SPARE		39	40	
		41	42	
TOTAL	x			TOTAL x

1	RE-ISSUED FOR TENDER ADDENDUM E01	2021.10.28
---	-----------------------------------	------------

Revision	Description/Description	Date
----------	-------------------------	------

Client/client  
**CORRECTIONAL SERVICE CANADA**

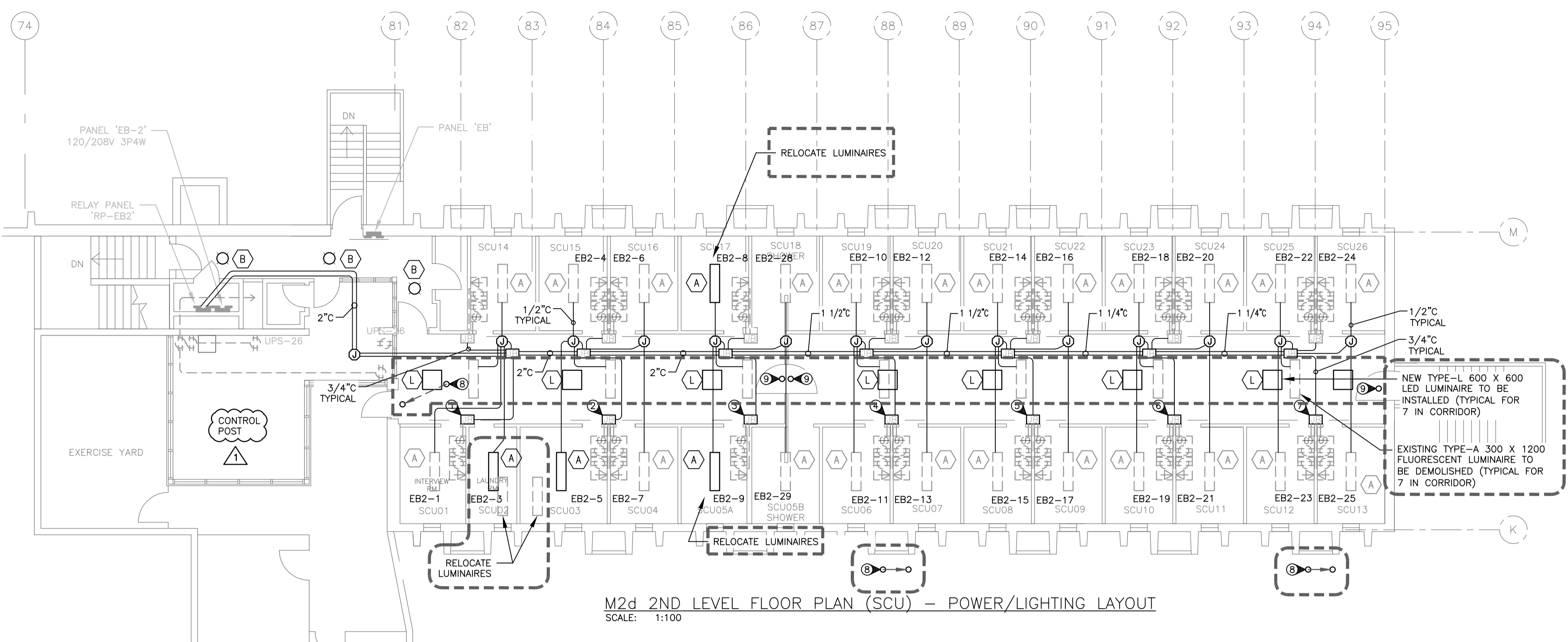
Project title/Titre du projet  
**MATSQUI INSTITUTION  
ABBOTSFORD, BC  
33344 KING ROAD**  
**MATSQUI LIVING UNIT 5  
UNDERSLAB SUPPLY VENTING**

Consultant Signature Only  
Designed by/Concept par Norman Wong  
Drawn by/Dessiné par Thang Cao  
PWGSC Project Manager/Administrateur de Projets TPSGC Ken Wendt  
Regional Manager, Architectural and Engineering Services Gestionnaire régionale, Services d'architectural et de génie, TPSGC Freeipal Paul  
Drawing title/Titre du dessin

**ELECTRICAL - FIRST FLOOR PLAN**







PANEL 'EB-2'		EXISTING				
DESCRIPTION	KW	BKR	CIRCUIT NO.	BKR	KW	DESCRIPTION
RECEPTACLE SCU 01	15	1	2	15	15	RECEPTACLE SCU 14
RECEPTACLE SCU 02	15	3	4	15	15	RECEPTACLE SCU 15
RECEPTACLE SCU 03	15	5	6	15	15	RECEPTACLE SCU 16
RECEPTACLE SCU 04	15	7	8	15	15	RECEPTACLE SCU 17
RECEPTACLE SCU 05A	15	9	10	15	15	RECEPTACLE SCU 19
RECEPTACLE SCU 06	15	11	12	15	15	RECEPTACLE SCU 20
RECEPTACLE SCU 07	15	13	14	15	15	RECEPTACLE SCU 21
RECEPTACLE SCU 08	15	15	16	15	15	RECEPTACLE SCU 22
RECEPTACLE SCU 09	15	17	18	15	15	RECEPTACLE SCU 23
RECEPTACLE SCU 10	15	19	20	15	15	RECEPTACLE SCU 24
RECEPTACLE SCU 11	15	21	22	15	15	RECEPTACLE SCU 25
RECEPTACLE SCU 12	15	23	24	15	15	RECEPTACLE SCU 26
RECEPTACLE SCU 13	15	25	26	15	15	NIGHT LIGHT LEFT
NIGHT LIGHT RIGHT	15	27	28	15	15	SHOWER SCU 18
SHOWER SCU 5B	15	29	30	15	15	CORRIDOR LTG
SPARE	15	31	32	15	15	CORRIDOR LTG
SPARE	15	33	34	15	15	CORRIDOR ENTRANCE LTG
SPARE	15	35	36	-	-	-
SPARE	15	37	38	-	-	-
SPARE	15	39	40	-	-	-
SPARE	15	41	42	-	-	-
-	-	43	44	-	-	-
-	-	45	46	-	-	-
-	-	47	48	15	15	DOOR LOCK AND BELL
-	-	49	50	15	15	DDC- GUARD BUBBLE CEILING
-	-	51	52	15	15	CONTROL POST LTG + EMERGENCY
-	-	53	54	15	15	CONTROL POST PLUGS
-	-	55	56	15	15	CCTV PANEL
-	-	57	58	15	15	CONTROL POST PLUGS
-	-	59	60	15	15	EXIT & EMERGENCY LTG.
TOTAL	x					TOTAL x

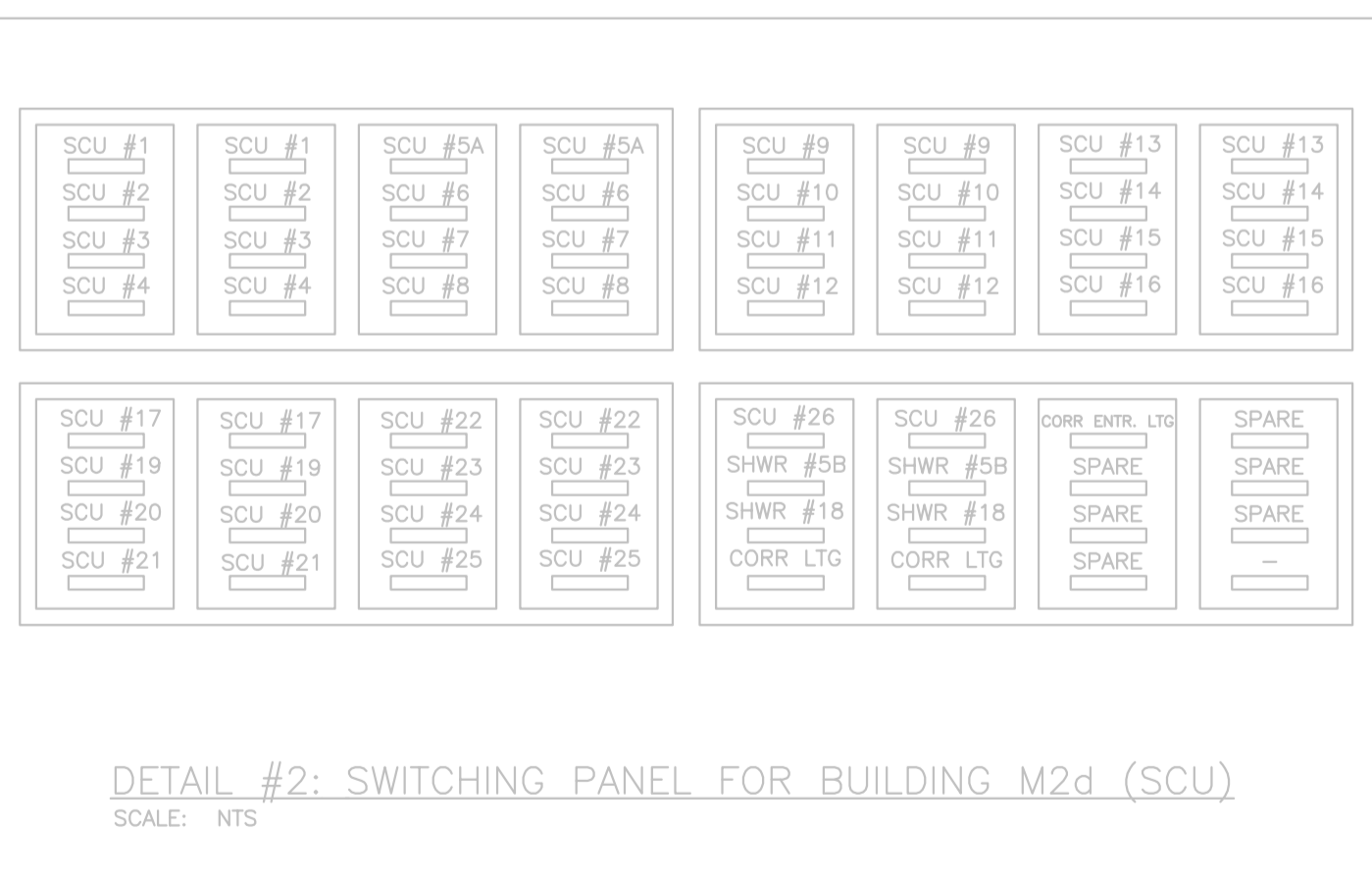
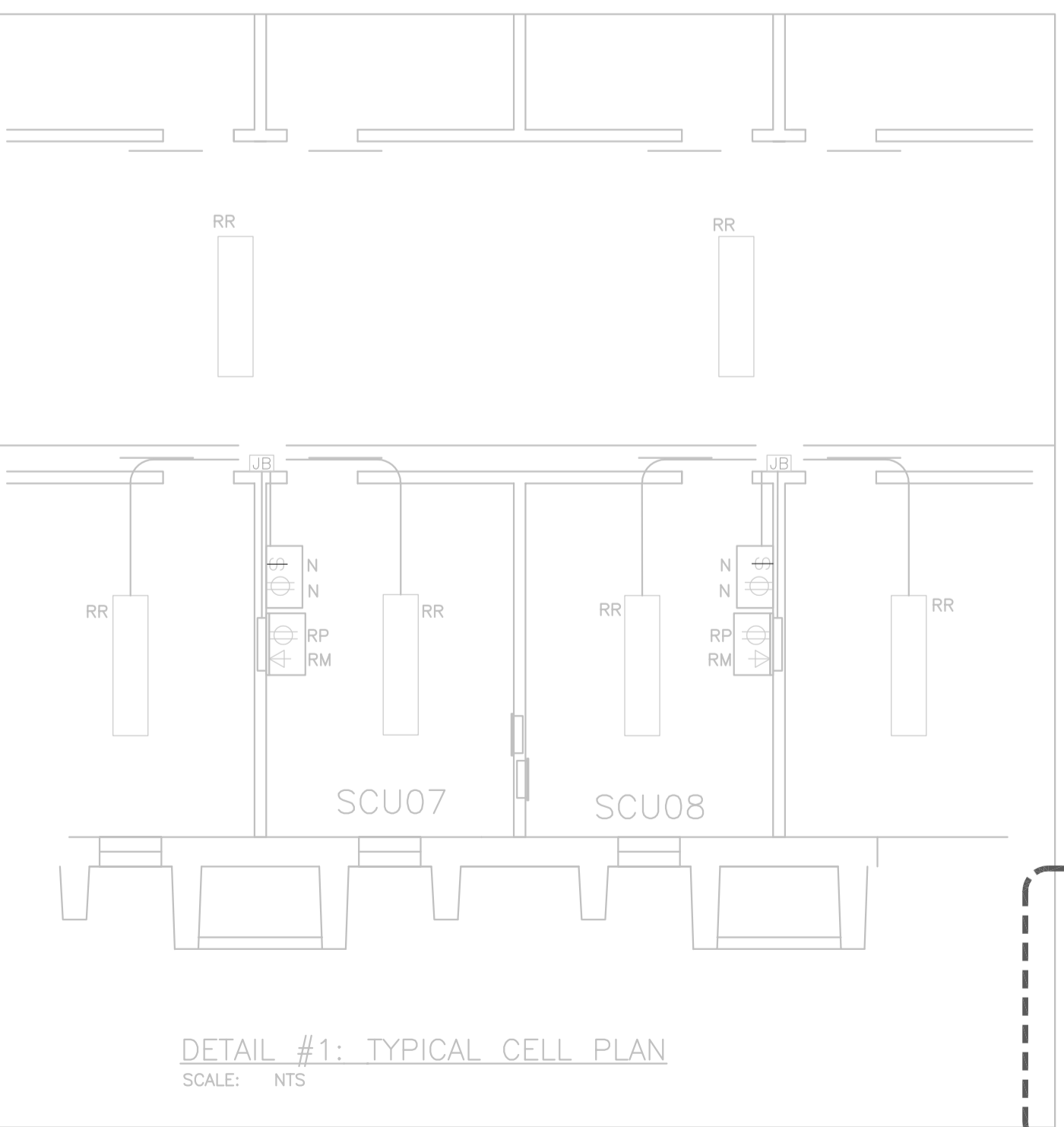
RELAY PANEL 'RP-EB2'		EXISTING		
DESCRIPTION	CCT. #	RELAY NO.	CCT. #	DESCRIPTION
RECEPTACLE SCU 01	EB2-1	1	2	EB2-2 RECEPTACLE SCU 14
RECEPTACLE SCU 02	EB2-3	3	4	EB2-4 RECEPTACLE SCU 15
RECEPTACLE SCU 03	EB2-5	5	6	EB2-6 RECEPTACLE SCU 16
RECEPTACLE SCU 04	EB2-7	7	8	EB2-8 RECEPTACLE SCU 17
RECEPTACLE SCU 05A	EB2-9	9	10	EB2-10 RECEPTACLE SCU 19
RECEPTACLE SCU 06	EB2-11	11	12	EB2-12 RECEPTACLE SCU 20
RECEPTACLE SCU 07	EB2-13	13	14	EB2-14 RECEPTACLE SCU 21
RECEPTACLE SCU 08	EB2-15	15	16	EB2-16 RECEPTACLE SCU 22
RECEPTACLE SCU 09	EB2-17	17	18	EB2-18 RECEPTACLE SCU 23
RECEPTACLE SCU 10	EB2-19	19	20	EB2-20 RECEPTACLE SCU 24
RECEPTACLE SCU 11	EB2-21	21	22	EB2-22 RECEPTACLE SCU 25
RECEPTACLE SCU 12	EB2-23	23	24	EB2-24 RECEPTACLE SCU 26
RECEPTACLE SCU 13	EB2-25	25	26	EB2-26 NIGHT LIGHT LEFT
NIGHT LIGHT RIGHT	EB2-27	27	28	EB2-28 SHOWER SCU 18
SHOWER SCU 5B	EB2-29	29	30	EB2-30 CORRIDOR LTG
SPARE	EB2-31	31	32	EB2-32 CORRIDOR LTG
SPARE	EB2-33	33	34	EB2-34 CORRIDOR ENTRANCE LTG
SPARE	EB2-35	35	36	-
SPARE	EB2-37	37	38	-
SPARE	EB2-39	39	40	-
SPARE	EB2-41	41	42	-
TOTAL	x			TOTAL x



EXTERNAL VIDEO CAMERA RELOCATIONS

- DRAWING KEY NOTES:**
- 400mm x 400mm x 150mm JUNCTION BOX.
  - 350mm x 350mm x 150mm JUNCTION BOX.
  - 300mm x 300mm x 150mm JUNCTION BOX.
  - 300mm x 300mm x 150mm JUNCTION BOX.
  - 250mm x 250mm x 150mm JUNCTION BOX.
  - 200mm x 200mm x 150mm JUNCTION BOX.
  - 150mm x 150mm x 150mm JUNCTION BOX.
  - RELOCATE EXISTING CAMERA TO ACCOMMODATE MECHANICAL INSTALLATION AND LINE OF SIGHT
  - EXISTING CAMERA TO REMAIN IN PLACE

- GENERAL NOTES:**
1. REMOVE 7 EXISTING TYPE-A FLUORESCENT LUMINAIRES IN CORRIDOR AND REPLACE WITH 7 NEW TYPE-L LED LUMINAIRES, USING EXISTING CIRCUITS.
  2. RELOCATE LUMINAIRES AS SHOWN ON MECHANICAL DRAWINGS TO FREE UP SPACE FOR MECHANICAL EQUIPMENT.
  3. RELOCATE EMERGENCY LIGHTS AS SHOWN ON MECHANICAL DRAWINGS TO FREE UP SPACE FOR MECHANICAL EQUIPMENT.
  4. SEAL IN AROUND ALL NEW AND RELOCATED LUMINAIRES WITH PICK-PROOF SECURITY SEALANT.
  5. REMOVE AND REPLACE CONDUIT AS SHOWN ON MECHANICAL DRAWINGS TO FREE UP SPACE FOR MECHANICAL EQUIPMENT.
  6. WHERE CONDUITS ARE RUN ON THE CEILING IN THE CORRIDORS BETWEEN CELLS, FIX THE CONDUITS TO THE UNDERSIDE OF EACH PRE-CAST CONCRETE BEAM. USE TWO HOLE STRAPS TO SUPPORT THE CONDUIT ON EACH SIDE OF EACH BEAM. PROVIDE UNISTRUT IN THE MIDDLE BETWEEN EVERY TWO BEAMS TO PROPERLY SUPPORT THE CONDUITS. ATTACH TO THE UNDERSLAB. MOUNT ALL JUNCTION BOXES ON THE BEAMS.
  7. WHERE CONDUITS ARE RUN ON THE WALLS IN THE CORRIDORS BETWEEN CELLS, FIX THE CONDUITS AT MAXIMUM 1200MM (4'-0") CENTERS. USE TWO HOLE STRAPS.
  8. CONDUIT RUN INSIDE CELLS SHALL BE FIXED ON 600MM (2'-0") CENTERS WITH TWO HOLE STRAPS. ALL NEW CONDUITS IN THE CELLS TO RUN PARALLEL TO EXISTING CONDUITS WITHOUT CROSSING/OVERLAPPING THEM.
  9. SEAL IN BEHIND ALL CONDUITS IN CELLS BY TROWELLING IN THE PICK-PROOF SECURITY SEALANT. FOLLOWING INSTALLATION, PAINT INTERIOR.
  10. SEAL CONDUIT PENETRATIONS THROUGH WALLS INTO CELLS FROM CORRIDOR OUTSIDE CELLS. DRILL HOLES ONLY SLIGHTLY OVERSIZED. DO NOT KNOCK OUT LARGE OPENINGS. GET APPROVED BY DEPARTMENTAL REPRESENTATIVE. SEAL WITH PICK-PROOF SECURITY SEALANT.
  11. TORX HEAD TAMPER PROOF SCREWS WITH CENTRE PIN REJECT TO BE USED IN CELLS FOR CONDUIT FIXINGS AND BOX COVER PLATES ETC. AND REGULAR ROBERTSON HEAD ELSEWHERE.
  12. CONDUITS IN INMATE ACCESSIBLE AREAS TO BE RIGID GALVANIZED STEEL. CONDUITS IN CONTROL POST AND OTHER AREAS NOT ACCESSIBLE BY INMATES TO BE EMT.
  13. HIRE AND PAY FOR GENETEC/PIVOT3 CERTIFIED CONTRACTORS TO PERFORM ANY WORKS FOR SECURITY CAMERAS. HOULE ELECTRIC AND PALADIN SECURITY COMPANIES ARE KNOWN TO BE CERTIFIED AND THERE MAY BE OTHER CERTIFIED COMPANIES/CONTRACTORS AS WELL.
  14. THE LOCATIONS OF ALL NEW AND EXISTING/RELOCATED CAMERAS MUST BE COORDINATED WITH THE DEPARTMENTAL REPRESENTATIVE.



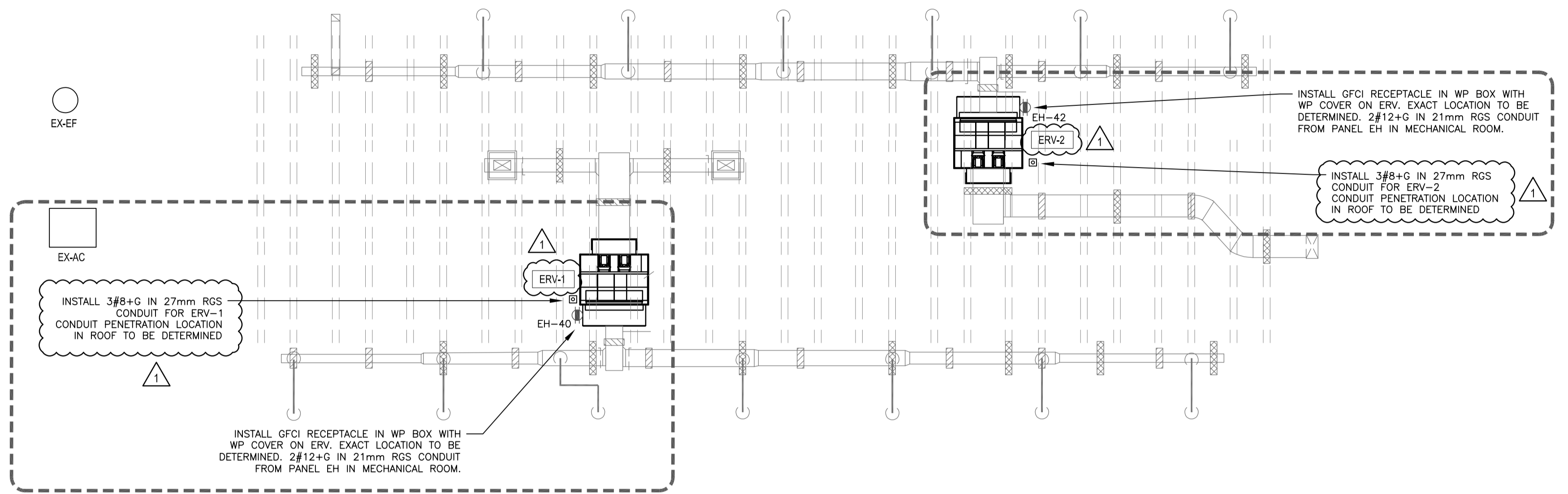
**NEW LUMINAIRE SCHEDULE**

TYPE	DESCRIPTION	CATALOGUE NO.	VOLT/BALLAST	LAMPS NO. (EACH)	MOUNTING	REMARKS
L	SURFACE MOUNT LED LUMINAIRE COMPLETE WITH LED NIGHT LIGHT. SUITABLE FOR SURFACE CONDUIT.	KENALL SDD2-9/9-25L40K-DCC-120-1/J-1-DLN	120V	-	LED + LED NIGHT LIGHT SURFACE	PROVIDE 14 LUMINAIRES, 7 FOR EACH FLOOR.

\* PRODUCTS SPECIFIED ARE MINIMUM ACCEPTABLE STANDARD.

1	RE-ISSUED FOR TENDER ADDENDUM E01	2021.10.28
Revision	Description/Description	Date
Client/client		
<b>CORRECTIONAL SERVICE CANADA</b>		
Project title/Titre du projet		
<b>MATSQUI INSTITUTION ABBOTSFORD, BC 33344 KING ROAD</b>		
<b>MATSQUI LIVING UNIT 5 UNDERSLAB SUPPLY VENTING</b>		
Consultant Signature Only		
Designed by/Concept par Norman Wong		
Drawn by/Dessiné par Thang Cao		
PWGSC Project Manager/Administrateur de Projets TPSGC Ken Wendt		
Regional Manager, Architectural and Engineering Services Gestionnaire régionale, Services d'architecture et de génie, TPSGC Frederic Paul		
Drawing title/Titre du dessin		
<b>ELECTRICAL - SECOND FLOOR PLAN</b>		
Project No./No. du projet R.11315.001	Sheet/Fauille <b>E202</b> OF	Revision no./ La Révision no. <b>1</b>





ROOF FLOOR PLAN  
1:100  
SCALE: 1:100

1	RE-ISSUED FOR TENDER ADDENDUM E01	2021.10.28
---	-----------------------------------	------------

Revision	Description/Description	Date
----------	-------------------------	------

Client/client  
**CORRECTIONAL SERVICE CANADA**

Project title/Titre du projet  
**MATSQUI INSTITUTION  
ABBOTSFORD, BC  
33344 KING ROAD  
  
MATSQUI LIVING UNIT 5  
UNDERSLAB SUPPLY VENTING**

Consultant Signature Only

Designed by/Concept par  
Norman Wong

Drawn by/Dessiné par  
Thang Cao

PWGSC Project Manager/Administrateur de Projets TPSGC  
Ken Wendt

Regional Manager, Architectural and Engineering Services  
Gestionnaire régionale, Services d'architecture et de génie, TPSGC  
Frederic Paul

Drawing title/Titre du dessin  
**ELECTRICAL -  
ROOF PLAN**

Project No./No. du projet R.111315.001	Sheet/Feuille <b>E203</b> OF 1	Revision no./La Révision no. <b>1</b>
---	---	--



PANEL 'EH'							NEW	
DESCRIPTION	KW	BKR	CIRCUIT NO.	BKR	KW	DESCRIPTION		
EH-1 SERVICE CHASE HEATER	0.5	15	1					
EH-2 SERVICE CHASE HEATER	0.5	15	3					
EH-3 SERVICE CHASE HEATER	0.5	15	5					
EH-4 SERVICE CHASE HEATER	0.5	15	7					
EH-5 SERVICE CHASE HEATER	0.5	15	9					
EH-6 SERVICE CHASE HEATER	0.5	15	11					
EH-7 SERVICE CHASE HEATER	0.5	15	13					
EH-8 SERVICE CHASE HEATER	0.5	15	15					
EH-9 SERVICE CHASE HEATER	0.5	15	17					
EH-10 SERVICE CHASE HEATER	0.5	15	19					
EH-11 SERVICE CHASE HEATER	0.5	15	21					
EH-12 SERVICE CHASE HEATER	0.5	15	23					
EH-13 SERVICE CHASE HEATER	0.5	15	25					
EH-14 SERVICE CHASE HEATER	0.5	15	27					
SPACE			29					
SPACE			31					
SPACE			33					
SPACE			35					
SPACE			37					
SPACE			39					
EF-K1 WALL EXH. FAN KITCHEN	0.35	15	41					
TOTAL	7.35 kW					TOTAL	32.3 kW	

SPECIFICATIONS

- 100A MAIN CIRCUIT BREAKER
- 225A BUS, 120/208V
- SEE SECTION 26 24 17

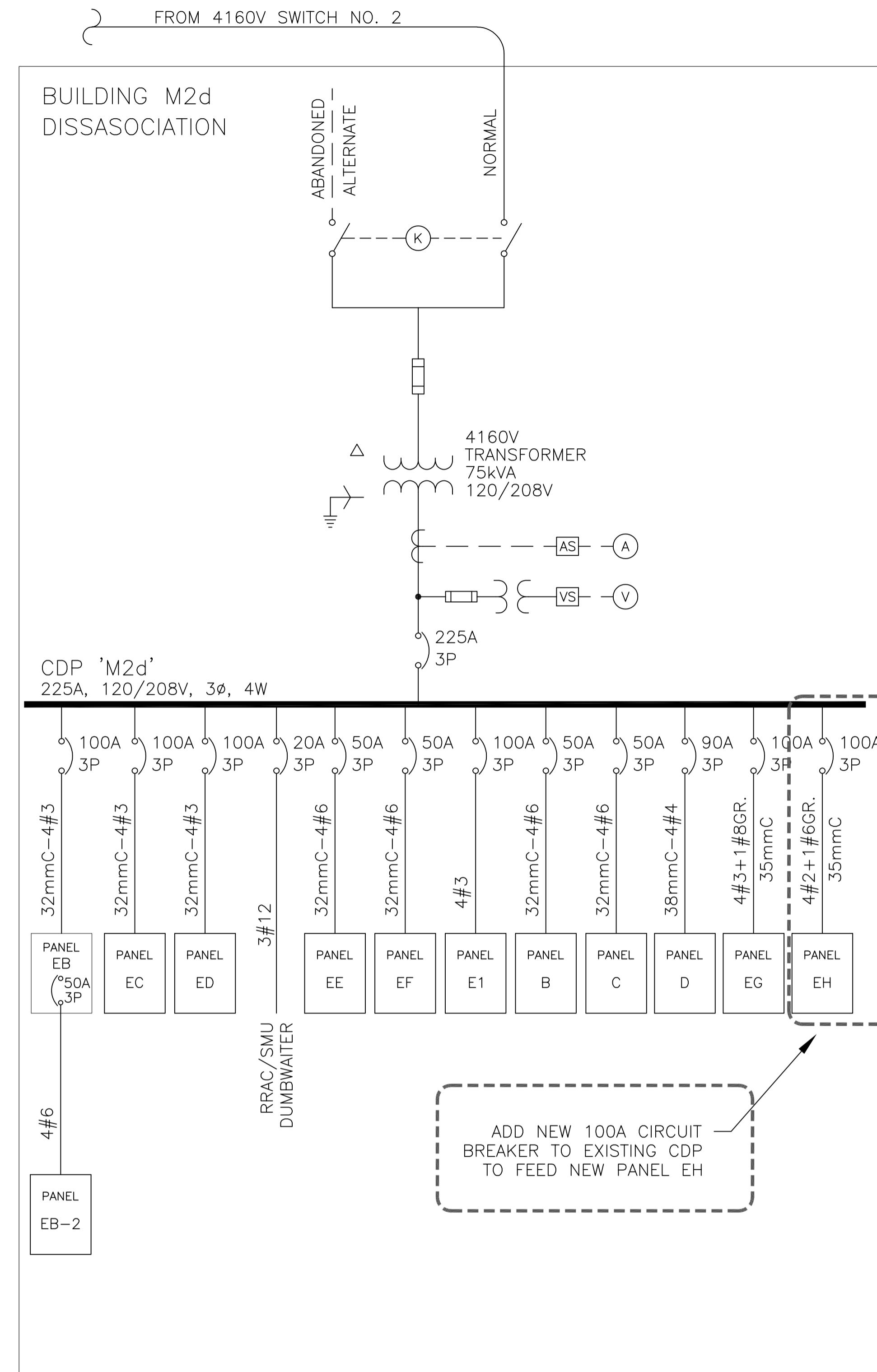
INSTALL NEW PANEL EH  
IN MECHANICAL ROOM

GENERAL NOTES:

- ARRANGE FOR ARC FLASH AND SHOCK HAZARD WARNING LABELS TO BE PUT ON ALL NEW PANELS.

Tag No.	Unit Description	Location	Volts	Phase	FLA	HP	Panel	Circuit No.	Conduit Size	Wire Size	Disc. Sw.
EF-K1	Kitchenette wall exhaust fan	Kitchenette - 1st floor	120	1	2.9	1/4	EH	41	21mm	2#12+G	E, 30A
ERV-1	Heat Recovery Unit - 2nd floor	Roof, straddling GL '86'	208	3	29.38	1+2	EH	2, 4, 6	27mm	3#8+G	M
ERV-2	Heat Recovery Unit - 1st floor	Roof, straddling GL '91'	208	3	29.38	1+2	EH	8, 10, 12	27mm	3#8+G	M
P-M2C-1	Hydronic heating secondary pump	Mechanical Room - 1st Floor	208	1	7.6	3/4	EH	26, 28	21mm	2#12+G	E, 30A
P-M2C-2	Hydronic heating secondary pump	Mechanical Room - 1st Floor	208	1	7.6	3/4	EH	30, 32	21mm	2#12+G	E, 30A
FC-Z3	Fan Coil	Mechanical Room - 1st Floor	208	3	15	2	EH	14, 16, 18	21mm	3#12+G	E, 30A
S-11	Exhaust Fan	Mechanical Room - 1st Floor	208	1	7.6	3/4	EH	20, 22	21mm	2#12+G	E, 30A
P-15	Hydronic pump	Mechanical Room - 1st Floor	120	1	5.8	1/4	EH	34	21mm	2#12+G	E, 30A
EH-1	Electrical heater	Exterior service chase	120	1	4.2		EH	1	21mm	2#12+G	E, 30A
EH-2	Electrical heater	Exterior service chase	120	1	4.2		EH	3	21mm	2#12+G	E, 30A
EH-3	Electrical heater	Exterior service chase	120	1	4.2		EH	5	21mm	2#12+G	E, 30A
EH-4	Electrical heater	Exterior service chase	120	1	4.2		EH	7	21mm	2#12+G	E, 30A
EH-5	Electrical heater	Exterior service chase	120	1	4.2		EH	9	21mm	2#12+G	E, 30A
EH-6	Electrical heater	Exterior service chase	120	1	4.2		EH	11	21mm	2#12+G	E, 30A
EH-7	Electrical heater	Exterior service chase	120	1	4.2		EH	13	21mm	2#12+G	E, 30A
EH-8	Electrical heater	Exterior service chase	120	1	4.2		EH	15	21mm	2#12+G	E, 30A
EH-9	Electrical heater	Exterior service chase	120	1	4.2		EH	17	21mm	2#12+G	E, 30A
EH-10	Electrical heater	Exterior service chase	120	1	4.2		EH	19	21mm	2#12+G	E, 30A
EH-11	Electrical heater	Exterior service chase	120	1	4.2		EH	21	21mm	2#12+G	E, 30A
EH-12	Electrical heater	Exterior service chase	120	1	4.2		EH	23	21mm	2#12+G	E, 30A
EH-13	Electrical heater	Exterior service chase	120	1	4.2		EH	25	21mm	2#12+G	E, 30A
EH-14	Electrical heater	Exterior service chase	120	1	4.2		EH	27	21mm	2#12+G	E, 30A
FC-Z3L	light	Mechanical Room - 1st Floor	120	1	0.11		EH	24	21mm	3#12+G	

E - supplied, installed and wired by Electrical, M - supplied, installed and wired by Mechanical



Revision	Description/Description	Date
1	RE-ISSUED FOR TENDER ADDENDUM E01	2021.10.28

CORRECTIONAL SERVICE CANADA

MATSQUI INSTITUTION  
ABBOTSFORD, BC  
33344 KING ROAD  
  
MATSQUI LIVING UNIT 5  
UNDERSLAB SUPPLY VENTING

Designed by/Concept par Norman Wong  
Drawn by/Dessiné par Thang Cao  
PWGSC Project Manager/Administrateur de Projets TPSOC Ken Wendt  
Regional Manager, Architectural and Engineering Services / Gestionnaire régionale, Services d'architectural et de génie, TPSOC Freestrip Paul

ELECTRICAL - PANEL 'EH' SCHEDULE SINGLE LINE DIAGRAM

