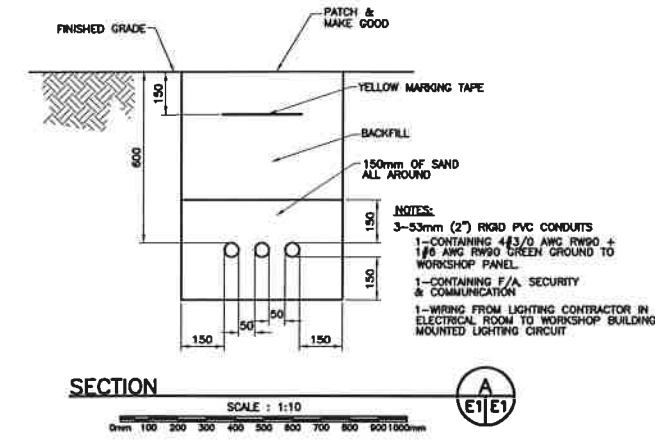
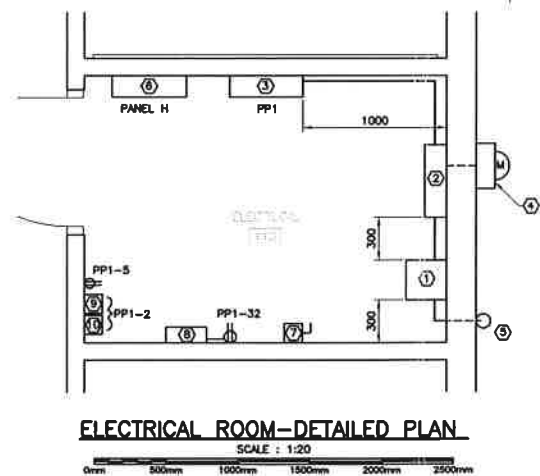
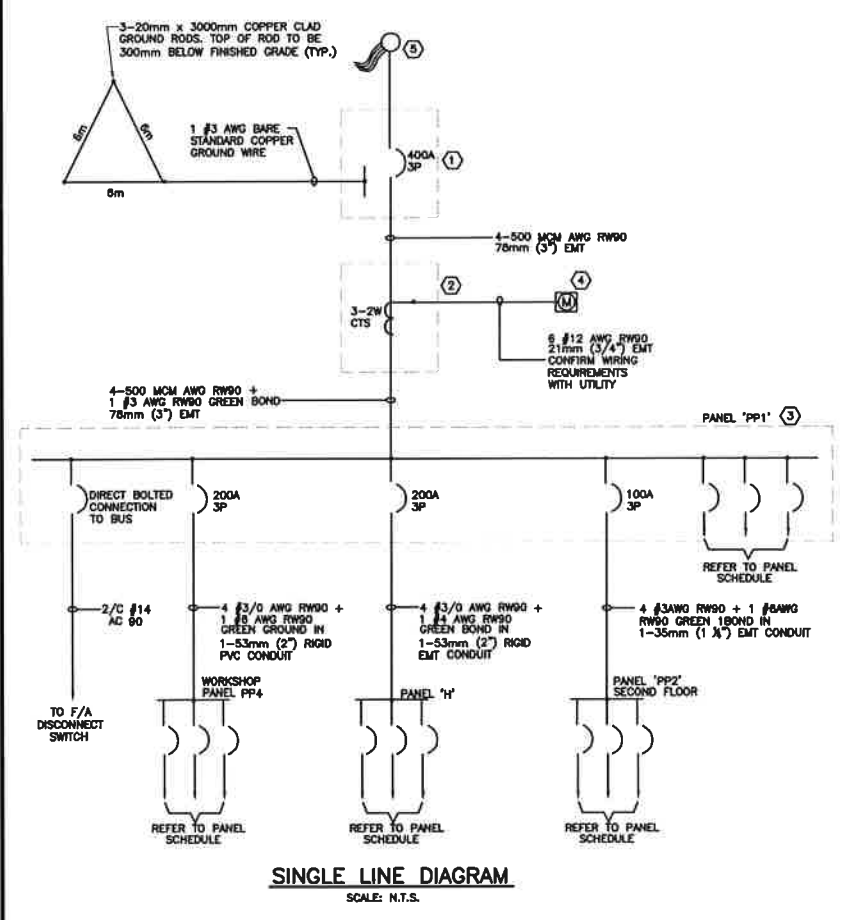
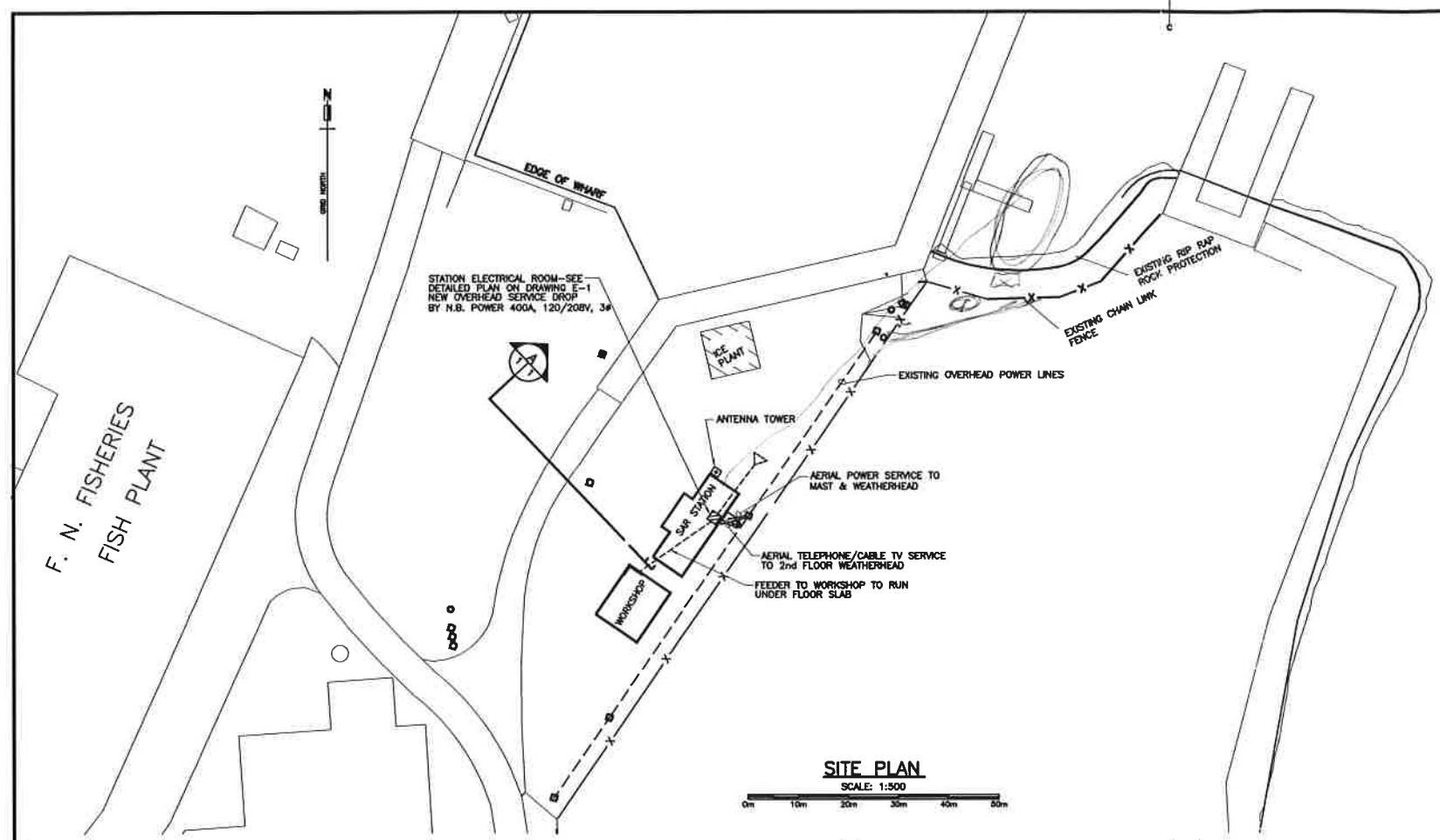


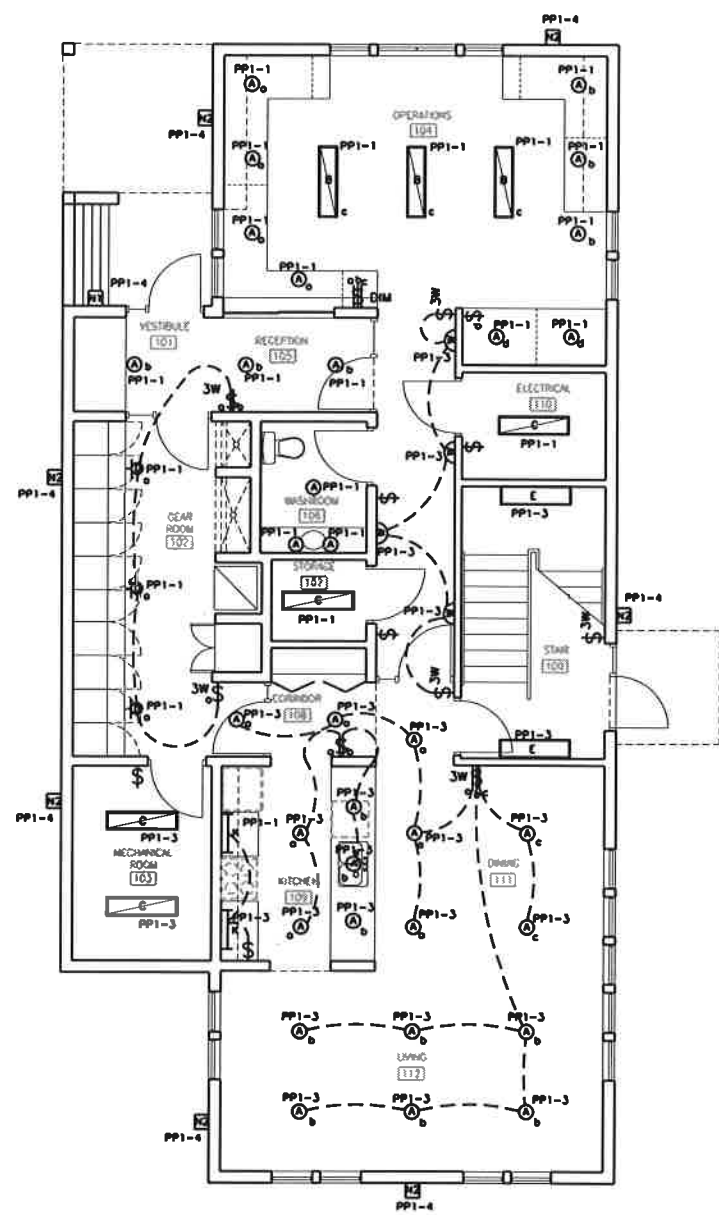
- NOTES:**
1. CO-ORDINATE WITH NB HYDRO FOR POWER SERVICE TO BUILDING. CARRY ALL COSTS.
 2. CO-ORDINATE WITH TELEPHONE/CABLE TV PROVIDER FOR SERVICE TO BUILDING. CARRY ALL COSTS.



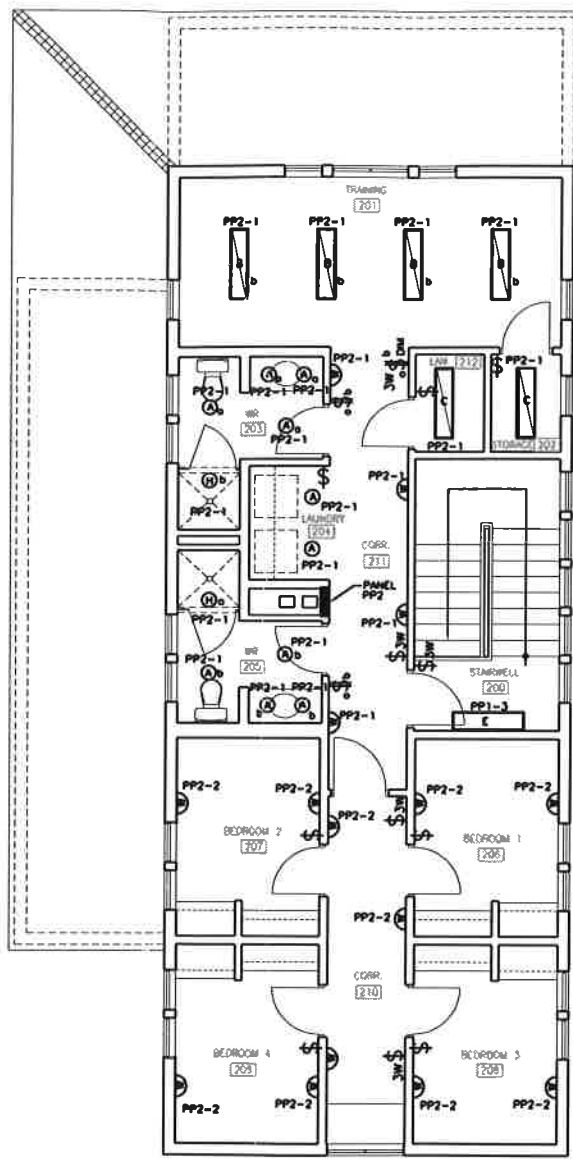
NOTE: -ALL DIMENSIONS SHOWN ARE MINIMUM AND ARE TO BE MAINTAINED.

- ELECTRICAL ROOM-SCHEDULE**
- 1 - 400AMP, 240 VOLT, 3 POLE, 4 WIRE, SOLID NEUTRAL SERVICE ENTRANCE RATED MAIN CIRCUIT BREAKER. EDMAC 1 ENCLOSURE, MOUNTED 1500mm A.F.F. O/C.
 - 2 - 750mm x 750mm x 250mm CT CABINET c/w 3-2 WIRE ENCLOSURE C.T.S. TO MEET UTILITY STANDARDS. EDMAC 1 ENCLOSURE, MOUNTED 1500mm A.F.F. O/C.
 - 3 - 400AMP, 120/208 VOLT, 3 ϕ , 4 WIRE, 80 CIRCUIT, DISTRIBUTION PANELBOARD, 400AMP COPPER MAINS & LUGS. EDMAC 1 ENCLOSURE, FLOOR MOUNTED.
 - 4 - 13 JAW, TRANSFORMER RATED METER SOCKET, FOR 400AMP, 120/208 VOLT, 3 PHASE SERVICE ENTRANCE. EDMAC 3R ENCLOSURE TO MEET UTILITY STANDARDS.
 - 5 - 78mm (3") RIGID PVC MAST & WEATHERHEAD c/w 4-500 MCM AWG RW90 CONDUCTORS, MAINTAIN REQUIRED DRIP LOOP. FINAL CONNECTIONS BY N.B. POWER.
 - 6 - 200AMP, 120/208 VOLT, 3 ϕ , 4 WIRE, 42 CIRCUIT DISTRIBUTION PANEL BOARD, PANEL 'H'.
 - 7 - 30AMP, 250V, 2 POLE, FUSED DISCONNECT SWITCH, FUSED 15AMP, USE ONLY 1 POLE, TO BE PAINTED RED & PADLOCKED, PADLOCK BY CONTRACTOR.
 - 8 - SECURITY SYSTEM CONTROL PANEL.
 - 9 - ASTRONOMICAL DIGITAL TIME CLOCK.
 - 10 - 2 POLE LIGHTING CONTRACTOR.

revisions	date
project	CCG STATION SHIPPAGAN POSTE de la GCC de SHIPPAGAN SHIPPAGAN COMTE de GLOUCESTER COUNTY, N.B.
drawing	ELECTRICAL SITE PLAN, SINGLE LINE DIAGRAM & ELECTRICAL ROOM DETAILED PLAN
designed	G. BOWSER
date	FEB. 2007
drawn	R.L. SMELTZER
date	FEB. 2007
checked	
approved	
title	
scale	
PMSC Project Manager	Administrateur de projet 89502
project number	303436
drawing no.	E-1



FIRST FLOOR PLAN
SCALE 1:50



SECOND FLOOR PLAN
SCALE 1:50

LIGHTING LEGEND

- NOTES:**
THE STANDARD OF ACCEPTANCE AS LISTED BELOW DOES NOT RESTRICT OTHER MANUFACTURES FROM BIDDING THIS PROJECT. ALTERNATE MANUFACTURES TO SEEK APPROVAL AS AN ACCEPTED ALTERNATE AS STIPULATED IN THE CONTRACT DOCUMENTS GENERAL CONDITIONS.
- ⊙ - RECESSED, COMPACT FLUORESCENT DOWN LIGHT
c/w 13W DITL FL LAMPS.
RECESSED IN GYPSUMBOARD CEILING.
LITHONIA CAT & L10F SERIES, PREMIUM BAFFLE,
WIDE FLANGE, WHITE IN COLOUR.
 - ▭ - 305 x 1220mm, 2 LAMP FLUORESCENT LUMINAIRE,
SURFACE MOUNTED. c/w DIMMING BALLAST
AND TB LAMPS.
LITHONIA ANIMATE SERIES.
 - ▭ - 1220mm INDUSTRIAL TYPE, 2 LAMP FLUORESCENT FIXTURE,
SOLID REFLECTOR, CHAIN SUSPENDED.
c/w TB LAMPS AND BALLAST.
LITHONIA STANDARD INDUSTRIAL SERIES.
 - ⊙ - 100W INCANDESCENT VAPOR PROOF FIXTURE
c/w GLOBE AND GUARD AND 100W INCANDESCENT LAMP.
WALL MOUNTED ON BULKHEAD ABOVE LOCKERS.
GUTH LIGHTING VP SERIES.
 - ▭ - 1220mm, 2 LAMP FLUORESCENT LUMINAIRE,
c/w TB LAMPS AND BALLASTS.
SURFACE MOUNTED ON WALL. 2.44m A.F.F.
LITHONIA ALL PURPOSE WALL BRACKET WC SERIES.
 - ⊙ - 80w, INCANDESCENT SHOWER LIGHT VAPOR PROOF,
SURFACE MOUNTED IN GYPSUM BOARD CEILING.
LITHONIA VM RUGH SURFACE FIXTURE.
 - ▭ - SURFACE MOUNTED WALL SCOUCE.
c/w 2-13W T1 COMPACT FLUORESCENT LAMPS.
SURFACE MOUNTED ON WALL 1.83m A.F.F.
LITHONIA QUARTER SPHERE WALL SCONCE
MODEL # 119430L.
 - ⊙ - 35 WATT, 120V CAST WALL PACK. c/w
35 WATT MPS LAMP. MOUNTED 1.83m
ABOVE LANDING AT EXTERIOR ENTRANCES.
LITHONIA TWP SERIES c/w POLYCARBONATE LENS.
 - ⊙ - 70 WATT, 120V CAST WALL PACK. c/w
70 WATT MPS LAMP. MOUNTED
LITHONIA TWP SERIES c/w POLYCARBONATE LENS.
 - ⊙ - 15AMP, 120V, SINGLE THROW,
SINGLE POLE TOGGLE SWITCH,
3 WAY TOGGLE SWITCH AND
4 WAY TOGGLE SWITCH RESPECTIVELY.
SWITCHING AS NOTED BY LOWER CASE LETTER.
 - ▭ - 800mm SINGLE LAMP STRIP LIGHT,
MOUNTED UNDER CABINET.
 - ⊙ - 15AMP, 120V ARCHITECTURAL DIMMER

<table border="1"> <tr> <td>A</td> <td>A</td> </tr> <tr> <td>C</td> <td>BC</td> </tr> </table>	A	A	C	BC	<p>Approved as: Architect</p> <p>Approved as: Electrical Engineer</p> <p>Checked as: Draftsman</p>
A	A				
C	BC				

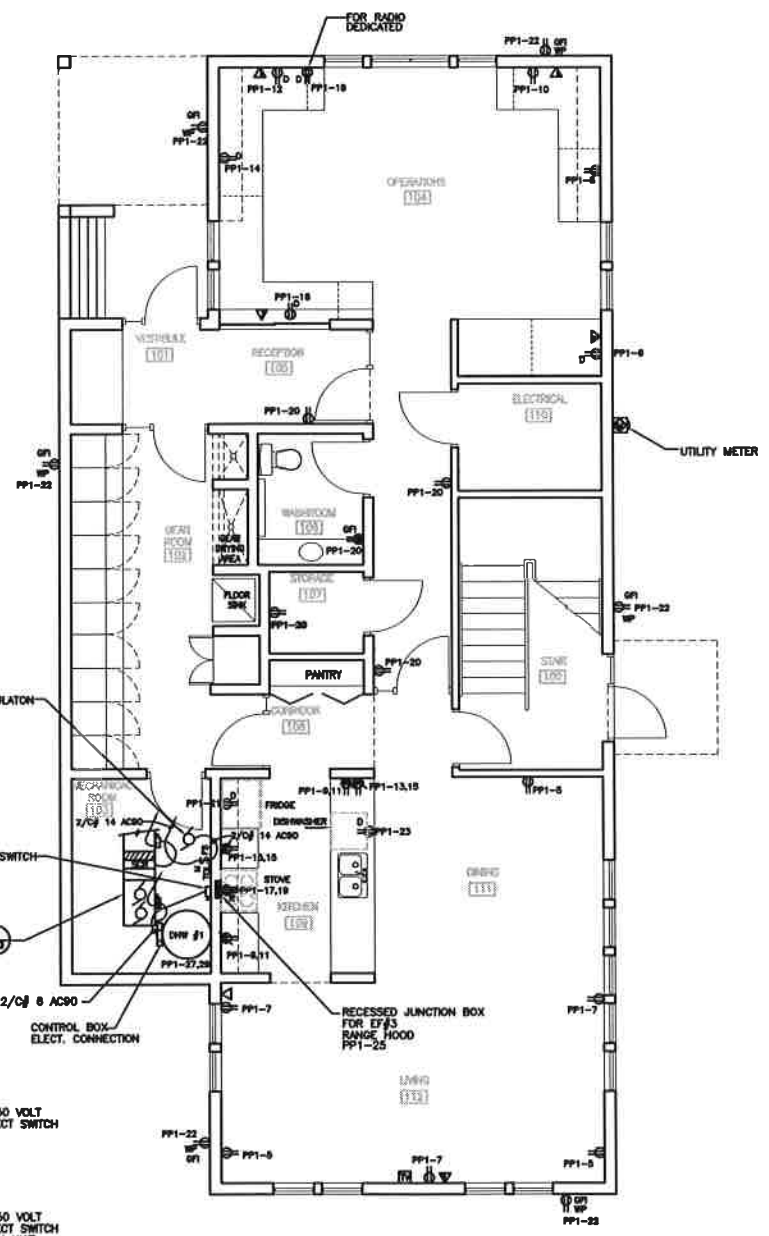
PROJECT
ODS STATION SHIPPAN
POUR DE LA GDS DE SHIPPAN
SHIPPAN

COMITÉ DE CONSULTER GÉNÉRAL, N.B.

DRAWING

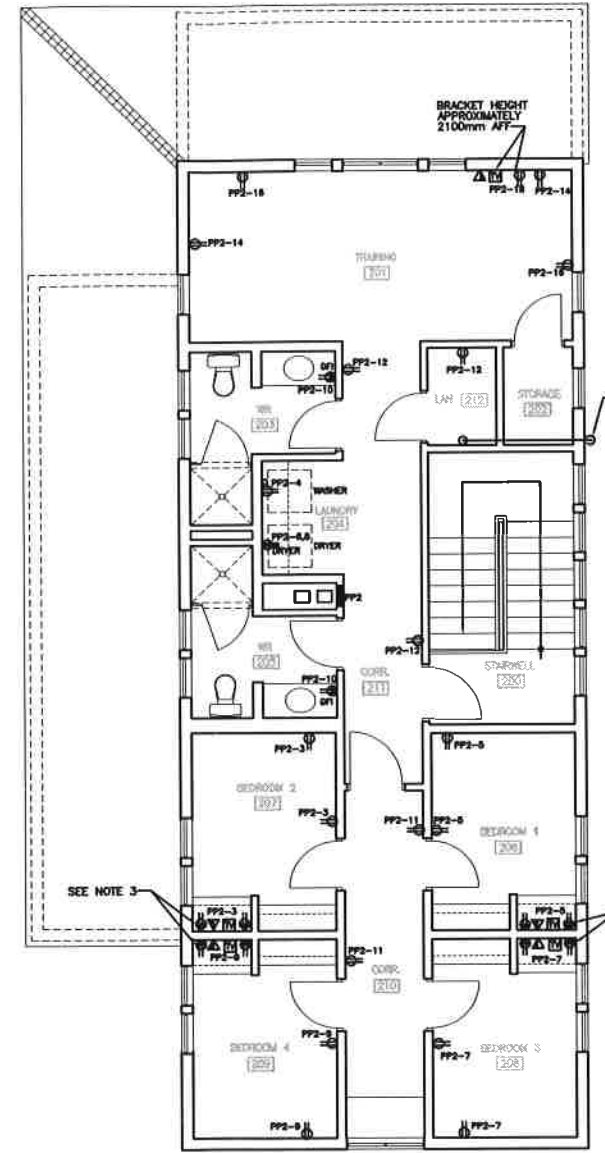
LIGHTING FLOOR PLANS

Designed by: D. BOWSER	Checked by:
Date: FEB. 2007	Drawn by:
Drawn by: R.L. SMELTZER	Approved by:
Date: FEB. 2007	Project number:
Project number: 303436	Sheet number:
Sheet number: E-2	



FIRST FLOOR PLAN

SCALE: 1:50



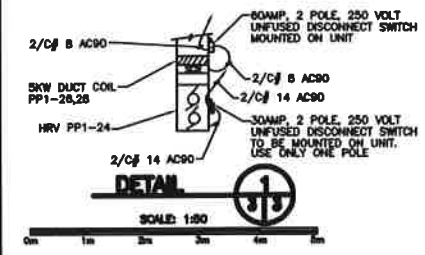
SECOND FLOOR PLAN

SCALE: 1:50

LEGEND

- 15A 120V, DUPLEX U-GROUND RECEPTACLE MOUNTED 150mm ABOVE COUNTER TOP
- 120V, 15A WEATHERPROOF RECEPTACLE
- 120V, 15A DUPLEX RECEPTACLE
- 240V, 30A DRYER RECEPTACLE
- 240V, 50A DRYER RECEPTACLE
- 120V, 15A GROUND FAULT INTERRUPT RECEPTACLE
- 120V, 15A SPLIT RECEPTACLE
- ▽ VOICE OUTLET
- ▽ COMBINATION OF VOICE AND DATA OUTLET 400mm AFF.
- TV OUTLET c/w COAX CABLE TO BE TERMINATED IN LAN ROOM (TV CABLE EQUIPMENT)
- DEDICATED
- FS SURFACE MOUNTED CAST DEVICE BOX
- MS MANUAL MOTOR STARTER c/w THERMAL OVERLOAD PROTECTION AND RED PILOT LIGHTS

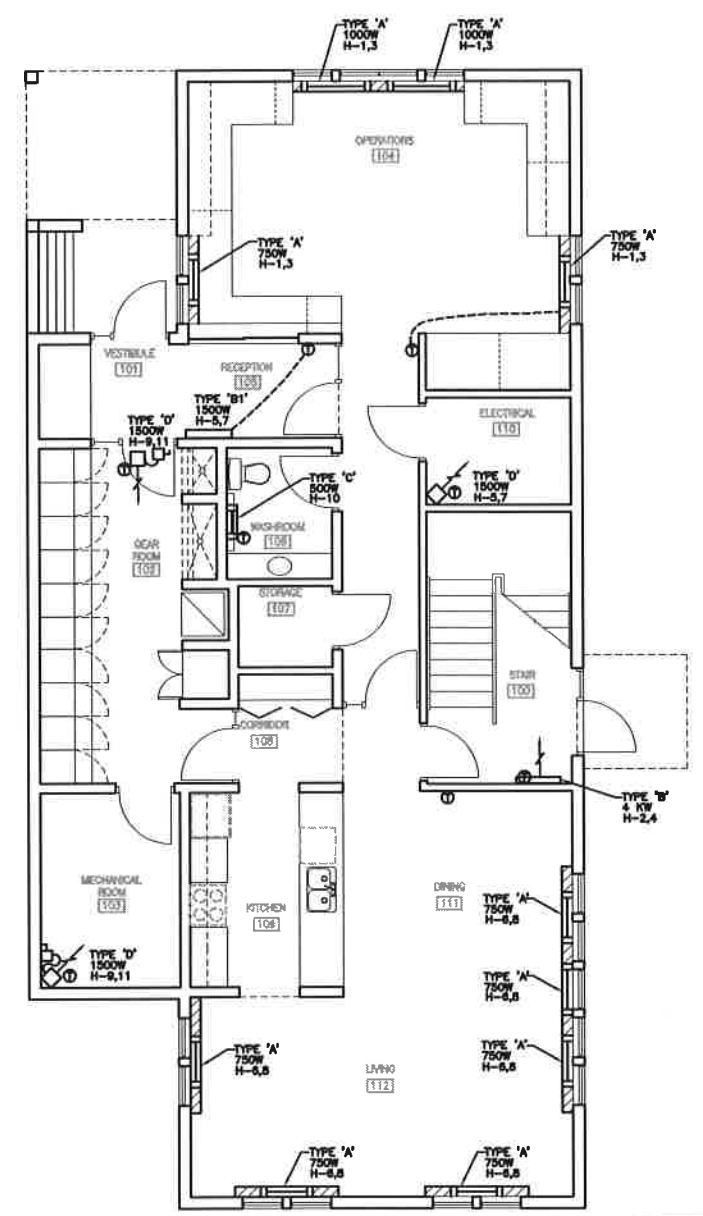
1. ALL RECEPTACLES IN EACH BEDROOM ARE TO BE FED BY ARC FAULT CIRCUIT INTERRUPTER CIRCUIT BREAKERS.
2. ALL EXTERIOR WEATHERPROOF, GFI RECEPTACLE TO BE MOUNTED 1000mm ABOVE FINISHED GRADE.
3. ALL RECEPTACLES, TV OUTLETS AND VOICE/DATA JACKS TO BE MOUNTED ABOVE DESK TOP. CONFIRM WITH ARCHITECTURAL DRAWINGS.
4. SUPPLY AND INSTALL, TO TELEPHONE/TV SERVICE PROVIDER REQUIREMENTS THE FOLLOWING:
 -1-85mm (2") RIGID PVC CONDUIT AND WEATHERHEAD.
 -WEATHERHEAD TO BE AT THE SECOND FLOOR CEILING ELEVATION.
 -TURN DOWN CONDUIT IN LAN ROOM.



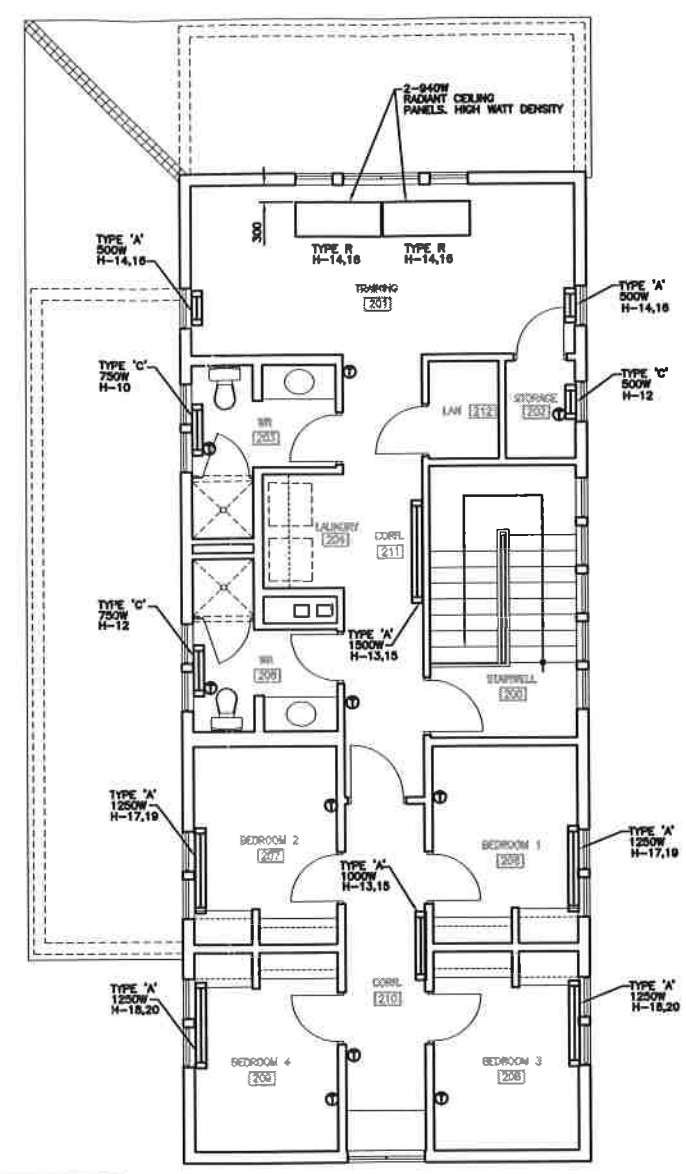
DETAIL

SCALE: 1:50

revision	date
A	A
C	B/C
project COG STATION SHIPPAN PORE de la CCG de SHIPPAN SHIPPAN COME de GLENNIE COURT, N.R.	
drawing POWER & COMMUNICATIONS FLOOR PLANS	
designed G. BOWSER	checked FEB. 2007
drawn R.L. SMELTZER	approved FEB. 2007
title 303436	
drawing no. E-3	



FIRST FLOOR PLAN
SCALE 1:80



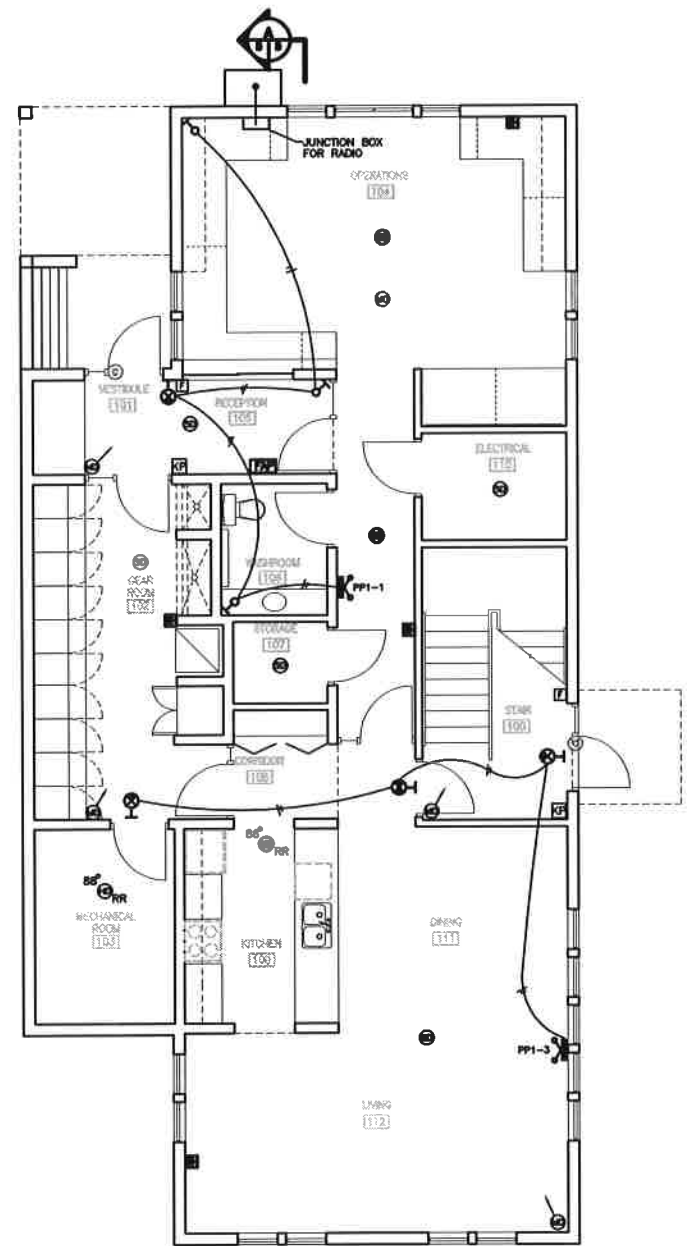
SECOND FLOOR PLAN
SCALE 1:80

ROOM NAME	#	HEATER TYPE	TOTAL WATTAGE
STAIR	100	TYPE 'B'	4KW @ 208V
VESTIBULE	101	---	---
GEAR ROOM	102	TYPE 'D'	1800W @ 208V
MECH. ROOM	103	TYPE 'D'	1800W @ 208V
OPERATIONS	104	TYPE 'A'	3500W @ 208V
RECEPTION	106	TYPE 'B1'	1800W @ 208V
WASHROOM	106	TYPE 'C'	800W @ 120V
STORAGE	107	---	---
CORRIDOR	108	---	---
KITCHEN	108	---	---
ELECT. ROOM	110	TYPE 'D'	1800W @ 208V
DINING ROOM	111	TYPE 'A'	2250W @ 208V
LIVING ROOM	112	TYPE 'A'	2250W @ 208V
STAIRWELL	200	---	---
TRAINING	201	TYPE 'A' & TYPE 'R'	2800W @ 208V
STORAGE	202	TYPE 'C'	800W @ 120V
WASHROOM	203	TYPE 'C'	750W @ 120V
LAUNDRY	204	---	---
WASHROOM	206	TYPE 'C'	750W @ 120V
BEDROOM 1	206	TYPE 'A'	1250W @ 208V
BEDROOM 2	207	TYPE 'A'	1250W @ 208V
BEDROOM 3	208	TYPE 'A'	1250W @ 208V
BEDROOM 4	208	TYPE 'A'	1250W @ 208V
CORRIDOR	210	TYPE 'A'	1000W @ 208V
CORRIDOR	211	TYPE 'A'	1800W @ 208V

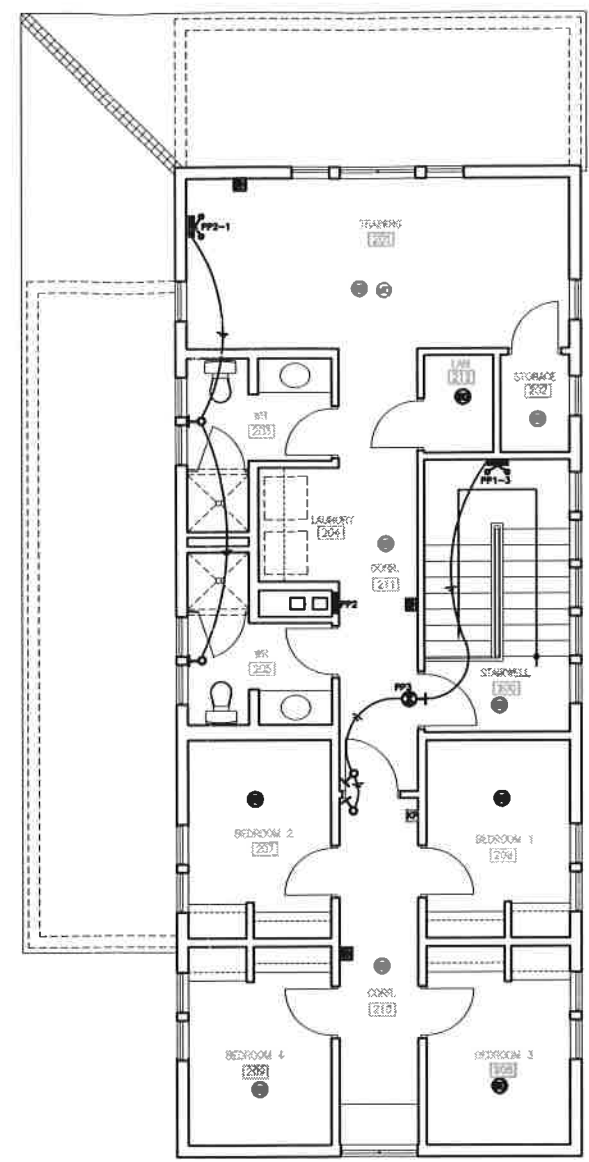
- NOTES:**
1. MOUNTING ARRANGEMENT AND REQUIRED CLEARANCES OF TYPE 'R' HEATERS IN THE TRAINING RM #201 ARE TO BE CONFIRMED BY MANUFACTURER PRIOR TO INSTALLATION.
 2. TYPE 'R' RADIANT PANEL SHOWN ARE A CUSTOM ORDER ITEM. CONTRACTOR TO CONFIRM REQUIREMENTS WITH MANUFACTURER.
 3. ALL HEATING, BRANCH CIRCUIT WIRING TO USE NMD-90 XLPE HEATEX COPPER CABLING.

- ELECTRIC HEATING LEGEND:**
- 208 VOLT ELECTRIC BASEBOARD HEATER. SLOPE TOP, WALL MOUNTED. TYPE 'A' 750W H-13
 - 208 VOLT FORCED FLOW CABINET HEATER. WALL MOUNTED c/w BUILT-IN THERMOSTAT. WATTAGE AS INDICATED. TYPE 'B'
 - 120 VOLT ELECTRIC BASEBOARD HEATER. SLOPE TOP, WALL MOUNTED. TYPE 'C' BUILT-IN THERMOSTAT. WATTAGE AS INDICATED. TYPE 'C'
 - 208 VOLT FORCED FLOW UNIT HEATER c/w MOUNTING BRACKETS & BUILT IN THERMOSTATS. TYPE 'D'
 - 208 VOLT CEILING MOUNTED RADIANT HEATING PANEL. WATTAGE AS INDICATED c/w MOUNTING BRACKETS AND HARDWARE. TYPE 'R'
 - 208 VOLT ARCHITECTURAL CABINET CONVECTOR HEATER. WALL MOUNTED, WATTAGE AS INDICATED. TYPE 'B1'
 - LINE VOLTAGE, ELECTRONIC PULSED BANDWIDTH, 2 POLE THERMOSTAT. WALL MOUNTED 1500mm AFF.
 - MANUAL MOTOR STARTER, c/w THERMAL OVERLOAD PROTECTION AND RED PILOT LIGHT.
 - BASEBOARD HEAT FILLER SECTIONS

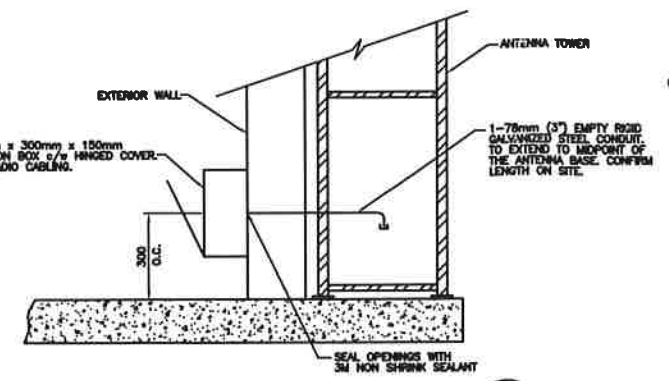
revision	date
A	A 0402 04
C	B 0402 04
B	C 0402 04
C	D 0402 04
<p>project</p> <p>CCS STATION SHIPPAN</p> <p>POUR de la CCS de SHIPPAN</p> <p>SHIPPAN</p> <p>ORIE de GLOUCESTER COUNTY, N.B.</p>	
<p>drawing</p> <p>ELECTRIC HEATING FLOOR PLANS</p>	
designed	G.BOWSER
date	FEB. 2007
drawn	R.L. SMELTZER
date	FEB. 2007
checked	
approved	
scale	
notes	
<p>PROJ. Control Number: Administration de projet 3300</p> <p>project number: 303436</p>	
drawing no.	E-4



FIRST FLOOR PLAN
SCALE: 1:80



SECOND FLOOR PLAN
SCALE: 1:80



SECTION
(RADIO COMMUNICATION JUNCTION BOX INSTALLATION)
SCALE: 1:10



NOTE: CONTRACTOR TO REMOVE ALL KNOCKOUTS ON THE TOP OF THE JUNCTION BOX AND INSERT RUBBER GROMMETS IN EVERY OPENING.

LEGEND

- ⊙ SECURITY DOOR CONTACTOR
- ⊙^{88°C} HEAT DETECTOR-RATE OF RISE - 88°C
- ⊙ MOTION DETECTOR - 360 COVERAGE - CEILING MOUNTED
- ⊙ SMOKE DETECTOR
- ⊙ STROBE HORN
- ⊙ KEYPAD SECURITY
- ⊙ FIRE ALARM PANEL
- ⊙ PULL STATION FOR FIRE ALARM
- ⊙ MOTION DETECTOR - DIRECTIONAL
- ⊙ DOUBLE FACED EXIT SIGN WALL MOUNTED
- ⊙ SINGLE FACED EXIT SIGN WALL MOUNTED
- ⊙ REMOTE SINGLE HEAD EMERGENCY LIGHT
- ⊙ EMERGENCY LIGHT WITH BATTERY PACK

NOTE:

1- REMOTE EMERGENCY LIGHTS AND EXIT SIGNS ARE TO BE CONNECTED TO EMERGENCY BATTERY PACK AS SHOWN (DC CONNECTION)

revision	date
A	Added in. No. of sheet
C	Revised drawing in. No. of sheet in.
B	Change in. No. of sheet in.
C	Change in. No. of sheet in.
<p>project OGG STATION SHEPPARD POSTE de la GOC de SHEPPARD SHEPPARD</p> <p>ORGANISATION COMÉ de GLOUCESTER COUNTY, N.B.</p> <p>drawing FIRE ALARM, SECURITY, EMERGENCY & EXIT LIGHTING FLOOR PLANS</p> <p>designed G. BOWSER</p> <p>date FEB. 2007</p> <p>drawn R.L. SMELTZER</p> <p>date FEB. 2007</p> <p>approved</p> <p>checked</p> <p>verified</p> <p>project control manager Administrateur de projets</p> <p>project number 303438</p> <p>drawing no. E-5</p>	

PANEL "PP1"															
VOLTS 120/208V				PHASE 3				WIRE 4				LOCATION: ELECTRICAL ROOM			
INTERRUPTING 22 K _a MAINS 400 AMPS MOUNTING FLUSH															
FED FROM: SERVICE ENTRANCE MAIN BREAKER															
LOAD DESCRIPTION	A	B	C	KW	WIRE SIZE	CIRCUIT NO.	BREAKER SIZE	A	B	C	LOAD DESCRIPTION				
LIGHTING RMS 101, 102, 104, 105, 106, 107, 110				1.07	14	1	15A				15A 2 14 500 TIME CLOCK & LIGHTING CONTACTOR				
LIGHTING RMS 100, 103, 108, 109, 111, 112, CORRIDOR & 200				1.026	14	3	15A				15A 4 14 455 STATION EXTERIOR LIGHTS				
RECEPTACLES LIVING/DINING RM 112				.6	14	5	15A				15A 6 14 200 DEDICATED RECEPTACLE RM 104				
RECEPTACLES LIVING/DINING RM 112				.6	14	7	15A				15A 8 14 200 DEDICATED RECEPTACLE RM 104				
KITCHEN COUNTER TOP RECEPTACLE-SPLIT				.2	14	9	15A				15A 10 14 200 DEDICATED RECEPTACLE RM 104				
KITCHEN COUNTER TOP RECEPTACLES-SPLIT				.2	14	11	15A				15A 12 14 200 DEDICATED RECEPTACLE RM 104				
KITCHEN COUNTER TOP SPLIT RECEPTACLES				.2	14	13	15A				15A 14 14 200 DEDICATED RECEPTACLE RM 104				
KITCHEN COUNTER TOP SPLIT RECEPTACLES				.2	14	15	15A				15A 16 14 200 DEDICATED RECEPTACLE RM 104				
KITCHEN STOVE/RANGE				6.650	8	17	40A				15A 18 14 200 DEDICATED RECEPTACLE RM 104				
FRIDGE-DEDICATED RECEPTACLE				1.0	14	21	15A				20A 20 12 .8 RECEPTACLES RMS 105, 106, 107 & CORRIDOR				
DISHWASHER-DEDICATED RECEPTACLE				1.0	12	23	20A				20A 22 12 1.4 STATION-EXTERIOR RECEPTACLES				
KITCHEN RANGE HOOD				.2	14	25	15A				15A 24 14 .68 HRV-MECH. RM.				
DOMESTIC HOT WATER HEATER #1				6.760	6	29	2P				30A 26 8 5.0 SKW DUCT COIL				
FIRE ALARM CONTROL PANEL				.35		31	15A				2P 27 28 15A 30 14 .1 DHW RECIRC. PUMP C-1				
SPARE						33	15A				20A 32 12 500 SECURITY SYSTEM				
PANEL W				30.88	3/0	37	200A 3P				200A 34 3/0 34.337 PANEL PP4				
PANEL PP2				12.662	3	41	100A 3P				15A 36 3/0 34.337 PANEL PP4				
						43					15A 40 - SPARE				
						45					15A 42 - SPARE				
						47					15A 44 - SPARE				
						49					15A 46 - SPARE				
						51					48				
						53					50				
						55					52				
						57					54				
						59					56				
											58				
											60				
PHASE "A" 36.41KW 303.41AMPS @ 120V															
PHASE "B" 36.41KW 304.42AMPS @ 120V															
PHASE "C" 35.85KW 298.75AMP @ 120V															
TOTAL LOAD 108.79 KW 301.97 AMPS 301.97 @ 208 VOLTS 3# FEEDER															

* THIS BREAKER IS TO BE PRINTED IN RED

PANEL "H"															
VOLTS 120/208V				PHASE 3				WIRE 4				LOCATION: ELECTRICAL ROOM			
INTERRUPTING 22 K _a MAINS 225 AMPS MOUNTING SURFACE															
FED FROM: PP1															
LOAD DESCRIPTION	A	B	C	KW	WIRE SIZE	CIRCUIT NO.	BREAKER SIZE	A	B	C	LOAD DESCRIPTION				
ELECTRIC HEAT OPERATIONS RM #104				3.5	10	1	30A 2P				30A 2 10 4.0 STAIR RM #100 FORCED FLOW CABINET HEATER				
ELECTRIC HEAT RM #110 & RM #105				3.0	12	5	20A 2P				30A 5 10 4.5 ELECT. HEAT DINING RM #111 & LIVING RM #112				
ELECTRIC HEAT RM #102 & RM #103				3.0	12	9	20A 2P				15A 10 14 1.25 ELECT. HEAT-RMS 106 & 203				
ELECTRIC HEAT CORRIDORS 210 & 211				2.5	12	13	20A 2P				15A 12 14 1.25 ELECT. HEAT-RMS 202 & 205				
ELECTRIC HEAT-BEDROOMS 1 & 2 RM #'S 206 & 207				2.5	12	17	20A 2P				20A 14 12 2.88 ELECTRIC HEAT TRAINING RM #201				
SPARE						21	15A				20A 16 12 2.5 ELECTRIC HEAT-BEDROOMS 3 & 4-RM #'S 208 & 209				
SPARE						23	15A				22				
						25					24				
						27					26				
						29					28				
											30				
PHASE "A" 12890 WATTS 105.75 AMPS @ 120V															
PHASE "B" 9190 WATTS 76.58 AMPS @ 120V															
PHASE "C" 8000 WATTS 75 AMPS @ 120V															
TOTAL LOAD 30.880 KW 85.71 AMPS 85.71 @ 208 VOLTS 3# FEEDER															

* NOTE: DRYER MUST BE RATED FOR 208V.

PANEL "PP2"															
VOLTS 120/208V				PHASE 3				WIRE 4				LOCATION: 2nd FLOOR CORRIDOR RM #211			
INTERRUPTING 22 K _a MAINS 100 AMPS MOUNTING FLUSH															
FED FROM: PANEL PP1															
LOAD DESCRIPTION	A	B	C	KW	WIRE SIZE	CIRCUIT NO.	BREAKER SIZE	A	B	C	LOAD DESCRIPTION				
LIGHTING RMS-201, 202, 203, 204, 205, 211, 212				1.004	14	1	15A				15A 2 14 286 LIGHTING RMS-206, 207, 208, 209, 210				
RECEPTACLES BEDROOM 2 RM #207				.8	14	3	15A				15A 4 14 .8 RECEPTACLES CORRIDOR 211 & LAN RM 212				
RECEPTACLES BEDROOM 1 RM #206				.8	14	5	15A				30A 6 10 4.992 CLOTHES DRYER				
RECEPTACLES BEDROOM 3 RM #208				.8	14	7	15A				15A 10 14 .4 CFCI RECEPTACLES RM #203 & 205				
RECEPTACLES BEDROOM 4 RM #209				.8	14	9	15A				20A 12 12 .6 RECEPTACLES CORRIDOR 211 & LAN RM 212				
RECEPTACLES CORRIDOR RM #210				.4	12	11	20A				15A 14 14 .4 RECEPTACLES TRAINING RM #201				
SPARE						13	15A				15A 16 14 .4 RECEPTACLES TRAINING RM #201				
SPARE						15	15A				15A 18 14 .2 TV RECEPTACLES & TRAINING RM #201				
SPARE						17	15A				20				
						19					22				
						21					24				
						23					26				
						25					28				
						27					30				
						29									
PHASE "A" 4988 WATTS 41.55 AMPS @ 120V															
PHASE "B" 3200 WATTS 26.67 AMPS @ 120V															
PHASE "C" 4495 WATTS 37.47 AMPS @ 120V															
TOTAL LOAD 12.682 KW 35.2 AMPS 35.2 @ 208 VOLTS 3# FEEDER															

PANEL "PP4"															
VOLTS 120/208V				PHASE 3				WIRE 4				LOCATION: WORKSHOP			
INTERRUPTING 22 K _a MAINS 225 AMPS MOUNTING SURFACE															
FED FROM: PANEL PP1															
LOAD DESCRIPTION	A	B	C	KW	WIRE SIZE	CIRCUIT NO.	BREAKER SIZE	A	B	C	LOAD DESCRIPTION				
LIGHTS, EMERGENCY LIGHTS & EXIT SIGNS				1.2	14	1	15A				15A 2 14 1.5 UNIT HEATER STORAGE RM, #F103				
EXTERIOR BUILDING LIGHTS				.315	14	3	15A				15A 4 14 1.5 UNIT HEATER #1 WORKSHOP RM #F102				
RECEPTACLE - STORAGE RM.				.4	14	5	15A				15A 6 14 1.5 UNIT HEATER #2 WORKSHOP RM #F102				
EXTERIOR RECEPTACLES				.4	14	7	15A				15A 8 14 2.25 UNIT HEATER #1 BAY				
RECEPTACLES - BAY				.4	14	9	15A				15A 10 14 2.25 UNIT HEATER #2 BAY				
WORKBENCH RECEPTACLES				.2	12	11	20A				15A 12 14 2.25 UNIT HEATER #3 BAY				
WORKBENCH RECEPTACLES				.2	12	13	20A				15A 14 14 2.25 UNIT HEATER #4 BAY				
WORKBENCH RECEPTACLES				.2	12	15	20A				15A 16 14 2.25 UNIT HEATER #1 BAY				
WORKBENCH RECEPTACLES				.2	12	17	20A				15A 18 14 2.25 UNIT HEATER #2 BAY				
CO. MONITOR				.25	14	19	15A				15A 20 14 1.87 EXHAUST FAN - EF #1				
30A, 240V, 2P EXTERIOR RECEPTACLE				4.992	14	21	30A 2P				20A 32 12 1.92 COMPRESSOR				
50A, 240V, 2P WELDING RECEPTACLE				8.320	6	25	50A 2P				34				
DOMESTIC HOT WATER HEATER				2.25	14	29	15A 2P				36				
EXHAUST FAN - EF #2				.08	14	33	15A				38				
						35					40				
						37									
						39									
						41									
PHASE "A" 14.13KW @ 120V = 117.75 AMPS															
PHASE "B" 13.201KW @ 120V = 110.00 AMPS															
PHASE "C" 8.926KW @ 120V = 74.38 AMPS															
TOTAL LOAD 36.257 KW 100.64 AMPS 100.64 @ 208 VOLTS 3# FEEDER															

EQUIPMENT SCHEDULE																		
ITEM NO.	DESCRIPTION	LOCATION AND USE	SUPPLIED BY.	H.P.	K.W.	VOLTS	F.L.A.	DISC SW.		STARTER		CONTROL		PANEL	No. WIRES	WIRE SIZE	COND. SIZE	REMARKS
								SUPPLIED	WIRE BY	SUPPLIED	WIRE BY	TYPE	TYPE					
1	EXHAUST FAN #1	WORKSHOP EXHAUST	MECH.	FRAC.	1.87	120V	1.8	-	-	-	-	-	-	PP4 30	2	14	-	INTERLOCKED WITH CO. MONITOR MOTORIZED DAMPER
2	EXHAUST FAN #2	WORKSHOP EXHAUST	MECH.	FRAC.	.08	120V	1.8	-	-	-	-	-	-	PP4 33	2	14	-	INTERLOCKED WITH MOTORIZED DAMPER
3	EF #3	KITCHEN RANGE HOOD	ARCH.	-	-	120V	1.8	-	-	-	-	-	-	PP1 25	2	14	-	
4	HRV #1-HEAT RECOVERY VENTILATOR	MECH. ROOM	MECH.	FRAC.	2.0	120V	1.34	-	2	E	M	M	-	PP1 24	2	14	-	
5	DUCT COIL	MECH. ROOM	MECH.	-	5	208V	-	-	2	E	E	M	-	PP1 26,28	3	8	-	
6	DOMESTIC HOT WATER HEATER DHW #1	MECH. ROOM	MECH.	2	3.38	208V	1.8	-	2	E	E	-	-	PP1 27,29	3	6	-	
7	DHW RECIRC. PUMP C1	MECH. ROOM	MECH.	FRAC.	-	120V	1.8	-	-	E	E	E	MANN	PP1 30	2	14	-	
8	DOMESTIC HOT WATER HEATER DHW #2	WORKSHOP	MECH.	2.25	208V	1.8	-	-	2	E	E	-	-	PP4 29,31	2	14	-	
9																		
10																		

revision: _____ date: _____

project: CCG STATION SHIPPAGAN
POSTE de la GCC de SHIPPAGAN SHIPPAGAN

COMTE de GLOUCESTER COUNTY, N.B.

drawing: _____

PANEL SCHEDULES,
MECHANICAL EQUIPMENT SCHEDULE

designated: G.BOWSER
date: FEB. 2007
drawn: R.L. SMELTZER
date: FEB. 2007

approved: _____
date: _____
Tender: _____
Project Manager: Administrateur de projets TPSGC
project number: 303436
drawing no: E-7