

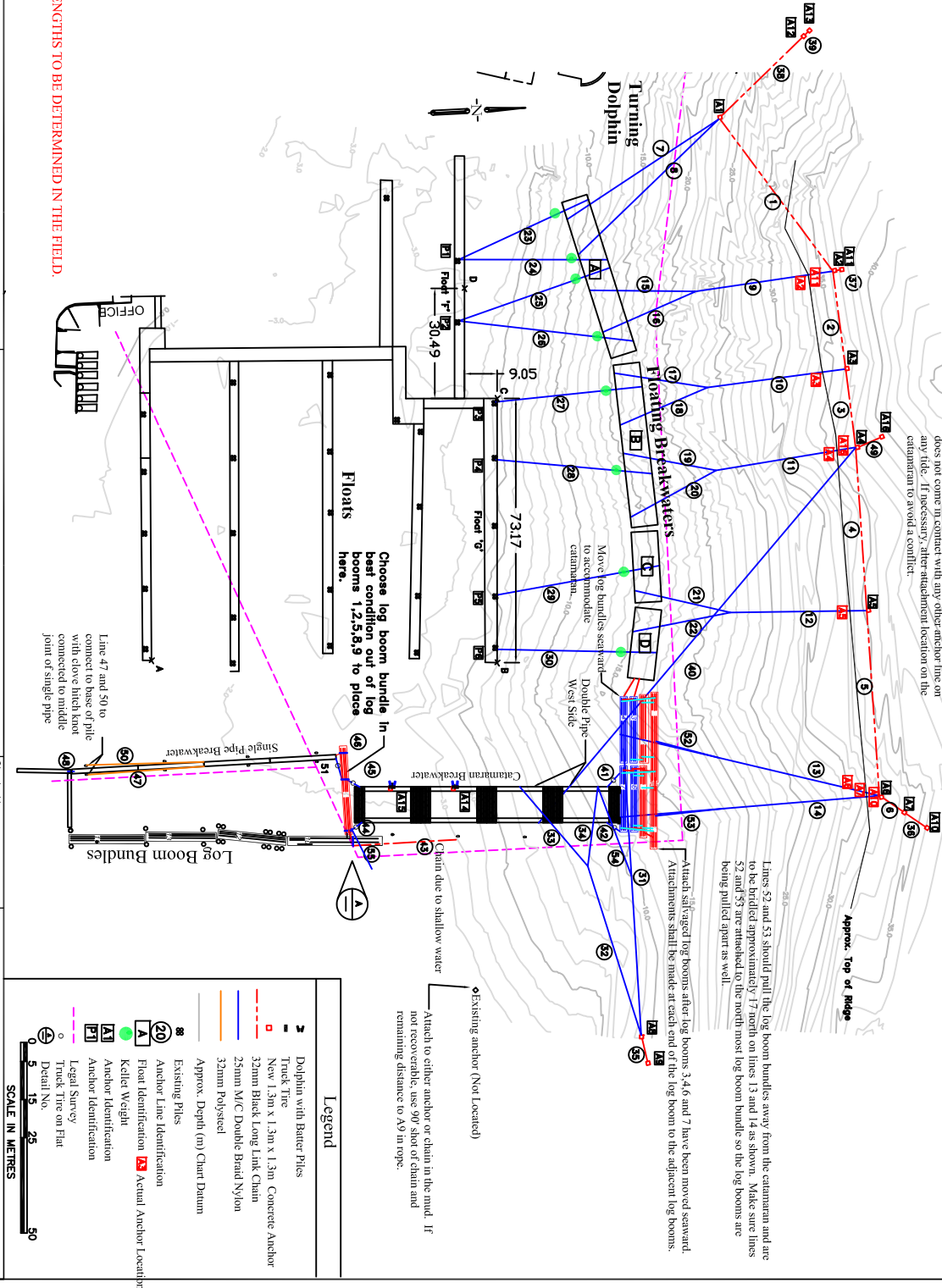
Table 1. Estimated Line Lengths in Meters

Line #	Line Type	Length of Working	Attachment Components	Total
1	32mm Long Link Chain	254.2	0	254.2
2	32mm Long Link Chain	274	0	274
3	32mm Long Link Chain	221	0	221
4	32mm Long Link Chain	46.4	0	46.4
5	32mm Long Link Chain	51.5	0	51.5
6	32mm Long Link Chain	81.1	0	81.1
7	25mm M/C Double Braid Nylon	54.5	9.4	63.9
8	25mm M/C Double Braid Nylon	59.7	9.4	69.1
9	25mm M/C Double Braid Nylon	43.7	6.1	49.8
10	25mm M/C Double Braid Nylon	44.1	6.1	50.2
11	25mm M/C Double Braid Nylon	43.2	6.1	49.3
12	25mm M/C Double Braid Nylon	42.9	6.1	49.0
13	25mm M/C Double Braid Nylon	88.4	6.1	94.5
14	25mm M/C Double Braid Nylon	81.7	6.1	87.8
15	25mm M/C Double Braid Nylon	31.7	9.4	41.1
16	25mm M/C Double Braid Nylon	28.8	9.4	38.2
17	25mm M/C Double Braid Nylon	30.0	9.4	39.4
18	25mm M/C Double Braid Nylon	30.2	9.4	39.6
19	25mm M/C Double Braid Nylon	30.2	9.4	39.6
20	25mm M/C Double Braid Nylon	31.0	9.4	40.4
21	25mm M/C Double Braid Nylon	31.0	9.4	40.4
22	25mm M/C Double Braid Nylon	31.3	9.4	40.7
23	25mm M/C Double Braid Nylon	29.5	11.3	40.8
24	25mm M/C Double Braid Nylon	41.3	11.3	52.6
25	25mm M/C Double Braid Nylon	44.5	11.3	55.8
26	25mm M/C Double Braid Nylon	49.8	11.3	61.1
27	25mm M/C Double Braid Nylon	40.9	11.3	52.2
28	25mm M/C Double Braid Nylon	43.6	11.3	54.9
29	25mm M/C Double Braid Nylon	46.1	11.3	57.4
30	25mm M/C Double Braid Nylon	44.6	11.3	55.9
31	25mm M/C Double Braid Nylon	6.1	6.1	12.2
32	25mm M/C Double Braid Nylon	6.1	6.1	12.2
33	25mm M/C Double Braid Nylon	6.1	6.1	12.2
34	25mm M/C Double Braid Nylon	6.1	6.1	12.2
35	32mm Long Link Chain	8.1	0	8.1
36	32mm Long Link Chain	8.1	0	8.1
37	32mm Long Link Chain	1.4	0	1.4
38	32mm Long Link Chain	31.86	0	31.86
39	32mm Long Link Chain	1.4	0	1.4
40	25mm M/C Double Braid Nylon	137.0	6.1	143.1
41	25mm M/C Double Braid Nylon	1.2	6.1	7.3
42	25mm M/C Double Braid Nylon	1.2	6.1	7.3
43	Chain	6.1	6.1	12.2
44	Rope or chain	6.1	6.1	12.2
45	Rope or chain	6.1	6.1	12.2
46	Chain	6.1	6.1	12.2
47	32mm Polyester	32.2	6.1	38.3
48	25mm M/C Double Braid Nylon	2.0	6.1	8.1
49	32mm Long Link Chain	8.1	0	8.1
50	32mm Polyester	32.2	6.1	38.3
51	32mm Polyester	6.1	1.5	7.6
52	25mm M/C Double Braid Nylon	6.1	6.1	12.2
53	25mm M/C Double Braid Nylon	6.1	6.1	12.2
54	25mm M/C Double Braid Nylon	6.1	6.1	12.2
55	32mm Polyester	6.1	6.1	12.2

Not an as built.

Contractor to ensure no lines are crossing other lines at any tide.

NOTE: LINE LENGTHS ARE ESTIMATES! ACTUAL LINE LENGTHS TO BE DETERMINED IN THE FIELD.



Line 40 in particular shall be inspected to ensure that it does not come in contact with any other anchor line on any tide. If necessary, after attachment location on the catamaran to avoid a conflict.

Lines 52 and 53 should pull the log boom bundles away from the catamaran and are to be pulled approximately 17m north on lines 13 and 14 as shown. Make sure lines 52 and 53 are attached to the north most log boom bundle so the log booms are being pulled apart as well.

Attach salvaged log booms after log booms 3,4,6 and 7 have been moved seaward. Attachments shall be made at each end of the log boom to the adjacent log booms.

Existing anchor (Not Located)
 Attach to either anchor or chain in the mud. If not recoverable, use 90° shot of chain and remaining distance to A9V in tope.

Legend

- 2 Dolphin with Buter Piles
- Truck Tire
- New 1.3m x 1.3m Concrete Anchor
- 32mm Black Long Link Chain
- 25mm M/C Double Braid Nylon
- 32mm Polyester
- Approx. Depth (m) Chart Datum
- Existing Piles
- Anchor Line Identification
- Float Identification
- Kellee Weight
- Anchor Identification
- Legal Survey
- Truck Tire on Flat
- Detail No.

SCALE IN METERS

Client

Fisheries and Oceans
Pêches et Océans

Small Craft
Harbours Branch

Author

SEA FORCE CONSULTANTS INC.
 1047 Belvedere Drive, North Vancouver, B.C.
 CANADA V7R 2C8 Tel: 604-816-3114

Checked by AC

Drawn by XIE

Date Oct. 18, 2004

Scale As noted

Page

Contract #

PROJECT

ANCHOR SYSTEM LAYOUT FOR THE FLOATING BREAKWATERS LOCATED AT BELLA COOLA, BRITISH COLUMBIA

DWG. No. 4044-12-10-04-001D