



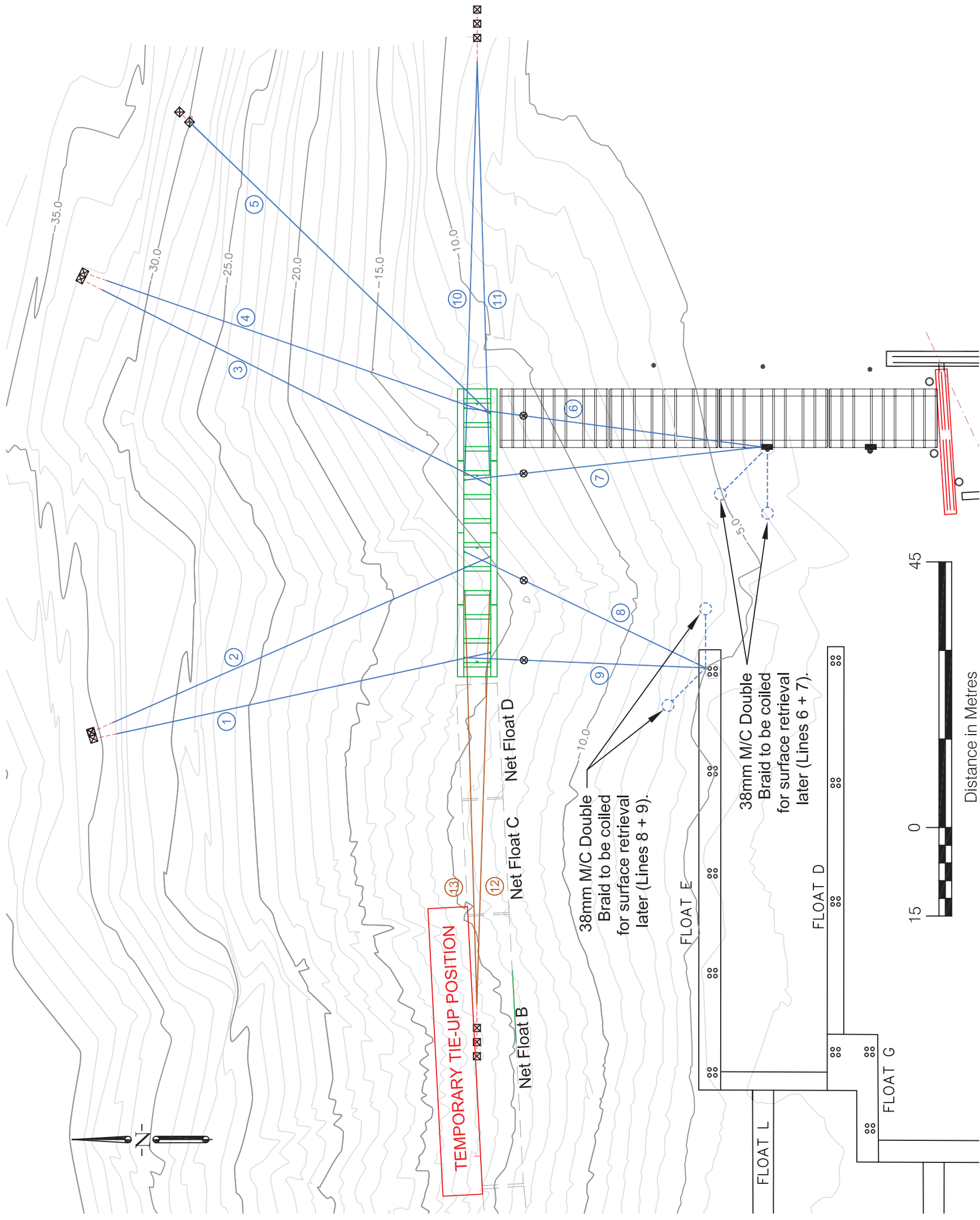
Photo 1: Site Aerial

**LEGEND**

- Major Contour (5.0m)
- Contour (1.0m)
- Existing Floats
- - - Existing Net Floats
- New Steel Catamaran Breakwater
- 32mm M/C Double Braid Nylon
- 38mm M/C Double Braid Nylon
- - - 38mm M/C Double Braid (To reconnect)
- ⑤ Mooring Line Number
- ⊕ New 5 Tonne Concrete Anchor
- ⊗ New 1 Tonne Concrete Kellet Weight

**DRAWING NOTES**

- Elevations are in metres chart datum.
- Existing structures referenced from aerial photos.
- Contours provided by Small Craft Harbours.
- Not all existing anchors necessarily shown.
- Kellet weight and attachment details not shown.
- Mooring lines to existing anchors not shown.
- Final position of existing net floats may change.



Client



Fisheries and Oceans  
Pêches et Océans  
Small Craft Harbours Branch

Author



118 Garden Avenue, North Vancouver, B.C.  
CANADA V7P 3H2 Tel: 604-988-3622

PROJECT

Checked by	DC
Drawn by	DB
Date	June 25, 2010
Scale	1:750
Inspectors	N/A
Paper Size	11 x 17

Anchor Installation Plan for  
New Steel Catamaran Breakwater  
Bella Coola Small Craft Harbour

Ref. No.

REFERENCE

DWG. No.

4123-10-01