

**STANDARD 2.743M WIDE FLOAT MODULE - 2011 REVISION**  
WITH 141x141 CROSSTIE, 141x141 RISERS

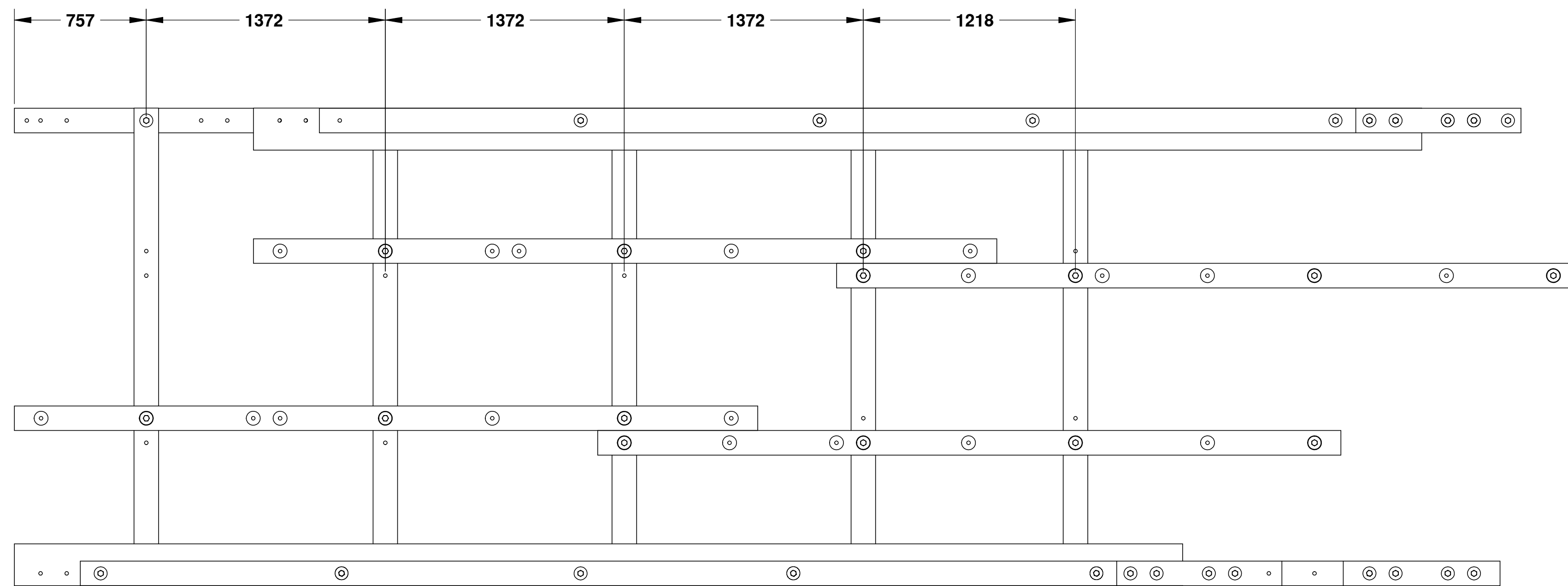
ALL STAMPS LOCATED ON THIS FACE

**TIMBER MEMBERS**


ITEM NO.	QTY.	TIMBER MEMBER	DESCRIPTION	MATERIAL
1	5	CROSS TIES	(6x6) 141 X 141 x 2743 LG	14 LB CREOSOTE TREATMENT #1 BTR FIR
2	2	FLANGE	(6x8) 141 x 191 x 6706 LG	14 LB CREOSOTE TREATMENT #1 BTR FIR
3	2	STRINGER	(6x10) 141 x 241 x 6706 LG	14 LB CREOSOTE TREATMENT #1 BTR FIR
4	4	JOISTS	(6x6) 141 x 141 x 4267 LG	14 LB CREOSOTE TREATMENT #1 BTR FIR
5	6	RISERS	(6x6) 141 x 141 x 300 LG	ACZA
6	2	RAIL	(4x6) 89 x 141 x 5950 LG	ACZA
7	2	LOWER FLANGE SPLICE	(6x6) 141 x 141 x 900 LG	14 LB CREOSOTE TREATMENT #1 BTR FIR
8	2	UPPER FLANGE SPLICE	(6x6) 141 x 141 x 900 LG	14 LB CREOSOTE TREATMENT #1 BTR FIR
13	2	UPPER STRINGER SPLICE	(6x6) 141 x 141 x 1140 LG	ACZA
15	2	LOWER STRINGER SPLICE	(6x6) 141 X 141 x 900 LG	14 LB CREOSOTE TREATMENT #1 BTR FIR
17	5	FOAM BUOYANCY BILLET	1000 X 597 x 2438 LG.	
19	28	DECK PLANKS	(12x2) 305 x 38 x 2440 LG	ACZA

**HARDWARE REQUIREMENTS**

ITEM NO.	QTY.	HARDWARE
9	14	HEX BOLT 19 x 300mm
10	100	WASHERS 19 DIA.
11	50	HEX NUT 19mm DIA.
12	10	HEX BOLT 19 x 508mm
14	16	HEX BOLT 19 x 660mm
16	10	HEX BOLT 19 x 406mm
20	192	100mm GALVANIZED SPIRAL NAILS



**PLAN VIEW**

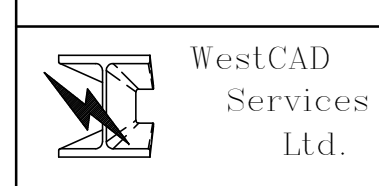
 Fisheries & Oceans / Pêches et Océans  
Small Craft Harbours Branch

TITLE: **'2011 REVISION' 2.743m WIDE STANDARD FLOAT MODULE**

SIZE: **D** DWG. NO.: **FM9-ST-000** REV: **H**  
SCALE: 1:20 WEIGHT: SHEET 1 OF 1

UNLESS OTHERWISE SPECIFIED:		DATE	NAME
DIMENSIONS ARE IN INCHES	DRAWN	12/04	BB
TOLERANCES:	CHECKED		
FRACTIONAL: ±	ENG APPR.		
ANGULAR: MATCH BEND ±	MFG APPR.		
TWO PLACE DECIMAL: ±			
THREE PLACE DECIMAL: ±			
INTERPRET GEOMETRIC TOLERANCING PER:			
MATERIAL:			
FINISH:			
NEXT ASSY:	USED ON:		
APPLICATION:	DO NOT SCALE DRAWING		

PROPRIETARY AND CONFIDENTIAL  
THE INFORMATION CONTAINED IN THIS DRAWING IS THE SOLE PROPERTY OF HER MAJESTY'S GOVERNMENT OF CANADA. ANY REPRODUCTION IN PART OR AS A WHOLE WITHOUT THE WRITTEN PERMISSION OF HER MAJESTY'S GOVERNMENT OF CANADA IS PROHIBITED.



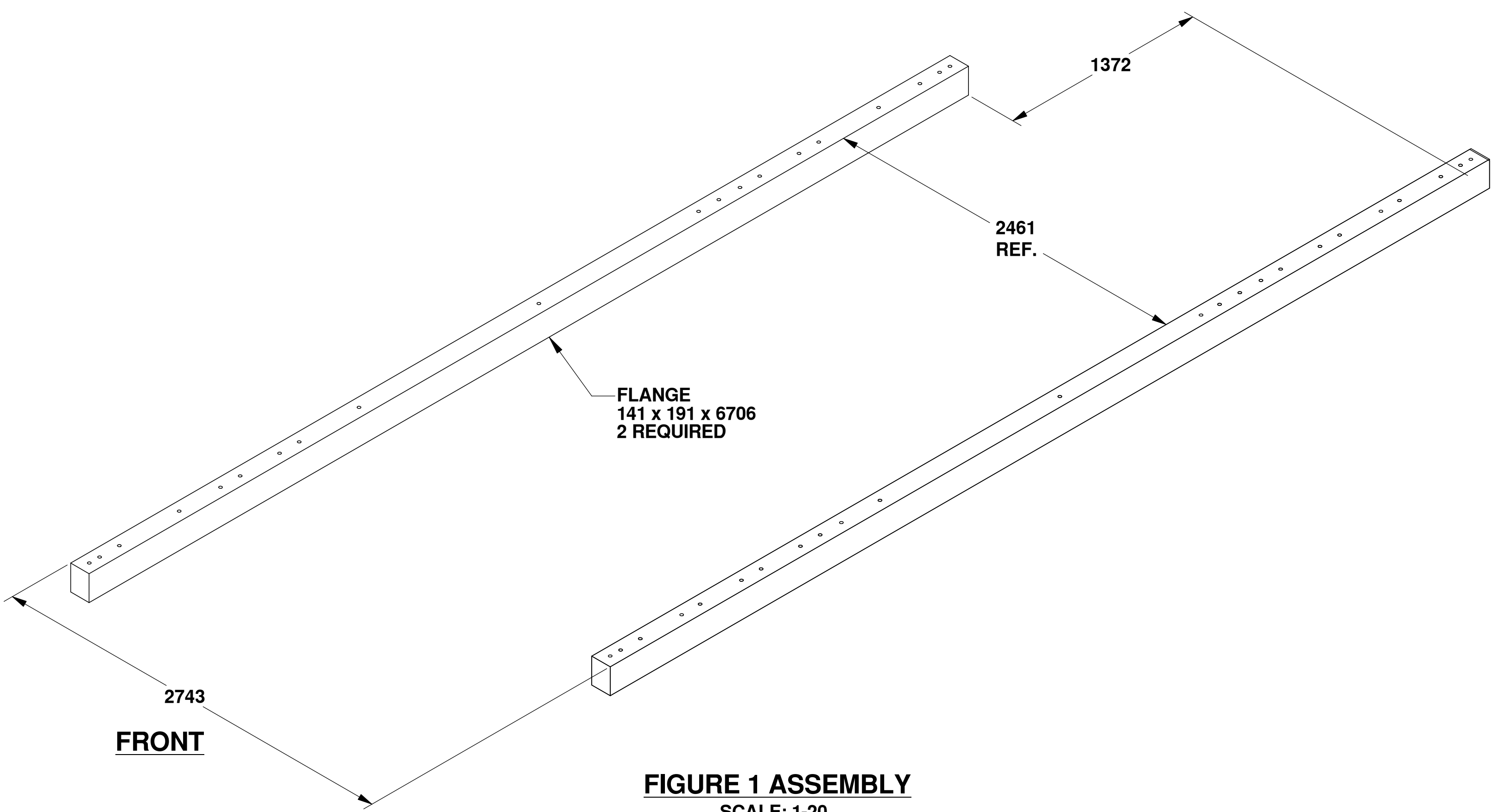




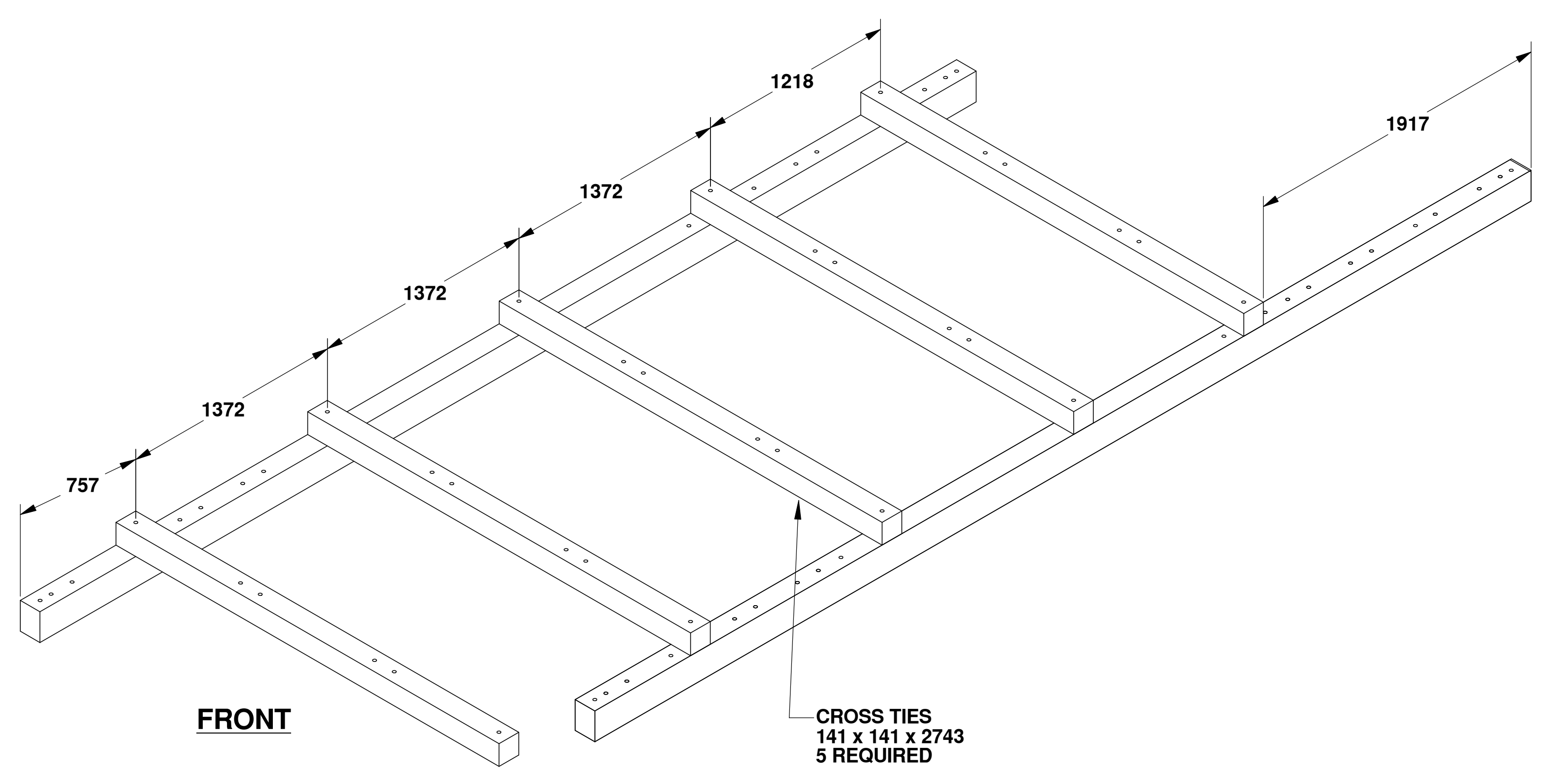
8 7 6 5 4 3 2 1

F E D C B A

2743  
**FRONT**

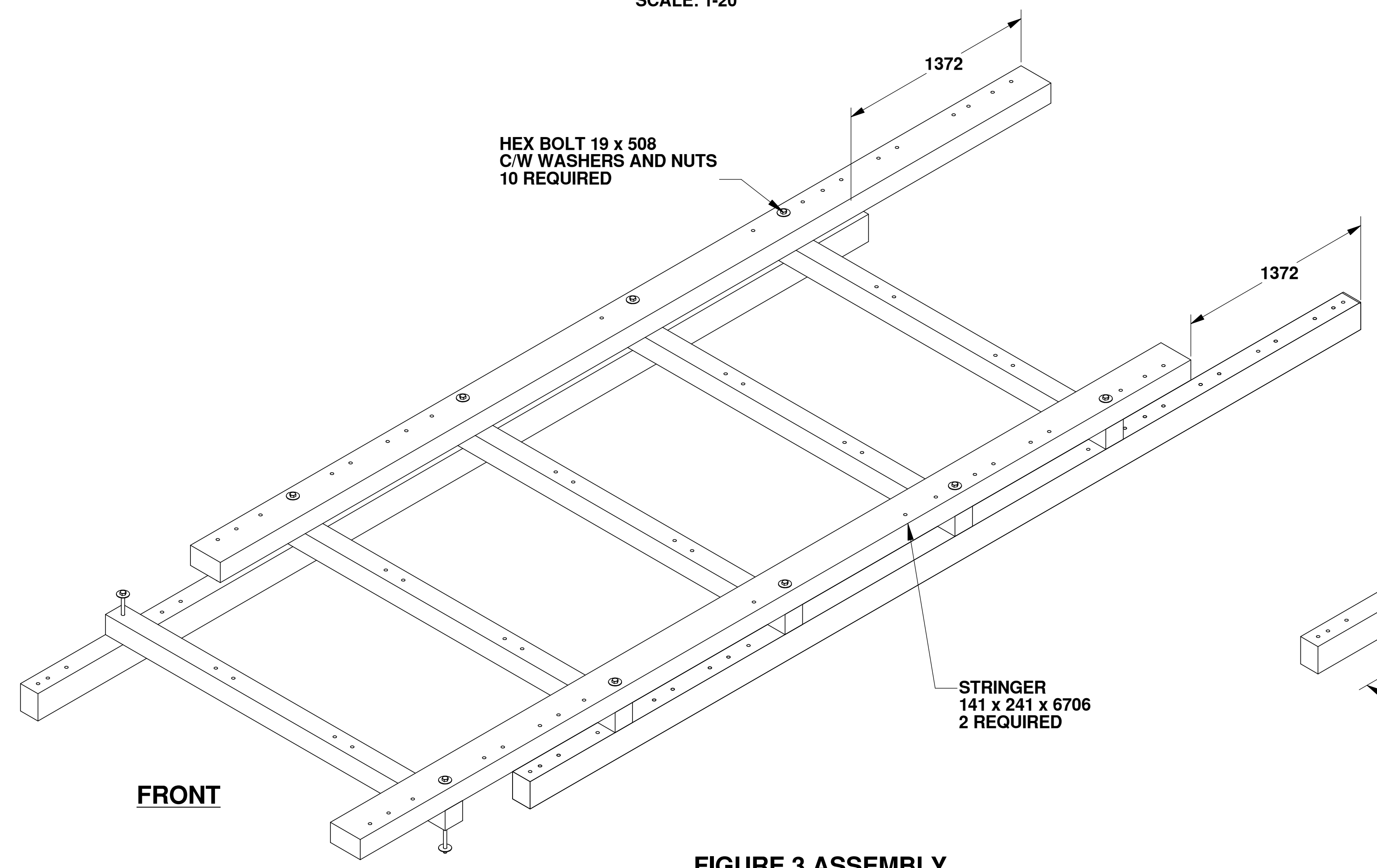


**FIGURE 1 ASSEMBLY**  
SCALE: 1-20



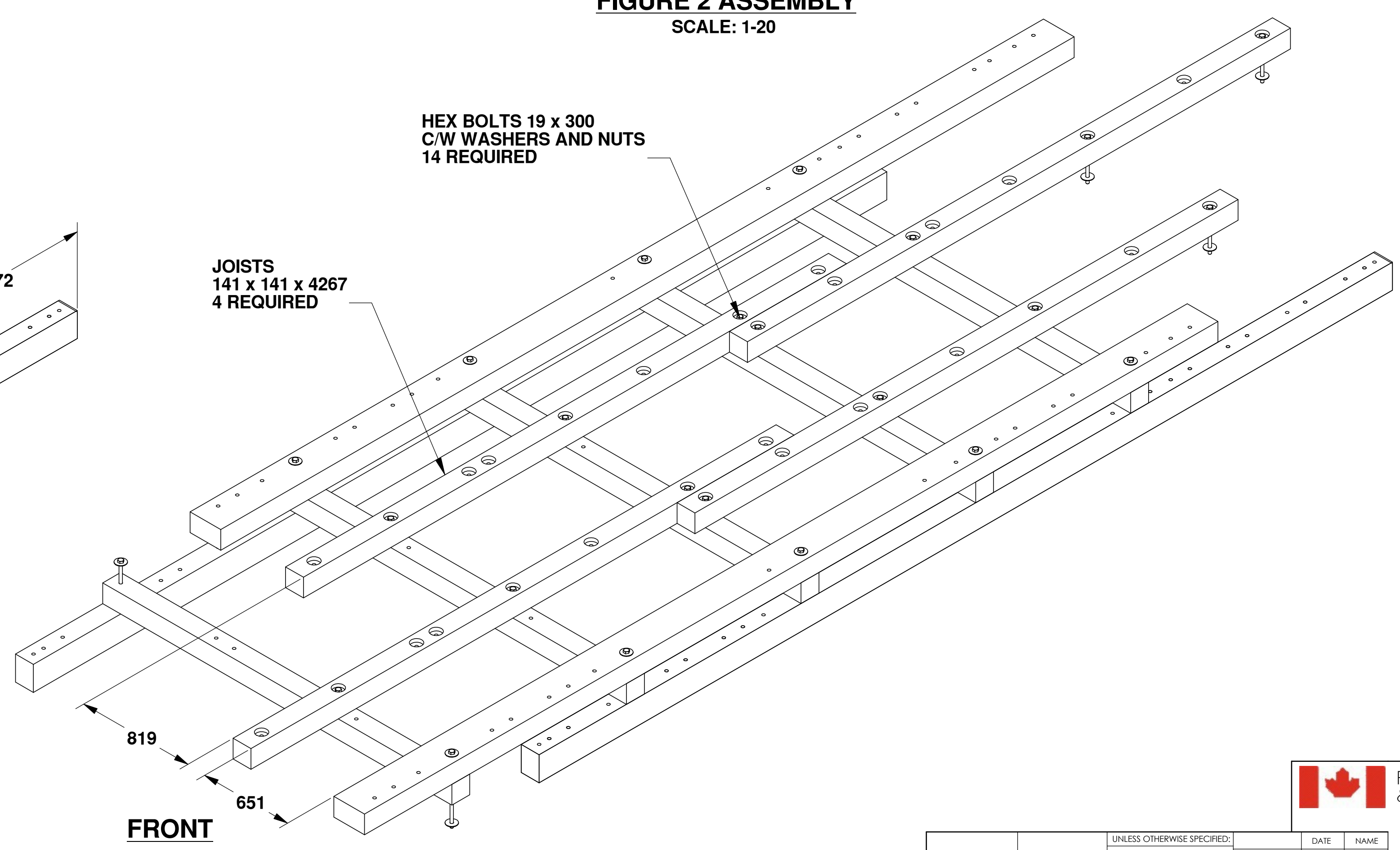
**FRONT**

**FIGURE 2 ASSEMBLY**  
SCALE: 1-20



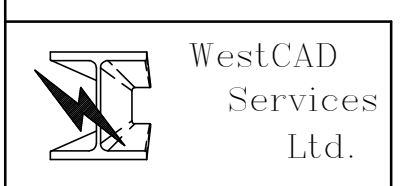
**FRONT**

**FIGURE 3 ASSEMBLY**  
SCALE: 1-20



**FRONT**

**FIGURE 4 ASSEMBLY**  
SCALE: 1-20



**PROPRIETARY AND CONFIDENTIAL**  
THE INFORMATION CONTAINED IN THIS DRAWING IS THE SOLE PROPERTY OF HER MAJESTY'S GOVERNMENT OF CANADA. ANY REPRODUCTION IN PART OR AS A WHOLE WITHOUT THE WRITTEN PERMISSION OF HER MAJESTY'S GOVERNMENT OF CANADA IS PROHIBITED.

UNLESS OTHERWISE SPECIFIED:		DATE	NAME
DIMENSIONS ARE IN INCHES		12/04	BB
TOLERANCES:			
FRACTIONAL ±			
ANGULAR: MACH ±			
TWO PLACE DECIMAL ±			
THREE PLACE DECIMAL ±			
INTERPRET GEOMETRIC TOLERANCING PER:			
MATERIAL			
NEXT ASSY		USED ON	FINISH
APPLICATION		DO NOT SCALE DRAWING	

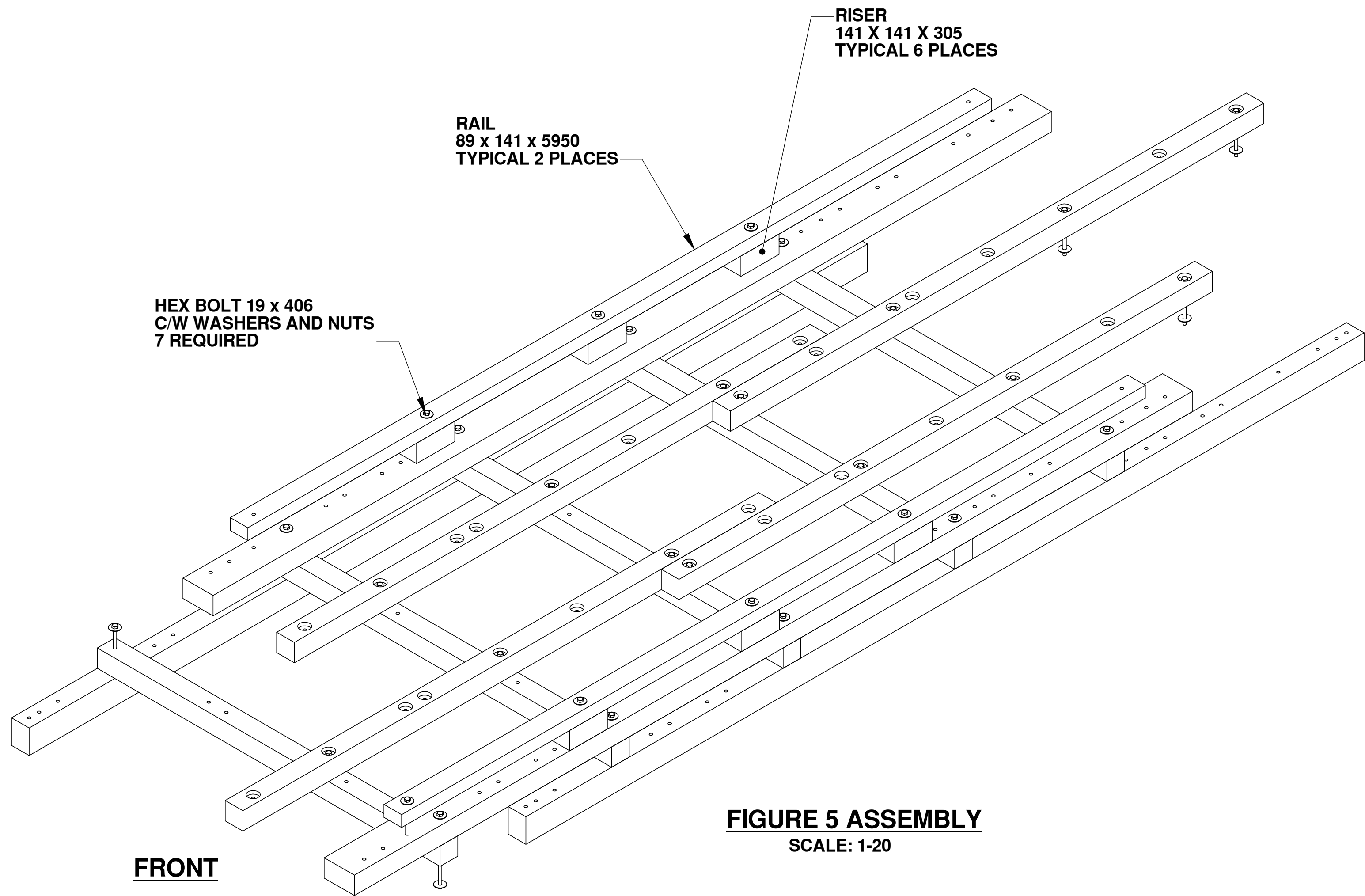
Fisheries & Oceans / Pêches et Océans  
Small Craft Harbours Branch

**TITLE: '2005 REVISION' 2.743m WIDE STANDARD FLOAT MODULE ASSEMBLY**

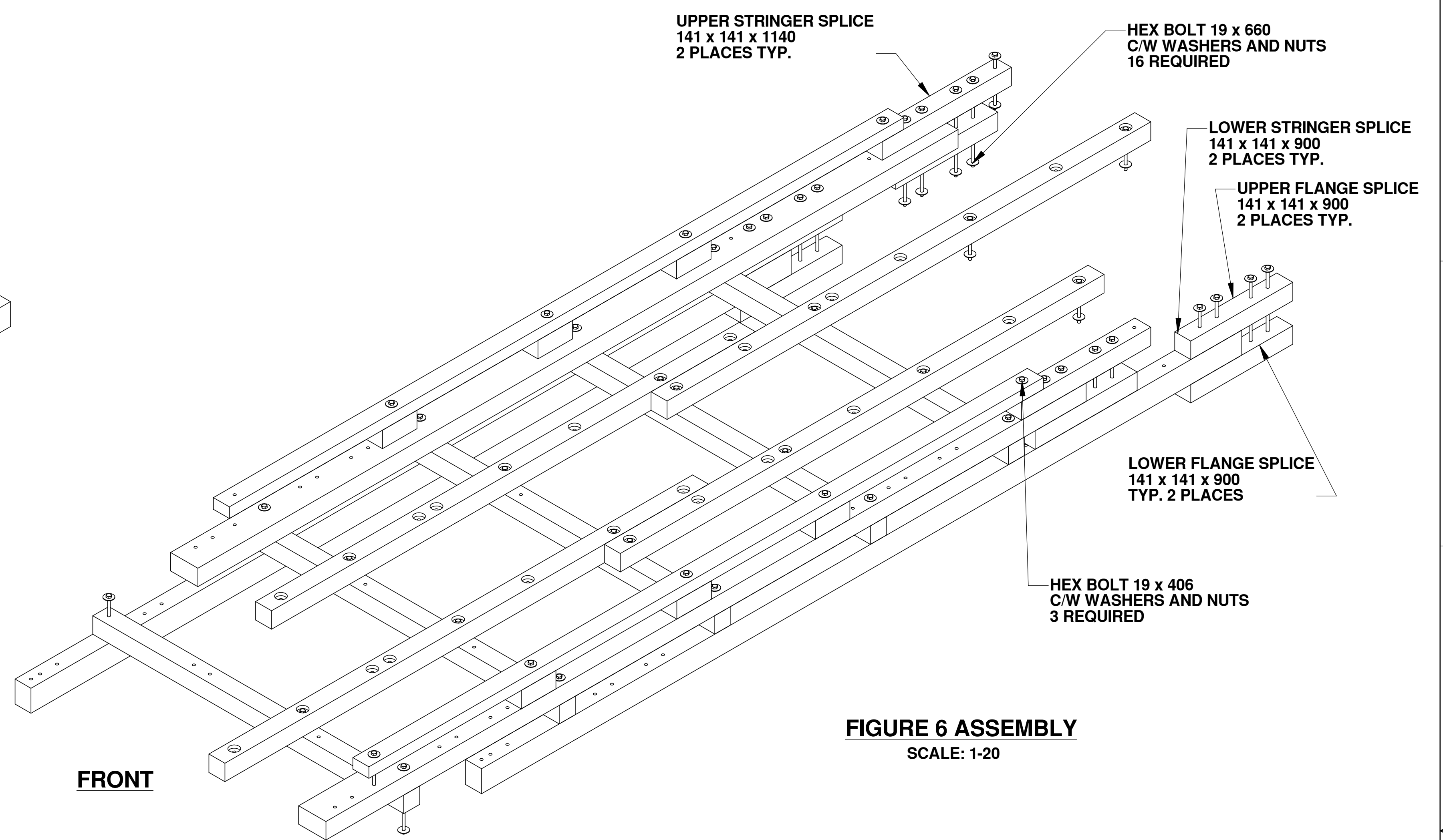
SIZE	DWG. NO.	REV
D	FM9-ST-002	E

SCALE: 1:20 | WEIGHT: | SHEET 1 OF 1

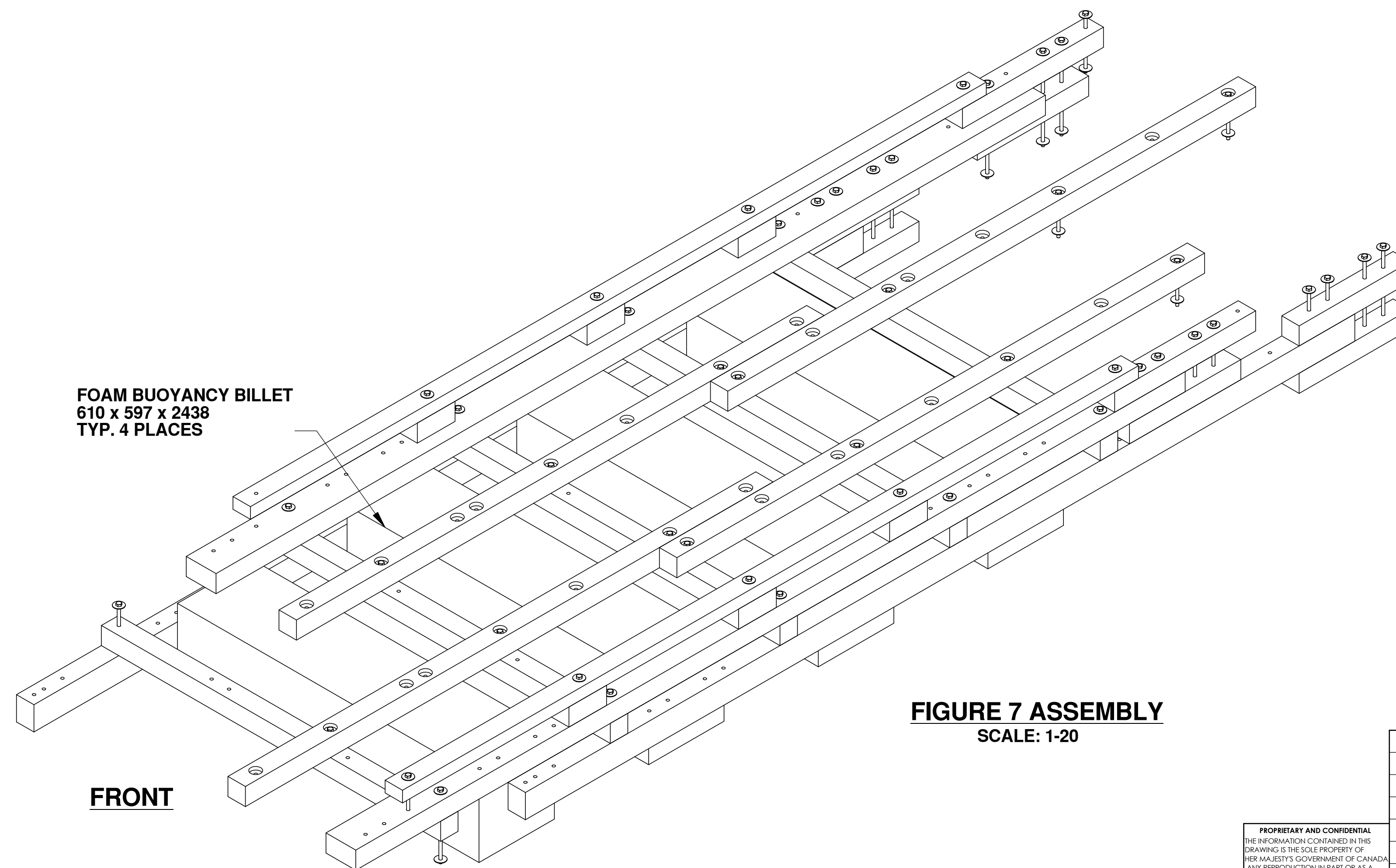




**FIGURE 5 ASSEMBLY**  
SCALE: 1-20



**FIGURE 6 ASSEMBLY**  
SCALE: 1-20



**FIGURE 7 ASSEMBLY**  
SCALE: 1-20

**PROPRIETARY AND CONFIDENTIAL**  
THE INFORMATION CONTAINED IN THIS DRAWING IS THE SOLE PROPERTY OF HER MAJESTY'S GOVERNMENT OF CANADA. ANY REPRODUCTION IN PART OR AS A WHOLE WITHOUT THE WRITTEN PERMISSION OF HER MAJESTY'S GOVERNMENT OF CANADA IS PROHIBITED.

UNLESS OTHERWISE SPECIFIED:		DATE	NAME
DIMENSIONS ARE IN INCHES		12/04	BB
TOLERANCES:			
FRACTIONAL ±	CHECKED		
ANGULAR: MACH ±	ENG APPR.		
TWO PLACE DECIMAL ±	MFG APPR.		
THREE PLACE DECIMAL ±	G.A.		
INTERPRET GEOMETRIC TOLERANCING PER:	COMMENTS:		
MATERIAL			
FINISH			
APPLICATION			

TITLE: '2005 REVISION' 2.743m WIDE STANDARD FLOAT MODULE ASSEMBLY		
SIZE	DWG. NO.	REV
D	FM9-ST-003	D
SCALE: 1:20	WEIGHT:	SHEET 1 OF 1

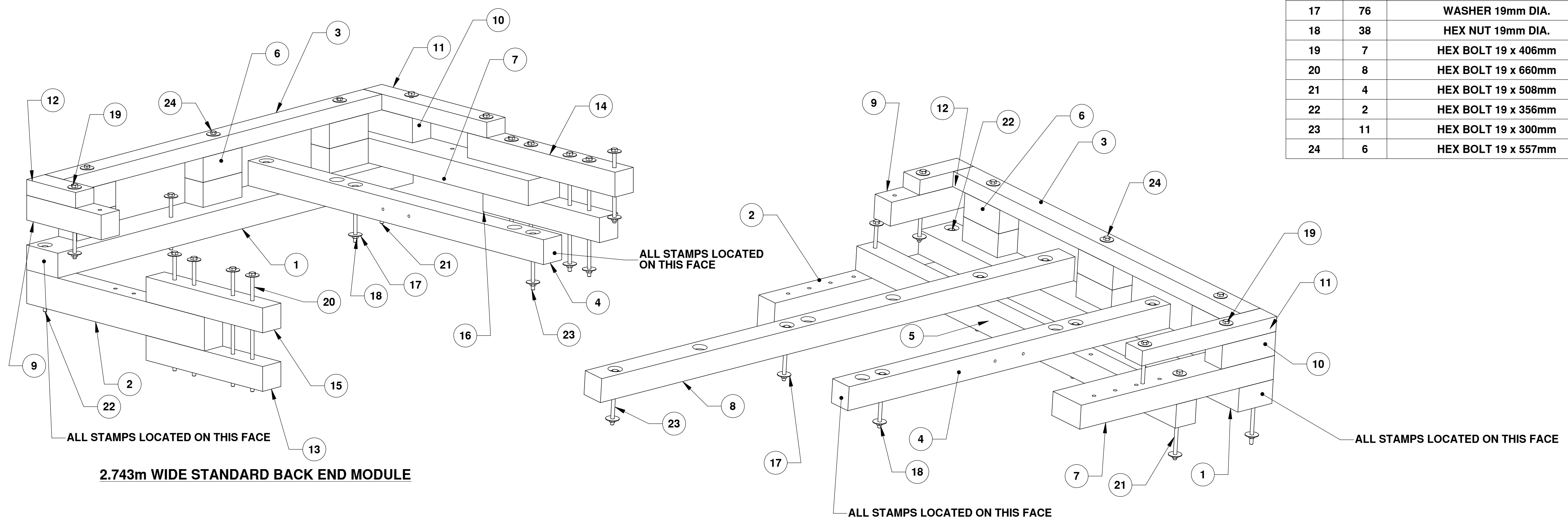
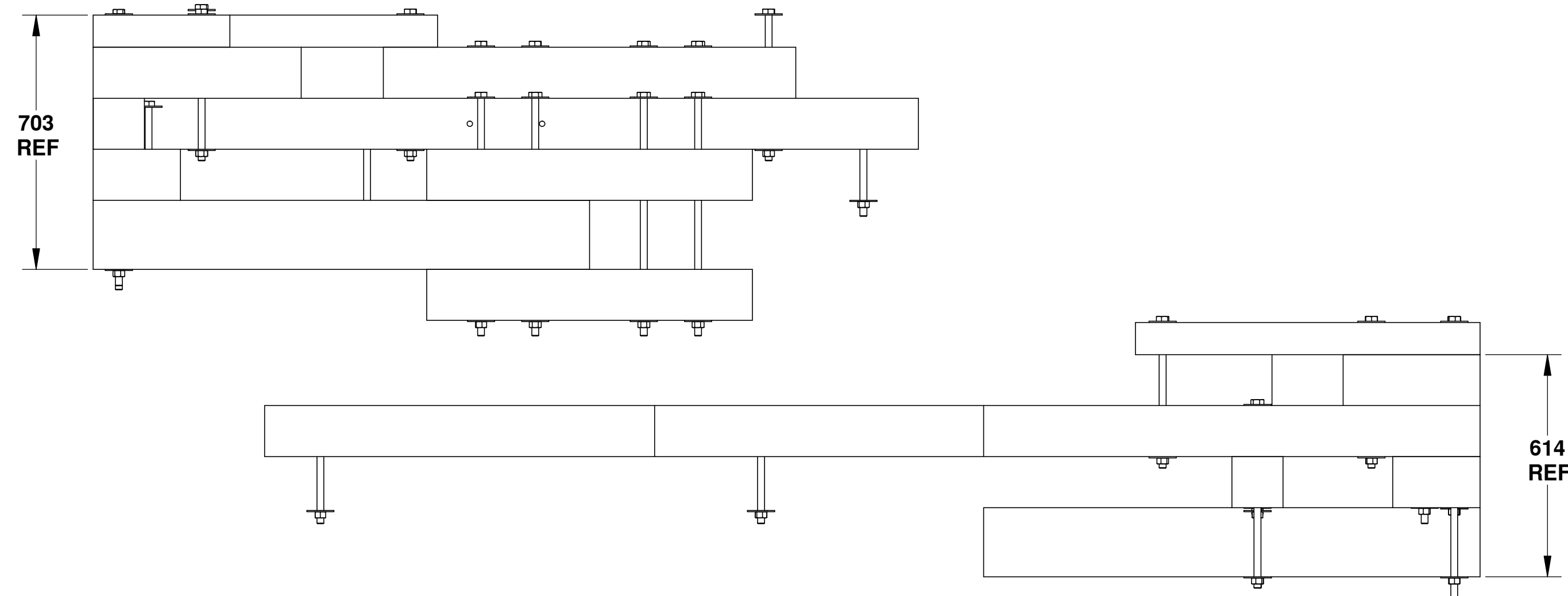


### TIMBER MEMBERS REQUIREMENTS

ITEM NO.	QTY.	TIMBER MEMBER	DESCRIPTION	MATERIAL
1	2	END CROSSTIE	(6x10) 141 x 241 x 2743 LG.	14 LB. CREOSOTE TREATMENT #1 BTR FIR
2	2	FLANGE END	(6x8) 141 x 191 x 1372 LG.	14 LB. CREOSOTE TREATMENT #1 BTR FIR
3	2	END RAIL	(4x6) 89 x 141 x 2460 LG.	ACZA
4	2	JOIST END 'B'	(6x6) 141 x 141 x 2281 LG.	14 LB. CREOSOTE TREATMENT #1 BTR FIR
5	1	STANDARD CROSSTIE	(6x6) 141 x 141 x 2743 LG.	14 LB. CREOSOTE TREATMENT #1 BTR FIR
6	14	END BLOCK	(6x6) 141 x 141 x 300 LG.	ACZA
7	2	STRINGER END	(6x10) 141 x 241 x 1372 LG.	14 LB. CREOSOTE TREATMENT #1 BTR FIR
8	1	MODIFIED JOIST	(6x6) 141 x 141 x 3359 LG.	14 LB. CREOSOTE TREATMENT #1 BTR FIR
9	2	SPACER END 'B'	(6x6) 141 x 141 x 575 LG.	ACZA
10	2	SPACER END	(6x6) 141 x 141 x 378 LG.	ACZA
11	2	RAIL END	(4x6) 89 x 141 x 952 LG.	ACZA
12	2	RAIL END 'B'	(4x6) 89 x 141 x 378 LG.	ACZA
13	1	LOWER FLANGE SPLICE	(6x6) 141 x 141 x 900 LG.	14 LB. CREOSOTE TREATMENT #1 BTR FIR
14	1	UPPER STRINGER SPLICE	(6x6) 141 x 141 x 1140 LG.	ACZA
15	1	UPPER FLANGE SPLICE	(6x6) 141 x 141 x 900 LG.	14 LB. CREOSOTE TREATMENT #1 BTR FIR
16	1	LOWER STRINGER SPLICE	(6x6) 141 x 141 x 900 LG.	14 LB. CREOSOTE TREATMENT #1 BTR FIR

### HARDWARE REQUIREMENTS

ITEM NO.	QTY.	DESCRIPTION
17	76	WASHER 19mm DIA.
18	38	HEX NUT 19mm DIA.
19	7	HEX BOLT 19 x 406mm
20	8	HEX BOLT 19 x 660mm
21	4	HEX BOLT 19 x 508mm
22	2	HEX BOLT 19 x 356mm
23	11	HEX BOLT 19 x 300mm
24	6	HEX BOLT 19 x 557mm



2.743m WIDE STANDARD BACK END MODULE

2.743m WIDE STANDARD FRONT END MODULE

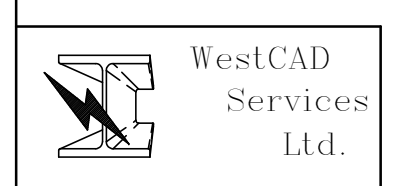
2.743m WIDE END FLOAT MODULES

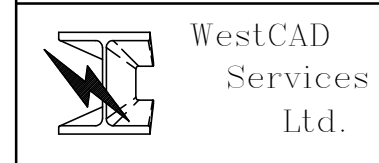
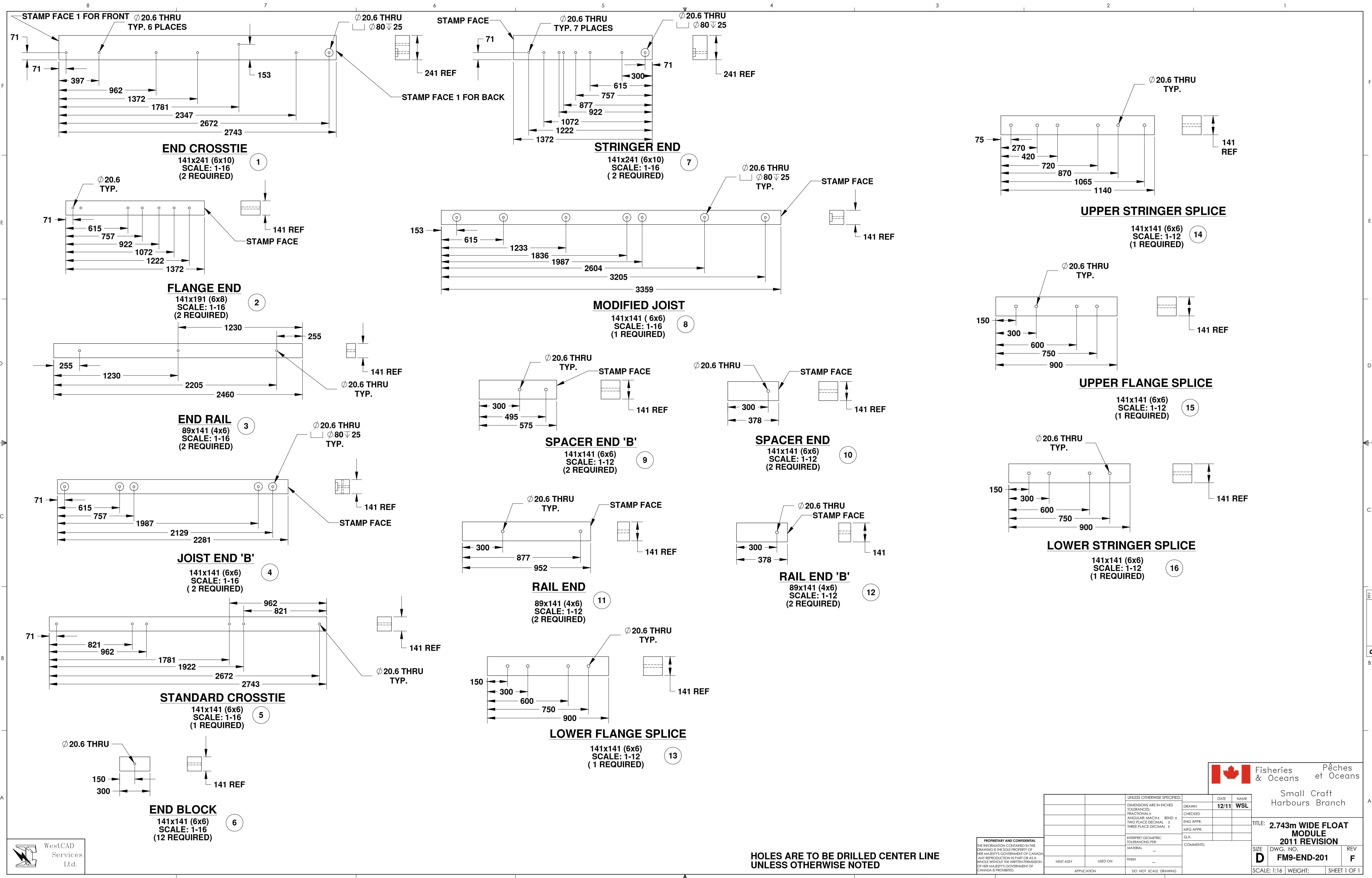
Fisheries & Oceans / Pêches et Océans  
Small Craft Harbours Branch

PROPRIETARY AND CONFIDENTIAL  
THE INFORMATION CONTAINED IN THIS DRAWING IS THE SOLE PROPERTY OF HER MAJESTY'S GOVERNMENT OF CANADA. ANY REPRODUCTION IN PART OR AS A WHOLE WITHOUT THE WRITTEN PERMISSION OF HER MAJESTY'S GOVERNMENT OF CANADA IS PROHIBITED.

UNLESS OTHERWISE SPECIFIED:	DATE	NAME
DIMENSIONS ARE IN INCHES	12/11	WSL
TOLERANCES:		
FRACTIONAL: ±	DRAWN	
ANGULAR: MACHS ±	CHECKED	
TWO PLACE DECIMAL: ±	ENG APPR.	
THREE PLACE DECIMAL: ±	MFG APPR.	
INTERPRET GEOMETRIC TOLERANCING PER:	Q.A.	
MATERIAL:	COMMENTS:	
FINISH:		
APPLICATION	DO NOT SCALE DRAWING	

TITLE: 2.743m WIDE FLOAT MODULE 2011 REVISION	
SIZE: D	DWG. NO.: FM9-END-200
SCALE: 1:12	WEIGHT: SHEET 1 OF 1
REV: G	





**HOLES ARE TO BE DRILLED CENTER LINE UNLESS OTHERWISE NOTED**

PROPRIETARY AND CONFIDENTIAL  
 THE INFORMATION CONTAINED IN THIS DRAWING IS THE SOLE PROPERTY OF HER MAJESTY'S GOVERNMENT OF CANADA. ANY REPRODUCTION IN PART OR AS A WHOLE WITHOUT THE WRITTEN PERMISSION OF HER MAJESTY'S GOVERNMENT OF CANADA IS PROHIBITED.

UNLESS OTHERWISE SPECIFIED:		DATE	NAME
DIMENSIONS ARE IN INCHES	DRAWN	12/11	WSL
TOLERANCES:	CHECKED		
FRACTIONAL: ±	ENG APPR.		
ANGULAR: MACH: ±	MFG APPR.		
TWO PLACE DECIMAL: ±			
THREE PLACE DECIMAL: ±			
INTERPRET GEOMETRIC TOLERANCING PER:	Q.A.		
MATERIAL:	COMMENTS:		
NEXT ASSY	USED ON	FINISH	
APPLICATION	DO NOT SCALE DRAWING		

TITLE: <b>2.743m WIDE FLOAT MODULE</b>		REV
2011 REVISION		F
SIZE: <b>D</b>	DWG. NO.: <b>FM9-END-201</b>	SCALE: 1:16
WEIGHT:	SHEET 1 OF 1	



