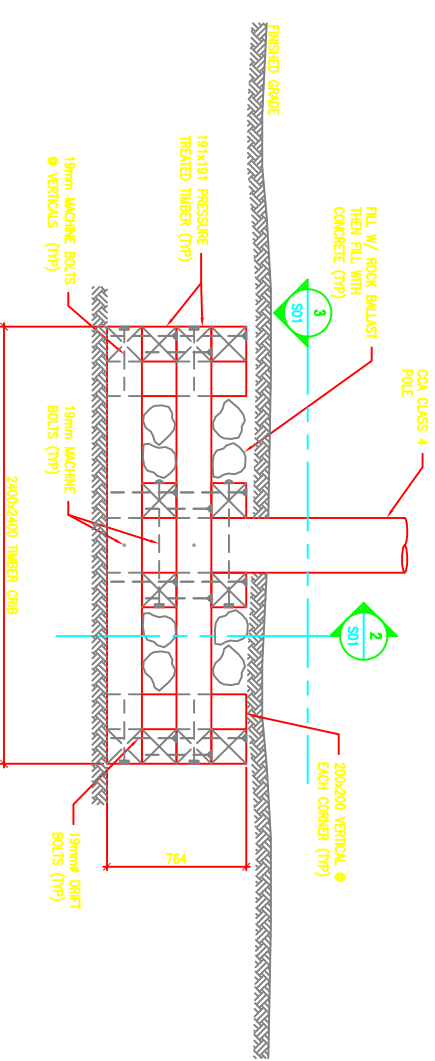
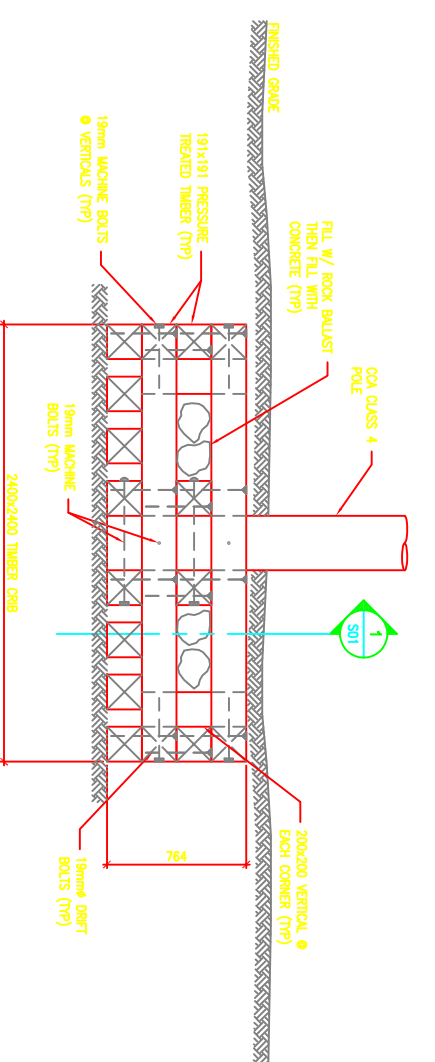


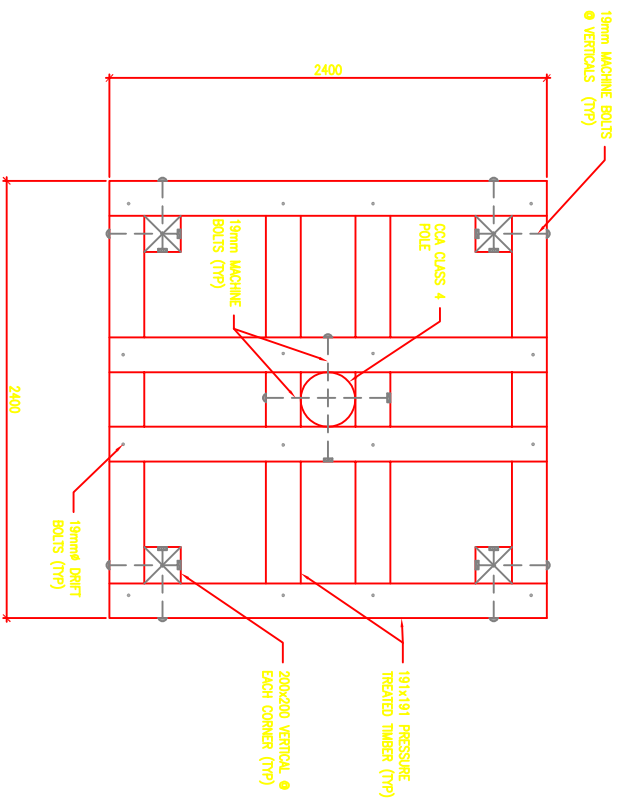
KEY LOCATION PLAN



1 POLE BASE DETAIL  
S01 1:20



2 POLE BASE DETAIL  
S01 1:20



3 POLE BASE PLAN DETAIL  
S01 1:20

**CONCRETE CONSTRUCTION**

1. PRECUT AND PRESERVE TIMBER PRIOR TO PRESERVATIVE TREATMENT.
2. BOTTOM TIMBERS: MEASURE LENGTHS AND CROSSING TO FORM BOTTOM TWO CORNERS OF CORNER.
3. CROSSING BOTTOM TIMBERS TO BE OF ONE PIECE.
4. LENGTHENING BOTTOM TIMBERS TO BE OF ONE PIECE.
5. LONGITUDINALS:
  - A. LONGITUDINALS ONE LENGTH FOR INDIVIDUAL CORNER.
  - B. SECURE LONGITUDINALS TO INTERSECTION OF CROSS TIES WITH DRIFT BOLT AND TO INTERSECTION OF VERTICAL POSTS WITH MACHINE BOLT DRIFT CROSS TIES LONGITUDINALS, ADJACENT WITH THE TOP TWO CORNERS.
  - C. ONE LENGTH ACROSS CORNER.
  - D. SECURE CROSS TIES TO INTERSECTION OF LONGITUDINALS WITH DRIFT BOLT AND TO INTERSECTION OF VERTICAL POSTS WITH MACHINE BOLT DRIFT VERTICAL POSTS.
  - E. VERTICAL POSTS.
  - F. ONE LENGTH FROM BIRTHAL OF CORNER TO TOP OF CORNERK.
  - G. LOCATE ONE VERTICAL POST IN CORNER OF EACH CORNER.

**TIMBER FINISHING NOTES**

1. ALL TIMBER AND LUMBER SHALL COMPLY WITH CSA-ONE.
2. ALL INTERSECTION LUMBER SHALL COMPLY WITH CSA 0141.
3. WOOD TREATMENT: PRESERVE TREATED TO BOLD AND TABLE 1.
4. FIELD TIMBER END OF TIMBER SHALL COMPLY TO THE FOLLOWING:
  - FIELD CUTS TO RECEIVE THREE (3) LIBERAL COATS OF PRESERVATIVE.
  - FILL ALL BORED HOLES WITH PRESERVATIVE IMMEDIATELY AFTER BORING.
  - RESISTANT TO STAIN AND DISCOLORATION.
5. USE TREATMENT IN ACCORDANCE WITH MSDS.
6. CORNERK PRESERVATIVE: WATERED IN WATER (SOLVENTALK CHEMICAL); 100%MSD FOR PLYING CORNER HEADLOCK AND EXTERIOR HEADLOCK.
7. ALL TIMBERS TO BE FULL LENGTH AND CUTTING TIMBERS IN CORNERK.
  - A. ALL STEEL AND FASTENINGS TO BE CSA 0441.1, GRADE 300M.
  - B. WALS AND SPICES TO CSA B111.1/107.
  - C. BOLDING BOLTS AND NUTS FOR CORNERK BOTTOM HEAD AND DRUMING OR WEDGE POINT.
  - D. ALL WELDING AND FASTENINGS TO BE HOT DIPPED GALVANIZED TO CSA 0144.
8. ALL DRIFT BOLTS TO BE 19 mm DIAMETER.
9. ALL MACHINE BOLTS TO BE 19 mm DIAMETER.
  - A. ALL MACHINE BOLTS TO BE 19 mm DIAMETER C/W 7.9 mm THICK X 7.9 mm DIAMETER ROUND PLATE WASHERS AND NUTS. HOLE DIAMETERS TO BE 8 mm.
  - B. DRIFT BOLTS: ALL DRIFT BOLTS SHALL HAVE A LENGTH EQUAL TO THE THICKNESS OF THE TIMBERS BEING FASTENED LESS 50 mm.
  - C. ALL MACHINE BOLTS SHALL HAVE A LENGTH EQUAL TO THE THICKNESS OF THE TIMBERS BEING FASTENED PLUS THICKNESS OF WASHER PLUS 50mm.
  - D. ALL HOLES FOR MACHINE BOLTS TO BE SAME DIAMETER AS BOLT.
  - E. USE SCREWERS SHALL HAVE A LENGTH EQUAL TO THICKNESS OF TIMBER BEING FASTENED LESS 50 mm.
  - F. ALL HOLES TO BE DRILLED OR SCREWED TO 1/2" DIA. AND HOLE SHOULD BE CENTERED BETWEEN TOP OF SCREW AND FOR FULL LENGTH.
  - G. ALL HOLES TO BE DRILLED OR SCREWED TO 1/2" DIA. AND HOLE SHOULD BE CENTERED BETWEEN TOP OF SCREW AND FOR FULL LENGTH.
  - H. ALL MACHINE BOLTS AND LIVE SCREWERS TO BE GALVANIZED 12 mm ON ALL EXPOSED SURFACES.
10. CORNERK BOLTS: HAND DRUMING APPROXIMATELY 100 mm FROM CORNERK LUMBER. CORNERK WASHERS AND OTHER SELECTED MATERIALS.
  - A. DRIFT BOLTS IN PLACE: MINIMUM 200 TO 250 CORNERK METERS.
  - B. DRIFT BOLTS TO BE WELL GALVANIZED WITH A MINIMUM SIZE OF NOT EXCEEDING 400 MM ON ANY SIDE AND MINIMUM SIZE OF NOT LESS THAN 200 MM ON ANY SIDE.

**CONCRETE NOTES**

1. ALL CONCRETE WORK SHALL CONFORM TO CSA STANDARDS 423.1, 423.2 & 423.3.
2. CONCRETE REQUIREMENTS:
 

STRENGTH	CLASS OF EXPOSURE	SLOPE	MIN. COVER	W/C RATIO
25 MPa	F-2	75 MM	5-50	0.40

STRUCTURAL POLE BASE  
DETAILS

YARD LIGHTING FOR  
STORAGE AREA

Drawing - design

drawn - design	G. MARSH	designed - editing	R. K. HAINCOCK
date - date	2021.02.25	checked - verify	K. HAINCOCK
scale - scale	AS SHOWN	approved - approve	R. BAILEY
project no. - project no.	JBC-21-007	drawing no. - no du dessin	S01
		sheet - feuille	0

no.	revision	date	by	approved
0	ISSUED FOR CONSTRUCTION	2021.03.30	GM	RB