

NOTES

- ALL MATERIAL TO BE MARINE GRADE 6061-T6 ALUMINUM UNLESS NOTED OTHERWISE.
- ALL DIMENSIONS IN MILLIMETERS UNLESS OTHERWISE NOTED.
- ALL WELDING TO CONFORM TO CSA W59.-2 M991 AND BE CARROED OUT BY A COMPANY CERTIFIED TO CSA W47.2-M1987.
- ALL WELDS TO BE CONVEX CONTINUOUS FILLET WELDS WITH 8mm LEG UNLESS OTHERWISE SPECIFIED.
- ALL BOLTS AND ASSOCIATED HARDWARE TO BE GRADE 316 STAINLESS STEEL.
- 76x6 FLAT BARS USED TO ATTACH DAYMARKS. ENGINEER TO ADVISE LOCATION ON TOWER.
- USE VINYL WASHERS AND VINYL BUSHINGS ON ALL BOLTED CONNECTIONS.

No.	Description	Date	By
0	ISSUED FOR REVIEW	12/10/21	R.H.

REVISIONS

Stamp	PROVINCE OF Nfld. PERMIT HOLDER CLASS "A" This Permit Allows DMG CONSULTING LTD To practice Professional Engineering in this Province NO568 Permit No. 2021

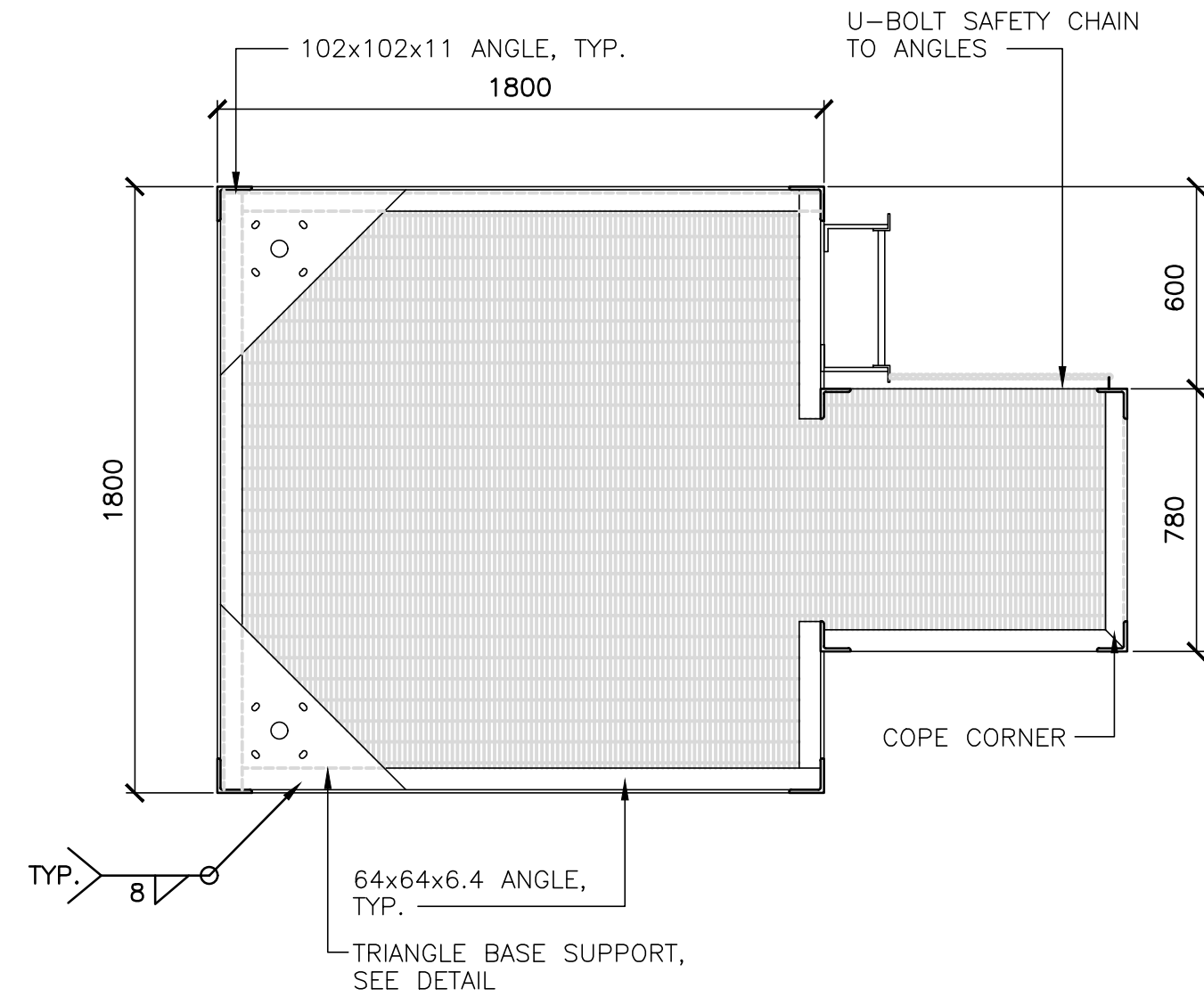


Consultants

Project Title
DEPT OF FISHERIES AND OCEANS CANADIAN COAST GUARD NEWFOUNDLAND & LABRADOR ALUMINUM TOWER DESIGN MODIFICATIONS

Drawing Title
7.5M ALUMINUM TOWER ELEVATIONS, SECTIONS

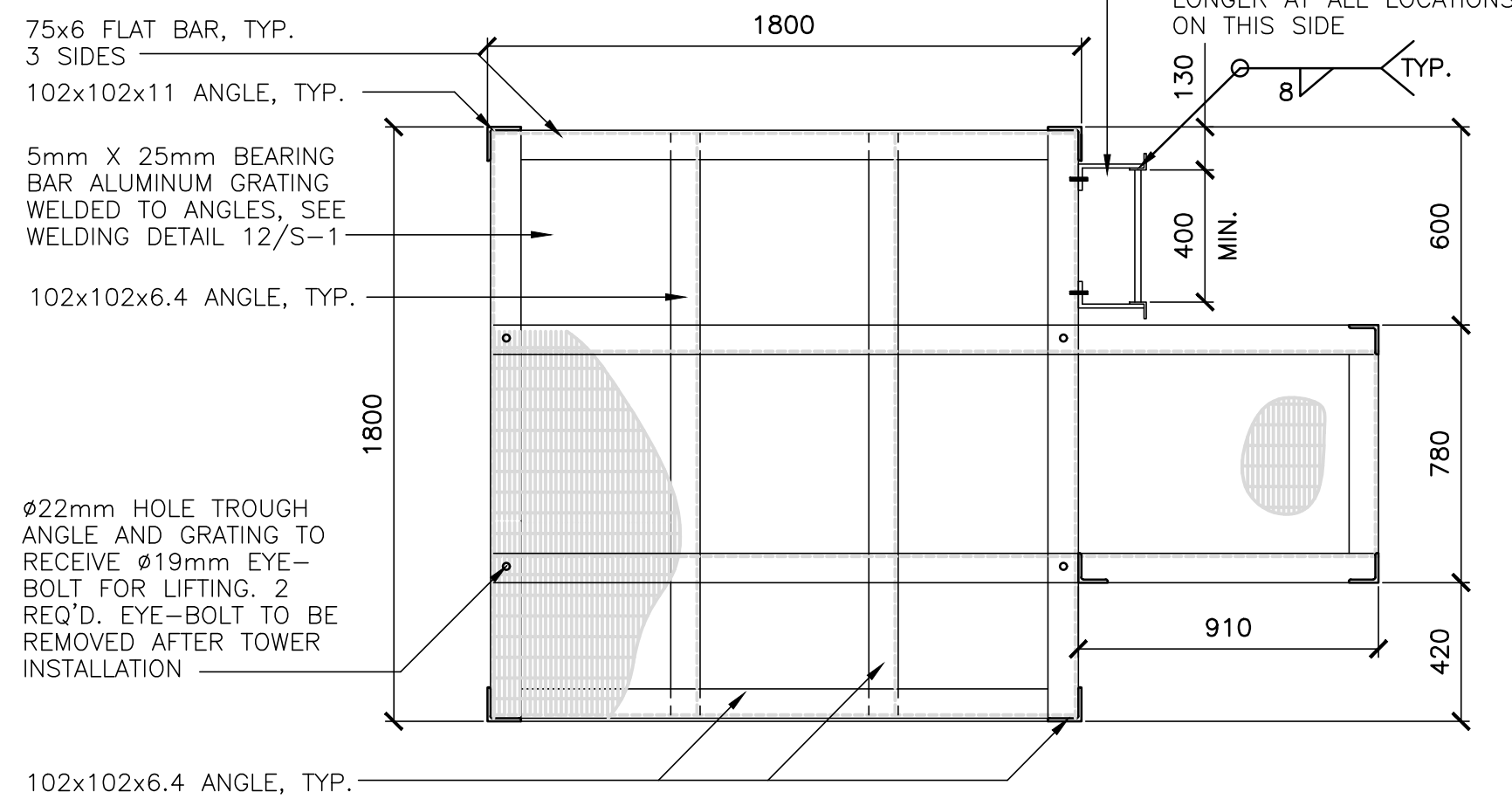
Dwn. By F. COLLIER	Chk. By R.S. HEDGES
Date NOVEMBER, 2021	Scale AS SHOWN
Proj. No. 1595-2021	Sheet No. S-4
	Rev. No. 0



SECTION

SCALE: 1:20

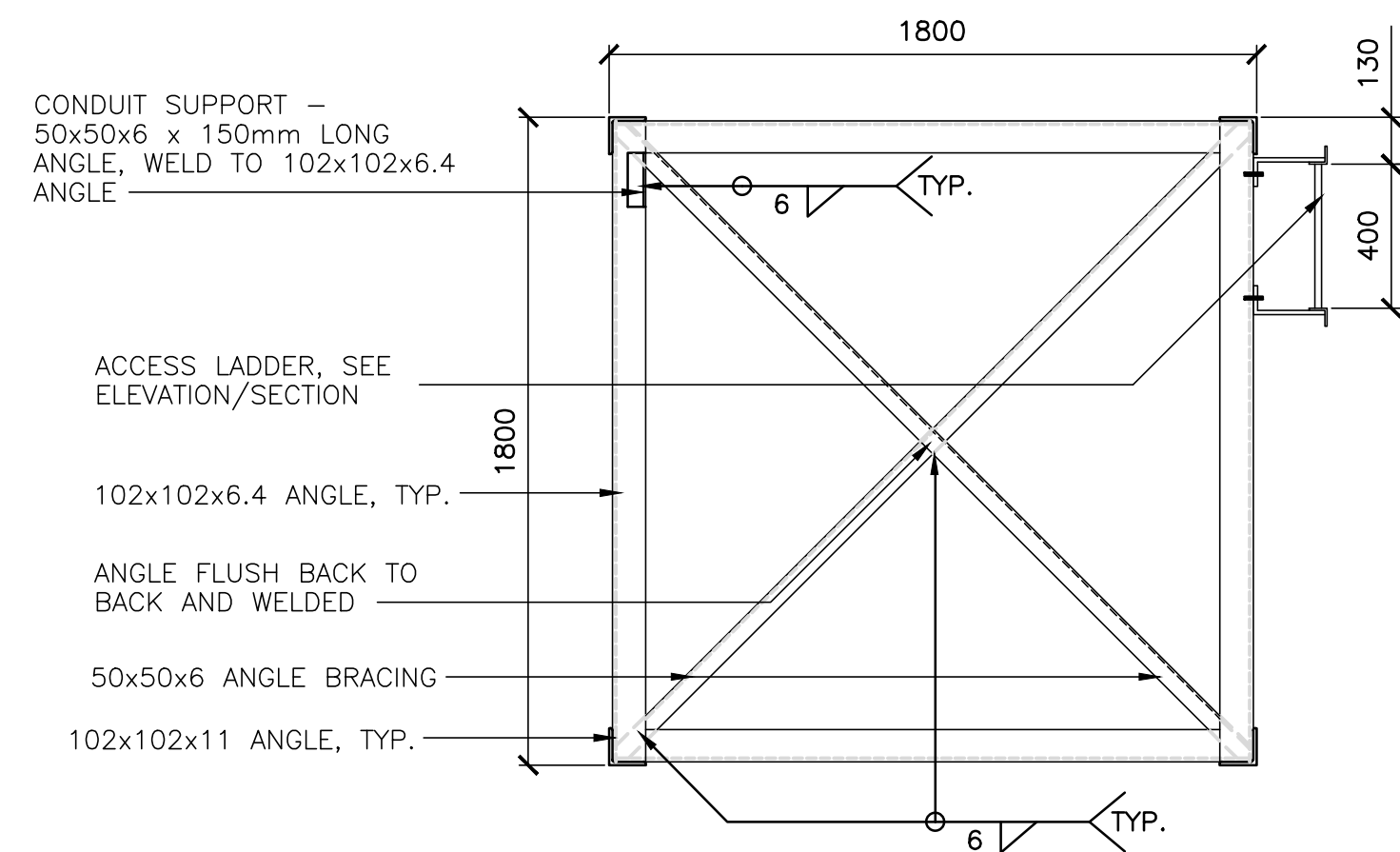
3
S-4



SECTION

SCALE: 1:20

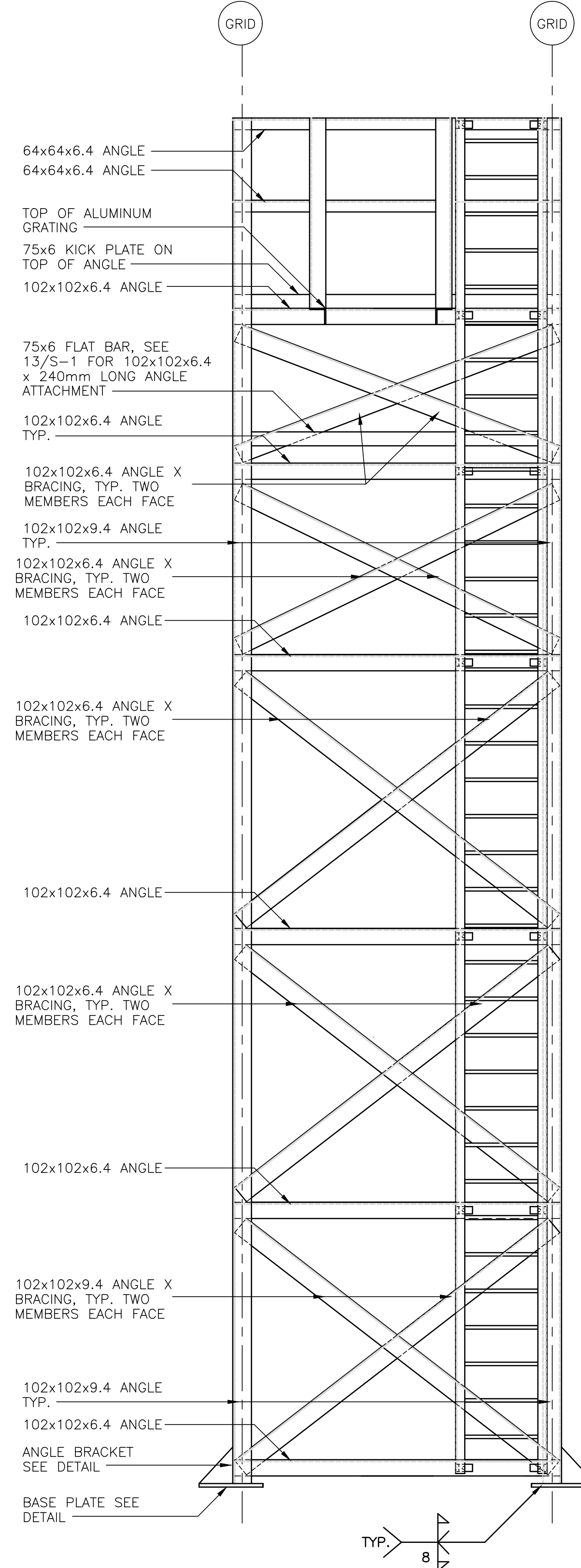
4
S-4



SECTION

SCALE: 1:20

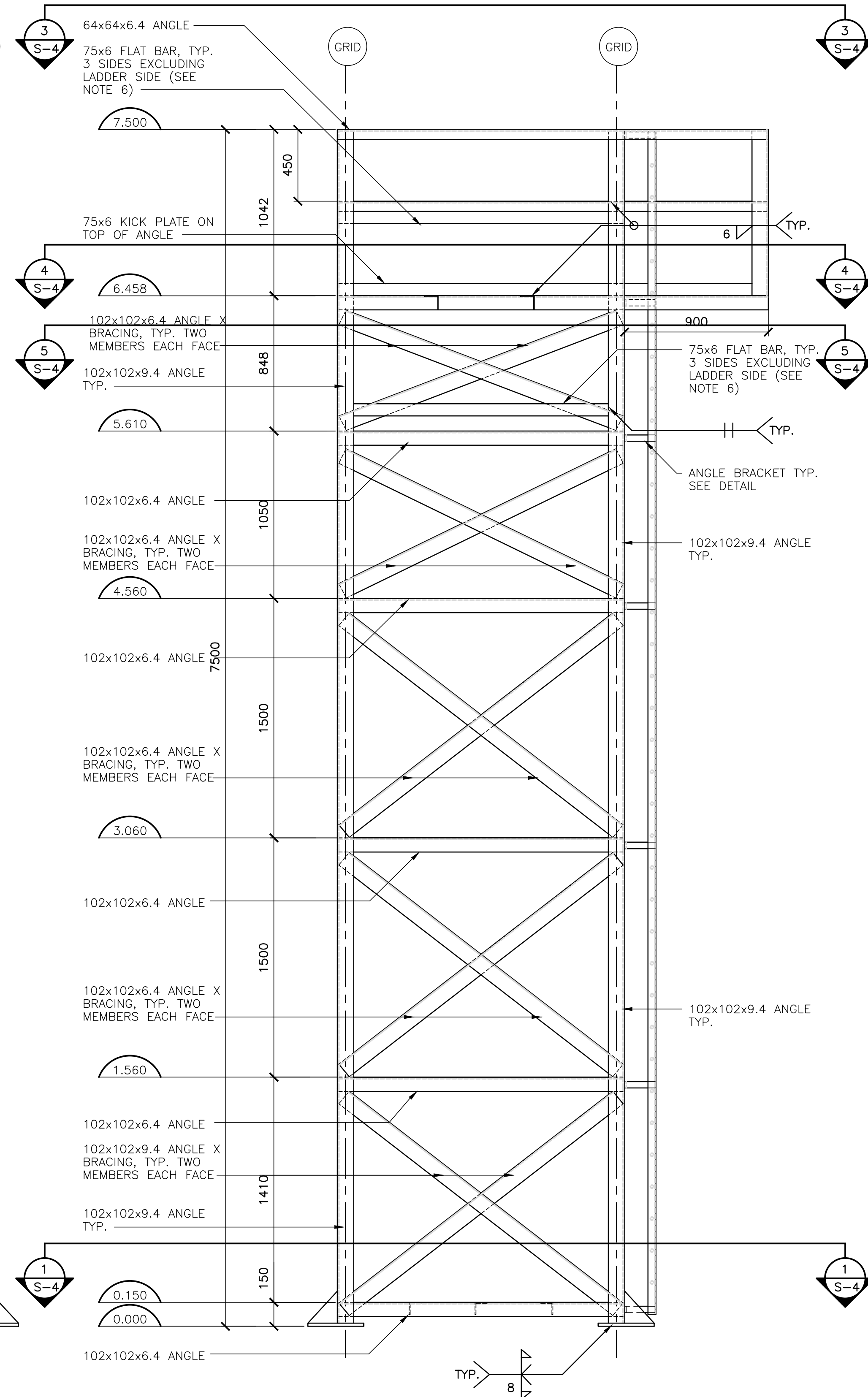
5
S-4



FRONT ELEVATION

SCALE: 1:20

2
S-4



SIDE ELEVATION

SCALE: 1:20

1
S-4