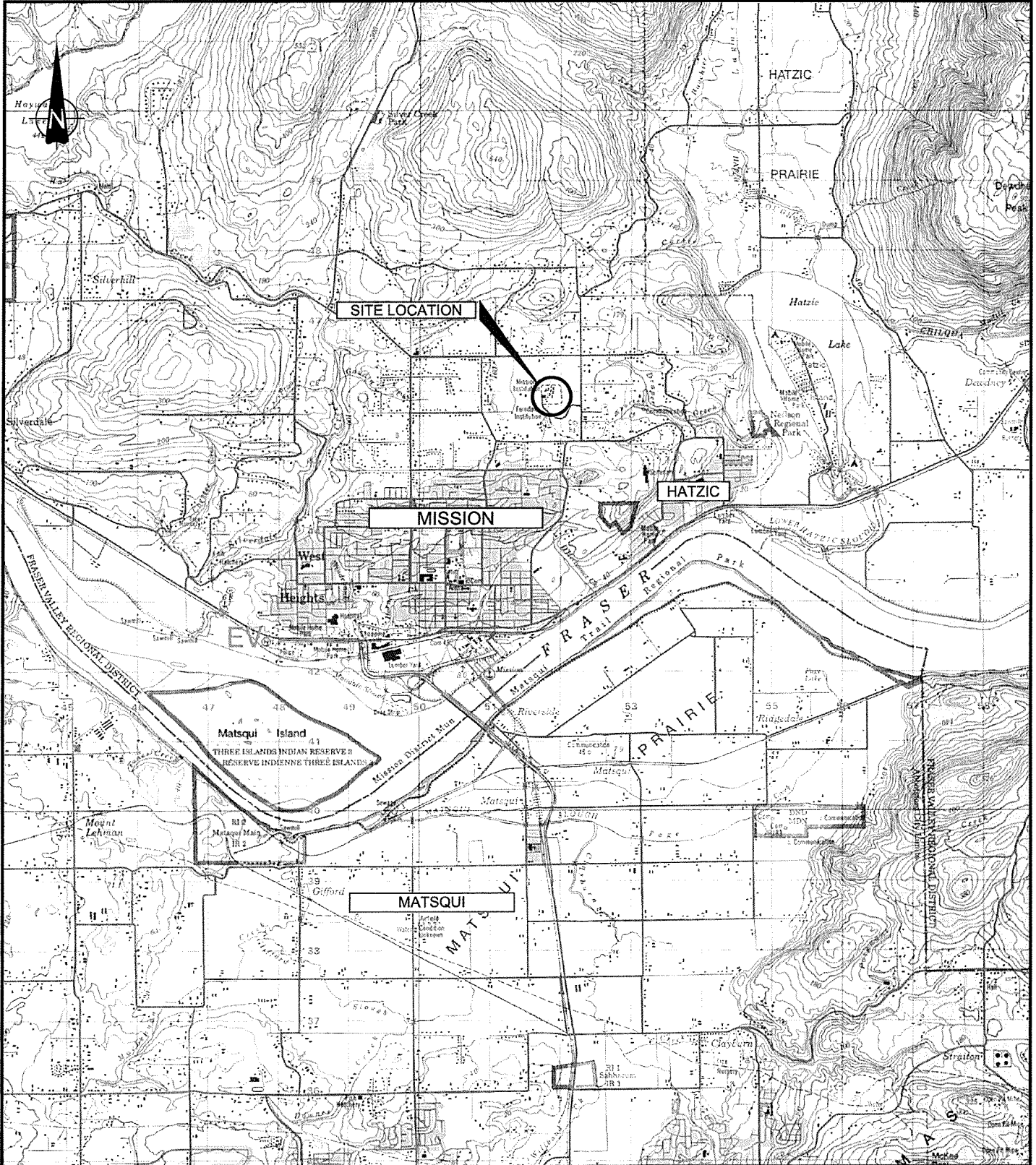

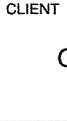
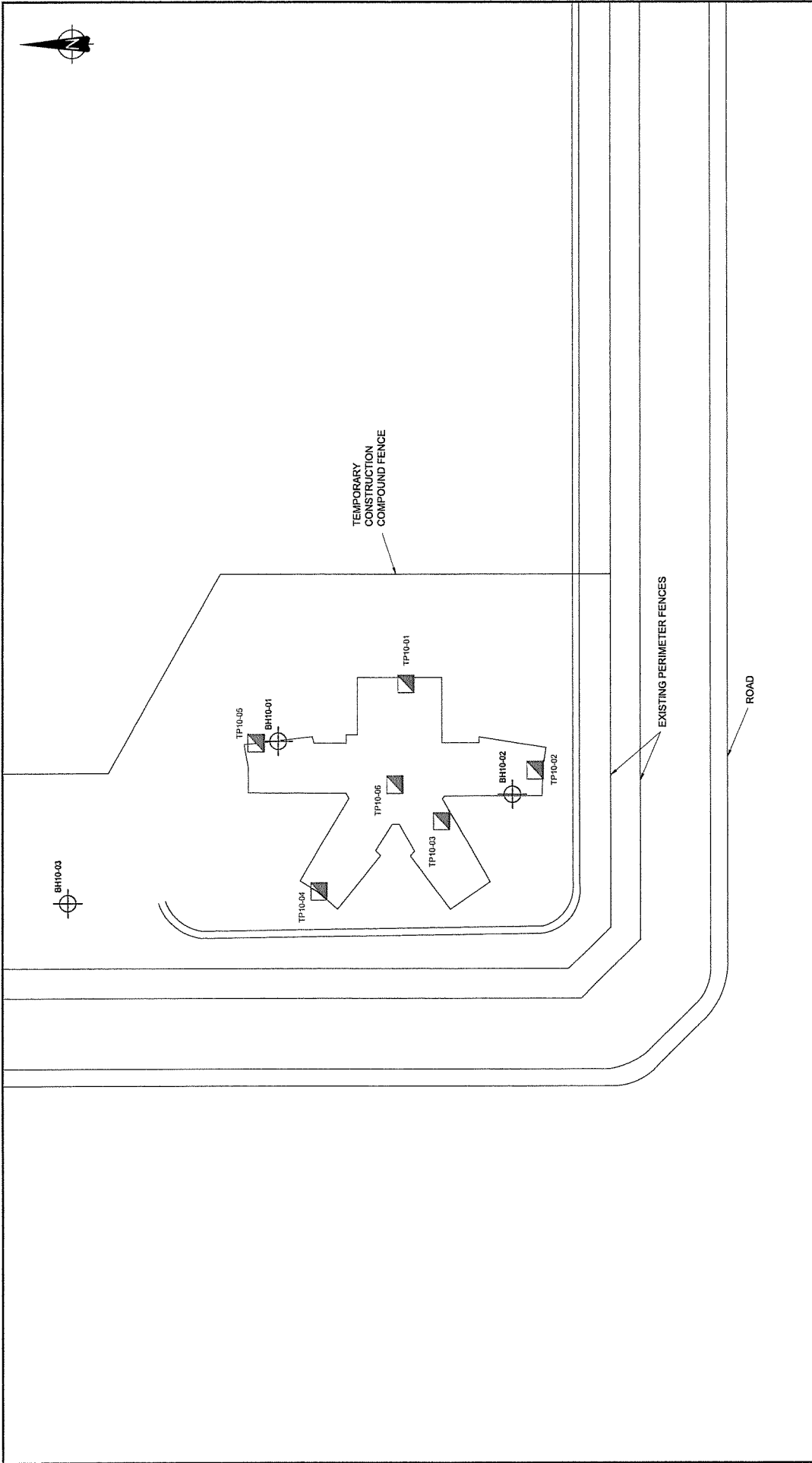


FIGURES



AMEC Earth & Environmental 31899 Mercantile Way, Abbotsford, B.C., V2T 4C3 Tel. 604-864-9971				CLIENT LOGO 		CLIENT PUBLIC WORKS AND GOVERNMENT SERVICES CANADA	
PROJECT MISSION INSTITUTION 8751 STAVE LAKE STREET MISSION, BC				DWN BY: MW CHK'D BY: SA		DATUM: NAD83 REV. NO.: A	
TITLE LOCATION PLAN				PROJECTION: UTM Zone 10 SCALE: AS SHOWN		DATE: DECEMBER 2010 PROJECT NO: KA21014 FIGURE No. 001	



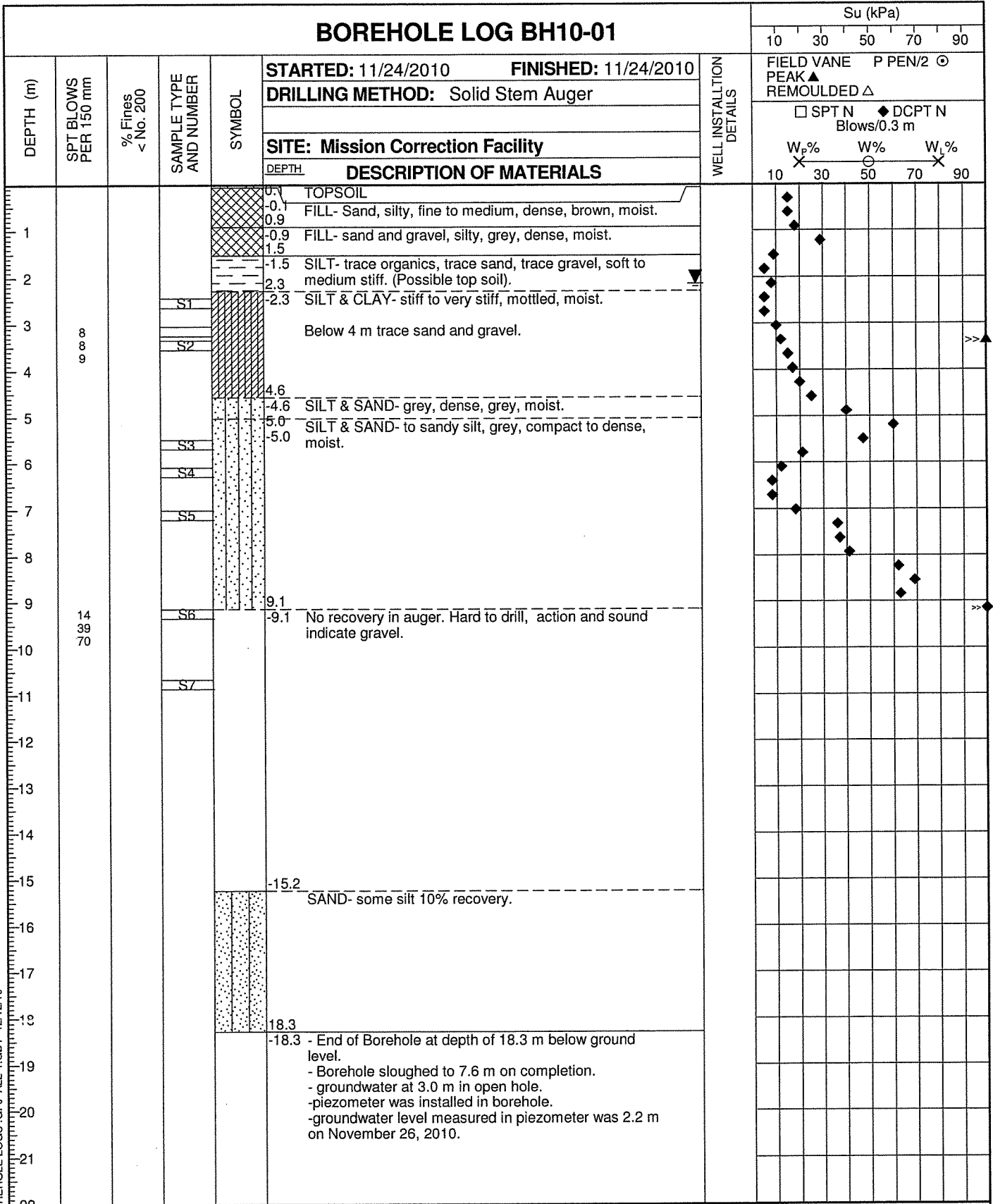
 CLIENT:	 CLIENT:	PROJECT:	DATE:
		MISSION INSTITUTION 8752 STAVE LAKE STREET MISSION, BC	DECEMBER 2010
 AMEC Earth & Environmental 31899 Mercantile Way, Abbotsford, B.C., V2T 4C3 Tel. 604-864-9871		DRAWN BY:	PROJECT NO:
		MW	KX21014
		CHECKED BY:	SA
		DATE:	REV. NO.:
		TITLE:	FIGURE NO.:
		BOREHOLE AND TESTPIT SITE LOCATION PLAN	A
		PROJECTION:	FIGURE No.:
		UTM Zone 10	002
		SCALE:	
		AS SHOWN	





APPENDIX A
Borehole Logs

BOREHOLE LOG BH10-01



N-GEO-CONVERT BOREHOLE LOGS.GPJ ALL-1.GDT 12/12/10



AMEC
Earth & Environmental
31899 Mercantile Way
Abbotsford, BC V2T 4C3

PROJECT NO.: KA210014-100
PROJECT: Mission Correction Facility
LOCATION: 8752 Stave Lake Street Mission BC
LOGGED BY: SA **REVIEWED BY:** BF
SHEET 1 OF 1 **BOREHOLE No. BH10-01**

BOREHOLE LOG BH10-02

Su (kPa)

10 30 50 70 90

DEPTH (m)	SPT BLOWS PER 150 mm	% Fines < No. 200	SAMPLE TYPE AND NUMBER	SYMBOL	STARTED: 11/24/2010 FINISHED: 11/24/2010		WELL INSTALLATION DETAILS	FIELD VANE P PEN/2 ⊙		
					DRILLING METHOD: Solid Stem Auger			PEAK ▲ REMOULDED Δ		
					SITE: Mission Correction Facility				□ SPT N ◆ DCPT N Blows/0.3 m	
					DEPTH DESCRIPTION OF MATERIALS				W _p % W% W _L % 10 X 30 ○ 50 70 X 90	
					0.0	TOPSOIL				
					0.6	FILL- sand & gravel, silty, dense, brown, moist.				
1					0.6	FILL- sand and gravel, silty, grey, dense, moist.				
					1.5					
2			S1		-1.5	SILT- trace to some organic, soft, brown, moist.				
3										
4			S2		4.0	SILT & CLAY- soft, grey, wet.				
5					5.2					
			S3		-5.2	SAND- silty, trace gravel, dense, grey, wet.				
			S5		-5.6	SILT- some sand, soft, grey, wet.,				
6					-5.6					
					6.1	SAND- some silt, trace gravel, dense, grey, moist.				
7			S6		-6.1					
8										
			S7							
9					9.1					
			S8		-9.1	SAND- trace to some gravel, some silt, dense, grey, wet. Hard to drill				
10										
			S9		11.6					
11					-11.6	SILT- non plastic, trace sand, stiff, grey, wet.				
12					12.2					
					-12.2	SAND- silty, dense, grey, wet.				
13										
14										
15					15.2					
16					-15.2	- End of Borehole at depth of 15.2 m. -Borehole sloughed to 11.6 m on completion. -groundwater at 8.5 m in open hole. -Piezometer was installed in borehole. -ground water level measured in piezometer was 4.8 m on November 26, 2010.				
17										
18										
19										
20										
21										
22										

N-GEO-CONVERT BOREHOLE LOGS.GPJ ALL-1.GDT 12/12/10



AMEC
Earth & Environmental
31899 Mercantile Way
Abbotsford, BC V2T 4C3

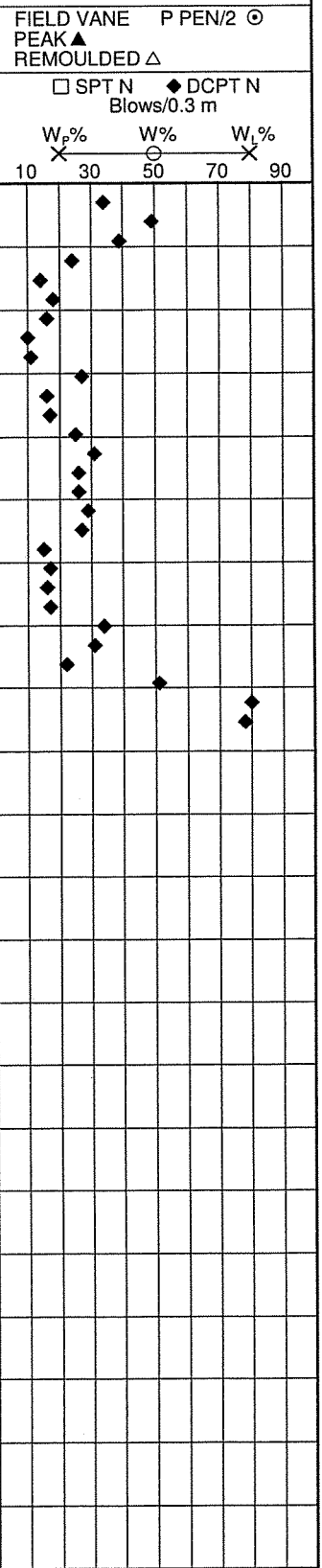
PROJECT NO.: KA210014-100
PROJECT: Mission Correction Facility
LOCATION: 8752 Stave Lake Street Mission BC
LOGGED BY: SA **REVIEWED BY:** BF
SHEET 1 OF 1 **BOREHOLE No. BH10-02**

BOREHOLE LOG BH10-03

Su (kPa)

10 30 50 70 90

DEPTH (m)	SPT BLOWS PER 150 mm	% Fines < No. 200	SAMPLE TYPE AND NUMBER	SYMBOL	STARTED: 11/24/2010 FINISHED: 11/24/2010 DRILLING METHOD: Solid Stem Auger SITE: Mission Correction Facility		WELL INSTALLATION DETAILS	FIELD VANE	P PEN/2	REMOULDED Δ
					DEPTH	DESCRIPTION OF MATERIALS		Blows/0.3 m	W _p %	W%
0.0				[Cross-hatch symbol]	0.0	ASPHALT				
0.1				[Cross-hatch symbol]	0.1	FILL- silt, sandy, gravelly, stiff, brown, moist.				
1.5						Trace gravel below 1.5 m.				
2.4			S1	[Dotted symbol]	2.4	SILT- trace organics, soft, brown, moist.				
3.0				[Dotted symbol]	3.0	SILT- some sand, soft, mottled, moist to wet.				
4.6			S2	[Dotted symbol]	4.6	SILT- sandy, stiff, brown, moist to wet.				
5.5				[Dotted symbol]	5.5	SILT- trace to some silt, stiff, brown, moist to wet.				
7.0			S3	[Dotted symbol]	7.0	SILT- some sand, some gravel, stiff, brown, wet.				
9.1			S4	[Dotted symbol]	9.1	- End of Borehole at depth of 9.1 m. - Borehole sloughed to 4.6 m on completion. - groundwater at 4.0 m in open hole.				



N-GEO-CONVERT BOREHOLE LOGS.GPJ ALL-1.GDT 12/12/10



AMEC
 Earth & Environmental
 31899 Mercantile Way
 Abbotsford, BC V2T 4C3

PROJECT NO.: KA210014-100
PROJECT: Mission Correction Facility
LOCATION: 8752 Stave Lake Street Mission BC
LOGGED BY: SA **REVIEWED BY:** BF
SHEET 1 OF 1 **BOREHOLE No. BH10-03**