



Revision/Revision	Description/Description	Date/Date
8	FIRE SERVICE PROFILE #1-1 ADDED	21/12/17
7	RE-ISSUED FOR TENDER	21/11/23
6	ISSUED FOR TENDER	21/05/21
5	RE-ISSUED FOR REVIEW	21/03/05
4	ISSUED FOR TENDER	19/02/06
3	100% DESIGN SUBMISSION	18/12/07
2	99% DESIGN SUBMISSION	18/08/31
1	66% DESIGN REVIEW	18/06/21
0	30% DESIGN REVIEW	17/11/17

CORRECTIONAL SERVICES OF CANADA

8751 STAVE LAKE ST. MISSION, B.C.

Project Title/Titre du projet
8751 STAVE LAKE ST. MISSION, B.C.

MISSION MEDIUM INSTITUTION WATERMAIN REPLACEMENT

Consultant Signature Only

Designed by/Concept par
G.R.

Drawn by/Dessiné par
B.D.

PWOSC Project Manager/Administrateur de Projets TPSGC
TONY TANG

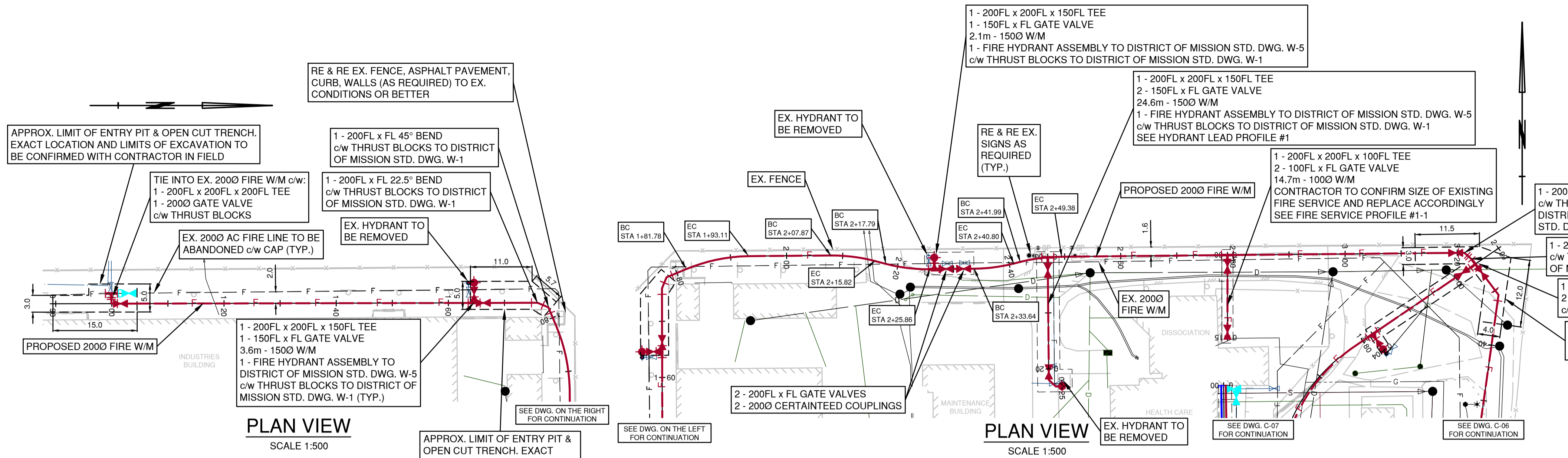
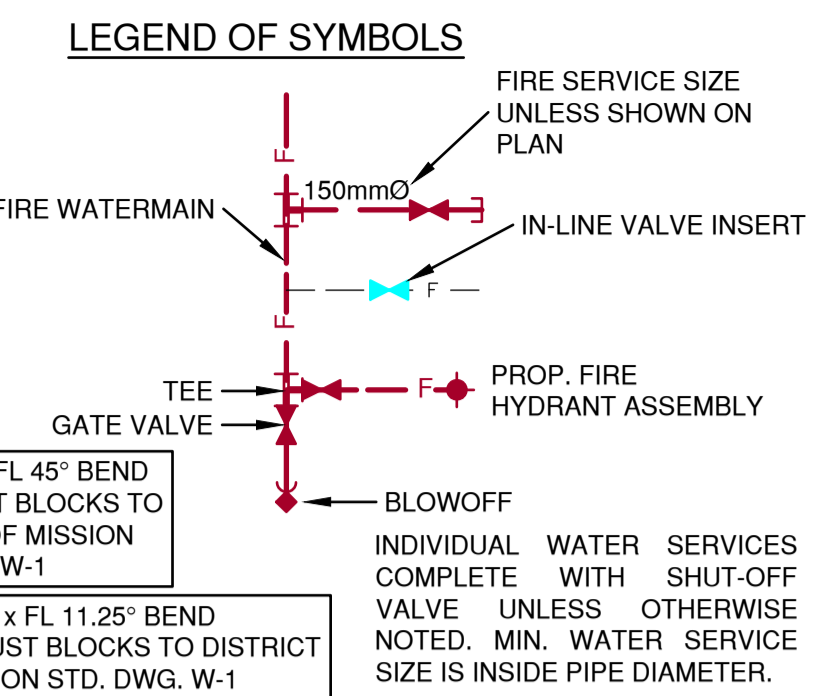
Regional Manager, Architectural and Engineering Services
Gestionnaire régionale, Services d'architecture et de génie, TPSGC

Drawing Title/Titre du dessin
WATERMAIN FIRE

SCALE 1:500

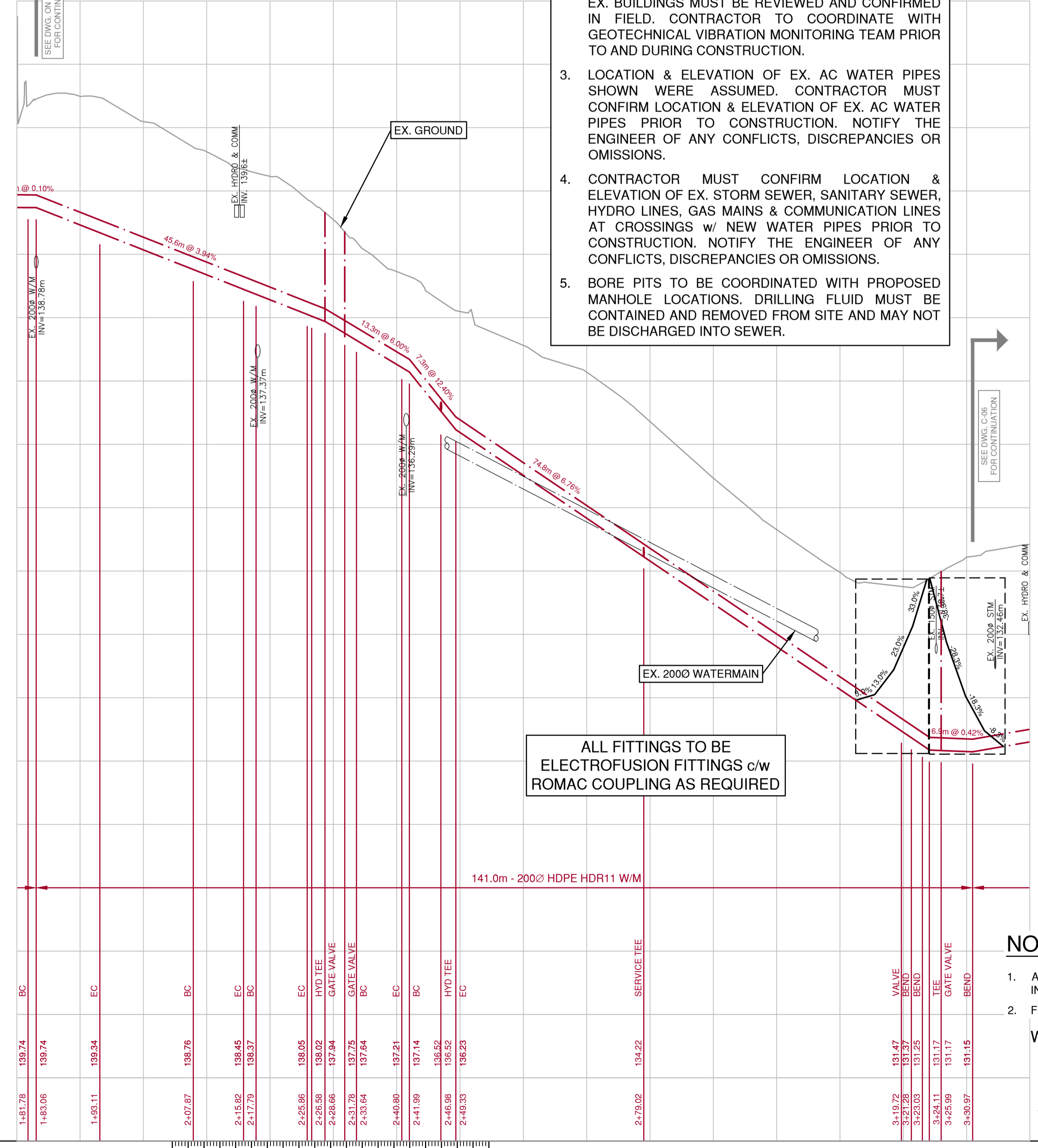
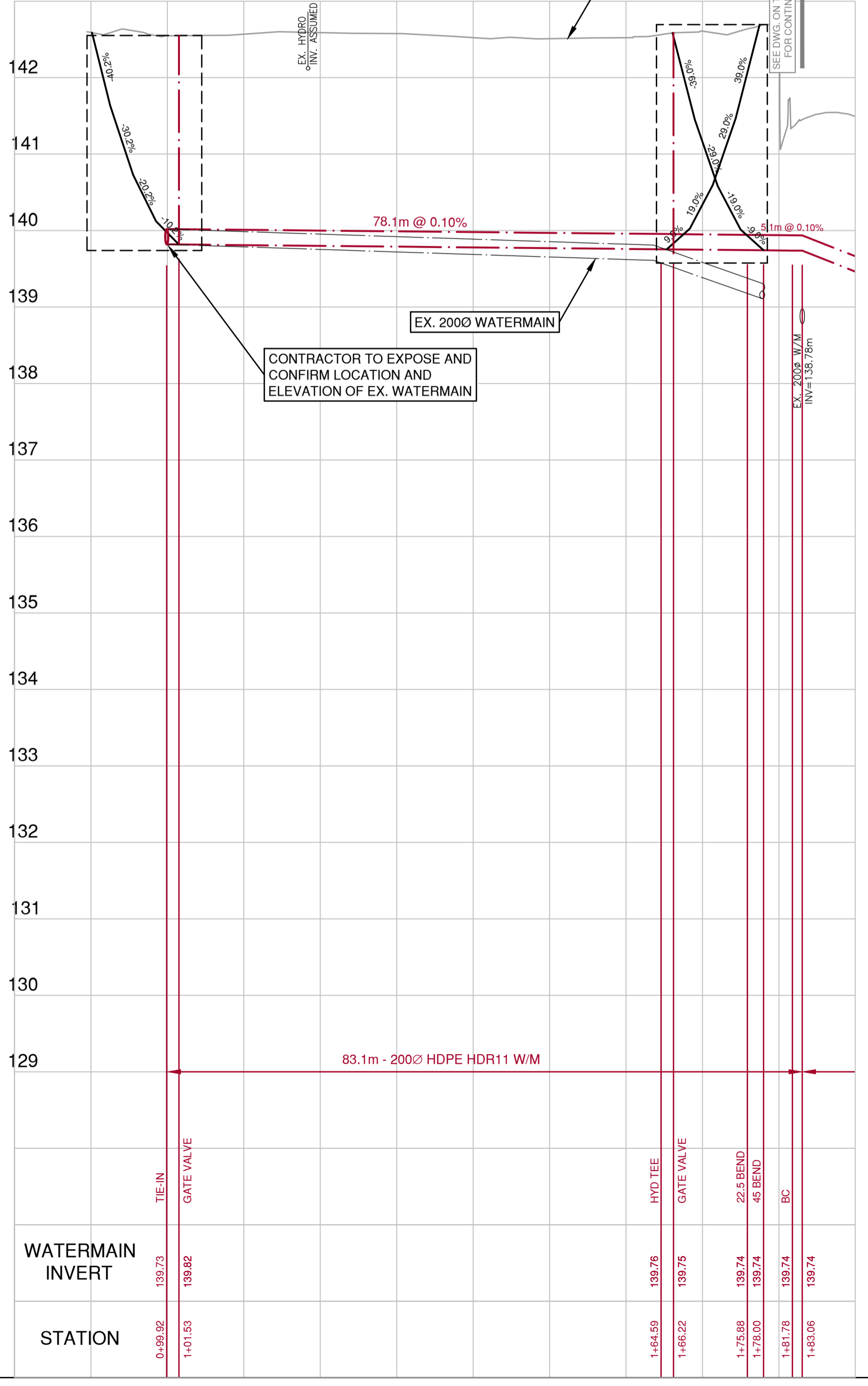
Project No./No. du projet R.089147.001	Sheet/Fauille C-05	Revision no./La Révision no. 8
--	------------------------------	--

OF 10

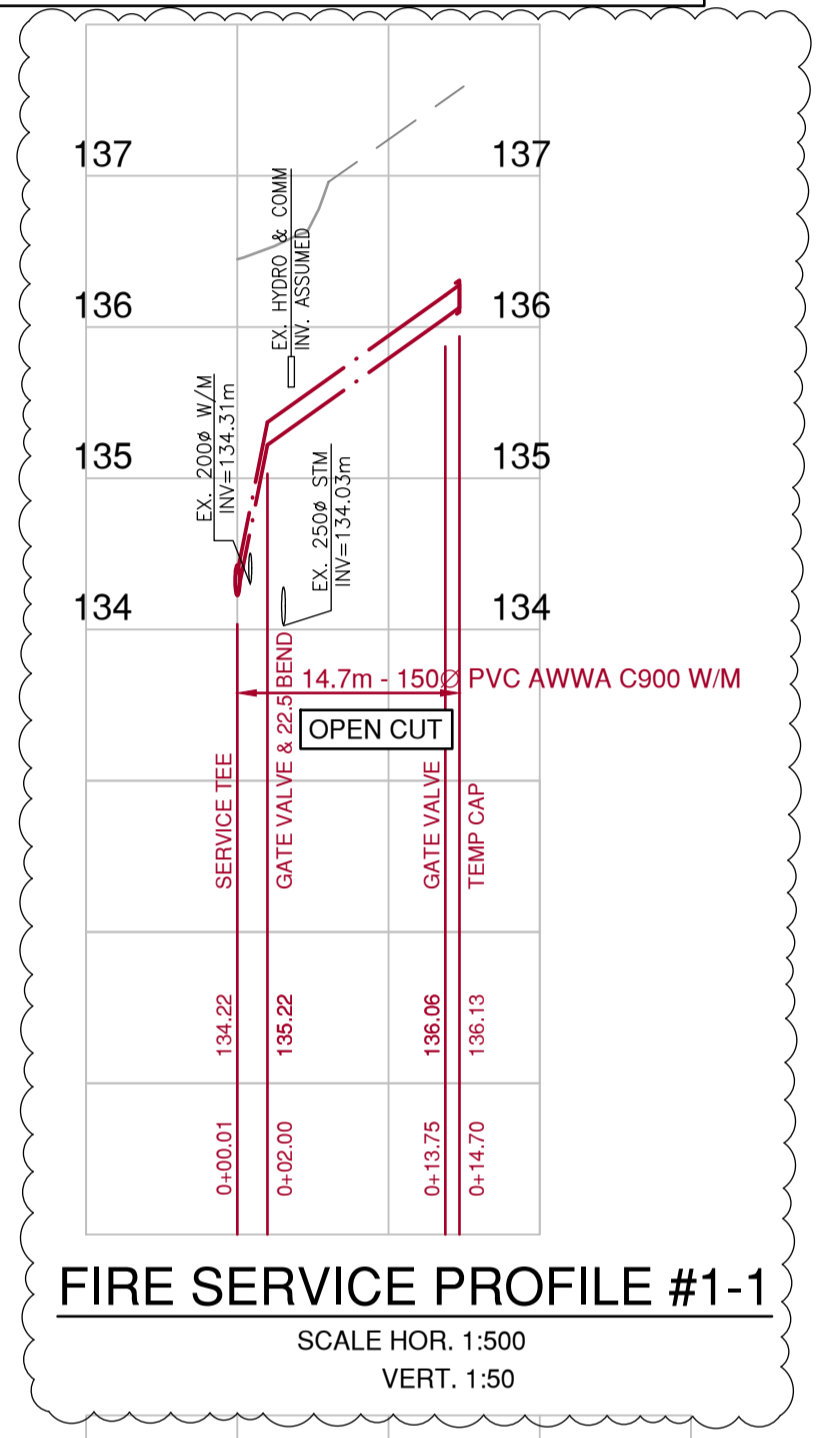


FIRE WATER MAIN PROFILE
SCALE HOR. 1:500
VERT. 1:50

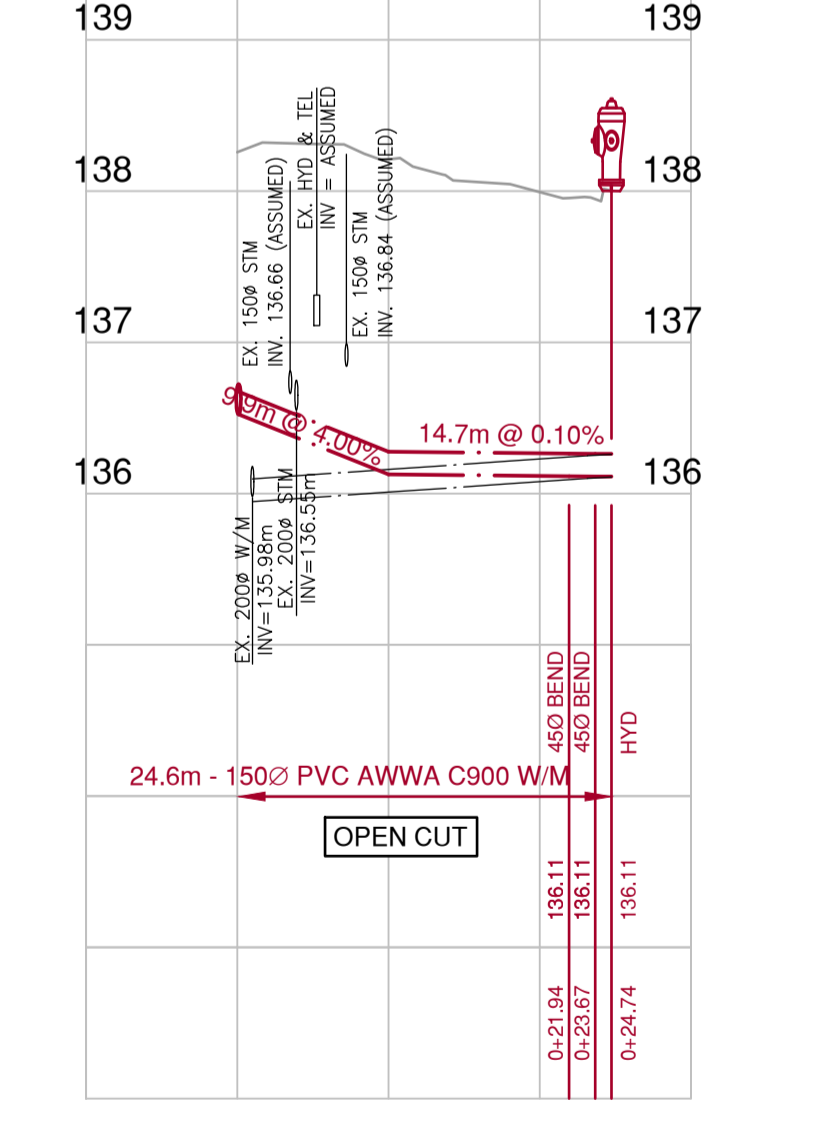
FIRE WATER MAIN PROFILE
SCALE HOR. 1:500
VERT. 1:50



- IMPORTANT:**
- OPEN CUT EXCAVATION ADJACENT TO EX. BUILDINGS MUST BE REVIEWED/APPROVED BY GEOTECHNICAL ENGINEER IN FIELD.
 - IMPACT OF HORIZONTAL DIRECTIONAL DRILLING TO EX. BUILDINGS MUST BE REVIEWED AND CONFIRMED IN FIELD. CONTRACTOR TO COORDINATE WITH GEOTECHNICAL VIBRATION MONITORING TEAM PRIOR TO AND DURING CONSTRUCTION.
 - LOCATION & ELEVATION OF EX. AC WATER PIPES SHOWN WERE ASSUMED. CONTRACTOR MUST CONFIRM LOCATION & ELEVATION OF EX. AC WATER PIPES PRIOR TO CONSTRUCTION. NOTIFY THE ENGINEER OF ANY CONFLICTS, DISCREPANCIES OR OMISSIONS.
 - CONTRACTOR MUST CONFIRM LOCATION & ELEVATION OF EX. STORM SEWER, SANITARY SEWER, HYDRO LINES, GAS MAINS & COMMUNICATION LINES AT CROSSINGS w/ NEW WATER PIPES PRIOR TO CONSTRUCTION. NOTIFY THE ENGINEER OF ANY CONFLICTS, DISCREPANCIES OR OMISSIONS.
 - BORE PITS TO BE COORDINATED WITH PROPOSED MANHOLE LOCATIONS. DRILLING FLUID MUST BE CONTAINED AND REMOVED FROM SITE AND MAY NOT BE DISCHARGED INTO SEWER.



FIRE SERVICE PROFILE #1-1
SCALE HOR. 1:500
VERT. 1:50



HYDRANT LEAD PROFILE #1
SCALE HOR. 1:500
VERT. 1:50

NOTES

- ALL ELEVATIONS ARE GEODETIC AND REFERENCED TO EXISTING INTEGRATED SURVEY MONUMENTS.
- FIGURED DIMENSIONS SHALL GOVERN OVER SCALED DIMENSIONS.

WATERMAIN INVERT

STATION	LEGAL DESCRIPTION
2-79.02	LOT 13, SECTIONS 27, 33 & 34, TOWNSHIP 17, N.W.D., PLAN NWP 64228