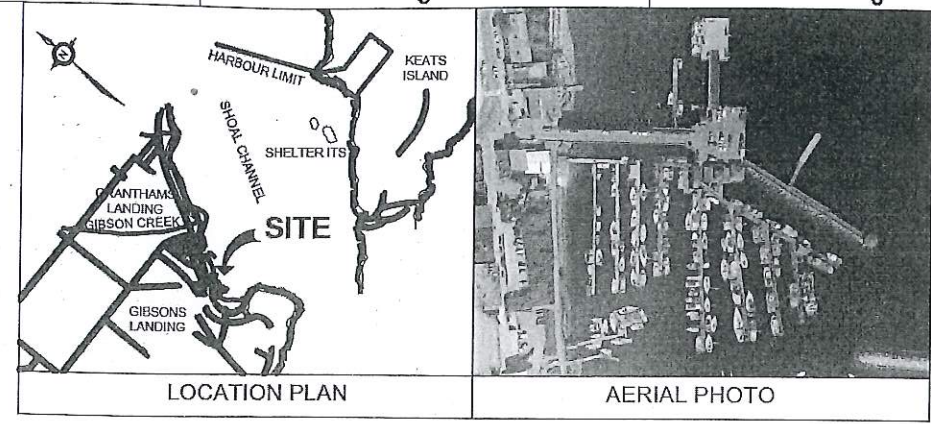


Rev.	Date	Description
01	2019/05/14	ISSUE FOR TENDER
02	2019/03/14	ISSUED FOR CLIENT REVIEW



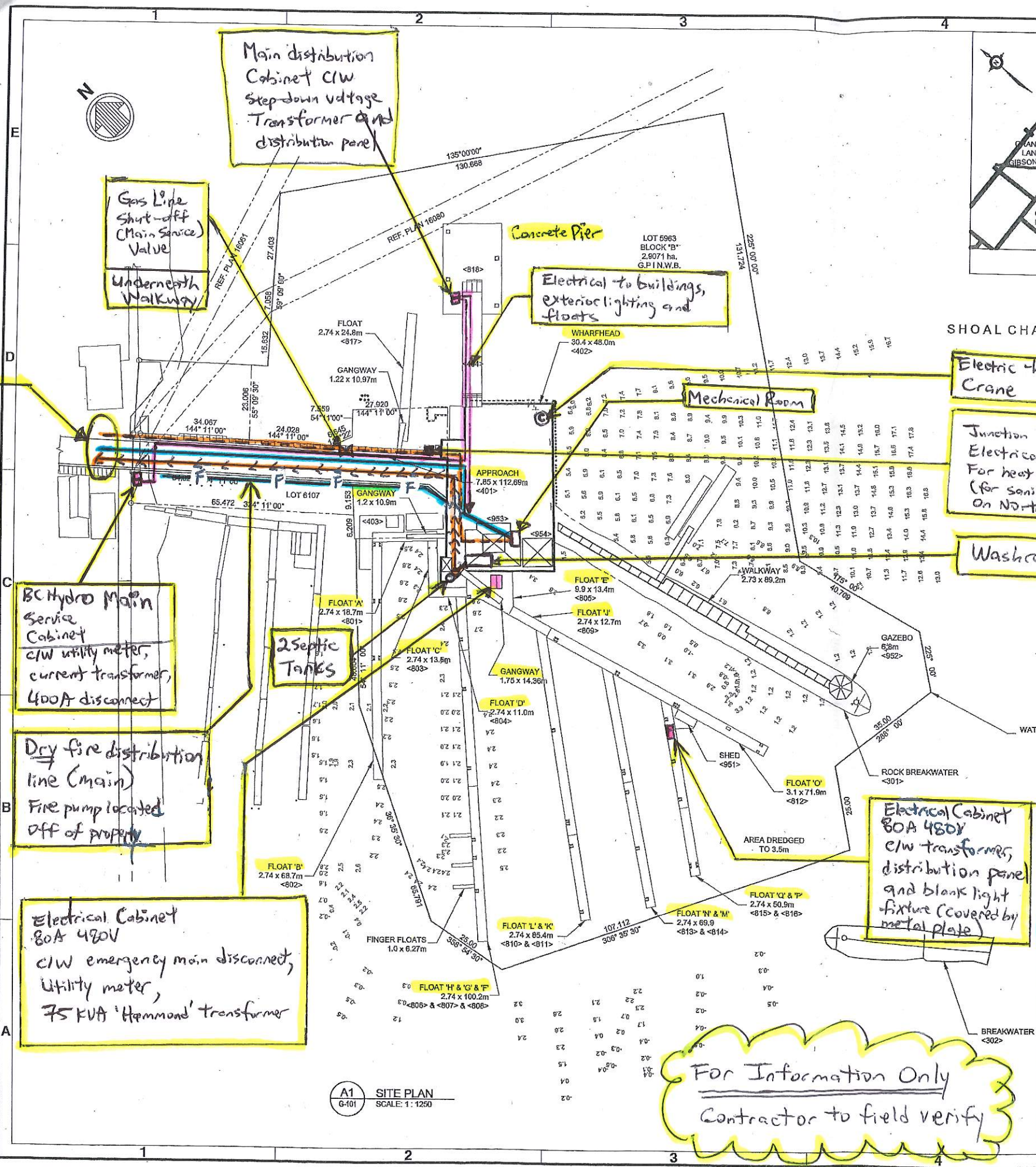
FISHERIES AND OCEANS CANADA
SMALL CRAFT HARBOURS BRANCH
PACIFIC DIVISION
GIBSONS HARBOUR RECONSTRUCTION
SITE PLAN

Rev.	Date	Description
01	2019/05/14	ISSUE FOR TENDER
02	2019/03/14	ISSUED FOR CLIENT REVIEW

General Utility
Layout Plan



Sheet Reference No.
G-101
INDEX: 3 OF 13



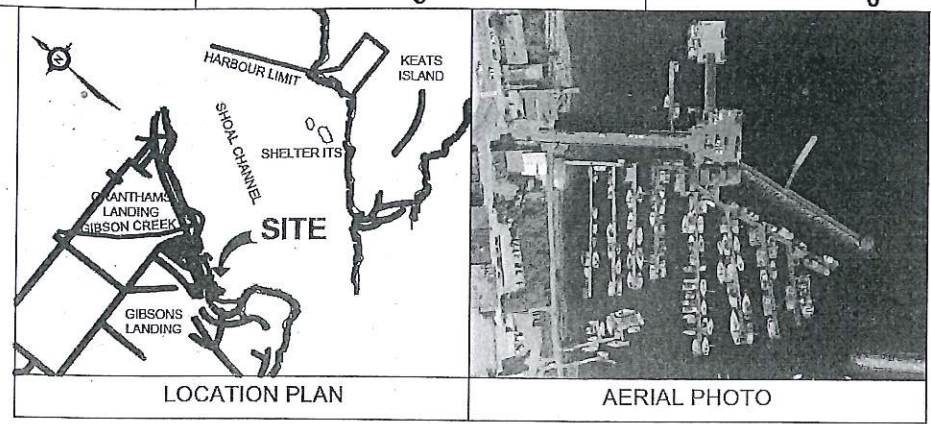
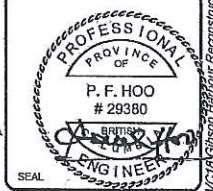
Main Office Mechanical Room Layout Details (NTS)

Rev.	Date	Description
01	2019-05-16	ISSUE FOR TENDER
02		ISSUE FOR CLIENT REVIEW

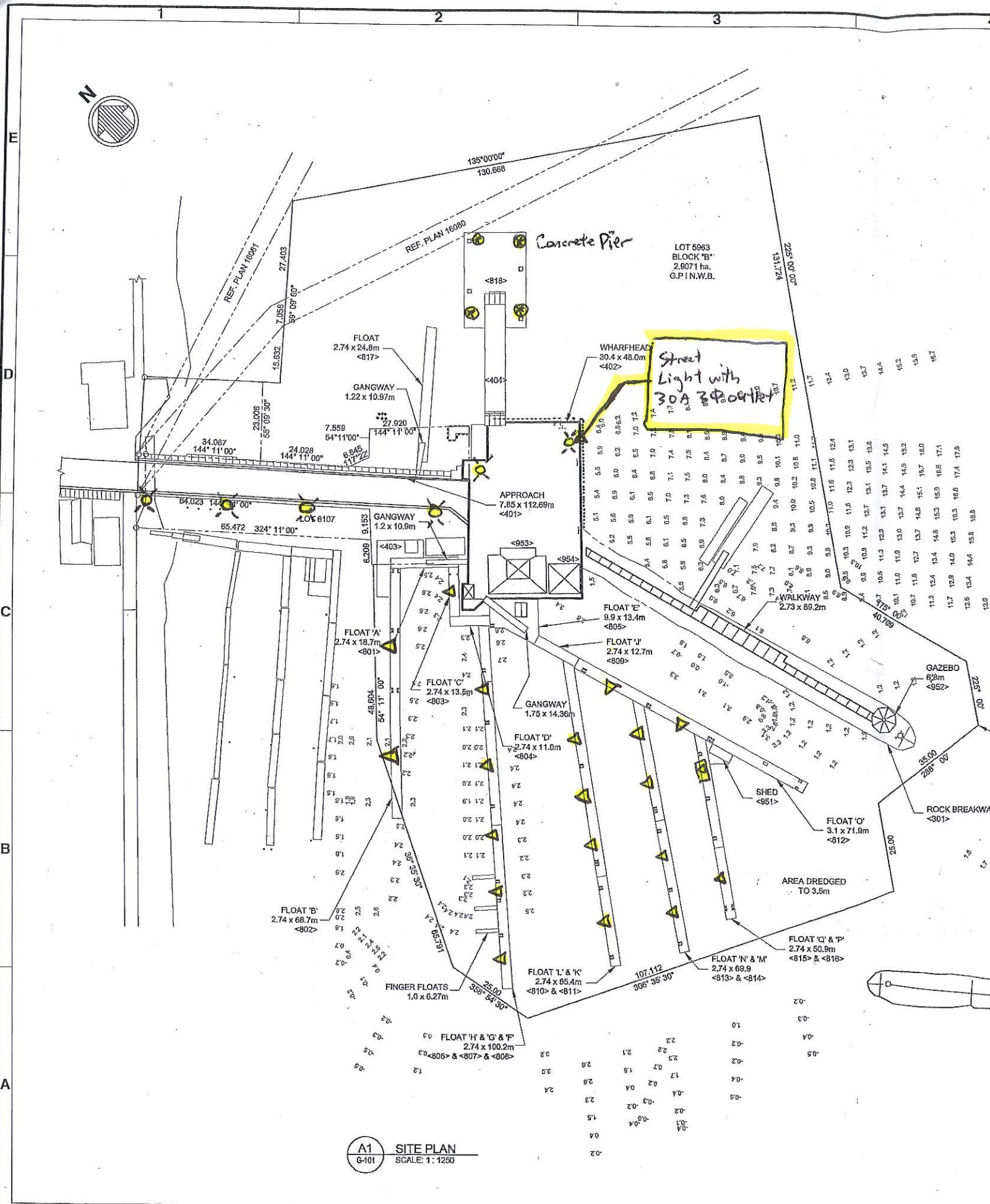
FISHERIES AND OCEANS CANADA
SMALL CRAFT HARBOURS BRANCH
PACIFIC DIVISION
GIBSONS HARBOUR RECONSTRUCTION
SITE PLAN

Designed by:	OP	Checked by:	PH	Reviewed by:	PH
Date:	2019-05-16	Drawn by:	GE	Drawn by:	PH
Project No.:	10281-01	Project No.:	10281-01	Project No.:	10281-01

Lighting



SHOAL CHANNEL



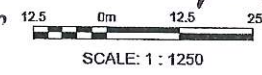
Street Light with 30A 3Φ0.4kV

For Information Only
Contractor to Verify
On site

- NOTE:**
- DEPTH SOUNDINGS REFERENCE - PUBLIC WORKS DRAWING - PROJECT 036957 - DREDGE SECTIONS 'A', 'B', AND 'C' AND FLOAT LAYOUT
 - BASE PLAN EXTRACTED FROM FISHERIES AND OCEANS CANADA SMALL CRAFT HARBOUR, DRAWING 001
 - DEPTH SOUNDINGS ARE REFERENCES TO CHART DATUM

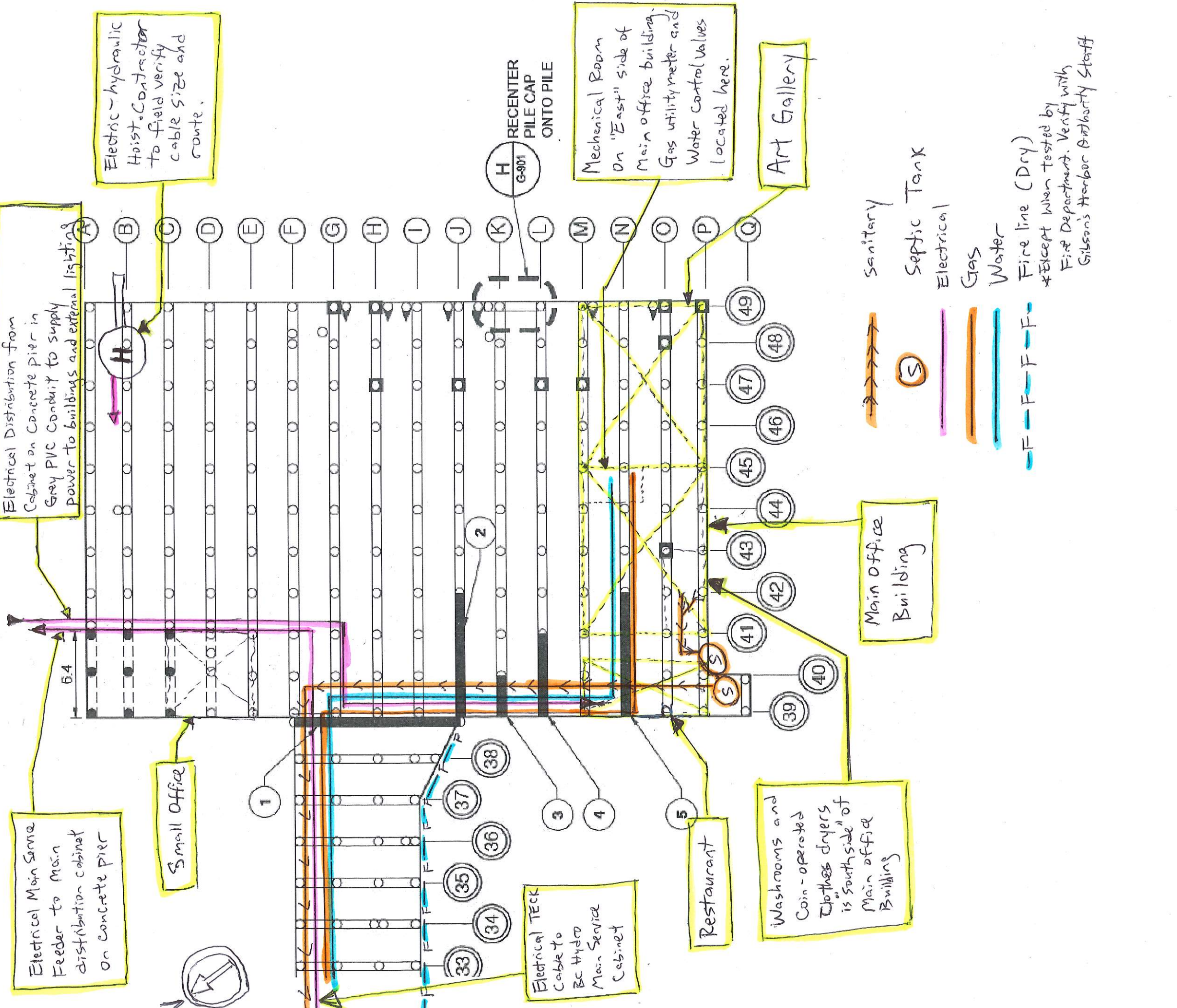
Legend:

- Guidance Lighting and Electric Outlets (15A, 30A) for boats c/w photoelectric eye (located on various floats)
- Guidance Lighting (Blank - covered with metal plate) c/w transformer and distribution panel
- Lighting bollard on concrete pier c/w 20A GFI and 50A outlets for boats



A1 SITE PLAN
SCALE: 1 : 1250

Street light pole



Electrical Distribution from Cabinet on Concrete pier in Gray PVC Conduit to supply power to buildings and external lighting

Electrical Main Service Feeder to Main distribution cabinet on concrete pier

Electric-hydraulic Hoist Contractor to field verify cable size and route.

Small Office



Electrical Teck Cable to BC Hydro Main Service Cabinet

Restaurant

Washrooms and Coin-operated Clothes Dryers is "southside" of Main office Building

Main Office Building

Art Gallery

H RECENTER PILE CAP ONTO PILE G-901

Mechanical Room On "East" side of Main office building. Gas utility meter and Water control valves located here.

- Sanitary
 - Septic Tank
 - Electrical
 - Gas
 - Water
 - Fire line (Dry)
- *Except when tested by Fire Department. Verify with Gibson's Harbor Authority Staff

Utilities Underneath Wharfedock (N.T.S.)

Base Drawing Taken from Drawing S-102
 (For Information Only - Contractor to Field Verify)

LEGEND:

- REPLACE PILE CAP/STRINGER SECTION
- NEW PILE CAPS
- NEWLY ADDED PILES

Existing Buildings

Notes:

- ① Electrical contractor to confirm wiring sizes, alignment and update distribution diagram. Latest available electrical drawings are E1 and E2 (1990 upgrade Mark-up drawing)
- ② Communication (Telus) cable to be field located. General cable alignment likely to be parallel with all other utilities along "northern" edge of approach.