


**RETURN BIDS TO:**
**RETOURNER LES SOUMISSIONS À:**

See Section 1.

Voir Section 1.

**STANDARD REQUEST FOR BID**
**INVITATION À SOUMISSIONNER - STANDARD**

The Bidder offers to provide to Canada the goods, services or both listed in the bid solicitation in accordance with the conditions set out in the bid solicitation and the prices set out in the bid. Bidders should ensure e-mail does not exceed 13 MB to avoid problems with transmission.

This bid solicitation is issued in accordance with the conditions of the Supply Arrangement E60PQ-140003/PQ.

Le soumissionnaire offre de fournir au Canada les biens, services ou les deux énumérés dans la demande de soumissions aux conditions prévues dans la demande de soumissions et aux prix indiqués dans la soumission. Les soumissionnaires doivent s'assurer que le courrier électronique ne dépasse pas 13 Mo pour éviter les problèmes avec transmission.

Cette demande de soumissions est émise conformément aux conditions de l'arrangement en matière d'approvisionnement E60PQ-140003/PQ.

<b>Solicitation No. - N° de la demande # 100019809</b>	<b>Amendment No. - N° de modification</b>
<b>Supplier SA No. - N° de l'AMA de fournisseur : E60PQ-140003/___</b>	

<b>Solicitation closes – La demande prend fin :</b>	<b>File No. - N° de dossier</b>
<b>at – à See Section 1 Voir Section 1</b>	
<b>on – le See Section 1 Voir Section 1</b>	

**Date of Solicitation – Date de la demande**

2022-01-07

**Address inquiries to – Adresser toute demande de renseignement à :**

See Section 2, Article 4.1.

Voir Section 2, Article 4.1

**Destination**

See Section 2, Annex A.

Voir Section 2, Annexe A.

**Instructions:**
**Municipal taxes are not applicable.**

**Unless otherwise specified in the bid solicitation, all prices quoted must be net prices in Canadian funds including Canadian customs duties, excise taxes, must be FOB, including all delivery charges to destination(s) as indicated. The amount for Applicable Taxes is to be shown as a separate item.**

**Instructions:**
**Les taxes municipales ne s'appliquent pas.**

**Sauf indication contraire dans la demande de soumissions, tous les prix indiqués doivent être des prix nets, en dollars canadiens, comprenant les droits de douane canadiens, la taxe d'accise et doivent être FAB, y compris tous frais de livraison à la (aux) destination(s) indiqué(s). Le montant des taxes applicables doit apparaître séparément.**

**Supplier Name and Address – Nom et adresse du fournisseur**

Telephone No. - N° de téléphone

Facsimile No. - N° de télécopieur

**Name and title of person authorized to sign on behalf of supplier (type or print)**
**Nom et titre de la personne autorisée à signer au nom du fournisseur (caractère d'impression)**

Signature : \_\_\_\_\_ Date : \_\_\_\_\_

## TABLE OF CONTENTS

Section 1 – Invitation and Instructions to Bidders

Section 2 – Resulting Contract including a list of required goods and services

### SECTION 1 – INVITATION AND INSTRUCTIONS TO BIDDERS

#### **Step 1. For Tier 2 and Tier 3 only (If Tier 1, skip this step and proceed with step 2)**

Is this a Manufacturer Product Specific Procurement?

#### **Step 2. Competitive or Non-Competitive**

For competitive Requirements when only one bid is received:

A bid must comply with the requirements of the bid solicitation and meet all mandatory technical evaluation criteria to be declared responsive. The responsive bid with the lowest evaluated price will be recommended for award of a contract.

For Competitive Requirements when only one bid is received:

The Bidder must provide the following information AFTER bid closing, if requested to do so by Canada:

- One or more of the following price justifications:
  1. a current published price list indicating the percentage discount available to Canada; or
  2. a copy of paid invoices for the like quality and quantity of the goods, services or both sold to other customers; or
  3. a price breakdown showing the cost of direct labour, direct materials, purchased items, engineering and plant overheads, general and administrative overhead, transportation, etc., and profit; or
  4. any other supporting documentation as requested by Canada.

For Non-Competitive Requirements:

The Bidder must provide the following information WITH the bid:

- One or more of the following price justifications:
  1. a current published price list indicating the percentage discount available to Canada; or
  2. a copy of paid invoices for the like quality and quantity of the goods, services or both sold to other customers; or
  3. a price breakdown showing the cost of direct labour, direct materials, purchased items, engineering and plant overheads, general and administrative overhead, transportation, etc., and profit; or
  4. any other supporting documentation as requested by Canada.

#### **Step 3. General or Procurement Strategy for Indigenous Business (PSIB)**

##### **Terms of the RFB:**

This RFB is issued pursuant to the Supplier's Furniture for Workspaces Supply Arrangement (SA) that forms part of the series of SAs issued by PWGSC with the number E60PQ-140003/PQ. The terms and conditions in the Supplier's SA apply to and form part of this RFB. Bidders who submit a bid agree to be bound by those terms and conditions as well as the terms and conditions in this RFB.

The WTCM is the Workspaces Terms and Conditions Manual that contains all terms and conditions in full text that form part of individual RFBs under this SA.

The Bidder must provide the following information WITH the bid:

- The information requested by Canada in Annex A herein.

<b>RFB Issued by:</b>	
Identified User's (IU) Department/Agency/Crown Corporation: Contact for this RFB:	See Section 2, article 4.1 below.
<b>RFB Closing - Submit Bid:</b>	
Bids must be submitted on the date and at the time indicated below.	
By no later than date and time:	a. <a href="#">2022-01-24</a> b. <a href="#">2:00 PM EST – standard time</a>
To e-mail address : <b>Bidders should ensure e-mails do not exceed 13 MB to avoid problems with transmission.</b>	<a href="mailto:NC-SOLICITATIONS-GD@hrsdc-rhdcc.gc.ca">NC-SOLICITATIONS-GD@hrsdc-rhdcc.gc.ca</a>
<b>RFB Enquiries</b>	
Unless a different period is listed in the adjacent column, Bidders may submit enquires about the RFB to the Contracting Authority two business days prior to the RFB closing date. Enquiries received after the timeline indicated may not be answered.	3 business days

## SECTION 2 - RESULTING CONTRACT CLAUSES

1.	<b>Terms and Conditions of the Contract</b> The terms and conditions of Parts 6B and 6C of the Supplier's SA within the series E60PQ-140003/PQ apply to and form part of this Contract.	
2.	<b>Security Requirement</b> (the checked article applies)	
2.1	The applicable security requirement(s) is (are) set out in the Security Requirement Check List attached as Annex B of this contract. The Contractor must fulfill the security requirements by meeting the terms below.	
a.	x	<b>Contractor may be escorted; possession of security clearance not required.</b> Contractor personnel MAY NOT ENTER NOR PERFORM WORK ON sites where PROTECTED or CLASSIFIED information or assets are kept, without an escort provided by the department or agency for which the work is being performed.
b.		<b>Possession of security clearance(s) is required.</b> The Contractor must meet the security clearance requirements contained in the clausing in Annex B herein.
c.		<b>There is no security requirement associated with this contract.</b>
3.	<b>Requirement</b>	
3.1	The Contractor must perform the Work listed in Annex A herein.	
4.	<b>Authorities</b>	
4.1	<b>Contracting Authority (IU)</b> Name: <b>Melissa Proulx</b> Title: <b>Procurement Specialist</b> Department/Agency/Crown Corporation: <b>Employment and Social Development Canada</b> Address: <b>Will be provided upon contract award</b> Telephone No.: <b>Will be provided upon contract award</b> E-mail address: <a href="mailto:nc-solicitations-gd@hrsdcc.gc.ca">nc-solicitations-gd@hrsdcc.gc.ca</a>	
4.2	<b>Project Authority Will be provided upon contract award</b> <i>The Project Authority (PA) is the representative of the department or agency for whom the Work is being carried out under the Contract including the provision to approve the authority to proceed for delivery and installation and is responsible for all matters concerning the technical content of the Work under the Contract.</i>  <i>In addition, the PA is also responsible for ensuring that the Supplier's employees and subcontractors requiring access to the site adhere to the allocated time for the Supplier to access the site to deliver and install the furniture in accordance with the master schedule held by the General Contractor (a representative of Canada or a service provider(s) under contract with the Government of Canada).</i> Name: Title: Department/Agency/Crown Corporation: Address: Telephone No.: E-mail address:	
4.3	<b>Contractor's Representative</b> As set out in Annex A, Table 9 below.	
5.	<b>Method of Payment</b> The checked box applies. If the Contractor's SA indicates acceptance for payment by credit card, that method may be used in conjunction with the following. <input type="checkbox"/> Single Payment <input checked="" type="checkbox"/> Multiple Payment	
6.	<b>Invoicing</b> Further to the Invoicing terms of the WTCM document, the Contractor will deliver the original and one copy of the invoice to the following address for certification and payment:	

	Name of the organization and contact: <b>Will be provided upon contract award</b>
	Address:
<b>7.</b>	<b>SACC Manual Clauses</b>
<b>New</b>	<b>A3080 - COVID-19 vaccination requirement</b>  This requirement is subject to the COVID-19 Vaccination Policy for Supplier Personnel. Failure to complete and provide the COVID-19 Vaccination Requirement Certification as part of the bid will render the bid non-responsive.
<b>New</b>	<b>A3081 - COVID-19 vaccination requirement certification</b>  In accordance with the COVID-19 Vaccination Policy for Supplier Personnel, all Bidders must provide with their bid, the <u>COVID-19 Vaccination Requirement Certification</u> attached to this bid solicitation, to be given further consideration in this procurement process. This Certification incorporated into the bid solicitation on its closing date is incorporated into, and forms a binding part of any resulting Contract.
<b>Supplemental General Conditions:</b>	
<b>*New</b>	<b>ID 4013</b> - Compliance with on-site measures, standing orders, policies, and rules apply to and form part of the Contract.
<b>*New</b>	<b>ID 4014</b> - Suspension of the work apply to and form part of the Contract.

**ANNEX A  
REQUIREMENT and BASIS OF PAYMENT**

1. Category Selection

<p><b>Combined Categories Rule:</b></p> <p>For reasons of compatibility, the following categories will be combined for evaluation and contract award purposes:</p> <p>The rule only applies to the categories below that are checked. The unchecked categories will be evaluated separately and may be awarded to multiple suppliers;</p> <p><input type="checkbox"/> <b>Category 1</b></p> <p><input type="checkbox"/> <b>Category 2</b></p> <p><input type="checkbox"/> <b>Category 5</b></p> <p><b>* Exception: when using the Cat 1, 2, 5 combined categories rule, IU's may calculate the percentage of NSA product allowed (as defined in their solicitation document) against the total quantity of the combined categories.</b></p>
<p><b>Design Upgrade Rule:</b></p> <p>The IU may exercise an option to upgrade products up to 20% of each Category product total before Applicable Taxes after contract award.</p> <p>The Design Upgrade amount is used at the discretion of the Project Authority (PA) <b>prior to the manufacturing/ordering of the products</b>, the PA will provide the Contractor with a written notice of Canada's Design Upgrade choices for each of the product(s) to be upgraded. The Contractor will provide the pricing of the upgraded product(s) to a maximum of 20% of each Category Contract Price of Table 8. The Contracting Authority will issue an amendment to the contract with the Design Upgrades and pricing.</p> <p>The Supplier certifies that all the Design Upgraded products offered will conform to all specifications and meet the testing requirements detailed in the Specifications of the Supply Arrangement.</p> <p>Design Upgrade: is the process of replacing a product with a more innovative or enhanced version of the same product.</p>
<p><b>NSA:</b></p> <p>NSA products can be incorporated in the RFB and must not exceed 30% of the firm quantity by category. NSA items must be added to the category that is most closely related and must be generic.</p>

The requirement includes the following category (ies) of work:

- a. Category 1 – Interconnecting Panels and Freestanding Systems
  - Category 1a – Interconnecting Panels (Refer to Annex C)
  - Category 1b – Supporting components and freestanding furniture

**RULE: Metal Storage**

Identified Users may procure metal storage products forming part of Category 1 when the metal storage products will be part of a requirement for a workstation(s)/work point(s). If this rule does not apply, Category 3 must be used for the metal storage products forming part of this category.

b.  Category 2 – Freestanding Height Adjustable Desk / Table Products

c.  Category 3 – Metal Filing and Storage Cabinets

Identifying the maximum height of the Personal Storage Towers, Wardrobes and Storage Cabinets is acceptable as per 6B. 4.1 of the SA (table 1 Additional product details)

d.  Category 4 – Wood Veneer – Freestanding Products

e.  Category 5 – Ancillary and Lighting Products

f.  Category 6 - Support Space – Collaborative Furniture

**RULE:** Category 6 can be further subdivided by space or like product in order to increase or allow competition. Space is defined as a location available for a particular purpose such as a meeting room space or a collaborative space. Like products are defined as products with similar design and construction. If NSA products form part of the requirement, the IU must validate the 30% NSA prior to subdividing the category. NSA products can be added to any subdivide or in its own subdivide.

The IU must identify how Category 6 will be subdivided in the Product Table for Category 6.

g.  NSA Product(s) – Category : 6

## 2. Product and Pricing Tables

**Site Inspection Date:** To be coordinated with Project Authority after contract award. (Refer to Annex A article 4 of the SA for Site Inspection and Documentation instructions.)

**INSTRUCTIONS TO BIDDERS:** Bidders are to complete Sections B of the tables identified by the IU in this article as well as Tables 8 and 9. **Bidders must provide a complete product offering for each category, or CAT 6 sub-divide they wish to submit a bid in order to be compliant.**

**\*\*Refer to article 6A.7 for instructions on how to submit products that are not approved in product listing.\*\***

In a resulting contract, the term “Bid” means the Supplier’s commitment, the term “Bidder” means “Contractor”.

**Product Category: 6**

Table 1 – Product Table

Section A - IU REQUIREMENT				Section B – SUPPLIER’S BID			
#	GoCUID	Description of Product (Additional product details may be inserted, if required as per 6B. 4.1 of the SA)	QTY	** Provide additional Information Yes/No	Supplier Part Number	Firm Unit Price \$	Extended Total [Qty x Price] \$
1	6MMTSMSQPL30L30WNNX	Conference room table – black base with locking casters; no power/data; no modesty panel; no grommets.	2	Yes		\$	\$
2	6MMTSMRELL30L48WNNX	Conference room table – four post legs; no power/data; no modesty panel; no grommets.	2	Yes		\$	\$
3	6MMTSMRELL30L54WNNX	Meeting room table – black base; no modesty panel; no grommets.	3	Yes		\$	\$
4	6MMTSMRELL30L54WNNX	Conference room table – four post legs; no power/data; no modesty panel; no grommets.	2	Yes		\$	\$
5	6MMTSMRELL30L60WNNX	Conference room table – four post legs; no power/data; no modesty panel; no grommets	1	Yes		\$	\$
6	6MMTMDREOL42L72WYXX	Meeting room table – black fixed base (preferably 2 pillars) – this table must be compatible with the three-seater banquettes 6SBATHXXLUW5G19L MNY on line A26 of this table, in order for these items to be placed together	1	Yes		\$	\$
7	6MTRXTRELL24L36WYYY	Fixed height table – no modesty panel; no power/data; maple top, black base.	1	Yes		\$	\$
8	6MTRXTRELL24L36WYYN	Training room table – no power/data; no modesty panel; no grommets; black base, maple fixed top.	2	Yes		\$	\$
9	6MTRXTRELL24L48WYYY	Training room table – no power/data; no modesty panel; no grommets; black base, maple fixed top.	2	Yes		\$	\$
10	6MTRXTRECL24L48WYYY	Gray base with locking casters; T-shaped base; no power/data; with modesty panel; no grommets. <u>Modesty panel for 48" wide table 6MTRXTRECL24L48WYYY</u> - the modesty panels' cost should be included with the appropriate table.	8	Yes		\$	\$



11	6MTRXTRECL24L48WYYY	Black base with locking casters; T-shaped base; no power/data; no modesty panel; no grommets.	1	Yes		\$	\$
12	6MTRXTRECL30L36WYYY	Training room table – no grommets; no modesty panel; no wire trays; no grommets; black base and maple top.	2	Yes		\$	\$
13	6MTRFTRECL24L48WYYY	Maple top, black base ; locking casters; T-shaped base; flip top; no grommets; no wire tray; with modesty panel, <u>Modesty panel for 48" wide flip top table 6MTRFTRECL24L48WYYY</u> the modesty panels' cost should be included with the appropriate table.	8	Yes		\$	\$
14	6MTRFTRECL30L60WYYY	Fixed height table – no power/data; with modesty panel; with locking casters; flip top; no grommets; maple top and black base. <u>Modesty panel for 60" wide flip top table 6MTRFTRECL30L60WYYY</u> - the modesty panels' cost should be included with the appropriate table.	38	Yes		\$	\$
15	6MTRFTRECL30L60WYYY	Fixed height table – with locking casters; flip top; no modesty panel; no power/data; no grommets; Y-shaped base; maple top and black base	6	Yes		\$	\$
16	6CCTVAROLL36XXXJNXX	Side table for collaborative space – 36" diameter; 20" high; 4 black post legs and maple top.	1	Yes		\$	\$
17	6CCMVAROPL30XXXPNXX	High kitchenette table – 42" high; white top and fixed white base	2	Yes		\$	\$
18	6CCMVAROPL30XXXPNXX	High table for kitchenette – 42" high; white top and silver fixed base. Similar to image below	2	Yes		\$	\$
19	6CMUHARERL42120XYXX	Electric height adjustable table with screen mount; white top; with grommets; no modesty panel; no wire tray	1	Yes		\$	\$

20	6ZFHLXX24L48HSDSDSX	On locking casters with retractable surfaces and drawers. 24" deep by 48" wide by 34" high.	6	Yes		\$	\$
21	6SBBINXXBUW1G19LMYN	Individual banquette without armrests; with legs. Firm seat – seat and backrest in different colors	4	Yes		\$	\$
22	6SBAINXXLUW1G19LMNY	Firm seat – seat and backrest in different colors. Must match with the three-seater 6SBBTHXXLUW5G19LMYN on line 25 in this table.	2	Yes		\$	\$
23	6SBBTWXXLUW3G19LMYN	Two-seater banquette without armrests, with legs. Firm seat – seat and backrest in different colors.	4	Yes		\$	\$
24	6SBBTHXXLUW5G19LMYN	Three-seater banquette without armrests, with legs. Firm seat – seat and backrest in different colors	2	Yes		\$	\$
25	6SBBTHXXBUW5G19LMYN	Firm seat – seat and backrest in different colors. Must match with both one seaters 6SBBTHXXLUW5G19LMYN on line 22 of this table	1	Yes		\$	\$
26	6SBATHXXLUW5G19LMNN	Color TBD – fixed black legs without casters – these banquettes must be compatible with the 6MMTMDREOL42L72W YNX table on line 6 in this table for these items to be placed together.	2	Yes		\$	\$
27	6SLCWAXXWUXXXXXMXXX	Rest area lounge chair with armrests; pivoting base; with assorted footrest.	3	Yes		\$	\$
28	6STCWRXXLUXXXXXXNNX	Firm seat – backrest and seat in different colors – with 4 casters.	3	Yes		\$	\$
29	6STCWLXXLUXXXXXXNNX	Firm seating – backrest and seat in different colors – with 4 casters	3	Yes		\$	\$
30	6SUCROXXLUX8XXLXXX	Soft seating round stool 16"-18" diameter with 8" casters. The casters must not protrude from underneath the seat. Present at least 2 color choices	30	Yes		\$	\$
31	6SUCROXXLUX8XXLXXX	24" diameter; color to be determined	6	Yes		\$	\$

32	6KBSBHXXLY15XXXRONX	No armrests, gray base, black surface, 30" high	4	Yes		\$	\$
33	6KKCSAxxLY16XXXMINX	Cafeteria chair with casters	20	Yes		\$	\$
34	6KKCSAxxLY16XXXMONX	Cafeteria chair without casters; stackable; no armrests; chrome/silver base, color to be determined	8	Yes		\$	\$
35	6KKCSAxxLY16XXXMONX	Cafeteria chair with casters	20	Yes		\$	

**\*\*Provide additional information:**

Canada is requesting bidders to provide drawings and/or pictures including descriptive literature for these products with your bid submission.

Please see Annex "C" for additional product details

**NSA products**

The Supplier signs, and certifies that all the NSA products offered will conform to all specifications and meet the testing requirements detailed at Annex D.

Section A - IU REQUIREMENT			Section B – SUPPLIER'S BID			
#	NON-SA Product(s)	QTY	** Provide additional Information Yes/No	Supplier Part Number	Firm Unit Price \$	Extended Total [Qty x Price] \$
36	Rectangular meeting room table; 2 pedestal post base; laminate surface; 30" deep x 63" wide x 29" high. No power/data; no modesty panel; no casters. Closest GoCUID to this item: 6MMTMDREOL30L66WYNX	3	Yes			
37	Training room table – rectangular; laminate surface; with post legs; with locking casters – 24" deep x 48" wide x 29" high. Closest GoCUID to this item: 6MTRXTRELL24L48WYYY	20	Yes			
38	Training room table – rectangular; laminate surface; with locking casters – 30" deep x 36" wide x 29" high. Closest GoCUID to this item: 6MTRXTRELL30L36WYYY	20	Yes		\$	\$
				Product Total	\$	\$

**Table 2 - Delivery**

Section A - IU REQUIREMENT				Section B – SUPPLIER'S BID	
Product Item # from Table 1	Location	Desired Date** (Y/M/D)	Desired Time: Normal Business Hours Or Outside Normal Business Hours *	Supplier will supply and deliver as per below**	Firm Lot Price \$
1, 6, 11, 13, 15, 16, 18, 26, 32  (27 items to be delivered)	5935, des Grandes-Prairies Blvd, Saint-Léonard (Montreal), QC, H1R 1A9	January 31 2022	Normal Business Hours (to be determined with project contact)	____ : weeks  <i>Standard Lead time is between 6-10 weeks for furniture delivery and installation.</i>	\$
2, 4, 5, 7, 9, 14, 20, 21, 22, 23, 24, 25, 27, 28, 29, 30, 33, 35, 37, 38  (180 items to be delivered)	Centre de Traitement Service Canada de Boucherville 540 boulevard D'Avaugour, Suite 201 Boucherville, Québec J4B 0G6	January 31 2022	Normal Business Hours (to be determined with project contact)	____ : weeks  <i>Standard Lead time is between 6-10 weeks for furniture delivery and installation.</i>	\$
3, 8, 10, 12, 14, 17, 19, 31, 34, 36  (39 items to be delivered)	2276 Autoroute Chomedey Ouest, Unités # 200A-200D Sainte-Dorothée, Québec H7X 4C9	January 31 2022	Normal Business Hours (to be determined with project contact)	____ : weeks  <i>Standard Lead time is between 6-10 weeks for furniture delivery and installation.</i>	\$
<p>*Normal Business Hours 8:00 – 17:00, as per SA, Annex A, article 5</p> <p>**The Project Authority (PA) will provide the supplier the authority to proceed prior to the finalized delivery date taking into consideration the delivery time provided by the supplier. Canada will not be responsible if the supplier chooses to proceed without the PA authorization.</p>				Delivery Total:	\$

**Table 3 – Installation**

Section A - IU REQUIREMENT				Section B – SUPPLIER'S BID	
Product Item # from Table 1	Location	Desired Date** (Y/M/D)	Desired Time: Normal Business Hours Or Outside Normal Business Hours *	Supplier will install as per below**	Firm Lot Price \$
1, 6, 11, 13, 15, 16, 18, 26, 32  (27 items to be delivered)	Service Canada Center 5935, des Grandes-Prairies Blvd, Saint-Léonard (Montreal), QC, H1R 1A9	January 31 2022	Normal Business Hours (to be determined with project contact )	_____ : weeks from date of supply and delivery  <i>Standard Lead time is between 6-10 weeks for furniture delivery and installation.</i>	\$
2, 4, 5, 7, 9, 14, 20, 21, 22, 23, 24, 25, 27, 28, 29, 30, 33, 35, 37, 38  (180 items to be delivered)	Service Canada Processing Center 540 boulevard D'Avaugour, Suite 201 Boucherville, Québec J4B 0G6	January 31 2022	Normal Business Hours (to be determined with project contact)	_____ : weeks from date of supply and delivery  <i>Standard Lead time is between 6-10 weeks for furniture delivery and installation.</i>	\$
3, 8, 10, 12, 14, 17, 19, 31, 34, 36  (39 items to be delivered)	Service Canada Center 2276 Autoroute Chomedey Ouest, Unités # 200A-200D Sainte-Dorothée, Québec H7X 4C9	January 31 2022	Normal Business Hours (to be determined with project contact) Same as delivery date	_____ : weeks from date of supply and delivery  <i>Standard Lead time is between 6-10 weeks for furniture delivery and installation.</i>	\$
*Normal Business Hours 8:00 – 17:00, as per SA, Annex A, article 5  **The Project Authority (PA) will provide the supplier the authority to proceed prior to the finalized installation date taking into consideration the installation time provided by the supplier. Canada will not be responsible if the supplier chooses to proceed without the PA authorization.				Installation Total:	\$

**Table 4 – Optional Product**  Not Applicable

**Table 5 – Optional Delivery**  Not Applicable

**Table 6 – Optional Installation**  Not Applicable

**Table 7 – Standard Finishes and Canada’s Facilities to Accommodate the Delivery and Certifications**

<b>1.</b>	<b>Standard Finishes</b>	
1.1	<p>IU is to consult the Supplier’s Website identified in Part 6A of the SA to view the available finishes.</p> <p>Within ten business days of the contract award, the Project Authority will provide the Contractor with a written notice of Canada’s finish choices for each of the product(s) in Annex A.</p> <p>The Contractor will deliver the products corresponding to Canada’s choice of specific finishes(s). No additional charge will be applied to Canada.</p>	
<b>2.</b>	<b>Canada’s Facilities to Accommodate the Delivery</b>	
	<p><i>The Supplier’s employees and subcontractors requiring access to the site must adhere to the health and safety plans established for the site, in addition to any laws in effect in the jurisdiction where the work is being performed.</i></p> <p><i>During the period of the contract, a representative of Canada or a service provider(s) under contract with the Government of Canada may request the list of employees and subcontractors requiring access to the site to perform the work and their security statuses. Information must be provided in the timeframe prescribed in order to ensure that the supply, delivery and installation of the furniture aligns with the master schedule.</i></p>	
2.1	Loading Dock/Location	
A	Location	Please refer to Annex “F” for location specific details
B	Dock	Please refer to Annex “F” for location specific details
C	Lift	Please refer to Annex “F” for location specific details
D	Door	Please refer to Annex “F” for location specific details
E	Freight Elevator	Please refer to Annex “F” for location specific details
F	Other (specify, if any)	Please refer to Annex “F” for location specific details
<b>3.</b>	<b>Continuance of Certifications</b>	
	<p>The Bidder certifies that by submitting a bid in response to the RFB, the Bidder, and any of the Bidder’s members if the Bidder is a Joint Venture, continues to comply with all of the following certifications listed in Parts 6A and 6B of the Bidder’s SA for Work Spaces.</p> <p>Canada may request copies of environmental certification(s) prior to contract award within a time period specified by the Identified User.</p>	
3.1	Integrity Provisions	
3.2	Federal Contractor’s Program for Employment Equity	
3.4	Product Conformance	
3.5	Price Certification (In accordance with the SA, Part 6B)	

**Table 8 - Bid Evaluation and Contract Total (Canada may complete if not completed by the Bidder)**

1	<b>Firm Product Total (Table 1)</b>	\$
2	<b>Firm Delivery Total (Table 2)</b>	\$
3	<b>Firm Installation Total (Table 3)</b>	\$
4	<b>Optional Product Total (Table 4)</b>	\$
5	<b>Optional Delivery Total (Table 5)</b>	\$
6	<b>Optional Installation Total (Table 6)</b>	\$
7	Hardware Total as per article 1.5 of Annex A-1 of SA	\$
8	<b>Total Evaluated (Bid) Price* (1 + 2 + 3 + 4 + 5 + 6+ 7)</b>	\$
9	<b>Contract Price(1+2+3+7):</b>	\$
10	<b>Applicable Tax(es):</b>	\$
11	<b>Total Estimated Cost (9+10):</b>	\$

\* Applicable taxes extra.

**Table 9 – Bidder’s Authorized Representative**

1.	Bidder’s Authorized Representative for the Bid and the Contract	
	Name:	Telephone:
		E-Mail:
		PBN:

**ANNEX B**  
**SECURITY REQUIREMENTS**

A. The security requirements set out in the attached Security Requirements Check List (SRCL) apply to and form part of the Contract.





Contract Number / Numéro du contrat
Security Classification / Classification de sécurité UNCLASSIFIED

**SECURITY REQUIREMENTS CHECK LIST (SRCL)  
LISTE DE VÉRIFICATION DES EXIGENCES RELATIVES À LA SÉCURITÉ (LVERS)**

**PART A - CONTRACT INFORMATION / PARTIE A - INFORMATION CONTRACTUELLE**

1. Originating Government Department or Organization / Ministère ou organisme gouvernemental d'origine <b>EDSC</b>	2. Branch or Directorate / Direction générale ou Direction DG du Dirigeant Principal des Finances
3. a) Subcontract Number / Numéro du contrat de sous-traitance	3. b) Name and Address of Subcontractor / Nom et adresse du sous-traitant

4. Brief Description of Work / Brève description du travail  
Achat, livraison et installation de mobilier de catégorie 6 sur l'AMA pour plusieurs sites CSC et CT.

5. a) Will the supplier require access to Controlled Goods?  
Le fournisseur aura-t-il accès à des marchandises contrôlées?  No / Non  Yes / Oui

5. b) Will the supplier require access to unclassified military technical data subject to the provisions of the Technical Data Control Regulations?  
Le fournisseur aura-t-il accès à des données techniques militaires non classifiées qui sont assujetties aux dispositions du Règlement sur le contrôle des données techniques?  No / Non  Yes / Oui

6. Indicate the type of access required / Indiquer le type d'accès requis

6. a) Will the supplier and its employees require access to PROTECTED and/or CLASSIFIED information or assets?  
Le fournisseur ainsi que les employés auront-ils accès à des renseignements ou à des biens PROTÉGÉS et/ou CLASSIFIÉS?  
(Specify the level of access using the chart in Question 7. c)  
(Préciser le niveau d'accès en utilisant le tableau qui se trouve à la question 7. c)  No / Non  Yes / Oui

6. b) Will the supplier and its employees (e.g. cleaners, maintenance personnel) require access to restricted access areas? No access to PROTECTED and/or CLASSIFIED information or assets is permitted.  
Le fournisseur et ses employés (p. ex. nettoyeurs, personnel d'entretien) auront-ils accès à des zones d'accès restreintes? L'accès à des renseignements ou à des biens PROTÉGÉS et/ou CLASSIFIÉS n'est pas autorisé.  No / Non  Yes / Oui

6. c) Is this a commercial courier or delivery requirement with **no** overnight storage?  
S'agit-il d'un contrat de messagerie ou de livraison commerciale **sans** entreposage de nuit?  No / Non  Yes / Oui

7. a) Indicate the type of information that the supplier will be required to access / Indiquer le type d'information auquel le fournisseur devra avoir accès

Canada <input type="checkbox"/>	NATO / OTAN <input type="checkbox"/>	Foreign / Étranger <input type="checkbox"/>
---------------------------------	--------------------------------------	---

7. b) Release restrictions / Restrictions relatives à la diffusion

No release restrictions Aucune restriction relative à la diffusion <input checked="" type="checkbox"/>	All NATO countries Tous les pays de l'OTAN <input type="checkbox"/>	No release restrictions Aucune restriction relative à la diffusion <input type="checkbox"/>
Not releasable À ne pas diffuser <input type="checkbox"/>	Restricted to: / Limité à : <input type="checkbox"/>	Restricted to: / Limité à : <input type="checkbox"/>
Specify country(ies): / Préciser le(s) pays :	Specify country(ies): / Préciser le(s) pays :	Specify country(ies): / Préciser le(s) pays :

7. c) Level of information / Niveau d'information

PROTECTED A PROTÉGÉ A <input type="checkbox"/>	NATO UNCLASSIFIED NATO NON CLASSIFIÉ <input type="checkbox"/>	PROTECTED A PROTÉGÉ A <input type="checkbox"/>
PROTECTED B PROTÉGÉ B <input type="checkbox"/>	NATO RESTRICTED NATO DIFFUSION RESTREINTE <input type="checkbox"/>	PROTECTED B PROTÉGÉ B <input type="checkbox"/>
PROTECTED C PROTÉGÉ C <input type="checkbox"/>	NATO CONFIDENTIAL NATO CONFIDENTIEL <input type="checkbox"/>	PROTECTED C PROTÉGÉ C <input type="checkbox"/>
CONFIDENTIAL CONFIDENTIEL <input type="checkbox"/>	NATO SECRET NATO SECRET <input type="checkbox"/>	CONFIDENTIAL CONFIDENTIEL <input type="checkbox"/>
SECRET SECRET <input type="checkbox"/>	COSMIC TOP SECRET COSMIC TRÈS SECRET <input type="checkbox"/>	SECRET SECRET <input type="checkbox"/>
TOP SECRET TRÈS SECRET <input type="checkbox"/>		TOP SECRET TRÈS SECRET <input type="checkbox"/>
TOP SECRET (SIGINT) TRÈS SECRET (SIGINT) <input type="checkbox"/>		TOP SECRET (SIGINT) TRÈS SECRET (SIGINT) <input type="checkbox"/>



Contract Number / Numéro du contrat
Security Classification / Classification de sécurité UNCLASSIFIED

**PART A (continued) / PARTIE A (suite)**

8. Will the supplier require access to PROTECTED and/or CLASSIFIED COMSEC information or assets?  
Le fournisseur aura-t-il accès à des renseignements ou à des biens COMSEC désignés PROTÉGÉS et/ou CLASSIFIÉS?  No / Non  Yes / Oui  
If Yes, indicate the level of sensitivity:  
Dans l'affirmative, indiquer le niveau de sensibilité :

9. Will the supplier require access to extremely sensitive INFOSEC information or assets?  
Le fournisseur aura-t-il accès à des renseignements ou à des biens INFOSEC de nature extrêmement délicate?  No / Non  Yes / Oui

Short Title(s) of material / Titre(s) abrégé(s) du matériel :  
Document Number / Numéro du document :

**PART B - PERSONNEL (SUPPLIER) / PARTIE B - PERSONNEL (FOURNISSEUR)**

10. a) Personnel security screening level required / Niveau de contrôle de la sécurité du personnel requis

<input checked="" type="checkbox"/> RELIABILITY STATUS COTE DE FIABILITÉ	<input type="checkbox"/> CONFIDENTIAL CONFIDENTIEL	<input type="checkbox"/> SECRET SECRET	<input type="checkbox"/> TOP SECRET TRÈS SECRET
<input type="checkbox"/> TOP SECRET-SIGINT TRÈS SECRET - SIGINT	<input type="checkbox"/> NATO CONFIDENTIAL NATO CONFIDENTIEL	<input type="checkbox"/> NATO SECRET NATO SECRET	<input type="checkbox"/> COSMIC TOP SECRET COSMIC TRÈS SECRET
<input type="checkbox"/> SITE ACCESS ACCÈS AUX EMBLEMES			

Special comments:  
Commentaires spéciaux : \_\_\_\_\_

NOTE: If multiple levels of screening are identified, a Security Classification Guide must be provided.  
REMARQUE : Si plusieurs niveaux de contrôle de sécurité sont requis, un guide de classification de la sécurité doit être fourni.

10. b) May unscrined personnel be used for portions of the work?  
Du personnel sans autorisation sécuritaire peut-il se voir confier des parties du travail?  No / Non  Yes / Oui  
If Yes, will unscrined personnel be escorted?  
Dans l'affirmative, le personnel en question sera-t-il escorté?  No / Non  Yes / Oui

**PART C - SAFEGUARDS (SUPPLIER) / PARTIE C - MESURES DE PROTECTION (FOURNISSEUR)**

**INFORMATION / ASSETS / RENSEIGNEMENTS / BIENS**

11. a) Will the supplier be required to receive and store PROTECTED and/or CLASSIFIED information or assets on its site or premises?  
Le fournisseur sera-t-il tenu de recevoir et d'entreposer sur place des renseignements ou des biens PROTÉGÉS et/ou CLASSIFIÉS?  No / Non  Yes / Oui

11. b) Will the supplier be required to safeguard COMSEC information or assets?  
Le fournisseur sera-t-il tenu de protéger des renseignements ou des biens COMSEC?  No / Non  Yes / Oui

**PRODUCTION**

11. c) Will the production (manufacture, and/or repair and/or modification) of PROTECTED and/or CLASSIFIED material or equipment occur at the supplier's site or premises?  
Les installations du fournisseur serviront-elles à la production (fabrication et/ou réparation et/ou modification) de matériel PROTÉGÉ et/ou CLASSIFIÉ?  No / Non  Yes / Oui

**INFORMATION TECHNOLOGY (IT) MEDIA / SUPPORT RELATIF À LA TECHNOLOGIE DE L'INFORMATION (TI)**

11. d) Will the supplier be required to use its IT systems to electronically process, produce or store PROTECTED and/or CLASSIFIED information or data?  
Le fournisseur sera-t-il tenu d'utiliser ses propres systèmes informatiques pour traiter, produire ou stocker électroniquement des renseignements ou des données PROTÉGÉS et/ou CLASSIFIÉS?  No / Non  Yes / Oui

11. e) Will there be an electronic link between the supplier's IT systems and the government department or agency?  
Disposera-t-on d'un lien électronique entre le système informatique du fournisseur et celui du ministère ou de l'agence gouvernementale?  No / Non  Yes / Oui



Contract Number / Numéro du contrat
Security Classification / Classification de sécurité UNCLASSIFIED

**PART D - AUTHORIZATION / PARTIE D - AUTORISATION**

<b>13. Organization Project Authority / Chargé de projet de l'organisme</b>			
Name (print) - Nom (en lettres moulées) Jacinte Menard		Title - Titre Gestionnaire principale - GIBR	Signature Menard, Jacinte
<small>Signé numériquement par Menard, Jacinte DN: C=CA, O=GC, OU=HRSDC-RHDCC, CN=Menard, Jacinte Raison: J'approuve ce document Emplacement: l'emplacement de votre signature ici Date: 2021.12.23 09:30:25-05'00' Foxit PDF Editor Version: 11.1.0</small>			
Telephone No. - N° de téléphone 438-334-8832	Facsimile No. - N° de télécopieur	E-mail address - Adresse courriel jacinte.j.menard@hrsdcc.gc.ca	Date
<b>14. Organization Security Authority / Responsable de la sécurité de l'organisme</b>			
Name (print) - Nom (en lettres moulées) Naomi Statkewich		Title - Titre Gestionnaire intégrité interne, sécur urg	Signature Statkewich, Naomi
<small>Signature numérique de Statkewich, Naomi Date: 2021.12.24 12:04:56 -05'00'</small>			
Telephone No. - N° de téléphone 514 886 9777	Facsimile No. - N° de télécopieur	E-mail address - Adresse courriel naomi.statkewich@servicecanada.gc.ca	Date
<b>15. Are there additional instructions (e.g. Security Guide, Security Classification Guide) attached?</b> Des instructions supplémentaires (p. ex. Guide de sécurité, Guide de classification de la sécurité) sont-elles jointes?			
			<input type="checkbox"/> No Non
			<input type="checkbox"/> Yes Oui
<b>16. Procurement Officer / Agent d'approvisionnement</b>			
Name (print) - Nom (en lettres moulées) Melissa Proulx		Title - Titre Procurement Specialist	Signature Proulx, Melissa
<small>Digitally signed by Proulx, Melissa DN: C=CA, O=GC, OU=HRSDC-RHDCC, CN=Proulx, Melissa Reason: I am the author of this document Location: your signing location here Date: 2022.01.05 13:41:55-05'00' Foxit PDF Editor Version: 11.1.0</small>			
Telephone No. - N° de téléphone 819-230-5538	Facsimile No. - N° de télécopieur	E-mail address - Adresse courriel melissa.proulx@hrsdcc.gc.ca	Date January 5, 2022
<b>17. Contracting Security Authority / Autorité contractante en matière de sécurité</b>			
Name (print) - Nom (en lettres moulées)		Title - Titre	Signature
Telephone No. - N° de téléphone	Facsimile No. - N° de télécopieur	E-mail address - Adresse courriel	Date



Contract Number / Numéro du contrat
Security Classification / Classification de sécurité UNCLASSIFIED

**PART C - (continued) / PARTIE C - (suite)**

For users completing the form **manually** use the summary chart below to indicate the category(ies) and level(s) of safeguarding required at the supplier's site(s) or premises.

Les utilisateurs qui remplissent le formulaire **manuellement** doivent utiliser le tableau récapitulatif ci-dessous pour indiquer, pour chaque catégorie, les niveaux de sauvegarde requis aux installations du fournisseur.

For users completing the form **online** (via the Internet), the summary chart is automatically populated by your responses to previous questions.

Dans le cas des utilisateurs qui remplissent le formulaire **en ligne** (par Internet), les réponses aux questions précédentes sont automatiquement saisies dans le tableau récapitulatif.

**SUMMARY CHART / TABLEAU RÉCAPITULATIF**

Category / Catégorie	PROTECTED / PROTÉGÉ			CLASSIFIED / CLASSIFIÉ			NATO				COMSEC					
	A	B	C	CONFIDENTIAL / CONFIDENTIEL	SECRET	TOP SECRET / TRÈS SECRET	NATO RESTRICTED / NATO DIFFUSION RESTREINTE	NATO CONFIDENTIAL / NATO CONFIDENTIEL	NATO SECRET	COSMIC TOP SECRET / COSMIC TRÈS SECRET	PROTECTED / PROTÉGÉ			CONFIDENTIAL / CONFIDENTIEL	SECRET	TOP SECRET / TRÈS SECRET
											A	B	C			
Information / Assets / Renseignements / Biens / Production																
IT Media / Support TI																
IT Link / Lien électronique																

12. a) Is the description of the work contained within this SRCL PROTECTED and/or CLASSIFIED?  
La description du travail visé par la présente LVERS est-elle de nature PROTÉGÉE et/ou CLASSIFIÉE?

No / Non       Yes / Oui

**If Yes, classify this form by annotating the top and bottom in the area entitled "Security Classification".  
Dans l'affirmative, classifiez le présent formulaire en indiquant le niveau de sécurité dans la case intitulée « Classification de sécurité » au haut et au bas du formulaire.**


12. b) Will the documentation attached to this SRCL be PROTECTED and/or CLASSIFIED?  
La documentation associée à la présente LVERS sera-t-elle PROTÉGÉE et/ou CLASSIFIÉE?

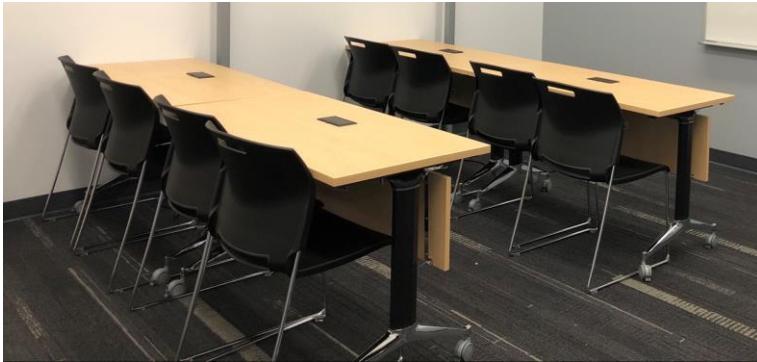
No / Non       Yes / Oui



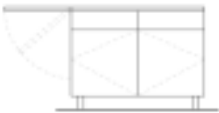
**If Yes, classify this form by annotating the top and bottom in the area entitled "Security Classification" and indicate with attachments (e.g. SECRET with Attachments).  
Dans l'affirmative, classifiez le présent formulaire en indiquant le niveau de sécurité dans la case intitulée « Classification de sécurité » au haut et au bas du formulaire et indiquer qu'il y a des pièces jointes (p. ex. SECRET avec des pièces jointes).**

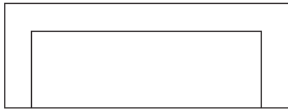

**ANNEX C  
ADDITIONAL PRODUCT DETAILS**

**Table listing of items**

Line	Qty	Item description and GoCUID
<b>Meeting-Training Room Tables</b>		
A01	2	GoCUID : 6MMTSMRQPL30L30WNNX Conference room table – black base with locking casters; no power/data; no modesty panel; no grommets.
A02	2	GoCUID : 6MMTSMRELL30L48WNNX Conference room table – four post legs; no power/data; no modesty panel; no grommets.
A03	3	GoCUID : 6MMTSMRELL30L54WNNX Meeting room table – black base; no modesty panel; no grommets.
A04	2	GoCUID : 6MMTSMRELL30L54WNNX Conference room table – four post legs; no power/data; no modesty panel; no grommets.
A05	1	GoCUID : 6MMTSMRELL30L60WNNX Conference room table – four post legs; no power/data; no modesty panel; no grommets.
A06	1	GoCUID : 6MMTMDREOL42L72WYNNX Meeting room table – black fixed base (preferably 2 pillars) without casters, without grommets and without modesty panel – this table must be compatible with the three-seater banquettes 6SBATHXXLUW5G19LMNY on line A26 of this table, in order for these items to be placed together. Similar to this image:
		
A07	1	GoCUID : 6MTRXTRELL24L36WYYY Fixed height table – no modesty panel; no power/data; maple top, black base.
A08	2	GoCUID : 6MTRXTRELL24L36WYYN Training room table – no power/data; no modesty panel; no grommets; black base, maple fixed top.
A09	2	GoCUID : 6MTRXTRELL24L48WYYY

Line	Qty	Item description and GoCUID
		Training room table – no power/data; no modesty panel; no grommets; black base, maple fixed top.
A10	8	GoCUID : 6MTRXTRECL24L48WYYY
		Gray base with locking casters; T-shaped base; no power/data; WITH modesty panel; no grommets.
A11	1	GoCUID : 6MTRXTRECL24L48WYYY
		Black base with locking casters; T-shaped base; no power/data; no modesty panel; no grommets.
A12	2	GoCUID : 6MTRXTRECL30L36WYYY
		Training room table – no grommets; no modesty panel; no wire trays; no grommets; black base and maple top.
A13	8	GoCUID : 6MTRFTRECL24L48WYYY
		Maple top, black base ; locking casters; T-shaped base; flip top; no grommets; no wire tray; with modesty panel. Similar to image below :
		
A14	38	GoCUID : 6MTRFTRECL30L60WYYY
		Fixed height table – no power/data; with modesty panel; with locking casters; flip top; no grommets; maple top and black base.
A15	6	GoCUID : 6MTRFTRECL30L60WYYY
		Fixed height table – with locking casters; flip top; no modesty panel; no power/data; no grommets; Y-shaped base; maple top and black base.
<b>Collaborative Tables</b>		
A16	1	GoCUID : 6CCTVAROLL36XXXJNXX
		Side table for collaborative space – 36” diameter; 20” high; 4 black post legs and maple top.

Line	Qty	Item description and GoCUID
A17	2	GoCUID : 6CCMVAROPL30XXXPNXX
<p>High kitchenette table – 42” high; white top without grommets, without modesty panel and fixed white base without casters. Similar to image below :</p> 		
A18	2	GoCUID : 6CCMVAROPL30XXXPNXX
<p>High table for kitchenette – 42” high; white top without grommets, without modesty panel and silver fixed base without. Similar to image below:</p> 		
A19	1	GoCUID : 6CMUHARERL42120XYXX
<p>Electric height adjustable table with screen mount; white top; with grommets; no modesty panel; no wire tray.</p>		
<p><b>Credenzas</b></p>		
A20	6	GoCUID : 6ZFHLXX24L48HSDSDSX
<p>On locking casters with retractable surfaces and drawers. 24” deep by 48” wide by 34” high. See image below:</p> 		

Line	Qty	Item description and GoCUID
<b>Soft Seating and Screens</b>		
A21	4	GoCUID : 6SBBINXXBUW1G19LMYN
Individual banquette without armrests; with legs. Firm seat – seat and backrest in different colors.		
A22	2	GoCUID : 6SBAINXXLUW1G19LMNY
Firms seat – seat and backrest in different colors. Must match wit the three-seater 6SBBTHXXLUW5G19LMYN on line A25 in this table.		
A23	4	GoCUID : 6SBBTWXXLUW3G19LMYN
Two-seater banquette without armrests, with legs. Firm seat – seat and backrest in different colors.		
A24	2	GoCUID : 6SBBTHXXLUW5G19LMYN
Three-seater banquette without armrests, with legs. Firm seat – seat and backrest in different colors.		
A25	1	GoCUID : 6SBBTHXXBUW5G19LMYN
Firm seat – seat and backrest in different colors. Must match with both one seaters 6SBBTHXXLUW5G19LMYN on line A22 of this table.		
		
A26	2	GoCUID : 6SBATHXXLUW5G19LMNN
Color TBD – fixed black legs without casters – these banquettes must be compatible with the 6MMTMDREOL42L72WYNX table on line A06 in this table for these items to be placed together. Similar to image below:		
		



Line	Qty	Item description and GoCUID
A27	3	GoCUID : 6SLCWAXXWUXXXXXMXXX
Rest area lounge chair with armrests; pivoting base; with assorted footrest.		
A28	3	GoCUID : 6STCWRXXLUXXXXXXNNX
Firm seat – backrest and seat in different colors – with 4 casters.		
A29	3	GoCUID : 6STCWLXXLUXXXXXXNNX
Firm seating – backrest and seat in different colors – with 4 casters.		
A30	30	GoCUID : 6SUCROXXLUX8XXXLXXX
Soft seating round stool 16”-18” diameter with 8” casters. The casters must not protrude from underneath the seat. Present at least 2 color choices.		
A31	6	GoCUID : 6SUCROXXLUX8XXXLXXX
24” diameter; color to be determined.		
<b>Kitchenette Chairs</b>		
A32	4	GoCUID : 6KBSBHxxLY15XXXRONX
No armrests, gray base, black surface, 30” high.		
A33	20	GoCUID : 6KKCSAxxLY16XXXMINX
Cafeteria chair with casters.		
A34	8	GoCUID : 6KKCSAxxLY16XXXMONX
Cafeteria chair without casters; stackable; no armrests; chrome/silver base, color to be determined.		
A35	20	GoCUID : 6KKCSAxxLY16XXXMONX
Cafeteria chair with casters.		
<b>Non SA</b>		
A36	3	GoCUID : N/A
Rectangular meeting room table; 2 pedestal post base; laminate surface; 30” deep x 63” wide x 29” high. No power/data; no modesty panel; no casters. Closest GoCUID to this item: 6MMTMDREOL30L66WYNX.		
A37	20	GoCUID : N/A
Training room table – rectangular; laminate surface; with post legs; with locking casters – 24” deep x 48” wide x 29” high. Closest GoCUID to this item: 6MTRXTRELL24L48WYYY.		
A38	20	GoCUID : N/A
Training room table – rectangular; laminate surface; with locking casters – 30” deep x 36” wide x 29” high. Closest GoCUID to this item: 6MTRXTRELL30L36WYYY.		

**ANNEX D  
ADDITIONAL SPECIFICATIONS, CERTIFICATIONS**

This Annex includes the additional Specifications, Certifications associated with NSA product forming part of the requirement.

**1. Specifications**

Please refer to Annex "C" – Additional Product Details, lines A36 to A38, inclusively.

**2. Certifications**

**.1 NSA Product Conformance**

**2.1 NSA Product Conformance** *(Required precedent to Issuance of a contract)*

The Supplier certifies that all the NSA products offered will conform to all specifications indicated in Annex A and D of the RFB, and meet the testing and performance requirements found at ANNEX A-1 and A-2 of the Supply Arrangement, as applicable.

\_\_\_\_\_  
Supplier's Signature

\_\_\_\_\_  
Date

**NSA Product Conformance Certification** *(applies after contract award)*

The Supplier warrants that the NSA Product Conformance Certification submitted by the Supplier with its bid is accurate and complete. The Supplier must keep proper records and documentation relating to the NSA product conformance and the testing requirements in this Annex, as applicable. The Supplier must not, without obtaining the prior written consent of the SAA, dispose of any such records or documentation until the expiration of the Contract or the expiry date of the Warranty, whichever is later. All such records and documentation must at all times during the retention period be open to audit, inspection and examination by the representatives of Canada, who may make copies and take extracts.

In addition, the Supplier must provide representatives of the SAA access to all locations where any part of the Work is being performed at any time during working hours. Representatives of the SAA may examine and test the Work as they see fit. The Supplier must provide all assistance and access to facilities, test pieces, samples and documentation that the representatives of the SAA may reasonably require for the carrying out of the inspection, which may also include the submission of test reporting documentation as listed in Annex A and D. The Supplier must forward such test pieces, samples and/or documentation that may also include letters of certification from the laboratories to such person or location as the representatives of the SAA specifies.

**ANNEX E  
COVID-19 VACCINATION REQUIREMENT CERTIFICATION**

The Contractor is to complete and submit the COVID-19 Vaccination Requirement Certification below with their bid.

**COVID-19 Vaccination Requirement Certification**

I, \_\_\_\_\_ (*first and last name*), as the representative of  
 \_\_\_\_\_ (*name of business*) pursuant to  
 \_\_\_\_\_ (*insert solicitation number*), warrant and certify that all personnel that  
 \_\_\_\_\_ (*name of business*) will provide on the resulting Contract who access  
 federal government workplaces where they may come into contact with public servants will be:

- (a) fully vaccinated against COVID-19 with Health Canada-approved COVID-19 vaccine(s); or
  - (b) for personnel that are unable to be vaccinated due to a certified medical contraindication, religion or other prohibited grounds of discrimination under the *Canadian Human Rights Act*, subject to accommodation and mitigation measures that have been presented to and approved by Canada;
- until such time that Canada indicates that the vaccination requirements of the COVID-19 Vaccination Policy for Supplier Personnel are no longer in effect.

I certify that all personnel provided by \_\_\_\_\_ (*name of business*) have been notified of the vaccination requirements of the Government of Canada's COVID-19 Vaccination Policy for Supplier Personnel, and that the \_\_\_\_\_ (*name of business*) has certified to their compliance with this requirement.

I certify that the information provided is true as of the date indicated below and will continue to be true for the duration of the Contract. I understand that the certifications provided to Canada are subject to verification at all times. I also understand that Canada will declare a contractor in default, if a certification is found to be untrue, whether made knowingly or unknowingly, during the bid or contract period. Canada reserves the right to ask for additional information to verify the certifications. Failure to comply with any request or requirement imposed by Canada will constitute a default under the Contract.

Signature: \_\_\_\_\_

Date: \_\_\_\_\_

**Optional**

For data purposes only, initial below if your business already has its own mandatory vaccination policy or requirements for employees in place. Initialing below **is not** a substitute for completing the mandatory certification above.

Initials: \_\_\_\_\_

Information you provide on this Certification Form and in accordance with the Government of Canada's COVID-19 Vaccination Policy for Supplier Personnel will be protected, used, stored and disclosed in accordance with the Privacy Act. Please note that you have a right to access and correct any information on your file, and you have a right to file a complaint with the Office of the Privacy Commissioner regarding the handling of your personal information. These rights also apply to all individuals who are deemed to be personnel for the purpose for the Contract and who require access to federal government workplaces where they may come into contact with public servants.

**ANNEX F  
LOCATION SPECIFIC DETAILS**

Quantities to deliver per site :

Line	Total Qty	GoCUID	Boucherville January 31 <sup>st</sup> , 2022	Laval January 31 <sup>st</sup> , 2022	St-Léonard January 31 <sup>st</sup> , 2022
<b>Meeting-Training Room Tables</b>					
A01	2	6MMTSMQPL30L30WNNX			2
A02	2	6MMTSMRELL30L48WNNX	2		
A03	3	6MMTSMRELL30L54WNNX		3	
A04	2	6MMTSMRELL30L54WNNX	2		
A05	1	6MMTSMRELL30L60WNNX	1		
A06	1	6MMTMDREOL42L72WYNX			1
A07	1	6MTRXTRELL24L36WYYY	1		
A08	2	6MTRXTRELL24L36WYYN		2	
A09	2	6MTRXTRELL24L48WYYY	2		
A10	8	6MTRXTRECL24L48WYYY		8	
A11	1	6MTRXTRECL24L48WYYY			1
A12	2	6MTRXTRECL30L36WYYY		2	
A13	8	6MTRFTRECL24L48WYYY			8
A14	38	6MTRFTRECL30L60WYYY	34	4	
A15	6	6MTRFTRECL30L60WYYY			6
<b>Collaborative Tables</b>					
A16	1	6CCTVAROLL36XXXJNXX			1
A17	2	6CCMVAROPL30XXXPNXX		2	
A18	2	6CCMVAROPL30XXXPNXX			2
A19	1	6CMUHARERL42120XYXX		1	
<b>Credenzas</b>					
A20	6	6ZFHLXX24L48HSDSDSX	6		
<b>Soft Seating and Screens</b>					
A21	4	6SBBINXXBUW1G19LMYN	4		
A22	2	6SBAINXXLUW1G19LMNY	2		
A23	4	6SBBTWXXLUW3G19LMYN	4		
<b>Soft Seating and Screens (Continued)</b>					
A24	2	6SBBTHXXLUW5G19LMYN	2		

Line	Total Qty	GoCUID	Boucherville January 31 <sup>st</sup> , 2022	Laval January 31 <sup>st</sup> , 2022	St-Léonard January 31 <sup>st</sup> , 2022
A25	1	6SBBTHXXLUW5G19LMYN	1		
A26	2	6SBATHXXLUW5G19LMNN			2
A27	3	6SLCWAXXWUXXXXXMXXX	3		
A28	3	6STCWRXXLUXXXXXXNNX	3		
A29	3	6STCWLXXLUXXXXXXNNX	3		
A30	30	6SUCROXXLUX8XXXLXXX	30		
A31	6	6SUCROXXLUX8XXXLXXX		6	
<b>Kitchenette Chairs</b>					
A32	4	6KBSBHxxLY15XXXRONX			4
A33	20	6KKCSAxxLY16XXXMINX	20		
A34	8	6KKCSAxxLY16XXXMONX		8	
A35	20	6KKCSAxxLY16XXXMONX	20		
<b>Non SA</b>					
A36	3	N/A		3	
A37	20	N/A	20		
A38	20	N/A	20		

### Service Canada Processing Center – Boucherville

#### Project contact :

- Sabrina Edouard, Project Officer, Cell : 438-843-8384 / Email : [Sabrina.Edouard@hrsdc-rhdcc.gc.ca](mailto:Sabrina.Edouard@hrsdc-rhdcc.gc.ca)

#### Shipping information :

<b>A</b>	Location	<b>Service Canada Processing Center of Boucherville</b> <i>540 boulevard D'Avaugour, Suite 201 Boucherville, Quebec J4B 0G6</i>
<b>B</b>	Loading dock? Access?	No
<b>C</b>	Platform?	No
<b>D</b>	Elevator?	Yes <i>Door: 3'-6" wide x 7'-0" high / Interior: 5'-6" wide x 4'-9" deep x 9'-0" high</i>

<b>E</b>	Freight elevator?	No
<b>F</b>	Delivery date?	<i>Start: January 31, 2022, call 48h in advance to confirm</i>
<b>G</b>	Delivery hours?	<i>Between 8:30 a.m. and 4:00 p.m.</i>
<b>H</b>	Installation date?	<i>Start: January 31, 2022, to be confirmed by the project authority</i>
<b>I</b>	Hours of installation?	<i>Between 8:30 a.m. and 4:00 p.m.</i>
<b>J</b>	Door size? Corridor size? Path from loading dock?	<i>Door opening width: 5'-10 "(double doors; each door is 2'-11" wide) On the ground floor - Distance from the exterior door to the elevator: +/- 35'-0 " Upstairs - Distance from the elevator to the start of each section: +/- 60'-0 "</i>
<b>K</b>	Other applicable information? i.e. building contact, other	<i>Other contact person: Matthieu Gauvin, Administrative and operations support agent, Estrie-Montérégie sector Phone : 514-787-2792 / Email : <a href="mailto:matthieu.gauvin@hrsdc-rhdcc.gc.ca">matthieu.gauvin@hrsdc-rhdcc.gc.ca</a></i>

### Service Canada Center - Laval

#### Project contact :

- **Mélina Thérien**, Cell : (514) 236-9665, Email : [melina.therien@hrsdc-rhdcc.gc.ca](mailto:melina.therien@hrsdc-rhdcc.gc.ca)

#### Shipping information :

<b>A</b>	Location	<i>Service Canada Center 2276 Autoroute Chomedey Ouest, Unités # 200A-200D Sainte-Dorothée, Quebec H7X 4C9</i>
<b>B</b>	Loading dock? Access?	No
<b>C</b>	Platform?	No
<b>D</b>	Elevator?	<i>No, the site is on ground floor</i>
<b>E</b>	Freight elevator?	<i>No, the site is on ground floor</i>
<b>F</b>	Delivery date?	<i>January 31, 2022 – call 48h in advance to confirm</i>

<b>G</b>	<i>Delivery hours?</i>	<i>Between 8am and 4pm</i>
<b>H</b>	<i>Installation date?</i>	<i>Same as delivery</i>
<b>I</b>	<i>Hours of installation?</i>	<i>Same as delivery</i>
<b>J</b>	<i>Door size? Corridor size? Path from loading dock?</i>	<i>See floor plan below(in orange on the floor plan = path to follow)</i>
<b>K</b>	<i>Other applicable information? i.e. building contact, other</i>	<i>N/A</i>

Floor plan

**NOTES GÉNÉRALES**

L'ENTREPRENEUR DOIT VÉRIFIER TOUTES LES DIMENSIONS, MESURES, PLANS ET SPÉCIFICATIONS AVANT QUE L'ŒUVRE COMMENCE, ET DOIT FAIRE PART À L'ARCHITECTE DE TOUTES ERREURS, ANOMALIES OU OMISSIONS AUX PLANS AVANT LE DÉBUT DES TRAVAUX.

L'ENTREPRENEUR EST RESPONSABLE DE L'EXÉCUTION DE TOUTS TRAVAUX NON DÉTAILLÉS DANS LES PLANS MAIS QUI SONT NECESSAIRES AU PARACHEMENT DES TRAVAUX, AFIN DE RENDRE LES TRAVAUX CONFORMES À L'ÉTAT D'ACHÈVEMENT DES TRAVAUX.

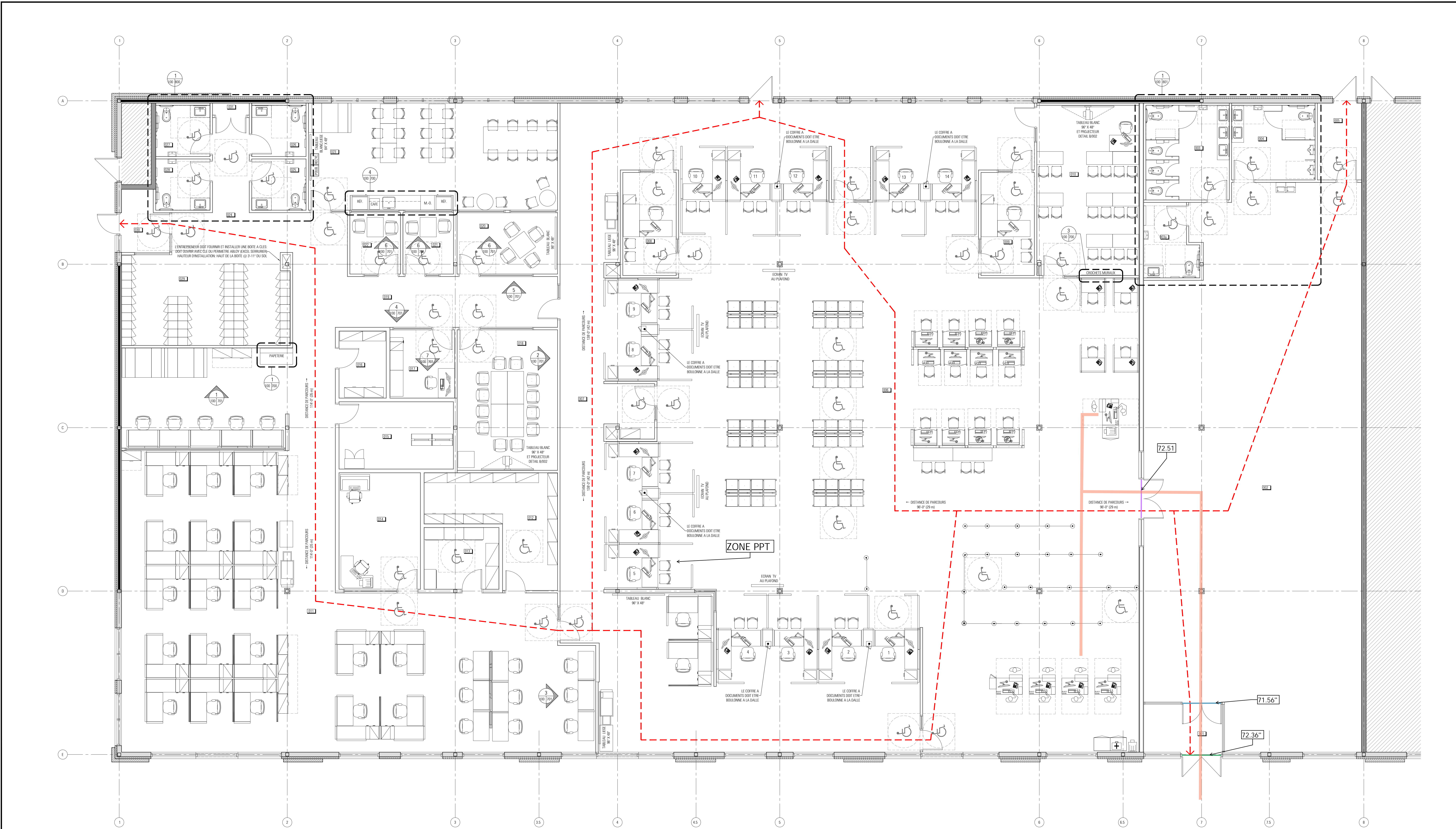
TOUTS LES EQUIPEMENTS PROPOSÉS DOIVENT ÊTRE DE QUALITÉ ÉGALE OU SUPÉRIEURE AUX SPÉCIFICATIONS ET DOIVENT ÊTRE APPROUVÉS PAR L'ARCHITECTE.

TOUTS LES PLANS DOIVENT ÊTRE LUS EN CONJONCTION AVEC LES PLANS ENVS PAR LES INGÉNIEURS EN ÉLECTRICITÉ, STRUCTURE ET MÉCANIQUE.

L'ENTREPRENEUR DOIT RAMASSER ET ENLEVER LES DÉCHETS ET DOIT NETTOYER LES LIEUX AVANT DE TERNIR SON CONTRAT.

TOUTS LES MATÉRIAUX DOIVENT ÊTRE INSTALLÉS SELON LES INSTRUCTIONS ÉCRITES DE LEUR FABRICANT.

DANS LA ZONE DE TRAVAUX, PRÉVOIR TRAVAUX DE PEINTURE SUR TOUTES LES SURFACES DE CYPRES, LES PORTES, LES CADRES ET LES MOULURES.



1 PLAN D'AMÉNAGEMENT  
ÉCHELLE: 3/16" = 1'-0"

NO.	DATE	DESCRIPTION DES RÉVISIONS	PAR
6	04-06-2021	ÉMIS POUR SOUMISSION ET PERMIS	MPF
5	07-05-2021	ÉMIS POUR COORDINATION 99%	MPF
4	16-04-2021	ÉMIS POUR COORDINATION 75%	MPF
3	26-02-2021	ÉMIS POUR COORDINATION 50%	MPF
2	12-02-2021	ÉMIS POUR COORDINATION	MPF
1	13-01-2021	ÉMIS POUR COORDINATION	MPF

**LÉGENDE**

- CLOISON EXISTANTE CONSERVÉE
- NOUVELLE CLOISON
- PORTE EXISTANTE À CONSERVER
- PORTE EXISTANTE RÉLOCALISÉE
- NOUVELLE PORTE
- NUMÉRO DE PIÈCE
- ZONE HORS TRAVAUX

- AMÉNAGEMENT**
- TOUTS LES MEUBLES ET FOURNITURES CLASSEMENT SONT À TITRE INDICATIF SEULEMENT ET DEVONT ÊTRE FOURNIS PAR LE CLIENT (SI SPÉCIFIÉ).
  - TOUTS LES CROQUETS DEVONT ÊTRE FOURNIS ET INSTALLÉS PAR L'ENTREPRENEUR.
  - TOUTS LES TABLEAUX BLANCS ET TABLES DOIVENT ÊTRE FOURNIS ET INSTALLÉS PAR L'ENTREPRENEUR (VOIR DIMENSIONS AUX PLANS D'AMÉNAGEMENT).  
TABLEAU BLANC DE LA COMPAGNIE COTN, SÈRE 2000, PORCELAINE BLANC  
TABLEAU BLANC DE LA COMPAGNIE COTN, SÈRE 2000, LES MARCHÉS 11"  
TABLEAU BLANC DE LA COMPAGNIE COTN, SÈRE 2000, COMMANSON  
MODELS C, TONNEAU BLANC ET DES MARCHÉS 11"  
L'ENTREPRENEUR DOIT INSTALLER LE BAS DES TABLEAUX @ 31" DU PLANCHER PAR LE CLIENT.
  - LES PROJECTEURS DES SALLES #4018 ET #4019 SONT FOURNIS ET INSTALLÉS PAR LE CLIENT.
  - LES BANCS DE POUBELLE ET DE RECYCLAGE DANS LA CUISINETTE SONT FOURNIS PAR LE BAILLEUR.
  - LE RACCORDEMENT DES PARTITIONS ET DES COLONNETTES ÉLECTRIQUES DOIT ÊTRE EFFECTUÉ PAR L'ENTREPRENEUR, VOIR PLANS DES INGÉNIEURS.
  - TOUTS LES CAGÈRES VESTIERS 12" X 18" SONT FOURNIS ET INSTALLÉS PAR LE CLIENT. DÉPOSER DE SÉCHAGE À TENDRE LES CAGÈRES DE SÈCHAGE DIFFÉRENTES (BLANC, GRIS ET ORANGE).
  - L'ENTREPRENEUR DOIT FOURNIR ET INSTALLER LES NOUVELLES TOILES SOLAIRES POUR TOUTES LES FÊTRES DU LOCAL.  
TOILES 11" DE HAUT À MONTAGE À BRAS, SYSTÈME BALANCE ET CASSETTE 3" CD  
COULEUR DE LA CASSETTE TEL QUE LES CAGÈRES DE TENDRE  
SOLEIL (MONTAGE TEL: 514-883-1949)  
2412 7% D'OUVERTURE RÉGULIER
  - L'ENTREPRENEUR DOIT FOURNIR ET INSTALLER LES TABLETTES, LES COMPAGNE, LES ANNAIRES ET LES OUVRES, VOIR DÉTAILS D'ÉCRITURE ET ÉGAGEMENTS PLANS DES INGÉNIEURS.
  - TOUTS LES COFFRES FORT ET COFFRES À DOCUMENTS FOURNIS PAR LE CLIENT DEVONT ÊTRE BOUTÉS À LA DALLE PAR L'ENTREPRENEUR.
  - TOUTS LES ÉTAGÈRES FOURNIS PAR LE CLIENT DANS LES PRESS #4012, #4013 ET #4014 DEVONT ÊTRE BOUTÉS À LA DALLE PAR L'ENTREPRENEUR.
  - L'ENTREPRENEUR DOIT INSTALLER UNE BOÎTE À CLÉS TRAVAUX DE AGA-ARBOUCY SERA FOURNIE PAR LE CLIENT.
  - TOUTS LES ÉCRANS TV SONT FOURNIS ET INSTALLÉS PAR LE CLIENT.

**RIO CAN**  
REAL VISION, SOLID GROUND.

AMÉNAGEMENT NOUVEAU LOCAL  
NOM DU PROJET / PHASE

LAVAL (Qc)  
ADRESSE DU PROJET

Ordre des architectes  
# 3583  
LINE LAURIN  
ARCHITECTE

**artesa**  
ARCHITECTES CONCEPTEURS  
450-441-1133  
www.artesaconcept.com

PLAN D'AMÉNAGEMENT  
TRACÉ DES  
MARIE-PIER FRADETTE  
LINE LAURIN  
08-10-2020  
20-154-1  
DATE / DOSSIER

INDIQUÉE A-100



**Service Canada Center – Saint-Leonard****Project contact :**

- **Camille Belle-Isle**, Cell : (514) 974-3899, Email : [camille.belleisle@hrsdcc-rhdcc.gc.ca](mailto:camille.belleisle@hrsdcc-rhdcc.gc.ca)

**Shipping information :**

<b>A</b>	Location	<i>5935, boulevard des Grandes Prairies Saint-Léonard, QC H1P 1A5</i>
<b>B</b>	Loading dock? Access?	<i>No</i>
<b>C</b>	Platform?	<i>No</i>
<b>D</b>	Elevator?	<i>N/A : the site is on ground floor</i>
<b>E</b>	Freight elevator?	<i>N/A : the site is on ground floor</i>
<b>F</b>	Delivery date?	<i>January 31, 2022 – call 48h in advance to confirm</i>
<b>G</b>	Delivery hours?	<i>Between 8am and 4pm</i>
<b>H</b>	Installation date?	<i>Same as delivery</i>
<b>I</b>	Hours of installation?	<i>Same as delivery</i>
<b>J</b>	Door size? Corridor size? Path from loading dock?	<i>36"</i>
<b>K</b>	Other applicable information? i.e. building contact, other	<i>N/A</i>

Plan d'étage / Floor plan:

Porte arrière et stationnement

