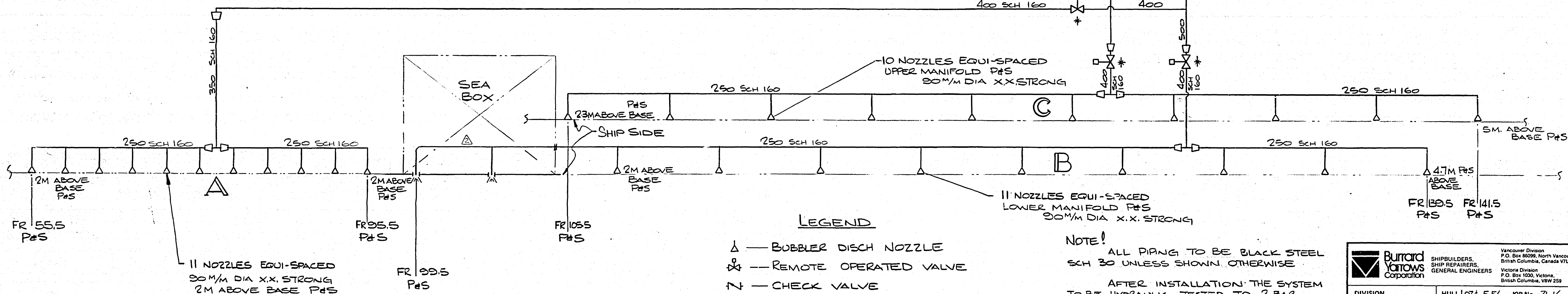


BUBBLER USE, PORT & STARBOARD

A + B = BUBBLE LINE

B + C = BOWTHRUSTER



LEGEND

- △ — BUBBLER DISCH NOZZLE
- ⊗ — REMOTE OPERATED VALVE
- N — CHECK VALVE
- ⊞ — BLOW-OFF SILENCER
- ⊞ — MANUAL EMERGENCY CROSSOVER
- ⊞ — REDUCER
- ⊞ — BUBBLER DISCH I.W.O. SEA BOX

NOTE!

ALL PIPING TO BE BLACK STEEL
SCH 30 UNLESS SHOWN OTHERWISE

AFTER INSTALLATION THE SYSTEM
TO BE HYDRAULIC TESTED TO 2 BAR

ALL CONTROL VALVES TO BE ABOVE
DEEPEST OPERATING WATER LEVEL.
* LOCATED IN ENGINE ROOM

* INDICATES SUPPLIED BY BUBBLER
MACHINERY MANUFACTURER

THE REMAINING REQUIREMENTS OF LYODS
RULES FOR PUMPING AND PIPING TO BE
COMPLIED WITH AS FAR AS THEY ARE
APPLICABLE

		SHIPBUILDERS, SHIP REPAIRERS, GENERAL ENGINEERS Vancouver Division P.O. Box 1030, Victoria, British Columbia, V8W 2S9	
DIVISION VANCOUVER		HULL 1074 554 JOB No. 71-14 OWNERS GULF CANADA RESOURCES INC	
TITLE AIR BUBBLER SYSTEM DIAGRAM			
REPRESENTS OWNERS LYODS CSI	DATE 3.05.82 4.4.82 7.6.82	DRAWN D.M.A. CHECKED P.M.A. APPROVED SCALE NTS DATE MAR 17/82	DWG. No. 71-10-01

DISTRIBUTION					
DEPARTMENT	QTY.	DEPARTMENT	QTY.	DEPARTMENT	QTY.
Owner	4	Operating Manager	1	Shoreward	
Classification		New Const. Dept.	1	Repair	
Engineering Inspection		Quality Dept.		Alarm	
GM		Repair Dept.		Post Repair	4
Victoria Div.		Ship Dept.		Machine Shop	
Marine Div.		Logistics			
Machinery D.D.		Left		Sheet Metal	
Electrical D.D.		Right		Electric Shop	
Working Engineer		Water		Engine Room	2
REVISION					
No.	DATE	BY	DATE		
1	71-10-01		13-05		
2	71-10-01		22-0		
3	71-10-01		14/7/82		
4	71-10-01		1/9/83		