



RETURN BIDS TO:

RETOURNER LES SOUMISSIONS À:

Bid Receiving - PWGSC / Réception des soumissions -
TPSGC

11 Laurier St. / 11, rue Laurier

Place du Portage, Phase III

Core 0B2 / Noyau 0B2

Gatineau, Québec K1A 0S5

Bid Fax: (819) 997-9776

**SOLICITATION AMENDMENT
MODIFICATION DE L'INVITATION**

The referenced document is hereby revised; unless otherwise indicated, all other terms and conditions of the Solicitation remain the same.

Ce document est par la présente révisé; sauf indication contraire, les modalités de l'invitation demeurent les mêmes.

Comments - Commentaires

Vendor/Firm Name and Address

Raison sociale et adresse du
fournisseur/de l'entrepreneur

Issuing Office - Bureau de distribution

Vehicles & Industrial Products Division

140 O'Connor, Tower East

4th Floor

140 O'Connor, Tour Est

4ème étage

Ottawa

Ontario

K1A 0S5

Title - Sujet Quick Response Support Vehicle Camion d'appui d'intervention rapide	
Solicitation No. - N° de l'invitation M9062-223073/A	Amendment No. - N° modif. 001
Client Reference No. - N° de référence du client M9062-223073	Date 2022-02-11
GETS Reference No. - N° de référence de SEAG PW-\$\$\$HP-927-80820	
File No. - N° de dossier hp927.M9062-223073	CCC No./N° CCC - FMS No./N° VME
Solicitation Closes - L'invitation prend fin at - à 02:00 PM Eastern Standard Time EST on - le 2022-03-02 Heure Normale du l'Est HNE	
F.O.B. - F.A.B. Plant-Usine: <input type="checkbox"/> Destination: <input type="checkbox"/> Other-Autre: <input type="checkbox"/>	
Address Enquiries to: - Adresser toutes questions à: Takam(hp927), Maurice	Buyer Id - Id de l'acheteur hp927
Telephone No. - N° de téléphone (613) 297-3516 ()	FAX No. - N° de FAX () -
Destination - of Goods, Services, and Construction: Destination - des biens, services et construction:	

Instructions: See Herein

Instructions: Voir aux présentes

Delivery Required - Livraison exigée	Delivery Offered - Livraison proposée
Vendor/Firm Name and Address Raison sociale et adresse du fournisseur/de l'entrepreneur	
Telephone No. - N° de téléphone Facsimile No. - N° de télécopieur	
Name and title of person authorized to sign on behalf of Vendor/Firm (type or print) Nom et titre de la personne autorisée à signer au nom du fournisseur/ de l'entrepreneur (taper ou écrire en caractères d'imprimerie)	
Signature	Date

AMENDMENT 001

This solicitation amendment 001 is issued to:

extend the solicitation closing date;
answer bidders' questions; and
revise Annex "B" - Mandatory Requirements

1. Extension of the solicitation closing date;

The solicitation closing date is hereby extended to march 2, 2022, 2:00 PM, EST.

2. Answer to bidders' questions

RCMP Truck Specifications

Question 1:

Page 27/40 –

Transmission / Transfer Case – spec calls for 6 speed auto transmission but F550 comes with 10-speed auto transmission.

Response 1:

Change spec to 10 speed transmission, should have read 6 speed minimum

Question 2:

Page 28/40 -

Wheelbase – spec states 204" minimum. The published wheelbase for this model truck is 203".

Response 2:

Due to the build and body construction needed for this requirement, the wheelbase will remain at 204"

Question 3:

Running Boards – spec calls for steel. Is powder coated aluminum acceptable?

Response 3:

Yes, powder coated aluminum (must be heavy duty) is acceptable

RCMP Body Specifications

Question 4:

Overall exterior body dimensions –

The maximum length of the body excluding the rear bumper is stated as 134" however sections 9-12 starting on page 31 of 40 specify a specific dimension for each of the 4 compartments. The total sum of those compartments is 132". This does not allow for spacing between compartments and the necessary front and rear wall thicknesses.

In order to meet all the compartment widths specified we require an increase the length of the body to 144". If not than some compartments would have to be made narrower to meet the maximum length.

Response 4:

The requirement has not requested spacing between the compartments in sections 9 to 12 & 31 to 40.

BODY CONSTRUCTION:

Question 5:

Item 2. Will the client accept a 3"x5"x3/8" aluminum sill that bolts to the chassis using rubber isolated ford OEM body mounts?

Response 5:

Sill specification will remain as stated 10" x 2" x 1/4" structural aluminum tubing to allow proper support of the body construction.

Question 6:

Item 5. Specification states the rear bumper must be 3/16" checker plate aluminum, but line item 16 states 1/8" aluminum checker plate. Are either thickness acceptable?

Response 6:

Item 16 has been updated to read 3/16" aluminum checker plate.

Question 7:

Item 6. "Door latches must be Stainless steel T-handles - Our standard latch is a Black powder coated cast aluminum paddle handle made by Tri-Mark. Will this be acceptable?

Response 7:

Yes, the Tri-Mark powder coated cast aluminum paddle handle will be acceptable.

Question 8:

Item 16. (2) The tender requests a Class V hitch with a 2" receiver. A class V hitch does not come with a 2" receiver, a class IV comes with a 2" receiver. Is Class IV ok? If Class V hitch in the rear is required, it will have a 2 1/2" receiver.

Response 8:

A class V is available with a 2" receiver but will also accept a 2 1/2" receiver.

3. Revision of Annex "B" - Mandatory Requirements

DELETE:

Annex "B" - Mandatory Requirements - Quick Response Support Truck in its entirety

REPLACE with:

Annex "B" (Revised) - Mandatory Requirements - Quick Response Support Truck attached hereto.

ANNEX “B” (Revised) - MANDATORY REQUIREMENTS - QUICK RESPONSE SUPPORT TRUCK

Objective:

The Quick Response Support Truck (QRST) for Tactical Support Group (TSG) is used more now than ever in direct support to Major Crime Unit (MCU) and District requirements. The QRST is used on a regular basis for daily activities and for the towing of two major trailers, 1- 14' covered trailer that contains search and operational TSG equipment and 1- 28' covered trailer used to transport a side by side ATV with TSG equipment. The Chassis-Cab with Service Box option is needed to carry all necessary tools when on the road for operational assistance to districts, MCU with public order, crowd control, crowd dispersion, large scale searches and residential searches. The unit is replacing a current vehicle, which is on extended life and at the end of its current life cycle.

The replacement QRST is specifically designed to meet the new operational requirements TSG is now facing. The vehicle must operate safely and efficiently in year round conditions, including mud, snow and ice and in temperatures ranging from -40C to 37C. The vehicle will be operated mainly on paved surfaces but will go on rough terrain and or on gravel roads in cities and highways including mountainous areas while towing either trailer.

Deliverables:

All bidders must submit a minimum of 5 references on similar vehicle builds which they have completed within the last 5 years. A detailed sheet from the cab and chassis manufacturer showing the proposed truck build with options must accompany the bid package.

The successful bidder must submit a Proposed Production Schedule indicating the work to be done in-house and any work to be subcontracted to an off-site second party along with detailed CAD drawings of the layout and cross sections a minimum of two weeks prior to the pre-production meeting.

Meeting:

There will be a meeting between PSPC, the RCMP and the successful bidder prior to construction of this vehicle to ensure that all requirements are understood and will be met. Meeting minutes to be taken by the fabricator and signed off by the RCMP. This pre-production meeting will be held at the fabricators facility. There will also be a final inspection prior to shipping to the delivery destination for acceptance in accordance with the terms of the contract.

Travel:

To avoid delay in the proposed production schedule, the fabricator must notify the RCMP a minimum of five (5) working days in advance of a desired inspection date in order that travel arrangements can be made. Travel and accommodations for the preproduction meeting and inspections will be paid for by Canada.

RCMP TRUCK SPECIFICATION

**2022 Model Year or Later, Conventional – Crew Cab & Chassis, 4 x 4
19,500 GVWR Maximum**





RCMP CHASSIS SPECIFICATION			
Manufacturer Model			
	Compliant		
	Yes	No	
Mandatory Requirements			
Engine	6.7 L, V8 Turbo Diesel, 300 hp minimum. Operator Commanded Regeneration, Programmable Engine Shutoff.		
Alternator	Dual Heavy Duty, 350 amp. minimum		
Batteries	(2) 12V, 78 amp., 750 CCA		
Block Heater	1500 watt, 110 V		
Transmission / Transfer Case	6 Speed automatic minimum with overdrive, four wheel drive, electronic shift on the fly		
Load Capacity (minimum)	Front Axle: 7,500 lbs. min. Rear Axle: 14,700 lbs. min. GVWR: 19,500 lbs. min.		
Front Axle & Suspension	Coil Springs, Shock Absorbers		
	Stabilizer Bar		
Rear Axle & Suspension	Limited Slip, 4.10 ratio		
	Dual Wheels – Single Axle		
	Traction Control		
	Stabilizer Bar		
	Extra Heavy-Service Suspension Package		
Power Brake Package	Hydraulic, Disc, ABS		
Wheelbase	204 inches minimum		
Cab to Axle	84 inches		



Tow Hooks	Front frame mounted		
Overall Length	302 inches (cab, chassis & body including rear bumper) maximum		
Box Body Length	132 inches maximum excluding rear bumper		
Front Tires & Wheels	225/70R19.5, "G" rated, traction tread (minimum requirement)		
	19.5 x 6, Polished Aluminum Disc		
Rear Tires & Wheels	225/70R19.5, "G" rated, traction tread (minimum requirement)		
	19.5 x 6, Polished Aluminum, Disc outer, steel inner		
	Spare wheel and tire with 6 ton jack		
Fuel Tanks	Dual diesel fuel tanks, 250 litre minimum		
Gas & Brake Pedals	Adjustable		
Horns	Dual, Electric		
Mirrors	Electric Remote Heated, 102" telescoping trailer/body style (must be capable of being folded into a point allowing an overall cab width of 96" or less), with integrated clearance lamps.		
Convex Mirrors	Left/Right hand side		
Glass	Tinted windshield & front side door glass, rear door glass & rear window dark tint (privacy)		
Bumper	Front, HD aluminum push style to breach gates and obstacles. (see Annex B)		
Running Boards	Extra heavy duty steel or powder coated heavy duty aluminum, 6 inch wide min. front & rear door length, both sides		
Cab Interior	Dark pewter/grey vinyl & cloth or similar dark colors preferred		
Door Windows	Power electric, tinted		
Door Locks	Power electric		
Driver & Front Passenger Seat	High back, cloth or vinyl, manual lumbar (bucket), 40/20/40 with center console		
Rear Seat	60/40 Fold-up bench		
Floor Covering	Black vinyl / no carpet		
Lamps	Interior ceiling mounted reading lamps, including a red LED (police) option		
Air Bags	Driver & passenger minimum		

Instrument Panels & Controls	Electric coolant, transmission temperature & fuel gauges		
	Cruise control		
	Tilt steering wheel		
	Back-up alarm (with manual override switch)		
	AM/FM stereo radio with clock		
	Remote, keyless entry		
	Electric windshield wipers, intermittent, wired through ignition		
	Air conditioning/heating, manual control		
	OEM, (Original Equipment Manufacturer) installed upfitter switches, 4 minimum		
	Blue Tooth		
	Four OEM remote key fobs that will control both the doors and OEM alarm system.		
	Up fitter Interface Module		
Power Outlet	Dash mounted 110V / 400W power outlet		
Brake Controller	An electronic over hydraulic brake controller to be mounted in cab to control the trailer braking system		
Camera	Rear view back up camera		
Back-up Alarm	Back-up alarm with override switch		
Skid Plates	Transfer case protection		
Wheel Well Liners	Front wheel well liners		
Paint	Cab: Charcoal Grey		
	Chassis: Black, high solids polyurethane		

Quick Response Support Truck
Annex "B" - Mandatory Requirements - Specification Date: 2022 January 31
RCMP BODY SPECIFICATION

		Compliant		Supporting Documentation or Statement of Compliance (please indicate the reference page number of your Technical Bid where the information can be found.)
		Yes	No	
	Mandatory Specification			
Provide and Install body	As detailed in Annex "B"			
Overall exterior body dimensions	Length: 134 inches' maximum (excluding rear step bumper)			
	Width: 96 inches maximum			
	Height: Side packs 60 inches (even with cab roof) + ladder compartment 24". Total 84".			
BODY CONSTRUCTION:				
1.	Framing and exterior body must be fabricated of aluminum to form an all welded modular body, with the following features:			
2.	10" x 2" x 1/4" structural aluminum tubing long sills with 3/8" rubber frame rail spacers and rubber protected U-bolt mounts.			
3.	2" x 2" x 1/4" structural aluminum tubing cross members on 16" centers minimum must be incorporated within the long sills.			
4.	Side pack surfaces such as tops, sides & doors must be fabricated of smooth 1/8" 5086 marine grade aluminum, bottom of side packs to be 3/16" aluminum. Front wall exterior to be covered with a 1/8" polished checker plate to protect against stone chips.			
5.	Rear 8" step bumper must be of heavy duty construction covered with 3/16" NFPA checker plate aluminum.			
6.	Side pack and top storage doors; all doors must be double sided 1/8" smooth aluminum construction on a stainless steel piano hinge with a 1/4" pin bolted to the body with piano hinge with a 1/4" pin bolted to the body with a bulb type rubber weather stripping and hydraulic hold open cylinders. Doors must be equipped with Heavy Duty Stainless Steel T-Handle latches with cast in bolts and 3 point cams. All locks must be keyed alike with lock cylinders protected from the elements. 			
	All latching rods must be protected from damage from possible shifting loads or falling objects within the compartments. Aluminum drip rail moldings must be			

	placed above all compartment doors.			
7.	<p>An aluminum full length enclosed storage mounted on top of the body must extend from the rear to the front of the body for storage of long items such as ladders. This compartment must have a horizontal separator (shelf) from the rear to the front forming a top and bottom area within the compartment. Compartment must be 24" high and 48" wide.</p> 			
8.	Top of side packs and top of roof ladder storage must be 3/16" NFPA checker plate aluminum. These surfaces must be capable of supporting the weight of a person walking on them.			
STREET & CURB SIDE CONFIGURATION:				
9.	One compartment must be located at the front street side corner of the body, 24" wide x 60" high x 22" deep. The interior of this compartment must extend to the curb side at the floor height (pass thru design). A slide out tray must be placed at the floor line (above truck frame) rated for 1,000lbs. The slide tray must lock in the open and closed positions from either side of the vehicle. The slide tray must have a 2" inch lip to prevent items from falling out and must be lined with a rubber matt.			
10.	The second compartment must be 34" wide x 60" high x 22" deep at the bottom (outside frame. Top portion to be xx deep (divided at center line of driver to passenger side of body). A slide out tray must be installed at the bottom of the compartment with a slide tray rated for 500 lbs. The slide tray must lock in the open and closed position. Slide tray must have a 2" inch lip to prevent items from falling out and must be lined with a rubber matt. Tray must accommodate a generator that will be installed by the RCMP at a future time which measures 26 1/2" long x 20" wide x 21 1/4" high. This compartment must also have two adjustable aluminum shelves mounted on unistrut above the generator height. Shelves must have a 2" lip and rubber matting.			
11.	The third compartment which is above the wheel area must be 46" wide x 40" high. This compartment will be of a pass through design with a slide out tray rated for 1,000 pounds accessible from the driver and passenger side of the truck. The slide tray must lock in the open and closed positions from either side of the vehicle. The slide tray must have a 2" inch lip to prevent items from falling out and must be lined with a rubber matt. Compartment door must be hinges at the top and must have hydraulic cylinders to hold it open in a position as high as possible.			
12.	The final compartment on the street side must be 28" wide x 60" high x 22" deep from top to bottom. This compartment must have 4 adjustable shelves on unistrut. All shelves must have a 2" lip and be lined with rubber matting.			
13.	Curb side configuration reflects street side in all details and specifications as per items #9, 10 & 11 with the exception of the rear most compartment on the curb side where a locking slide out drawer opening from the top must be placed at mid height for hand gun storage. This drawer must have a secure Abloy lock. Two adjustable shelves must be placed above the drawer.			
Rear Storage				

14.	<p>A rear storage area must be placed at the rear of the truck accessible by a roll up door. This compartment will store the vehicles spare wheel and tire on a slide out tray. An adjustable shelf must be placed above the spare. A ladder to access the roof of the truck must be installed on the left side of the body</p> 			
Bumpers, Trailer Hitch, Winch				
15.	<p>OEM front bumper must be replaced with an AliArc or equivalent heavy duty aluminum construction bumper providing maximum protection to the front of the vehicle for breaching obstacles such as gates. Factory tow hooks must remain accessible. A 2" trailer receiver must be placed at the front of the vehicle mounted to the frame. Receiver will be used for the portable winch. Wiring must be installed with quick connects for the winch.</p> 			
16.	An aluminum rear step bumper must be installed with a 3/16" non-slip aluminum checker plate surface as per item #5.			
16.	A Class V, 16,000 lb. minimum rear hitch with 2" receiver minimum must be mounted below the rear bumper. A 7 pin RV type connector must be installed and Quick connects for the winch.			
17.	A Warn Winch or equivalent rated at 16,000lbs minimum must be supplied. Winch must be mounted to a plate which fits in the front or rear hitch receivers.			
12 VOLT ELECTRICAL:				
18.	All exterior lights must be LED and meet CMVSS (Canadian Motor Vehicle Safety Standards)			
19.	Grote 54193 or equivalent oval amber mid-ship turn signals with full backed rubber grommets must be installed, one on the left side and one on the right side.			
20.	All compartments must have interior LED lighting equipped with a manual on/off switch. A master control switch with a power on indicator light must be placed in the cab area to shut down all 12V power to compartment lights.			

Solicitation No. - N° de l'invitation
M9062-223073/A

Amd. No. - N° de la modif.
001

Buyer ID - Id de l'acheteur
HP927

Client Ref. No. - N° de réf. du client
M9062-223073

File No. - N° du dossier

CCC No./N° CCC - FMS No/ N° VME

21.	A back-up alarm with a manual shut-off switch must be installed on the vehicle if not provided by the OEM.			
22.	Complete back up camera installation with all necessary components as required from OEM kit. System must be fully functional.			
Emergency Lighting				
23.	A Will-Burt LED remote controlled tower light or equivalent must be installed on the roof on the truck body with a minimum extended height of 7.5 feet. Must operate on 12V, minimum 60,000lumens.			
24.	A switch console with internal siren control must be installed in the cab in a suitable location so that the driver can access the panel. This unit must incorporate indicator lights, back lighting and heavy-duty switches operating the following installed equipment:			
25.	Eight (8) Tomar 7" x 9" RECT-79LL-RB Series LED Lightheads with mounting bezels or equivalent must be mounted as follows: One at each front top corner of box, one at each rear top corner. Two on each side of box, one at each top corner.			
26.	Four (4) Tomar RECT-16LS/V-RB Series LED Mini Warning Lights with required mounting brackets or equivalent must be mounted as follows: One at each front side leading corner of front fender area. One at each edge of front grille area.			
27.	One (1) Whelen 100 Watt Siren Speaker SA315P or equivalent. Mounting location under hood to be determined.			
28.	One (1) Whelen CenCom Sapphire Control Panel CCSRN3 must be mounted in switch consol.			
29.	Six (6) Tomar 7" x 9" R79L-13 Series LED Scene Lights with mounting bezels or equivalent must be mounted as follows: One at each rear top box corner next to red/blue light heads. One at each (street & curb) top side of box next to red/blue light heads.			
30.	An amber traffic arrow must be placed at the rear of the truck above the rear storage compartment roll up door.			
Warranty / Manuals				
31.	<p>The successful Contractor must provide a minimum:</p> <ul style="list-style-type: none"> • Ten-year warranty against manufacturing and material defects on the truck body build including galvanic reaction. • A five-year warranty on electrical wiring for AC and DC installed by the Contractor. • A two-year warranty on all sub components installed by the fabricator. • A two-year warranty on paint completed by the fabricator. <p>The above warranties will be administered through the Contractor from the date of delivery including work completed by sub-contractors if any. A signed letter from the Contractor on company letterhead must be provided stating the above warranties prior to delivery.</p>			
32.	Upon delivery, the Contractor must supply the RCMP with AC and DC wiring diagrams, CEC, ESA certification documentation. The Contractor must provide Transport Canada NSM Certification (National Safety Mark). The Contractor must also provide an instruction manual (printed or electronically) on the mechanical/electrical workings of the entire vehicle and all equipment/owner's manuals of installed equipment.			

NOTE:

Coatings such as ECK must be used at all points where dissimilar metals may be in contact to eliminate galvanic reaction including hinges, handles, fasteners and hardware.

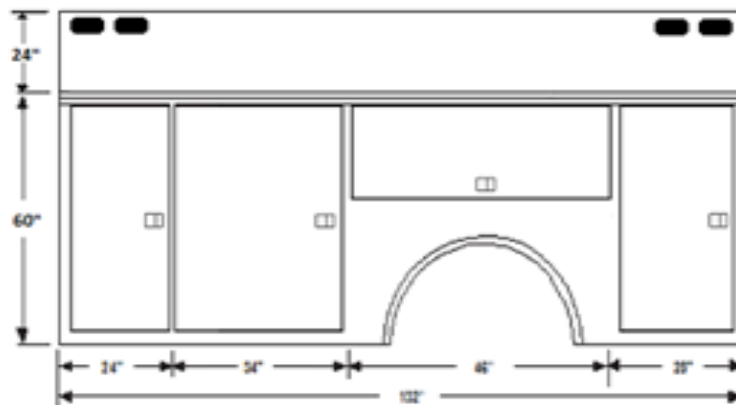
Wherever actual brand or model names are referenced, equipment of equal or superior manufacture will be considered. The exception being where locks and entry door hardware must meet RCMP approved standards.

The written specification and the drawings are to be considered as one, notation of an item in one, and not in the other, does not negate the need for the given item.

Dimensions noted in the written specification and on the drawings provided can be considered as approximate and can be adjusted slightly to accommodate the manufacturing requirements on agreement of the RCMP and the successful bidder. RCMP drawings/photos when provided are supplied to illustrate the concept of the intended vehicle only.

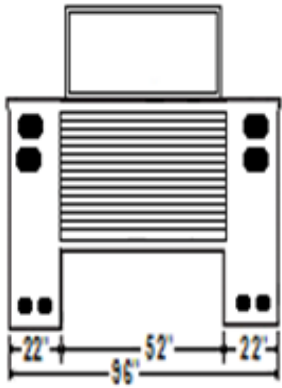
The written specification and the drawings are to be considered as one, notation of an item in one, and not in the other, does not negate the need for the given item.

Left Side View (not to scale)



ANGLAIS	FRANÇAIS
Left Side View (not to scale)	Vue latérale gauche (non à l'échelle)
24"	24 po
60"	60 po
24"	24 po
34"	34 po
46"	46 po
28"	28 po
132"	132 po

Rear View (not to scale)



ANGLAIS	FRANÇAIS
Rear View (not to scale)	Vue arrière (non à l'échelle)
22"	22 po
52"	52 po
22"	22 po
96"	96 po