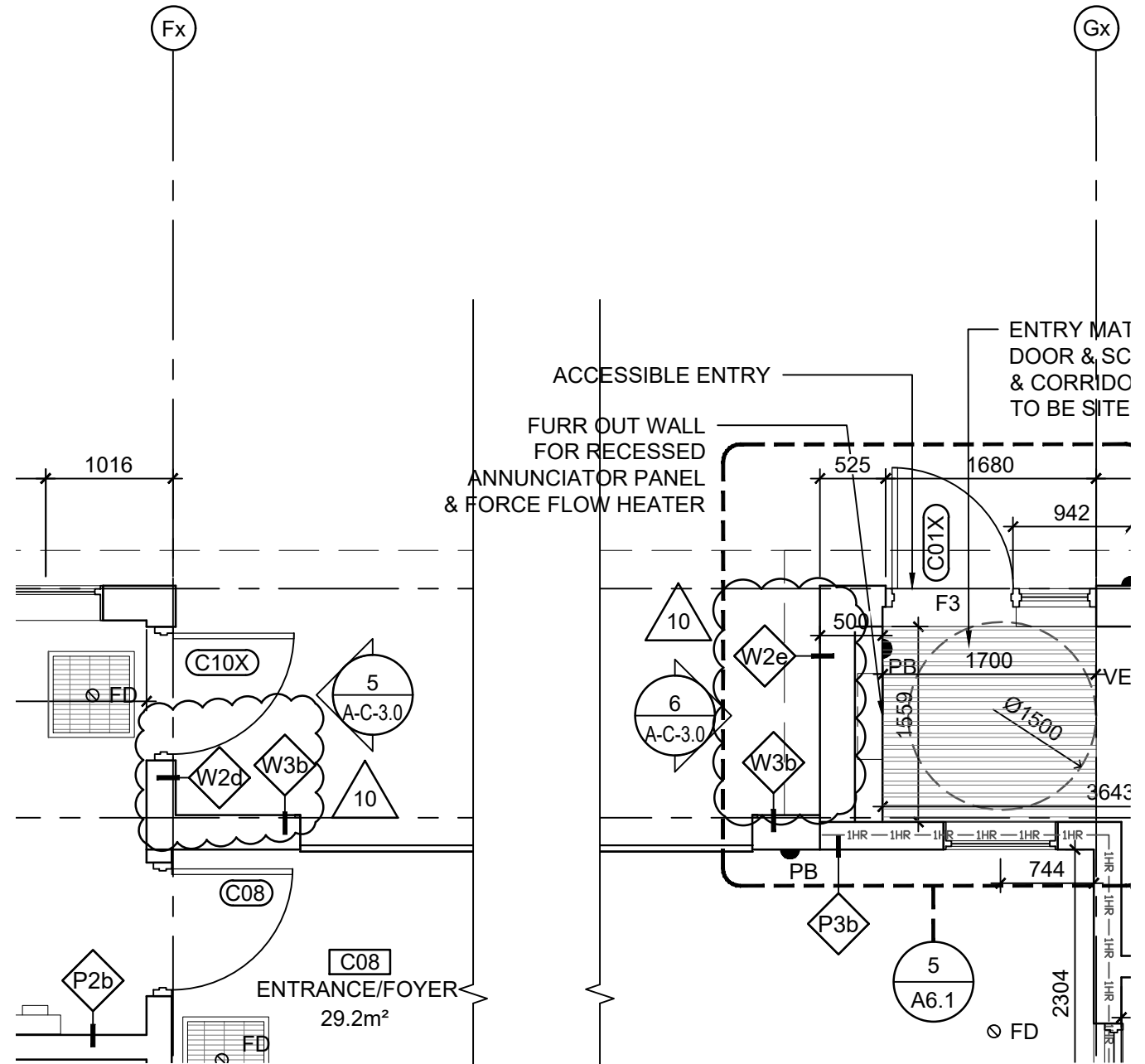


**5** ENLARGED PLAN DETAIL AT VESTIBULE  
A-6.1 1:10



**2** MILKROOM ZONE  
A-C-2.1 1:50

**1** OFFICE AREA  
A-C-2.1 1:50

CSC-COW BARN & MANURE TANK (DOCUMENT SET 2) PUBLIC SERVICES AND PROCUREMENT CANADA		PROJ. #:	ADDENDUM 10
WALL TAG UPDATES (MILK PARLOUR ENTRY)		THA:1945 R.100644.001	<b>SK-05</b>
TAYLOR   HAZELL ARCHITECTS LTD. 2928 DUNDAS ST. W, TORONTO, ONT. M6P 1Y8	PHONE: (416) 862-2694	DATE: 2022-02-11	