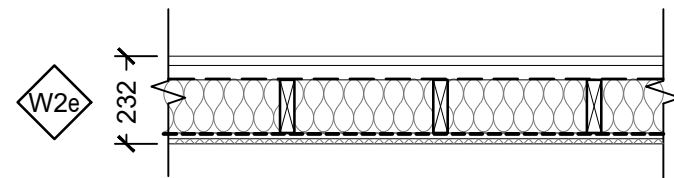
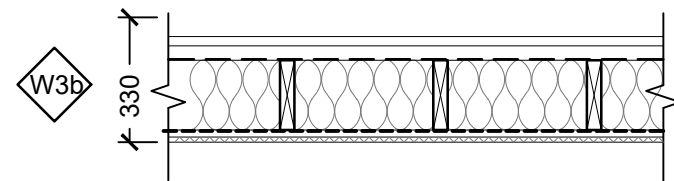


EXTERIOR SIDE WALL - TYPICAL
 w/ INTERIOR PVC FINISH ON OSB SHEATHING
 25mm PRE-FINISHED ALUMINUM PLATE PANEL (0.3 mm STEEL) c/w CONCEALED FASTENERS
 38 x 89mm HORIZONTAL WOOD STRAPPING AT 610 mm c/c
 SHEET AIR BARRIER
 38 X 140mm WOOD STUDS SPF No.1/2 SPACED AT 406mm c/c
 RSI: 3.87 MINERAL WOOL BATT INSULATION
 0.1524 mm POLY VAPOUR BARRIER
 16mm OSB SHEATHING (FOR MOUNTING EQUIPMENT)
 13mm PVC PANEL (VERTICAL)



EXTERIOR SIDE WALL - TYPICAL
 w/ INTERIOR PVC FINISH ON OSB SHEATHING
 25mm PRE-FINISHED ALUMINUM PLATE PANEL (0.3 mm STEEL) c/w CONCEALED FASTENERS
 38 x 89mm HORIZONTAL WOOD STRAPPING AT 610 mm c/c
 SHEET AIR BARRIER
 38 X 140mm WOOD STUDS SPF No.1/2 SPACED AT 406mm c/c
 RSI: 3.87 MINERAL WOOL BATT INSULATION
 0.1524 mm POLY VAPOUR BARRIER
 16mm OSB SHEATHING (FOR MOUNTING EQUIPMENT)
 13mm PVC PANEL (VERTICAL)



EXTERIOR GABLE END WALLS w/ INTERIOR PVC FINISH
 25mm PRE-FINISHED ALUMINUM PLATE PANEL (0.3 mm STEEL) c/w CONCEALED FASTENERS
 38 x 89mm HORIZONTAL WOOD STRAPPING AT 610 mm c/c
 SHEET AIR BARRIER
 38 X 184mm WOOD STUDS SPF No.1/2 SPACED AT 406 mm c/c
 RSI: 4.93 MINERAL WOOL BATT INSULATION
 0.1524 mm POLY VAPOUR BARRIER
 19 X 89mm HORIZONTAL WOOD STRAPPING AT 406 mm c/c
 13mm PVC PANEL

CSC-COW BARN & MANURE TANK (DOCUMENT SET 2) PUBLIC SERVICES AND PROCUREMENT CANADA NEW WALL TYPES FOR ALUMINUM CLADDING (AT MILKING PARLOUR ENTRY)		PROJ. #: THA:1945 R.100644.001	ADDENDUM 10 SK-04
TAYLOR HAZELL ARCHITECTS LTD. 2928 DUNDAS ST. W, TORONTO, ONT. M6P 1Y8	PHONE: (416) 862-2694	DATE: 2022-02-11	SCALE: VARIES